



ANNUAL REPORT..... 2024

2024 Annual Report

Table of Contents

5	Annual Report on Form 10-K for the period ended September 30, 2024
97	Stock Performance Graph
99	Corporate Information

(This page has been left blank intentionally.)

**UNITED STATES
SECURITIES AND EXCHANGE COMMISSION
Washington, D.C. 20549**

FORM 10-K

☒ **ANNUAL REPORT PURSUANT TO SECTIONS 13 OR 15(d) OF THE SECURITIES EXCHANGE ACT OF 1934**

For the Fiscal Year Ended: September 30, 2024

OR

☐ **TRANSITION REPORT PURSUANT TO SECTION 13 OR 15(d) OF THE SECURITIES EXCHANGE ACT OF 1934**

For the transition period from _ to _

Commission File Number: 0-18059

PTC Inc.

(Exact name of registrant as specified in its charter)

Massachusetts
(State or other jurisdiction of
incorporation or organization)

04-2866152
(I.R.S. Employer
Identification Number)

121 Seaport Boulevard, Boston, MA 02210
(Address of principal executive offices, including zip code)
(781) 370-5000

(Registrant's telephone number, including area code)

Securities registered pursuant to Section 12(b) of the Act:

Title of each class	Trading Symbol	Name of each exchange on which registered
Common Stock, \$.01 par value per share	PTC	NASDAQ Global Select Market

**Securities registered pursuant
to Section 12(g) of the Act: None**

Indicate by check mark whether the registrant is a well-known seasoned issuer, as defined in Rule 405 of the Securities Act. Yes ☒ No ☐

Indicate by check mark whether the registrant is not required to file reports pursuant to Section 13 or 15(d) of the Act. Yes ☐ No ☒

Indicate by check mark whether the registrant: (1) has filed all reports required to be filed by Section 13 or 15(d) of the Securities Exchange Act of 1934 during the preceding 12 months (or for such shorter period that the registrant was required to file such reports) and (2) has been subject to such filing requirements for the past 90 days. Yes ☒ No ☐

Indicate by check mark whether the registrant has submitted electronically every Interactive Data File required to be submitted pursuant to Rule 405 of Regulation S-T during the preceding 12 months (or for such shorter period that the registrant was required to submit such files). Yes ☒ No ☐

Indicate by check mark whether the registrant is a large accelerated filer, an accelerated filer, a non-accelerated filer or a smaller reporting company. See the definitions of "large accelerated filer," "accelerated filer" and "smaller reporting company" in Rule 12b-2 of the Exchange Act.

Large Accelerated Filer	<input checked="" type="checkbox"/> Accelerated Filer	<input type="checkbox"/> Non-accelerated Filer	<input type="checkbox"/> Smaller Reporting Company	<input type="checkbox"/>
			Emerging growth company	<input type="checkbox"/>

If an emerging growth company, indicate by check mark if the registrant has elected not to use the extended transition period for complying with any new or revised financial accounting standards provided pursuant to Section 13(a) of the Exchange Act. ☐

Indicate by check mark whether the registrant has filed a report on and attestation to its management's assessment of the effectiveness of its internal control over financial reporting under Section 404(b) of the Sarbanes-Oxley Act (15 U.S.C. 7262(b)) by the registered public accounting firm that prepared or issued its audit report. ☒

If securities are registered pursuant to Section 12(b) of the Act, indicate by check mark whether the financial statements of the registrant included in the filing reflect the correction of an error to previously issued financial statements. ☐

Indicate by check mark whether any of those error corrections are restatements that required a recovery analysis of incentive-based compensation received by any of the registrant's executive officers during the relevant recovery period pursuant to §240.10D-1(b). ☐

Indicate by check mark whether the registrant is a shell company (as defined in Rule 12b-2 of the Act). Yes ☐ No ☒

The aggregate market value of our voting stock held by non-affiliates was approximately \$22,558,974,797 on March 28, 2024 based on the last reported sale price of our common stock on the Nasdaq Global Select Market on that date. There were 119,716,947 shares of our common stock outstanding on that day and 120,129,080 shares of our common stock outstanding on November 12, 2024.

DOCUMENTS INCORPORATED BY REFERENCE

Portions of the definitive Proxy Statement in connection with the 2025 Annual Meeting of Shareholders (2025 Proxy Statement) are incorporated by reference into Part III.

PTC Inc.
ANNUAL REPORT ON FORM 10-K FOR FISCAL YEAR 2024
Table of Contents

	<u>Page</u>
<u>PART I.</u>	
Item 1. Business	1
Item 1A. Risk Factors	8
Item 1B. Unresolved Staff Comments	18
Item 1C. Cybersecurity	18
Item 2. Properties	20
Item 3. Legal Proceedings	20
Item 4. Mine Safety Disclosures	20
<u>PART II.</u>	
Item 5. Market for Registrant's Common Equity, Related Stockholder Matters and Issuer Purchases of Equity Securities	20
Item 6. Reserved	20
Item 7. Management's Discussion and Analysis of Financial Condition and Results of Operations	21
Item 7A. Quantitative and Qualitative Disclosures about Market Risk	37
Item 8. Financial Statements and Supplementary Data	39
Item 9. Changes in and Disagreements with Accountants on Accounting and Financial Disclosure	39
Item 9A. Controls and Procedures	39
Item 9B. Other Information	40
Item 9C. Disclosure Regarding Foreign Jurisdictions that Prevent Inspection	41
<u>PART III.</u>	
Item 10. Directors, Executive Officers and Corporate Governance	42
Item 11. Executive Compensation	42
Item 12. Security Ownership of Certain Beneficial Owners and Management and Related Stockholder Matters	43
Item 13. Certain Relationships and Related Transactions, and Director Independence	43
Item 14. Principal Accounting Fees and Services	43
<u>PART IV.</u>	
Item 15. Exhibits and Financial Statement Schedules	44
Item 16. Form 10-K Summary	44
<u>Exhibit Index</u>	45
<u>Signatures</u>	47
<u>APPENDIX A</u>	
Report of Independent Registered Public Accounting Firm (PricewaterhouseCoopers LLP, Boston, MA, PCAOB ID: 238)	F-1
Consolidated Financial Statements	F-4
Notes to Consolidated Financial Statements	F-9

Cautionary Note About Forward-Looking Statements

This Annual Report contains forward-looking statements within the meaning of Section 27A of the Securities Act of 1933, as amended, and Section 21E of the Securities Exchange Act of 1934, as amended. We intend such forward-looking statements to be covered by the safe harbor provisions for forward-looking statements contained in the Private Securities Litigation Reform Act of 1995. In particular, statements that are not historical facts, including but not limited to, statements about our anticipated financial results, capital development and growth, stock repurchases, our environmental sustainability initiatives, and the development of our products, markets and workforce, are forward-looking statements. These forward-looking statements are generally identifiable by use of the words “believe,” “expect,” “intend,” “anticipate,” “estimate,” “project” or similar expressions, whether in the negative or affirmative. Forward-looking statements are based on our current plans, expectations and assumptions and are not guarantees of future performance. Factors that may cause our actual results to differ materially from these statements include, but are not limited to, the risks and uncertainties discussed in Item 1A. “Risk Factors” and elsewhere throughout this Annual Report. Such factors, among others, could have a material adverse effect upon our business, results of operations and financial condition. We caution readers not to place undue reliance on any forward-looking statements, which only speak as of the date made. We undertake no obligation to update any forward-looking statement to reflect events or circumstances after the date on which such statement is made.

Unless otherwise indicated, all references to a year reflect our fiscal year that ends on September 30.

Website References

References to our PTC.com website in this Annual Report and to our 2024 Impact Report, to be published in early 2025, are provided for convenience. The content on PTC.com and in our 2024 Impact Report is not incorporated by reference into this Annual Report unless expressly stated.

PART I

ITEM 1. Business

Our Business

PTC is a global software company that enables manufacturers and product companies to digitally transform how they design, manufacture, and service the physical products that the world relies on. Headquartered in Boston, Massachusetts, PTC employs over 7,000 people and supports more than 30,000 customers globally.

We primarily serve customers in the following industry verticals:

- Industrials
- Federal, Aerospace and Defense
- Electronics and High Tech
- Automotive
- Medical Technology and Life Sciences

Our customers are focused on improving their competitiveness in the face of global competition and increasing product complexity, and our suite of software offerings is a strategic enabler of this and their digital transformation initiatives. We enable our customers to establish a strong product data foundation and leverage that foundation to drive cross-functional collaboration, accelerate new product introduction timelines and deliver higher product quality.

Our offerings include CAD (Computer Aided Design) solutions for product data authoring and PLM (Product Lifecycle Management) solutions for product data management and process orchestration.

Within the overall PLM category, our offerings also include ALM (Application Lifecycle Management) and SLM (Service Lifecycle Management).

Given the breadth and openness of our portfolio, we can enable end-to-end digital thread initiatives, which leverage a connected flow of product data across design, manufacturing, service, and, ultimately, reuse. A digital thread enables product companies to break down silos, streamline workflows, and achieve interoperability across departments, functions and systems with a single version of truth. It also secures the quality, consistency and traceability of product-related data, ensuring that the data is up-to-date, accessible, reliable and actionable. With a digital thread, the right data is delivered to the right people at the right time and in the right context across the value chain.

Our business is based on a subscription model, with 93% of our 2024 revenue being recurring in nature. Compared to a perpetual license model, our subscription model naturally drives higher customer engagement and retention and provides better business predictability. This, in turn, enables us to make steady and sustained investments to pursue mid-to-long-term growth opportunities.

Our Principal Products and Services

PLM software products for product data management and process orchestration

Our **Windchill®** PLM application suite manages all aspects of the product development lifecycle—from concept through service and end-of-life. Windchill provides real-time information sharing, dynamic data visualization, and the ability to collaborate across geographically distributed teams, enabling manufacturers to elevate their product development, manufacturing, field service, and end-of-life processes.

Our **Codebeamer®** and **pure::variants™** application lifecycle management (ALM) solutions enable companies to accelerate the development of products that contain software, including software-defined products which require multiple software variants to be created and updated over the life of the product.

Our **ServiceMax®** service lifecycle management (SLM) solution enables companies to improve asset uptime with optimized in-person and remote service, boost technician productivity with the latest mobile tools, and deliver metrics for confident decision making.

Our **Servigistics®** service parts management solution enables companies to effectively manage their service parts inventory, enabling them to optimize equipment availability and uptime, and increase customer satisfaction.

Our **Arena®** Software as a Service (SaaS) PLM solution enables product teams to collaborate virtually anytime and anywhere, making it easier to share the latest product and quality information with internal teams and supply chain partners and deliver innovative products to customers faster. Our Arena quality management system software connects quality and product designs into a single system to simplify regulatory compliance.

CAD software products for product data authoring

Our **Creo®** 3D CAD technology enables the digital design, testing, and modification of product models. With its design simulation, additive manufacturing, and generative design innovations, we enable our customers to be first to market with differentiated products. From initial concept to design, simulation, and analysis, Creo provides designers with innovative tools to efficiently create better products, faster.

Our **Onshape**® SaaS product development platform unites computer-aided design with data management, collaboration tools, and real-time analytics. A cloud-native multi-tenant solution that can be instantly deployed on virtually any computer or mobile device, Onshape enables teams to work together from just about anywhere. Real-time design reviews, commenting, and simultaneous editing enable a collaborative workflow where multiple design iterations can be completed in parallel and merged into the final design.

Enabling technologies

Our principal products and services are enhanced by a collection of enabling technologies, including SaaS versions of our **Creo**® CAD and **Windchill**® PLM software, artificial intelligence software, our **ThingWorx**® Internet of Things software, and our **Vuforia**® augmented reality software. The primary focus of these technologies is to deliver value-added capabilities to our principal products and services, such as the improved security and collaboration environment of a SaaS platform; unlocking productivity with artificial intelligence; moving product data more quickly across engineering, manufacturing, and service using IoT; or automatically analyzing the quality of a manufactured product with augmented reality.

Our Markets and How We Address Them

Our strategy aims to create value for our customers, increase our Annual Run Rate (ARR) and cash flow, and deliver long-term value for shareholders. We focus our resources on the following five solutions, where we believe we can create the greatest customer value:

- PLM
- ALM
- SLM
- CAD
- SaaS or Software as a Service

Our growth is primarily driven by existing customers that continue to expand their PTC footprint, largely relating to their focus on improving their competitiveness through digital transformation. To a lesser extent, our growth is also supported by new customers and price increases.

We derive approximately 75% of our sales from products and services sold directly by our sales force to end-user customers. The rest of our sales of products and services are through third-party resellers. Our sales force focuses on large accounts, while our reseller channel provides a cost-effective means of covering the small- and medium-size business markets. Our strategic reseller and software partners enable us to increase our market reach, offer broader solutions, and add compelling technology to our offerings. Our strategic services partners provide service offerings to help customers implement our product offerings and transition to SaaS.

Additional financial information about our international and domestic operations may be found in *Note 3. Revenue from Contracts with Customers* of Notes to Consolidated Financial Statements in this Annual Report, which information is incorporated herein by reference.

Competition

We compete with a number of companies whose offerings address one or more specific functional areas covered by our solutions. For enterprise CAD and PLM solutions, we compete with large established companies including Autodesk, Dassault Systèmes SA, and Siemens AG. For our ALM products, we compete with IBM, Jama Software, Inc. and Siemens AG. For our SLM products, we compete with enterprise software companies such as Oracle, SAP and IFS AB, and with companies that offer point solutions.

Proprietary Rights

Our software products and related technical know-how, along with our trademarks, including our company names, product names and logos, are proprietary. We protect our intellectual property rights in these items by relying on copyrights, trademarks, patents and common law safeguards, including trade secret protection. The nature and extent of such legal protection depends in part on the type of intellectual property right and the relevant jurisdiction. In the U.S., we are generally able to maintain our trademark registrations for as long as the trademarks are in use and to maintain our patents for up to 20 years from the earliest effective filing date. We also use license management and other anti-piracy technology measures, as well as contractual restrictions, to curtail the unauthorized use and distribution of our products.

Our proprietary rights are subject to the risks and uncertainties described under Item 1A. *Risk Factors* below, which is incorporated into this section by reference.

Environmental Sustainability

At PTC, we're working to contribute to the decarbonization and circularity of global manufacturing. While we have a climate action plan committed to reducing our company's "footprint," we believe far larger benefits will flow from our "handprint" stemming from our software offerings. Our software solutions enable manufacturers to design, build, and service their products more sustainably.

Footprint

Our emission reduction plan was validated by the Science Based Targets initiative (SBTi) in September 2024. Our near-term commitment is to reduce by 2030 combined Scope 1 (direct emissions from owned/controlled operations) and Scope 2 (indirect energy use) emissions by 50% and reduce Scope 3 - Category 1 (Purchased Goods and Services) by 25% compared to our 2022 baseline. Our long-term net-zero commitment is to reach net-zero across all scope emissions by 2050, with absolute reductions of over 90% across Scopes 1-3, with accredited carbon removal offsets for the remaining 10% (or less) as needed.

We have already begun to implement programs and pursue initiatives to reduce our emissions and carbon footprint, including:

- entering into a Virtual Power Purchase Agreement (VPPA) to reduce our future carbon footprint;
- prioritizing energy efficiency and accessibility to public transportation when selecting office space;
- providing a subsidy for employee's public transportation commute costs; and
- selecting suppliers with decarbonization targets.

Handprint

Environmental sustainability is integral to our product offerings. With our software, manufacturers can support their sustainability and compliance initiatives, including by designing with less material, enhancing product repairability and circularity, improving factory efficiency, and enabling remote service.

People and Culture

Within our work environment we seek to create an equitable and inclusive culture in which all employees can thrive. This is a key aspect of our talent strategy. Our approach is focused on promoting an agile culture, an increased sense of belonging, engaged work environments, and high-performing teams.



Really matter. We listen, work to understand their unique challenges, and strive to create excellent experiences, products, and partnerships that deliver meaningful impact.



We win and lose together. We break down silos for our collective success. We see the bigger picture and build trust with each other by delivering on our promises, meeting deadlines, and sharing knowledge.



Speak up and be accountable. It's okay to disagree, raise concerns, and take calculated risks. If something isn't working, we're empowered to address it early, learn from our failures, and pivot quickly for better outcomes.



We choose to be our best, authentic selves and welcome all to do the same. We always act with integrity and care about each other and the world around us.

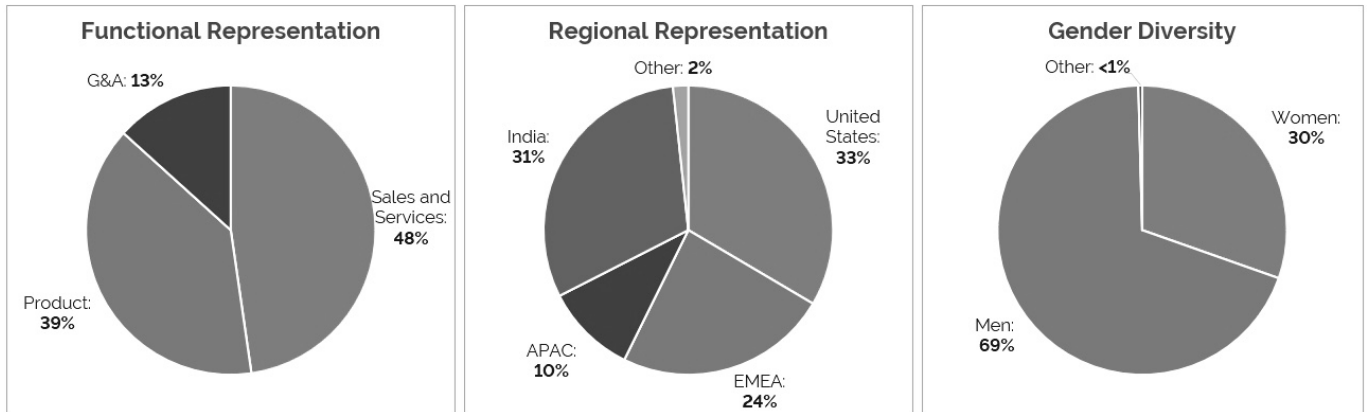


We are driven to innovate across every team. We celebrate both big ideas and small continuous improvements. We stay curious and focus on delivering real customer value every day.

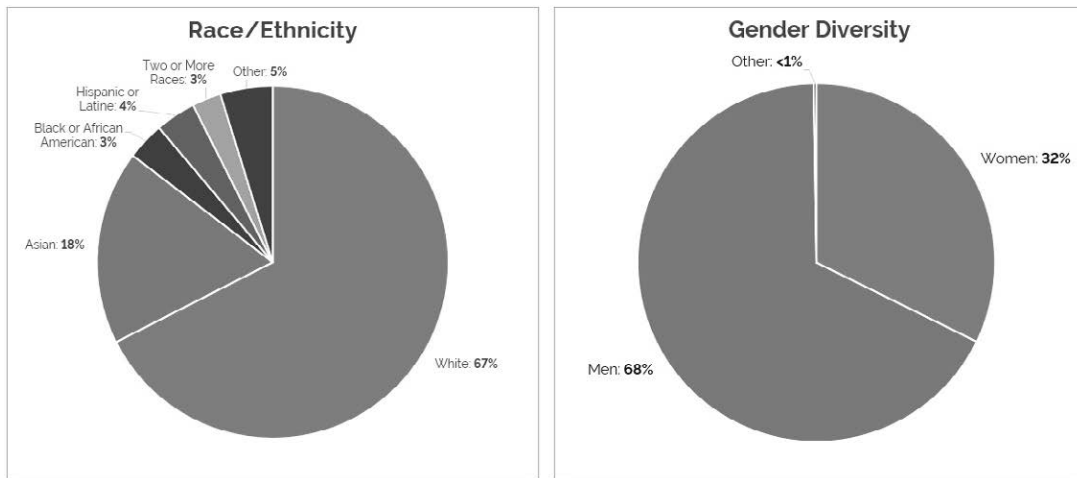
PTC at-a-Glance

As of September 30, 2024, PTC had 7,501 full-time employees. Our employee population is geographically diverse and serves a geographically diverse customer and partner network.

Worldwide Employee Representation



United States Employee Representation



Compensation and Benefits

PTC provides a comprehensive and competitive compensation and benefits package designed to attract, retain, motivate, and engage talent around the world, including base salaries, and, for eligible roles, incentive and equity compensation. Employees also have the opportunity to purchase PTC stock at a discount through our Employee Stock Purchase Plan.

Our benefit offerings are designed to meet the needs of our employees and their families around the world. Specific offerings differ country by country due to cultural norms, market dynamics, and legal requirements, but we provide a wide variety of core health and financial programs such as healthcare, life and disability insurance, employee assistance plans, retirement savings and pension benefit plans, and generous paid family leave and vacation time.

Talent Development & Employee Engagement

As we focus on enhancing the employee experience, we are increasing our efforts to invest in our people and create meaningful opportunities to learn, grow, develop, and advance their careers. We have specific development programs and coaching programs, as well as numerous other self-led learning paths. The variety of options means that employees have the ability to focus on the development path most meaningful to them.

Diversity, Equity, and Inclusion (DEI)

Commitment to our values and diversity in our workforce is supported by various ongoing efforts. We mitigate bias by coaching managers and leaders in fostering psychologically safe environments. We also review and revise our processes based on feedback and engagement scores from employee pulse surveys. We embed equitable practices into the planning and execution of how we attract, select, develop, and retain talent. Meanwhile, our DEI ambassadors are aligned with business functions to amplify and enhance our efforts in these areas. Finally, to cultivate a community of belonging, our 11 Employee Resource Groups foster an inclusive culture and facilitate safe spaces for employees to navigate social issues and challenges.

Additional Information About Our Employee Initiatives

You can find more information about our employee initiatives in our 2024 Impact Report, which we expect to release in early 2025.

Available Information

We make available free of charge on our website at www.ptc.com the following reports as soon as reasonably practicable after electronically filing them with, or furnishing them to, the SEC: our Annual Reports on Form 10-K; our Quarterly Reports on Form 10-Q; our Current Reports on Form 8-K; and amendments to those reports filed or furnished pursuant to Sections 13(a) or 15(d) of the Securities Exchange Act of 1934. Our Proxy Statements for our Annual Meetings and Section 16 trading reports on SEC Forms 3, 4 and 5 also are available on our website.

Corporate Information

PTC was incorporated in Massachusetts in 1985 and is headquartered in Boston, Massachusetts.

ITEM 1A. Risk Factors

The following are important factors we have identified that could affect an investment in our securities. You should consider them carefully when evaluating an investment in PTC securities, because these factors could cause actual results to differ materially from historical results or any forward-looking statements. The risks described below are not the only risks we face. Additional risks and uncertainties not currently known to us or that we currently deem to be immaterial may also materially adversely affect our business, financial condition, operating results, and prospects.

I. Risks Related to Our Business Operations and Industry

We face significant competition, which could adversely affect our business, financial condition, operating results, and prospects if we are unable to successfully compete.

The markets for our products and solutions are rapidly changing and characterized by intense competition, disruptive technology developments, evolving distribution models and increasingly lower barriers to entry. If we are unable to provide products and solutions that address customers' needs as well as our competitors' products and solutions do, or to align our pricing, licensing and delivery models with customer preferences, we could lose customers and/or fail to attract new customers, which could adversely affect our business, financial condition, operating results, and prospects.

For example, customer demand for SaaS solutions is increasing. While our Arena, ServiceMax, and Onshape solutions are cloud-native SaaS solutions, and we have introduced our Windchill+, Creo+, and Kepware+ SaaS solutions, customers may not adopt them as we expect. If we are unable to compete successfully with competitors offering SaaS solutions, we could lose customers and/or fail to attract new customers, which could adversely affect our business, financial condition, operating results, and prospects.

Our current and potential competitors range from large and well-established companies to emerging start-ups. Some of our competitors and potential competitors have greater name recognition in the markets we serve and greater financial, technical, sales and marketing, and other resources, which could limit our ability to gain customer recognition and confidence in our products and solutions and successfully sell our products and solutions, which could adversely affect our ability to grow our business.

A breach of security in our products or computer systems, or those of our third-party service providers, could compromise the integrity of our products, cause loss of data, harm our reputation, create additional liability and adversely affect our business, financial condition, operating results, and prospects.

We have implemented and continue to implement measures intended to maintain the security and integrity of our products, source code and IT systems. The potential for a security breach or system disruption has significantly increased over time as the scope, number, intensity and sophistication of attempted cyberattacks and cyber intrusions have increased – particularly cyberattacks and intrusions designed to access and exfiltrate information and to disrupt and lock up access to systems for the purpose of demanding a ransom payment. It is impossible for us to eliminate the risk of a successful cyberattack or intrusion, and, in fact, we regularly deal with security issues and have experienced security incidents from time to time. Accordingly, there is a risk that a cyberattack or intrusion will be successful and that such event will be material.

In addition, we offer cloud services to our customers and some of our products, including our SaaS products, are hosted by third-party service providers, which expose us to additional risks as those repositories of our customers' proprietary data may be targeted and a cyberattack or intrusion may be successful and material. Interception of data transmission, misappropriation or modification of data, corruption of data and attacks against our service providers may adversely affect our products or product and service delivery. Malicious code, viruses or vulnerabilities that are undetected by us or our service providers may disrupt our business operations generally and may have a disproportionate effect on those of our products that are developed and delivered in the cloud environment.

While we devote resources to maintaining the security and integrity of our products and systems, as well as performing due diligence of our third-party service providers, security breaches that have not had a material effect on our business or that of our customers have occurred, and we will continue to face cybersecurity threats and exposure. A significant breach of the security and/or integrity of our products or systems, or those of our third-party service providers, whether intentional or by human error by our employees or others, could disrupt our business operations or those of our customers, could prevent our products from functioning properly, could enable access to sensitive, proprietary or confidential information of our customers, or could enable access to our sensitive, proprietary or confidential information. This could require us to incur significant costs of investigation, remediation and/or payment of a ransom; harm our reputation; cause customers to stop buying our products; and cause us to face lawsuits and potential liability, any of which could have a material adverse effect on our business, financial condition, operating results, and prospects.

We have a large ecosystem of strategic, technology, and software partners and system integrators that enable us to enhance our products and offerings, expand our market reach, and accelerate our customers' digital transformation journeys. Failures by those partners or termination of those relationships could adversely affect our business, financial condition, operating results, and prospects.

We have many strategic, technology, and software partner and system integrator relationships with other companies that provide technologies and software that we embed in our solutions, that provide implementation services to our customers, that we work with to offer complementary solutions and services, and that market and sell our solutions. If these companies fail to perform as we expect, or if a company terminates or substantially alters the terms of the relationship, we could experience delays in product development, reduced or delayed sales, customer dissatisfaction, and additional expenses, and our business, financial condition, results of operations, and prospects could be materially adversely affected.

We increasingly rely on third-party providers of cloud infrastructure services to deliver our offerings to users on our platform, and any disruption of or interference with our use of these services could adversely affect our business, financial condition, operating results, and prospects.

Our continued growth depends in part on the ability of our existing and potential customers to use and access our cloud services or our website in order to download our software or encrypted access keys for our software within an acceptable amount of time. We use a number of third-party service providers that we do not control for key components of our infrastructure, particularly with respect to development and delivery of our cloud-based products. The use of these service providers gives us greater flexibility in efficiently delivering a more tailored, scalable customer experience, but also exposes us to additional risks and vulnerabilities. Third-party service providers operate their own platforms that we access, and we are, therefore, vulnerable to their service interruptions. We may experience interruptions, delays and outages in service and availability from time to time as a result of problems with our third-party service providers' infrastructure. Lack of availability of this infrastructure could be due to a number of potential causes including technical failures, natural disasters, fraud or security attacks that we cannot predict or prevent. Such outages could adversely impact our business, financial condition, results of operations, and prospects.

If we are unable to renew our agreements with our cloud service providers on commercially reasonable terms, or any of our agreements are prematurely terminated, or we need to add new cloud services providers to increase capacity and uptime, we could experience interruptions, downtime, delays, and additional expenses related to transferring to and providing support for these new platforms. Any of the above circumstances or events may harm our reputation and brand, reduce the availability or usage of our platforms and impair our ability to attract new users, any of which could adversely affect our business, financial condition, results of operations, and prospects.

We may be unable to hire or retain employees with the necessary skills to operate and grow our business, which could adversely affect our ability to compete and adversely affect our business, financial condition, results of operations, and prospects.

Our success depends upon our ability to attract and retain highly skilled employees to develop and sell our products and solutions and to operate and grow our business. Competition for such employees in our industry is intense worldwide.

If we are unable to attract and retain employees with the requisite skills to develop and sell our products and solutions, or to guide, operate and support our business, we may be unable to compete successfully, which would adversely affect our business, financial condition, results of operations, and prospects.

We depend on sales within the discrete manufacturing sector and our business could be adversely affected if manufacturing activity does not grow or if it contracts, or if manufacturers are adversely affected by other macroeconomic factors.

A large amount of our sales are to customers in the discrete manufacturing sector. Manufacturers worldwide continue to face uncertainty about the global macroeconomic environment due to, among other factors, the effects of earlier and ongoing supply chain disruptions, high interest rates and inflation, volatile foreign exchange rates and the current relative strength of the U.S. Dollar, and the U.S. government's focus on technology transactions with non-U.S. entities. Customers may delay, reduce, or forego purchases of our solutions due to these challenges and concerns, which could adversely affect our business, financial condition, results of operations, and prospects.

If we fail to successfully transform our operations to support the sale of SaaS solutions and to develop competitive SaaS solutions, our business and prospects could be adversely affected.

Transforming our business to offer and support SaaS solutions requires considerable additional investment in our organization. Whether we will be successful and will accomplish our business and financial objectives is subject to risks and uncertainties, including but not limited to: our ability to further develop and scale infrastructure, our ability to include functionality and usability in such offerings that address customer requirements, our ability and the ability of our partners to transition existing customer implementations to SaaS, customer demand, attach and renewal rates, channel adoption, and our costs. If we are unable to successfully establish these new offerings and navigate our business transition, our business, financial condition, results of operations, and prospects could be adversely affected.

Because our sales and operations are globally dispersed, we face additional compliance risks, and any compliance failure could adversely affect our business and prospects.

We sell and deliver software and services, and maintain support operations, in many countries whose laws and practices differ from one another and are subject to unexpected changes. Managing these geographically dispersed operations requires significant attention and resources to ensure compliance with laws of those countries and those of the U.S. governing our activities in non-U.S. countries.

Those laws include, but are not limited to, anti-corruption laws and regulations (including the U.S. Foreign Corrupt Practices Act (FCPA) and the U.K. Bribery Act 2010), data privacy laws and regulations (including the European Union's General Data Privacy Regulation), and trade and economic sanctions laws and regulations (including laws administered by the U.S. Department of the Treasury's Office of Foreign Assets Control, the U.S. State Department, the U.S. Department of Commerce, the United Nations Security Council and other sanctions authorities). Our compliance risks are heightened due to the go-to-market approach for our business that relies heavily on a partner ecosystem, the fact that some of the countries we operate in have a higher incidence of corruption and fraudulent business practices, the fact that we sell to governments and state-owned business enterprises, and the fact that global enforcement of laws has significantly increased.

Accordingly, while we strive to maintain a comprehensive compliance program, an employee, agent or business partner may violate our policies or U.S. or other applicable laws, as has occurred in the past, or we may inadvertently violate such laws. Investigations of alleged violations of those laws can be expensive and disruptive. Violations of such laws can lead to civil and/or criminal prosecutions, substantial fines and other sanctions, including the revocation of our rights to continue certain operations, and also cause business loss and reputational harm, which could adversely affect our business, financial condition, results of operations, and prospects.

We and our customers are subject to an increasing number of laws and regulations related to sustainability matters, compliance with which could adversely affect our business, financial condition, results of operations, and prospects.

We are subject to an increasing number of laws and regulations promulgated by multiple countries and jurisdictions that require new and expansive disclosure on sustainability topics and, in some cases, remediation of adverse effects, that will increase our compliance costs and expose us to risks associated with regulatory compliance.

These laws and regulations include those promulgated pursuant to the European Union's Corporate Sustainability Reporting Directive ("CSRD") and its Corporate Sustainability Due Diligence Directive ("CSDDD"). CSRD requires new and expansive disclosures related to sustainability risks and opportunities. CSDDD will require us to conduct due diligence to identify, prevent, mitigate, and account for actual and potential adverse impacts on human rights and the environment arising from our own operations and our value chains and to remediate any such adverse impacts. Compliance with these directives requires significant investment in resources, including the implementation of new reporting systems, data collection processes, and due diligence procedures.

As many of our customers and potential customers, particularly those in Germany and elsewhere in the European Union, are also subject to such laws and directives, those companies will increasingly be required to assess our sustainability efforts and impacts; if we are unable to satisfactorily address their requests for information or other sustainability related requests, contracting periods with those companies may be extended or those companies may elect to use other suppliers or switch suppliers, which could adversely affect our business, financial condition, results of operations, and prospects.

The regulatory landscape for sustainability continues to evolve and expand and the introduction of additional laws or regulatory requirements may impose further compliance burdens and further increase our compliance costs. We are committed to meeting existing and future regulatory requirements; however, the financial and operational impact of current and future laws and regulations remains uncertain and could materially adversely affect our business, financial condition, results of operations and prospects.

Increased scrutiny and expectations around environmental, social, and governance ("ESG") matters may require us to incur additional costs or otherwise adversely impact our reputation, business, and prospects.

Our stakeholders, including investors, customers, suppliers, and employees, are placing greater emphasis on our ESG performance and transparency. This increasing stakeholder attention to and expectations around ESG matters, particularly sustainability matters, and our response to the same, may result in higher costs (including higher costs related to compliance, stakeholder engagement, and contracting), adversely impact our reputation, or otherwise negatively affect our business performance and prospects.

Our statements about our sustainability, environmental and human capital initiatives and goals, and progress against those goals, may be based on standards for measuring progress that are still developing, internal controls and processes that continue to evolve, and assumptions that are subject to change. If our related data, processing and reporting are incomplete or otherwise inaccurate, or if we fail to achieve progress on our stated targets or initiatives when or as expected, our business, financial condition, operating results, and prospects could be adversely affected.

II. Risks Related to Our Intellectual Property

We may be unable to adequately protect our proprietary rights, which could adversely affect our business and our prospects.

Our software products are proprietary. We protect our intellectual property rights in these items by relying on copyrights, trademarks, patents and common law safeguards, including trade secret protection, as well as restrictions on disclosures and transferability contained in our agreements with other parties. Despite these measures, the laws of all relevant jurisdictions may not afford adequate protection to our products and other intellectual property. In addition, we frequently encounter attempts by individuals and companies to pirate our software. If our measures to protect our intellectual property rights fail, others may be able to use those rights, which could reduce our competitiveness and adversely affect our business, financial condition, operating results, and prospects.

In addition, any legal action to protect our intellectual property rights that we may bring or be engaged in could be costly, may distract management from day-to-day operations and may lead to additional claims against us, and we may not succeed, all of which could adversely affect our business, financial condition, operating results, and prospects.

Intellectual property infringement claims could be asserted against us, which could be expensive to defend, could result in limitations on our use of the claimed intellectual property, and could adversely affect our business and prospects.

The software industry is characterized by frequent litigation regarding copyright, patent and other intellectual property rights. We have faced such lawsuits from time to time. Any such claim could result in significant expense to us and divert the efforts of our technical and management personnel. We cannot be sure that we would prevail against any such asserted claims. If we did not prevail, we could be prevented from using the claimed intellectual property or be required to enter into royalty or licensing agreements, which might not be available on terms acceptable to us. In addition to possible claims with respect to our proprietary products, some of our products contain technology developed by and licensed from third parties and we may likewise be susceptible to infringement claims with respect to these third-party technologies.

III. Risks Related to Acquisitions

Businesses we acquire may not generate the sales and earnings we anticipate and may otherwise adversely affect our business and prospects.

We have acquired, and intend to continue to acquire, new businesses and technologies. If we fail to successfully integrate and manage the businesses and technologies we acquire, if an acquisition does not further our business strategy or return a level of sales as we expect, or if a business we acquire has unexpected legal or financial liabilities, our business, financial condition, results of operations, and prospects could be adversely affected.

The types of issues that we may face in integrating and operating the acquired business include:

- difficulties managing an acquired company's technologies or lines of business or entering new markets where we have limited or no prior experience or where competitors may have stronger market positions;
- unanticipated operating difficulties in connection with the acquired entities, including potential declines in sales of the acquired entity;
- complications relating to the assumption of pre-existing contractual relationships of an acquired company that we would not have otherwise entered into, the termination or modification of which may be costly or disruptive to our business;
- litigation arising from the transaction, including potential intellectual property claims or disputes following an acquisition;
- diversion of management and employee attention;
- challenges with implementing adequate and appropriate controls, procedures and policies in an acquired business;
- potential loss of key personnel in connection with an acquisition; and
- potential incompatibility of business cultures.

Further, if we do not achieve the expected return on our investments, it could impair the intangible assets and goodwill that we recorded as part of an acquisition, which could require us to record a reduction to the value of those assets.

We may incur significant debt or issue a material amount of debt or equity securities to finance an acquisition, which could adversely affect our operating flexibility, business and prospects.

If we were to incur a significant amount of debt—whether by borrowing funds under our credit facility or otherwise or issuing new debt securities—to finance an acquisition, our interest expense, debt service requirements and leverage would increase significantly. The increases in these expenses and in our leverage could constrain our ability to operate as we might otherwise or to borrow additional amounts and could adversely affect our business, financial condition, results of operations, and prospects.

If we were to issue a significant amount of equity securities in connection with an acquisition, existing stockholders would be diluted and our stock price could decline.

IV. Risks Related to Our Indebtedness

Our substantial indebtedness could adversely affect our business, financial condition, results of operations, and prospects, as well as our ability to meet our payment obligations under our debt.

We have a substantial amount of indebtedness. As of November 14, 2024, our total debt outstanding was approximately \$1,668 million, \$1 billion of which was associated with the 3.625% Senior Notes and 4.000% Senior Notes (together, "Senior Notes") issued in February 2020, which mature in February 2025 and 2028, respectively, and are unsecured; \$177 million of which was borrowed under our credit facility revolving line, which matures in January 2028; and \$491 million of which was borrowed under our credit facility term loan [which began amortizing in March 2024]. All amounts outstanding under the credit facility and the Senior Notes will be due and payable in full on their respective maturity dates. As of November 14, 2024, we had unused commitments under our credit facility of approximately \$1,073 million. PTC Inc. and one of our foreign subsidiaries are eligible borrowers under the credit facility and certain other foreign subsidiaries may become borrowers under our credit facility in the future, subject to certain conditions.

Specifically, our level of debt could:

- make it more difficult for us to satisfy our debt obligations and other ongoing business obligations, which may result in defaults;
- result in an event of default if we fail to comply with the financial and other covenants contained in the agreements governing our debt instruments, which could result in all of our debt becoming immediately due and payable or require us to negotiate an amendment to financial or other covenants that could cause us to incur additional fees and expenses;
- limit our ability to obtain additional financing to fund future working capital, capital expenditures, acquisitions or other general corporate requirements;
- reduce the availability of our cash to fund working capital, capital expenditures, acquisitions and other general corporate purposes and limit our ability to obtain additional financing for these purposes;
- increase our vulnerability to adverse economic and industry conditions;
- amplify the risk of increased interest rates as certain of our borrowings, including borrowings under our credit facility, are at variable rates of interest;
- limit our flexibility in planning for, or reacting to, and increasing our vulnerability to, changes in our business, the industries in which we operate, and the overall economy; and
- place us at a competitive disadvantage compared to other, less leveraged competitors.

Any of the above-listed factors could have an adverse effect on our business, financial condition, results of operations, and prospects, and our ability to meet our payment obligations under our debt agreements.

Despite our current level of indebtedness, we and our subsidiaries might incur substantially more debt and other obligations. This could further exacerbate the risks to our business, financial condition, and prospects described above.

We and our subsidiaries might incur significant additional indebtedness and other obligations in the future, including secured debt. Although the credit agreement governing our credit facility contains restrictions on the incurrence of additional indebtedness, these restrictions are subject to a number of qualifications and exceptions. The additional indebtedness incurred in compliance with these restrictions could be substantial. In addition, the credit agreement and the indenture governing our Senior Notes due 2025 and 2028, will not prevent us from incurring obligations that do not constitute indebtedness. If new

debt is added to our current debt levels, or we incur other obligations, the related risks that we now face could increase.

We may not be able to generate enough cash to service all our indebtedness and may be forced to take other actions to satisfy our obligations under our indebtedness, which may not be successful, and could harm our business and prospects.

Our ability to make scheduled payments on or refinance our debt obligations depends on our financial condition and operating performance, which are subject to prevailing economic and competitive conditions and to certain financial, business, legislative, regulatory and other factors, some of which are beyond our control. We may be unable to maintain a level of cash flows from operating activities sufficient to permit us to pay the principal, premium, if any, and interest on our indebtedness.

If our cash flows and capital resources are insufficient to fund our debt service obligations, we could face substantial liquidity problems and could be forced to reduce or delay investments and capital expenditures or to dispose of material assets or operations, seek additional debt or equity capital, or restructure or refinance our indebtedness. We may not be able to effect any such alternative measures, if necessary, on commercially reasonable terms or at all and, even if successful, those alternative actions may not allow us to meet our scheduled debt service obligations. Our debt agreements restrict our ability to dispose of assets and use the proceeds from those dispositions and may also restrict our ability to raise debt or equity capital to be used to repay other indebtedness when it becomes due. We may not be able to consummate those dispositions or to obtain proceeds in an amount sufficient to meet any debt service obligations then due.

Our inability to generate sufficient cash flows to satisfy our debt obligations, or to refinance our indebtedness on commercially reasonable terms or at all, would materially and adversely affect our ability to satisfy our debt obligations.

If we cannot make scheduled payments on our debt, we will be in default and the lenders under our credit facility could terminate their commitments to loan money, the lenders could foreclose against the assets securing their borrowings, the holders of our Senior Notes could declare all outstanding principal, premium, if any, and interest to be due and payable, and we could be forced into bankruptcy or liquidation. These events could result in a loss of your investment.

We are required to comply with certain financial and operating covenants under our debt agreements. Any failure to comply with those covenants could cause amounts borrowed to become immediately due and payable and/or prevent us from borrowing under the credit facility.

We are required to comply with specified financial and operating covenants under our debt agreements and to make payments under our debt, which limit our ability to operate our business as we otherwise might operate it. Our failure to comply with any of these covenants or to meet any debt payment obligations could result in an event of default which, if not cured or waived, would result in any amounts outstanding, including any accrued interest and/or unpaid fees, becoming immediately due and payable. We might not have enough working capital or liquidity to satisfy any repayment obligations if those obligations were accelerated. In addition, if we are not in compliance with the financial and operating covenants under the credit facility when we wish to borrow funds, we will be unable to borrow funds to pursue certain corporate initiatives, including strategic acquisitions, which could adversely affect our business and prospects.

V. Risks Related to Our Common Stock

Our stock price has been volatile, which may make it harder to resell shares at a favorable time and price.

Market prices for securities of software companies are generally volatile and are subject to significant fluctuations that may be unrelated or disproportionate to the operating performance of these companies. Accordingly, the trading prices and valuations of software companies' stocks, and of ours, may not be predictable. Negative changes in the public's perception of the prospects of software companies, or of PTC or the markets we serve, could depress our stock price regardless of our operating results.

Also, a large percentage of our common stock is held by institutional investors. Purchases and sales of our common stock by these investors could have a significant impact on the market price of our stock.

If our results of operations do not meet market or analysts' expectations, our stock price could decline.

Our quarterly operating results fluctuate depending on many factors, including the effect of ASC 606 on revenue recognition for the on-premises software subscriptions we offer, variability in the timing of start dates for our subscription offerings, length of contracts, and renewals, and significant unexpected expenses in a quarter. Accordingly, our quarterly results are difficult to predict and we may be unable to confirm or adjust expectations with respect to our operating results for a quarter until that quarter has closed. If our quarterly operating results do not meet market or analysts' expectations, our stock price could decline.

VI. General Risk Factors

Our international businesses present economic and operating risks, which could adversely affect our business and prospects.

We expect that our international operations will continue to expand and to account for a significant portion of our total revenue. Because we transact business in various foreign currencies, the volatility of foreign exchange rates has had and may in the future have a material adverse effect on our revenue, expenses, cash flows and operating results.

Other risks inherent in our international operations include, but are not limited to, the following:

- difficulties in staffing and managing foreign sales and development operations;
- exposure of our operations and employees to political instability and armed conflict in the countries and regions in which we operate, including Israel;
- increased financial accounting and reporting burdens and complexities;
- increased regulatory and compliance risks;
- inadequate local infrastructure; and
- greater difficulty in protecting our intellectual property.

We may have exposure to additional tax liabilities and our effective tax rate may increase or fluctuate, which could increase our income tax expense, reduce our net income, and increase our tax payment obligations.

As a multinational organization, we are subject to income taxes as well as non-income based taxes in the U.S. and in various foreign jurisdictions. Significant judgment is required in determining our worldwide income tax provision and other tax liabilities. In the ordinary course of a global business, there are many intercompany transactions and calculations where the ultimate tax determination is uncertain. Our tax returns are subject to review by various taxing authorities. Although we believe that our tax estimates are reasonable, the final determination of tax audits or tax disputes could be different from what is reflected in our reported income tax provisions and accruals.

Our effective tax rate and tax payment obligations can be adversely affected by several factors, many of which are outside of our control, including:

- changes in tax laws (for example, the introduction of an amendment to Section 174 of the U.S. tax legislation), regulations, and interpretations in multiple jurisdictions in which we operate;
- assessments, and any related tax interest or penalties, by taxing authorities;
- changes in the relative proportions of revenues and income before taxes in the various jurisdictions in which we operate that have differing statutory tax rates;
- changes to the financial accounting rules for income taxes;
- unanticipated changes in tax rates; and
- changes to a valuation allowance on net deferred tax assets, if any.

ITEM 1B. Unresolved Staff Comments

None.

Item 1C. Cybersecurity

We are subject to various cybersecurity risks in connection with our business. For more information on our cybersecurity related risks, see the section entitled “Risks Related to Our Business Operations and Industry” in Item 1A of this Annual Report.

Our Approach

PTC takes a holistic, multi-layered approach to cybersecurity and privacy that combines traditional Defense-in-Depth methods with next-generation Zero Trust principles. In today's globally interconnected world, we consider every entry point on the attack surface critical, and we aim to secure the points under our control. In developing our cybersecurity risk management program, we are informed by industry benchmarks and standards, including the cybersecurity framework created by the National Institute of Standards and Technology (“NIST”). We also have various security-related certifications and authorizations, including ISO 27001, SOC 2 Type II and FedRAMP, for certain of our products and services.

People. PTC recognizes that technology alone cannot mitigate all security threats, so we focus on developing our most critical resource: our people. Security is the responsibility of everyone employed by PTC and is independent of departmental affiliation. PTC's corporate cybersecurity awareness activities are combined with enterprise-wide and department-specific tools and mandatory employee training, providing everyone employed by PTC with the knowledge and resources to support our efforts to mitigate security threats.

Process. An educated workforce needs a governance framework to guide and monitor its activities. PTC has processes and policies in place to try to anticipate security risks and facilitate compliance with applicable contractual obligations, regulations and standards, as well as address any incidents or violations. PTC focuses on continuous improvement and is constantly maturing its processes to keep pace with the rapidly evolving cybersecurity threat landscape.

Technology. PTC seeks to automate these processes and remove the potential for human error to the extent feasible by implementing technology solutions. From fundamental IT security to development of our software products and keeping our customers' data safe in the cloud, PTC aims to maintain a secure infrastructure that is continuously monitored for possible threats.

These three key elements of people, process, and technology are tightly interwoven to support our aim to secure our environments and data.

Governance

Cybersecurity is a risk area with oversight at the highest levels of the organization, including the Executive and Board Level. The overall operational program is led by the Cybersecurity Strategy Council, a cross-functional team of executives and subject matter experts, including our Chief Product Security Officer, Chief Information Security Officer and Chief Compliance Officer. The Cybersecurity Strategy Council oversees a “Three Lines Model” of Operations, Risk Monitoring and Oversight, and Audit, to effectively address cybersecurity, risk management and control. All Cybersecurity, Risk and Internal Audit functions report to the PTC Executive Leadership Team.

PTC's Cybersecurity Program is supported by robust processes and procedures at all levels. Our matrixed cybersecurity organization is governed by industry-standard frameworks, and to ensure that they are executed, we involve the Executive Leadership Team, the Cybersecurity Strategy Council, and business unit security leads and cybersecurity analysts across the enterprise. We provide regular updates on our cybersecurity strategic plans, programs, and initiatives, and vulnerabilities and any applicable remediation efforts to the Cybersecurity Committee of the Board of Directors at its four regularly scheduled meetings per year. Our Incident Response Plans provide for notice, and continued updates, to the Cybersecurity Committee of applicable incidents on a timely basis. Ongoing program assessments are performed to monitor progress and identify opportunities for growth.

Risk Assessment

PTC conducts an annual cybersecurity maturity assessment. Periodically, we engage a third-party security consulting firm to conduct an Enterprise Security Maturity Assessment. This independent assessment provides a mechanism to benchmark our current risk profile and enables us to measure progress as we make program improvements. Identified cybersecurity risks are reviewed by the Cybersecurity Strategy Council, which ensures that risk tolerances are established and used to appropriately manage risks.

Third-Party Vendor Risk Management

Our Vendor Risk Management (VRM) program supports PTC in meeting its cybersecurity, privacy, regulatory and compliance obligations and managing risk associated with third-party vendors who have access to PTC IT systems and data. Prior to outsourcing or allowing third-party access to PTC or customer systems, IP, or data; risks associated with such activity are clearly identified and documented. The process of selecting a third-party vendor includes due diligence of the vendor service or product in question. Third-party companies using PTC facilities or accessing PTC's IT Systems are subject to PTC's VRM review and are required to demonstrate that proper security measures are in place before they have access to any PTC IT systems or data. All such vendors are to be approved by PTC's VRM process and contractually bound to maintain appropriate cybersecurity technical and organization measures and to protect PTC's data to which they may have access.

Incident Response

PTC maintains a formal Cybersecurity Incident Response Policy to address cybersecurity incidents. The Policy is tested on a regular basis, including a continuous improvement program involving periodic tabletop exercises. Cybersecurity incident handling is managed by individual organizations with cybersecurity responsibility and monitored/guided by applicable corporate functions. All Cybersecurity Incident Response Plans under the Policy are based on industry standards, such as the NIST Computer Security Incident Handling Guide – Special Publication 800-61.

Management's Role in Assessing and Managing Our Risks from Cybersecurity Threats

Our Cybersecurity Program is overseen by executives on our Executive Leadership Team and managed by our Cybersecurity Strategy Council, including our Senior Vice President, Chief Information Security Officer (CISO), who reports to our Executive Vice President, Chief Digital Officer (CDO). Our CISO is responsible for day-to-day risk management activities, including staying informed about and monitoring prevention, detection, mitigation, and remediation efforts through regular communication and reporting from professionals in the information security team, and the use of technological tools and software. Our CDO is responsible for our broader IT program, which includes PTC's ability to remediate and recover from a cybersecurity incident while reducing impacts to the business and operations. Our CDO and CISO regularly report directly to the Cybersecurity Committee of the Board of Directors on our Cybersecurity Program and efforts to prevent, detect, mitigate, and remediate issues. In addition, we have an escalation process in place to inform senior management and the Cybersecurity Committee and the Board of Directors of material issues.

Management Experience

Our CDO and CISO have extensive experience assessing and managing cybersecurity programs and cybersecurity risk. Our CDO joined PTC as Chief Digital Officer in January 2022 and is responsible for PTC's global information technology (IT) team, overseeing PTC's digital infrastructure and working with business leaders to guide PTC's digital process optimization strategy. He has more than two decades of IT and operations leadership. Before joining PTC, he served as Global Vice President and Chief Information Officer for Avaya, where he led a globally-dispersed team of 1,200 IT professionals to support the entire global Avaya enterprise. Prior to Avaya, he held technology leadership roles at Arise Virtual Solutions Inc., Oracle, and Colorado College.

Our CISO joined PTC as Cyber Information Security Officer in April 2022 and, before joining PTC, was the Vice President, Information Technology, North America and Europe for Alorica, where he led Alorica's transformation to a secure endpoint architecture for 90,000 global remote and hybrid employees.

ITEM 2. Properties

We currently have 75 office locations used in operations in the United States and internationally, predominately as sales and/or support offices and for research and development work. Of our total of approximately 1,060,000 square feet of leased facilities used in operations, approximately 401,000 square feet are located in the U.S., including approximately 250,000 square feet at our headquarters facility located in Boston, Massachusetts, and approximately 268,000 square feet are located in India, where a significant amount of our research and development is conducted.

ITEM 3. Legal Proceedings

None.

ITEM 4. Mine Safety Disclosures

Not applicable.

PART II

ITEM 5. Market for Registrant's Common Equity, Related Stockholder Matters and Issuer Purchases of Equity Securities

Our common stock is traded on the Nasdaq Global Select Market under the symbol "PTC."

On September 30, 2024, the close of our fiscal year, and on November 12, 2024, our common stock was held by 884 and 877 shareholders of record, respectively.

ITEM 6. [Reserved]

ITEM 7. Management's Discussion and Analysis of Financial Condition and Results of Operations

Operating and Non-GAAP Financial Measures

Our discussion of results includes discussion of our ARR (Annual Run Rate) operating measure, non-GAAP financial measures, and disclosure of our results on a constant currency basis. ARR and our non-GAAP financial measures, including the reasons we use those measures, are described below in *Results of Operations - Operating Measure* and *Results of Operations - Non-GAAP Financial Measures*, respectively. The methodology used to calculate constant currency disclosures is described in *Results of Operations - Impact of Foreign Currency Exchange on Results of Operations*. You should read those sections to understand our operating measure, non-GAAP financial measures, and constant currency disclosures.

Executive Overview

Despite the overall demand environment, which has been challenging for many quarters now, ARR grew 14% (12% constant currency) to \$2.25 billion as of the end of FY'24 compared to FY'23.

Cash provided by operating activities grew 23% to \$750 million in FY'24 compared to FY'23. Free cash flow grew 25% to \$736 million in FY'24 compared to FY'23. Our cash flow growth is attributable to solid top-line growth due to our subscription business model and operational discipline. Interest payments were \$47 million higher in FY'24 compared to FY'23, mainly due to the payment of \$30 million of imputed interest on a deferred acquisition payment associated with our 2023 acquisition of ServiceMax and incremental interest expense associated with borrowings in FY'23 and FY'24. We ended FY'24 with cash and cash equivalents of \$266 million and gross debt of \$1.75 billion, which debt carried an aggregate weighted average interest rate of 5.1%.

Revenue grew 10% (9% constant currency) in FY'24 compared to FY'23. Our acquisition of ServiceMax in early Q2'23 contributed to FY'24 revenue growth. Under ASC 606, the timing of revenue recognition for on-premises subscription revenue can vary significantly, impacting reported revenue and growth rates.

Results of Operations

The following table shows the measures that we consider the most significant indicators of our business performance. In addition to providing operating income, operating margin, diluted earnings per share and cash from operations as calculated under GAAP, we provide our ARR operating measure and non-GAAP operating income, non-GAAP operating margin, non-GAAP diluted earnings per share, and free cash flow for the reported periods. We also provide a view of our actual results on a constant currency basis. Our non-GAAP financial measures exclude the items described in *Non-GAAP Financial Measures* below. Investors should use our non-GAAP financial measures only in conjunction with our GAAP results.

For discussion of our FY'23 results and comparison to our FY'22 results, refer to *Management's Discussion and Analysis of Financial Conditions and Results of Operations* in our Annual Report on Form 10-K for the year ended September 30, 2023.

(Dollar amounts in millions, except per share data)

	Year ended September 30,		Percent Change	
	2024	2023	Actual	Constant Currency ⁽¹⁾
ARR	\$ 2,254.7	\$ 1,978.6	14%	12%
Total recurring revenue ⁽²⁾	\$ 2,134.0	\$ 1,907.9	12%	12%
Perpetual license	32.2	38.6	(17)%	(16)%
Professional services	132.2	150.5	(12)%	(12)%
Total revenue	2,298.5	2,097.1	10%	9%
Total cost of revenue	444.8	441.0	1%	1%
Gross margin	1,853.7	1,656.0	12%	12%
Operating expenses	1,265.6	1,197.6	6%	6%
Operating income	\$ 588.1	\$ 458.5	28%	27%
Non-GAAP operating income ⁽¹⁾	\$ 894.3	\$ 758.9	18%	17%
Operating margin	25.6%	21.9%		
Non-GAAP operating margin ⁽¹⁾	38.9%	36.2%		
Diluted earnings per share	\$ 3.12	\$ 2.06		
Non-GAAP diluted earnings per share ⁽¹⁾	\$ 5.08	\$ 4.34		
Cash provided by operating activities	\$ 750.0	\$ 610.9		
Capital expenditures	(14.4)	(23.8)		
Free cash flow	\$ 735.6	\$ 587.0		

(1) See *Non-GAAP Financial Measures* below for a reconciliation of our GAAP results to our non-GAAP financial measures and *Impact of Foreign Currency Exchange on Results of Operations* below for a description of how we calculate our results on a constant currency basis.

(2) Recurring revenue is comprised of on-premises subscription, perpetual support, SaaS, and hosting services revenue.

Impact of Foreign Currency Exchange on Results of Operations

Approximately 50% of our revenue and 35% of our expenses are transacted in currencies other than the U.S. Dollar. Because we report our results of operations in U.S. Dollars, currency translation, particularly changes in the Euro, Yen, Shekel, and Rupee relative to the U.S. Dollar, affects our reported results. Changes in foreign currency exchange rates were a slight tailwind to reported income statement results in FY'24. ARR was positively impacted by improvements in currency exchange rates, particularly the Euro to U.S. Dollar exchange rate, as of September 30, 2024 compared to September 30, 2023.

The results of operations in the table above, and the tables and discussions below about revenue by line of business and product group present both actual percentage changes year over year and percentage changes on a constant currency basis. Our constant currency disclosures are calculated by multiplying the results in local currency for FY'24 and FY'23 by the exchange rates in effect on September 30, 2023. If FY'24 reported results were converted into U.S. Dollars using the rates in effect as of September 30, 2023, ARR would have been lower by \$47 million, revenue would have been lower by \$22 million, and expenses would have been lower by \$10 million. If FY'23 reported results were converted into U.S. Dollars using the rates in effect as of September 30, 2023, ARR would have been the same, revenue would have been lower by \$17 million, and expenses would have been lower by \$12 million.

Revenue

Under ASC 606, the volume, mix, and duration of contract types (support, SaaS, on-premises subscription) starting or renewing in any given period can have a material impact on revenue in the period, and as a result can impact the comparability of reported revenue period over period. We recognize revenue for the license portion of on-premises subscription contracts up front when we deliver the licenses to the customer, typically on the start date, and we recognize revenue on the support portion of on-premises subscription contracts and stand-alone support contracts ratably over the term. We continue to convert existing support contracts to on-premises subscriptions, resulting in a shift to up-front recognition of on-premises subscription license revenue in the period converted compared to ratably recognition for a perpetual support contract. Revenue from our cloud services (primarily SaaS) contracts is recognized ratably. We expect that over time a higher portion of our revenue will be recognized ratably as we expand our SaaS offerings, release additional cloud functionality into our products, and migrate customers from on-premises subscriptions to SaaS. Given the different mix, duration and volume of new and renewing contracts in any period, year-over-year or sequential revenue can vary significantly.

Revenue by Line of Business

(Dollar amounts in millions)

	Year ended September 30,		Percent Change	
	2024	2023	Actual	Constant Currency
License ⁽¹⁾	\$ 806.9	\$ 747.0	8%	8%
Support and cloud services ⁽²⁾	1,359.4	1,199.5	13%	13%
Software revenue	2,166.2	1,946.6	11%	11%
Professional services	132.2	150.5	(12)%	(12)%
Total revenue	<u>\$ 2,298.5</u>	<u>\$ 2,097.1</u>	10%	9%

(1) Includes perpetual licenses and the license portion of on-premises subscription sales.

(2) Includes support on perpetual licenses, the support portion of on-premises subscription sales, SaaS, and hosting services.

Software revenue growth in FY'24 was driven by PLM, which included the contribution from ServiceMax (acquired in early Q2'23), and CAD.

License revenue growth in FY'24 was mainly driven by CAD and PLM growth in Europe and Asia Pacific, offset by lower license revenue in the Americas, particularly in PLM. A higher proportion of sales in FY'24 were SaaS, which adversely affected license revenue growth in the Americas and Europe.

Support and cloud services revenue growth in FY'24 was mainly driven by PLM (which included contribution from ServiceMax) in the Americas and Europe.

Professional services revenue decreased in FY'24 as we continue to execute on our strategy of leveraging partners to deliver services rather than contracting to deliver services ourselves.

Software Revenue by Product Group

(Dollar amounts in millions)

	Year ended September 30,		Percent Change	
	2024	2023	Actual	Constant Currency
PLM	\$ 1,333.4	\$ 1,186.0	12%	12%
CAD	832.8	760.6	9%	10%
Software revenue	<u>\$ 2,166.2</u>	<u>\$ 1,946.6</u>	11%	11%

PLM software revenue growth in FY'24 was driven by growth in Europe and the contribution from ServiceMax (acquired in early Q2'23). Year-over-year PLM software revenue growth for FY'24 excluding Q1'24 ServiceMax revenue would have been 9% (9% constant currency).

PLM ARR grew 15% (13% constant currency) from September 30, 2023 to September 30, 2024.

CAD software revenue growth in FY'24 was primarily driven by revenue growth in Europe and Asia Pacific.

CAD ARR grew 13% (10% constant currency) from September 30, 2023 to September 30, 2024.

Gross Margin

(Dollar amounts in millions)

	Year ended September 30,		Percent Change
	2024	2023	
License gross margin	\$ 760.0	\$ 693.8	10%
License gross margin percentage	94%	93%	
Support and cloud services gross margin	\$ 1,084.8	\$ 954.5	14%
Support and cloud services gross margin percentage	80%	80%	
Professional services gross margin	\$ 8.9	\$ 7.7	15%
Professional services gross margin percentage	7%	5%	
Total gross margin	\$ 1,853.7	\$ 1,656.0	12%
Total gross margin percentage	81%	79%	
Non-GAAP gross margin ⁽¹⁾	\$ 1,913.6	\$ 1,712.6	12%
Non-GAAP gross margin percentage ⁽¹⁾	83%	82%	

(1) Non-GAAP financial measures are reconciled to GAAP results under *Non-GAAP Financial Measures* below.

License gross margin grew at a higher rate than license revenue in FY'24 due mainly to lower intangible amortization expense. Excluding intangible amortization expense, license gross margin percentage was consistent year over year.

Support and cloud services gross margin growth in FY'24 was in line with support and cloud services revenue growth. Cost of support and cloud services in FY'24 grew at a similar rate to revenue, driven by higher intangible amortization expense, compensation expense, and royalty expense.

Professional services gross margin increased in FY'24 compared to FY'23, primarily due to lower outside service costs, partially offset by decreases in professional services revenue. The decreases in professional services revenue and costs are due to our continued execution on our strategy of leveraging partners to deliver services rather than contracting to deliver services ourselves.

Operating Expenses

(Dollar amounts in millions)

	Year ended September 30,		Percent Change
	2024	2023	
Sales and marketing	\$ 559.0	\$ 530.1	5%
% of total revenue	24%	25%	
Research and development	433.0	394.4	10%
% of total revenue	19%	19%	
General and administrative	232.4	233.5	(0)%
% of total revenue	10%	11%	
Amortization of acquired intangible assets	42.0	40.0	5%
% of total revenue	2%	2%	
Restructuring and other credits, net	(0.8)	(0.5)	74%
% of total revenue	0%	0%	
Total operating expenses	<u>\$ 1,265.6</u>	<u>\$ 1,197.6</u>	6%

Total headcount increased by 4% between September 30, 2023 and September 30, 2024.

Operating expenses in FY'24 compared to FY'23 increased primarily due to the following:

- a \$47 million increase in compensation and benefits expense (excluding stock-based compensation), driven by higher headcount and our Q2'23 acquisition of ServiceMax, as well as higher health insurance costs in the U.S.;
- a \$16 million increase in stock-based compensation expense, driven in part by acceleration of expense on equity grants held by our former chief executive and chief operating officers (which expense is included in General and administrative and Sales and marketing), as well as the impact of an FY'24 change in eligibility for continued vesting upon retirement for a subset of prospective equity grants;
- a \$14 million increase in outside services, driven by consulting services related to corporate initiatives; and
- a \$10 million increase in software subscription related costs;

partially offset by:

- a \$16 million decrease in acquisition and transaction-related costs, largely driven by costs associated with our Q2'23 acquisition of ServiceMax; and
- a \$12 million decrease in marketing expense, primarily due to not holding our LiveWorx event in FY'24.

Interest Expense

(Dollar amounts in millions)

	Year ended September 30,		Percent Change
	2024	2023	
Interest expense	\$ (119.7)	\$ (129.4)	(8)%

Interest expense includes interest on our credit facility loans and our Senior Notes due 2025 and 2028. Interest expense in FY'23 also included \$30 million of interest on a deferred acquisition payment associated with the ServiceMax acquisition. The decrease in interest expense was driven by the lower aggregate average of debt and deferred acquisition payment liability balances outstanding in FY'24 compared to FY'23.

Other Income

(Dollar amounts in millions)

	Year ended September 30,		Percent Change
	2024	2023	
Interest income	\$ 4.4	\$ 5.4	(19)%
Other expense, net	(3.8)	(1.9)	(103)%
Other income, net	\$ 0.6	\$ 3.5	(84)%

Other income, net was lower in FY'24 compared to FY'23 due to a \$2.0 million impairment loss related to an available-for-sale debt security.

Income Taxes

(Dollar amounts in millions)

	Year ended September 30,		Percent Change
	2024	2023	
Income before income taxes	\$ 469.0	\$ 332.6	41%
Provision for income taxes	92.6	87.0	6%
Effective income tax rate	20%	26%	

The effective tax rate for FY'24 was lower than the effective rate for FY'23. In FY'24, the rate was impacted by a U.S. Tax Court ruling in *Varian Medical Systems, Inc. v. Commissioner*, issued on August 26, 2024. The ruling related to the U.S. taxation of deemed foreign dividends in the transition year of the Tax Act (our fiscal 2018). As a result, we recorded a \$14.4 million benefit for additional foreign tax credits that have become available to us. Additionally, our rate included a net benefit of \$4.4 million for the effects of Internal Revenue Service (IRS) procedural guidance requiring consent for previously automatic changes of accounting method. The IRS procedural guidance change significantly increased our estimated taxable income in the year ended September 30, 2024, resulting in an increase to the estimated tax benefit for the deductions associated with Global Intangible Low-Taxed Income and Foreign-Derived Intangible Income. The benefit from this IRS procedural guidance change will reverse in a future fiscal period if we receive IRS consent for a change in the treatment of these deductions. These benefits were offset by a tax expense of \$4.6 million related to a tax reserve in a foreign jurisdiction. FY'23 included tax expense of \$21.8 million related to an uncertain tax position regarding transfer pricing in a foreign jurisdiction where we are currently under audit. Our FY'23 rate was also impacted by tax expense of \$6.3 million related to non-deductible imputed interest related to the deferred payment on the acquisition of ServiceMax.

In the normal course of business, PTC and its subsidiaries are examined by various taxing authorities, including the IRS in the United States. We regularly assess the likelihood of additional assessments by tax authorities and provide for these matters as appropriate. We are currently under audit by tax authorities in several jurisdictions including Germany, Ireland, and Italy. Audits by tax authorities typically involve examination of the deductibility of certain permanent items, transfer pricing, limitations on net operating losses, and tax credits.

Liquidity and Capital Resources

(in millions)

	September 30,	
	2024	2023
Cash and cash equivalents	\$ 265.8	\$ 288.1
Restricted cash	0.7	0.7
Total	<u>\$ 266.5</u>	<u>\$ 288.8</u>

(in millions)

	Year ended September 30,	
	2024	2023
Net cash provided by operating activities	\$ 750.0	\$ 610.9
Net cash used in investing activities	\$ (124.8)	\$ (866.1)
Net cash provided by (used in) financing activities	\$ (650.7)	\$ 268.3

Cash, Cash Equivalents and Restricted Cash

We invest our cash with highly rated financial institutions. Cash and cash equivalents include highly liquid investments with original maturities of three months or less.

Due to the stability of our subscription model and consistency of annual, up-front billing, we aim to maintain a low cash balance. A significant portion of our cash is generated and held outside the U.S. As of September 30, 2024, we had cash and cash equivalents of \$36 million in the U.S., \$127 million in Europe, \$86 million in Asia Pacific (including India), and \$17 million in other non-U.S. countries. We have substantial cash requirements in the U.S. but believe that the combination of our existing U.S. cash and cash equivalents, cash available under our revolving credit facility, future U.S. operating cash flows, and our ability to repatriate cash to the U.S. will be sufficient to meet our ongoing U.S. operating expenses and known capital requirements.

Cash Provided by Operating Activities

Cash provided by operating activities increased by \$139.1 million in FY'24 compared to FY'23. This increase was driven by higher collections (including contribution from ServiceMax), which were partially offset by higher salary-related and interest payments. Interest payments in FY'24 were approximately \$47.2 million higher than in FY'23 and include the payment of \$30.0 million of imputed interest on the ServiceMax deferred acquisition payment.

Cash Used in Investing Activities

Cash used in investing activities in FY'24 was driven by the acquisition of pure-systems for \$93.5 million in Q1'24. Cash used in investing activities in FY'23 was driven by a payment of \$828.2 million in Q2'23 related to the acquisition of ServiceMax. Capital expenditures in FY'24 were lower than in FY'23 as we invest more in cloud-based rather than on-premises software.

Cash Provided by (Used in) Financing Activities

Cash used in financing activities in FY'24 included \$620.0 million paid to settle a deferred acquisition payment associated with our acquisition of ServiceMax, Q1'24 borrowings of \$739.8 million to fund that payment and the pure-systems acquisition, and subsequent net payments on debt of \$693.9 million.

Cash provided by financing activities in FY'23 was primarily related to net new borrowings of \$771.0 million (a \$500.0 million term loan and a \$271.0 million incremental revolving line) to fund the ServiceMax acquisition and net repayments of \$428.0 million on the new revolving facility.

Outstanding Debt

(in millions)

	September 30,	
	2024	2023
4.000% Senior Notes due 2028	\$ 500.0	\$ 500.0
3.625% Senior Notes due 2025	500.0	500.0
Credit facility revolver line	262.0	202.0
Credit facility term loan	490.6	500.0
Total debt	1,752.6	1,702.0
Unamortized debt issuance costs for the Senior Notes	(4.1)	(6.2)
Total debt, net of issuance costs	\$ 1,748.6	\$ 1,695.8
Undrawn under credit facility revolver	\$ 988.0	\$ 1,048.0
Undrawn under credit facility revolver available to borrow	\$ 972.1	\$ 384.6

As of September 30, 2024, we were in compliance with all financial and operating covenants of the credit facility and the Senior Note indentures. As of September 30, 2024, the annual rates for borrowings outstanding under the credit facility revolver line and term loan were 7.0% and 6.9%, respectively.

In addition to the debt shown in the above table, as of September 30, 2023, we had a \$620 million deferred acquisition payment liability related to the fair value of the \$650 million installment paid in October 2023 for the ServiceMax acquisition. Of the \$650 million paid, \$620 million was recorded as a financing outflow and the \$30 million of imputed interest was recorded as an operating cash outflow.

Our credit facility and our Senior Notes, including the financial and operating covenants and limitations on the payment of dividends, are described in *Note 9. Debt* of Notes to the Consolidated Financial Statements in this Annual Report.

Share Repurchase Authorization

Our Articles of Organization authorize us to issue up to 500 million shares of our common stock. Our Board of Directors has authorized us to repurchase up to \$2 billion of our common stock in the period October 1, 2024 through September 30, 2027. We may use cash from operations and borrowings under our credit facility to make any such repurchases. All shares of our common stock repurchased are automatically restored to the status of authorized and unissued.

Our long-term goal is to return approximately 50% of our free cash flow to shareholders via share repurchases, while also taking into consideration the interest rate environment and strategic initiatives and acquisitions, which could cause us to reduce, suspend, or cease repurchases. We currently intend to repurchase approximately \$300 million of our common stock in FY'25.

Expectations for 2025

We believe that existing cash and cash equivalents, together with cash generated from operations and amounts available under the credit facility, will be sufficient to meet our working capital and capital expenditure requirements through at least the next twelve months, including redemption of the 3.625% Senior Notes in February 2025, and to meet our known long-term capital requirements.

Our expected uses and sources of cash could change, our cash position could be reduced, and we could incur additional debt obligations if we retire other debt, engage in strategic transactions, or repurchase shares, any of which could be commenced, suspended, or completed at any time. Any such repurchases or retirement of debt will depend on prevailing market conditions, our liquidity requirements, contractual restrictions and other factors. The amounts involved in any debt retirement or issuance, share repurchases, or strategic transactions may be material.

Contractual Obligations

At September 30, 2024, our future contractual obligations were related to debt, leases, pension liabilities, unrecognized tax benefits, and purchase obligations. See *Note 9. Debt*, *Note 17. Leases*, *Note 14. Pension Plans*, and *Note 8. Income Taxes* of Notes to Consolidated Financial Statements in this Annual Report for information about those obligations, which Notes are incorporated by reference into this section. Our purchase obligations were approximately \$163.2 million, with \$88.2 million expected to be paid in FY'25 and \$75.0 million thereafter. Purchase obligations represent minimum commitments due to third parties, including royalty contracts, research and development contracts, telecommunication contracts, information technology maintenance contracts in support of internal-use software and hardware, financing leases, operating leases with original terms of less than 12 months, and other marketing and consulting contracts. Contracts for which our commitment is variable or based on volumes with no fixed minimum quantities and contracts that can be canceled without payment penalties are not included in the purchase obligation amounts above. The purchase obligations included above are in addition to amounts included in Current liabilities and Prepaid expenses recorded on our September 30, 2024 Consolidated Balance Sheet.

As of September 30, 2024, we had letters of credit and bank guarantees outstanding of approximately \$15.6 million (of which \$0.6 million was collateralized).

Operating Measure

ARR

ARR (Annual Run Rate) represents the annualized value of our portfolio of active subscription software, SaaS, hosting, and support contracts as of the end of the reporting period. We calculate ARR as follows:

- We consider a contract to be active when the product or service contractual term commences (the “start date”) until the right to use the product or service ends (the “expiration date”). Even if the contract with the customer is executed before the start date, the contract will not count toward ARR until the customer right to receive the benefit of the products or services has commenced.
- For contracts that include annual values that increase over time, which we refer to as ramp contracts, we include in ARR only the annualized value of components of the contract that are considered active as of the date of the ARR calculation. We do not include any future committed increases in the contract value as of the date of the ARR calculation.
- As ARR includes only contracts that are active at the end of the reporting period, ARR does not reflect assumptions or estimates regarding future customer renewals or non-renewals.
- Active contracts are annualized by dividing the total active contract value by the contract duration in days (expiration date minus start date), then multiplying that by 365 days (or 366 days for leap years).

We believe ARR is a valuable operating measure to assess the health of a subscription business because it is aligned with the amount that we invoice the customer on an annual basis. We generally invoice customers annually for the current year of the contract. A customer with a one-year contract will typically be invoiced for the total value of the contract at the beginning of the contractual term, while a customer with a multi-year contract will be invoiced for each annual period at the beginning of each year of the contract.

ARR increases by the annualized value of active contracts that commence in a reporting period and decreases by the annualized value of contracts that expire in the reporting period.

As ARR is not annualized recurring revenue, it is not calculated based on recognized or unearned revenue and is not affected by variability in the timing of revenue under ASC 606, particularly for on-premises license subscriptions where a substantial portion of the total value of the contract is recognized as revenue at a point in time upon the later of when the software is made available, or the subscription term commences.

ARR should be viewed independently of recognized and unearned revenue and is not intended to be combined with, or to replace, either of those items. Investors should consider our ARR operating measure only in conjunction with our GAAP financial results.

Non-GAAP Financial Measures

The non-GAAP financial measures presented in the discussion of our results of operations and the respective most directly comparable GAAP measures are:

- free cash flow—cash flow from operations
- non-GAAP gross margin—GAAP gross margin
- non-GAAP operating income—GAAP operating income
- non-GAAP operating margin—GAAP operating margin

- non-GAAP net income—GAAP net income
- non-GAAP diluted earnings per share—GAAP diluted earnings per share

Free cash flow is cash flow from operations net of capital expenditures, which are expenditures for property and equipment and consist primarily of facility improvements, office equipment, computer equipment, and software. We believe that free cash flow, in conjunction with cash from operations, is a useful measure of liquidity since capital expenditures are a necessary component of ongoing operations. Free cash flow is not a measure of cash available for discretionary expenditures.

The non-GAAP financial measures other than free cash flow exclude, as applicable: stock-based compensation expense; amortization of acquired intangible assets; acquisition and transaction-related charges included in General and administrative expenses; Restructuring and other charges (credits), net; non-operating charges (credits), net; and income tax adjustments.

Stock-based compensation is a non-cash expense relating to stock-based awards issued to executive officers, employees and outside directors, consisting of restricted stock units. We exclude this expense as it is a non-cash expense and we assess our internal operations excluding this expense and believe it facilitates comparisons to the performance of other companies in our industry.

Amortization of acquired intangible assets is a non-cash expense that is impacted by the timing and magnitude of our acquisitions. We believe the assessment of our operations excluding these costs is relevant to our assessment of internal operations and comparisons to the performance of other companies in our industry.

Acquisition and transaction-related charges included in General and administrative expenses are direct costs of potential and completed acquisitions and expenses related to acquisition integration activities, including transaction fees, due diligence costs, severance and professional fees. Subsequent adjustments to our initial estimated amount of contingent consideration associated with specific acquisitions are also included within acquisition and transaction-related charges. Other transactional charges include third-party costs related to structuring merger and acquisition transactions outside of ordinary business operations. We do not include these costs when reviewing our operating results internally. The occurrence and amount of these costs varies depending on the timing and size of acquisitions and transactions.

Restructuring and other charges (credits), net includes excess facility restructuring charges (credits); impairment and accretion expense charges related to the lease assets of exited facilities; sublease income from previously impaired facilities; severance charges resulting from substantial employee reduction actions; and third-party professional consulting fees related to modifications of our business strategy. These costs may vary in size based on our restructuring plan.

Non-operating charges (credits), net are gains or losses associated with sales or changes in value of assets or liabilities that are generally investing or financing in nature and are not indicative of our ongoing ordinary operating activities. In FY'24, we recognized an impairment charge related to an available-for-sale debt security. In FY'23, we recognized a financing charge for a debt commitment agreement associated with our acquisition of ServiceMax.

Income tax adjustments include the tax impact of the items above. Additionally, we exclude other material tax items that we do not include when reviewing our operating results internally. For example, in FY'24, adjustments include a charge related to a tax reserve related to prior years in a foreign jurisdiction. Adjustments in FY'23 include a charge related to an uncertain tax position in a foreign jurisdiction.

We use these non-GAAP financial measures, and we believe that they assist our investors, to make period-to-period comparisons of our operational performance because they provide a view of our operating results without items that are not, in our view, indicative of our core operating results. We believe that these non-GAAP financial measures help illustrate underlying trends in our business, and we use the measures to establish budgets and operational goals (communicated internally and externally)

for managing our business and evaluating our performance. We believe that providing non-GAAP financial measures also affords investors a view of our operating results that may be more easily compared to the results of other companies in our industry that use similar financial measures to supplement their GAAP results.

The items excluded from the non-GAAP financial measures often have a material impact on our financial results, certain of those items are recurring, and other such items often recur. Accordingly, the non-GAAP financial measures included in this Annual Report should be considered in addition to, and not as a substitute for or superior to, the comparable measures prepared in accordance with GAAP. The following tables reconcile each of these non-GAAP financial measures to its most closely comparable GAAP measure on our financial statements.

(in millions, except per share amounts)

	Year ended September 30,	
	2024	2023
GAAP gross margin	\$ 1,853.7	\$ 1,656.0
Stock-based compensation	21.4	20.9
Amortization of acquired intangible assets included in cost of revenue	38.5	35.7
Non-GAAP gross margin	\$ 1,913.6	\$ 1,712.6
GAAP operating income	\$ 588.1	\$ 458.5
Stock-based compensation	223.5	206.5
Amortization of acquired intangible assets	80.5	75.7
Acquisition and transaction-related charges	3.1	18.7
Restructuring and other credits, net	(0.8)	(0.5)
Non-GAAP operating income	\$ 894.3	\$ 758.9
GAAP net income	\$ 376.3	\$ 245.5
Stock-based compensation	223.5	206.5
Amortization of acquired intangible assets	80.5	75.7
Acquisition and transaction-related charges	3.1	18.7
Restructuring and other credits, net	(0.8)	(0.5)
Non-operating charges, net ⁽¹⁾	2.0	5.1
Income tax adjustments ⁽²⁾	(71.2)	(33.5)
Non-GAAP net income	\$ 613.4	\$ 517.6
GAAP diluted earnings per share	\$ 3.12	\$ 2.06
Stock-based compensation	1.85	1.73
Amortization of acquired intangible assets	0.67	0.63
Acquisition and transaction-related charges	0.03	0.16
Restructuring and other credits, net	(0.01)	—
Non-operating charges, net ⁽¹⁾	0.02	0.04
Income tax adjustments ⁽²⁾	(0.59)	(0.28)
Non-GAAP diluted earnings per share	\$ 5.08	\$ 4.34
Cash provided by operating activities	\$ 750.0	\$ 610.9
Capital expenditures	(14.4)	(23.8)
Free cash flow	\$ 735.6	\$ 587.0

- (1) In FY'24, we recognized an impairment loss of \$2.0 million on an available-for-sale debt security. In FY'23, we recognized \$4.2 million of financing charges for a debt commitment agreement associated with our acquisition of ServiceMax.
- (2) Income tax adjustments reflect the tax effects of non-GAAP adjustments which are calculated by applying the applicable tax rate by jurisdiction to the non-GAAP adjustments listed above. In FY'24, adjustments exclude a tax expense of \$4.4 million or \$0.04 per share for a tax reserve related to prior years in a foreign jurisdiction. In FY'23, non-GAAP expense excludes \$21.8 million or \$0.18 per share related to uncertain tax positions in a foreign jurisdiction.

Operating margin impact of non-GAAP adjustments:

	Year ended September 30,	
	2024	2023
GAAP operating margin	25.6%	21.9%
Stock-based compensation	9.7%	9.8%
Amortization of acquired intangible assets	3.5%	3.6%
Acquisition and transaction-related charges	0.1%	0.9%
Restructuring and other credits, net	(—)%	(—)%
Non-GAAP operating margin	38.9%	36.2%

Critical Accounting Policies and Estimates

We have prepared our consolidated financial statements in accordance with accounting principles generally accepted in the United States of America. In preparing our financial statements, we make estimates, assumptions and judgments that can have a significant impact on our reported revenues, results of operations, and net income, as well as on the value of certain assets and liabilities on our balance sheet. These estimates, assumptions and judgments are made based on our historical experience and on other assumptions that we believe to be reasonable under the circumstances. These estimates may change as new events occur or additional information is obtained, and we may periodically be faced with uncertainties, the outcomes of which are not within our control and may not be known for a prolonged period of time.

The accounting policies, methods and estimates used to prepare our financial statements are described generally in Note 2. *Summary of Significant Accounting Policies* of Notes to Consolidated Financial Statements in this Annual Report. The most important accounting judgments and estimates that we made in preparing the financial statements involved:

- revenue recognition;
- accounting for income taxes; and
- valuation of assets and liabilities acquired in business combinations.

A critical accounting policy is one that is both material to the presentation of our financial statements and requires us to make subjective or complex judgments that could have a material effect on our financial condition and results of operations. Critical accounting policies require us to make assumptions about matters that are uncertain at the time of the estimate, and different estimates that we could have used, or changes in the estimates that are reasonably likely to occur, may have a material impact on our financial condition or results of operations. Because the use of estimates is inherent in the financial reporting process, actual results could differ from those estimates.

Accounting policies, guidelines and interpretations related to our critical accounting policies and estimates are generally subject to numerous sources of authoritative guidance and are often reexamined by accounting standards rule makers and regulators. These rule makers and/or regulators may promulgate interpretations, guidance or regulations that may result in changes to our accounting policies, which could have a material impact on our financial position and results of operations.

Revenue Recognition

We record revenues in accordance with the guidance provided by ASC 606, *Revenue from Contracts with Customers*. For a full description of our revenue accounting policy, refer to Note 2. *Summary of Significant Accounting Policies*, included in the Notes to Consolidated Financial Statements in this Annual Report.

Our sources of revenue include: (1) subscriptions, (2) perpetual licenses, (3) support for perpetual licenses, and (4) professional services. Subscriptions include term-based on-premises licenses and related support, Software-as-a-Service (SaaS), and hosting services.

Determination of performance obligations. Our subscriptions are frequently sold as a bundle of products and services, typically pairing on-premises term software licenses with support and, for certain offerings, cloud services over the same term. Significant judgment is used in determining the performance obligations related to these bundled products and services. On-premises software is typically determined to be a distinct performance obligation and is thus recognized separately from the support and cloud components. On-premises software revenue is generally recognized at the point in time that the software is made available to the customer, while the support and cloud software revenue components are recognized ratably over the term of the contract. In cases where subscriptions include cloud functionality and on-premises software, an assessment has been performed to determine whether the cloud services are distinct from the on-premises software. In the substantial majority of instances, cloud services provide incremental functionality to customers and have been considered distinct and recognized separately from the on-premises software. This assessment could have a significant impact on the timing of revenue recognition and may change as our product offerings evolve.

Allocation of transaction price. We estimate the standalone selling price of each identified performance obligation and use that estimate to allocate the transaction price among said performance obligations. The estimated standalone selling price is determined using all information reasonably available to us, including market conditions and other observable inputs. Significant judgment is used in determining the standalone selling prices of the on-premises license, support, and cloud components of our subscription products. These estimates are subject to change as our product offerings change and could have a significant impact due to the difference in the timing of revenue recognition for on-premises licenses versus support and cloud.

Right to exchange. Our multi-year, non-cancellable subscription contracts provide customers with an annual right to exchange software within the original subscription with other software. When it applies to on-premises licenses, we account for this right as a liability. For most contracts, we use the expected value method to determine the liability associated with this right across a portfolio of contracts. Where contracts are outside of the standard portfolio of contracts due to contract size, longer contract duration, or other unique contractual terms, we use the most likely amount method to determine the liability for each individual contract. In both circumstances, the transaction price is constrained based on our estimates, which impacts the amount of revenue recognized. Changes in these estimates could significantly impact revenue for any given period.

Accounting for Income Taxes

As part of the process of preparing our consolidated financial statements, we are required to calculate our income tax expense based on taxable income by jurisdiction. There are many transactions and calculations about which the ultimate tax outcome is uncertain; as a result, our calculations involve estimates by management. Some of these uncertainties arise as a consequence of revenue-sharing, cost-reimbursement and transfer pricing arrangements among related entities and the differing tax treatment of revenue and cost items across various jurisdictions. If tax authorities compelled us to revise or to account differently for our arrangements, that revision could affect our recorded tax liabilities.

The income tax accounting process also involves estimating our actual current tax liability, together with assessing temporary differences resulting from differing treatment of items for tax and accounting purposes. These differences result in deferred tax assets and liabilities, which are included within our consolidated balance sheets. We must then assess the likelihood that our deferred tax assets will be recovered from future taxable income and, to the extent we believe that it is more likely than not that all or a portion of our deferred tax assets will not be realized, we must establish a valuation allowance as a charge to income tax expense.

We have unrecognized tax benefits as of September 30, 2024 of \$65.0 million. Although we believe our tax estimates are appropriate, the final determination of tax audits and any related litigation could result in favorable or unfavorable changes in our estimates. We believe it is reasonably possible that within the next 12 months the amount of unrecognized tax benefits related to the resolution of multi-jurisdictional tax positions could be reduced by up to \$27.0 million as audits close and statutes of limitations expire.

As of September 30, 2024, we have a valuation allowance of \$17.4 million against net deferred tax assets in the U.S. and a valuation allowance of \$4.4 million against net deferred tax assets in certain foreign jurisdictions. The valuation allowance recorded in the U.S. relates to Massachusetts tax credit carryforwards that we do not expect to realize a benefit from prior to expiration.

The valuation allowance recorded against net deferred tax assets of certain foreign jurisdictions is established primarily for our capital loss carryforwards, the majority of which do not expire. However, there are limitations imposed on the utilization of such capital losses that could further restrict the recognition of any tax benefits. We will continue to reassess our valuation allowance requirements each financial reporting period.

Prior to the passage of the U.S. Tax Act, we asserted that substantially all of the undistributed earnings of our foreign subsidiaries were considered indefinitely invested and accordingly, no deferred taxes were provided. Pursuant to the provisions of the U.S. Tax Act, these earnings were subjected to a one-time transition tax and there is therefore no longer a material cumulative basis difference associated with the undistributed earnings. We maintain our assertion to permanently reinvest these earnings outside the U.S. unless repatriation can be done substantially tax-free, with the exception of our Taiwan subsidiary. If we decide to repatriate any additional non-U.S. earnings in the future, we may be required to establish a deferred tax liability on such earnings. The amount of unrecognized deferred tax liability on the undistributed earnings would not be material.

In the normal course of business, PTC and its subsidiaries are examined by various taxing authorities, including the Internal Revenue Service (IRS) in the U.S. We regularly assess the likelihood of additional assessments by tax authorities and provide for these matters as appropriate. We are currently under audit by tax authorities in several jurisdictions. Audits by tax authorities typically involve examination of the deductibility of certain permanent items, transfer pricing, limitations on net operating losses and tax credits. Although we believe our tax estimates are appropriate, the final determination of tax audits and any related litigation could result in material changes in our estimates.

Valuation of Assets and Liabilities Acquired in Business Combinations

In accordance with business combination accounting, we allocate the purchase price of acquired companies to the tangible and intangible assets acquired and liabilities assumed based on their estimated fair values. Determining these fair values requires management to make significant estimates and assumptions, especially with respect to intangible assets.

Our identifiable intangible assets acquired consist of purchased software, trademarks, customer lists and contracts, and software support agreements and related relationships. Purchased software consists of products that have reached technological feasibility and the combination of processes, inventions and trade secrets related to the design and development of acquired products. Customer lists and contracts and software support agreements and related relationships represent the underlying relationships and agreements with customers of the acquired company's installed base. We have generally valued intangible assets using discounted cash flow models. Critical estimates in valuing certain of the intangible assets include but are not limited to:

- future expected revenues and costs related to software license sales, customer support agreements, customer contracts and related customer relationships and acquired developed technologies and trademarks and trade names; and
- discount rates used to determine the present value of estimated future cash flows.

In addition, we estimate the useful lives of our intangible assets based upon the expected period over which we anticipate generating economic benefits from the related intangible asset.

Net tangible assets consist of the fair values of tangible assets less the fair values of assumed liabilities and obligations. Except for deferred revenues, net tangible assets were generally valued by us at the respective carrying amounts recorded by the acquired company, if we believed that their carrying values approximated their fair values at the acquisition date. Deferred revenue for acquisitions reflect the amounts that would have been deferred as of the acquisition date in accordance with ASC 606.

In addition, uncertain tax positions and tax-related valuation allowances assumed in connection with a business combination are initially estimated as of the acquisition date. We reevaluate these items quarterly with any adjustments to our preliminary estimates being recorded to goodwill provided that we are within the measurement period (up to one year from the acquisition date) and we continue to collect information in order to determine their estimated values. Subsequent to the measurement period or our final determination of the estimated value of uncertain tax positions or tax-related valuation allowances, whichever comes first, changes to these uncertain tax positions and tax-related valuation allowances will affect our provision for income taxes in our Consolidated Statements of Operations.

Our estimates of fair value are based upon assumptions believed to be reasonable at that time, but which are inherently uncertain and unpredictable. Assumptions may be incomplete or inaccurate, and unanticipated events and circumstances may occur, which may affect the accuracy or validity of such assumptions, estimates or actual results.

When events or changes in circumstances indicate that the carrying value of a finite-lived intangible asset may not be recoverable, we perform an assessment of the asset for potential impairment. This assessment is based on projected undiscounted future cash flows over the asset's remaining life. If the carrying value of the asset exceeds its undiscounted cash flows, we record an impairment loss equal to the excess of the carrying value over the fair value of the asset, determined using projected discounted future cash flows of the asset.

Recent Accounting Pronouncements

In accordance with recently issued accounting pronouncements, we will be required to comply with certain changes in accounting rules and regulations. Refer to *Note 2. Summary of Significant Accounting Policies*, included in the Notes to Consolidated Financial Statements of this Annual Report, which is incorporated herein by reference, for all recently issued accounting pronouncements, none of which are expected to have a material effect.

Off-Balance Sheet Arrangements

We have not created, and are not party to, any special-purpose or off-balance sheet entities for the purpose of raising capital, incurring debt or operating parts of our business that are not consolidated (to the extent of our ownership interest therein) into our financial statements. We have not entered into any transactions with unconsolidated entities whereby we have subordinated retained interests, derivative instruments or other contingent arrangements that expose us to material continuing risks, contingent liabilities, or any other obligation under a variable interest in an unconsolidated entity that provides financing, liquidity, market risk or credit risk support to us.

ITEM 7A. Quantitative and Qualitative Disclosures about Market Risk

We face exposure to financial market risks, including adverse movements in foreign currency exchange rates and changes in interest rates. These exposures may change over time as business practices evolve and could have a material adverse impact on our financial results.

Foreign currency exchange risk

Our earnings and cash flows are subject to fluctuations due to changes in foreign currency exchange rates. Our most significant foreign currency exposures relate to Eurozone countries, Japan, Sweden, Switzerland, China and India. We enter into foreign currency forward contracts to manage our exposure to fluctuations in foreign exchange rates that arise from receivables and payables denominated in foreign currencies. We do not enter into or hold foreign currency derivative financial instruments for trading or speculative purposes.

Our non-U.S. revenues are generally transacted through our non-U.S. subsidiaries and typically are denominated in their local currency. In addition, expenses that are incurred by our non-U.S. subsidiaries typically are denominated in their local currency. Approximately 50% of our revenue and 35% of our expenses were transacted in currencies other than the U.S. Dollar. Currency translation affects our reported results because we report our results of operations in U.S. Dollars. Historically, our most significant currency risk has been changes in the Euro and Japanese Yen relative to the U.S. Dollar. Based on current revenue and expense levels (excluding restructuring charges and stock-based compensation), a \$0.10 change in the USD to EUR exchange rate and a 10 Yen change in the Yen to USD exchange rate would impact operating income by approximately \$38 million and \$6 million, respectively.

Our exposure to foreign currency exchange rate fluctuations arises in part from intercompany transactions, with most intercompany transactions occurring between a U.S. Dollar functional currency entity and a foreign currency denominated entity. Intercompany transactions typically are denominated in the local currency of the non-U.S. Dollar functional currency subsidiary in order to centralize foreign currency risk. Also, both PTC (the parent company) and our non-U.S. subsidiaries may transact business with our customers and vendors in a currency other than their functional currency (transaction risk). In addition, we are exposed to foreign exchange rate fluctuations as the financial results and balances of our non-U.S. subsidiaries are translated into U.S. Dollars (translation risk). If sales to customers outside the United States increase, our exposure to fluctuations in foreign currency exchange rates will increase.

Our foreign currency risk management strategy is principally designed to mitigate the future potential financial impact of changes in the U.S. Dollar value of balances denominated in foreign currency, resulting from changes in foreign currency exchange rates. Our foreign currency hedging program uses forward contracts to manage the foreign currency exposures that exist as part of our ongoing business operations. The contracts are primarily denominated in the Euro, Swiss Franc, and Swedish Krona currencies, and have maturities of less than four months.

The majority of our foreign currency forward contracts are not designated as hedges for accounting purposes, and changes in the fair value of these instruments are recognized immediately in earnings. Because we enter into these derivative contracts only as an economic hedge, any gains or losses on the underlying foreign-denominated balance are generally offset by the losses or gains on the derivative contract. Gains and losses on these derivatives and foreign currency denominated receivables and payables are included in Other income, net.

As of September 30, 2024 and 2023, we had outstanding forward contracts for derivatives not designated as hedging instruments with notional amounts equivalent to the following:

Currency Hedged (in thousands)	September 30,	
	2024	2023
Euro / U.S. Dollar	\$ 781,398	\$ 383,227
British Pound / U.S. Dollar	24,810	6,058
Israeli Shekel / U.S. Dollar	12,535	11,852
Japanese Yen / U.S. Dollar	42,340	4,770
Swiss Franc / U.S. Dollar	74,939	32,766
Swedish Krona / U.S. Dollar	48,596	35,085
Chinese Renminbi / U.S. Dollar	32,124	16,660
New Taiwan Dollar / U.S. Dollar	16,368	11,855
All other	25,368	21,363
Total	<u>\$ 1,058,478</u>	<u>\$ 523,636</u>

Debt

In addition to the \$1 billion due under our 2025 and 2028 Senior Notes, as of September 30, 2024, we had \$753 million outstanding under our credit facility. Loans under the credit facility bear interest at variable rates which reset every 30 to 180 days depending on the rate and period selected by us. These loans are subject to interest rate risk as interest rates will be adjusted at each rollover date to the extent such amounts are not repaid. As of September 30, 2024, the weighted average annual rate on the credit facility loans was 6.9%. Based on the borrowings outstanding and interest rates in effect as of September 30, 2024, a 100 basis point per annum change in interest rate applied over a one-year period would have an \$8 million impact on annual earnings and cash flows.

Cash and cash equivalents

As of September 30, 2024, cash equivalents were invested in highly liquid investments with maturities of three months or less when purchased. We invest our cash with highly rated financial institutions in North America, Europe and Asia Pacific and in diversified domestic and international money market mutual funds. At September 30, 2024, we had cash and cash equivalents of \$36 million in the United States, \$127 million in Europe, \$86 million in Asia Pacific (including India), and \$17 million in other non-U.S. countries. Given the short maturities and investment grade quality of the portfolio holdings at September 30, 2024, a hypothetical 10% change in interest rates would not materially affect the fair value of our cash and cash equivalents.

Our invested cash is subject to interest rate fluctuations and, for non-U.S. operations, foreign currency exchange rate risk. In a declining interest rate environment, we would experience a decrease in interest income. The opposite holds true in a rising interest rate environment. Over the past several years, the U.S. Federal Reserve Board, European Central Bank and Bank of England have changed certain benchmark interest rates, which has led to declines and increases in market interest rates. These changes in market interest rates have resulted in fluctuations in interest income earned on our cash and cash equivalents. Interest income will continue to fluctuate based on changes in market interest rates and levels of cash available for investment. Changes in foreign currencies relative to the U.S. Dollar had a favorable impact of \$3.2 million and \$2.9 million on our consolidated cash balances in FY'24 and FY'23, respectively. The impact in FY'24 was due in particular to changes in the Brazilian Real, Swedish Krona, Chinese Renminbi, and New Taiwan Dollar.

ITEM 8. Financial Statements and Supplementary Data

The consolidated financial statements and notes to the consolidated financial statements are attached as APPENDIX A.

ITEM 9. Changes in and Disagreements with Accountants on Accounting and Financial Disclosure

None.

ITEM 9A. Controls and Procedures

Evaluation of Disclosure Controls and Procedures

Our management maintains disclosure controls and procedures as defined in Rules 13a-15(e) and 15d-15(e) under the Securities Exchange Act of 1934, as amended (the "Exchange Act") that are designed to provide reasonable assurance that information required to be disclosed in our reports filed or submitted under the Exchange Act is processed, recorded, summarized and reported within the time periods specified in the SEC's rules and forms, and that such information is accumulated and communicated to our management, including our Chief Executive Officer and Chief Financial Officer (our principal executive officer and principal financial officer, respectively), as appropriate, to allow for timely decisions regarding required disclosure.

We evaluated, under the supervision and with the participation of management, including our principal executive and principal financial officers, the effectiveness of the design and operation of our disclosure controls and procedures as of the end of the period covered by this Annual Report. Based on this evaluation, we concluded that our disclosure controls and procedures were effective at the reasonable assurance level as of September 30, 2024.

Management's Annual Report on Internal Control over Financial Reporting

Our management is responsible for establishing and maintaining adequate internal control over financial reporting. Internal control over financial reporting is defined in Rules 13a-15(f) and 15d-15(f) of the Exchange Act as a process designed by, or under the supervision of, our principal executive and principal financial officers and effected by our board of directors, management and other personnel, to provide reasonable assurance regarding the reliability of financial reporting and the preparation of financial statements for external purposes in accordance with generally accepted accounting principles and includes those policies and procedures that:

- Pertain to the maintenance of records that in reasonable detail accurately and fairly reflect the transactions and dispositions of our assets;
- Provide reasonable assurance that transactions are recorded as necessary to permit preparation of financial statements in accordance with generally accepted accounting principles, and that our receipts and expenditures are being made only in accordance with authorizations of our management and directors; and
- Provide reasonable assurance regarding prevention or timely detection of unauthorized acquisition, use or disposition of our assets that could have a material effect on the financial statements.

Because of its inherent limitations, internal control over financial reporting may not prevent or detect misstatements. Projections of any evaluation of effectiveness to future periods are subject to the risk that controls may become inadequate because of changes in conditions, or that the degree of compliance with the policies or procedures may deteriorate.

Our management assessed the effectiveness of our internal control over financial reporting as of September 30, 2024 using the criteria set forth by the Committee of Sponsoring Organizations of the Treadway Commission (COSO) in *Internal Control-Integrated Framework (2013)*. Based on this assessment and those criteria, our management concluded that, as of September 30, 2024, our internal control over financial reporting was effective.

The effectiveness of our internal control over financial reporting as of September 30, 2024 has been audited by PricewaterhouseCoopers LLP, an independent registered public accounting firm, as stated in their report, which appears under Item 8.

Changes in Internal Control over Financial Reporting

There was no change in our internal control over financial reporting that occurred during the quarter ended September 30, 2024 that has materially affected, or is reasonably likely to materially affect, our internal control over financial reporting.

ITEM 9B. Other Information

Amendment to PTC By-Laws

On November 14, 2024, in connection with a periodic review of corporate governance matters and certain recent changes to Securities and Exchange Commission rules and the Massachusetts Business Corporation Act (the "MBCA"), the Board of Directors (the "Board") of PTC approved and adopted an amendment and restatement of the Company's By-Laws (as so amended, the "Amended and Restated By-Laws"), which became effective upon approval. The Amended and Restated By-Laws amend and restate the By-Laws in their entirety to, among other things: (i) permit virtual only meetings of shareholders; (ii) revise the advance notice provisions of the By-Laws to expand the informational and other requirements for shareholder proponents and director nominees in connection with shareholder proposals and shareholder director nominations; (iii) address matters relating to Rule 14a-19 under the Securities Exchange Act of 1934, as amended; (iv) provide processes and procedures for shareholders seeking to call a special meeting of shareholders and obligations and rights of the Board with respect to such requests and the conduct of such meetings; (v) state how abstentions and broker non-votes are treated with respect to the determination of whether a quorum of shareholders exists and of the number of shares voting on a matter; (vi) provide that any shareholder soliciting proxies from other shareholders must use a proxy card color other than white, with the white proxy card being reserved for the exclusive use by the Board; (vii) provide that the Board may adopt such rules, regulations, and procedures as the Board may deem appropriate for the conduct of any meeting of shareholders; (viii) clarify and confirm that the Board, except as otherwise provided by law, and to the extent permitted by law, may limit its exercise of the powers of the corporation pursuant to an agreement approved by the Board; (ix) provide that removal of a director may occur only at a meeting called for the purpose of removing such director, the meeting notice for which must state that the purpose or a purpose of the meeting is the removal of the director; and (x) make various updates throughout to conform to the MBCA and to make ministerial changes, clarifications, and other conforming revisions.

The foregoing description of the Amended and Restated By-Laws does not purport to be complete and is qualified by reference to the full Amended and Restated By-Laws, a copy of which is filed as Exhibit 3.2 to this Form 10-K and incorporated herein by reference.

Director and Executive Officer Adoption, Modification or Termination of 10b5-1 Plans in Q4'24

Our Section 16 officers and directors may enter into plans or arrangements for the purchase or sale of our securities that are intended to satisfy the affirmative defense conditions of Rule 10b5-1(c) of the Exchange Act. Such plans and arrangements must comply in all respects with our insider trading policies, including our policy governing entry into and operation of 10b5-1 plans and arrangements.

During the quarter ended September 30, 2024, the following Section 16 officers adopted Rule 10b5-1 trading arrangements (as defined in Item 408 of Regulation S-K of the Exchange Act). All plans adopted covered only sales of PTC common stock. No plans were modified or terminated.

Name and Title of Director or Section 16 Officer	Date of Adoption, Modification, or Termination	Duration of the Plan	Aggregate Number of Shares of Common Stock that may be Sold under the Plan
Kristian Talvitie Executive Vice President, Chief Financial Officer	Adopted August 2, 2024	Ends February 2, 2025	15,050, plus all net vested shares issued for the FY2024 Corporate Incentive Plan, plus all net vested shares that vest on November 15, 2024 under performance-based RSU awards granted on November 17, 2021, November 16, 2022, and November 15, 2023 ⁽¹⁾⁽²⁾
Catherine Kniker, Executive Vice President, Chief Strategy, Marketing, and Sustainability Officer	Adopted August 12, 2024	Ends August 8, 2025	6,580, plus all net vested shares issued for the FY2024 Corporate Incentive Plan, plus 15% of all net vested shares that vest on November 15, 2024 under performance-based RSU awards granted on November 17, 2021, November 16, 2022, and November 15, 2023, plus all shares purchased under the 2016 Employee Stock Purchase Plan for the offering periods ending on January 31, 2025 and July 31, 2025 ⁽¹⁾⁽²⁾⁽³⁾
Aaron von Staats Executive Vice President, General Counsel	Adopted August 8, 2024	Ends August 15, 2025	8,618, plus all net vested shares issued for the FY2024 Corporate Incentive Plan, plus 10% of total shares that vest on November 15, 2024 under performance-based RSU awards granted on November 17, 2021, November 16, 2022, and November 15, 2023, plus 80% of all net vested shares that vest on November 15, 2024 under performance-based RSU awards granted on November 17, 2021, November 16, 2022, and November 15, 2023 ⁽¹⁾⁽²⁾

- (1) The total number of shares that would be issued for the FY2024 Corporate Incentive Plan could not be known when the plan was adopted as the FY2024 performance period had not yet ended and attainment of the performance measure was not known.
- (2) The total number of shares that would be earned and vested under the performance-based RSU awards for the FY2024 performance period could not be known when the plan was adopted as the FY2024 performance period had not yet ended and attainment of the performance measures was not known.
- (3) The total number of shares that will be purchased under the 2016 Employee Stock Purchase Plan for the offering periods ending January 31, 2025 and July 31, 2025 could not be known when the plan was adopted.

ITEM 9C. Disclosure Regarding Foreign Jurisdictions that Prevent Inspections

Not applicable.

PART III

ITEM 10. Directors, Executive Officers and Corporate Governance

The information required by this item not set forth below may be found under the headings "Corporate Governance and the Board of Directors," "Insider Trading Policies and Procedures," "Our Executive Officers," "Delinquent Section 16(a) Reports," and "Transactions with Related Persons" appearing in our 2025 Proxy Statement. Such information is incorporated herein by reference.

Code of Ethics for Senior Executive Officers

We have adopted a Code of Ethics for Senior Executive Officers that applies to our President and Chief Executive Officer, Chief Financial Officer, and Chief Accounting Officer, as well as others. The Code is embedded in our Code of Business Conduct and Ethics applicable to all employees. A copy of the Code of Business Conduct and Ethics is publicly available on our website at www.ptc.com. If we make any substantive amendments to, or grant any waiver from, including any implicit waiver, the Code of Ethics for Senior Executive Officers to or for our President and Chief Executive Officer, Chief Financial Officer or Chief Accounting Officer, we will disclose the nature of such amendment or waiver in a current report on Form 8-K.

Changes to Shareholder Director Nomination Procedures

As described in Item 9B of this Annual Report, our By-Laws were amended and restated on November 14, 2024 to, among other things, revise the advance notice provisions of the By-Laws to expand the informational and other requirements for shareholder proponents and director nominees in connection with shareholder director nominations. Those provisions are set forth in Section 2.3 of the Amended and Restated By-Laws filed as Exhibit 3.2 to this Annual Report and incorporated herein by reference.

ITEM 11. Executive Compensation

Information with respect to director and executive compensation may be found under the headings "Director Compensation," "Compensation Discussion and Analysis," "Compensation Tables," "Compensation Committee Report," and "Pay Ratio Disclosure" appearing in our 2025 Proxy Statement. Such information is incorporated herein by reference.

ITEM 12. Security Ownership of Certain Beneficial Owners and Management and Related Stockholder Matters

Information about our common stock ownership may be found under the heading "Information about PTC Common Stock Ownership" appearing in our 2025 Proxy Statement. Such information is incorporated herein by reference.

EQUITY COMPENSATION PLAN INFORMATION as of September 30, 2024

Plan Category	Number of securities to be issued upon exercise of outstanding options, warrants and rights	Weighted-average exercise price of outstanding options, warrants and rights	Number of securities remaining available for future issuance under equity compensation plans
Equity compensation plans approved by security holders:			
2000 Equity Incentive Plan ⁽¹⁾	2,061,934	—	6,064,590
2016 Employee Stock Purchase Plan ⁽²⁾	—	—	2,036,133
Total	<u>2,061,934</u>	<u>—</u>	<u>8,100,723</u>

(1) All of the shares issuable upon vesting are restricted stock units, which have no exercise price.

(2) This amount represents the total number of shares remaining available under the 2016 Employee Stock Purchase Plan, of which 90,333 shares are subject to purchase during the current offering period.

ITEM 13. Certain Relationships and Related Transactions, and Director Independence

Information with respect to this item may be found under the headings "Independence of Our Directors," "Review of Transactions with Related Persons" and "Transactions with Related Persons" appearing in our 2025 Proxy Statement. Such information is incorporated herein by reference.

ITEM 14. Principal Accounting Fees and Services

Information with respect to this item may be found under the headings "Engagement of Independent Auditor and Approval of Professional Services and Fees" and "PricewaterhouseCoopers LLP Professional Services and Fees" in our 2025 Proxy Statement. Such information is incorporated herein by reference.

PART IV

ITEM 15. Exhibits and Financial Statement Schedules

(a) Documents Filed as Part of Form 10-K

1. Financial Statements

Report of Independent Registered Public Accounting Firm (PricewaterhouseCoopers LLP, Boston, MA, PCAOB ID: 238)

F-1

Consolidated Balance Sheets as of September 30, 2024 and 2023

F-4

Consolidated Statements of Operations for the years ended September 30, 2024, 2023 and 2022

F-5

Consolidated Statements of Comprehensive Income for the years ended September 30, 2024, 2023 and 2022

F-6

Consolidated Statements of Cash Flows for the years ended September 30, 2024, 2023 and 2022

F-7

Consolidated Statements of Stockholders' Equity for the years ended September 30, 2024, 2023 and 2022

F-8

Notes to Consolidated Financial Statements

F-9

2. Financial Statement Schedules

Schedules have been omitted since they are either not required, not applicable, or the information is otherwise included in the Financial Statements per Item 15(a)1 above.

3. Exhibits

The list of exhibits in the Exhibit Index is incorporated herein by reference.

(b) Exhibits

We hereby file the exhibits listed in the attached Exhibit Index.

(c) Financial Statement Schedules

None.

ITEM 16. Form 10-K Summary

None.

EXHIBIT INDEX

Exhibit Number	Description	Filed Herewith	Incorporated by Reference			SEC File No.
			Form	Filing Date	Exhibit	
3.1	Restated Articles of Organization of PTC Inc.		10-K	November 23, 2015	3.1	0-18059
3.2	Amended and Restated By-Laws of PTC Inc.	X				
4.1	Indenture, dated as of February 13, 2020, between PTC Inc. and Wells Fargo Bank, National Association, as trustee		8-K	February 13, 2020	4.1	0-18059
4.2	Form of 3.625% senior unsecured notes due 2025		8-K	February 13, 2020	4.2	0-18059
4.3	Form of 4.000% senior unsecured notes due 2028		8-K	February 13, 2020	4.3	0-18059
4.4	Description of Securities Registered under Section 12 of the Securities Exchange Act of 1934		10-K	November 18, 2019	4.4	0-18059
10.1*	2000 Equity Incentive Plan		8-K	February 21, 2023	10.1	0-18059
10.1-1*	Form of Restricted Stock Unit Certificate (Non-Employee Director)	X				
10.1-2*	Form of Restricted Stock Unit Certificate (U.S.)		10-K	November 18, 2016	10.1.11	0-18059
10.1-3*	Form of Restricted Stock Unit Certificate (U.S. EVP)	X				
10.1-4*	Form of Restricted Stock Unit Certificate (U.S. Section 16)	X				
10.1-5*	Form of Restricted Stock Unit Certificate (U.S.)		10-K	November 20, 2023	10.1.12	0-18059
10.1-6*	Form of Restricted Stock Unit Certificate (U.S. Section 16 and U.S. EVP)		10-K	November 20, 2023	10.1.13	0-18059
10.1-8*	Form of Restricted Stock Unit Certificate (Non-U.S.)	X				
10.1-9*	Form of Restricted Stock Unit Certificate (Israel)	X				
10.2*	2016 Employee Stock Purchase Plan		8-K	February 21, 2023	10.2	0-18059
10.3-1*	Executive Agreement by and between the Company and James Heppelmann dated September 30, 2020		8-K	October 6, 2020	10.1	0-18059
10.3-2*	Amendment No. 1 to Executive Agreement by and between the Company and James Heppelmann dated February 16, 2023		8-K	February 21, 2023	10.3	0-18059
10.4-1*	Offer Letter dated July 24, 2023 by and between the Company and Neil Barua		8-K	July 26, 2023	10.1	0-18059
10.4-2*	Executive Agreement between the Company and Neil Barua dated July 24, 2023		8-K	July 26, 2023	10.2	0-18059
10.5*	Form of Executive Agreement dated November 16, 2023 by and between PTC Inc. and each of Kristian Talvitie, Catherine Kniker, and Aaron von Staats		10-K	November 20, 2023	10.5	0-18059
10.6*	Executive Agreement dated November 16, 2023 by and between Michael DiTullio and PTC Inc.		10-K	November 20, 2023	10.6	0-18059
10.10	Office Lease Agreement dated as of September 7, 2017 by and between PTC Inc. and SCD L2 Seaport Square LLC		8-K	September 7, 2017	10	0-18059
10.11	First Amendment to Lease dated as of October 5, 2017 by and between PTC Inc. and SCD L2 Seaport Square LLC		8-K	November 29, 2017	10.23	0-18059
10.16	Fourth Amended and Restated Credit Agreement dated January 3, 2023 by and among PTC, PTC (IFSC) Limited, JPMorgan Chase Bank, N.A., as administrative agent, and the Lenders named therein		8-K	January 3, 2023	4.4	0-18059

10.17	Amendment No. 1 dated October 1, 2024 to the Fourth Amended and Restated Credit Agreement dated January 3, 2023 by and among PTC, PTC (IFSC) Limited, JPMorgan Chase Bank, N.A., as administrative agent, and the Lenders named therein	8-K	October 7, 2024	10.1	0-18059
19.1	Trading in Company Securities Policy	X			
19.2	Rule 10b5-1 Plan Policy	X			
21.1	Subsidiaries of PTC Inc.	X			
23.1	Consent of PricewaterhouseCoopers LLP, an independent registered public accounting firm	X			
31.1	Certification of the Chief Executive Officer Pursuant to Exchange Act Rules 13(a)-14(a) and 15d-14(a)	X			
31.2	Certification of the Chief Financial Officer Pursuant to Exchange Act Rules 13(a)-14(a) and 15d-14(a)	X			
32**	Certification of Periodic Financial Report Pursuant to 18 U.S.C. Section 1350	X			
97.1	Executive Compensation Recoupment Policy	X			
101.INS	Inline XBRL Instance Document – the instance document does not appear in the interactive data file because its XBRL tags are embedded within the inline XBRL document				
101.SCH	Inline XBRL Taxonomy Extension Schema with Embedded Linkbase Documents				
104	The cover page of the Annual Report on Form 10-K formatted in Inline XBRL (included in Exhibit 101)				

* Identifies a management contract or compensatory plan or arrangement in which an executive officer or director of PTC participates.

** Indicates that the exhibit is being furnished with this report and is not filed as a part of it.

SIGNATURES

Pursuant to the requirements of Section 13 or 15(d) of the Securities Exchange Act of 1934, the Registrant has duly caused this report to be signed on its behalf by the undersigned, thereunto duly authorized on the 14th day of November, 2024.

PTC Inc.

By:

/s/ NEIL BARUA

Neil Barua

President and Chief Executive Officer

Pursuant to the requirements of the Securities Exchange Act of 1934, this report has been signed below by the following persons on behalf of the Registrant and in the capacities indicated below, on the 14th day of November, 2024.

<u>Signature</u>	<u>Title</u>
(i) Principal Executive Officer: <u>/s/ NEIL BARUA</u> Neil Barua	President and Chief Executive Officer
(ii) Principal Financial Officer: <u>/s/ KRISTIAN TALVITIE</u> Kristian Talvitie	Executive Vice President and Chief Financial Officer
(iii) Principal Accounting Officer: <u>/s/ ALICE CHRISTENSON</u> Alice Christenson	Chief Accounting Officer
(iv) Board of Directors:	
<u>/s/ JANICE CHAFFIN</u> Janice Chaffin	Chair of the Board
<u>/s/ NEIL BARUA</u> Neil Barua	President and Chief Executive Officer
<u>/s/ MARK BENJAMIN</u> Mark Benjamin	Director
<u>/s/ ROB BERNSHTEYN</u> Rob Bernshteyn	Director
<u>/s/ AMAR HANSPAL</u> Amar Hanspal	Director
<u>/s/ MICHAL KATZ</u> Michal Katz	Director
<u>/s/ PAUL LACY</u> Paul Lacy	Director
<u>/s/ CORINNA LATHAN</u> Corinna Lathan	Director
<u>/s/ JANESH MOORJANI</u> Janesh Moorjani	Director
<u>/s/ ROBERT SCHECHTER</u> Robert Schechter	Director

(This page has been left blank intentionally.)

APPENDIX A

Report of Independent Registered Public Accounting Firm

To the Board of Directors and Stockholders of PTC Inc.

Opinions on the Financial Statements and Internal Control over Financial Reporting

We have audited the accompanying consolidated balance sheets of PTC Inc. and its subsidiaries (the "Company") as of September 30, 2024 and 2023, and the related consolidated statements of operations, of comprehensive income, of stockholders' equity and of cash flows for each of the three years in the period ended September 30, 2024, including the related notes (collectively referred to as the "consolidated financial statements"). We also have audited the Company's internal control over financial reporting as of September 30, 2024, based on criteria established in *Internal Control - Integrated Framework* (2013) issued by the Committee of Sponsoring Organizations of the Treadway Commission (COSO).

In our opinion, the consolidated financial statements referred to above present fairly, in all material respects, the financial position of the Company as of September 30, 2024 and 2023, and the results of its operations and its cash flows for each of the three years in the period ended September 30, 2024 in conformity with accounting principles generally accepted in the United States of America. Also in our opinion, the Company maintained, in all material respects, effective internal control over financial reporting as of September 30, 2024, based on criteria established in *Internal Control - Integrated Framework* (2013) issued by the COSO.

Basis for Opinions

The Company's management is responsible for these consolidated financial statements, for maintaining effective internal control over financial reporting, and for its assessment of the effectiveness of internal control over financial reporting, included in Management's Annual Report on Internal Control over Financial Reporting appearing under Item 9A. Our responsibility is to express opinions on the Company's consolidated financial statements and on the Company's internal control over financial reporting based on our audits. We are a public accounting firm registered with the Public Company Accounting Oversight Board (United States) (PCAOB) and are required to be independent with respect to the Company in accordance with the U.S. federal securities laws and the applicable rules and regulations of the Securities and Exchange Commission and the PCAOB.

We conducted our audits in accordance with the standards of the PCAOB. Those standards require that we plan and perform the audits to obtain reasonable assurance about whether the consolidated financial statements are free of material misstatement, whether due to error or fraud, and whether effective internal control over financial reporting was maintained in all material respects.

Our audits of the consolidated financial statements included performing procedures to assess the risks of material misstatement of the consolidated financial statements, whether due to error or fraud, and performing procedures that respond to those risks. Such procedures included examining, on a test basis, evidence regarding the amounts and disclosures in the consolidated financial statements. Our audits also included evaluating the accounting principles used and significant estimates made by management, as well as evaluating the overall presentation of the consolidated financial statements. Our audit of internal control over financial reporting included obtaining an understanding of internal control over financial reporting, assessing the risk that a material weakness exists, and testing and evaluating the design and operating effectiveness of internal control based on the assessed risk. Our audits also included performing such other procedures as we considered necessary in the circumstances. We believe that our audits provide a reasonable basis for our opinions.

Definition and Limitations of Internal Control over Financial Reporting

A company's internal control over financial reporting is a process designed to provide reasonable assurance regarding the reliability of financial reporting and the preparation of financial statements for external purposes in accordance with generally accepted accounting principles. A company's internal control over financial reporting includes those policies and procedures that (i) pertain to the maintenance of records that, in reasonable detail, accurately and fairly reflect the transactions and dispositions of the assets of the company; (ii) provide reasonable assurance that transactions are recorded as necessary to permit preparation of financial statements in accordance with generally accepted accounting principles, and that receipts and expenditures of the company are being made only in accordance with authorizations of management and directors of the company; and (iii) provide reasonable assurance regarding prevention or timely detection of unauthorized acquisition, use, or disposition of the company's assets that could have a material effect on the financial statements.

Because of its inherent limitations, internal control over financial reporting may not prevent or detect misstatements. Also, projections of any evaluation of effectiveness to future periods are subject to the risk that controls may become inadequate because of changes in conditions, or that the degree of compliance with the policies or procedures may deteriorate.

Critical Audit Matters

The critical audit matter communicated below is a matter arising from the current period audit of the consolidated financial statements that was communicated or required to be communicated to the audit committee and that (i) relates to accounts or disclosures that are material to the consolidated financial statements and (ii) involved our especially challenging, subjective, or complex judgments. The communication of critical audit matters does not alter in any way our opinion on the consolidated financial statements, taken as a whole, and we are not, by communicating the critical audit matter below, providing a separate opinion on the critical audit matter or on the accounts or disclosures to which it relates.

Revenue Recognition - Identification of Distinct Performance Obligations

As described in Note 2 to the consolidated financial statements, the Company's sources of revenue include: (1) subscriptions, (2) perpetual licenses, (3) support for perpetual licenses and (4) professional services. Revenue is derived from the licensing of computer software products, cloud-based offerings, and related support and professional services contracts. During the year ended September 30, 2024, the Company recognized revenue from contracts with customers of \$2,298 million. The Company's contracts with customers for subscriptions typically include commitments to transfer term-based, on-premises software licenses bundled with support and/or cloud services. On-premises software is determined to be a distinct performance obligation from support. As disclosed by management, significant judgment is used in determining the performance obligations related to these bundled products and services. The corresponding revenues are recognized as the related performance obligations are satisfied.

The principal considerations for our determination that performing procedures relating to revenue recognition - identification of distinct performance obligations, is a critical audit matter are the (i) significant judgment by management when identifying the distinct performance obligations, and (ii) a high degree of auditor judgment, subjectivity, and effort in performing procedures and evaluating audit evidence related to management's identification of distinct performance obligations within contracts with customers.

Addressing the matter involved performing procedures and evaluating audit evidence in connection with forming our overall opinion on the consolidated financial statements. These procedures included testing the effectiveness of controls relating to the revenue recognition process, including controls over the identification of distinct performance obligations. These procedures also included, among others (i) evaluating the Company's revenue recognition accounting policy and (ii) testing management's identification of distinct performance obligations in its contracts with customers by examining revenue contracts on a sample basis and evaluating whether these performance obligations are satisfied at a point in time or satisfied over time.

/s/ PricewaterhouseCoopers LLP

Boston, Massachusetts

November 14, 2024

We have served as the Company's auditor since 1992.

PTC Inc.
CONSOLIDATED BALANCE SHEETS
(in thousands, except per share data)

	September 30,	
	2024	2023
ASSETS		
Current assets:		
Cash and cash equivalents	\$ 265,808	\$ 288,103
Accounts receivable, net of allowance for doubtful accounts of \$1,180 and \$429 at September 30, 2024 and September 30, 2023, respectively	861,953	811,398
Prepaid expenses	102,931	96,016
Other current assets	68,013	81,849
Total current assets	1,298,705	1,277,366
Property and equipment, net	75,187	88,391
Goodwill	3,461,891	3,358,511
Acquired intangible assets, net	897,476	941,249
Deferred tax assets	159,404	123,319
Operating right-of-use lease assets	133,317	143,028
Other assets	357,562	356,978
Total assets	\$ 6,383,542	\$ 6,288,842
LIABILITIES AND STOCKHOLDERS' EQUITY		
Current liabilities:		
Accounts payable	\$ 24,198	\$ 43,480
Accrued expenses and other current liabilities	129,528	132,841
Accrued compensation and benefits	173,797	160,431
Accrued income taxes	39,978	14,919
Current portion of long-term debt	521,467	9,375
Deferred acquisition payments	—	620,040
Deferred revenue	754,039	665,362
Short-term lease obligations	24,186	24,737
Total current liabilities	1,667,193	1,671,185
Long-term debt	1,227,105	1,686,410
Deferred tax liabilities	32,216	29,508
Long-term deferred revenue	21,235	16,188
Long-term lease obligations	157,568	168,455
Other liabilities	63,827	39,806
Total liabilities	3,169,144	3,611,552
Commitments and contingencies (Note 10)		
Stockholders' equity:		
Preferred stock, \$0.01 par value; 5,000 shares authorized; none issued	—	—
Common stock, \$0.01 par value; 500,000 shares authorized; 120,155 and 118,846 shares issued and outstanding at September 30, 2024 and September 30, 2023, respectively	1,202	1,188
Additional paid-in capital	1,965,307	1,820,905
Retained earnings	1,349,610	973,277
Accumulated other comprehensive loss	(101,721)	(118,080)
Total stockholders' equity	3,214,398	2,677,290
Total liabilities and stockholders' equity	\$ 6,383,542	\$ 6,288,842

The accompanying notes are an integral part of these consolidated financial statements.

PTC Inc.
CONSOLIDATED STATEMENTS OF OPERATIONS
(in thousands, except per share data)

	Year ended September 30,		
	2024	2023	2022
Revenue:			
License	\$ 806,871	\$ 747,022	\$ 782,680
Support and cloud services	1,359,355	1,199,536	987,573
Total software revenue	2,166,226	1,946,558	1,770,253
Professional services	132,246	150,495	163,094
Total revenue	2,298,472	2,097,053	1,933,347
Cost of revenue:			
Cost of license revenue	46,850	53,200	49,240
Cost of support and cloud services revenue	274,599	245,027	184,789
Total cost of software revenue	321,449	298,227	234,029
Cost of professional services revenue	123,367	142,779	151,951
Total cost of revenue	444,816	441,006	385,980
Gross margin	1,853,656	1,656,047	1,547,367
Operating expenses:			
Sales and marketing	558,954	530,125	485,247
Research and development	433,047	394,370	338,822
General and administrative	232,377	233,516	204,732
Amortization of acquired intangible assets	42,018	40,022	34,970
Restructuring and other charges (credits), net	(802)	(460)	36,234
Total operating expenses	1,265,594	1,197,573	1,100,005
Operating income	588,062	458,474	447,362
Interest expense	(119,653)	(129,417)	(54,268)
Other income, net	553	3,509	4,004
Income before income taxes	468,962	332,566	397,098
Provision for income taxes	92,629	87,026	84,017
Net income	\$ 376,333	\$ 245,540	\$ 313,081
Earnings per share—Basic	\$ 3.14	\$ 2.07	\$ 2.67
Earnings per share—Diluted	\$ 3.12	\$ 2.06	\$ 2.65
Weighted-average shares outstanding—Basic	119,679	118,341	117,194
Weighted-average shares outstanding—Diluted	120,742	119,334	118,233

The accompanying notes are an integral part of these consolidated financial statements.

PTC Inc.
CONSOLIDATED STATEMENTS OF COMPREHENSIVE INCOME
(in thousands)

	Year ended September 30,		
	2024	2023	2022
Net income	\$ 376,333	\$ 245,540	\$ 313,081
Other comprehensive income (loss), net of tax:			
Hedge gain (loss) arising during the period, net of tax of \$5.3 million, \$2.5 million, and \$(5.8) million in 2024, 2023, and 2022, respectively	(16,315)	(7,516)	17,556
Foreign currency translation adjustment, net of tax of \$0 for each period	36,465	45,692	(92,768)
Change in pension benefit, net of tax of \$1.7 million, \$1.3 million, and \$(7.1) million in 2024, 2023, and 2022, respectively	(3,791)	(2,798)	17,618
Other comprehensive income (loss)	16,359	35,378	(57,594)
Comprehensive income	<u>\$ 392,692</u>	<u>\$ 280,918</u>	<u>\$ 255,487</u>

The accompanying notes are an integral part of these consolidated financial statements.

PTC Inc.
CONSOLIDATED STATEMENTS OF CASH FLOWS
(in thousands)

	Year ended September 30,		
	2024	2023	2022
Cash flows from operating activities:			
Net income	\$ 376,333	\$ 245,540	\$ 313,081
Adjustments to reconcile net income to net cash provided by operating activities:			
Depreciation and amortization	108,119	104,760	87,694
Amortization of right-of-use lease assets	33,288	32,402	34,346
Stock-based compensation	223,461	206,459	174,863
Loss on investment	—	—	31,854
Gain on divestiture of business	—	—	(29,808)
Other non-cash items, net	(1,625)	(4,065)	(4,560)
Provision (benefit) from deferred income taxes	(39,040)	16,676	42,963
Changes in operating assets and liabilities, excluding the effects of acquisitions:			
Accounts receivable	(34,629)	(98,607)	(165,006)
Accounts payable and accrued expenses	(24,368)	15,918	6,957
Accrued compensation and benefits	8,404	7,845	(6,645)
Deferred revenue	81,399	56,572	57,586
Accrued income taxes	65,006	4,639	(15,329)
Other current assets and prepaid expenses	(16,137)	6,974	(40,643)
Operating lease liabilities	(13,245)	(1,929)	(13,610)
Other noncurrent assets and liabilities	(16,982)	17,677	(38,417)
Net cash provided by operating activities	749,984	610,861	435,326
Cash flows from investing activities:			
Additions to property and equipment	(14,378)	(23,814)	(19,496)
Acquisitions of businesses, net of cash acquired	(93,457)	(828,271)	(282,943)
Proceeds from sale of investments	—	349	46,906
Purchases of investments	—	(5,823)	—
Purchase of intangible assets	(3,990)	(800)	(6,451)
Settlement of net investment hedges	(13,078)	(7,602)	24,857
Divestitures of businesses and assets, net	—	(154)	32,518
Other investing activities	89	—	3,408
Net cash used in investing activities	(124,814)	(866,115)	(201,201)
Cash flows from financing activities:			
Borrowings under credit facility	1,084,845	1,540,000	264,000
Repayments of borrowings under credit facility and acquired debt	(1,038,921)	(1,197,000)	(355,000)
Repurchases of common stock	—	—	(125,000)
Proceeds from issuance of common stock	25,674	21,652	21,207
Payments of withholding taxes in connection with stock-based awards	(102,001)	(82,448)	(68,991)
Payments of principal for financing leases	(82)	(536)	(297)
Credit facility origination costs	—	(13,355)	—
Payment of deferred acquisition consideration	(620,040)	—	—
Other financing activity	(200)	—	—
Net cash provided by (used in) financing activities	(650,725)	268,313	(264,081)
Effect of exchange rate changes on cash, cash equivalents, and restricted cash	3,223	2,851	(24,203)
Net change in cash, cash equivalents, and restricted cash	(22,332)	15,910	(54,159)
Cash, cash equivalents, and restricted cash, beginning of period	288,798	272,888	327,047
Cash, cash equivalents, and restricted cash, end of period	<u>\$ 266,466</u>	<u>\$ 288,798</u>	<u>\$ 272,888</u>

The accompanying notes are an integral part of these consolidated financial statements.

PTC Inc.
CONSOLIDATED STATEMENTS OF STOCKHOLDERS' EQUITY
(in thousands)

	Common Stock		Additional		Accumulated	Total
	Shares	Amount	Paid-In	Retained	Other	Stockholders'
			Capital	Earnings	Comprehensive	Equity
					Loss	
Balance as of September 30, 2021	117,163	\$ 1,172	\$1,718,504	\$ 414,656	\$ (95,864)	\$ 2,038,468
Common stock issued for employee stock-based awards	1,737	18	(18)	—	—	—
Shares surrendered by employees to pay taxes related to stock-based awards	(597)	(6)	(68,985)	—	—	(68,991)
Common stock issued for employee stock purchase plan	215	2	21,205	—	—	21,207
Compensation expense from stock-based awards	—	—	174,863	—	—	174,863
Net income	—	—	—	313,081	—	313,081
Repurchases of common stock	(1,046)	(11)	(124,989)	—	—	(125,000)
Gain on net investment hedges, net of tax	—	—	—	—	17,556	17,556
Foreign currency translation adjustment	—	—	—	—	(92,768)	(92,768)
Change in defined benefit pension items, net of tax	—	—	—	—	17,618	17,618
Balance as of September 30, 2022	117,472	\$ 1,175	\$1,720,580	\$ 727,737	\$ (153,458)	\$ 2,296,034
Common stock issued for employee stock-based awards	1,798	18	(18)	—	—	—
Shares surrendered by employees to pay taxes related to stock-based awards	(620)	(7)	(82,761)	—	—	(82,768)
Common stock issued for employee stock purchase plan	196	2	21,650	—	—	21,652
Compensation expense from stock-based awards	—	—	161,454	—	—	161,454
Net income	—	—	—	245,540	—	245,540
Loss on net investment hedges, net of tax	—	—	—	—	(7,516)	(7,516)
Foreign currency translation adjustment	—	—	—	—	45,692	45,692
Change in defined benefit pension items, net of tax	—	—	—	—	(2,798)	(2,798)
Balance as of September 30, 2023	118,846	\$ 1,188	\$1,820,905	\$ 973,277	\$ (118,080)	\$ 2,677,290
Common stock issued for employee stock-based awards	1,733	18	(18)	—	—	—
Shares surrendered by employees to pay taxes related to stock-based awards	(612)	(6)	(101,918)	—	—	(101,924)
Common stock issued for employee stock purchase plan	188	2	25,672	—	—	25,674
Compensation expense from stock-based awards	—	—	220,666	—	—	220,666
Net income	—	—	—	376,333	—	376,333
Loss on net investment hedges, net of tax	—	—	—	—	(16,315)	(16,315)
Foreign currency translation adjustment	—	—	—	—	36,465	36,465
Change in defined benefit pension items, net of tax	—	—	—	—	(3,791)	(3,791)
Balance as of September 30, 2024	120,155	\$ 1,202	\$1,965,307	\$1,349,610	\$ (101,721)	\$ 3,214,398

The accompanying notes are an integral part of these consolidated financial statements.

PTC Inc.
NOTES TO CONSOLIDATED FINANCIAL STATEMENTS

1. Description of Business and Basis of Presentation

Business

PTC Inc. was incorporated in 1985 and is headquartered in Boston, Massachusetts. PTC is a global software company that provides a portfolio of innovative digital solutions that work together to transform how physical products are engineered, manufactured, and serviced.

Basis of Presentation

Our fiscal year-end is September 30. The consolidated financial statements include PTC Inc. (the parent company) and its wholly-owned subsidiaries, including those operating outside the United States. All intercompany balances and transactions have been eliminated in the consolidated financial statements.

We prepare our financial statements under generally accepted accounting principles in the United States that require management to make estimates and assumptions that affect the amounts reported and the related disclosures. Actual results could differ from these estimates.

2. Summary of Significant Accounting Policies

Foreign Currency Translation

For our non-U.S. operations where the functional currency is the local currency, we translate assets and liabilities at exchange rates in effect at the balance sheet date and record translation adjustments in stockholders' equity. For our non-U.S. operations where the U.S. Dollar is the functional currency, we remeasure monetary assets and liabilities using exchange rates in effect at the balance sheet date and non-monetary assets and liabilities at historical rates and record resulting exchange gains or losses in Other income, net in the Consolidated Statements of Operations. We translate income statement amounts at average rates for the period. Transaction gains and losses are recorded in Other income, net in the Consolidated Statements of Operations.

Revenue Recognition

Nature of Products and Services

Our sources of revenue include: (1) subscriptions, (2) perpetual licenses, (3) support for perpetual licenses and (4) professional services. Subscriptions include term-based on-premises licenses and related support, Software-as-a-Service (SaaS), and hosting services. Revenue is derived from the licensing of computer software products, cloud-based offerings, and related support and professional services contracts. In accordance with ASC 606, *Revenue from Contracts with Customers*, revenue is recognized when a customer obtains control of promised products or services. The amount of revenue recognized reflects the consideration that we expect to be entitled to receive in exchange for these products or services. To achieve the core principle of this standard, we apply the following five steps:

- (1) identify the contract with the customer,
- (2) identify the performance obligations in the contract,
- (3) determine the transaction price,
- (4) allocate the transaction price to performance obligations in the contract, and
- (5) recognize revenue when or as we satisfy a performance obligation.

We enter into contracts that include combinations of licenses, support, cloud-based offerings, and professional services, each of which are accounted for as separate performance obligations with differing revenue recognition patterns referenced below.

Performance Obligation	When Performance Obligation is Typically Satisfied
Term-based subscriptions	
On-premises software licenses	Point in Time: Upon the later of when the software is made available or the subscription term commences
Support and cloud-based offerings (including SaaS)	Over Time: Ratably over the contractual term; commencing upon the later of when the software is made available or the subscription term commences
Perpetual software licenses	Point in Time: When the software is made available
Support for perpetual software licenses	Over Time: Ratably over the contractual term
Professional services	Over Time: As services are provided

Judgments and Estimates

Our contracts with customers for subscriptions typically include commitments to transfer term-based, on-premises software licenses bundled with support and/or cloud services. Significant judgment is used in determining the performance obligations related to these bundled products and services. On-premises software is determined to be a distinct performance obligation from support which is sold for the same term of the subscription. For subscription arrangements which include cloud services and on-premises licenses, we assess whether the cloud component is highly interrelated with the on-premises term-based software licenses. Other than a limited population of subscriptions, the cloud component is not currently deemed to be interrelated with the on-premises term software and, as a result, cloud services are accounted for as a distinct performance obligation from the software and support components of the subscription.

Judgment is required to allocate the transaction price to each performance obligation. We use the estimated standalone selling price method to allocate the transaction price for items that are not sold separately. The estimated standalone selling price is determined using all information reasonably available to us, including market conditions and other observable inputs. The corresponding revenues are recognized as the related performance obligations are satisfied. Where subscriptions include on-premises software and support only, we determined that approximately 55% of the estimated standalone selling price for subscriptions is attributable to software licenses and approximately 45% is attributable to support for those licenses. Some of our subscription offerings include a combination of on-premises and cloud-based technology. In such cases, the cloud-based technology is generally considered distinct and receives an allocation of approximately 5% to 50% of the estimated standalone selling price of the subscription. The amounts allocated to cloud are based on assessment of the relative value of the cloud functionality in the subscription, with the remaining amounts allocated between software and support.

Our multi-year, non-cancellable subscription contracts provide customers with an annual right to exchange software within the subscription with other software. Although the exchange right is limited to software products within a similar product grouping, the exchange right is not limited to products with substantially similar features and functionality as those originally delivered. We determined that, for on-premises licenses, this right to exchange previously delivered software for different software represents variable consideration to be accounted for as a liability. We have identified a standard portfolio of contracts with common characteristics and applied the expected value method of determining variable consideration associated with this right. Additionally, in isolated situations that are outside of the standard portfolio of contracts due to contract size, longer contract duration, or other unique contractual terms, we use the most likely amount method to determine the amount of variable consideration. In both circumstances, the variable consideration included in the transaction price is constrained to the extent it is probable that a significant reversal in the amount of cumulative revenue recognized will not occur when the uncertainty associated with the variable consideration is subsequently resolved. As of September 30, 2024 and 2023, the total liability was \$26.0 million and \$23.7 million, respectively, primarily associated with the annual right to exchange on-premises subscription software.

Practical Expedients

We have elected certain practical expedients associated with our revenue recognition policy. We do not account for significant financing components if the period between revenue recognition and when the customer pays for the products or services is one year or less. Additionally, we recognize revenue equal to the amount we have a right to invoice when the amount corresponds directly with the value to the customer of our performance to date. Finally, revenue is recognized net of any taxes collected from customers that are subsequently remitted to governmental authorities.

Cash Equivalents

Our cash equivalents are invested in money market accounts and time deposits of financial institutions. We have established guidelines relative to credit ratings, diversification and maturities that are intended to maintain safety and liquidity. Cash equivalents include highly liquid investments with original maturity periods of three months or less when purchased.

Equity Securities

In 2022, we sold shares of a common stock investment in Matterport for a total of \$42.7 million. The aggregate realized gain from the original investment of \$8.7 million was \$34.0 million, including cumulative recognized gains prior to 2022, partially offset by a recognized loss of \$34.8 million in 2022. The loss in 2022 was recognized in Other income, net in the Consolidated Statements of Operations. As of and subsequent to September 30, 2022, PTC held no shares in Matterport.

Concentration of Credit Risk and Fair Value of Financial Instruments

The amounts reflected in the Consolidated Balance Sheets for Cash and cash equivalents, Accounts receivable and Accounts payable approximate their fair value due to their short maturities. Financial instruments that potentially subject us to concentration of credit risk consist primarily of investments, trade accounts receivable and foreign currency derivative instruments. Our cash, cash equivalents, and foreign currency derivatives are placed with financial institutions with high credit standings. Our credit risk for derivatives is also mitigated due to the short-term nature of the contracts. Our customer base consists of many geographically diverse customers dispersed across many industries. No individual customer comprised more than 10% of our trade accounts receivable as of September 30, 2024 or 2023 or more than 10% of our revenue for the years ended September 30, 2024, 2023 or 2022.

Fair Value Measurements

Fair value is defined as the price that would be received from the sale of an asset or paid to transfer a liability in the principal or most advantageous market for the asset or liability in an orderly transaction between market participants on the measurement date. When determining the fair value measurements for assets and liabilities required to be recorded at fair value, we consider assumptions that market participants would use when pricing the asset or liability, such as inherent risk, transfer restrictions, and risk of nonperformance.

The valuation hierarchy for disclosure of assets and liabilities reported at fair value prioritizes the inputs for such valuations into three broad levels:

- Level 1: quoted prices (unadjusted) in active markets for identical assets or liabilities;
- Level 2: quoted prices for similar assets and liabilities in active markets or inputs that are observable for the asset or liability, either directly or indirectly through market corroboration, for substantially the full term of the financial instrument; or
- Level 3: unobservable inputs that are supported by little or no market activity and that are significant to the fair value of the assets or liabilities.

A financial instrument's level within the fair value hierarchy is based on the lowest level of any input that is significant to the fair value measurement. The hierarchy requires us to maximize the use of observable inputs and minimize the use of unobservable inputs when measuring fair value.

Allowance for Doubtful Accounts

We maintain allowances for doubtful accounts for estimated losses resulting from the inability of our customers to make required payments. In determining the adequacy of the allowance for doubtful accounts, we analyze specific individual accounts receivable, historical bad debts, customer concentrations, customer credit-worthiness, current economic conditions, and accounts receivable aging trends.

Derivatives

Generally accepted accounting principles require all derivatives, whether designated in a hedging relationship or not, to be recorded on the balance sheet at fair value. Our earnings and cash flows are subject to fluctuations due to changes in foreign currency exchange rates. Our most significant foreign currency exposures relate to Eurozone countries, Japan, Sweden, Switzerland, China and India. Our foreign currency risk management strategy is principally designed to mitigate the future potential financial impact of changes in the U.S. Dollar value of anticipated transactions and balances denominated in foreign currencies resulting from changes in foreign currency exchange rates. We enter into derivative transactions, specifically foreign currency forward contracts and options, to manage our exposure to foreign currency exchange risk to reduce earnings volatility. We do not enter into derivative transactions for trading or speculative purposes. For a description of our non-designated hedge and net investment hedge activity see *Note 16. Derivative Financial Instruments*.

Non-Designated Hedges

We hedge our net foreign currency monetary assets and liabilities primarily resulting from foreign currency denominated receivables and payables with foreign exchange forward contracts to reduce the risk that our earnings and cash flows will be adversely affected by changes in foreign currency exchange rates. These contracts have maturities of up to approximately four months. Generally, we do not designate these foreign currency forward contracts as hedges for accounting purposes and changes in the fair value of these instruments are recognized immediately in earnings. Because we enter into forward contracts only as an economic hedge, any gains or losses on the underlying foreign-denominated balance are generally offset by the losses or gains on the forward contract. Gains and losses on forward contracts and foreign denominated receivables and payables are included in Other income, net.

In 2023, we hedged our forecasted U.S. Dollar cash flows with foreign exchange options to reduce the risk that they would be adversely affected by changes in Euro or Japanese Yen exchange rates. We did not hold any foreign currency option contracts as of September 30, 2023 or 2024. We did not designate these foreign currency options as hedges for accounting purposes and changes in the fair value of these instruments were recognized immediately in earnings. Because we entered into options as an economic hedge, currency impacts on the Euro or Japanese Yen-denominated operations as compared to the forecasted plan rate may have been partially offset by gains on the options. Gains and losses on foreign exchange options were included in Other income, net.

Net Investment Hedges

We translate balance sheet accounts of subsidiaries with foreign functional currencies into the U.S. Dollar using the exchange rate at each balance sheet date. Resulting translation adjustments are reported as a component of Accumulated other comprehensive loss on the Consolidated Balance Sheets. We designate certain foreign exchange forward contracts as net investment hedges against exposure on translation of balance sheet accounts of Euro and Japanese Yen functional subsidiaries. Net investment hedges partially offset the impact of Foreign currency translation adjustment recorded in Accumulated other comprehensive loss on the Consolidated Balance Sheets. All foreign exchange forward contracts are carried at fair value on the Consolidated Balance Sheets and the maximum duration of net investment hedge foreign exchange forward contracts is approximately three months.

Net investment hedge relationships are designated at inception, and effectiveness is assessed retrospectively on a quarterly basis using the net equity position of Euro and Japanese Yen functional subsidiaries. As the forward contracts are highly effective in offsetting exchange rate exposure, we record changes in these net investment hedges in Accumulated other comprehensive loss and subsequently upon contract maturity reclassify them to Foreign currency translation adjustment in Accumulated other comprehensive loss. Changes in the fair value of foreign exchange forward contracts due to changes in time value are excluded from the assessment of effectiveness. Our derivatives are not subject to any credit contingent features. We manage credit risk with counterparties by trading among several counterparties, and we review our counterparties' credit at least quarterly.

Leases

We determine if an arrangement is a lease at inception. Operating leases are included in Operating right-of-use lease assets, Short-term lease obligations, and Long-term lease obligations on our Consolidated Balance Sheets. Our operating leases are primarily for office space, automobiles, servers, and office equipment. We made an election not to separate lease components from non-lease components for office space, servers and office equipment. We combine fixed payments for non-lease components with lease payments and account for them together as a single lease component which increases the amount of our lease assets and liabilities. Finance leases are included in Property and equipment, Accrued expenses and other current liabilities, and Other liabilities on our Consolidated Balance Sheets.

Right-of-use assets represent our right to use an underlying asset for the lease term and lease liabilities represent our obligation to make lease payments arising from the leases. Right-of-use assets and liabilities are recognized at the lease commencement date based on the present value of lease payments over the lease term. As most of our leases do not provide an implicit rate, we generally use our incremental borrowing rate based on the estimated rate of interest for collateralized borrowing over a similar term as that of the lease payments at the commencement date. The right-of-use assets include any lease payments made and exclude lease incentives received. Operating lease expense is recognized on a straight-line basis over the lease term.

Our lease terms include periods under options to extend or terminate the lease when it is reasonably certain that we will exercise that option. We generally use the base non-cancellable lease term when determining the lease assets and liabilities.

Certain lease agreements contain variable payments, which are expensed as incurred and not included in the lease assets and liabilities. These variable payments include insurance, taxes, index-based payment adjustments, and payments for maintenance and utilities.

Our operating leases expire at various dates through 2037.

Property and Equipment

Property and equipment are recorded at cost and depreciated using the straight-line method over their estimated useful lives. Computer hardware and software are typically amortized over three to five years, and furniture and fixtures over three to twelve years. Leasehold improvements are amortized over the shorter of their useful lives or the remaining terms of the related leases. Maintenance and repairs are charged to expense when incurred; additions and improvements are capitalized. When an item is sold or retired, the cost and related accumulated depreciation is relieved, and the resulting gain or loss, if any, is recognized in income.

Software Development Costs

We incur costs to develop computer software to be licensed or otherwise marketed to customers. Our research and development expenses consist principally of salaries and benefits, costs of computer software and equipment, and facility expenses. Research and development costs are expensed as incurred, except for costs of internally developed or externally purchased software that qualify for capitalization. Development costs for software to be sold externally incurred subsequent to the establishment of technological feasibility, but prior to the general release of the product, are capitalized and, upon general release, are amortized using the greater of either the straight-line method over the expected life of the related products or based upon the pattern in which economic benefits related to such assets are realized. The straight-line method is used if it approximates the same amount of expense as that calculated using the ratio that current period gross product revenues bear to total anticipated gross product revenues. No internal development costs for software to be sold externally were capitalized in 2024, 2023 or 2022. We purchased software of \$4.1 million, \$1.0 million, and \$6.0 million in 2024, 2023, and 2022, respectively. Additionally, we acquired capitalized software through business combinations (for further detail, see *Note 6. Acquisitions and Disposition of Businesses*). These assets are included in Acquired intangible assets, net in the accompanying Consolidated Balance Sheets.

Business Combinations

We allocate the purchase price of acquisitions to the tangible and intangible assets acquired and liabilities assumed based on their estimated fair value. Goodwill is measured as the excess of the purchase price over the value of net identifiable assets acquired. While best estimates and assumptions are used to accurately value assets acquired and liabilities assumed at the acquisition date as well as contingent consideration, where applicable, our estimates are inherently uncertain and subject to refinement. Any adjustments to estimated fair value are recorded to goodwill, provided that we are within the measurement period (up to one year from the acquisition date) and that we continue to collect information to determine estimated fair value. Subsequent to the measurement period or our final determination of estimated fair value, whichever comes first, adjustments are recorded in the Consolidated Statements of Operations.

Segments

We operate as a single operating and reportable segment. Operating segments are defined as components of an enterprise about which separate financial information is evaluated regularly by the chief operating decision maker ("CODM") in deciding how to allocate resources and in assessing performance. Our CODM is our Chief Executive Officer.

Goodwill, Acquired Intangible Assets and Long-lived Assets

Goodwill is the amount by which the purchase price in a business acquisition exceeds the fair value of net identifiable assets on the date of purchase.

Goodwill is evaluated for impairment annually as of the end of the third quarter, or more frequently if events or changes in circumstances indicate that the asset might be impaired. Factors we consider important, on an overall company basis and segment basis, when applicable, that could trigger an impairment review include significant under-performance relative to historical or projected future

operating results, significant changes in our use of the acquired assets or the strategy for our overall business, significant negative industry or economic trends, a significant decline in our stock price for a sustained period and a reduction of our market capitalization relative to net book value.

Our annual goodwill impairment test is based on either a quantitative or qualitative assessment. A quantitative assessment compares the fair value of the reporting unit to its carrying value. If the reporting unit's carrying value exceeds its fair value, we record an impairment loss equal to the difference between the carrying value of goodwill and its estimated fair value. We estimate the fair values of our reporting unit using discounted cash flow valuation models. Those models require estimates of future revenues, profits, capital expenditures, working capital, terminal values based on revenue multiples, and discount rates for the reporting unit. We estimate these amounts by evaluating historical trends; current budgets and operating plans; and industry data. A qualitative assessment is designed to determine whether we believe it is more likely than not that the fair value of our reporting unit exceeds its carrying value. A qualitative assessment includes a review of qualitative factors, including company-specific (financial performance and long-range plans), industry, and macroeconomic factors, and a consideration of the fair value of the reporting unit at the last valuation date.

During the third fiscal quarter of 2024, we completed our annual impairment test of goodwill, which was based on a qualitative assessment, and concluded that there was no impairment. Through September 30, 2024, there were no events or changes in circumstances that indicated that the carrying values of goodwill or acquired intangible assets may not be recoverable.

Long-lived assets primarily include property and equipment, right-of-use lease assets, and acquired intangible assets with finite lives (including purchased software, customer lists and trademarks). Purchased software is amortized over periods up to 16 years, customer lists are amortized over periods up to 20 years and trademarks are amortized over periods up to 15 years. We review long-lived assets for impairment when events or changes in business circumstances indicate that the carrying amount of the assets may not be fully recoverable or that the useful lives of those assets are no longer appropriate. There were no such events or changes in business circumstances in 2024. An impairment test is based on a comparison of the undiscounted cash flows to the recorded value of the asset or asset group. If impairment is indicated, the asset is written down to its estimated fair value based on a discounted cash flow analysis.

Advertising Expenses

Advertising costs are expensed as incurred. Total advertising expenses incurred were \$15.0 million, \$11.7 million and \$8.6 million in 2024, 2023 and 2022, respectively, and are included in Sales and marketing expenses in the accompanying Consolidated Statements of Operations.

Income Taxes

Our income tax expense includes U.S. and international income taxes. Certain items of income and expense are not reported in tax returns and financial statements in the same year. The tax effects of these differences are reported as deferred tax assets and liabilities. Deferred tax assets are recognized for the estimated future tax effects of deductible temporary differences and tax operating loss and credit carryforwards. Changes in deferred tax assets and liabilities are recorded in the provision for income taxes. We assess the likelihood that our deferred tax assets will be recovered from future taxable income and, to the extent we believe that it is more likely than not that all or a portion of deferred tax assets will not be realized, we establish a valuation allowance. To the extent we establish a valuation allowance or increase this allowance in a period, we include an expense within Provision for income taxes in the Consolidated Statements of Operations.

Comprehensive Income

Comprehensive income consists of Net income and Other comprehensive income (loss), which includes foreign currency translation adjustments, changes in unrecognized actuarial gains and losses (net of tax) related to pension benefits, unrealized gains and losses on hedging instruments and unrealized gains and losses on marketable securities. We do not record tax provisions or benefits for the

net changes in the foreign currency translation adjustment, as we intend to reinvest permanently undistributed earnings of our foreign subsidiaries. Accumulated other comprehensive loss is reported as a component of Stockholders' equity and comprised the following as of September 30, 2024: cumulative translation adjustment losses of \$78.1 million, unrecognized actuarial losses related to pension benefits of \$15.2 million (\$10.5 million net of tax), and accumulated net losses from net investment hedges of \$14.8 million (\$13.1 million net of tax). As of September 30, 2023, Accumulated other comprehensive loss comprised the following: cumulative translation adjustment losses of \$114.5 million, unrecognized actuarial losses related to pension benefits of \$9.6 million (\$6.7 million net of tax), and accumulated net gains from net investment hedges of \$6.9 million (\$3.1 million net of tax).

Earnings per Share (EPS)

Basic EPS is calculated by dividing net income by the weighted average number of shares outstanding during the period. Diluted EPS is calculated by dividing net income by the weighted average number of shares outstanding plus the dilutive effect, if any, of outstanding stock options, restricted shares and restricted stock units using the treasury stock method. The calculation of the dilutive effect of outstanding equity awards under the treasury stock method includes consideration of proceeds from the assumed exercise of stock options, unrecognized compensation expense and any tax benefits as additional proceeds. Anti-dilutive shares excluded from the calculations of diluted EPS were immaterial in the years ended September 30, 2024, 2023, and 2022.

The following table presents the calculation for both basic and diluted EPS:

(in thousands, except per share data)

	Year ended September 30,		
	2024	2023	2022
Net income	\$ 376,333	\$ 245,540	\$ 313,081
Weighted average shares outstanding	119,679	118,341	117,194
Dilutive effect of employee stock options, restricted shares and restricted stock units	1,063	993	1,039
Diluted weighted average shares outstanding	120,742	119,334	118,233
Earnings per share—Basic	\$ 3.14	\$ 2.07	\$ 2.67
Earnings per share—Diluted	\$ 3.12	\$ 2.06	\$ 2.65

Stock-Based Compensation

We measure the compensation cost of employee services received in exchange for an award of equity based on the grant-date fair value of the award. That cost is recognized over the period during which an employee is required to provide service in exchange for the award. See *Note 12. Equity Incentive Plans* for a description of the types of equity awards granted, the compensation expense related to such awards and detail of such awards outstanding. See *Note 8. Income Taxes* for detail of the tax benefit related to stock-based compensation recognized in the Consolidated Statements of Operations.

Pending Accounting Pronouncements

Disaggregation of Income Statement Expenses

In November 2024, the FASB issued ASU 2024-03, Income Statement—Reporting Comprehensive Income—Expense Disaggregation Disclosures (Subtopic 220-40): Disaggregation of Income Statement Expenses. The ASU will be effective for us in the second quarter of 2028, ending March 31, 2028. We are still evaluating the impact of this new guidance on our consolidated financial statements, but we expect the adoption to result in disclosure changes only.

Improvements to Income Tax Disclosures

In December 2023, the FASB issued ASU 2023-09, Income Taxes (Topic 740): Improvements to Income Tax Disclosures. The ASU will be effective for us in 2026. We expect the adoption to result in disclosure changes only.

Improvements to Reportable Segment Disclosures

In November 2023, the FASB issued ASU 2023-07, Segment Reporting (Topic 280): Improvements to Reportable Segment Disclosures. The ASU will be effective for us in 2025. We expect the adoption to result in disclosure changes only.

3. Revenue from Contracts with Customers

Receivables, Contract Assets, and Contract Liabilities

(in thousands)

	September 30,	
	2024	2023
Short-term and long-term receivables	\$ 1,062,052	\$ 997,490
Contract asset	\$ 14,410	\$ 16,465
Deferred revenue	\$ 775,274	\$ 681,550

As of September 30, 2024, \$14.4 million of our contract assets are expected to be transferred to receivables within the next 12 months and therefore are included in Other current assets. As of September 30, 2023, \$16.1 million of our contract asset balance was included in Other current assets with the remainder included in Other assets.

Approximately \$12.3 million of the September 30, 2023 contract asset balance was transferred to receivables during the year ended September 30, 2024 as a result of the right to payment becoming unconditional. Additions to contract asset of approximately \$10.2 million primarily related to revenue recognized in the period, net of billings. There were no impairments of contract assets in the year ended September 30, 2024.

During the year ended September 30, 2024, we recognized \$645.5 million of revenue that was included in deferred revenue as of September 30, 2023. There were additional deferrals of \$738.2 million, primarily related to new billings. For subscription contracts, we generally invoice customers annually.

Costs to Obtain or Fulfill a Contract

We recognize an asset for the incremental costs of obtaining a contract with a customer if the benefit of those costs is expected to be longer than one year. These deferred costs (primarily commissions) are amortized proportionately related to revenue over 5 years, which is generally longer than the term of the initial contract because of anticipated renewals as commissions for renewals are not commensurate with commissions related to our initial contracts. As of September 30, 2024 and September 30, 2023, deferred costs of \$42.5 million and \$41.8 million, respectively, were included in Other current assets and \$76.4 million and \$78.7 million, respectively, were included in Other assets. Amortization expense related to costs to obtain a contract with a customer was \$52.0 million, \$53.4 million, and \$50.9 million in the years ended September 30, 2024, 2023, and 2022, respectively. There were no substantial impairments of the contract cost asset in the years ended September 30, 2024 and 2023.

Remaining Performance Obligations

Our contracts with customers include transaction price amounts allocated to performance obligations that will be satisfied and recognized as revenue at a later date. As of September 30, 2024, the transaction price amounts include additional performance obligations of \$775.3 million recorded in deferred revenue and \$1,494.0 million that are not yet recorded in the Consolidated Balance Sheets. Of the total \$2,269.3 million, we expect to recognize approximately 57% over the next 12 months, 25% over the next 13 to 24 months, and the remaining amount thereafter.

Disaggregation of Revenue

(in thousands)

	Year ended September 30,		
	2024	2023	2022
Recurring revenue ⁽¹⁾	\$ 2,134,030	\$ 1,907,918	\$ 1,736,188
Perpetual license	32,196	38,640	34,065
Professional services	132,246	150,495	163,094
Total revenue	<u>\$ 2,298,472</u>	<u>\$ 2,097,053</u>	<u>\$ 1,933,347</u>

(1) Recurring revenue is comprised of on-premises subscription, perpetual support, SaaS, and hosting services revenue.

We report revenue by the following two product groups:

(in thousands)

	Year ended September 30,		
	2024	2023	2022
Product lifecycle management (PLM)	\$ 1,459,078	\$ 1,330,316	\$ 1,137,016
Computer-aided design (CAD)	839,394	766,737	796,331
Total revenue	<u>\$ 2,298,472</u>	<u>\$ 2,097,053</u>	<u>\$ 1,933,347</u>

We license products to customers worldwide. Our sales and marketing operations outside the United States are conducted principally through our international sales subsidiaries throughout Europe and the Asia Pacific region. Our international revenue is presented based on the location of our customer. Revenue for the geographic regions in which we operate is presented below.

(in thousands)

	Year ended September 30,		
	2024	2023	2022
Americas ⁽¹⁾	\$ 1,087,929	\$ 1,023,273	\$ 895,095
Europe ⁽²⁾	859,387	753,796	714,216
Asia Pacific	351,156	319,984	324,036
Total revenue	<u>\$ 2,298,472</u>	<u>\$ 2,097,053</u>	<u>\$ 1,933,347</u>

(1) Includes revenue in the United States totaling \$1,057.3 million, \$993.8 million, and \$864.7 million for 2024, 2023 and 2022, respectively.

(2) Includes revenue in Germany totaling \$330.5 million, \$292.0 million, and \$318.5 million for 2024, 2023 and 2022, respectively.

4. Restructuring and Other Charges (Credits), Net

Restructuring and other charges (credits), net includes restructuring charges (credits) and impairment and accretion expense charges related to the lease assets of exited facilities.

Restructuring and other charges (credits), net and related payments were immaterial in 2024 and 2023 and the balances of restructuring accruals were immaterial as of September 30, 2024 and 2023.

In 2022, Restructuring and other charges (credits), net totaled \$36.2 million, of which \$32.4 million is attributable to restructuring charges primarily related to employee termination benefits, \$5.1 million is attributable to other charges for professional fees included in restructuring related to our SaaS transformation, offset by a \$1.3 million credit attributable to sublease income and the reversal of lease liabilities related to exited lease facilities. These charges substantially relate to a plan to restructure our workforce and consolidate select facilities to align our customer facing and product-related functions with SaaS industry best practices and accelerate the opportunity for our on-premises customers to move to the cloud. We made cash payments related to restructuring charges of \$40.8 million (\$34.0 million related to employee charges, \$2.5 million in payments for other professional fees, and \$4.3 million in net payments for variable costs related to restructured facilities).

5. Property and Equipment

Property and equipment consisted of the following:

(in thousands)

	September 30,	
	2024	2023
Computer hardware and software	\$ 262,085	\$ 304,045
Furniture and fixtures	20,177	20,042
Leasehold improvements	79,802	77,703
Gross property and equipment	362,064	401,790
Accumulated depreciation and amortization	(286,877)	(313,399)
Net property and equipment	<u>\$ 75,187</u>	<u>\$ 88,391</u>

Depreciation expense was \$27.6 million, \$29.0 million and \$27.1 million in 2024, 2023 and 2022, respectively.

Property and equipment additions which were accrued and unpaid as of September 30, 2024, 2023, and 2022 were \$0.6 million, \$1.8 million, and \$6.8 million, respectively.

Our material long-lived assets primarily reside in the United States in 2024, 2023 and 2022.

6. Acquisitions and Disposition of Businesses

Acquisition and transaction-related costs were \$3.1 million, \$18.7 million and \$13.2 million in 2024, 2023 and 2022, respectively. Acquisition and transaction-related costs include direct costs of potential and completed acquisitions (e.g., investment banker fees and professional fees, including legal and valuation services) and expenses related to acquisition integration activities (e.g., professional fees and severance). Other transactional charges include third-party costs related to structuring unusual transactions, such as the divestiture of a portion of our business. These costs are classified in General and administrative expenses in the accompanying Consolidated Statements of Operations.

Our results of operations include or exclude, as applicable, the results of acquired or sold businesses beginning on their respective acquisition or sale date.

The acquisitions described below have been accounted for as business combinations. Assets acquired and liabilities assumed have been recorded at their estimated fair values as of the respective acquisition date. The fair values of intangible assets were based on valuations using discounted cash flow models which require the use of significant estimates and assumptions, including estimating future

revenues, future costs, and an applicable discount rate. The excess of the purchase price over the tangible assets, identifiable intangible assets and assumed liabilities was recorded as goodwill.

pure-systems

On October 4, 2023, we acquired pure-systems GmbH pursuant to a Share Purchase Agreement. pure-systems is a leading provider of product and software variant management solutions used by manufacturing companies to efficiently manage the different versions of software and systems engineering assets. The purchase price was \$93.5 million, net of cash acquired, which we financed primarily with a draw on the revolving line of our credit facility. pure-systems had approximately 50 employees on the close date.

The following table outlines the purchase price allocation for pure-systems:

<i>(in thousands)</i>		
Goodwill	\$	77,118
Customer relationships		17,400
Purchased software		10,000
Trademarks		800
Net tax liability		(8,860)
Acquired debt		(2,475)
Other net liabilities		(526)
Total	\$	93,457

The acquired customer relationships, purchased software, and trademarks are being amortized over useful lives of 18 years, 10 years, and 10 years, respectively, based on the expected economic benefit pattern of the assets. The acquired goodwill will not be deductible for income tax purposes. The amount of goodwill resulting from the purchase price allocation reflects the expected value that will be created by expanding our application lifecycle management (ALM) offerings, which are included within our PLM product group.

Our results of operations for the reported periods if presented on a pro forma basis would not differ materially from our reported results.

ServiceMax

On January 3, 2023, we acquired ServiceMax, Inc. pursuant to a Share Purchase Agreement dated November 17, 2022 by and among PTC, ServiceMax, Inc., and ServiceMax JV, LP. ServiceMax develops and licenses cloud-native, product-centric field service management (FSM) software, which is included within our PLM product group. The purchase price of \$1,448.2 million, net of cash acquired, was payable in two installments. Upon closing of the transaction, PTC paid the first installment of \$828.2 million, as adjusted for working capital, indebtedness, cash, and transaction expenses as set forth in the Share Purchase Agreement. The remaining installment of \$650.0 million, of which \$620.0 million represents the fair value as of the acquisition date and \$30.0 million is imputed interest, was paid in October 2023. The fair value of the deferred acquisition payment was calculated based on our borrowing rate at the time of the acquisition.

PTC borrowed \$630 million under the revolving line of our new credit facility and \$500 million under the term loan of the new credit facility to repay amounts under the prior credit facility and to pay the closing purchase price and transaction expenses related to the acquisition. ServiceMax had approximately 500 employees on the close date. In the year ended September 30, 2023, ServiceMax revenue was \$137.6 million and ServiceMax earnings were immaterial.

The following table sets forth the purchase price allocation for ServiceMax. The purchase price allocation includes the finalization of measurement period adjustments related to intangibles and deferred tax liabilities that resulted in a \$3.5 million increase in customer relationships, a \$3.2 million increase in net tax liability, and a \$0.3 million decrease in goodwill compared to the balances reported as of March 31, 2023. We also recorded a liability of \$620.0 million related to the fair value of the \$650.0 million deferred purchase price payment.

<i>(in thousands)</i>		
Goodwill	\$	974,850
Customer relationships		512,700
Purchased software		106,900
Accounts receivable		58,722
Trademarks		9,000
Other net assets		5,540
Net tax liability		(121,656)
Deferred revenue		(97,829)
Total	\$	1,448,227

The acquired customer relationships, purchased software, and trademarks are being amortized over useful lives of 20 years, 10 years, and 10 years, respectively, based on the expected economic benefit pattern of the assets. The acquired goodwill will not be deductible for income tax purposes. The amount of goodwill resulting from the purchase price allocation reflects expected future growth as ServiceMax expands our closed-loop product lifecycle management (PLM) strategy.

Unaudited Pro Forma Financial Information

The unaudited pro forma financial information in the table below summarizes the combined results of operations for PTC and ServiceMax for the pro forma years ended September 30, 2023 and 2022. The unaudited pro forma financial information as presented below is for informational purposes only and is not necessarily indicative of the results of operations that would have been achieved if the acquisition had taken place at the beginning of fiscal 2022. Since the acquisition took place in fiscal 2023, the unaudited pro forma financial information was prepared as though ServiceMax was acquired at the beginning of fiscal 2022. The unaudited pro forma financial information for all periods presented includes adjustments to reflect certain business combination effects, including: amortization of acquired intangible assets, including the elimination of related ServiceMax expenses; acquisition-related costs incurred by both parties; reversal of certain costs incurred by ServiceMax which would not have been incurred had the acquisition occurred at the beginning of fiscal 2022; interest expense under the new combined capital structure; stock-based compensation charges; and the related tax effects as though ServiceMax was acquired as of the beginning of fiscal 2022.

The unaudited pro forma financial information for the years ended September 30, 2023 and 2022 presented below combines the historical results of PTC for those periods, the historical results of ServiceMax for the year ended October 31, 2022 and the three months ended January 31, 2023, and the effects of the pro forma adjustments listed above.

<i>(in thousands)</i>	Pro forma year ended			
	September 30,			
	2023		2022	
Revenue	\$	2,140,738	\$	2,101,796
Net income	\$	239,437	\$	230,655

The impact from acquisitions other than ServiceMax for the reported periods if presented on a pro forma basis would not differ materially from our reported results.

Intland Software

On April 29, 2022, we acquired Intland Software, GmbH, and Eger Invest GmbH (together, "Intland Software") pursuant to a Share Sale and Purchase Agreement. Intland Software developed and marketed the Codebeamer Application Lifecycle Management (ALM) family of software products. The purchase price of the acquisition was \$278.1 million, net of cash acquired, which was financed with cash on hand and \$264 million borrowed under our existing credit facility. Intland Software had approximately 150 employees on the close date.

The following table sets forth the purchase price allocation for Intland Software.

<i>(in thousands)</i>		
Goodwill	\$	240,971
Customer relationships		38,800
Purchased software		19,100
Accounts receivable		6,506
Trademarks		1,300
Net tax liability		(20,811)
Deferred revenue		(6,925)
Other net liabilities		(818)
Total	\$	278,123

The acquired customer relationships, purchased software, and trademarks are being amortized over useful lives of 11 years, 10 years, and 10 years, respectively, based on the expected economic benefit pattern of the assets. The acquired goodwill was allocated to our software products segment and will not be deductible for income tax purposes. The resulting amount of goodwill reflects the expected value that will be created by expanding our ALM offerings, which are complementary to our PLM offerings.

PLM Services Business Disposition

On June 1, 2022, we sold a portion of our PLM services business to ITC Infotech India Limited pursuant to a Strategic Partner Agreement dated as of April 20, 2022 by and between PTC and ITC Infotech. Consideration received from ITC Infotech for the sale was approximately \$60.4 million, consisting of \$32.5 million cash paid on closing and \$28.0 million of services to be provided by ITC Infotech to PTC for no additional charge.

We recognized a gain on the sale of \$29.8 million, which is included within Other income, net. The recognized gain consists of \$60.4 million of consideration received, less net assets of the business of \$30.6 million. Net assets include \$33.0 million of goodwill allocated to the business, less \$2.4 million of liabilities associated with approximately 160 employees who transferred to ITC Infotech. Goodwill was allocated to the sold business based on a relative fair value allocation of total goodwill of the Professional Services segment.

Additional future contingent consideration of up to \$20 million may be received by PTC based on certain performance milestones. We have elected to defer the recognition of gains associated with contingent consideration until they become realizable.

7. Goodwill and Acquired Intangible Assets

Goodwill and acquired intangible assets consisted of the following:

(in thousands)

	September 30, 2024			September 30, 2023		
	Gross Carrying Amount	Accumulated Amortization	Net Book Value	Gross Carrying Amount	Accumulated Amortization	Net Book Value
Goodwill (not amortized)			\$3,461,891			\$3,358,511
Intangible assets with finite lives (amortized) ⁽¹⁾ :						
Purchased software	\$ 634,439	\$ 436,471	\$ 197,968	\$ 615,915	\$ 395,109	\$ 220,806
Capitalized software	22,877	22,877	—	22,877	22,877	—
Customer lists and relationships	1,141,086	457,718	683,368	1,116,117	413,125	702,992
Trademarks and trade names	37,961	21,821	16,140	36,851	19,400	17,451
Other	3,941	3,941	—	3,867	3,867	—
	\$1,840,304	\$ 942,828	\$ 897,476	\$1,795,627	\$ 854,378	\$ 941,249
Total goodwill and acquired intangible assets			\$4,359,367			\$4,299,760

- (1) The weighted-average useful lives of purchased software, customer lists and relationships, and trademarks and trade names with a remaining net book value are 11 years, 17 years, and 11 years, respectively. The weighted-average useful life for all intangible assets in total is 15 years.

The changes in the carrying amounts of Goodwill from September 30, 2023 to September 30, 2024 are due to the impact of acquisitions and to foreign currency translation adjustments related to those asset balances that are recorded in non-U.S. currencies.

Changes in Goodwill were as follows:

(in thousands)

Balance, September 30, 2022	\$	2,353,654
ServiceMax acquisition		974,850
Foreign currency translation adjustments		30,007
Balance, September 30, 2023	\$	3,358,511
pure-systems acquisition		77,118
Foreign currency translation adjustments		26,262
Balance, September 30, 2024	\$	3,461,891

The aggregate amortization expense for intangible assets with finite lives recorded for the years ended September 30, 2024, 2023 and 2022 was reflected in our Consolidated Statements of Operations as follows:

(in thousands)

	Year ended September 30,		
	2024	2023	2022
Amortization of acquired intangible assets	\$ 42,018	\$ 40,022	\$ 34,970
Cost of revenue	38,495	35,694	25,578
Total amortization expense	\$ 80,513	\$ 75,716	\$ 60,548

The estimated aggregate future amortization expense for intangible assets with finite lives remaining as of September 30, 2024 is \$78.7 million for 2025, \$78.8 million for 2026, \$78.9 million for 2027, \$76.1 million for 2028, \$73.0 million for 2029 and \$512.0 million thereafter.

8. Income Taxes

Our Income (loss) before income taxes consisted of the following:

(in thousands)

	Year ended September 30,		
	2024	2023	2022
Domestic	\$ 43,504	\$ (49,193)	\$ 97,460
Foreign	425,458	381,759	299,638
Total income before income taxes	<u>\$ 468,962</u>	<u>\$ 332,566</u>	<u>\$ 397,098</u>

Our Provision for income taxes consisted of the following:

(in thousands)

	Year ended September 30,		
	2024	2023	2022
Current:			
Federal	\$ 44,642	\$ 7,311	\$ 767
State	25,359	10,020	6,675
Foreign	61,668	53,019	33,612
	<u>131,669</u>	<u>70,350</u>	<u>41,054</u>
Deferred:			
Federal	(60,378)	(11,821)	25,730
State	(7,387)	(10,028)	(3,177)
Foreign	28,725	38,525	20,410
	<u>(39,040)</u>	<u>16,676</u>	<u>42,963</u>
Provision for income taxes	<u>\$ 92,629</u>	<u>\$ 87,026</u>	<u>\$ 84,017</u>

Taxes computed at the statutory federal income tax rates are reconciled to the Provision for income taxes as follows:

(in thousands)

	Year ended September 30,					
	2024		2023		2022	
Statutory federal income tax rate	\$ 98,482	21%	\$ 69,839	21%	\$ 83,391	21%
State income taxes, net of federal tax benefit	4,631	1%	577	0%	6,518	2%
Federal research and development credits	(11,203)	(2)%	(7,751)	(2)%	(7,477)	(2)%
Uncertain tax positions	7,268	2%	23,302	7%	2,418	1%
Foreign tax credit	(30,119)	(7)%	(11,415)	(3)%	(9,078)	(2)%
Foreign rate differences	(15,368)	(3)%	(20,829)	(6)%	(8,982)	(2)%
Foreign tax on U.S. provision	15,120	3%	11,415	3%	9,078	2%
Excess tax benefits from restricted stock	(9,225)	(2)%	(6,963)	(2)%	(8,278)	(2)%
U.S. permanent items	2,711	0%	5,341	2%	3,453	—
Non-deductible compensation	10,157	2%	8,344	3%	11,851	3%
Base Erosion Anti-Abuse Tax (BEAT)	3,264	1%	—	—	—	—
GILTI, net of foreign tax credits	31,388	7%	17,861	5%	2,705	1%
Foreign-Derived Intangible Income (FDII)	(15,148)	(3)%	(8,987)	(3)%	(6,848)	(2)%
Non-deductible imputed interest	—	—	6,292	2%	—	—
Sale of a portion of the PLM services business	—	—	—	—	6,844	2%
Other, net	671	0%	—	(1)%	(1,578)	(1)%
Provision for income taxes	<u>\$ 92,629</u>	<u>20%</u>	<u>\$ 87,026</u>	<u>26%</u>	<u>\$ 84,017</u>	<u>21%</u>

In 2024, 2023, and 2022, our effective tax rate is impacted by our corporate structure in which our foreign taxes are at a net effective tax rate lower than the U.S. rate. A significant amount of our foreign earnings is generated by our subsidiaries organized in Ireland and the Cayman Islands. In 2024, 2023, and 2022, the foreign rate differential predominantly relates to these earnings. In addition to the foreign rate differential, our tax rate differed from the U.S. statutory federal income tax due to the net effects of the Global Intangible Low-Taxed Income (GILTI) and Foreign Derived Intangible Income (FDII) regimes (together referred to as U.S. Tax reform), and the excess tax benefit related to stock-based compensation.

In 2024, the rate was impacted by a U.S. Tax Court ruling in *Varian Medical Systems, Inc. v. Commissioner*, issued on August 26, 2024. The ruling related to the U.S. taxation of deemed foreign dividends in the transition year of the Tax Act (our fiscal 2018). As a result, we recorded a \$14.4 million benefit for additional foreign tax credits that have become available to us. Additionally, our rate included a net benefit of \$4.4 million for the effects of IRS procedural guidance requiring consent for previously automatic changes of accounting method. The IRS procedural guidance change significantly increased our estimated taxable income in the year ended September 30, 2024, resulting in an increase to the estimated tax benefit for the deductions associated with Global Intangible Low-Taxed Income and Foreign-Derived Intangible Income. The benefit from this IRS procedural guidance change will reverse in a future fiscal period if we receive IRS consent for a change in the treatment of these deductions. These benefits were offset by a tax expense of \$4.6 million related to a tax reserve in a foreign jurisdiction.

Additionally in 2023, our results include tax expense of \$21.8 million relating to an uncertain tax position regarding transfer pricing in a foreign jurisdiction where we are currently under audit. Our rate was also impacted by non-deductible imputed interest related to the deferred payment on the acquisition of ServiceMax, Inc.

In 2022, our results include tax expense relating to the book over tax basis difference in goodwill disposed of as part of the sale of a portion of the PLM services business.

At September 30, 2024 and 2023, income taxes payable and income tax accruals recorded on the accompanying Consolidated Balance Sheets were \$75.3 million (\$40.0 million in Accrued income taxes, \$6.2 million in Accrued expenses and other current liabilities and \$29.1 million in Other liabilities) and \$30.4 million (\$14.9 million in Accrued income taxes, \$4.8 million in Accrued expenses and other current liabilities and \$10.7 million in Other liabilities), respectively. At September 30, 2024 and 2023, prepaid taxes recorded in Prepaid expenses on the accompanying Consolidated Balance Sheets were \$14.0 million and \$22.7 million, respectively. We made net income tax payments of \$68.6 million, \$65.9 million and \$55.0 million in 2024, 2023 and 2022, respectively.

The significant temporary differences that created deferred tax assets and liabilities are shown below:

(in thousands)

	September 30,	
	2024	2023
Deferred tax assets:		
Net operating loss carryforwards	\$ 14,141	\$ 22,272
Foreign tax credits	2,028	3,750
Capitalized research and development	136,001	83,748
Pension benefits	7,629	5,327
Prepaid expenses	18,551	15,040
Deferred revenue	2,607	5,902
Stock-based compensation	22,231	19,684
Other reserves not currently deductible	34,422	19,604
Amortization of intangible assets	60,527	90,888
Research and development and other tax credits	25,706	64,618
Lease liabilities	46,460	50,102
Fixed assets	106,741	83,796
Capital loss carryforward	3,875	3,700
Other	3,528	2,279
Gross deferred tax assets	484,447	470,710
Valuation allowance	(21,755)	(21,695)
Total deferred tax assets	462,692	449,015
Deferred tax liabilities:		
Acquired intangible assets not deductible	(257,731)	(263,178)
Lease assets	(34,160)	(37,332)
Pension prepayments	(3,283)	(1,808)
Deferred revenue	(1,243)	(17,400)
Depreciation	(4,683)	(5,779)
Deferred income	(11,636)	(8,656)
Prepaid commissions	(13,738)	(13,757)
Other	(9,030)	(7,294)
Total deferred tax liabilities	(335,504)	(355,204)
Net deferred tax assets	\$ 127,188	\$ 93,811

We reassess our valuation allowance requirements each financial reporting period. We assess available positive and negative evidence to estimate whether sufficient future taxable income will be generated to use our existing deferred tax assets.

For U.S. tax return purposes, net operating loss (NOL) carryforwards and tax credits are generally available to be carried forward to future years, subject to certain limitations. At September 30, 2024, we had U.S. federal tax effected NOL carryforwards from acquisitions of \$0.8 million which expire in 2025 to 2034. The use of these NOL carryforwards is limited as a result of the change in ownership rules under Internal Revenue Code Section 382. Additionally, we have state NOL carryforwards, net of federal benefit, of \$6.9 million, with various expiration dates beginning in 2027, a number of which never expire.

As of September 30, 2024, we had federal R&D credit carryforwards of \$4.6 million, which expire beginning in 2026 and ending in 2044, and Massachusetts R&D credit carryforwards of \$29.2 million, which expire beginning in 2025 and ending in 2039. We also had foreign tax credits of \$2.0 million, which expire beginning in 2032 and ending in 2034.

We also have tax effected NOL carryforwards in non-U.S. jurisdictions totaling \$6.9 million, the majority of which do not expire, and non-U.S. tax credit carryforwards of \$2.2 million that expire beginning in 2031 and ending in 2042. Additionally, we have tax effected amortization carryforwards of \$66.1 million in a foreign jurisdiction. There are limitations imposed on the use of such attributes that could restrict the recognition of any tax benefits.

As of September 30, 2024, we have a valuation allowance of \$17.4 million against net deferred tax assets in the United States and a valuation allowance of \$4.4 million against net deferred tax assets in certain foreign jurisdictions. The \$17.4 million U.S. valuation allowance relates to Massachusetts tax credit carryforwards which we do not expect to realize a benefit from prior to expiration. The valuation allowance recorded against net deferred tax assets of certain foreign jurisdictions is established primarily

for our capital loss carryforwards, the majority of which do not expire. However, there are limitations imposed on the utilization of such capital losses that could restrict the recognition of any tax benefits.

The changes to the valuation allowance were primarily due to the following:

(in thousands)

	Year ended September 30,		
	2024	2023	2022
Valuation allowance, beginning of year	\$ 21,695	\$ 22,283	\$ 52,085
Net increase (decrease) in deferred tax assets with a full valuation allowance ⁽¹⁾	60	(588)	(29,802)
Valuation allowance, end of year	<u>\$ 21,755</u>	<u>\$ 21,695</u>	<u>\$ 22,283</u>

(1) In 2022, this change included the loss of foreign attributes upon liquidation of a foreign subsidiary.

Our policy is to record estimated interest and penalties related to the underpayment of income taxes as a component of our income tax provision. In 2024, 2023 and 2022 we recorded interest expense of \$3.3 million, \$0.5 million and \$0.2 million, respectively. In 2024, 2023 and 2022 we had no penalty expenses in our income tax provision. As of September 30, 2024 and 2023, we had accrued \$3.1 million and \$1.4 million of net estimated interest expense, respectively. We had no accrued tax penalties as of September 30, 2024, 2023 or 2022.

Unrecognized tax benefits (in thousands)	Year ended September 30,		
	2024	2023	2022
Unrecognized tax benefit, beginning of year	\$ 50,742	\$ 23,923	\$ 21,166
Tax positions related to current year:			
Additions	7,570	7,075	3,144
Tax positions related to prior years:			
Additions	10,705	20,855	785
Reductions	(452)	—	(1,172)
Settlements	(3,530)	—	—
Statute expirations	—	(1,111)	—
Unrecognized tax benefit, end of year	<u>\$ 65,035</u>	<u>\$ 50,742</u>	<u>\$ 23,923</u>

If all of our unrecognized tax benefits as of September 30, 2024 were to become recognizable in the future, we would record a benefit to the income tax provision of \$65.0 million (which would be partially offset by an increase in the U.S. valuation allowance of \$6.2 million). Although we believe our tax estimates are appropriate, the final determination of tax audits and any related litigation could result in favorable or unfavorable changes in our estimates. We believe it is reasonably possible that within the next 12 months the amount of unrecognized tax benefits related to the resolution of multi-jurisdictional tax positions could be reduced by up to \$27.0 million as audits close and statutes of limitations expire.

In the normal course of business, PTC and its subsidiaries are examined by various taxing authorities, including the IRS in the United States. We regularly assess the likelihood of additional assessments by tax authorities and provide for these matters as appropriate. We are currently under audit by tax authorities in several jurisdictions, including Germany, Ireland, and Italy. Audits by tax authorities typically involve examination of the deductibility of certain permanent items, transfer pricing, limitations on net operating losses and tax credits. Although we believe our tax estimates are appropriate, the final determination of tax audits and any related litigation could result in material changes in our estimates. As of September 30, 2024, we remained subject to examination in the following major tax jurisdictions for the tax years indicated:

Major Tax Jurisdiction	Open Years
United States	2021 through 2024
Germany	2015 through 2024
France	2023 through 2024
Japan	2019 through 2024
Ireland	2019 through 2024

Additionally, net operating loss and tax credit carryforwards from certain earlier periods in these jurisdictions may be subject to examination to the extent they are used in later periods.

We incurred expenses related to stock-based compensation in 2024, 2023 and 2022 of \$223.5 million, \$206.5 million and \$174.9 million, respectively. Accounting for the tax effects of stock-based awards requires that we establish a deferred tax asset as the compensation is recognized for financial reporting prior to recognizing the tax deductions. The tax benefit recognized in the Consolidated Statements of Operations related to stock-based compensation totaled \$27.5 million, \$33.4 million and \$27.1 million in 2024, 2023 and 2022, respectively. Upon vesting of the stock-based awards, the actual tax deduction is compared with the cumulative financial reporting compensation cost and any excess tax deduction is considered a windfall tax benefit and is recorded to the tax provision. In 2024, 2023 and 2022, net windfall tax benefits of \$10.2 million, \$7.8 million and \$5.2 million were recorded to the tax provision.

Prior to the passage of the U.S. Tax Cuts and Jobs Act in December of 2017 (the Tax Act), we asserted that substantially all of the undistributed earnings of our foreign subsidiaries were considered indefinitely reinvested and accordingly, no deferred taxes were provided. Pursuant to the provisions of the U.S. Tax Act, these earnings were subjected to U.S. federal taxation via a one-time transition tax, and there is therefore no longer a material cumulative basis difference associated with the undistributed earnings. We maintain our assertion of our intention to permanently reinvest these earnings outside the United States unless repatriation can be done substantially tax-free, with the exception of our Taiwan subsidiary. If we decide to repatriate any additional non-U.S. earnings in the future, we may be required to establish a deferred tax liability on such earnings. The amount of unrecognized deferred tax liability on the undistributed earnings would not be material.

9. Debt

As of September 30, 2024 and 2023, we had the following short- and long-term debt obligations:

(in thousands)

	September 30,	
	2024	2023
4.000% Senior Notes due 2028	\$ 500,000	\$ 500,000
3.625% Senior Notes due 2025	500,000	500,000
Credit facility revolver line ⁽¹⁾⁽²⁾	262,000	202,000
Credit facility term loan ⁽¹⁾⁽²⁾	490,625	500,000
Total debt	1,752,625	1,702,000
Unamortized debt issuance costs for the Senior Notes ⁽³⁾	(4,053)	(6,215)
Total debt, net of issuance costs ⁽⁴⁾	\$ 1,748,572	\$ 1,695,785

- (1) Unamortized debt issuance costs related to the credit facility were \$2.3 million included in Other current assets and \$5.2 million included in Other assets on the Consolidated Balance Sheet as of September 30, 2024 and \$2.3 million included in Other current assets and \$7.5 million included in Other assets on the Consolidated Balance Sheet as of September 30, 2023.
- (2) The stated maturity date under the credit facility on which both the revolver line and the term loan will mature and all amounts then outstanding will become due and payable is January 3, 2028. The term loan began amortizing in March 2024, with payments remaining of \$21.9 million in 2025, \$25.0 million in 2026 and 2027, and \$418.7 million in 2028.
- (3) Of the unamortized debt issuance costs for the Senior Notes, \$0.4 million was included in Current portion of long-term debt and \$3.6 million was included in Long-term debt on the Consolidated Balance Sheet as of September 30, 2024. As of September 30, 2023, all unamortized debt issuance costs for the Senior Notes were included in Long-term debt on the Consolidated Balance Sheets.
- (4) As of September 30, 2024, \$521.5 million of debt was classified as short term, including \$499.6 million associated with the 2025 Senior Notes and related debt issuance costs and \$21.9 million associated with the credit facility term loan. As of September 30, 2023, \$9.4 million of debt associated with the credit facility term loan was classified as short term with the remaining balance classified as long term.

Senior Unsecured Notes

In February 2020, we issued \$500 million in aggregate principal amount of 4.0% senior, unsecured long-term debt at par value, due in 2028 (the 2028 notes) and \$500 million in aggregate principal amount of 3.625% senior, unsecured long-term debt at par value, due in February 2025 (the 2025 notes).

As of September 30, 2024, the total estimated fair value of the 2028 and 2025 notes was approximately \$485.7 million and \$497.7 million, respectively, based on quoted prices for the notes on that date.

We were in compliance with all the covenants for all our Senior Notes as of September 30, 2024.

Terms of the 2028 and 2025 Notes

Interest on the 2028 and 2025 notes is payable semi-annually on February 15 and August 15. The debt indenture for the 2028 and 2025 notes includes covenants that limit our ability to, among other things, incur additional debt, grant liens on our properties or capital stock, enter into sale and leaseback transactions or asset sales, and make capital distributions.

We may, on one or more occasions, redeem the 2028 and 2025 notes in whole or in part at specified redemption prices. In certain circumstances constituting a change of control, we will be required to make an offer to repurchase the notes at a purchase price equal to 101% of the aggregate principal amount of the notes, plus accrued and unpaid interest. Our ability to repurchase the notes upon such event may be limited by law, by the indenture associated with the notes, by our then-available financial resources or by the terms of other agreements to which we may be party at such time. If we fail to repurchase the notes as required by the indenture, it would constitute an event of default under the indenture which, in turn, may also constitute an event of default under other obligations.

Credit Agreement

In January 2023, we entered into an amended and restated credit agreement for a new secured multi-currency bank credit facility with a syndicate of banks. Pursuant to the agreement, all revolving commitments under the prior credit agreement were replaced with the revolving commitments under the new credit facility. The new credit facility consists of (i) a \$1.25 billion revolving credit facility, (ii) a \$500 million term loan credit facility, and (iii) an incremental facility pursuant to which we may incur additional term loan tranches or increase the revolving credit facility. As of September 30, 2024, unused commitments under our credit facility were approximately \$988.0 million and amounts available for borrowing were \$972.1 million.

As of September 30, 2024, the fair value of our credit facility approximates its book value.

PTC Inc. and certain eligible foreign subsidiaries are eligible borrowers under the credit facility. Any borrowings by PTC Inc. under the credit facility would be guaranteed by PTC Inc.'s material domestic subsidiaries that become parties to the subsidiary guaranty, if any. Any borrowings by eligible foreign subsidiary borrowers would be guaranteed by PTC Inc. and any subsidiary guarantors and secured, subject to exceptions, by a first priority perfected security interest in substantially all existing and after-acquired personal property owned by PTC Inc. and its material domestic subsidiaries (except for certain indirect material domestic subsidiaries). As of September 30, 2024, \$83.0 million was borrowed by an eligible foreign subsidiary borrower.

Loans under the credit facility bear interest at variable rates that reset every 30 to 180 days depending on the base rate (for USD borrowings, either the adjusted Daily Simple RFR or adjusted Term SOFR) and period selected by us. The spread over the base rate depends on our total leverage ratio. As of September 30, 2024, the annual rate for borrowings outstanding was 6.9%. A quarterly revolving commitment fee on the undrawn portion of the revolving credit facility is required, ranging from 0.175% to 0.325% per annum, based upon our total leverage ratio.

The credit facility limits our ability to, among other things: incur additional indebtedness; incur liens or guarantee obligations; pay dividends and make other distributions; make investments and enter into joint ventures; dispose of assets; and engage in transactions with affiliates, except on an arms-length basis. Under the credit facility, PTC Inc. and its material domestic subsidiaries may not invest cash or property in, or loan amounts to, PTC Inc.'s foreign subsidiaries in aggregate amounts exceeding \$100 million for purposes other than acquisitions of businesses. The credit facility also requires that we maintain certain

financial ratios. As of September 30, 2024, we were in compliance with all financial and operating covenants of the credit facility.

In 2023, we incurred \$13.4 million in financing costs in connection with the January 2023 credit facility and related arrangements, of which \$4.2 million (related to a since-extinguished bridge loan) was expensed in the period and \$9.2 million was recorded as deferred debt issuance costs and included in Other assets and Other current assets on the Consolidated Balance Sheet. Deferred debt issuance costs are expensed over the term of the obligations.

Interest

In 2024, 2023 and 2022, we incurred interest expense of \$119.7 million, \$129.4 million, and \$54.3 million, respectively, and paid \$137.0 million, \$89.8 million and \$48.5 million, respectively, of interest on our debt. Interest expense in the year ended 2023 includes \$30.0 million of interest imputed on the \$650.0 million deferred acquisition payment related to the ServiceMax acquisition. The average interest rate on borrowings outstanding during 2024, 2023 and 2022 was approximately 5.4%, 4.9% and 3.4%, respectively.

10. Commitments and Contingencies

As of September 30, 2024 and 2023, we had letters of credit and bank guarantees outstanding of \$15.6 million (of which \$0.6 million was collateralized) and \$13.1 million (of which \$0.5 million was collateralized), respectively, primarily related to our corporate headquarters lease.

Legal and Regulatory Matters

With respect to legal proceedings and claims, we record an accrual for a contingency when it is probable that a liability has been incurred and the amount of the loss can be reasonably estimated.

We are subject to legal proceedings and claims against us in the ordinary course of business. As of September 30, 2024, we estimate that the range of possible outcomes for such matters is immaterial and we do not believe that resolving them will have a material adverse impact on our financial condition, results of operations or cash flows. However, the results of legal proceedings cannot be predicted with certainty. Should any of these legal proceedings and claims be resolved against us, the operating results for a reporting period could be adversely affected.

Guarantees and Indemnification Obligations

We enter into standard indemnification agreements with our customers and business partners in the ordinary course of our business. Under such agreements, we typically indemnify, hold harmless, and agree to reimburse the indemnified party for losses suffered or incurred by the indemnified party, in connection with patent, copyright or other intellectual property infringement claims by any third party with respect to our products. Indemnification may also cover other types of claims, including claims relating to certain data breaches. These agreements typically limit our liability with respect to indemnification claims other than intellectual property infringement claims. Historically, our costs to defend lawsuits or settle claims relating to such indemnity agreements have been minimal and, accordingly, we believe the estimated fair value of liabilities under these agreements is immaterial.

We warrant that our software products will perform in all material respects in accordance with our standard published specifications during the term of the license. Additionally, we generally warrant that our consulting services will be performed consistent with generally accepted industry standards and, in the case of fixed price services, the agreed-upon specifications. In most cases, liability for these warranties is capped. If necessary, we would provide for the estimated cost of product and service warranties based on specific warranty claims and claim history; however, we have not incurred significant cost under our product or services warranties. As a result, we believe the estimated fair value of these liabilities is immaterial.

11. Stockholders' Equity

Preferred Stock

We may issue up to 5.0 million shares of our preferred stock in one or more series. Of these shares, 0.5 million are designated as Series A Junior Participating Preferred Stock. Our Board of Directors is authorized to fix the rights and terms for any series of preferred stock without additional shareholder approval.

Common Stock

Our Articles of Organization authorize us to issue up to 500 million shares of our common stock. Our Board of Directors has authorized us to repurchase up to \$2 billion of our common stock in the period October 1, 2024 through September 30, 2027. We use cash from operations and borrowings under our credit facility to make such repurchases. All shares of our common stock repurchased are automatically restored to the status of authorized and unissued.

We did not repurchase any shares in 2024 or 2023. In 2022, we repurchased 1.05 million shares for \$125 million.

12. Equity Incentive Plans

We have two equity incentive plans, our 2000 Equity Incentive Plan and our 2016 Employee Stock Purchase Plan (ESPP).

Our 2000 Equity Incentive Plan provides for grants of nonqualified and incentive stock options, common stock, restricted stock, restricted stock units and stock appreciation rights to employees, directors, officers and consultants. We award restricted stock units (RSUs) as the principal equity incentive awards, including certain performance-based awards that are earned based on achieving performance criteria established by the Compensation Committee of our Board of Directors on or prior to the grant date. Each RSU represents the contingent right to receive one share of our common stock.

Our ESPP allows eligible employees to contribute up to 10% of their base salary, up to a maximum of \$25,000 per year and subject to any other plan limitations, toward the purchase of our common stock at a discounted price. The purchase price of the shares on each purchase date is equal to 85% of the lower of the fair market value of our common stock on the first and last trading days of each offering period. The ESPP is qualified under Section 423 of the Internal Revenue Code. We estimate the fair value of each purchase right under the ESPP on the date of grant using the Black-Scholes option valuation model and use the straight-line attribution approach to record the expense over the six-month offering period.

The following table shows total stock-based compensation expense recorded in our Consolidated Statements of Operations:

(in thousands)

	Year ended September 30,		
	2024	2023	2022
Cost of license revenue	\$ 133	\$ 145	\$ 272
Cost of support and cloud services revenue	14,479	12,801	11,022
Cost of professional services revenue	6,827	7,928	11,481
Sales and marketing	68,541	56,394	49,467
Research and development	60,266	58,931	41,944
General and administrative	73,215	70,260	60,677
Total stock-based compensation expense	<u>\$ 223,461</u>	<u>\$ 206,459</u>	<u>\$ 174,863</u>

Stock-based compensation expense in 2024, 2023 and 2022 includes \$6.8 million, \$6.8 million, and \$6.4 million respectively, related to our ESPP.

2000 Equity Incentive Plan Accounting and Stock-Based Compensation Expense

The fair value of RSUs granted in 2024, 2023 and 2022 was based on the fair market value of our stock on the date of grant for service- and certain performance- based RSUs and based on a Monte Carlo simulation model for relative total shareholder return (rTSR) performance RSUs. The weighted average fair value per share of RSUs granted in 2024, 2023 and 2022 was \$164.73, \$130.64 and \$114.31, respectively.

We account for forfeitures as they occur, rather than estimate expected forfeitures.

As of September 30, 2024, total unrecognized compensation cost related to unvested RSUs expected to vest was approximately \$190.3 million and the weighted average remaining recognition period for unvested RSUs was 17 months. As of September 30, 2024, the weighted average remaining vesting term for outstanding awards is 1.0 years.

As of September 30, 2024, 6.1 million shares of common stock were available for grant under the equity incentive plan and 2.1 million shares of common stock were reserved for issuance upon vesting of RSUs granted and outstanding.

The following table sets forth the restricted stock unit activity for the year ended September 30, 2024.

<i>(in thousands, except grant date fair value data)</i>	Shares	Weighted Average Grant Date Fair Value	Aggregate Intrinsic Value
Balance of outstanding RSUs at October 1, 2023	2,581	\$ 122.82	
Granted ⁽¹⁾	1,332	\$ 164.73	
Vested	(1,731)	\$ 124.29	
Forfeited or not earned	(118)	\$ 133.15	
Balance of outstanding RSUs at September 30, 2024	2,064	\$ 147.92	\$ 372,884

- (1) RSUs granted include 11 shares from prior period rTSR awards that were earned upon achievement of the performance criteria and vested in November 2023 and 42 shares from prior period performance-based awards that were earned upon achievement of the performance criteria and vested in November 2023.

The following table presents the number of RSU awards granted by award type:

<i>(in thousands)</i>	Year ended September 30, 2024
Performance-based RSUs ⁽¹⁾	97
Service-based RSUs ⁽²⁾	1,103
Relative Total Shareholder Return RSUs ⁽³⁾	79

- (1) The performance-based RSUs are primarily made up of RSUs granted to our executives and are eligible to vest based upon annual performance measures over a three-year period. To the extent earned, those performance-based RSUs will vest in three substantially equal installments on November 15, 2024, November 15, 2025, and November 15, 2026, or the date the Compensation Committee determines the extent to which the applicable performance criteria have been achieved for each performance period. Up to a maximum of two times the number of RSUs can be earned.
- (2) The service-based RSUs were granted to employees, including our executive officers. Substantially all service-based RSUs will vest in three substantially equal annual installments on or about the anniversary of the date of grant.
- (3) The rTSR RSUs were granted to our executives and are eligible to vest based on the performance of PTC stock relative to the stock performance of an index of PTC peer companies established as of the grant date, as determined at the end of the measurement period ending on September 30, 2026. The RSUs earned will vest on November 15, 2026. Up to a maximum of two times the number of rTSR RSUs eligible to be earned for the period may vest. If the stock price as of the beginning of the period is below the stock price at the end of the period, a maximum of 100% of the rTSR RSUs may vest.

The weighted-average fair value of the rTSR RSUs was \$209.16 per target RSU on the grant date. The fair value of the rTSR RSUs was determined using a Monte Carlo simulation model, a generally accepted statistical technique used to simulate a range of possible future stock prices for PTC and the peer group. The method uses a risk-neutral framework to model future stock price movements based upon the risk-free rate of return, the historical volatility of each entity, and the pairwise correlations of each entity being modeled. The fair value for each simulation is the product of the payout percentage determined by PTC's rTSR rank against the peer group, the projected price of PTC stock, and a discount factor based on the risk-free rate.

The significant assumptions used in the Monte Carlo simulation model were as follows:

	2024	2023	2022
Average volatility of peer group	49.30%	41.54%	34.67%
Risk-free interest rate	4.65%	4.12%	0.81%
Dividend yield	—%	—%	—%
Expected term (in years)	2.87	2.87	2.87

The value of stock issued for vested RSUs is as follows:

(in thousands)

	Year ended September 30,		
	2024	2023	2022
Stock issued for vested RSUs	\$ 289,333	\$ 240,066	\$ 199,738

In 2024, shares issued upon vesting of restricted stock units were net of 0.6 million shares retained by us to cover employee tax withholdings of \$101.9 million. In 2023, shares issued upon vesting of restricted stock units were net of 0.6 million shares retained by us to cover employee tax withholdings of \$82.8 million. In 2022, shares issued upon vesting of restricted stock and restricted stock units were net of 0.6 million shares retained by us to cover employee tax withholdings of \$69.0 million.

As of September 30, 2024 and September 30, 2023, we had liability-classified awards related to stock-based compensation based on a fixed monetary amount of \$47.7 million and \$44.9 million, respectively.

13. Employee Benefit Plan

We offer a savings plan to eligible U.S. employees. The plan is qualified under Section 401(k) of the Internal Revenue Code. Participating employees may defer a portion of their pre-tax compensation, as defined, but not more than statutory limits. We contribute 50% of the amount contributed by the employee, up to a maximum of 3% of the employee's earnings. Our matching contributions vest immediately. We made matching contributions of \$9.2 million, \$8.6 million and \$7.8 million in 2024, 2023 and 2022, respectively.

14. Pension Plans

We maintain several international defined benefit pension plans primarily covering certain employees of Computervision, which we acquired in 1998, and CoCreate, which we acquired in 2008, and covering employees in Japan. Benefits are based upon length of service and average compensation with vesting after one to five years of service. The pension cost was actuarially computed using assumptions applicable to each subsidiary plan and economic environment. We adjust our pension liability related to our plans due to changes in actuarial assumptions and performance of plan investments, as shown below. The vested benefit obligation is determined as the actuarial present value of the vested benefits to which the employee is currently entitled to but based on the employee's expected date of separation or retirement. Effective in 1998, benefits under one of the international plans were frozen indefinitely.

The following table presents the actuarial assumptions used in accounting for the pension plans:

	2024	2023	2022
Weighted average assumptions used to determine benefit obligations at September 30 measurement date:			
Discount rate	3.3%	4.2%	3.7%
Rate of increase in future compensation	3.0%	3.0%	3.6%
Weighted average assumptions used to determine net periodic pension cost for fiscal years ended September 30:			
Discount rate	4.2%	3.7%	1.0%
Rate of increase in future compensation	3.0%	3.6%	2.8%
Rate of return on plan assets	4.8%	4.8%	5.0%

In selecting the expected long-term rate of return on assets, we considered the current investment portfolio, and the investment return goals in the plans' investment policy statements. We, with input from the plans' professional investment managers and actuaries, also considered the average rate of earnings expected on the funds invested or to be invested to provide plan benefits. This process included determining expected returns for the various asset classes that comprise the plans' target asset

allocation. This basis for selecting the long-term asset return assumptions is consistent with the prior year. Using generally accepted diversification techniques, the plans' assets, in aggregate and at the individual portfolio level, are invested so that the total portfolio risk exposure and risk-adjusted returns best meet the plans' long-term liabilities to employees. Plan asset allocations are reviewed periodically and rebalanced to achieve target allocation among the asset categories when necessary. The discount rate is based on yield curves for highly rated corporate fixed income securities matched against cash flows for each future year.

The weighted long-term rate of return assumption, together with the assumptions used to determine the benefit obligations as of September 30, 2024 in the table above, will be used to determine our 2025 net periodic pension income, which we expect to be approximately \$0.3 million.

As of September 30, 2024, the weighted average interest credit rate used in our two cash balance pension plans is 4.3%.

All non-service net periodic pension costs are presented in Other income, net on the Consolidated Statement of Operations. The actuarially computed components of net periodic pension cost recognized in our Consolidated Statements of Operations for each year are shown below:

(in thousands)

	Year ended September 30,		
	2024	2023	2022
Interest cost of projected benefit obligation	\$ 2,368	\$ 2,126	\$ 550
Service cost	674	690	1,016
Expected return on plan assets	(3,361)	(3,541)	(3,712)
Amortization of prior service cost	—	—	(4)
Recognized actuarial loss	398	241	1,425
Settlement gain	(19)	—	(82)
Net periodic pension (benefit) cost	<u>\$ 60</u>	<u>\$ (484)</u>	<u>\$ (807)</u>

The following tables display the change in benefit obligation and the change in the plan assets and funded status of the plans as well as the amounts recognized in our Consolidated Balance Sheets:

(in thousands)

	Year ended September 30,	
	2024	2023
Change in benefit obligation:		
Projected benefit obligation, beginning of year	\$ 60,433	\$ 58,129
Service cost	674	690
Interest cost	2,368	2,126
Actuarial loss (gain)	7,128	(1,589)
Foreign exchange impact	3,319	3,714
Participant contributions	100	96
Benefits paid	(3,162)	(2,968)
Plan amendments	—	235
Settlements	(618)	—
Projected benefit obligation, end of year	\$ 70,242	\$ 60,433
Change in plan assets and funded status:		
Plan assets at fair value, beginning of year	\$ 68,875	\$ 67,581
Actual return (loss) on plan assets	5,120	(1,919)
Employer contributions	3,697	1,343
Participant contributions	100	96
Foreign exchange impact	3,745	4,593
Settlements	(618)	—
Benefits paid	(3,162)	(2,968)
Plan amendments	—	149
Plan assets at fair value, end of year	77,757	68,875
Projected benefit obligation, end of year	70,242	60,433
Underfunded status	\$ (12,438)	\$ (10,693)
Overfunded status	\$ 19,953	\$ 19,135
Accumulated benefit obligation, end of year	\$ 69,580	\$ 59,602
Amounts recognized in the balance sheet:		
Non-current asset	\$ 19,953	\$ 19,135
Non-current liability	\$ (12,083)	\$ (10,419)
Current liability	\$ (355)	\$ (274)
Amounts in accumulated other comprehensive loss:		
Unrecognized actuarial loss	\$ 15,230	\$ 9,573

As of September 30, 2024 and 2023, two of our pension plans had projected benefit obligations and accumulated benefit obligations in excess of plan assets. Three international plans were overfunded.

The following table shows the change in Accumulated other comprehensive loss:

(in thousands)

	Year ended September 30,	
	2024	2023
Accumulated other comprehensive loss, beginning of year	\$ 9,573	\$ 5,408
Recognized during year - net actuarial losses	(398)	(241)
Occurring during year - settlement gain	19	—
Occurring during year - net actuarial losses (gains)	5,369	3,871
Plan amendments	—	91
Foreign exchange impact	667	444
Accumulated other comprehensive loss, end of year	\$ 15,230	\$ 9,573

In 2024, our actuarial losses were impacted by the decrease in discount rate from 4.2% in 2023 to 3.3% in 2024. In 2023, our actuarial losses were impacted by volatility in capital markets and the impact of rising interest rates.

The following table shows the percentage of total plan assets for each major category of plan assets:

Asset category	September 30,	
	2024	2023
Equity securities	12%	31%
Fixed income securities	62%	42%
Commodities	6%	7%
Insurance company funds	9%	10%
Options	0%	0%
Cash	11%	10%
	100%	100%

We periodically review the pension plans' investments in the various asset classes. For the CoCreate plans in Germany, assets are actively allocated between equity and fixed income securities to achieve target return. For the other international plans, assets are allocated 100% to fixed income securities. The fixed income securities for the other international plans primarily include investments held with insurance companies with fixed returns. The plans' investment managers are provided specific guidelines under which they are to invest the assets assigned to them. In general, investment managers are expected to remain fully invested in their asset class with further limitations on risk as related to investments in a single security, portfolio turnover and credit quality.

The German CoCreate plan's investment policy prohibits the use of derivatives associated with leverage and speculation or investments in securities issued by PTC, except through index-related strategies and/or commingled funds. An investment committee oversees management of the pension plans' assets. Plan assets consist primarily of investments in equity and fixed income securities.

In 2024, 2023 and 2022, our actual return (loss) on plan assets was \$5.1 million, \$(1.9) million and \$2.3 million, respectively.

Based on actuarial valuations and additional voluntary contributions, we contributed \$3.7 million, \$1.3 million and \$3.0 million in 2024, 2023 and 2022, respectively, to the plans. In 2025, we expect to contribute \$0.6 million to the plans and to directly pay \$3.3 million in benefits.

As of September 30, 2024, benefit payments expected to be paid over the next ten years are as follows:

(in thousands)	Future Benefit Payments	
2025	\$	4,344
2026		4,151
2027		4,812
2028		4,913
2029		4,947
2030 to 2034		25,551

Fair Value of Plan Assets

The international plan assets are comprised primarily of investments in a trust and an insurance company. The underlying investments in the trust are primarily governmental fixed income securities and equities in funds and exchange-traded funds (ETFs). They are classified as Level 1 because the underlying units of the trust are traded in open public markets. The fair value of the underlying investments in equity securities and fixed income are based upon publicly-traded exchange prices.

(in thousands)

	September 30, 2024			
	Level 1	Level 2	Level 3	Total
Fixed income securities:				
Government	\$ 48,146	\$ —	\$ —	\$ 48,146
Equities in funds	9,550	—	—	9,550
Commodities	4,309	—	—	4,309
Insurance company funds ⁽¹⁾	—	7,385	—	7,385
Cash	8,277	—	—	8,277
Options	90	—	—	90
Total plan assets	<u>\$ 70,372</u>	<u>\$ 7,385</u>	<u>\$ —</u>	<u>\$ 77,757</u>

(in thousands)

	September 30, 2023			
	Level 1	Level 2	Level 3	Total
Fixed income securities:				
Government	\$ 27,322	\$ —	\$ —	\$ 27,322
Corporate investment grade	1,632	—	—	1,632
Large capitalization stocks	20,864	—	—	20,864
Commodities	4,977	—	—	4,977
Insurance company funds ⁽¹⁾	—	7,102	—	7,102
Cash	6,978	—	—	6,978
Total plan assets	<u>\$ 61,773</u>	<u>\$ 7,102</u>	<u>\$ —</u>	<u>\$ 68,875</u>

- (1) These investments are comprised primarily of funds invested with an insurance company in Japan with a guaranteed rate of return. The insurance company invests these assets primarily in government and corporate bonds.

15. Fair Value Measurements

Money market funds, time deposits and corporate notes/bonds are classified within Level 1 of the fair value hierarchy because they are valued based on quoted market prices in active markets.

The principal market in which we execute our foreign currency forward contracts is the institutional market in an over-the-counter environment with a relatively high level of price transparency. The market participants are generally large financial institutions. Our foreign currency derivatives' valuation inputs are based on quoted prices and quoted pricing intervals from public data sources and do not involve management judgment. These contracts are typically classified within Level 2 of the fair value hierarchy.

Our significant financial assets and liabilities measured at fair value on a recurring basis as of September 30, 2024 and 2023 were as follows:

	September 30, 2024			
	Level 1	Level 2	Level 3	Total
Financial assets:				
Cash equivalents ⁽¹⁾	\$ 48,509	\$ —	\$ —	\$ 48,509
Forward contracts	—	1,202	—	1,202
	<u>\$ 48,509</u>	<u>\$ 1,202</u>	<u>\$ —</u>	<u>\$ 49,711</u>
Financial liabilities:				
Forward contracts	—	4,166	—	4,166
	<u>\$ —</u>	<u>\$ 4,166</u>	<u>\$ —</u>	<u>\$ 4,166</u>

	September 30, 2023			
	Level 1	Level 2	Level 3	Total
Financial assets:				
Cash equivalents ⁽¹⁾	\$ 72,754	\$ —	\$ —	\$ 72,754
Convertible note	—	—	2,000	2,000
Forward contracts	—	7,340	—	7,340
	<u>\$ 72,754</u>	<u>\$ 7,340</u>	<u>\$ 2,000</u>	<u>\$ 82,094</u>
Financial liabilities:				
Forward contracts	—	3,158	—	3,158
	<u>\$ —</u>	<u>\$ 3,158</u>	<u>\$ —</u>	<u>\$ 3,158</u>

(1) Money market funds and time deposits.

Level 3 Investments

Convertible Note

In the fourth quarter of 2021, we invested \$2.0 million in a non-marketable convertible note. This debt security was classified as available-for-sale and included in Other assets on the Consolidated Balance Sheet. During the twelve months ended September 30, 2024, we recorded a \$2.0 million impairment loss related to this Level 3 investment. The impairment loss is included in Other income, net on the Consolidated Statements of Operations.

16. Derivative Financial Instruments

The following table shows our derivative instruments measured at gross fair value as reflected in the Consolidated Balance Sheets:

(in thousands)	Fair Value of Derivatives Designated As Hedging Instruments		Fair Value of Derivatives Not Designated As Hedging Instruments	
	September 30,			
	2024	2023	2024	2023
Derivative assets: ⁽¹⁾				
Forward contracts	\$ 181	\$ 3,770	\$ 1,021	\$ 3,570
Derivative liabilities: ⁽²⁾				
Forward contracts	\$ 630	\$ —	\$ 3,536	\$ 3,158

(1) As of September 30, 2024 and 2023, current derivative assets are recorded in Other current assets on the Consolidated Balance Sheets.

(2) As of September 30, 2024 and 2023, current derivative liabilities are recorded in Accrued expenses and other current liabilities on the Consolidated Balance Sheets.

Non-Designated Hedges

As of September 30, 2024 and 2023, we had outstanding forward contracts not designated as hedging instruments with notional amounts equivalent to the following:

Currency Hedged (in thousands)	September 30,	
	2024	2023
Euro / U.S. Dollar	\$ 781,398	\$ 383,227
British Pound / U.S. Dollar	24,810	6,058
Israeli Shekel / U.S. Dollar	12,535	11,852
Japanese Yen / U.S. Dollar	42,340	4,770
Swiss Franc / U.S. Dollar	74,939	32,766
Swedish Krona / U.S. Dollar	48,596	35,085
Chinese Renminbi / U.S. Dollar	32,124	16,660
New Taiwan Dollar / U.S. Dollar	16,368	11,855
All other	25,368	21,363
Total	\$ 1,058,478	\$ 523,636

The following table shows the effect of our non-designated hedges, including forward contracts and options, on the Consolidated Statements of Operations for the years ended September 30, 2024, 2023 and 2022:

(in thousands)	Location of Gain (Loss)	Year ended September 30,		
		2024	2023	2022
Net realized and unrealized gain (loss), excluding the underlying foreign currency exposure being hedged	Other income, net	\$ (6,238)	\$ (11,757)	\$ 14,603

In 2024, 2023 and 2022, foreign currency losses, net were \$1.8 million, \$2.1 million and \$0.9 million, respectively.

Net Investment Hedges

As of September 30, 2024 and 2023, we had outstanding forward contracts designated as net investment hedges with notional amounts equivalent to the following:

Currency Hedged (in thousands)	September 30,	
	2024	2023
Euro / U.S. Dollar	\$ 462,894	\$ 337,923
Japanese Yen / U.S. Dollar	10,739	10,285
Total	\$ 473,633	\$ 348,208

The following table shows the effect of our derivative instruments designated as net investment hedges on the Consolidated Statements of Operations for the years ended September 30, 2024, 2023, and 2022:

(in thousands)

	Location of Gain (Loss)	Year ended September 30,		
		2024	2023	2022
Gain (loss) recognized in OCI	OCI	\$ (21,643)	\$ (10,033)	\$ 23,379
Gain (loss) reclassified from OCI to earnings	n/a	\$ —	\$ —	\$ —
Gain recognized, excluded portion	Other income, net	\$ 4,346	\$ 4,241	\$ 1,797

As of September 30, 2024, we estimate that all amounts reported in Accumulated other comprehensive loss will be applied against exposed balance sheet accounts upon translation within the next three months.

Offsetting Derivative Assets and Liabilities

We have entered into master netting arrangements for our forward contracts that allow net settlements under certain conditions. Although netting is permitted, it is currently our policy and practice to record all derivative assets and liabilities on a gross basis in the Consolidated Balance Sheets.

The following table sets forth the offsetting of derivative assets as of September 30, 2024:

	Gross Amounts Offset in the Consolidated Balance Sheets			Gross Amounts Not Offset in the Consolidated Balance Sheets		
	Gross Amount of Recognized Assets	Gross Amounts Offset in the Consolidated Balance Sheets	Net Amounts of Assets Presented in the Consolidated Balance Sheets	Financial Instruments	Cash Collateral Received	Net Amount
As of September 30, 2024						
Forward Contracts	\$ 1,202	\$ —	\$ 1,202	\$ (1,202)	\$ —	\$ —

The following table sets forth the offsetting of derivative liabilities as of September 30, 2024:

	Gross Amounts Offset in the Consolidated Balance Sheets			Gross Amounts Not Offset in the Consolidated Balance Sheets		
	Gross Amount of Recognized Liabilities	Gross Amounts Offset in the Consolidated Balance Sheets	Net Amounts of Liabilities Presented in the Consolidated Balance Sheets	Financial Instruments	Cash Collateral Pledged	Net Amount
As of September 30, 2024						
Forward Contracts	\$ 4,166	\$ —	\$ 4,166	\$ (1,202)	\$ —	\$ 2,964

17. Leases

Our headquarters are located at 121 Seaport Boulevard, Boston, Massachusetts. The lease is for approximately 250,000 square feet and runs through June 30, 2037. We subleased a portion of the leased space through January 31, 2024. Base rent for the first year of the lease was \$11.0 million and increases by \$1 per square foot per year thereafter (\$0.3 million per year). Base rent first became payable on July 1, 2020. In addition to the base rent, we are required to pay our pro rata portions of building operating costs and real estate taxes (together, "Additional Rent"). Annual Additional Rent is estimated to be approximately \$8.0 million.

The components of lease cost reflected in the Consolidated Statements of Operations for the years ended September 30, 2024, 2023, and 2022 were as follows:

(in thousands)

	Year ended September 30,		
	2024	2023	2022
Operating lease cost	\$ 33,288	\$ 32,402	\$ 34,346
Short-term lease cost	3,691	5,411	2,653
Variable lease cost	9,919	10,945	10,095
Sublease income	(1,436)	(4,749)	(4,600)
Total lease cost	<u>\$ 45,462</u>	<u>\$ 44,009</u>	<u>\$ 42,494</u>

Supplemental cash flow information for the years ended September 30, 2024, 2023, and 2022 was as follows:

	2024	2023	2022
Cash paid for amounts included in the measurement of lease liabilities:			
Operating cash flows from operating leases	\$ 35,498	\$ 36,038	\$ 38,709
Right-of-use assets obtained in exchange for new lease obligations:			
Operating leases ⁽¹⁾	\$ 11,079	\$ 28,257	\$ 15,431

(1) In the year ended September 30, 2023, operating lease additions included \$4.0 million related to the ServiceMax acquisition.

Supplemental balance sheet information related to the leases as of September 30, 2024 and 2023 was as follows:

	2024	2023
Weighted-average remaining lease term - operating leases	10.3 years	10.9 years
Weighted-average discount rate - operating leases	5.4%	5.2%

Maturities of lease liabilities as of September 30, 2024 are as follows:

(in thousands)	Operating Leases
2025	\$ 32,256
2026	26,850
2027	21,917
2028	19,475
2029	17,518
Thereafter	120,895
Total future lease payments	238,911
Less: imputed interest	(57,157)
Total lease liability	<u>\$ 181,754</u>

18. Subsequent Events

On October 1, 2024, we entered into an amendment to our credit agreement. Prior to the amendment, if our outstanding 2025 Senior Notes had not been refinanced to mature on or after April 3, 2028 or redeemed by November 16, 2024, all amounts outstanding under the credit facility would become due and payable on November 16, 2024. After the amendment, the amount outstanding under the credit facility will not become due and payable on November 16, 2024 if on that date our total cash and cash equivalent investments, readily-marketable securities, and available revolving commitments under the credit agreement are greater than or equal to \$600 million.

(This page has been left blank intentionally.)

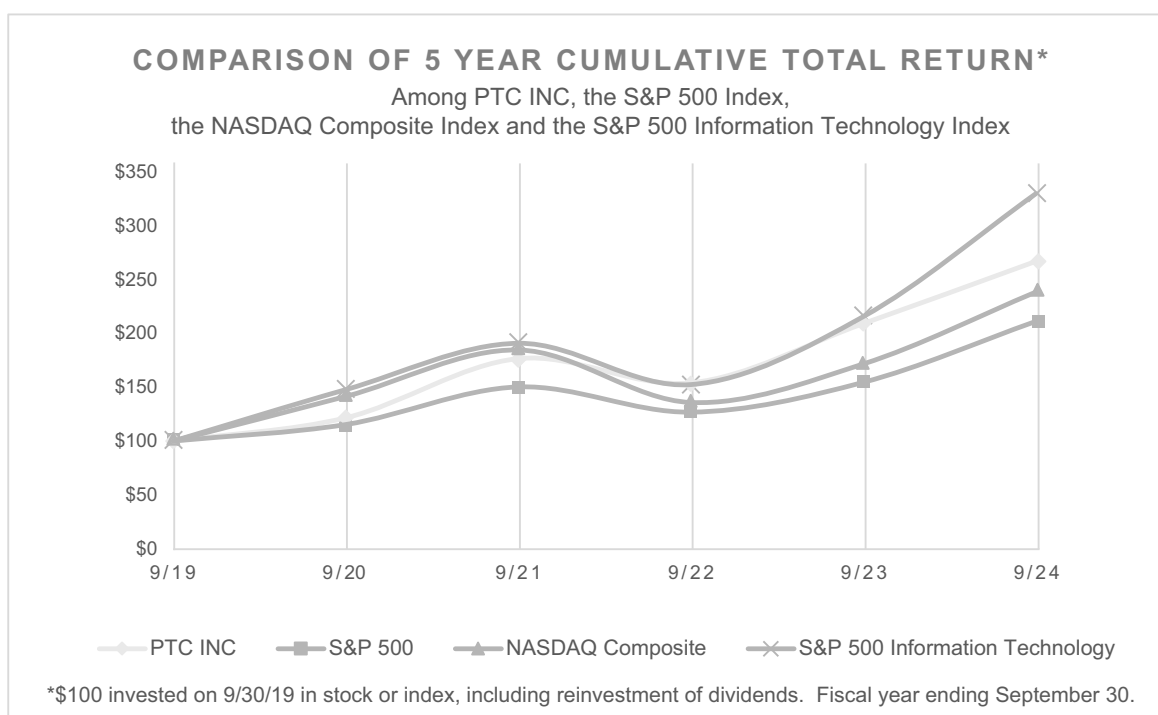
STOCK PERFORMANCE GRAPH

The Stock Performance Graph below compares the cumulative stockholder return on our common stock from September 30, 2019 to September 30, 2024 with the cumulative return over the same period of:

- the S&P 500 Index,
- the NASDAQ Composite Index, and
- the S&P 500 Information Technology Index.

The Stock Performance Graph assumes that the value of the investment in PTC common stock and each of the comparison groups was \$100 on September 30, 2019 and assumes the reinvestment of dividends. We have never declared a cash dividend on our common stock.

The stock price performance depicted in the graph below is not necessarily indicative of future stock price performance.



	9/30/2019	9/30/2020	9/30/2021	9/30/2022	9/30/2023	9/30/2024
PTC INC	100.00	121.33	175.70	153.42	207.80	264.98
S&P 500	100.00	115.15	149.70	126.54	153.89	209.84
NASDAQ Composite	100.00	140.96	183.61	135.41	170.76	236.74
S&P 500 Information Technology	100.00	147.23	189.78	151.82	214.22	327.07

(This page has been left blank intentionally.)

Directors

Janice Chaffin, Board Chair
Group President (Retired), Symantec Corporation, an enterprise cybersecurity company

Neil Barua
Chief Executive Officer, PTC Inc.

Mark Benjamin
Chief Executive Officer (Retired), Nuance Communications, an enterprise software company

Robert Bernshteyn
General Partner, ICONIQ Capital, a venture capital firm

Amar Hanspal
Chief Executive Officer, AMBR Technologies, a provider of software solutions for the building construction industry

Michal Katz
Head of Investment and Corporate Banking, Mizuho Americas, a division of Mizuho Financial Group, a financial institution

Paul Lacy
President (Retired), Kronos Incorporated, an enterprise software company

Corinna Lathan
Chief Executive Officer, De Oro Devices, a biomedical device company

Robert Schechter
Chief Executive Officer (Retired), NMS Communications Corporation, a software company

Executive Officers

Neil Barua
Chief Executive Officer and President

Kristian Talvitie
Executive Vice President, Chief Financial Officer

Robert Dahdah
Executive Vice President, Chief Revenue Officer

Aaron von Staats
Executive Vice President, General Counsel and Secretary

Shareholders and Stock Listing

Our common stock is traded on the Nasdaq Global Select Market under the symbol PTC. On September 30, 2024, our common stock was held by 875 shareholders of record.

Investor Information

You may obtain a copy of any of the exhibits to our Annual Report on Form 10-K free of charge. These documents are available on our website at www.ptc.com or by contacting PTC Investor Relations.

Requests for information about PTC should be directed to:

Investor Relations
PTC
121 Seaport Boulevard
Boston, MA 02210
Telephone: 781.370.5000
Email: investor@ptc.com

Annual Meeting

The 2025 Annual Meeting of Stockholders will be held at the time and location stated below.

Wednesday, February 12, 2025
10:00 a.m., local time

PTC Headquarters
121 Seaport Boulevard
Boston, Massachusetts 02210

Dividends

We have not paid dividends on our common stock and retain earnings for use in our business. We review our policy with respect to the payment of dividends from time to time. However, there can be no assurance that we will pay any dividends in the future.

Internet Address

www.ptc.com

Independent Accountants

PricewaterhouseCoopers LLP, Boston, Massachusetts

Transfer Agent and Registrar

Equiniti Trust Company, LLC, New York, New York



ANNUAL REPORT 2024



© 2024, PTC Inc. All rights reserved. PTC, the PTC logo, and all other PTC product names and logos are trademarks or registered trademarks of PTC and/or its subsidiaries in the United States and other countries.