

Traffic Performance February 2012



In February 2012, Finnair traffic measured in Revenue Passenger Kilometres rose by nearly 12 per cent as the overall capacity grew by approximately 8 per cent year-on-year. Passenger load factor improved by 2.6 per cent points and was 75.9 per cent. Asian traffic capacity measured in Available Seat Kilometres grew by 13.2 per cent and traffic measured in Revenue Passenger Kilometres increased by 15.4 per cent.

“Passenger load factors developed well in all scheduled traffic categories. Capacity planning and pricing campaigns were successful and we were able to fill the planes better than in the previous year. Passenger load factors improved notably especially in domestic and European traffic: Passenger load factor in domestic traffic improved by almost 9 percentage points and in Europe by nearly 8 percentage points,” says Finnair CFO Erno Hildén.

The load factor in leisure traffic declined year on year due to overcapacity in the package tour market in Finland and was 92.2 per cent.

In cargo, available tonne kilometres grew by 22.8 per cent and revenue tonne kilometres by 20.2 per cent year on year, while the load factor in cargo declined slightly to 62.1. The amount of cargo and mail carried grew by 8.1 per cent.

The arrival punctuality in February was 73.1 per cent (81.1 per cent). In scheduled traffic, 73.5 per cent (82.8 per cent) of flights arrived on schedule. Winter circumstances slowed down the operations in Helsinki-Vantaa airport, which impaired Finnair’s arrival punctuality.

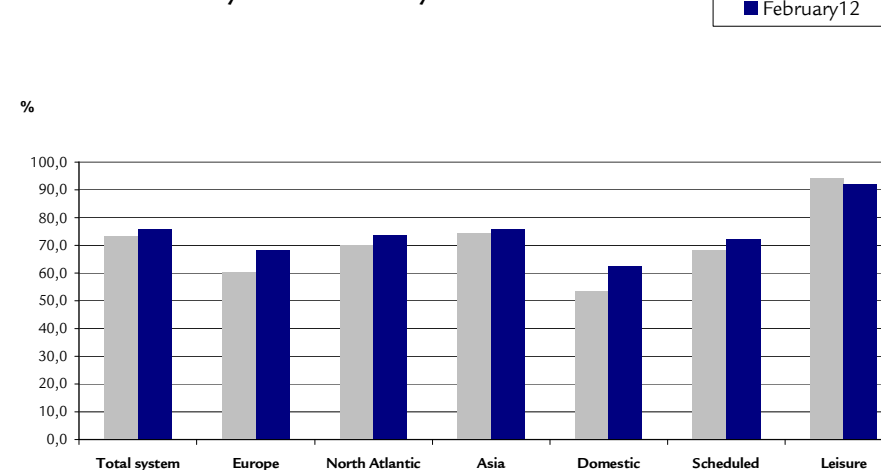
Next release on traffic statistics will be released on **10 April 2012**.

Finnair Plc.
Communications
9 March 2012

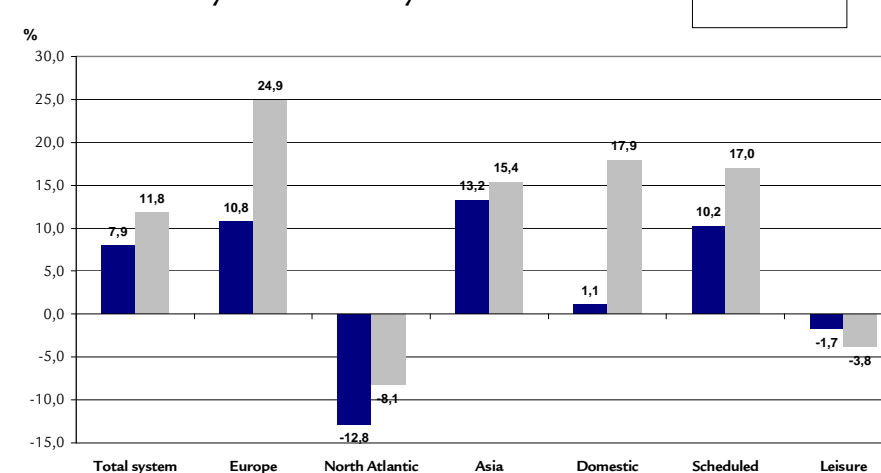
Further information:

www.finnairgroup.com | investor.relations@finnair.com | Tel. + 358 9 818 2780

**Passenger load factors by Traffic category
February 2012 vs February 2011**



**Changes in Traffic and Capacity
February 2012 vs February 2011**



Finnair Group traffic performance February 2012

	February 2012	Change %	January–February 2012	Change %
Total traffic				
Passengers, 1000	666,8	14,0	1 304,3	9,3
Available seat kilometres, mill	2 464,9	7,9	4 980,8	4,1
Revenue passenger kilometres, mill	1 870,7	11,8	3 748,6	7,7
Passenger load factor, %	75,9	2,6 p	75,3	2,5 p
Cargo tonnes	12 557,8	20,2	24 594,9	13,9
Available tonne kilometres, mill	388,5	11,8	788,8	7,2
Revenue tonne kilometres, mill	243,5	14,3	486,0	9,7
Overall load factor, %	62,7	1,4 p	61,6	1,4 p

Scheduled passenger traffic total

Passengers, 1000	599,7	17,3	1 168,4	12,3
Available seat kilometres, mill	2 031,6	10,2	4 071,0	5,6
Revenue passenger kilometres, mill	1 471,1	17,0	2 922,0	12,1
Passenger load factor, %	72,4	4,2 p	71,8	4,1 p

Europe

Passengers, 1000	315,0	21,0	618,4	15,7
Available seat kilometres, mill	646,5	10,8	1 292,9	6,4
Revenue passenger kilometres, mill	441,0	24,9	864,9	19,8
Passenger load factor, %	68,2	7,7 p	66,9	7,5 p

North Atlantic

Passengers, 1000	9,1	-8,1	20,5	-6,7
Available seat kilometres, mill	81,1	-12,8	177,8	-11,3
Revenue passenger kilometres, mill	60,0	-8,1	135,6	-6,7
Passenger load factor, %	73,9	3,7 p	76,3	3,7 p

Asia

Passengers, 1000	117,4	12,9	234,1	7,5
Available seat kilometres, mill	1 165,8	13,2	2 337,2	7,8
Revenue passenger kilometres, mill	883,7	15,4	1 762,0	10,0
Passenger load factor, %	75,8	1,4 p	75,4	1,5 p

	February 2012	Change %	January–February 2012	Change %
Finland				
Passengers, 1000	158,1	15,3	295,3	11,1
Available seat kilometres, mill	138,1	1,1	263,1	-3,3
Revenue passenger kilometres, mill	86,4	17,9	159,6	14,3
Passenger load factor, %	62,6	8,9 p	60,7	9,3 p

Leisure traffic

Passengers, 1000	67,1	-8,8	135,9	-11,2
Available seat kilometres, mill	433,3	-1,7	909,8	-2,1
Revenue passenger kilometres, mill	399,6	-3,8	826,6	-5,2
Passenger load factor, %	92,2	-2,0 p	90,9	-3,0 p

Cargo traffic

Cargo scheduled traffic total, tonnes	8 752,9	3,7	17 023,7	-0,3
- Europe, tonnes	1 639,2	-6,3	3 064,0	-12,6
- North Atlantic, tonnes	530,6	-8,7	1 150,3	-11,4
- Asia, tonnes	6 395,2	8,0	12 429,3	4,4
- Domestic, tonnes	187,9	-0,8	380,2	3,0
Cargo leisure traffic, tonnes	10,8	-79,0	18,8	-83,1
Cargo flights, tonnes	3 794,1	94,4	7 552,4	71,7
Cargo tonnes total	12 557,8	20,2	24 594,9	13,9
Available cargo tonne kilometres*, mill.	122,2	22,8	250,7	15,7
Revenue cargo tonne kilometres, mill.	75,9	20,2	150,2	14,6
Cargo load factor*, %	62,1	-1,3 p	59,9	-0,6 p
- North-Atlantic cargo load factor*, %	80,7	2,5 p	80,4	-0,6 p
- Asia cargo load factor*, %	78,3	-0,8 p	75,9	0,8 p

- * = Operational calculatory capacity
- Change %: Change compared to the figures of the respective periods in the previous year (p = percentage points)
- Available seat kilometres, ASK: Total number of seats available, multiplied by the number of kilometres flown
- Revenue passenger kilometres, RPK: Number of revenue passengers carried, multiplied by kilometres flown
- Passenger load factor: Share of revenue passenger kilometres of available seat kilometres
- Available tonne kilometres, ATK: Number of tonnes of capacity for carriage of passengers, cargo and mail, multiplied by kilometres flown
- Revenue tonne kilometres, RTK: Total revenue load consisting of passengers, cargo and mail, multiplied by kilometres flown
- Overall load factor: Share of revenue tonne kilometres of available tonne kilometres