

Company Presentation – May 2016

COMPETITIVE - SECURE - SUSTAINABLE



General Disclaimer

This document has been prepared by Graphitecorp Limited (“the Company” or “Graphitecorp”) to provide an update on the Company and its operations.

This presentation does not constitute financial product advice and does not and will not form any part of any contract for the acquisition of shares in Graphitecorp.

This presentation contains certain forward-looking statements with respect to the financial condition, results of operations and business of Graphitecorp Limited (“the Company” or “Graphitecorp”) and certain plans and objectives of the management of Graphitecorp.

Such forward-looking statements involve both known and unknown risks, uncertainties, assumptions and other important factors which are beyond the control of Graphitecorp and could cause the actual outcomes to be materially different from the events or results expressed or implied by such statements.

None of Graphitecorp, its officers, advisers or any other person makes any representation, assurance or guarantee as to the accuracy or likelihood of fulfilment of any forward-looking statements or any outcomes expressed or implied by any forward-looking statements.

The information contained in this presentation does not take into account investors investment objectives, financial situation or particular needs. Before making an investment decision, investors should consider their own needs and situation and, if necessary, seek professional advice.

To the maximum extent permitted by law, none of Graphitecorp or its related corporations, directors, employees or agents, nor any other person, accepts any liability, including, without limitation, any liability arising from fault or negligence, for any loss arising from the use of this presentation or its contents or otherwise arising in connection with it.

Overview



**Graphitecorp is the developer of the
high-grade Mount Dromedary Flake Graphite
Deposit in Queensland**

**Graphitecorp aims to become a leading
supplier of sustainable graphite
products**

**And the lowest-cost exporter of flake graphite
products in the Asia-Pacific region (ex-China)**

Investment Highlights

GROWTH	Demand for premium grade natural graphite is linked to high demand growth for li-Ion batteries, sustainable supply chains, and flame retardant building materials
HIGH GRADE	Large world class high grade flake graphite deposit confirmed – 18.8% Cg average grade within Graphitic Schist main unit of economic interest
LOW OPEX	Grade, stripping ratio, hardness, vegetation, topography and weather and existing regional transport synergies offers potential for low OPEX
LOW CAPEX	Deposit characteristics, access to existing infrastructure, topography, vegetation and lack of land use competition offers potential for low CAPEX
SECURE	As an Australian based producer Graphitecorp can offer a secure supply with low sovereign risk levels
SUSTAINABLE	Australian standards and stable political and regulatory environment
NEAR TERM	Small scale project with potential for commercial production in FY2018
EXPERIENCED	Board experienced in business development, project delivery and operations
CONTROLLED	Graphitecorp holds >80% interest in the deposit
SUPPORTED	Government supportive of new industries
JV PARTNER	Washington H. Soul Pattinson and Company Limited (ASX: SOL) (via its 100% owned subsidiary Exco Resources Limited)

Demand Drivers for Natural Graphite

Spherical Graphite (SG) – Li-Ion Batteries

- SG is a value added product derived from natural flake graphite
- Graphite (Synthetic and SG) is the active anode material in a Li-Ion battery
- SG more sustainable with significantly lower emission footprint than Synthetic
- 10-15 times more graphite than lithium in a li-Ion battery
- SG is manufactured using -100 mesh (<150 micron) flake graphite
- Global manufacturing capacity is forecast to grow by more than 300% by 2020 - Tesla, LG Chem, Samsung, BYD, FOXCONN, ATL, Boston Power, etc
- Strong demand forecast well beyond 2020 driven by EV's & energy storage

Expandable Graphite (EG) – Flame Retardant Building Materials

- EG is a value added product derived from natural flake graphite
- EG is used for heat shields/foils, flame retardant building materials, heat resistant seals and gaskets, etc
- EG is the primary market for course/large flake size +50 mesh (>300 micron)
- Demand growth for EG is high, particularly in China leading to high demand growth of course/large flake with high expandability rates

Flake Graphite Product Dynamics

- There are many characteristics of graphite product that are important and differentiate the products, qualities and price
- Graphite products are a specialty purified mineral product often tailored to specific customer requirements
- Graphite prices are mainly a function of flake size and purity
- The larger the flakes, the higher the selling price, at comparable purity
- Higher purity sells at higher prices, at same flake size
- While large flake size is a desirable attribute, many of the high value end uses are for very small particle sizes of extremely high purity material
- Large flake attracts a higher price because it is usually easier to achieve the high purity from large flake
- Crystallinity, particle shape, thermal stability, electrical resistivity, elasticity, strength, impurities, porosity, density are other important characteristics

Mineral Resource Estimate

Mineral resource estimate by Independent Expert, RungePincockMinarco

- Average 18.8% C Graphitic, up to 34% in Graphitic Schist unit of economic interest
- Flake size range of 24.5% Jumbo, 18.9 % Coarse flake size classification
- Resource estimate relates to only 25% of the mapped area of graphitic schist outcrop

Table: Mineral Resource Estimate (4% Total Graphitic Carbon Cut-off)

Domain	Type	Total Mineral Resource			Cont. Graphite kt
		Tonnage Mt	TGC %	TC %	
High Grade (>10% TGC)	Weathered	0.8	17.7	18.9	148
	Primary	4.0	19.0	19.9	768
	Sub-Total	4.9	18.8	19.7	916
Medium Grade (4 to 10% TGC)	Weathered	0.7	5.1	6.2	35
	Primary	3.6	5.5	6.4	196
	Sub-Total	4.3	5.4	6.4	232
	Total	9.1	12.5	13.5	1,147

Note:

1. Totals may differ due to rounding, Mineral Resources reported on a dry in-situ basis.
2. Flake sizes for the Mineral Resource is tabulated below.
3. The Statement of Estimates of Mineral Resources has been compiled under the supervision of Mr. Robert Dennis who is a full-time employee of RPM and a Member of the AusIMM and AIG. Mr. Dennis has sufficient experience that is relevant to the style of mineralisation and type of deposit under consideration and to the activity that he has undertaken to qualify as a Competent Person as defined in the JORC Code (2012).
4. All Mineral Resources figures reported in the table above represent estimates at 29th February, 2016. Mineral Resource estimates are not precise calculations, being dependent on the interpretation of limited information on the location, shape and continuity of the occurrence and on the available sampling results. The totals contained in the above table have been rounded to reflect the relative uncertainty of the estimate. Rounding may cause some computational discrepancies.
5. Mineral Resources are reported in accordance with the Australasian Code for Reporting of Exploration Results, Mineral Resources and Ore Reserves (The Joint Ore Reserves Committee Code – JORC 2012 Edition).
6. Reporting cut-off grade selected based on other known economically viable deposits around the world.
7. TGC = total graphitic carbon.

Mineral Resource Estimate

Table: Graphitic Schist Flake Size Distribution (>10% Total Graphitic Carbon Cut-off)

Classification	Sieve Size (µm)	% in Interval	Cumulative %
Jumbo	>300	24.5	24.5
Large	180-300	18.9	43.4
Medium	150-180	6.8	50.2
Fine	75-150	23.9	74.1
Very Fine	<75	25.9	100.0



Image: HQ diamond core – Drillhole MD-12 - Central Zone of the Mount Dromedary December 2015.

Our Graphite

- An independent leading German laboratory produced 99.93% graphite concentrate from our Mount Dromedary graphite ore (February 2016)
- The laboratory advised that the characteristics of the samples offer potential advantage to use our product as feed material for the manufacture of spherical graphite for batteries
- The laboratory also identified other commercial application possibilities for our product including:
 - Fuel cell applications
 - Additive material for plastic or rubber industries
 - Lubricants and releasing agents
 - Powder forging, alloy and sintering control in powder metallurgical industry
 - High temperature coatings
 - Other battery applications
 - Conductive plastic and polymer applications

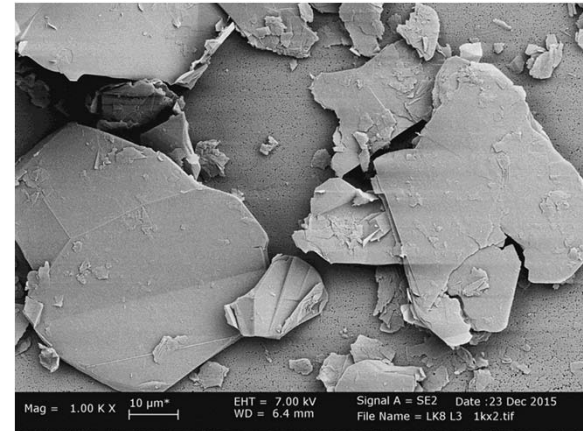


Image: SEM micrograph of graphite flotation concentrate after conventional processing and chemical processing L3; Magnification 1.000x

- While these initial results are very promising significantly more testing is required to determine optimal products from our ore and to increase confidence levels that these products can be consistently produced
- Customer qualification of the graphite product is also an important part of the commercialisation process

Infrastructure & Logistics

“Well developed transport and mining supply infrastructure to support any mining activities and transport to market”

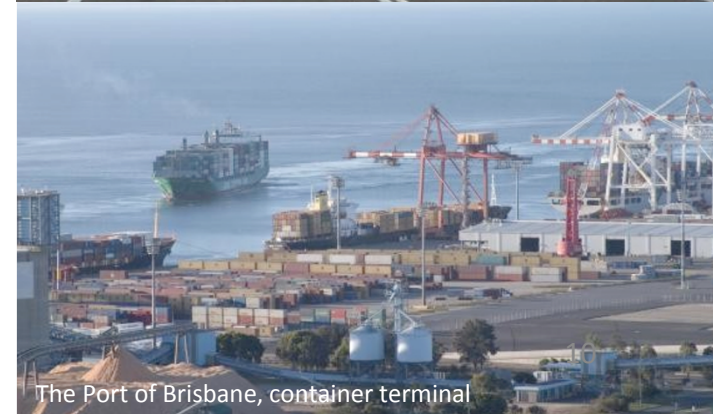
- **Sealed all-weather bitumen highway**
 - The Mount Dromedary graphite deposit is located less than 1km west of the Burke Development Road, 125km north of Cloncurry, a service centre for the regional mining sector.
- **Road haulage:**
 - Daily road-train transport to the Ports available from the Burke Development Road and the Stuart Highway via freight haulage companies.
 - Large-scale regional **back-loading** to container export terminal
- **Ports:**
 - Highway networks connect the project with the Queensland export ports of Brisbane, Townsville and Karumba.



The entrance to the Mount Dromedary Project



The Burke Development Road, south of Mount Dromedary



















The Port of Brisbane, container terminal

Board & Management

- **Tony Bellas, Chairman** – Mr Bellas is also chairman of Corporate Travel Management Ltd, ERM Power Ltd and Shine Corporate Ltd, and Deputy Chairman of Endeavour Foundation. Former Queensland Treasury Deputy Under Treasurer, and Chief Executive of CS Energy Ltd (Queensland’s then largest generator of coal-fired and gas-fired generation) and Ergon Energy Ltd (Queensland’s largest electricity distribution company and electricity retailer). He was also CEO of the Seymour group, one of Queensland’s largest privately owned investment and development companies.
- **Philip St Baker, Managing Director** – Mr St Baker was previously the Managing Director and CEO of ERM Power Limited (ASX: EPW) for eight years until October 2014 during which time the company transformed from a private power development company into one of Australia’s fastest growing diversified energy companies. Prior to joining ERM Power, Philip had a 16-year career with BHP Billiton gaining diverse international experience in the resources sector including mining, processing, smelting, and refining.
- **Greg Baynton, Executive Director** – Mr Baynton has been a Director of Australian exploration companies for over 17 years, with additional experience in investment banking, merchant banking, infrastructure investment, IPOs, public company directorships, Queensland Treasury, and the Department of Mines and Energy. He founded Graphitecorp in 2012 and is also currently a non-executive director of Superloop Limited and an executive director of Orbit Capital.
- **Martin Ebeling, Market & Technical Adviser** – Mr Ebeling was CEO and CFO of Graphit Kropfmuhl AG/AMG Mining AG for 15 years until 2012. An independent advisor since 2013, he has a deep knowledge of graphite applications in global markets along with a strong understanding of mining, processing and purification techniques. Former Director of Bogala Graphite Lanka PLC, a subsidiary of Graphit Kropfmuhl and world’s largest miner of vein graphite. He was also a Director of Zimbabwe German Graphite Mines Ltd, the owner of the Lynx Graphite Mine in Zimbabwe. He is a founding director of Qingdao Kropfmuehl Graphite Co.,Ltd. in the Shandong Province of China. He has visited China on graphite-related business more than 70 times in the past 15 years.

FY2016 Highlights

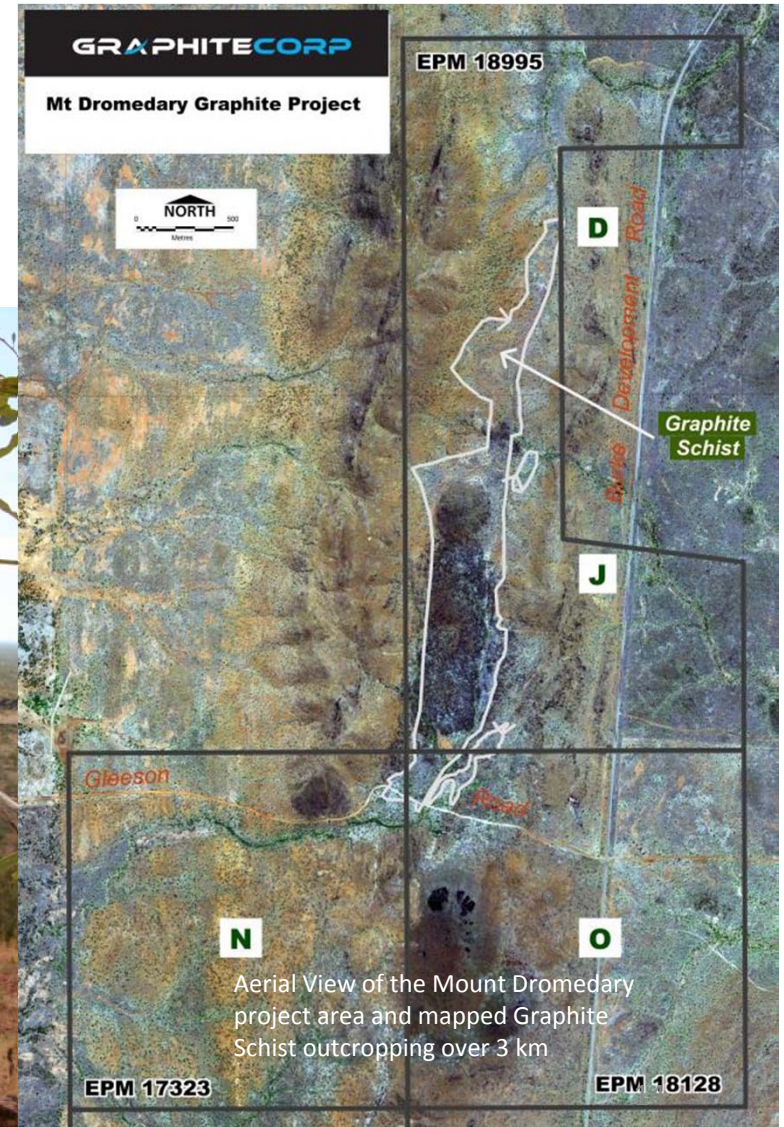
- Private capital raising for conceptual assessment 
- Maiden Drilling Program completed and deposit verified 
- Farm-in obligations fulfilled and mineral rights earned 
- Maiden Independent Inferred Mineral Resource Estimate achieved 
- Private capital raising to commence Phase 2 Drilling Program 
- Successful IPO capital raising to fund feasibility assessment 
- Phase 2 Drilling Program completed ahead of schedule 
- World class high grade flake graphite deposit confirmed 
- Maiden Independent Measures and Indicated Mineral Resource Estimate 
- Purification tests confirm capability to upgrade > 99.9+% 
- Concentrate suitability as feed for Li-Ion battery market confirmed 
- Initial market review & soundings completed in China and Japan 
- Formalised long form JV, Management and Marketing agreements 
- Conceptual mining study completed and economic model updated 
- Wet season environmental survey completed 
- Meetings with potential customers in Asia 

Next Steps

- Additional metallurgical testing
- Secondary processing trials
- Products development
- Customer testing and qualification
- Mining design and optimisation
- Processing design and optimisation
- Infrastructure design and optimisation
- Logistics design and optimisation
- Mining and other approval processes
- Engineering and procurement processes
- Construction and operations planning
- Market modelling and forecasting
- Risk assessment and de-risking
- Project funding
- Economic modelling
- Final investment decision processes

The Valley of Graphite

Questions?



About Us

Graphitecorp (ASX: GRA) is a developer of one of the highest-grade flake graphite deposits in the world, located in Australia, and referred to as the Mount Dromedary Project.

The deposit includes a large high grade "Graphite Schist" mineralisation zone averaging 18.8% TGC (up to 35% TGC) with large flake size distribution being 43% jumbo to large flake size and outcropping over a strike-length of at least 3km with a variable width between 35m and 350m.

Graphitecorp has an 82% effective interest in the deposit, based on currently mapped surface area, with the remaining interest held by the Company's joint venture partner Washington H. Soul Pattinson and Company Limited (ASX: SOL) subsidiary Exco Resources Limited.

The project is favourably located 125km north of Cloncurry with well-developed transport and mining supply infrastructure available.

- Located in Australia with low levels of sovereign risk, ability to provide long term security of supply, alternate sourcing to China and Africa, and higher environmental and other sustainability related standards
- Large open-cut deposit located within one kilometre of a sealed all-weather bitumen highway maintained by the State Government and gazetted for use by road-trains
- Daily road-train transport to the Ports available from major freight haulage companies with large-scale backhaul capacity
- Highway networks connect the project with Queensland export ports including the Port of Brisbane which is regularly serviced by major shipping liners and has back-haul capacity to target markets; and
- Located in a well-established mining region with abundant skills, services and experience, and playing a significant role in the Queensland economy.
- Given strong project fundamentals and positive demand outlook for specialised graphite products, Graphitecorp is diligently progressing a feasibility study with its joint venture partner to assess the economic opportunity of establishing a business to mine, process, manufacture and market high quality graphite products into Asian and other global markets.

Contact Details

Philip St Baker
Managing Director
Graphitecorp Limited

GPO Box 525
Brisbane QLD 4001
AUSTRALIA

+61 0438 173 330
phil@graphitecorp.com.au

Greg Baynton
Executive Director
Graphitecorp Limited

GPO Box 525
Brisbane QLD 4001
AUSTRALIA

+61 414 970 677
greg@graphitecorp.com.au