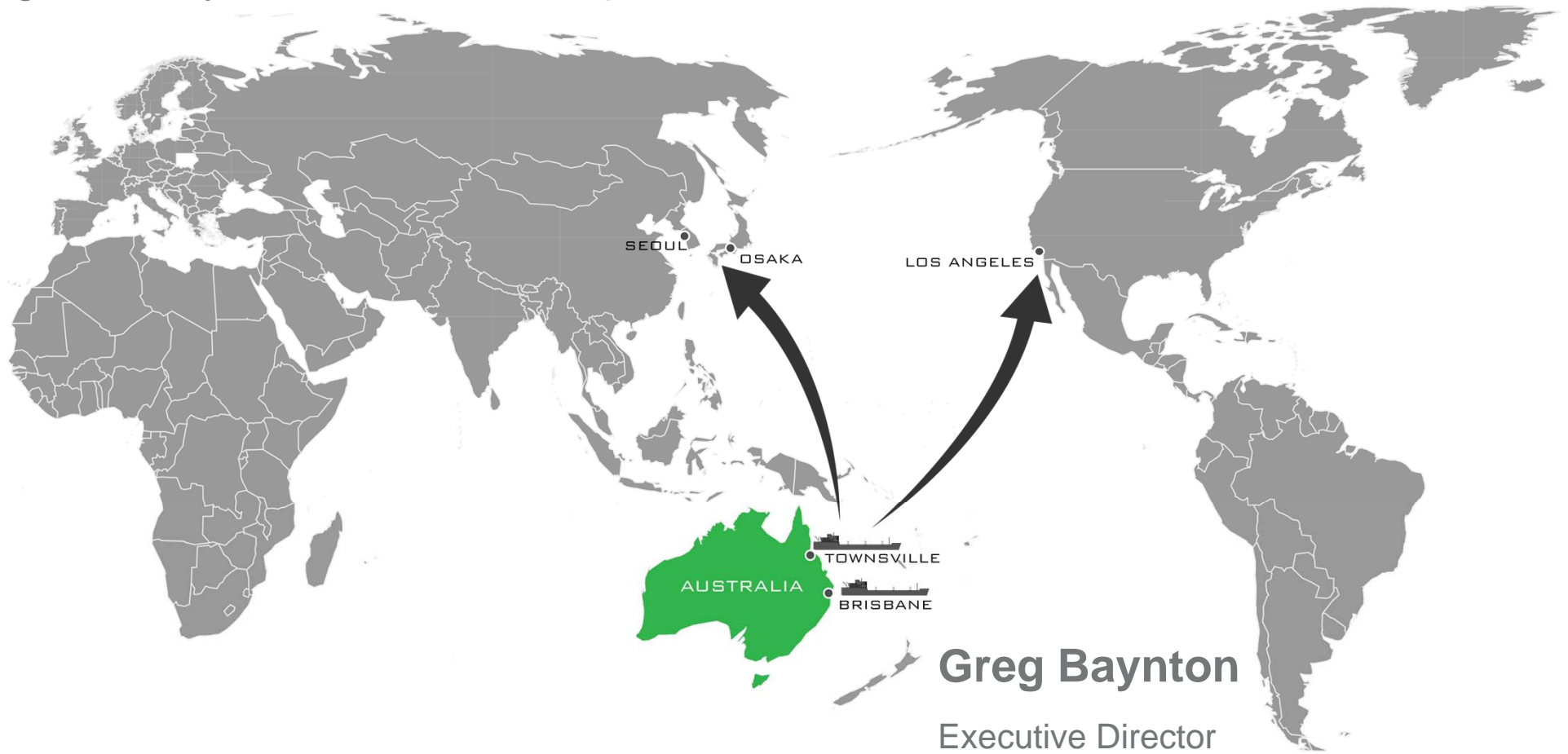


Digging Deeper Conference

Geological Survey of Queensland 19 August 2016

GRAPHITECORP
Purified Australian Graphite



Greg Baynton
Executive Director

General Disclaimer

This document has been prepared by Graphitecorp Limited (“the Company” or “Graphitecorp”) to provide an update on the Company and its operations.

This presentation does not constitute financial product advice and does not and will not form any part of any contract for the acquisition of shares in Graphitecorp.

This presentation contains certain forward-looking statements with respect to the financial condition, results of operations and business of Graphitecorp Limited (“the Company” or “Graphitecorp”) and certain plans and objectives of the management of Graphitecorp.

Such forward-looking statements involve both known and unknown risks, uncertainties, assumptions and other important factors which are beyond the control of Graphitecorp and could cause the actual outcomes to be materially different from the events or results expressed or implied by such statements.

None of Graphitecorp, its officers, advisers or any other person makes any representation, assurance or guarantee as to the accuracy or likelihood of fulfilment of any forward-looking statements or any outcomes expressed or implied by any forward-looking statements.

The information contained in this presentation does not take into account investors investment objectives, financial situation or particular needs. Before making an investment decision, investors should consider their own needs and situation and, if necessary, seek professional advice.

To the maximum extent permitted by law, none of Graphitecorp or its related corporations, directors, employees or agents, nor any other person, accepts any liability, including, without limitation, any liability arising from fault or negligence, for any loss arising from the use of this presentation or its contents or otherwise arising in connection with it.

Australian Graphite for the World



We aim to become a leading supplier of sustainable graphite products, and the lowest-cost exporter of flake graphite products in the Asia-Pacific region (ex-China)

Mount Dromedary Graphite Product Opportunities

- Graphite for Li-Ion battery applications
 - Electric Vehicles
 - Home energy storage
 - Grid-scale energy storage
 - Mobile devices
- Supplying fuel cells and renewable energy
- Additive for plastics and rubber
- Conductive plastic and polymer applications
- Lubricants and releasing agents
- High temperature coatings / fire retardants
- Recarburiser applications

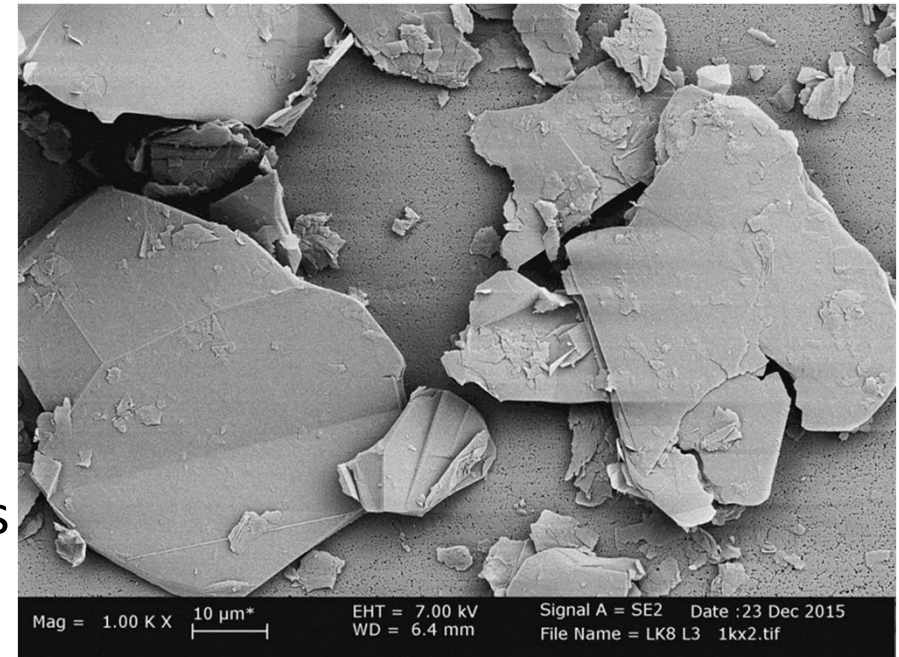


Image: SEM micrograph of graphite flotation concentrate after conventional processing and chemical processing L3; Magnification 1.000x

Project Background

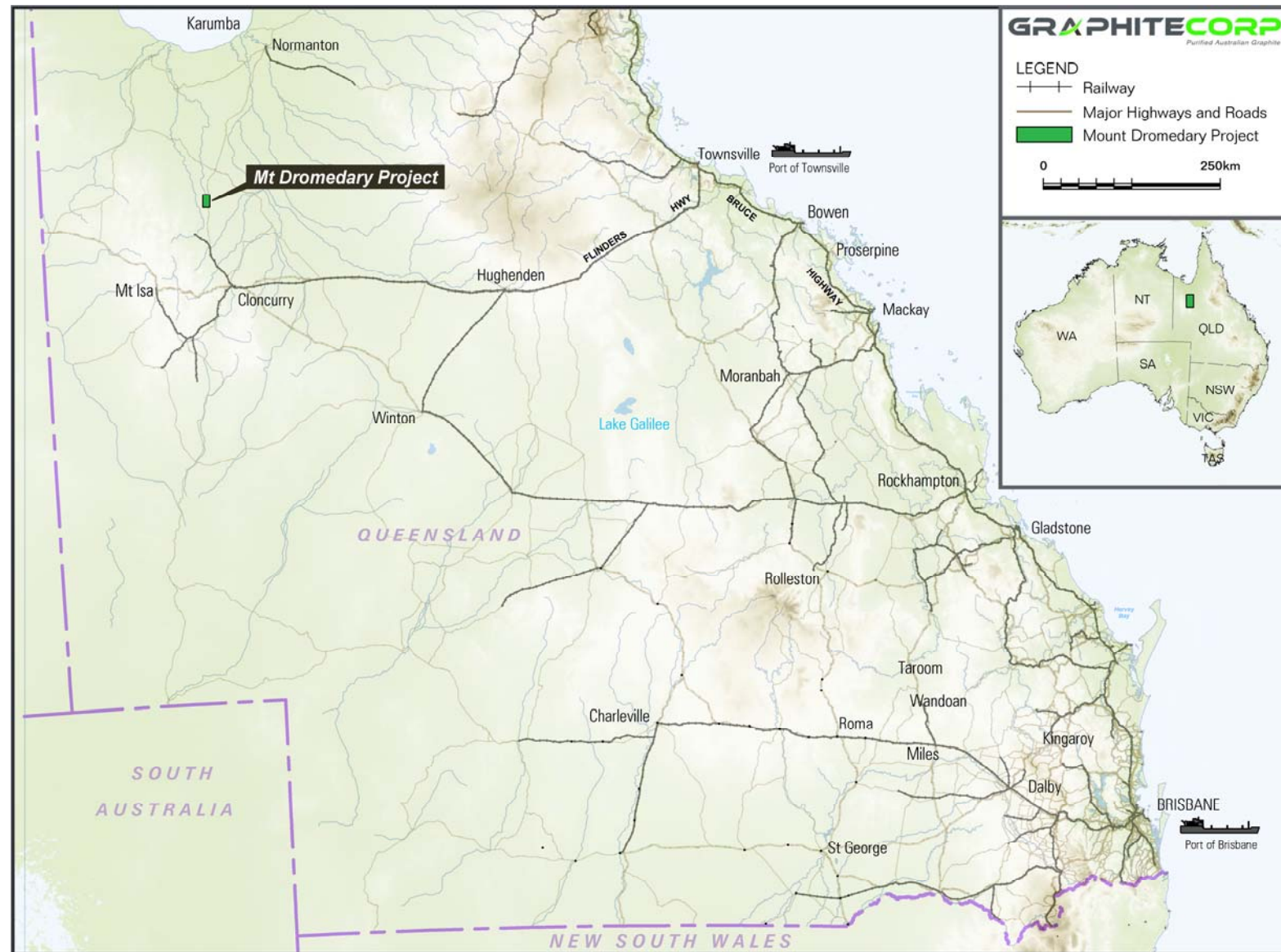
- Graphitecorp (**ASX: GRA**) has been exploring the high-grade Mount Dromedary Graphite Project, located 125 km north of Cloncurry in Queensland, Australia since 2014
- Project progressing towards feasibility and development after completing three drilling programs and major testwork program
- Drilling at Mount Dromedary has been funded during 2015 through:
 - Founder, seed and pre-IPO equity capital
 - Queensland GSQ Competitive Drilling Initiative (CDI) Grant co-funding six cored holes
 - IPO on the ASX during November 2015 (listing on ASX on 1 December)
 - Joint Venture with Washington H. Soul Pattinson and Company (**ASX: SOL**) 100% subsidiary Exco Resources Limited

Advantages of Queensland

- World-class mineral endowment
- Supportive Queensland Government agencies
- Low Sovereign Risk relative to other major international mineral endowment provinces
- Abundant technical and mining support
- Skilled and experienced local workforce for exploration and mining activities
- Ability to arrive at site same-day from all cities in Queensland
- Excellent road, rail and export port infrastructure
- Ample sea container back-loading opportunities from the Port of Brisbane to Asia and other destinations

Location & Access

- Well-developed transport and mining supply infrastructure available
- No additional road, rail or port infrastructure required, minimising project CAPEX and lead-time



Infrastructure & Logistics

“Well developed transport and mining supply infrastructure to support any mining activities and transport to market”

- **Sealed all-weather bitumen highway**
 - The Mount Dromedary graphite deposit is located less than 1km west of the Burke Development Road, 125km north of Cloncurry, a service centre for the regional mining sector.
- **Road haulage:**
 - Daily road-train transport to the Ports available from the Burke Development Road and the Stuart Highway via freight haulage companies.
 - Large-scale regional **back-loading** to container export terminal
- **Rail Network:**
 - Excellent rail network from Cloncurry direct into Townsville Container Port Terminal
- **Ports:**
 - Highway networks connect the project with the Queensland export ports of Brisbane, Townsville and Karumba.



The entrance to the Mount Dromedary Project



The Burke Development Road, south of Mount Dromedary



The Port of Brisbane, container terminal

Exploration and Drilling Summary

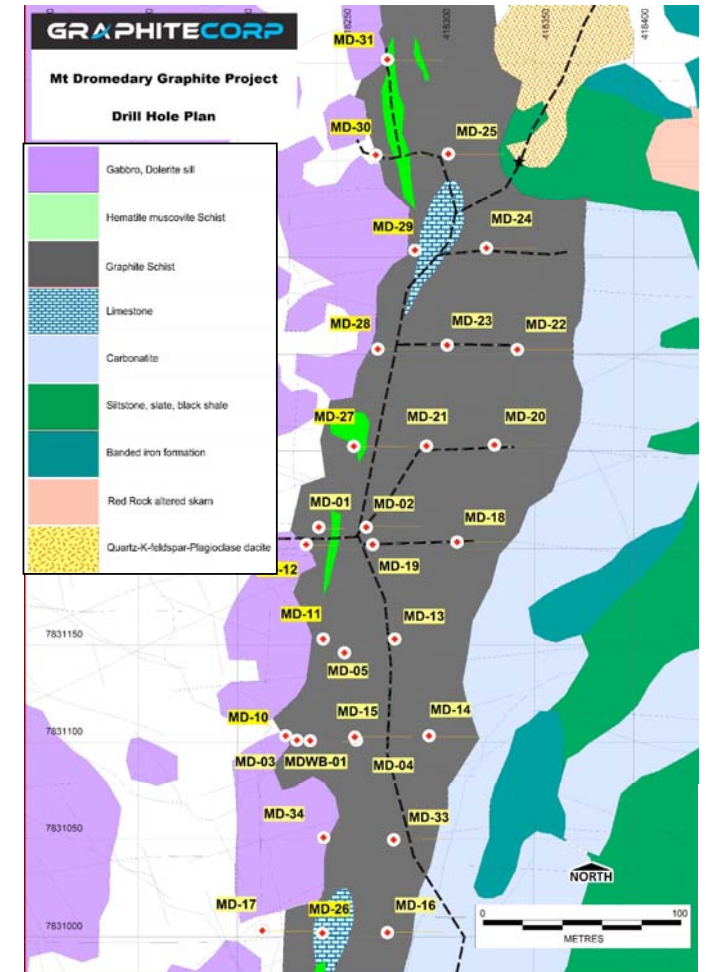
- High-grade graphite schist outcrops over 3km (up to 300m wide) at the Mount Dromedary Graphite Project
- CDI Grant involved co-funding of six (6) diamond holes in three lines (up to 150m deep) – included within the Phase 2 Drilling Program
- Phase 2 Drilling Program confirmed the presence of significant flake graphite over the entire 500m strike length tested.
- Three (3) graphite schist horizons containing high-grade (>10% Cg) graphite were intersected over 500m, dipping 50° to the west
- Cg grades exceeded 20% in a number of significant intersections
- Graphite mineralisation remained open at depth and along strike to the north and south

Phase 2 Drilling Program

- Nov-Dec 2015
- **9 Diamond Core holes**
- **17 RC holes**
- Testing 500m strike length of the Central Graphite Zone



Aerial view looking north of the Central Graphite Zone at the Mount Dromedary Graphite Project (helicopter flight courtesy of the Keats Family Pastoral Company Pty Ltd)



Drill Hole Location & Geological Map, Central Zone, Mount Dromedary Graphite Project. HQ diamond core holes are highlighted in yellow

Mineral Resource Estimate

Mineral resource estimate by Independent Expert, RungePincockMinarco (*expansion modelling currently underway*):

- Average 18.8% C Graphitic, up to 34% in Graphitic Schist unit of economic interest
- Flake size range of 24.5% Jumbo, 18.9 % Coarse flake size classification
- Resource estimate relates to only 25% of the mapped area of graphitic schist outcrop

Table: Mineral Resource Estimate (4% Total Graphitic Carbon Cut-off)

Domain	Type	Total Mineral Resource			Cont. Graphite kt
		Tonnage Mt	TGC %	TC %	
High Grade (>10% TGC)	Weathered	0.8	17.7	18.9	148
	Primary	4.0	19.0	19.9	768
	Sub-Total	4.9	18.8	19.7	916
Medium Grade (4 to 10% TGC)	Weathered	0.7	5.1	6.2	35
	Primary	3.6	5.5	6.4	196
	Sub-Total	4.3	5.4	6.4	232
	Total	9.1	12.5	13.5	1,147

Note:

1. Totals may differ due to rounding. Mineral Resources reported on a dry in-situ basis.
2. Flake sizes for the Mineral Resource is tabulated below.
3. The Statement of Estimates of Mineral Resources has been compiled under the supervision of Mr. Robert Dennis who is a full-time employee of RPM and a Member of the AusIMM and AIG. Mr. Dennis has sufficient experience that is relevant to the style of mineralisation and type of deposit under consideration and to the activity that he has undertaken to qualify as a Competent Person as defined in the JORC Code (2012).
4. All Mineral Resources figures reported in the table above represent estimates at 29th February, 2016. Mineral Resource estimates are not precise calculations, being dependent on the interpretation of limited information on the location, shape and continuity of the occurrence and on the available sampling results. The totals contained in the above table have been rounded to reflect the relative uncertainty of the estimate. Rounding may cause some computational discrepancies.
5. Mineral Resources are reported in accordance with the Australasian Code for Reporting of Exploration Results, Mineral Resources and Ore Reserves (The Joint Ore Reserves Committee Code – JORC 2012 Edition).
6. Reporting cut-off grade selected based on other known economically viable deposits around the world.
7. TGC = total graphitic carbon.

Phase 3 Drilling Program

- Completed July 2016
- Phase 3 focused on in-fill drilling between the Phase 1 and 2 drilling plus step-out drilling
- Encountered significant high-grade graphite intersections
 - High-grade graphite intersections up to 92m, open at depth
- Step-out drilling of exploration and water monitoring boreholes up to 200m away during Phase 3 also encountered significant graphite
- Core samples have been dispatched for assays and testwork
- Expanded JORC Resource estimate will be prepared from these results and announced in the coming months



Drill Core Samples of Graphitic Schist - Mount Dromedary Graphite Project.

Typical Core Photographs



Image: HQ diamond core – Graphite Schist from Drillhole MD-12
- Central Zone of the Mount Dromedary December 2015.



Image: HQ diamond core – Graphite Schist from Drillhole MD-13 - Mount Dromedary. Photo courtesy of F. Von Gnielinski, GSQ, 2016.

Project Status

- Concept Study completed
- Preliminary Economic Assessment completed
- Pre-feasibility Study completion expected before end November 2016
- Bankable Feasibility Study completion expected before end June 2017
- Product shipping potential from July 2018

	FY2015				FY2016				FY2017			
	Q1	Q2	Q3	Q4	Q1	Q2	Q3	Q4	Q1	Q2	Q3	Q4
Mapping												
Concept study												
Drilling and resource modelling												
Metallurgical test work												
Preliminary market assessment												
Pre-feasibility study												
Environmental study and permitting												
Mining study and licencing												
Infrastructure and logistics												
Marketing/off-take												
Definitive feasibility study												

Investment Summary

DEMAND	Linked to battery demand from mega trends in electric vehicles, renewable energy, mobile phones, cordless devices and equipment
HIGH GRADE	Large world class high grade flake graphite deposit – 18.8% Cg average within Graphitic Schist main unit of economic interest
LOW OPEX	Grade, stripping ratio, hardness, vegetation, topography, weather and existing transport synergies offers potential for low OPEX
LOW CAPEX	Deposit, existing infrastructure, topography, vegetation and lack of land use competition offers potential for low CAPEX
SECURE	As an Australian based producer Graphitecorp can offer a secure supply with low sovereign risk levels
SUSTAINABLE	Australian standards and stable political and regulatory environment
NEAR TERM	Small scale project with potential for commercial production in FY2018
EXPERIENCED	Board experienced in business development, project delivery and operations
CONTROLLED	Graphitecorp holds >80% interest in the deposit
SUPPORTED	Government supportive of new industries
JV PARTNER	Washington H. Soul Pattinson and Company Limited (ASX: SOL) (via its 100% owned subsidiary Exco Resources Limited)

Thank You



19 August 2016

ASX: GRA



16

Contact Details

Philip St Baker
Managing Director
Graphitecorp Limited

**GPO Box 525
Brisbane QLD 4001
AUSTRALIA**

**+61 0438 173 330
phil@graphitecorp.com.au**

Greg Baynton
Executive Director
Graphitecorp Limited

**GPO Box 525
Brisbane QLD 4001
AUSTRALIA**

**+61 414 970 677
greg@graphitecorp.com.au**