

Annual Meeting of Shareholders

November 21, 2006



Celebrating 50 years in the Community



Fiscal Year 2006 Highlights

- ✓ Record net income of \$20.5 million, or \$2.98 per share, up 13% from the same period last year.
- ✓ The sale of a commercial building with a gain of \$3.6 million, net of statutory taxes.
- ✓ Opening of PBM offices in Carlsbad and Vista, California.
- ✓ Signed a lease agreement for a new retail banking office in the La Sierra area of Riverside (Winter 2006).
- ✓ Reorganization of Mortgage Banking Division, including the closing of Fullerton office in January 2006.



Fiscal Year 2006 Highlights

- ✓ Signed a Purchase and Sale Agreement to sell approximately 6 acres of land in Riverside.
- ✓ Completed the June 2005 stock repurchase program and approved the May 2006 Program.
- ✓ Established the Provident Savings Bank Charitable Foundation in June 2006.

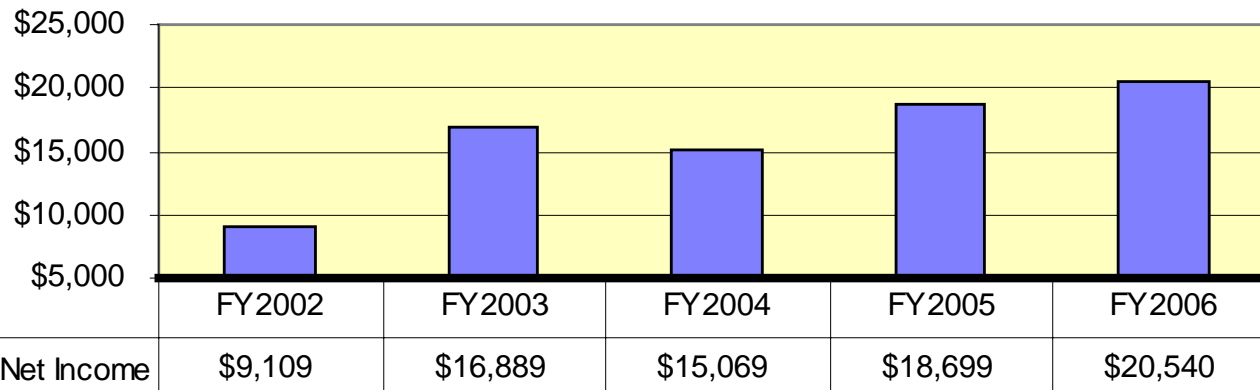


Subsequent Events

- ✓ Completed the sale of approximately 6 acres of land in Riverside with a gain of \$1.3 million, net of statutory taxes.
- ✓ Signed a lease agreement for a new retail banking office in Moreno Valley - Iris Avenue (Fall 2007) and opened a new PBM wholesale office in Pleasanton, California.
- ✓ Announced quarterly cash dividend of \$0.18 per share in October 2006, an increase of 20%.

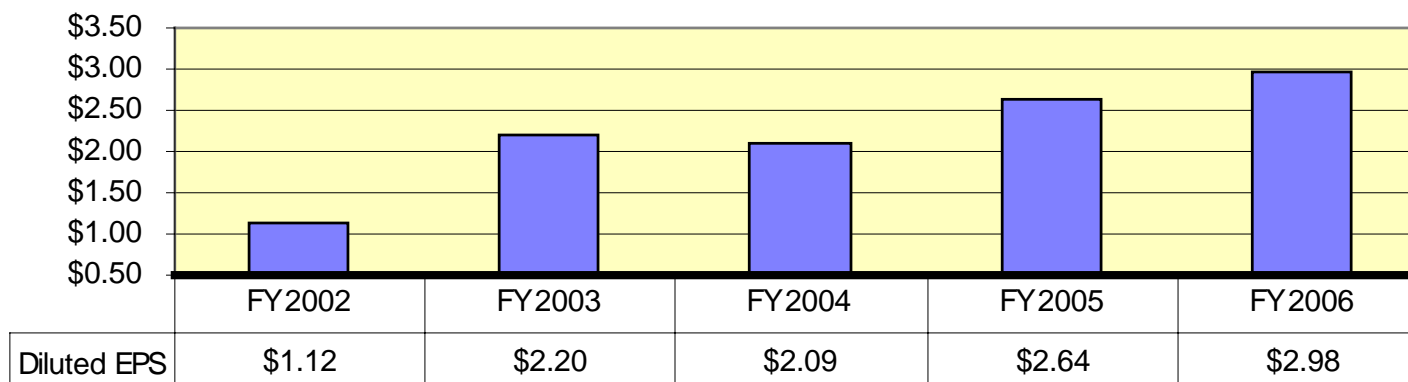
Net Income

Net Income (In Thousands)



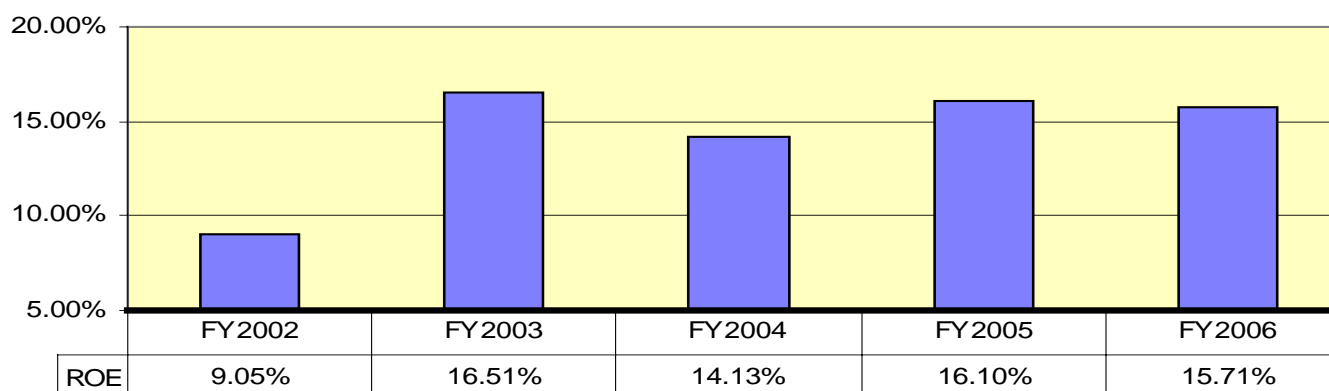
Diluted Earnings Per Share

Diluted Earnings Per Share (EPS)



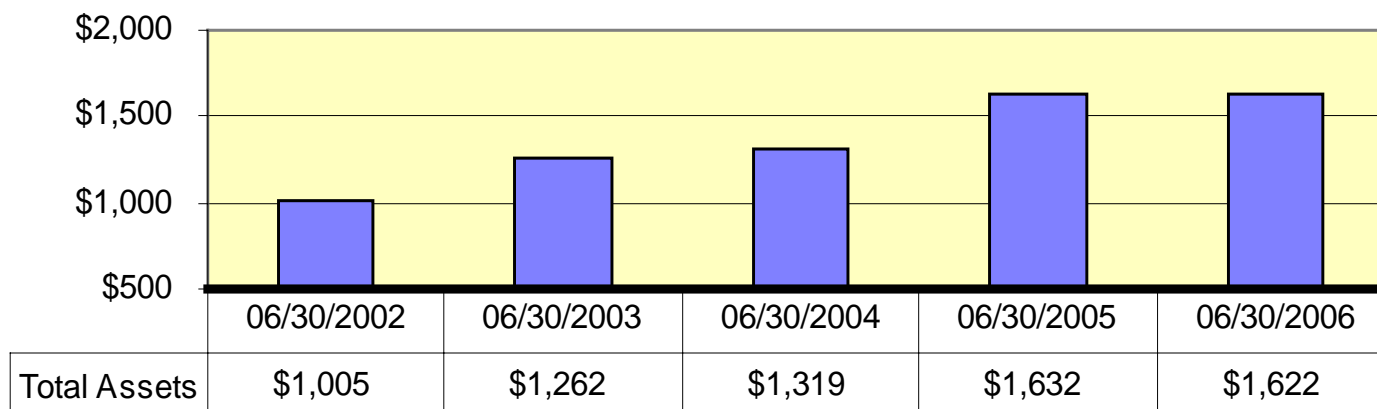
Return on Stockholders' Equity

**Return On Average Stockholders' Equity
(ROE)**



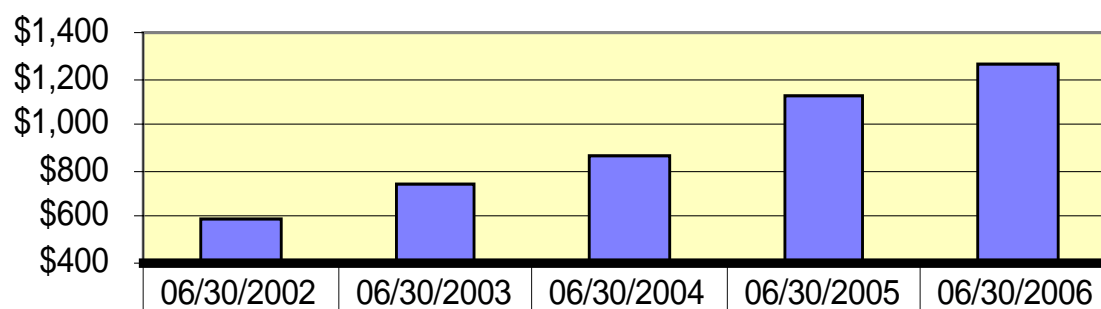
Total Assets

Total Assets (In Millions)



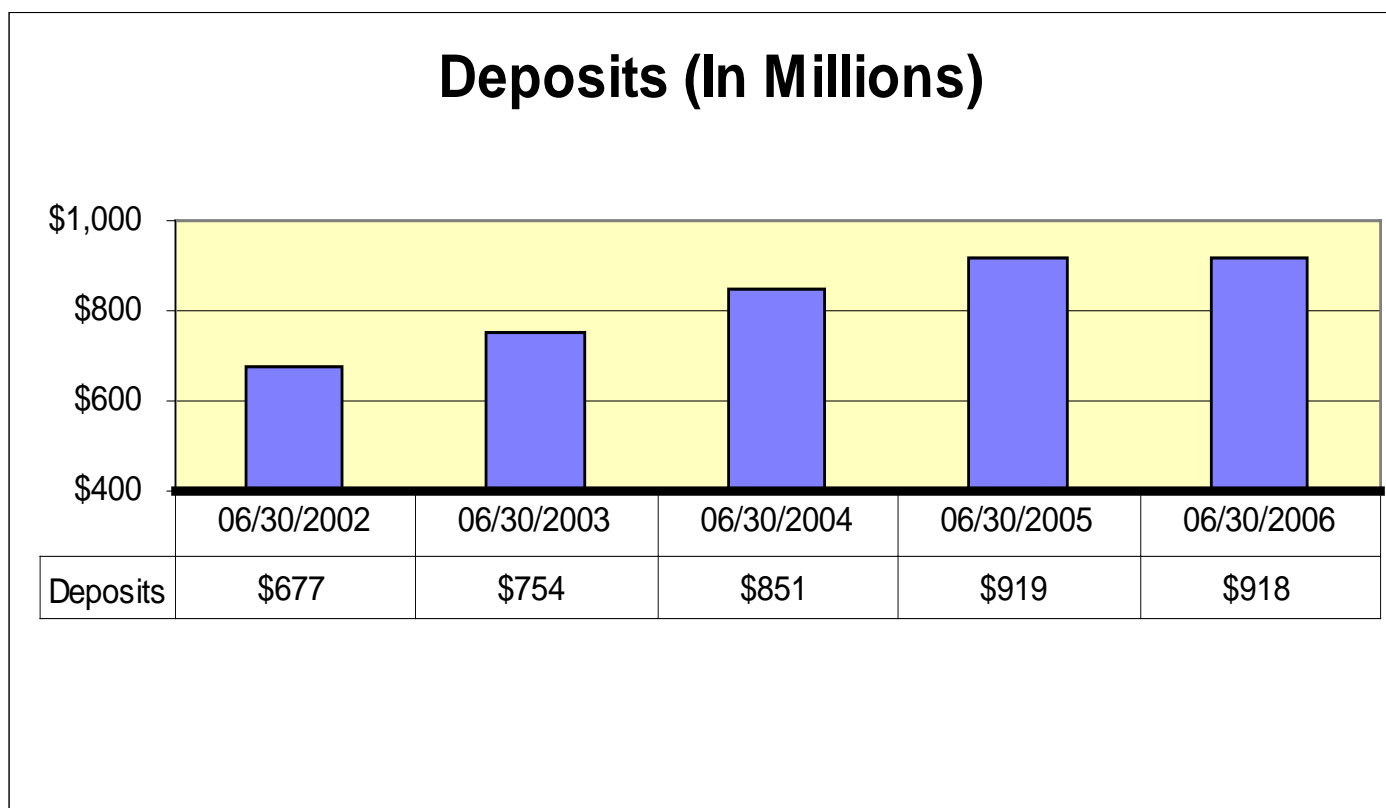
Loans Held For Investment

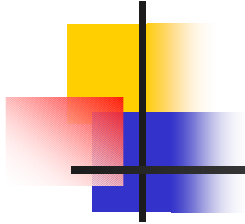
Loans Held For Investment (In Millions)



Loans Held For Investment	\$594	\$744	\$863	\$1,132	\$1,263
---------------------------	-------	-------	-------	---------	---------

Total Deposits

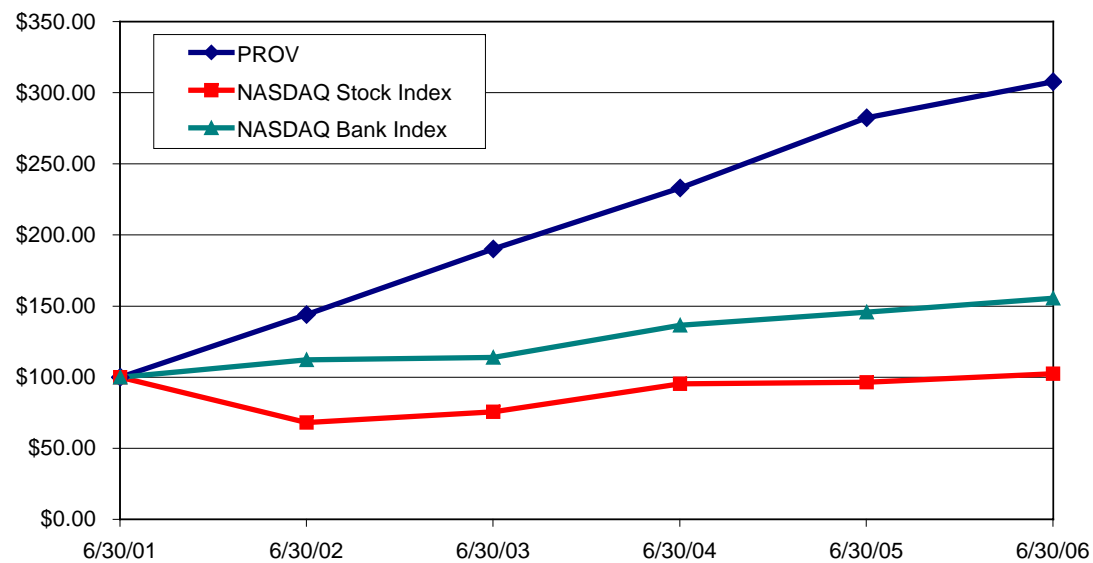




Stock Performance

(Compared to NASDAQ and NASDAQ Bank Indices)

COMPARISON OF CUMMULATIVE TOTAL RETURNS*



	6/30/01	6/30/02	6/30/03	6/30/04	6/30/05	6/30/06
PROV	\$100.00	\$144.10	\$190.15	\$233.03	\$282.36	\$307.69
NASDAQ Stock Index	\$100.00	\$68.12	\$75.63	\$95.33	\$96.36	\$102.50
NASDAQ Bank Index	\$100.00	\$112.20	\$113.88	\$136.48	\$145.73	\$155.55