

PHOTOCURE ASA

Corporate Presentation
January 2019

Daniel Schneider, President and CEO



THE
BLADDER CANCER
COMPANY™

DISCLAIMER

By reading this company presentation (the “Presentation”), or attending any meeting or oral presentation held in relation thereto, you (the “Recipient”) agree to be bound by the following terms, conditions and limitations.

The Presentation has been produced by Photocure (the “Company”) for information purposes only and does not in itself constitute, and should not be construed as, an offer to sell or a solicitation of an offer to buy any securities of the Company in any jurisdiction. The distribution of this Presentation may be restricted by law in certain jurisdictions, and the Recipient should inform itself about, and observe, any such restriction. Any failure to comply with such restrictions may constitute a violation of the laws of any such jurisdiction.

The Recipient acknowledge that it will be solely responsible for its own assessment of the Company, the market and the market position of the Company and that it will conduct its own analysis and be solely responsible for forming its own view of the potential future performance of the Company’s business. The Company shall not have any liability whatsoever (in negligence or otherwise) arising directly or indirectly from the use of this Presentation or its contents, including but not limited to any liability for errors, inaccuracies, omissions or misleading statements in this Presentation, or violation of distribution restrictions.

An investment in the Company involves significant risk, and several factors could adversely affect the business, legal or financial position of the Company or the value of its securities. For a description of relevant risk factors we refer to the Company’s annual report for 2017. Should one or more of these or other risks and uncertainties materialize, actual results may vary significantly from those described in this Presentation. An investment in the Company is suitable only for investors who understand the risk factors associated with this type of investment and who can afford a loss of all or part of their investment.

This Presentation contains certain forward-looking statements relating to inter alia the business, financial performance and results of the Company and the industry in which it operates. Any forward-looking statements contained in this Presentation, including assumptions, opinions and views of the Company or cited from third party sources, are solely opinions and forecasts and are subject to risks, uncertainties and other factors that may cause actual results and events to be materially different from those expected or implied by the forward-looking statements. The Company cannot provide any assurance that the assumptions underlying such forward-looking statements are free from errors nor do any of them accept any responsibility for the future accuracy of opinions expressed in this Presentation or the actual occurrence of forecasted developments.

This Presentation speaks as at the date set out on herein. Neither the delivery of this Presentation nor any further discussions of the Company shall, under any circumstances, create any implication that there has been no change in the affairs of the Company since such date. The Company does not assume any obligation to update or revise the Presentation or disclose any changes or revisions to the information contained in the Presentation (including in relation to forward-looking statements).

This Presentation is subject to Norwegian law, and any dispute arising in respect of this Presentation is subject to the exclusive jurisdiction of Norwegian courts.

PHOTOCURE AT A GLANCE

Norwegian **commercial-stage company** focused on bladder cancer

Own **commercial operations** in Nordics and USA. **Partners** in Europe, Canada, Australia and New Zealand

CORE DRUG-DEVICE PRODUCT ON MARKET

HEXVIX[®]
Hexaminolevulinate 85mg

CYSVIEW[®]
Hexaminolevulinate HCl

Bladder cancer detection & management

UNIQUE Photocure Technology[®] Platform

Highly selective, effective and minimally invasive

Used for diagnosis and treatment

Accelerating revenue growth

**+20% total
revenue growth
9 months '18**

OSLO (HQ)

PRINCETON, NJ

70

EMPLOYEES
Of which **40** in US

OSLO BØRS

OSLO STOCK EXCHANGE

IPO: May 2000

Market cap: >\$100M

Avg Daily Vol 2018: 141K

STRATEGIC FOCUS ON TRANSFORMING BLADDER CANCER DETECTION AND MANAGEMENT

Profitable commercial franchise

Hexvix®/Cysview® ~\$30M global in-market sales (FY'17)

Strong competitive position

Unique and complex drug-device procedure
Leading regulatory, manufacturing & commercial expertise

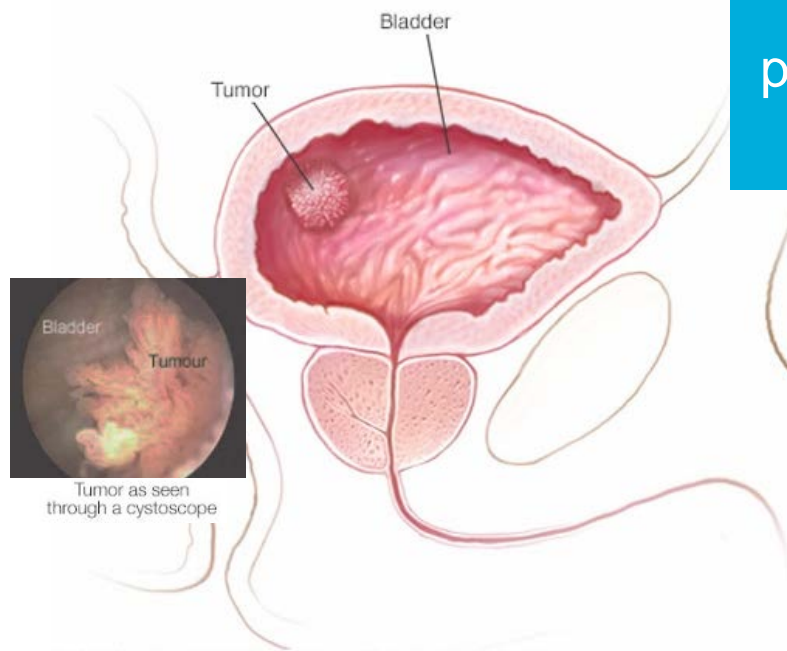
Significant growth prospects

Grow in existing markets & expand into new regions
Label extension addressing larger market opportunity

Leverage commercial operations

Scalable for partnerships and in-licensing opportunities

NMI BLADDER CANCER IS ONE OF THE MOST COMMON CANCERS WITH SIGNIFICANT RECURRENCE RATE AND HIGH DISEASE BURDEN



~600K surgical procedures annually in USA and EU

~2.2M surveillance cystoscopies annually in USA and EU

50% disease recurrence

10%-30% disease progression

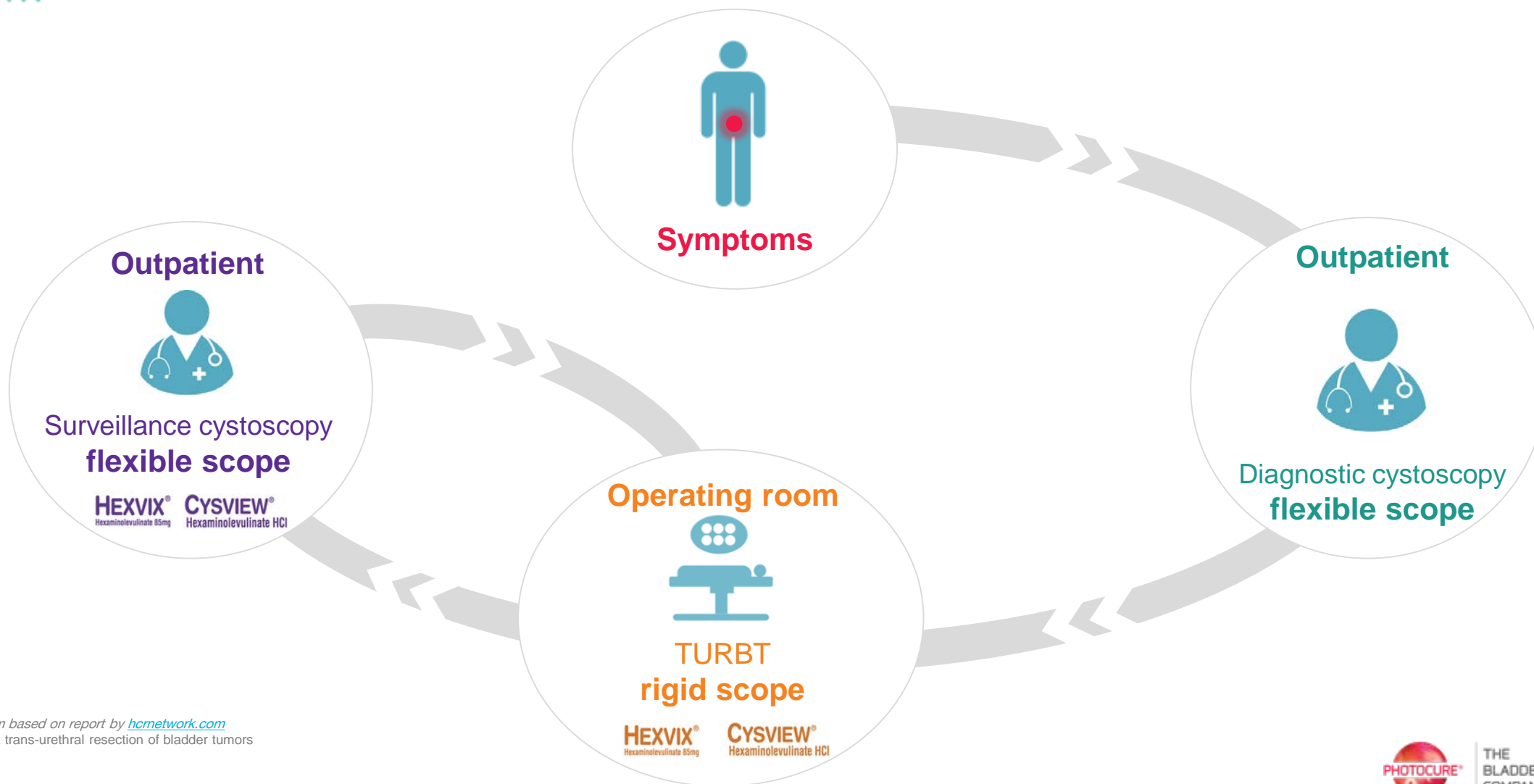
\$3.7 Billion in direct medical costs/year¹

NMI: non-muscle-invasive

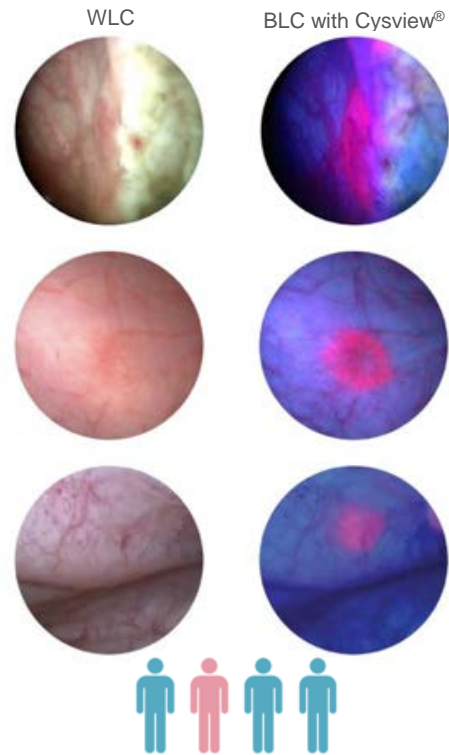
Picture: Mayo Clinic; Researchgate.net

1. Direct medical costs in USA in 2001: The health economics of bladder cancer: a comprehensive review of the published literature. Botteman MF et al. Pharmacoeconomics 2003;21 (8), 1315-1330

HEXVIX® (EU) / CYSVIEW® (USA) ADDRESSES THE NEED FOR IMPROVED DETECTION AND MANAGEMENT OF BLADDER CANCER



HEXVIX® / CYSVIEW® IS A TRANSFORMATIVE SOLUTION TO IMPROVE THE LIVES OF PATIENTS WITH BLADDER CANCER



Additional tumors found
in 1 out of 4 patients¹

Key feature

Better visual contrast between benign and malignant cells

Key benefits

Improve diagnostic accuracy
Achieve optimal surgical results



Significant reduction of disease recurrence
Reduction in disease progression
Potential for reduction in cystectomies
Improved cost-effective health outcomes

¹ Burder et al, Eur. Urol. 2013

WLC: White Light Cystoscopy; BLC: Blue Light Cystoscopy™ + Cysview®

CYSVIEW® TO BECOME THE NEW STANDARD OF CARE FOR THE DETECTION AND MANAGEMENT OF BLADDER CANCER IN THE USA

Supportive environment

Strongly recommended by national guidelines and expert panels
New reimbursement (Jan '19) for Medicare and Medicaid patients



American
Urological
Association



High adoption rate in leading sites

Established in >130 key cancer hospitals and leading institutions
And the numbers are growing

in 74% NCCN centers



in 56% of NCI centers



in 74% of top 25 Best Hospitals



HEXVIX® TO BECOME THE NEW STANDARD OF CARE FOR THE DETECTION AND MANAGEMENT OF BLADDER CANCER IN EUROPE

Supportive environment

Strongly recommended by European and national guidelines as well as expert panels



DANSK UROLOGISK CANCER GRUPPE

NICE National Institute for Health and Care Excellence



Continued growth in the Nordics

25% to 70% penetration rate

14% revenue growth during first 9 months of 2018

Further leverage commercial infrastructure

Improve penetration in Rest of Europe

Well established in Germany with 30% penetration rate

Significant untapped potential in Rest of Europe

CORE FINANCIALS

RESULTS FOR THE FIRST NINE MONTHS OF 2018 (9M '18)

For the nine months ended 30 September \$ million	9M '18	Proforma 9M '17	Change
Commercial Franchise			
Total Hexvix/Cysview revenue	15.8	13.2	20%
Nordics	4.2	3.7	14%
USA	5.6	3.9	45%
Partners	6.0	5.6	6%
Other revenue	0.6	0.5	18%
Total revenue	16.4	13.7	20%
Gross profit	14.9	12.7	18%
EBITDA recurring	0.9	1.4	-37%
Development Portfolio			
Operating expenses	-1.7	-3.3	-50%
EBITDA recurring	-1.7	-3.3	50%
TOTAL			
EBITDA recurring	-0.8	-1.9	58%
Ending cash balance	11.4	15.4	-26%

The statement is prepared on the proforma basis as if the accounting principles IFRS 15 and IFRS 9 had been adopted 1 Jan '17

Commercial Franchise

Strong revenue growth in US, up 45% YTD
Continued growth in Nordic, up 14%

Development Portfolio

Significant cost reduction – limited R&D

Cash position

Cash balance end of Q3' 18 at \$11.4 million
Q3 '18 net cash flow of -\$0.7 million

OUTLOOK



Financial guidance

- 2020 revenue outlook (USA) will be communicated at FY18 results

Growth drivers USA

- Larger commercial team
- Included in AUA and NCCN guidelines
- Favorable reimbursement
- Penetration into large surveillance market
- Target 400 largest hospitals
- Total market potential of >\$1.4 Billion

Growth drivers Europe

- Continued growth in key Nordic countries
- Potential additional partnerships

Addendum



SHARE INFORMATION

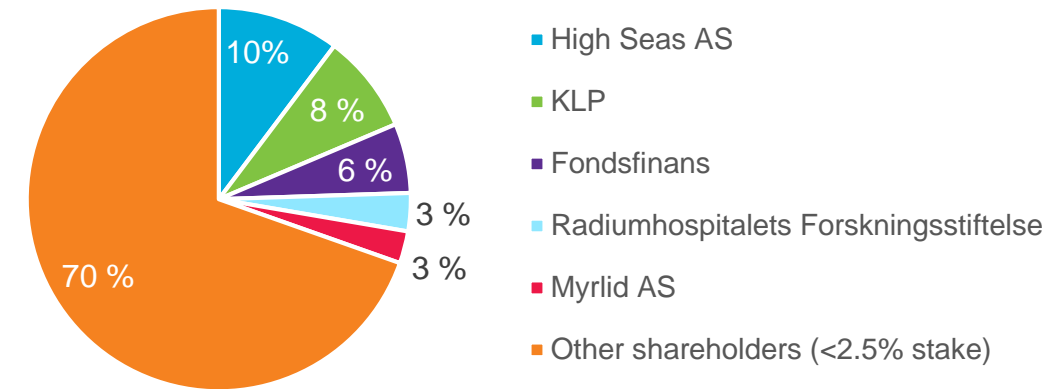
Listed on Oslo Stock Exchange

21,779,008 shares issued

Market cap: >\$100M

Avg Daily Vol 2018: 141K

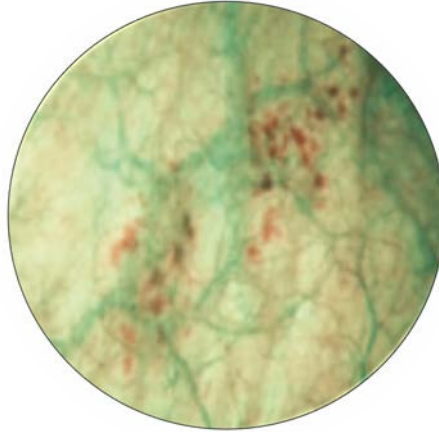
Major shareholders



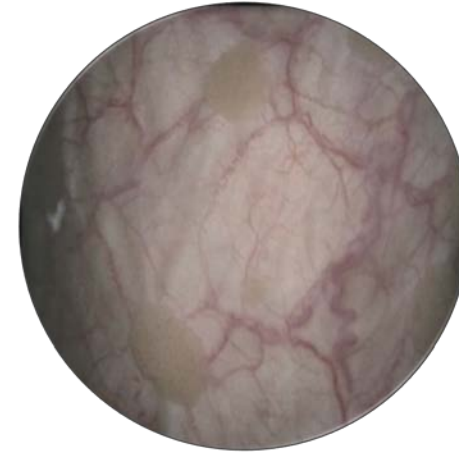
BLC CYSVIEW[®] VERSUS NBI VERSUS WLC



BLC with Cysview[®]



NBI image with Olympus



WLC image with Olympus

NBI is a surrogate marker for cancer as it enhances visualization of the blood vessels and surface structures, not cancerous cells

BLC[™] + Cysview[®]/Hexvix[®] is highly selective as it is absorbed specifically by cancerous cells leading to complete resection of the tumor