

# FORM TR-1 BE PART I

## 1) Status of the notification

Final

## 2) Issuer

Name FAGRON  
Identification number 0890-535-026

## 3) Reason for the notification

Acquisition or disposal of voting securities or voting rights

## 4) Notification by

A parent undertaking or a controlling person

## 5) Persons subject to the notification requirement

| Name<br>( & legal form for legal persons) | Address (for legal persons)   |
|---|---|
| The Goldman Sachs Group, Inc.             | Corporation Trust Center, 1209 Orange Street, Wilmington, DE 19801, USA |

## 6) Persons that dispose of, ... voting rights (Only to be filled in if art. 7 of the Law applies)

| Name<br>( & legal form for legal persons) | Address (for legal persons) |
|---|-----------------------------|
|   |                             |

Please continue entering the information in part II concerning the persons referred to in points 5 and 6

Click

## 7) Date on which the threshold is crossed

11/05/2016 (DD/MM/YYYY)

## 8) Threshold that is crossed (in %)

5

If the holding has fallen below the lowest threshold, you have the option of not entering any numbers under point 10

## 9) Denominator

32,111,827

Please enter the denominator before filling in the data

10) Notified details

| A) Voting rights                             | Previous notification | After the transaction |                              |                      |                              |
|--|-----------------------|-----------------------|------------------------------|----------------------|------------------------------|
|  |                       | # of voting rights    |                              | % of voting rights   |                              |
|  |                       | Linked to securities  | Not linked to the securities | Linked to securities | Not linked to the securities |
| Holders of voting rights                     |                       |                       |                              |                      |                              |
| The Goldman Sachs Group, Inc.                |                       | 0                     |                              | 0.00%                |                              |
| Goldman Sachs International                  |                       | 1,091,470             |                              | 3.40%                |                              |
| Goldman Sachs Asset Management, L.P.         |                       | 559,269               |                              | 1.74%                |                              |
| Goldman Sachs Asset Management International |                       | 13,391                |                              | 0.04%                |                              |
| subtotal                                     |                       | 1,664,130             |                              | 5.18%                |                              |
| TOTAL  |                       | 1,664,130             | 0                            | 5.18%                | 0.00%                        |

Start with "groups" of holders. Calculate subtotals and then finish with the persons who are "alone".  
The totals, subtotals and % will be updated once you have clicked on <CALCULATE>

| B) Equivalent financial instruments         | After the transaction        |                                       |                         |  |                    |
|---|------------------------------|---------------------------------------|-------------------------|--|--------------------|
|   | Type of financial instrument | Expiration date                       | Exercise period or date | # of voting rights that may be acquired if the instrument is exercised | % of voting rights |
| Holders of equivalent financial instruments |                              |                                       |                         |  |                    |
| TOTAL                                       |                              | (in relation to all expiration dates) |                         | 0  | 0.00%              |

The totals will be updated once you have clicked on <CALCULATE>

|  |                    |                    |
|--|--------------------|--------------------|
| TOTAL (Voting rights & Equivalent financial instruments) | # of voting rights | % of voting rights |
|  | 1,664,130          | 5.18%              |

11) Chain of controlled undertakings through which the holding is effectively held, if applicable

Please describe, or join a diagram in attachment

Please Refer to Annexure - Structure Chart

12) In case of proxy voting for only one GM

Holder

will cease to hold / will hold again

0

voting rights as of

### 13) Additional information

#### A) Convertible bonds and rights to subscribe to voting securities not yet issued

| Holder | Type of financial instrument | Expiration date<br>(DD/MM/YYYY) | Exercise/Conversion<br>period or date | Number | # of voting rights that may be acquired if the<br>instrument is exercised/converted |
|--------|------------------------------|---------------------------------|---------------------------------------|--------|---|
|        |                              |                                 |                                       |        |   |

#### B) Shares without voting rights

| Holder | Number |
|--------|--------|
|        |        |

#### C) Remarks

Done at

London

On

17/05/2016

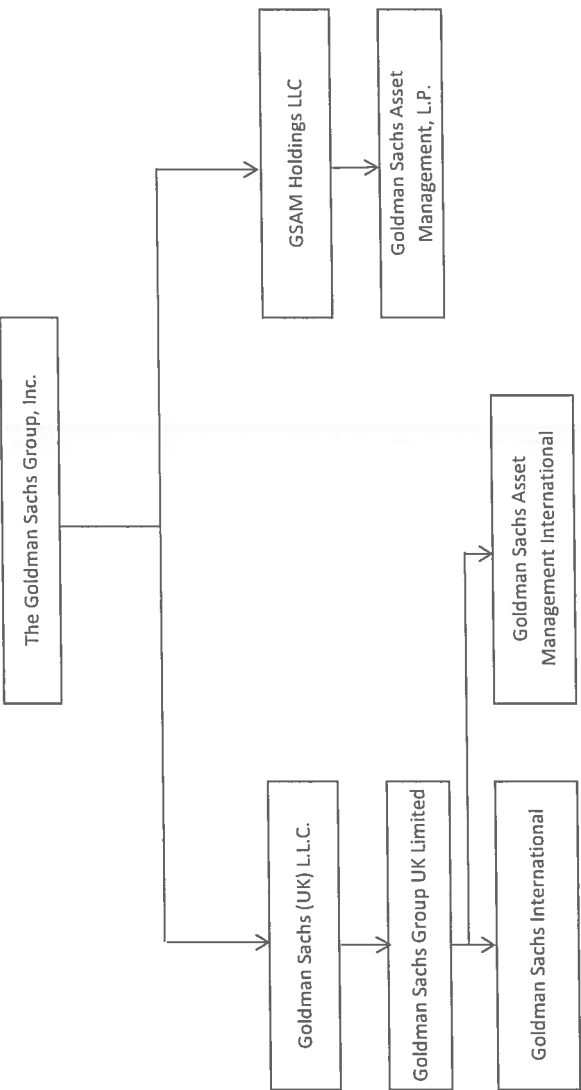
(DD/MM/YYYY)

Name & capacity

Joanna Foley, Executive Director, Regulatory Operations

Signature

J. Foley



Note : The above structure chart reflecting the chain of controlled undertakings is based on voting rights only. For the purpose of aggregation and representation , only entities that have more than 50% of the voting shares are regarded as a controlled undertaking under the substantial shareholder disclosure rules. The structure chart comprises only GS entities which are part of the notification.

### **Chain of Controlled Undertakings:**

- GOLDMAN SACHS ASSET MANAGEMENT, L.P. IS CONTROLLED BY GSAM HOLDINGS LLC WHICH IS CONTROLLED BY THE GOLDMAN SACHS GROUP, INC.
- GOLDMAN SACHS ASSET MANAGEMENT INTERNATIONAL IS CONTROLLED BY GOLDMAN SACHS GROUP UK LIMITED WHICH IS CONTROLLED BY GOLDMAN SACHS (UK) L.L.C. WHICH IS CONTROLLED BY THE GOLDMAN SACHS GROUP, INC.
- GOLDMAN SACHS INTERNATIONAL IS CONTROLLED BY GOLDMAN SACHS GROUP UK LIMITED WHICH IS CONTROLLED BY GOLDMAN SACHS (UK) L.L.C. WHICH IS CONTROLLED BY THE GOLDMAN SACHS GROUP, INC.