

**LiCo Energy Metals - Intersects 3.92% Cobalt over 0.75 m Teledyne Cobalt Property**

**PRESS RELEASE**

**November 30th, 2017:** Vancouver, British Columbia; - **LiCo Energy Metals Inc.** (“the Company” or “LiCo”) **TSX-V: LIC, OTCQB: WCTXF** is pleased to report assay results for the first diamond drill hole completed on the Teledyne Cobalt Property, located 6 km northeast of Cobalt, Ontario.

A summary of the most significant results of the recent drill core assays are:

- **TE17-01 0.62% Co over 6.00 m from 136.00 to 142.00 m including 3.92% Co over 0.75 m from 140.25 to 141.00 m.**

On the Teledyne Cobalt Property, the Company has completed a total of 11 diamond drill holes totaling 2,200 m. The diamond drilling program has been completed, and the drill rig will be demobilized this week. The drilling has extended the cobalt mineralization on Property, with the grades being consistent with the historical results.

Tim Fernback, President & CEO of LiCo, states “We are very happy with the drilling results from our Teledyne and Glencore Bucke drilling programs. We set a goal to replicate the historic results of cobalt grade and width of mineralization, which we have accomplished in spectacular fashion. Yesterday we announced an intersection of 7.64% Cobalt at Glencore Bucke, and today we have assay results for 3.92% Cobalt at Teledyne. Now that the remaining drill core is making its way to the assay lab, we are eagerly awaiting additional cobalt, copper and silver results that can help us define the next stage of our exploration program on both properties for 2018.”

The results for diamond drill hole TE17-01 is summarized in Table 1 below.

Table 1: Summary of Diamond Drill Results

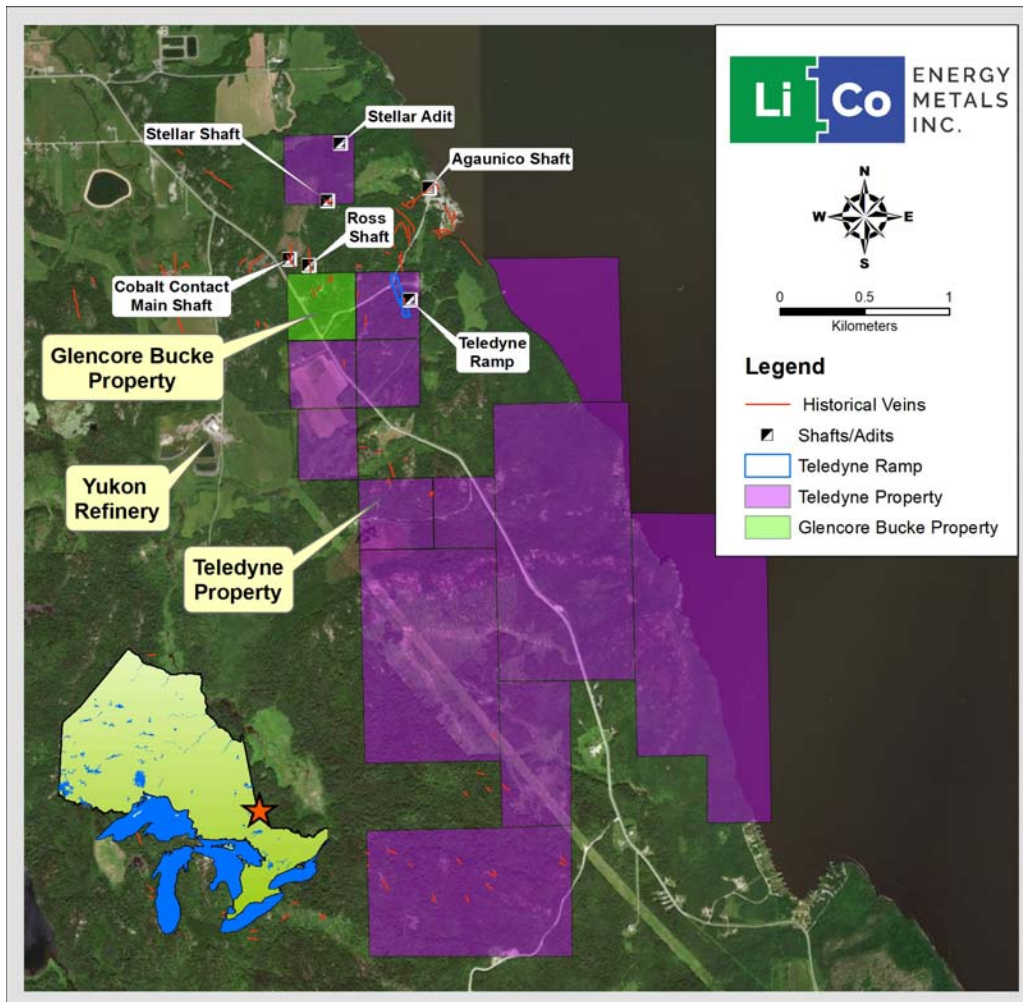
DDH	From (m)	To (m)	Core Length (m)	Co (%)	Ag (ppm)	Cu (ppm)	Zn (ppm)	Pb (ppm)
TE17-01	136.00	142.00	6.00	0.62	0.9	51	37	4
Incl.	136.50	137.00	0.50	0.23	0.9	6	47	2
Incl.	139.75	142.00	2.25	1.54	1.8	121	40	8
Incl.	140.25	141.00	0.75	3.92	2.4	216	39	13

Note: Intervals reported in Table 1 represent core lengths and not true widths.

## Qualified Person

The Glencore Bucke and Teledyne Properties are managed by Joerg Kleinboeck, P.Geo., (LiCo's QP), and supervised by Dwayne Melrose, Director and Head of the Technical Advisory Board of LiCo.

The overall drilling program has been conducted as part of LiCo's flow thru financing and work commitments for the Glencore Bucke and Teledyne Properties.



**About LiCo Energy Metals:** <https://licoenergymetals.com/>

LiCo Energy Metals Inc. is a Canadian based exploration company whose primary listing is on the TSX Venture Exchange. The Company's focus is directed towards exploration for high value metals integral to the manufacture of lithium ion batteries.

**Glencore Bucke Cobalt Project, Cobalt, Ontario:** The Company has entered into a property purchase agreement to acquire a 100% interest from Glencore Canada Corporation (subsidiary of Glencore plc) in the Glencore Bucke Property, situated in Bucke Township, 6 km east-northeast of Cobalt, Ontario, subject to a back-in provision, production royalty and off-take agreement. Strategically, the Glencore Bucke Property consists of 16.2 hectares and sits along the west boundary of LiCo's Teledyne Cobalt Project. The Property covers the southern extension of the #3 vein that was historically mined on the neighbouring Cobalt Contact Property located to the north of the Glencore Bucke Property. Diamond drilling in 1981 on the Glencore Bucke Property delineated two zones of mineralization measuring 150 m and 70 m in length.

**Ontario Teledyne Cobalt Project:**

The Company has an option to earn 100% ownership, subject to a royalty, in the Teledyne Project located near Cobalt, Ontario. The Property adjoins the south and west boundaries of claims that hosted the Agaunico Mine. From 1905 through to 1961, the Agaunico Mine produced a total of 4,350,000 lbs. of cobalt and 980,000 oz. of silver. A significant portion of the cobalt that was produced at the Agaunico Mine located along structures that extended southward onto property currently under option to LiCo Energy Metals.

**Chile Purickuta Lithium Project:**

The Purickuta Project is located within Salar de Atacama, a salt flat encompassing 3,000 km<sup>2</sup>, being about 100 km long, 80 km wide and home to approximately 37% of the world's Lithium production. The salar possesses a very high grade of both Lithium (1,840mg/l) and Potassium (22,630mg/l) and is close to power, labour, communications, transportation and other infrastructure. The property of 160 hectares is enveloped by a concession owned by Sociedad Quimica y Minera ("SQM") and lies, significantly, within a few kilometers of the property of CORFO (the Chilean Economic Development Agency) where its leases to both SQM and Albermarle's Rockwood Lithium Corp. Together these two companies have combined production of over 62,000 tonnes of LCE (Lithium Carbonate Equivalent) annually making up 100% of Chile's current lithium output. The unique characteristics of Salar de Atacama make finished lithium carbonate easier and cheaper to produce than any of its peer group globally.

Purickuta is a smaller exploitation concession rather than a large exploration concession thereby accelerating the task of taking the project to production once a measured reserve can be established. Currently, the Chilean government retains ownership of lithium separate from other minerals and thus production can only proceed upon receipt of a special lithium operation contract known as a "CEOL". In the future, it will be necessary for LiCo and partner to negotiate a production contract with CORFO concurrently with completing any positive feasibility study. "Chile, which has one of the world's most plentiful supplies of lithium, is pushing ahead with new policies to develop those reserves". (Reuters Jan 2, 2017).

**Nevada Dixie Valley Lithium Project:**

The Company has an option to acquire a 100% interest, subject to a 3% NSR, on a large lithium exploration project at the Humboldt Salt Marsh in Dixie Valley, Nevada. The geologic setting and

presence of lithium in active geothermal fluids and surface salts in Dixie Valley match characteristics of producing lithium brine deposits at Clayton Valley, Nevada and in South America.

**Nevada Black Rock Desert Lithium Project:**

The Company has entered into an option agreement whereby the Company may earn an undivided 100% interest, subject to a 3% NSR, in the Black Rock Desert Lithium Project in southwest Black Rock Desert, Washoe County, Nevada.

The Company is planning an exploration programs on a number of its properties over the next several months. The technical content of this news release has been reviewed and approved Joerg Kleinboeck, P.Geo., an independent consulting geologist and a qualified person as defined in NI 43-101.

**On Behalf of the Board of Directors**

Tim Fernback, President & CEO

*Neither the TSX Venture Exchange nor its Regulation Services Provider (as that term is defined in the policies of the TSX Venture Exchange) accepts responsibility for the adequacy or accuracy of this release.*

**Disclaimer for Forward-Looking Information:**

*This news release may contain forward-looking statements which include, but are not limited to, comments that involve future events and conditions, which are subject to various risks and uncertainties. Except for statements of historical facts, comments that address resource potential, upcoming work programs, geological interpretations, receipt and security of mineral property titles, availability of funds, and others are forward-looking. Forward-looking statements are not guarantees of future performance and actual results may vary materially from those statements. General business conditions are factors that could cause actual results to vary materially from forward-looking statements.*