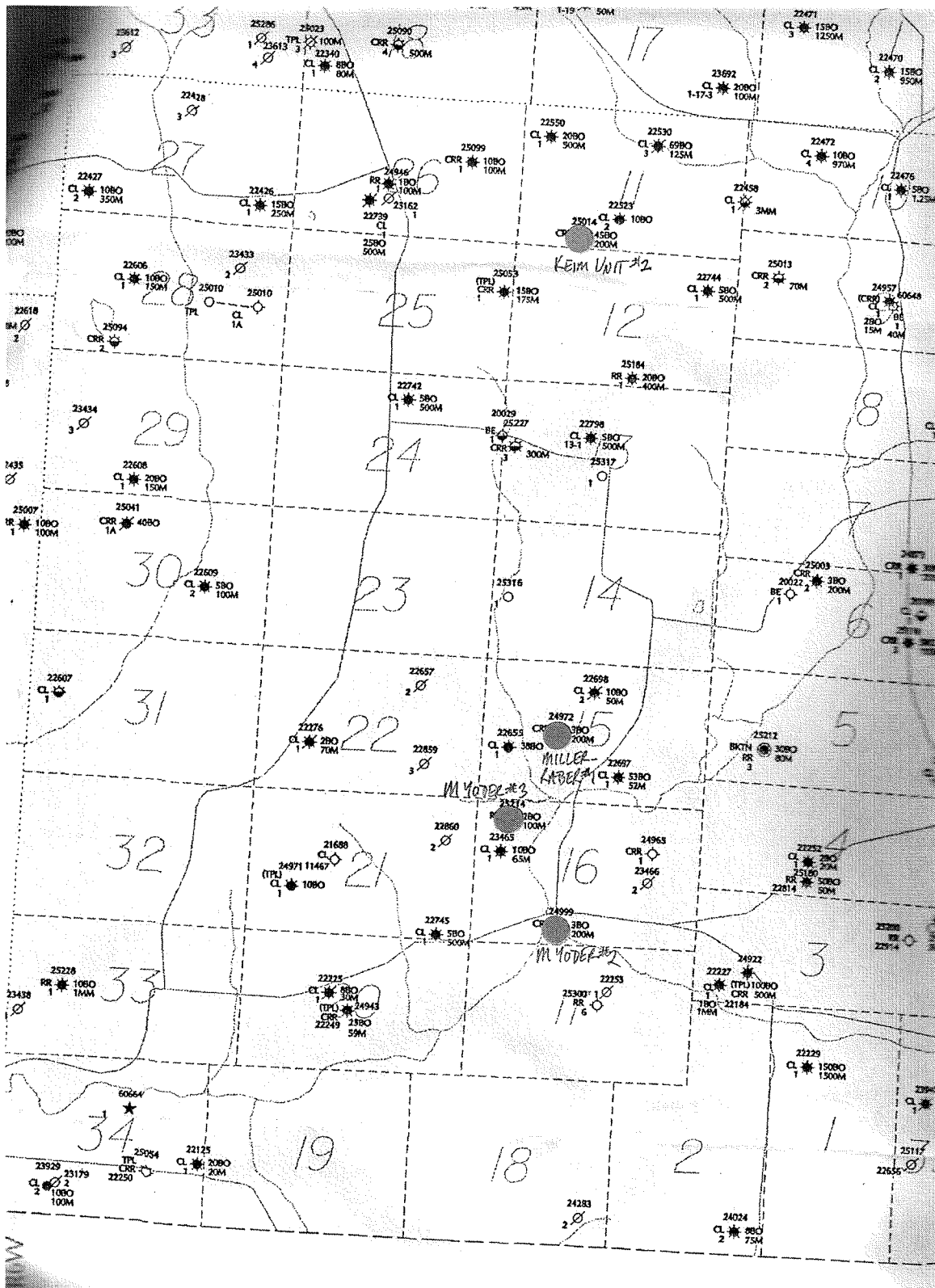
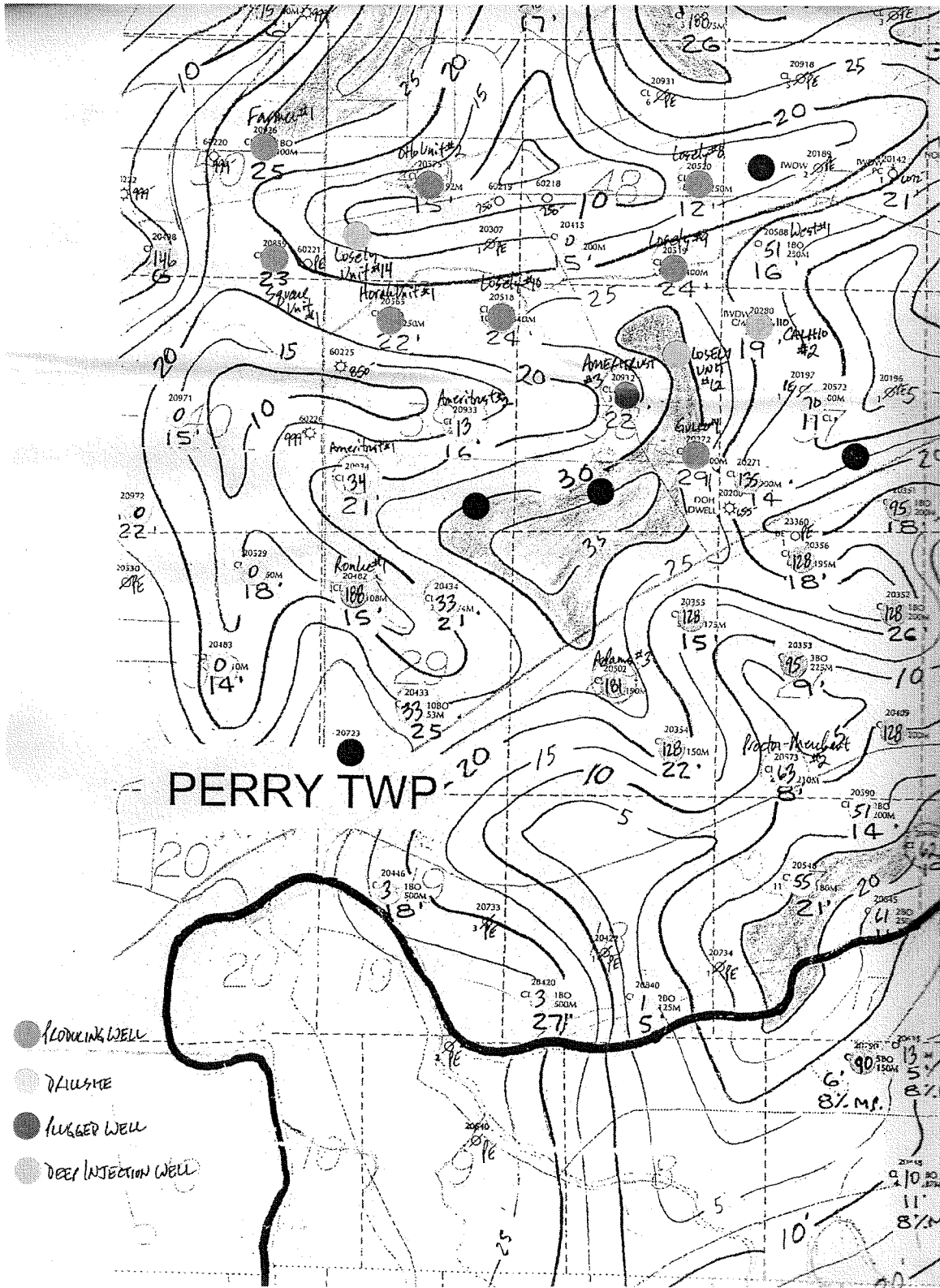
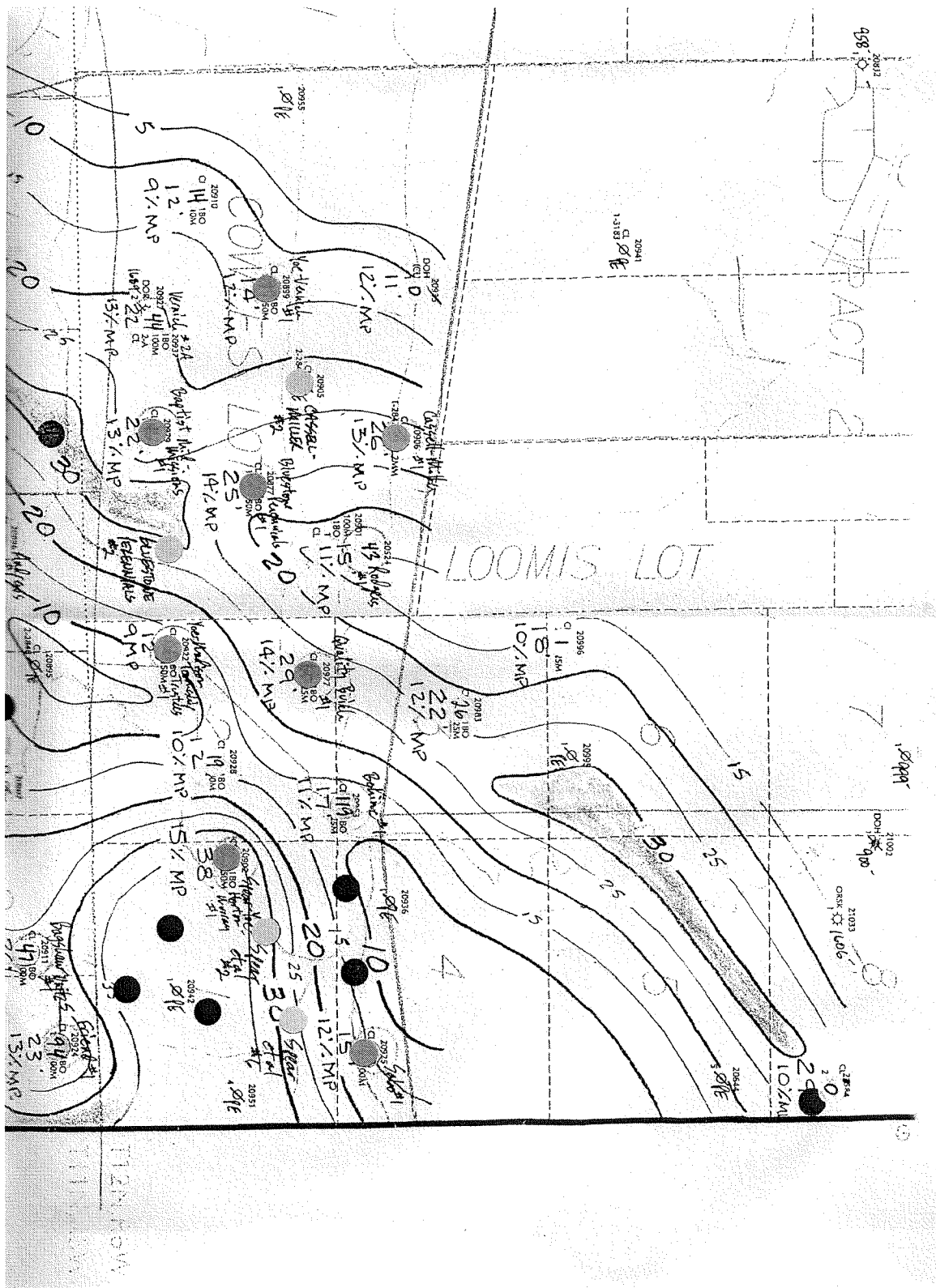


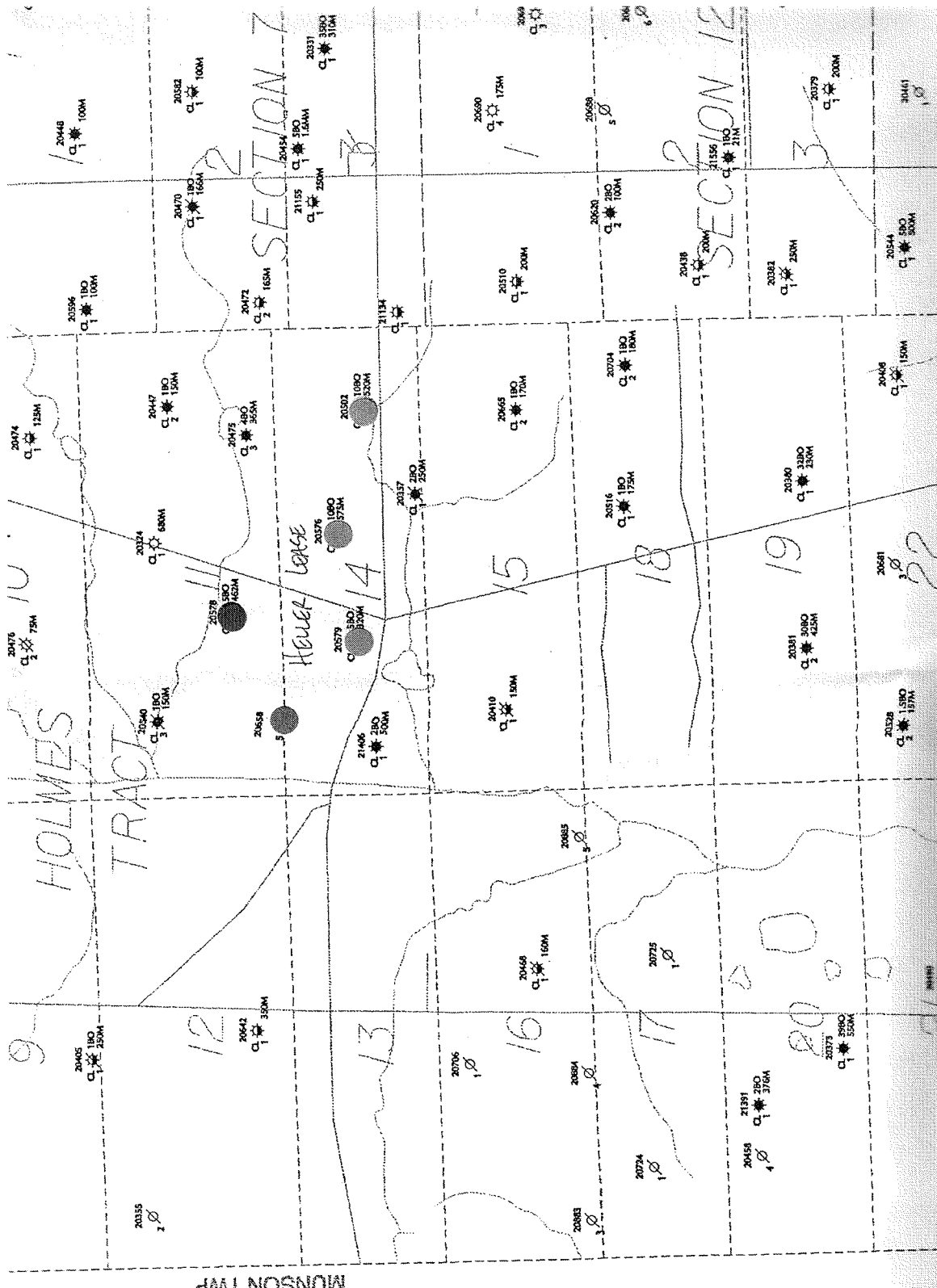
MAPS

- 1 Mechanic Township, Holmes County, Ohio
- 2 Clinton Net Pay Map--Perry Township, Lake County, Ohio
- 3 Clinton Net Pay Map--Madison Township, Lake County, Ohio
- 4 Claridon Township, Geauga County, Ohio
- 5 Structure Map of the Wilson Sand, Mississippi
- 6 Top of the Wilson Channel Sand, Mississippi
- 7 Net Oil Isopach Map, Mississippi
- 8 Pilot Mountain Quadrangle Topographic Map, Tennessee
- 9 Gobey Quadrangle Topographic Map, Tennessee
- 10 Robbins Quadrangle Topographic Map, Tennessee
- 11 Rugby Quadrangle Topographic Map, Tennessee

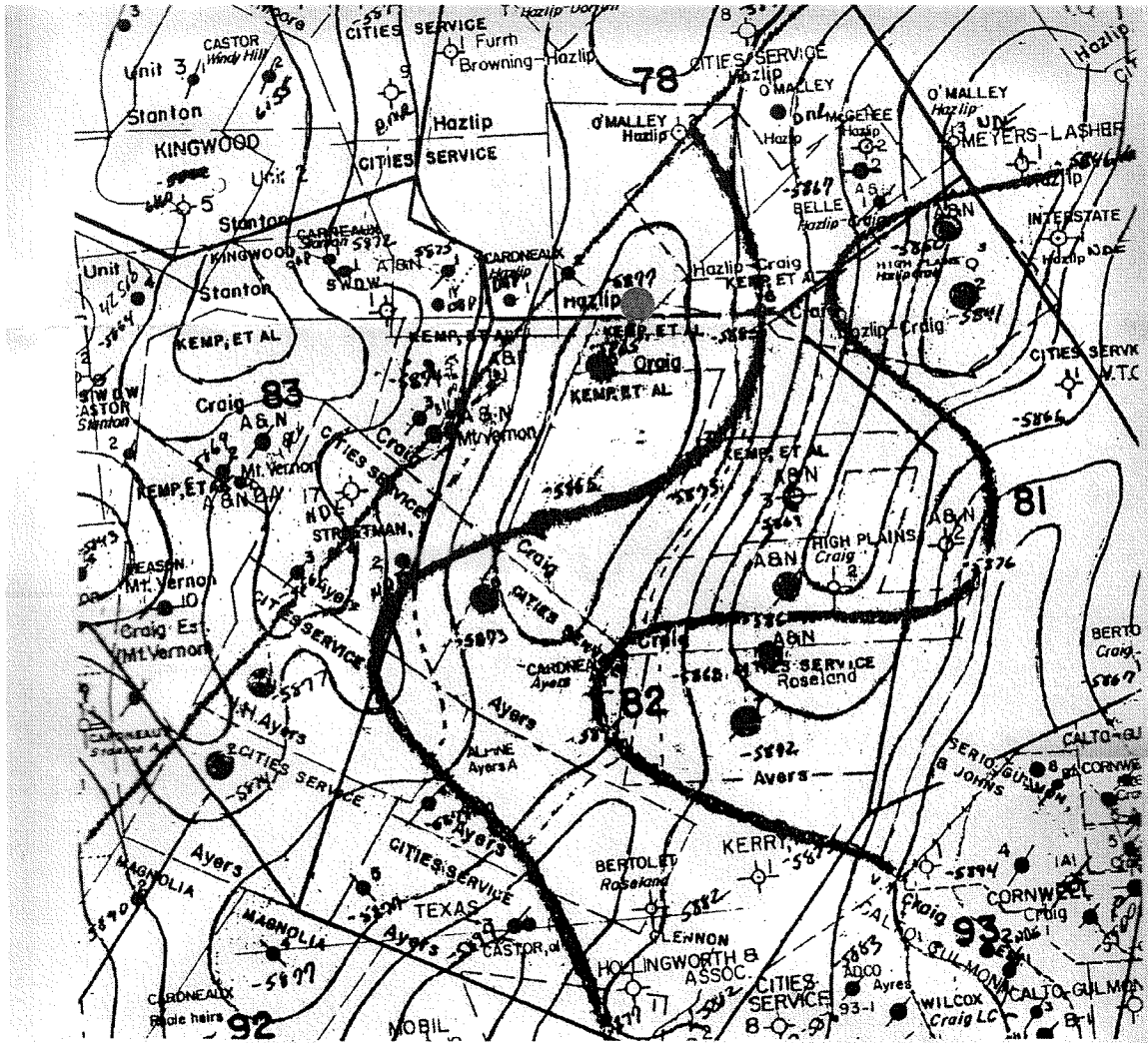




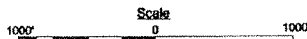




MUNSON TWP



ALDRIDGE OPERATING COMPANY, LLC
LAGRANGE FIELD PROJECT
 Section 81 & 82, Township 7 North - Range 2 West
Adams County, Mississippi
 Structure Map of the Wilson Sand
 Contour Interval: 10'
 Scale: 1" = 1000'

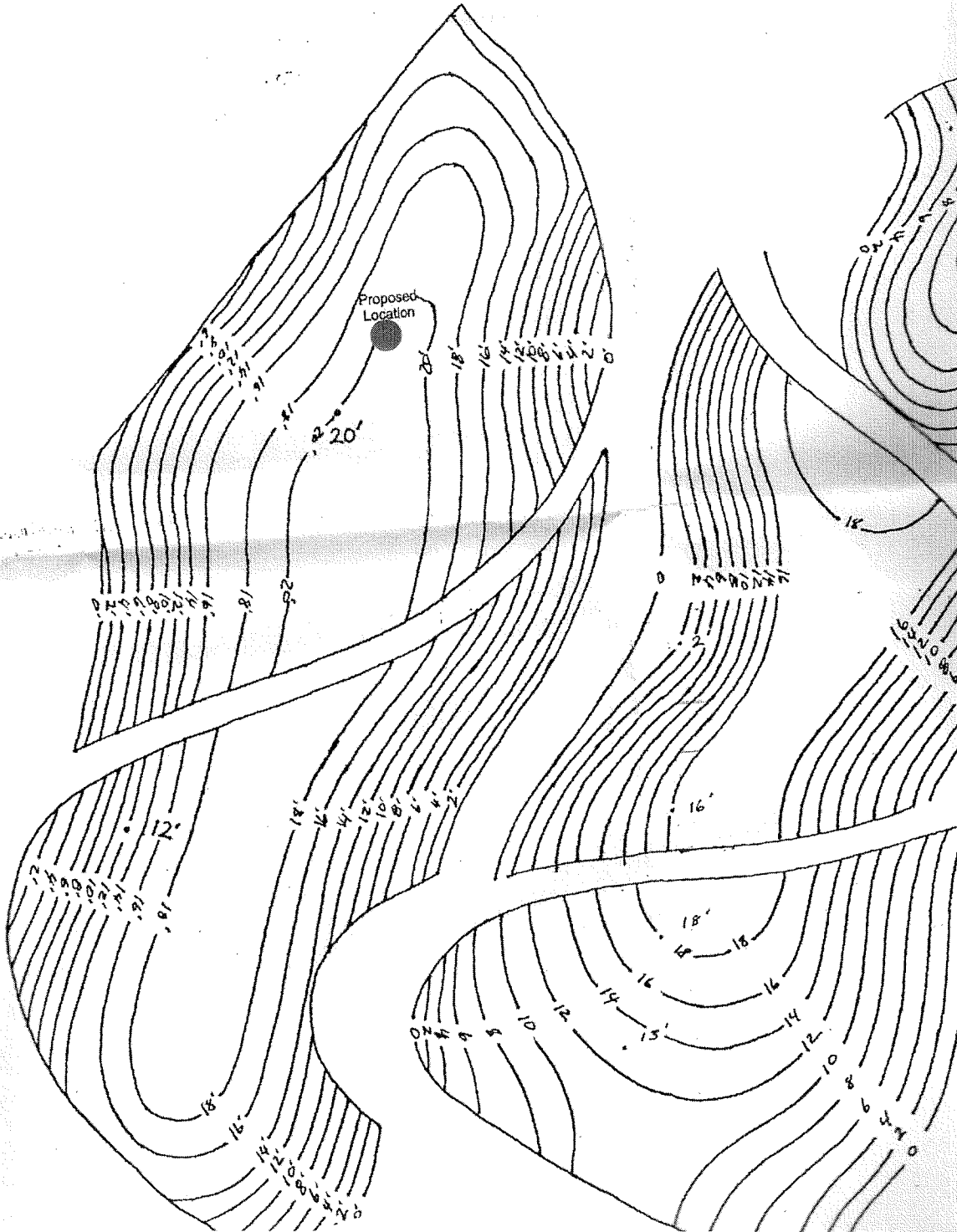


Hazlip #1

PLANIMETER AND VOLUMETRIC

Formula used to calculate Volume in A

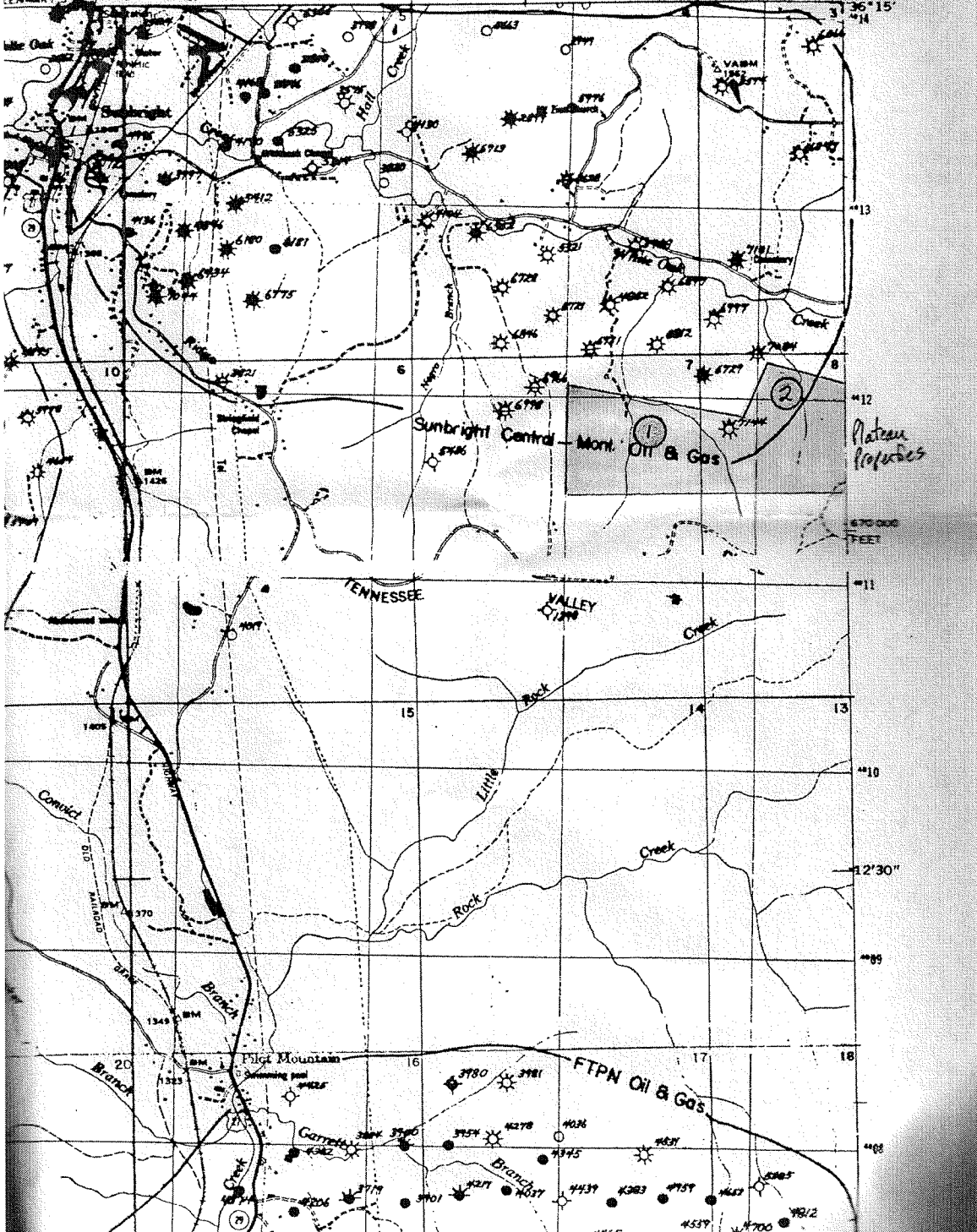
$$\text{Volume} = H/2 (Vu1 + (2 \times Vu2) + (2 \times Vu3) + \dots + las)$$

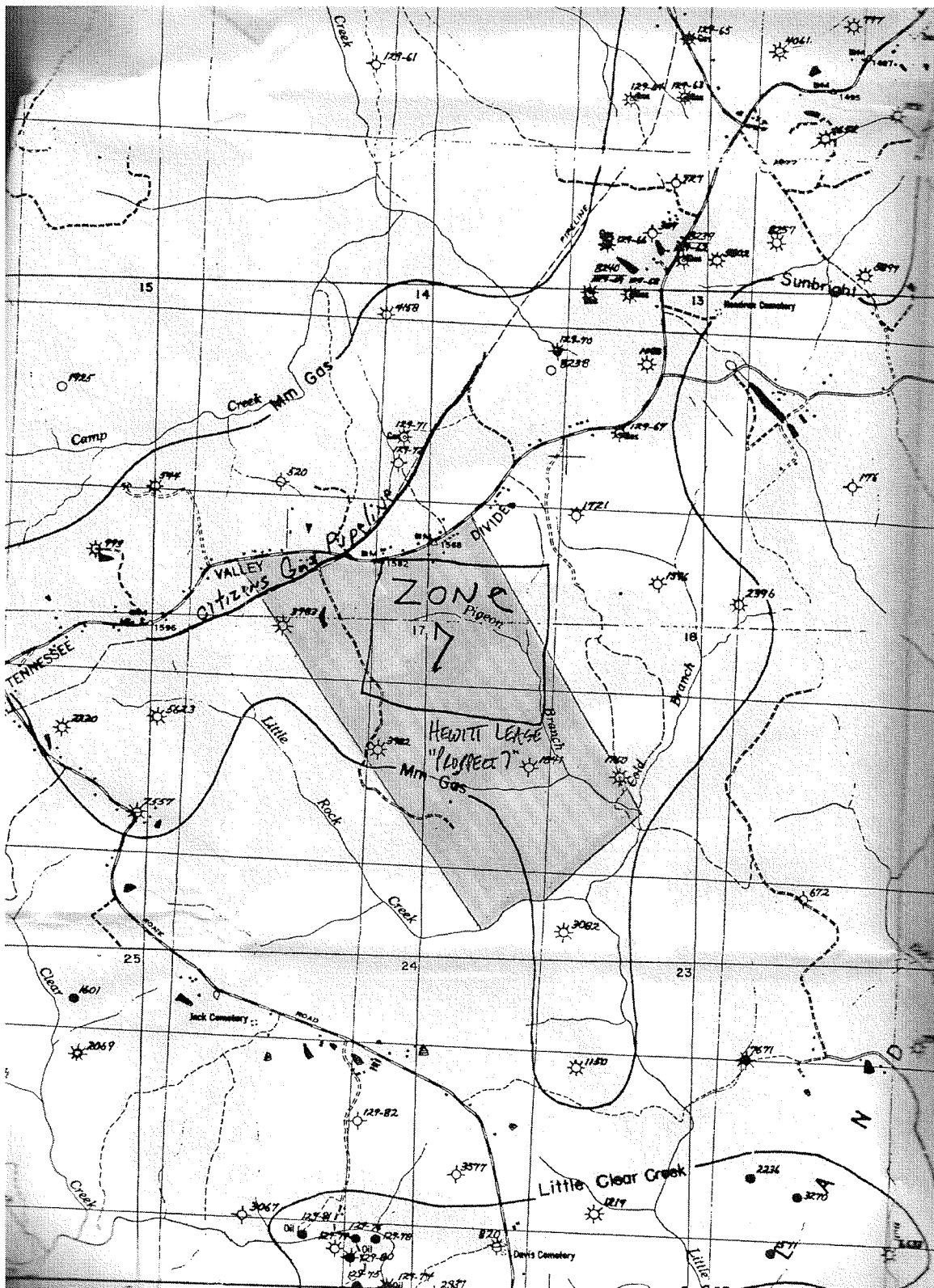


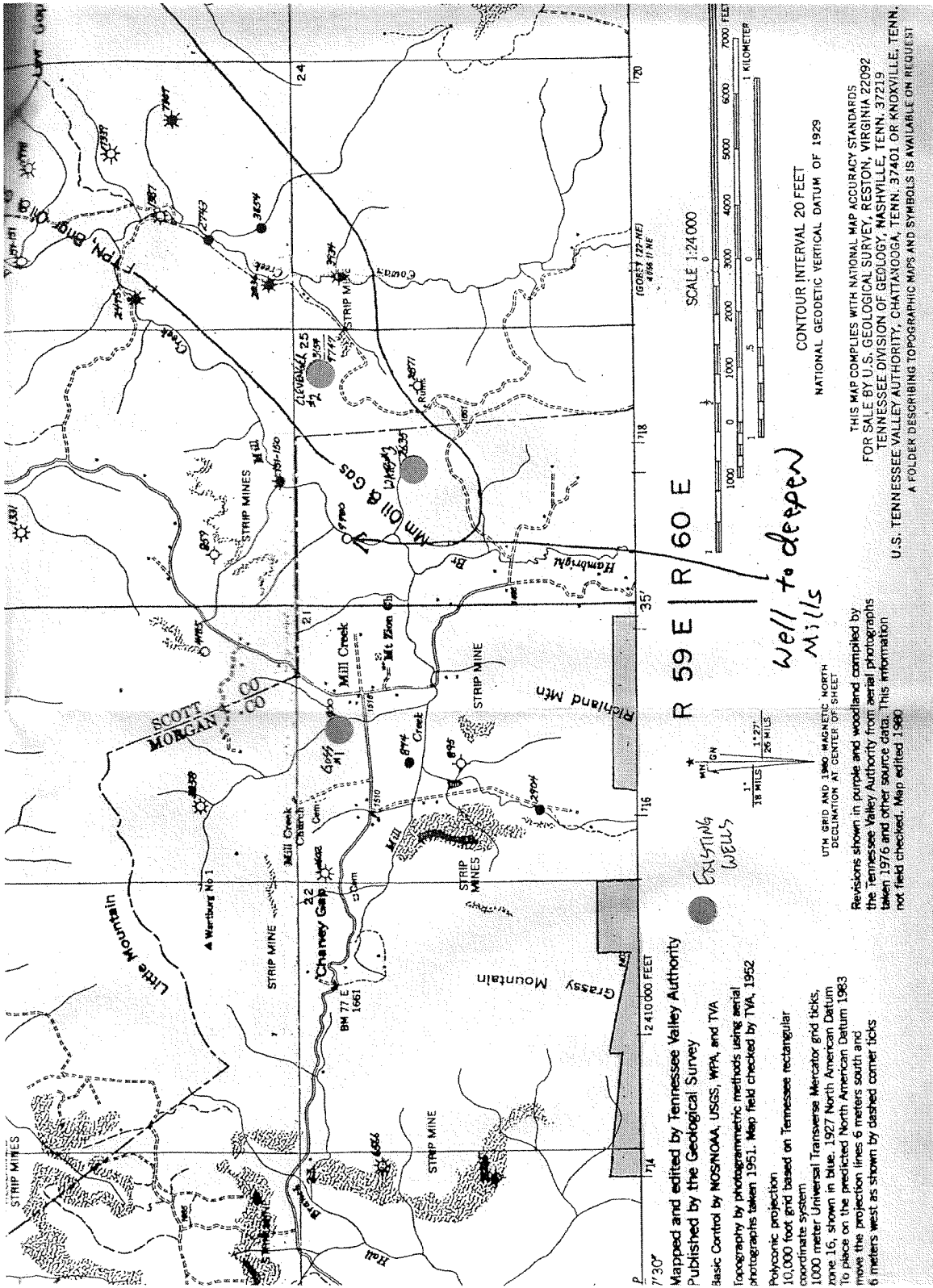
R 58 E | R 59 E

PILOT MOUNTAIN QUADRANGLE
TENNESSEE—MORGAN CO.
7.5 MINUTE SERIES (TOPOGRAPHIC) 122-NW

ONEIDA 25 MI. LENAPY 2 40' 710 711 2400000 FEET 713 84°37'30" 31°36'15"





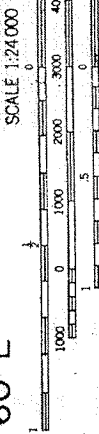
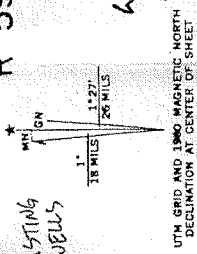


Mapped and edited by Tennessee Valley Authority
 Published by the Geological Survey
 Basic Control by MOSNOAA, USGS, WPA, and TVA
 Topography by photogrammetric methods using aerial
 photographs taken 1951. Map field checked by TVA, 1952

Polyconic projection
 10,000 foot grid based on Tennessee rectangular
 coordinate system
 1000 meter Universal Transverse Mercator grid ticks,
 zone 16, shown in blue, 1927 North American Datum
 To place on the predicted North American Datum 1983
 move the projection lines 6 meters south and
 6 meters west as shown by dashed corner ticks

R 59 E | R 60 E
 Well to deepen Mills

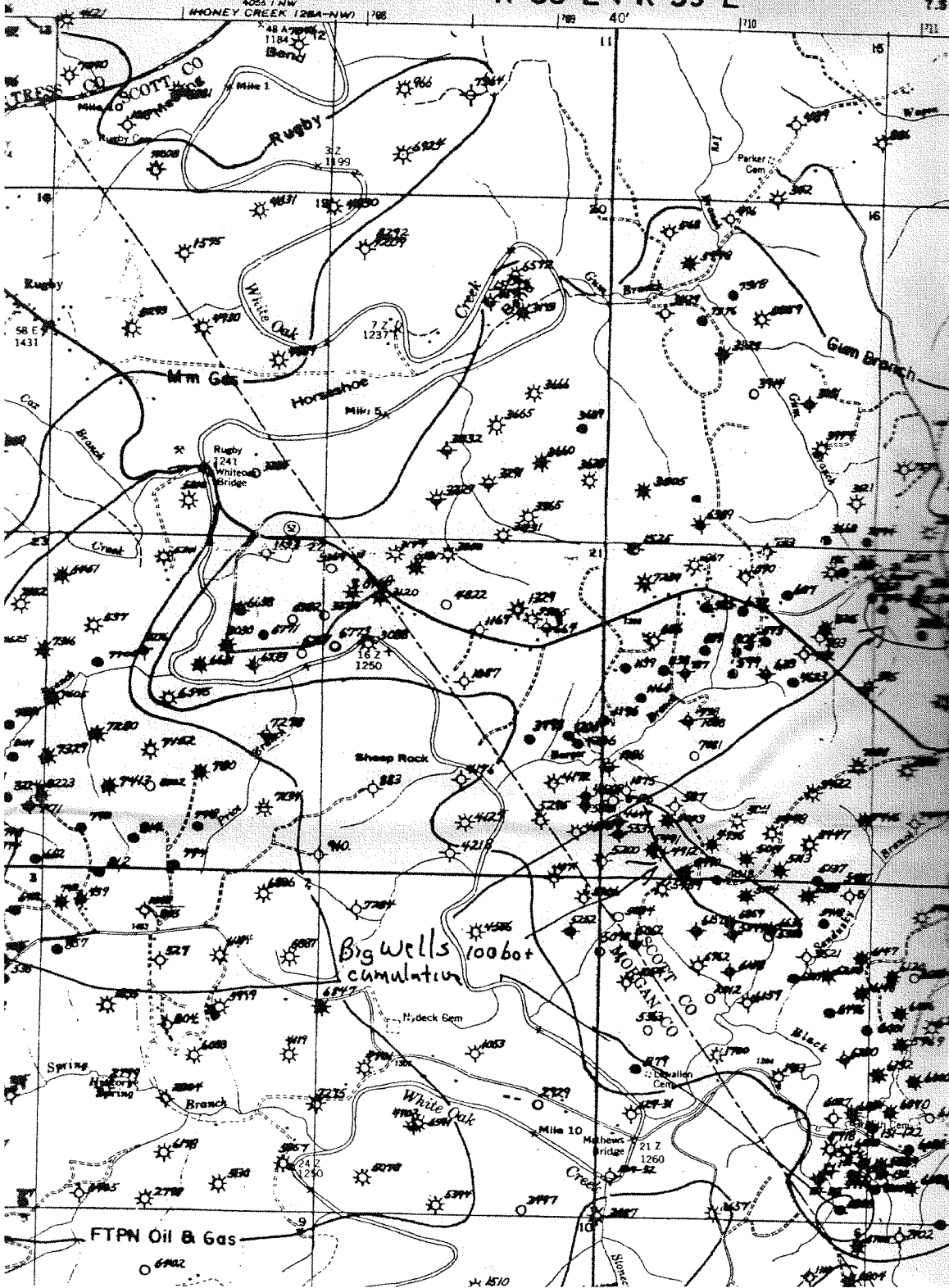
EXISTING WELLS



CONTOUR INTERVAL 20 FEET
 NATIONAL GEODETIC VERTICAL DATUM OF 1929

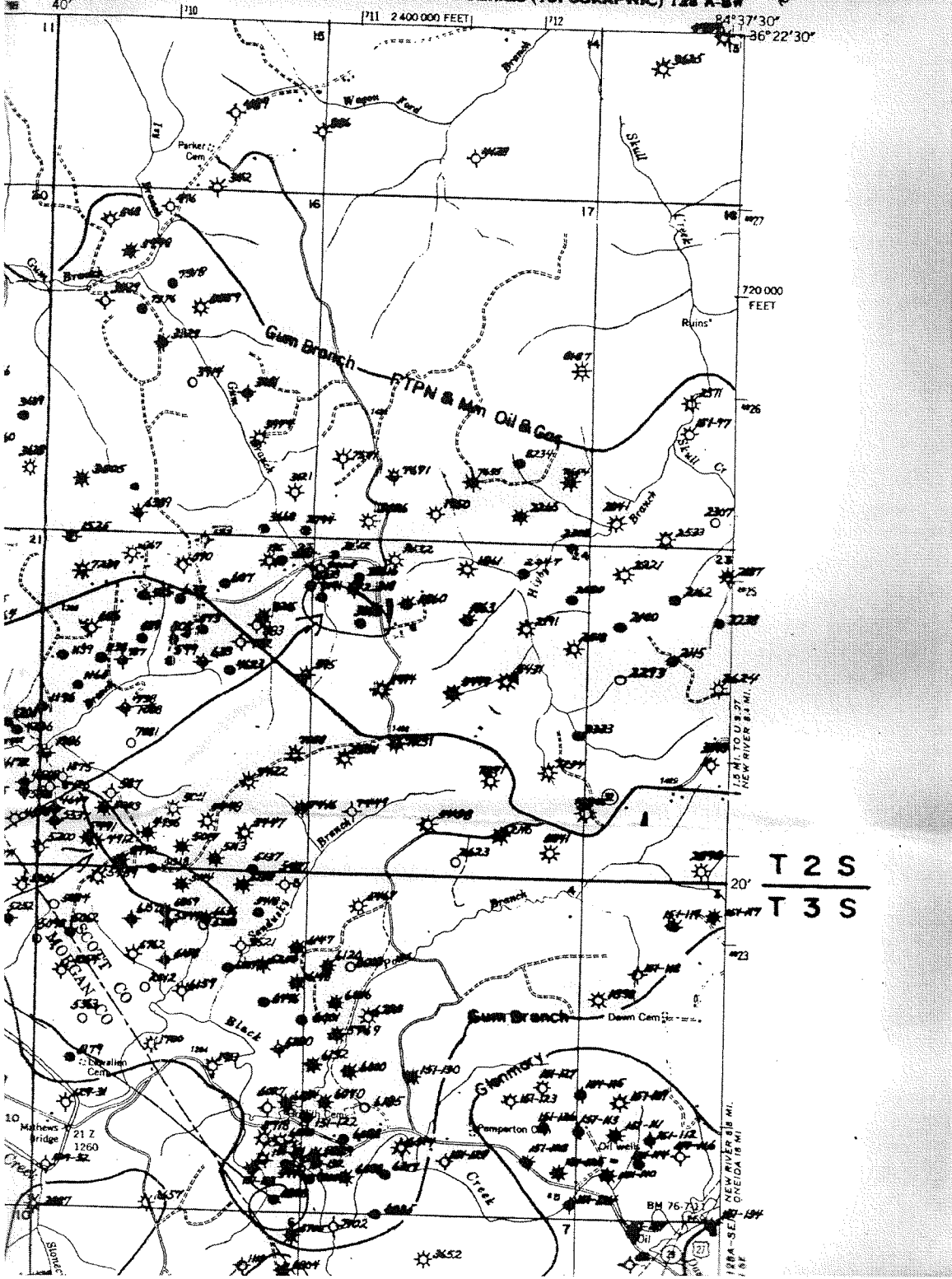
THIS MAP COMPLIES WITH NATIONAL MAP ACCURACY STANDARDS
 FOR SALE BY U.S. GEOLOGICAL SURVEY, RESTON, VIRGINIA 22092
 TENNESSEE DIVISION OF GEOLOGY, NASHVILLE, TENN. 37219
 U.S. TENNESSEE VALLEY AUTHORITY, CHATTANOOGA, TENN. 37401 OR KNOXVILLE, TENN.
 A FOLDER DESCRIBING TOPOGRAPHIC MAPS AND SYMBOLS IS AVAILABLE ON REQUEST

Revisions shown in purple and woodland compiled by
 the Tennessee Valley Authority from aerial photographs
 taken 1976 and other source data. This information
 not field checked. Map edited, 1980

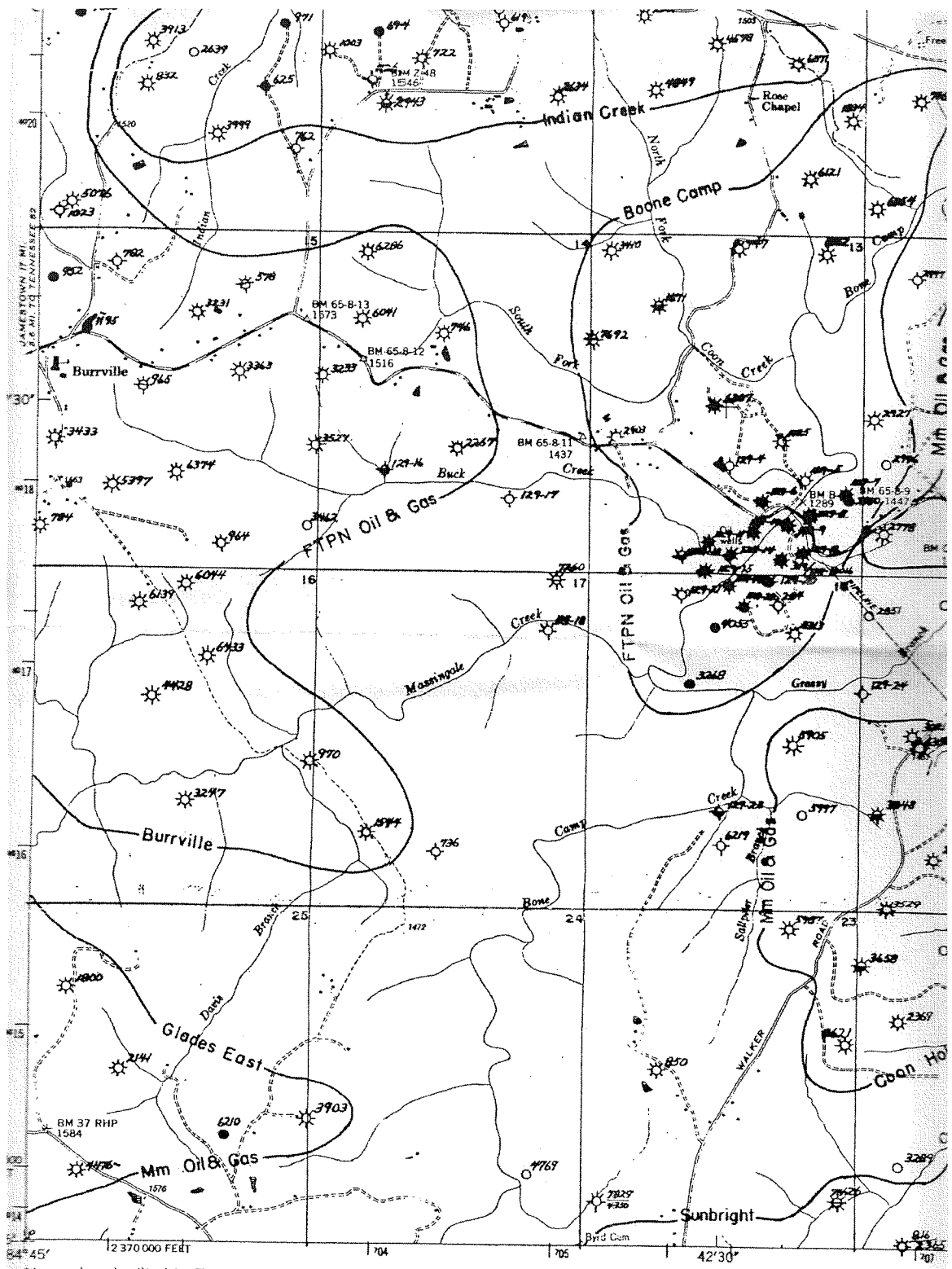


1 E R 59 E

7.5 MINUTE SERIES (TOPOGRAPHIC) 128 A-SW

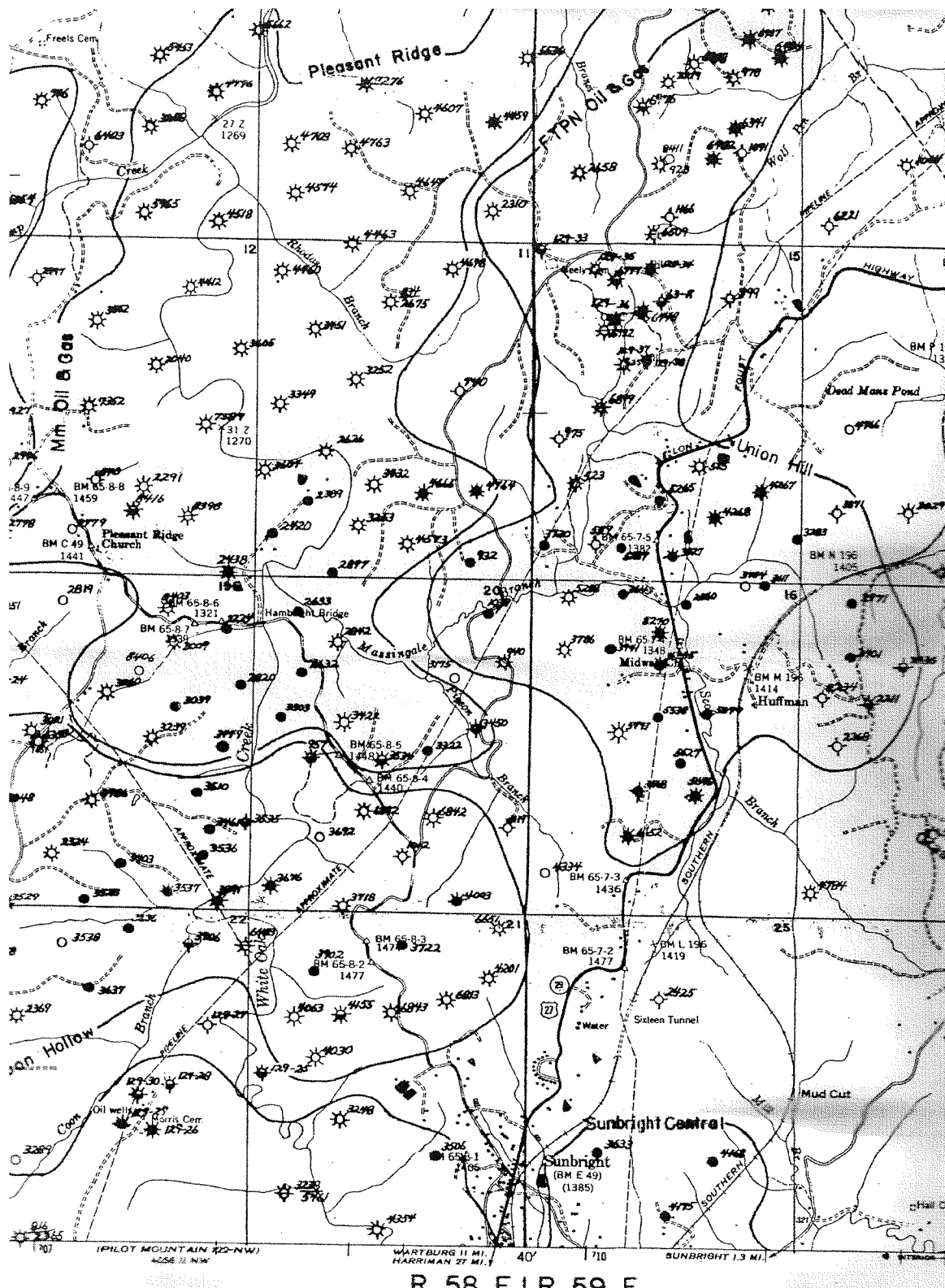


T 2 S
T 3 S



Mapped and edited by Tennessee Valley Authority
 Published by the Geological Survey

11 D



R 58 F 19 F

11 E

