

**NI 43-101 TECHNICAL REPORT PERTAINING TO:**

**THE OGDEN PROPERTY**

**Timmins Area**

**Timmins Mining Camp**

November 2, 2010

**Prepared for Knick Exploration Inc.**

Prepared by: Donald Théberge, Eng., M.B.A.

1.0) Title page

**2.0) TABLE OF CONTENTS**

**3.0) SUMMARY ..... 4**

**4.0) INTRODUCTION ..... 7**

    4.A) RECIPIENT ..... 7

    4.B) OBJECTIVES..... 7

    4.C) SOURCES OF DATA AND INFORMATION ..... 7

    4.D) SCOPE OF THE PERSONAL INSPECTION BY THE QUALIFIED PERSON ..... 7

    4.E) UNITS USED IN THIS REPORT ..... 7

**5.0) RELIANCE ON OTHER EXPERTS..... 8**

**6.0) PROPERTY DESCRIPTION AND LOCATION..... 8**

    6.A) AREA..... 8

    6.B) LOCATION ..... 8

    6.C) TYPE OF MINERAL TENURE ..... 8

    6.D) NATURE AND EXTENT OF THE ISSUER’S TITLES ..... 11

    6.E) PROPERTY BOUNDARIES ..... 11

    6.F) LOCATION OF THE MINERALIZED ZONES ..... 11

    6.G) ROYALTIES ..... 11

    6.H) ENVIRONMENTAL LIABILITIES..... 12

    6.I) REQUIRED PERMITS ..... 12

**7.0) PHYSIOGRAPHY, ACCESSIBILITY, INFRASTRUCTURES AND CLIMATE..... 12**

    7.A) TOPOGRAPHY, ELEVATION, VEGETATION AND DRAINAGE ..... 12

    7.B) ACCESSIBILITY ..... 12

    7.C) INFRASTRUCTURE ..... 12

    7.D) CLIMATE ..... 13

**8.0) HISTORY..... 13**

**9.0) GEOLOGICAL SETTING..... 16**

    9.1) REGIONAL GEOLOGY ..... 16

    9.2) LOCAL GEOLOGY..... 17

    9.3) PROPERTY GEOLOGY..... 18

**10.0) DEPOSIT TYPES ..... 20**

**11.0) MINERALIZATION ..... 23**

**12.0) EXPLORATION ..... 24**

**13.0) DRILLING ..... 26**

**14.0) SAMPLING METHOD AND APPROACH ..... 26**

**15.0) SAMPLE PREPARATION, ANALYSIS AND SECURITY ..... 26**

**16.0) DATA VERIFICATION ..... 28**

**17.0) ADJACENT PROPERTIES..... 28**

18.0) MINERAL PROCESSING AND METALLURGICAL TESTING.....	28
19.0) MINERAL RESOURCE AND MINERAL RESERVE ESTIMATES.....	28
20.0) OTHER RELEVANT DATA AND INFORMATION.....	29
21.0) INTERPRETATION AND CONCLUSIONS.....	29
22.0) RECOMMENDATIONS.....	30
23.0) REFERENCES .....	32
23.1) OGS REPORTS AND ASSESSMENT WORK .....	32
23.2) GEOSCIENTIFIC PAPERS .....	34
24.0) DATE AND SIGNATURE PAGE.....	35
25.0) ADDITIONAL REQUIREMENTS FOR TECHNICAL REPORTS ON DEVELOPMENT PROPERTIES AND PRODUCTION PROPERTIES.....	36
26.0) ILLUSTRATIONS .....	36

#### List of Tables

Table 1: Description of Mining Claims .....	8
Table 2: History Summary .....	15
Table 3: Historical Drilling Summary .....	26

#### List of Figures

Figure 1: Location Map .....	9
Figure 2: Claims Map.....	10
Figure 3: General Geological Setting .....	16
Figure 4: Timeline of evolution, Timmins area .....	18
Figure 5: Regional Geology .....	19
Figure 6: Property Geology .....	21
Figure 7: Depths of formation.....	22
Figure 8: Main orebodies of the area in relation with the major faults.....	23
Figure 9: Historical drilling.....	27

#### List of Schedules

- Schedule 1: Historical drilling
- Schedule 2: Mag survey and geophysical interpretation
- Schedule 3: I.P and resistivity maps

### **3.0) SUMMARY**

The Ogden property is situated in Ogden township, which is part of the Timmins mining camp. The property is located 12 km in a straight line to the SW of the city of Timmins, and is covered by NTS sheet 42A/06. It is made of eight unpatented mining claims totalling 1,120 ha. and expiring between December 31, 2010 and January 11, 2011. Assessment work required for claims renewal amounts to \$27,400; there are currently no assessment credits on the claims.

Knick Exploration Inc. acquired the property from North American Exploration Ltd. on June 1, 2009, in exchange for a cash payment of \$6,206 and 300,000 common shares of Knick. The property remains subject to two royalties: a 2% net smelter return (NSR) royalty on all smeltable minerals or metals extracted from the property, and a 2% gross overriding receipts (GOR) royalty on all diamonds extracted from the claims. One percent (1%) of either royalty can be bought back for \$1 million, and Knick has a right of first refusal on all or part of the remaining 1%.

To the best knowledge of the author there are no environmental liabilities pertaining to the Ogden property. The property is easily accessible, being traversed by the Wawiatin road off provincial highway #101. There is no mining infrastructure on the property. All the personal, services and equipment required to carry out exploration and eventually mine an orebody are readily available in the city of Timmins, which has a long, rich mining history.

From 1946 to 2004, several mining companies carried out exploration on the property, the main players being Tex-sol Exploration, Mattagami Lake Mines, Noranda Exploration, Inmet Mining Corporation and Haddington Resources. To date, a number of magnetic and IP surveys have been completed on parts of the property, as well as 24 diamond drill holes and reverse circulation holes totalling 2,045 m. Tex-Sol obtained the most interesting results, with three non-contiguous mineralized intersections of 12 g/t Au over 1.52 m in Hole #1 drilled in 1965. Subsequent attempts by Tex-Sol and later by Gossan Resources failed to duplicate these results.

Geologically, the property is located in the SE part of the Superior geological province, and more precisely in the Abitibi subprovince. In the Timmins area, the Abitibi subprovince is subdivided into nine assemblages with ages ranging from 2670 to 2730 Ma, the youngest being the sedimentary rocks of the Timiskaming Assemblage and the oldest the volcanic rocks of the Deloro Group.

The Ogden property is underlain by the volcanic rocks of the Deloro Group and the metasedimentary rocks of the Porcupine Group. The property is situated less than one kilometre south of the

Porcupine-Destor Fault, which marks the boundary between the Deloro and Tisdale groups. Although the bulk of the gold produced from the Timmins mining camp, approximately 68 million ounces, was mined from the Tisdale Group, several gold occurrences and mines can be found in the Deloro Group. In the 1930s and 1940s, the Naybob and Faymar mines, both located in the Deloro Group, produced 178,650 tonnes and 108,800 tonnes respectively at grades of 6.2 and 6.3 g/t Au. This is an indication of the potential of the Deloro Group.

Exploration on the Ogden property will be aimed at two types of deposit:

- The Archean mesothermal type, as the property contains several lithological contacts and faults. This is the type of orebody generally seen in the Tisdale Group of rocks;
- The Archean hypothermal type or greenstone-hosted quartz-carbonate vein deposit, as seen in Tex-Sol's Hole # 1, with gold values associated with a silicified fragmental rock in an altered ultramafic rock.

Since its acquisition by Knick, line cutting, with corresponding magnetic and VLF surveys and 25.4 km of induced polarization (I.P) have been completed in the central part of the property. Two strong magnetic anomalies were located along with major faulting. One of them, the most westerly, is probably the Mattagami River Fault, which marks the limit between the sediments and volcanics. Several moderate to strong VLF anomalies oriented almost perpendicular to the main structures probably represent subsidiary faulting.

The I.P survey revealed 4 clusters of anomalies. Once cultural effects (power line, roads etc) removed, real anomalies remain, located at depth varying from 30 to 80 m. At these depths they can not be explained by trenching or prospecting, but only by diamond drilling.

The Ogden property geology is a favourable environment for gold deposits, as it is located close to the Porcupine-Destor Fault and covers both tholeiitic and calc-alkalic metavolcanic rocks in contact with sedimentary rocks along the Mattagami River Fault. Several cherty iron formations have also been mapped on the property in the past and can potentially have trapped gold mineralization.

The author strongly believes that a systematic exploration program is required to determine the property's gold potential. A two-phase exploration program is recommended. The first phase will include line cutting followed by IP and magnetic surveys over the entire property. A geological survey over the main anomalous zones and a satellite photo interpretation will help define the best drill targets. Finally, diamond drilling is recommended to test the selected anomalies.

If warranted, a second phase consisting exclusively of diamond drilling is recommended to test the remaining anomalous zones and any other zones with a favourable geological setting. A detailed budget for both phases is as follows:

<b>Ogden Proposed Budget</b>					
<b>Phase I: Geology, geophysics and drilling</b>	<b>Quantity</b>	<b>Unit</b>	<b>Unit cost</b>	<b>Total</b>	
Program preparation	5	days	\$650	\$3,000	
Acquisition of a high definition satellite photo				\$5,000	
Line cutting	114	km	\$450	\$51,300	
Magnetic, total field and gradient survey, with VLF	114	km	\$150	\$17,100	
Induced polarization survey, x= 50 m, n=1 to 6	121	km	\$1,500	\$181,500	
Geophysical report, Mag, VLF and IP				\$10,000	
Geological survey, 15 days at \$1,200/day all inclusive	15	days	\$1,200	\$18,000	
Diamond drilling to test any anomalous zones discovered (\$150/m, all inclusive)	3500	m	\$150	\$525,000	
Report at the end of phase 1 and filing for statutory purposes				\$15,000	
Contingency (average of 15%)				\$123,885	
				<b>Total Phase I</b>	<b>\$949,785</b>
<b>Phase II Drilling</b>					
Program preparation	5	days	\$650	\$3,250	
Diamond drilling (\$150/m, all inclusive)	6500	m	\$150	\$975,000	
Report at the end of phase 2, and filing for statutory purposes				\$20,000	
Contingency (average of 15%)				\$149,738	
				<b>Total Phase II</b>	<b>\$1,147,988</b>
				<b>Total Phases I and II</b>	<b>\$2,097,773</b>

## **4.0) INTRODUCTION**

### **4.A) RECIPIENT**

This NI 43-101 technical report for the Ogden property has been prepared at the request of Knick Exploration Inc. ("Knick").

### **4.B) OBJECTIVES**

This report is an update of the report entitled "NI 43-101 Technical Report pertaining to: The Ogden Property, Timmins area, Timmins Mining Camp, Prepared for Knick Exploration Inc." dated July 8, 2009. It provides a summary of the scientific and technical information on exploration carried out on the Ogden property both historical and recent. Knick may use this report for the purpose of raising exploration funds, as requested by the regulatory authorities.

### **4.C) SOURCES OF DATA AND INFORMATION**

This report is based on the documentation provided by Knick and on the statutory work filed with the Ministry of Northern Development and Mines of Ontario. A complete, detailed list of the documentation used is given in Item 23.0, "References".

### **4.D) SCOPE OF THE PERSONAL INSPECTION BY THE QUALIFIED PERSON**

Donald Théberge, Eng., M.B.A., is responsible for all the sections of this technical report. He visited the property on May 12, 2009. He was accompanied by Jacques Brunelle and Gordon Enriksen geol., respectively President and Vice-President of Knick Exploration Inc. About two hours were spent on the property. No outcrops or historical drill sites were observed during the visit. As only geophysical surveys were completed on the central part of the property, a new property visit was not deemed necessary.

### **4.E) UNITS USED IN THIS REPORT**

Unless otherwise indicated, measurements in this report are in metric units, amounts are in Canadian dollars, and coordinates are in the UTM system, NAD83, Zone 17.

## **5.0) RELIANCE ON OTHER EXPERTS**

For the magnetic and VLF survey interpretation, the author relied on Marc Boivin, P. Geo., geophysicist.

## **6.0) PROPERTY DESCRIPTION AND LOCATION**

### **6.A) AREA**

The property consists of eight unpatented claims that cover approximately 1,120 ha.

### **6.B) LOCATION**

The property is located in the eastern part of Ontario, approximately 12 km in a straight line SW of the city of Timmins. Geographically, it is situated in NTS<sup>1</sup> sheet 42A/06, in the SW part of Ogden Township. The property location is shown in Figure 1, "Location Map", on the next page.

### **6.C) TYPE OF MINERAL TENURE**

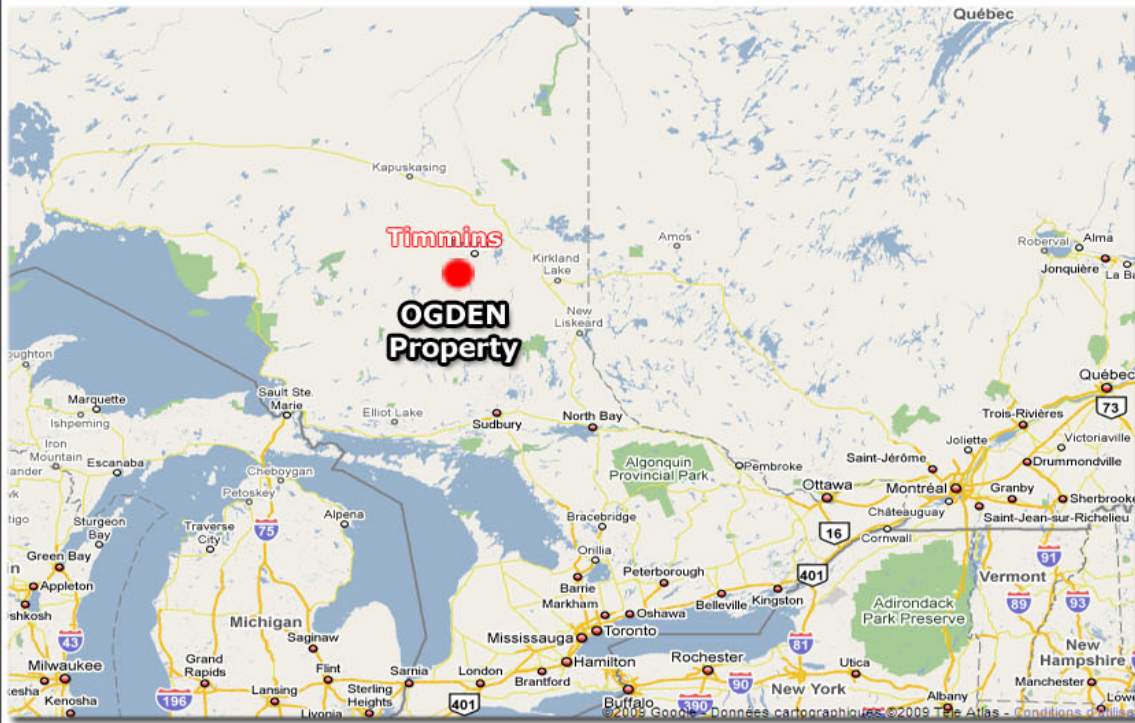
The Ogden property consists of one block of eight unpatented claims, all located in Ogden township and registered to the name of Knick Exploration Inc. These claims are described in Table 1 below:

**TABLE 1: DESCRIPTION OF MINING CLAIMS**

<b>Claim Number</b>	<b>Units</b>	<b>Hectares</b>	<b>Due Date</b>	<b>Assessment Work Required</b>	<b>Total Reserve</b>
4243882	16	256	31-12-2010	\$6,400	\$ 0
4243883	4	64	09-01-2011	\$,600	\$ 0
4243884	2	32	09-01-2011	\$800	\$ 0
4243885	10	160	31-12-2010	\$4,000	\$ 0
4243886	12	192	31-12-2010	\$4,800	\$ 0
4243887	12	192	31-12-2010	\$4,800	\$ 0
4243888	8	128	29-01-2011	\$3,200	\$ 0
4243889	6	96	29-01-2011	\$2,400	\$ 0
Total	70	1,120		\$27,400	\$ 0

The mining claims are shown in Figure 2, "Claims Map".

<sup>1</sup> NTS: National topographic system

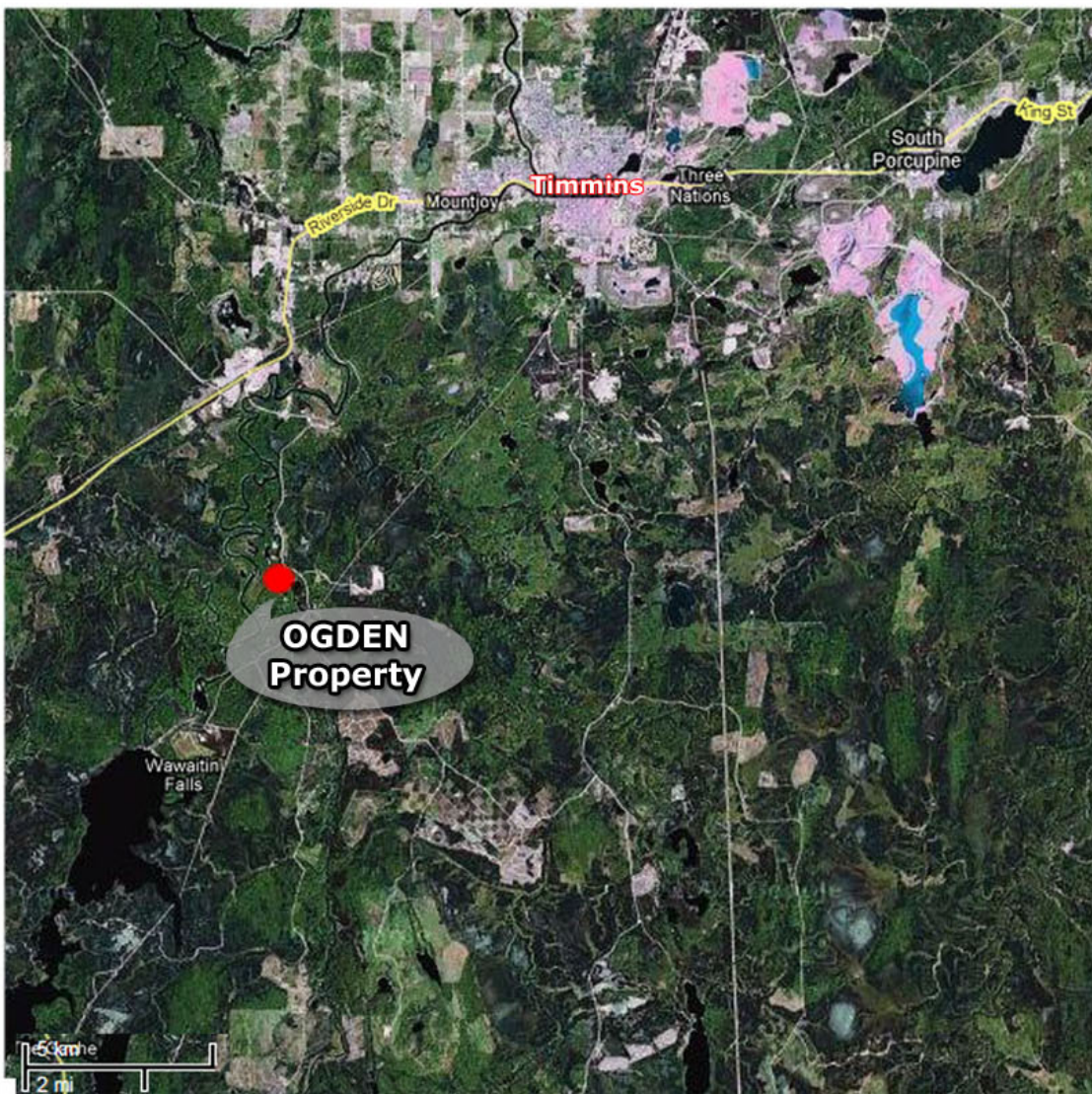


Source:

**ONTARIO**  
CANADA

MINISTRY OF NORTHERN  
DEVELOPMENT AND MINES  
PROVINCIAL MINING  
RECORDER'S OFFICE

PROPERTY



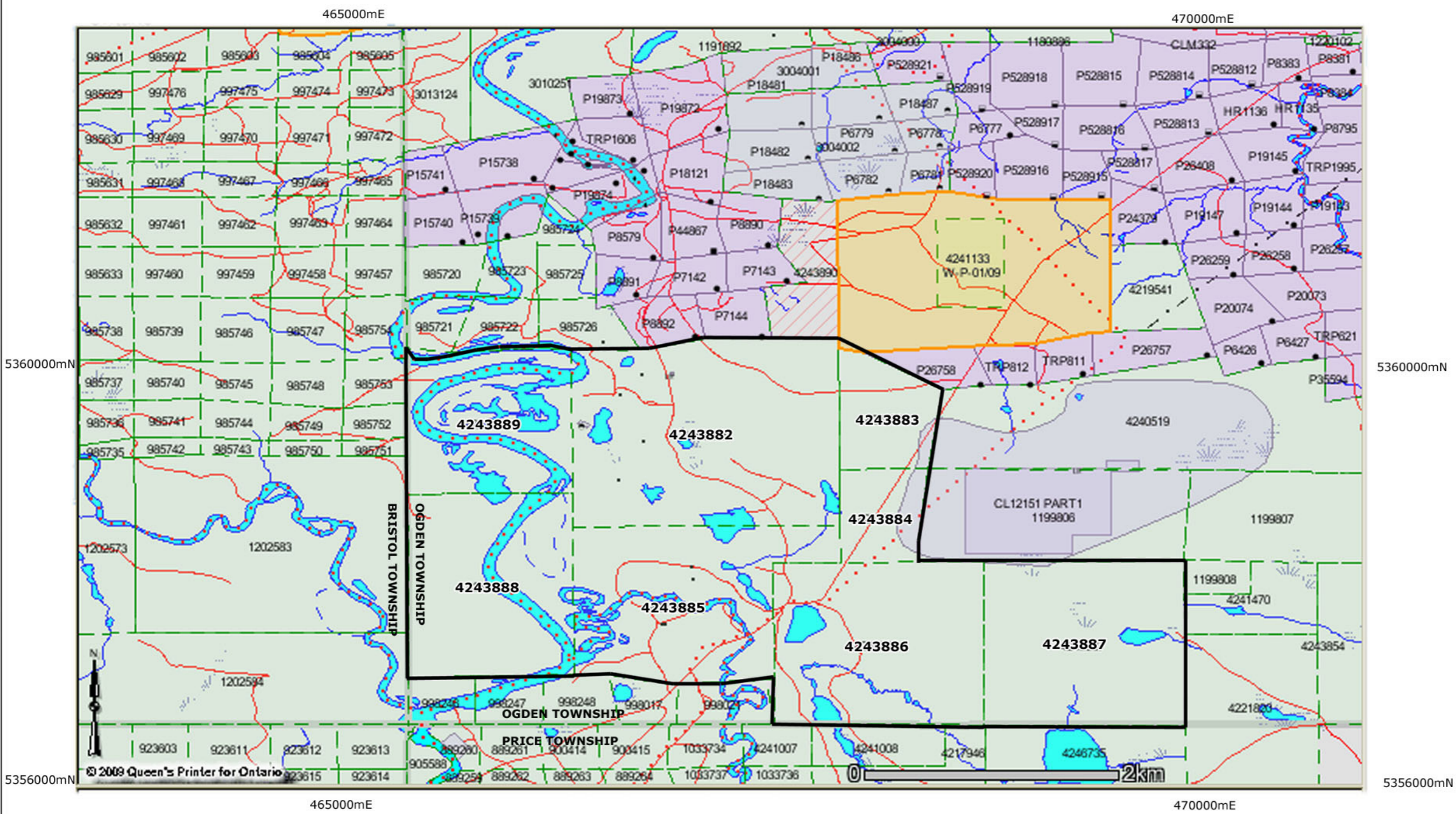
***Knick Exploration Inc.***

**LOCATION MAP**

OGDEN PROPERTY

PREPARED BY: *SOLUMINES*  
DATE: 2009/16/06  
TOWNSHIP: OGDEN

**FIGURE: 1**



Source:  
**ONTARIO**  
 CANADA  
 MINISTRY OF NORTHERN  
 DEVELOPMENT AND MINES  
 PROVINCIAL MINING  
 RECORDER'S OFFICE  
 2009/16/06

Property



*Knick Exploration Inc.*

**CLAIMS MAP**  
 OGDEN PROPERTY  
 OGDEN TOWNSHIP

PREPARED BY: *SOLUMINES*  
 DATE: 2009/20/06

**FIGURE 2**

#### **6.D) NATURE AND EXTENT OF THE ISSUER'S TITLES**

Pursuant to an option agreement signed on June 1, 2009 between North American Exploration Ltd. and Knick Exploration Inc., Knick acquired a 100% interest in the property under the following conditions:

- A cash payment of \$6,206 at signature; and
- 300,000 common shares of Knick Exploration Inc.

#### **6.E) PROPERTY BOUNDARIES**

The property boundaries have not been surveyed.

#### **6.F) LOCATION OF THE MINERALIZED ZONES**

There are no mineralized zones with estimated resources on the property. However, one drill hole, Hole #1, drilled by Tex-Sol Explorations Ltd. in 1965, returned the following values:

- 12 g/t Au over 1.52 m from 103.66 to 105.18 m<sup>2</sup>;
- 12 g/t Au over 1.52 m from 106.71 to 108.23 m;
- 12 g/t Au over 1.52 m from 111.28 to 112.8 m, in a silicified fragmental tuff.

This hole is located at UTM coordinates 467924E / 5359457N, Zone 17, Nad 27 in the NE part of the property.

#### **6.G) ROYALTIES**

The property remains subject to two royalties: a 2% NSR<sup>3</sup> on all smeltable minerals or metals extracted from the claims, and a 2% GOR<sup>4</sup> royalty on all diamonds extracted from the claims. Knick can buy back a 1% of either royalty for \$1,000,000 at any time, and has a right of first refusal on all or part of the remaining 1%.

---

<sup>2</sup> The original data was in imperial units.

<sup>3</sup> NSR: Net smelter return

<sup>4</sup> GOR: Gross overriding receipts

#### **6.H) ENVIRONMENTAL LIABILITIES**

To the knowledge of the author, there are no environmental liabilities pertaining to the Ogden property.

#### **6.I) REQUIRED PERMITS**

No permits are required for the exploration program. However, all the environmental and mining regulations of Ontario should be respected.

### **7.0) PHYSIOGRAPHY, ACCESSIBILITY, INFRASTRUCTURES AND CLIMATE**

#### **7.A) TOPOGRAPHY, ELEVATION, VEGETATION AND DRAINAGE**

The property shows a relatively flat topography, with a maximum elevation of 310 m and a minimum elevation of 275 m. The average elevation is approximately 290 m above sea level. The Mattagami River crosses the west part of the property and is generally oriented north-south. Like much of the area, the property is covered by a mix of spruce, fir, birch and alder.

#### **7.B) ACCESSIBILITY**

The equipment required for stripping and drilling can be easily transported to the property, which is located approximately 12 km SW of the city of Timmins. The property is easily accessible via Wawiatin road, a gravel road that originates in Timmins, or via a secondary road off of provincial highway #101, at UTM coordinates 466 200E / 5 364 260 N, Zone 17, Nad 83. The topography and access roads to the property are illustrated in Figure 1, "Location Map".

#### **7.C) INFRASTRUCTURE**

There is no mining infrastructure on the property. As described in the previous section, the property is easily accessible via gravel road from the city of Timmins or provincial highway #101. Timmins, which has a long mining history, has a population of 45,000. All exploration and mining services are

readily available in Timmins. Equipment can be transported from its loading point to the Ogden property by road.

## 7.D) CLIMATE<sup>5</sup>

The property is in a humid continental climate zone characterized par warm summers, mainly in July, cold winters and abundant rain. Daily average temperatures range from +17.4<sup>0</sup> C in July to -17.5<sup>0</sup> C in January. Annual precipitation averages 558 mm of rain and 313 cm of snow. These are normal conditions in the northern Ontario context and do not hamper exploration or mining work.

## 8.0) HISTORY

Exploration was first reported on the property in 1946 by Goldmont Porcupine Mining Syndicate Ltd., with a magnetic survey in the SE part of the current Ogden property. Four holes were recommended, but no further follow-up was reported. In 1958, Hollinger Mines Ltd. drilled four holes approximately 500 m N of the NW property boundary. Sedimentary rocks, mainly in the form of greywackes, were intercepted. The drill core was completely sampled; unfortunately, the assays results were not reported.

From 1958 to 1964, no exploration was reported. In 1964, Tex-Sol Explorations Ltd. did ground magnetometer and electromagnetic surveys. The magnetometer survey revealed an anomaly varying in strength from 8,000 to 12,000 gammas on a background of 500 to 700 gammas in the NE part of the property. The EM survey did not revealed any anomalies. The geophysical surveys were followed in 1965 by three diamond drill holes totalling 1,095 feet (333.8 m). The holes, numbered 1, 2 and 3, cut mainly ultramafic rocks, reported as soapstone in the drill logs. Three gold intersections were obtained in Hole #1, with:

- 0.35 oz Au/ton over 5' from 340' to 345';
- 0.35 oz Au/ton over 5' from 350' to 355'; and
- 0.35 oz Au/ton over 5' from 365' to 370'<sup>6</sup>

in what is described as a “*siliceous fragmental, fine pyrite throughout, pepper and salt*” in an ultramafic unit (soapstone). Hole #2, drilled 140' (42.7 m) north of Hole #1 with the same dip (-45°)

---

<sup>5</sup> From: [http://www.climate.weatheroffice.ec.gc.ca/climate\\_normals/results\\_f.html](http://www.climate.weatheroffice.ec.gc.ca/climate_normals/results_f.html) climatic average for the Timmins area.

<sup>6</sup> Or in metric units:      12 g/t Au over 1.52 m from 103.66 to 105.18 m;  
                                 12 g/t Au over 1.52 m from 106.71 to 108.23 m;  
                                 12 g/t Au over 1.52 m from 111.28 to 112.8 m,

and azimuth (N) failed to return any gold values. Hole #3, a vertical hole drilled 50' (15.2 m) E of Hole # 2, intercepted fragmental rocks, but no assays are reported.

At around the same time in 1967, H.D. Carlson mapped Ogden Township on behalf of the Ontario Geological Survey. Eleven years later, the same geologist, H.D Carlson, did a VLF-EM-16 survey over the NE part of the property. Several anomalies were detected, but were determined to be caused by variations in overburden thickness. The property was later optioned by Mattagami Lake Mines, and an IP survey was completed, with the following technical parameters: dipole-dipole electrode configuration, electrode separation of 200 feet, with  $n = 1$  to 4. Three weak anomalies were discovered. No further follow-up was done by Mattagami Lake Mines.

In 1980, Gossan Resources Ltd., held the NE part of the actual Ogden property. An evaluation report was completed by R.J Bradshaw, and four drill holes were recommended to test the gold intersections obtained by Tex-Sol Exploration in 1965. One year later, in 1981, five holes numbered C-81-1 to C-81-5 were drilled for a total of 2,000' (609.8 m). These five holes were drilled in the vicinity of the hole that intersected three gold values of 12 g/t over 1.52 m in 1965. However, they failed to confirm the Tex-Sol gold intersections and, in fact, to return any anomalous gold values.

In 1982, D.R. Pyke carried out river and stream sediment sampling on his own claims located along the Grassy River, in the SW part of the Ogden property. The goal of this survey was to verify the possibility of a gold placer occurrence. Nineteen samples were collected. Only one anomalous value of 3 g/t Au was obtained from the heavy mineral concentrate in Sample #P-60.

Noranda Exploration was the next company to carry out exploration, performing an exploration program on the N part of the property in 1985, with nine RC<sup>7</sup> holes totalling 245.9 m for an average depth of 27 m. Au and Ag analytical results for bedrock chips did not return Au or Ag values; heavy mineral concentrates were sent to the laboratory but no results are indicated in the report.

From 1986 to 1996, no exploration work was reported. In 1997-8, Inmet Mining Corporation explored the Croxall-Kangas project, which covers the W part of the current Ogden property. Inmet did 32.4 km of magnetic surveying. Two intrusions and two NE trending faults were located. The magnetic survey was followed by 19 km of Phase IP<sup>8</sup> covering the SW part of the property; several weak IP anomalies were discovered. In 1998, Inmet did diamond drilling on the same Croxall-Kangas project, but this time, the holes were drilled to the S of the Ogden property. During the same period, in 1998,

---

<sup>7</sup> RC: Reverse Circulation Drill Hole.

<sup>8</sup> IP: Induced Polarization

Haddington Resources completed 44.6 km of magnetic and VLF surveying over the N part of the property. One major EM anomaly likely due to a fault was located, along with four magnetic highs interpreted as an iron formation. An IP survey was recommended, but apparently was not executed.

Still in 1998, Noront Resources completed 3.7 km of magnetic and VLF surveying on a property adjacent to the property held by Haddington Resources, to the W. The VLF did not detect any anomalies, and one magnetic anomaly was interpreted as a probable iron formation.

The latest exploration was reported by Porcupine Joint Venture (between Placer Dome and Kinross Gold Corp.), with one hole totalling 200 m drilled in the NE part of the property. No gold values were intercepted.

**TABLE 2: HISTORY SUMMARY**

Year	Company / Year	Work	Remarks
1946	Goldmont Porcupine Mining Syndicate Ltd.	Magnetic survey over the SE part of the current Ogden property.	4 holes recommended, no follow-up reported.
1958	Hollinger Mines Ltd.	4 holes drilled 500 m N of the property.	Assays results not reported.
1964	Tex-Sol Exploration Ltd.	Mag anomaly located.	Drill holes recommended
1965		3 drill holes totalling 333.8 m	Hole #1 cut three 0.35 oz Au / ton over 5' intersections.
1967	Ontario Geological survey	Mapping of Ogden Twp by H.D. Carlson	
1978	Carlson Claims	EM VLF survey	Several anomalies due to variations in overburden thickness
	Mattagami Lake Mines	IP survey over the Carlson claims	3 weak anomalies discovered.
1980	Gossan Resources Ltd.	Evaluation report by R.J Bradshaw	4 drill holes recommended
1981		5 drill holes totalling 609.8 m	Holes drilled in the vicinity of the Tex-Sol drill hole intersection. Holes failed to return any gold values.
1982	Pyke claims	River and stream sediment sampling	3 g/t Au in one sample of heavy mineral concentrate.
1985	Noranda Exploration	9 reverse circulation holes	No gold values in bedrock chips. Assay results in heavy mineral concentrate, not provided.
1997	Inmet Mining Corp.	32.4 km of magnetic surveying	2 intrusions and 2 NE trending faults discovered.
		19 km of IP surveying	Several weak anomalies discovered
1998	Haddington Resources	44.6 km of Mag and VLF surveying over the N part of the property	One EM anomaly probably due to a fault, and an iron formation located.
	Noront Resources	3.7 km of magnetic and VLF surveying	No VLF anomaly detected, one Mag anomaly interpreted as an iron formation
2004	Porcupine Joint Venture	One DDH totalling 200 m in the NE part of the property.	No gold values intercepted.

## 9.0 GEOLOGICAL SETTING

### 9.1) REGIONAL GEOLOGY

The Ogden property is located in the SE part of the Superior geological province, itself situated at the heart of the Canadian Shield. The Superior province extends from Manitoba to Quebec, and is mainly made up of rocks Archean in age (>2.5Ga). Generally, metamorphism is at the greenschist facies, except in the vicinity of the intrusive rocks, where it can attain the amphibolite to granulite facies. Figure 3, "General Geological Setting", shows the location of the property in the south-eastern part of the Superior province.

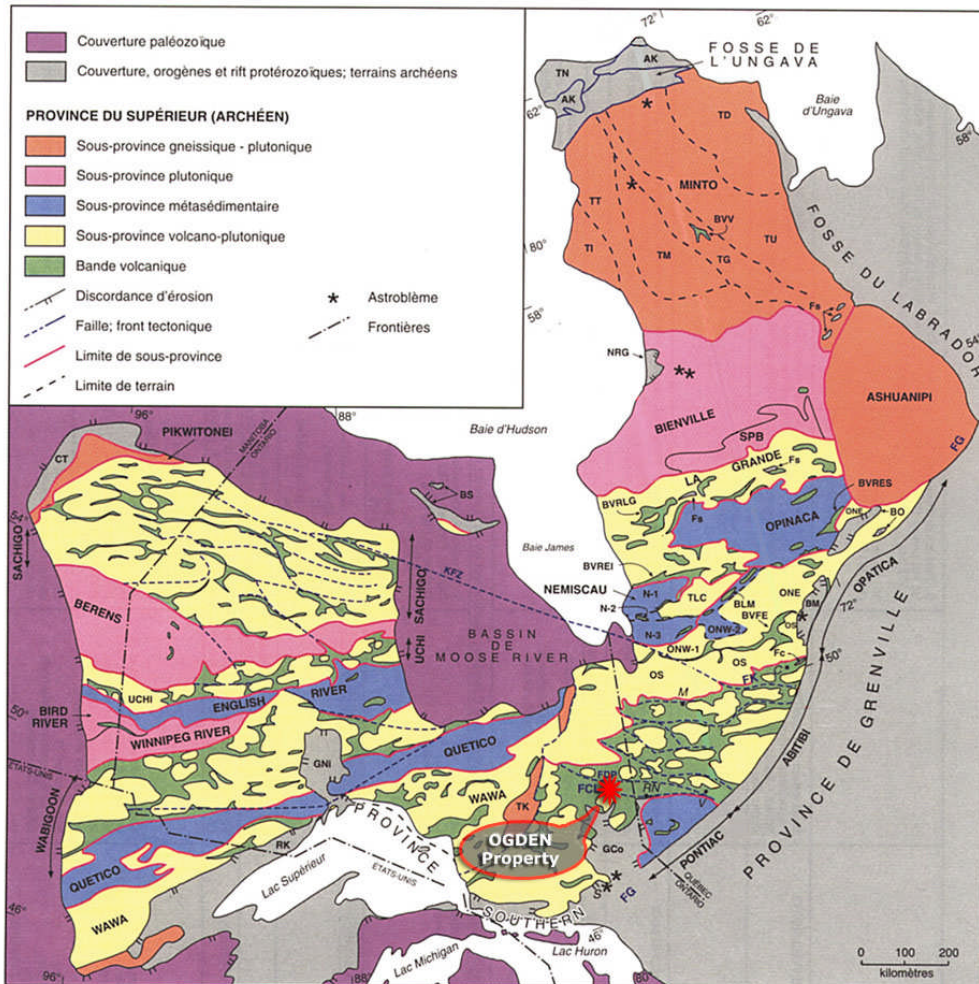


FIGURE 3: GENERAL GEOLOGICAL SETTING

## 9.2) LOCAL GEOLOGY

*"In the immediate Timmins area, the Abitibi subprovince is subdivided into 9 assemblages with ages ranging from the youngest, the Timiskaming assemblage sedimentary rocks that range in age from 2676 to 2670 Ma, to Deloro assemblage rocks dated at 2730 to 2724 Ma. Timiskaming sediments were deposited unconformably on deep water turbidite sediments of the Porcupine assemblage. Coeval with the Porcupine sediments are the "Krist" felsic fragmental rocks dated at 2687 Ma. The Krist is considered to be the extrusive equivalent to the quartz feldspar porphyries in the Timmins area of similar age.*

*Underlying Tisdale assemblage rocks have an age of 2710 to 2706 Ma and consist predominantly of mafic to felsic volcanic rocks and are further subdivided into a series of nine sequence formations. The Tisdale assemblage rocks, particularly mafic volcanic rocks with high iron tholeiitic affinity, are the most productive for gold mineralization. Variolitic lavas of the Vipond Formation in the Tisdale assemblage provide useful volcanostratigraphic marker horizons. Deloro assemblage rocks immediately underlie the Tisdale assemblage and consist of mafic to felsic volcanic rocks with minor banded iron formation and clastic sediments near the top of the sequence.*

*The Shaw dome is a structural feature south of Timmins that juxtaposes iron formation and Deloro assemblage rocks against Tisdale assemblage komatiitic rocks, yielding deposits of magmatic massive sulphide and nickel mineralization. Coincident with the north boundary of the Shaw dome, the Porcupine Destor Fault is a major structural feature that is spatially related to many of the Timmins gold deposits."<sup>9</sup>*

The immediate vicinity of the property is underlain by the rocks of the Tisdale and Deloro Groups. They are in mutual contact along the Porcupine – Destor fault, which is located immediately north of the Ogden property. The Deloro Group forms the oldest rock assemblage in the Timmins area and is immediately overlaid by the Tisdale formation. The timeline for the evolution<sup>10</sup> in the Timmins area is illustrated in Figure 4 below:

---

<sup>9</sup> Excerpt from the OGS website: [http://www.mndm.gov.on.ca/mines/ogs/resgeol/geology/tim\\_e.asp](http://www.mndm.gov.on.ca/mines/ogs/resgeol/geology/tim_e.asp)

<sup>10</sup> Excerpt from: Bateman, R., Ayer, J.A., Dubé, B., and Hamilton, M.A., 2005: The Timmins-Porcupine Gold Camp, Northern Ontario: the Anatomy of an Archean Greenstone Belt and its Gold Mineralization: Discover Abitibi Initiative; Ontario Geological Survey, Open File Report 6158, 90 p.

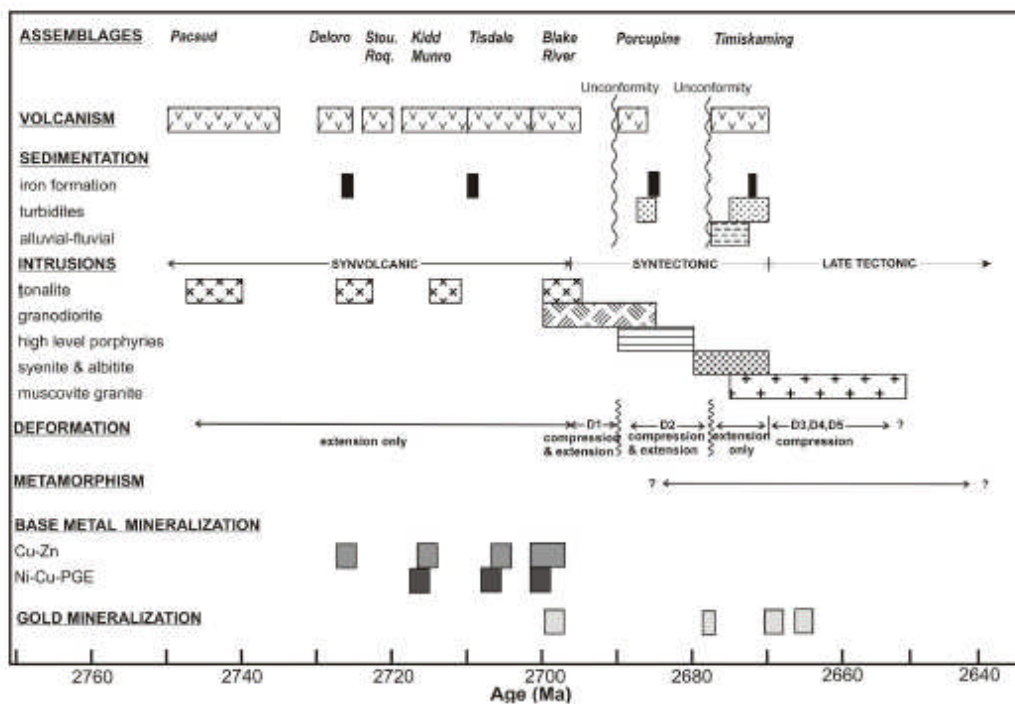


FIGURE 4: TIMELINE OF EVOLUTION, TIMMINS AREA

The geology and deposits of the area are illustrated in Figure 5, "Regional Geology", on the next page.

**9.3) PROPERTY GEOLOGY**

The Ogden property is underlain by sedimentary rocks of the Porcupine Group and the volcanic rocks of the Deloro Group. The west part of the property is covered by clastic and chemical sedimentary rocks which are believed to be part of the Porcupine Sedimentary Group. They are in contact to the east with the volcanic rocks of the Deloro Group along the north-south striking Mattagami River Fault. The E-W striking Bristol fault is located immediately north of the property, in sedimentary rocks. This same Bristol fault has been recognized 7 km further west on the Timmins West property of Lake Shore Gold Inc, approximately 150 m north of the deposit.<sup>11</sup>

The geology east of the Mattagami River Fault, which is part of the Deloro Group, is divided into two units, north and south. The north unit is the domain of the calc-alkalic felsic to mafic metavolcanic

<sup>11</sup> Timmins West project: Probable mineral reserve of 3.4M tonnes @ 7.6 g/t Au. Information obtained from: Darling, G., Kociumbas, M., Sullivan, J.R., Lavigne, J.J., Hayden, A.S., Small, A.S., Butler, D., Kordgharachorloo, F., Hall, R.A., Schmidt, P.R., 2007: NI 43-101 Technical Report, Timmins West Project, Timmins Ontario, Lakeshore Gold Corp. Filed on SEDAR.



rocks, in which several horizon of cherty iron formation occur. The north part of this rock series ends at the Porcupine-Destor Fault, less than one kilometre north of the Ogden property. The south unit is composed of tholeiitic mafic to intermediate metavolcanic rocks. All the rock formations on the property are cut by north-south trending diabase dykes. A small granodioritic stock, about 1 km x 2 km, occurs several hundred metres north-east of the property.

An airborne geophysical survey (electromagnetic and magnetic) performed in 1988 by Geoterrex on behalf of Ontario Geological Survey did not revealed any electromagnetic anomalies. The magnetic survey roughly outlined the geological units already described. The strike of the formations is generally E-W with a dip close to vertical. Outcrops on the property are very scarce; from historical drilling, overburden depth varies from a maximum of 44 m to a minimum of 1.5 m. The property geology is illustrated in Figure 6 on the next page.

## **10.0) DEPOSIT TYPES**

Historically, the Timmins district has been a major gold producer, with over 68 million ounces of gold mined in the immediate vicinity of Timmins. Almost all the gold mines in the Timmins area are located in the Tisdale Group, which overlies the Deloro Group. Over the years, many gold showings have been found in the Deloro Group, along with two past producers, the Naybob and the Faymar mines, located in Ogden and Deloro townships respectively.

The Naybob<sup>12</sup> mine produced 238,000 tonnes grading 6.3 g/t Au and 0.6 g/t Ag from 1932 to 1945; the Faymar<sup>13</sup> mine produced a total of 108,800 tonnes grading 6.3 g/t Au and 3.8 g/t Ag from 1940 to 1942, as well as 635 tonnes recovered in 1979 during crown pillar recovery.

Generally, the gold deposits in the Tisdale Group are of the Archean mesothermal type, where the gold mineralization is better developed in areas of structural heterogeneity such as lithological contacts, and near intrusions.

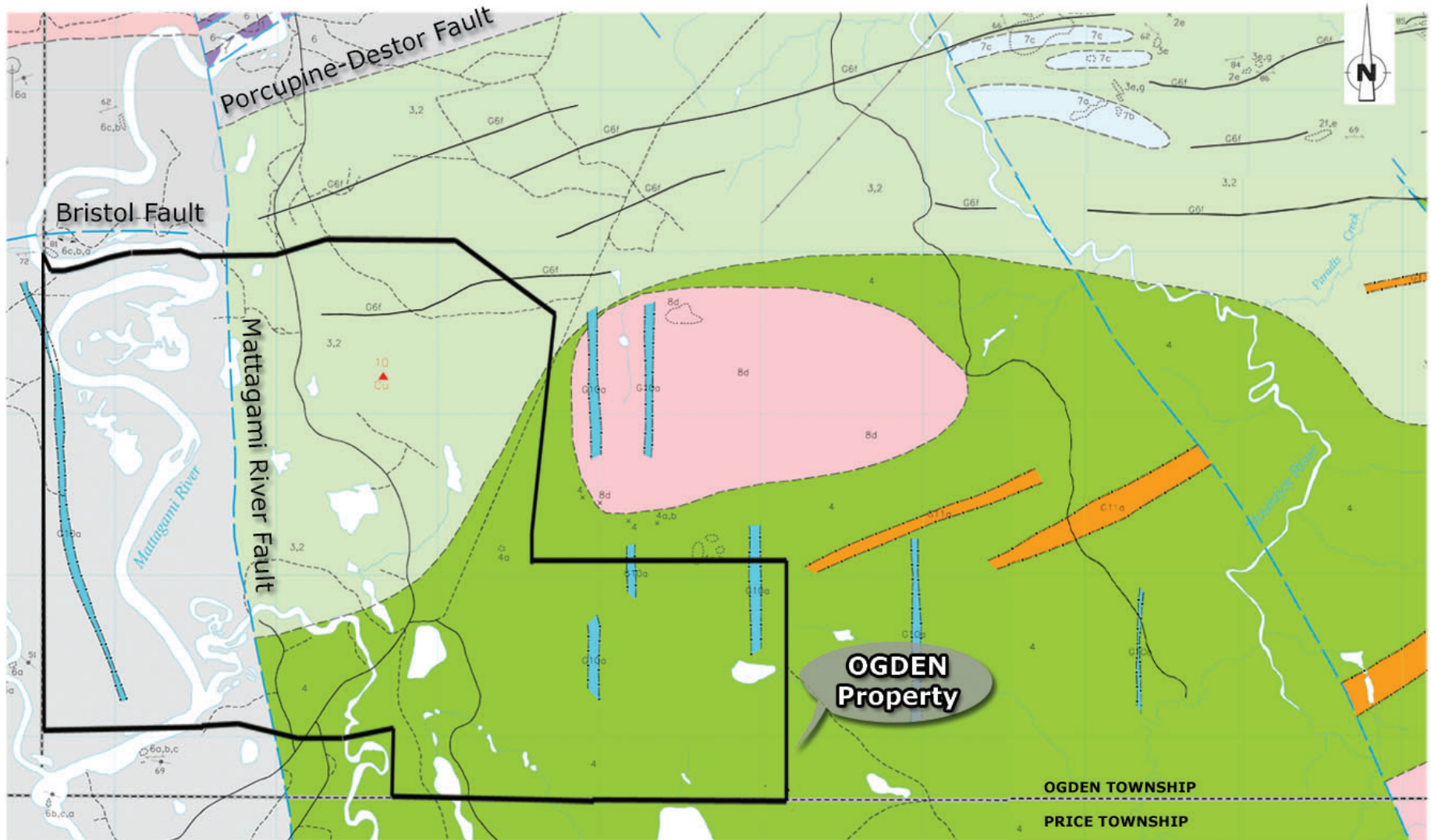
However, in 1967, Carlson, who mapped Ogden, Deloro and Shaw townships, described four types of gold occurrences in the Deloro Group of rocks:

- 1) *In lensing quartz and quartz carbonates veins in sheared volcanic rocks in the general vicinity of sialic porphyry dykes;*
- 2) *In quartz stringers which appear to occupy tension fractures of no great lateral extent near the contacts of some greenstone flow rocks and in some porphyry dykes;*

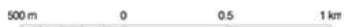
---

<sup>12</sup> Information obtained from the OGS website: <http://www.geologyontario.mndm.gov.on.ca/gosportal/gos>

<sup>13</sup> Information obtained from the OGS website: <http://www.geologyontario.mndm.gov.on.ca/gosportal/gos>



Scale 1:40 000



PROPERTY

From: Vaillancourt, C., Pickett, C.L. and Daniel, E. 2001: Precambrian Geology, Timmins West - Bristol and Ogdén townships; Ontario Geological Survey, Preliminary Map P. 3436, scale 1: 20 000.

ONTARIO  
CANADA



UNCONFORMITY

PRECAMBRIAN  
PROTEROZOIC  
MESOPROTEROZOIC

11 Mafic Intrusions  
11a Albita swarm: diabase dikes

INTRUSIVE CONTACT  
PALEOPROTEROZOIC

10 Mafic Intrusions  
10a Matachewan swarm: diabase dikes

ARCHAIC

8 Metamorphosed Felsic and Intermediate Intrusive Rocks  
8c Granodiorite

INTRUSIVE CONTACT

6 Clastic and Chemical Metasedimentary Rocks  
6a Wacka, minor anarite  
6b Siltstone  
6c Mudstone

4 Tholeiitic Mafic to Intermediate Metavolcanic Rocks  
4a Flow, massive  
4b Flow, pillowed  
4c Pillow breccia  
4d Flow-top breccia and hyalodastite

3 Calo-Alkalic Felsic to Intermediate Metavolcanic Rocks  
3a Flow, massive  
3b Flow-top breccia and hyalodastite  
3c Tuff and lapilli tuff  
3d Tuff breccia, heterolithic  
3e Quartz-diolase crystal tuff  
3f Carbonate-sericite schist

2 Calo-Alkalic Mafic Metavolcanic Rocks  
2a Flow, massive  
2b Flow, pillowed  
2c Pillow breccia  
2d Flow-top breccia and hyalodastite  
2e Tuff and lapilli tuff  
2f Tuff breccia, heterolithic  
2h Sericite schist

▲ Cu.....copper

SYMBOLS

- Area of bedrock outcrop
- Small bedrock outcrop
- Geological contact (observed)
- Geological contact (inferred)
- Geological contact (interpreted from geophysical information)
- Fault or lineament
- Graded bedding, top unknown (inclined, trend only)
- Brittle-ductile fault (inclined, trend only, vertical)
- Brittle-ductile fault (dextral displacement)
- Brittle-ductile fault (sinistral displacement)
- Schistosity (trend only, inclined, vertical)
- Graded bedding, top known, in direction of arrow
- Bedding, low contact: top unknown (inclined, vertical, trend only)

**Knick Exploration Inc.**

OGDEN PROPERTY

**PROPERTY GEOLOGY**

PREPARED BY: SOLUMINES  
DATE: 2009/16/06  
TOWNSHIP: OGDEN

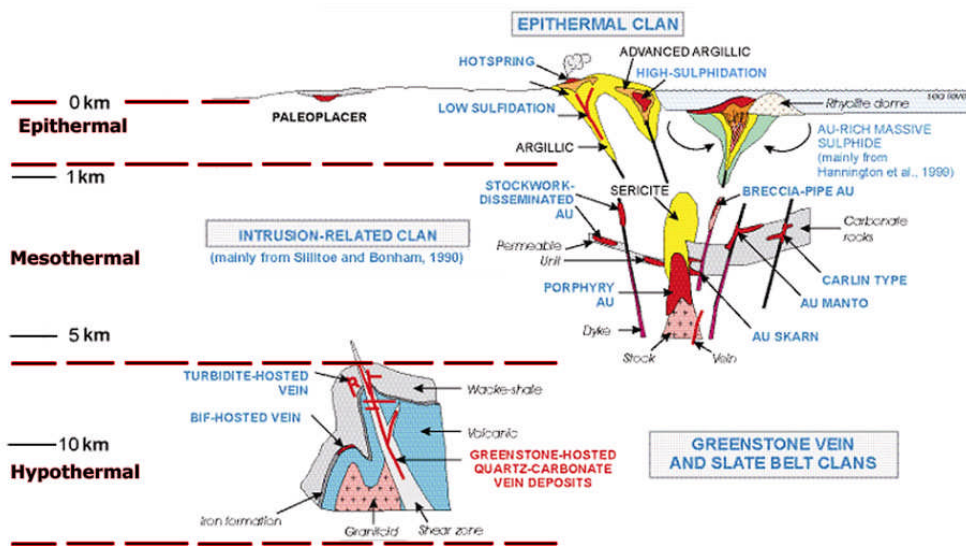
Figure:6

- 3) In coarse cubic pyrite associated with secondary quartz vein material which impregnates and cements fractured and brecciated cherty banded iron formation units;
- 4) In quartz-carbonates stringer and veinlet stockworks in zone of intense carbonate alteration of the volcanic rocks.<sup>14</sup>

Based on these observations, two types of deposit will be explored for on the Ogden property:

- 1) The Archean mesothermal type, as the property contains several lithological contacts and faults;
- 2) The Archean hypothermal type or greenstone hosted quartz-carbonate vein deposits, as seen in Tex-Sol's Hole #1, with gold values associated with a silicified fragmental rock in an altered ultramafic rock. See Item 11, "Mineralization", for the results obtained.

Figure 7<sup>15</sup> shows the depths of formation for the epithermal, mesothermal and hypothermal types of gold deposit. Figure 8<sup>16</sup> illustrates the orebodies of the area, with their relation to the main fault zones.

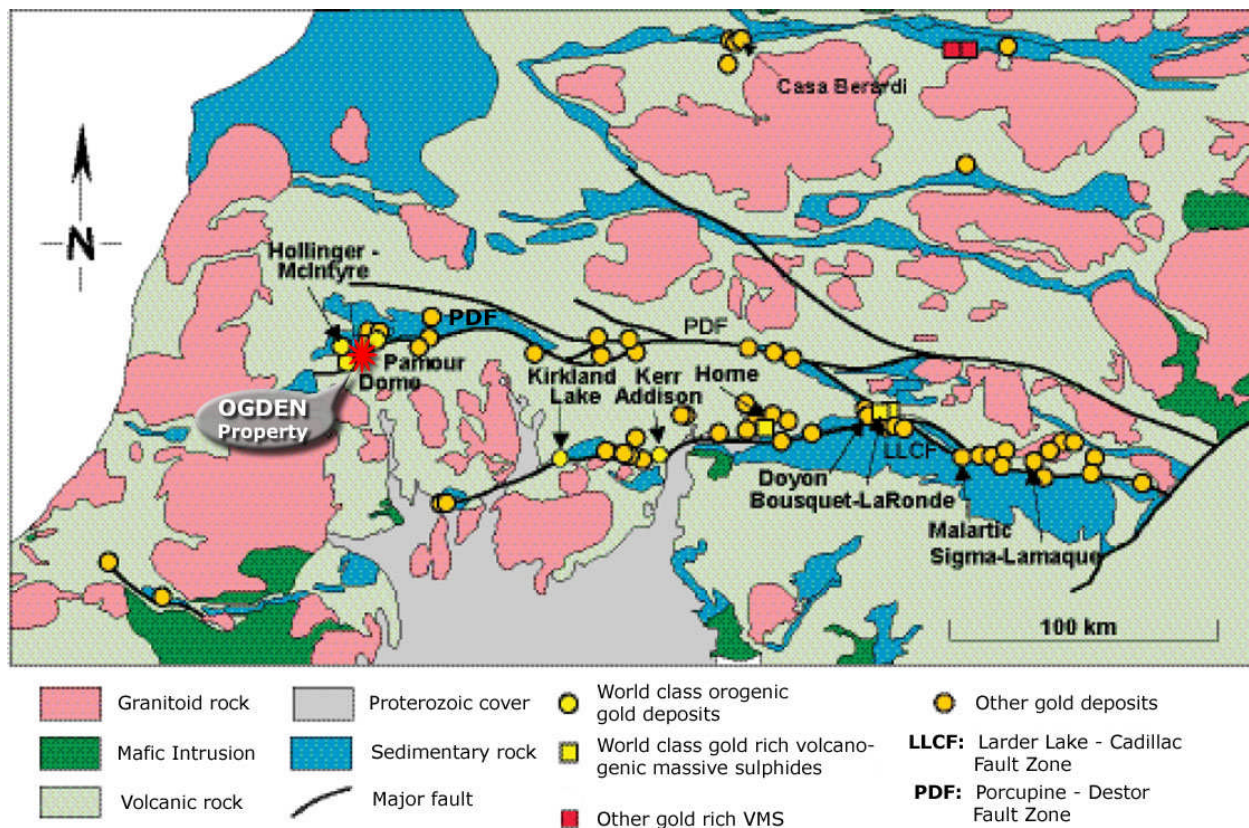


**FIGURE 7: DEPTHS OF FORMATION**

<sup>14</sup> From: Carlson, H.D., 1967: The geology of Ogden, Deloro and Shaw townships, district of Cochrane, Ontario. Open file report No. 5012.

<sup>15</sup> Figure from: Dubé, B., and Gosselin, P., 2007: Greenstone-hosted quartz-carbonates vein deposits, in Goodfellow, W.D., ed., Mineral deposits of Canada: A synthesis of major deposit types, district metallogeny, the evolution of geological provinces and exploration methods: Geological Association of Canada, Mineral Deposits Division, Special Publication No. 5, p 49-73.

<sup>16</sup> Figure from: Percival, J.A., 2007, Geology and metallogeny of the Superior Province, Canada, in Goodfellow, W.D., ed., Mineral deposits of Canada: A synthesis of major deposit types, district metallogeny, the evolution of geological provinces and exploration methods: Geological Association of Canada, Mineral Deposits Division, Special Publication No 5, p 903-928.



**FIGURE 8: MAIN OREBODIES OF THE AREA IN RELATION WITH THE MAJOR FAULTS**

### **11.0) MINERALIZATION**

There are no mineralized zones with estimated resources on the Ogden property. However, Hole #1 drilled by Tex-Sol in 1965 in the NE part of the property at UTM coordinates 467924E/5359457N, Zone 17, Nad 27, returned the following values:

- 12 g/t Au over 1.52 m from 103.66 to 105.18 m;
- 12 g/t Au over 1.52 m from 106.71 to 108.23 m;
- 12 g/t Au over 1.52 m from 111.28 to 112.8 m,

These gold values are associated with what is described in the drill log as a "silicified fragmental, fine pyrite throughout, pepper and salt", enclosed in what is described as a soapstone, which is probably an altered ultramafic. There is not enough information in the Tex-Sol report to clearly establish the relation between sample length and true thickness.

## **12.0) EXPLORATION**

Since acquiring the property, Knick has completed 48.7 km of line cutting followed by the corresponding magnetic and VLF<sup>17</sup> surveys on the central part of the property. An IP<sup>18</sup> survey totalling 25.4 km was completed from April 20, 2010 to June 16, 2010.

The magnetic survey revealed two high magnetic anomalies in the north and middle part of the survey. They are both strong and the middle is cut by a structural feature, probably a major fault, to the west. This is further confirmed by the interpretation map completed by geophysicist Marc Boivin, P.Geol. In fact, two major faults have been interpreted on the western part of the survey, the most westerly one being probably the Mattagami River Fault, which marks the boundary between the sediments to the west and the volcanics to the east.

Several VLF anomalies were located. They vary in strength from weak to strong, and possibly represent subsidiary structures, as they are generally oriented almost perpendicular to the main structures. A magnetic map and geophysical interpretation map can be found in Schedule 2 to this report. Magnetic and VLF surveys were completed by Knick's personnel.

The Phase I.P. survey was done using a dipole-dipole electrode configuration with a dipole dimension of 50 m with  $n = 1, 2, 3, 4, 5,$  and  $6$ . Survey was executed by crews of Rémy Bélanger Geophysics of Rouyn-Noranda, Québec and the interpretation was completed by Gérard Lambert, Eng. Four clusters of I.P. anomalies were located by the survey, they are described by G. Lambert, hereafter.

*"Cluster #1 is located in the southern portion of the grid, between L-677E and L-680E and between about 57500N and 57900N. It consists of about 9 individual I.P. anomalies and includes a number of I.P. anomalies that are believed to be of cultural origin, given the proximity of two power lines with grounded wires in that area. However the following anomaly is to be considered of probable bedrock origins: L-680E at about 57650N, far enough from any cultural sources so as to be considered legitimate. Reasonable amplitude on the phase and even possibly a slight decrease in resistivity. Depth to top at about 75m.*

*Cluster #2 is located in the central-west portion of the grid, between L-676E and L-680E and between about 58400N and 58600N. It consists of about 9 to 10 individual I.P. anomalies and includes a number of I.P. anomalies that are believed to be of cultural origin, given the proximity of one power line with grounded wires, along the access road leading to the hydro-electric plant to the south. However the following anomalies are to be considered of probable bedrock origins: (a) L-676E at about 58575N, far enough from any cultural sources so as to be considered legitimate. Nice*

---

<sup>17</sup> VLF: Very Low Frequency

<sup>18</sup> I.P: Induced Polarization

amplitude on the phase, and even possibly a slight decrease in resistivity. Depth to top at about 50m. (b) L-677E at about 58500N, far enough from cultural sources so as to be considered legitimate. Reasonable amplitude on the phase. Depth to top at about 75m. (c) L-679E at about 58450N, maybe not far enough from any cultural sources so as to be considered legitimate, but a very well-defined anomaly. Depth to top at about 80m.

Cluster #3 is located in the central-east portion of the grid, between L-682E and L-686E and between about 58800N and 59000N. It consists of about 8 individual I.P. anomalies and includes a number of I.P. anomalies that are believed to be of cultural origin, given the proximity of one power line with grounded steel towers and wires. However the following anomalies are to be considered of probable bedrock origins: (a) L-682E at about 58625N, far enough from any cultural sources so as to be considered legitimate. Well defined anomaly, nice amplitude on the phase, with a slight increase in resistivity. Depth to top at about 30m. (b) L-683E at about 59020N and L-684E at about 59000N. Somewhat weak but mainly because it is deep, located in what appears to be a bedrock depression through at maybe 70m depth. (c) L-685E at about 58850N and 58910N and L-686E at about 58825N. Two closely spaced responses near a bedrock depression, depth to top of about 30m with Phase getting definitely stronger at N-5 and N-6 (therefore at depth). An attractive target.

Cluster #4 is located in the northern portion of the grid, and is fairly broad and extensive, covering an area between L-676E and L-686E (one kilometer-long) and between about 594N and 600N (600 meters-wide). It is believed that no cultural contributions are present within this cluster. At least 24 anomalies can be recognized within this cluster. Some of them are deep (as on L-677E at 59400N, 59525N and 59800N) whereas a few are a little shallower (as on L-679E at 59675N). A few anomalies are associated with higher resistivity environment (as on L-682E and L-683E, from 59700N to 59900N). The northernmost anomaly on L-684E, near 59900N is quite nice.

The I.P. anomalies listed above probably originate from metallic accumulations in the form of disseminated to stringer sulphides at relatively substantial depths (30m-80m) in the bedrock. For the time being, it is believed that they occur in the form of sub-vertical tabular mineralized zones. It is my opinion that they constitute defendable exploration target on the property, at least from a geophysical point of view. It is quite unlikely that any of the anomalies will be within reach of surface prospecting and/or trenching.

Other less significant I.P. responses could be the result of minor sulphide contents in the bedrock or to the presence of other polarizable minerals such as phyllosilicates (micas, particularly biotite), or crystalline magnetite." I.P. and resistivity maps for n=3 are given in schedule 3 of this report.

**13.0) DRILLING**

Knick has not done any drilling since it acquired the property. However, several mining companies have drilled holes on the property over the years. The following table shows a summary of diamond drilling, on and in the immediate vicinity of the property:

**TABLE 3: HISTORICAL DRILLING SUMMARY**

<b>Year</b>	<b>Company</b>	<b>Number of Hole Drilled</b>	<b>Metres Drilled</b>
1952	Hollinger Mines	2 DDH	608.23
1958		2 DDH	47.44
1965	Gossan Resources	2 DDH	?
1965	Tex-Sol Exploration	3 DDH	333.84
1981	Gossan Resources	5 DDH	609.78
1984	Noranda Exploration	9 RC	245.88
2004	Porcupine Joint Venture	1 DDH	200.00
	Total	24 holes	2,045.17

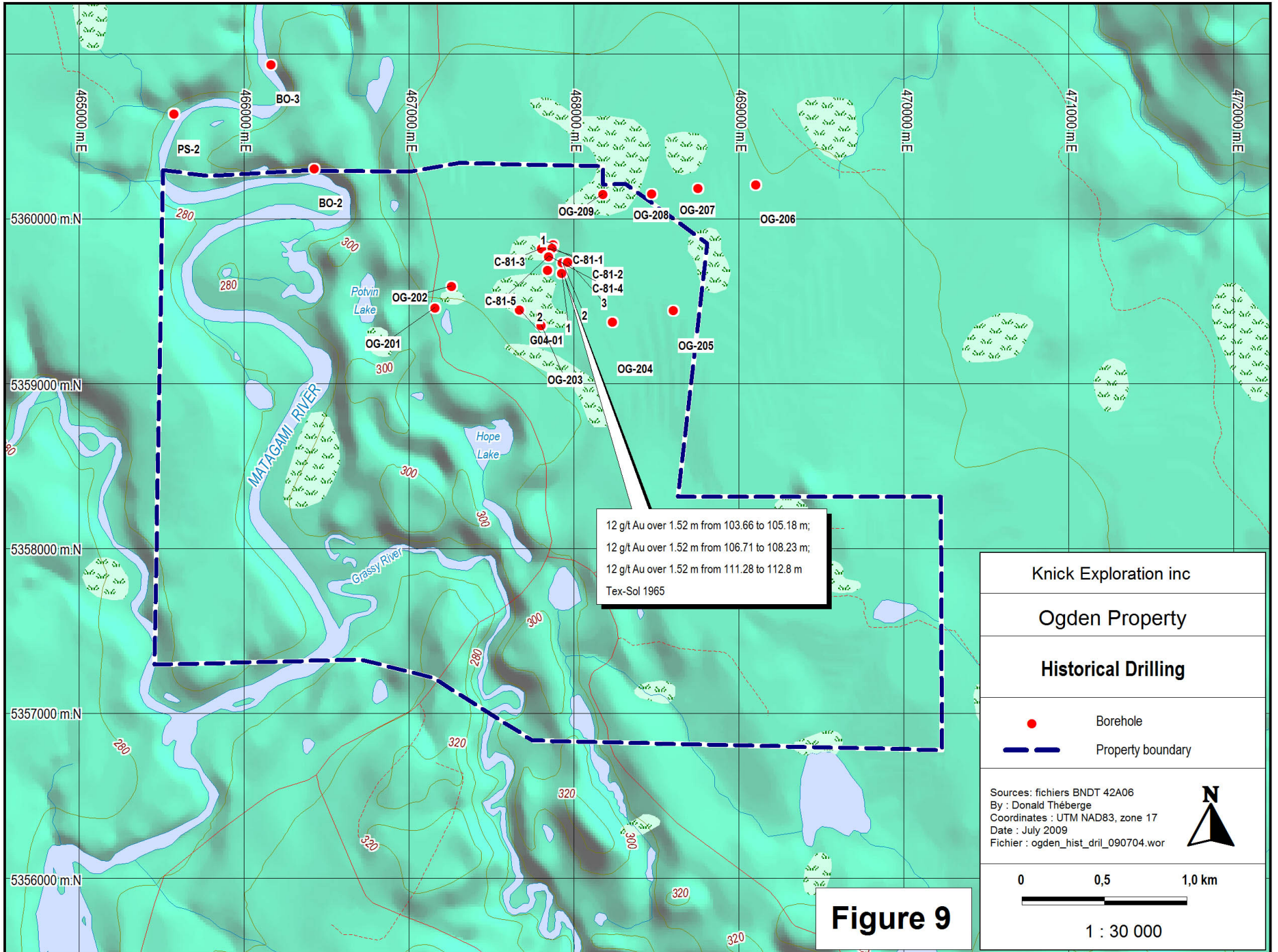
All the holes drilled on the property are tabulated in Schedule 1, "Historical Drilling" to this report, with a description of the mineralization intersected, and their positions are shown in Figure 9, "Historical Drilling".

**14.0) SAMPLING METHOD AND APPROACH**

Knick has not done any sampling since it acquired the property. None of the reports consulted while preparing Item 8, "History", describe the sampling method and approach used, either for the grab and channel sampling or for drill core sampling. As no information is available, the author cannot comment on the sampling method and approach.

**15.0) SAMPLE PREPARATION, ANALYSIS AND SECURITY**

Knick has not done any assaying since it acquired the property. None of the reports consulted while preparing Item 8, "History", described or mentioned sample preparation, analysis or security. As no information is available, the author cannot comment on the sampling method and approach.



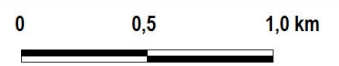
Knick Exploration inc

Ogden Property

Historical Drilling

- Borehole
- - - Property boundary

Sources: fichiers BNDT 42A06  
 By : Donald Th  berge  
 Coordinates : UTM NAD83, zone 17  
 Date : July 2009  
 Fichier : ogden\_hist\_dril\_090704.wor



1 : 30 000

**Figure 9**

## **16.0) DATA VERIFICATION**

For the reasons given in Items 13.0, 14.0, and 15.0, the author was unable to verify the data. As only reports and drill logs are available, the drill core being destroyed or impossible to locate, the data cannot be verified. For exploration work completed before Knick acquired the property, this situation is completely beyond its control, and simply reflects what was the norm before NI 43-101 came into effect in 2001. For the magnetic and VLF survey completed by Knick, the author has reviewed the data and maps and confirms that it was done according to industry standards and is sound and reliable.

## **17.0) ADJACENT PROPERTIES**

No significant exploration results that would have a material impact on the Ogden property were obtained on adjacent properties. However, Lake Shore Gold (LSG) reported a mineral reserve of 3.4 million tonnes at 7.6 g/t Au<sup>19</sup> on their Timmins West property, located approximately 7 km west of the Ogden property. The Timmins West property is underlain by the Tisdale and Porcupine Groups of rocks, and the deposit is located approximately 150 m north of the Bristol fault, which also occurs on the Ogden property.

*Please note that the qualified person has been unable to verify this information, and that the information is not necessarily indicative of the mineralization on the property.*

## **18.0) MINERAL PROCESSING AND METALLURGICAL TESTING**

No mineral processing or metallurgical testing has been done by Knick, and none has been reported in the past.

## **19.0) MINERAL RESOURCE AND MINERAL RESERVE ESTIMATES**

No mineral resources or mineral reserve estimates have been completed by Knick or reported in the assessment work covering the Ogden property.

---

<sup>19</sup> From: Darling, G., Kociumbas, M., Sullivan, J.R., Lavigne, J.J., Hayden, A.S., Small, A.S., Butler, D., Kordgharachorloo, F., Hall, R.A., Schmidt, P.R., 2007: NI 43-101 Technical Report, Timmins West Project, Timmins Ontario, Lakeshore Gold Corp. Filed on SEDAR.

## **20.0) OTHER RELEVANT DATA AND INFORMATION**

To the best knowledge of the author, all the relevant data and information have been provided in the preceding items.

## **21.0) INTERPRETATION AND CONCLUSIONS**

The Ogden property is underlain by the volcanic rocks of the Deloro Group and the metasedimentary rocks of the Porcupine Group. The property is situated less than one kilometre south of the Porcupine-Destor Fault, which marks the boundary between the Deloro and Tisdale groups. Although the bulk of the gold produced from the Timmins mining camp, approximately 68 million ounces, was mined from the Tisdale Group, several gold occurrences and mines can be found in the Deloro Group. In the 1930s and 1940s, the Naybob and Faymar mines, both located in the Deloro Group, produced 178,650 tonnes and 108,800 tonnes respectively at grades of 6.2 and 6.3 g/t Au. This is an indication of the potential of the Deloro Group.

Over the years, 24 reverse circulation and diamond drill holes totalling 2,045 m were drilled on the property and in its immediate vicinity. One hole drilled by Tex-Sol in 1965 returned values of 12 g/t Au over three non-contiguous sections of 1.52 m in silicified fragmental rock in what can be interpreted as an altered ultramafic. Several other drill holes by Tex-Sol and other exploration companies failed to reproduce these gold intersections. There is not enough data to establish the true length of the mineralized gold samples. Given the information currently available, it is impossible to determine whether the failure to reproduce the Tex-Sol results is due to a laboratory error, a nugget effect or the erratic nature of the mineralization.

Since its acquisition by Knick, line cutting, with corresponding magnetic and VLF surveys and 25.4 km of induced polarization (I.P) have been completed in the central part of the property. Two strong magnetic anomalies were located along with major faulting. One of them, the most westerly, is probably the Mattagami River Fault, which marks the limit between the sediments and volcanics. Several moderate to strong VLF anomalies oriented almost perpendicular to the main structures probably represent subsidiary faulting.

The I.P survey revealed 4 clusters of anomalies. Once cultural effects (power line, roads etc) removed, real anomalies remain, located at depth varying from 30 to 80 m. At these depths they can not be explained by trenching or prospecting, but only by diamond drilling.

The geology shows a favourable environment for gold deposits, as it is located close to the Porcupine-Destor Fault and covers both tholeiitic and calc-alkalic metavolcanic rocks in contact with sedimentary rocks along the Mattagami River Fault. Several cherty iron formations have also been mapped on the property in the past and can potentially have trapped gold mineralization.

The author strongly believes that a systematic exploration program is required to demonstrate the property's gold potential. This exploration program is described in detail in Item 22, "Recommendations".

## **22.0) RECOMMENDATIONS**

A two-phase exploration program is recommended to explore the property. The first phase will include line cutting followed by IP and magnetic surveys to cover the un-surveyed parts of the property. A geological survey over the main anomalous zones and a satellite photo interpretation will help define the best drill targets. Finally, diamond drilling is recommended to test the selected anomalies.

If warranted, a second phase consisting exclusively of diamond drilling is recommended to test the remaining anomalous zones and any other zones with a favourable geological setting. A detailed budget for both phases is given on next page:

Ogden Proposed Budget					
Phase I: Geology, geophysics and drilling	Quantity	Unit	Unit cost	Total	
Program preparation	5	days	\$650	\$3,000	
Acquisition of a high definition satellite photo				\$5,000	
Line cutting	114	km	\$450	\$51,300	
Magnetic, total field and gradient survey, with VLF	114	km	\$150	\$17,100	
Induced polarization survey, x= 50 m, n=1 to 6	121	km	\$1,500	\$181,500	
Geophysical report, Mag, VLF and IP				\$10,000	
Geological survey, 15 days at \$1,200/day all inclusive	15	days	\$1,200	\$18,000	
Diamond drilling to test any anomalous zones discovered (\$150/m, all inclusive)	3500	m	\$150	\$525,000	
Report at the end of phase 1 and filing for statutory purposes				\$15,000	
Contingency (average of 15%)				\$123,885	
				<b>Total Phase I</b>	<b>\$949,785</b>
<b>Phase II Drilling</b>					
Program preparation	5	days	\$650	\$3,250	
Diamond drilling (\$150/m, all inclusive)	6500	m	\$150	\$975,000	
Report at the end of phase 2, and filing for statutory purposes				\$20,000	
Contingency (average of 15%)				\$149,738	
				<b>Total Phase II</b>	<b>\$1,147,988</b>
				<b>Total Phases I and II</b>	<b>\$2,097,773</b>

## **23.0) REFERENCES**

### **23.1) OGS REPORTS AND ASSESSMENT WORK**

**Low, J.E., Keevil, N.B., 1946:** Report on a geomagnetic survey of the property of Goldmont Porcupine Mining Syndicate Ltd., Ogden and Price twp, province of Ontario. OGS ref # 42A06NW0241.

**Jones, W.A., 1958:** Diamond drilling, Ogden Twp., Hollinger Mines Ltd. OGS ref # 42A06NW0247.

**Szutu, S.S., 1964:** Ground Magnetic and EM surveys, Ogden Twp property. Tex-Sol Exploration Ltd. OGS ref # 42A06NW0240.

**Williams, R.M., 1965:** Three diamond drill holes totalling 1,095 feet, Tex-Sol Exploration Ltd. OGS ref # 42A06NW0248.

**Carlson, H.D., 1967:** Ogden Township, district of Cochrane. Preliminary Geological Map, Ontario Geological Survey No. P 341.

**Carlson, H.D., 1967:** The geology of Ogden, Deloro and Shaw townships, district of Cochrane, Ontario. Open file report No. 5012.

**Carlson, H.D., 1978:** V.L.F. (EM 16) survey, Carlson claims – Ogden Twp, Porcupine Mining Division, Ontario. OGS ref # 42A06NW0230.

**Sutherland, D.B., 1978:** Induced polarization and resistivity survey, Carlson claims, Ogden Twp, Timmins area, Ontario. Mattagami Lake Mines Ltd., Exploration Division. OGS ref # 42A06NW0228.

**Bradshaw, R.J., 1980:** Report on the property of Gossan Resources Ltd., Ogden Twp, Ontario. OGS ref # 42A06NW0207.

**Bradshaw, R.J., 1980:** Results of diamond drilling by Gossan Resources Ltd., on Ogden Twp, Ontario property. OGS ref # 42A06NW0224.

**Pyke, D.R., 1982:** Timmins Precambrian Geology. Map at 1:50 000 scale, Ontario Geological Survey, M 2455.

**Pyke, D.R., 1982:** Assessment report on stream sampling in Ogden Twp, claims P619350, P619351. District of Cochrane, Porcupine Mining Division, Pyke claims. OGS ref # 42A06NW0010.

**Andy Fyon, J., Crocket, J.H., 1983:** Gold exploration in the Timmins area using field and lithogeochemical characteristics of carbonate alteration zones. Ontario Geological Survey, Study 26.

**Wakeford, J.A., 1985:** Report on overburden drilling, Ogden Twp., Porcupine Mining Division, Ontario. Noranda Exploration Co. OGS ref # 42A06NW0272.

**Geoterrex Limited., 1988:** Airborne Electromagnetic and Total Intensity Survey. Timmins Ontario, Ogden Township, District of Cochrane and Timiskaming, Ontario; Ontario Geological Survey, Geophysical/Geochemical Series Map 81066, scale 1:20,000. Survey and Compilation from March 1987 to October 1987.

**Chartr , E., 1997:** Magnetometer survey, Croxall-Kangas project, Ogden and Price Twp. Inmet Mining Corporation. OGS ref # 42A06NW0064.

**Lambert, G., 1997:** Report on induced polarization surveys, Croxall-Kangas project, Ogden and Price twp, Ontario. Inmet Mining Corporation OGS ref # 42A06NW0065.

**Boily, B., 1998:** 1998 Drilling Report (Croxall-Kangas) Property (PN-76570). Inmet Mining Corporation, OGS ref # 42A06NW2008.

**Brown, D., 1998:** A report on magnetic and electromagnetic geophysical surveys on the Ogden property, Ogden Twp., Ontario, for Haddington Resources Ltd. OGS ref # 42A06NW2005.

**Brown, D., 1998:** A report on magnetic and electromagnetic geophysical surveys on the Mountjoy property, Ogden Twp., Ontario, for Noront Resources Ltd. OGS ref # 42A06NW2006.

**Vaillancourt, C., Pickett, C.L. and Daniel, E. 2001:** Precambrian Geology, Timmins West – Bristol and Ogden townships; Ontario Geological Survey, Preliminary Map P. 3436 scale 1: 20,000.

**Atkinson, B., 2002:** A virtual trip to the geology of Timmins, Ontario. Regional Resident Geologist, Timmins region, OGS, Ministry of Northern Development and Mines, Ontario.

**MacRae, B., 2004:** Diamond drill hole – Ogden Twp – Porcupine Mining Division. Porcupine Joint Venture (jv of Placer Dome and Kinross Gold Corp.) OGS ref # 42A06NW2042.

**Bateman, R., Ayer, J.A., Dubé, B., and Hamilton, M.A., 2005:** The Timmins-Porcupine Gold Camp, Northern Ontario: the Anatomy of an Archean Greenstone Belt and its Gold Mineralization: Discover Abitibi Initiative; Ontario Geological Survey, Open File Report 6158, 90 p.

**Darling, G., Kociumbas, M., Sullivan, J.R., Lavigne, J.J., Hayden, A.S., Small, A.S., Butler, D., Kordgharachorloo, F., Hall, R.A., Schmidt, P.R., 2007:** NI 43-101 Technical Report, Timmins West Project, Timmins Ontario, Lakeshore Gold Corp. Filed on SEDAR.

**Lambert, G., 2010 :** Ogden Property, Report on Phase-Domain Induced Polarization Survey, for Knick Exploration Inc.

### **23.2) GEOSCIENTIFIC PAPERS**

**Robert, F., 1996:** Filons de quartz-carbonates aurifères; dans Géologie des types de gîtes minéraux du Canada, rév. Par O.R. Eckstrand, W.D. Sinclair et R.I. Thorpe, Commission géologique du Canada, dans Géologie du Canada, no 8 ; (also The Geology of North America, vol P-1, Geological Society of America).

**Dubé, B., and Gosselin, P., 2007:** Greenstone-hosted quartz-carbonates vein deposits, in Goodfellow, W.D., ed., Mineral deposits of Canada: A synthesis of major deposit types, district metallogeny, the evolution of geological provinces and exploration methods: Geological Association of Canada, Mineral Deposits Division, Special Publication No. 5, p 49-73.

**Beakhouse, G.P. 2007.** Structurally controlled, magmatic hydrothermal model for Archean lode gold deposits: a working hypothesis; Ontario Geological Survey, Open File Report 6193, 133 p.

**Percival, J.A. 2007.** Geology and metallogeny of the Superior Province, Canada, in Goodfellow, W.D., ed., Mineral Deposits of Canada: A synthesis of major deposit types, district metallogeny, the evolution of geological provinces and exploration methods: Geological Association of Canada, Mineral Deposits Division, Special Publication No. 5, p 903-928.

**Robert, F., Brommecker, R., Bourne, B.T., Dobak, P.J., McEwan, C.J., Rowe, R.R., Zhou, X., 2007:** Models and Exploration Methods for Major Gold Deposits. In Proceedings of Exploration 07: Fifth Decennial International Conference on Mineral Exploration, edited by Milkreit, 2007 pp 691-711.

**24.0) DATE AND SIGNATURE PAGE**

This technical report is dated November 2, 2010, and is signed by the author.

***(Signed and sealed)***

---

Donald Théberge, Eng., M.B.A November 2, 2010

**25.0) ADDITIONAL REQUIREMENTS FOR TECHNICAL REPORTS ON DEVELOPMENT PROPERTIES AND PRODUCTION PROPERTIES**

This section does not apply to the Ogden property.

**26.0) ILLUSTRATIONS**



Picture of the gravel road which crosses the Ogden property

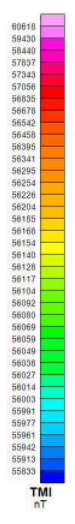
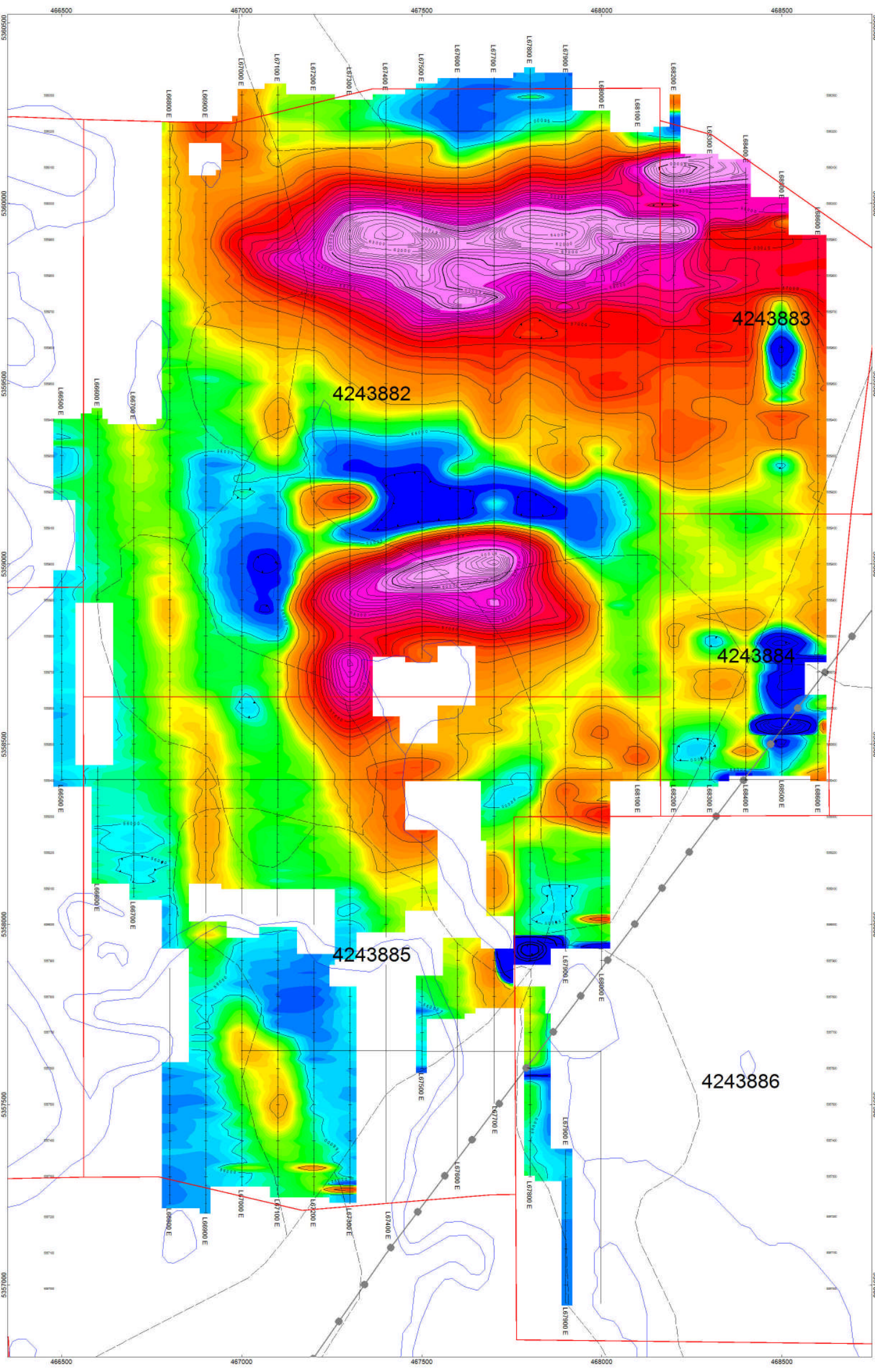
**SCHEDULE 1**  
**HISTORICAL DRILLING**

Year	Hole Type	Hole #	Company	UTM E	UTM N	Zone	Nad	Dip	Az	Overburden depth (m)	Length (m)	Remarks
1952	DDH	BO-2	Hollinger Mines	466,424	5,360,090	17	27	-55	180	64.63	303.66	Drilled close to the N boundary of the Ogden Property. Assays results not provided.
1952	DDH	BO-3	Hollinger Mines	466,160	5,360,722	17	27	-55	45	42.99	304.57	Drilled close to the N boundary of the Ogden Property. Assays results not provided.
1958	DDH	PS-1	Hollinger Mines	465,573	5,360,428	17	27	-34	339	0.00	29.76	Drilled close to the N boundary of the Ogden Property. Assays results not provided.
1958	DDH	PS-2	Hollinger Mines	465,572	5,360,424	17	27	-45	159	0.00	17.68	Drilled close to the N boundary of the Ogden Property. Assays results not provided.
1965	DDH	1	Gossan Resources Ltd.	467,871	5,359,630	17	27	?	360	?	?	Log not available, hole only indicated on a map
1965	DDH	1	Tex-Sol Exploration Ltd.	467,924	5,359,457	17	27	-45	360	32.01	123.78	12 g/t Au over 1.52 m from 103.66 to 105.18 m 12 g/t Au over 1.52 m from 106.71 to 108.23 m 12 g/t Au over 1.52 m from 111.28 to 112.8 m
1965	DDH	2	Gossan Resources Ltd.	467,837	5,359,476	17	27	?	360	?	?	Log not available, hole only indicated on a map
1965	DDH	2	Tex-Sol Exploration Ltd.	467,927	5,359,522	17	27	-45	360	20.12	117.07	Background gold values only
1965	DDH	3	Tex-Sol Exploration Ltd.	467,960	5,359,525	17	27	-90	360	9.45	92.99	Background gold values only
1981	DDH	C-81-1	Gossan Resources Ltd.	467,832	5,359,606	17	27	-60	180	13.72	137.20	Background gold values only
1981	DDH	C-81-2	Gossan Resources Ltd.	467,865	5,359,610	17	27	-65	180	12.20	137.20	Background gold values only
1981	DDH	C-81-3	Gossan Resources Ltd.	467,802	5,359,607	17	27	-65	180	14.02	137.20	Background gold values only
1981	DDH	C-81-4	Gossan Resources Ltd.	467,842	5,359,561	17	27	-55	360	54.88	99.09	Background gold values only
1981	DDH	C-81-5	Gossan Resources Ltd.	467,844	5,359,558	17	27	-55	360	24.39	99.09	Assays not reported
1984	RC	OG-201	Noranda Exploration	467,154	5,359,248	17	27	-90	360	44.51	45.43	No gold values in bedrock chips. Assays not available for heavy minerals concentrate
1984	RC	OG-202	Noranda Exploration	467,255	5,359,378	17	27	-90	360	42.99	44.51	No gold values in bedrock chips. Assays not available for heavy minerals concentrate
1984	RC	OG-203	Noranda Exploration	467,798	5,359,141	17	27	-90	360	31.71	33.23	No gold values in bedrock chips. Assays not available for heavy minerals concentrate
1984	RC	OG-204	Noranda Exploration	468,231	5,359,161	17	27	-90	360	29.57	31.71	No gold values in bedrock chips. Assays not available for heavy minerals concentrate
1984	RC	OG-205	Noranda Exploration	468,601	5,359,230	17	27	-90	360	11.89	13.41	No gold values in bedrock chips. Assays not available for heavy minerals concentrate
1984	RC	OG-206	Noranda Exploration	469,100	5,359,994	17	27	-90	360	1.52	2.74	No gold values in bedrock chips. Assays not available for heavy minerals concentrate
1984	RC	OG-207	Noranda Exploration	468,750	5,359,973	17	27	-90	360	18.75	19.97	No gold values in bedrock chips. Assays not available for heavy minerals concentrate
1984	RC	OG-208	Noranda Exploration	468,468	5,359,938	17	27	-90	360	17.99	18.90	No gold values in bedrock chips. Assays not available for heavy minerals concentrate
1984	RC	OG-209	Noranda Exploration	468,173	5,359,935	17	27	-90	360	34.76	35.98	No gold values in bedrock chips. Assays not available for heavy minerals concentrate
2004	DDH	G04-01	Porcupine Joint Venture	467,673	5,359,453	17	83	-45	360	28.00	200.00	Background gold values only
<b>Total (m)</b>											<b>2,045.17</b>	

Hole coordinates from the OGS website, DDH: means diamond drill hole, RC: means reverse circulation hole

**SCHEDULE 2**

**MAGNETIC MAP AND GEOPHYSICAL INTERPRETATION MAP**



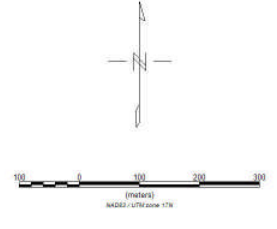
**4243884**

Claim

Power line

Roads

Surveyed by: Paul Adomaitis and George Giga  
 Instruments: GEM GSM-19 Proton MAG/VLF

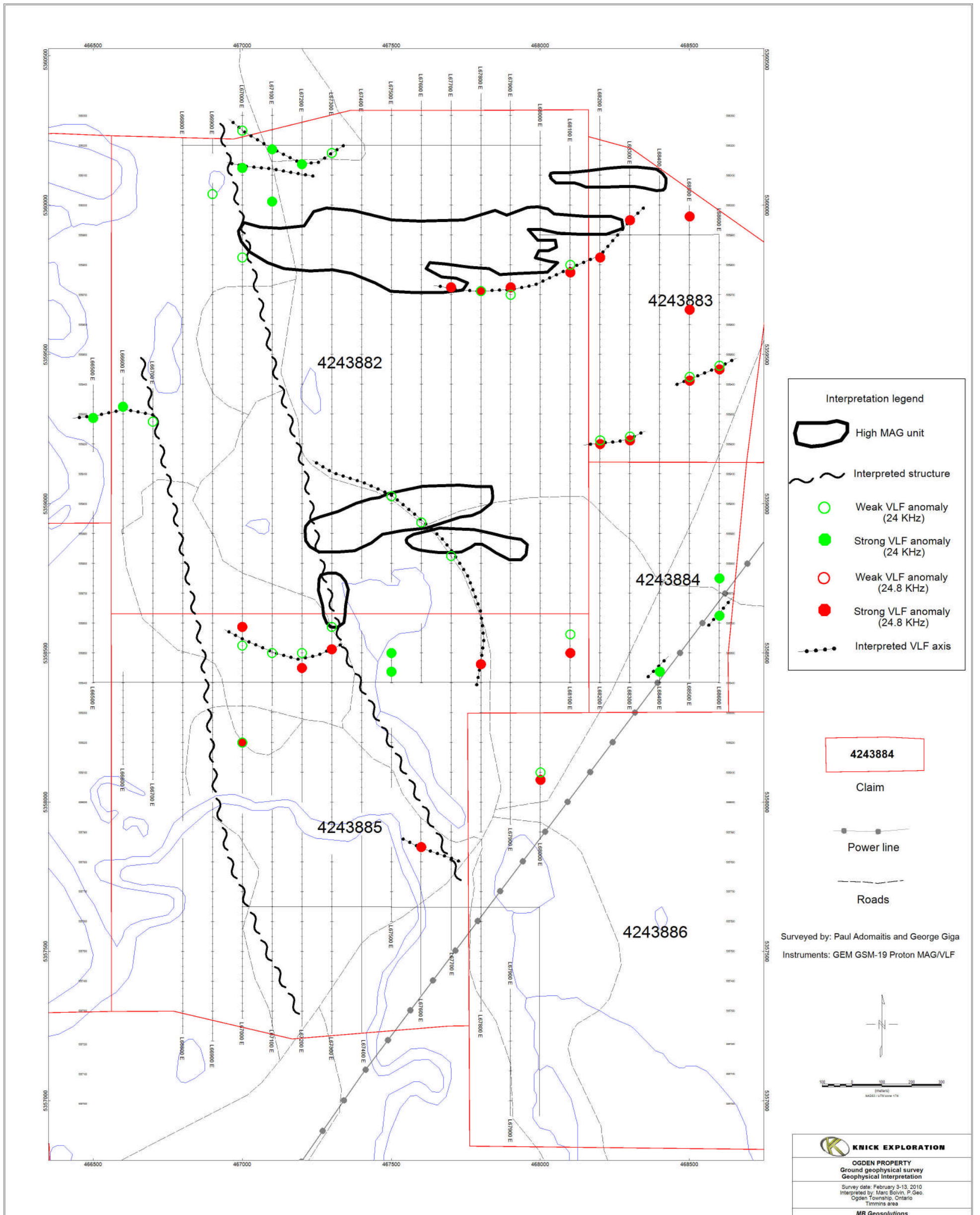


**KNICK EXPLORATION**

OGDEN PROPERTY  
 Ground geophysical survey  
 Total Magnetic Intensity (TMI) map

Survey date: February 3-13, 2010  
 Interpreted by: Marc Boivin, P. Geo.  
 Ogden Township, Ontario  
 Timmins area

MB Geosolutions

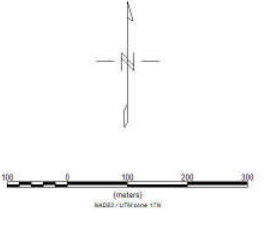


**Interpretation legend**

- High MAG unit
- Interpreted structure
- Weak VLF anomaly (24 KHz)
- Strong VLF anomaly (24 KHz)
- Weak VLF anomaly (24.8 KHz)
- Strong VLF anomaly (24.8 KHz)
- Interpreted VLF axis

- 4243884**  
Claim
- Power line
- Roads

Surveyed by: Paul Adomaitis and George Giga  
 Instruments: GEM GSM-19 Proton MAG/VLF



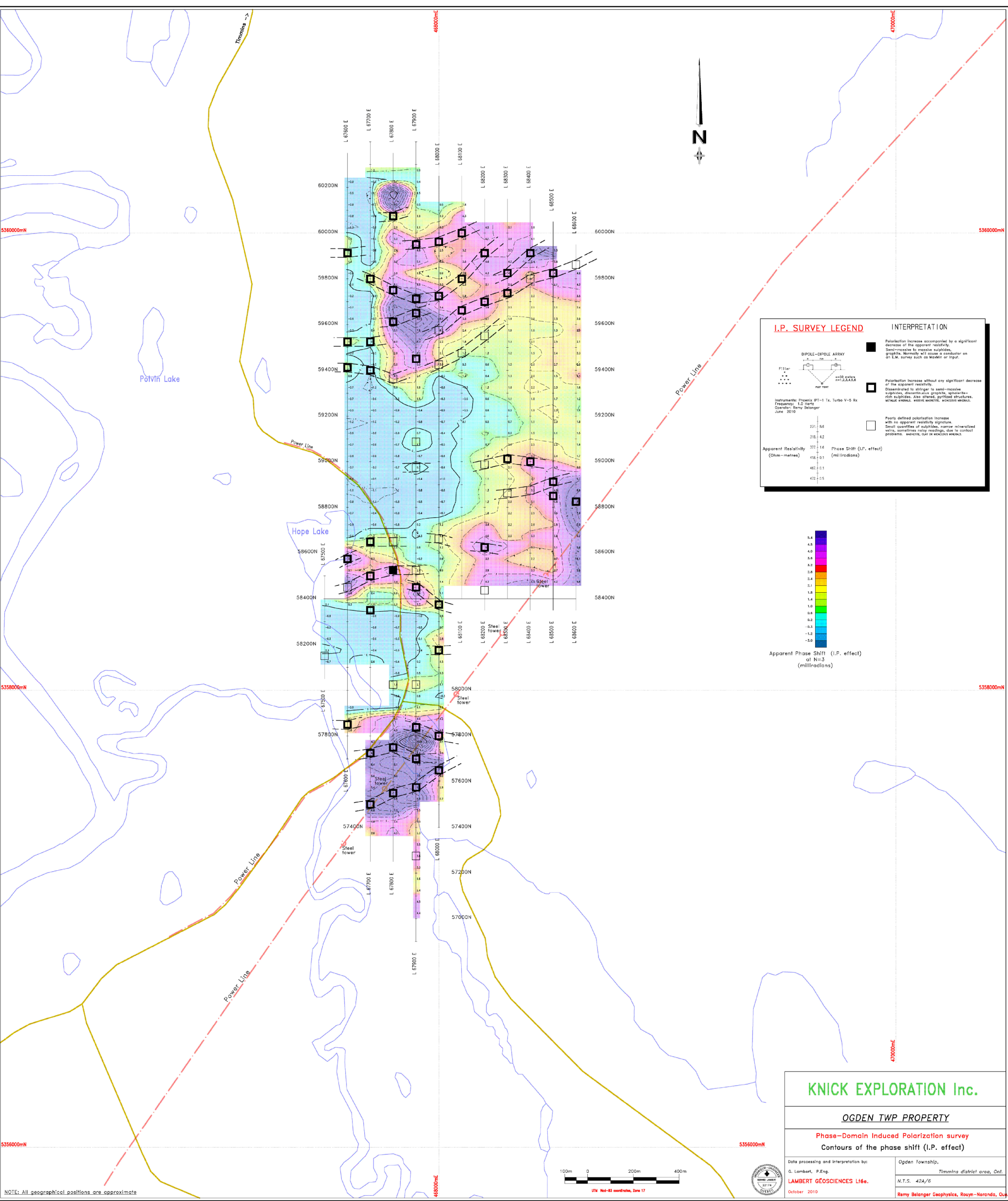
**KNICK EXPLORATION**

**OGDEN PROPERTY**  
 Ground geophysical survey  
 Geophysical Interpretation

Survey date: February 3-13, 2010  
 Interpreted by: Marc Boivin, P. Geo.  
 Ogden Township, Ontario  
 Timmins area

**MB Geosolutions**

**SCHEDULE 3**  
**I.P AND RESISTIVITY MAPS**



**I.P. SURVEY LEGEND**

**INTERPRETATION**

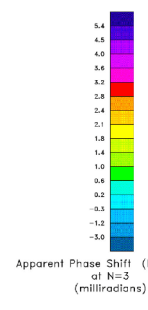
Polarization increase accompanied by a significant decrease of the apparent resistivity. Sensitive to massive sulphides, graphite. Normally will cause a conductor on an I.P. survey such as Moxton or Ingot.

Polarization increase without any significant decrease of the apparent resistivity. Disseminated to stringer to semi-massive sulphides, disseminated graphite, specular-rich sulphides. Also altered, pyritized structures, without sulphides, arsenic arsenite, silicified shales.

Poorly defined polarization increase with no apparent resistivity signature. Small quantities of sulphides, narrow mineralized veins, sometimes rusty readings, due to contact problems: arsenite, clay or weakly sulphides.

Instruments: Phoenix PF-1 Tx, Turbo V-S Rx  
 Frequency: 1.0 kHz  
 Standard: Remy Belanger  
 June 2010

Apparent Resistivity (Ohm-metres)	372 - 14	Phase Shift (I.P. effect) (milliradians)
	418 - 0.1	
	462 - 0.1	
	472 - 0.5	



**KNICK EXPLORATION Inc.**

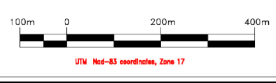
**OGDEN TWP PROPERTY**

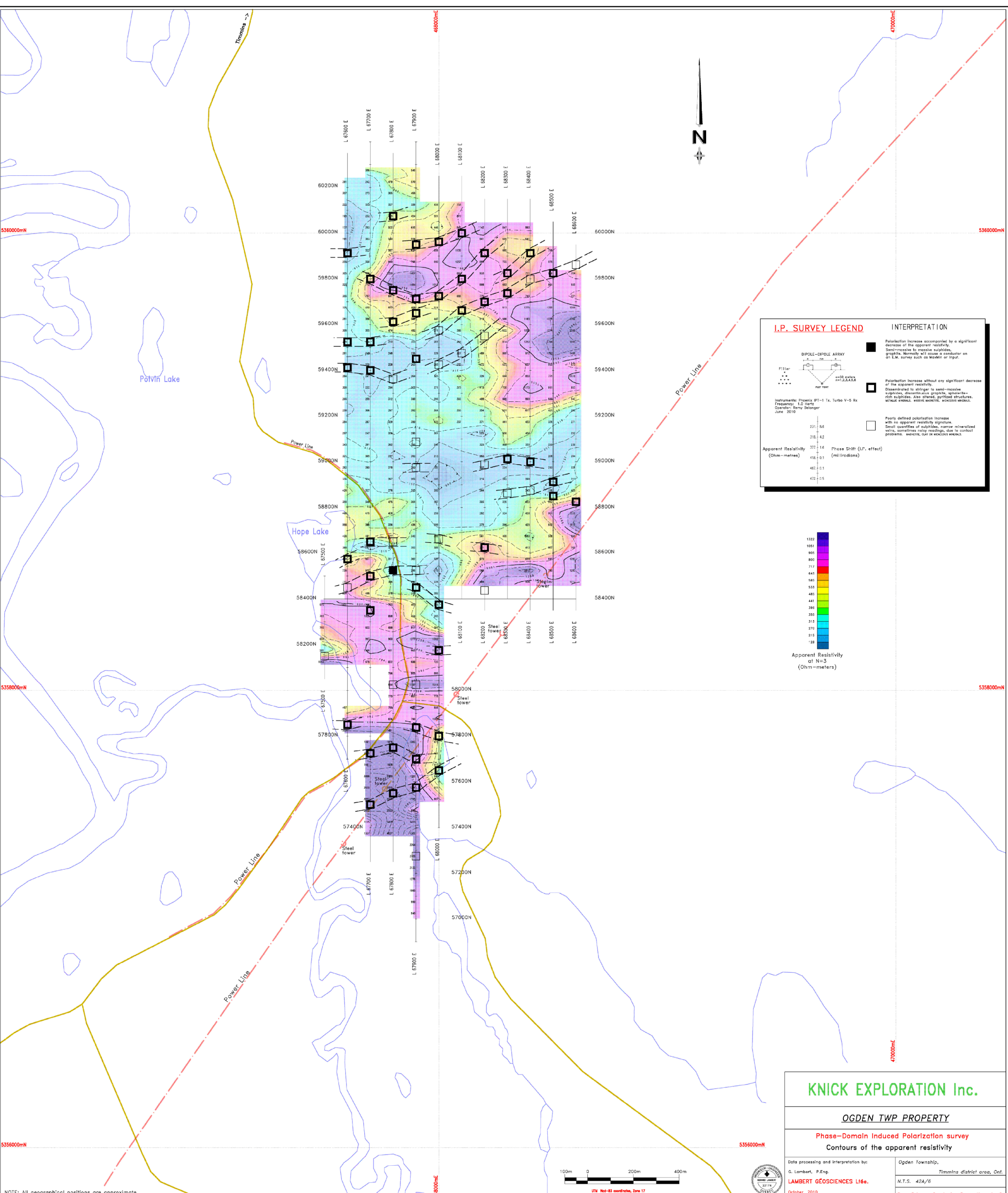
**Phase-Domain Induced Polarization survey**  
**Contours of the phase shift (I.P. effect)**

Data processing and interpretation by: G. Lambert, P.Eng.  
**LAMBERT GEOSCIENCES Ltd.**  
 October 2010

Ogden Township,  
 Timmins district area, Ont.  
 N.T.S. 42A/6  
 Remy Belanger Geophysics, Rouyn-Noranda, Que.

NOTE: All geographical positions are approximate





**I.P. SURVEY LEGEND**

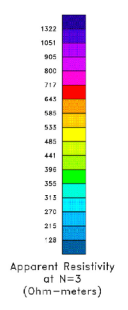
**INTERPRETATION**

Polarization increase accompanied by a significant decrease of the apparent resistivity. Sensitive to massive sulphides, graphite. Normally will cause a conductor on an I.P. survey such as Moxon or Input.

Polarization increase without any significant decrease of the apparent resistivity. Disseminated to stringer to semi-massive sulphides, disseminated graphite, specular-rich sulphides. Also altered, pyritized structures, without shales, waste material, silicified shales.

Poorly defined polarization increase with no apparent resistivity signature. Small quantities of sulphides, narrow mineralized veins, sometimes rusty readings, due to contact problems: waste, cur or wet/dry shales.

Dipole-Dipole Array  
 F11a  
 F11b  
 F11c  
 F11d  
 F11e  
 F11f  
 F11g  
 F11h  
 F11i  
 F11j  
 F11k  
 F11l  
 F11m  
 F11n  
 F11o  
 F11p  
 F11q  
 F11r  
 F11s  
 F11t  
 F11u  
 F11v  
 F11w  
 F11x  
 F11y  
 F11z  
 F11aa  
 F11ab  
 F11ac  
 F11ad  
 F11ae  
 F11af  
 F11ag  
 F11ah  
 F11ai  
 F11aj  
 F11ak  
 F11al  
 F11am  
 F11an  
 F11ao  
 F11ap  
 F11aq  
 F11ar  
 F11as  
 F11at  
 F11au  
 F11av  
 F11aw  
 F11ax  
 F11ay  
 F11az  
 F11ba  
 F11bb  
 F11bc  
 F11bd  
 F11be  
 F11bf  
 F11bg  
 F11bh  
 F11bi  
 F11bj  
 F11bk  
 F11bl  
 F11bm  
 F11bn  
 F11bo  
 F11bp  
 F11bq  
 F11br  
 F11bs  
 F11bt  
 F11bu  
 F11bv  
 F11bw  
 F11bx  
 F11by  
 F11bz  
 F11ca  
 F11cb  
 F11cc  
 F11cd  
 F11ce  
 F11cf  
 F11cg  
 F11ch  
 F11ci  
 F11cj  
 F11ck  
 F11cl  
 F11cm  
 F11cn  
 F11co  
 F11cp  
 F11cq  
 F11cr  
 F11cs  
 F11ct  
 F11cu  
 F11cv  
 F11cw  
 F11cx  
 F11cy  
 F11cz  
 F11da  
 F11db  
 F11dc  
 F11dd  
 F11de  
 F11df  
 F11dg  
 F11dh  
 F11di  
 F11dj  
 F11dk  
 F11dl  
 F11dm  
 F11dn  
 F11do  
 F11dp  
 F11dq  
 F11dr  
 F11ds  
 F11dt  
 F11du  
 F11dv  
 F11dw  
 F11dx  
 F11dy  
 F11dz  
 F11ea  
 F11eb  
 F11ec  
 F11ed  
 F11ee  
 F11ef  
 F11eg  
 F11eh  
 F11ei  
 F11ej  
 F11ek  
 F11el  
 F11em  
 F11en  
 F11eo  
 F11ep  
 F11eq  
 F11er  
 F11es  
 F11et  
 F11eu  
 F11ev  
 F11ew  
 F11ex  
 F11ey  
 F11ez  
 F11fa  
 F11fb  
 F11fc  
 F11fd  
 F11fe  
 F11ff  
 F11fg  
 F11fh  
 F11fi  
 F11fj  
 F11fk  
 F11fl  
 F11fm  
 F11fn  
 F11fo  
 F11fp  
 F11fq  
 F11fr  
 F11fs  
 F11ft  
 F11fu  
 F11fv  
 F11fw  
 F11fx  
 F11fy  
 F11fz  
 F11ga  
 F11gb  
 F11gc  
 F11gd  
 F11ge  
 F11gf  
 F11gg  
 F11gh  
 F11gi  
 F11gj  
 F11gk  
 F11gl  
 F11gm  
 F11gn  
 F11go  
 F11gp  
 F11gq  
 F11gr  
 F11gs  
 F11gt  
 F11gu  
 F11gv  
 F11gw  
 F11gx  
 F11gy  
 F11gz  
 F11ha  
 F11hb  
 F11hc  
 F11hd  
 F11he  
 F11hf  
 F11hg  
 F11hh  
 F11hi  
 F11hj  
 F11hk  
 F11hl  
 F11hm  
 F11hn  
 F11ho  
 F11hp  
 F11hq  
 F11hr  
 F11hs  
 F11ht  
 F11hu  
 F11hv  
 F11hw  
 F11hx  
 F11hy  
 F11hz  
 F11ia  
 F11ib  
 F11ic  
 F11id  
 F11ie  
 F11if  
 F11ig  
 F11ih  
 F11ii  
 F11ij  
 F11ik  
 F11il  
 F11im  
 F11in  
 F11io  
 F11ip  
 F11iq  
 F11ir  
 F11is  
 F11it  
 F11iu  
 F11iv  
 F11iw  
 F11ix  
 F11iy  
 F11iz  
 F11ja  
 F11jb  
 F11jc  
 F11jd  
 F11je  
 F11jf  
 F11jg  
 F11jh  
 F11ji  
 F11jj  
 F11jk  
 F11jl  
 F11jm  
 F11jn  
 F11jo  
 F11jp  
 F11jq  
 F11jr  
 F11js  
 F11jt  
 F11ju  
 F11jv  
 F11jw  
 F11jx  
 F11jy  
 F11jz  
 F11ka  
 F11kb  
 F11kc  
 F11kd  
 F11ke  
 F11kf  
 F11kg  
 F11kh  
 F11ki  
 F11kj  
 F11kk  
 F11kl  
 F11km  
 F11kn  
 F11ko  
 F11kp  
 F11kq  
 F11kr  
 F11ks  
 F11kt  
 F11ku  
 F11kv  
 F11kw  
 F11kx  
 F11ky  
 F11kz  
 F11la  
 F11lb  
 F11lc  
 F11ld  
 F11le  
 F11lf  
 F11lg  
 F11lh  
 F11li  
 F11lj  
 F11lk  
 F11ll  
 F11lm  
 F11ln  
 F11lo  
 F11lp  
 F11lq  
 F11lr  
 F11ls  
 F11lt  
 F11lu  
 F11lv  
 F11lw  
 F11lx  
 F11ly  
 F11lz  
 F11ma  
 F11mb  
 F11mc  
 F11md  
 F11me  
 F11mf  
 F11mg  
 F11mh  
 F11mi  
 F11mj  
 F11mk  
 F11ml  
 F11mm  
 F11mn  
 F11mo  
 F11mp  
 F11mq  
 F11mr  
 F11ms  
 F11mt  
 F11mu  
 F11mv  
 F11mw  
 F11mx  
 F11my  
 F11mz  
 F11na  
 F11nb  
 F11nc  
 F11nd  
 F11ne  
 F11nf  
 F11ng  
 F11nh  
 F11ni  
 F11nj  
 F11nk  
 F11nl  
 F11nm  
 F11nn  
 F11no  
 F11np  
 F11nq  
 F11nr  
 F11ns  
 F11nt  
 F11nu  
 F11nv  
 F11nw  
 F11nx  
 F11ny  
 F11nz  
 F11oa  
 F11ob  
 F11oc  
 F11od  
 F11oe  
 F11of  
 F11og  
 F11oh  
 F11oi  
 F11oj  
 F11ok  
 F11ol  
 F11om  
 F11on  
 F11oo  
 F11op  
 F11oq  
 F11or  
 F11os  
 F11ot  
 F11ou  
 F11ov  
 F11ow  
 F11ox  
 F11oy  
 F11oz  
 F11pa  
 F11pb  
 F11pc  
 F11pd  
 F11pe  
 F11pf  
 F11pg  
 F11ph  
 F11pi  
 F11pj  
 F11pk  
 F11pl  
 F11pm  
 F11pn  
 F11po  
 F11pp  
 F11pq  
 F11pr  
 F11ps  
 F11pt  
 F11pu  
 F11pv  
 F11pw  
 F11px  
 F11py  
 F11pz  
 F11qa  
 F11qb  
 F11qc  
 F11qd  
 F11qe  
 F11qf  
 F11qg  
 F11qh  
 F11qi  
 F11qj  
 F11qk  
 F11ql  
 F11qm  
 F11qn  
 F11qo  
 F11qp  
 F11qq  
 F11qr  
 F11qs  
 F11qt  
 F11qu  
 F11qv  
 F11qw  
 F11qx  
 F11qy  
 F11qz  
 F11ra  
 F11rb  
 F11rc  
 F11rd  
 F11re  
 F11rf  
 F11rg  
 F11rh  
 F11ri  
 F11rj  
 F11rk  
 F11rl  
 F11rm  
 F11rn  
 F11ro  
 F11rp  
 F11rq  
 F11rr  
 F11rs  
 F11rt  
 F11ru  
 F11rv  
 F11rw  
 F11rx  
 F11ry  
 F11rz  
 F11sa  
 F11sb  
 F11sc  
 F11sd  
 F11se  
 F11sf  
 F11sg  
 F11sh  
 F11si  
 F11sj  
 F11sk  
 F11sl  
 F11sm  
 F11sn  
 F11so  
 F11sp  
 F11sq  
 F11sr  
 F11ss  
 F11st  
 F11su  
 F11sv  
 F11sw  
 F11sx  
 F11sy  
 F11sz  
 F11ta  
 F11tb  
 F11tc  
 F11td  
 F11te  
 F11tf  
 F11tg  
 F11th  
 F11ti  
 F11tj  
 F11tk  
 F11tl  
 F11tm  
 F11tn  
 F11to  
 F11tp  
 F11tq  
 F11tr  
 F11ts  
 F11tt  
 F11tu  
 F11tv  
 F11tw  
 F11tx  
 F11ty  
 F11tz  
 F11ua  
 F11ub  
 F11uc  
 F11ud  
 F11ue  
 F11uf  
 F11ug  
 F11uh  
 F11ui  
 F11uj  
 F11uk  
 F11ul  
 F11um  
 F11un  
 F11uo  
 F11up  
 F11uq  
 F11ur  
 F11us  
 F11ut  
 F11uu  
 F11uv  
 F11uw  
 F11ux  
 F11uy  
 F11uz  
 F11va  
 F11vb  
 F11vc  
 F11vd  
 F11ve  
 F11vf  
 F11vg  
 F11vh  
 F11vi  
 F11vj  
 F11vk  
 F11vl  
 F11vm  
 F11vn  
 F11vo  
 F11vp  
 F11vq  
 F11vr  
 F11vs  
 F11vt  
 F11vu  
 F11vv  
 F11vw  
 F11vx  
 F11vy  
 F11vz  
 F11wa  
 F11wb  
 F11wc  
 F11wd  
 F11we  
 F11wf  
 F11wg  
 F11wh  
 F11wi  
 F11wj  
 F11wk  
 F11wl  
 F11wm  
 F11wn  
 F11wo  
 F11wp  
 F11wq  
 F11wr  
 F11ws  
 F11wt  
 F11wu  
 F11wv  
 F11ww  
 F11wx  
 F11wy  
 F11wz  
 F11xa  
 F11xb  
 F11xc  
 F11xd  
 F11xe  
 F11xf  
 F11xg  
 F11xh  
 F11xi  
 F11xj  
 F11xk  
 F11xl  
 F11xm  
 F11xn  
 F11xo  
 F11xp  
 F11xq  
 F11xr  
 F11xs  
 F11xt  
 F11xu  
 F11xv  
 F11xw  
 F11xx  
 F11xy  
 F11xz  
 F11ya  
 F11yb  
 F11yc  
 F11yd  
 F11ye  
 F11yf  
 F11yg  
 F11yh  
 F11yi  
 F11yj  
 F11yk  
 F11yl  
 F11ym  
 F11yn  
 F11yo  
 F11yp  
 F11yq  
 F11yr  
 F11ys  
 F11yt  
 F11yu  
 F11yv  
 F11yw  
 F11yx  
 F11yy  
 F11yz  
 F11za  
 F11zb  
 F11zc  
 F11zd  
 F11ze  
 F11zf  
 F11zg  
 F11zh  
 F11zi  
 F11zj  
 F11zk  
 F11zl  
 F11zm  
 F11zn  
 F11zo  
 F11zp  
 F11zq  
 F11zr  
 F11zs  
 F11zt  
 F11zu  
 F11zv  
 F11zw  
 F11zx  
 F11zy  
 F11zz



Apparent Resistivity of N=3 (Ohm-meters)

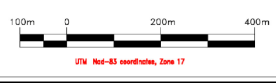
**KNICK EXPLORATION Inc.**

**OGDEN TWP PROPERTY**

**Phase-Domain Induced Polarization survey**  
Contours of the apparent resistivity

Date processing and interpretation by: G. Lambert, P.Eng.  
**LAMBERT GEOSCIENCES Ltd.**  
October 2010

Ogden Township, Timmins district area, Ont.  
N.T.S. 42A/6  
Remy Belanger Geophysics, Rouyn-Noranda, Que.



NOTE: All geographical positions are approximate