

## Form 51-102F3

### *Material Change Report*

**Item 1: Name and Address of Company**

DESERT GOLD VENTURES INC.  
1250 West Hastings Street  
Vancouver, B.C., V6E 2M4

(the "Company" or "Desert Gold")

**Item 2: Date of Material Change**

February 6, 2012

**Item 3: News Release**

The news release was disseminated February 6, 2012, by way of Marketwire and a copy was filed on SEDAR.

**Item 4: Summary of Material Change**

The Company announced the successful renewal of the Rwandan gold permits for another four years and advised that the anticipated mineralization over the target area Byumba continues to meet expectations. Desert Gold already has an NI 43-101 compliant inferred mineral resource of 5,551,000 tons at a grade of 1.48 Au g/t for 265,000 oz of gold declared on the mineralised zone and is targeting the extension of that resource. The Company provided further information regarding the recent drilling at the Rubaya Deposit. The Rubaya Project is 20km north of the capital city of Kigali and is part of the Central African Kibaran Orogen that hosts gold resources of more than 10.5 million ounces of gold in the nearby South Kivu Province of the DRC. The project is easily accessible by road from Kigali.

**Item 5: Full Description of Material Change**

Recent drilling confirms further gold mineralization over 200m along the extension of the Rubaya Deposit with gold values of up to 5.78g/t. Moreover, 18 sampled intervals contain gold grades of over 1g/t. The mineralization occurs as higher grade zones with widths ranging from 0.48 to 6.00 m in broad mineralized zones 3 to 60m wide. The orientation of this structure is NNW to SSE with the mineralization occurring from surface. The mineralization is open down dip and along strike.

These results are very encouraging, and are consistent with results declared so far. Drilling shows the Rubaya resource to continue for 200m and more to the NNW and will increase the current resource significantly. Intersection thicknesses and grades are similar to mineralization in the SSE where an inferred resource of 265 000 oz has been estimated.

Desert Gold is currently drilling the structure hosting the Rubaya resource to the NNW by means of diamond drilling. Two-man portable rigs are being used and drilling tests the mineralization

on 100m spaced lines to the NNW. Soil sample anomalies and artisanal workings suggest that mineralization extends over 1.8 km.

*Readers are advised that the full text of the news release is attached to this Material Change Report as Appendix "A".*

**Item 6: Reliance on subsection 7.1(2) or (3) of National Instrument 51-102**

This item does not apply.

**Item 7: Omitted Information**

This item does not apply.

**Item 8: Executive Officer**

Jared Scharf, CFO

Business Telephone: (604) 566-9240

Facsimile: (604) 408-9301

**Item 9: Date of Report**

February 16, 2012

## SCHEDULE "A"



# DESERT GOLD VENTURES INC.

1250 West Hastings Street  
Vancouver, BC  
Canada V6E 2M4  
Tel: (604) 566-9240  
Fax: (604) 408-9301  
www.desertgold.ca

FOR IMMEDIATE RELEASE

## Desert Gold Announces Encouraging Results at its Rubaya Project Located in Rwanda

**Borehole RB11\_34: 60 m at 0.45 g/t Au;**

**Borehole RB11\_36: 0.9m at 4.54g/t, 2.7m at 1.7g/t**

TORONTO, February 6, 2012 - Desert Gold Ventures Inc. (TSX-V: DAU) (the "Company" or "Desert Gold") is pleased to announce the successful renewal of the Rwandan gold permits for another four years and also that the anticipated mineralization over the target area Byumba continues to meet expectations. Desert Gold already has an NI 43-101 compliant inferred mineral resource of 5,551,000 tons at a grade of 1.48 Au g/t for 265,000 oz of gold declared on the mineralised zone and is targeting the extension of that resource. Recent drilling confirms further gold mineralization over 200m along the extension of the Rubaya Deposit with gold values of up to 5.78g/t. Moreover, 18 sampled intervals contain gold grades of over 1g/t. The mineralization occurs as higher grade zones with widths ranging from 0.48 to 6.00 m in broad mineralized zones 3 to 60m wide. The orientation of this structure is NNW to SSE with the mineralization occurring from surface. The mineralization is open down dip and along strike.

**Table 1. Selected intersections from boreholes RB11-034 and RB11-036 - Rubaya**

Hole No	From (m)	To (m)	Width (m)	Au (g/t)
RB11-034	110.83	111.83	1.00	4.19
RB11-034	129.30	130.35	1.05	1.56
RB11-034	164.58	165.68	1.10	1.86
RB11-036	103.76	109.50	5.74	0.79
RB11-036	190.83	191.70	0.87	4.54
RB11-036	213.13	215.79	2.66	1.73

True width has not yet been determined. The tests were conducted by ALS Chemex Johannesburg using the fire assay method with ICP-AES finish.

These results are very encouraging, and are consistent with results declared so far. Drilling shows the Rubaya resource to continue for 200m and more to the NNW and will increase the current resource significantly. Intersection thicknesses and grades are similar to mineralization in the SSE where an inferred resource of 265 000 oz has been estimated.

Figure 1 Satellite image showing the project area

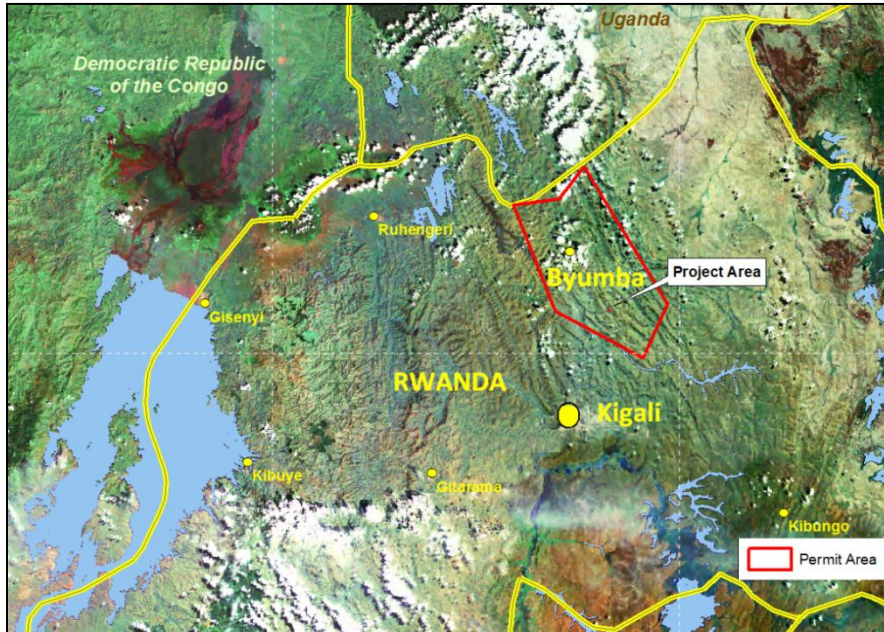
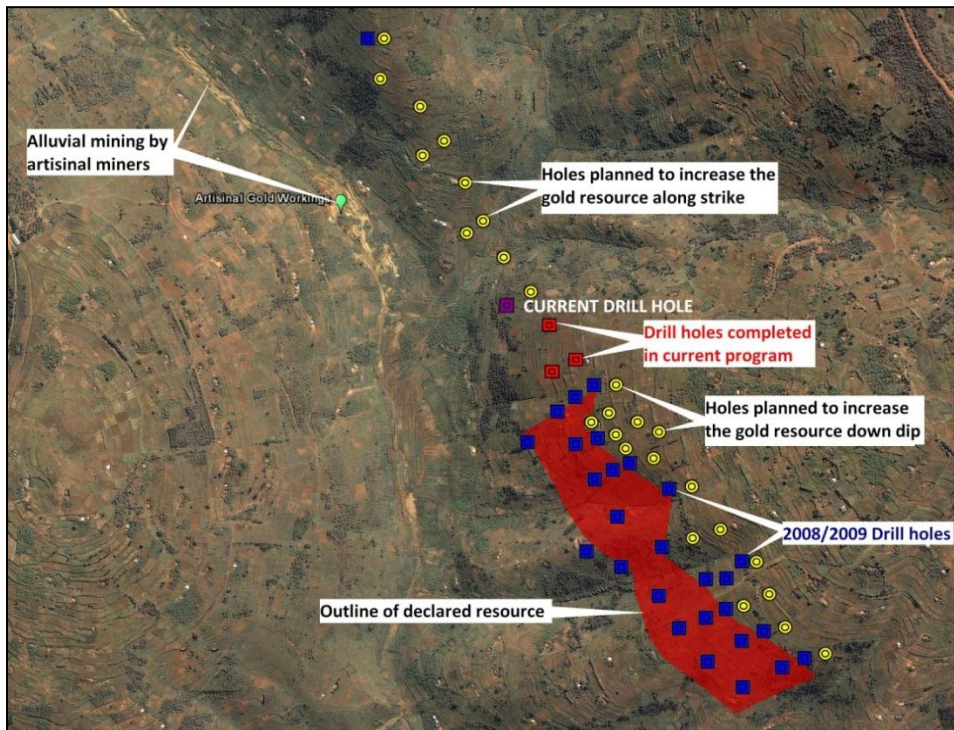


Figure 2 Satellite image of the project area with the declared resource indicated in red, boreholes planned in yellow and the holes completed during the current program in red.



## **Current work at Rubaya**

Desert Gold is currently drilling the structure hosting the Rubaya resource to the NNW by means of diamond drilling. Two-man portable rigs are being used and drilling tests the mineralization on 100m spaced lines to the NNW. Soil sample anomalies and artisanal workings suggest that mineralization extends over 1.8 km.

## **About Rubaya**

The Rubaya Project is 20km north of the capital city of Kigali and is part of the Central African Kibaran Orogen that hosts gold resources of more than 10.5 million ounces of gold in the nearby South Kivu Province of the DRC. The project is easily accessible by road from Kigali.

Thomas R. Tough, P.Eng., a member of Desert Gold's board of directors, is the non-independent, Qualified Person, responsible for the technical information reported herein.

## **About Desert Gold**

Desert Gold Ventures Inc. is an advanced exploration and development company which holds mining assets in Mali, Rwanda, Senegal and a 50% participating interest in a joint venture agreement with Kinross Goldbanks Mining Company (a subsidiary of Kinross Gold Corporation) of Toronto, Ontario in respect of the Goldbanks Mining property located in Pershing County, Nevada, USA.

To learn more, visit our website at: [www.desertgold.ca](http://www.desertgold.ca)

This press release includes certain "forward-looking statements". All statements regarding the ability of the Company to successfully integrate the businesses of Desert Gold and TransAfrika and to delineate new resources in proposed drilling programs are forward-looking statements that involve various risks and uncertainties. There can be no assurance that such statements will prove to be accurate and actual results and future events could differ materially from those anticipated in such statements. All statements that are not historical facts, including without limitation statements regarding future estimates, plans, objectives, assumptions or expectations of future performance, are "forward-looking statements". We caution you that such "forward looking statements" involve known and unknown risks and uncertainties that could cause actual results and future events to differ materially from those anticipated in such statements. Such risks and uncertainties include risk factors as discussed in the Company's filings with Canadian securities regulatory agencies. The Company expressly disclaims any obligation to update any forward-looking statements except as may be required by law.

\* \* \* \* \*

For further information concerning Desert Gold and the TransAfrika material properties, please refer to Desert Gold's SEDAR profile at [www.sedar.com](http://www.sedar.com), or contact:

Roeland van Kerckhoven, President and CEO  
Tel: 1 (604) 566-9240  
Fax: 1 (604) 408-9301  
Email: [roelandvk@desertgold.ca](mailto:roelandvk@desertgold.ca)

or Jared Scharf, CFO  
Tel: 1 (604) 566-9240  
Fax: 1 (604) 408-9301  
Email: [jared.scharf@desertgold.ca](mailto:jared.scharf@desertgold.ca)

*NEITHER THE TSX VENTURE EXCHANGE NOR ITS REGULATION SERVICES PROVIDER (AS THAT TERM IS DEFINED IN THE POLICIES OF THE TSX VENTURE EXCHANGE) ACCEPTS RESPONSIBILITY FOR THE ADEQUACY OR ACCURACY OF THIS RELEASE.*