

**SUMMARY REPORT
ON THE
COPPERTONIC MINERAL PROPERTY
BRITISH COLUMBIA, CANADA**

**Latitude 51°49'16"
Longitude 120°46' 10"
NTS 653729E, 5743495N
(NAD 83, Zone 10)
(Centre of Property)**

**for
La Quinta Resource Corporation**

**By
J.W. (Bill) Morton P. Geo**

August 30, 2013.

Table of Contents

| | page |
|---|-------------|
| Summary | 1 |
| Introduction | 1 |
| Reliance on Experts | 2 |
| Property Description and Location | 2 |
| Accessibility Climate and Physiography | 2 |
| History | 4 |
| Geological Setting and Mineralization | 6 |
| Regional Geology | 6 |
| Property Geology | 6 |
| Deposit Types | 10 |
| Exploration | 11 |
| Drilling | 13 |
| Sample Preparation, Analysis and Security | 13 |
| Data Verification | 13 |
| Mineral Processing and Metallurgical Testing | 13 |
| Mineral Resource Estimates | 13 |
| Mining Methods | 13 |
| Recovery Methods | 13 |
| Project Infrastructure | 14 |
| Market Studies and Contracts | 14 |
| Environmental Studies, Permitting and Social or Community Impact | 14 |
| Capital and Operating Costs | 14 |
| Economic Analysis | 14 |
| Adjacent Properties | 14 |
| Other Relevant Data and Information | 14 |
| Interpretation and Conclusions | 14 |
| Recommendations | 15 |
| References | 15 |

Figures

| | |
|---|----|
| Location Map, Fig. 1 | 3 |
| Claim Map, Fig. 2 | 5 |
| Regional Geology, Fig. 3 | 8 |
| Ice Direction, Fig. 4 | 9 |
| Compilation, Ground Geophysics with Drill Holes, Fig. 5 | 12 |

Tables

| | |
|----------------------------|---|
| Table 1; Claim Information | 3 |
|----------------------------|---|

Summary

The Coppertonic claim, consisting of 24 claim units covering 480 hectares (1,185 acres), was acquired directly by La Quinta Corporation on July 26, 2013 by staking. It is 100% owned by La Quinta.

Coppertonic is located in south central British Columbia immediately south of Canim Lake, approximately 350 kilometres northeast of the City of Vancouver. It covers the eastern portion of a copper-gold occurrence historically called the Sleeping Giant prospect. Previous explorers of the Sleeping Giant prospect have included Dome Mines Limited, Pioneer Metals Corporation, Cominco Limited and Fjordland Exploration Inc.

Coppertonic covers a monzonite porphyry stock intruding alkalic and calcalkalic volcanic rocks of Triassic-Jurassic age which are included in the Quesnel Terrane. Although predominantly covered by glacial till a prominent magnetic anomaly centered on the property is interpreted to reflect a larger area of covered monzonite porphyry than what outcrops. Historic drilling on the prospect, largely immediately to the west of the current claim, has included an aggregate of nineteen percussion drill holes and three diamond drill holes completed by Dome Mines, Cominco and Pioneer.

Relevant deposit models for the style of mineralization and geological setting which occurs at Coppertonic include New Afton, BC (New Gold Inc.), Woodjam, BC (Goldfields / Consolidated Woodjam Copper Corp.) and North Rok, BC (Colorado Resources Ltd.).

Introduction

This report, in the format required by National Instrument 43-101, has been written at the request of La Quinta Resource Corporation. The author of the report, J. William (Bill) Morton P.Geo., meets the definition of a “Qualified Person” but does not meet the definition of an “Independent Qualified Person”, owing to his ownership of shares in La Quinta Resource Corporation. The report is being prepared to provide a coherent and current summary of the project to be available to distribute as may be required from time to time and will be posted on Sedar for public purview. Sources of information used in the report include various provincial and federal geologic reports plus several assessment reports filed with the British Columbia Government. The author has made several trips to the project lands, the most recent one being in September 2004 and has been in the general vicinity of the project (within 10 kilometres) as recently as July 2013.

Reliance on Experts

Not Applicable

Property Description and Location

Table 1; Claim Information

| Claim Name | Record # | Area (hectares) | Expiry Date |
|-------------------|-----------------|------------------------|--------------------|
| Coppertonic | 1021228 | 480 | 26-Jul-14 |
| | | Total 480 Ha | |

The Coppertonic Mineral Claim is located in the Clinton Mining Division of British Columbia. It is recorded in the name of Dustin Henderson, president of La Quinta Resource Corporation, and is for the sole benefit of La Quinta Resource Corporation.

La Quinta Resource Corporation has a 100% interest in the claim with no royalties, back-in rights or other burdens. There are no known environment issues specific to the claim. The claim falls within an area of asserted traditional First Nations land claims which are currently unresolved but which, based on experience at nearby exploration projects and permits granted to previous explorers on the area of the current claim, are not expected to inordinately affect future exploration and development of the claim.

Accessibility Climate and Physiography

The Coppertonic claim is located immediately south of Canim Lake approximately 40 kilometres northeast of the city of 100 Mile House in south-central British Columbia. Access to the project is provided by paved road from 100 Mile House to Canim Lake and then approximately 15 kilometres of gravel road including the Howards Lake road from the Canim Lake – Mahood Lake road. The topography of the Coppertonic claim is undulating with elevations varying from 920 metres (3,200 feet) to 1,150 metres (3,780 feet). Vegetation is predominantly coniferous forest dominated by Douglas Fir, Lodgepole pine, spruce and birch.

The climate for this area is typical of south-central British Columbia with warm to hot summers and cool to cold winters. Permanent snow typically covers the ground from the middle of November until mid April. Logging activities persist year round excepting spring breakup when ground frost melts and road restrictions are invoked to protect the integrity of the road surface.

All of the mineral claims are situated on provincial government land. Sources of water are plentiful and numerous options for surface facilities including tailings would be predictably available owing to the undulating character of the landscape. Hydro electric power is expected to be available from the existing system paralleling the Canim Lake – Hendrix Lake road, approximately 15 kilometres from the property, formerly servicing the Boss Mountain Molybdenum Mine (Noranda Mining Corp.).



| | | | |
|--|-------------|-----|-----------------|
| | | | |
| La Quinta Resource Corp. | | | |
| COPPERTONIC PROJECT CLINTON M.D., B.C. | | | |
| Location Map | | | |
| Date | AUGUST 2013 | UTM | NAD 83, Zone 10 |
| Scale | as shown | NTS | 092P087 |
| | | | Fig 1 |

History

The earliest mention of exploration in the Canim Lake area is found in the BC Minister of Mines Annual Report for 1903 where a vague reference is made concerning the occurrence of lead-silver bearing quartz veins (probably considerably to the east of the current claims in older black phyllites).

The first documented exploration activity in the vicinity of the Coppertonic claim was in 1968 by Cominco Ltd who documented the discovery of low grade copper mineralization related to the Canim stock and subsequently completed a program of soil and silt sampling and geological mapping.

From 1972 to 1974 Dome Mines Limited completed mapping, soil, silt and rock sampling, trenching, and ground magnetometer and IP geophysical surveys. Two areas hosting IP chargeability anomalies (10 to +25 mv/V) were delineated and nine percussion drill holes (1,220 m) completed.

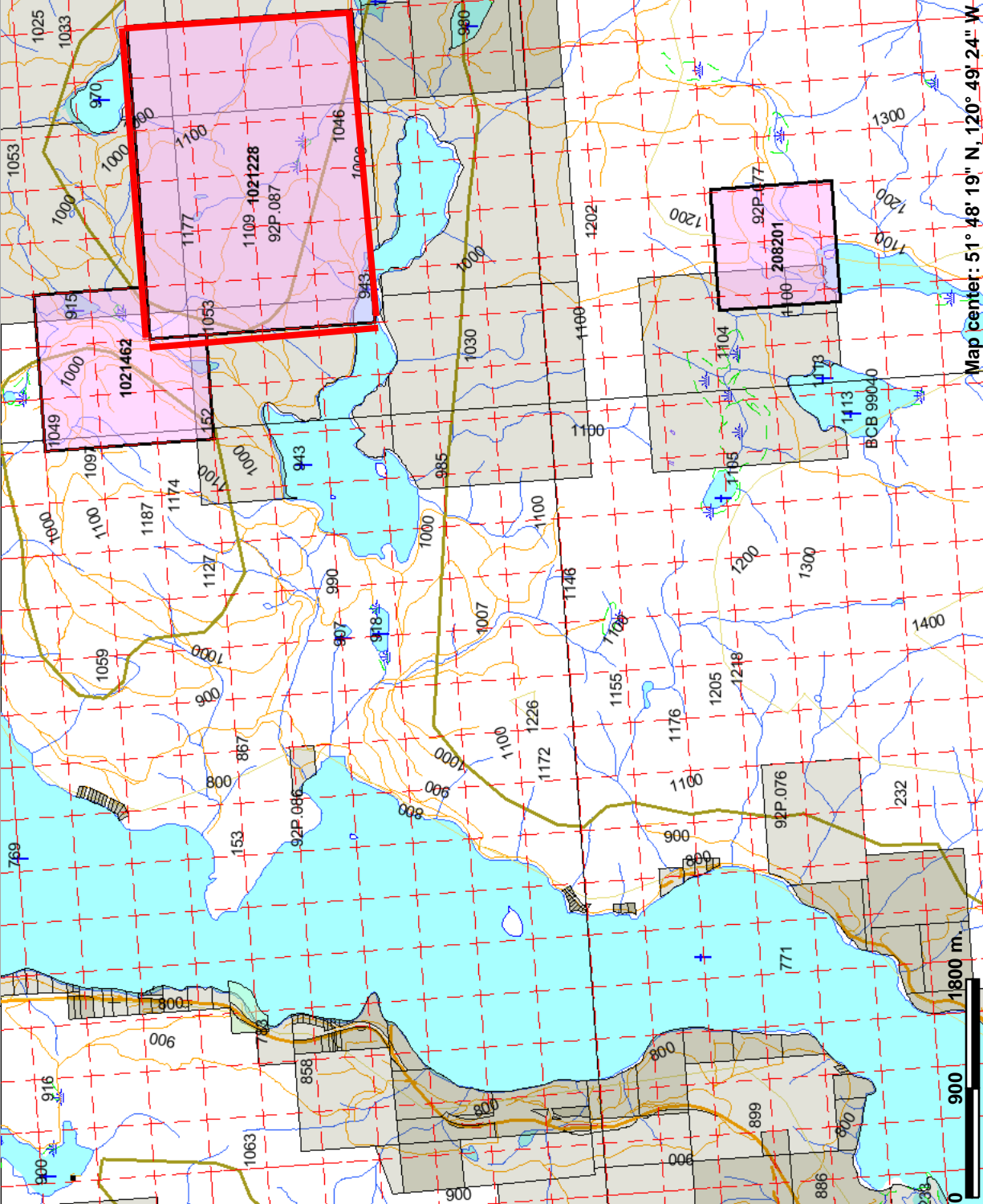
In 1976 Cominco drilled 10 percussion holes in a southern (previously untested) IP anomaly southwest of Howard Lake and the current Coppertonic claim. Low grade copper mineralization was reported although the detailed report remains unpublished.

In 1990 Cominco Ltd completed a further program of 13.5 line-km of IP and ground magnetics over what is now believed to be covered by the Coppertonic claim. An area showing a moderate chargeability anomaly (+15 mv/V) associated with a resistivity low, measuring approximately 250 metres in width and occurring on two north-south oriented lines, was discovered approximately one kilometer southeast of Potlicker Lake on the north-eastern boundary of the Coppertonic mineral claim. The anomaly is open ended towards Coppertonic.

In 1993 Pioneer Metals further tested the high chargeability anomaly in the area northeast of Howard Lake (immediately west of the current Coppertonic claim) with a program of three short diamond drill holes (63 m total). Minimal copper was indicated although pyrite was ubiquitous.

In 1986 D. Ridley discovered quart-filled fractures containing up to 2% copper and 1.4 g/t gold in a syenitic portion of the Canim stock southwest of Howard Lake (southwest of the current Coppertonic claims). Additional prospecting revealed gold values of greater than 500 ppb in narrow, widely spaced fracture fillings locally within the stock.

In 2010 Fjordland Exploration Inc. staked a large area that included the current Coppertonic claims and completed a program of reconnaissance soil sampling (148 samples). The Fjordland claims subsequently expired on November 30, 2012.



Map center: 51° 48' 19" N, 120° 49' 24" W

Scale: 1:50,000

Legend

- Indian Reserves
- National Parks
- Conservancy Areas
- Parks
- Federal Transfer Lands
- MTO Grid (MTO)
- Mineral Tenure (current)
- Mineral Claim
- Mineral Lease
- Mineral Reserves (current)
- Placer Claim Designation
- Placer Lease Designation
- No Staking Reserve
- Conditional Reserve
- Release Required Reserve
- Surface Restriction
- Recreation Area
- Others
- First Nations Treaty Related Lands
- Survey Parcels
- BCGS Grid
- Contours (1:250K)
- Contour - Index
- Contour - Intermediate
- Area of Exclusion
- Area of Indefinite Contours
- Transportation - Points (TRIM)
- Helipad
- Transportation - Lines (TRIM)



This map is a user generated static output from an Internet mapping site and is for general reference only. Data layers that appear on this map may or may not be accurate, current, or otherwise reliable. THIS MAP IS NOT TO BE USED FOR NAVIGATION.

Figure 2

Geological Setting and Mineralization

Regional Geology

Geologically, the Copperton property is located within the accreted Quesnel terrane, a narrow, north northwesterly trending disrupted but nearly continuous belt from the southern to northern provincial boundaries ($\pm 2,000$ kms). The belt consists of volcanic, sedimentary and intrusive rocks of Triassic to Jurassic Age, which host alkalic porphyry copper - gold deposits and calc-alkalic copper-molybdenum deposits. The belt is interpreted to have formed in an island arc environment that accreted to the North American Craton ± 180 Ma. The Canim stock, located southwest of the Copperton claim, is predominantly monzonite in composition. It has recently been dated as 196 Ma old (early Jurassic) which is comparable to mineralized monzonite stocks occurring at the Woodjam deposits located 60 kilometres to the northwest (averaging 197 Ma) and close to the ages at the Mount Polley Mine located 100 kilometres to the northwest (mineralized intrusives range in age between 203 and 205 Ma). Post-accretion faulting and post-accretion Eocene volcanism resulted in the subsequent deposition of post mineral volcanic rocks and the establishment of horst and graben structures. Uplifted horsts are regionally prone to having the Eocene section eroded off while it is often preserved in the down dropped grabens. Contacts with Eocene strata can consequently be interpreted as probable faults.

Property Geology

Fox (1973) provides a detailed account of the geology in the area including the present Copperton claim:

“Volcanic sediments ... comprise a conformable sequence of finely banded and laminated tuff, siltstone and greywacke and massive, poorly bedded greywacke and sandstone Beds strike northeasterly and dip either vertically or steeply east or west and strike parallel to the Howard Lake fault. Close to Howard Lake, beds are vertical and a broad hornfels zone has formed in the sediments west and northwest of Howard Lake adjacent to the Canim Lake stock, a large body of diorite and syenodiorite outcropping along the shore and steep bluffs near Canim Lake. Sediments have been hardened, bleached along fracture planes, fractured and laced with numerous seams and fine stringers of pyrite and occasionally chalcopyrite and bornite. Aggregates are also common. Finely disseminated sulphides and crystal pyrite content decreases to the north and beyond the hornfels zone, the sediments contain only a few widely disseminated grains, lenses and streaks of pyrite parallel to bedding plane. Basalt and andesite ... outcrop north and west of Potlicker Lake and south of Howard Lake. These rocks are massive, structure less, generally highly weathered and poorly exposed. Volcanic rocks of this unit appear to be interlayered with breccias of...and are cut by intrusive rocks ofThey are dark coloured, fine grained, equigranular to slightly prophyritic augite andesite and basalt. Dark, lath-shaped plagioclase predominates associated with black pyroxene altered to chlorite and epidote. Pyrite is common but south of Howard Lake outcrops of basalt contain up to 10% pyrite and are highly altered to epidote and chlorite. Small amounts of disseminated volcanic breccia ... and conglomerate form massive,

blocky outcrops weathering brown, fresh surfaces are dark grey to black. These rocks outcrop east of Paul Creek and near Potlicker Lake. The breccia consists of subrounded fragments ranging from a few millimetres to 5 cm. enclosed by a dark, fine grained, friable matrix composed of feldspar and mafic minerals. Fragments range considerably in lithology. Outcrops near Paul Creek contain rounded volcanic fragments of augite porphyry, porphyritic andesite, reddish fine grained andesite, dacite and amygdular basalt. Outcrops east of Potlicker Lake contain volcanic fragments and rounded grey and pinkish diorite and syenite in a dark basaltic matrix. **Many of the diorite and syenite fragments are mineralized with disseminated pyrite and chalcopyrite.** Volcanic fragments enclosed by a hard basalt matrix predominate in breccia outcropping west of Potlicker Lake.

Intrusive rocks ...comprise the Canim Lake, Howard Lake and Paul Point Stocks. The Canim Lake body consists of grey, light coloured diorite which outcrops along the Rocky Point access road and on steep bluffs farther east towards Howard Lake. The stock is composed almost entirely of medium grained, hypidiomorphic-granular diorite locally altered to syenodiorite and possibly monzonite. A dark, hornblende-rich marginal phase occurs along the east edge of the stock where it lies against hornfelsed sediments of the Nicola Group. The diorite phase is grey, composed of blocky hornblende and grey to white tabular plagioclase. Elsewhere, the diorite is altered to pinkish diorite and monzonite composed of about equal amounts of greenish plagioclase, hornblende, and pinkish potassic feldspar that form coarse poikilitic grains to 5 mm in size.

Chalcopyrite, bornite and pyrite occur on joint surfaces in syenodiorite and monzonite exposed on steep bluffs east of the main access road to Howard Lake. Fracture fillings contain quartz along with the sulphide grains and a narrow envelope of pinkish feldspar has developed along the joint surface. Valley slopes north of Howard Lake are underlain by rocks of the Howard Lake stock. It is finer grained and darker than the Canim Lake stock and is a multiphase body composed of diorite, syenodiorite and locally monzonite and syenite. Rocks are highly fractured, usually pyritic, and weather to brownish gossanous outcrops. The stock is cut by small porphyritic dykes and apparently by intrusive breccia and syenite of unit ...Rocks range from diorite composed of pyroxene, hornblende and grey lath-shaped plagioclase to coarser grained varieties consisting of mottled grey and pink syenodiorite and monzonite. Disseminated pyrite and chalcopyrite are common accessory constituents of the stock but the tenor of this material is very low. Sulphide grains occur in highly sheared and altered diorite exposed in road cuts along the main access road leading to Pat Lake. Malachite and disseminated sulphide grains occur in highly sheared and altered diorite exposed in road cuts along the main access road leading to Pat Lake. The Paul Point stock outcrops east of Paul Creek. It is faulted against sediments of unit... to the west and appears to be enclosed by volcanic rocks and breccia of units ... to the south and east, It is a dark diorite rich in pyroxene, hornblende, magnetite, and dark tabular plagioclase. The stock is much darker than either the Canim Lake body or the Howard Lake stock, and in some outcrops approaches gabbro in composition. Much of the stock is rich in magnetite and exposures on the hilltop northwest of Potlicker Lake contain abundant pyrite. Syenite and syenite breccia outcrop along several logging roads west of Pat Lake. The syenite is a complex intrusive breccia

Coppertonic Geology

| | | |
|----------|------------------------------|---|
| T-v, | Eocene, | Volcanic conglomerate, sandstone |
| Tr-monz, | L Triassic-E Jurassic | Quartz monzonite, monzonite, diorite |
| uTr-vs, | Late Triassic | Volcaniclastic succession, sandstone, conglomerate, siltstone, tuff |
| basalt, | Late Triassic-early Jurassic | basalt |

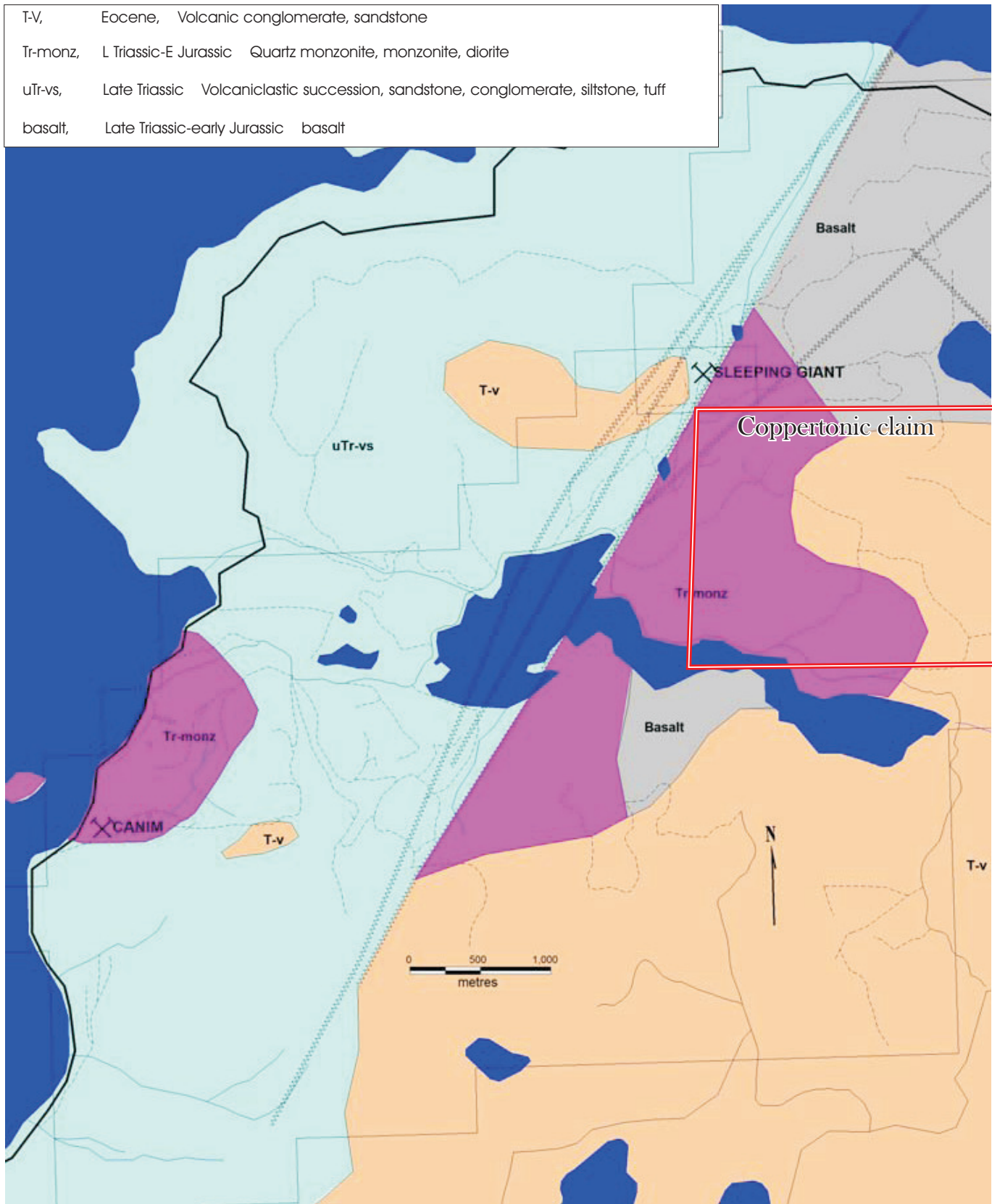
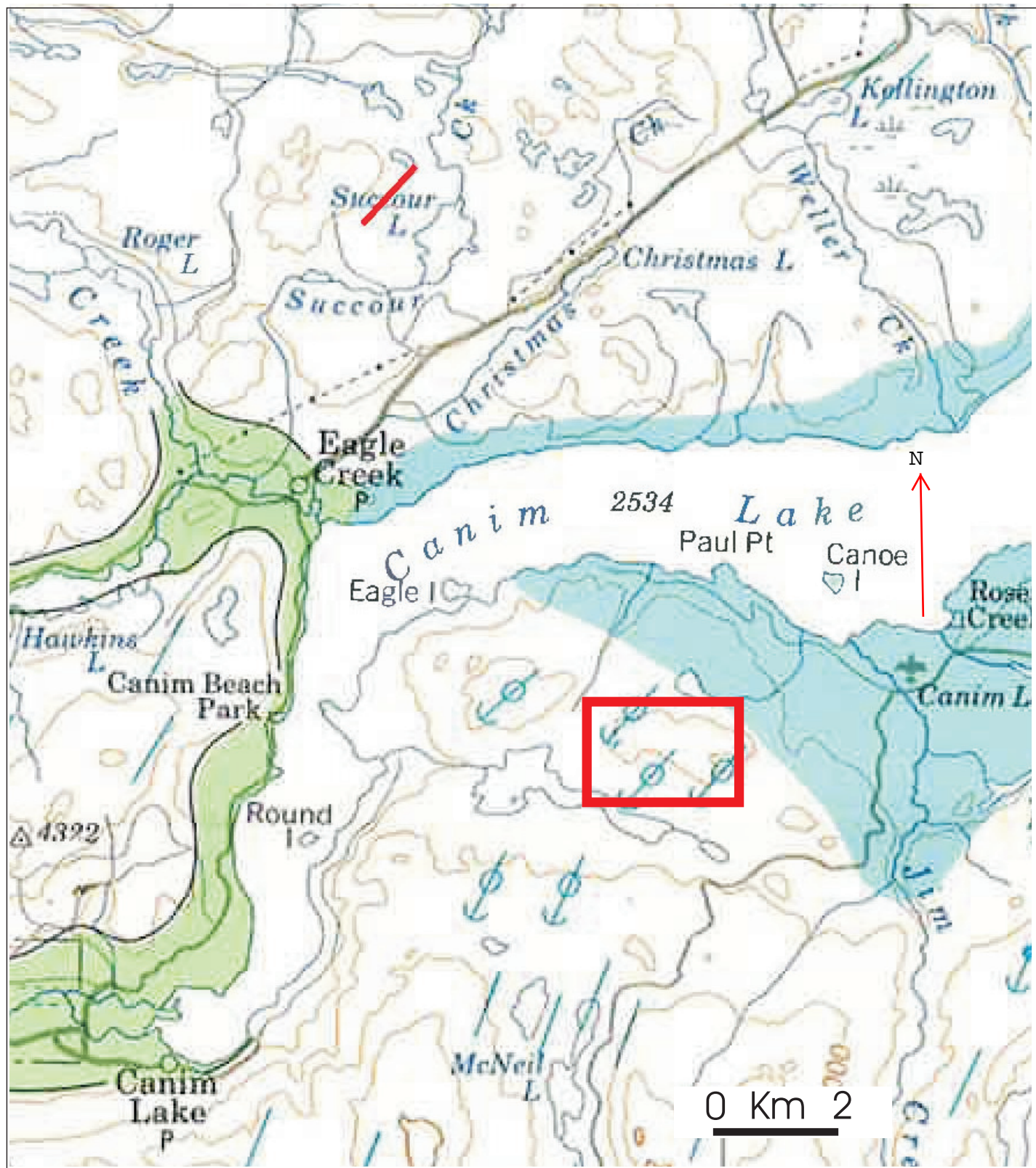


Fig 3



Ice Direction Coppertonc Area

Figure 4

composed of subangular dioritic and syenitic fragments set in a pinkish monzonite or syenite matrix. The breccia is in many places cut by narrow stringers and veinlets of coarse grained syenite. Disseminated pyrite and chalcopyrite occur in both fragments and matrix and occasionally on fractures. This body was known as the “Pat Lake Showing”. Intrusive breccia ...occurs 500 feet to the south. This breccia is much darker than the syenite breccia and is typically a gray rock mottled pink and green. It appears to form a stock-like body 2,000 by 1,400 feet. The breccia is composed of pinkish syenitic and monzonitic subangular to subrounded fragments enclosed by a chlorite-rich dioritic matrix. Stringers of epidote and pinkish feldspar are common. Some of the fragments have pinkish mantles and these tend to merge with the enclosing groundmass. Pyrite, chalcopyrite, and bornite occur on fractures and disseminated in breccia fragments and enclosing matrix. Epidote, pink feldspar, chlorite and magnetite are associated with the sulphides and form irregular patches and alteration envelopes along the fractures. This body was known as the “Breccia showings”.

The generalized local geology is derived after 2006 work by Paul Schiarizza and Amy Boulton of the BC Geological Survey.

DEPOSIT TYPES

Porphyry deposits are the most important source of copper in the world, with ore materials generally extracted from large bulk tonnage operations, mined through open-pit methods. In BC, porphyry deposits are principally found within the Quesnellia and Stikinia Terranes. Porphyry deposits are commonly comprised of largely felsic rocks in high-level plutonic stocks with copper dominantly occurring in the minerals chalcopyrite ± bornite, in stockwork-style veins, and as finer disseminations.

Porphyry deposits can be broadly divided into calc-alkaline Cu-Mo ± Au systems, and alkaline Au-Cu targets. Deposits of both geochemical affinities occur in the Quesnellia Terrane, Alkalic Au-Cu porphyry deposits occur in only a few mineral provinces worldwide, such as the Lachlan Fold Belt of New South Wales, Australia (e.g. Ridgeway, Cadia, North Parkes), and the Quesnellia terrane in British Columbia (e.g. Mount Polley, Mount Milligan, Lorraine, and Afton-Ajax). Alkalic deposits are enriched in gold and are thus favourable exploration targets, however they are difficult to find as they are associated with small-volume pipe-like intrusions, have narrow peripheral hypogene alteration (potassic, calc-potassic, sodic, calc-sodic and propylitic alteration) assemblages, and they typically have no associated advanced argillic alteration assemblages.

Some current reserves for comparable deposits hosted in the Quesnel Terrane are as follows:

- Mount Polley Mine, 87.3 Mt (proven and probable) reserves of 0.29% copper, 0.30 grams per tonne gold and 0.40 grams per tonne silver (Imperial Metals, 2012).

- Copper Mountain Mine, put into production in 2011 with reserves of 233 Mt of 0.36% Cu (NI 43-101 Technical Report, August 21st, 2009).
- Highland Valley Copper Mine, (proven and probable) reserve of 623.7 Mt of 0.31% copper and 0.01% molybdenum (Teck Resources Limited NI 43-101 January 4th, 2011).

EXPLORATION

(*All Historical with None Completed by La Quinta Resource Corporation)

Exploration began in the general area of the current Coppertonic in 1968 and included programs in 1972, 1974, 1977, 1986, 1990, 1993, and 2011. A summary of what has been completed is as follows:

| <i>Year</i> | <i>1968</i> | <i>1972</i> | <i>1974</i> | <i>1977</i> | <i>1986</i> | <i>1990</i> | <i>1993</i> | <i>2011</i> |
|------------------------------|-------------|-------------|-------------|-------------|-------------|-------------|-------------|-------------|
| Ground Mag | | 104 km | | | | | | |
| Ground IP | | 32 km | | | | 13 | | |
| Soil Samples | | ±675 | | | | 186 | | 148 |
| Rock Samples | ? | 26 | | | 6 | 16 | | |
| Percussion Drilling (Holes) | | | 9 | 10 | | | | |
| Percussion Drilling (Meters) | | | 1,220 | 802 | | | | |
| Diamond Drilling (Holes) | | | | | | | 3 | |
| Diamond Drilling (Metres) | | | | | | | 63 | |

Soil Samples, 1,009 reported, soil samples generally were only moderately anomalous (generally less than 150 ppm) with occasional spikes exceeding 500 ppm. Very few gold analysis completed.

Rock Samples, 48 reported, results generally none descript with values maxing at 4,500 ppm.

Ground Mag, 104 line kilometres (65 line miles).

Ground Induced Polarization, 43 line kilometres, predominantly pole-dipole array on 200 foot electrode spacings).

Percussion Drilling, 19 holes, 2,022 metres (reports indicate that the 9 holes drilled by Dome Mines Limited to 1974 may actually be 18 with only nine shown on available maps and the location of the remaining 9, if in existence, unknown).

Diamond Drilling, 3 holes 63 metres total.

The Author of this report is familiar with the authors of all the reports compiled in this section and believes that the procedures used were professional and the data reliable. All reports, excepting the Fjordland Exploration reports of March and December 2011 were written before the requirements of NI 43-101 came into effect. The Author is likewise familiar with Acme Analytical Labs which preformed the bulk of the analytical work and believes that the results quoted are reliable.

The owner of the Coppertonic property, La Quinta Resource Corporation, has not yet itself completed any exploration on the project.

Coppertonic Compilation

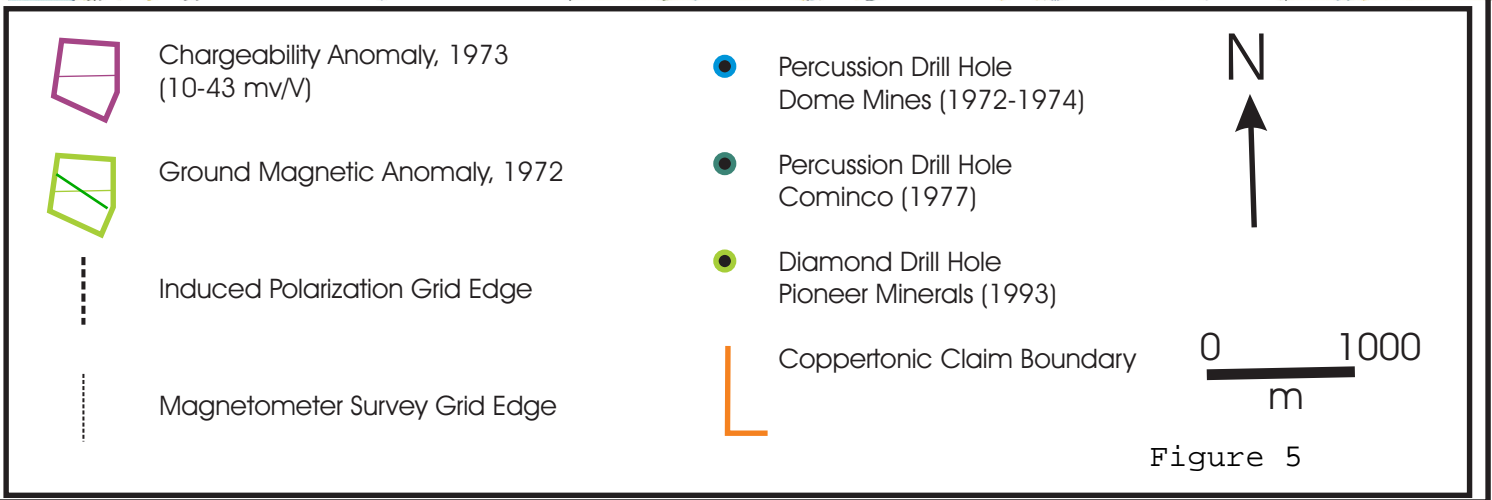
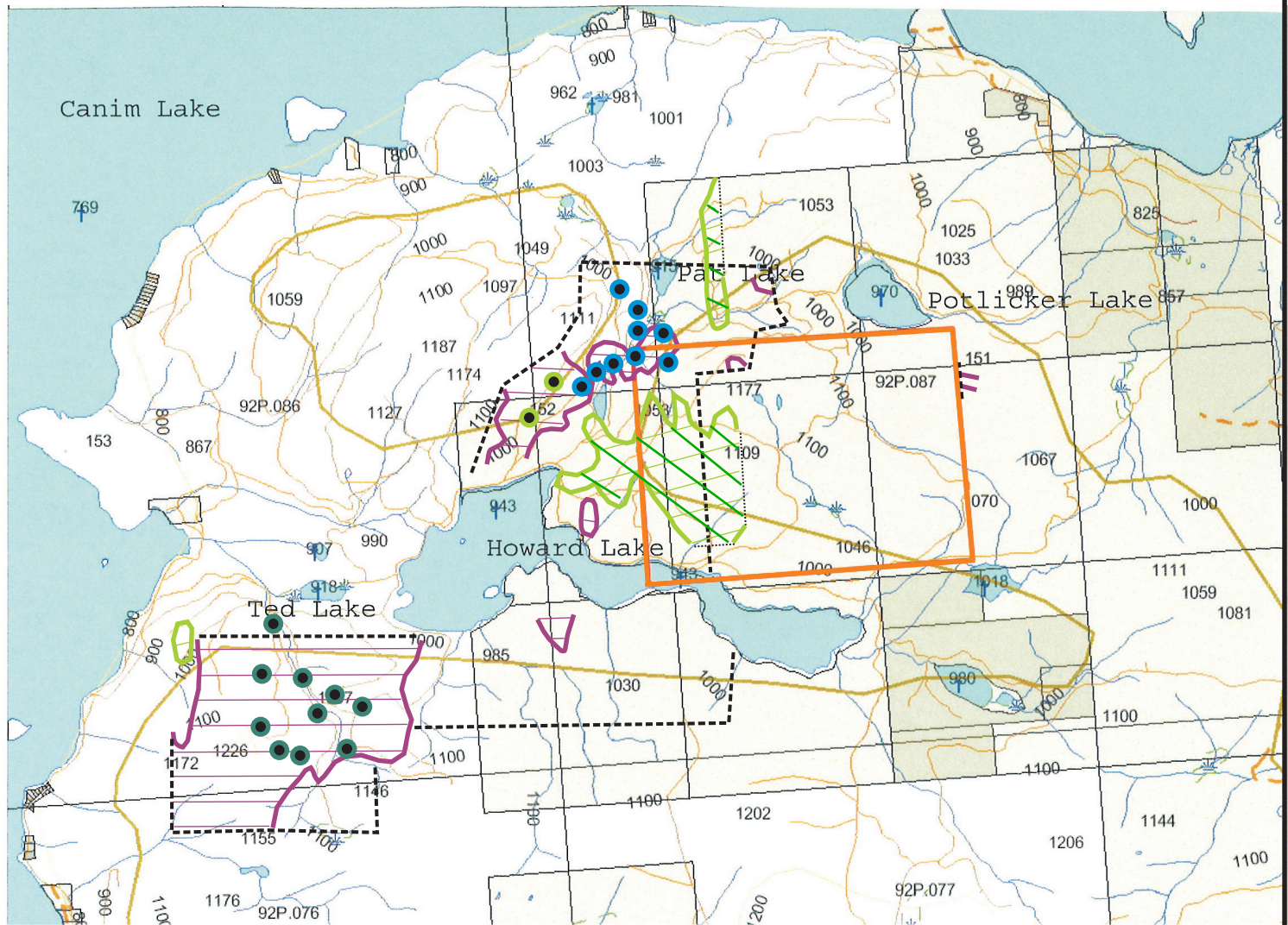


Figure 5

DRILLING

The owner of the Coppertonic property, La Quinta Resource Corporation, has not completed any drilling on the property. Historic drilling has been summarized in earlier sections.

SAMPLE PREPARATION, ANALYSIS AND SECURITY

The Author of this report is familiar with the authors of all the reports (mostly written pre NI 43-101) used to write this report and believes that the procedures used were professional and the data reliable. The Author is likewise familiar with Acme Analytical Labs which preformed the bulk of the analytical work and believes that the results quoted are reliable. The author is satisfied with all historical information which deal with sample preparation analysis and security and which form much of the basis of this report.

DATA VERIFICATION

No data verification has been undertaken by the author who notes that reviewing analytical work particularly that preformed Acme Analytical Laboratories Ltd., that internal standards and duplicate analysis were routinely used and preformed. The author is satisfied with the integrity of the historic data.

MINERAL PROCESSING AND METALLURGICAL TESTING

The author is not aware of any mineral processing or metallurgical testing on the Coppertonic property.

MINERAL RESOURCE ESTIMATES

There have been no resources estimated for the Coppertonic property.

MINING METHODS

N.A.

RECOVERY METHODS

N.A.

PROJECT INFRASTRUCTURE

N.A.

MARKET STUDIES, PERMITTING AND SOCIAL OR COMMUNITY IMPACT

N.A.

CAPITAL AND OPERATING COSTS

N.A.

ECONOMIC ANALYSIS

N.A.

ADJACENT PROPERTIES

There are no adjacent properties excepting the eastern portion of the historic Sleeping Giant showing which is described inclusively in the context of this report.

OTHER RELEVANT DATA AND INFORMATION

The author is not aware of any other relevant data or information.

INTERPRETATIONS AND CONCLUSIONS

The Coppertonic mineral claim covers a largely untested portion of an alkalic copper-gold porphyry target located in south-central BC. The geological setting of this target, with is predominantly underlain by Quesnellia volcanic rocks with a proximal monzonite pluton dated at 198 Ma, is similar to the geologic environment at several important BC porphyry deposits including New Afton, Woodjam and Mount Polley. Over the last forty years several mining companies have explored this prospect and its immediate area predominantly on the basis of geophysical data collected between 1972 and 1974. While these efforts have not resulted in a significant discovery they collectively confirm that the essential items for an alkali porphyry copper-gold discovery are present. The Coppertonic claim covers much of the untested portion of this target as defined by a 1972 ground magnetic survey and subsequent government mapping which indicates that much of the claim is underlain by diorite and or monzonite. Induced polarization surveying, predominantly completed in 1972, has defined a substantial target to the west and southwest of the current claim which has focussed historical percussion and diamond drilling. In hindsight this “IP” feature may be caused by a pyrite halo with most or the area of the Coppertonic claim being left untested. Most of the Coppertonic claim has not

been gridded and consequently offers an opportunity to define drill targets using soil sampling, induced polarization and diligent prospecting.

RECOMMENDATIONS

Complete a new reconnaissance level prospecting initiative. Some of the focal points should include a 1993 vintage induced polarization anomaly which is open ended and which occurs over approximately 250 metres approximately 500 metres north of the northeast corner of the Coppertonic claim (values to 23 mv/v). Several east-west oriented grid lines spaced 500 metres apart and running the 2,500 metres from the western boundary of the property, will initially facilitate prospecting, rock sampling and soil sampling and would, subject to success of the above, be used for further geophysical surveying. Claim expansions to the south and southwest should be considered. Most of this work could be completed for less than \$50,000.

19.0 REFERENCES

- Bruaset, R.U., Aug 1977, Percussion Drilling on the MIK #1 mineral Claim, for Cominco Limited, Assessment Report # 6,353
- Holcombe, D.H., Jan 1991, Internal Report for Cominco Limited (Western Division), on Induced Polarization Surveying on the Nim Claims, Clinton Mining Division, BC, (unpublished).
- Fox, P.E., P. Eng., March 1973, A Geochemical and Geophysical Report on the R.M. Claims, Assessment Report # 4,259
- Lloyd, J., P. Eng., June 1973, A report on a Time Domain Induced Polarization Survey, for Fox Geological Consultants Limited, Assessment Report # 4,366
- Peters, L.J., March 2011, Assessment Report On the Howard Lake Property for Fjordland Exploration Inc.
- Peters, L.J., Dec 2011, Assessment Report On the Howard Lake Property for Fjordland Exploration Inc.
- Ridley, D.W., Nov 1990, Soil Geochemistry, Geology and Prospecting on the Sleeping Giant Group, Assessment Report #20,452
- Ridley, D.W., May 1986, A prospecting Report on the Canim #1 Mineral Claim, Assessment Report # 14,924
- Ridley, D.W., and Dunn, D., Jan 1994, Drilling Report on the Sleeping Giant Property for Pioneer Metals Corporation, Assessment Report #23,280
- Schiarizza, P, 2013: Bedrock Geology Between Thuja and Woodjam Creeks, South-central British Columbia, Open file 2013-05, BC Geological Survey.

Certificate of Author, James William (Bill) Morton P.Geo

I, James William (Bill) Morton, P.Geo., do hereby certify that:

- 1.) I am currently employed as a consulting geologist by:
Mincord Exploration Consultants Ltd. :110-325 Howe Street, Vancouver, BC,
V6C 1Z7 (telephone 604 681-0419).
- 2.) I am a graduate of Carleton University, B.Sc. Geology 1972 and The University
of British Columbia (M.Sc. Graduate Studies, 1976).
- 3.) I am registered as a Professional Geoscientist by the Association of Engineers
Geoscientists of B.C. (No. 18303).
- 4.) I have worked as a geologist for more than 30 years since graduation from
university extensively in British Columbia, the Yukon Territory, the states of
Nevada and Washington and in Mexico.
- 5.) I have read the definition of “qualified person” set out in National Instrument 43-
101 (“NI 43-101”) and certify that by reason of my education, affiliation with a
professional association (as defined in NI43-101) and past relevant work
experience, I fulfill the requirements to be a “qualified person” for the purposes of
NI 43-101”.
- 6.) That I have authored the technical report dated Aug 30, 2013 titled “SUMMARY
REPORT ON THE COPPERTONIC MINERAL PROPERTY, BRITISH
COLUMBIA, CANADA” relating to the Coppertonic mineral property. I visited
the property most recently in 2004 but have been within ten kilometers of the
property as recently as 2013.
- 7.) I am not independent of La Quinta Resource Corp. in accordance to the
requirements of section 1.5 of NI 43-101 because of ownership in a modest
number of its shares.

- 8.) I am not aware of any material fact or material change with respect to the subject matter of the Technical Report that is not reflected in the Technical Report, the omission to disclose which makes the Technical Report misleading.
- 9.) I have read National Instrument 43-101 and Form 43-101F1 and confirm that the Technical Report has been prepared in compliance with that instrument and form.
- 10.) I do hereby consent to the filing of the Technical Report with the British Columbia Securities Commission, the Alberta Securities Commission and the Ontario Securities Commission, the TSX Venture Exchange and the Canadian Trading and Quotation System Inc. regulatory authorities and other regulatory authority and any publication by them, including SEDAR filings and electronic publication in the public company files on their websites accessible by the public, of the Technical Report. I also consent to written disclosure by La Quinta Resource Corp. in public information documents so being filed provided that the entire report is filed and that I am provided an opportunity to review excerpts or summaries of the report in the context that they are being used.
11. As of the date of this certificate, to the best of my knowledge, information and belief, the Technical Report contains all scientific and technical information that is required to be disclosed to make the Technical Report not misleading.

Dated this 30th day of August 2013.

Bill Morton

J.W. (Bill) Morton, P.Geo.