

**FORM 51-102F3
MATERIAL CHANGE REPORT**

1. NAME AND ADDRESS OF COMPANY

Nexus Gold Corp.
Suite 720, 700 West Pender Street
Vancouver, BC
V6C 1G8

2. DATE OF MATERIAL CHANGE

January 8, 2019

3. PRESS RELEASE

The press release was issued on January 8, 2019 and was disseminated through the facilities of a recognized newswire services. A copy of the press release was filed on SEDAR.

4. SUMMARY OF MATERIAL CHANGE

Nexus Gold recovers high-grade samples at new Dakouli 2 Project, Burkina Faso, West Africa.

- Visible gold and coarse, nuggety samples recovered from new zone
- Select sample highlights include 29.5 g/t Au, 27.5 g/t Au, and 12.4 g/t Au

5. FULL DISCLOSURE OF MATERIAL CHANGE

Full Description of Material Change

Vancouver, Canada – January 08, 2019 - Nexus Gold Corp. (“**Nexus**” or the “**Company**”) (TSX-V: NXS, OTCQB: NXXGF, FSE: N6E) is pleased to report initial sampling results from the recently acquired, 100% -owned, 98-sq km Dakouli 2 Gold Project, located on the Boromo-Goren Greenstone Belt, central Burkina Faso, West Africa.

Ground reconnaissance conducted recently by the Company to the west and south of the main orpaillage (artisanal zone) identified new near surface workings currently being exploited by artisanal miners. Rock samples collected from these new zones have returned assays up to 29.5 grams-per-tonne (“g/t”) gold (“Au”) with several containing various concentrations of visible gold, including coarse nuggety samples (see Figures 1 and 2).

A total of 12 samples were taken from the Northeast Zone. Six of the 12 returned significant grades, with values between 2.90 g/t Au and 29.5 g/t Au (see Table 1), including 27.5 g/t Au and 12.4 g/t Au from samples containing visible gold. The remaining six samples returned values from 0.005 to .192 g/t Au. Samples taken at the Northeast Zone were obtained between 8-18 meters below surface from artisanal shafts and pits.

In addition to the higher-grade rock samples, Company geologists have viewed the panned concentrates of these near surface materials being processed by the artisanal miners and noted that the gold being recovered was also coarse and nuggety in nature.



Figure 1: Visible gold in quartz sample recovered at the Dakouli 2 concession, November 2018



Figure 2: Close up of coarse gold nugget present in quartz recovered at the Dakouli 2 concession, November 2018

“The size of the workings and the coarse nature of the gold we have seen from the property so far makes this a very exciting prospect,” said Vice President of Exploration, Warren Robb, P.Geol. “These orpailages were first identified only a year ago and have now expanded to two areas of workings, given the coarse visible gold observed here it is not surprising,” continued Mr. Robb.

“The initial results from our early exploration activity at Dakouli are very encouraging,” said Alex Klenman, president & CEO. “We have already identified multiple zones of mineralization and have recovered some significant high-grade samples. The abundance of visible gold observed and recovered is certainly compelling. We will continue to conduct ground work in the

near term and gather needed data as we move towards a maiden drill program in the coming months,” continued Mr. Klenman.

Dakouli Samples – November 2018				
Sample-ID	Easting	Northing	Comment	g/t Au
DKL-001	636687	1445630	Qtz from orpaillage pit, about 8m depth, light grey to smoky qtz, looks like flat vein	3.15
DKL-004	636763	1445627	Milky qtz vein from orpaillage pit, about 8m depth, several pieces of VG show from panning	27.5
DKL-009	636828	1445661	Milky qtz vein from orpaillage pit, 18m depth	2.90
DKL-010	636767	1445652	Light grey qtz vein from orpaillage pit	4.93
DKL-011	636738	1445670	Qtz from orpaillage pit, VG show in panning and on a piece of quartz coming from the same shaft, about 10m depth	29.5
DKL-012	636677	1445642	Qtz from orpaillage pit, about 8m depth, VG show in panning	12.4

Table 1: Six of 12 Dakouli samples greater 1.00 g/t Au – November 2018

The Dakouli 2 exploration permit is located approximately 100 kilometers due north of the capital city Ouagadougou. The permit lies immediately south of and contiguous to the Niangouela concession, which has been explored by the Company over the past two years. Drilling at Niangouela has returned significant intercepts, including 26.69 g/t Au over 4.85m, including 132 g/t Au over 1m, and 4 g/t Au over 6m, including 20.5 g/t Au over 1m (see the Company news releases dated March 7, 2017 and April 5, 2017).

The Dakouli 2 property is located on the Boromo-Goren Greenstone belt and is bordered to the north by granitic rocks. It is also bisected by the Sabce Shear (see Figure 3) a major structural fault zone proximal to multiple gold deposits, which trends southwest northeast and bisects the entire long axis of the property.

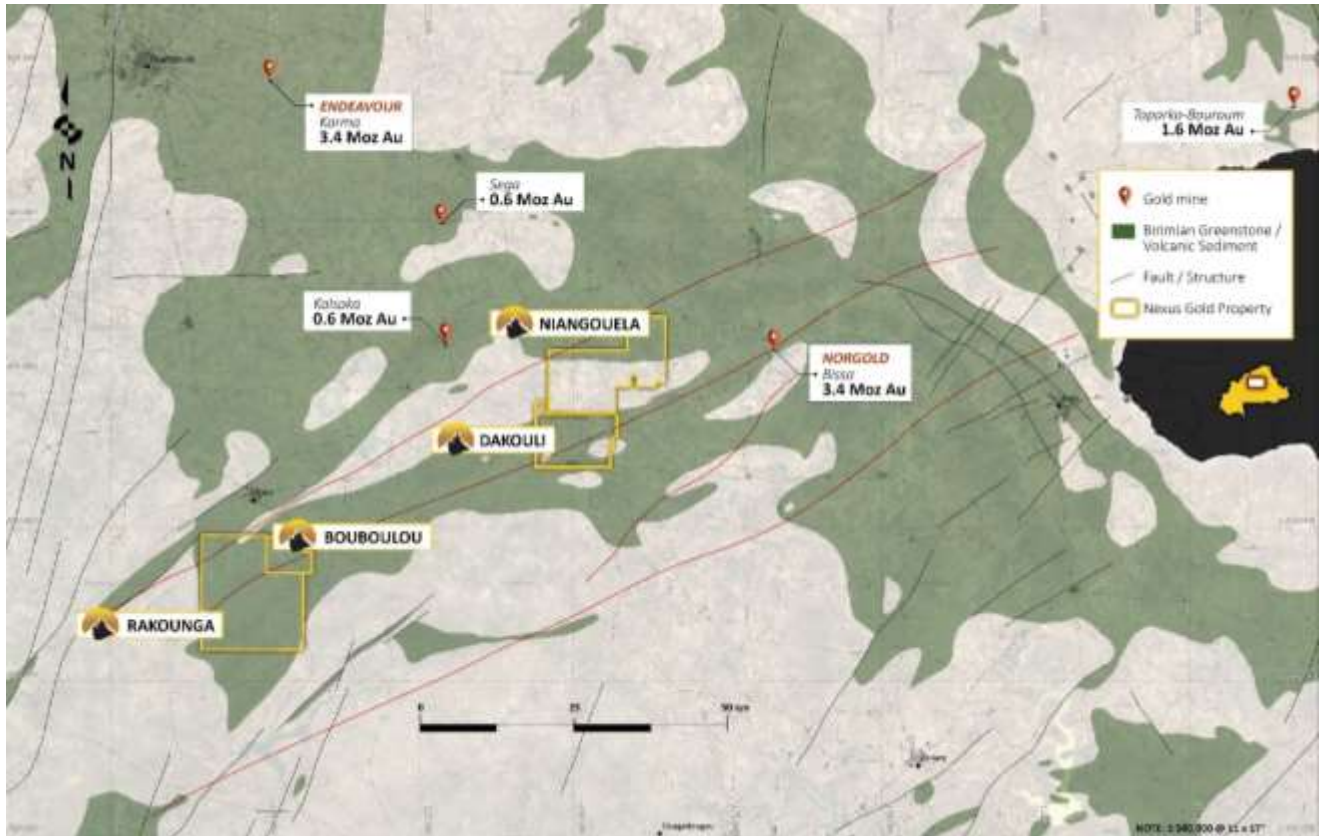


Figure 3: Nexus project locations with known faults in red

The Sabce Nord trend starts east of the open pits at Nordgold’s Bissa mine and continues through the new orpaillage located at the northeast corner of the Dakouli 2 permit, and the southeastern corner of the Niangouela permit (see Figure 4). It proceeds to the Boken Vein Orpaillage on the western boundary of Dakouli 2 extending approximately 12 kilometers across the Dakouli 2 property.

The Sabce Sud trend appears to span approximately four kilometers across the southern section of Dakouli 2, and includes the Black Vein Orpaillage, a series of deep shafts that trend sub parallel to the Sabce Sud trend. The Black Vein Orpaillage features abundant black quartz vein, similar to what is found at Nordgold’s satellite pit located approximately 20km to the east.

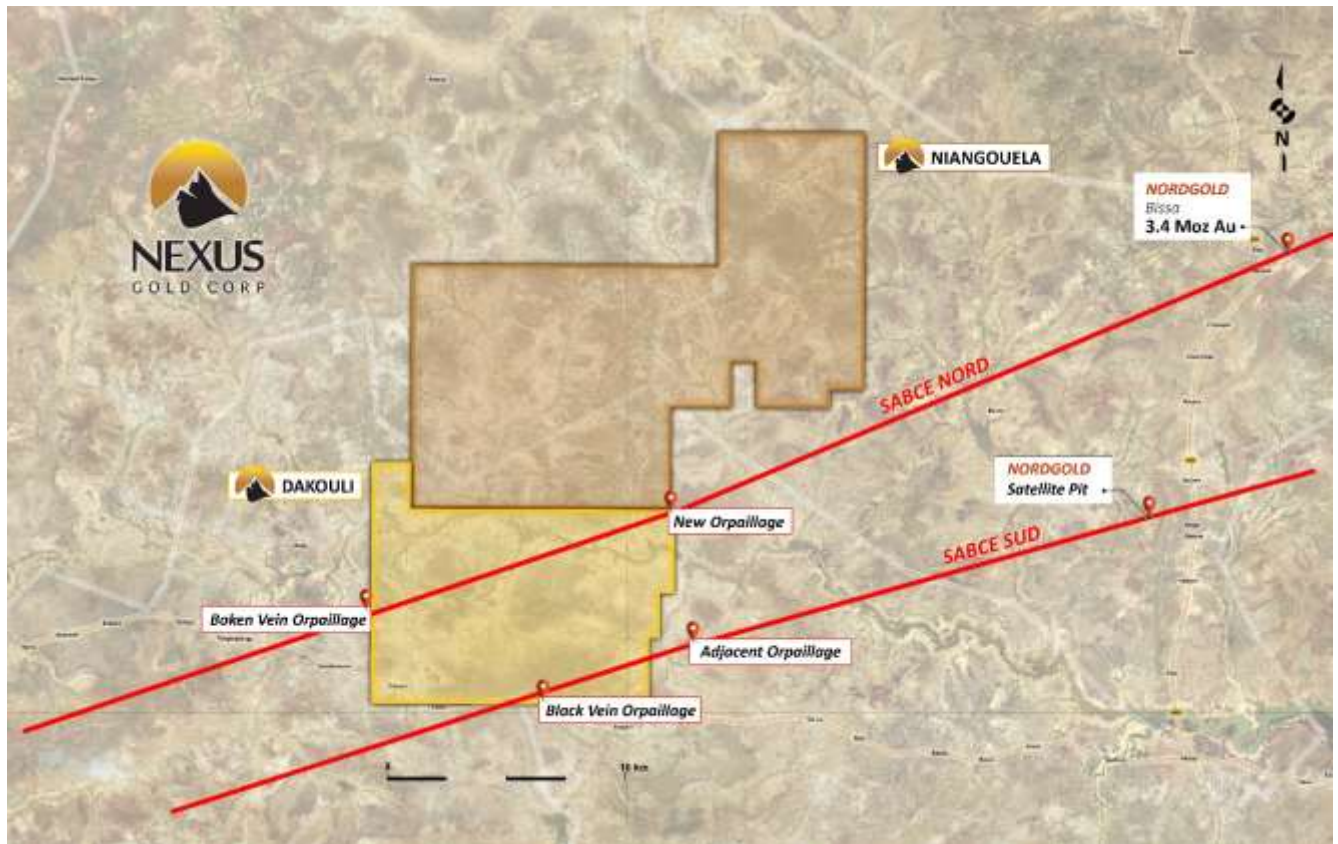


Figure 4: Nexus project locations with bisecting Sabce faults in red

Please note the size of the Dakouli 2 concession was incorrectly stated in previous news releases, the correct size is 98-square kilometres.

About the Company

Nexus Gold is a Vancouver-based gold exploration and development company operating primarily in Burkina Faso, West Africa. The company is currently concentrating its efforts on establishing a compliant resource at one or more of its four current Burkina-based projects which total over 560-sq kms (56,000+ hectares) of land located on proven gold belts and active mineralized trends.

Warren Robb P.Geo., Vice-President, Exploration, is the designated Qualified Person as defined by National Instrument 43-101 and is responsible for the technical information contained in this release.

On behalf of the Board of Directors of

NEXUS GOLD CORP.

Alex Klenman

President & CEO

604-558-1920

info@nexusgoldcorp.com

www.nexusgoldcorp.com

6. RELIANCE ON SUBSECTION 7.1(2) OF NATIONAL INSTRUMENT 51-102

Not applicable.

7. OMITTED INFORMATION

No information has been intentionally omitted from this form.

8. EXECUTIVE OFFICER

The name and business number of an officer of the Company through whom an executive officer who is knowledgeable about the material change and this report may be contacted is:

Alex Klenman
President & Chief Executive Officer

Tel: 604-558-1920

9. DATE OF REPORT

DATED this 8th day of January, 2019.