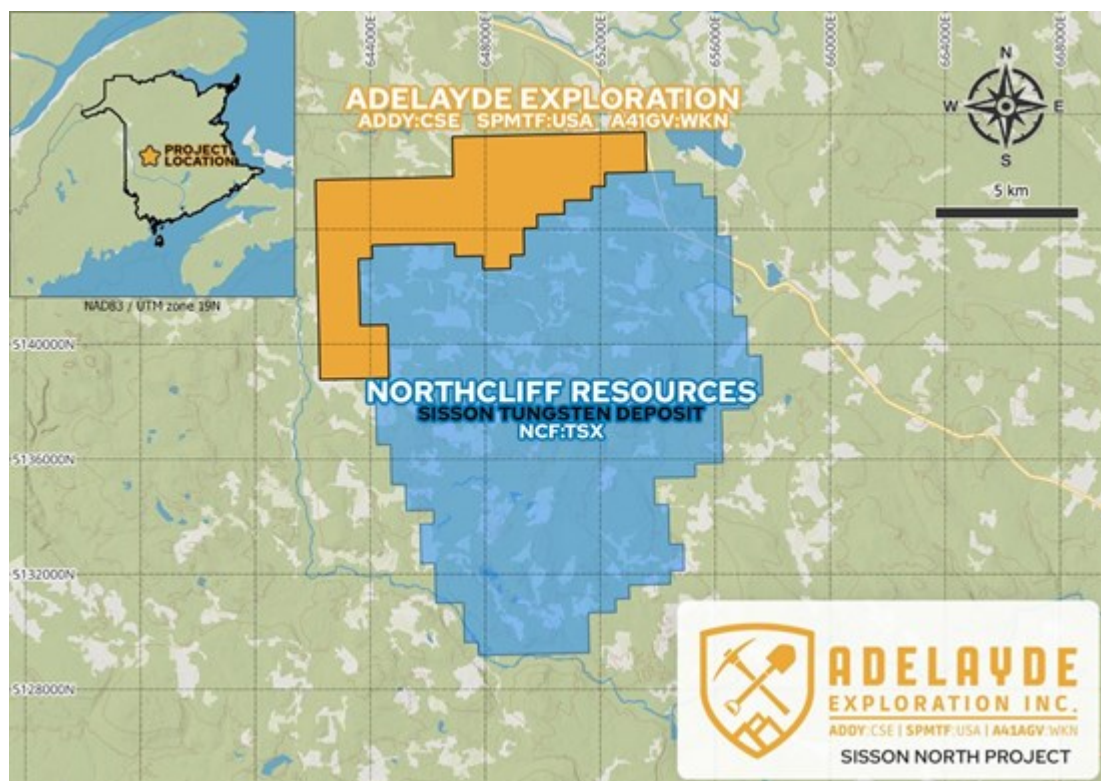


Adelayde Exploration Engages Geologic Partners for Sisson North Tungsten Project Work Program Directly Bordering Northcliff Resources Ltd.

Vancouver, British Columbia--(Newsfile Corp. - January 26, 2026) - Adelayde Exploration Inc. (CSE: ADDY) (OTCID: SPMTF) (WKN: A41AGV) (the "Company" or "Adelayde") is pleased to announce that the Company has engaged Geologic Partners as technical advisors to the Company's New Brunswick projects. Geologic Partners is an international geotechnical firm with associates across several continents since 2005, providing geological and exploration services to the exploration and mining industries. Associates and principals are registered as Qualified Persons to assist with the maiden work program on its Sisson North tungsten project located in New Brunswick, directly bordering Northcliff Resources Ltd.'s (NCF) Sisson Tungsten Mine.

The Sisson North tungsten project directly borders the Sisson Tungsten Mine in New Brunswick. On November 13, the Sisson Tungsten Mine was selected by the Prime Minister of Canada, Mark Carney, as one of the first "Nation-Building Projects."¹ Additionally, on August 7, 2025, Northcliff Resources Ltd. announced it secured approximately \$29 million CAD in combined funding from the U.S. Department of Defense and the Canadian Government to advance its project. Management cautions that past results or discoveries on properties in proximity to Adelayde may not necessarily be indicative of the presence of mineralization on the Company's properties.



Adelayde Project Map

To view an enhanced version of this graphic, please visit:

https://images.newsfilecorp.com/files/4360/281568_a373049c74a38bf1_002full.jpg

Adelayde recently announced (January 22, 2026) that it has joined the National Defense Industrial Association (NDIA) in support of the advancement of its critical and strategic mineral portfolio. The NDIA is a U.S.-based organization promoting national security by connecting industry and government.

James Nelson, President of Adelayde, stated, "Hiring a geologist familiar with the Sisson Mine is a key milestone as we work towards our maiden work program on the Sisson North Tungsten Project. Critical minerals, and tungsten in particular, have received increased attention in recent years as governments and industry seek to strengthen domestic supply chains and reduce reliance on foreign sources. Having also recently joined the NDIA, we look forward to its membership providing meaningful access to strategic relationships that can accelerate the advancement of our critical minerals projects. Critical minerals are increasingly important as supply chains remain highly concentrated and demand continues to grow across defense, energy, and advanced technology sectors. This environment is driving renewed focus on domestic exploration and development. Having raised flow-through funds, the Company is well financed to execute its planned exploration and work programs, and we look forward to a very active start to 2026."

Qualified Person for Mining Disclosure:

The technical contents of this release were reviewed and approved by Paul Lemmon, P.Geo., arms-length to the Company and a Qualified Person as defined by National Instrument 43-101.

About Adelayde Exploration Inc.

Adelayde's projects include three lithium projects in Clayton Valley, Nevada: the 1,136-acre McGee lithium clay deposit, which has a mineral resource estimate of 320 Mt @ 803 ppm Li for 1,369,000 indicated tonnes of lithium carbonate equivalent (LCE) and 157 Mt @ 865 ppm Li for 723,000 inferred tonnes of LCE, directly bordering SLB (formerly Schlumberger) and Century Lithium Corp.; the 280-acre Elon lithium brine project, which has access to some of the deepest parts of the only lithium brine basin in production in North America; and the 124-acre Green Clay lithium project. The Company also holds the 248-acre Clayton Ridge gold project in Esmeralda County, Nevada; the 4,722-acre George Lake South antimony project; and the 9,780-acre Sisson North tungsten project, both located in New Brunswick.

If you would like to be added to Adelayde's news distribution list, please send your email address to info@adelaydeexp.com.

Adelayde Exploration Inc.

"James Nelson"

James Nelson
President, Chief Executive Officer and Director

For more information regarding this news release, please contact:

Adelayde Exploration Inc.

James Nelson, President, CEO and Director
T: 604-646-6903
E: info@adelaydeexp.com
W: www.adelaydeexp.com

The CSE has neither approved nor disapproved of the contents of this press release.

Forward-Looking Statements

Certain information in this news release may contain forward-looking statements that involve substantial known and unknown risks and uncertainties. Forward-looking statements are often identified by terms such as "will", "may", "should", "anticipate", "expects" and similar expressions. All statements other than statements of historical fact included in this news release are forward-looking

statements that involve risks and uncertainties such as the proposed use of proceeds from the Financing. There can be no assurance that such statements will prove to be accurate and actual results and future events could differ materially from those anticipated in such statements. The reader is cautioned that assumptions used in the preparation of any forward-looking information may prove to be incorrect. Events or circumstances may cause actual results to differ materially from those predicted, as a result of numerous known and unknown risks, uncertainties, and other factors, many of which are beyond the control of Adelayde. The reader is cautioned not to place undue reliance on any forward-looking information. Such information, although considered reasonable by management at the time of preparation, may prove to be incorrect and actual results may differ materially from those anticipated. Forward-looking statements contained in this news release are expressly qualified by this cautionary statement. The forward-looking statements contained in this news release are made as of the date of this news release and Adelayde disclaims any intention or obligation to update or revise such information, except as required by applicable law.

¹ www.pmgc.ca/en/news/news-releases/2025/11/13/prime-minister-carney-announces-second-tranche-nation-building-projects



To view the source version of this press release, please visit <https://www.newsfilecorp.com/release/281568>