

March 2012

**Revolver Property  
(Luck-North & Lucky-South Blocks)**

**Lac Kénogami, Québec, Canada,**

**Compilation and Geological  
Field Work of 2011**

**By  
Bertrand Brassard, P. Geo., M.Sc.  
Lac Kénogami, Québec  
(OGQ # 1067)**

**March 2012**



---

Bertrand Brassard, P.Geo., M.Sc.  
(OGQ # 1067)

**TABLE OF CONTENT**

	<b>Page</b>
Location and Description .....	3
Previous Works .....	4
Geological Setting Mineralization .....	6
Table of Showings and Descriptions .....	6
Table of Diamond Drill Holes on Revolver Property .....	7
Table of Diamond Drill Holes on Croix 3 Showing .....	7
Results of 2011 and Recommendations .....	8
Figure 1: Location Map - Revolver Property .....	8
Figure 2: Roads & Topographic Map - Revolver Property (Lucky-North & Lucky-South Blocks) 1:100 000 .....	10
Figure 3: Geological regional Map - Revolver Property (Lucky-North & Lucky-South Blocks) 1:100 000 .....	12
Figure 4: Claim Map & Topography - Revolver Property (Lucky-North & Lucky-South Blocks) 1:50 000 .....	14
Figure 5: Google Map & Access - Revolver Property (Lucky-North & Lucky-South Blocks) 1:50 000 .....	16
Figure 6: Geological Map & Showings - Revolver Property (Lucky-North & Lucky-South Blocks) 1:50 000 .....	18
Figure 7: Geological & Geophysical Map (EM) - Revolver Property (Lucky-North & Lucky-South Blocks) 1:50 000 .....	20
Figure 8: Samples & Claims Numbers Revolver Property – Lucky-North Block 1:20 000 .....	22
Figure 9: Samples & Google Map - Revolver Property – Lucky-North Block 1:20 000 .....	24
Figure 10: Samples, Geology & Geophysic (EM) - Revolver Property – Lucky-North Block 1:20 000 .....	26
Figure 11: Samples Results, Geology & Geophysic (EM) - Revolver Property – Lucky-North Block 1:20 000 .....	28

Figure 12: Samples & Claims Numbers - Revolver Property – Lucky-South Block 1:20 000 .....	30
Figure 13: Samples & Google Map - Revolver Property – Lucky-South Block 1:20 000 .....	32
Figure 14: Samples, Geology & Geophysics (EM) - Revolver Property – Lucky-South Block 1:20 000 .....	34
Figure 15: Samples Results, Geology & Geophysics (EM) – Revolver Property – Lucky-South Block 1:20 000 .....	36
Figure 16: Targets Geol-Mag-EM-Gold-Faults - Revolver Property – Lucky-North Block 1:30 000 .....	38
Figure 17: Targets Geol-EM-Gold-Faults - Revolver Property – Lucky-North Block 1:30 000 .....	40
Figure 18: Targets Google-EM-Gold-Faults - Revolver Property – Lucky-North Block 1:30 000 .....	42
Figure 19: DDH-Geology-Showings - Revolver Property – Lucky-North & Lucky-South Blocks 1:20 000 .....	44
Table 1: Claims List of Revolver Property - Lucky North Block .....	46
Table 2: Claims List of Revolver Property - Lucky South Block .....	48
Table 3: Results Revolver Property - Lucky North .....	50
Table 4: Results Revolver Property - Lucky South .....	55
ANNEXE I: List of References and Descriptions .....	59
ANNEXE II: Certificates of ALS-Chemex .....	68

## Location and Description

The Revolver Property (Lucky-North & Lucky-South Blocks) reviewed in this assessment report is located in the Urban-Barry gold region. The Revolver Property is located 120 km east of Lebel-sur-Quevillon and 120 km southwest of Chibougamau, Abitibi, in the Lacroix Township (Figure 1 and 2). The property is accessible by a gravel road from the Barrette Company east of Chapais. The property is in the topographic map (NTS 32G/03).

March 2012

The Property consists of two contiguous blocks. The Lucky-North Block consists of 46 claims covering an area of 2576 hectares and the Lucky-South Block consists of 35 claims covering an area of 1960 hectares (figure 4 and tables 1 & 2).

### **Previous Works**

Just a few exploration works were completed on the property. Here are listed the most important ones:

1965: Southwest Potash Corporation: Completed an airborne survey (Mag/EM) as well as a geological survey.

1977: Shell Canada: Completed an airborne survey (Mag/EM), a geological survey and drilled two short holes for a total of 186 m only (see figure 19 and table of page 6).

No significant values.

1989: MRNQ: Completed an airborne survey (EM - INPUT MK-VI) – DP-83-03. (Figure 7)

1990: MRNQ: Mario Joly mapped the area at the scale of 1:50 000.

1997: Aur Resources: Executed an exploration program including an airborne survey (Mag/EM), a soil sampling survey (966 samples of humus & B-horizon) and prospecting and mapping.

EM anomalies (figure 7)

A few gold anomalies (up to 69 ppb) were detected in the humus and B-horizons. See the target zone A on figures 16-18.

*See Annexe I for the list of references and descriptions.*

## Geological Setting and Mineralization

The Revolver Property occurs within the Urban-Barry Greenstone Belt, an archean volcano-sedimentary sequence in the east-central portion of the North Volcanic Zone of the Abitibi Sub-Province (Joly 1990). The geology of the area is characterized by a thick overturned (metamorphosed) bimodal sequence comprising basaltic flows intercalated with felsic rhyolitic to mafic andesitic volcanoclastic pile (see figures 3, 6-7, 10-11 and 14-17). The volcanoclastic sequence is intruded by synvolcanic to late (post mineralization) intrusions. Rock units are deformed and metamorphosed to greenschists assemblages. The dominant structural fabric trends to the northeast with variable dips.

Gold mineralization found to date in the area occurs in basalts, rhyolite and the volcano-sedimentary sequence. There are two styles of gold mineralization: sulphide replacement (generally pyrite) either as disseminations and stockwork of sulphide-rich fractures and classical native gold in veins and quartz veins (Aur Resources, 1997). Showings and results from diamond drilling obtained are described in the following tables:

Showings and Descriptions				
Showing	Localisation	Host Rock	Eastern	Northern
<b>Affleurement KB-029</b>	Sample B31318, Affleurement BK-029 (GM 56322) located at 500 m the North of Lac Chanceux	Altered Pillow Basalt	469821	5434259
<b>Croix 3</b>	DDH MB-83-04 (GM 41498) Outside the Revolver Property 1,4 km South-east of Affleurement KB-029	Graphitic argillite mixed with siltstone, turbidite and rhyolite	471040	5433627

Showings and Descriptions (cont)				
Showing	Mineralization	Alteration	Grade	
<b>Affleurement KB-029</b>	Mineralisation composed of 5 to 6 % of chalcopyrite and of 5 % finely disseminated pyrite	Sericitic, Ankeritic	<b>Cu 17052 ppm Ag 13, 6 ppm</b>	
<b>Croix 3</b>	Mineralisation composed of pyrite, pyrrhotite et sphalerite (up to 15%)		<b>Au 4600 ppb Ag 5,15 ppm</b>	

March 2012

<b>Diamond Drill Holes on Revolver Property</b>								
DDH #	Report	Cie	Year	Eastern	Northern	Azimet	Lenght	Au/Ag Values
<b>MB-83-03</b>	GM 41250	MINES CAMCHIB INC	1984	472129	5434553	360	32	
<b>MB-83-05</b>	GM 41250	MINES CAMCHIB INC	1983	471398	5434368	358	9	
<b>1</b>	GM 16784	SOUTHWEST POTASH CORP	1965	474055	5433179	180	11	
<b>2</b>	GM 16784	SOUTHWEST POTASH CORP	1965	474055	5433189	180	11	
<b>LA-03-04</b>	GM 60914	JEAN DESCARREAUX ET ASSOCIES LIMITEE	2003	474033	5433206	360	36	
<b>LA-03-03</b>	GM 60914	JEAN DESCARREAUX ET ASSOCIES LIMITEE	2003	474090	5433318	180	120	
<b>MB-84-18</b>	GM 41498	MINES CAMCHIB INC	1984	471295	5434359	357	33	
<b>MB-84-19</b>	GM 41498	MINES CAMCHIB INC	1984	471450	5434368	360	21	<b>1,71g/tAg/2,1</b>
<b>MB-84-20</b>	GM 41498	MINES CAMCHIB INC	1984	471401	5434316	360	32	

<b>Diamond Drill Holes on Croix 3 Showing</b>								
DDH #	Report	Cie	Year	Eastern	Northern	Azimet	Lenght	Au/Ag Values
<b>MB-83-01</b>	GM 41250	MINES CAMCHIB INC	1984	474026	5432396	360	6	
<b>MB-83-02</b>	GM 41250	MINES CAMCHIB INC	1984	473869	5432868	320	23	
<b>MB-83-04</b>	GM 41250	MINES CAMCHIB INC	1984	471002	5433624	360	26	<b>4,6g/tAu/2,1</b>
<b>LA-03-02</b>	GM 60914	JEAN DESCARREAUX ET ASSOCIES LIMITEE	2003	474220	5432692	315	12	
<b>MB-84-15</b>	GM 41498	MINES CAMCHIB INC	1984	471098	5433603	360	8	
<b>MB-84-16</b>	GM 41498	MINES CAMCHIB INC	1984	470895	5433628	360	9	<b>4,11g/tAg/2,1</b>
<b>MB-84-17</b>	GM 41498	MINES CAMCHIB INC	1984	470995	5433586	360	13	<b>3,83g/tAg/1,4</b>

March 2012

## Results of 2011 and Recommendations

The main purpose of the 2011 field reconnaissance, which covered 81 permits, was done to increase the gold potential of the area. A total of 173 samples were collected on the Lucky-North Block (LN-B) and 119 samples on the Lucky-South Block (LS-B) (samples location on figures 8 and 9). All samples were sent to the Lab ALS-Chemex in Val d'Or and assayed for Gold (code Au-AA23). In October and November of 2011 the team of Mike Lavoie Exploration used existing gravel roads (see Google maps of figures 5, 9, 13 and 18). The lack of outcrop permitted to collect just a few samples in place (samples # 3322, 3330 and 3333 in LN-B and samples # 3403-3405 and 3418 in LS-B). No significant mineralized zones were discovered (results on figures 10 and 11 and tables 3 and 4) and no positive results were collected from the beep mat survey.

The author is of the opinion that, because of the lack of outcrop, more soils samples should be collected (A & B horizons) on targets A and B described in figures 16, 17 and 18 from Aur Resources. In the same figures are located other targets from the author that are associated with EM conductors. Following this survey further prospecting, mapping, trenching and drilling should be done on soil anomalies to determine the full mineral potential of the Revolver Property. All samples should be assayed for all elements.



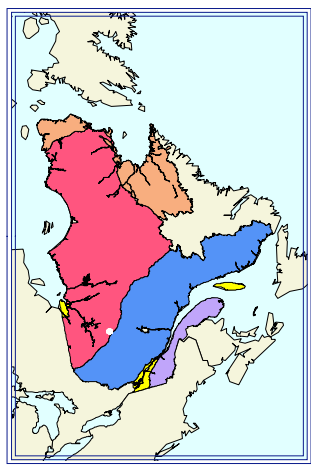
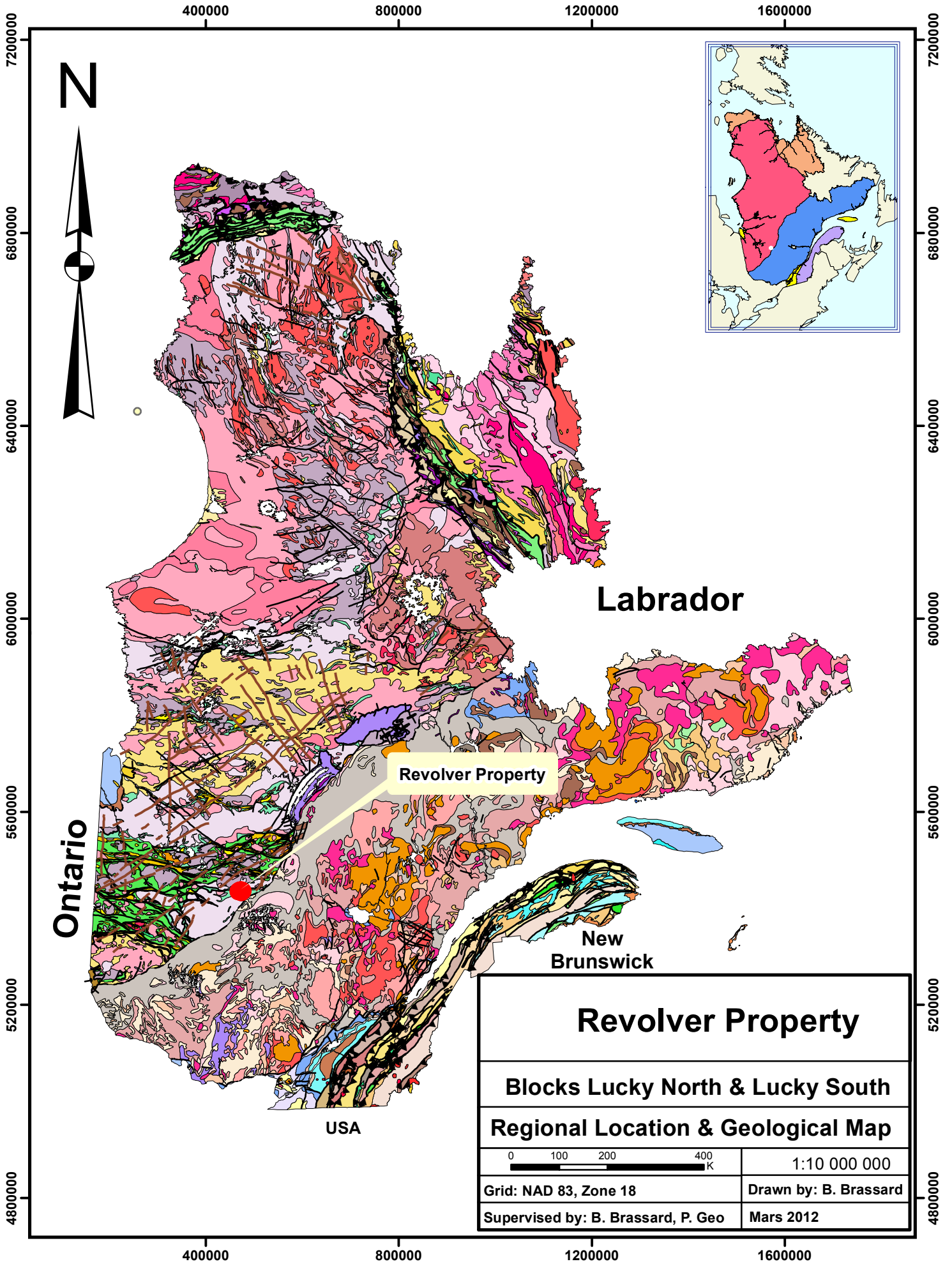
---

Bertrand Brassard, P.Geo., M.Sc.  
(OGQ # 1067)

March 2012

## **Figure 1**

### **Location Map - Revolver Property (Lucky-North & Lucky-South Blocks) 1:10 000 000**



**Labrador**

**Ontario**

**New Brunswick**

**USA**

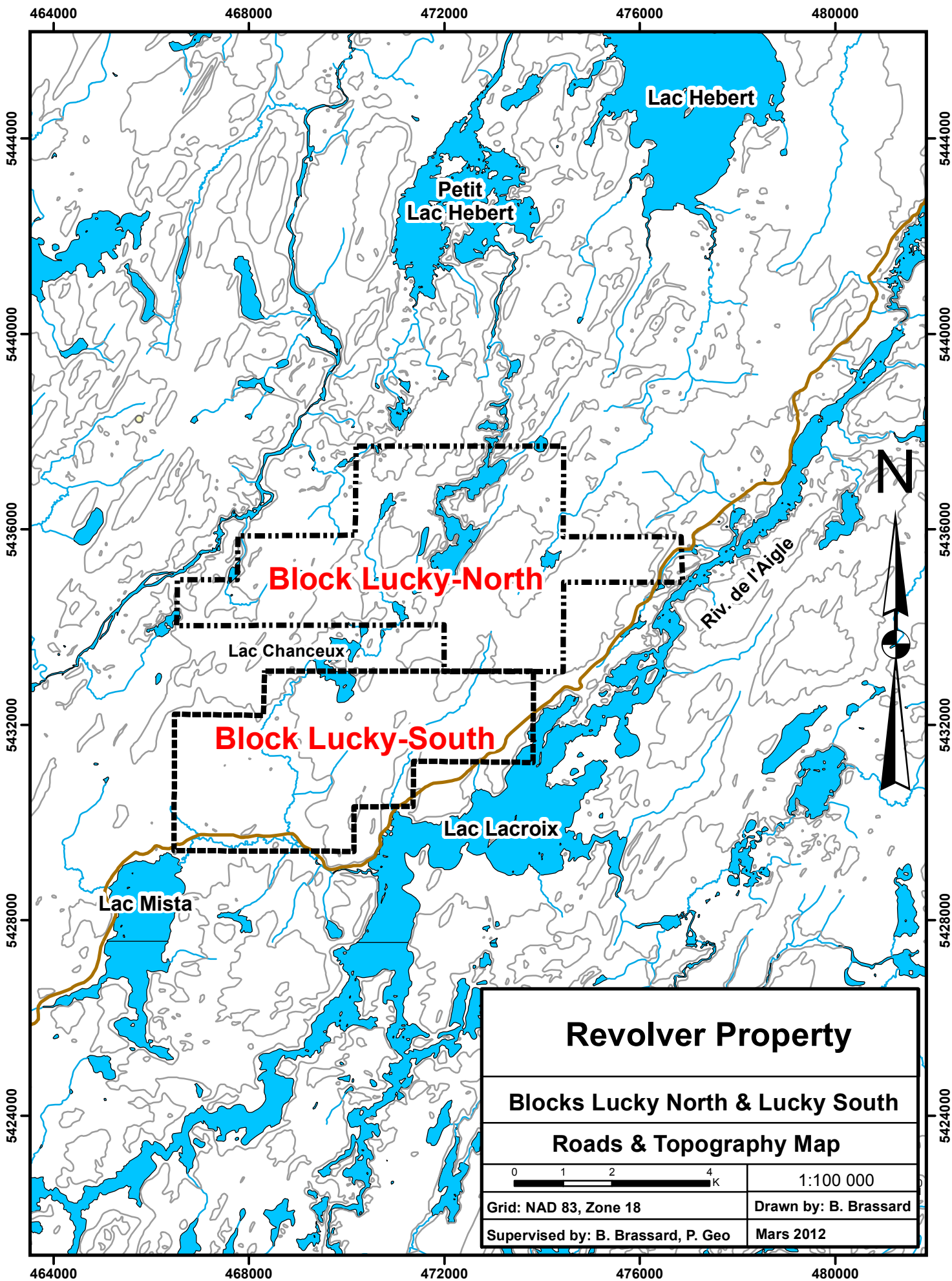
**Revolver Property**

<b>Revolver Property</b>	
<b>Blocks Lucky North &amp; Lucky South</b>	
<b>Regional Location &amp; Geological Map</b>	
	1:10 000 000
Grid: NAD 83, Zone 18	Drawn by: B. Brassard
Supervised by: B. Brassard, P. Geo	Mars 2012

March 2012

## **Figure 2**

### **Roads & Topographic Map - Revolver Property (Lucky-North & Lucky-South Blocks) 1:100 000**



464000

468000

472000

476000

480000

5444000

5440000

5436000

5432000

5428000

5424000

5444000

5440000

5436000

5432000

5428000

5424000

464000

468000

472000

476000

480000

Lac Hebert

Petit  
Lac Hebert

Block Lucky-North

Lac Chanceux

Block Lucky-South

Lac Lacroix

Lac Mista

Riv. de l'Aigle

N

**Revolver Property**

**Blocks Lucky North & Lucky South**

**Roads & Topography Map**

0 1 2 4 K

1:100 000

Grid: NAD 83, Zone 18

Drawn by: B. Brassard

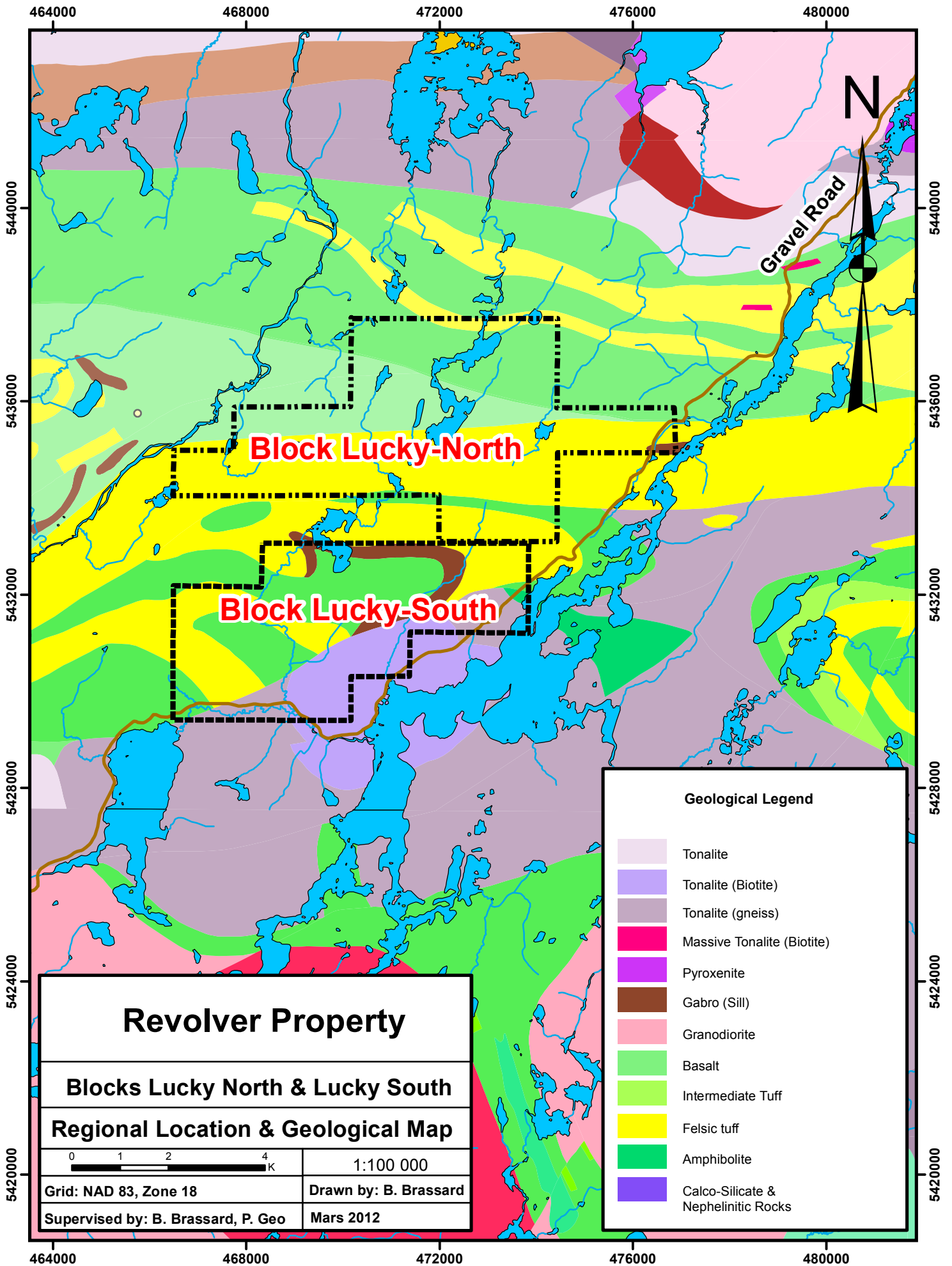
Supervised by: B. Brassard, P. Geo

Mars 2012

March 2012

## **Figure 3**

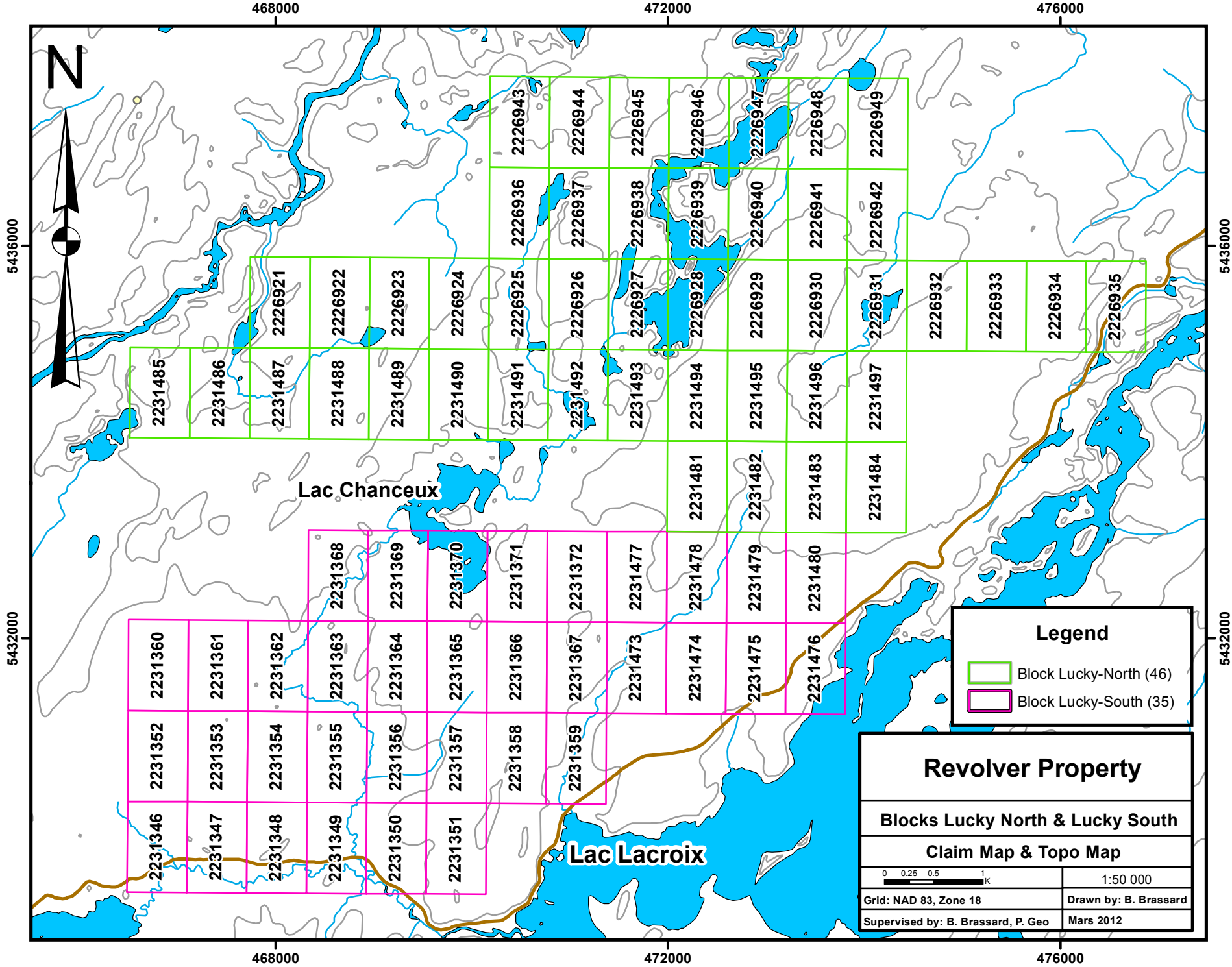
### **Geological regional Map - Revolver Property (Lucky-North & Lucky-South Blocks) 1:100 000**



March 2012

## **Figure 4**

### **Claim Map & Topography - Revolver Property (Lucky-North & Lucky-South Blocks) 1:50 000**



Lac Chanceux

Lac Lacroix

**Legend**

- Block Lucky-North (46)
- Block Lucky-South (35)

**Revolver Property**

Blocks Lucky North & Lucky South

Claim Map & Topo Map

0 0.25 0.5 1 k

1:50 000

Grid: NAD 83, Zone 18      Drawn by: B. Brassard

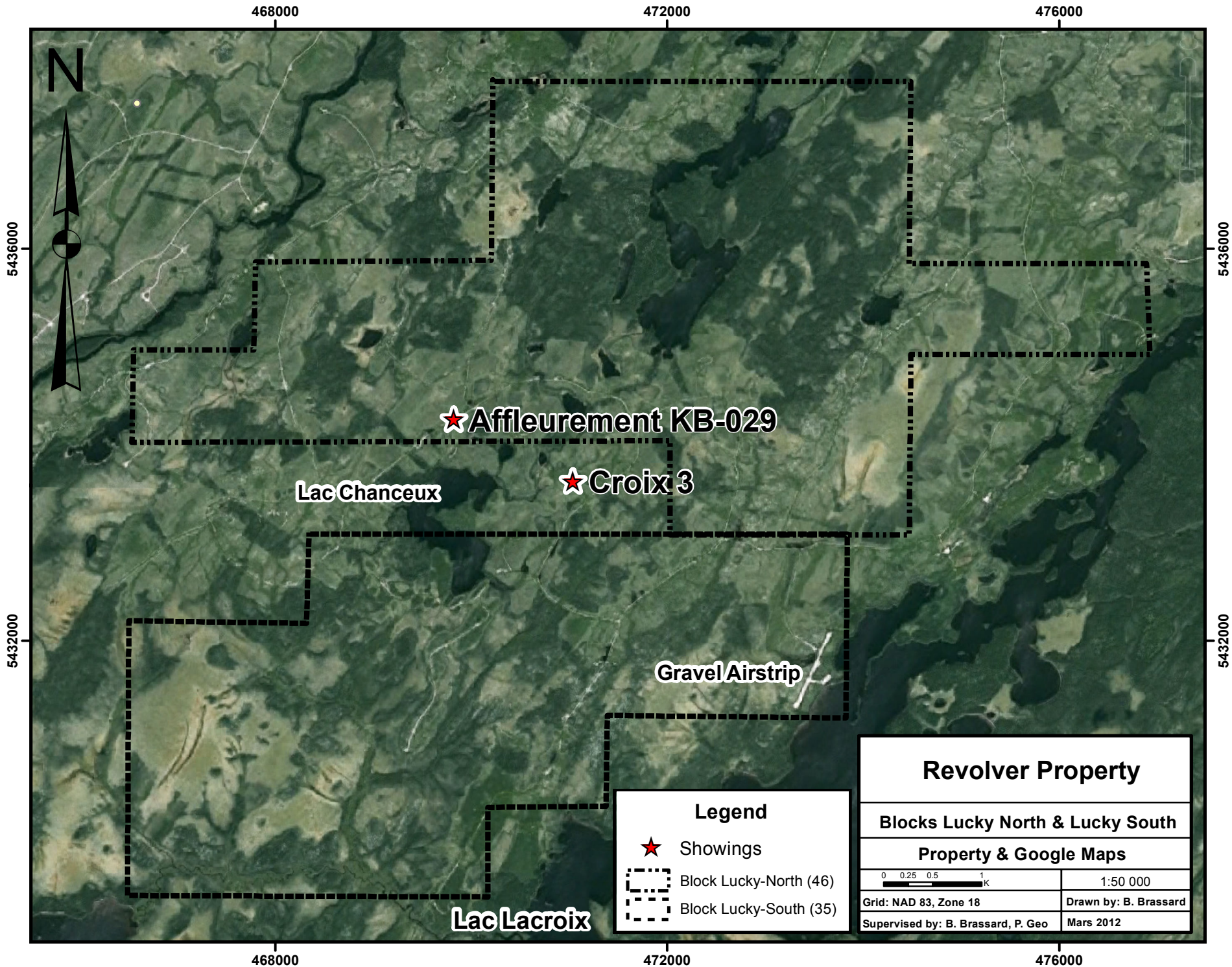
Supervised by: B. Brassard, P. Geo      Mars 2012

2231485	2231486	2231487	2226921	2226922	2226923	2226924	2226925	2226936	2226943	2226944	2226945	2226946	2226947	2226948	2226949
2231488	2231489	2231490	2231491	2226926	2226927	2226928	2226938	2226939	2226940	2226941	2226942	2226932	2226933	2226934	2226935
2231481	2231482	2231483	2231484	2231492	2231493	2231494	2231495	2231496	2231497	2226937	2226938	2226939	2226940	2226941	2226942
2231360	2231361	2231362	2231363	2231364	2231365	2231366	2231367	2231372	2231371	2231372	2231377	2231378	2231379	2231380	2231381
2231352	2231353	2231354	2231355	2231356	2231357	2231358	2231359	2231473	2231474	2231475	2231476	2231478	2231479	2231480	2231481
2231346	2231347	2231348	2231349	2231350	2231351	2231352	2231353	2231473	2231474	2231475	2231476	2231478	2231479	2231480	2231481

March 2012

## **Figure 5**

### **Google Map & Access - Revolver Property (Lucky-North & Lucky-South Blocks) 1:50 000**



468000

472000

476000

5436000

5436000

5432000

5432000

468000

472000

476000



★ Affleurement KB-029

Lac Chanceux

★ Croix 3

Gravel/Airstrip

Lac Lacroix

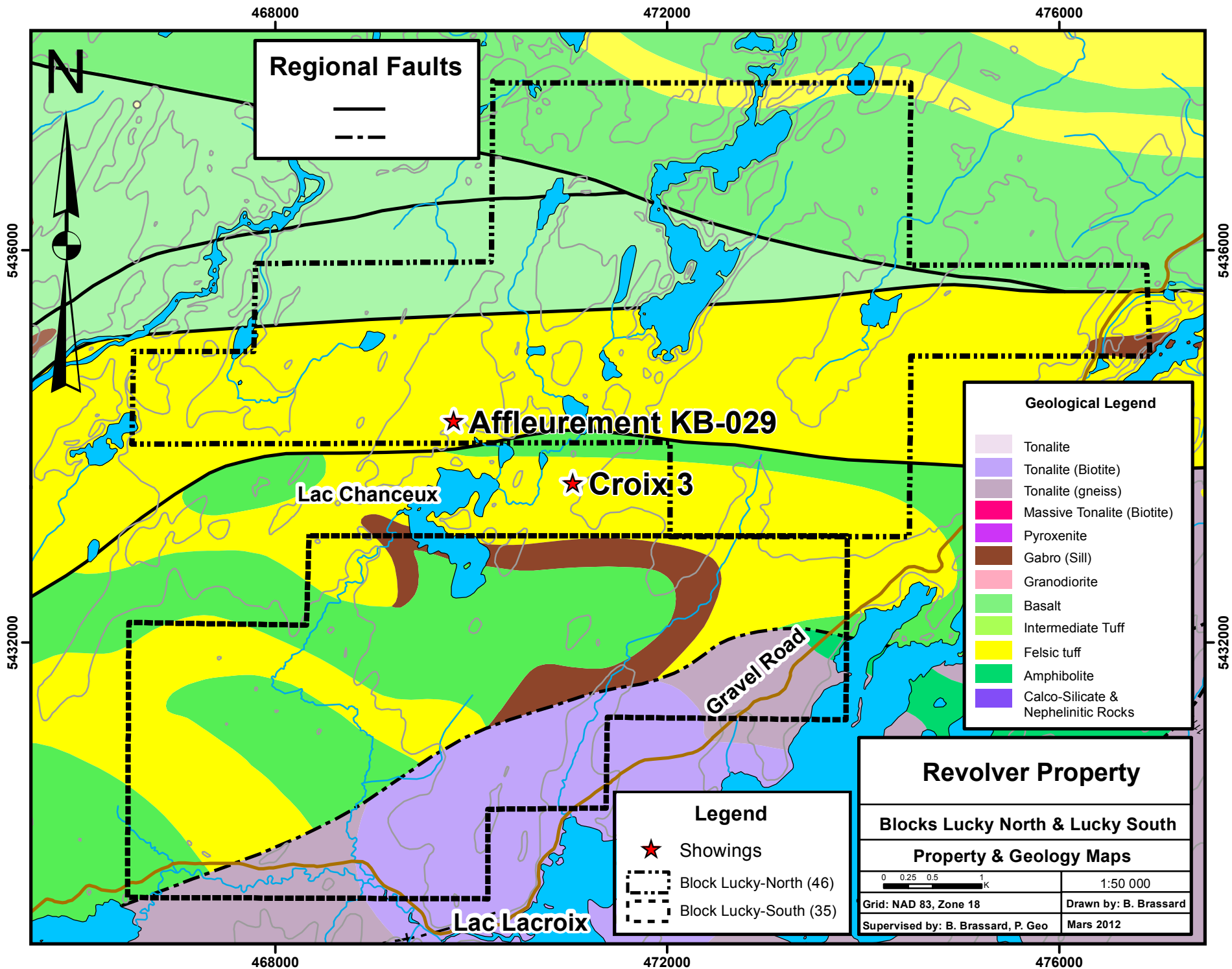
**Legend**

- ★ Showings
- Block Lucky-North (46)
- Block Lucky-South (35)

March 2012

## **Figure 6**

### **Geological Map & Showings - Revolver Property (Lucky-North & Lucky-South Blocks) 1:50 000**



**Regional Faults**

—  
- - -

**Geological Legend**

- Tonalite
- Tonalite (Biotite)
- Tonalite (gneiss)
- Massive Tonalite (Biotite)
- Pyroxenite
- Gabro (Sill)
- Granodiorite
- Basalt
- Intermediate Tuff
- Felsic tuff
- Amphibolite
- Calco-Silicate & Nephelinitic Rocks

**Legend**

- ★ Showings
- - - Block Lucky-North (46)
- - - Block Lucky-South (35)

**Revolver Property**

Blocks Lucky North & Lucky South

Property & Geology Maps

0 0.25 0.5 1 k  
1:50 000

Grid: NAD 83, Zone 18  
Supervised by: B. Brassard, P. Geo

Drawn by: B. Brassard  
Mars 2012

468000

472000

476000

5436000

5436000

5432000

5432000

468000

472000

476000

**Regional Faults**

★ **Affleurement KB-029**

★ **Croix 3**

Lac Chanceux

Lac Lacroix

Gravel Road

**Revolver Property**

Blocks Lucky North & Lucky South

Property & Geology Maps

0 0.25 0.5 1 k

1:50 000

Grid: NAD 83, Zone 18

Drawn by: B. Brassard

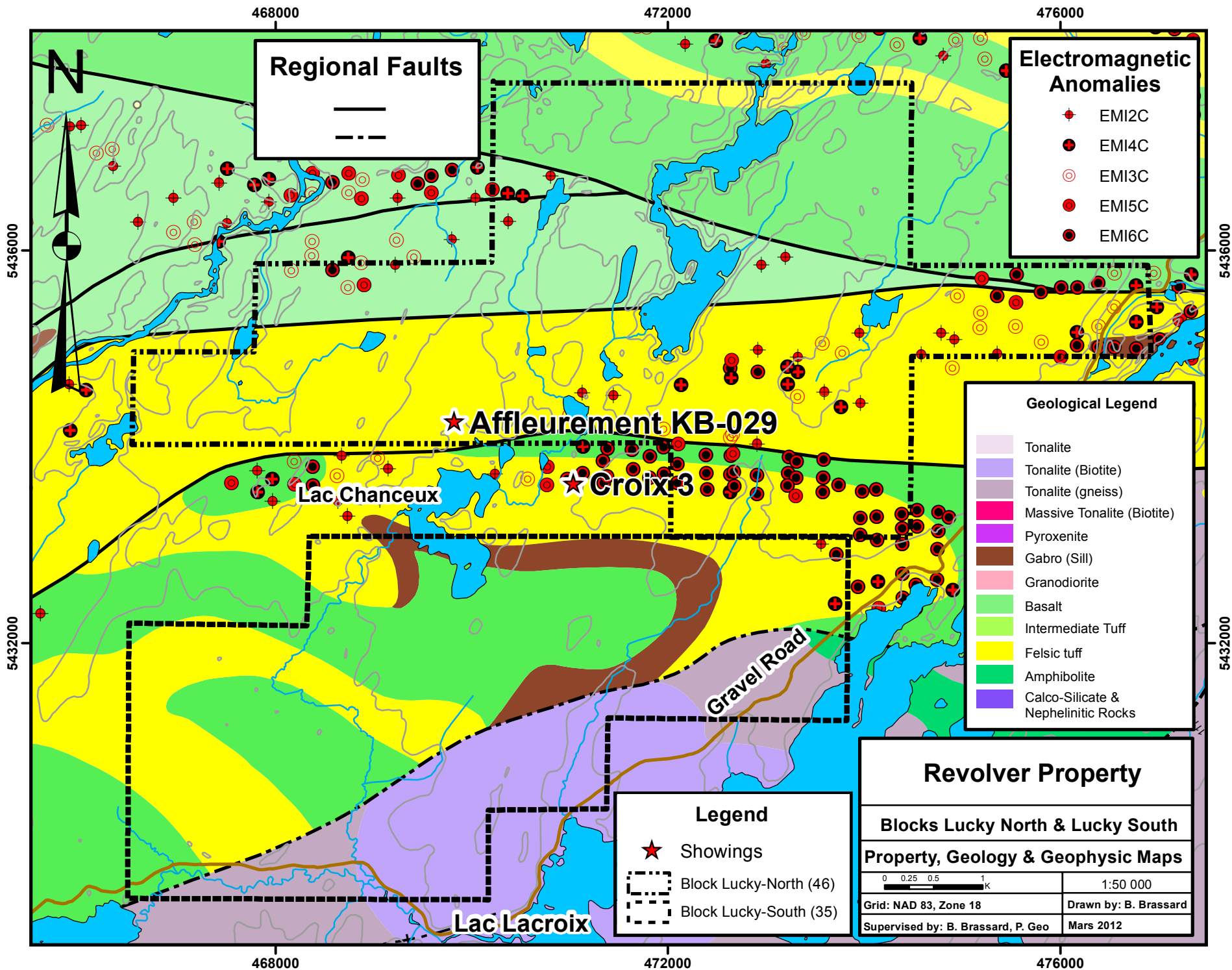
Supervised by: B. Brassard, P. Geo

Mars 2012

March 2012

## **Figure 7**

### **Geological & Geophysical Map (EM) - Revolver Property (Lucky-North & Lucky-South Blocks) 1:50 000**



March 2012

## **Figure 8**

### **Samples & Claims Numbers Revolver Property - Lucky-North Block 1:20 000**

468000

472000

N



5436000

5436000

3279 3280  
3277 3278

2226921

2226922

2226923

2226924

2226925

2226926

2226927

2226928

2226929

2226930

2226931

2226932

3294 3295  
3292 3293

2231486

2231487

2231488

2231489

2231490

2231491

2231492

2231493

2231494

2231495

2231496

2231497

3306 3307  
3304 3305

3336 3337  
3334 3335

3345 3346  
3344 3344

3350 3351  
3348 3349

3360 3361  
3358 3359

3367 3368  
3365 3366

3374 3375  
3372 3373

3267 3268  
3265 3266

3355 3356  
3353 3354

3258 3259  
3256 3257

3219 3220  
3217 3218

3251 3252  
3249 3250

3230 3231  
3228 3229

Lac Chanceux

Affleurement KB-029

★ Croix 3



Showings

468000

472000

Revolver Property

Blocks Lucky North

Samples Location

0 0.050.1 0.2  
K

1:20 000

Grid: NAD 83, Zone 18

Drawn by: B. Brassard

Supervised by: B. Brassard, P. Geo

Mars 2012

March 2012

## **Figure 9**

### **Samples & Google Map Revolver Property - Lucky-North Block 1:20 000**

468000

472000

N



5436000

5436000

3279 3280  
3277 3278

3267 3268  
3265 3266

3258 3259  
3256 3257

3230 3231  
3228 3229

3219 3220  
3217 3218

3355 3356  
3353 3354

3251 3252  
3249 3250

3350 3351  
3348 3349

3360 3361  
3358 3359

3294 3295  
3292 3293

3345 3346  
3344 3344

3367 3368  
3365 3366

3374 3375  
3372 3373

3306 3307  
3304 3305

3336 3337  
3334 3335

Affleurement KB-029

Lac Chanceux

★ Croix 3

3379 3380  
3377 3378

★ Showings

Revolver Property

Blocks Lucky North

Samples Location & Google map

0 0.050.1 0.2  
K

1:20 000

Grid: NAD 83, Zone 18

Drawn by: B. Brassard

Supervised by: B. Brassard, P. Geo

Mars 2012

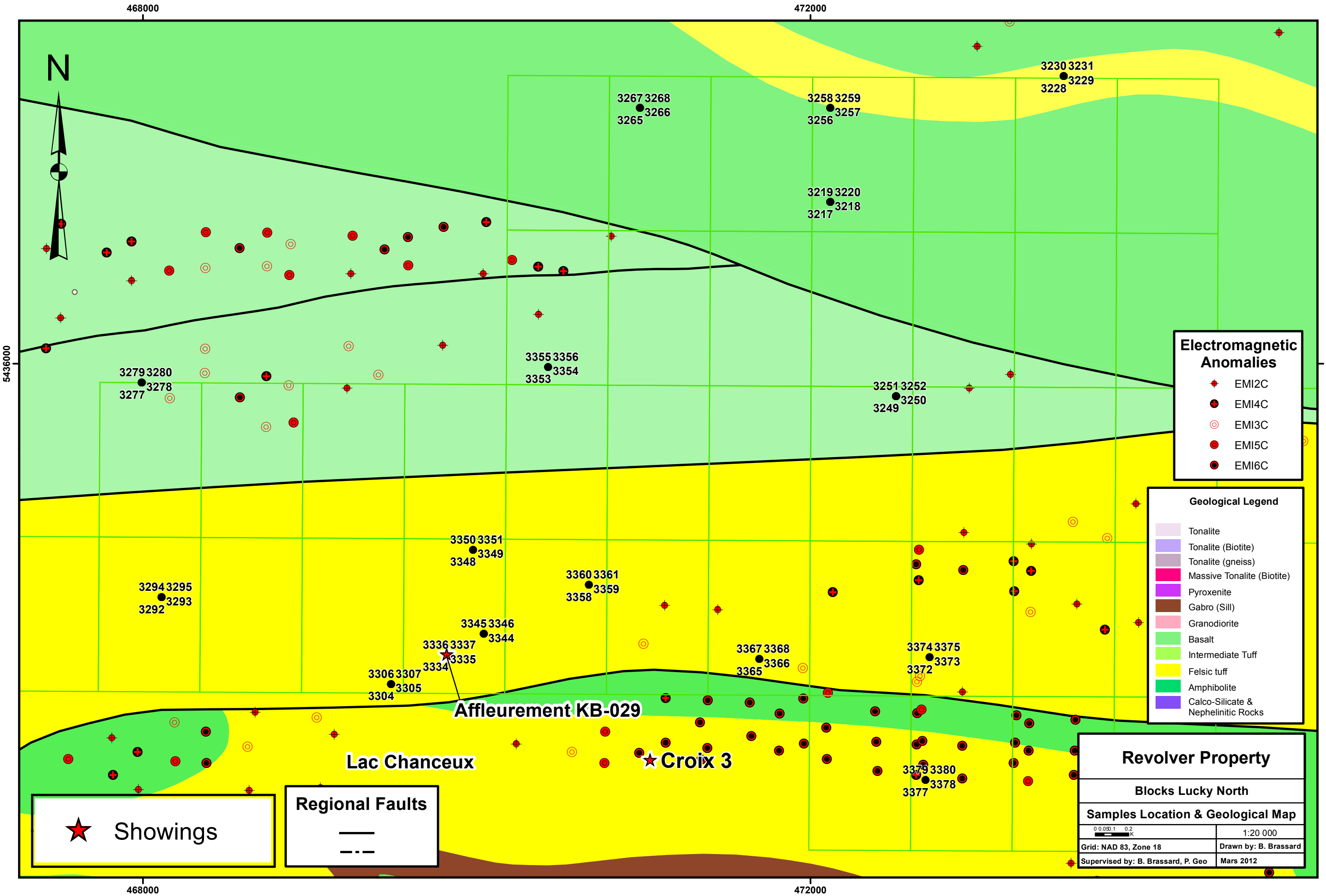
468000

472000

March 2012

## **Figure 10**

### **Samples, Geology & Geophysics (EM) Revolver Property - Lucky-North Block 1:20 000**



### Electromagnetic Anomalies

- EMI2C
- EMI4C
- EMI3C
- EMI5C
- EMI6C

### Geological Legend

- Tonalite
- Tonalite (Biotite)
- Tonalite (gneiss)
- Massive Tonalite (Biotite)
- Pyroxenite
- Gabro (Sill)
- Granodiorite
- Basalt
- Intermediate Tuff
- Felsic tuff
- Amphibolite
- Calco-Silicate & Nephelinitic Rocks

★ Showings

### Regional Faults

—

- - -

### Revolver Property

Blocks Lucky North

#### Samples Location & Geological Map

0 0.050.1 0.2 K

1:20 000

Grid: NAD 83, Zone 18

Supervised by: B. Brassard, P. Geo

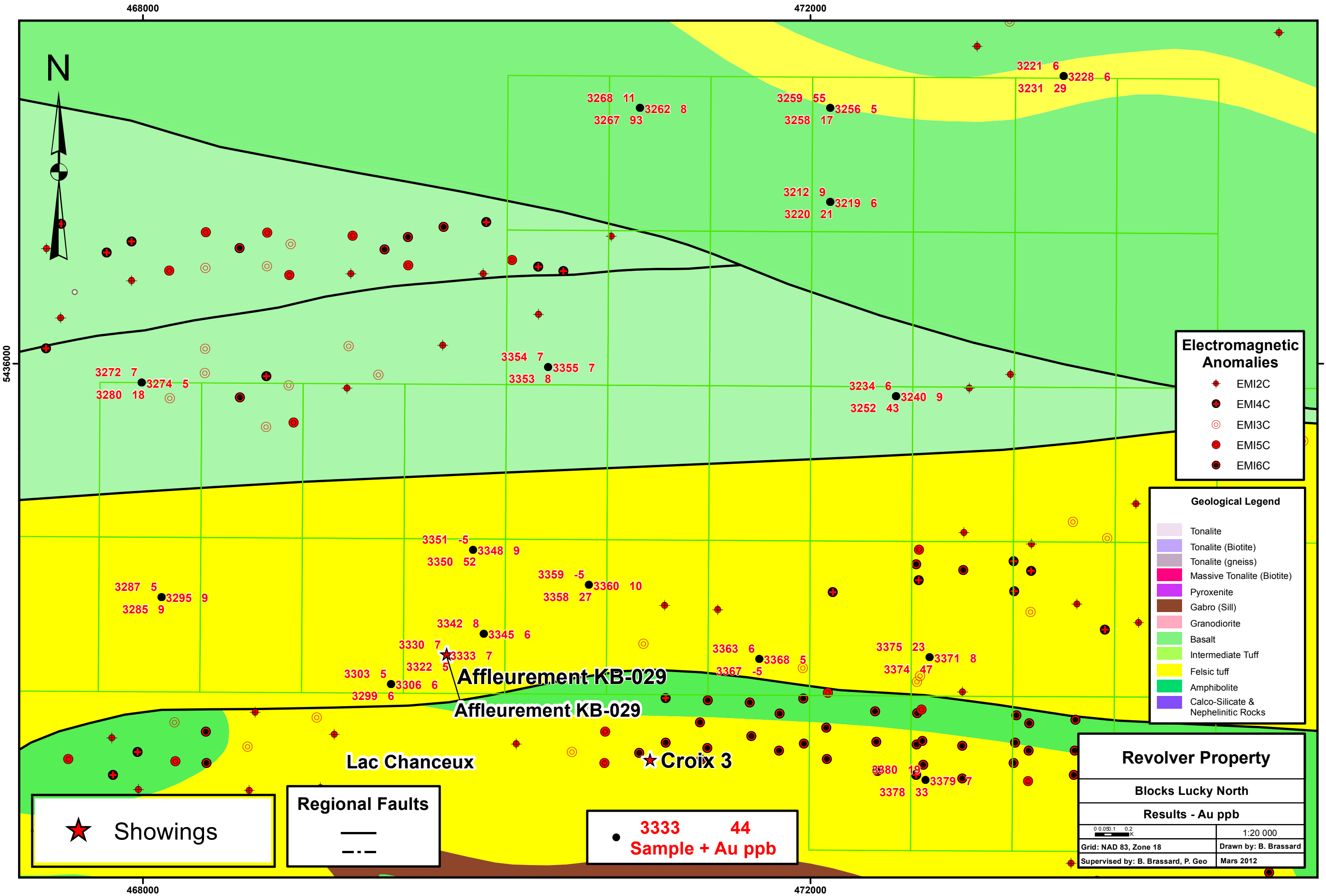
Drawn by: B. Brassard

Mars 2012

March 2012

## **Figure 11**

### **Samples Results, Geology & Geophysic (EM) Revolver Property - Lucky-North Block 1:20 000**



### Electromagnetic Anomalies

- ◆ EMI2C
- EMI4C
- EMI3C
- EMI5C
- EMI6C

### Geological Legend

- Tonalite
- Tonalite (Biotite)
- Tonalite (gneiss)
- Massive Tonalite (Biotite)
- Pyroxenite
- Gabro (Sill)
- Granodiorite
- Basalt
- Intermediate Tuff
- Felsic tuff
- Amphibolite
- Calco-Silicate & Nephelinitic Rocks

★ Showings

### Regional Faults

—

- - -

● 3333 44  
Sample + Au ppb

### Revolver Property

Blocks Lucky North

Results - Au ppb

0 0.050.1 0.2 K

1:20 000

Grid: NAD 83, Zone 18

Supervised by: B. Brassard, P. Geo

Drawn by: B. Brassard

Mars 2012

3272 7  
3280 18

3274 5

3354 7  
3353 8

3268 11  
3267 93

3262 8

3259 55  
3258 17

3256 5

3221 6  
3231 29

3228 6

3212 9  
3220 21

3219 6

3234 6  
3252 43

3240 9

3287 5  
3285 9

3295 9

3351 -5  
3350 52

3348 9

3359 -5  
3358 27

3360 10

3342 8  
3333 7

3345 6

3330 7

3322 5

3303 5

3306 6

3299 6

3363 6  
3367 -5

3368 5

3375 23  
3374 47

3371 8

3380 19  
3378 33

3379 7

Lac Chanceux

★ Croix 3

Affleurement KB-029

Affleurement KB-029

468000

472000

5436000

5436000

468000

472000

March 2012

## **Figure 12**

### **Samples & Claims Numbers Revolver Property - Lucky-South Block 1:20 000**

468000

472000

N

★ Croix 3

Lac Chanceux

3386 3387  
● 3385  
3384

3474 3475  
● 3473  
3472

2231369

2231370

3461 3462  
● 3460  
3459

3455 3456  
● 3454  
3453

2231372

2231477

3404 3405  
● 3403  
3402

2231478

2231479

2231480

3419 3420  
● 3418  
3417

5432000

2231360

2231361

2231362

2231363

2231364

2231365

2231366

2231367

2231473

2231474

2231475

2231476

3395 3396  
● 3394  
3393

3481 3482  
● 3480  
3479

2231364

2231365

2231366

2231367

3428 3429  
● 3427  
3426

Gravel Road

3487 3488  
● 3486  
3485

3493 3494  
● 3492  
3491

2231356

2231357

2231358

2231359

3437 3438  
● 3436  
3435

2231352

2231353

2231354

2231355

2231356

2231357

2231358

2231359

3499 3500  
● 3498  
3497

2231350

2231351

3443 3444  
● 3442  
3441

3448 3449  
● 3447  
3446

Lac Lacroix

5432000

★ Showings

Revolver Property

Blocks Lucky South

Samples Location

0 0.05 0.1 0.2  
K

1:20 000

Grid: NAD 83, Zone 18

Drawn by: B. Brassard

Supervised by: B. Brassard, P. Geo

Mars 2012

468000

472000

March 2012

## **Figure 13**

### **Samples & Google Map Revolver Property - Lucky-South Block 1:20 000**

468000

472000

N

Lac Chanceux

★ Croix 3

3474 3475  
● 3473  
3472

3467 3468  
● 3466  
3465

3461 3462  
● 3460  
3459

3455 3456  
● 3454  
3453

3404 3405  
● 3403  
3402

3419 3420  
● 3418  
3417

3386 3387  
● 3385  
3384

3481 3482  
● 3480  
3479

3428 3429  
● 3427  
3426

3395 3396  
● 3394  
3393

3487 3488  
● 3486  
3485

3493 3494  
● 3492  
3491

3437 3438  
● 3436  
3435

Gravel Road

3499 3500  
● 3498  
3497

3443 3444  
● 3442  
3441

Lac Lacroix

3448 3449  
● 3447  
3446

★ Showings

Revolver Property

Blocks Lucky South

Samples Location

0 0.05 0.1 0.2 K

1:20 000

Grid: NAD 83, Zone 18

Drawn by: B. Brassard

Supervised by: B. Brassard, P. Geo

Mars 2012

468000

472000

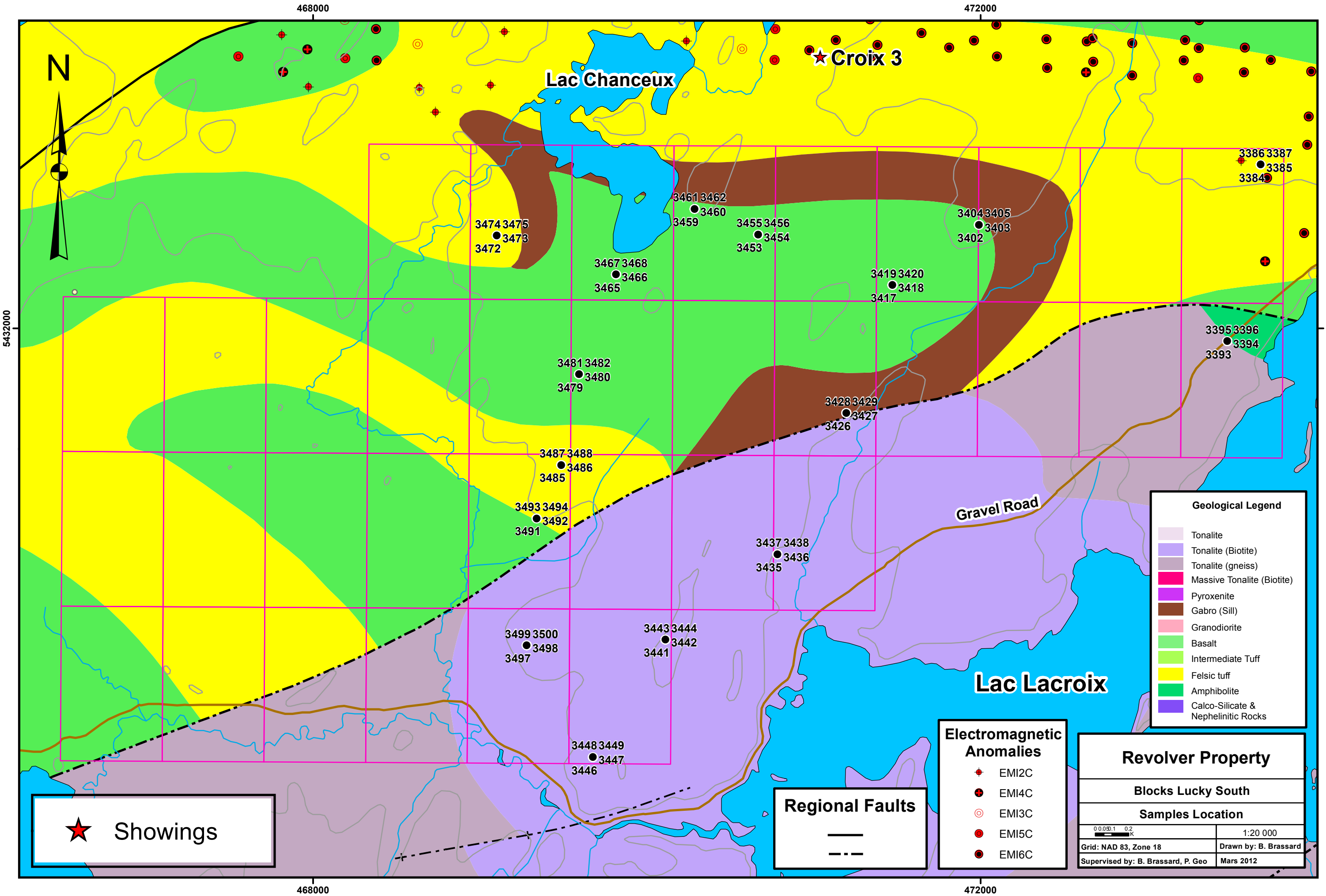
5432000

5432000

March 2012

## **Figure 14**

### **Samples, Geology & Geophysics (EM) Revolver Property - Lucky-South Block 1:20 000**



**Geological Legend**

- Tonalite
- Tonalite (Biotite)
- Tonalite (gneiss)
- Massive Tonalite (Biotite)
- Pyroxenite
- Gabro (Sill)
- Granodiorite
- Basalt
- Intermediate Tuff
- Felsic tuff
- Amphibolite
- Calco-Silicate & Nephelinitic Rocks

**Electromagnetic Anomalies**

- EMI2C
- EMI4C
- EMI3C
- EMI5C
- EMI6C

**Regional Faults**

- 
- - -

**Showings**

- ★

**Revolver Property**

**Blocks Lucky South**

**Samples Location**

0 0.05 0.1 0.2 K

1:20 000

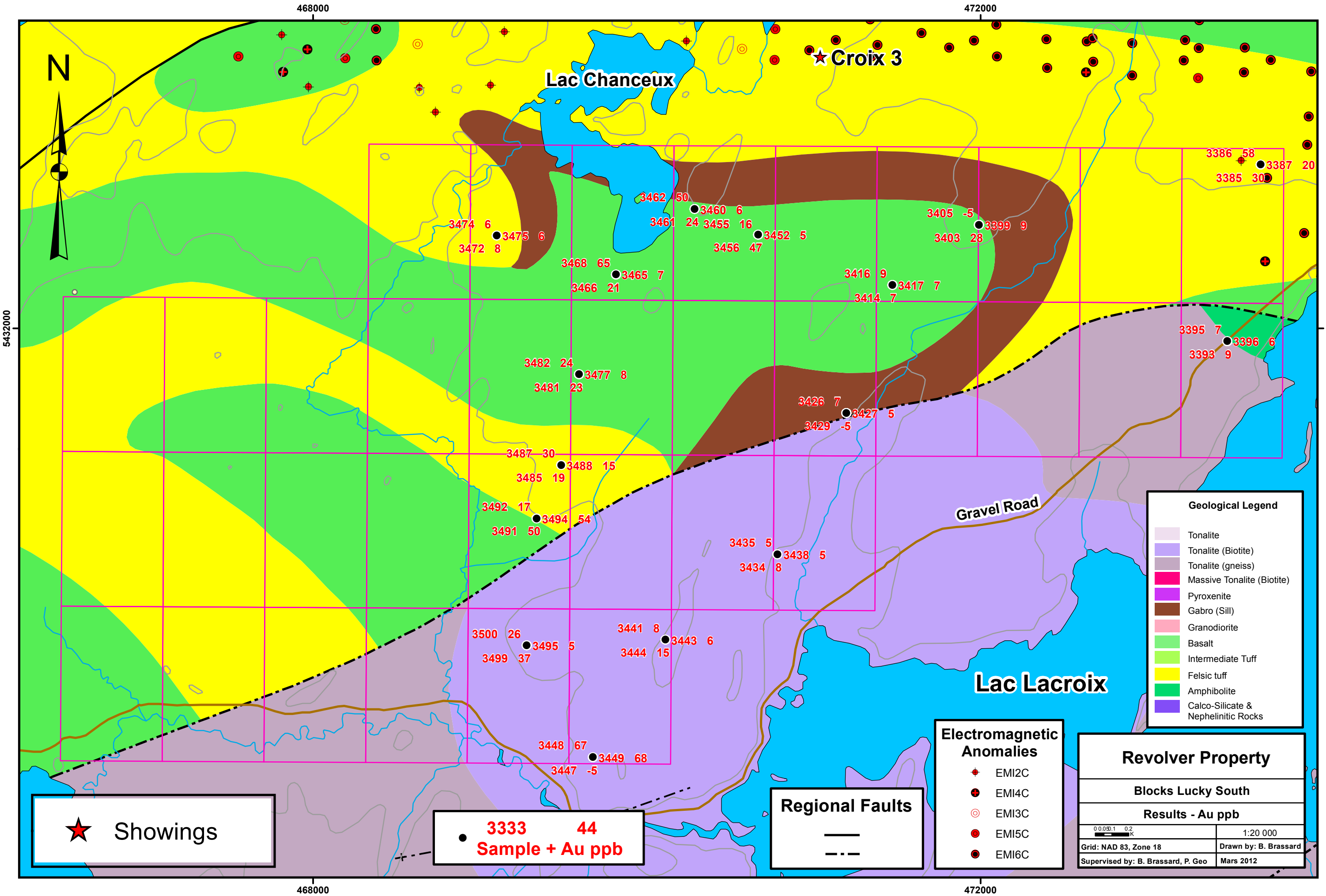
Grid: NAD 83, Zone 18      Drawn by: B. Brassard

Supervised by: B. Brassard, P. Geo      Mars 2012

March 2012

## **Figure 15**

### **Samples Results, Geology & Geophysic (EM) Revolver Property - Lucky-South Block 1:20 000**



**Geological Legend**

- Tonalite
- Tonalite (Biotite)
- Tonalite (gneiss)
- Massive Tonalite (Biotite)
- Pyroxenite
- Gabro (Sill)
- Granodiorite
- Basalt
- Intermediate Tuff
- Felsic tuff
- Amphibolite
- Calco-Silicate & Nephelinitic Rocks

**Electromagnetic Anomalies**

- EMI2C
- EMI4C
- EMI3C
- EMI5C
- EMI6C

**Regional Faults**

- 
- - -

**Sample + Au ppb**

- 3333 44

**Showings**

- ★

**Revolver Property**

Blocks Lucky South

Results - Au ppb

0 0.05 0.1 0.2 K

1:20 000

Grid: NAD 83, Zone 18

Supervised by: B. Brassard, P. Geo

Drawn by: B. Brassard

Mars 2012

March 2012

## **Figure 16**

**Targets Geol-Mag-EM-Gold-Faults  
Revolver Property - Lucky-North Block  
1:30 000**

468000

472000

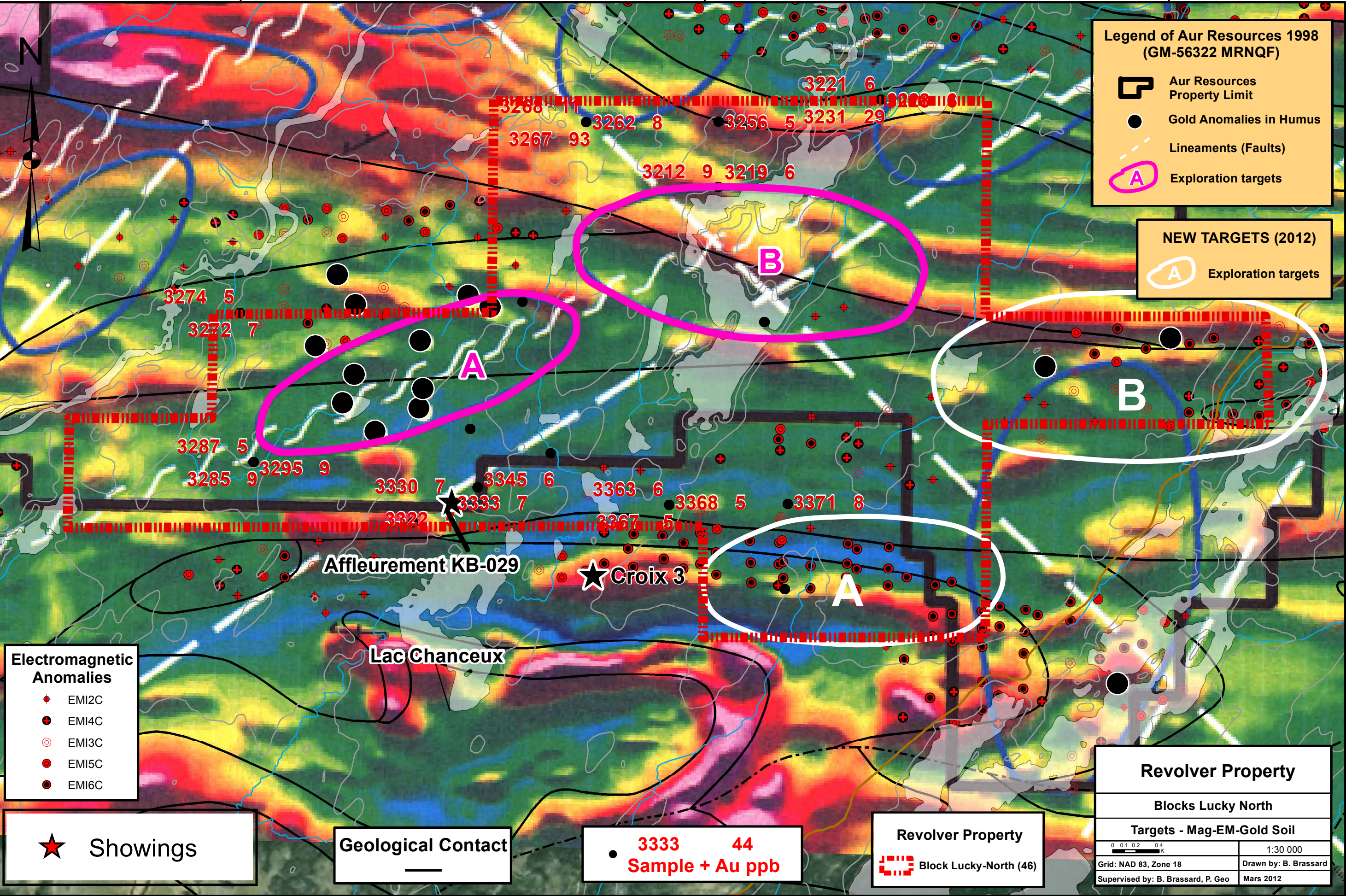
476000

**Legend of Aur Resources 1998 (GM-56322 MRNQF)**






-  Aur Resources Property Limit
-  Gold Anomalies in Humus
-  Lineaments (Faults)
-  Exploration targets


**NEW TARGETS (2012)**


-  Exploration targets





**Electromagnetic Anomalies**

-  EMI2C
-  EMI4C
-  EMI3C
-  EMI5C
-  EMI6C

 Showings

 Geological Contact

 **3333 44**  
Sample + Auppb

**Revolver Property**  
 Block Lucky-North (46)

**Revolver Property**

Blocks Lucky North

Targets - Mag-EM-Gold Soil

0 0.1 0.2 0.4  
k

1:30 000

Grid: NAD 83, Zone 18  
Supervised by: B. Brassard, P. Geo

Drawn by: B. Brassard  
Mars 2012

5436000

5436000

5432000

5432000

468000

472000

476000

March 2012

## **Figure 17**

### **Targets Geol-EM-Gold-Faults Revolver Property - Lucky-North Block 1:30 000**

468000

472000

476000

### Legend of Aur Resources 1998 (GM-56322 MRNQF)

- Aur Resources Property Limit
- Gold Anomalies in Humus
- Lineaments (Faults)
- Exploration targets

### NEW TARGETS (2012)

- Exploration targets

### Geological Legend

- Tonalite
- Tonalite (Biotite)
- Tonalite (gneiss)
- Massive Tonalite (Biotite)
- Pyroxenite
- Gabro (Sill)
- Granodiorite
- Basalt
- Intermediate Tuff
- Felsic tuff
- Amphibolite
- Calco-Silicate & Nephelinitic Rocks

### Revolver Property

**Blocks Lucky North**

**Targets - Geology-EM-Gold Soil**

0 0.1 0.2 0.4 k

1:30 000

Grid: NAD 83, Zone 18

Supervised by: B. Brassard, P. Geo

Drawn by: B. Brassard

Mars 2012



5436000

5436000

5432000

5432000

#### Electromagnetic Anomalies

- EMI2C
- EMI4C
- EMI3C
- EMI5C
- EMI6C

Showings

Geological Contact

**3333 44**  
Sample + Auppb

Revolver Property  
Block Lucky-North (46)

3274 5

3272 7

3287 5

3285 9

3295 9

3330 7

3322

3345 6

3363 6

3367 5

3368 5

3371 8

3268 11

3267 93

3212 9

3219 6

3221 6

3228 6

3256 5

3231 29

A

B

B

A

Affleurement KB-029

Croix 3

Lac Chanceux

468000

472000

476000

March 2012

## **Figure 18**

**Targets Google-EM-Gold-Faults  
Revolver Property - Lucky-North Block  
1:30 000**

468000

472000

476000

### Legend of Aur Resources 1998 (GM-56322 MRNQF)

- Aur Resources Property Limit
- Gold Anomalies in Humus
- Lineaments (Faults)
- Exploration targets

### NEW TARGETS (2012)

- Exploration targets



5436000

5436000

5432000

5432000

- #### Electromagnetic Anomalies
- EMI2C
  - EMI4C
  - EMI3C
  - EMI5C
  - EMI6C

Showings

Geological Contact

**3333 44**  
Sample + Auppb

Revolver Property  
 Block Lucky-North (46)

### Revolver Property

Blocks Lucky North

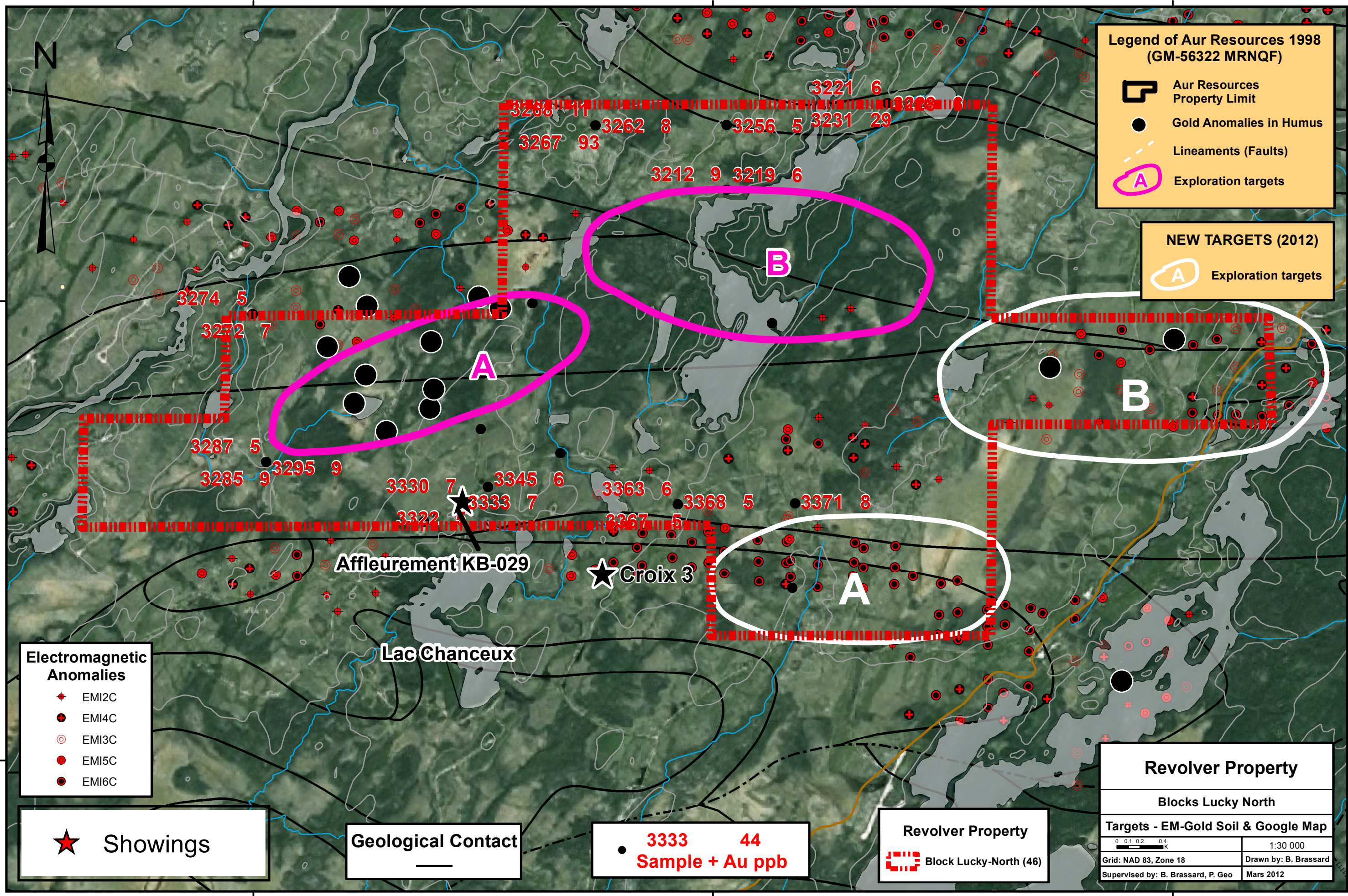
Targets - EM-Gold Soil & Google Map

0 0.1 0.2 0.4 km

1:30 000

Grid: NAD 83, Zone 18  
Supervised by: B. Brassard, P. Geo

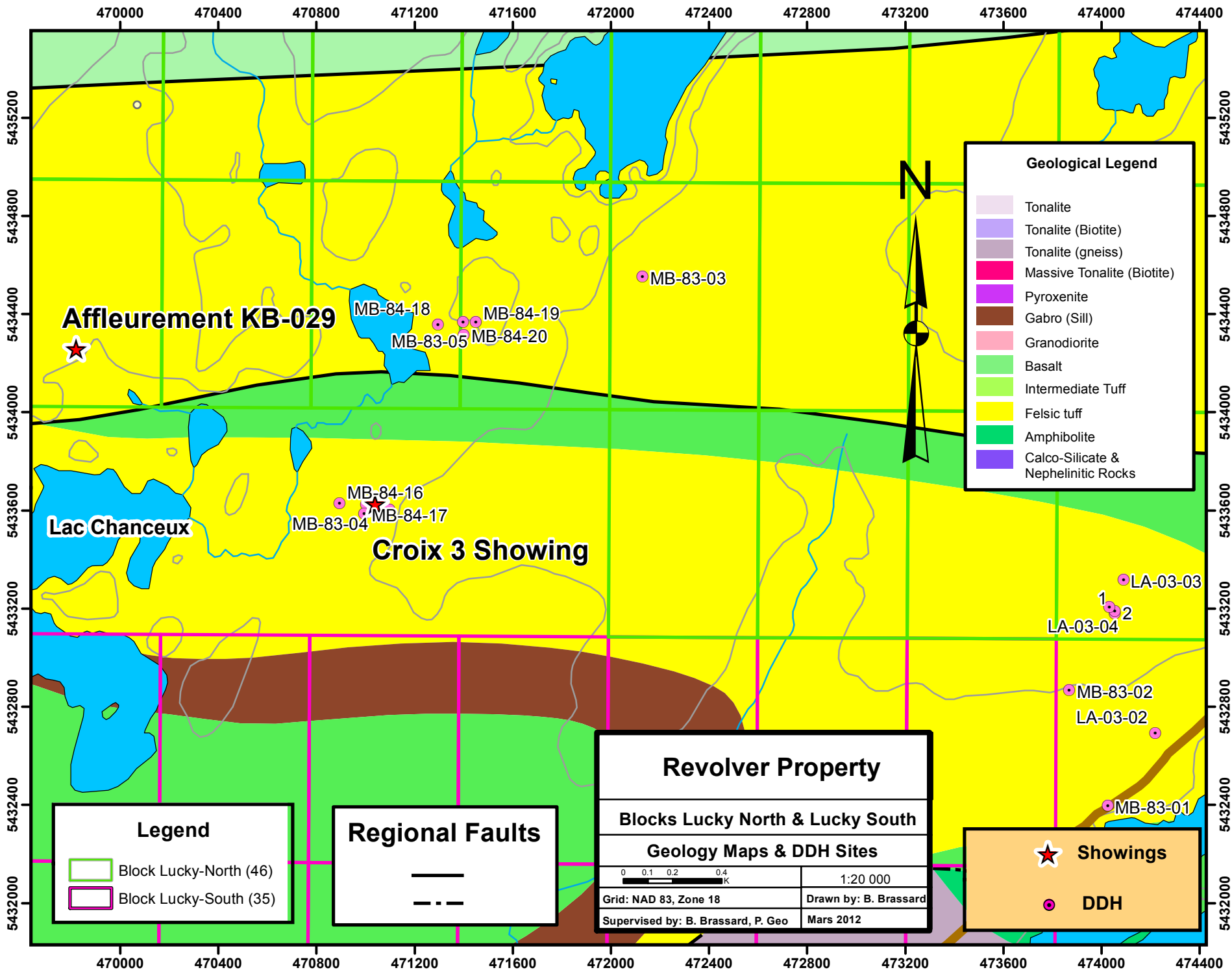
Drawn by: B. Brassard  
Mars 2012



March 2012

## **Figure 19**

### **DDH-Geology-Showings Revolver Property - Lucky-North & Lucky-South Blocks 1:20 000**



### Geological Legend

- Tonalite
- Tonalite (Biotite)
- Tonalite (gneiss)
- Massive Tonalite (Biotite)
- Pyroxenite
- Gabro (Sill)
- Granodiorite
- Basalt
- Intermediate Tuff
- Felsic tuff
- Amphibolite
- Calco-Silicate & Nephelinitic Rocks

### Legend

- Block Lucky-North (46)
- Block Lucky-South (35)

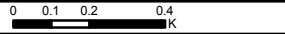
### Regional Faults

- 
- 

### Revolver Property

Blocks Lucky North & Lucky South

#### Geology Maps & DDH Sites

	1:20 000
Grid: NAD 83, Zone 18	Drawn by: B. Brassard
Supervised by: B. Brassard, P. Geo	Mars 2012

### Showings

- Showings
- DDH

## **Table 1**

### **Claims List of Revolver Property - Lucky North Block**

**List of Permits - Revolver Property / Lucky-North Block**

<b>Titles</b>	<b>NTS</b>	<b>Surface (Hect)</b>	<b>Expiration Date</b>	<b>Owner</b>
CDC 2231483	32G03	56	2012-05-06	North American Exploration Ltd
CDC 2231484	32G03	56	2012-05-06	North American Exploration Ltd
CDC 2231485	32G03	56	2012-05-06	North American Exploration Ltd
CDC 2231486	32G03	56	2012-05-06	North American Exploration Ltd
CDC 2231489	32G03	56	2012-05-06	North American Exploration Ltd
CDC 2231490	32G03	56	2012-05-06	North American Exploration Ltd
CDC 2231491	32G03	56	2012-05-06	North American Exploration Ltd
CDC 2231494	32G03	56	2012-05-06	North American Exploration Ltd
CDC 2231497	32G03	56	2012-05-06	North American Exploration Ltd
CDC 2226922	32G03	56	2012-05-03	Jeanne Lebel
CDC 2226923	32G03	56	2012-05-03	Jeanne Lebel
CDC 2226924	32G03	56	2012-05-03	Jeanne Lebel
CDC 2226926	32G03	56	2012-05-03	Jeanne Lebel
CDC 2226927	32G03	56	2012-05-03	Jeanne Lebel
CDC 2226928	32G03	56	2012-05-03	Jeanne Lebel
CDC 2226930	32G03	56	2012-05-03	Jeanne Lebel
CDC 2226932	32G03	56	2012-05-03	Jeanne Lebel
CDC 2226933	32G03	56	2012-05-03	Jeanne Lebel
CDC 2226934	32G03	56	2012-05-03	Jeanne Lebel
CDC 2226936	32G03	56	2012-05-03	Jeanne Lebel
CDC 2226937	32G03	56	2012-05-03	Jeanne Lebel
CDC 2226938	32G03	56	2012-05-03	Jeanne Lebel
CDC 2226939	32G03	56	2012-05-03	Jeanne Lebel
CDC 2226940	32G03	56	2012-05-03	Jeanne Lebel
CDC 2226941	32G03	56	2012-05-03	Jeanne Lebel
CDC 2226942	32G03	56	2012-05-03	Jeanne Lebel
CDC 2226943	32G03	56	2012-05-03	Jeanne Lebel
CDC 2226944	32G03	56	2012-05-03	Jeanne Lebel
CDC 2226945	32G03	56	2012-05-03	Jeanne Lebel
CDC 2226947	32G03	56	2012-05-03	Jeanne Lebel
CDC 2226948	32G03	56	2012-05-03	Jeanne Lebel
CDC 2226949	32G03	56	2012-05-03	Jeanne Lebel
CDC 2226935	32G03	56	2012-05-03	Jeanne Lebel
CDC 2231481	32G03	56	2012-05-06	North American Exploration Ltd
CDC 2231488	32G03	56	2012-05-06	North American Exploration Ltd
CDC 2231492	32G03	56	2012-05-06	North American Exploration Ltd
CDC 2231495	32G03	56	2012-05-06	North American Exploration Ltd
CDC 2226921	32G03	56	2012-05-03	Jeanne Lebel
CDC 2226925	32G03	56	2012-05-03	Jeanne Lebel
CDC 2226929	32G03	56	2012-05-03	Jeanne Lebel
CDC 2226931	32G03	56	2012-05-03	Jeanne Lebel
CDC 2226946	32G03	56	2012-05-03	Jeanne Lebel
CDC 2231482	32G03	56	2012-05-06	North American Exploration Ltd
CDC 2231487	32G03	56	2012-05-06	North American Exploration Ltd
CDC 2231493	32G03	56	2012-05-06	North American Exploration Ltd
CDC 2231496	32G03	56	2012-05-06	North American Exploration Ltd

## **Table 2**

### **Claims List of Revolver Property - Lucky South Block**

**List of Permits - Revolver Property / Lucky-South Block**

<b>Titles</b>	<b>NTS</b>	<b>Surface (Hect)</b>	<b>Expiration Date</b>	<b>Owner</b>
CDC 2231346	32G03	56	41035	Garnet Gold inc.
CDC 2231347	32G03	56	41035	Garnet Gold inc.
CDC 2231349	32G03	56	41035	Garnet Gold inc.
CDC 2231350	32G03	56	41035	Garnet Gold inc.
CDC 2231352	32G03	56	41035	Garnet Gold inc.
CDC 2231354	32G03	56	41035	Garnet Gold inc.
CDC 2231355	32G03	56	41035	Garnet Gold inc.
CDC 2231356	32G03	56	41035	Garnet Gold inc.
CDC 2231357	32G03	56	41035	Garnet Gold inc.
CDC 2231358	32G03	56	41035	Garnet Gold inc.
CDC 2231359	32G03	56	41035	Garnet Gold inc.
CDC 2231360	32G03	56	41035	Garnet Gold inc.
CDC 2231361	32G03	56	41035	Garnet Gold inc.
CDC 2231362	32G03	56	41035	Garnet Gold inc.
CDC 2231363	32G03	56	41035	Garnet Gold inc.
CDC 2231364	32G03	56	41035	Garnet Gold inc.
CDC 2231366	32G03	56	41035	Garnet Gold inc.
CDC 2231367	32G03	56	41035	Garnet Gold inc.
CDC 2231368	32G03	56	41035	Garnet Gold inc.
CDC 2231369	32G03	56	41035	Garnet Gold inc.
CDC 2231370	32G03	56	41035	Garnet Gold inc.
CDC 2231371	32G03	56	41035	Garnet Gold inc.
CDC 2231372	32G03	56	41035	Garnet Gold inc.
CDC 2231473	32G03	56	41035	North American Exploration Ltd
CDC 2231474	32G03	56	41035	North American Exploration Ltd
CDC 2231475	32G03	56	41035	North American Exploration Ltd
CDC 2231477	32G03	56	41035	North American Exploration Ltd
CDC 2231478	32G03	56	41035	North American Exploration Ltd
CDC 2231351	32G03	56	41035	Garnet Gold inc.
CDC 2231353	32G03	56	41035	Garnet Gold inc.
CDC 2231365	32G03	56	41035	Garnet Gold inc.
CDC 2231479	32G03	56	41035	North American Exploration Ltd
CDC 2231480	32G03	56	41035	North American Exploration Ltd
CDC 2231476	32G03	56	41035	North American Exploration Ltd
CDC 2231348	32G03	56	41035	Garnet Gold inc.

## **Table 3**

### **Results Revolver Property - Lucky North**

**Table of Results - Revolver Property / Lucky North Block**

<b>Sample</b>	<b>Eastern</b>	<b>Northern</b>	<b>Au ppb</b>	<b>Rock Type</b>	<b>Work Order - ALS</b>	<b>Lab Sample</b>
3206	472119	5436966	84	Volc Mafic	VO12043528	C03206
3207	472119	5436966	11	Volc Mafic	VO12043528	C03207
3208	472119	5436966	-5	?	VO12043528	C03208
3209	472119	5436966	18	?	VO12043528	C03209
3210	472119	5436966	196	Volc Felsic	VO12043528	C03210
3211	472119	5436966	44	Volc Felsic	VO12043528	C03211
3212	472119	5436966	9	Meta-Sediment	VO12043528	C03212
3213	472119	5436966	24	?	VO12043528	C03213
3214	472119	5436966	45	Meta-Sediment	VO12043528	C03214
3215	472119	5436966	67	Gabbro	VO12043528	C03215
3216	472119	5436966	15	Gabbro	VO12043528	C03216
3217	472119	5436966	-5	Gabbro Alt	VO12043528	C03217
3218	472119	5436966	48	Volc Mafic	VO12043528	C03218
3219	472119	5436966	6	?	VO12043528	C03219
3220	472119	5436966	21	?	VO12043528	C03220
3221	473518	5437721	6	Volc Felsic	VO12043528	C03221
3222	473518	5437721	47	Volc Felsic	VO12043528	C03222
3223	473518	5437721	216	Volc Felsic	VO12043528	C03223
3224	473518	5437721	-5	Meta-Sediment	VO12043528	C03224
3225	473518	5437721	26	?	VO12043528	C03225
3226	473518	5437721	172	Meta-Sediment	VO12043528	C03226
3227	473518	5437721	269	Gabbro	VO12043528	C03227
3228	473518	5437721	6	Gabbro Alt	VO12043528	C03228
3229	473518	5437721	13	Gabbro	VO12043528	C03229
3230	473518	5437721	73	Volc Mafic	VO12043528	C03230
3231	473518	5437721	29	?	VO12043528	C03231
3232	472514	5435805	17	?	VO12043528	C03232
3233	472514	5435805	26	?	VO12043528	C03233
3234	472514	5435805	6	Volc Felsic	VO12043528	C03234
3235	472514	5435805	11	Volc Felsic	VO12043528	C03235
3236	472514	5435805	34	Meta-Sediment	VO12043528	C03236
3237	472514	5435805	32	?	VO12043528	C03237
3238	472514	5435805	20	Meta-Sediment	VO12043528	C03238
3239	472514	5435805	134	Gabbro	VO12043528	C03239
3240	472514	5435805	9	Gabbro	VO12043528	C03240
3241	472514	5435805	221	Gabbro	VO12043528	C03241
3242	472514	5435805	40	Volc Mafic	VO12043528	C03242
3243	472514	5435805	35	?	VO12043528	C03243
3244	472514	5435805	22	?	VO12043528	C03244
3245	472514	5435805	10	Volc Felsic	VO12043528	C03245
3246	472514	5435805	64	Volc Felsic	VO12043528	C03246
3247	472514	5435805	109	Volc Felsic	VO12043528	C03247
3248	472514	5435805	209	Meta-Sediment	VO12043528	C03248
3249	472514	5435805	13	Meta-Sediment	VO12043528	C03249
3250	472514	5435805	77	Meta-Sediment	VO12043528	C03250

**Table of Results - Revolver Property / Lucky North Block**

<b>Sample</b>	<b>Eastern</b>	<b>Northern</b>	<b>Au ppb</b>	<b>Rock Type</b>	<b>Work Order - ALS</b>	<b>Lab Sample</b>
3251	472514	5435805	10	Gabbro Alt	VO12043528	C03251
3252	472514	5435805	43	Gabbro	VO12043528	C03252
3253	472119	5437530	-5	Gabbro	VO12043528	C03253
3254	472119	5437530	194	Volc Mafic	VO12043528	C03254
3255	472119	5437530	11	Volc Mafic	VO12043528	C03255
3256	472119	5437530	5	Gabbro Alt	VO12043528	C03256
3257	472119	5437530	26	Volc Felsic	VO12043528	C03257
3258	472119	5437530	17	Volc Felsic	VO12043528	C03258
3259	472119	5437530	55	Volc Felsic Alt	VO12043528	C03259
3260	470979	5437529	45	Gabbro Alt	VO12043528	C03260
3261	470979	5437529	49	Meta-Sediment	VO12043528	C03261
3262	470979	5437529	8	Meta-Sediment	VO12043528	C03262
3263	470979	5437529	62	Gabbro	VO12043528	C03263
3264	470979	5437529	11	Gabbro	VO12043528	C03264
3265	470979	5437529	23	Gabbro Alt	VO12043528	C03265
3266	470979	5437529	42	Volc Mafic	VO12043528	C03266
3267	470979	5437529	93	Volc Mafic High Alt	VO12043528	C03267
3268	470979	5437529	11	Volc Mafic High Alt	VO12043528	C03268
3269	467995	5435885	-5	Volc Felsic Alt	VO12043528	C03269
3270	467995	5435885	102	?	VO12043528	C03270
3271	467995	5435885	42	?	VO12043528	C03271
3272	467995	5435885	7	?	VO12043528	C03272
3273	467995	5435885	-5	Meta-Sediment	VO12043528	C03273
3274	467995	5435885	5	Meta-Sediment	VO12043528	C03274
3275	467995	5435885	13	Gabbro	VO12043528	C03275
3276	467995	5435885	17	Gabbro	VO12043528	C03276
3277	467995	5435885	69	Gabbro	VO12043528	C03277
3278	467995	5435885	80	Volc Mafic High Alt	VO12043528	C03278
3279	467995	5435885	10	Volc Mafic High Alt	VO12043528	C03279
3280	467995	5435885	18	?	VO12043528	C03280
3281	468112	5434599	28	?	VO12043528	C03281
3282	468112	5434599	5	Volc Felsic Alt	VO12043528	C03282
3283	468112	5434599	52	Volc Felsic Alt	VO12043528	C03283
3284	468112	5434599	17	Meta-Sediment	VO12043528	C03284
3285	468112	5434599	9	?	VO12043528	C03285
3286	468112	5434599	-5	Meta-Sediment	VO12043528	C03286
3287	468112	5434599	5	Gabbro	VO12043528	C03287
3288	468112	5434599	57	Gabbro	VO12043528	C03288
3289	468112	5434599	-5	Gabbro High alt	VO12043528	C03289
3290	468112	5434599	17	Volc Mafic High Alt	VO12043528	C03290
3292	468112	5434599	10	?	VO12043528	C03292
3293	468112	5434599	67	?	VO12043528	C03293
3294	468112	5434599	50	Volc Felsic Alt	VO12043528	C03294
3295	468112	5434599	9	Volc Felsic Alt	VO12043528	C03295
3296	469487	5434079	24	Volc Felsic Alt	VO12043528	C03296

**Table of Results - Revolver Property / Lucky North Block**

<b>Sample</b>	<b>Eastern</b>	<b>Northern</b>	<b>Au ppb</b>	<b>Rock Type</b>	<b>Work Order - ALS</b>	<b>Lab Sample</b>
3297	469487	5434079	-5	Meta-Sediment	VO12043528	C03297
3298	469487	5434079	14	?	VO12043528	C03298
3299	469487	5434079	6	Meta-Sediment	VO12043528	C03299
3300	469487	5434079	63	Gabbro High alt	VO12043528	C03300
3301	469487	5434079	-5	Gabbro High alt	VO12043528	C03301
3302	469487	5434079	76	Gabbro High alt	VO12043528	C03302
3303	469487	5434079	5	Volc Mafic High Alt	VO12043528	C03303
3304	469487	5434079	102	?	VO12043528	C03304
3305	469487	5434079	-5	?	VO12043528	C03305
3306	469487	5434079	6	?	VO12043528	C03306
3307	469487	5434079	55	Volc Felsic Alt	VO12043528	C03307
3308	469815	5434253	16	Volc Felsic Alt	VO12043528	C03308
3309	469815	5434253	59	Meta-Sediment	VO12043528	C03309
3310	469815	5434253	5	?	VO12043528	C03310
3311	469815	5434253	-5	Meta-Sediment	VO12043528	C03311
3312	469815	5434253	27	Gabbro Alt	VO12043528	C03312
3313	469815	5434253	-5	Gabbro High alt	VO12043528	C03313
3314	469815	5434253	-5	Gabbro High alt	VO12043528	C03314
3315	469815	5434253	-5	Volc Mafic High Alt	VO12043528	C03315
3316	469815	5434253	33	Volc Mafic High Alt	VO12043528	C03316
3317	469815	5434253	9	?	VO12043528	C03317
3318	469815	5434253	-5	?	VO12043528	C03318
3319	469815	5434253	24	Volc Felsic Alt	VO12043528	C03319
3320	469815	5434253	5	Volc Felsic Alt	VO12043528	C03320
3321	469815	5434253	10	Meta-Sediment	VO12043528	C03321
3322	469815	5434253	5	?	VO12043528	C03322
3323	469815	5434253	63	Meta-Sediment	VO12043528	C03323
3324	469815	5434253	140	Gabbro High alt	VO12043528	C03324
3325	469815	5434253	-5	?	VO12043528	C03325
3326	469815	5434253	-5	Gabbro	VO12043528	C03326
3327	469815	5434253	-5	Volc Mafic	VO12043528	C03327
3328	469815	5434253	23	?	VO12043528	C03328
3329	469815	5434253	16	?	VO12043528	C03329
3330	469815	5434253	7	?	VO12043528	C03330
3331	469815	5434253	-5	Volc Felsic Alt	VO12043528	C03331
3332	469815	5434253	-5	Volc Felsic Alt	VO12043528	C03332
3333	469815	5434253	7	Meta-Sediment	VO12043528	C03333
3334	469815	5434253	57	Meta-Sediment	VO12043528	C03334
3335	469815	5434253	-5	Meta-Sediment	VO12043528	C03335
3336	469815	5434253	-5	Gabbro	VO12043528	C03336
3337	469815	5434253	-5	Gabbro	VO12043528	C03337
3338	470043	5434380	11	Gabbro	VO12043528	C03338
3339	470043	5434380	12	Volc Mafic	VO12043528	C03339
3340	470043	5434380	11	Gabbro Alt	VO12043528	C03340
3341	470043	5434380	12	Gabbro Alt	VO12043528	C03341

**Table of Results - Revolver Property / Lucky North Block**

<b>Sample</b>	<b>Eastern</b>	<b>Northern</b>	<b>Au ppb</b>	<b>Rock Type</b>	<b>Work Order - ALS</b>	<b>Lab Sample</b>
3342	470043	5434380	8	Gabbro Alt	VO12043528	C03342
3343	470043	5434380	25	Volc Felsic Alt	VO12043528	C03343
3344	470043	5434380	17	Volc Felsic Alt	VO12043528	C03344
3345	470043	5434380	6	Meta-Sediment	VO12043528	C03345
3346	470043	5434380	27	Meta-Sediment	VO12043528	C03346
3347	469979	5434883	23	?	VO12043528	C03347
3348	469979	5434883	9	Gabbro	VO12043528	C03348
3349	469979	5434883	19	Gabbro	VO12043528	C03349
3350	469979	5434883	52	Gabbro	VO12043528	C03350
3351	469979	5434883	-5	Volc Mafic	VO12043529	C03351
3352	470429	5435978	8	?	VO12043529	C03352
3353	470429	5435978	8	?	VO12043529	C03353
3354	470429	5435978	7	Volc Felsic	VO12043529	C03354
3355	470429	5435978	7	Volc Felsic	VO12043529	C03355
3356	470429	5435978	88	Volc Felsic	VO12043529	C03356
3357	470673	5434673	21	Meta-Sediment	VO12043529	C03357
3358	470673	5434673	27	?	VO12043529	C03358
3359	470673	5434673	-5	Meta-Sediment	VO12043529	C03359
3360	470673	5434673	10	Gabbro	VO12043529	C03360
3361	470673	5434673	260	?	VO12043529	C03361
3362	471694	5434228	26	Gabbro	VO12043529	C03362
3363	471694	5434228	6	Volc Mafic	VO12043529	C03363
3364	471694	5434228	25	Volc Mafic	VO12043529	C03364
3365	471694	5434228	14	?	VO12043529	C03365
3366	471694	5434228	-5	Volc Felsic	VO12043529	C03366
3367	471694	5434228	-5	Volc Felsic	VO12043529	C03367
3368	471694	5434228	5	?	VO12043529	C03368
3370	472715	5434239	61	Meta-Sediment	VO12043529	C03370
3371	472715	5434239	8	?	VO12043529	C03371
3372	472715	5434239	10	Meta-Sediment	VO12043529	C03372
3373	472715	5434239	66	Gabbro	VO12043529	C03373
3374	472715	5434239	47	Gabbro Alt	VO12043529	C03374
3375	472715	5434239	23	Gabbro	VO12043529	C03375
3376	472689	5433503	42	?	VO12043529	C03376
3377	472689	5433503	11	Volc Mafic	VO12043529	C03377
3378	472689	5433503	33	?	VO12043529	C03378
3379	472689	5433503	7	Volc Felsic	VO12043529	C03379
3380	472689	5433503	19	Volc Felsic	VO12043529	C03380

March 2012

## **Table 4**

### **Results Revolver Property - Lucky South**

**Table of Results - Revolver Property / Lucky South Block**

Sample	Eastern	Northern	Au ppb	Rock Type	Work Order - ALS	Lab Sample
3381	473679	5432980	27	Meta-Sediment	VO12043529	C03381
3382	473679	5432980	-5	Meta-Sediment	VO12043529	C03382
3383	473679	5432980	19	Gabbro Alt	VO12043529	C03383
3384	473679	5432980	13	?	VO12043529	C03384
3385	473679	5432980	30	Volc Mafic	VO12043529	C03385
3386	473679	5432980	58	Volc Felsic	VO12043529	C03386
3387	473679	5432980	20	?	VO12043529	C03387
3388	473478	5431922	9	Volc Felsic	VO12043529	C03388
3389	473478	5431922	19	Gabbro	VO12043529	C03389
3390	473478	5431922	9	Meta-Sediment	VO12043529	C03390
3391	473478	5431922	19	Volc Mafic	VO12043529	C03391
3392	473478	5431922	30	Volc Mafic	VO12043529	C03392
3393	473478	5431922	9	?	VO12043529	C03393
3394	473478	5431922	36	Meta-Sediment	VO12043529	C03394
3395	473478	5431922	7	Volc Felsic	VO12043529	C03395
3396	473478	5431922	6	Gabbro	VO12043529	C03396
3397	471991	5432619	21	Volc Felsic	VO12043529	C03397
3398	471991	5432619	55	Volc Felsic	VO12043529	C03398
3399	471991	5432619	9	Meta-Sediment	VO12043529	C03399
3400	471991	5432619	-5	Gabbro	VO12043529	C03400
3401	471991	5432619	19	?	VO12043529	C03401
3402	471991	5432619	34	?	VO12043529	C03402
3403	471991	5432619	28	Volc Felsic	VO12043529	C03403
3404	471991	5432619	144	?	VO12043529	C03404
3405	471991	5432619	-5	Gabbro	VO12043529	C03405
3406	471472	5432259	69	Gabbro Alt	VO12043529	C03406
3407	471472	5432259	25	Gabbro Alt	VO12043529	C03407
3408	471472	5432259	6	?	VO12043529	C03408
3409	471472	5432259	29	Volc Felsic	VO12043529	C03409
3410	471472	5432259	59	Volc Felsic	VO12043529	C03410
3411	471472	5432259	18	Meta-Sediment	VO12043529	C03411
3412	471472	5432259	-5	Volc Mafic	VO12043529	C03412
3413	471472	5432259	14	Volc Mafic	VO12043529	C03413
3414	471472	5432259	7	?	VO12043529	C03414
3415	471472	5432259	27	?	VO12043529	C03415
3416	471472	5432259	9	Gabbro	VO12043529	C03416
3417	471472	5432259	7	Meta-Sediment	VO12043529	C03417
3418	471472	5432259	50	Gabbro Alt	VO12043529	C03418
3419	471472	5432259	19	?	VO12043529	C03419
3420	471472	5432259	31	Gabbro	VO12043529	C03420
3421	471197	5431492	25	Gabbro	VO12043529	C03421
3422	471197	5431492	44	Volc Mafic	VO12043529	C03422
3423	471197	5431492	18	Volc Felsic	VO12043529	C03423
3424	471197	5431492	79	Gabbro	VO12043529	C03424
3425	471197	5431492	13	?	VO12043529	C03425

**Table of Results - Revolver Property / Lucky South Block**

Sample	Eastern	Northern	Au ppb	Rock Type	Work Order - ALS	Lab Sample
3426	471197	5431492	7	Volc Felsic	VO12043529	C03426
3427	471197	5431492	5	?	VO12043529	C03427
3428	471197	5431492	38	?	VO12043529	C03428
3429	471197	5431492	-5	Gabbro	VO12043529	C03429
3430	470784	5430645	11	?	VO12043529	C03430
3431	470784	5430645	7	Volc Felsic	VO12043529	C03431
3432	470784	5430645	98	Meta-Sediment	VO12043529	C03432
3433	470784	5430645	9	Gabbro	VO12043529	C03433
3434	470784	5430645	8	Gabbro Alt	VO12043529	C03434
3435	470784	5430645	5	Volc Felsic	VO12043529	C03435
3436	470784	5430645	-5	Volc Mafic	VO12043529	C03436
3437	470784	5430645	-5	?	VO12043529	C03437
3438	470784	5430645	5	Volc Felsic	VO12043529	C03438
3439	470112	5430133	16	Meta-Sediment	VO12043529	C03439
3440	470112	5430133	-5	?	VO12043529	C03440
3441	470112	5430133	8	Volc Mafic	VO12043529	C03441
3442	470112	5430133	-5	Volc Felsic	VO12043529	C03442
3443	470112	5430133	6	Gabbro Alt	VO12043529	C03443
3444	470112	5430133	15	Gabbro	VO12043529	C03444
3445	469678	5429430	42	?	VO12043529	C03445
3446	469678	5429430	191	Volc Mafic	VO12043529	C03446
3447	469678	5429430	-5	Volc Felsic	VO12043529	C03447
3448	469678	5429430	67	?	VO12043529	C03448
3449	469678	5429430	68	Volc Mafic	VO12043529	C03449
3450	470668	5432561	31	Gabbro	VO12043529	C03450
3451	470668	5432561	20	Meta-Sediment	VO12044367	C03451
3452	470668	5432561	5	Meta-Sediment	VO12044367	C03452
3453	470668	5432561	38	Volc Felsic	VO12044367	C03453
3454	470668	5432561	-5	Gabbro	VO12044367	C03454
3455	470668	5432561	16	Gabbro	VO12044367	C03455
3456	470668	5432561	47	Gabbro	VO12044367	C03456
3457	470287	5432714	-5	Volc Mafic	VO12044367	C03457
3458	470287	5432714	20	Gabbro	VO12044367	C03458
3459	470287	5432714	87	Meta-Sediment	VO12044367	C03459
3460	470287	5432714	6	Gabbro	VO12044367	C03460
3461	470287	5432714	24	Volc Mafic	VO12044367	C03461
3462	470287	5432714	50	Meta-Sediment	VO12044367	C03462
3463	469816	5432322	29	?	VO12044367	C03463
3464	469816	5432322	25	Gabbro	VO12044367	C03464
3465	469816	5432322	7	Meta-Sediment	VO12044367	C03465
3466	469816	5432322	21	Volc Felsic	VO12044367	C03466
3467	469816	5432322	122	Volc Felsic	VO12044367	C03467
3468	469816	5432322	65	?	VO12044367	C03468
3469	469102	5432555	21	Meta-Sediment	VO12044367	C03469
3470	469102	5432555	22	Volc Felsic	VO12044367	C03470

**Table of Results - Revolver Property / Lucky South Block**

<b>Sample</b>	<b>Eastern</b>	<b>Northern</b>	<b>Au ppb</b>	<b>Rock Type</b>	<b>Work Order - ALS</b>	<b>Lab Sample</b>
3471	469102	5432555	80	Gabbro	VO12044367	C03471
3472	469102	5432555	8	?	VO12044367	C03472
3473	469102	5432555	53	?	VO12044367	C03473
3474	469102	5432555	6	Volc Mafic	VO12044367	C03474
3475	469102	5432555	6	?	VO12044367	C03475
3476	469594	5431724	13	Volc Felsic	VO12044367	C03476
3477	469594	5431724	8	?	VO12044367	C03477
3478	469594	5431724	43	?	VO12044367	C03478
3479	469594	5431724	11	?	VO12044367	C03479
3480	469594	5431724	13	Volc Mafic	VO12044367	C03480
3481	469594	5431724	23	?	VO12044367	C03481
3482	469594	5431724	24	?	VO12044367	C03482
3484	469487	5431181	18	Volc Felsic	VO12044367	C03484
3485	469487	5431181	19	?	VO12044367	C03485
3486	469487	5431181	186	?	VO12044367	C03486
3487	469487	5431181	30	?	VO12044367	C03487
3488	469487	5431181	15	Gabbro	VO12044367	C03488
3489	469340	5430861	12	Volc Mafic	VO12044367	C03489
3490	469340	5430861	33	Meta-Sediment	VO12044367	C03490
3491	469340	5430861	50	Gabbro	VO12044367	C03491
3492	469340	5430861	17	?	VO12044367	C03492
3493	469340	5430861	189	Volc Mafic	VO12044367	C03493
3494	469340	5430861	54	Meta-Sediment	VO12044367	C03494
3495	469281	5430100	5	?	VO12044367	C03495
3496	469281	5430100	11	Volc Felsic	VO12044367	C03496
3497	469281	5430100	90	?	VO12044367	C03497
3498	469281	5430100	100	Volc Felsic	VO12044367	C03498
3499	469281	5430100	37	Volc Felsic	VO12044367	C03499
3500	469281	5430100	26	Meta-Sediment	VO12044367	C03500

## **Annexe I**

### **List of References and Descriptions**

Report Number	Author (s)	Title	Year	Township	Type
3D 2005-01	RABEAU, O, FALLARA, F	MODELE 3D GEO-INTEGRE LE LONG DU FRONT DU GRENVILLE (1.0)	2007		COMPILATION
AP 1901-01	O'SULLIVAN, H	DEUXIEME RAPPORT SUR L'ETENDUE DE PAYS SITUEE ENTRE LE LAC ST-JEAN ET LA BAIE JAMES.	1901		
CARTE 1258	IMBAULT, P E, REMICK, J H	REGION DE WASWANIPI-CHIBOUGAMAU	1958		LEVE GEOLOGIQUE
CL 032B		CARTE DE LOCALISATION DES TRAVAUX GEOSCIENTIFIQUES 032B	1981		COMPILATION
CL 032G		CARTE DE LOCALISATION DES TRAVAUX GEOSCIENTIFIQUES 032G	1981		COMPILATION
DP-2004-01	PICHE, M	SIX CARTES NUMERIQUES D'ALTERATIONS HYDROTHERMALES EN ABITIBI (32C04, 32E08, 32G03, 32G04, 32G07 ET 32G08)	2004		COMPILATION
DP-2006-01	DION, D J	DONNEES NUMERIQUES DES LEVES GEOPHYSIQUES AEROPORTES VERSES AUX TRAVAUX STATUTAIRES, REGION DU GRENVILLE ET DES BASSES TERRES DU SAINT-LAURENT (A L'OUEST DE LA LONGITUDE 68°)	2006		COMPILATION
DP-2006-02	DION, D J, LONCOL-DAIGNEAULT, D	DONNEES NUMERIQUES DES LEVES GEOPHYSIQUES AEROPORTES VERSES AUX TRAVAUX STATUTAIRES, REGION DE L'ABITIBI	2006		COMPILATION
DP-83-08		LEVE AERIEN PAR INPUT MK VI - REGION DE MARIN-BARRY	1983	URBAN	LEVE INPUT
DP-84-03		COMPILATION D'ANOMALIES ELECTROMAGNETIQUES DE TYPE INPUT - REGION DE L'ABITIBI	1983		COMPILATION
DP-96-01	DION, D J, LEFEBVRE, D L	DONNEES NUMERIQUES (PROFILS) DES LEVES GEOPHYSIQUES AEROPORTES DU QUEBEC (SNRC 32B ET 32C)	1997		LEVE MAGNETIQUE AERIEN, LEVE E M AERIEN
DP-96-05	DION, D J, LEFEBVRE, D	DONNEES NUMERIQUES (PROFILS) DES LEVES GEOPHYSIQUES AEROPORTES DU QUEBEC - SNRC 32G ET 32H	1997		LEVE E M AERIEN
DP 2010-04	ST-HILAIRE, C, D'AMOURS, I	LEVE MAGNETIQUE AEROPORTE DANS LES SECTEURS DE VILLEBOIS ET SENNETERRE, ABITIBI	2010		LEVE MAGNETIQUE AERIEN
DP 2010-05	KEATING, P, LEFEBVRE, D	SERIE DES CARTES GEOPHYSIQUES, PARTIES DES SNRC 31, 32, 41 ET 42, CEINTURE DE ROCHES VERTES DE L'ABITIBI, QUEBEC ET ONTARIO	2010		COMPILATION
DP 2010-09	KEATING, P, D'AMOURS, I	REEDITION DES DONNEES NUMERIQUES EN FORMAT GEOSOFT (PROFILS) DES LEVES AEROPORTES DE L'ABITIBI, AU QUEBEC	2010		LEVE MAGNETIQUE, COMPILATION
DPV 671	ASSAD, J R, FAVINI, G	PREVISIONS DE MINERAI CUPRO-ZINCIFERE DANS LE NORD-OUEST QUEBECOIS, CARTOGRAPHIE A L'ECHELLE DE 1/100 000	1980		
DPV 744	AVRAMTCHEV, L, LEBEL-DROLET, S	CATALOGUE DES GITES MINERAUX DU QUEBEC; REGION DE L'ABITIBI	1981		COMPILATION
DV 2002-11	BERCLAZ, A, MAURICE, C	CARTES PRELIMINAIRES EN COULEUR DES TRAVAUX DE CARTOGRAPHIE ET DES ETUDES 2002-2003	2002		LEVE GEOLOGIQUE, COMPILATION
DV 83-11		STRATIGRAPHIE DES ENSEMBLES VOLCANO-SEDIMENTAIRES ARCHEENS DE L'ABITIBI: ETAT DES CONNAISSANCES	1983		LEVE GEOLOGIQUE, PALEOMAGNETISME
DV 83-16		CARTE LITHOSTRATIGRAPHIQUE DE LA SOUS-PROVINCE DE L'ABITIBI	1984		COMPILATION, LEVE GEOLOGIQUE
DV 88-06		TRAITEMENT DES DONNEES GEOPHYSIQUES (AEROMAGNETIQUES) - LAC HEBERT	1988	BELMONT	LEVE E M AERIEN, LEVE GRADIOMETRIQUE AERIEN, LEVE INPUT, LEVE MAGNETIQUE AERIEN
DV 88-13		TRAITEMENT DES DONNEES GEOPHYSIQUES (AEROMAGNETIQUES) - LAC LAGACE	1988	BUTEUX	LEVE E M AERIEN, LEVE GRADIOMETRIQUE AERIEN, LEVE INPUT, LEVE MAGNETIQUE AERIEN

Report Number	Author (s)	Title	Year	Township	Type
DV 89-02	BUTEAU, P	ATLAS DES TOURBIERES DU QUEBEC MERIDIONAL	1989		EVALUATION DES RESERVES, TOURBIERE
DV 89-04	HOCQ, M	CARTE LITHOTECTONIQUE DES SOUS-PROVINCES DE L'ABITIBI ET DU PONTIAC	1990		COMPILATION
EP 2002-04	DION, C, LAMOTHE, D	EVALUATION DU POTENTIEL EN MINERALISATIONS DE TYPE SULFURES MASSIFS VOLCANOGENES DE LA REGION DE CHIBOUGAMAU (32G) - INTEGRATION DE GEODONNEES PAR LA TECHNOLOGIE D'ANALYSE SPATIALE	2002		EVALUATION TECHNIQUE
EP 2005-01	LAMOTHE, D, HARRIS, J R	EVALUATION DU POTENTIEL EN MINERALISATIONS DE TYPE SULFURES MASSIFS VOLCANOGENES (SMV) POUR L'ABITIBI	2005		COMPILATION
EP 2005-02	LAMOTHE, D, HARRIS, J R	ASSESSMENT OF THE POTENTIAL FOR VOLCANOGENIC MASSIVE SULPHIDE (VMS) DEPOSITS IN ABITIBI	2005		COMPILATION
EP 2006-01	LAMOTHE, D, HARRIS, J R	EVALUATION DU POTENTIEL EN MINERALISATIONS DE TYPE OR OROGENIQUE DES ROCHES ARCHEENNES DE L'ABITIBI	2006		COMPILATION
EP 2006-02	LAMOTHE, D, HARRIS, J R	ASSESSMENT OF THE POTENTIAL FOR OROGENIC GOLD DEPOSITS IN THE ABITIBI	2006		COMPILATION
EP 2006-03	LABBE, J Y, PILOTE, P	EVALUATION DU POTENTIEL MINERAL POUR LES GITES PORPHYRIQUES DE CU-AU-MO DE L'ABITIBI	2006		COMPILATION
EP 2007-01	LABBE, J Y, PILOTE, P	ASSESSMENT OF THE POTENTIAL FOR PORPHYRY CU-AU-MO DEPOSITS IN THE ABITIBI	2007		COMPILATION
EP 2009-03	TREPANIER, S	EVALUATION DU POTENTIEL EN URANIUM ET EN CU-AU-U ET CARTOGRAPHIE PREVISIONNELLE D'INTRUSIONS MAFIQUES-ULTRAMAFIQUES DANS LE GRENVILLE	2009		COMPILATION
EP 2011-01	LAMOTHE, D	POTENTIEL EN MINERALISATIONS DE SULFURES MASSIFS VOLCANOGENES DE L'ABITIBI - VERSION 2011	2011		COMPILATION
EP 2011-02	LAMOTHE, D	VOLCANIC MASSIVE SULPHIDE POTENTIAL IN THE ABITIBI - 2011 VERSION	2012		COMPILATION
ES 002	DUGAS, J, DUQUETTE, G	BIBLIOGRAPHIE ANNOTEE SUR LA MINERALISATION METALLIQUE DANS LES REGIONS DE NORANDA, MATAGAMI, VAL D'OR ET CHIBOUGAMAU	1967		ANALYSE DE ROCHE, LEVE GEOLOGIQUE, PRODUCTION
ES 002(A)	DUGAS, J, DUQUETTE, G	ANNOTATED BIBLIOGRAPHY ON METALLIC MINERALIZATION IN THE REGIONS OF NORANDA, MATAGAMI, VAL-D'OR, CHIBOUGAMAU	1967		ANALYSE DE ROCHE, LEVE GEOLOGIQUE, PRODUCTION
FG 032B - CL		CARTE DE LOCALISATION DES GITES MINERAUX - 032B	1990		COMPILATION
FG 032G - CL		CARTE DE LOCALISATION DES GITES MINERAUX - 032G	1990		COMPILATION
GM 05384	INGHAM, W N	NOTES ON MINERAL OCCURENCES	1945		LEVE GEOLOGIQUE
GM 16783	LONDRY, J	REPORT ON GEOLOGICAL, MAGNETIC AND ELECTROMAGNETIC SURVEYS, GROUP 7	1965	LACROIX	LEVE E M AU SOL, LEVE GEOLOGIQUE, LEVE MAGNETIQUE AU SOL
GM 26621	CIMON, J	EXPOSE SOMMAIRE SUR LES ACTIVITES MINIERES DANS LA REGION DE CHIBOUGAMAU	1970		PRODUCTION
GM 32468	BERGMANN, H J	REPORT ON GEOPHYSICAL SURVEYS ON GRID NUMBERS 38, 39, 41 AND 45	1976	LACROIX	LEVE E M AU SOL, LEVE MAGNETIQUE AU SOL

Report Number	Author (s)	Title	Year	Township	Type
GM 32469	BERGMANN, H J	REPORT ON GEOPHYSICAL SURVEYS ON GRID NUMBER 46, BARRY PROJECT	1976	LACROIX	LEVE E M AU SOL, LEVE MAGNETIQUE AU SOL
GM 32470	BERGMANN, H J	REPORT ON GEOPHYSICAL SURVEYS ON GRID NUMBER 55, BARRY PROJECT	1976	LACROIX	LEVE E M AU SOL, LEVE MAGNETIQUE AU SOL
GM 32471	BERGMANN, H J	REPORT ON GEOPHYSICAL SURVEYS ON GRIDS NUMBERED 56 AND 57, BARRY PROJECT	1976	BUTEUX	LEVE E M AU SOL, LEVE MAGNETIQUE AU SOL
GM 32482	STEMP, R W	REPORT ON AIRBORNE GEOPHYSICAL SURVEY IN THE BARRY PROJECT AREA	1975		LEVE E M AERIEN, LEVE MAGNETIQUE AERIEN
GM 33284	COTE, R	GEOLOGICAL REPORT OF THE AREAS COVERING AEM ANOMALIES 12, 32, 55, 92B, 95 AND 101	1977	BARRY	ANALYSE DE ROCHE, LEVE GEOLOGIQUE
GM 33285	COTE, R	REPORT ON SOIL GEOCHEMICAL SURVEYS, AREAS ON AEM ANOMALIES 32 AND 55	1977	BARRY	SOL, GEOCHIMIE
GM 34000		EVALUATION DU POTENTIEL MINIER DU BASSIN DE LA BAIE JAMES	1972		COMPILATION, EVALUATION TECHNIQUE
GM 34001	TREMBLAY, M, MARLEAU, R A	ETUDE DE LA GEOLOGIE ET DU POTENTIEL MINERAL DU TERRITOIRE DE LA BAIE-JAMES	1975		COMPILATION, EVALUATION TECHNIQUE
GM 34002	BARR, W H, BUXBAUM, R W	SUMMARY REPORT ON MINERAL RESOURCE STUDIES IN THE JAMES BAY REGION	1974		ETUDE DE RENTABILITE
GM 35597		MINERAL OCCURRENCES IN THE ABITIBI TERRITORY	1945		LEVE GEOLOGIQUE
GM 38167	MARLEAU, R A	ETUDE PRELIMINAIRE DU POTENTIEL EN MINERAUX INDUSTRIELS & CERTAINS METALLIQUES DU TERRITOIRE DE LA BAIE JAMES	1979		ETUDE DE RENTABILITE, EVALUATION TECHNIQUE
GM 38804	DE CARLE, R J	AIRBORNE ELECTROMAGNETIC SURVEY, BARRY (NORTH) PROJECT	1977	BELMONT	LEVE INPUT, LEVE MAGNETIQUE AERIEN
GM 38826	STEMP, R W	REPORT ON AIRBORNE GEOPHYSICAL SURVEY IN THE BARRY PROJECT AREA	1975	BAILLY	LEVE E M AERIEN, LEVE MAGNETIQUE AERIEN
GM 38828	COTE, R, BEAULIEU, J R	SUMMARY REPORT, BARRY LAKE PROJECT	1977	BAILLY	ANALYSE DE ROCHE, LEVE GEOLOGIQUE, SONDAGE AU DIAMANT, LOCALISATION DE SONDAGE
GM 38829	COTE, R	PROGRESS REPORT, BARRY NORTH AND BARRY (REASSESSMENT) PROJECTS	1977	BELMONT	LEVE GEOLOGIQUE, SONDAGE AU DIAMANT
GM 38830	COTE, R, BEAULIEU, J R	GEOLOGY AND COMPILATION, BARRY PROJECT	1976	LACROIX	LEVE GEOLOGIQUE
GM 41250	DUPLESSIS, D, GUIMOND, J L	RAPPORT ANNUEL 1983: PROJET MARIN-BARRY	1984	BARRY	LEVE E M H, LEVE GEOLOGIQUE, LEVE MAGNETIQUE AU SOL, SONDAGE AU DIAMANT
GM 41254	DUPLESSIS, D	COMPILATION RESULTS, MARIN-BARRY PROJECT	1984	BARRY	ANALYSE DE ROCHE, EVALUATION TECHNIQUE, LEVE GEOLOGIQUE
GM 41353	ARCHER, P, TREMBLAY, E	RAPPORT SUR LES TRAVAUX DE RECONNAISSANCE EFFECTUES SUR LES PROPRIETES DU PROJET MARIN-BARRY	1984	BELMONT	ANALYSE DE ROCHE, LEVE GEOLOGIQUE, LEVE MAGNETIQUE AU SOL, LEVE V L F AU SOL
GM 43738	BECKMANN, H	REPORT ON GEOPHYSICAL SURVEYS, CAMCHIB OPTION PROJECT	1986	LACROIX	LEVE E M H, LEVE MAGNETIQUE AU SOL, LEVE V L F AU SOL
GM 44050	BERTONI, C H	GEOLOGICAL REPORT, CAMCHIB OPTION	1986	LACROIX	LEVE GEOLOGIQUE, ANALYSE DE ROCHE

Report Number	Author (s)	Title	Year	Township	Type
GM 44463	CAVEY, G, LEBEL, L	REPORT ON BUTEUX PROPERTY AND DESJARDINS PROPERTY	1986	BUTEUX	EVALUATION TECHNIQUE
GM 44537	LAMOTHE, G	RAPPORT DE LEVES GEOPHYSIQUES, PROPRIETE BELMONT-LACROIX	1987	BELMONT	LEVE MAGNETIQUE AU SOL, LEVE V L F AU SOL
GM 45207	MCCURDY, S	A REPORT ON GEOPHYSICAL SURVEYS, EAGLE RIVER PROPERTY	1987	BELMONT	LEVE MAGNETIQUE AU SOL, LEVE V L F AU SOL
GM 46447	HUSSEY, J	RAPPORT GEOLOGIQUE, PROPRIETE FREEMAN-BUTEUX	1987	BUTEUX	ANALYSE DE ROCHE, LEVE GEOLOGIQUE, SONDAGE AU DIAMANT
GM 46701	MCCURDY, S	A REPORT ON GEOPHYSICAL SURVEYS CONDUCTED ON THE EAGLE RIVER PROPERTY	1988	BELMONT	LEVE MAGNETIQUE AU SOL, LEVE V L F AU SOL
GM 47177	LAMOTHE, G	RAPPORT DE TRAVAUX D'EXPLORATION, PROPRIETE BELMONT-LACROIX	1988	BELMONT	LEVE V L F AU SOL, LOCALISATION DE SONDAGE, LEVE GEOLOGIQUE
GM 47330	MCCONNELL, D L	DIGHAM III SURVEY, LAC BARRY PROJECT	1988	BAILLY	LEVE DIGHAM, LEVE MAGNETIQUE AERIEN, LEVE V L F AERIEN
GM 47657	MCCONNELL, D L	DIGHAM III SURVEY, PROPRIETE LACROIX	1988	LACROIX	LEVE DIGHAM, LEVE MAGNETIQUE AERIEN, LEVE V L F AERIEN
GM 47996	MCCONNELL, D L	DIGHAM III SURVEY, PROPRIETE LACROIX	1988	LACROIX	LEVE DE RESISTIVITE, LEVE MAGNETIQUE AERIEN, LEVE V L F AERIEN
GM 48414	TAQUET, B	RAPPORT DE TRAVAUX D'EXPLORATION, PROPRIETE BELMONT-LACROIX	1989	BELMONT	LEVE MAGNETIQUE AU SOL, LEVE V L F AU SOL, SOL, GEOCHIMIE
GM 48455	RACINE, M	RAPPORT GEOLOGIQUE, PROPRIETE FREEMAN-BUTEUX	1989	BUTEUX	ANALYSE DE ROCHE, LEVE GEOLOGIQUE, SONDAGE AU DIAMANT
GM 48537	TAQUET, B, LAMOTHE, G	RAPPORT DE TRAVAUX D'EXPLORATION, PROPRIETE LAC FECTEAU	1989	BUTEUX	LEVE GRADIOMETRIQUE AU SOL, LEVE MAGNETIQUE AU SOL, LEVE V L F AU SOL, LOCALISATION DE SONDAGE
GM 48572	RICHER, V	RAPPORT SUR LES RESULTATS DE LA CARTOGRAPHIE GEOLOGIQUE ET DE L'ECHANTILLONNAGE LITHOGEOCHIMIQUE, PROPRIETE RIVIERE DE L'AIGLE	1989	BELMONT	ANALYSE DE ROCHE, LEVE GEOLOGIQUE
GM 49036	PLANTE, L, LAVOIE, C	GEOPHYSICAL SURVEYS - HEM & MAG, LAC ROULEAU BLOCK & EAST BLOCK	1989	LACROIX	LEVE E M H, LEVE GRADIOMETRIQUE AU SOL, LEVE MAGNETIQUE AU SOL
GM 49193	IMBEAU, G	EXPLORATION PROGRAM, EAST ROULEAU PROPERTY	1989	LACROIX	ANALYSE DE ROCHE, LEVE GRADIOMETRIQUE AU SOL, LEVE MAGNETIQUE AU SOL, SONDAGE AU DIAMANT
GM 52224	BOILEAU, P, TURCOTTE, R	GEOPHYSICAL SURVEYS, FECTEAU LAKE PROJECT	1993	BUTEUX	LEVE E M H, LEVE MAGNETIQUE AU SOL
GM 52630	BEAUREGARD, A J, GAUDREULT, D	REPORT ON A DETAILED GEOLOGICAL SURVEY AND POWER STRIPPING PROGRAM, PROJECT 495 (FECTEAU LAKE OPTION)	1993	BUTEUX	ANALYSE DE ROCHE, LEVE GEOLOGIQUE, LOCALISATION DE SONDAGE, TRAVAUX DE SURFACE
GM 52631	BOILEAU, P	INDUCED POLARIZATION SURVEY, FECTEAU LAKE PROJECT (495)	1993	BUTEUX	LEVE DE P P
GM 52716	BEAUREGARD, A J, GAUDREULT, D	REPORT ON A DETAILED GEOLOGICAL SURVEY, PROJECT 494A (BUTEUX PROPERTY)	1993	BUTEUX	ANALYSE DE ROCHE, LEVE GEOLOGIQUE, LOCALISATION DE SONDAGE

Report Number	Author (s)	Title	Year	Township	Type
GM 52734	BUSSIERES, Y	REPORT ON THE 1994 WINTER PROGRAM FROM PDC PROPERTIES IN THE URBAN-BARRY SEGMENT OF THE ABITIBI GREENSTONE BELT	1994	BUTEUX	LEVE DE P P, LEVE GEOLOGIQUE, LEVE MAGNETIQUE AERIEN, LEVE V L F AERIEN, LOCALISATION DE SONDAGE
GM 52735	CHAKRIDI, R	HIGH SENSITIVITY ELECTROMAGNETIC AND MAGNETIC SURVEY, BUTEUX PROJECT	1994	BUTEUX	LEVE MAGNETIQUE AERIEN, LEVE V L F AERIEN
GM 52736	BOILEAU, P, TURCOTTE, R	INDUCED POLARIZATION SURVEY, FECTEAU LAKE (495) AND BUTEUX OPTION (494-A) PROJECTS	1994	BUTEUX	LEVE DE P P, AIR, GEOCHIMIE
GM 54038	POIRIER, M	RAPPORT FINAL DES TRAVAUX, ETE 1995	1995		ANALYSE DE ROCHE, LEVE E M AU SOL, BLOC ERRATIQUE, TRAVAUX DE SURFACE
GM 56185	PLANTE, L	LEVE DE POLARISATION PROVOQUEE, PROJET BELMONT	1998	BELMONT	LEVE DE P P
GM 56322	CLOUTIER, P, LAPOINTE, M	RAPPORT SUR LA CAMPAGNE D'EXPLORATION 1997, PROPRIETE BELMONT	1998	BELMONT	ANALYSE DE ROCHE, LEVE GEOLOGIQUE, LEVE E M AU SOL, SOL, GEOCHIMIE
GM 56327	DE CARLE, R J	REPORT ON A COMBINED HELICOPTER-BORNE MAGNETIC, ELECTROMAGNETIC AND VLF-EM SURVEY	1997	BELMONT	LEVE V L F AERIEN, LEVE MAGNETIQUE AERIEN
GM 56720	VIGER, J	RAPPORT DE PROSPECTION, PROJET NARCISSE	1996	BRESSANI	ANALYSE DE ROCHE, LEVE GEOLOGIQUE, LEVE E M AU SOL, LEVE V L F AU SOL, LEVE MAGNETIQUE AU SOL
GM 57943	FAVINI, G	ESSAI DE LOCALISATION DE REGIONS A HAUT POTENTIEL EN SULFURES MASSIFS AU MOYEN DE L'ANALYSE STATISTIQUE A VARIABLES MULTIPLES APPLIQUEE AUX CARTES AEROMAGNETIQUES ET GRAVIMETRIQUES REGIONALES	0		EVALUATION TECHNIQUE
GM 58432	SAULNIER, I	RAPPORT GEOLOGIQUE, PROJET CARCAJOU	1998	LESPINAY	ANALYSE DE ROCHE, TRAVAUX DE SURFACE, LEVE E M AU SOL, LEVE MAGNETIQUE AU SOL, SOL, GEOCHIMIE, BLOC ERRATIQUE
GM 60741	DESCARREAUX, J	RAPPORT DES TRAVAUX DE 2003, PROPRIETE DU LAC CHANCEUX	2003		ANALYSE DE ROCHE, TRAVAUX DE SURFACE
GM 61197	BERUBE, P	GPS-POSITIONED MAGNETIC FIELD SURVEY, EAGLE RIVER PROPERTY	2004	BELMONT	LEVE MAGNETIQUE AU SOL
GM 61404	BERUBE, P	RESISTIVITY / INDUCED POLARIZATION SURVEY, EAGLE RIVER MINING PROPERTY	2004	LESPINAY	LEVE DE P P, LEVE DE RESISTIVITE
GM 61430	LAFOREST, J	SUIVI AU SOL D'UN LEVE ELECTROMAGNETIQUE HELIPORTE VTEM, PROPRIETE RIVIERE DE L'AIGLE	2004	BELMONT	ANALYSE DE ROCHE, TRAVAUX DE SURFACE, LEVE E M AU SOL, LEVE MAGNETIQUE AU SOL, LEVE V L F AU SOL
GM 61431	BAGRIANSKI, A	REPORT ON A HELICOPTER-BORNE TIME DOMAIN ELECTROMAGNETIC GEOPHYSICAL SURVEY, CHIBOUGAMAU AREA	2004	BELMONT	LEVE E M AERIEN, LEVE MAGNETIQUE AERIEN
GM 61737	DESCARREAUX, J, TREMBLAY, L	RAPPORT DES TRAVAUX DE 2004, PROPRIETE DU LAC CHANCEUX	2005	LACROIX	ANALYSES, ANALYSE DE ROCHE, TRAVAUX DE SURFACE
GM 61866	GAGNON, R, BERUBE, P	CAMPAGNE DE FORAGE AUTOMNE 2004-HIVER 2005, PROPRIETE EAGLE RIVER	2005	LESPINAY	ANALYSE DE ROCHE, SONDAGE AU DIAMANT, LEVE DE P P

Report Number	Author (s)	Title	Year	Township	Type
GM 61867	RIVEST, H	HORIZONTAL-LOOP ELECTROMAGNETIC SURVEY, EAGLE RIVER PROPERTY	2005	LESPINAY	LEVE E M H
GM 62321	DESGAGNE, L	RAPPORT DE TRAVAUX D'EXPLORATION SIMPLIFIE	2006	BUTEUX	TRAVAUX DE SURFACE
GM 62344	DESCARREAU, J	RAPPORT DES TRAVAUX DE 2005, PROPRIETE DU LAC CHANCEUX	2006	LACROIX	TRAVAUX DE SURFACE, LOCALISATION DE SONDAGE
GM 62346	DUBOIS, M	LEVE DE RESISTIVITE / POLARISATION PROVOQUEE, PROJET LAC CHANCEUX	2005	LACROIX	LEVE DE RESISTIVITE, LEVE DE P P
GM 62902	JEBRAK, M, FURIC, R	MODELISATION 3D DES CORPS BRECHIEQUES ET MINERALISES	2005		LEVE GEOLOGIQUE
GM 62919	DE CORTA, H, DE CHAVIGNY, P	RAPPORT D'UNE CAMPAGNE D'ECHANTILLONNAGE D'ESKERS ET D'ANALYSE DE MINERAUX LOURDS SECTEUR CHAPAIS-CHIBOUGAMAU (32G), QUEBEC	2005		FLUVIOGLACIARE, GEOCHIMIE, ESKER, GEOCHIMIE
GM 63239	CHENARD, D, CHAGNON, R	RAPPORT DES TRAVAUX GEOLOGIQUES 2006-2007, PROJET BUTEUX-FECTEAU	2007	BUTEUX	EVALUATION TECHNIQUE, TRAVAUX DE SURFACE, ANALYSE DE ROCHE, LEVE GEOLOGIQUE
GM 63240	HUBERT, J M	RAPPORT D'UN LEVE DE POLARISATION PROVOQUEE EFFECTUE SUR LA PROPRIETE BUTEUX-FECTEAU	2007	BUTEUX	LEVE DE RESISTIVITE, LEVE DE P P
GM 63629	DUBOIS, M	LEVES DE MAGNETOMETRIE ET DE RESISTIVITE POLARISATION PROVOQUEE, RAPPORT D'INTERPRETATION, PROPRIETE BUTEUX GRILLES 1 ET 2	2008	BUTEUX	LEVE MAGNETIQUE AU SOL, LEVE DE P P, LEVE DE RESISTIVITE
GM 63934	LAMBERT, G, STEFFLER, E	RAPPORT D'INTERPRETATION SUR DES TRAVAUX GEOPHYSIQUES HELIPORTES, LEVES MAGNETOMETRIQUES ET ELECTROMAGNETIQUES HELIPORTES DE TYPE VTEM, PROPRIETE KENNEDY	2008	LAVOIE	LEVE VTEM, LEVE MAGNETIQUE AERIEN
GM 64092	FAURE, S	FRONT DE GRENVILLE: APPROCHE GEOPHYSIQUE	2004		COMPILATION
GM 64257	STEFFLER, E, LEGAULT, J	REPORT ON A HELICOPTER-BORNE VERSATILE TIME DOMAIN ELECTROMAGNETIC GEOPHYSICAL SURVEY, BUTEUX-FECTEAU PROPERTIES	2008	BUTEUX	LEVE VTEM, LEVE MAGNETIQUE AERIEN
GM 64258	LAMBERT, G	RAPPORT D'INTERPRETATION SUR LEVES MAGNETOMETRIQUES ET ELECTROMAGNETIQUES HELIPORTES DE TYPE VTEM, PROPRIETE BUTEUX-FECTEAU	2008	BUTEUX	LEVE VTEM, LEVE MAGNETIQUE AERIEN
GM 65099	ROBY, M	RAPPORT SUR UNE CAMPAGNE DE PROSPECTION, PROPRIETE U-DOR	2008	BELMONT	LEVE GEOLOGIQUE, ANALYSE DE ROCHE, TRAVAUX DE SURFACE
GM 65779	GAGNON, R	ECHANTILLONNAGE DE SEDIMENTS GLACIAIRES, PROPRIETE LAC LACROIX	2011	LACROIX	TILL, GEOCHIMIE
MB 90-42	JOLY, M	GEOLOGIE DE LA REGION DU LAC AUX LOUTRES ET DU LAC LACROIX - PROJET URBAN-BARRY, ABITIBI	1990	BAILLY	ANALYSE DE ROCHE, LEVE GEOLOGIQUE, LOCALISATION DE SONDAGE
MB 93-49	MOORHEAD, J, GIRARD, R	ANOMALIES AEROMAGNETIQUES CIRCULAIRES POSSIBLEMENT RELIEES A DES INTRUSIONS DE KIMBERLITE DANS LE NORD-OUEST QUEBECOIS	1996		EVALUATION TECHNIQUE, LEVE MAGNETIQUE AERIEN
MB 96-33	DAIGNEAULT, R	COULOIRS DE DEFORMATION DE LA SOUS-PROVINCE DE L'ABITIBI	1996		LEVE GEOLOGIQUE
MB 98-06	LACROIX, S	COMPILATION ET REPARTITION DES GISEMENTS POLYMETALLIQUES A TONNAGE EVALUE DANS LA SOUS-PROVINCE DE L'ABITIBI	1998		ANALYSE DE ROCHE, COMPILATION, EVALUATION DES RESERVES

Report Number	Author (s)	Title	Year	Township	Type
PRO 2001-08	STE-CROIX, L, DOUCET, P	POTENTIEL EN METAUX RARES DANS LES SOUS-PROVINCES DE L'ABITIBI ET DU PONTIAC	2001		EVALUATION TECHNIQUE
PRO 2001-09	STE-CROIX, L, DOUCET, P	RARE METAL POTENTIEL IN THE ABITIBI AND PONTIAC SUBPROVINCES	2001		EVALUATION TECHNIQUE, MINERAUX INDUSTRIELS
PRO 2009-03	LABBE, J Y	NOUVELLES DONNEES GEOCHIMIQUES DE SEDIMENTS DE FOND DE LAC DANS LA PARTIE OCCIDENTALE DU GRENVILLE QUEBECOIS: SECTEURS DE VAL D'OR, CHIBOUGAMAU ET LA TUQUE	2009		SEDIMENTS DE LAC, GEOCHIMIE
PRO 2009-04	LABBE, J Y	NEW LAKE-BOTTOM SEDIMENT GEOCHEMISTRY DATA IN THE WESTERN GRENVILLE PROVINCE IN QUEBEC: AREAS NEAR VAL-D'OR, CHIBOUGAMAU AND LA TUQUE	2009		SEDIMENTS DE LAC, GEOCHIMIE
PRO 89-02	CHARTRAND, F, COUTURE, J F	LES GITES DE L'ABITIBI DU NORD-OUEST QUEBECOIS: UN INVENTAIRE DES RECHERCHES RECENTES	1989		
PRO 92-08	MORIN, R, DION, D J	COUVERTURE GEOSCIENTIFIQUE DE LA REGION DE CHIBOUGAMAU, FEUILLET SNRC 32G	1992		COMPILATION
RG 014	MILNER, R L	REGION DU LAC BARRY, COMTE D'ABITIBI ET TERRITOIRE D'ABITIBI	1943		118 ANALYSE DE ROCHE, LEVE GEOLOGIQUE
RG 014(A)	MILNER, R L	BARRY LAKE AREA, ABITIBI COUNTY AND ABITIBI TERRITORY	1943		117 ANALYSE DE ROCHE, LEVE GEOLOGIQUE
RG 015	FREEMAN, B C	REGION DE BUTEUX, COMTE D'ABITIBI ET TERRITOIRE D'ABITIBI	1943		119 ANALYSE DE ROCHE, LEVE GEOLOGIQUE
RG 015(A)	FREEMAN, B C	BUTEUX AREA, ABITIBI COUNTY AND ABITIBI TERRITORY	1943		119 ANALYSE DE ROCHE, LEVE GEOLOGIQUE
RG 130	LAURIN, A F	LE BASSIN DU RESERVOIR GOUIN, COMTES D'ABITIBI-EST ET DE LAVIOLETTE, APERCU GEOLOGIQUE	1965		ANALYSE DE ROCHE, LEVE GEOLOGIQUE
RG 130(A)	LAURIN, A F	GOUIN RESERVOIR BASIN, ABITIBI-EAST AND LAVIOLETTE COUNTIES	1965		ANALYSE DE ROCHE, LEVE GEOLOGIQUE
RG 172	CHARRE, R	REGION DU LAC LAGACE	1976	BUTEUX	ANALYSE DE ROCHE, LEVE GEOLOGIQUE, LOCALISATION DE SONDRAGE, TOURBIERE
RG 2003-07	BANDYAYERA, D, RHEAUME, P	GEOLOGIE DE LA REGION DU LAC HEBERT (32G/03)	2004		LEVE GEOLOGIQUE
RG 2004-02	BANDYAYERA, D, RHEAUME, P	GEOLOGIE DE LA REGION DU LAC LAGACE (32B/14)	2004		LEVE GEOLOGIQUE
RP 142	FREEMAN, B C	RAPPORT PRELIMINAIRE DE LA REGION DE BUTEUX, COMTE ET TERRITOIRE D'ABITIBI	1940	BELMONT	ANALYSE DE ROCHE, LEVE GEOLOGIQUE
RP 142(A)	FREEMAN, B C	ADVANCE REPORT, BUTEUX AREA, ABITIBI COUNTY AND ABITIBI TERRITORY	1940	BELMONT	ANALYSE DE ROCHE, LEVE GEOLOGIQUE
RP 143	MILNER, R L	RAPPORT PRELIMINAIRE DE LA REGION DU LAC BARRY, COMTE ET TERRITOIRE D'ABITIBI	1939	BAILLY	ANALYSE DE ROCHE, LEVE GEOLOGIQUE
RP 143(A)	MILNER, R L	BARRY LAKE AREA, ABITIBI COUNTY AND ABITIBI TERRITORY	1939	BAILLY	ANALYSE DE ROCHE, LEVE GEOLOGIQUE
RP 2005-02	DAVIS, D W, DAVID, J	DATATIONS U-PB EFFECTUEES EN SUPPORT AUX TRAVAUX DE CARTOGRAPHIE GEOLOGIQUE ET DE COMPILATION GEOSCIENTIFIQUE DU SGNO (2003-2004)	2005		ANALYSES, ANALYSE DE ROCHE, GEOCHRONOLOGIE
RP 2005-02(A)	DAVIS, D W, DAVID, J	U-PB AGE DATING CARRIED OUT IN SUPPORT OF THE SGNO'S GEOLOGICAL MAPPING AND GEOSCIENCE COMPILATION WORK (2003-2004)	2005		ANALYSE DE ROCHE, ANALYSES
RP 2005-03	CADERON, S, ROY, P	ETUDE METAMORPHIQUE D'UN SEGMENT DU FRONT DU GRENVILLE	2005		LEVE GEOLOGIQUE
RP 2005-03(A)	CADERON, S, ROY, P	METAMORPHIC STUDY OF A PORTION OF THE GRENVILLE FRONT	2005		LEVE GEOLOGIQUE

<b>Report Number</b>	<b>Author (s)</b>	<b>Title</b>	<b>Year</b>	<b>Township</b>	<b>Type</b>
RP 2006-04	DAVID, J, DION, C	DATATIONS U-PB EFFECTUEES DANS LA SOUS-PROVINCE DE L'ABITIBI A LA SUITE DES TRAVAUX DE 2004-2005	2006		ANALYSES, GEOCHRONOLOGIE
RP 2006-04(A)	DAVID, J, DION, C	U-PB AGE DATING CARRIED OUT IN THE ABITIBI SUBPROVINCE, 2004-2005 PROJECTS	2006		ANALYSES
RP 2006-08	RHEAUME, P, BANDYAYERA, D	REVISION STRATIGRAPHIQUE DE LA CEINTURE D'URBAN-BARRY	2007		COMPILATION
RP 2006-08(A)	RHEAUME, P, BANDYAYERA, D	STRATIGRAPHIC REVISION OF THE URBAN-BARRY BELT	2007		COMPILATION
RP 2009-04	LEGAULT, M, LALONDE, A E	DISCRIMINATION DES SYENITES ASSOCIEES AUX GISEMENTS AURIFERES DE LA SOUS-PROVINCE DE L'ABITIBI, QUEBEC, CANADA	2009		COMPILATION
RP 2009-04(A)	LEGAULT, M, LALONDE, A E	DISCRIMINATION OF SYENITES ASSOCIATED WITH GOLD DEPOSITS IN THE ABITIBI SUBPROVINCE, QUEBEC, CANADA	2009		COMPILATION
RP 2010-04	GOUTIER, J, MELANCON, M	COMPILATION GEOLOGIQUE DE LA SOUS-PROVINCE DE L'ABITIBI (VERSION PRELIMINAIRE)	2010		COMPILATION
RP 2010-04(A)	GOUTIER, J, MELANCON, M	GEOLOGICAL COMPILATION OF THE ABITIBI SUBPROVINCE (PRELIMINARY VERSION)	2011		COMPILATION
RP 593	CHARRE, R	GEOLOGIE DE LA REGION DU LAC LAGACE	1970	BUTEUX	LEVE GEOLOGIQUE, LOCALISATION DE SONDAGE, SEDIMENTS DE RUISSEAUX, GEOCH, TOURBIERE
RP 593(A)	CHARRE, R	PRELIMINARY REPORT, GEOLOGY OF THE LAKE LAGACE AREA	1970	BUTEUX	LEVE GEOLOGIQUE, LOCALISATION DE SONDAGE, SEDIMENTS DE RUISSEAUX, GEOCH, TOURBIERE
SI-32G-PPO-00F	DION, C	EVALUATION DU POTENTIEL MINERAL - SULFURES MASSIFS VOLCANOGENES (TYPE NORANDA) 32G - CHIBOUGAMAU	2000		COMPILATION
SIF 032G/03		CARTE DES DEPOTS DE SURFACE 032G/03 -DOCUMENT DE TRAVAIL -	1989	MACHAULT	GEOLOGIE DES DEPOTS MEUBLES

March 2012

## **Annexe II**

### **Certificates of ALS-Chemex**

#### **NOTE :**

**Samples 3291, 3369 and 3483 are not part of this report**