

Inventec Corporation and Subsidiaries

2016 Third Quarter Investor Conference



自主創新
Rapid Innovation



綠能環保
Sustainable Energy



雲端應用
Cloud Solutions



移動生活
Mobile Lifestyle



新興市場
Emerging Markets

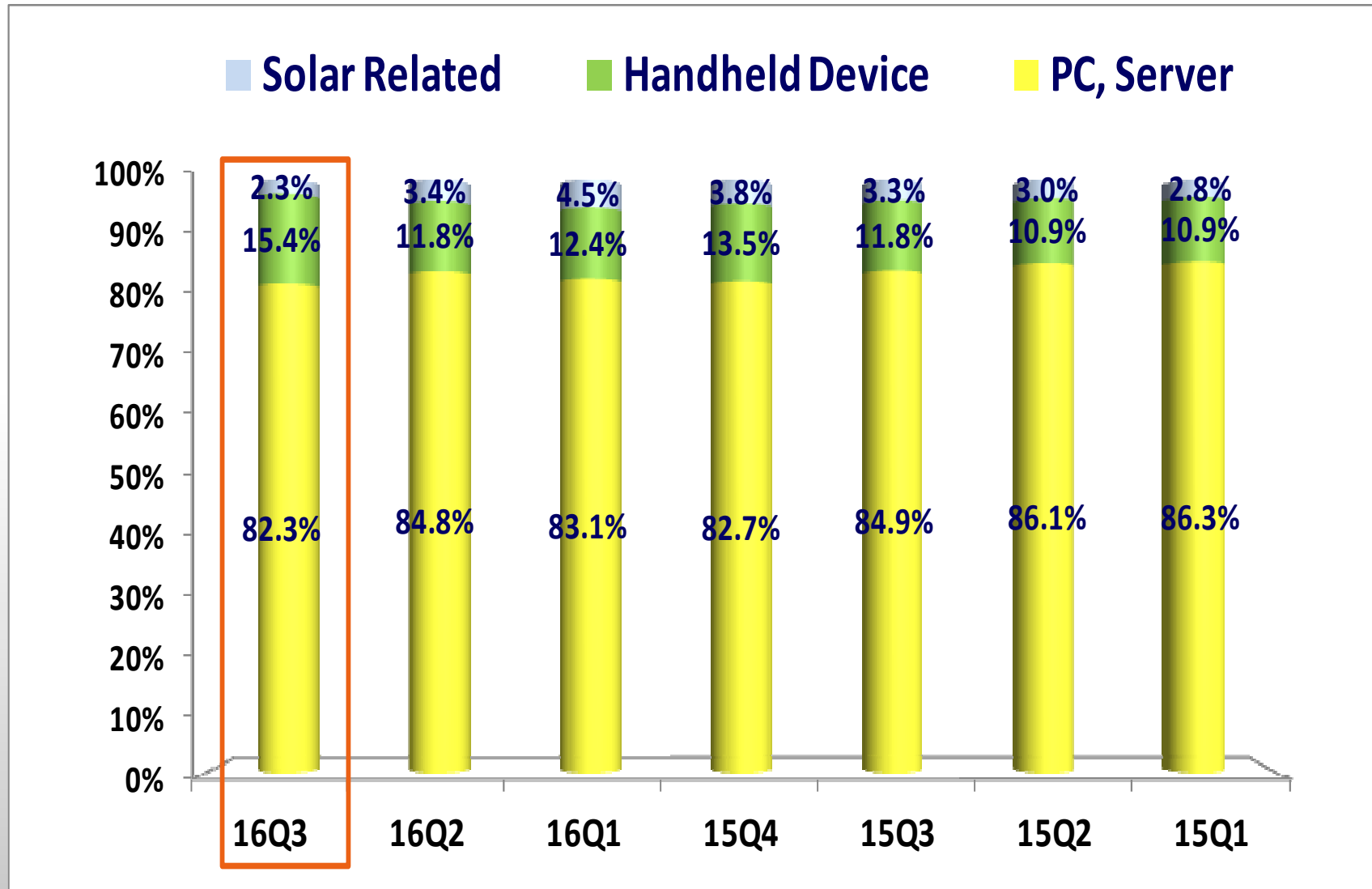
Consolidated Statements of Comprehensive Income

NT\$ Million	2016 Q1~Q3		2015 Q1~Q3		YoY %
Sales Revenue	315,348	100.0%	285,418	100.0%	10%
Gross Profit	17,538	5.6%	15,928	5.6%	10%
Operating Expense	11,706	3.8%	11,847	4.2%	-1%
Operating Profit	5,832	1.8%	4,081	1.4%	43%
Profit Before Income Tax	4,828	1.5%	5,971	2.1%	-19%
Profit for the Period	3,346	1.1%	4,106	1.4%	-19%
Total Comprehensive Income	1,329	0.4%	4,231	1.5%	-69%
<u>Profit Attributable to</u>					
Owners of the Parent	3,859	1.3%	4,567	1.6%	
Non-Controlling Interest	(513)	-0.2%	(461)	-0.2%	
<u>Total Comprehensive Income</u>					
<u>Attributable to</u>					
Owners of the Parent	1,851	0.6%	4,689	1.7%	
Non-Controlling Interest	(522)	-0.2%	(458)	-0.2%	
EPS (NT\$)	1.08		1.27		

Consolidated Statements of Comprehensive Income

NT\$ Million	2016 Q3		2016 Q2			2015 Q3		YoY %
					QoQ %			
Sales Revenue	111,654	100.0%	108,331	100.0%	3%	105,423	100.0%	6%
Gross Profit	5,891	5.3%	6,001	5.5%	-2%	5,603	5.3%	5%
Operating Expense	4,010	3.6%	3,916	3.6%	2%	4,247	4.0%	-6%
Operating Profit	1,881	1.7%	2,085	1.9%	-10%	1,356	1.3%	39%
Profit Before Income Tax	1,115	1.0%	1,829	1.7%	-39%	2,815	2.7%	-60%
Profit for the Period	677	0.6%	1,304	1.2%	-48%	1,891	1.8%	-64%
Total Comprehensive Income	(296)	-0.3%	600	0.6%	-149%	2,540	2.4%	-112%
<u>Profit Attributable to</u>								
Owners of the Parent	1,213	1.1%	1,414	1.3%		1,943	1.8%	
Non-Controlling Interest	(536)	-0.5%	(110)	-0.1%		(52)	0.0%	
<u>Total Comprehensive Income</u>								
<u>Attributable to</u>								
Owners of the Parent	245	0.2%	715	0.7%		2,590	2.4%	
Non-Controlling Interest	(541)	-0.5%	(115)	-0.1%		(50)	0.0%	
EPS (NT\$)	0.34		0.40			0.54		

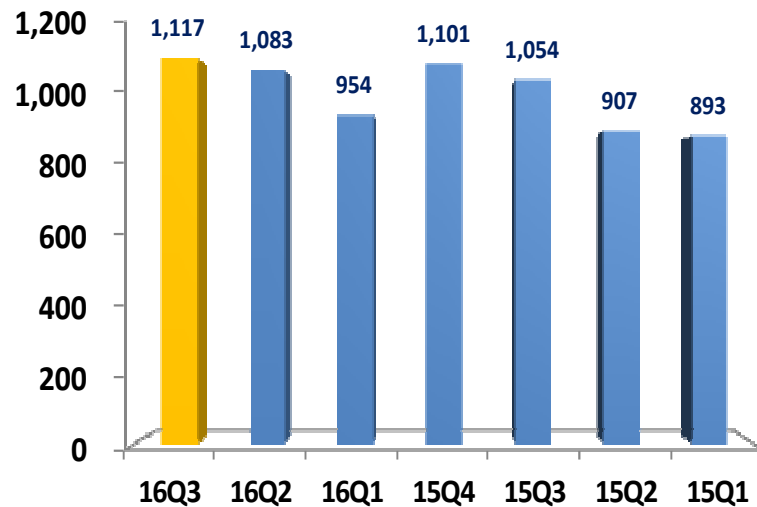
Consolidated Sales Revenue



Financial Trend Analysis

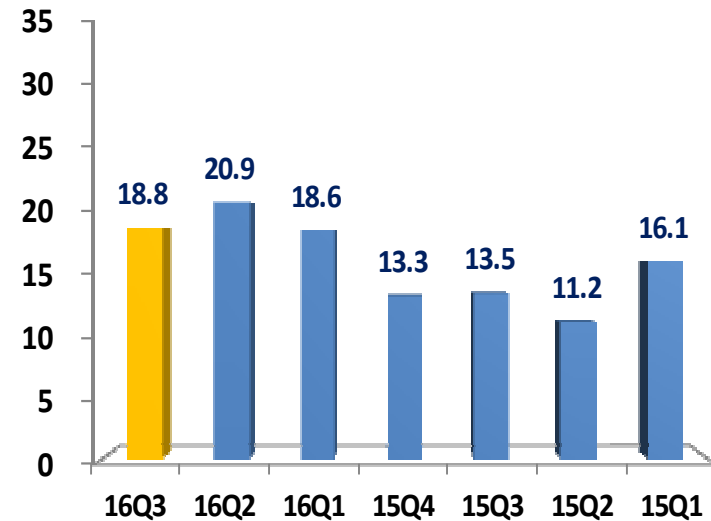
Sales Revenue

Unit: NT\$ one hundred million



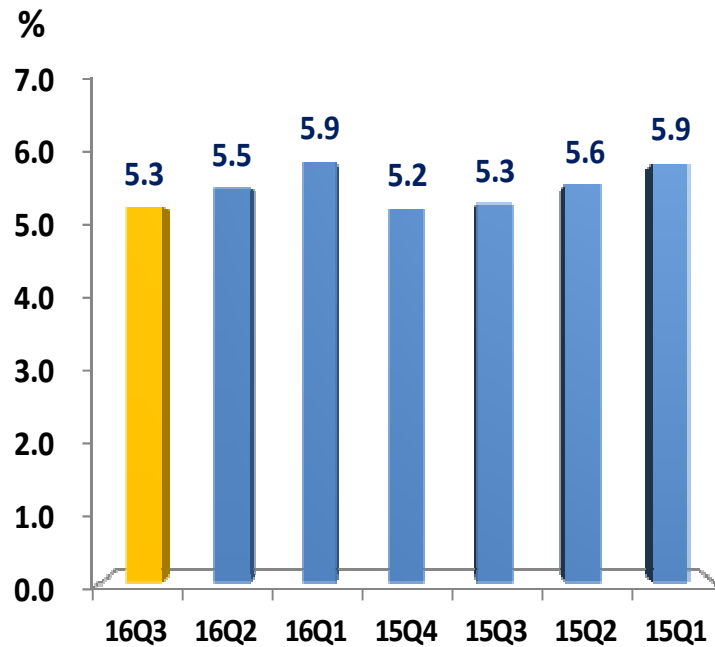
Operating Profit

Unit: NT\$ one hundred million

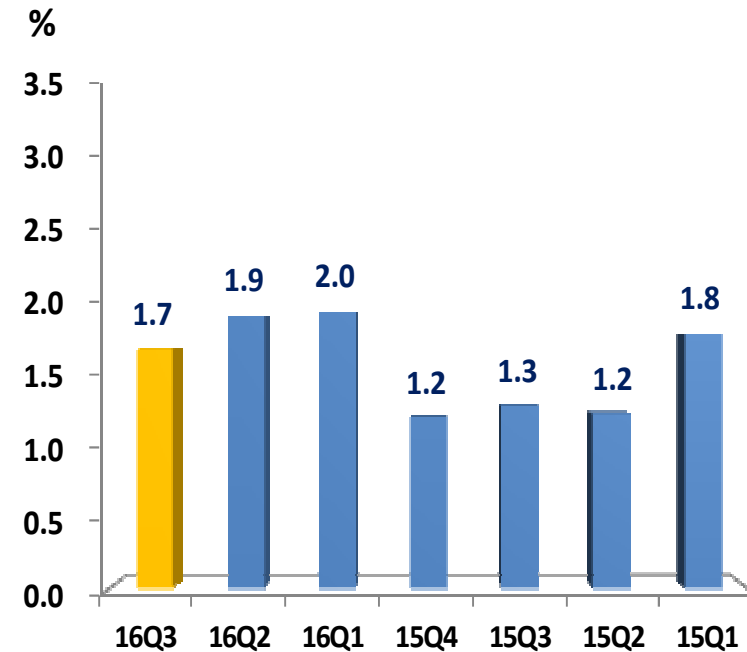


Financial Trend Analysis

Gross Profit Margin



Operating Profit Margin



Non-Operating Income and Expense

NT\$ Million	2016 Q3	2015 Q3	2016 Q1~Q3	2015 Q1~Q3
Other Income	217	559	774	1,694
Other Gain (Loss)	42	925	408	1,210
Foreign Exchange Gain (Loss)	(821)	390	(1,780)	(182)
Finance Cost	(189)	(396)	(383)	(782)
Share of the Profit or Loss of Associates and JV Accounted for Using the Equity Method	(15)	(20)	(22)	(50)
Total Non-Operating Income and Expense	<u>(766)</u>	<u>1,458</u>	<u>(1,003)</u>	<u>1,890</u>

Consolidated Balance Sheets

NT\$ Million	2016/9/30	2015/12/31	2015/9/30
Cash	19,483	37,124	29,277
Accounts Receivable	67,756	60,364	65,571
Inventories	35,198	28,960	37,437
Other Current Assets	4,863	7,130	13,374
Non-Current Assets	45,914	42,169	44,197
Total Assets	173,214	175,747	189,856
Current Liabilities	106,353	98,772	122,388
Non-Current Liabilities	7,682	14,076	5,318
Total Liabilities	114,035	112,848	127,706
Total Equity	59,179	62,899	62,150

Financial Ratio Analysis

%	2016/9/30	2015/12/31	2015/9/30
Current Ratio	119.70%	135.24%	119.01%
Quick Ratio	86.15%	104.37%	87.22%
Debt Ratio	65.83%	64.21%	67.26%

<http://www.inventec.com>

iec@inventec.com



THANK YOU!

Questions and Answers