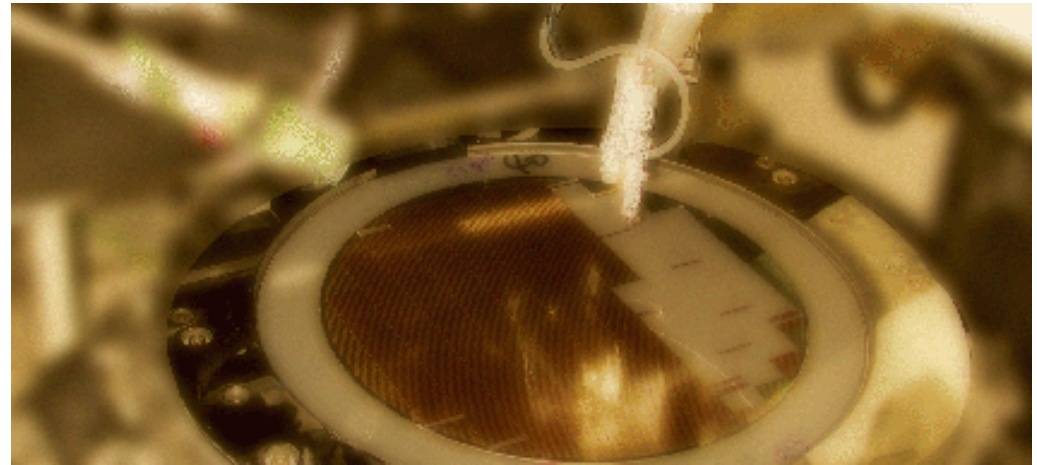




KYEC

Your Best Test Partner



The Testing

Industry Benchmark

- IC Test Service
- Burn-In Service
- Backend Support
- Pre- Assembly
- Turnkey Operation

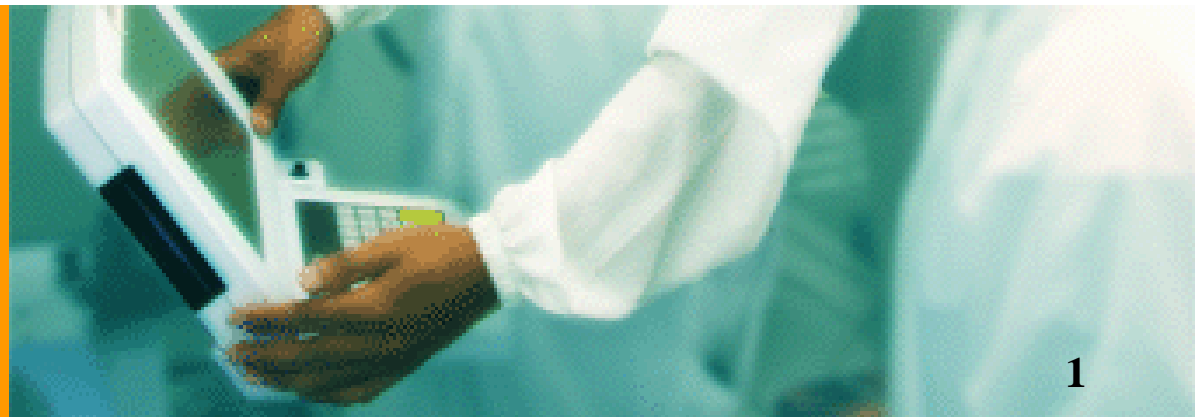


Table of Contents

- **Overview**
- **KYECC Facilities**
- **Available Services**
- **Testing Platforms**
- **KYECC E320 Test Solution**
- **Quarterly Revenue & Growth Rate**
- **Quarterly GM**
- **3Q/13 Operations Result Summary (Consolidated)**
- **3Q/13 Income Statement QoQ Comparison (Consolidated)**
- **3Q/13 Income Statement YoY Comparison (Consolidated)**
- **Balance Sheet Highlight – 2013/9/30 (Consolidated)**
- **Sales Breakdown by Geography**
- **Sales Breakdown by Process**
- **Sales Breakdown by Product**

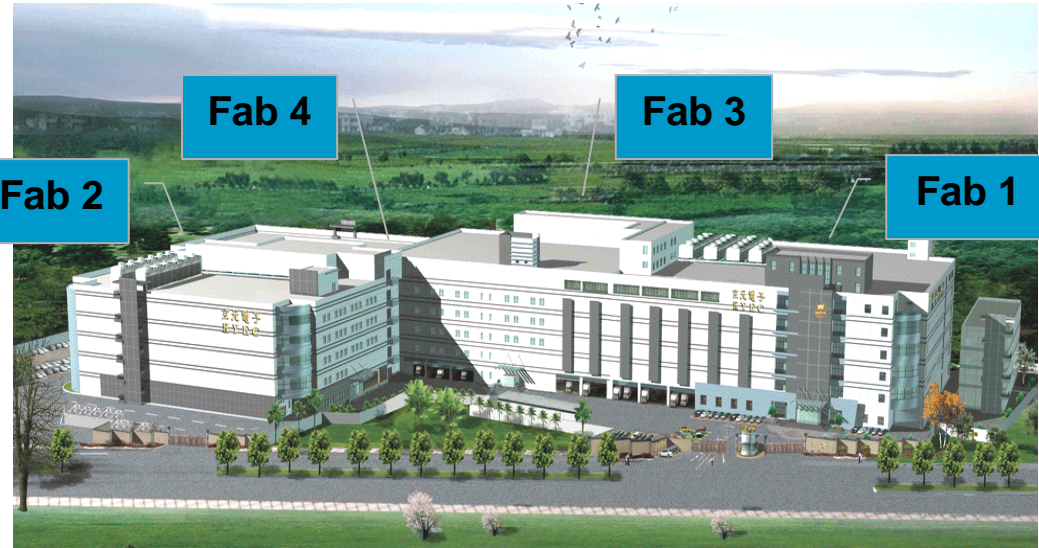
- **Company Founded** May 1, 1987
- **Paid-In Capital** NT\$ 11.9 Billion (Nov. 2013)
- **Factories** Hsin-Chu (HQ) / Chu-Nan (Factories)
- **Sales Offices** U.S.A / Japan / Singapore (S.E.A.&EU)
- **Total Floor Space** 3,350,000 Square ft (Dec. 31,2010)
- **Total Clean Room Space** 2,000,000 Square ft (Dec. 31,2010)
- **Employees Numbers** 4,200
- **IPO Listed in TSE** May 9, 2001



KYECC

The leading industry solutions

KYECC Facilities 廠房分佈

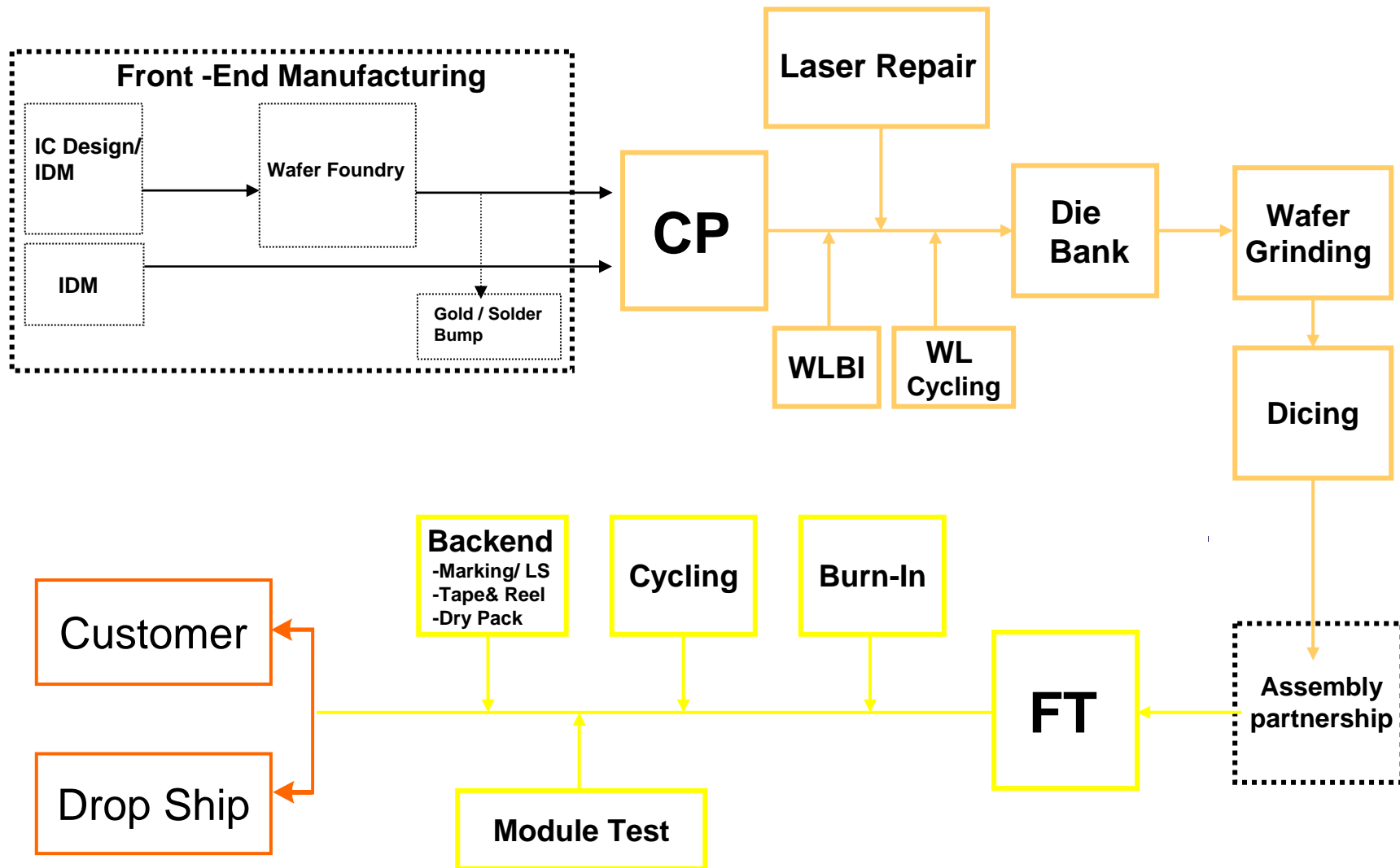


■ Hsin-Chu Headquarters ■ Chu-Nan Plants ■ Tong-Luo Plants

		Hsin-Chu Headquarters	Chu-Nan Fab 1	Chu-Nan Fab 2	Chu-Nan Fab 3	Chu-Nan Fab 4	Tong-Luo 2014Q1 open house
Total Floor Space (Square ft)		300,000	1,100,000	550,000	700,000	700,000	650,000
Clean Room	Space (ft)	100,000	450,000	250,000	650,000	550,000	300,000
	Cleanness	Class 10 /100/1000/10K					



Available Services 服務項目





	Memory	Logic / Mixed-Signal	CIS/CCD	LCD Driver	RF / Wireless	SOC
Advantest	T5571P / 81H / 85 / 88 T5371 / 72 / 77S T5382A / T5771 T5225 / 65 / 66	T6672 / T6673 T6575 / T6577 T6683		T6331 T6371 T6372 T6373	T2000-RF	T2000
Agilent (Verigy)	V1200 / V2000 V3000 / V4400	HP93K / HP94K / HP83K	HP93KIP/94KIP		HP93KPSRF	93K/PS
LTX-Credence	Kalos / XW Kalos II / HEX Pkalos / Pkalos II	Duo/Quartet SCX12, ITS9KEXA/CV ITS3KEXA/ ASL1K/ASL3K-MS Sapphire/D10			ASL3K-RF Fusion-CX Fusion-MX	Sapphire/ D10/ Fusion-MX DiamondX
Teradyne		Catalyst/J750/ J750EX/iFlex/ Ultra Flex	IP750 IP750EMP		Flex-RF Catalyst-RF Ultra Flex-RF	J750EX, J750, iFlex, Ultra Flex, Catalyst
Yokogawa				TS6700 ST6730		
KYECC		E320BD	I1000, I2000 I3000			
Nextest	M1 / M2					

Total Testers Over 2350 Sets And Continuously Growing

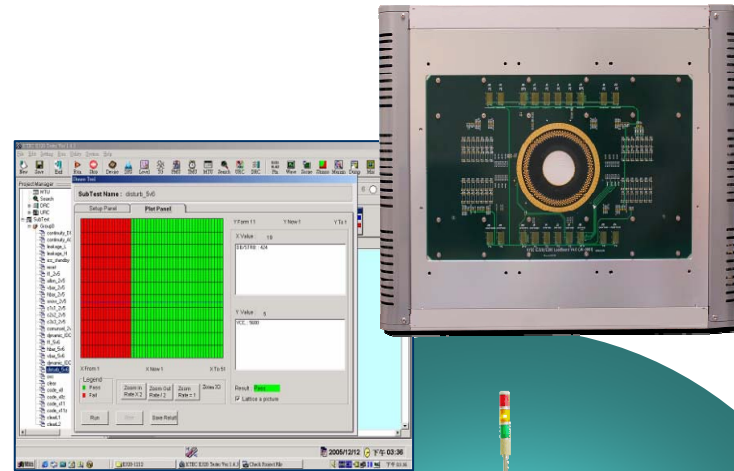


KYEC

The leading country connectors

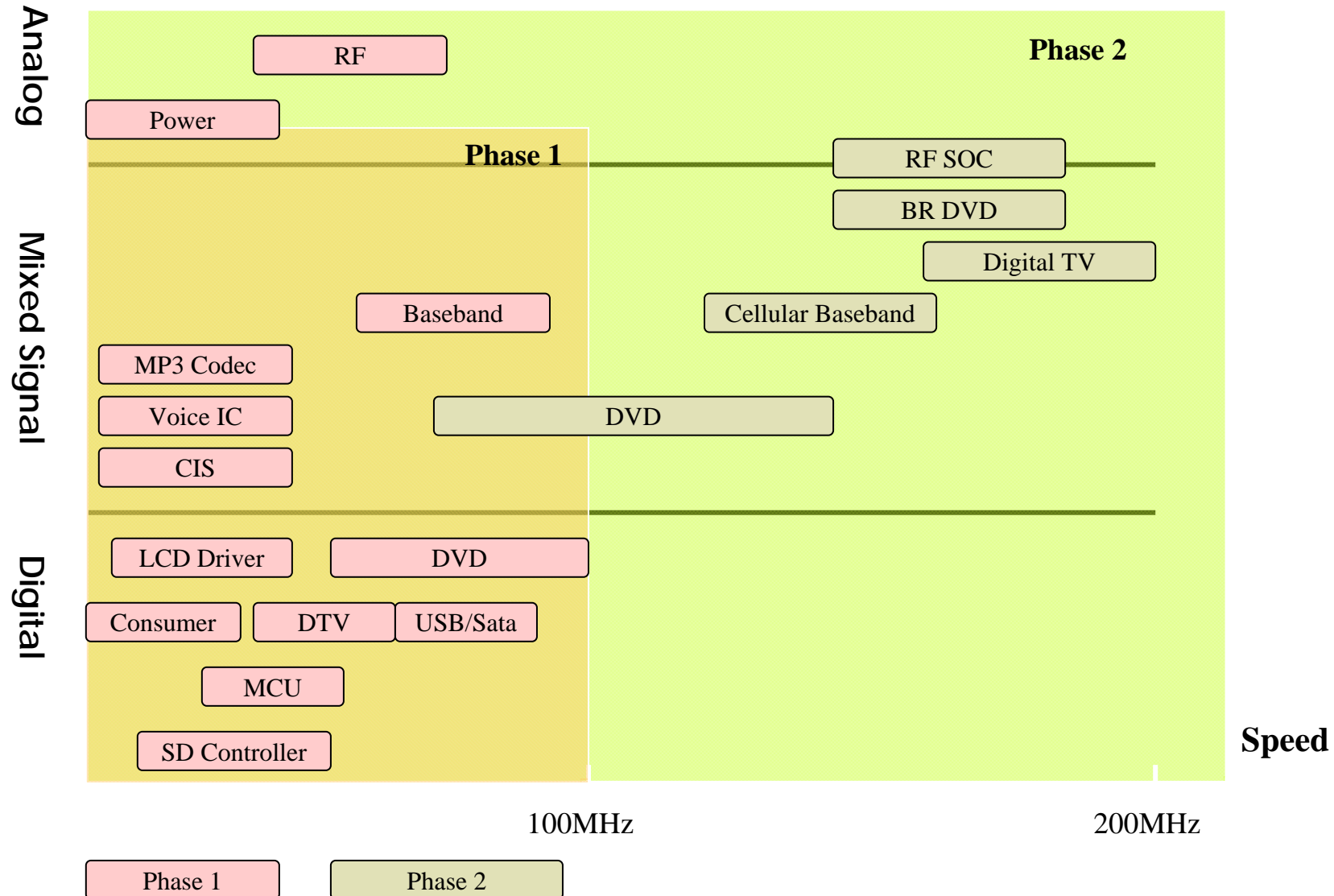
KYEC E320 Test Solution

- A cost effective, high throughput logical test solution
- Open architecture, easy to expand and maintain
- 200MHz architecture (since 2H11)
- Cost efficiency/ Multi site test
- Easy to test program development
- Small foot print: L820 x W660 x H400





E320 Product Segments

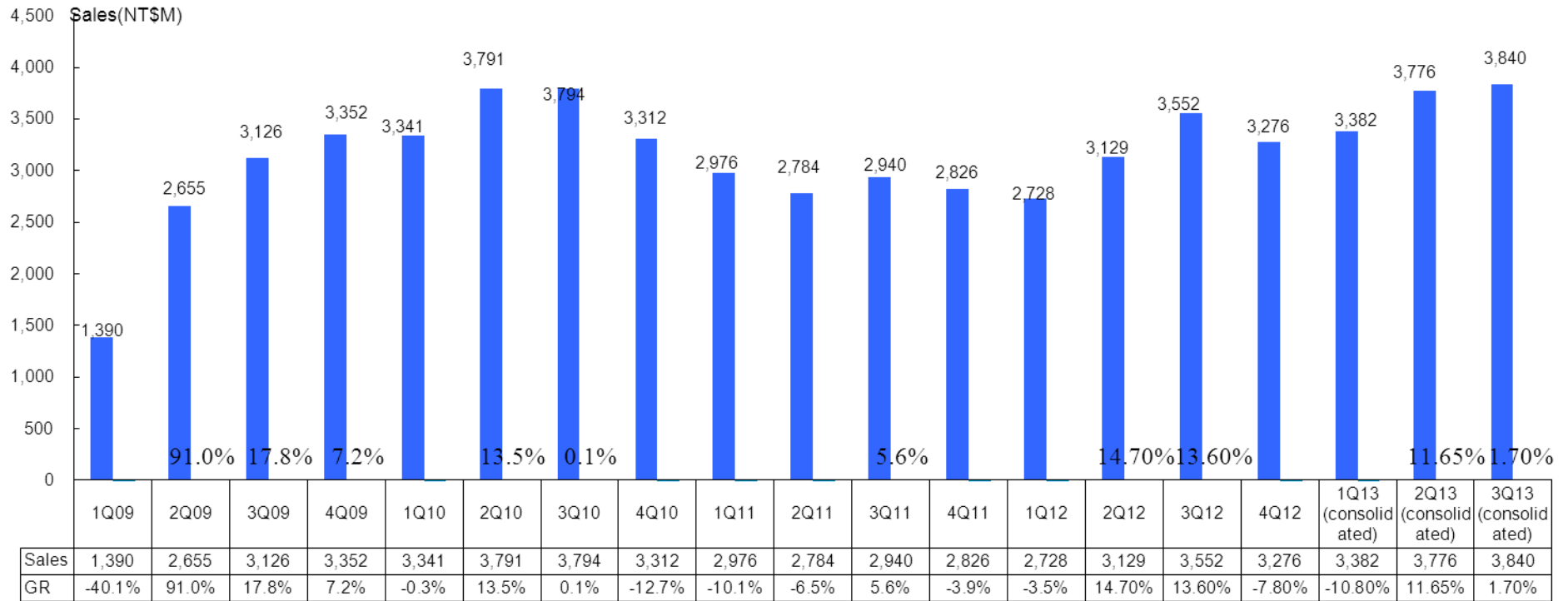




KYEC

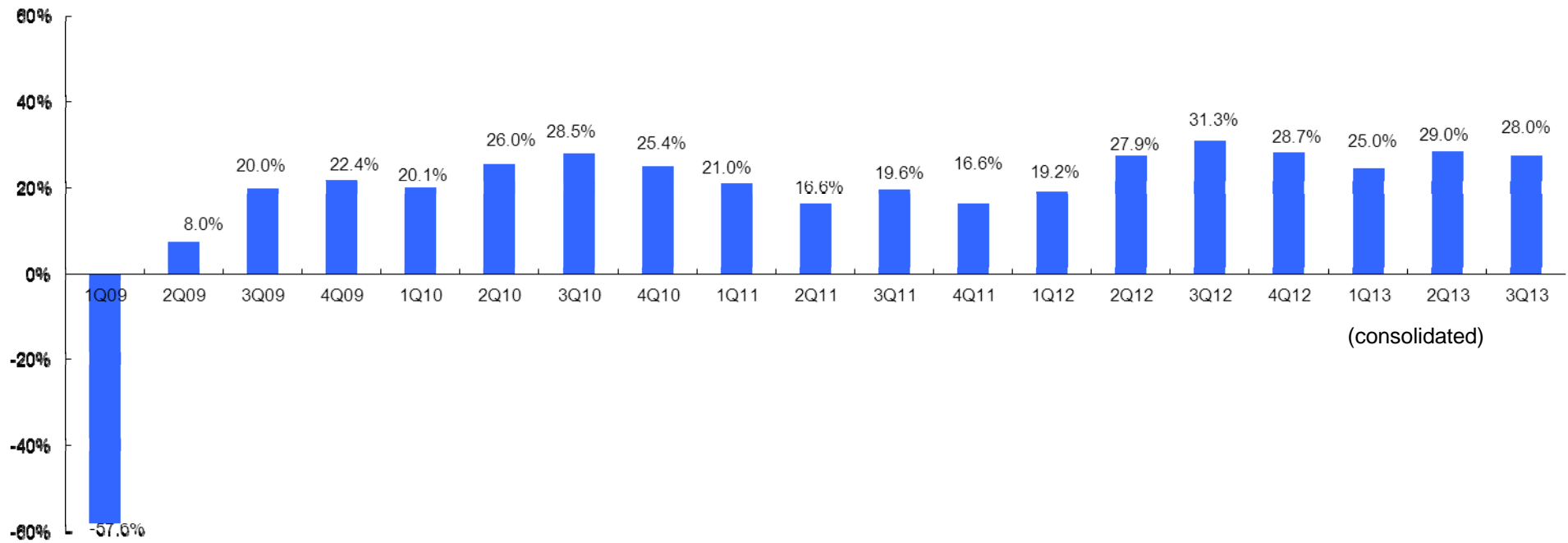
The leading country connector

Quarterly Revenue & Growth Rate





Quarterly GM



2013年第三季營運結果摘要

3Q/13 Operating Results Summary (Consolidated)

單位:新台幣百萬元(NT\$M)	13年第三季	13年第二季	12年第三季
項目	3Q/13	2Q/13	3Q/12
營業收入淨額 (Net Sales)	3,839.6	3,775.9	4051.0
本期淨利 (Net Income)	506.8	570.5	629.9
每股盈餘(元) (EPS \$NT)	0.43	0.48	0.54
現金及約當現金 (cash & cash Equivalents)	8,178.8	8,228.2	6,511.9
總資產(Total Assets)	36,622.1	37,321.8	35,856.0
股東權益 (Shareholders' equity)	21,264.9	20,794.7	20,496.6
折舊費用(Depreciation)	1,157.6	1,187.0	1,268.5
資本支出(Capex)	1,337.5	1,598.2	1,389.3
未計利息稅額折舊及攤銷前利益 (EBITDA)	1,835.9	1,919.6	2,073.8

**KYEC**

損益表 - 2013年第三季 vs. 2013年第二季

3Q/13 Income Statement QoQ Comparison (Consolidated)

單位:新台幣百萬元(NT\$M)	3Q/13		2Q/13		QoQ
項目		%		%	%
營業收入淨額(Net Sales)	3,839.6	100	3,775.9	100	1.7
銷貨成本(COGS)	<u>(2,758.2)</u>	<u>(72)</u>	<u>(2,682.4)</u>	<u>(71)</u>	2.8
營業毛利淨額(GP)	1,081.4	28	1,093.5	29	(1.1)
營業費用(OP Exp.)	<u>(437.4)</u>	<u>(10)</u>	<u>(439.0)</u>	<u>(12)</u>	(0.4)
營業淨利(OP Income)	644.0	18	654.5	17	(1.6)
營業外收入及支出 (Non-OP Income & Exp.)	(5.7)	(1)	36.0	1	(84.1)
稅前淨利(EBT)	638.3	17	690.5	18	(7.6)
所得稅(費用)利益((Tax)benefit)	<u>(131.4)</u>	<u>(4)</u>	<u>(120.0)</u>	<u>(3)</u>	9.5
本期淨利(Net Income)	<u>506.8</u>	<u>13</u>	<u>570.5</u>	<u>15</u>	(11.2)
普通股每股盈餘(元)(EPS NT\$)	0.43		0.48		
加權平均流通在外股數(仟股) Weighted Average outstanding shares('k)		1,187,966		1,187,752	

**KYEC****損益表 - 2013年第三季 vs. 2012年第三季****3Q/13 Income Statement YoY Comparison (Consolidated)**

單位:新台幣百萬元(NT\$M)	3Q/13		3Q/12		YoY
項目		%		%	%
營業收入淨額(Net Sales)	3,839.6	100	4,051.0	100	(5.2)
銷貨成本(COGS)	(2,758.2)	(72)	(2,886.0)	(71)	(4.4)
營業毛利淨額(GP)	1,081.4	28	1,165.1	29	(7.2)
營業費用(OP Exp.)	(437.4)	(10)	(454.0)	(11)	(3.6)
營業淨利(OP Income)	644.0	18	711.1	18	(9.4)
營業外收入及支出 (Non-OP Income & Exp.)	(5.7)	(1)	48.8	1	(88.3)
稅前淨利(EBT)	638.3	17	759.9	19	(16.0)
所得稅(費用)利益((Tax)benefit)	(131.4)	(4)	(130.0)	(3)	1.1
本期淨利(Net Income)	506.8	13	629.9	(16)	(19.5)
普通股每股盈餘(元)(EPS NT\$)	0.43		0.54		
加權平均流通在外股數(仟股) Weighted Average outstanding shares('K)		1,187,966		1,175,045	

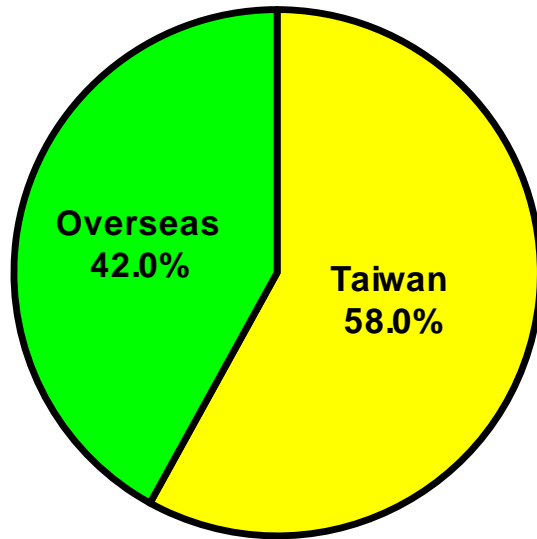
簡要資產負債表- 2013 年9 月 30 日

Balance Sheet Highlight – Sep. 13 vs. Jun. 13 (Consolidated)

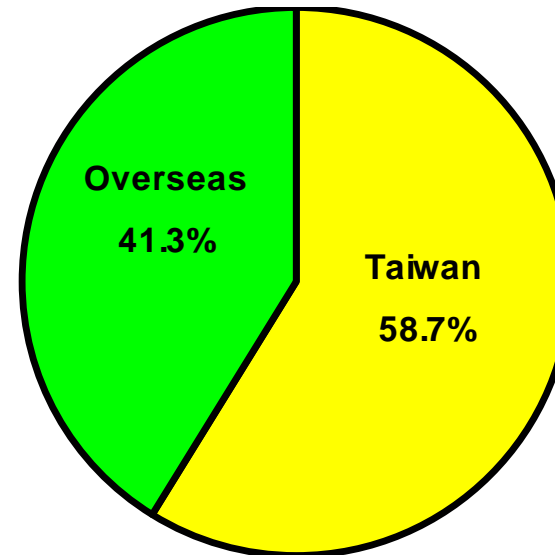
單位:新台幣百萬元(NT\$M)	Sep. 13		Jun. 13	
項目		%		%
現金及約當現金(Cash & Cash Equivalents)	8,178.8	22	8,228.2	22
長期投資(LT Investments)	1,512.6	4	1,571.4	4
固定資產(Fixed Assets)	19,822.6	54	19,875.1	53
總資產(Total Assets)	36,622.1	100	37,321.8	100
長期借款(LT debts)	10,379.6	28	10,394.2	28
一年到期之長期借款 (LT debts payable within a year)	502.8	1	569.2	1
股東權益(Shareholders' Equity)	21,264.9	58	20,794.7	56



Sales Breakdown by Geography



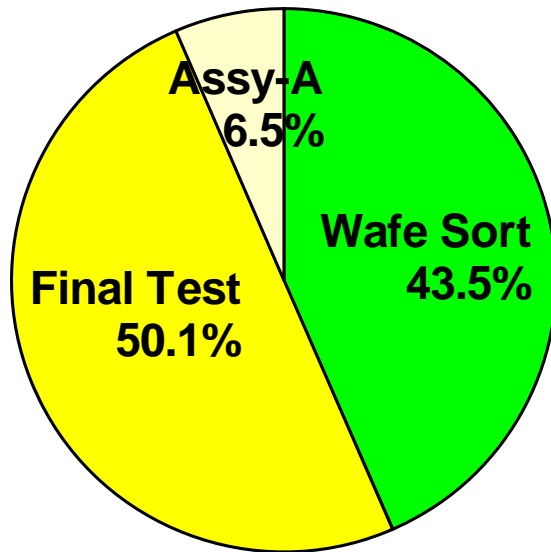
3Q13



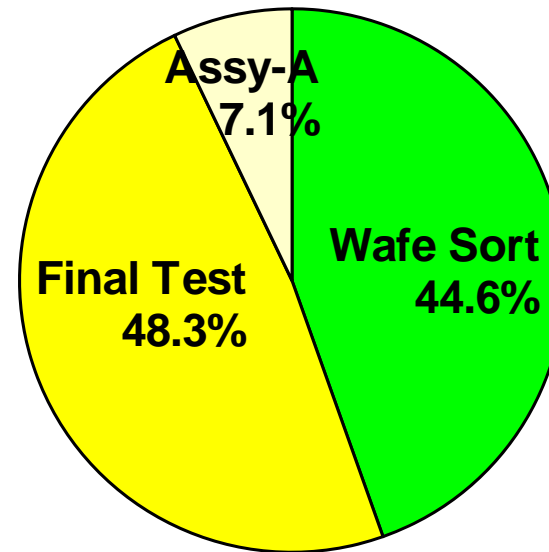
2Q13



Sales Breakdown by Process



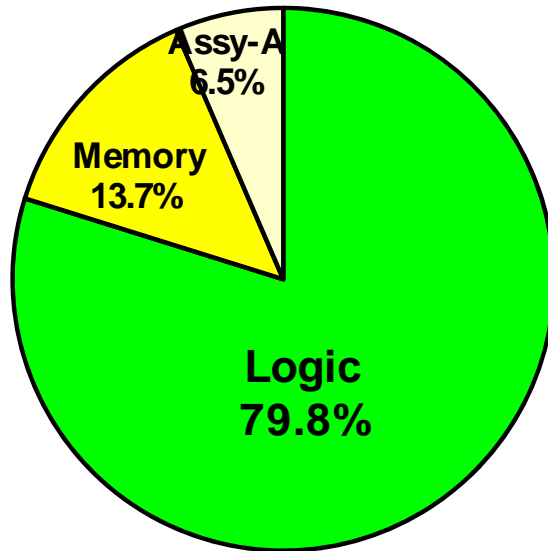
3Q13



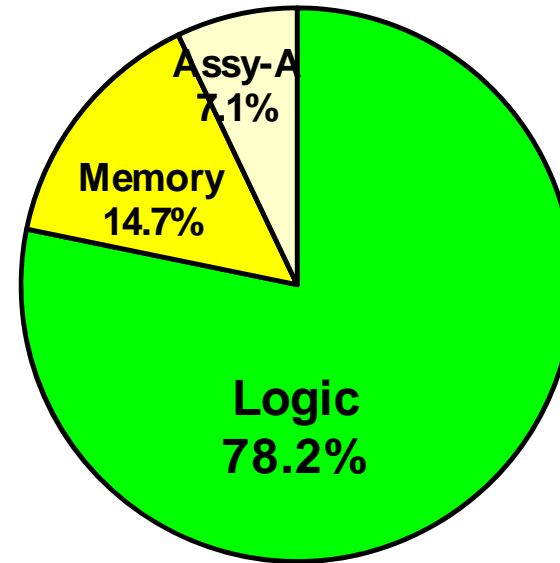
2Q13



Sales Breakdown by Product



3Q13



2Q13



JUST KYEC

The Testing Industry Benchmark

-
- Headquarters : No.81,Sec.2,Gongdaowu Rd.,Hsin-Chu 300,Taiwan,R.O.C. TEL:886-3-5751888 FAX:886-3-5753866
 - Chu-Nan Factory : No.118,Chung -Hua Rd.,Chu-Nan,Miao-Li 350,Taiwan,R.O.C. TEL:886-37-595666 FAX:886-37-595168
 - USA sales Office : 1735 Technology Dr.#270, San Jose,CA95110 TEL:408 -452 -7680 FAX:408- 452-7689
 - Japan sales Office : 3-8-33 Momochihama, Sawara-ku, Fukuoka 814-0001 Japan TEL:81-80-5083-2373 FAX:81-92-821-6955
 - EU / S.E.A. sales Office : 583 Orchard Road, #16-01/ 17-01 Forum, Singapore 238 884 TEL:65-6737-6981 FAX:65-6737-6810