



Investor Conference

(Stock Code : 2855)

August 23, 2017

www.pscnet.com.tw

www.pscnet.com.tw



Disclaimer



- This document may contain forward-looking statements, including but not limited to statements that address activities, events or developments that the Company expects or anticipates to occur in the future. All statements are made according to the projection of future operation and various political, economic and market factors beyond the Company's control. Therefore, the actual results may differ materially from those contained in the forward-looking statements.
- The financial information provided in the document has not fully been reviewed by accountant.
- This document is not and cannot be construed as an offer to purchase or sell securities or other financial products or solicitation of an offer.
- All texts, images, illustrations and other material are subject to copyright held by President Securities Corp. Any reproduction, dissemination, transmission, and forwarding is strictly prohibited without the express written permission of President Securities Corp.



Agenda



Business Synopsis

Operating Achievements



Business Synopsis

Company Profile

President Securities Corp. 2855



As of the end of June, 2017.

Date of Incorporation

Dec. 17, **1988**

Number of Affiliated Companies

5 in Taiwan and **2** overseas

Capital

NTD **13.36** Billion

Number of Branches

36

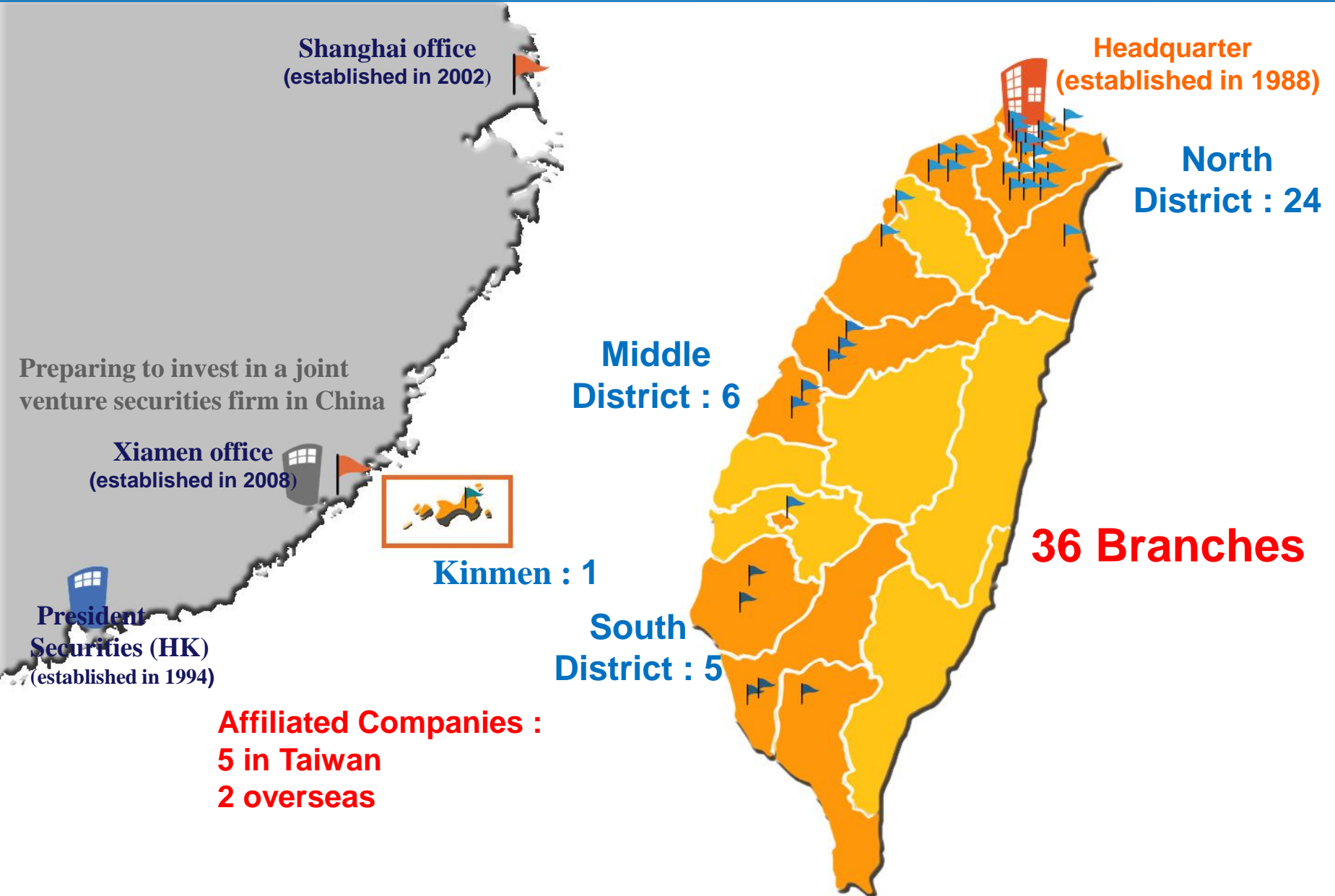
Number of Employees

1,492

Products and Services

Brokerage, Proprietary Trading, Underwriting, Fixed Income Dealing, Financial Products, Shareholder Services, Wealth Management & Trust, Offshore Securities Units

Service Location



Capital Structure

Unit : Billion NTD

16

0

Established
1.4b
Initial capital investment

A rapid growth that brought our capital up to over 10 billion within 10 years

Growth



10.1

Stability



Surpassing and keeping our capital at a 13 billion level.

13.2

Breakthrough

13.9

Capital increase by earning to develop our core businesses.

Note: Stock dividend 0.41 at the total amount of 0.55E has been approved at the shareholder's meeting in June, 2017; Capital Increase by Earning will be dated at August.

1988

1998

2008

June, 2017

Long-term Business Development

Services : Brokerage, Proprietary Trading, Futures Proprietary Shareholder Services, Fixed Income Dealing, Financial Products, Wealth Management & Trust, Underwriting

Brokerage

- ✓ Professional research team and high service quality to gain institutional and foreign investors.
- ✓ Diversified products and e-trading platform.

Proprietary Trading

- ✓ Developing overseas products and overseas investment businesses.
- ✓ Fast strategy adjustment through risk management system.

Futures Proprietary

- ✓ Reinforcing capability for in-time strategical quantitative analysis and build up analysis for overseas return-risk decision.
- ✓ Automatizing ordering module.

Shareholder Services

- ✓ Providing diversified services for our clients and becoming a shareholder services division that also functioned as a wealth management advisor.

Fixed Income Dealing

- ✓ Building global database and foreign bond trading platform.
- ✓ Developing structural products to meet different risk appetite for different clients.

Financial Products

- ✓ Providing customize products.
- ✓ Deploying risk management system for derivatives.
- ✓ Applying for OSU related foreign exchange derivative businesses.

Wealth Management & Trust

- ✓ Building a "Domestic wealth management platform for Taiwan" via trust.
- ✓ Creating a "cross strait feature" business through OSU.

Underwriting

- ✓ Gaining private placement businesses and greater China investment bank businesses.

Performance on Sustainable Development in 2016

E ENVIRONMENTAL



Ratio of electronic transaction has exceeded **50%** in 2017

2015
45.05%

2016
49.71%



Waste paper reduction policies

Turning off all the lights for **an hour** on the earth day

Subscribing **100,000** kWh green power in 2017

Replacing low-efficient equipment

Cooperating with **GreenPeace** and promoting environmental campaign

CO₂ **1.3%** less than 2015

3,302,458 kilograms of carbon emission

S SOCIAL



Blood donation for **11** years, accumulated up to **2,971** bags

Donation to provide scholarships for accumulated up to **28.3** million

Industry-Academic cooperation for **9** consecutive years

Certification of Quality Breastfeeding Room

Certification of Healthy workplace

G GOVERNANCE



Corporate Governance Evaluation System **THE FIRST CLASS** (TWSE)

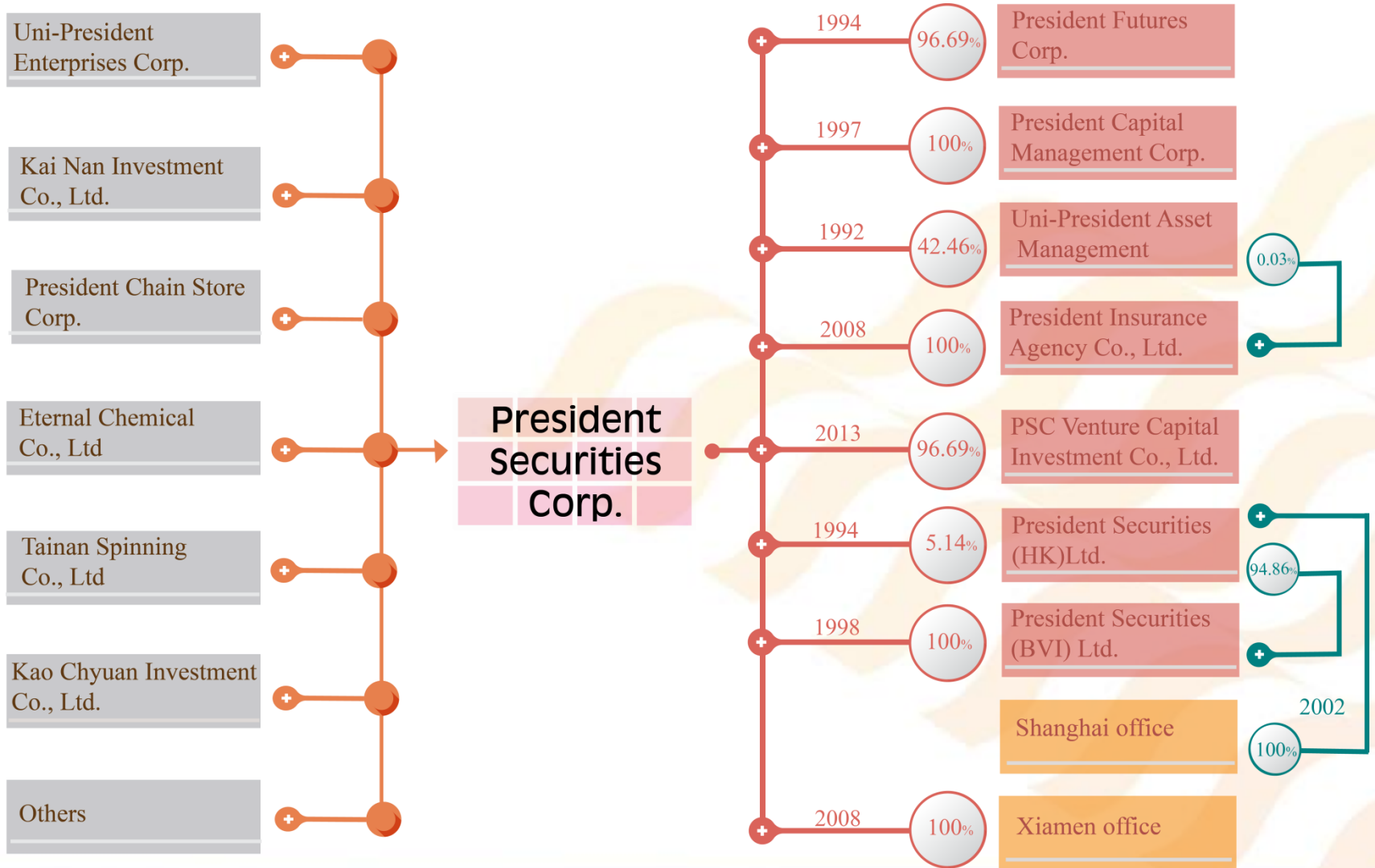
Information Disclosure and Transparency Ranking System **A++**

Net income **827** million in 2016

Securities Firms Risk Evaluation System **THE FIRST CLASS** (TPEX)

ROE 3.61%

Primary Shareholders and Affiliated Companies





Operating Achievements



Condensed Income Statements

The first half of 2017

Unit : Million NTD

Item	2017Q2	2016Q2
Revenues	2,992	1,602
Operating Expenditures	313	196
Operating Expenses	1,686	1,342
Operating Income	993	64
Other Incomes and Costs	201	270
Income Before Tax	1,194	334
Income Tax Expense	75	25
Net Income	1,119	309
Other Comprehensive Income	-108	-39
Total Comprehensive Income	1,011	270
EPS (NTD)	0.80	0.22

Condensed Balance Sheets

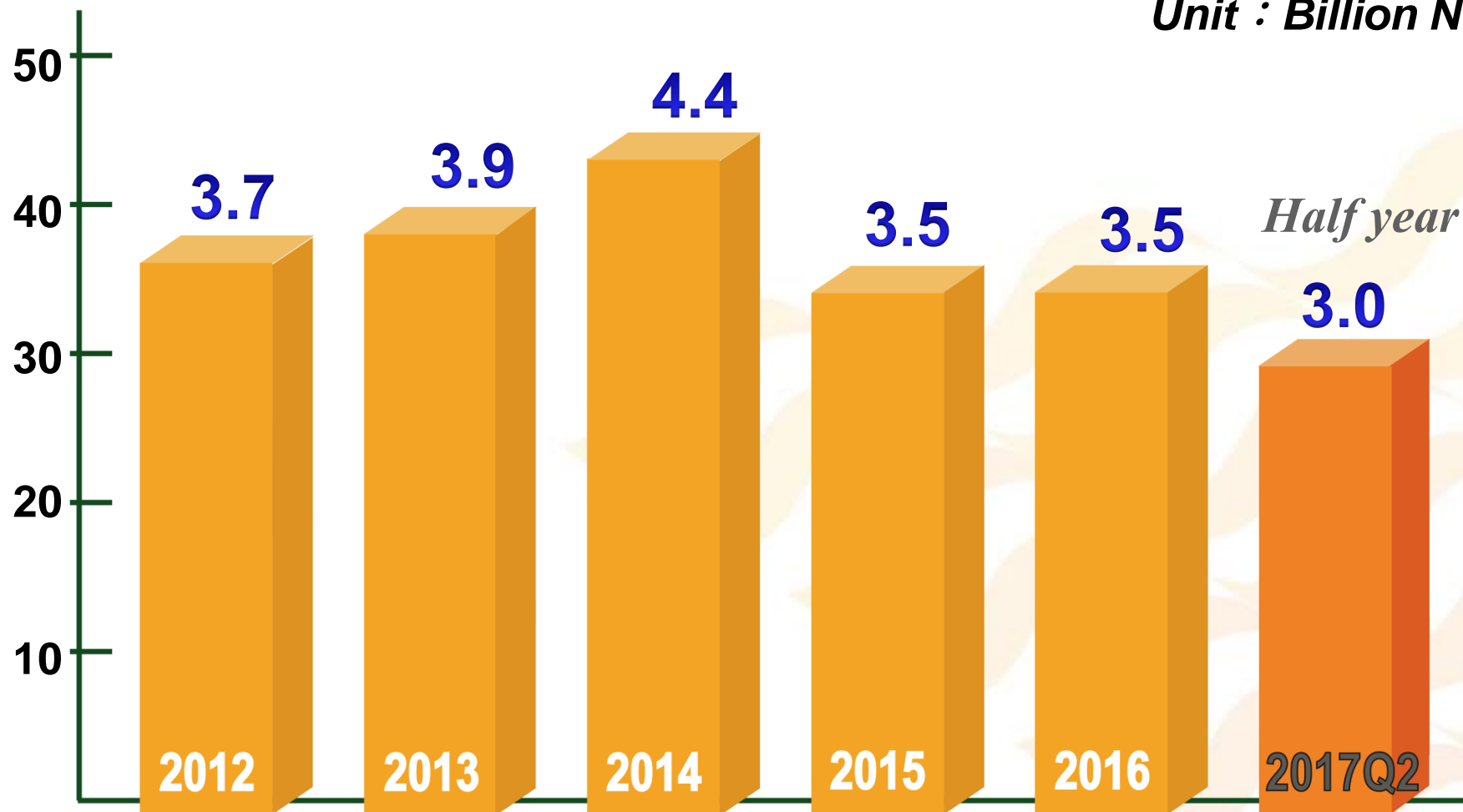
As of the end of June, 2017

Unit : Million NTD

Item	June 30, 2017	Dec. 31, 2016
Current Assets	65,233	63,516
Non-Current Assets	8,243	8,475
Total Assets	73,476	71,991
Current Liabilities	49,342	48,853
Non-Current Liabilities	42	57
Total Liabilities	49,384	48,910
Capital Common Stock	13,357	13,357
Other Equity	10,735	9,724
Total Equity	24,092	23,081
ROA	1.76%	1.51%
ROE	4.74%	3.61%

Revenue for 2017H1 and the latest 5 years

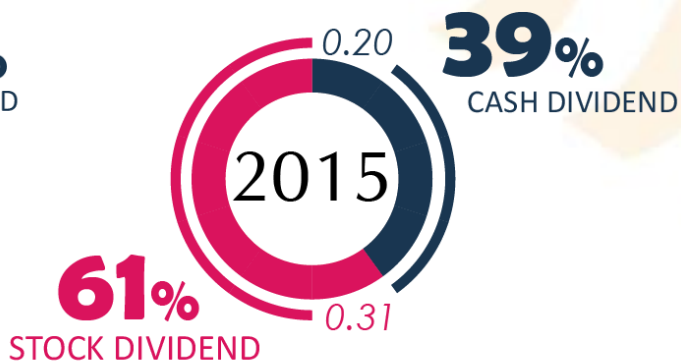
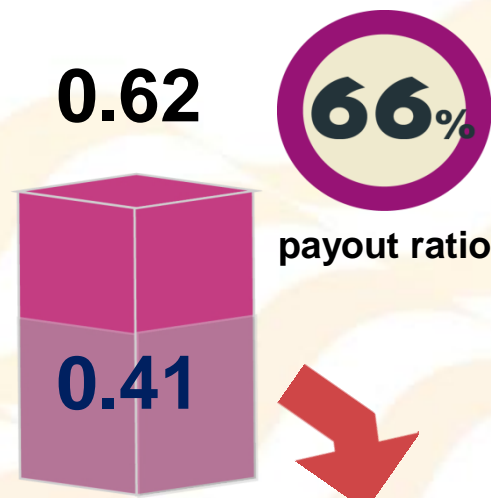
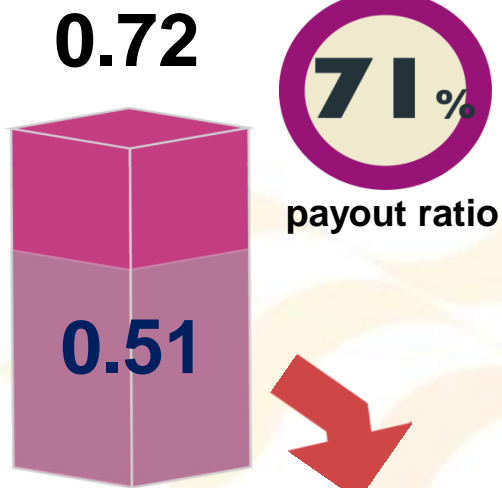
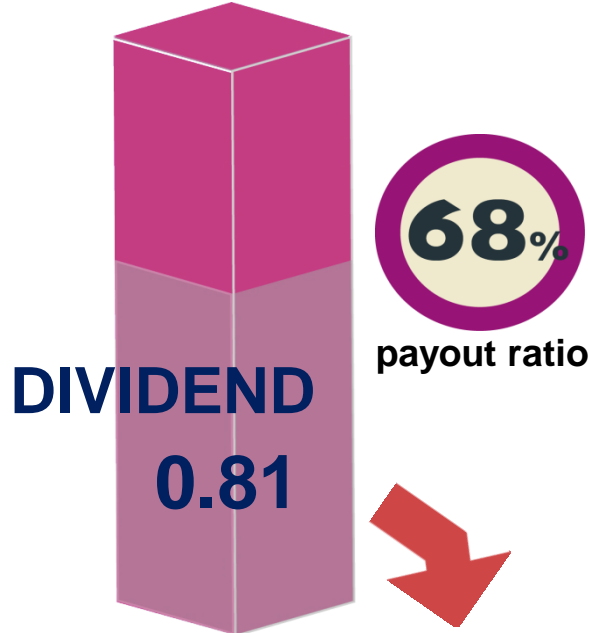
Unit : Billion NTD



Note : The International Financial Reporting Standards (IFRSs) was adopted by the Company starting 2013.

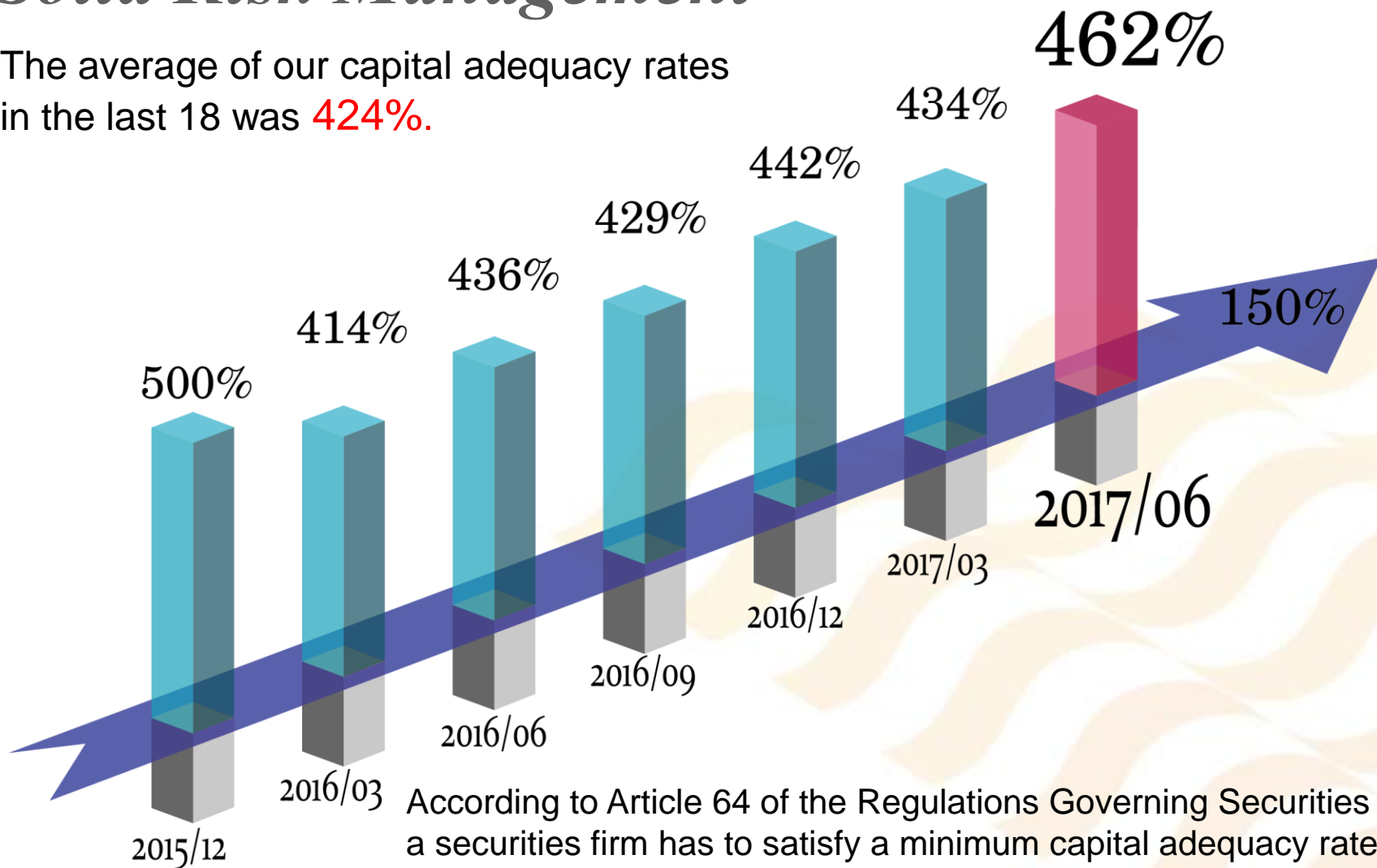
Stable payout ratio

EPS 1.2



Solid Risk Management

The average of our capital adequacy rates in the last 18 was **424%**.



According to Article 64 of the Regulations Governing Securities Firms, a securities firm has to satisfy a minimum capital adequacy rate of **150%** (200% in order to be permitted to operate in derivatives products). The company's capital adequacy rates are well above the minimum requirement.

Credit Ratings and the Information Disclosure & Corporate Governance Evaluation System



Well and Stable Ratings
in the last **10** year



Were awarded the highest ranking
In Information Disclosure
and Transparency Ranking System
for **7** consecutive years!!



Were awarded the highest ranking
in Corporate Governance Evaluation
System for **3** consecutive years!!

Roll of Honor



2016.10
*the Second TAIFEX
 Diamond Award in
 Trading Volume of
 Security*

2016.10
*the Second TAIFEX
 Diamond Award in
 Trading Volume
 Growth of Security.*

2016.10
*the Second TAIFEX
 Diamond Award in
 Trading Volume Growth
 of Futures Brokers.*

2016.11 
*No.2 in the 6th
 National Wealth
 Management
 Competition.*

2015~2017
*Corporate Social
 Responsibility Award*

*held by the
 Commonwealth
 magazine.*

Social Caring

2016.10
*“Sports Enterprise
 Certification Badge”
 from Sports
 Administration of
 Ministry of
 Education.*

Outstanding Business Performance

CSR 天下企業公民 與世界同步 為企業接軌國際
 Excellence in Corporate Social Responsibility 訂定競爭力新標準

Medium-sized Enterprises

Honor	Enterprises	Aggregate	Corporate Governance	Corporate Commitment	Social Engagement	Environmental Protection
1	Sinyi Realty Inc.	9.300	9.60	9.32	9.24	9.04
2	ATEN International Co., Ltd.	8.730	8.90	8.92	8.72	8.38
3	KD Holding Corporation	8.725	9.22	8.70	8.58	8.40
4	Planet Technology Corporation	8.680	8.76	8.96	8.82	8.18
5	AAEON Technology Inc.	8.520	8.28	8.40	8.88	8.52
6	ACTER CO.,LTD.	8.360	8.84	8.48	8.26	7.86
7	TAIPEI FINANCIAL CENTER CORP.	8.315	8.14	8.24	8.40	8.48
8	YOKE Industrial Corp.	8.180	7.68	8.46	8.48	8.10
9	Trade-Van Information Services Co.	8.060	8.46	8.36	8.52	6.90
9	Swancor Holding Co., LTD.	8.060	8.22	8.12	8.40	7.50
9	REJU CONSTRUCTION CO., LTD.	8.060	7.66	8.38	8.84	7.36
12	King s Town Bank	8.045	7.96	8.42	8.36	7.44
13	FORTUNE ELECTRIC CO.,LTD	8.040	7.58	8.48	8.10	8.00
14	TAIWAN HOPAX CHEMS.MFG.CO.LTD	7.990	8.50	8.06	7.94	7.46

15	President Securities Corp.	7.985	8.80	8.20	7.88	7.06
-----------	-----------------------------------	-------	------	------	------	------

First Class Securities Firm in Pacific-Asia Region

President Securities
(Hong Kong)Ltd.,
Shanghai
Representative
Office

Significant
Inroads
into China

President Securities
Ltd.,
Xiamen
Representative
Office

President Securities
(Hong Kong) Ltd.

Comprehensive
Financial
Services

Mutually-beneficial
Strategic Alliances

Capitalize on
Group-wide
Opportunities
and Efficiencies

All of President
Enterprises' Vast
Resources

President
Futures
Corp.

Uni-President
Asset
Management

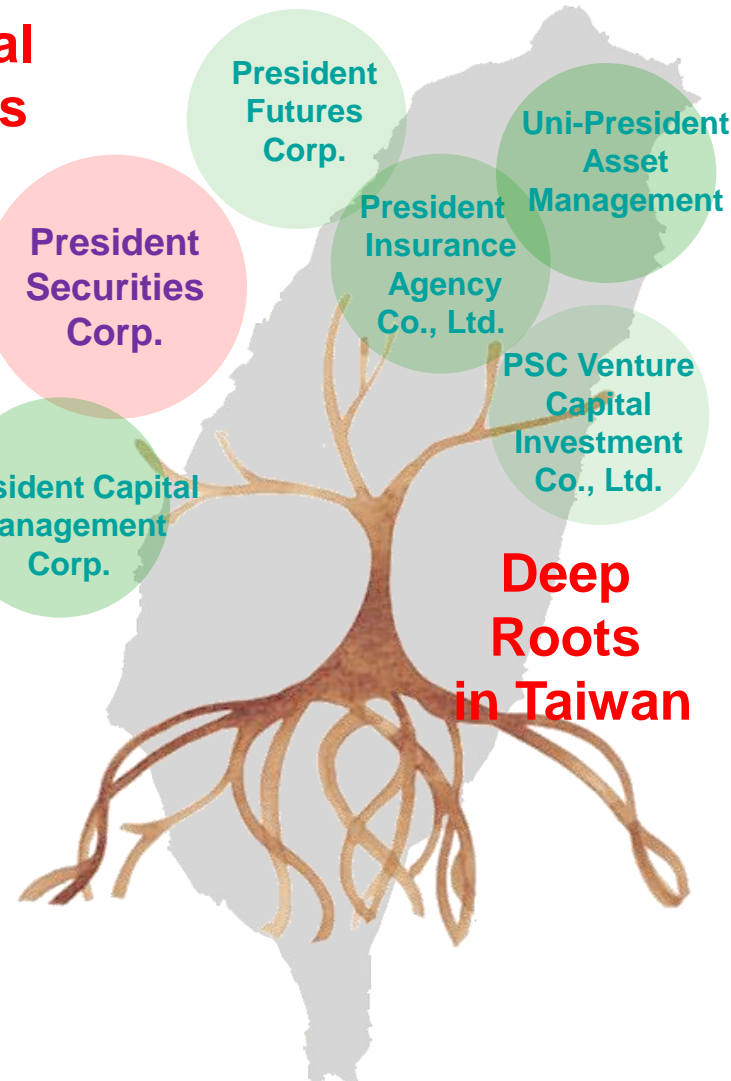
President
Insurance
Agency
Co., Ltd.

PSC Venture
Capital
Investment
Co., Ltd.

President
Securities
Corp.

President Capital
Management
Corp.

Deep
Roots
in Taiwan



Q&A