

FITZROY RESOURCES LTD

ABN 43 145 590 110

Fast Facts - April 2012

Share Code	ASX: FRY
Shares on Issue	41 Million
Options	11 Million
Market Cap	\$2.9M @ \$0.07c
Cash at Bank	\$2.0M

Directors and Management

Tom Henderson, **Chairman**
Will Dix, **Managing Director**
Ric Vittino, **Director**

Projects

Rookwood:

- 70km NW of Rockhampton
- 20km S of Marlborough
- Total area approx. 390km²
- 1.75Mt @ 1.7% Cu, 2.1% Zn, 8.5 g/t Ag Inferred JORC Resource

Glentanna:

- 140km SW of Brisbane
- Total area approx. 75km²
- Greenfields Exploration
- Drilling identified low level Cu/Zn mineralisation
- Previous drilling intersected 12.3m @ 1.2% Cu and 8.9% Zn



Contact Details

Perth Office
Lvl 2, 35 Havelock Street
West Perth WA 6005
Postal Address
PO BOX 839 West Perth WA 6872
T +61 8 9481 7111
F +61 8 9320 7501
E admin@fitzroyresources.com.au

31 July 2012

Quarterly Report for the period ending 30 June 2012

HIGHLIGHTS

- Exploration in Queensland delayed due to wet weather
- Ongoing review of corporate opportunities

Exploration

Rookwood Project (100% FRY)

On ground exploration in Queensland has been postponed due to unseasonal wet weather in the Rockhampton region and the on-going focus on reviewing other resources opportunities that are presented to the company.

It is intended that the planned short RC program designed to test the chargeability anomalies discussed in the March Quarterly Report will be completed during the June quarter once a drill rig becomes available.

Soil sampling and drilling of geophysical and geochemical targets at both Comanche and Wilsons will be undertaken when field work recommences.

Glentanna Project (FRY 100%)

No work was completed at Glentanna during the quarter.

Corporate

The company continues to be presented with a large number of opportunities to consider for corporate transactions. These are all assessed on their merits and the market will be kept informed of any developments regarding new projects.

ABOUT FITZROY:

Fitzroy Resources Ltd is an Australian based mineral exploration company, with two significantly underexplored Queensland base metals projects.

Fitzroy's main focus is to rapidly evaluate the Rookwood project, containing the promising Develin Creek Resource (estimated 1.75Mt @1.7% Cu, 2.1% Zn, 8.5ppm Ag and 0.24ppm Au). Typical VHMS prospects such as Rookwood, often contain multiple ore systems, with Develin Creek the first system discovered to date in this terrain. Rookwood contains significant potential for the discovery of substantial copper/gold deposits beyond the existing resource.

The smaller Glentanna project, to the south, remains in the early exploration stages, with previous drilling suggesting strong potential. Focus on this project will include further first pass geophysics and drilling.

COMPETENT PERSONS STATEMENT:

The information in this document that relates to Mineral Resources has been compiled by Ms Fleur Muller. Ms Muller, who is a Member of the Australasian Institute of Mining and Metallurgy, is a full time employee of Geostat Services Pty Ltd and produced the Mineral Resource Estimate based on data and geological information supplied by Icon. Ms Muller has sufficient relevant experience to the style of mineralisation and type of deposit under consideration and to the activity that she is undertaking to qualify as a Competent Person as defined in the 2004 edition of the Australasian Code. Ms Muller consents to the inclusion in this document of the matters based on her information in the form and context in which it appears.

The information in this document that relates to Exploration Results has been compiled by Mr William Dix. Mr Dix, who is a Member of the Australasian Institute of Mining and Metallurgy is a full time employee of the Company. Mr Dix has sufficient relevant experience to the style of mineralisation and type of deposit under consideration and to the activity that she is undertaking to qualify as a Competent Person as defined in the 2004 edition of the Australasian Code. Mr Dix consents to the inclusion in this document of the matters based on his information in the form and context in which it appears.

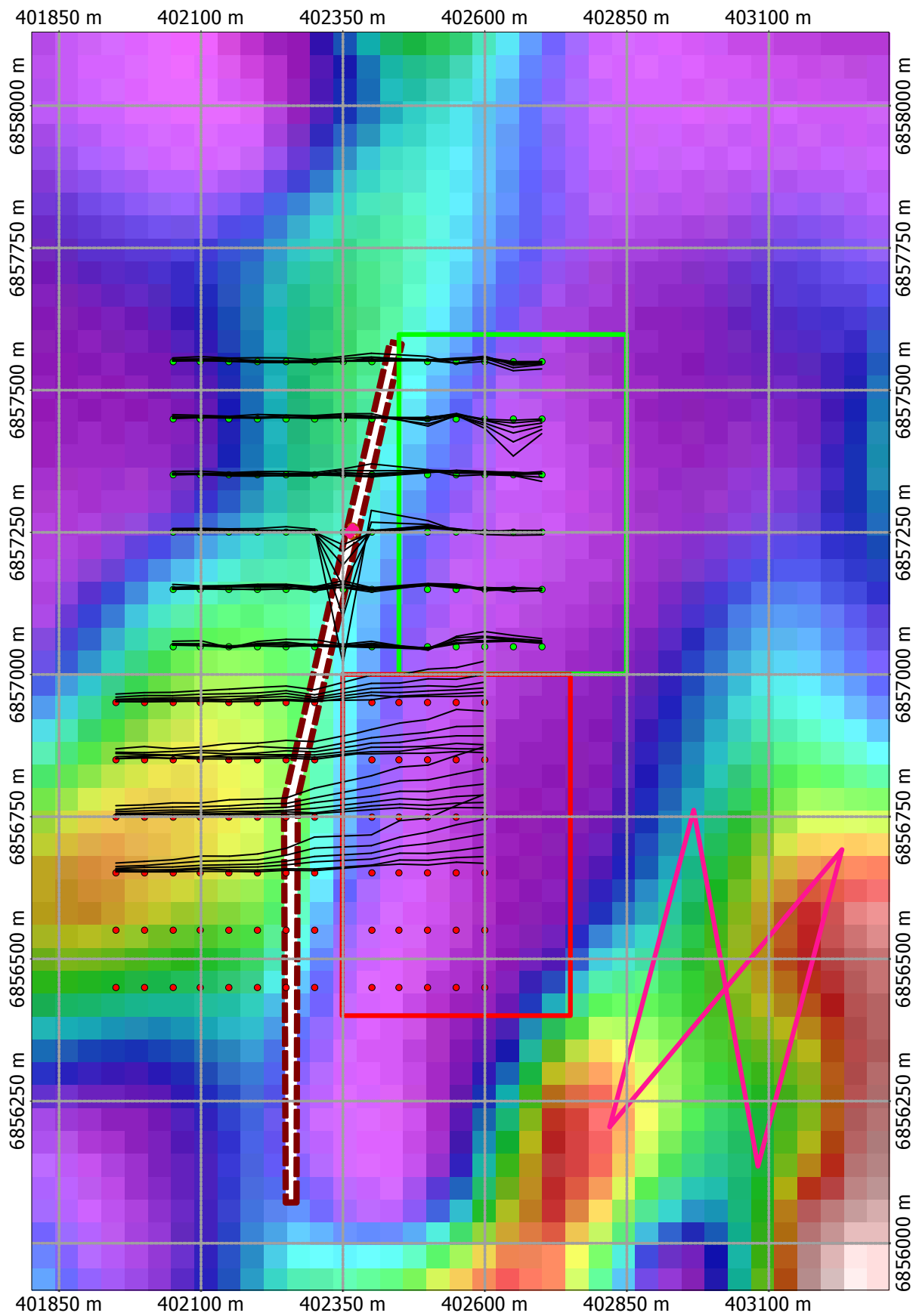


Figure 2: Glentanna FLEM channels 16-21 . Modelled plates as shown. Background image TMI1VD 400m data.