



ActivEX

ActivEX Limited

*Mining 2011
Investor Update
Managing Director
Doug Young*



Discovering new gold-copper resources



Transforming ActivEX into a potential copper/gold miner

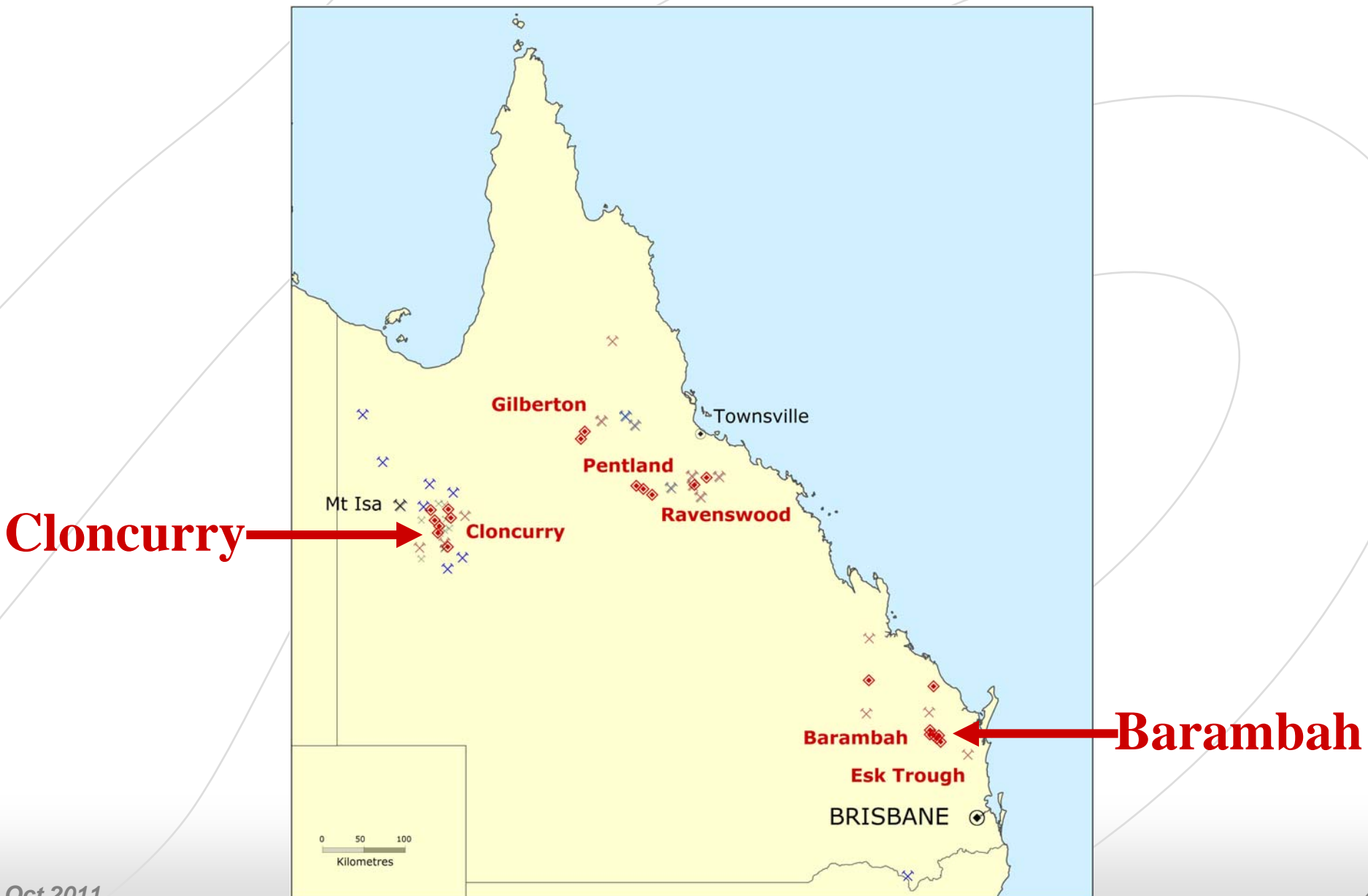
2011 – at Cloncurry

- High grade near surface copper gold intersections
- Focus on establishing Resources
- Centrally located in resurgent mining province
- Neighbours getting into new production in 2012

2011 – at Barambah (Cracow country)

- Bonanza grade gold-silver intersections

ActivEX Projects

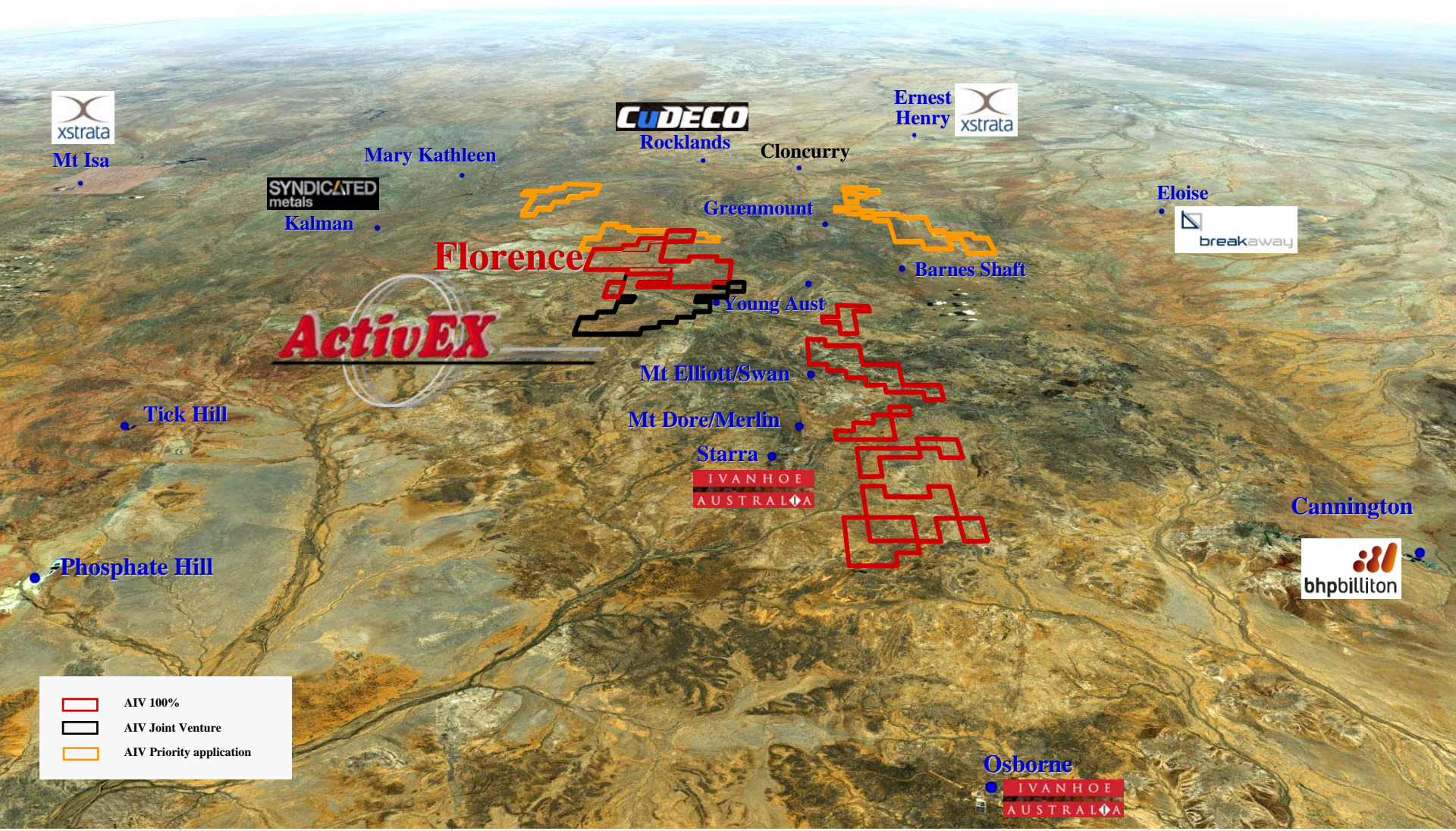


- ActivEX - exciting new discoveries in high quality projects
- World scale metals mining province - Cloncurry district
 - Mount Isa, Ernest Henry, Cannington, Century



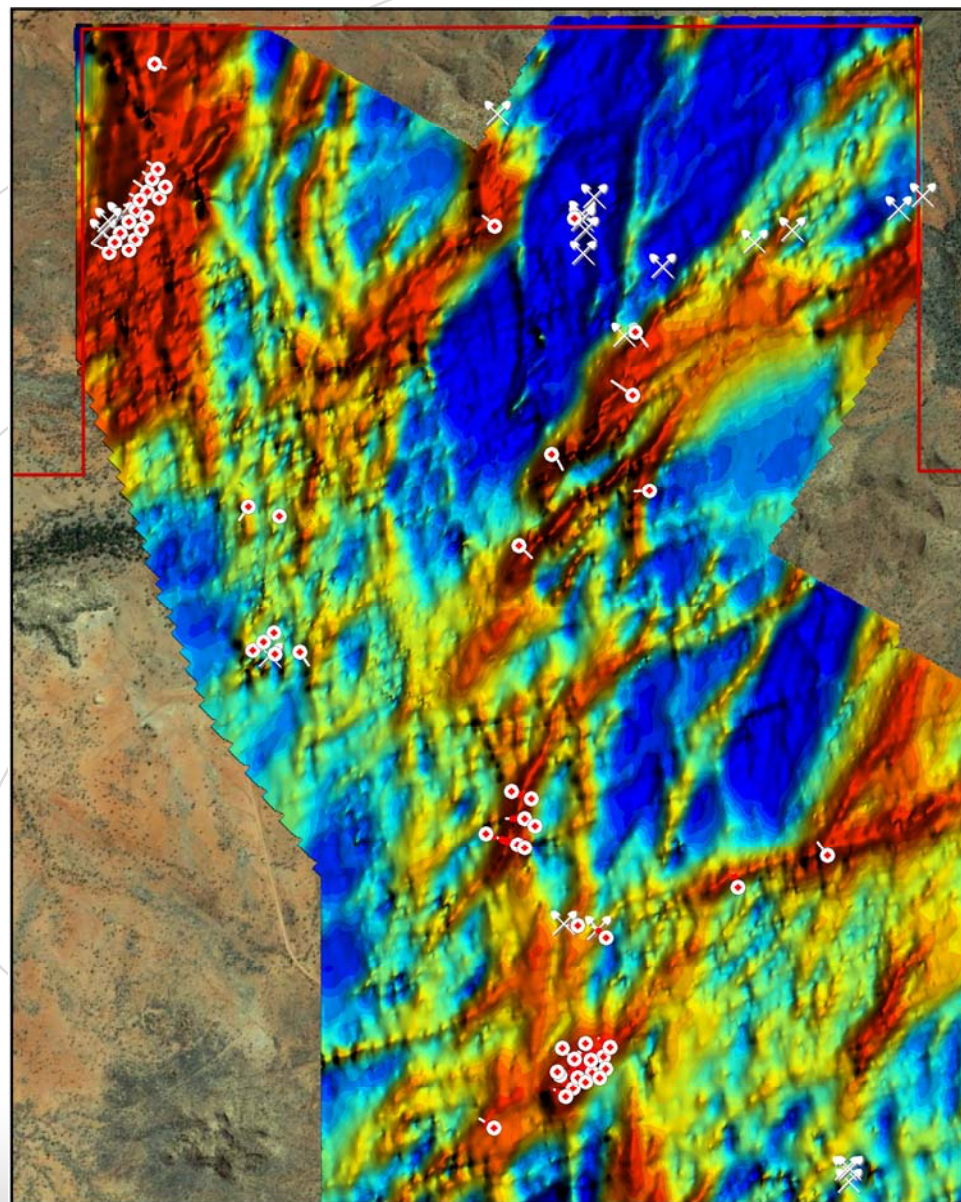
- Resurgent neighbourhood
 - Exco sale to Xstrata 2010
 - Ivanhoe production startups – Osborne 2012, Merlin 2014, Mount Dore 2014, Mount Elliot 2016
 - Cudeco - production at Rocklands 2012

Cloncurry Metals Province



Florence Project

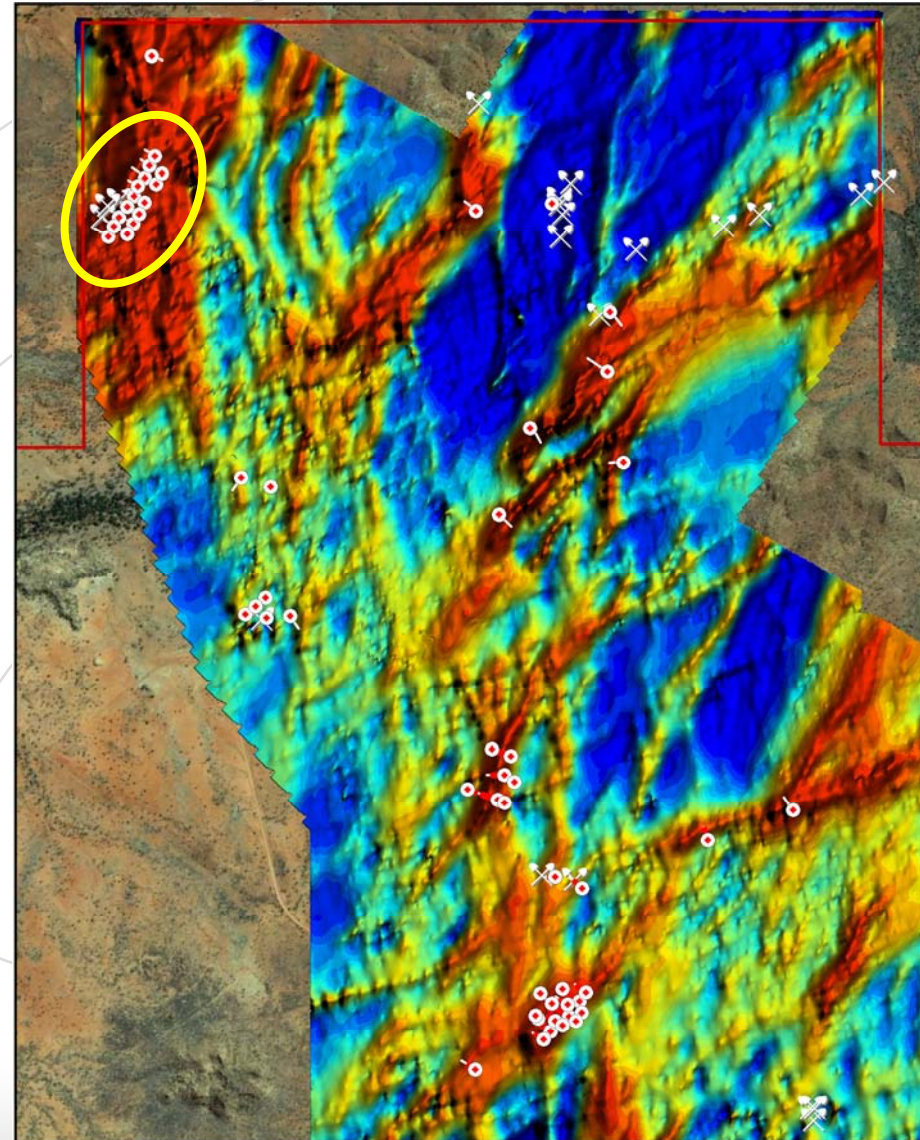
- Copper-gold-cobalt discoveries in 2010-2011
- From extensive drilling – 7.6km in 57 holes
- Significant high grade zones
- Shallow mineralised zones puts focus on potential pits



SAM conductivity image

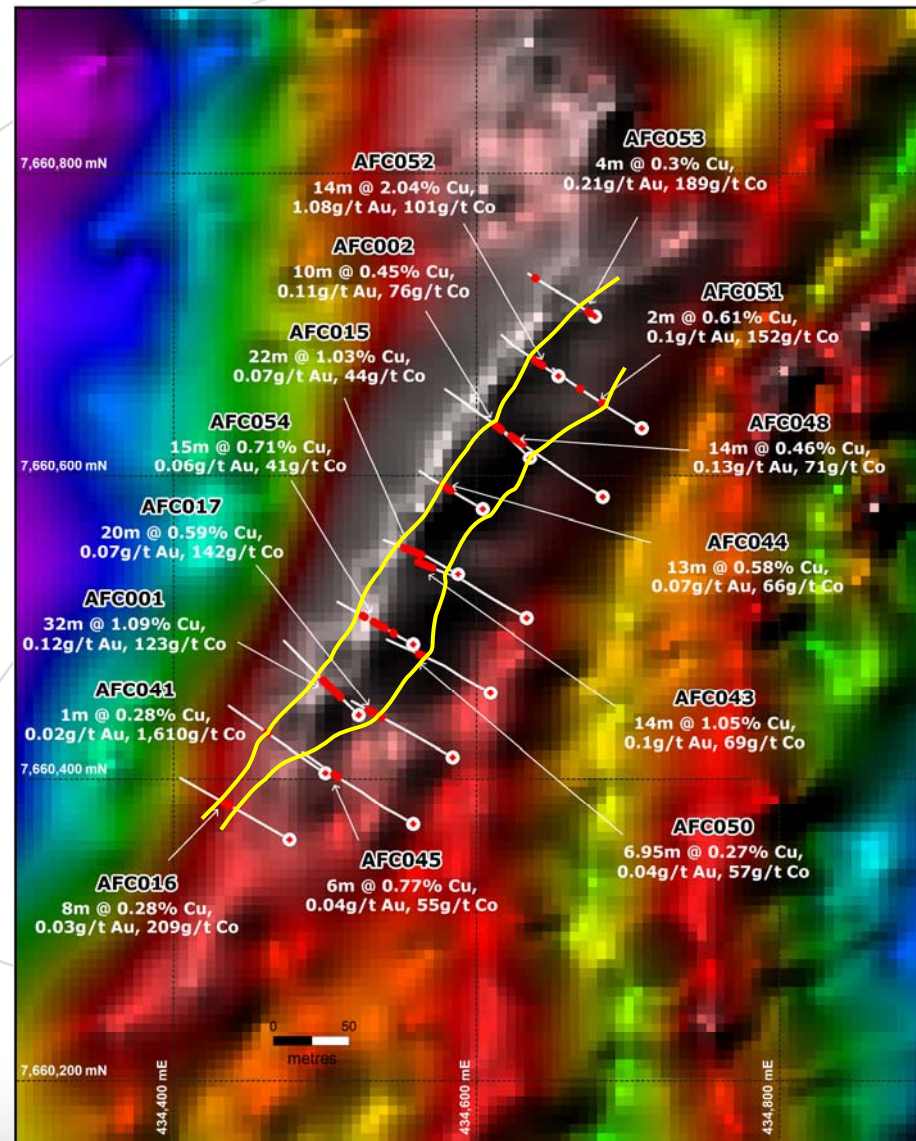
Florence Bore North (FBN)

- Discovery hole 2010
 - 32m @ 1.09% Cu, 0.12g/t Au, 123g/t Co
- 2011 drilling highlights
 - High grade zones intersected
 - 22m @ 1.03% Cu, 0.07g/t Au, 44g/t Co
 - 14m @ 2.04% Cu, 1.08g/t Au, 101g/t Co

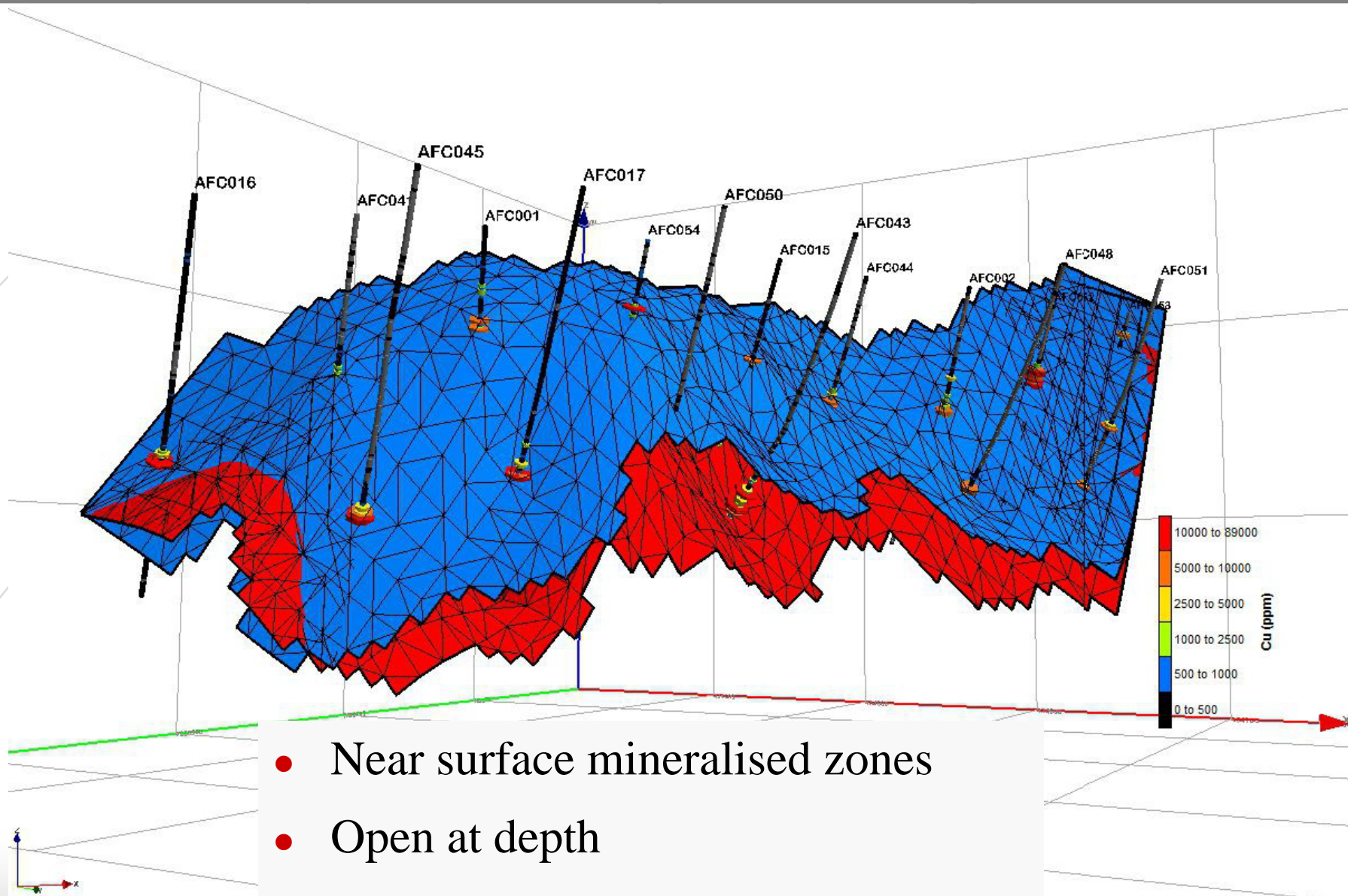


Florence Bore North (FBN)

- Discovery hole 2010
 - 32m @ 1.09% Cu, 0.12g/t Au, 123g/t Co
- 2011 drilling highlights
 - High grade zones intersected
 - 22m @ 1.03% Cu, 0.07g/t Au, 44g/t Co
 - 14m @ 2.04% Cu, 1.08g/t Au, 101g/t Co
- Near surface
 - All intersections above 120m
 - Oxide copper
- Economic scale indicated
 - 350m long, 14 – 30m wide
 - Higher grades plunge to south-west
 - Open at depth



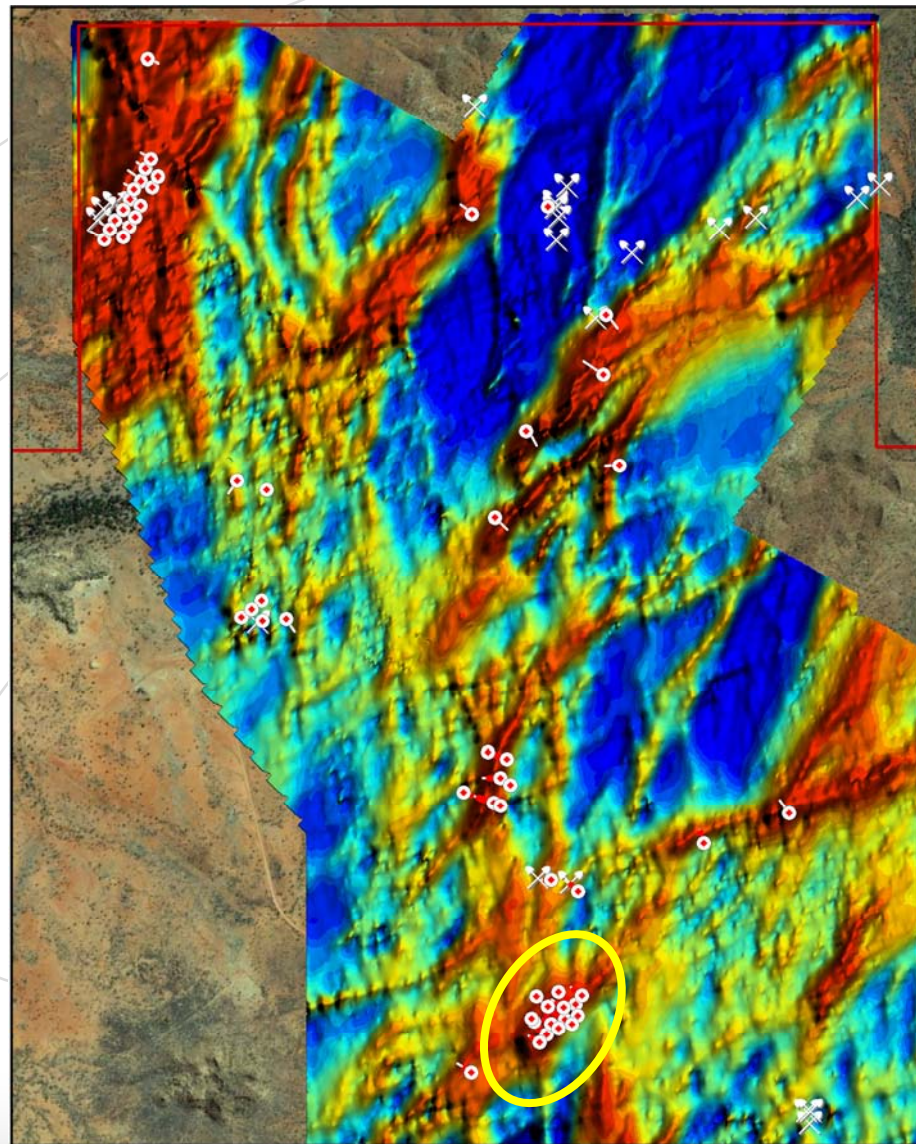
Florence Bore North



- Near surface mineralised zones
- Open at depth
- Deep drilling planned

Florence Bore South (FBS1)

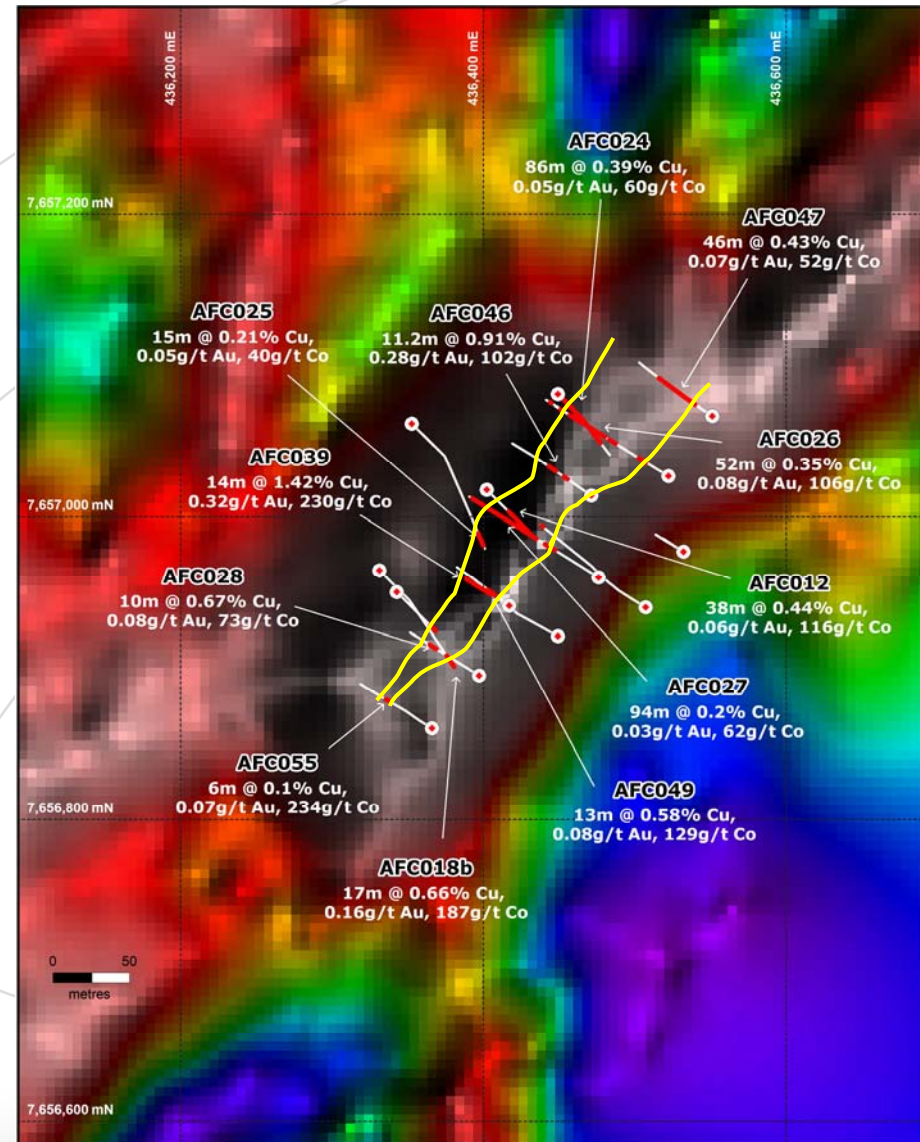
- Discovery hole
 - 38m @ 0.44% Cu, 0.06g/t Au, 116g/t Co
- 2011 drill highlights
 - Wide zones of mineralisation
 - 86m @ 0.39% Cu, 0.05g/t Au, 60g/t Co
 - High grade zones
 - 14m @ 1.42% Cu, 0.32g/t Au, 230g/t Co



Florence Bore South (FBS1)

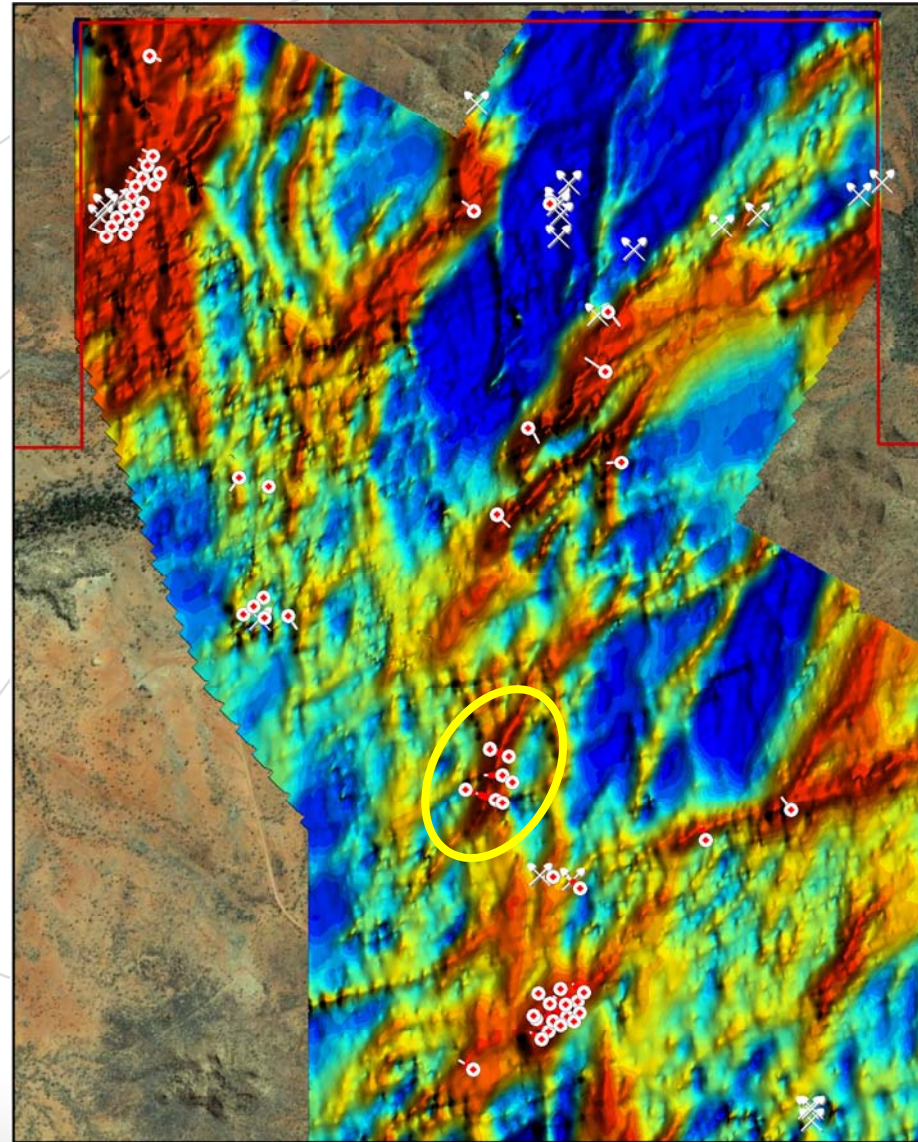


- Discovery hole
 - 38m @ 0.44% Cu, 0.06g/t Au, 116g/t Co
- 2011 drill highlights
 - Wide zones of mineralisation
 - 86m @ 0.39% Cu, 0.05g/t Au, 60g/t Co
 - High grade zones
 - 14m @ 1.42% Cu, 0.32g/t Au, 230g/t Co
- Second potential open pit
 - 3km south of FBN
 - All intersections above 150m
 - >400m strike, 14 – 86m wide
 - Open to north-east and at depth
 - Primary zone not yet intersected



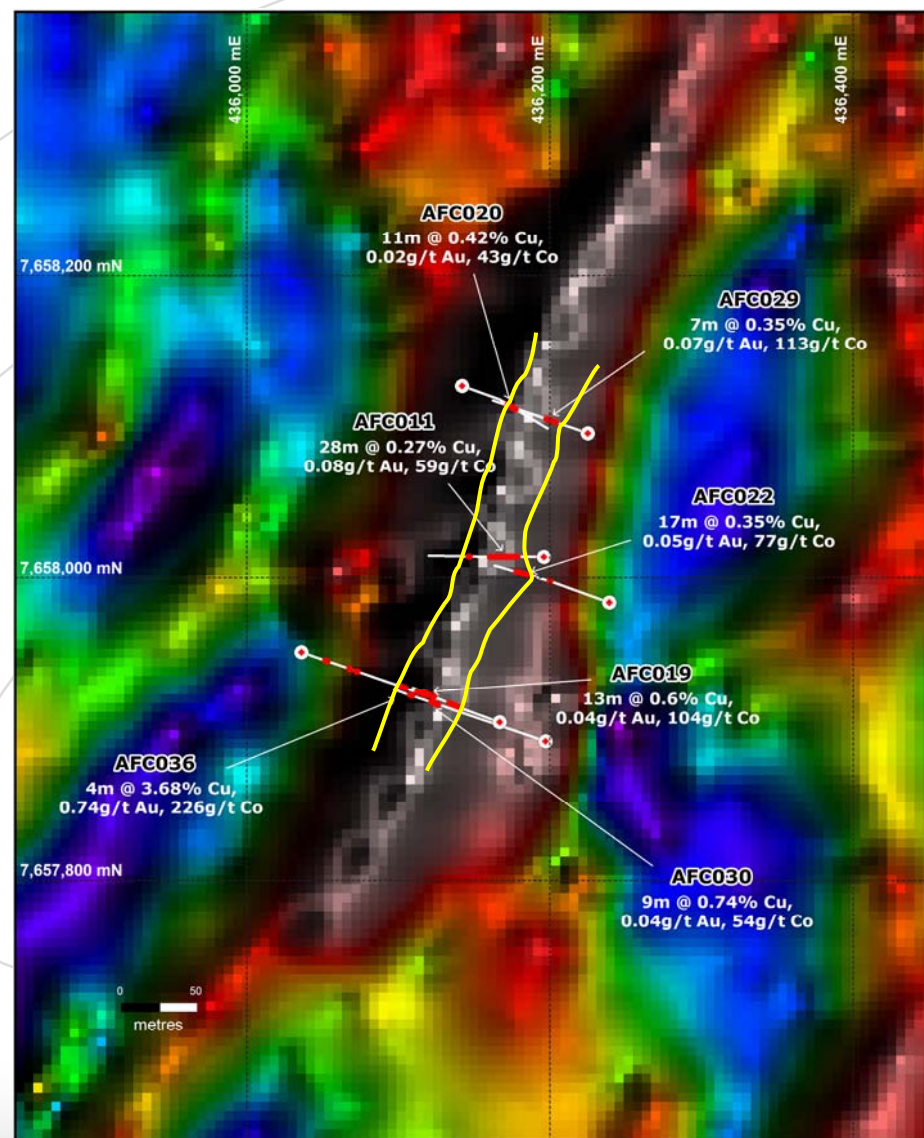
Florence Bore South (FBS2)

- Mineralisation over 400m
- Deeper drilling shows higher grades in primary zone
 - 4m @ 3.68% Cu, 0.74g/t Au, 226g/t Co



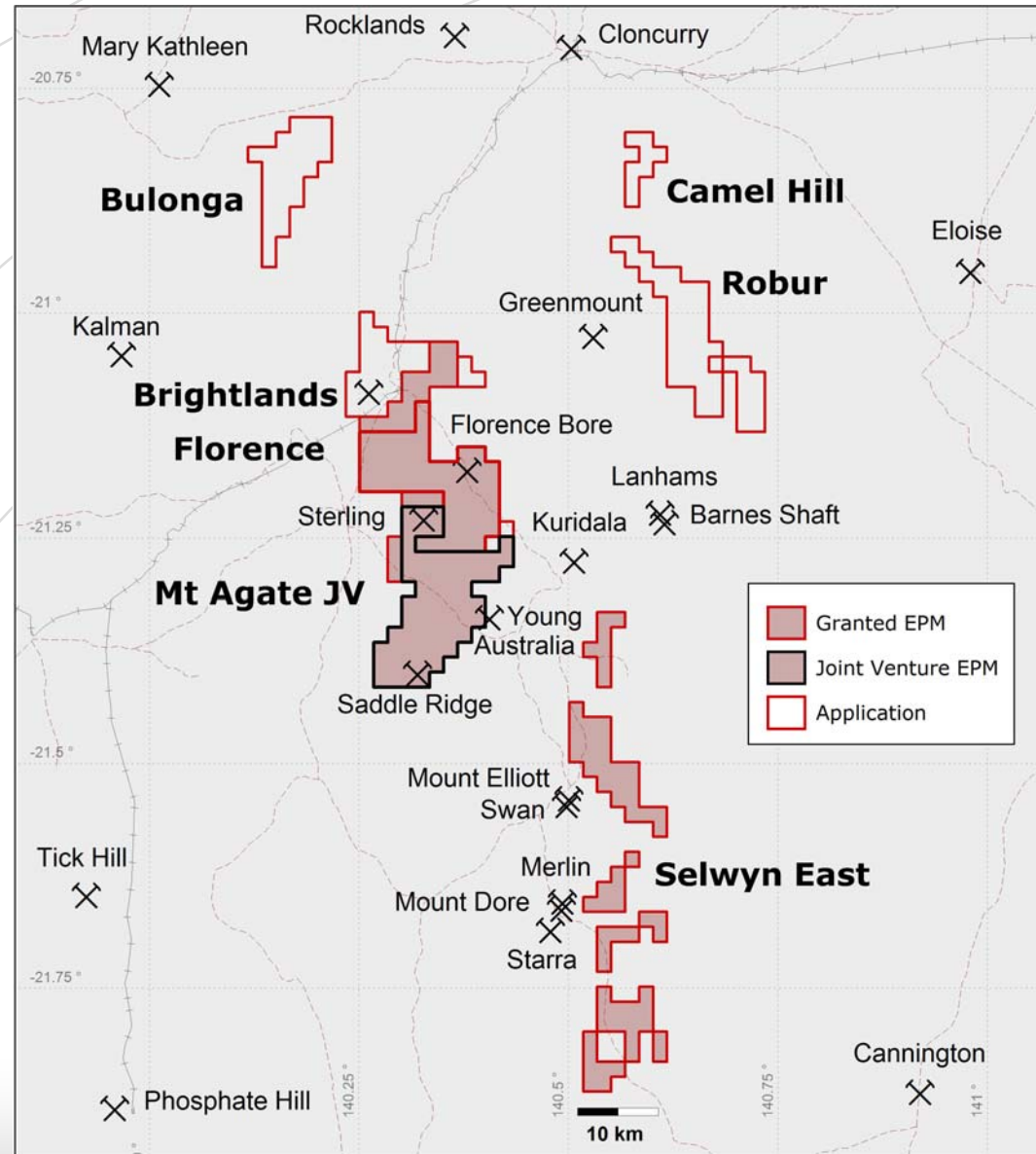
Florence Bore South (FBS2)

- Mineralisation over 400m
- Deeper drilling shows higher grades in primary zone
 - 4m @ 3.68% Cu, 0.74g/t Au, 226g/t Co
- Potential for third open pit
- More drilling required



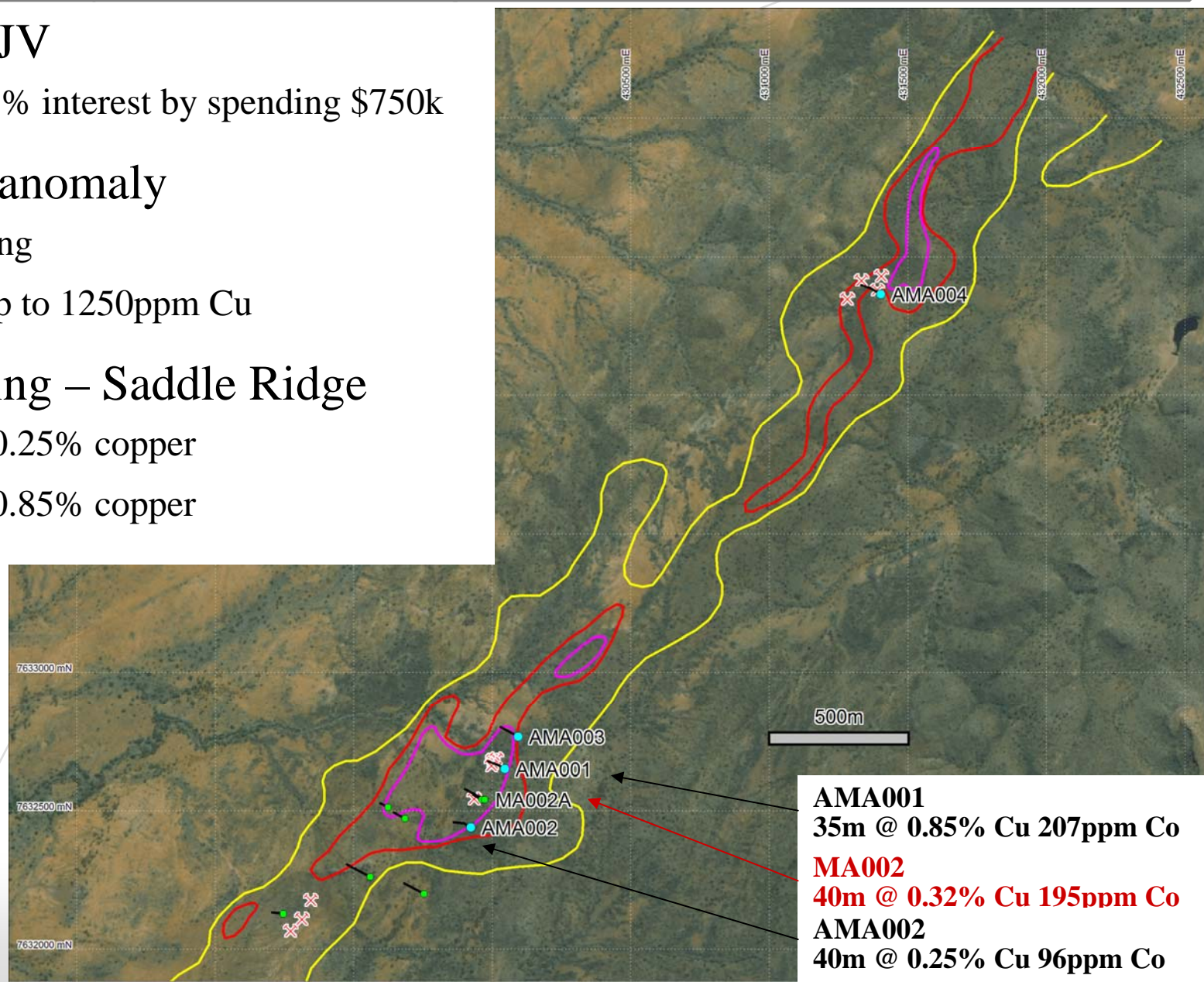
Cloncurry District

- Multiple holdings, 992 km²
 - Area has doubled in size
 - Granted area 636km²
 - Priority for grant 356km²
- Priority applications
- Mt Agate JV
- Selwyn East



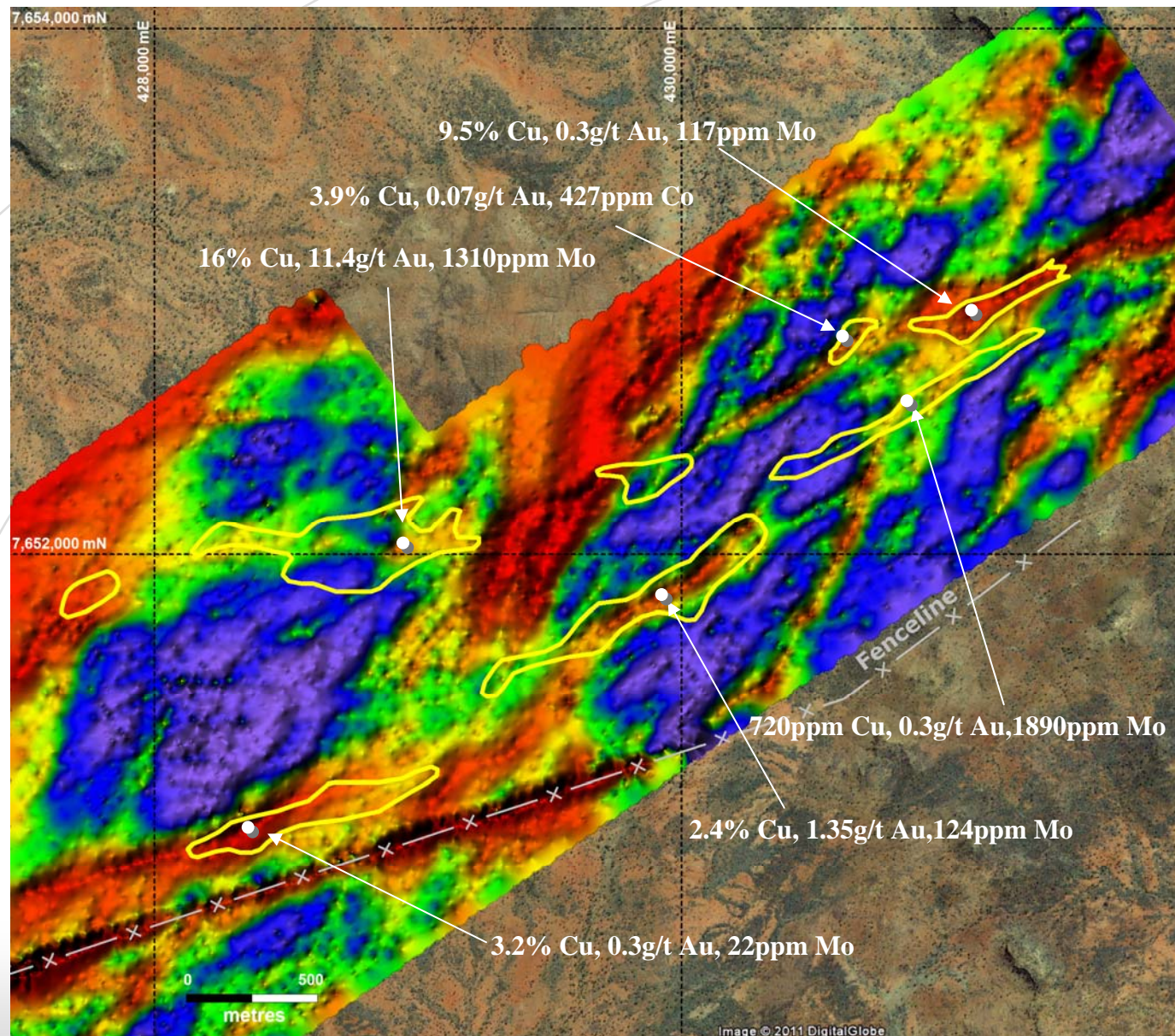
Mt Agate – Saddle Ridge

- Mt Agate JV
 - up to 75% interest by spending \$750k
- Geochem anomaly
 - +5km long
 - values up to 1250ppm Cu
- 2010 drilling – Saddle Ridge
 - 40m @ 0.25% copper
 - 35m @ 0.85% copper

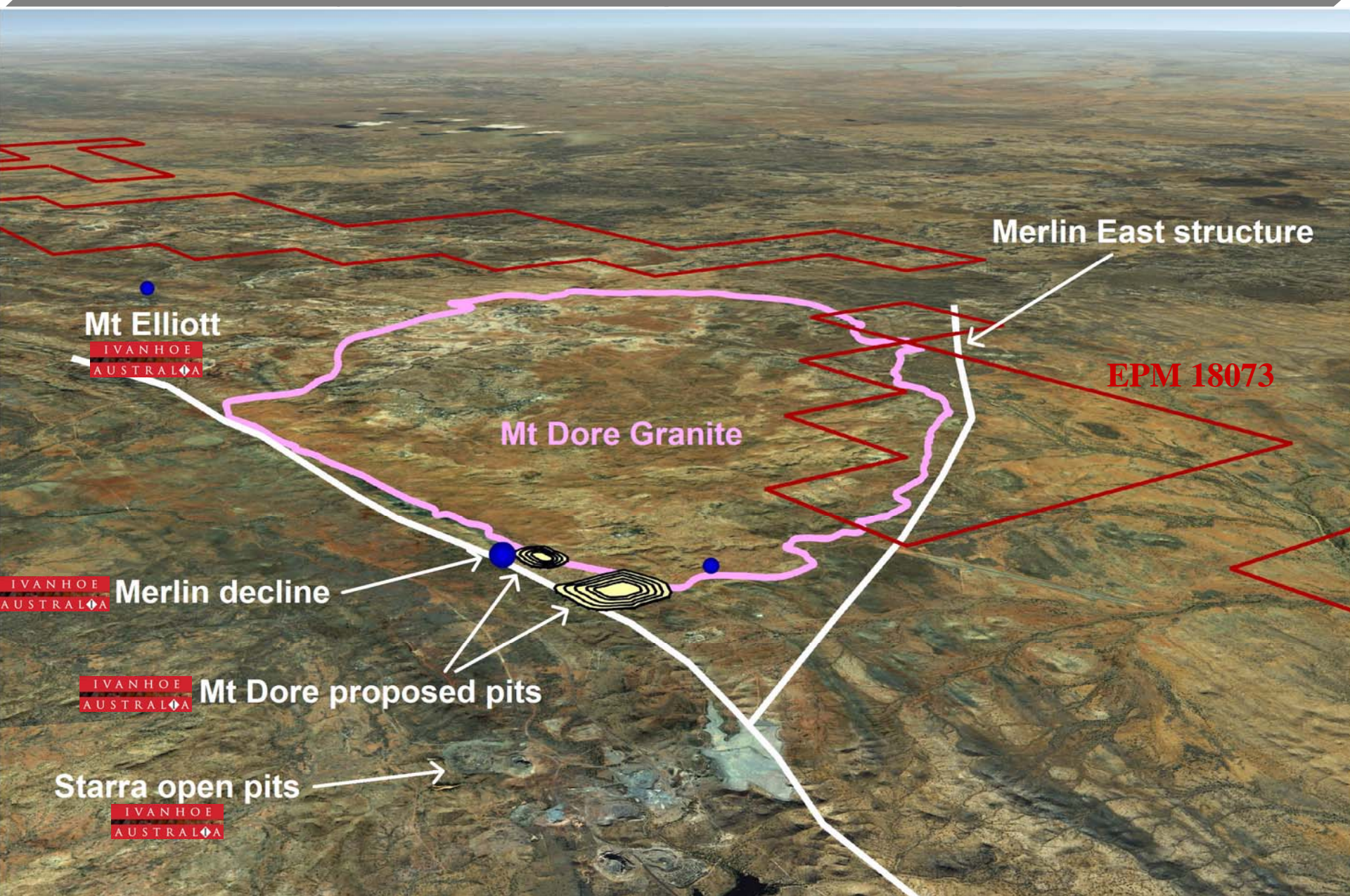


Mt Agate – Sterling

- Granite breccias
- 4.5km long
- Copper
- Gold
- Molybdenum
- Uranium
- REOs



Selwyn East Project – great address



Mt Elliott



Merlin East structure

EPM 18073

Mt Dore Granite

Merlin decline



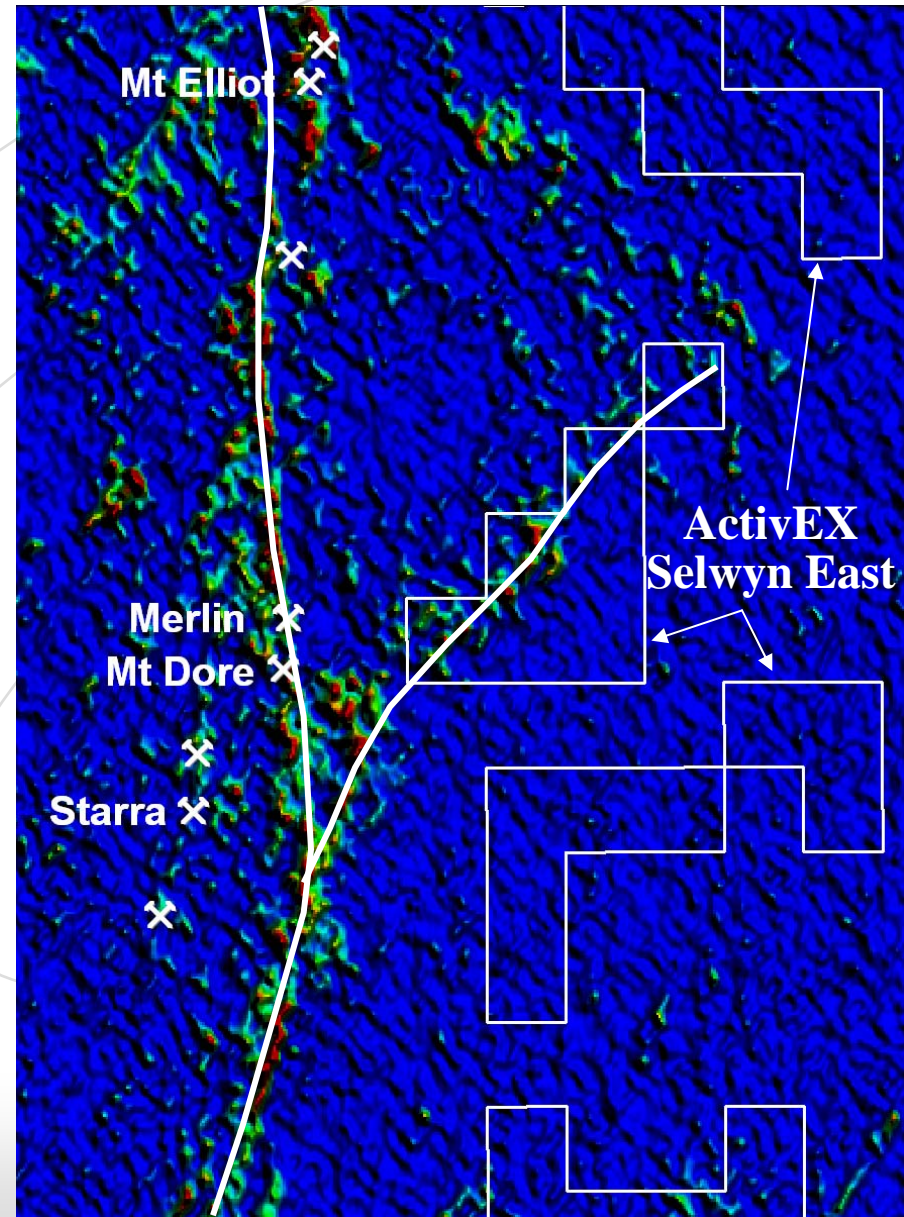
Mt Dore proposed pits



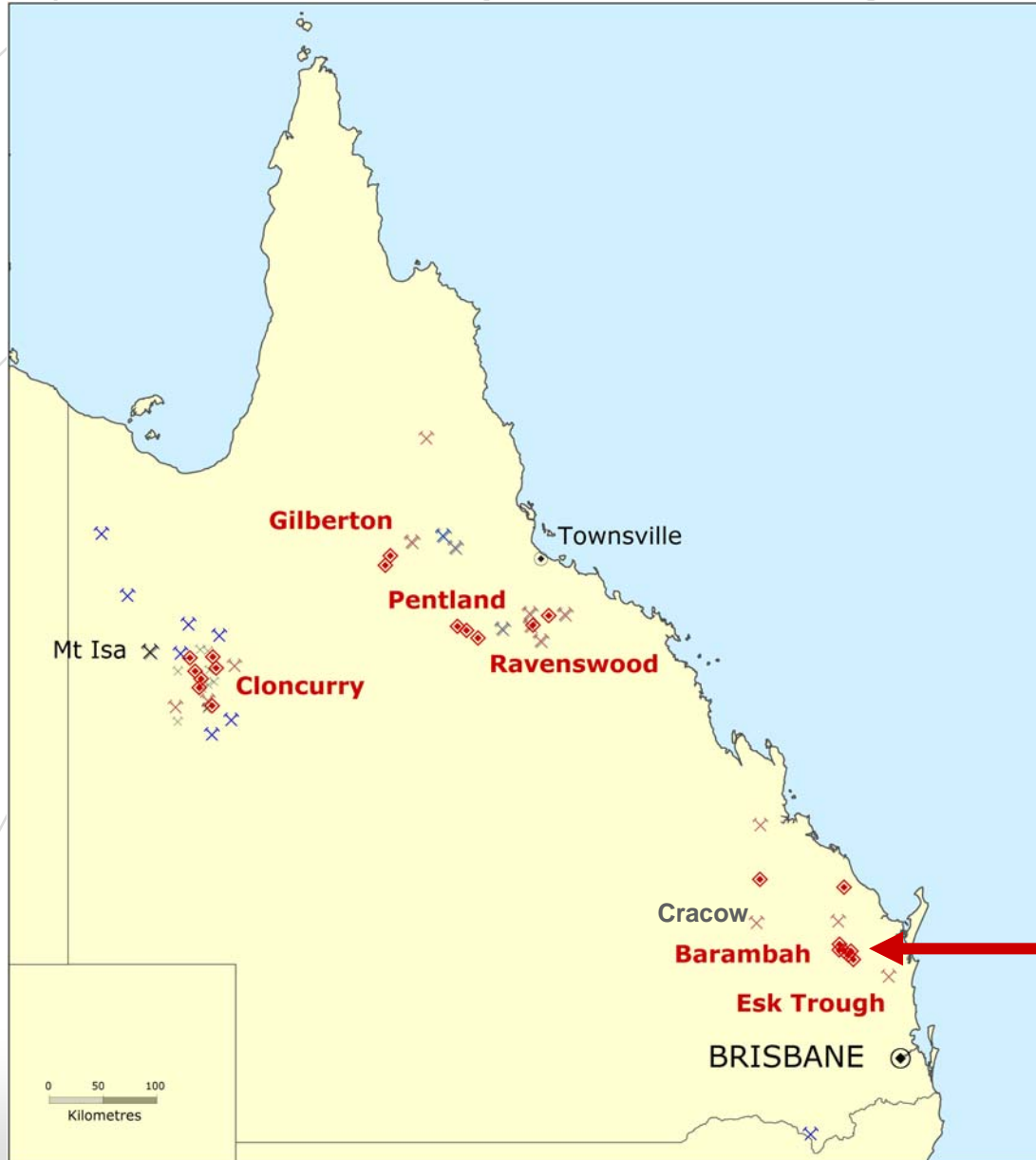
Starra open pits



- EPM granted
- Radiometrics shows clear structures - related to Merlin-Mt Dore trend
- Exploration commenced

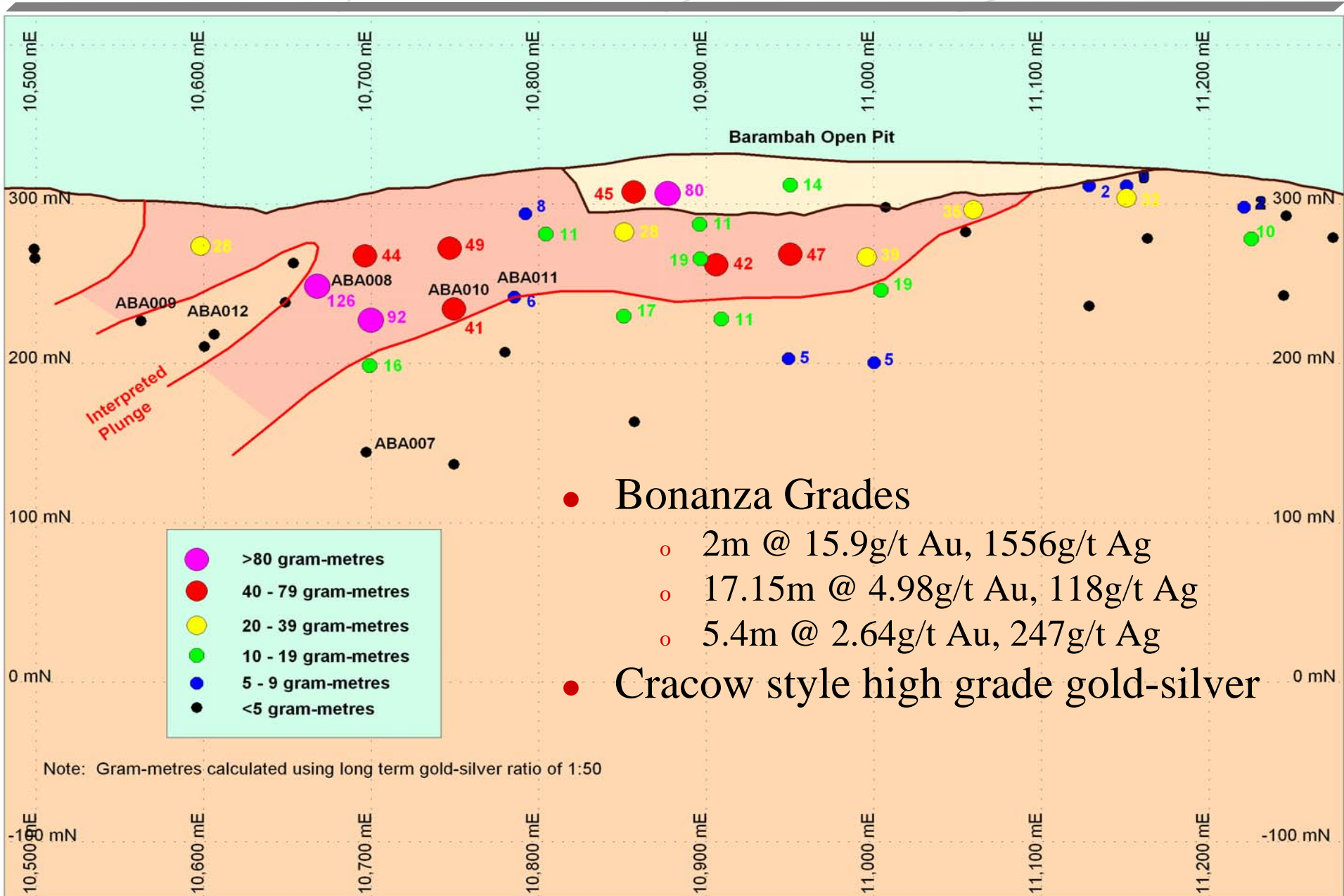


ActivEX Projects



Barambah

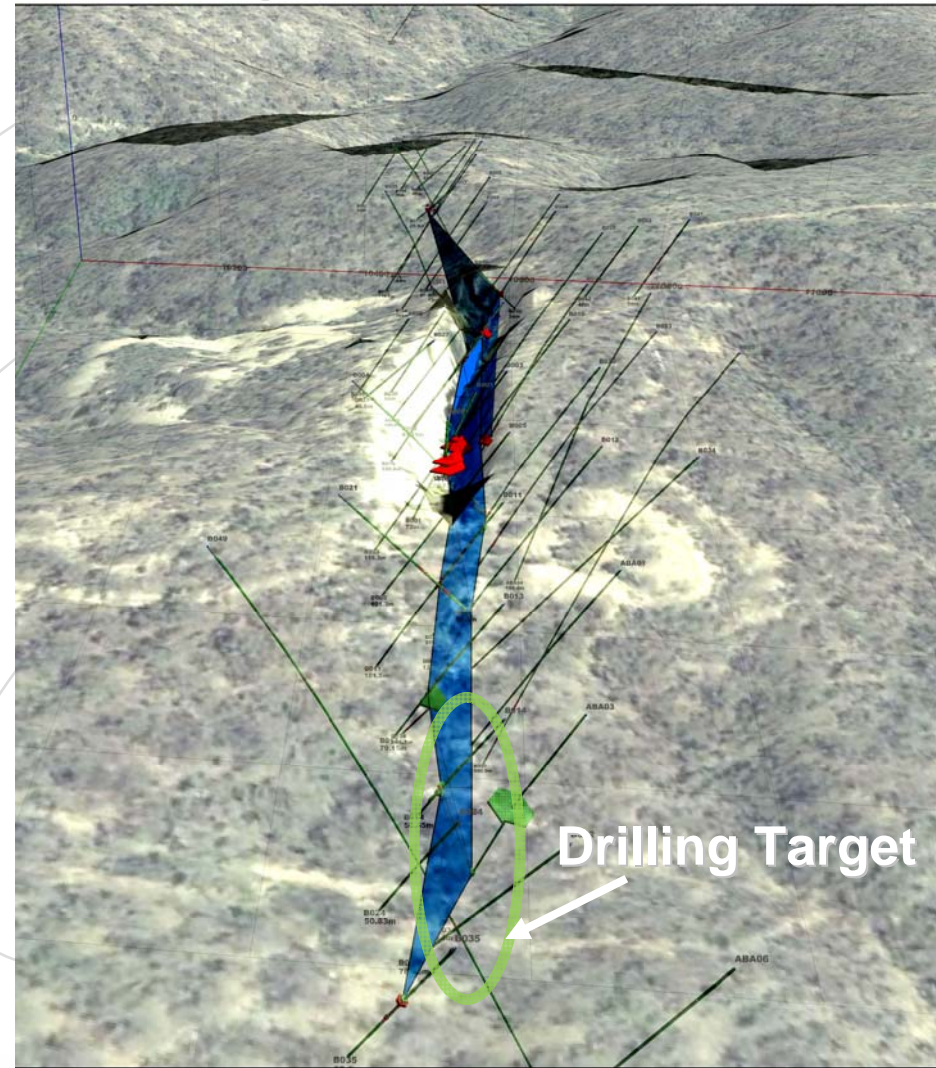
Barambah Project SEQ



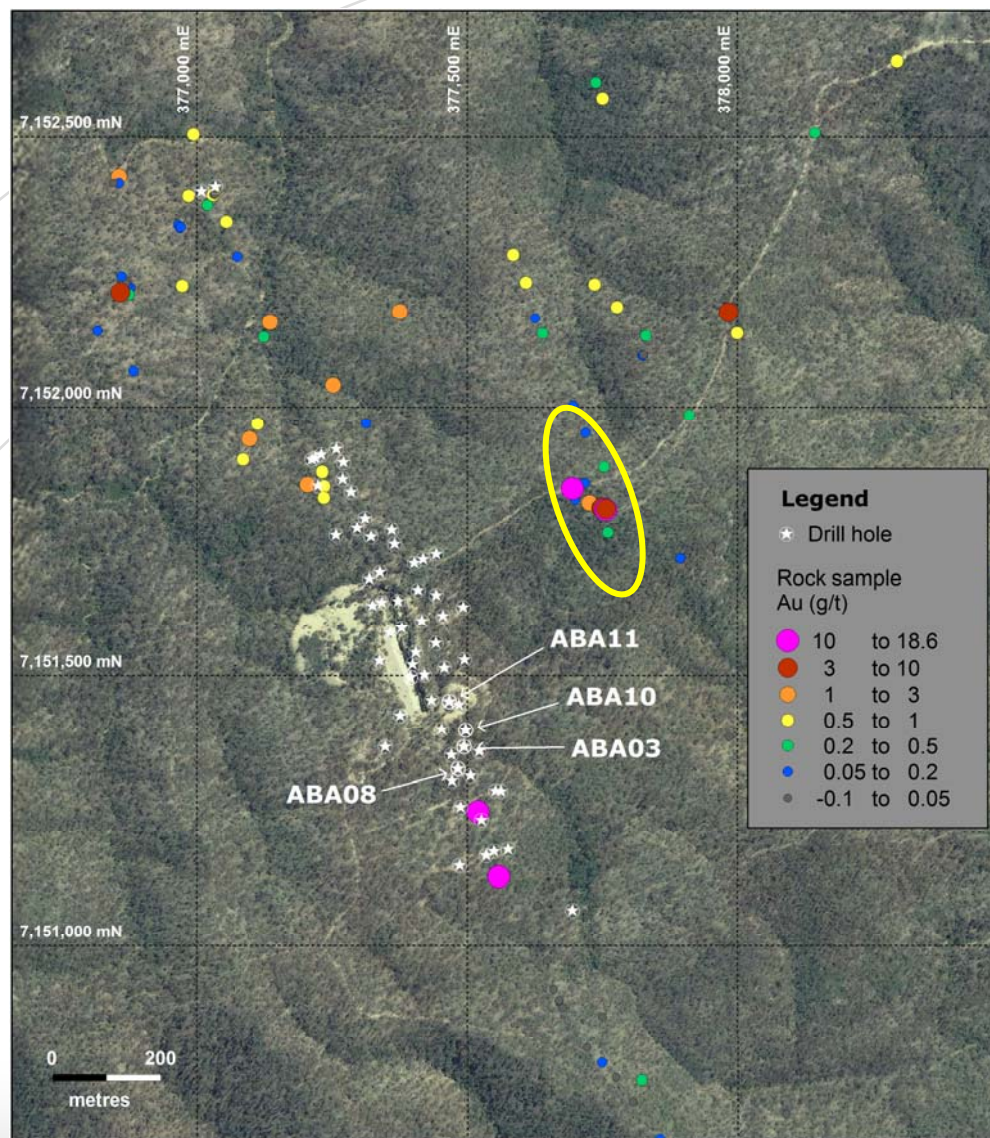
- **Bonanza Grades**
 - 2m @ 15.9g/t Au, 1556g/t Ag
 - 17.15m @ 4.98g/t Au, 118g/t Ag
 - 5.4m @ 2.64g/t Au, 247g/t Ag
- **Cracow style high grade gold-silver**

Note: Gram-metres calculated using long term gold-silver ratio of 1:50

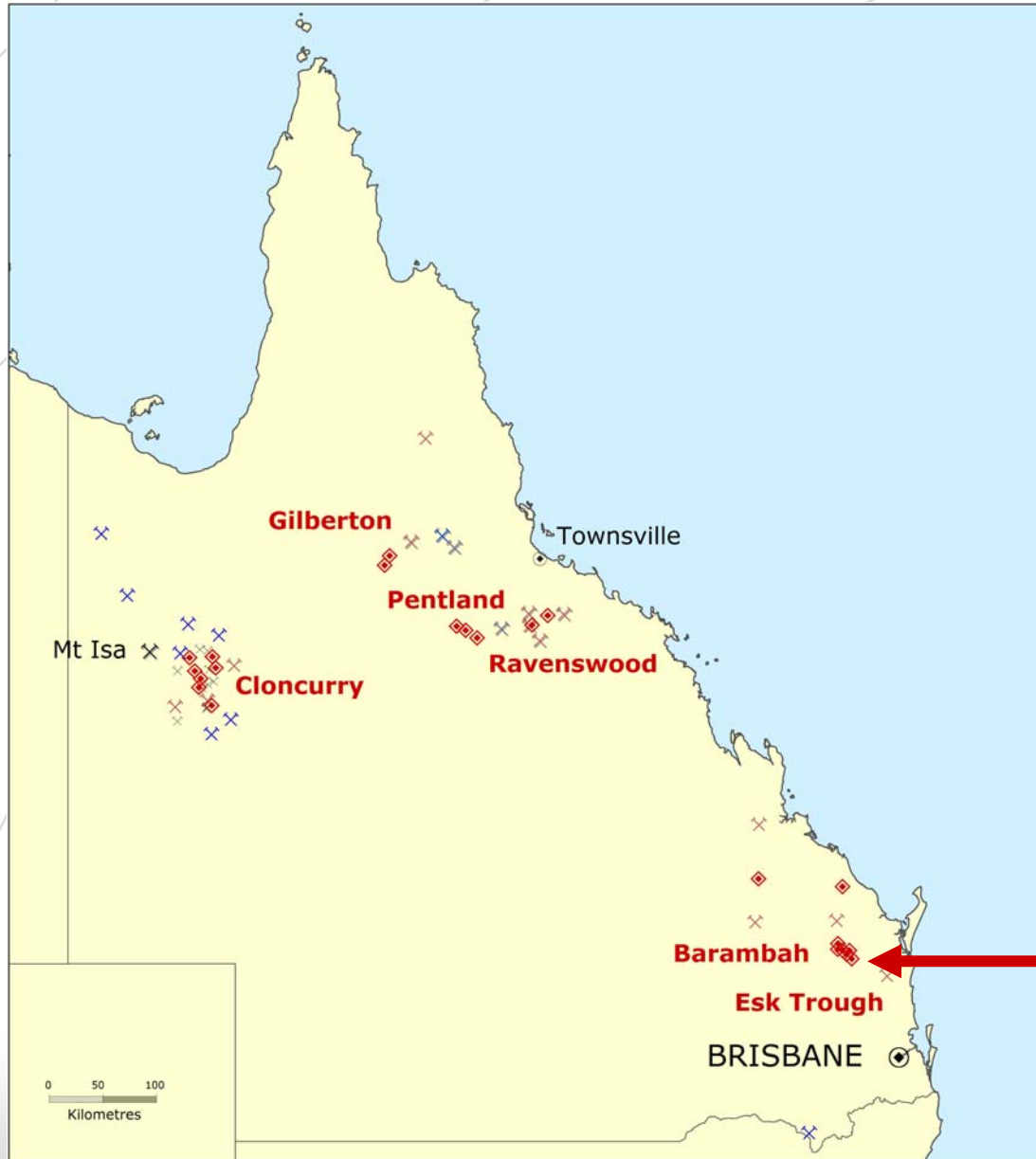
- Open cut or shallow underground
- Accessible from open pit
- Treatment options within 50km
- Deeper drilling planned



- Parallel vein system discovered outside tested area
- High grade gold-silver values
 - Up to 18.6g/t Au and 214g/t Ag
 - Detailed sampling in progress
- Possible drill target



ActivEX Projects



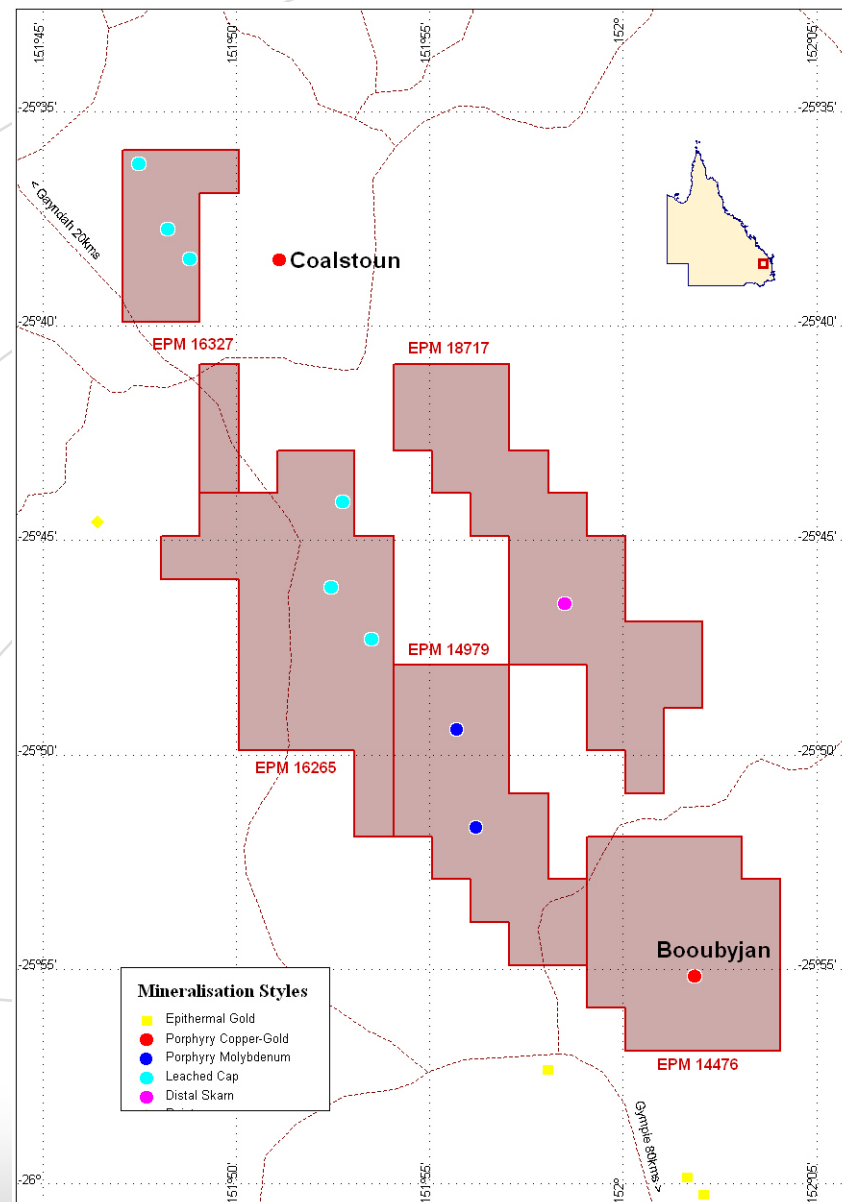
**Esk
Trough**

Esk Trough Joint Venture

- \$6M Coppermoly Joint Venture
 - COY spend \$3M to earn 51%
 - COY spend further \$3M to earn 70%
 - COY minimum spend \$0.5M
 - AIV claw back to 40%



- Targeting porphyry copper-gold
- Wide zones - 290m @ 0.13% Cu,
- Good grades - 88m @ 0.47% Cu, 0.49g/t Au



Capital Structure

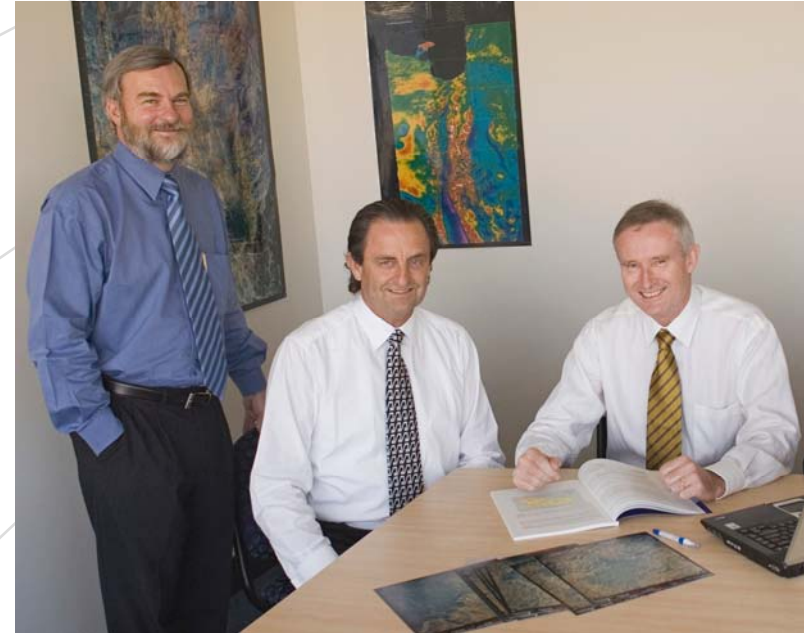
- Issued Capital: 165,295,993
- Listed Options (exercise at \$0.08, 31-07-2012) 73,164,369
- Unlisted Options: 2,450,000
- Market Cap: (10-2011) \$5.6M
- Key Holders
 - M Ruane (&Associates) 14%
 - MD 7%
- Cash \$1.3M

One year Price/volume Graph



Key Management and Board

- **Ian Daymond - Chairman**
Commercial Lawyer, experience with WMC, Hunter Resources, Delta Gold as general counsel, NED Hill End Gold Limited, Honorary Consul for Botswana in NSW
- **Doug Young - Managing Director**
Geologist, 30 years experience with North, Griffin Group incl 20 years as mineral and coal exploration consultant, AIG Councillor
- **Paul Crawford - Non Executive Director/ Company Secretary**
Accountant, 30 years experience in technical and management roles in minerals, coal and petroleum industries, Company Sect Orocobre Limited, Elementos Limited



Staff

- QLD - 4 geologists plus field/support crew, stable dedicated team

- Cloncurry – copper gold
 - Establish JORC Resources at Florence
 - Discover new zones of mineralisation near Florence
 - Convert Mt Agate and Selwyn East into Resource targets

- Barambah – gold-silver
 - Build on bonanza gold-silver grades
 - Establish JORC Resources

- Building on outstanding exploration success in 2011
- Converting strategic ground position into potential copper and gold mines

Thank you

Information provided is for information purposes and does not constitute financial product advice. You should obtain independent advice before making any financial decisions. Although ActivEX Limited and its related bodies corporate ('AIV') has made every effort to ensure the accuracy of the information as at the date of publication, AIV does not give any warranty or representation as the accuracy, reliability or completeness of the information. To the extent permitted by law, AIV and its employees, officers and contractors shall not be liable for any loss or damage arising in any way (including by way of negligence) from or in connection with any information provided or omitted or from any one acting or refraining to act in reliance on this information. Any forward looking statements should not be relied upon for investment decision making and you should rely upon the advice of your financial advisor before making any decision to purchase AIV shares or securities.

The information in this presentation that relates to exploration results is based on information compiled by Mr D. I. Young, who is a Fellow of the Australian Institute of Geoscientists and a full time employee of ActivEX Limited. Mr Young has sufficient experience relevant to the styles of mineralisation and types of deposit under consideration and the activities which he is undertaking to qualify as a Competent Person as defined by the Australasian Code for Reporting Exploration Results, Mineral Resources and Ore Reserves. Mr Young consents to the inclusion of his name in this report and to the issue of this report in the form and context in which it appears.

ActivEX Limited
117 Quay Street
Brisbane QLD 4000



Ph: (07) 3236-4188
Fax: (07) 3236-4288
d.young@activex.com.au

www.activex.com.au