

29 May 2024

ASX Market Announcement

**RC DRILLING COMMENCED AT EAST BOREHOLE PROSPECT
 COBALT/BASE METAL EXPLORATION, ENMORE EL 9220, BROKEN HILL NSW**

A two-hole RC drilling program has commenced at the East Borehole Prospect within the tenement Enmore EL 9220 **Figure 1 and 2**. The drilling program will test IP chargeability anomalies defined at the contact of the Cues Formation and Redan Gneiss in the recent IP survey **Table 1**. (See the *September 2023 Quarter Activities Report* released on 31 October 2023 for information on the IP survey and proposed drilling program).

Since the IP survey, an Environmental Survey has been completed to identify any habitat or species likely to be impacted by the drilling program and no environmental impacts have been identified by both Federal and State Authorities.

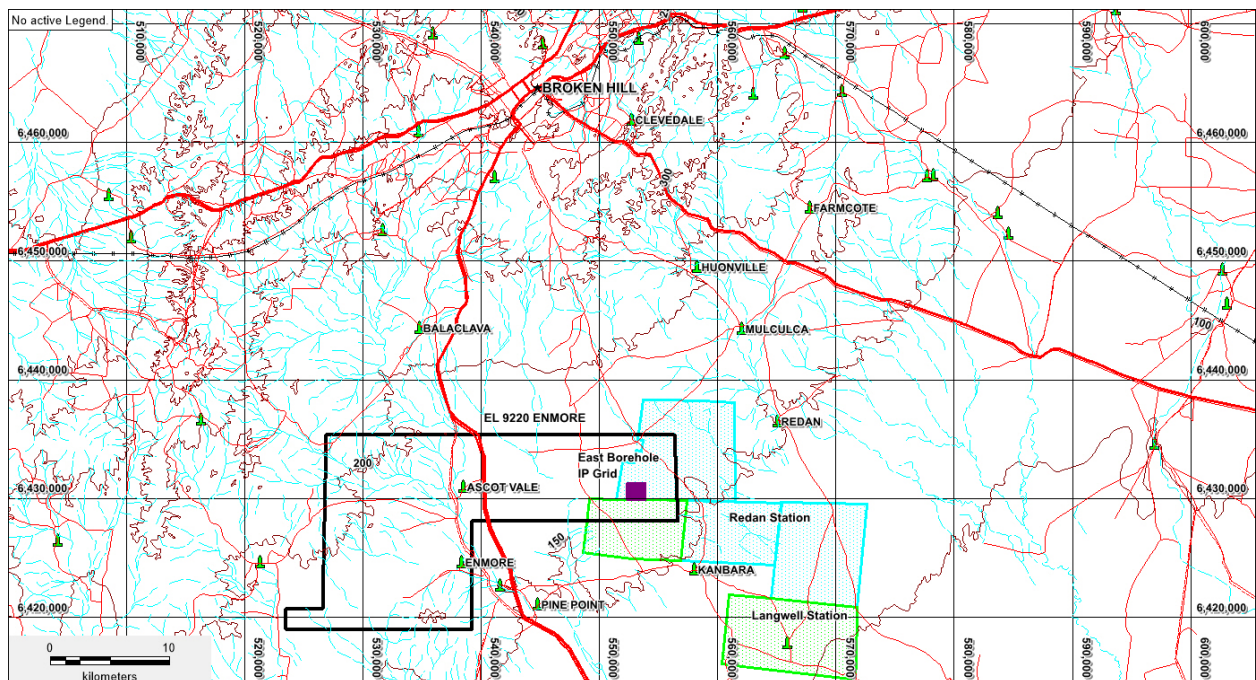


Figure 1: East Borehole Prospect Location within EL 9220 Enmore southeast of Broken Hill

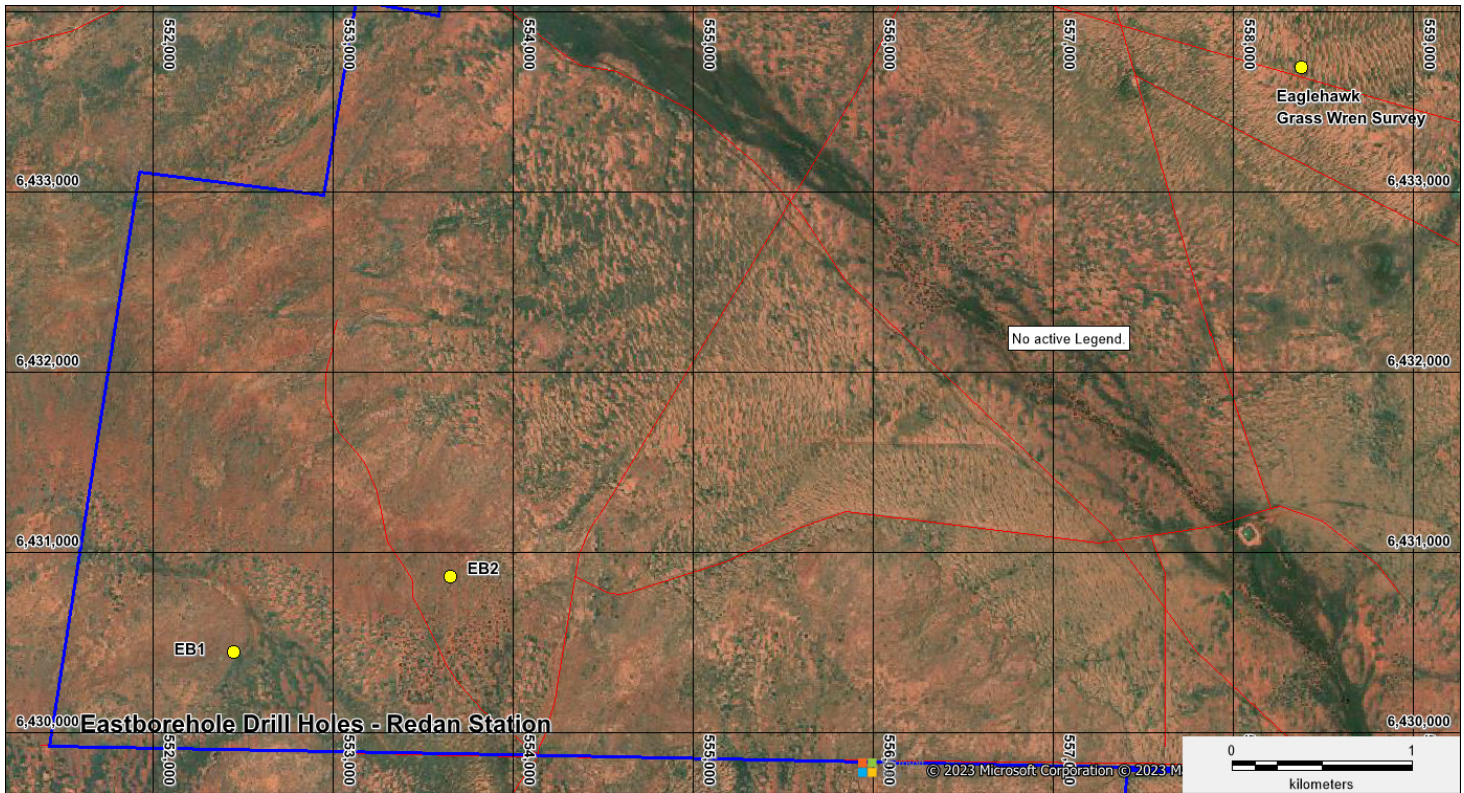


Figure 2: East Borehole Prospect showing the locations of drill holes EB1 and EB2 in the SW corner of the Redan Pastoral Lease (blue boundary line)

| Hole | East (MGA54) | North (MGA54) | Elev | Dip | Azim (MGA54) | Depth |
|------|--------------|---------------|------|-----|--------------|-------|
| EB1 | 552450 | 6430450 | 174 | -60 | 180 | 275 |
| EB2 | 553650 | 6430870 | 178 | -60 | 180 | 325 |

Table 1: East Borehole drill collars



East Borehole Drill Site EB1



East Borehole Drill Site EB2

Competent Person Statement

The information in the report above that relates to Exploration Results, Exploration Targets and Mineral Resources is based on information compiled by Mr Mark Derriman, who is the Company's Consultant Geologist and a member of The Australian Institute of Geoscientists (1566). Mr Mark Derriman has sufficient experience that is relevant to the style of mineralization and type of deposit under consideration and to the activities which he is undertaking to qualify as a Competent Person as defined in the 2012 Edition of the Australasian Code for Reporting of Exploration Results, Exploration Targets, Mineral Resources and Ore Reserves. Mr Mark Derriman consents to the inclusion in this report of matters based on his information in the form and context in which it appears.

Forward-Looking Statement

This document may include forward-looking statements. Forward-looking statements include, but are not limited to, statements concerning planned exploration program and other statements that are not historical facts. When used in this document, the words such as "could", "plan", "estimate", "expect", "intend", "may", "potential", "should" and similar expressions are forward-looking statements. Although Ausmon Resources Limited believes that its expectations reflected in these forward-looking statements are reasonable, such statements involve risks and uncertainties and no assurance can be given that actual results will be consistent with these forward-looking statements.

Authorised by:

Eric Sam Yue

Executive Director/Secretary

T: 02 9264 6988

E: office@ausmonresources.com.au