

# BOADICEA RESOURCES LTD



ASX ANNOUNCEMENT 22 June 2017

## BOADICEA RESOURCES LTD

ACN: 149 582 687

### ASX Announcement & Media Release

ASX Code: BOA

### Issued Capital:

48,969,672 Shares

Nil Options

### Postal Address:

Suite 2, 25 Koornang Road,  
Carnegie, Victoria, 3163,  
Australia

### Email:

Clarke Dudley – Managing Director  
cdudley@access.net.au

### Phone:

+61 3 9569 3467

### Fax:

+61 3 9572 3762

### Web:

[www.boadicearesources.com.au](http://www.boadicearesources.com.au)



## Exploration Programs Commence Nerramyne Project Group

### Highlights

- Exploration programs have commenced at the 100% owned Lake Nerramyne, Pine Grove and Hyde Soak Projects (collectively the Nerramyne Project Group) located 160km northeast of Geraldton in Western Australia.
- The Lake Nerramyne and Pine Grove Projects are considered prospective for platinum, palladium, copper and nickel, associated with interpreted layered mafic intrusive complexes. Reconnaissance exploration completed to date has confirmed the presence of mafic-ultramafic lithologies with favourable alkaline affinities. The current exploration program will comprise rock chip and grid soil sampling programs across four initial target areas.
- The Hyde Soak Project is located within the Perth Basin 15km west of the Lake Nerramyne Project and is being explored for clay hosted lithium mineralisation. This is a new project and was acquired on the basis of a significant coherent 20km x 8km +20ppm lithium anomaly defined by historic regional scale (2-4km spaced) GSWA soil sampling. The current planned exploration program will comprise a reconnaissance infill soil sampling program.
- The results for the above exploration programs are expected in August 2017.

**Boadicea Resources Ltd** (ASX: BOA) is pleased to provide an update on current exploration activities at its exciting Nerramyne Project Group located 160km northeast of Geraldton in Western Australia (Figure 1). The Nerramyne Project Group comprises the Lake Nerramyne and Pine Grove platinum, palladium, copper and nickel projects and the Hyde Soak lithium project.



Figure 1 - Nerramyne Project Group Location

## Lake Nerramyne & Pine Grove PGE & Ni-Cu Projects

The Lake Nerramyne and Pine Grove projects cover Archean gneisses and a geophysically interpreted dismembered layered mafic complex within the Narryer Terrane of the Yilgarn Craton. The basemetal potential was originally identified via a significant single point palladium (21ppb) and copper (228ppm) anomaly near Mummering Spring in regional geochemical sampling undertaken by the WA Geological Survey.

Follow up sampling in the Mummering Spring area by Boadicea located poorly outcropping mafic rocks and iron rich lateritic lag which returned encouraging results of up to 954ppm Cu, 158ppm Ni, and 26ppb Pd. Aeromagnetic data shows a magnetic feature coincident with these geochemical anomalies, interpreted to be a dismembered layered mafic intrusive complex potentially prospective for PGE's, nickel and copper.

Based on the success of the Mummering Springs target, additional targets have been selected across the Lake Nerramyne and Pine Grove Project areas, which in addition to Mummering Springs, will be targeted during the current program with grid based soil geochemistry, rock chip sampling and geological reconnaissance.

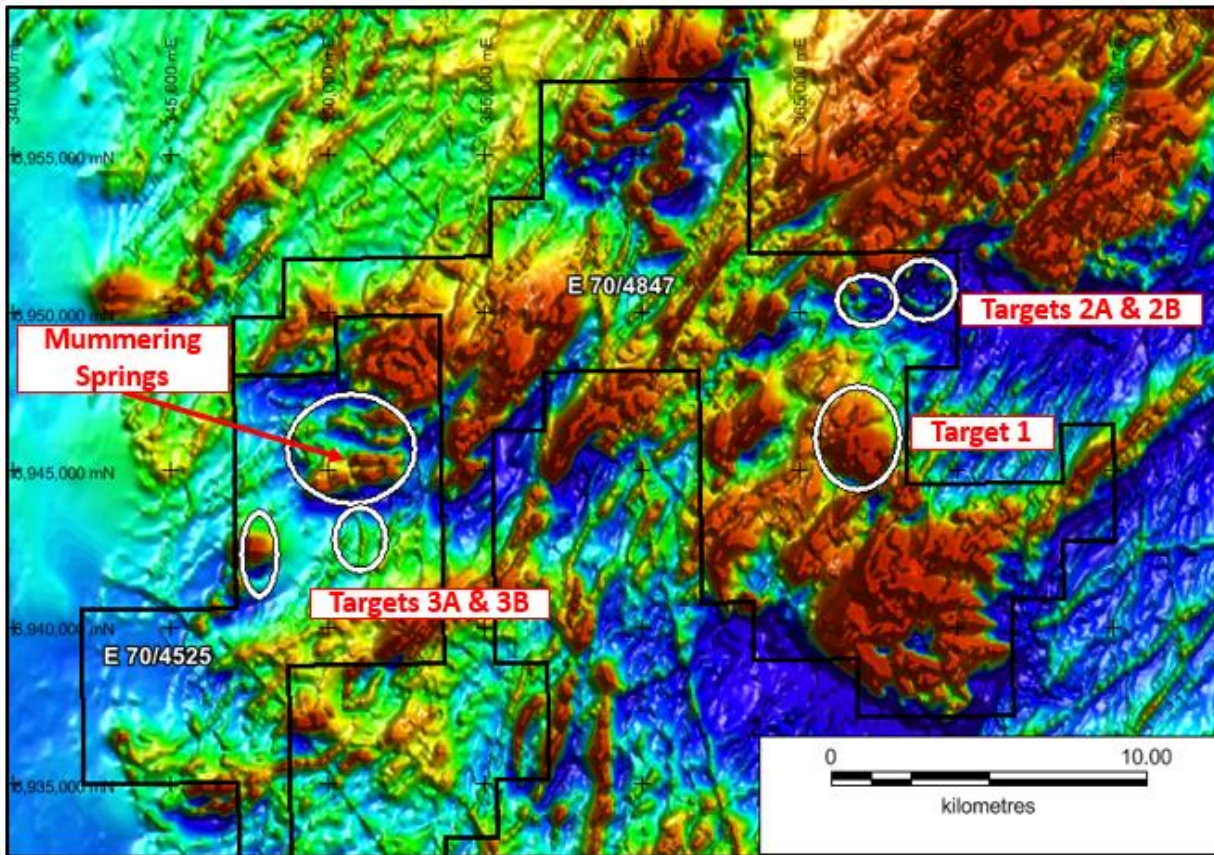


Figure 2 - Lake Nerramyne & Pine Grove Projects - Targets Over TMI Aeromagnetics

## **Hyde Soak Lithium Project**

The Hyde Soak Project is being explored for clay hosted lithium mineralisation and covers an area of 252km<sup>2</sup> within the Perth Basin, 15km west of the Lake Nerramyne Project.

Boadicea applied for this project area on the basis of a large, modest tenor but coherent, lithium soil anomaly defined by broad spaced (2-4km) WA Geological Survey regional soil sampling programs. At the +20ppm lithium contour, this anomaly is at least 20km long and 8 km wide and peaks at 45.5ppm (Figure 3) (see ASX Release of 19<sup>th</sup> May for further details).

Geological outcrop in the area is very limited, but it is considered that the existing anomaly is mostly likely clay hosted and associated with a partially buried ancient lake / river system, the remnants of which are visible in aerial photography.

The current planned exploration program will comprise a reconnaissance infill soil sampling program.

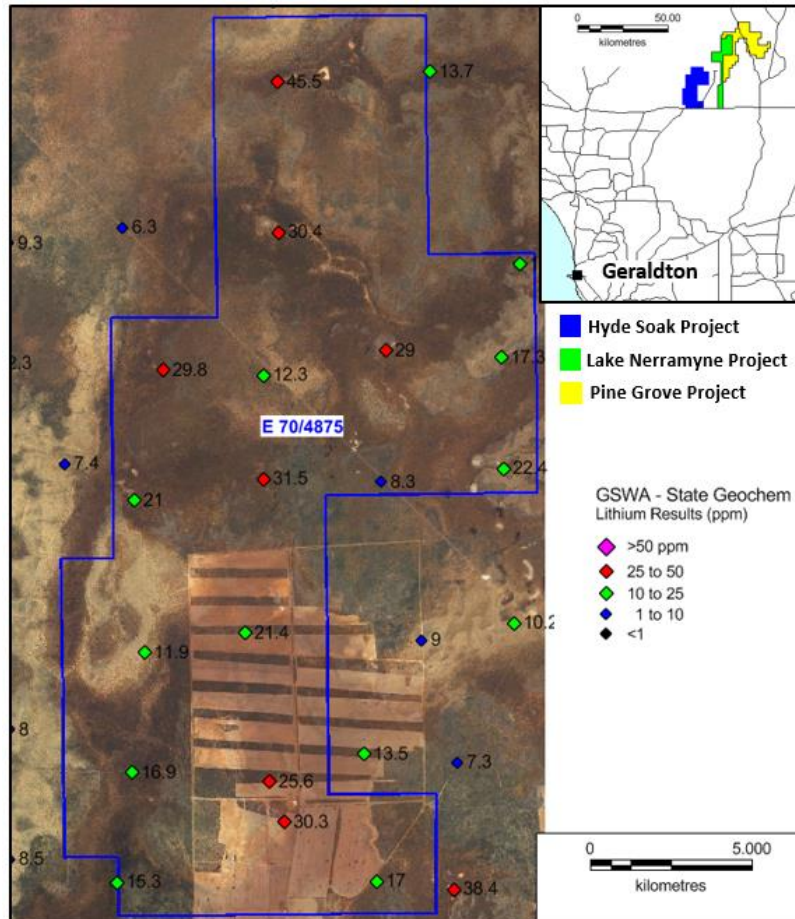


Figure 3 - Hyde Soak Lithium Project - GSWA Lithium Soil Geochemical Results Over Aerial Photography

## Contact Information

For further information, please contact

Clarke Dudley  
Managing Director  
Tel: (03) 9 569 3467

**Competent Persons Statement:**

*The information in this Announcement that relates to Exploration Results was compiled by Mr Simon Rigby, who is a part time consultant to the Company and a Member of the Australian Institute of Geoscientists. Mr Rigby has sufficient experience which is relevant to the style of mineralisation and type of deposit under consideration and to the activity being undertaken to qualify as a Competent Person as defined in the 2012 Edition of the 'Australasian Code for Reporting of Exploration Results, Minerals Resources and Ore Reserves'. Mr Rigby consents to the inclusion in the Report of the matters based on his information in the form and context in which it appears.*

**Disclaimer:**

Information included in this release constitutes forward looking statements. Often, but not always, forward looking statements can generally be identified by the use of forward looking words such as "may", "will", "expect", "intend", "plan", "estimate", "anticipate", "continue" and "guidance" or other similar words, and may include, without limitation, statements regarding plans, strategies and objectives of management, anticipated production or construction commencement dates and expected costs or production outputs.

Forward looking statements inherently involve known and unknown risks, uncertainties and other factors that may cause the company's actual results, performance and achievements to differ materially from any future results, performance or achievements. Relevant factors may include, but are not limited to, changes in commodity prices, foreign exchange fluctuations and general economic conditions, increased costs and demand for production inputs, the speculative nature of exploration and project development, including the risks of obtaining necessary licenses and permits and diminishing quantities or grades of reserves, political and social risks, changes to the regulatory framework within which the company operates or may in the future operate environmental conditions including extreme weather conditions, staffing and litigation.

Forward looking statements are based on the company and its management's assumptions made in good faith relating to the financial, market, regulatory and other relevant environments that exist and effect the company's business operations in the future. Readers are cautioned not to place undue reliance on forward looking statements.

Forward looking statements are only current and relevant for the date of issue. Subject to any continuing obligations under applicable law or any relevant stock exchange listing rules, in providing this information the company does not undertake any obligation to publicly update or revise any of the forward looking statements or advise of any change in events, conditions or circumstances on which such statement is based.