



**BOSS**  
RESOURCES LIMITED

# A New Era for Boss

ASX: BOE



- Exploration team with +20 million oz. gold discovery track record
- 3 high quality gold projects covering 1730km<sup>2</sup> & 100 strike kilometres of greenstone in Burkina Faso
- “Brownfields” Golden Hill Project – 1 million oz. exploration target – 12 drill ready geochem anomalies
- “Greenfields” Gourma Project – multi-million ounce exploration target
- Focused exploration programs and infrastructure established
- Excellent phase 1 drilling and geochem results – mineralisation intercepted in every hole to date
- Tight capital structure – top 50 shareholders hold 84%
- News flow imminent



Greenfields Gourma Project  
Tambiga Hill Prospect

ASX code:	BOE
Share Price (at 1/05/12) :	A\$0.08
Shares on Issue:	310 million
Unlisted Vendor Options (exp. July 2012):	55 million @ \$0.15
Unlisted Options (expire Oct 2013):	41.8 million @ \$0.12
Market Cap:	\$24 million
Cash (at 31/03/12) :	\$1.3 million
Greenvale Mining NL shares:	\$470K
Debt:	Nil

**691 Shareholders (at 1/05/12)**  
**Top 20 hold 69% of shares**  
**Top 50 hold 84% of shares**

### Largest Shareholders

Kingslane Pty Ltd	15.8%
Mining Investments Ltd	6.7%
Morou Francois Ouedraogo	5.8%
Precambrian PL (P. Kitto)	5.8%
Purple Bouganvillea PL (P. Williams)	5.8%
James David Taylor	5.5%
<b>Board &amp; Management</b>	<b>4.4%</b>

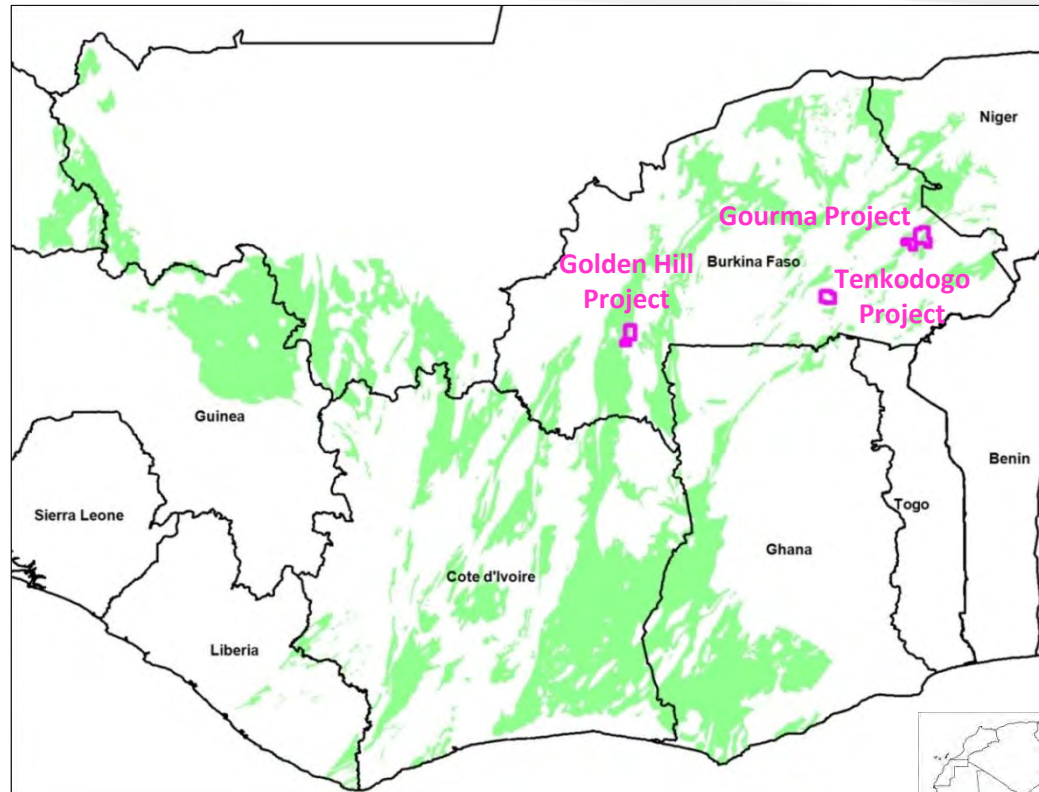


### Board of Directors

- Mr Robert Grover - Non-Exec. Chairman (BBus.: Company Director for 25 years)
- Mr Leigh Ryan - Managing Director (BSc.: Geologist - 25 years in Exploration)
- Mr Evan Cranston - Executive Director (BCom., LLB.: Corporate Lawyer & Director for 8 years – ex. Ampella)
- Mr Tom Grove - Non-Exec. Director (Company Director for 6 years as – ex. Stockbroker)
- Mr Grant Mooney - Company Secretary (CA.: Co. Sec. & Company Director for 13 years)

# Why Burkina Faso?

- Very under-explored: 22% of gold-rich West African Birimian Greenstone Belts but only 11% of the West African Birimian Gold Resources
- Stable democratic Government (since 1987)
- Government pro-mining / exploration with a modern mining code (since 2003)
- Clear tax policies and a sensible Govt. gold royalty (3-5%)
- Good infrastructure (sealed road network, grid power)
- Low discovery cost: 19.8Moz @ \$16/oz. (2010) with 6 new mines in last 6 years
- 2010 BF 5<sup>th</sup> largest African gold producer after Sth. Afr., Ghana, Tanz & Mali



Country	Exploration Expenditures (2010 US\$M) <sup>2</sup>	Gold found (Moz) <sup>3</sup>	Average Discovery Cost (2010 US\$/oz)
Burkina Faso	314	19.8	\$16
Cote d'Ivoire	205	2.6	\$78
Ghana	455	7.5	\$60
Guinea	104	-	-
Liberia	34	0.8	\$42
Mali	316	4.5	\$70
Niger	29	-	-
Senegal	206	7.5	\$28
Sierra Leone	60	2.5	\$25
<b>Total / Average (West Africa)</b>	<b>1,723</b>	<b>45.2</b>	<b>\$38</b>
<b>Total / Average<sup>4</sup> (Rest of World)</b>	<b>17,831</b>	<b>481</b>	<b>\$37</b>

Source: Analysis conducted by MinEx Consulting based on expenditure data provided by the Metals Economics Group © 2011

- Three superb gold projects – nine 100% owned permits (1730km<sup>2</sup>) all located on major regional structures
- “Brownfields” Golden Hill Project (470km<sup>2</sup>) on the Boni Shear Zone in the Houndé Greenstone Belt - 80km south of Mana (6.0Moz. ), 14km SE of Vindaloo (1.6Moz.), 10km north of Bondi (0.43Moz.) & 40km NE of new Tankoro discovery
- “Greenfields” Gourma Project (850km<sup>2</sup>) on the Gourma Shear Zone in the Fada N’Gourma Greenstone Belt - 80km SW of Samira Hill deposit (1.9Moz)
- “Greenfields” Tenkodogo Project (410km<sup>2</sup>) also on the Gourma Shear Zone 30km east of Kiaka (4.3Moz.)



- Managing Director (Leigh Ryan) – Geologist with 25 years gold exploration experience (8 years in East and West Africa – ex Resolute Mining, GCM, Mt Edon, Dominion Mining)
- Executive Director (Evan Cranston) – Corporate lawyer with over 8 years experience (ex corporate director of Ampella Mining Limited taking market cap from \$5 million to >\$600 million in 2 years)
- Exploration Manager (Roger Speers) – Geologist with 15 years gold exploration experience (10 years in North and East Africa – ex Acacia, AngloGold, Centamin)
- Country Manager (Jean Jacques Lasm) - >15 years of senior management experience, 10 years as a Company Director in Australia. B.Eng. (Electronic), Master of Technology. Master of Bus. Admin.
- 4 experienced African Geologists now in the field: Esayas Tesfagiorgis (12 years gold exploration experience in Eritrea - ex SubSahara, Nevsun), Ali Soro (10 years gold exploration experience in West Africa - ex Resolute), Oumar Traore (8 years geological experience in Burkina Faso), Abel Ouedraogo (3 years exploration experience in Burkina Faso)
- Office in capital city and field camps established in Golden Hill and Gourma projects

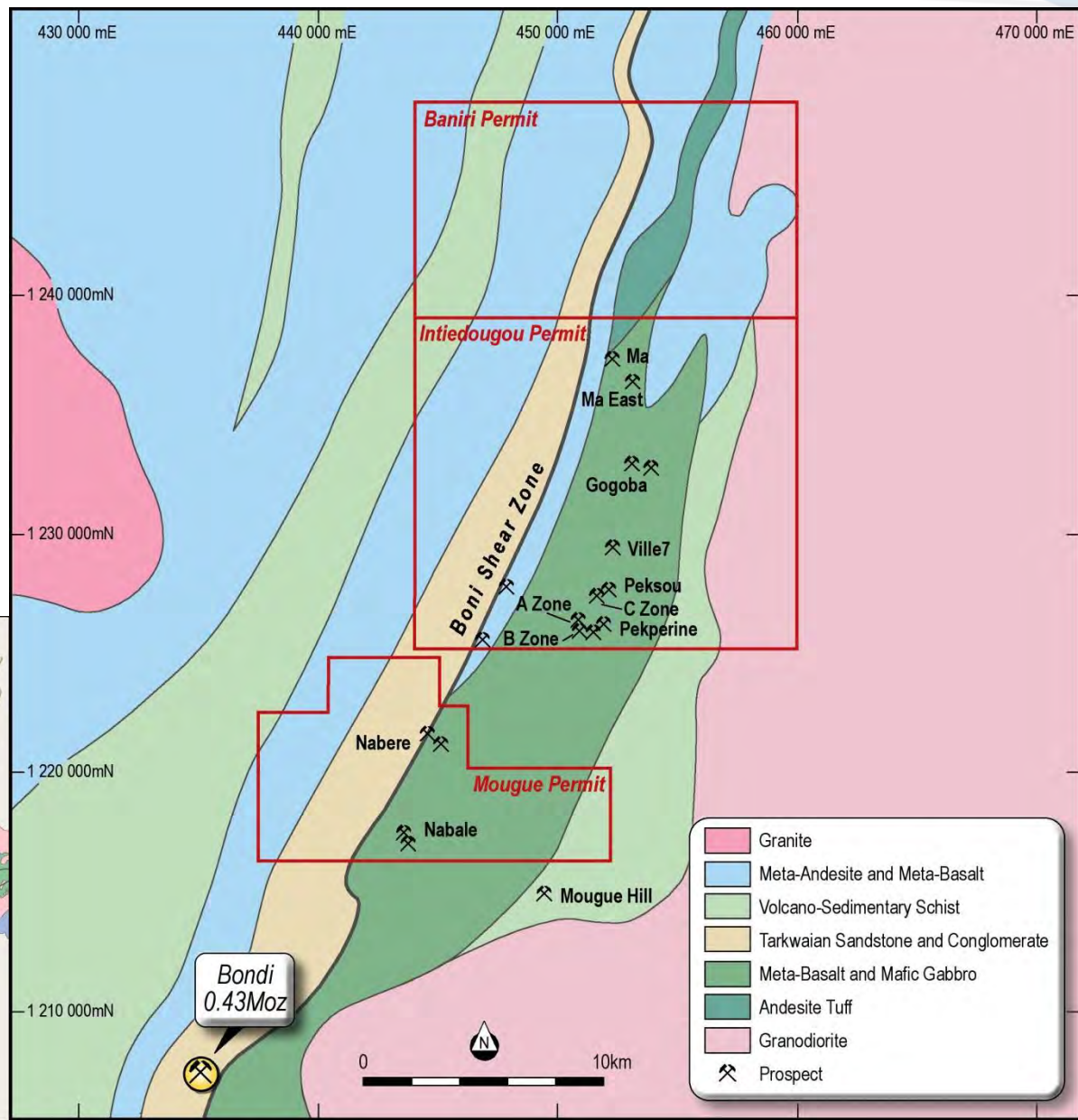
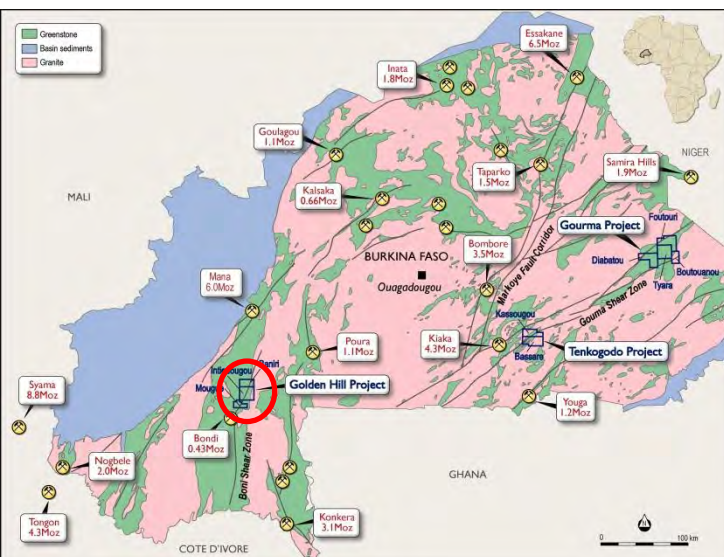


**Boss Exploration Team**

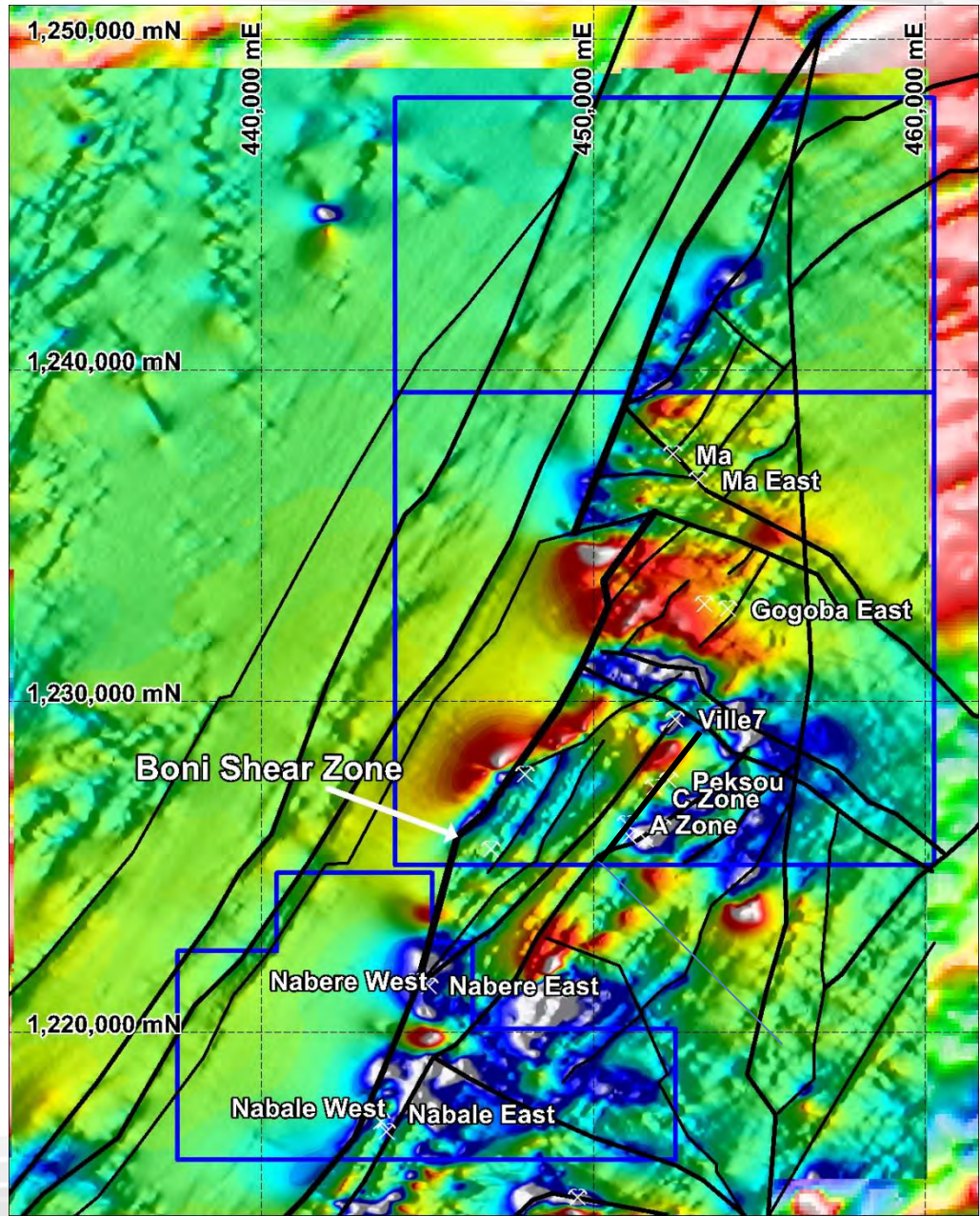


**Golden Hill  
Exploration Camp**

- 33 strike kilometres of highly prospective Birimian Greenstones
- Emerging new gold district (>2Moz)
- >20 active artisanal sites
- Previously Orezone Resources Inc. prior to GFC and their subsequent permit reduction from 3200km<sup>2</sup> in 2001 to 790km<sup>2</sup> in 2008
  - Bombore, Sega, Bondi retained
  - Golden Hill and Essakane divested

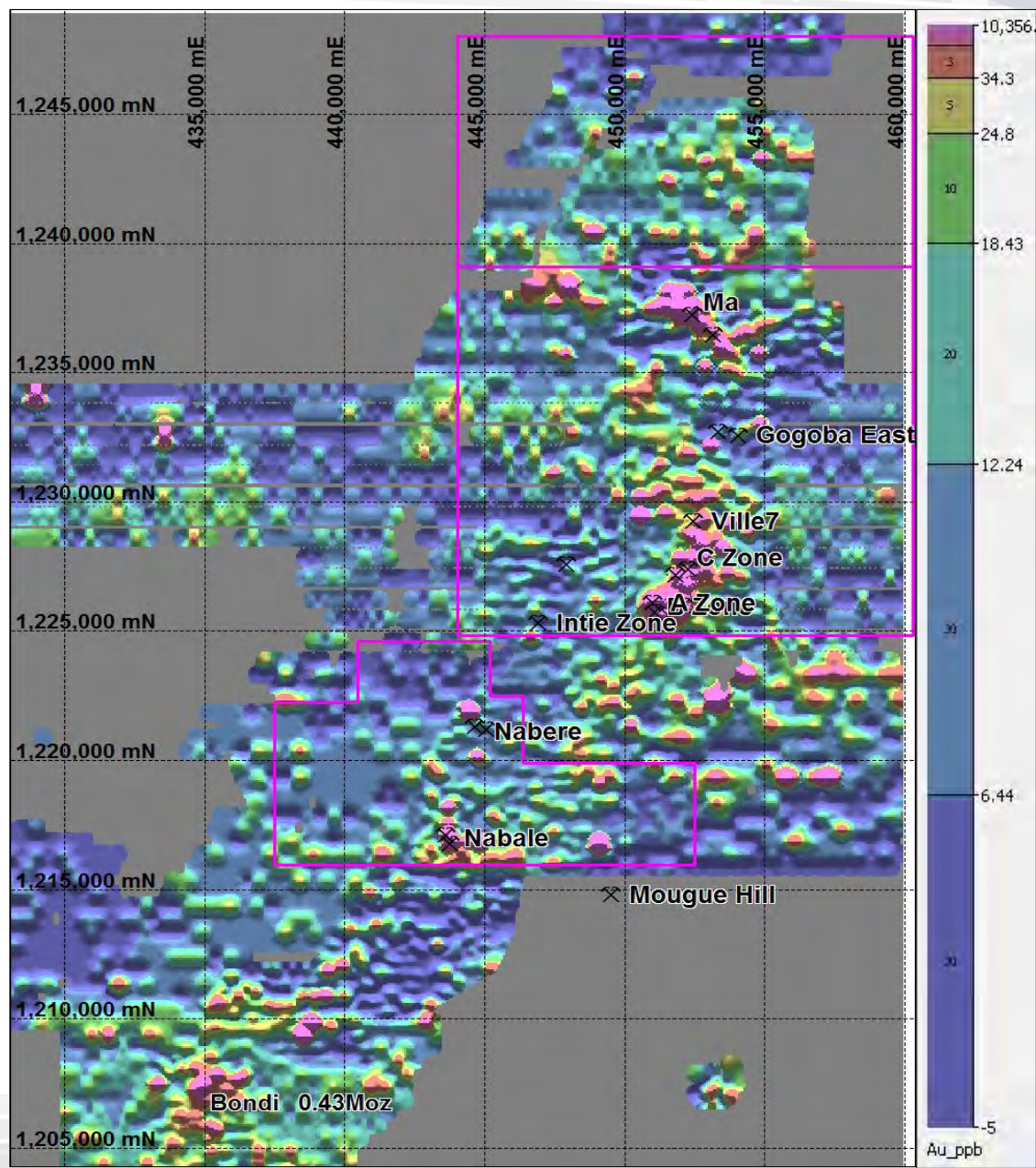


- Strike extensive mantle tapping structures - excellent source for mineralised fluids
- Strip of Tarkwaian sediments (host to major deposits in Ghana) confirm major structures
- Gold mineralisation associated with secondary structures (shears) and cross-cutting faults

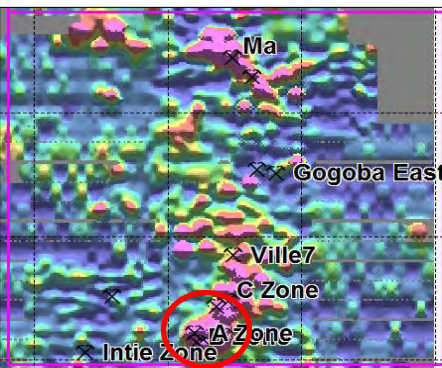
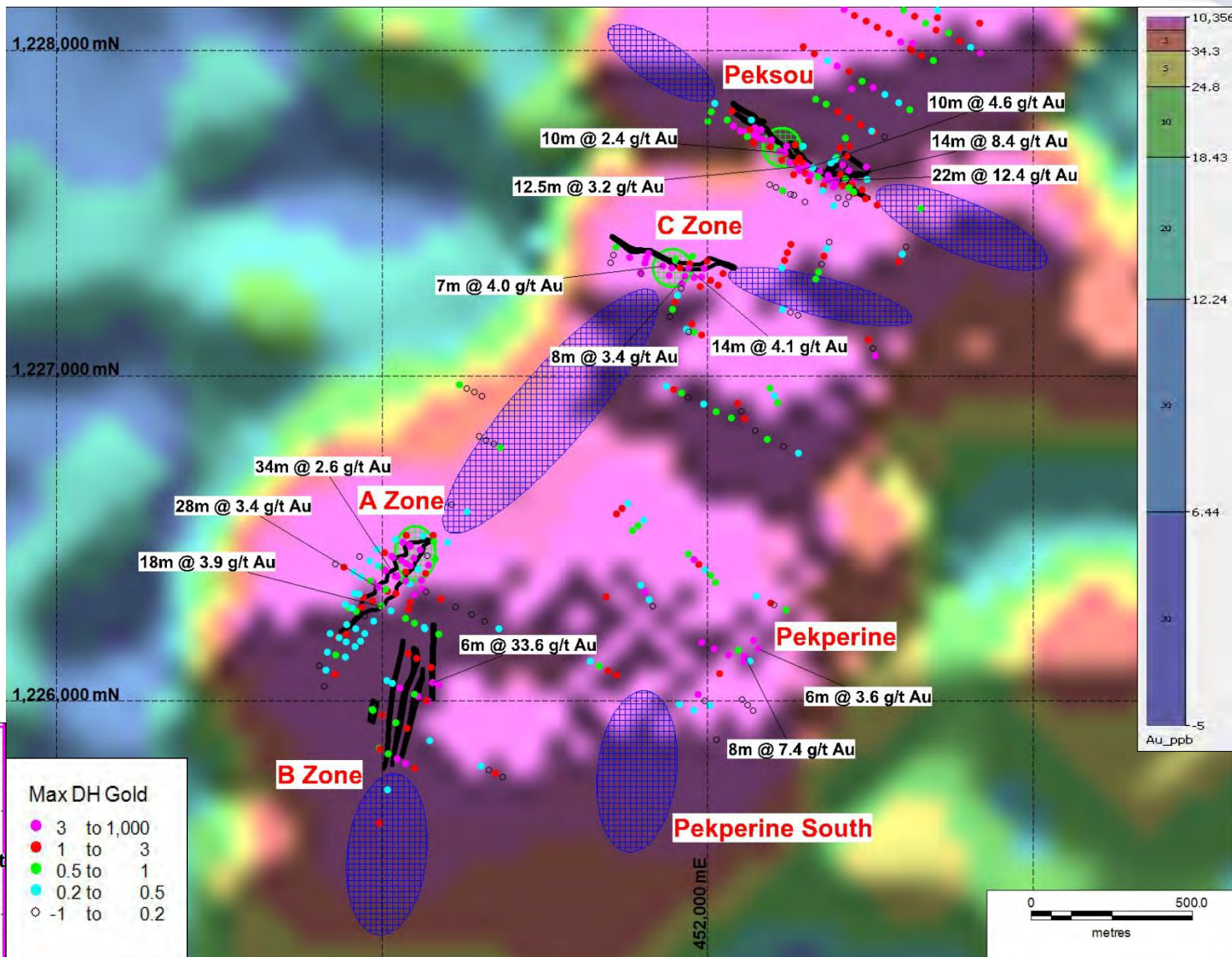


TMI aeromagnetic image  
(200m line spaced data)

- Previous exploration by Orezone Resources Inc. included over \$3.5m in geochemistry and drilling expenditure including 560 RC holes (30,093m) and 14 diamond holes (1,782m)
- Extensive gold in soil anomalism – 2 high quality gold anomalies: Intiedougou (>6km x 1.2km) and Ma (>4km x 1km)
- Both require systematic drilling
- Both anomalies larger than Bondi soil anomaly (0.43Moz. - Orezone)
- No drilling on most soil anomalies



- Orezone Resources Inc. drill intercepts over gold in soil image (ppb)
- Poorly drilled targeting high grade soil values (>1g/t Au)
- High grade ore shoots expected at the intersection of NE and WNW-trending structures (green circles)

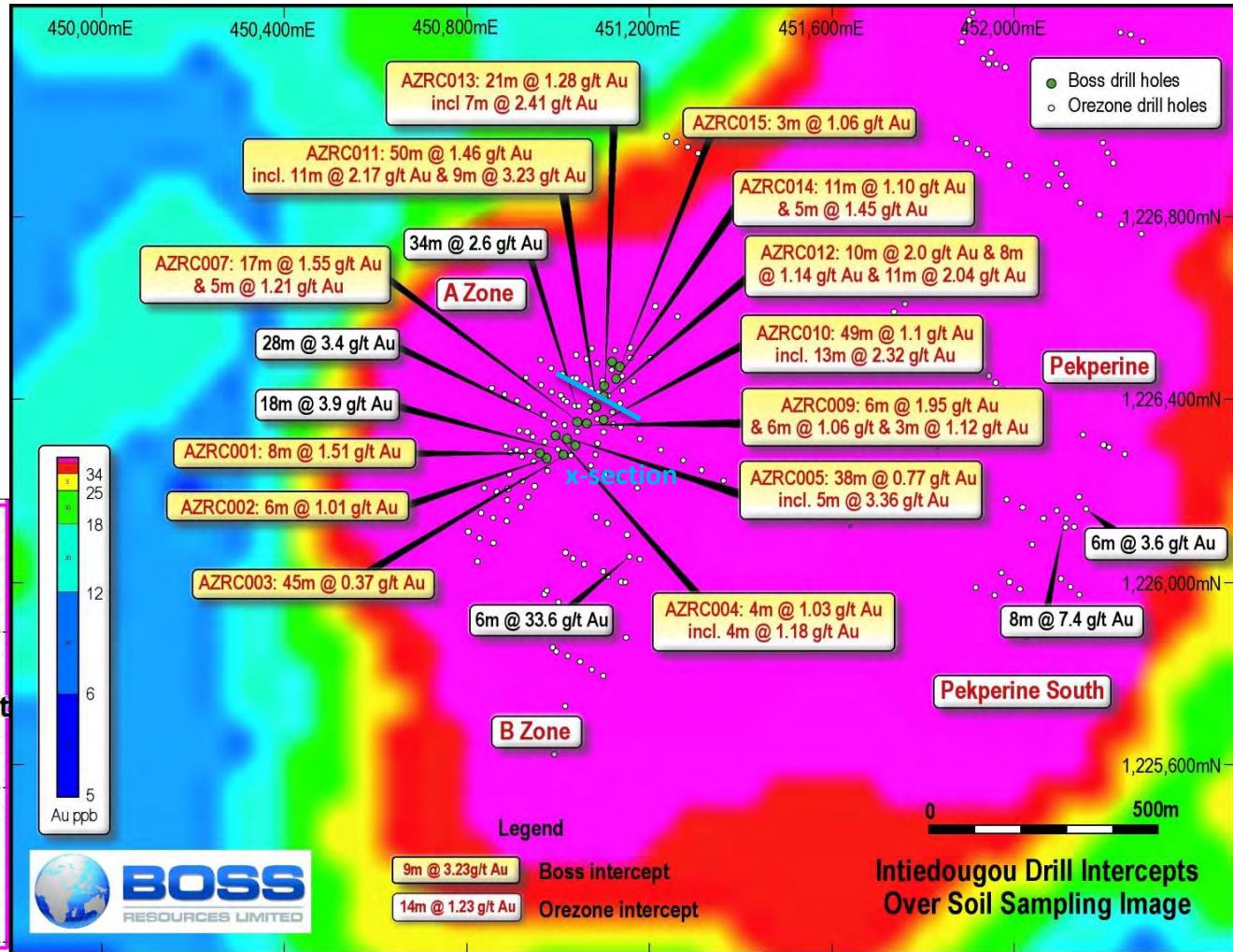
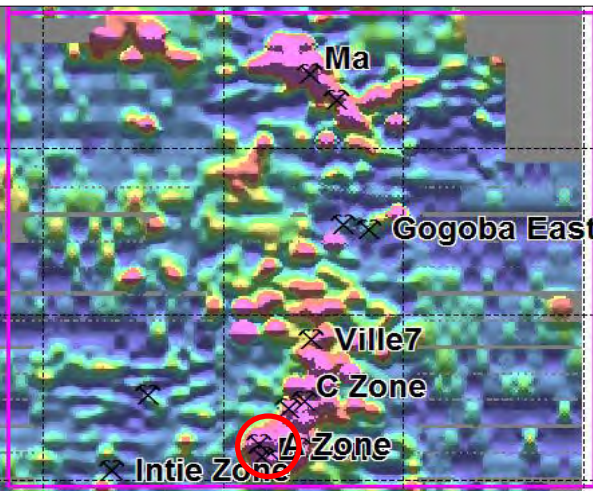


- All 15 Boss Resources A Zone RC holes intercepted gold mineralisation
- Impressive wide intercepts with internal high grade zones
- All drilling <60m vertical
- JORC compliant drill spacing

A Zone:

- 50m @ 1.46g/t Au from 9m including 9m @ 3.23g/t Au (AZRC011)
- 53m @ 1.05g/t Au from 35m including 13m @ 2.32g/t Au (AZRC010)
- 40m @ 1.02g/t Au from 7m including 17m @ 1.55g/t Au (AZRC007)
- 21m @ 1.28g/t Au from surface including 7m @ 2.41g/t Au (AZRC013)
- 18m @ 1.23g/t Au from surface including 10m @ 2.00g/t Au (AZRC012)

x-section location in blue





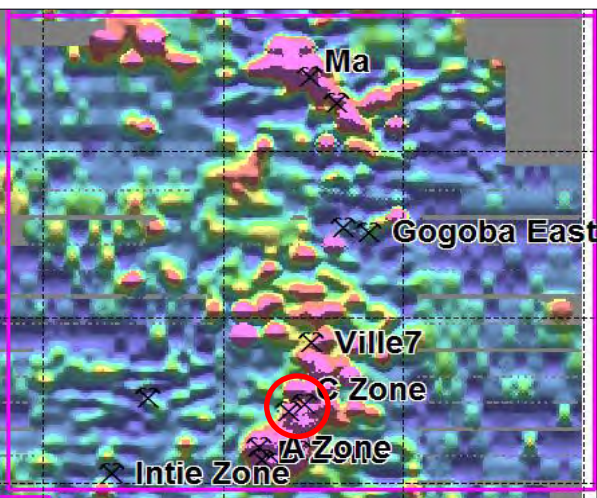
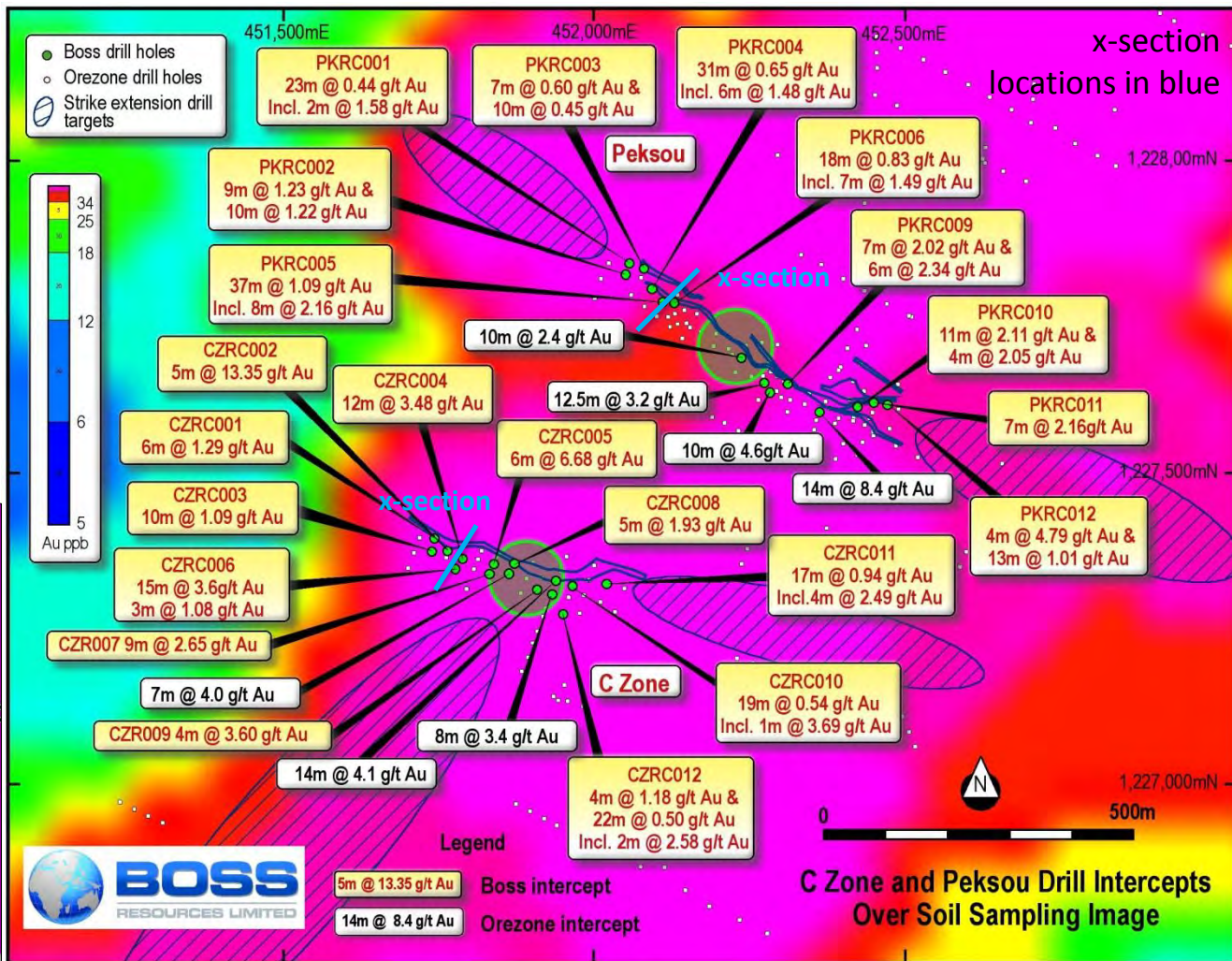
- All 24 Boss Resources C Zone and Peksou RC holes intercepted gold mineralisation
- High grades at C Zone
- Broad low grades at Peksou
- All drilling <60m vertical
- JORC compliant drill spacing

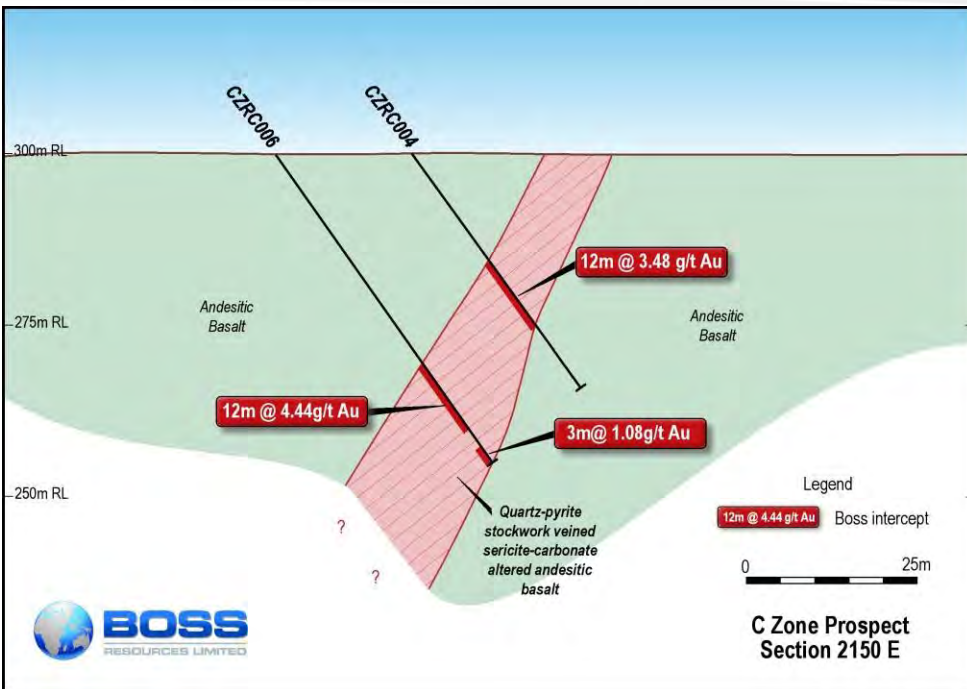
Peksou:

- 37m @ 1.1g/t Au from 22m including 8m @ 2.2g/t Au (PKRC005)
- 7m @ 2.0g/t Au from 6m and 6m @ 2.3g/t Au from 25m (PKRC009)
- 19m @ 1.4g/t Au from 7m including 11m @ 2.1g/t Au (PKRC010)
- 9m @ 2.2g/t Au from 24m including 4m @ 4.8g/t Au (PKRC012)

C Zone:

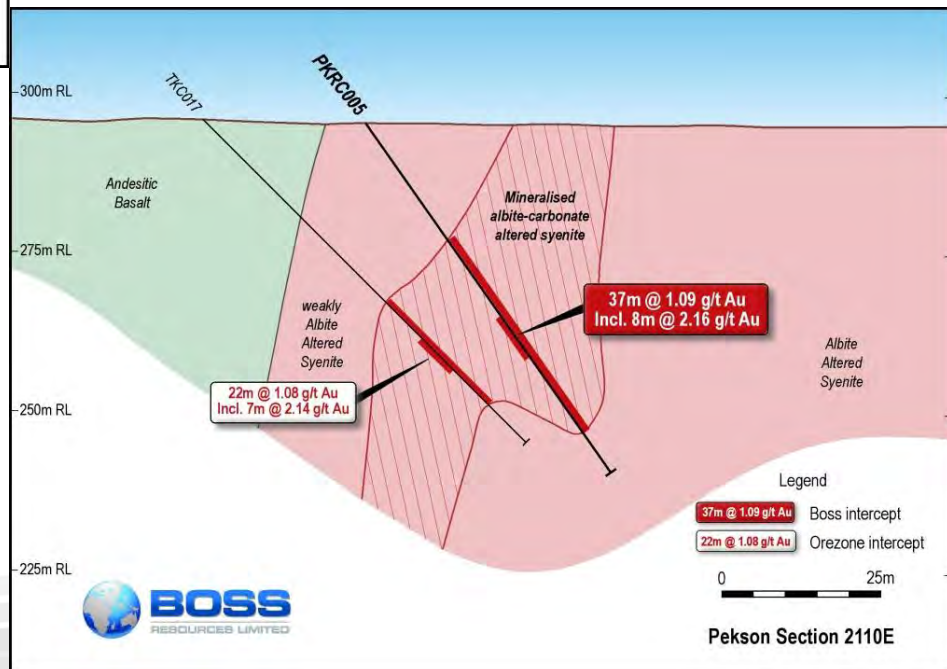
- 5m @ 13.4g/t Au from 20m (CZRC002)
- 12m @ 4.4g/t Au from 37m (CZRC006)
- 12m @ 3.5g/t Au from 19m (CZRC004)
- 6m @ 6.7g/t Au from 19m (CZRC005)
- 9m @ 2.7g/t Au from 37m (CZRC007)



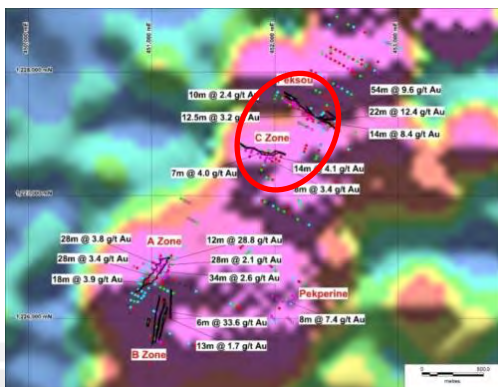


- Excellent potential down dip and along strike
- Only shallow drilling to date

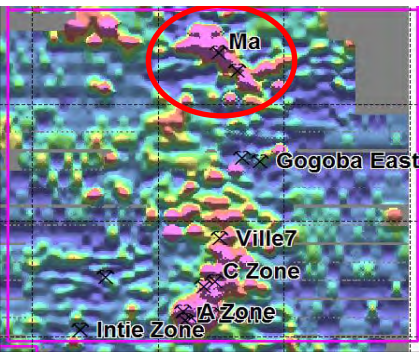
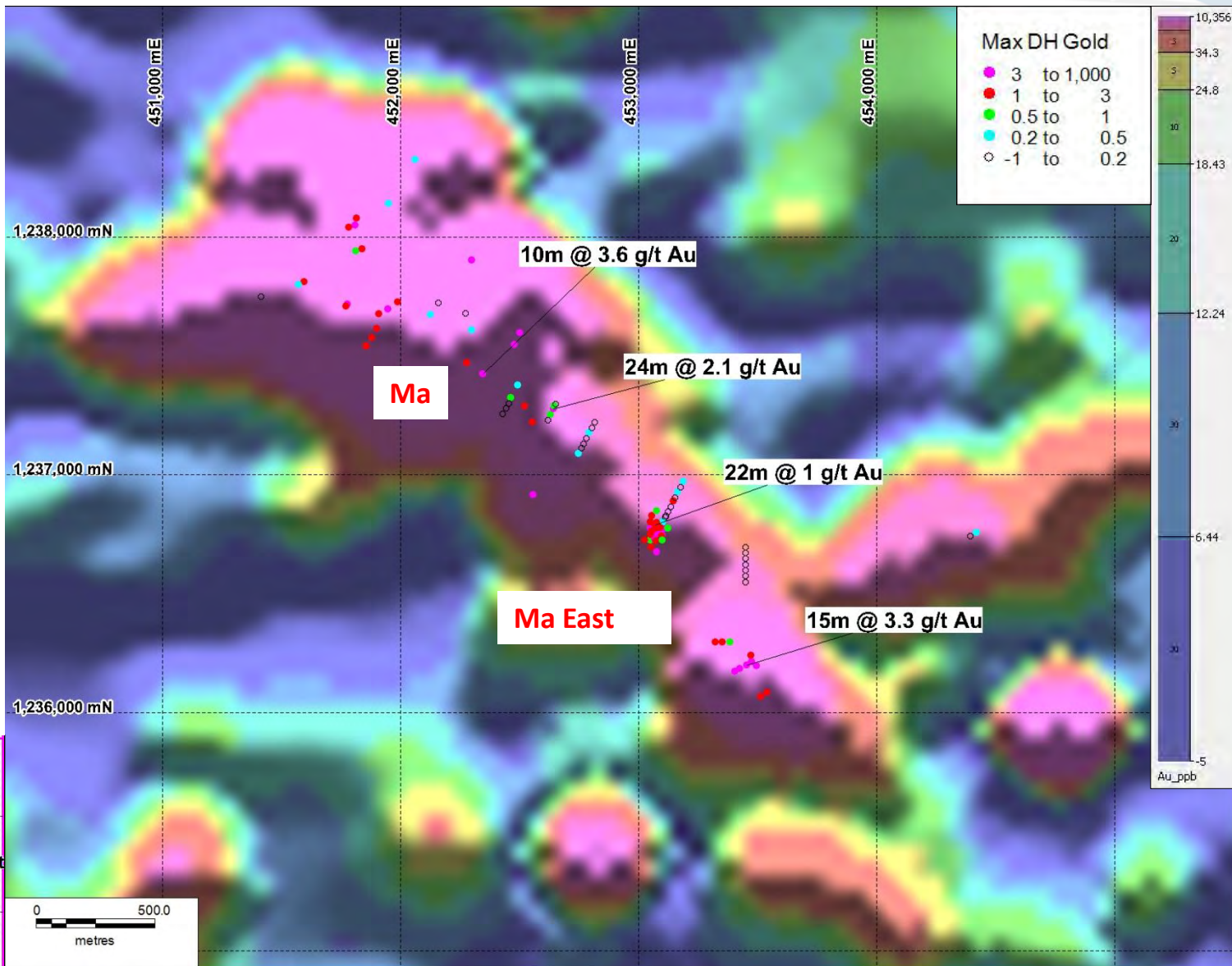
Peksou: NW-trending strongly albite-carbonate altered mineralised syenite



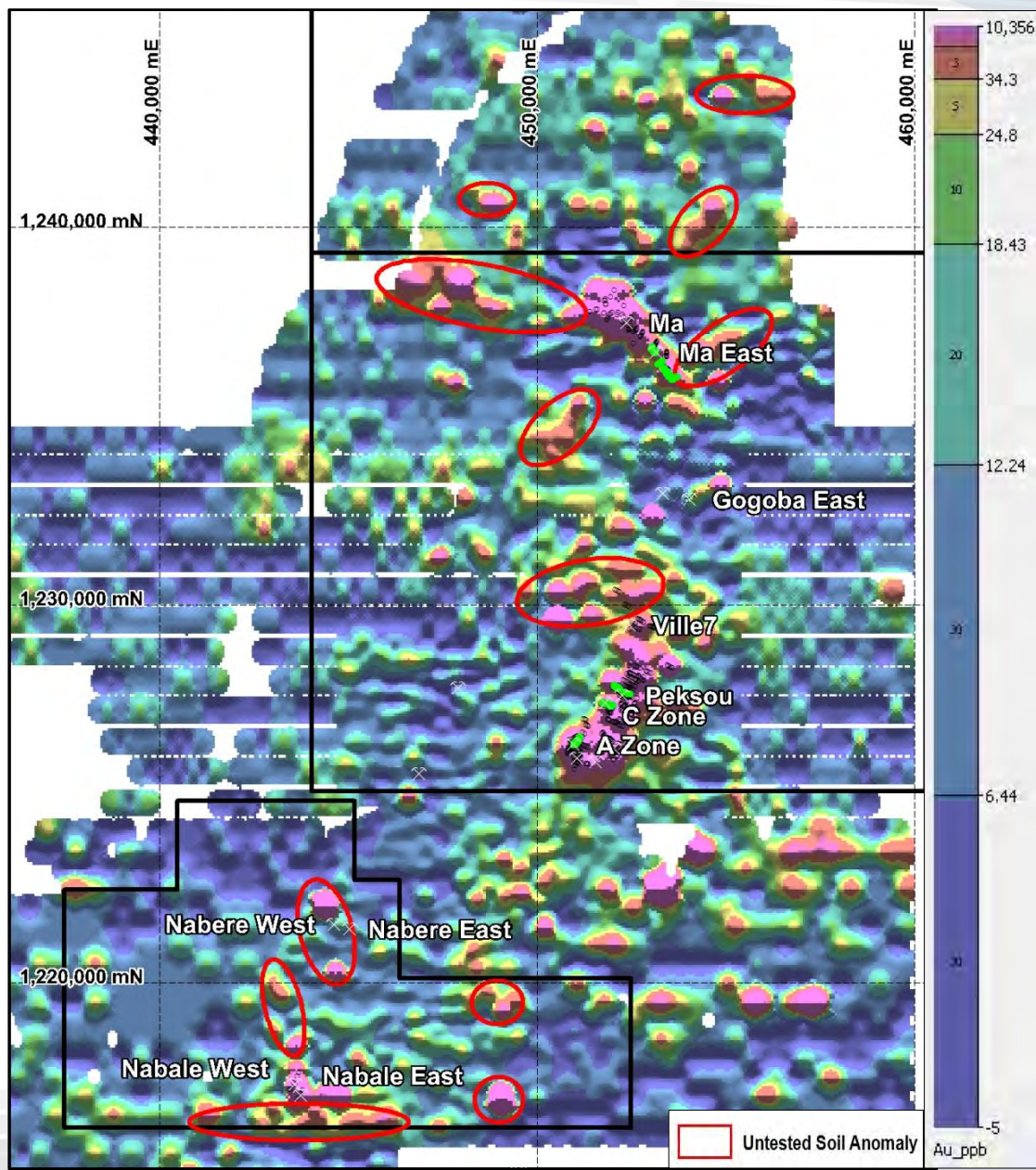
C Zone: WNW-trending quartz stockwork within strongly sericite-carbonate altered andesitic basalt



- Ma soil anomaly over 4km long and up to 1.5km wide
- Poorly explored with scattered drilling by Orezone
- Systematic drilling required
- **Scope for large gold resources** along strike and down dip of existing drilling
- Ma East RC drilling results pending (22 holes)



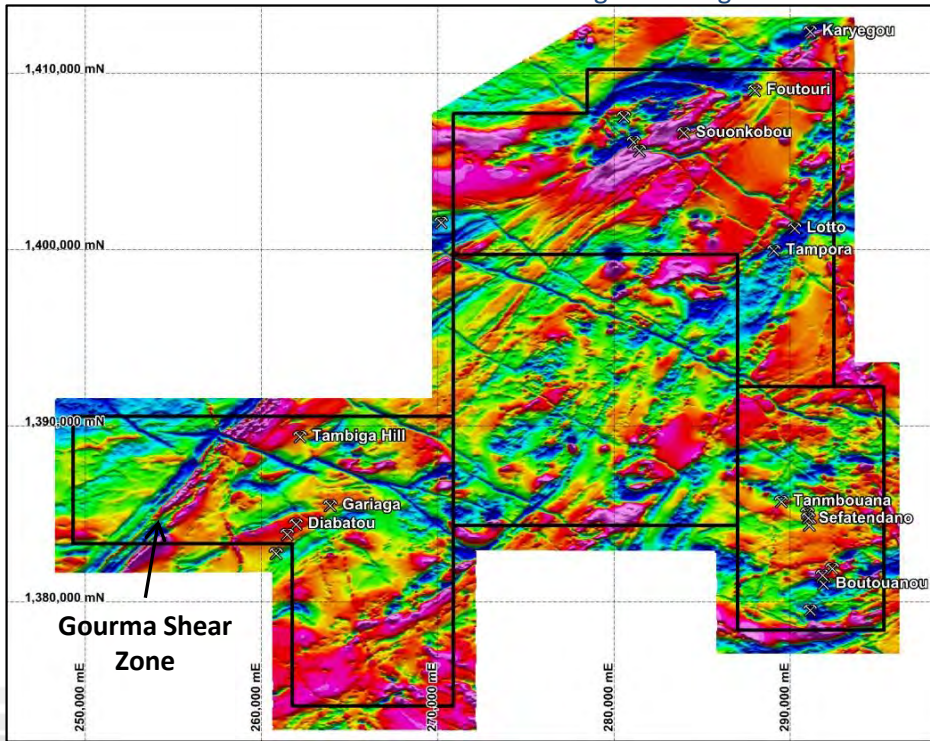
- Reprocessing of Orezone aeromagnetic / radiometric data
- Mapping and geology / regolith interpretation
- RAB drilling across 12 untested soil anomalies (red circles)
- RC drilling planned along strike of A Zone, B Zone, C Zone, Peksou and Pekperine mineralisation – AMS rig booked
- JORC compliant resource estimations
- 1 million oz. exploration target



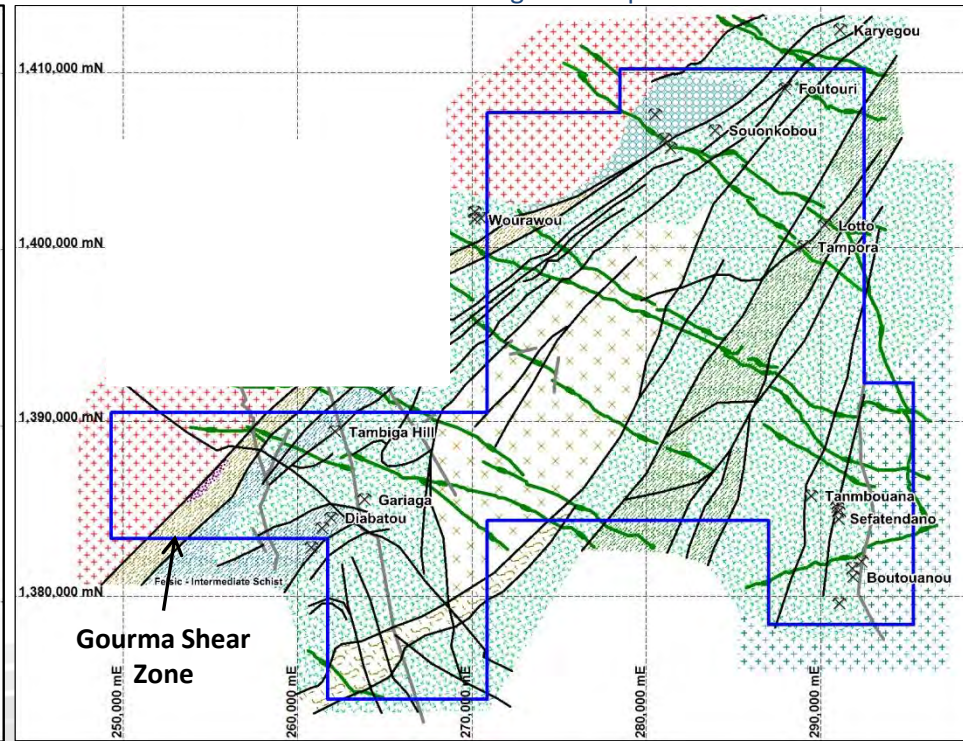
- No previous modern exploration
- 50 strike kilometres of prospective Birimian Greenstone units
- >30 active artisanal sites
- 100m line spaced aeromagnetic / radiometric survey completed
- Lithological, structural & regolith interpretations completed
- Clear potential for multi-million oz. gold deposits
- "Elephant Country"



Boss Resources Detailed Aeromagnetic Image

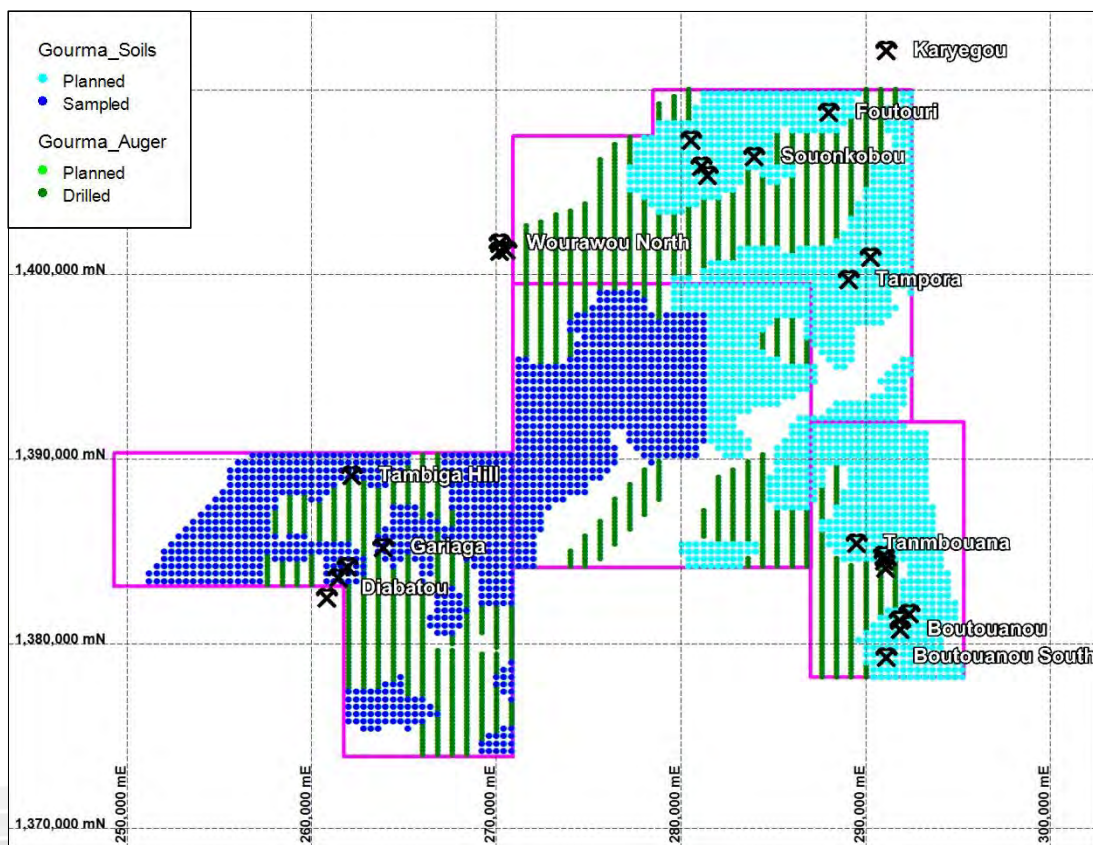


Boss Resources Geological Interpretation



- Soil geochemistry program 45% complete (gold + multi-element results ongoing)
- 1900 hole (14,000m) auger drilling program completed (gold + multi-element results ongoing)
- Early results indicate >20 strike kilometres of anomalism associated with the Gourma Shear Zone, Tambiga Hill, and Gariaga/Diabatou structures
- Aircore drilling planned across soil and auger anomalies
- RC drilling planned beneath artisanal workings within gold & gold pathfinder element anomalies

Soil sampling and auger drilling program completion status

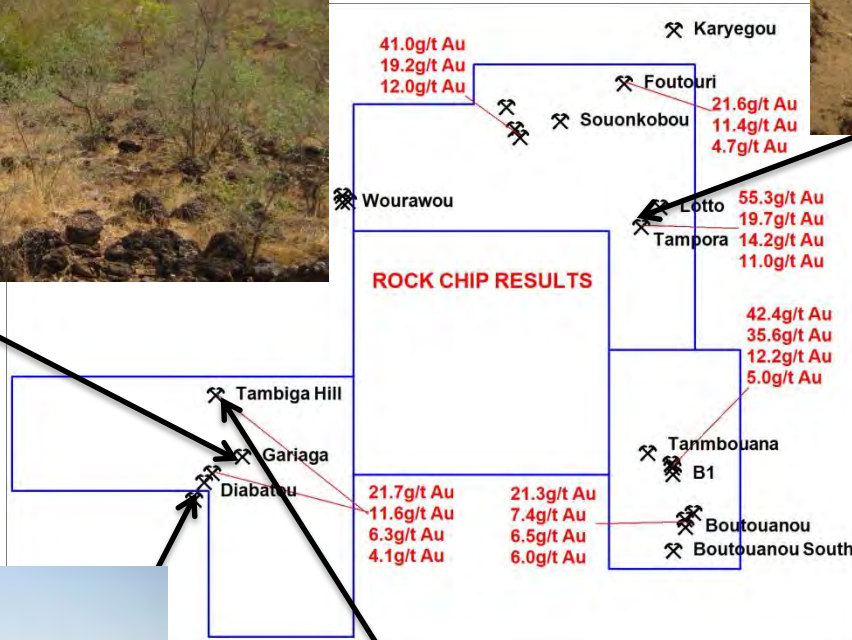




Gariaga : >1.3km x 800m



Tampora / Lotto : >1.8km x 500m



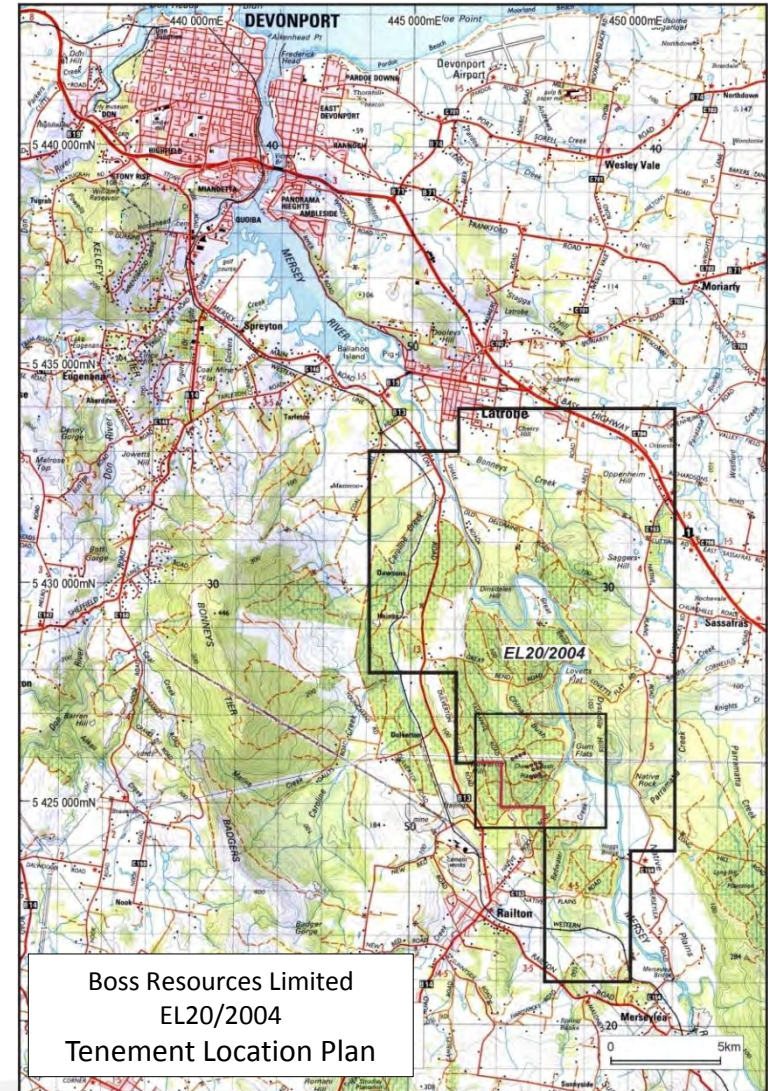
Diabatou : >1.6km x 400m



Tambiga Hill : >500m x 250m



- 61km<sup>2</sup> Exploration Licence 10km SE of Devonport
- Potential to host 20 million to 70 million tonnes of oil shale equating to between 14 million and 48 million barrels of oil
- Positive results from 500kg ore sample sent to the Fushun Mining Group oil shale refinery in China
- Similar chemical and physical properties to Fushun's oil shale but contains a higher 9.5% oil content and a lighter crude oil fraction
- Processing produces a benign, sterile ash product suitable for additive to nearby Railton cement product, or as fertilizer / soil improvement product
- Fushun Mining Group JV / sale negotiations continuing
- Diamond drilling program (300m) underway 2012



- Exploration team with +20 million oz. gold discovery track record
- 3 high quality gold projects covering 1730km<sup>2</sup> & +100 strike kilometres of greenstone in Burkina Faso
- Brownfields “Golden Hill” Project – 1 million oz. exploration target – 12 drill ready geochem anomalies
- Greenfields “Gourma” Project – multi-million ounce exploration target - +20km anomalism in first permit
- Focused exploration programs and infrastructure established
- Excellent phase 1 drilling and geochem results – mineralisation intercepted in every hole to date
- Tight capital structure – top 50 shareholders hold 84%
- News flow imminent
- Superb investment opportunity



Boutouanou gold in quartz



Nabale gold in quartz



Sefatendano gold in  
quartz

## ***Forward Looking Statements***

*This presentation may contain certain statements and projections provided by or on behalf of Boss Resources Limited (BOE) with respect to the anticipated future undertakings. These forward-looking statements reflect various assumptions by or on behalf of BOE. Accordingly, these statements are subject to significant business, economic and competitive uncertainties and contingencies associated with exploration which may be beyond the control of BOE which could cause actual results or trends to differ materially, including but not limited to price fluctuations, exploration results, reserve and resource estimation, environmental risks, physical risks, legislative and regulatory changes, political risks, project delay or advancement, ability to meet funding requirements, factors relating to property title, native title and aboriginal heritage issues, dependence on key personnel, share price volatility, approvals and cost estimates. Accordingly, there can be no assurance that such statements and projections will be realised. BOE makes no representations as to the accuracy or completeness of any such statement of projections or that any forecasts will be achieved.*

*Additionally, BOE makes no representation or warranty, express or implied, in relation to, and no responsibility or liability (whether for negligence, under statute or otherwise) is or will be accepted by BOE or by any of their respective officers, directors, shareholders, partners, employees, or advisers as to or in relation to the accuracy or completeness of the information, statements, opinions or matters (express or implied) arising out of, contained in or derived from this presentation or any omission from this presentation or of any other written or oral information or opinions provided now or in the future to any interested party or its advisers. In furnishing this presentation, BOE undertakes no obligation to provide any additional or updated information whether as a result of new information, future events or results or otherwise. Nothing in this material should be construed as either an offer to sell or a solicitation of an offer to buy or sell securities. It does not include all available information and should not be used in isolation as a basis to invest in Boss Resources Limited.*

## ***Competent Person Statement***

*The information in this presentation that relates to Exploration Results is based on information compiled by Mr Leigh Ryan who is a member of the Australian Institute of Geoscientists and a full time employee of the company.*

*Mr Ryan has sufficient experience relevant to the style of mineralisation and type of deposit under consideration and to the activity he is undertaking to qualify as a Competent Person as defined in the 2004 Edition of the "Australasian Code for Reporting of Exploration Results, Mineral Resources and Ore Reserves". Mr Ryan consents to the inclusion in the report of the matters based on information in the form and context in which it appears.*