



SOVEREIGN GOLD
COMPANY LIMITED

Sovereign Gold Company Limited
ACN 145 184 667

Level 2, 131 Macquarie Street
Sydney NSW 2000
Tel: +61 2 9251 7177
Fax: +61 2 9251 7500

Contact

Nick Raffan CEO

email: nraffan@sovereigngold.com.au

Latest News

www.sovereigngold.com.au

Directors / Officers

John Dawkins AO
Nick Raffan
Michael Leu
Peter Meers
Jacob Rebek

ASX Symbol: SOC

Qualifying Statement

The information in this Report that relates to Exploration Information is based on information compiled by Michael Leu who is a member of the Australian Institute of Geoscientists.

Mr Leu is a qualified geologist and is a director of Sovereign Gold Company Limited.

Mr Leu has sufficient experience, which is relevant to the style of mineralisation and type of deposit under consideration and to the activity, which he is undertaking to qualify as a Competent Person as defined in the 2004 Edition of the Australasian Code for Reporting of exploration Results, Mineral Resources and Ore Resources. Mr Leu consents to the inclusion in this announcement of the Exploration Information in the form and context in which it appears.

Targets

The potential quantity and grade of exploration targets is conceptual in nature, there has been insufficient exploration to define a Mineral Resource and it is uncertain if further exploration will result in the determination of a Mineral Resource.

Good gold grades continue at Martin's Shaft

Highlights

- Diamond drill hole No 4 intersected 18 metres of mineralisation from 53m downhole to 70m at an average grade of 3.51 grams per tonne gold.
- Intersection includes 7m averaging 7.47 g/t with a 3m section at an average grade of 10.86 g/t gold.
- At 46m downhole, the assay included 1.1% antimony that shows potential for a by-product credit.
- Over the high-grade gold intersection of 7m, silver ranged between 1.13 g/t and 67.8 g/t (+2.0 ounces); indicating a potential by-product credit.

Details

The initial diamond program was only for 1,200 metres, and this work is nearing completion.

The infill diamond program of 11 holes has been completed at Martins Shaft. Diamond holes have also been completed at Gracie, Little Gracie, and the drill rig has moved to Wilson's Creek.

Gold and Silver Intercepts Diamond Drill Hole, SGRDD004, Martins Shaft 18 metres at 3.51 g/t gold includes 7 metres at 7.47 g/t gold¹

DDH-4 Sample	From	To	Gold Au	Silver Ag
	Metres		grams per tonne (g/t)	
D453	52	53	0.69	2.66
D454	53	54	5.61	2.70
D455	54	55	0.02	0.23
D456	55	56	0.83	0.94
D457	56	57	0.42	1.67
D458	57	58	2.47	1.13
D459	58	59	19.60	67.80
D460	59	60	5.27	1.57
D461	60	61	7.71	5.05
D462	61	62	6.09	14.25
D463	62	63	3.58	17.20
D464	63	64	7.55	6.93
D465	64	65	0.47	0.17
D466	65	66	0.33	0.14
D467	66	67	0.85	2.49
D468	67	68	0.33	0.19
D469	68	69	0.65	0.24
D470	69	70	0.87	0.85
AVERAGE (over 18m)			3.51	7.01

¹ Australian Laboratory Services Pty Ltd, QC Certificate of Analysis - BR11098686

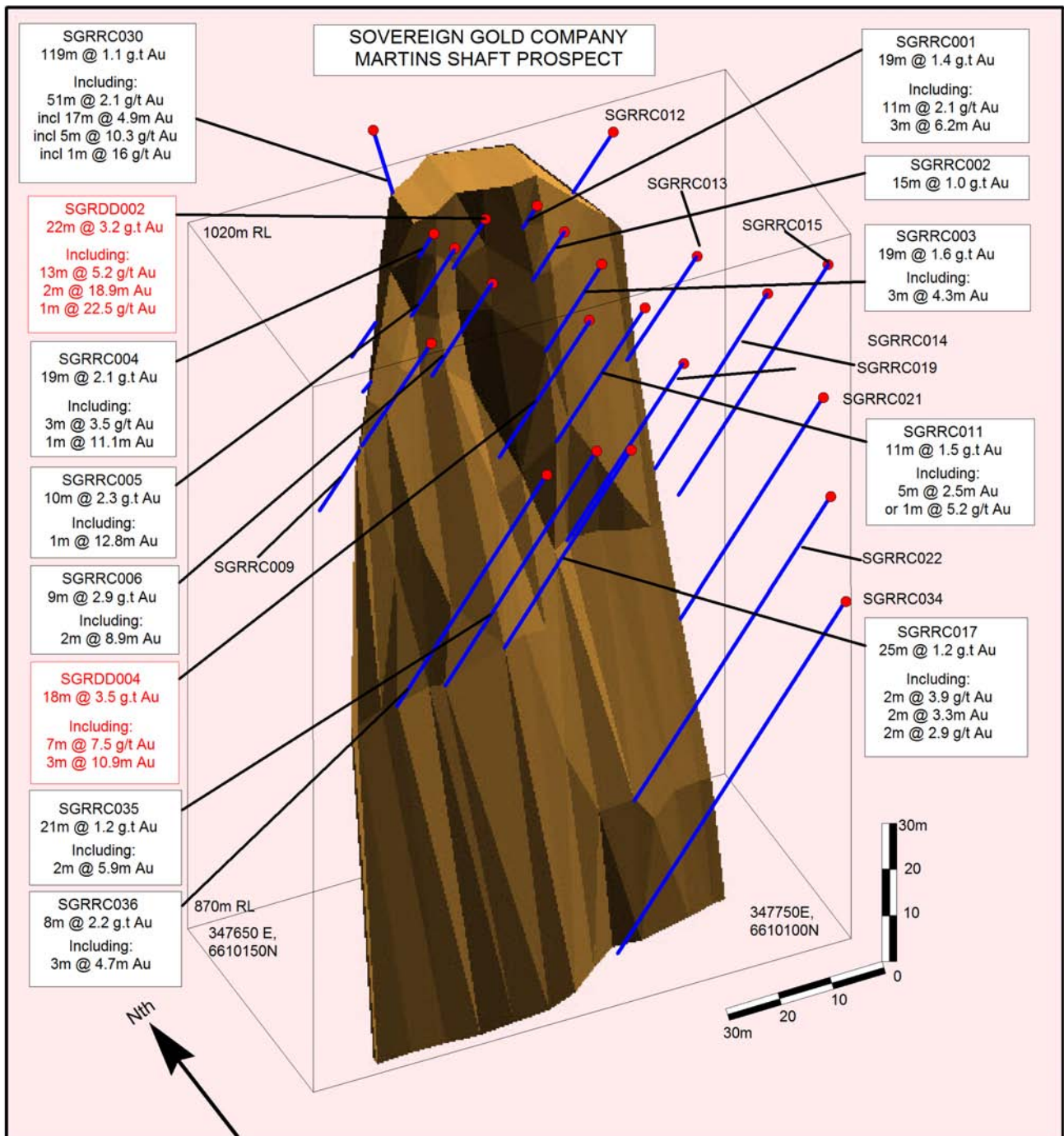


A second RC drilling program is being planned and will mainly consist of shallow holes of around 60 metres to better define the extent of mineralisation at Little Gracie, Gracie and Wilsons Creek, and to test as yet un-drilled targets.

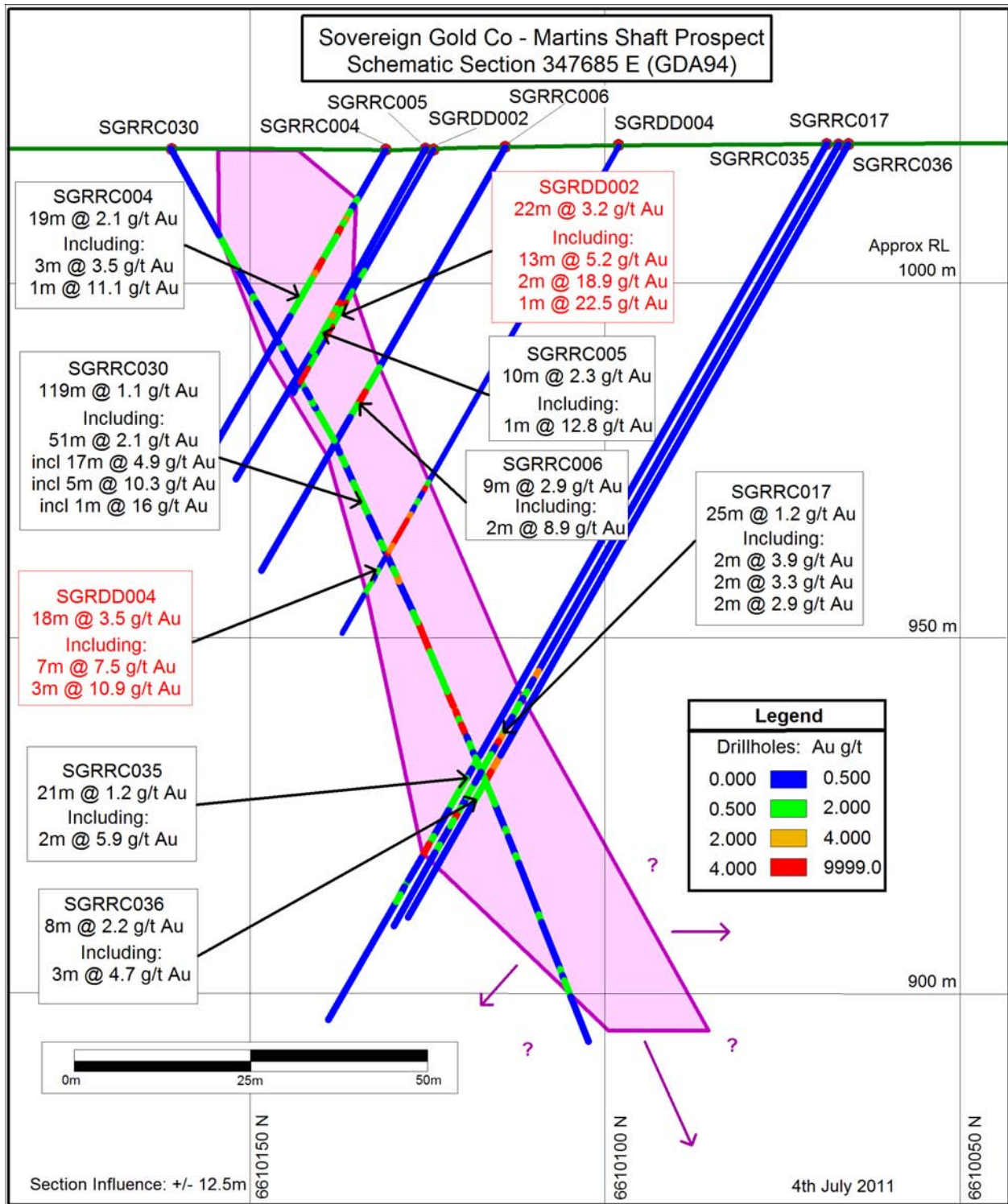
There will be a second round of deeper drilling at Martin's Shaft to test for grade and width of mineralisation with depth. For this purpose, Sovereign will contract a dual-purpose drill rig with capacity to pre-collar to a depth of 200-250 metres followed by a diamond tail. These holes are unlikely to exceed 300 metres downhole depth.

Sovereign has acquired a handheld XRF analyser that will speed up the exploration process targeting anomalous pathfinder elements, arsenic, antimony and bismuth in soil and stream sediment. In addition to accelerating the pace of exploration, the handheld XRF analyser will significantly reduce the cost of assays, through field evaluation prior to laboratory analysis. Only assays supported by QC Certificates of Analysis are reported.

A low level aeromagnetic and radiometric survey is scheduled to be completed by the end of July and combined with surface geochemistry is expected to outline new targets for further exploration and drilling.



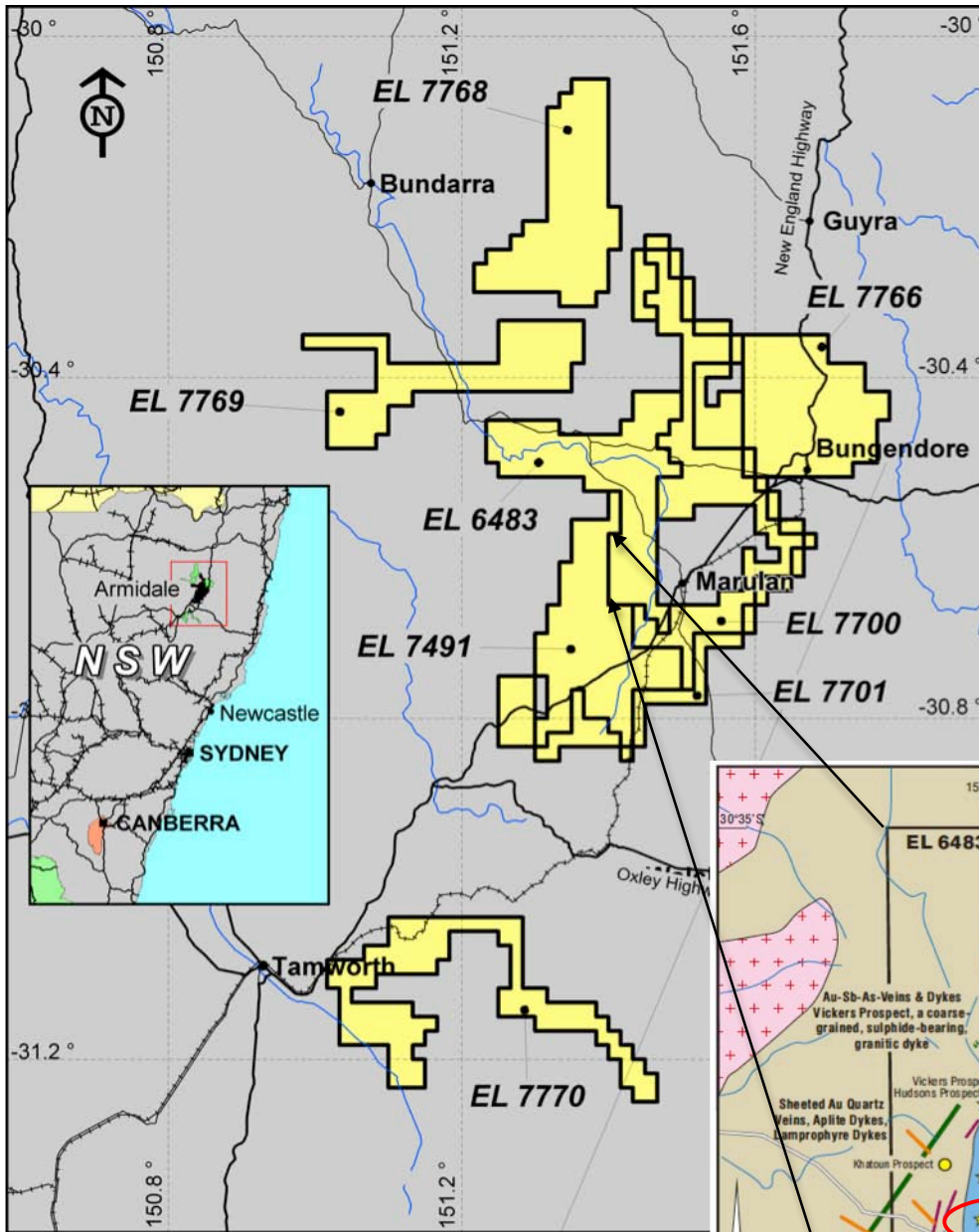
Mineralised lode constructed with solid shading -
gold mineralisation potential present over several kilometres of strike and at depth



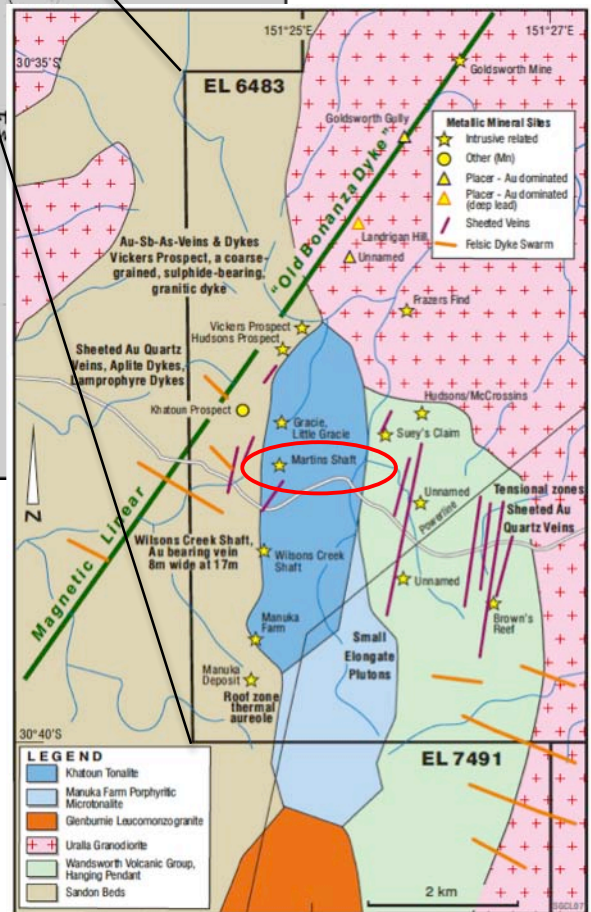
Cross-section of Gold mineralised lode at Martins Shaft.
Plot of Diamond Drill Hole SGRDD004 in relation to Reverse Circulation drill holes.

For further information please contact:
Henry Kinstlinger,
Investor Relations, Sovereign Gold Company Limited

Telephone: +61 2 9251 7177



Sovereign Gold Rocky River-Uralla Tenements



Martins Shaft