



SOVEREIGN GOLD COMPANY LIMITED

Sovereign Gold Company Limited
ACN 145 184 667

Level 2, 131 Macquarie Street
Sydney NSW 2000
Tel: +61 2 9251 7177
Fax: +61 2 9251 7500

Contact
Michael Leu CEO

email: mleu@sovereigngold.com.au

Latest News
www.sovereigngold.com.au

Directors / Officers
John Dawkins AO
Michael Leu
Peter Meers
Jacob Rebek

ASX Symbol: SOC

Qualifying Statements

The information in this Report that relates to Exploration Information is based on information compiled by Michael Leu who is a member of The Australasian Institute of Mining and Metallurgy and the Australian Institute of Geoscientists.

Mr Leu is a qualified geologist and is a director of Sovereign Gold Company Limited.

Mr Leu has sufficient experience, which is relevant to the style of mineralisation and type of deposit under consideration and to the activity, which he is undertaking to qualify as a Competent Person as defined in the 2004 Edition of the Australasian Code for Reporting of Exploration Results, Mineral Resources and Ore Resources. Mr Leu consents to the inclusion in this announcement of the Exploration Information in the form and context in which it appears.

ASX Release
7th March 2013

Deep Drilling Program – April start

- Tracked mounted diamond rig to commence deep drilling in April
- First Target 730 metre long gold-bearing structure
- Additional priority drill targets in EL7491 and EL7768.

Sovereign Gold's co-operation partner Jiangsu Geology and Engineering (**SUGEC**) has purchased a track mounted deep drilling (600 metres) diamond drill rig with a low environmental footprint. **A deep drilling program consisting of several targets is scheduled to commence in mid-April.**

In co-operation with SUGEC, around 200km² has been covered with detailed geological mapping coupled with nearly 6,000 geochemical (soils and rock) samples and geophysical surveys (ground magnetics and Induced Polarisation – IP). This vast amount of data has been digitised and maps produced. Areas of coinciding geochemical, geological (alteration and structural mapping) and geophysical anomalies have been discovered. Four key targets are scheduled to commence deep diamond drilling in April.

The first deep drill target is the 730 metre long gold-bearing structure discovered in late 2012. Sovereign Gold drilled four shallow holes along this structure. The holes have proved the existence of both high grade (up to 12.35g/t Au) and wide (12 metres downhole) gold mineralisation at shallow depths ideal for open-cut. Results included 2.72g/t Au over 5m from 7-12m downhole including 7.8g/t Au over 1m and 12.35g/t Au over 0.5m in diamond drill hole SGRDD036 and 1.07g/t Au over 12m from 3-15m downhole including 4.93g/t over 0.6m in SGRDD037¹. This gold mineralisation occurs within the same large felsic dyke system hosting Martins Shaft.

The second scheduled drill target is an area of anomalous gold mineralisation located 1.4km to the north of the 730 metre long structure. This further discovery confirms the large scale of the Rocky River-Uralla IRGS and supports Sovereign Gold's target model of several satellite mineralised zones (resource blocks) of up to 100,000 ounces Au along the mineralised structures in the field, with a global target of hosting 0.5 – 2Moz Au resource².

Two newly discovered areas of anomalous base metals, especially copper, in EL7768 will also be deep drilled. Geological mapping, geochemistry and IP surveys have indicated potential mineralisation extending over 1,000 metres in one of these areas.

SUGEC is only six months into a 2-year exploration-funding program and already significant discoveries have been made. Exploration will soon extend from 2 ELs to a total of 7 ELs (2,040km²), many with quality gold targets virtually unexplored for 30-40 years. SUGEC's cooperation will undoubtedly unlock resources in the New England area of NSW.

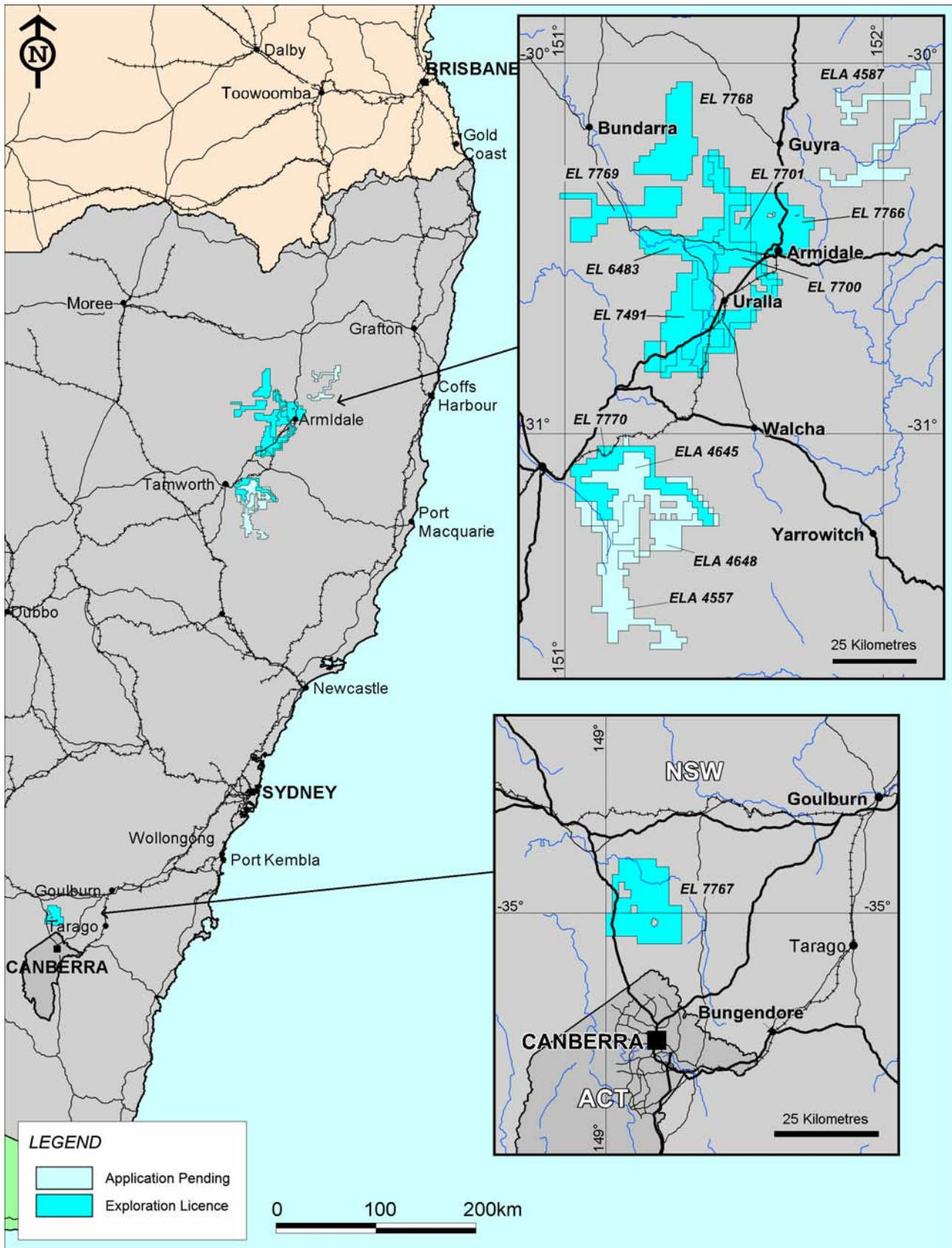
These discoveries are in EL7491 and EL7768 currently under a Cooperation Agreement with SUGEC who are contributing \$4 million on these tenements as part of a total exploration funding commitment of \$21 million on 10 tenements where Sovereign Gold has a majority interest.

For further information please contact:

Michael Leu, CEO, Telephone: +61 2 9251 7177

¹ ASX 30th January 2013

² **Exploration Targets:** The potential quantity and grade of exploration targets is conceptual in nature. There has been insufficient exploration to define a Mineral Resource and it is uncertain if further exploration will result in the determination of a Mineral Resource.



Sovereign Gold Tenement Portfolio