



## SOVEREIGN GOLD COMPANY LIMITED

**Sovereign Gold Company Limited**  
ACN 145 184 667

Level 2, 131 Macquarie Street  
Sydney NSW 2000  
Tel: +61 2 9251 7177  
Fax: +61 2 9251 7500

**Contact**  
Michael Leu CEO

email: [mleu@sovereigngold.com.au](mailto:mleu@sovereigngold.com.au)

**Latest News**  
[www.sovereigngold.com.au](http://www.sovereigngold.com.au)

**Directors / Officers**  
John Dawkins AO  
Michael Leu  
Peter Meers  
Jacob Rebek

**ASX Symbol: SOC**

### Qualifying Statements

The information in this Report that relates to Exploration Information is based on information compiled by Michael Leu who is a member of The Australasian Institute of Mining and Metallurgy and the Australian Institute of Geoscientists.

Mr Leu is a qualified geologist and is a director of Sovereign Gold Company Limited.

Mr Leu has sufficient experience, which is relevant to the style of mineralisation and type of deposit under consideration and to the activity, which he is undertaking to qualify as a Competent Person as defined in the 2004 Edition of the Australasian Code for Reporting of Exploration Results, Mineral Resources and Ore Resources. Mr Leu consents to the inclusion in this announcement of the Exploration Information in the form and context in which it appears.

**ASX Release**  
5<sup>th</sup> June 2013

## Drilling confirms mineralisation widening with depth in EL7491

- **First deep diamond drill hole (ZK001) establishes mineralised zone is widening with depth**
- **Ongoing Deep drilling to assess full potential of 1.55km identified gold-bearing structure**
- **Joint venture partner, SUGEC, funding \$2m exploration program on EL 7491 to March 2014**

Diamond drilling continues on the 1.55km long gold-bearing structure, discovered with Sovereign Gold's co-operation partner SUGEC, in EL 7491 (ASX: 29 April 2013). This newly discovered mineralisation is part of the large Rocky River-Uralla Intrusion-Related Gold System and has confirmed the repetition of Martins Shaft style mineralisation. Geochemical sampling (soil and rock chips) and mapping programs have now located additional parallel mineralised structures several hundred metres long.

Diamond drill hole ZK001 (Dip: 75°, Azimuth 121°; 345906mE, 6611563mN, WGS84, 56J) was drilled under diamond drill hole SGRDD036 that intersected 2.72g/t Au over 5m from 7-12 metres downhole including 7.8g/t Au over 1m and 12.35g/t Au over 0.5m (ASX: 30 January 2013).

ZK001 has so far intersected two mineralised horizons over a total downhole width of 15.5 metres at 76.24-84.75 metres and 89.9-96.9 metres downhole (see Figures). This hole demonstrates the width of mineralisation is increasing with depth from 4 metres true width in SGRDD036 to 11 metres true width over 76.24 to 96.9m downhole in ZK001. Mineralised core from hole ZK001 is being cut and sent for assay this week.

The discovery is in EL 7491 currently under joint venture with SUGEC who are spending \$2 million on EL 7491 to March 2014 (earning 30%), as part of a total exploration funding commitment of \$21 million on 10 tenements where Sovereign Gold has a majority interest.

SUGEC'S large tracked diamond rig is capable of drilling to depths of 800 metres. Sovereign Gold and SUGEC have designed a deep drilling program to test the gold grades laterally and vertically along the 1.55km long gold-bearing structure to establishing a JORC resource through 2013.

### For further information please contact:

Michael Leu, CEO  
Telephone: +61 2 9251 7177

### Media enquiries:

Rebecca Lawson, Mercury Consulting  
Mobile: +61 432 398 122  
[Rebecca.lawson@mercuryconsulting.com.au](mailto:Rebecca.lawson@mercuryconsulting.com.au)



**Figures**



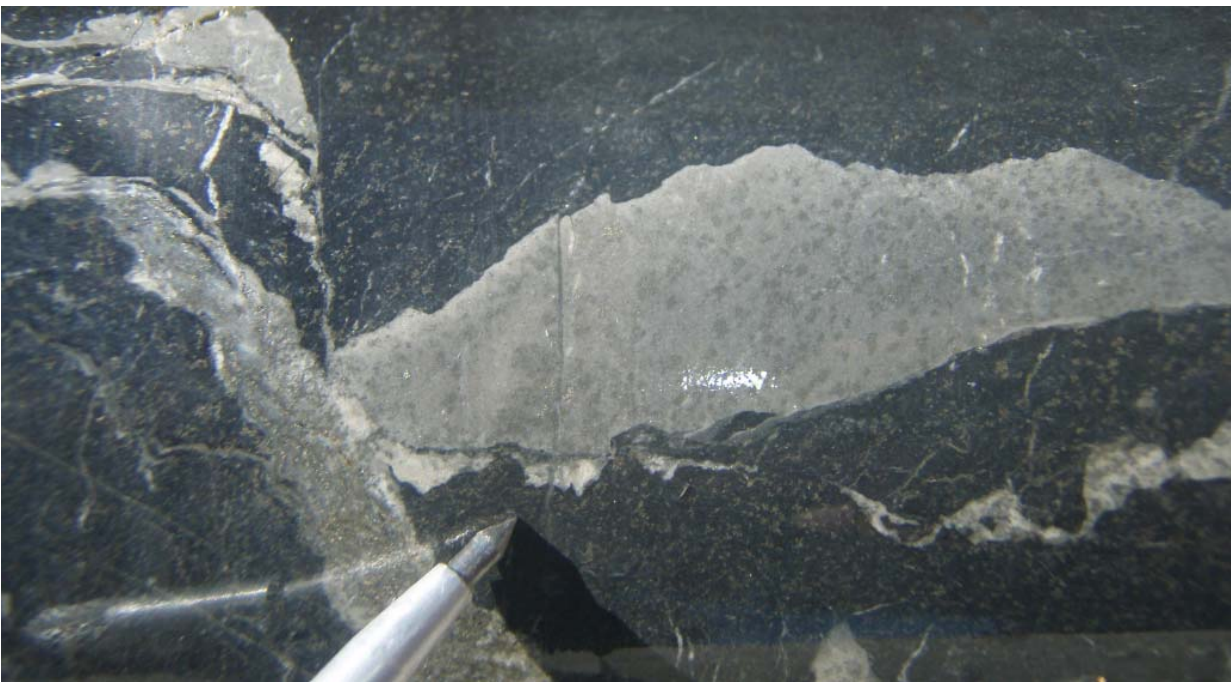
**SGRDD036** – Core of Sample D3609A, 12.35g/t Au. Intensely altered (silica-sulphide) and brecciated metasediments.



**ZK001** – Core from 80-81m downhole exhibiting similar alteration and brecciation to core sample D3609 above from diamond drill hole SGRDD036. The light grey material is altered felsic dyke that has intruded the black metasediments (NQ core 47.6mm diameter).



**ZK001** – Brecciated metasediments flooded with sulphide-bearing felsic dyke (78-79m, NQ core 47.6mm diameter).



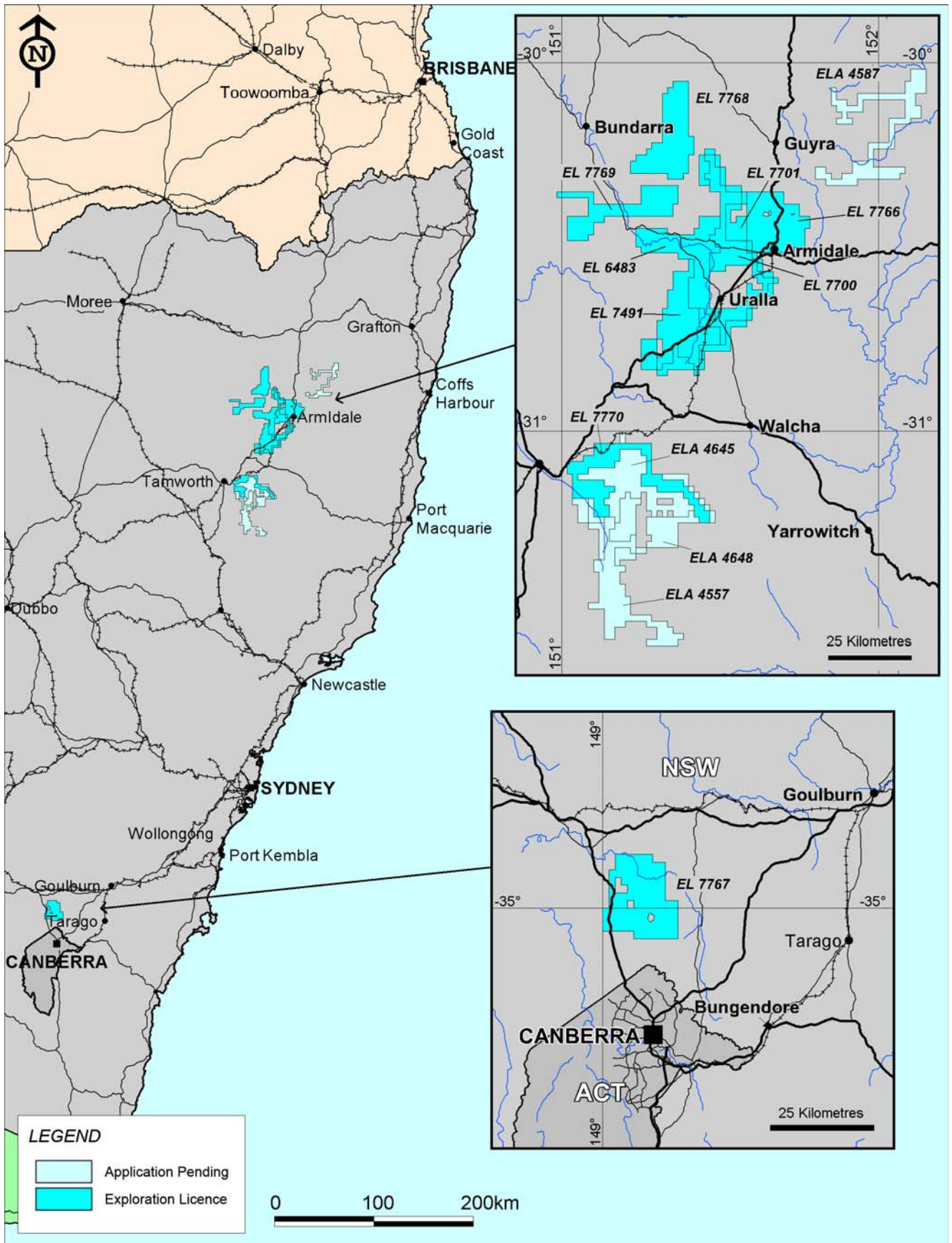
**ZK001** – Light-grey felsic dyke studded with darker grey sulphides interfingering black hornfelsed metasediments with disseminated sulphides (79-80m).



**ZK001** – Stringers of light grey felsic dyke and silvery sulphides in dark grey brecciated metasediments (79-80m).



**ZK001** – Sheeted veins and disseminated sulphides in metasediments (84-85m).



Sovereign Gold Tenement Portfolio