



SOVEREIGN GOLD
COMPANY LIMITED

ACN 145 184 667
Level 2, 131 Macquarie Street Sydney NSW 2000
T +612 9251 7177 F +612 9251 7500

ASX Release
30th September 2013

Extensive higher-grade gold zone encountered at Hobbs Pipe 1

- Higher grade zone of 178m @ 2.0 g/t Au from 400m encountered in GHD006
- 3D IP Survey completed – results expected by mid-October
- Metallurgical testing confirms 92% overall gold recoveries possible

Sovereign Gold Company Limited (**Sovereign Gold**) (ASX: SOC) is pleased to report continued positive results from the exploration program currently underway at Hobbs Pipe 1 of the Mt Adrah Hobbs Gold Project, particularly the intersection of a large higher-grade zone in hole GHD006.

Summary of Material Information

The information in this report relates to Hobbs Pipe 1 of the Mt Adrah Hobbs Gold Project. As per the 2012 JORC reporting guidelines, a summary is presented of the most recent phases of the exploration program (comprising three diamond core holes). A more detailed description is contained in Table 1 and Appendices A and B.

- **Broad, higher grade zone identified in Hole GHD006**
 - Higher grade zone of 178m @ 2.0 g/t Au from 400m
 - Included within a strongly mineralised intersection of 826m @ 1.3 g/t Au from surface, also including 408m @ 1.6 g/t Au from 400m
 - Hole ended at 855.9m

Dr Kris Butera, CEO of Gossan Hill Gold Limited said “*These results are very significant and show that parts of the deposit host significant gold grades well above the average grades of other bulk tonnage gold-bearing systems in the Lachlan Fold Belt*”.

“Further intersections of such broad higher grade zones may significantly impact the overall grade and gold content within the deposit, potentially increasing the gold content per vertical metre and consequently the overall project economics.”

- **Completion of 3D IP Survey data collection**
 - Data collection complete
 - Awaiting construction, and interpretation, of final 3D Inversion and Model
- **Metallurgy test results received from ALS Burnie**
 - 9.6% free gold
 - 96% of gold recovered in rougher flotation concentrate
 - 95.6% of gold in rougher flotation concentrate recovered through BIOX process
 - Gold grade is 20.7 ppm with 94.9% gold recovery in rougher flotation concentrate
 - 92% overall gold recovery

Recent reflected light microscopy on samples of the ore revealed that a significantly larger portion of the gold than previously recognised may be liberated by fine grinding, and that the refractory component of the ore may be much less than indicated by routine initial metallurgical test work based on a conventional grind of samples to <100 microns. If confirmed, this may mean that a simpler processing route and higher gold recoveries than 92% can be achieved.



- **Mineralisation observed in Hole GHD007 – completed to a depth of 924.1m, key observations include**
 - Near surface mineralisation intersected
 - Strong stockwork quartz veining, alteration and skarnification observed to bottom of hole
- **Hole GHD008 underway, targeting the western margin of Hobbs Pipe 1 at depth and possible extensions to the higher grade zone intersected in GHD006**
 - Currently at ~500m down hole, and in mineralised monzodiorite

The Mt Adrah Project is approximately 23km north west of the township and old gold mining centre of Adelong, in NSW. The Hobbs IRGS deposit is close to good infrastructure (power, transport and water) and is held within EL 6372, EL7844, EL 8127 and ELA 4868.

Hobbs Pipe 1 in EL 6372 has a JORC compliant 650,000-ounce resource, consisting of:

Category	Tonnes‡	Grade (g/t)‡	oz Au‡
Measured	2,594,000	1.21	101,000
Indicated	7,598,000	1.24	303,000
Inferred	6,175,000	1.24	246,000
	16,367,000	1.23	650,000

‡ At cut-off grade of 0.75 g/t. Differences may occur due to rounding.

Extensive gold mineralisation identified in assay results from Drill Hole GHD006

A significant zone of higher-grade gold mineralisation was intersected in drill hole GHD006, where **178m @ 2.0 g/t Au from 400m** was returned from within a broader zone of **826m @ 1.3 g/t Au from surface**, also including **408m @ 1.6 g/t Au from 400m**. GHD006 was completed at 855.9m.



Typical high-grade core from hole GHD006 – this zone averaging ~2.5 g/t Au

Further encouraging observations were made in drill hole GHD007

Drill hole GHD007 is oriented toward the NE, and was designed to target the NE edge of Hobbs Pipe 1 near the surface, and then continue on to test the geology beneath historical highly anomalous hornfels metasediment hosted mineralisation.



Example of intensely altered and stockwork-veined zone in hole GHD007 from around ~730m

Once leaving Hobbs 1 pipe, the hole entered into a very strongly altered and skarnified zone of hornfels characterised by semi-continuous zones of intense stockwork quartz veining.

Shallow historic holes drilled above this package yielded results of up to 150m @ 0.4 g/t Au from surface (hole MARC-3) and 66m @ 0.6 g/t Au from surface (hole MAAT-58).

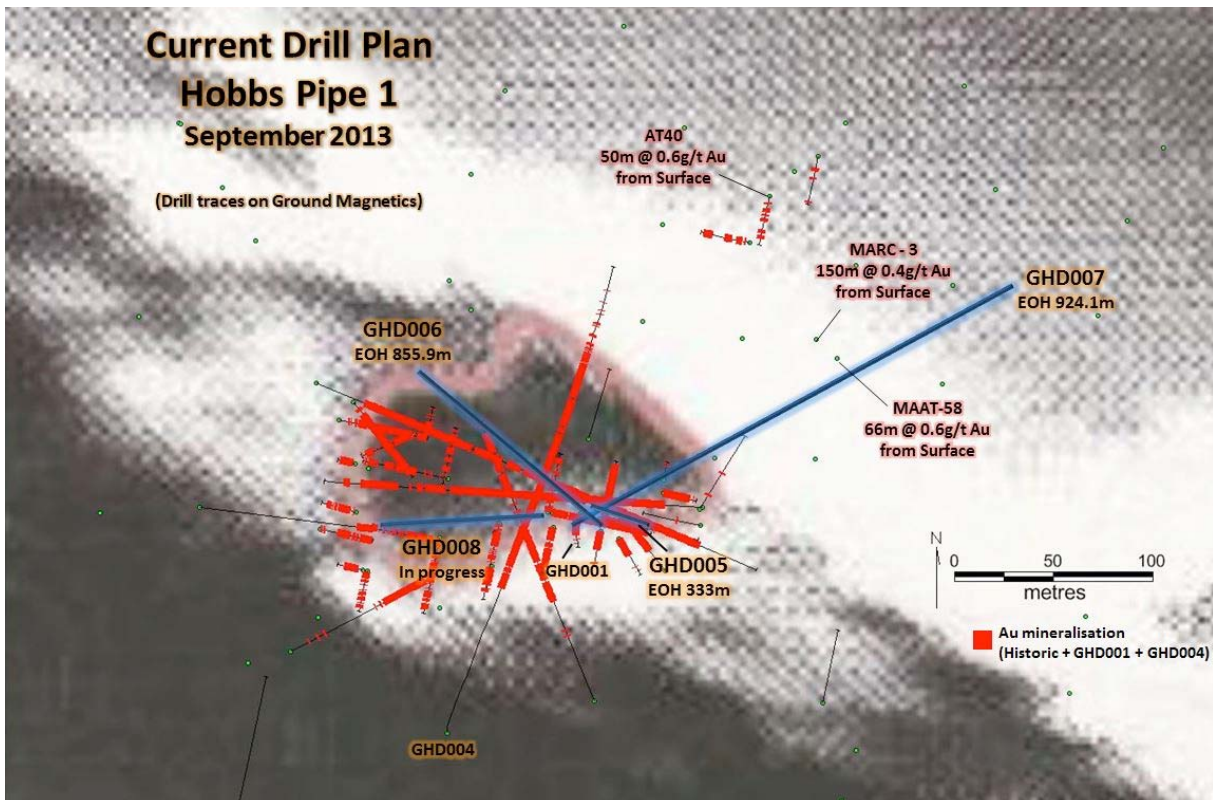
Core has been sampled and sent for assay to determine whether there is enough gold mineralisation to warrant further investigation of its economic potential.

Drill Hole GHD008 testing width of Hobbs Pipe 1 along strike and presenting consistent mineralisation

Hole GHD008 is currently at a depth of ~500m and has continuously been in altered and mineralised monzodiorite. The hole has been designed to test the western edge of the pipe at depth, and to follow up on the broad higher grade gold zone intersected previously in hole GHD006 drilled to the north of the current hole.



Near surface mineralised monzodiorite with narrow stockwork veining in hole GHD008, from around ~47m

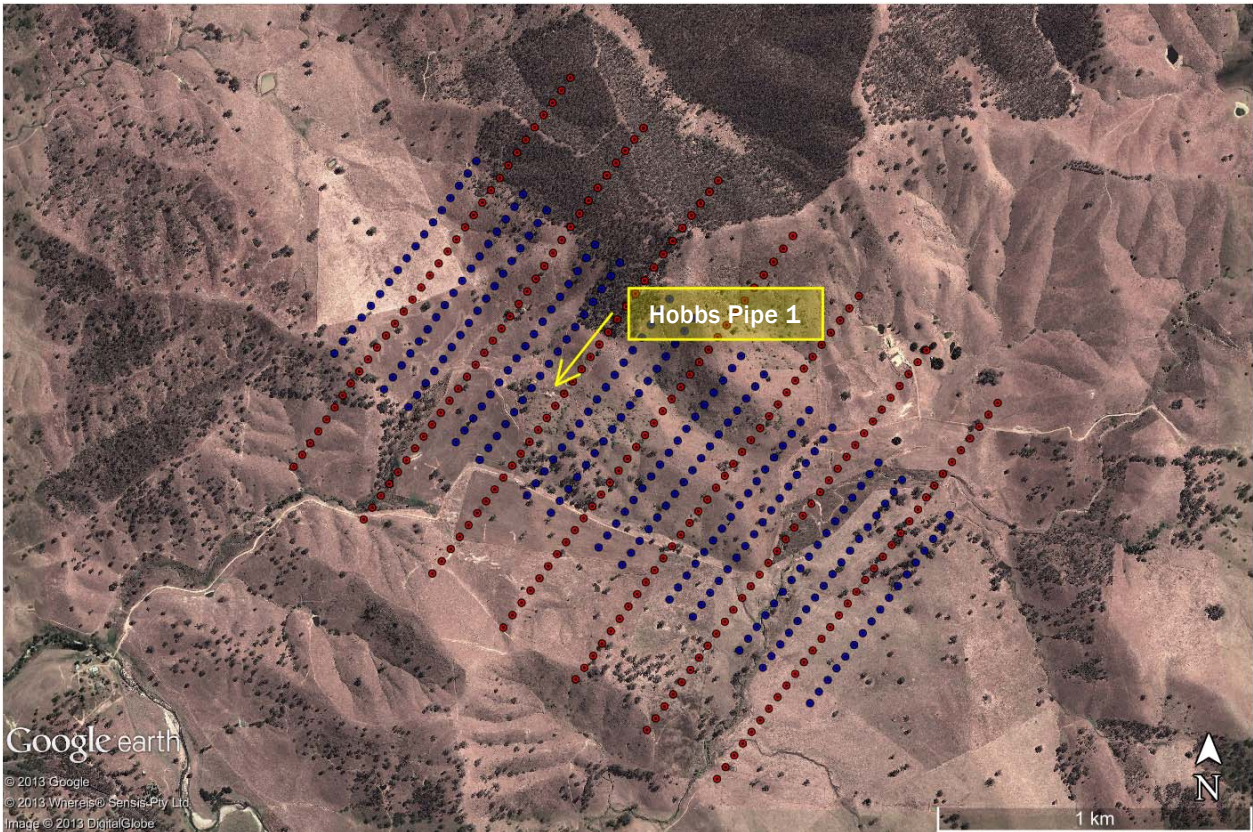


Current drill plan – Hobbs Pipe 1 deposit showing historic + GHD001 +GHD004 intercepts and recent hole traces



3D IP Survey completed with results expected by mid-October

A 3D IP Survey, comprising 7 arrays over an area of approximately 2 km x 1,000m has been completed. The objective of the 3D IP survey is to aid in the search of further Hobbs-style intrusion hosted, or quartz stockwork vein-hosted mineralisation within 1km of the Hobbs deposit.



EL 6372 – 3D IP Offset Pole Dipole array, showing location of Hobbs Pipe 1

The collection of data for the 3D IP survey is now complete, and a final inverted and assessed 3D model of the data is expected by mid-October.

For further information please contact:
Michael Leu, CEO
Telephone: +61 2 9251 7177
mleu@sovereigngold.com.au

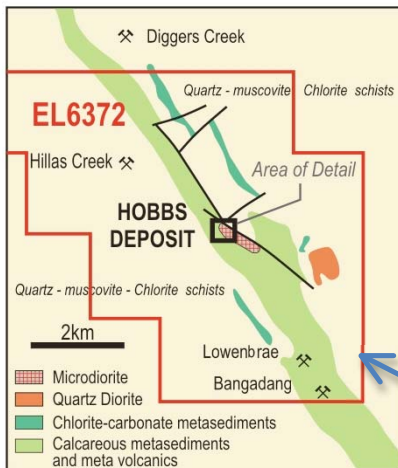
Media enquiries:
Rebecca Lawson, Mercury Consulting
Mobile: +61 432 398 122
Rebecca.lawson@mercuryconsulting.com.au



About Sovereign Gold Company Limited

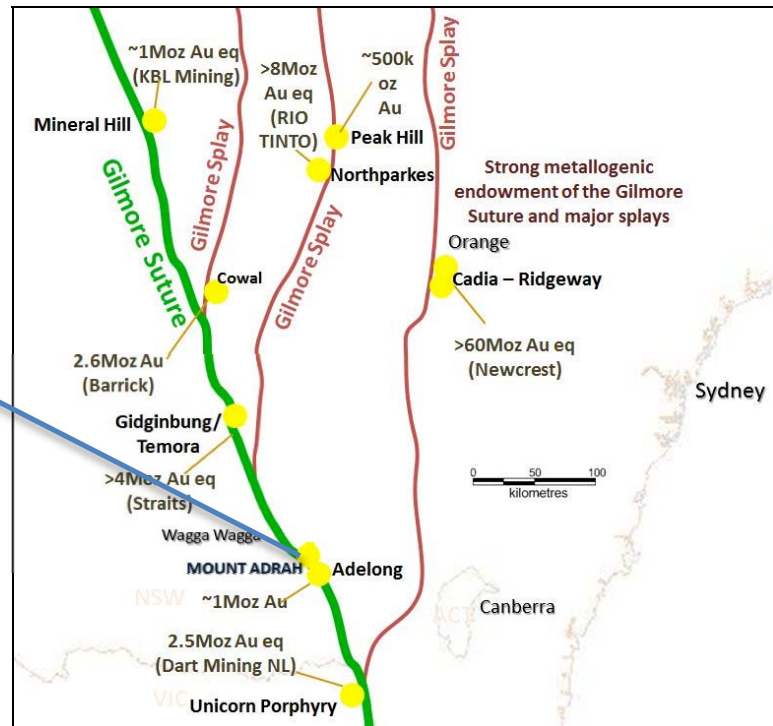
Sovereign Gold Company Limited (**Sovereign Gold**), (ASX: SOC) is an ASX listed company exploring primarily for gold in NSW.

Sovereign Gold acquired an 87% interest in Gossan Hill Gold Limited (**Gossan Hill**) in early 2013. Subsequently, additional exploration and deep drilling at Mt. Adrah (Hobbs Pipe 1) has uncovered a potentially world-class Intrusion-Related Gold System (IRGS) discovery. Evaluation is continuing. The Mt. Adrah Project is located approximately 50 km southeast of the regional NSW Centre of Wagga Wagga and 23km northwest of the historic gold mining district of Adelong.



Location map and geological setting, EL 6372

Location of Mount Adrah relative to several world-class gold deposits situated on the Gilmour Suture and associated splays



Sovereign Gold also holds 11 Exploration Licences over 3,240km² near Armidale in NSW including the historic Rocky River-Uralla Goldfields. Sovereign Gold's aggressive exploration program in several of these licence areas for 2013 is fully funded via a joint venture (at the tenement level) with Jianguo Geology & Engineering Co Ltd (**SUGEC**), a major Chinese State-owned geology enterprise.

SUGEC funded drilling, near Martins Shaft in the Uralla area, has recently confirmed the presence of another potentially large IRGS discovery.

Sovereign Gold holds 80% of Precious Metal Resources Limited (**PMR**) (ASX: PMR), an ASX listed exploration company. PMR holds 20 ELs and ELAs over prospective base and precious metal ground, many in close proximity to Sovereign.

About Gossan Hill Gold Limited and the Hobbs Gold Project

Gossan Hill is an unlisted exploration company with numerous IRGS gold prospects in New South Wales.

The recent acquisition of a controlling interest (87%) in Gossan Hill by Sovereign Gold provides multiple benefits for Sovereign Gold, including an expanded exploration footprint in New South Wales with an additional three quality project areas within 8 Exploration Licences.

Prior to the acquisition by Sovereign Gold, exploration indicated the potential for a significant gold resource presence at the Gossan Hill properties and in particular, the recently discovered Hobbs IRGS deposit which should enable Sovereign Gold to rapidly deliver resource growth and leverage off its experience exploring for IRGS in New South Wales.

The Hobbs IRGS deposit is close to good infrastructure (power, transport and water) and is held within EL 6372, EL7844, EL 8127 and ELA 4868.

The Mt Adrah Project is approximately 23km north west of the township and old gold mining centre of Adelong, in central western NSW.

Hobbs Pipe 1 in EL 6372 has a JORC compliant 650,000-ounce resource, consisting of 101,000 oz Measured; 303,000 oz Indicated; and 246,000 oz Inferred at a 0.75 g/t Au cutoff.



Table 1

The following table provides explanations required under JORC 2012

Section 1 Sampling Techniques and Data

Criteria	JORC Code explanation	Commentary
Sampling techniques	<ul style="list-style-type: none"> Nature and quality of sampling (eg cut channels, random chips, or specific specialised industry standard measurement tools appropriate to the minerals under investigation, such as down hole gamma sondes, or handheld XRF instruments, etc). These examples should not be taken as limiting the broad meaning of sampling. 	<ul style="list-style-type: none"> ½ Core HQ3
	<ul style="list-style-type: none"> Include reference to measures taken to ensure sample representivity and the appropriate calibration of any measurement tools or systems used. 	<ul style="list-style-type: none"> Consistent cut distance relative to mark up or orientation line
	<ul style="list-style-type: none"> Aspects of the determination of mineralisation that are Material to the Public Report. 	<ul style="list-style-type: none"> Fire Assay and Screen Fire Assay Gold. Au is predominantly held in sulphides within disseminated sericite-sulphide alteration. Gold is occasionally visible in quartz veins.
	<ul style="list-style-type: none"> In cases where 'industry standard' work has been done this would be relatively simple (eg 'reverse circulation drilling was used to obtain 1 m samples from which 3 kg was pulverised to produce a 30 g charge for fire assay'). In other cases more explanation may be required, such as where there is coarse gold that has inherent sampling problems. Unusual commodities or mineralisation types (eg submarine nodules) may warrant disclosure of detailed information. 	<ul style="list-style-type: none"> ½ Core HQ3 was sent to ALS laboratories on a 2m composite basis and was pulverised to produce a 30g charge for fire assay (Au_AA25), and 4 acid digestion for 48 element ICP-AES and ICP-MS analysis (ME-MS61) Screen Fire Assay on visible gold intercepts
Drilling techniques	<ul style="list-style-type: none"> Drill type (eg core, reverse circulation, open-hole hammer, rotary air blast, auger, Bangka, sonic, etc) and details (eg core diameter, triple or standard tube, depth of diamond tails, face-sampling bit or other type, whether core is oriented and if so, by what method, etc). 	<ul style="list-style-type: none"> Diamond, un-oriented HQ3 core (Vertical hole) Diamond, oriented HQ3 core Diamond, un-oriented PQ3 Core - collars



Criteria	JORC Code explanation	Commentary
Drill sample recovery	<ul style="list-style-type: none"> Method of recording and assessing core and chip sample recoveries and results assessed. 	<ul style="list-style-type: none"> Lithological, structural and geotechnical logging, photography, specific gravity
	<ul style="list-style-type: none"> Measures taken to maximise sample recovery and ensure representative nature of the samples. 	<ul style="list-style-type: none"> HQ triple tube (HQ3)
	<ul style="list-style-type: none"> Whether a relationship exists between sample recovery and grade and whether sample bias may have occurred due to preferential loss/gain of fine/coarse material. 	<ul style="list-style-type: none"> HQ triple tube utilized – no relationship has been observed between core recovery and grade with the data currently available
Logging	<ul style="list-style-type: none"> Whether core and chip samples have been geologically and geotechnically logged to a level of detail to support appropriate Mineral Resource estimation, mining studies and metallurgical studies. 	<ul style="list-style-type: none"> Yes core has been logged both geologically and geotechnically to a level of detail to support appropriate Mineral Resource estimation
	<ul style="list-style-type: none"> Whether logging is qualitative or quantitative in nature. Core (or costean, channel, etc) photography. 	<ul style="list-style-type: none"> Yes, logged and photographed
	<ul style="list-style-type: none"> The total length and percentage of the relevant intersections logged. 	<ul style="list-style-type: none"> 100%
Sub-sampling techniques and sample preparation	<ul style="list-style-type: none"> If core, whether cut or sawn and whether quarter, half or all core taken. 	<ul style="list-style-type: none"> ½ Core cut with a core saw ¼ Core for metallurgical assessment
	<ul style="list-style-type: none"> If non-core, whether riffled, tube sampled, rotary split, etc and whether sampled wet or dry. 	<ul style="list-style-type: none"> Not applicable at this stage of the program
	<ul style="list-style-type: none"> For all sample types, the nature, quality and appropriateness of the sample preparation technique. 	<ul style="list-style-type: none"> High quality and appropriateness of sample preparation technique
	<ul style="list-style-type: none"> Quality control procedures adopted for all sub-sampling stages to maximise representivity of samples. 	<ul style="list-style-type: none"> Consistent sampling at 2m composite level given known grade homogeneity and observed mineralisation, with the exception of the last composite in each hole that may not complete at an even metreage
	<ul style="list-style-type: none"> Measures taken to ensure that the sampling is representative of the in situ material collected, including for instance results for field duplicate/second-half sampling. 	<ul style="list-style-type: none"> Appropriate measures taken – half core remaining if further analysis warranted



Criteria	JORC Code explanation	Commentary
	<ul style="list-style-type: none"> Whether sample sizes are appropriate to the grain size of the material being sampled. 	<ul style="list-style-type: none"> Yes, sample sizes are appropriate to the grain size of the material being sampled
Quality of assay data and laboratory tests	<ul style="list-style-type: none"> The nature, quality and appropriateness of the assaying and laboratory procedures used and whether the technique is considered partial or total. 	<ul style="list-style-type: none"> ALS, appropriate techniques of fire assay for gold and ICP-AES and ICP-MS for multi-element analysis. Techniques considered total for the type of mineralization sampled. ALS, Screen Fire Assay for visible gold intercepts
	<ul style="list-style-type: none"> For geophysical tools, spectrometers, handheld XRF instruments, etc, the parameters used in determining the analysis including instrument make and model, reading times, calibrations factors applied and their derivation, etc. 	<ul style="list-style-type: none"> Not relevant at this stage of the program
	<ul style="list-style-type: none"> Nature of quality control procedures adopted (eg standards, blanks, duplicates, external laboratory checks) and whether acceptable levels of accuracy (ie lack of bias) and precision have been established. 	<ul style="list-style-type: none"> Internal standards and blanks not used at this early stage, however will be utilised in upcoming formal resource drill out of Hobbs Pipe 1
Verification of sampling and assaying	<ul style="list-style-type: none"> The verification of significant intersections by either independent or alternative company personnel. 	<ul style="list-style-type: none"> Not relevant at this stage of the program, all intersection reported are uncut at this stage due to homogeneity and likely bulk mining methods
	<ul style="list-style-type: none"> The use of twinned holes. 	<ul style="list-style-type: none"> The density of historic drilling does not require twin drilling to confirm grades
	<ul style="list-style-type: none"> Documentation of primary data, data entry procedures, data verification, data storage (physical and electronic) protocols. 	<ul style="list-style-type: none"> Not relevant at the current stage of the project
	<ul style="list-style-type: none"> Discuss any adjustment to assay data. 	<ul style="list-style-type: none"> There is no adjustment to assay data
Location of data points	<ul style="list-style-type: none"> Accuracy and quality of surveys used to locate drill holes (collar and down-hole surveys), trenches, mine workings and other locations used in Mineral Resource estimation. 	<ul style="list-style-type: none"> Current drilling sited using hand held GPS. Digital survey tool used for down hole surveying DGPS Collar location and RL data will be undertaken in due course
	<ul style="list-style-type: none"> Specification of the grid system used. 	<ul style="list-style-type: none"> MGA94 (Zone 55)



Criteria	JORC Code explanation	Commentary
	<ul style="list-style-type: none"> Quality and adequacy of topographic control. 	<ul style="list-style-type: none"> A digital topographic file is available in .dxf format A detailed DTM model was undertaken over the area in 1997
Data spacing and distribution	<ul style="list-style-type: none"> Data spacing for reporting of Exploration Results. 	<ul style="list-style-type: none"> Not relevant to current drilling.
	<ul style="list-style-type: none"> Whether the data spacing and distribution is sufficient to establish the degree of geological and grade continuity appropriate for the Mineral Resource and Ore Reserve estimation procedure(s) and classifications applied. 	<ul style="list-style-type: none"> Drill spacing of drilling suitable for mixed measured/inferred/indicated resource
	<ul style="list-style-type: none"> Whether sample compositing has been applied. 	<ul style="list-style-type: none"> 2m composite samples have been employed due to the relative homogeneity of the down hole data This will be reassessed if and when narrower high grade intervals or structures become evident
Orientation of data in relation to geological structure	<ul style="list-style-type: none"> Whether the orientation of sampling achieves unbiased sampling of possible structures and the extent to which this is known, considering the deposit type. 	<ul style="list-style-type: none"> Current drilling has employed core orientation device for all holes with the exception of GHD001 which was a vertical hole Significant orientated structural data on geological and structure features have been collected
	<ul style="list-style-type: none"> If the relationship between the drilling orientation and the orientation of key mineralised structures is considered to have introduced a sampling bias, this should be assessed and reported if material. 	<ul style="list-style-type: none"> Given the style and nature of the mineralization observed thus far, drill angle relative to structure or vein orientation is not considered relevant at this stage with respect to sample bias
Sample security	<ul style="list-style-type: none"> The measures taken to ensure sample security. 	<ul style="list-style-type: none"> Current core samples are securely stored at a private facility
Audits or reviews	<ul style="list-style-type: none"> The results of any audits or reviews of sampling techniques and data. 	<ul style="list-style-type: none"> Not undertaken at this stage



Section 2 Reporting of Exploration Results

Criteria	JORC Code explanation	Commentary
<i>Mineral tenement and land tenure status</i>	<ul style="list-style-type: none"><i>Type, reference name/number, location and ownership including agreements or material issues with third parties such as joint ventures, partnerships, overriding royalties, native title interests, historical sites, wilderness or national park and environmental settings.</i>	<ul style="list-style-type: none">EL6372 held 100% by Tasman Goldfields NSW Pty Ltd, a wholly owned subsidiary of Gossan Hill Gold Limited, itself a majority owned subsidiary of Sovereign Gold Company Ltd (ASX: SOC).
	<ul style="list-style-type: none"><i>The security of the tenure held at the time of reporting along with any known impediments to obtaining a licence to operate in the area.</i>	<ul style="list-style-type: none">Tenure is current and in good standing. There are no extraordinary impediments to obtaining a licence to operate in the area.
<i>Exploration done by other parties</i>	<ul style="list-style-type: none"><i>Acknowledgment and appraisal of exploration by other parties.</i>	<ul style="list-style-type: none">Historic work undertaken by Getty Oil, Cyprus Australis, Michela-go and Golden Cross Resources and their contractors led to a JORC compliant Mineral Resource estimate. Soils, airborne magnetics, RAB, Airtrack, RC, Diamond Drilling, Resource estimation. Work was undertaken to a high standard, but there was a lack of conceptualization and testing of geological models for deeper targets and targets with a better understanding of modern day economic geology deposit models.
<i>Geology</i>	<ul style="list-style-type: none"><i>Deposit type, geological setting and style of mineralisation.</i>	<ul style="list-style-type: none">Mesozonal to Epizonal Intrusion-Related Gold System located along the Gilmore Suture on the edge of a buried pluton



Criteria	JORC Code explanation	Commentary																																																
Drill hole Information	<ul style="list-style-type: none"> A summary of all information material to the understanding of the exploration results including a tabulation of the following information for all Material drill holes: <ul style="list-style-type: none"> easting and northing of the drill hole collar elevation or RL (Reduced Level – elevation above sea level in metres) of the drill hole collar dip and azimuth of the hole down hole length and interception depth hole length. 	<p style="text-align: center;">Mount Adrah Hobbs Pipe 1 – Completed Holes</p> <table border="1"> <thead> <tr> <th>Hole ID</th> <th>Easting (m)</th> <th>Northing (m)</th> <th>RL (m)</th> <th>Grid</th> <th>Collar Azimuth</th> <th>Collar Dip</th> <th>Total Depth (m)</th> </tr> </thead> <tbody> <tr> <td>GHD001</td> <td>583496</td> <td>6104591</td> <td>401</td> <td>MGA94 Zone 55</td> <td>-</td> <td>-90°</td> <td>1029.6</td> </tr> <tr> <td>GHD004</td> <td>583428</td> <td>6104480</td> <td>362</td> <td>MGA94 Zone 55</td> <td>22</td> <td>-77</td> <td>1030.1</td> </tr> <tr> <td>GHD005</td> <td>583497</td> <td>6104597</td> <td>400</td> <td>MGA94 Zone 55</td> <td>105</td> <td>-75</td> <td>333</td> </tr> <tr> <td>GHD006</td> <td>583502</td> <td>6140591</td> <td>400</td> <td>MGA94 Zone 55</td> <td>299</td> <td>-83</td> <td>855.9</td> </tr> <tr> <td>GHD007</td> <td>583479</td> <td>6104591</td> <td>400</td> <td>MGA94 Zone 55</td> <td>50</td> <td>-75</td> <td>924.1</td> </tr> </tbody> </table>	Hole ID	Easting (m)	Northing (m)	RL (m)	Grid	Collar Azimuth	Collar Dip	Total Depth (m)	GHD001	583496	6104591	401	MGA94 Zone 55	-	-90°	1029.6	GHD004	583428	6104480	362	MGA94 Zone 55	22	-77	1030.1	GHD005	583497	6104597	400	MGA94 Zone 55	105	-75	333	GHD006	583502	6140591	400	MGA94 Zone 55	299	-83	855.9	GHD007	583479	6104591	400	MGA94 Zone 55	50	-75	924.1
		Hole ID	Easting (m)	Northing (m)	RL (m)	Grid	Collar Azimuth	Collar Dip	Total Depth (m)																																									
GHD001	583496	6104591	401	MGA94 Zone 55	-	-90°	1029.6																																											
GHD004	583428	6104480	362	MGA94 Zone 55	22	-77	1030.1																																											
GHD005	583497	6104597	400	MGA94 Zone 55	105	-75	333																																											
GHD006	583502	6140591	400	MGA94 Zone 55	299	-83	855.9																																											
GHD007	583479	6104591	400	MGA94 Zone 55	50	-75	924.1																																											
<ul style="list-style-type: none"> If the exclusion of this information is justified on the basis that the information is not Material and this exclusion does not detract from the understanding of the report, the Competent Person should clearly explain why this is the case. 	<ul style="list-style-type: none"> Information provided for holes GHD001 to GHD007 (see completed holes above); previous historic holes have been substantially reported in previous releases and repeating this data does not add to the understanding of this report 																																																	
Data aggregation methods	<ul style="list-style-type: none"> In reporting Exploration Results, weighting averaging techniques, maximum and/or minimum grade truncations (eg cutting of high grades) and cut-off grades are usually Material and should be stated. 	<ul style="list-style-type: none"> Uncut due to the narrow range of grades assayed and lack of outlier values. 																																																
	<ul style="list-style-type: none"> Where aggregate intercepts incorporate short lengths of high grade results and longer lengths of low grade results, the procedure used for such aggregation should be stated and some typical examples of such aggregations should be shown in detail. 	<ul style="list-style-type: none"> Not relevant at this time, will reassess if and when narrow higher grade intersections are delineated 																																																
	<ul style="list-style-type: none"> The assumptions used for any reporting of metal equivalent values should be clearly stated. 	<ul style="list-style-type: none"> None used 																																																
Relationship between	<ul style="list-style-type: none"> These relationships are particularly important in the reporting of Exploration Results. 	<ul style="list-style-type: none"> Approximate true width ~110 metres, approximate minimum depth 900 metres 																																																



Criteria	JORC Code explanation	Commentary
<i>mineralisation widths and intercept lengths</i>	<ul style="list-style-type: none"> <i>If the geometry of the mineralisation with respect to the drill hole angle is known, its nature should be reported.</i> 	<ul style="list-style-type: none"> The geometry is not currently known but is being tested by planned drilling
	<ul style="list-style-type: none"> <i>If it is not known and only the down hole lengths are reported, there should be a clear statement to this effect (eg 'down hole length, true width not known').</i> 	<ul style="list-style-type: none"> down hole lengths reported, approximate true width ~110 metres
<i>Diagrams</i>	<ul style="list-style-type: none"> <i>Appropriate maps and sections (with scales) and tabulations of intercepts should be included for any significant discovery being reported These should include, but not be limited to a plan view of drill hole collar locations and appropriate sectional views.</i> 	<ul style="list-style-type: none"> Updated drill plan included in report; plans and sections have been substantially reported in previous reports.
<i>Balanced reporting</i>	<ul style="list-style-type: none"> <i>Where comprehensive reporting of all Exploration Results is not practicable, representative reporting of both low and high grades and/or widths should be practiced to avoid misleading reporting of Exploration Results.</i> 	<ul style="list-style-type: none"> Aggregate reporting is appropriate as mineralisation is disseminated evenly through the magmatic / intrusive rock
<i>Other substantive exploration data</i>	<ul style="list-style-type: none"> <i>Other exploration data, if meaningful and material, should be reported including (but not limited to): geological observations; geophysical survey results; geochemical survey results; bulk samples – size and method of treatment; metallurgical test results; bulk density, groundwater, geotechnical and rock characteristics; potential deleterious or contaminating substances.</i> 	<ul style="list-style-type: none"> Completion of 3D IP Survey. Data collection is complete, but 3D Inversion, modelling and interrogation of the data/model is pending
<i>Further work</i>	<ul style="list-style-type: none"> <i>The nature and scale of planned further work (eg tests for lateral extensions or depth extensions or large-scale step-out drilling).</i> 	<ul style="list-style-type: none"> Test for lateral and depth extensions, resource delineation and for further mineralised monzodioritic pipes via geochemical orientation, geophysical survey and further drilling Formal resource drill out



Criteria	JORC Code explanation	Commentary
	<ul style="list-style-type: none"> Diagrams clearly highlighting the areas of possible extensions, including the main geological interpretations and future drilling areas, provided this information is not commercially sensitive. 	<ul style="list-style-type: none"> Full disclosure of the planned work program would alert suppliers of services of the scope of the proposed work and would put the company at a financial disadvantage in negotiations.

Section 3 Estimation and Reporting of Mineral Resources

Criteria	JORC Code explanation	Commentary
Database integrity	<ul style="list-style-type: none"> Measures taken to ensure that data has not been corrupted by, for example, transcription or keying errors, between its initial collection and its use for Mineral Resource estimation purposes. 	<ul style="list-style-type: none"> Limited checks of laboratory assay certificates against the database identified no errors
	<ul style="list-style-type: none"> Data validation procedures used. 	<p>Data validation included checks for:</p> <ul style="list-style-type: none"> Overlapping intervals Missing collars Missing surveys Unreasonable downhole deviations Unreasonable high-density values Duplicate records and negative records
Site visits	<ul style="list-style-type: none"> Comment on any site visits undertaken by the Competent Person and the outcome of those visits. 	<ul style="list-style-type: none"> S Tripathi has undertaken a site visit, has viewed drill core and discussed the geology
	<ul style="list-style-type: none"> If no site visits have been undertaken indicate why this is the case. 	<ul style="list-style-type: none"> On going process
Geological interpretation	<ul style="list-style-type: none"> Confidence in (or conversely, the uncertainty of) the geological interpretation of the mineral deposit. 	<ul style="list-style-type: none"> The geology of the Mt Adrah Hobbs Deposit is well understood from drill hole data and mapping, continuity of grade along down hole and detailed geological logging of drill core
	<ul style="list-style-type: none"> Nature of the data used and of any assumptions made. 	<ul style="list-style-type: none"> Data exhibit good symmetric distribution and took into consideration geological trends observed from drill data



Criteria	JORC Code explanation	Commentary
	<ul style="list-style-type: none"><i>The effect, if any, of alternative interpretations on Mineral Resource estimation.</i>	<ul style="list-style-type: none">The cut off grades of .50g/t and .75g/t are considered appropriate to estimate Mineral Resources.
	<ul style="list-style-type: none"><i>The use of geology in guiding and controlling Mineral Resource estimation.</i>	<ul style="list-style-type: none">Mineralisation is controlled by lithological and alteration boundaries, and appears to be continuous from surface to down drill holeFurther data collection and analysis may also define discrete structural controls
	<ul style="list-style-type: none"><i>The factors affecting continuity both of grade and geology.</i>	<ul style="list-style-type: none">Au is predominantly held in sulphides within disseminated sericite-sulphide alteration. Gold is occasionally visible in quartz veins and spatial continuity has been established both in grade and geology from drill hole data
<i>Dimensions</i>	<ul style="list-style-type: none"><i>The extent and variability of the Mineral Resource expressed as length (along strike or otherwise), plan width, and depth below surface to the upper and lower limits of the Mineral Resource.</i>	<ul style="list-style-type: none">The extent and variability of the Mineral Resource is still open but length (along strike) 200m, width 110m and depth >1000m has been observed



Criteria	JORC Code explanation	Commentary
Estimation and modelling techniques	<ul style="list-style-type: none"> The nature and appropriateness of the estimation technique(s) applied and key assumptions, including treatment of extreme grade values, domaining, interpolation parameters and maximum distance of extrapolation from data points. If a computer assisted estimation method was chosen include a description of computer software and parameters used. 	<p>Estimation undertaken in WinGSLIB</p> <ul style="list-style-type: none"> Kriging method using of 5m x 5m x 5m blocks was undertaken including extreme grade values. The maximum distance of extrapolation from data point is 30m for inferred resources, 20m for indicated resources and 10m for measured resources are considered after demonstrating the continuity of grade and geology. Spherical model was fitted to experimental directional variogram Variogram parameters: <ul style="list-style-type: none"> C0: 0.20 C1 (Spherical): 0.35 C2 (Spherical): 0.05 Major direction 50m Intermediate direction 30m Minor range 25m Estimation parameters: <ul style="list-style-type: none"> Min samples –5 Max and optimum sample 10
	<ul style="list-style-type: none"> The availability of check estimates, previous estimates and/or mine production records and whether the Mineral Resource estimate takes appropriate account of such data. 	<ul style="list-style-type: none"> Previous estimates were not available and no legacy production records are available
	<ul style="list-style-type: none"> The assumptions made regarding recovery of by-products. 	<ul style="list-style-type: none"> No other variables were considered in the estimate, as this is an early stage project
	<ul style="list-style-type: none"> Estimation of deleterious elements or other non-grade variables of economic significance (eg sulphur for acid mine drainage characterisation). 	<ul style="list-style-type: none"> No other variables were considered in the estimate, as this is an early stage project
	<ul style="list-style-type: none"> In the case of block model interpolation, the block size in relation to the average sample spacing and the search employed. 	<ul style="list-style-type: none"> Block size was 5m by 5m horizontal, vertical block size was 5m Average sample spacing from 10m to 30m and search employed from 10m to 30m The inferred mineral resource is calculated using geostatistical



Criteria	JORC Code explanation	Commentary
		<p>methods for a deposit with apparently homogeneous grade distribution. Spacing is within the range of 30m sample spacing. It uses all drill holes and extrapolation up to maximum 30m spacing from block estimation is performed on the basis of data density, low nugget effect, minimum number of sample, data spacing as verified by variogram.</p> <ul style="list-style-type: none">• Blocks were classified as Inferred where:• The average distance, away from the center of the block, of samples used to compute the block gold grade was less than or equal to 30m x and y directions and 30m down drill holes as variogram demonstrated good grade continuity in these directions; and• the number of data points (from samples composited to 2m downhole) used to compute the block gold grade with minimum number of samples of 5, minimum number of optimum samples being 10 or more.• Diagrams have not as yet been produced, but will in due course be prepared and included in the final report.• The block model was created using the geostatistical method after demonstrating the continuity from variogram and variance for each block is produced.• All drill holes data are considered for the resource classifications and based on the low nugget effect deposit, data density, data spacing and grade and geological continuity as stated earlier without constructing any wireframe model at this stage.• Wireframe model have not been prepared at this stage, but will be constructed at a later stage when additional drilling information is obtained.• The need for wire frame modelling at this stage of reporting is not considered necessary due the homogenous nature of the mineralisation.



Criteria	JORC Code explanation	Commentary
	<ul style="list-style-type: none"> Any assumptions behind modelling of selective mining units. 	<ul style="list-style-type: none"> Modeling of selective mining units has not been undertaken at this stage
	<ul style="list-style-type: none"> Any assumptions about correlation between variables. 	<ul style="list-style-type: none"> No other variables were considered in the estimate, as this is an early stage project
	<ul style="list-style-type: none"> Description of how the geological interpretation was used to control the resource estimates. 	<ul style="list-style-type: none"> Only drill data which are spatially correlated from estimated variogram are considered along with sample space, density and continuity of grade and geology
	<ul style="list-style-type: none"> Discussion of basis for using or not using grade cutting or capping. 	<ul style="list-style-type: none"> High grades are spatially limited and important. Grades >20 g/t were restricted to a radius of 5m for each block estimates. Grades >20 g/t that fell outside of the 5m radius were capped at 20 g/t. This effectively restricted very high grades to within single blocks
	<ul style="list-style-type: none"> The process of validation, the checking process used, the comparison of model data to drill hole data, and use of reconciliation data if available. 	<ul style="list-style-type: none"> No reconciliation data is available for the Mt Adrah project as no official production has taken place
Moisture	<ul style="list-style-type: none"> Whether the tonnages are estimated on a dry basis or with natural moisture, and the method of determination of the moisture content. 	<ul style="list-style-type: none"> Tonnages are based on dry tonnes
Cut-off parameters	<ul style="list-style-type: none"> The basis of the adopted cut-off grade(s) or quality parameters applied. 	<ul style="list-style-type: none"> The mineral resources were reported at a range of cut-off grades as the project is in an early stage and comprehensive metallurgical test work has not been undertaken from which a reasonable economic cut-off grade can be derived



Criteria	JORC Code explanation	Commentary
<p><i>Mining factors or assumptions</i></p>	<ul style="list-style-type: none"> Assumptions made regarding possible mining methods, minimum mining dimensions and internal (or, if applicable, external) mining dilution. It is always necessary as part of the process of determining reasonable prospects for eventual economic extraction to consider potential mining methods, but the assumptions made regarding mining methods and parameters when estimating Mineral Resources may not always be rigorous. Where this is the case, this should be reported with an explanation of the basis of the mining assumptions made. 	<ul style="list-style-type: none"> S Tripathi’s opinion is that this is a reasonable assumption but should not be regarded as rigorous at this early stage. The current Mineral Resources includes the dilution defined by the 5m by 5m by 5m volume (support effect). It does not include the additional dilution due to the information effect and due to practical mining constraints A reasonable assumption is one made based on experience and knowledge of the environment in which the assumption is made. It is one that the competent person making it is of the view that another competent person with the same background and knowledge would make in the same circumstances. The initial resource of 239,000 ounces gold was based on a 0.50 g/t cutoff. The declared resource of 650,000 ounces is more conservative at 0.75 g/t cutoff. The proposed mining method under consideration is currently open cut to a vertical depth of up to 200 metres with block or sublevel caving methods extending to approximately a further 500 meters. As advised to the ASX on 7 August 2013: “Highly regarded JKTech Pty Ltd have been engaged ‘to provide a high level study to evaluate the Mount Adrah ore body caveability and assess the potential for block or sublevel caving methods based on geological and geotechnical criteria’”. The selected cutoff grade is higher than that of other economic operating mines.
<p><i>Metallurgical factors or assumptions</i></p>	<ul style="list-style-type: none"> The basis for assumptions or predictions regarding metallurgical amenability. It is always necessary as part of the process of determining reasonable prospects for eventual economic extraction to consider potential metallurgical methods, but the assumptions regarding metallurgical treatment processes and parameters made when reporting Mineral Resources may not always be rigorous. Where this is the case, this should be reported with an explanation of the basis of the metallurgical assumptions made. 	<ul style="list-style-type: none"> The Company has considered the reasonable prospects for eventual economic recovery. There are many viable mines that treat arsenopyrite concentrates to recover gold. Others simply sell the concentrate to an offtake buyer for the life of mine production. Sovereign reported to the ASX on 7 August that the Company’s “Preference is for Sale of Concentrate”. ALS Metallurgy, in September 2013 reported on metallurgical tests they had recently completed: Rougher flotation tests (T01-12) on Mt Adrah ore at p80=100um were performed to generate rougher concentrates for further diagnostic leach and BIOX® leach tests.



Criteria	JORC Code explanation	Commentary
		<p>The results indicate some 96% gold was recovered.</p> <ul style="list-style-type: none"> • Gold grade is 20.7 ppm with 94.9% recovery in rougher flotation concentrate. • BIOX[®] leach test on rougher concentrate oxidized some 98% sulphide. The sulphide grade in BIOX[®] leach residue is 0.55%. Diagnostic leach tests were performed on three different samples: rougher concentrates at p80=79um, rougher concentrates at p80=19um, BIOX[®] leach residue at p80=36um. The results indicate that only some 10% gold is cyanide soluble in rougher flotation concentrates. While cyanide soluble gold is 95.6% in the BIOX[®] leach residue due to BIOX[®] process oxidized sulphide minerals and released gold.
<p><i>Environmental factors or assumptions</i></p>	<ul style="list-style-type: none"> • <i>Assumptions made regarding possible waste and process residue disposal options. It is always necessary as part of the process of determining reasonable prospects for eventual economic extraction to consider the potential environmental impacts of the mining and processing operation. While at this stage the determination of potential environmental impacts, particularly for a greenfields project, may not always be well advanced, the status of early consideration of these potential environmental impacts should be reported. Where these aspects have not been considered this should be reported with an explanation of the environmental assumptions.</i> 	<ul style="list-style-type: none"> • Waste and process residue disposal options have been considered at conceptual level. It is assumed that due to known mining activity in the proximity to the Mt Adrah project that environmental impacts will be addressed with due process but should not preclude the project from progressing to potential economic extraction
<p><i>Bulk density</i></p>	<ul style="list-style-type: none"> • <i>Whether assumed or determined. If assumed, the basis for the assumptions. If determined, the method used, whether wet or dry, the frequency of the measurements, the nature, size and representativeness of the samples.</i> • <i>The bulk density for bulk material must have been measured by methods that adequately account for void spaces (vugs, porosity, etc), moisture and differences between rock and alteration zones within the deposit.</i> 	<ul style="list-style-type: none"> • Density measurements were undertaken on a number of core samples from each hole using the dry weight / wet weight method • Specific Gravity data obtained on core from a number of holes drilled into Hobbs 1 Pipe, calculated by the Dry vs Wet weight method.



Criteria	JORC Code explanation	Commentary
	<ul style="list-style-type: none"> Discuss assumptions for bulk density estimates used in the evaluation process of the different materials. 	<ul style="list-style-type: none"> Densities were estimated in the block model using ordinary Kriging and were not constrained to individual lithological units due to the fairly uniform nature of densities over the entire deposit
Classification	<ul style="list-style-type: none"> The basis for the classification of the Mineral Resources into varying confidence categories. 	<ul style="list-style-type: none"> High confidence in the quality of data justified in Measure/Indicated classification
	<ul style="list-style-type: none"> Whether appropriate account has been taken of all relevant factors (ie relative confidence in tonnage/grade estimations, reliability of input data, confidence in continuity of geology and metal values, quality, quantity and distribution of the data). 	<ul style="list-style-type: none"> Geological and grade continuity has been demonstrated at 5 m grid spacing over the Mt Adrah Hobbs deposit. The continuity of grade and geology has been demonstrated for the Mt Adrah Project
	<ul style="list-style-type: none"> Whether the result appropriately reflects the Competent Person's view of the deposit. 	<ul style="list-style-type: none"> Appropriate geostatistical methodology was applied based on the Mt Adrah Hobbs Deposit by Competent Person (S Tripathi)
Audits or reviews	<ul style="list-style-type: none"> The results of any audits or reviews of Mineral Resource estimates. 	<ul style="list-style-type: none"> No external audits or reviews have been carried out to date, however the company is in the process of organising external reviews
Discussion of relative accuracy/confidence	<ul style="list-style-type: none"> Where appropriate a statement of the relative accuracy and confidence level in the Mineral Resource estimate using an approach or procedure deemed appropriate by the Competent Person. For example, the application of statistical or geostatistical procedures to quantify the relative accuracy of the resource within stated confidence limits, or, if such an approach is not deemed appropriate, a qualitative discussion of the factors that could affect the relative accuracy and confidence of the estimate. 	<ul style="list-style-type: none"> The ordinary Kriging is used as data exhibit good grade continuous to the down holes direction and horizontally. Kriging method was employed to address confidence on the estimates. Further geostatistical methods will be validated on additional ongoing drilling once sampling is completed in due time
	<ul style="list-style-type: none"> The statement should specify whether it relates to global or local estimates, and, if local, state the relevant tonnages, which should be relevant to technical and economic evaluation. Documentation should include assumptions made and the procedures used. 	<ul style="list-style-type: none"> The slope of regression applied to guide the classification of the Mineral Resource appropriately takes the quality and hence accuracy of the block estimates into consideration



Criteria	JORC Code explanation	Commentary
	<ul style="list-style-type: none"><i>These statements of relative accuracy and confidence of the estimate should be compared with production data, where available.</i>	<ul style="list-style-type: none">Production data is not available for Mt Adrah project, which precludes comparison of the Mineral Resource with production data

Qualifying Statements

The information in this report that relates to Exploration Information is based on information compiled by Michael Leu a Member of The Australasian Institute of Mining and Metallurgy and the Australian Institute of Geoscientists together with Dr Andrew White, a Fellow of the Australian Institute of Geoscientists and Jacob Rebek and Dr Kris Butera, Members of the Australian Institute of Geoscientists.

Mr Leu and Jacob Rebek are qualified geologists and are directors of Sovereign Gold Company Limited; Dr White is a director of Gossan Hill Gold Limited; and Dr Kris Butera is CEO and director Gossan Hill Gold Limited.

Geostatistical block modeling was carried out by independent consultants, Geosun Pty Ltd by Mr Suresh Tripathi using GSLIB mining software incorporating 5×5×5m blocks. Mr Tripathi is an experienced resource-modelling consultant and is a director of Geosun Pty Ltd. He is a member of Australasian Institute of Mining and Metallurgy.

Mr Leu, Jacob Rebek, Dr White, Dr Butera and Mr Tripathi have sufficient experience, which is relevant to the style of mineralization and type of deposit under consideration and to the activity, which they are undertaking to qualify as Competent Persons as defined in the 2012 Edition of the Australasian Code for Reporting of Exploration Results, Mineral Resources and Ore Resources. Mr Leu, Jacob Rebek, Dr White, Dr Butera and Mr Tripathi consent to the inclusion in this report of the Exploration Information in the form and context in which it appears.



Appendix A

Metallurgical Assessment of Mt Adrah Ore for Gossan Hill Gold Ltd – Report T0837

S. Zhao, ALS Metallurgy, September 2013

Key Outcomes

- 9.6% free gold
- 96% of gold recovered in rougher flotation concentrate
- 95.6% of gold in rougher flotation concentrate recovered through BIOX[®] process
- 92% overall gold recovery

Extracts from Report T0837

Some 8 bags of Mt Adrah cut core were received for preparation, flotation and leach assessment.

Head analyses of the composite are indicated in the following table.

Fe	%	3.14
As	%	0.69
Au	ppm	1.79
S	%	2.47
Sulphide S	%	2.32
C	%	0.43
C organic	%	<0.02
C inorganic	%	0.43

Rougher flotation tests (T01-12) on Mt Adrah ore at p80=100um were performed to generate rougher concentrates for further diagnostic leach and BIOX[®] leach tests. The results indicate some 96% gold was recovered.

BIOX[®] leach test on rougher concentrate oxidized some 98% sulphide. The sulphide grade in BIOX[®] leach residue is 0.55%.

Diagnostic leach tests were performed on three different samples: rougher concentrates at p80=79um, rougher concentrates at p80=19um, BIOX[®] leach residue at p80=36um. The results indicate that only some 10% gold is cyanide soluble in rougher flotation concentrates. While cyanide soluble gold is 95.6% in the BIOX[®] leach residue due to BIOX[®] process oxidized sulphide minerals and released gold.



Appendix B

Drilling Data

Hobbs Pipe 1 Completed Drill Hole Collars

Hole ID	Easting (m)	Northing (m)	RL (m)	Grid	Collar Method	Collar Azimuth (MGA)	Collar Dip	Core PQ3 (m)	Core HQ3 (m)	Total Depth (m)	BOX (m)
GHD001	583496	6104591	401	MGA94	GPS	0	-90	70	959.6	1029.6	24.5
GHD004	583428	6104480	362	MGA94	GPS	22	-77	54	976.1	1030.1	25.8
GHD005	583497	6104597	400	MGA94	GPS	105	-75	42.9	290.1	333	27.62
GHD006	583502	6104591	400	MGA94	GPS	299	-83	44.9	811	855.9	26.3

Hobbs Pipe 1 Completed Drill Hole Surveys

Hole ID	Depth	AZI (MGA94)	Dip	Hole ID	Depth	AZI (MGA94)	Dip
GHD001	102.6	175.3	-89.5	GHD006	15	311	-82.6
GHD001	150	203.5	-89.3	GHD006	51	306.1	-82.5
GHD001	204	217.5	-89.5	GHD006	81	308.5	-82.5
GHD001	252.6	209.7	-89.1	GHD006	110	310.6	-82.5
GHD001	300.6	205.5	-89.4	GHD006	138	310.1	-82.3
GHD001	354	208	-89.3	GHD006	168	310.5	-82.4
GHD001	402.6	198	-89.2	GHD006	198	311.1	-82.3
GHD001	450	206.4	-89	GHD006	230	309.4	-82.2
GHD001	501.6	199	-88.8	GHD006	264	310.5	-82.2
GHD001	549	202.5	-89.9	GHD006	297	308.8	-82.1
GHD001	600	197.7	-88.7	GHD006	330	306.8	-82.1
GHD001	606.6	186.1	-88.9	GHD006	360	309.1	-82.3
GHD001	650.6	180.6	-88.8	GHD006	390	309.7	-82.2
GHD001	708.6	180	-88.6	GHD006	420	309.4	-82.4
GHD001	750.6	181.4	-88.5	GHD006	453	308.4	-82.3
GHD001	801.6	170	-88.5	GHD006	483	306.9	-82.4
GHD001	852.6	170.4	-88.5	GHD006	510	305.3	-82.4
GHD001	900.6	169	-88.5	GHD006	543	303.9	-82.4
GHD001	999.6	171.3	-88.2	GHD006	573	306.3	-82.3
GHD001	1029.6	174.3	-88.2	GHD006	600	303.6	-82.2
GHD004	30	21.7	-77.1	GHD006	630	302.9	-82.2
GHD004	42.6	20.1	-76.8	GHD006	663	303.8	-82.2
GHD004	91.1	21.4	-76.6	GHD006	729	300.6	-82.3
GHD004	121.1	22.8	-76.6	GHD006	759	302.1	-82.4
GHD004	151.1	20.2	-76.4	GHD006	789	300.6	-82.4
GHD004	181.1	20.3	-76.3	GHD006	849	303.1	-82.4
GHD004	211.1	21.5	-76.3	GHD007	20	62	-74.4
GHD004	241.1	22.9	-76.3	GHD007	64.1	64.4	-73.9
GHD004	271.1	22.7	-76.3	GHD007	94.1	64.1	-73.8
GHD004	301.1	21.4	-76.3	GHD007	124.1	61.8	-73.7
GHD004	334.1	21.7	-76.5	GHD007	154	62	-73.5
GHD004	364.1	20	-76.4	GHD007	183.7	61.6	-73.8



Hobbs Pipe 1 Completed Drill Hole Surveys

Hole ID	Depth	AZI (MGA94)	Dip	Hole ID	Depth	AZI (MGA94)	Dip
GHD004	401.1	20.7	-76.2	GHD007	214	65.6	-73.8
GHD004	430.1	20.7	-76.2	GHD007	244.1	63.3	-73.4
GHD004	466.1	21.9	-76.3	GHD007	274.1	62	-73.5
GHD004	490.1	22	-76.2	GHD007	304.1	62.6	-73.4
GHD004	520.1	22.4	-76.1	GHD007	334.1	64.3	-73.6
GHD004	550.1	22.3	-76	GHD007	364.1	61.8	-73.6
GHD004	598.1	19	-75.8	GHD007	394.1	61.2	-73.7
GHD004	652.1	21.1	-75.7	GHD007	430.1	61.6	-73.8
GHD004	703.1	19.7	-75.6	GHD007	464.1	65.1	-73.8
GHD004	751.1	18.6	-75.3	GHD007	490.1	65.3	-73.9
GHD004	802.1	18.1	-75.2	GHD007	521.1	65.3	-74
GHD004	856.1	18	-75.2	GHD007	551.1	65.4	-74.1
GHD004	880.1	18	-75.2	GHD007	580.1	64.6	-74.1
GHD004	904.1	18.3	-75	GHD007	610.1	64.1	-74.1
GHD004	952.1	17.6	-75	GHD007	640.1	65.4	-74.4
GHD004	1000.1	19.2	-75.1	GHD007	670.1	63.2	-74.6
GHD004	1030.1	19.4	-75.2	GHD007	703.1	65.8	-74.6
GHD005	15	101.3	-75.5	GHD007	733.1	63.5	-74.8
GHD005	48	107.4	-75.2	GHD007	763.1	64.9	-74.6
GHD005	78	106.9	-75.3	GHD007	799.1	66.8	-74.7
GHD005	108	104.6	-75.2	GHD007	829	66	-74.5
GHD005	138	105.5	-75.2	GHD007	859	70.2	-74.6
GHD005	174	104.8	-75.3	GHD007	895	67.8	-74.6
GHD005	204	106.4	-75.8				
GHD005	234	106.3	-75.5				
GHD005	264	107.7	-75.6				
GHD005	303	105.3	-75.5				
GHD005	333	110.3	-75.4				

Hobbs Pipe 1 Completed Drill Hole Specific Gravity (mineralised Monzodiorite only)

Hole ID	From (m)	To (m)	Length (m)	Diameter	Weight Dry (g)	Weight Wet (g)	Specific Gravity
GHD001	89.6	90	0.4	HQ 1/2 core	1611	1022	2.74
GHD001	165.5	165.9	0.4	HQ 1/2 core	1531	972	2.74
GHD001	379.9	380.3	0.4	HQ 1/2 core	1241	786	2.73
GHD001	566.9	567.5	0.6	HQ 1/2 core	2269	1447	2.76
GHD001	839.2	839.8	0.6	HQ 1/2 core	2155	1359	2.71
GHD001	827.1	827.5	0.4	HQ 1/2 core	1261	790	2.68
GHD001	530.5	531	0.5	HQ 1/2 core	1773	1111	2.68
GHD001	497.1	497.6	0.5	HQ 1/2 core	1846	1161	2.69
GHD001	230	230.5	0.5	HQ 1/2 core	1794	1131	2.71
GHD001	427.6	428.1	0.5	HQ 1/2 core	1529	956	2.67



Hobbs Pipe 1 Completed Drill Hole Specific Gravity (mineralised Monzodiorite only)

Hole ID	From (m)	To (m)	Length (m)	Diameter	Weight Dry (g)	Weight Wet (g)	Specific Gravity
GHD004	442.55	442.69	0.14	HQ 1/2 core	474.6	301	2.73
GHD004	564.92	565.06	0.14	HQ 1/2 core	414.2	301.6	3.68
GHD004	695.95	696.12	0.17	HQ 1/2 core	652	415	2.75
GHD004	823.92	824.06	0.14	HQ 1/2 core	393.1	251.7	2.78
GHD004	936.13	936.28	0.15	HQ 1/2 core	599	383.2	2.78
GHD004	987.39	987.55	0.16	HQ 1/2 core	1233.9	808.3	2.90
GHD005	20.7	20.82	0.12	HQ 1/2 core	1372	871	2.74
GHD005	100.5	100.65	0.15	HQ 1/2 core	504	329	2.88
GHD006	41.37	41.55	0.18	HQ 1/2 core	1294	826	2.76
GHD006	121.3	121.51	0.21	HQ 1/2 core	502	320	2.76
GHD006	205.2	205.33	0.13	HQ 1/2 core	406	254	2.67
GHD006	288.3	288.46	0.16	HQ 1/2 core	628	399	2.74
GHD006	372.4	372.57	0.17	HQ 1/2 core	623	398	2.77
GHD006	457.7	457.89	0.19	HQ 1/2 core	737	470	2.76
GHD006	561.1	561.21	0.11	HQ 1/2 core	365	232	2.74
GHD006	674.7	674.92	0.22	HQ 1/2 core	677	432	2.76
GHD007	63.7	63.82	0.12	HQ 1/2 core	443	283	2.77
GHD007	145	145.12	0.12	HQ 1/2 core	453	287	2.73

Hobbs Pipe 1 Completed Drill Hole Au Assays

Hole ID	From (m)	To (m)	Sample Type	Interval (m)	Au (ppm)
GHD001	0	2	1/2 Core HQ	2	1.65
GHD001	2	4	1/2 Core HQ	2	1.93
GHD001	4	6	1/2 Core HQ	2	1.75
GHD001	6	8	1/2 Core HQ	2	2.25
GHD001	8	10	1/2 Core HQ	2	1.39
GHD001	10	12	1/2 Core HQ	2	1.3
GHD001	12	14	1/2 Core HQ	2	2.08
GHD001	14	16	1/2 Core HQ	2	1.63
GHD001	16	18	1/2 Core HQ	2	1.16
GHD001	18	20	1/2 Core HQ	2	1.19
GHD001	20	22	1/2 Core HQ	2	0.96
GHD001	22	24	1/2 Core HQ	2	0.97
GHD001	24	26	1/2 Core HQ	2	1.45
GHD001	26	28	1/2 Core HQ	2	1.43
GHD001	28	30	1/2 Core HQ	2	2.09
GHD001	30	32	1/2 Core HQ	2	2.11
GHD001	32	34	1/2 Core HQ	2	1.3
GHD001	34	36	1/2 Core HQ	2	1.61
GHD001	36	38	1/2 Core HQ	2	1.42
GHD001	38	40	1/2 Core HQ	2	1.53

Hole ID	From (m)	To (m)	Sample Type	Interval (m)	Au (ppm)
GHD001	40	42	1/2 Core HQ	2	1.1
GHD001	42	44	1/2 Core HQ	2	1.33
GHD001	44	46	1/2 Core HQ	2	1.48
GHD001	46	48	1/2 Core HQ	2	2.16
GHD001	48	50	1/2 Core HQ	2	2.12
GHD001	50	52	1/2 Core HQ	2	2.14
GHD001	52	54	1/2 Core HQ	2	1.93
GHD001	54	56	1/2 Core HQ	2	1.5
GHD001	56	58	1/2 Core HQ	2	1.01
GHD001	58	60	1/2 Core HQ	2	0.41
GHD001	60	62	1/2 Core HQ	2	1.04
GHD001	62	64	1/2 Core HQ	2	1.33
GHD001	64	66	1/2 Core HQ	2	1.57
GHD001	66	68	1/2 Core HQ	2	1.63
GHD001	68	70	1/2 Core HQ	2	1.93
GHD001	70	72	1/2 Core HQ	2	1.92
GHD001	72	74	1/2 Core HQ	2	1.7
GHD001	74	76	1/2 Core HQ	2	1.43
GHD001	76	78	1/2 Core HQ	2	1.13
GHD001	78	80	1/2 Core HQ	2	1.4



Hole ID	From (m)	To (m)	Sample Type	Interval (m)	Au (ppm)
GHD001	80	82	1/2 Core HQ	2	1.33
GHD001	82	84	1/2 Core HQ	2	1.33
GHD001	84	86	1/2 Core HQ	2	0.96
GHD001	86	88	1/2 Core HQ	2	0.08
GHD001	88	90	1/2 Core HQ	2	0.57
GHD001	90	92	1/2 Core HQ	2	0.76
GHD001	92	94	1/2 Core HQ	2	0.69
GHD001	94	96	1/2 Core HQ	2	0.85
GHD001	96	98	1/2 Core HQ	2	0.49
GHD001	98	100	1/2 Core HQ	2	0.81
GHD001	100	102	1/2 Core HQ	2	0.7
GHD001	102	104	1/2 Core HQ	2	0.99
GHD001	104	106	1/2 Core HQ	2	0.42
GHD001	106	108	1/2 Core HQ	2	0.13
GHD001	108	110	1/2 Core HQ	2	0.65
GHD001	110	112	1/2 Core HQ	2	0.79
GHD001	112	114	1/2 Core HQ	2	0.57
GHD001	114	116	1/2 Core HQ	2	0.93
GHD001	116	118	1/2 Core HQ	2	0.81
GHD001	118	120	1/2 Core HQ	2	0.47
GHD001	120	122	1/2 Core HQ	2	0.75
GHD001	122	124	1/2 Core HQ	2	2.08
GHD001	124	126	1/2 Core HQ	2	0.98
GHD001	126	128	1/2 Core HQ	2	0.94
GHD001	128	130	1/2 Core HQ	2	0.74
GHD001	130	132	1/2 Core HQ	2	1.09
GHD001	132	134	1/2 Core HQ	2	0.96
GHD001	134	136	1/2 Core HQ	2	0.72
GHD001	136	138	1/2 Core HQ	2	1.13
GHD001	138	140	1/2 Core HQ	2	2.04
GHD001	140	142	1/2 Core HQ	2	0.74
GHD001	142	144	1/2 Core HQ	2	3.4
GHD001	144	146	1/2 Core HQ	2	2.21
GHD001	146	148	1/2 Core HQ	2	1.5
GHD001	148	150	1/2 Core HQ	2	1.82
GHD001	150	152	1/2 Core HQ	2	1.02
GHD001	152	154	1/2 Core HQ	2	0.69
GHD001	154	156	1/2 Core HQ	2	0.99
GHD001	156	158	1/2 Core HQ	2	1.25
GHD001	158	160	1/2 Core HQ	2	1.19
GHD001	160	162	1/2 Core HQ	2	1.23
GHD001	162	164	1/2 Core HQ	2	1.39
GHD001	164	166	1/2 Core HQ	2	1.58
GHD001	166	168	1/2 Core HQ	2	1.06

Hole ID	From (m)	To (m)	Sample Type	Interval (m)	Au (ppm)
GHD001	168	170	1/2 Core HQ	2	1.58
GHD001	170	172	1/2 Core HQ	2	1.83
GHD001	172	174	1/2 Core HQ	2	1.36
GHD001	174	176	1/2 Core HQ	2	1.39
GHD001	176	178	1/2 Core HQ	2	1.2
GHD001	178	180	1/2 Core HQ	2	0.89
GHD001	180	182	1/2 Core HQ	2	1.24
GHD001	182	184	1/2 Core HQ	2	0.43
GHD001	184	186	1/2 Core HQ	2	1.08
GHD001	186	188	1/2 Core HQ	2	0.86
GHD001	188	190	1/2 Core HQ	2	0.86
GHD001	190	192	1/2 Core HQ	2	0.95
GHD001	192	194	1/2 Core HQ	2	0.83
GHD001	194	196	1/2 Core HQ	2	1.23
GHD001	196	198	1/2 Core HQ	2	0.86
GHD001	198	200	1/2 Core HQ	2	0.94
GHD001	200	202	1/2 Core HQ	2	0.34
GHD001	202	204	1/2 Core HQ	2	0.15
GHD001	204	206	1/2 Core HQ	2	0.63
GHD001	206	208	1/2 Core HQ	2	1.21
GHD001	208	210	1/2 Core HQ	2	1.4
GHD001	210	212	1/2 Core HQ	2	0.74
GHD001	212	214	1/2 Core HQ	2	1.23
GHD001	214	216	1/2 Core HQ	2	0.92
GHD001	216	218	1/2 Core HQ	2	0.44
GHD001	218	220	1/2 Core HQ	2	0.75
GHD001	220	222	1/2 Core HQ	2	0.57
GHD001	222	224	1/2 Core HQ	2	0.72
GHD001	224	226	1/2 Core HQ	2	1.32
GHD001	226	228	1/2 Core HQ	2	0.8
GHD001	228	230	1/2 Core HQ	2	0.92
GHD001	230	232	1/2 Core HQ	2	1.21
GHD001	232	234	1/2 Core HQ	2	1.06
GHD001	234	236	1/2 Core HQ	2	0.78
GHD001	236	238	1/2 Core HQ	2	4.52
GHD001	238	240	1/2 Core HQ	2	1.32
GHD001	240	242	1/2 Core HQ	2	1.9
GHD001	242	244	1/2 Core HQ	2	1.76
GHD001	244	246	1/2 Core HQ	2	1.58
GHD001	246	248	1/2 Core HQ	2	1.53
GHD001	248	250	1/2 Core HQ	2	0.82
GHD001	250	252	1/2 Core HQ	2	1.97
GHD001	252	254	1/2 Core HQ	2	1.08
GHD001	254	256	1/2 Core HQ	2	1.13
GHD001	256	258	1/2 Core HQ	2	0.74



Hole ID	From (m)	To (m)	Sample Type	Interval (m)	Au (ppm)
GHD001	258	260	1/2 Core HQ	2	1.82
GHD001	260	262	1/2 Core HQ	2	0.88
GHD001	262	264	1/2 Core HQ	2	1.07
GHD001	264	266	1/2 Core HQ	2	1.75
GHD001	266	268	1/2 Core HQ	2	0.6
GHD001	268	270	1/2 Core HQ	2	1.33
GHD001	270	272	1/2 Core HQ	2	1.77
GHD001	272	274	1/2 Core HQ	2	2.61
GHD001	274	276	1/2 Core HQ	2	2.31
GHD001	276	278	1/2 Core HQ	2	1.59
GHD001	278	280	1/2 Core HQ	2	1.31
GHD001	280	282	1/2 Core HQ	2	1.68
GHD001	282	284	1/2 Core HQ	2	2.5
GHD001	284	286	1/2 Core HQ	2	1.88
GHD001	286	288	1/2 Core HQ	2	1.55
GHD001	288	290	1/2 Core HQ	2	1.5
GHD001	290	292	1/2 Core HQ	2	1.39
GHD001	292	294	1/2 Core HQ	2	1.5
GHD001	294	296	1/2 Core HQ	2	1.5
GHD001	296	298	1/2 Core HQ	2	1.64
GHD001	298	300	1/2 Core HQ	2	1.71
GHD001	300	302	1/2 Core HQ	2	3.52
GHD001	302	304	1/2 Core HQ	2	2.03
GHD001	304	306	1/2 Core HQ	2	1.92
GHD001	306	308	1/2 Core HQ	2	2.72
GHD001	308	310	1/2 Core HQ	2	2.55
GHD001	310	312	1/2 Core HQ	2	2.04
GHD001	312	314	1/2 Core HQ	2	2.77
GHD001	314	316	1/2 Core HQ	2	1.42
GHD001	316	318	1/2 Core HQ	2	1.1
GHD001	318	320	1/2 Core HQ	2	1.91
GHD001	320	322	1/2 Core HQ	2	0.88
GHD001	322	324	1/2 Core HQ	2	2.27
GHD001	324	326	1/2 Core HQ	2	1.42
GHD001	326	328	1/2 Core HQ	2	1.87
GHD001	328	330	1/2 Core HQ	2	1.86
GHD001	330	332	1/2 Core HQ	2	1.51
GHD001	332	334	1/2 Core HQ	2	1.99
GHD001	334	336	1/2 Core HQ	2	1.78
GHD001	336	338	1/2 Core HQ	2	1.07
GHD001	338	340	1/2 Core HQ	2	1.13
GHD001	340	342	1/2 Core HQ	2	1.15
GHD001	342	344	1/2 Core HQ	2	1.17
GHD001	344	346	1/2 Core HQ	2	1.91

Hole ID	From (m)	To (m)	Sample Type	Interval (m)	Au (ppm)
GHD001	346	348	1/2 Core HQ	2	1.92
GHD001	348	350	1/2 Core HQ	2	2.35
GHD001	350	352	1/2 Core HQ	2	1.35
GHD001	352	354	1/2 Core HQ	2	1
GHD001	354	356	1/2 Core HQ	2	1.07
GHD001	356	358	1/2 Core HQ	2	1.16
GHD001	358	360	1/2 Core HQ	2	1.36
GHD001	360	362	1/2 Core HQ	2	1.32
GHD001	362	364	1/2 Core HQ	2	1.31
GHD001	364	366	1/2 Core HQ	2	1.77
GHD001	366	368	1/2 Core HQ	2	1.6
GHD001	368	370	1/2 Core HQ	2	1.93
GHD001	370	372	1/2 Core HQ	2	1.58
GHD001	372	374	1/2 Core HQ	2	1.6
GHD001	374	376	1/2 Core HQ	2	1.78
GHD001	376	378	1/2 Core HQ	2	1.65
GHD001	378	380	1/2 Core HQ	2	1.11
GHD001	380	382	1/2 Core HQ	2	0.95
GHD001	382	384	1/2 Core HQ	2	0.82
GHD001	384	386	1/2 Core HQ	2	1.09
GHD001	386	388	1/2 Core HQ	2	1.1
GHD001	388	390	1/2 Core HQ	2	1.12
GHD001	390	392	1/2 Core HQ	2	1.09
GHD001	392	394	1/2 Core HQ	2	1.29
GHD001	394	396	1/2 Core HQ	2	1.26
GHD001	396	398	1/2 Core HQ	2	0.56
GHD001	398	400	1/2 Core HQ	2	0.71
GHD001	400	402	1/2 Core HQ	2	0.91
GHD001	402	404	1/2 Core HQ	2	0.82
GHD001	404	406	1/2 Core HQ	2	0.69
GHD001	406	408	1/2 Core HQ	2	0.5
GHD001	408	410	1/2 Core HQ	2	0.24
GHD001	410	412	1/2 Core HQ	2	0.25
GHD001	412	414	1/2 Core HQ	2	0.43
GHD001	414	416	1/2 Core HQ	2	0.95
GHD001	416	418	1/2 Core HQ	2	0.22
GHD001	418	420	1/2 Core HQ	2	0.11
GHD001	420	422	1/2 Core HQ	2	0.41
GHD001	422	424	1/2 Core HQ	2	0.39
GHD001	424	426	1/2 Core HQ	2	0.43
GHD001	426	428	1/2 Core HQ	2	0.72
GHD001	428	430	1/2 Core HQ	2	1.51
GHD001	430	432	1/2 Core HQ	2	0.27
GHD001	432	434	1/2 Core HQ	2	1.68
GHD001	434	436	1/2 Core HQ	2	1.07



Hole ID	From (m)	To (m)	Sample Type	Interval (m)	Au (ppm)
GHD001	436	438	1/2 Core HQ	2	1.09
GHD001	438	440	1/2 Core HQ	2	0.52
GHD001	440	442	1/2 Core HQ	2	1.62
GHD001	442	444	1/2 Core HQ	2	1.89
GHD001	444	446	1/2 Core HQ	2	1.52
GHD001	446	448	1/2 Core HQ	2	1.05
GHD001	448	450	1/2 Core HQ	2	1.24
GHD001	450	452	1/2 Core HQ	2	1.34
GHD001	452	454	1/2 Core HQ	2	1.39
GHD001	454	456	1/2 Core HQ	2	1.01
GHD001	456	458	1/2 Core HQ	2	1.09
GHD001	458	460	1/2 Core HQ	2	1.06
GHD001	460	462	1/2 Core HQ	2	1.01
GHD001	462	464	1/2 Core HQ	2	0.98
GHD001	464	466	1/2 Core HQ	2	1.25
GHD001	466	468	1/2 Core HQ	2	1.1
GHD001	468	470	1/2 Core HQ	2	0.8
GHD001	470	472	1/2 Core HQ	2	1.12
GHD001	472	474	1/2 Core HQ	2	0.65
GHD001	474	476	1/2 Core HQ	2	0.8
GHD001	476	478	1/2 Core HQ	2	1.04
GHD001	478	480	1/2 Core HQ	2	1.23
GHD001	480	482	1/2 Core HQ	2	0.72
GHD001	482	484	1/2 Core HQ	2	1.14
GHD001	484	486	1/2 Core HQ	2	0.64
GHD001	486	488	1/2 Core HQ	2	0.97
GHD001	488	490	1/2 Core HQ	2	0.65
GHD001	490	492	1/2 Core HQ	2	0.82
GHD001	492	494	1/2 Core HQ	2	0.72
GHD001	494	496	1/2 Core HQ	2	0.66
GHD001	496	498	1/2 Core HQ	2	0.53
GHD001	498	500	1/2 Core HQ	2	0.99
GHD001	500	502	1/2 Core HQ	2	1.77
GHD001	502	504	1/2 Core HQ	2	1
GHD001	504	506	1/2 Core HQ	2	1.02
GHD001	506	508	1/2 Core HQ	2	0.93
GHD001	508	510	1/2 Core HQ	2	0.65
GHD001	510	512	1/2 Core HQ	2	0.77
GHD001	512	514	1/2 Core HQ	2	0.69
GHD001	514	516	1/2 Core HQ	2	0.73
GHD001	516	518	1/2 Core HQ	2	0.93
GHD001	518	520	1/2 Core HQ	2	0.86
GHD001	520	522	1/2 Core HQ	2	0.68
GHD001	522	524	1/2 Core HQ	2	0.76

Hole ID	From (m)	To (m)	Sample Type	Interval (m)	Au (ppm)
GHD001	524	526	1/2 Core HQ	2	1.32
GHD001	526	528	1/2 Core HQ	2	1.15
GHD001	528	530	1/2 Core HQ	2	1.14
GHD001	530	532	1/2 Core HQ	2	0.32
GHD001	532	534	1/2 Core HQ	2	0.48
GHD001	534	536	1/2 Core HQ	2	0.88
GHD001	536	538	1/2 Core HQ	2	1.09
GHD001	538	540	1/2 Core HQ	2	1.07
GHD001	540	542	1/2 Core HQ	2	1.05
GHD001	542	544	1/2 Core HQ	2	1.08
GHD001	544	546	1/2 Core HQ	2	0.5
GHD001	546	548	1/2 Core HQ	2	0.53
GHD001	548	550	1/2 Core HQ	2	0.63
GHD001	550	552	1/2 Core HQ	2	0.65
GHD001	552	554	1/2 Core HQ	2	0.42
GHD001	554	556	1/2 Core HQ	2	0.75
GHD001	556	558	1/2 Core HQ	2	1.01
GHD001	558	560	1/2 Core HQ	2	1.26
GHD001	560	562	1/2 Core HQ	2	1.32
GHD001	562	564	1/2 Core HQ	2	0.66
GHD001	564	566	1/2 Core HQ	2	0.75
GHD001	566	568	1/2 Core HQ	2	1.53
GHD001	568	570	1/2 Core HQ	2	0.3
GHD001	570	572	1/2 Core HQ	2	1.35
GHD001	572	574	1/2 Core HQ	2	1.37
GHD001	574	576	1/2 Core HQ	2	1.96
GHD001	576	578	1/2 Core HQ	2	0.94
GHD001	578	580	1/2 Core HQ	2	1.85
GHD001	580	582	1/2 Core HQ	2	1.37
GHD001	582	584	1/2 Core HQ	2	1.27
GHD001	584	586	1/2 Core HQ	2	1.34
GHD001	586	588	1/2 Core HQ	2	0.89
GHD001	588	590	1/2 Core HQ	2	1.13
GHD001	590	592	1/2 Core HQ	2	1.44
GHD001	592	594	1/2 Core HQ	2	1.04
GHD001	594	596	1/2 Core HQ	2	0.99
GHD001	596	598	1/2 Core HQ	2	1.07
GHD001	598	600	1/2 Core HQ	2	1.21
GHD001	600	602	1/2 Core HQ	2	0.89
GHD001	602	604	1/2 Core HQ	2	1.41
GHD001	604	606	1/2 Core HQ	2	1.2
GHD001	606	608	1/2 Core HQ	2	1.57
GHD001	608	610	1/2 Core HQ	2	1.09
GHD001	610	612	1/2 Core HQ	2	1.13
GHD001	612	614	1/2 Core HQ	2	1.35



Hole ID	From (m)	To (m)	Sample Type	Interval (m)	Au (ppm)
GHD001	614	616	1/2 Core HQ	2	1.31
GHD001	616	618	1/2 Core HQ	2	0.99
GHD001	618	620	1/2 Core HQ	2	0.95
GHD001	620	622	1/2 Core HQ	2	1.19
GHD001	622	624	1/2 Core HQ	2	1.62
GHD001	624	626	1/2 Core HQ	2	1.3
GHD001	626	628	1/2 Core HQ	2	1.24
GHD001	628	630	1/2 Core HQ	2	1.5
GHD001	630	632	1/2 Core HQ	2	1.34
GHD001	632	634	1/2 Core HQ	2	1.21
GHD001	634	636	1/2 Core HQ	2	0.93
GHD001	636	638	1/2 Core HQ	2	1.57
GHD001	638	640	1/2 Core HQ	2	1.8
GHD001	640	642	1/2 Core HQ	2	1.88
GHD001	642	644	1/2 Core HQ	2	1.33
GHD001	644	646	1/2 Core HQ	2	1.62
GHD001	646	648	1/2 Core HQ	2	1.39
GHD001	648	650	1/2 Core HQ	2	0.88
GHD001	650	652	1/2 Core HQ	2	1.02
GHD001	652	654	1/2 Core HQ	2	2.16
GHD001	654	656	1/2 Core HQ	2	1.24
GHD001	656	658	1/2 Core HQ	2	1.5
GHD001	658	660	1/2 Core HQ	2	1.46
GHD001	660	662	1/2 Core HQ	2	1.5
GHD001	662	664	1/2 Core HQ	2	1.4
GHD001	664	666	1/2 Core HQ	2	2.39
GHD001	666	668	1/2 Core HQ	2	1.37
GHD001	668	670	1/2 Core HQ	2	0.63
GHD001	670	672	1/2 Core HQ	2	1.62
GHD001	672	674	1/2 Core HQ	2	0.67
GHD001	674	676	1/2 Core HQ	2	2.35
GHD001	676	678	1/2 Core HQ	2	2.42
GHD001	678	680	1/2 Core HQ	2	1.86
GHD001	680	682	1/2 Core HQ	2	3.53
GHD001	682	684	1/2 Core HQ	2	2.12
GHD001	684	686	1/2 Core HQ	2	1.64
GHD001	686	688	1/2 Core HQ	2	1.36
GHD001	688	690	1/2 Core HQ	2	1.06
GHD001	690	692	1/2 Core HQ	2	0.87
GHD001	692	694	1/2 Core HQ	2	0.71
GHD001	694	696	1/2 Core HQ	2	1.36
GHD001	696	698	1/2 Core HQ	2	0.89
GHD001	698	700	1/2 Core HQ	2	0.71
GHD001	700	702	1/2 Core HQ	2	1.02

Hole ID	From (m)	To (m)	Sample Type	Interval (m)	Au (ppm)
GHD001	702	704	1/2 Core HQ	2	0.96
GHD001	704	706	1/2 Core HQ	2	0.93
GHD001	706	708	1/2 Core HQ	2	1.69
GHD001	708	710	1/2 Core HQ	2	1.9
GHD001	710	712	1/2 Core HQ	2	4.37
GHD001	712	714	1/2 Core HQ	2	1.98
GHD001	714	716	1/2 Core HQ	2	3.12
GHD001	716	718	1/2 Core HQ	2	1.46
GHD001	718	720	1/2 Core HQ	2	1.11
GHD001	720	722	1/2 Core HQ	2	0.67
GHD001	722	724	1/2 Core HQ	2	0.82
GHD001	724	726	1/2 Core HQ	2	0.48
GHD001	726	728	1/2 Core HQ	2	0.71
GHD001	728	730	1/2 Core HQ	2	0.92
GHD001	730	732	1/2 Core HQ	2	0.65
GHD001	732	734	1/2 Core HQ	2	0.67
GHD001	734	736	1/2 Core HQ	2	0.84
GHD001	736	738	1/2 Core HQ	2	0.97
GHD001	738	740	1/2 Core HQ	2	0.66
GHD001	740	742	1/2 Core HQ	2	0.67
GHD001	742	744	1/2 Core HQ	2	0.69
GHD001	744	746	1/2 Core HQ	2	0.57
GHD001	746	748	1/2 Core HQ	2	0.54
GHD001	748	750	1/2 Core HQ	2	0.71
GHD001	750	752	1/2 Core HQ	2	1.01
GHD001	752	754	1/2 Core HQ	2	1.82
GHD001	754	756	1/2 Core HQ	2	0.87
GHD001	756	758	1/2 Core HQ	2	0.78
GHD001	758	760	1/2 Core HQ	2	0.93
GHD001	760	762	1/2 Core HQ	2	1.48
GHD001	762	764	1/2 Core HQ	2	1.34
GHD001	764	766	1/2 Core HQ	2	1.51
GHD001	766	768	1/2 Core HQ	2	2.08
GHD001	768	770	1/2 Core HQ	2	1.2
GHD001	770	772	1/2 Core HQ	2	0.79
GHD001	772	774	1/2 Core HQ	2	0.61
GHD001	774	776	1/2 Core HQ	2	1.53
GHD001	776	778	1/2 Core HQ	2	1.99
GHD001	778	780	1/2 Core HQ	2	2.27
GHD001	780	782	1/2 Core HQ	2	2.81
GHD001	782	784	1/2 Core HQ	2	1.55
GHD001	784	786	1/2 Core HQ	2	1.17
GHD001	786	788	1/2 Core HQ	2	1.19
GHD001	788	790	1/2 Core HQ	2	1.28
GHD001	790	792	1/2 Core HQ	2	1.2



Hole ID	From (m)	To (m)	Sample Type	Interval (m)	Au (ppm)
GHD001	792	794	1/2 Core HQ	2	0.56
GHD001	794	796	1/2 Core HQ	2	0.54
GHD001	796	798	1/2 Core HQ	2	1.05
GHD001	798	800	1/2 Core HQ	2	0.76
GHD001	800	802	1/2 Core HQ	2	0.8
GHD001	802	804	1/2 Core HQ	2	0.73
GHD001	804	806	1/2 Core HQ	2	0.69
GHD001	806	808	1/2 Core HQ	2	0.28
GHD001	808	810	1/2 Core HQ	2	0.12
GHD001	810	812	1/2 Core HQ	2	0.28
GHD001	812	814	1/2 Core HQ	2	0.34
GHD001	814	816	1/2 Core HQ	2	0.14
GHD001	816	818	1/2 Core HQ	2	0.15
GHD001	818	820	1/2 Core HQ	2	0.27
GHD001	820	822	1/2 Core HQ	2	0.46
GHD001	822	824	1/2 Core HQ	2	0.1
GHD001	824	826	1/2 Core HQ	2	0.76
GHD001	826	828	1/2 Core HQ	2	0.18
GHD001	828	830	1/2 Core HQ	2	0.48
GHD001	830	832	1/2 Core HQ	2	0.27
GHD001	832	834	1/2 Core HQ	2	0.06
GHD001	834	836	1/2 Core HQ	2	0.36
GHD001	836	838	1/2 Core HQ	2	0.11
GHD001	838	840	1/2 Core HQ	2	0.29
GHD001	840	842	1/2 Core HQ	2	0.36
GHD001	842	844	1/2 Core HQ	2	0.75
GHD001	844	846	1/2 Core HQ	2	0.71
GHD001	846	848	1/2 Core HQ	2	0.56
GHD001	848	850	1/2 Core HQ	2	0.96
GHD001	850	852	1/2 Core HQ	2	0.42
GHD001	852	854	1/2 Core HQ	2	0.21
GHD001	854	856	1/2 Core HQ	2	0.21
GHD001	856	858	1/2 Core HQ	2	0.11
GHD001	858	860	1/2 Core HQ	2	0.18
GHD001	860	862	1/2 Core HQ	2	0.44
GHD001	862	864	1/2 Core HQ	2	0.41
GHD001	864	866	1/2 Core HQ	2	0.46
GHD001	866	868	1/2 Core HQ	2	0.23
GHD001	868	870	1/2 Core HQ	2	0.19
GHD001	870	872	1/2 Core HQ	2	0.38
GHD001	872	874	1/2 Core HQ	2	0.99
GHD001	874	876	1/2 Core HQ	2	0.68
GHD001	876	878	1/2 Core HQ	2	0.58
GHD001	878	880	1/2 Core HQ	2	1.24

Hole ID	From (m)	To (m)	Sample Type	Interval (m)	Au (ppm)
GHD001	880	882	1/2 Core HQ	2	2.16
GHD001	882	884	1/2 Core HQ	2	2.09
GHD001	884	886	1/2 Core HQ	2	0.71
GHD001	886	888	1/2 Core HQ	2	0.52
GHD001	888	890	1/2 Core HQ	2	0.14
GHD001	890	892	1/2 Core HQ	2	0.14
GHD001	892	894	1/2 Core HQ	2	<0.01
GHD001	894	896	1/2 Core HQ	2	0.11
GHD001	896	898	1/2 Core HQ	2	0.15
GHD001	898	900	1/2 Core HQ	2	0.04
GHD001	900	902	1/2 Core HQ	2	0.02
GHD001	902	904	1/2 Core HQ	2	0.15
GHD001	904	906	1/2 Core HQ	2	0.09
GHD001	906	908	1/2 Core HQ	2	0.16
GHD001	908	910	1/2 Core HQ	2	0.09
GHD001	910	912	1/2 Core HQ	2	0.06
GHD001	912	914	1/2 Core HQ	2	0.02
GHD001	914	916	1/2 Core HQ	2	0.09
GHD001	916	918	1/2 Core HQ	2	0.02
GHD001	918	920	1/2 Core HQ	2	<0.01
GHD001	920	922	1/2 Core HQ	2	0.03
GHD001	922	924	1/2 Core HQ	2	0.07
GHD001	924	926	1/2 Core HQ	2	0.12
GHD001	926	928	1/2 Core HQ	2	0.03
GHD001	928	930	1/2 Core HQ	2	0.03
GHD001	930	932	1/2 Core HQ	2	0.05
GHD001	932	934	1/2 Core HQ	2	0.28
GHD001	934	936	1/2 Core HQ	2	0.34
GHD001	936	938	1/2 Core HQ	2	0.26
GHD001	938	940	1/2 Core HQ	2	0.49
GHD001	940	942	1/2 Core HQ	2	0.15
GHD001	942	944	1/2 Core HQ	2	0.16
GHD001	944	946	1/2 Core HQ	2	0.32
GHD001	946	948	1/2 Core HQ	2	0.02
GHD001	948	950	1/2 Core HQ	2	0.36
GHD001	950	952	1/2 Core HQ	2	0.03
GHD001	952	954	1/2 Core HQ	2	0.01
GHD001	954	956	1/2 Core HQ	2	0.15
GHD001	956	958	1/2 Core HQ	2	0.71
GHD001	958	960	1/2 Core HQ	2	0.99
GHD001	960	962	1/2 Core HQ	2	1.55
GHD001	962	964	1/2 Core HQ	2	0.02
GHD001	964	966	1/2 Core HQ	2	0.03
GHD001	966	968	1/2 Core HQ	2	0.05
GHD001	968	970	1/2 Core HQ	2	0.02



Hole ID	From (m)	To (m)	Sample Type	Interval (m)	Au (ppm)
GHD001	970	972	1/2 Core HQ	2	0.05
GHD001	972	974	1/2 Core HQ	2	0.12
GHD001	974	976	1/2 Core HQ	2	0.04
GHD001	976	978	1/2 Core HQ	2	0.01
GHD001	978	980	1/2 Core HQ	2	0.01
GHD001	980	982	1/2 Core HQ	2	0.06
GHD001	982	984	1/2 Core HQ	2	0.02
GHD001	984	986	1/2 Core HQ	2	0.11
GHD001	986	988	1/2 Core HQ	2	0.02
GHD001	988	990	1/2 Core HQ	2	<0.01
GHD001	990	992	1/2 Core HQ	2	0.03
GHD001	992	994	1/2 Core HQ	2	0.02
GHD001	994	996	1/2 Core HQ	2	0.05
GHD001	996	998	1/2 Core HQ	2	0.07
GHD001	998	1000	1/2 Core HQ	2	0.03
GHD001	1000	1002	1/2 Core HQ	2	0.02
GHD001	1002	1004	1/2 Core HQ	2	0.01
GHD001	1004	1006	1/2 Core HQ	2	<0.01
GHD001	1006	1008	1/2 Core HQ	2	0.16
GHD001	1008	1010	1/2 Core HQ	2	0.11
GHD001	1010	1012	1/2 Core HQ	2	0.08
GHD001	1012	1014	1/2 Core HQ	2	0.6
GHD001	1014	1016	1/2 Core HQ	2	0.02
GHD001	1016	1018	1/2 Core HQ	2	0.01
GHD001	1018	1020	1/2 Core HQ	2	0.05
GHD001	1020	1022	1/2 Core HQ	2	0.09
GHD001	1022	1024	1/2 Core HQ	2	0.02
GHD001	1024	1026	1/2 Core HQ	2	0.26
GHD001	1026	1028	1/2 Core HQ	2	0.29
GHD001	1028	1029.6	1/2 Core HQ	1.6	0.12
GHD004	328	330	1/2 Core HQ	2	0.01
GHD004	330	332	1/2 Core HQ	2	0.02
GHD004	332	334	1/2 Core HQ	2	0.06
GHD004	334	336	1/2 Core HQ	2	0.29
GHD004	336	338	1/2 Core HQ	2	1.25
GHD004	338	340	1/2 Core HQ	2	2.27
GHD004	340	342	1/2 Core HQ	2	1.88
GHD004	342	344	1/2 Core HQ	2	1.33
GHD004	344	346	1/2 Core HQ	2	1.91
GHD004	346	348	1/2 Core HQ	2	1.9
GHD004	348	350	1/2 Core HQ	2	1.21
GHD004	350	352	1/2 Core HQ	2	2
GHD004	352	354	1/2 Core HQ	2	2.51
GHD004	354	356	1/2 Core HQ	2	2.24

Hole ID	From (m)	To (m)	Sample Type	Interval (m)	Au (ppm)
GHD004	356	358	1/2 Core HQ	2	1.41
GHD004	358	360	1/2 Core HQ	2	0.72
GHD004	360	362	1/2 Core HQ	2	1.03
GHD004	362	364	1/2 Core HQ	2	1.05
GHD004	364	366	1/2 Core HQ	2	0.78
GHD004	366	368	1/2 Core HQ	2	1.7
GHD004	368	370	1/2 Core HQ	2	0.61
GHD004	370	372	1/2 Core HQ	2	0.3
GHD004	372	374	1/2 Core HQ	2	1.08
GHD004	374	376	1/2 Core HQ	2	0.63
GHD004	376	378	1/2 Core HQ	2	0.87
GHD004	378	380	1/2 Core HQ	2	0.56
GHD004	380	382	1/2 Core HQ	2	0.64
GHD004	382	384	1/2 Core HQ	2	0.96
GHD004	384	386	1/2 Core HQ	2	0.01
GHD004	386	388	1/2 Core HQ	2	0.5
GHD004	388	390	1/2 Core HQ	2	1.72
GHD004	390	392	1/2 Core HQ	2	4.49
GHD004	392	394	1/2 Core HQ	2	1.79
GHD004	394	396	1/2 Core HQ	2	1.82
GHD004	396	398	1/2 Core HQ	2	3.1
GHD004	398	400	1/2 Core HQ	2	2.19
GHD004	400	402	1/2 Core HQ	2	1.94
GHD004	402	404	1/2 Core HQ	2	1.76
GHD004	404	406	1/2 Core HQ	2	1.82
GHD004	406	408	1/2 Core HQ	2	1.26
GHD004	408	410	1/2 Core HQ	2	1.44
GHD004	410	412	1/2 Core HQ	2	1.2
GHD004	412	414	1/2 Core HQ	2	1.25
GHD004	414	416	1/2 Core HQ	2	0.97
GHD004	416	418	1/2 Core HQ	2	0.53
GHD004	418	420	1/2 Core HQ	2	0.95
GHD004	420	422	1/2 Core HQ	2	1.14
GHD004	422	424	1/2 Core HQ	2	1.09
GHD004	424	426	1/2 Core HQ	2	1.35
GHD004	426	428	1/2 Core HQ	2	0.95
GHD004	428	430	1/2 Core HQ	2	1.12
GHD004	430	432	1/2 Core HQ	2	0.97
GHD004	432	434	1/2 Core HQ	2	0.73
GHD004	434	436	1/2 Core HQ	2	1.09
GHD004	436	438	1/2 Core HQ	2	1.12
GHD004	438	440	1/2 Core HQ	2	2.64
GHD004	440	442	1/2 Core HQ	2	1.91
GHD004	442	444	1/2 Core HQ	2	2.3
GHD004	444	446	1/2 Core HQ	2	1.41



Hole ID	From (m)	To (m)	Sample Type	Interval (m)	Au (ppm)
GHD004	446	448	1/2 Core HQ	2	0.68
GHD004	448	450	1/2 Core HQ	2	1.29
GHD004	450	452	1/2 Core HQ	2	1.27
GHD004	452	454	1/2 Core HQ	2	1.21
GHD004	454	456	1/2 Core HQ	2	1.26
GHD004	456	458	1/2 Core HQ	2	1.5
GHD004	458	460	1/2 Core HQ	2	1.51
GHD004	460	462	1/2 Core HQ	2	1.11
GHD004	462	464	1/2 Core HQ	2	1.34
GHD004	464	466	1/2 Core HQ	2	0.91
GHD004	466	468	1/2 Core HQ	2	0.8
GHD004	468	470	1/2 Core HQ	2	1.1
GHD004	470	472	1/2 Core HQ	2	0.81
GHD004	472	474	1/2 Core HQ	2	0.83
GHD004	474	476	1/2 Core HQ	2	0.94
GHD004	476	478	1/2 Core HQ	2	1.26
GHD004	478	480	1/2 Core HQ	2	1.75
GHD004	480	482	1/2 Core HQ	2	0.71
GHD004	482	484	1/2 Core HQ	2	0.79
GHD004	484	486	1/2 Core HQ	2	0.67
GHD004	486	488	1/2 Core HQ	2	0.71
GHD004	488	490	1/2 Core HQ	2	1.21
GHD004	490	492	1/2 Core HQ	2	1.23
GHD004	492	494	1/2 Core HQ	2	1.36
GHD004	494	496	1/2 Core HQ	2	1.62
GHD004	496	498	1/2 Core HQ	2	1.04
GHD004	498	500	1/2 Core HQ	2	0.98
GHD004	500	502	1/2 Core HQ	2	1.31
GHD004	502	504	1/2 Core HQ	2	1.44
GHD004	504	506	1/2 Core HQ	2	1.15
GHD004	506	508	1/2 Core HQ	2	1.6
GHD004	508	510	1/2 Core HQ	2	1.06
GHD004	510	512	1/2 Core HQ	2	1.49
GHD004	512	514	1/2 Core HQ	2	1.29
GHD004	514	516	1/2 Core HQ	2	1.24
GHD004	516	518	1/2 Core HQ	2	1.62
GHD004	518	520	1/2 Core HQ	2	1.02
GHD004	520	522	1/2 Core HQ	2	0.79
GHD004	522	524	1/2 Core HQ	2	0.98
GHD004	524	526	1/2 Core HQ	2	1.22
GHD004	526	528	1/2 Core HQ	2	1.38
GHD004	528	530	1/2 Core HQ	2	1.64
GHD004	530	532	1/2 Core HQ	2	1.32
GHD004	532	534	1/2 Core HQ	2	0.98

Hole ID	From (m)	To (m)	Sample Type	Interval (m)	Au (ppm)
GHD004	534	536	1/2 Core HQ	2	1.38
GHD004	536	538	1/2 Core HQ	2	1.53
GHD004	538	540	1/2 Core HQ	2	1.49
GHD004	540	542	1/2 Core HQ	2	1.31
GHD004	542	544	1/2 Core HQ	2	1.01
GHD004	544	546	1/2 Core HQ	2	1.24
GHD004	546	548	1/2 Core HQ	2	1.47
GHD004	548	550	1/2 Core HQ	2	1.64
GHD004	550	552	1/2 Core HQ	2	1.67
GHD004	552	554	1/2 Core HQ	2	1.25
GHD004	554	556	1/2 Core HQ	2	1.1
GHD004	556	558	1/2 Core HQ	2	1.02
GHD004	558	560	1/2 Core HQ	2	1.91
GHD004	560	562	1/2 Core HQ	2	1.44
GHD004	562	564	1/2 Core HQ	2	0.7
GHD004	564	566	1/2 Core HQ	2	0.57
GHD004	566	568	1/2 Core HQ	2	0.98
GHD004	568	570	1/2 Core HQ	2	0.65
GHD004	570	572	1/2 Core HQ	2	1.05
GHD004	572	574	1/2 Core HQ	2	1.02
GHD004	574	576	1/2 Core HQ	2	0.85
GHD004	576	578	1/2 Core HQ	2	1.43
GHD004	578	580	1/2 Core HQ	2	0.77
GHD004	580	582	1/2 Core HQ	2	0.95
GHD004	582	584	1/2 Core HQ	2	0.87
GHD004	584	586	1/2 Core HQ	2	1.23
GHD004	586	588	1/2 Core HQ	2	0.8
GHD004	588	590	1/2 Core HQ	2	0.95
GHD004	590	592	1/2 Core HQ	2	0.77
GHD004	592	594	1/2 Core HQ	2	0.67
GHD004	594	596	1/2 Core HQ	2	0.61
GHD004	596	598	1/2 Core HQ	2	0.47
GHD004	598	600	1/2 Core HQ	2	0.73
GHD004	600	602	1/2 Core HQ	2	1.27
GHD004	602	604	1/2 Core HQ	2	0.93
GHD004	604	606	1/2 Core HQ	2	1.15
GHD004	606	608	1/2 Core HQ	2	0.9
GHD004	608	610	1/2 Core HQ	2	1.13
GHD004	610	612	1/2 Core HQ	2	1.17
GHD004	612	614	1/2 Core HQ	2	1.1
GHD004	614	616	1/2 Core HQ	2	0.8
GHD004	616	618	1/2 Core HQ	2	0.66
GHD004	618	620	1/2 Core HQ	2	2.47
GHD004	620	622	1/2 Core HQ	2	1.74
GHD004	622	624	1/2 Core HQ	2	2.48



Hole ID	From (m)	To (m)	Sample Type	Interval (m)	Au (ppm)
GHD004	624	626	1/2 Core HQ	2	1.02
GHD004	626	628	1/2 Core HQ	2	2.14
GHD004	628	630	1/2 Core HQ	2	1.17
GHD004	630	632	1/2 Core HQ	2	1.54
GHD004	632	634	1/2 Core HQ	2	1.16
GHD004	634	636	1/2 Core HQ	2	2.02
GHD004	636	638	1/2 Core HQ	2	1.7
GHD004	638	640	1/2 Core HQ	2	1.92
GHD004	640	642	1/2 Core HQ	2	2.2
GHD004	642	644	1/2 Core HQ	2	1.87
GHD004	644	646	1/2 Core HQ	2	0.65
GHD004	646	648	1/2 Core HQ	2	1.12
GHD004	648	650	1/2 Core HQ	2	2.03
GHD004	650	652	1/2 Core HQ	2	0.71
GHD004	652	654	1/2 Core HQ	2	0.81
GHD004	654	656	1/2 Core HQ	2	0.75
GHD004	656	658	1/2 Core HQ	2	0.65
GHD004	658	660	1/2 Core HQ	2	0.8
GHD004	660	662	1/2 Core HQ	2	0.99
GHD004	662	664	1/2 Core HQ	2	1.18
GHD004	664	666	1/2 Core HQ	2	1.31
GHD004	666	668	1/2 Core HQ	2	1.01
GHD004	668	670	1/2 Core HQ	2	0.79
GHD004	670	672	1/2 Core HQ	2	1.23
GHD004	672	674	1/2 Core HQ	2	0.74
GHD004	674	676	1/2 Core HQ	2	0.89
GHD004	676	678	1/2 Core HQ	2	0.86
GHD004	678	680	1/2 Core HQ	2	1.33
GHD004	680	682	1/2 Core HQ	2	0.95
GHD004	682	684	1/2 Core HQ	2	0.45
GHD004	684	686	1/2 Core HQ	2	0.64
GHD004	686	688	1/2 Core HQ	2	0.79
GHD004	688	690	1/2 Core HQ	2	1.38
GHD004	690	692	1/2 Core HQ	2	1.72
GHD004	692	694	1/2 Core HQ	2	1.16
GHD004	694	696	1/2 Core HQ	2	1.07
GHD004	696	698	1/2 Core HQ	2	0.98
GHD004	698	700	1/2 Core HQ	2	0.43
GHD004	700	702	1/2 Core HQ	2	0.78
GHD004	702	704	1/2 Core HQ	2	0.85
GHD004	704	706	1/2 Core HQ	2	0.64
GHD004	706	708	1/2 Core HQ	2	0.86
GHD004	708	710	1/2 Core HQ	2	0.58
GHD004	710	712	1/2 Core HQ	2	0.52

Hole ID	From (m)	To (m)	Sample Type	Interval (m)	Au (ppm)
GHD004	712	714	1/2 Core HQ	2	0.58
GHD004	714	716	1/2 Core HQ	2	0.59
GHD004	716	718	1/2 Core HQ	2	0.59
GHD004	718	720	1/2 Core HQ	2	0.88
GHD004	720	722	1/2 Core HQ	2	0.88
GHD004	722	724	1/2 Core HQ	2	0.86
GHD004	724	726	1/2 Core HQ	2	0.62
GHD004	726	728	1/2 Core HQ	2	0.68
GHD004	728	730	1/2 Core HQ	2	0.55
GHD004	730	732	1/2 Core HQ	2	0.61
GHD004	732	734	1/2 Core HQ	2	0.78
GHD004	734	736	1/2 Core HQ	2	0.72
GHD004	736	738	1/2 Core HQ	2	0.69
GHD004	738	740	1/2 Core HQ	2	0.56
GHD004	740	742	1/2 Core HQ	2	0.63
GHD004	742	744	1/2 Core HQ	2	0.51
GHD004	744	746	1/2 Core HQ	2	1.37
GHD004	746	748	1/2 Core HQ	2	1.07
GHD004	748	750	1/2 Core HQ	2	1.01
GHD004	750	752	1/2 Core HQ	2	0.52
GHD004	752	754	1/2 Core HQ	2	1.12
GHD004	754	756	1/2 Core HQ	2	0.88
GHD004	756	758	1/2 Core HQ	2	0.65
GHD004	758	760	1/2 Core HQ	2	0.49
GHD004	760	762	1/2 Core HQ	2	0.53
GHD004	762	764	1/2 Core HQ	2	0.62
GHD004	764	766	1/2 Core HQ	2	0.72
GHD004	766	768	1/2 Core HQ	2	1.65
GHD004	768	770	1/2 Core HQ	2	1.34
GHD004	770	772	1/2 Core HQ	2	0.61
GHD004	772	774	1/2 Core HQ	2	0.62
GHD004	774	776	1/2 Core HQ	2	2.8
GHD004	776	778	1/2 Core HQ	2	1.32
GHD004	778	780	1/2 Core HQ	2	0.76
GHD004	780	782	1/2 Core HQ	2	0.9
GHD004	782	784	1/2 Core HQ	2	1.57
GHD004	784	786	1/2 Core HQ	2	2.01
GHD004	786	788	1/2 Core HQ	2	1.17
GHD004	788	790	1/2 Core HQ	2	1.17
GHD004	790	792	1/2 Core HQ	2	0.93
GHD004	792	794	1/2 Core HQ	2	1.14
GHD004	794	796	1/2 Core HQ	2	1.26
GHD004	796	798	1/2 Core HQ	2	2.12
GHD004	798	800	1/2 Core HQ	2	1.41
GHD004	800	802	1/2 Core HQ	2	1.4



Hole ID	From (m)	To (m)	Sample Type	Interval (m)	Au (ppm)
GHD004	802	804	1/2 Core HQ	2	1.55
GHD004	804	806	1/2 Core HQ	2	1.35
GHD004	806	808	1/2 Core HQ	2	0.67
GHD004	808	810	1/2 Core HQ	2	1.75
GHD004	810	812	1/2 Core HQ	2	0.88
GHD004	812	814	1/2 Core HQ	2	0.71
GHD004	814	816	1/2 Core HQ	2	0.71
GHD004	816	818	1/2 Core HQ	2	1.35
GHD004	818	820	1/2 Core HQ	2	1.62
GHD004	820	822	1/2 Core HQ	2	0.73
GHD004	822	824	1/2 Core HQ	2	1.09
GHD004	824	826	1/2 Core HQ	2	0.87
GHD004	826	828	1/2 Core HQ	2	1.74
GHD004	828	830	1/2 Core HQ	2	1.31
GHD004	830	832	1/2 Core HQ	2	3.64
GHD004	832	834	1/2 Core HQ	2	0.28
GHD004	834	836	1/2 Core HQ	2	1.57
GHD004	836	838	1/2 Core HQ	2	2.04
GHD004	838	840	1/2 Core HQ	2	1.1
GHD004	840	842	1/2 Core HQ	2	0.79
GHD004	842	844	1/2 Core HQ	2	0.78
GHD004	844	846	1/2 Core HQ	2	0.67
GHD004	846	848	1/2 Core HQ	2	0.54
GHD004	848	850	1/2 Core HQ	2	1.9
GHD004	850	852	1/2 Core HQ	2	0.52
GHD004	852	854	1/2 Core HQ	2	0.56
GHD004	854	856	1/2 Core HQ	2	0.37
GHD004	856	858	1/2 Core HQ	2	0.59
GHD004	858	860	1/2 Core HQ	2	0.2
GHD004	860	862	1/2 Core HQ	2	0.53
GHD004	862	864	1/2 Core HQ	2	0.74
GHD004	864	866	1/2 Core HQ	2	0.39
GHD004	866	868	1/2 Core HQ	2	0.24
GHD004	868	870	1/2 Core HQ	2	0.6
GHD004	870	872	1/2 Core HQ	2	1.04
GHD004	872	874	1/2 Core HQ	2	0.93
GHD004	874	876	1/2 Core HQ	2	0.17
GHD004	876	878	1/2 Core HQ	2	0.12
GHD004	878	880	1/2 Core HQ	2	0.31
GHD004	880	882	1/2 Core HQ	2	0.43
GHD004	882	884	1/2 Core HQ	2	0.45
GHD004	884	886	1/2 Core HQ	2	0.28
GHD004	886	888	1/2 Core HQ	2	0.91
GHD004	888	890	1/2 Core HQ	2	0.67

Hole ID	From (m)	To (m)	Sample Type	Interval (m)	Au (ppm)
GHD004	890	892	1/2 Core HQ	2	0.75
GHD004	892	894	1/2 Core HQ	2	0.45
GHD004	894	896	1/2 Core HQ	2	0.33
GHD004	896	898	1/2 Core HQ	2	0.06
GHD004	898	900	1/2 Core HQ	2	0.26
GHD004	900	902	1/2 Core HQ	2	0.32
GHD004	902	904	1/2 Core HQ	2	0.38
GHD004	904	906	1/2 Core HQ	2	0.25
GHD004	906	908	1/2 Core HQ	2	0.29
GHD004	908	910	1/2 Core HQ	2	1.13
GHD004	910	912	1/2 Core HQ	2	0.2
GHD004	912	914	1/2 Core HQ	2	0.59
GHD004	914	916	1/2 Core HQ	2	1.19
GHD004	916	918	1/2 Core HQ	2	0.36
GHD004	918	920	1/2 Core HQ	2	0.35
GHD004	920	922	1/2 Core HQ	2	0.18
GHD004	922	924	1/2 Core HQ	2	0.39
GHD004	924	926	1/2 Core HQ	2	0.13
GHD004	926	928	1/2 Core HQ	2	0.16
GHD004	928	930	1/2 Core HQ	2	0.1
GHD004	930	932	1/2 Core HQ	2	0.45
GHD004	932	934	1/2 Core HQ	2	0.8
GHD004	934	936	1/2 Core HQ	2	0.04
GHD004	936	938	1/2 Core HQ	2	0.01
GHD004	938	940	1/2 Core HQ	2	0.22
GHD004	940	942	1/2 Core HQ	2	0.81
GHD004	942	944	1/2 Core HQ	2	0.03
GHD004	944	946	1/2 Core HQ	2	0.01
GHD004	946	948	1/2 Core HQ	2	0.03
GHD004	948	950	1/2 Core HQ	2	0.06
GHD004	950	952	1/2 Core HQ	2	0.3
GHD004	952	954	1/2 Core HQ	2	0.1
GHD004	954	956	1/2 Core HQ	2	0.13
GHD004	956	958	1/2 Core HQ	2	0.92
GHD004	958	960	1/2 Core HQ	2	0.04
GHD004	960	962	1/2 Core HQ	2	0.01
GHD004	962	964	1/2 Core HQ	2	0
GHD004	964	966	1/2 Core HQ	2	0.02
GHD004	966	968	1/2 Core HQ	2	0.01
GHD004	968	970	1/2 Core HQ	2	0
GHD004	970	972	1/2 Core HQ	2	0.12
GHD004	972	974	1/2 Core HQ	2	0.06
GHD004	974	976	1/2 Core HQ	2	0
GHD004	976	978	1/2 Core HQ	2	0.11
GHD004	978	980	1/2 Core HQ	2	0.14



Hole ID	From (m)	To (m)	Sample Type	Interval (m)	Au (ppm)
GHD004	980	982	1/2 Core HQ	2	0.61
GHD004	982	984	1/2 Core HQ	2	0.15
GHD004	984	986	1/2 Core HQ	2	0.05
GHD004	986	988	1/2 Core HQ	2	0.29
GHD004	988	990	1/2 Core HQ	2	0.11
GHD004	990	992	1/2 Core HQ	2	0.07
GHD004	992	994	1/2 Core HQ	2	0.06
GHD004	994	996	1/2 Core HQ	2	0.08
GHD004	996	998	1/2 Core HQ	2	0.03
GHD004	998	1000	1/2 Core HQ	2	0.02
GHD004	1000	1002	1/2 Core HQ	2	0.01
GHD004	1002	1004	1/2 Core HQ	2	0.06
GHD004	1004	1006	1/2 Core HQ	2	0.06
GHD004	1006	1008	1/2 Core HQ	2	0.11
GHD004	1008	1010	1/2 Core HQ	2	0.05
GHD004	1010	1012	1/2 Core HQ	2	0.03
GHD004	1012	1014	1/2 Core HQ	2	0.07
GHD004	1014	1016	1/2 Core HQ	2	0.04
GHD004	1016	1018	1/2 Core HQ	2	0.2
GHD004	1018	1020	1/2 Core HQ	2	0.05
GHD004	1020	1022	1/2 Core HQ	2	0.06
GHD004	1022	1024	1/2 Core HQ	2	0.24
GHD004	1024	1026	1/2 Core HQ	2	0.01
GHD004	1026	1028	1/2 Core HQ	2	0.1
GHD004	1028	1030.1	1/2 Core HQ	2.1	0.05
GHD005	0	2	1/2 Core HQ	2	0.42
GHD005	2	4	1/2 Core HQ	2	0.76
GHD005	4	6	1/2 Core HQ	2	0.74
GHD005	6	8	1/2 Core HQ	2	0.28
GHD005	8	10	1/2 Core HQ	2	1.06
GHD005	10	12	1/2 Core HQ	2	0.5
GHD005	12	14	1/2 Core HQ	2	1.32
GHD005	14	16	1/2 Core HQ	2	1.5
GHD005	16	18	1/2 Core HQ	2	1.55
GHD005	18	20	1/2 Core HQ	2	0.99
GHD005	20	22	1/2 Core HQ	2	1.32
GHD005	22	24	1/2 Core HQ	2	1.38
GHD005	24	26	1/2 Core HQ	2	1.22
GHD005	26	28	1/2 Core HQ	2	1.17
GHD005	28	30	1/2 Core HQ	2	1.13
GHD005	30	32	1/2 Core HQ	2	0.87
GHD005	32	34	1/2 Core HQ	2	1.66
GHD005	34	36	1/2 Core HQ	2	1.61
GHD005	36	38	1/2 Core HQ	2	1.41

Hole ID	From (m)	To (m)	Sample Type	Interval (m)	Au (ppm)
GHD005	38	40	1/2 Core HQ	2	1.2
GHD005	40	42	1/2 Core HQ	2	0.94
GHD005	42	44	1/2 Core HQ	2	0.71
GHD005	44	46	1/2 Core HQ	2	1.09
GHD005	46	48	1/2 Core HQ	2	1.02
GHD005	48	50	1/2 Core HQ	2	5.97
GHD005	50	52	1/2 Core HQ	2	1.21
GHD005	52	54	1/2 Core HQ	2	1.67
GHD005	54	56	1/2 Core HQ	2	2.16
GHD005	56	58	1/2 Core HQ	2	1.98
GHD005	58	60	1/2 Core HQ	2	1.07
GHD005	60	62	1/2 Core HQ	2	1.8
GHD005	62	64	1/2 Core HQ	2	1.44
GHD005	64	66	1/2 Core HQ	2	1.22
GHD005	66	68	1/2 Core HQ	2	1.3
GHD005	68	70	1/2 Core HQ	2	1.3
GHD005	70	72	1/2 Core HQ	2	1.41
GHD005	72	74	1/2 Core HQ	2	1.36
GHD005	74	76	1/2 Core HQ	2	1.04
GHD005	76	78	1/2 Core HQ	2	2.19
GHD005	78	80	1/2 Core HQ	2	1.33
GHD005	80	82	1/2 Core HQ	2	1.58
GHD005	82	84	1/2 Core HQ	2	1.28
GHD005	84	86	1/2 Core HQ	2	1.48
GHD005	86	88	1/2 Core HQ	2	2.62
GHD005	88	90	1/2 Core HQ	2	1.76
GHD005	90	92	1/2 Core HQ	2	1.39
GHD005	92	94	1/2 Core HQ	2	1.67
GHD005	94	96	1/2 Core HQ	2	1.62
GHD005	96	98	1/2 Core HQ	2	1.49
GHD005	98	100	1/2 Core HQ	2	0.69
GHD005	100	102	1/2 Core HQ	2	0.14
GHD005	102	104	1/2 Core HQ	2	0.03
GHD005	104	106	1/2 Core HQ	2	0.05
GHD005	106	108	1/2 Core HQ	2	0
GHD005	108	110	1/2 Core HQ	2	0.03
GHD005	110	112	1/2 Core HQ	2	0.26
GHD005	112	114	1/2 Core HQ	2	0.23
GHD005	114	116	1/2 Core HQ	2	1.08
GHD005	116	118	1/2 Core HQ	2	0.27
GHD005	118	120	1/2 Core HQ	2	0.41
GHD005	120	122	1/2 Core HQ	2	0.07
GHD005	122	124	1/2 Core HQ	2	0.1
GHD005	124	126	1/2 Core HQ	2	0.01
GHD005	126	128	1/2 Core HQ	2	0.1



Hole ID	From (m)	To (m)	Sample Type	Interval (m)	Au (ppm)
GHD005	128	130	1/2 Core HQ	2	0
GHD005	130	132	1/2 Core HQ	2	0.18
GHD005	132	134	1/2 Core HQ	2	0.27
GHD005	134	136	1/2 Core HQ	2	0.13
GHD005	136	138	1/2 Core HQ	2	0.08
GHD005	138	140	1/2 Core HQ	2	0.01
GHD005	140	142	1/2 Core HQ	2	0.04
GHD005	142	144	1/2 Core HQ	2	0.08
GHD005	144	146	1/2 Core HQ	2	0.01
GHD005	146	148	1/2 Core HQ	2	0.05
GHD005	148	150	1/2 Core HQ	2	0.01
GHD005	150	152	1/2 Core HQ	2	0.41
GHD005	152	154	1/2 Core HQ	2	0.01
GHD005	154	156	1/2 Core HQ	2	0.01
GHD005	156	158	1/2 Core HQ	2	0.02
GHD005	158	160	1/2 Core HQ	2	0.05
GHD005	160	162	1/2 Core HQ	2	0.4
GHD005	162	164	1/2 Core HQ	2	0.26
GHD005	164	166	1/2 Core HQ	2	0
GHD005	166	168	1/2 Core HQ	2	0.07
GHD005	168	170	1/2 Core HQ	2	0.09
GHD005	170	172	1/2 Core HQ	2	0.01
GHD005	172	174	1/2 Core HQ	2	0.07
GHD005	174	176	1/2 Core HQ	2	0.15
GHD005	176	178	1/2 Core HQ	2	0.48
GHD005	178	180	1/2 Core HQ	2	0.05
GHD005	180	182	1/2 Core HQ	2	0.08
GHD005	182	184	1/2 Core HQ	2	0.54
GHD005	184	186	1/2 Core HQ	2	0.01
GHD005	186	188	1/2 Core HQ	2	0.26
GHD005	188	190	1/2 Core HQ	2	0.04
GHD005	190	192	1/2 Core HQ	2	0.08
GHD005	192	194	1/2 Core HQ	2	0.13
GHD005	194	196	1/2 Core HQ	2	0.04
GHD005	196	198	1/2 Core HQ	2	0
GHD005	198	200	1/2 Core HQ	2	0.04
GHD005	200	202	1/2 Core HQ	2	0.35
GHD005	202	204	1/2 Core HQ	2	0.08
GHD005	204	206	1/2 Core HQ	2	0.03
GHD005	206	208	1/2 Core HQ	2	0.15
GHD005	208	210	1/2 Core HQ	2	0.41
GHD005	210	212	1/2 Core HQ	2	0.19
GHD005	212	214	1/2 Core HQ	2	0.1
GHD005	214	216	1/2 Core HQ	2	0.02

Hole ID	From (m)	To (m)	Sample Type	Interval (m)	Au (ppm)
GHD005	216	218	1/2 Core HQ	2	0.27
GHD005	218	220	1/2 Core HQ	2	0.14
GHD006	0	2	1/2 Core HQ	2	1.83
GHD006	2	4	1/2 Core HQ	2	2.14
GHD006	4	6	1/2 Core HQ	2	2.06
GHD006	6	8	1/2 Core HQ	2	1.8
GHD006	8	10	1/2 Core HQ	2	1.5
GHD006	10	12	1/2 Core HQ	2	1.12
GHD006	12	14	1/2 Core HQ	2	1.54
GHD006	14	16	1/2 Core HQ	2	1.09
GHD006	16	18	1/2 Core HQ	2	0.92
GHD006	18	20	1/2 Core HQ	2	1.19
GHD006	20	22	1/2 Core HQ	2	1.55
GHD006	22	24	1/2 Core HQ	2	1.45
GHD006	24	26	1/2 Core HQ	2	1.06
GHD006	26	28	1/2 Core HQ	2	1.88
GHD006	28	30	1/2 Core HQ	2	1.67
GHD006	30	32	1/2 Core HQ	2	1.22
GHD006	32	34	1/2 Core HQ	2	0.65
GHD006	34	36	1/2 Core HQ	2	0.16
GHD006	36	38	1/2 Core HQ	2	0.43
GHD006	38	40	1/2 Core HQ	2	0.49
GHD006	40	42	1/2 Core HQ	2	0.45
GHD006	42	44	1/2 Core HQ	2	0.32
GHD006	44	46	1/2 Core HQ	2	0.43
GHD006	46	48	1/2 Core HQ	2	0.3
GHD006	48	50	1/2 Core HQ	2	0.46
GHD006	50	52	1/2 Core HQ	2	0.95
GHD006	52	54	1/2 Core HQ	2	1.3
GHD006	54	56	1/2 Core HQ	2	1.29
GHD006	56	58	1/2 Core HQ	2	1.57
GHD006	58	60	1/2 Core HQ	2	1.34
GHD006	60	62	1/2 Core HQ	2	0.58
GHD006	62	64	1/2 Core HQ	2	0.99
GHD006	64	66	1/2 Core HQ	2	0.71
GHD006	66	68	1/2 Core HQ	2	0.78
GHD006	68	70	1/2 Core HQ	2	0.58
GHD006	70	72	1/2 Core HQ	2	0.67
GHD006	72	74	1/2 Core HQ	2	0.48
GHD006	74	76	1/2 Core HQ	2	0.73
GHD006	76	78	1/2 Core HQ	2	1.41
GHD006	78	80	1/2 Core HQ	2	1.72
GHD006	80	82	1/2 Core HQ	2	1.91
GHD006	82	84	1/2 Core HQ	2	1.76
GHD006	84	86	1/2 Core HQ	2	1.58



Hole ID	From (m)	To (m)	Sample Type	Interval (m)	Au (ppm)
GHD006	86	88	1/2 Core HQ	2	1.72
GHD006	88	90	1/2 Core HQ	2	1.74
GHD006	90	92	1/2 Core HQ	2	1.43
GHD006	92	94	1/2 Core HQ	2	0.89
GHD006	94	96	1/2 Core HQ	2	0.94
GHD006	96	98	1/2 Core HQ	2	1.51
GHD006	98	100	1/2 Core HQ	2	1.35
GHD006	100	102	1/2 Core HQ	2	1.54
GHD006	102	104	1/2 Core HQ	2	1.86
GHD006	104	106	1/2 Core HQ	2	0.64
GHD006	106	108	1/2 Core HQ	2	0.18
GHD006	108	110	1/2 Core HQ	2	0.35
GHD006	110	112	1/2 Core HQ	2	0.94
GHD006	112	114	1/2 Core HQ	2	1.39
GHD006	114	116	1/2 Core HQ	2	0.16
GHD006	116	118	1/2 Core HQ	2	0.88
GHD006	118	120	1/2 Core HQ	2	0.96
GHD006	120	122	1/2 Core HQ	2	1.38
GHD006	122	124	1/2 Core HQ	2	0.97
GHD006	124	126	1/2 Core HQ	2	1.11
GHD006	126	128	1/2 Core HQ	2	1.43
GHD006	128	130	1/2 Core HQ	2	5.03
GHD006	130	132	1/2 Core HQ	2	0.46
GHD006	132	134	1/2 Core HQ	2	3.24
GHD006	134	136	1/2 Core HQ	2	1.17
GHD006	136	138	1/2 Core HQ	2	1.17
GHD006	138	140	1/2 Core HQ	2	5.48
GHD006	140	142	1/2 Core HQ	2	0.56
GHD006	142	144	1/2 Core HQ	2	1.16
GHD006	144	146	1/2 Core HQ	2	1.54
GHD006	146	148	1/2 Core HQ	2	1.16
GHD006	148	150	1/2 Core HQ	2	0.91
GHD006	150	152	1/2 Core HQ	2	0.69
GHD006	152	154	1/2 Core HQ	2	1.55
GHD006	154	156	1/2 Core HQ	2	0.68
GHD006	156	158	1/2 Core HQ	2	1.11
GHD006	158	160	1/2 Core HQ	2	1.23
GHD006	160	162	1/2 Core HQ	2	0.63
GHD006	162	164	1/2 Core HQ	2	1.13
GHD006	164	166	1/2 Core HQ	2	0.48
GHD006	166	168	1/2 Core HQ	2	0.96
GHD006	168	170	1/2 Core HQ	2	0.96
GHD006	170	172	1/2 Core HQ	2	0.97
GHD006	172	174	1/2 Core HQ	2	0.6

Hole ID	From (m)	To (m)	Sample Type	Interval (m)	Au (ppm)
GHD006	174	176	1/2 Core HQ	2	1.1
GHD006	176	178	1/2 Core HQ	2	0.34
GHD006	178	180	1/2 Core HQ	2	1.11
GHD006	180	182	1/2 Core HQ	2	0.71
GHD006	182	184	1/2 Core HQ	2	0.8
GHD006	184	186	1/2 Core HQ	2	0.86
GHD006	186	188	1/2 Core HQ	2	0.88
GHD006	188	190	1/2 Core HQ	2	0.48
GHD006	190	192	1/2 Core HQ	2	0.64
GHD006	192	194	1/2 Core HQ	2	0.5
GHD006	194	196	1/2 Core HQ	2	0.98
GHD006	196	198	1/2 Core HQ	2	0.32
GHD006	198	200	1/2 Core HQ	2	0.76
GHD006	200	202	1/2 Core HQ	2	0.63
GHD006	202	204	1/2 Core HQ	2	0.8
GHD006	204	206	1/2 Core HQ	2	0.34
GHD006	206	208	1/2 Core HQ	2	0.18
GHD006	208	210	1/2 Core HQ	2	0.36
GHD006	210	212	1/2 Core HQ	2	0.18
GHD006	212	214	1/2 Core HQ	2	0.11
GHD006	214	216	1/2 Core HQ	2	0.92
GHD006	216	218	1/2 Core HQ	2	1.45
GHD006	218	220	1/2 Core HQ	2	1.74
GHD006	220	222	1/2 Core HQ	2	1.28
GHD006	222	224	1/2 Core HQ	2	1.52
GHD006	224	226	1/2 Core HQ	2	1.06
GHD006	226	228	1/2 Core HQ	2	1.42
GHD006	228	230	1/2 Core HQ	2	1.24
GHD006	230	232	1/2 Core HQ	2	0.39
GHD006	232	234	1/2 Core HQ	2	0.55
GHD006	234	236	1/2 Core HQ	2	0.43
GHD006	236	238	1/2 Core HQ	2	0.87
GHD006	238	240	1/2 Core HQ	2	2.39
GHD006	240	242	1/2 Core HQ	2	1.51
GHD006	242	244	1/2 Core HQ	2	1.85
GHD006	244	246	1/2 Core HQ	2	1.35
GHD006	246	248	1/2 Core HQ	2	1.12
GHD006	248	250	1/2 Core HQ	2	0.46
GHD006	250	252	1/2 Core HQ	2	1.13
GHD006	252	254	1/2 Core HQ	2	0.71
GHD006	254	256	1/2 Core HQ	2	1.17
GHD006	256	258	1/2 Core HQ	2	1.61
GHD006	258	260	1/2 Core HQ	2	1.05
GHD006	260	262	1/2 Core HQ	2	1.77
GHD006	262	264	1/2 Core HQ	2	2.21



Hole ID	From (m)	To (m)	Sample Type	Interval (m)	Au (ppm)
GHD006	264	266	1/2 Core HQ	2	0.87
GHD006	266	268	1/2 Core HQ	2	0.32
GHD006	268	270	1/2 Core HQ	2	1.19
GHD006	270	272	1/2 Core HQ	2	1.49
GHD006	272	274	1/2 Core HQ	2	1.22
GHD006	274	276	1/2 Core HQ	2	0.58
GHD006	276	278	1/2 Core HQ	2	1.52
GHD006	278	280	1/2 Core HQ	2	1.32
GHD006	280	282	1/2 Core HQ	2	2.02
GHD006	282	284	1/2 Core HQ	2	1.29
GHD006	284	286	1/2 Core HQ	2	1.45
GHD006	286	288	1/2 Core HQ	2	1.05
GHD006	288	290	1/2 Core HQ	2	1.25
GHD006	290	292	1/2 Core HQ	2	1.52
GHD006	292	294	1/2 Core HQ	2	1.23
GHD006	294	296	1/2 Core HQ	2	0.99
GHD006	296	298	1/2 Core HQ	2	1.28
GHD006	298	300	1/2 Core HQ	2	0.56
GHD006	300	302	1/2 Core HQ	2	1.26
GHD006	302	304	1/2 Core HQ	2	0.76
GHD006	304	306	1/2 Core HQ	2	2.08
GHD006	306	308	1/2 Core HQ	2	1.56
GHD006	308	310	1/2 Core HQ	2	0.99
GHD006	310	312	1/2 Core HQ	2	0.46
GHD006	312	314	1/2 Core HQ	2	1.28
GHD006	314	316	1/2 Core HQ	2	0.67
GHD006	316	318	1/2 Core HQ	2	0.94
GHD006	318	320	1/2 Core HQ	2	0.61
GHD006	320	322	1/2 Core HQ	2	1.5
GHD006	322	324	1/2 Core HQ	2	1.36
GHD006	324	326	1/2 Core HQ	2	0.57
GHD006	326	328	1/2 Core HQ	2	1.16
GHD006	328	330	1/2 Core HQ	2	0.61
GHD006	330	332	1/2 Core HQ	2	1.14
GHD006	332	334	1/2 Core HQ	2	1.01
GHD006	334	336	1/2 Core HQ	2	1.53
GHD006	336	338	1/2 Core HQ	2	1.15
GHD006	338	340	1/2 Core HQ	2	1.01
GHD006	340	342	1/2 Core HQ	2	1.21
GHD006	342	344	1/2 Core HQ	2	1.55
GHD006	344	346	1/2 Core HQ	2	2.35
GHD006	346	348	1/2 Core HQ	2	1.02
GHD006	348	350	1/2 Core HQ	2	0.43
GHD006	350	352	1/2 Core HQ	2	0.92

Hole ID	From (m)	To (m)	Sample Type	Interval (m)	Au (ppm)
GHD006	352	354	1/2 Core HQ	2	0.5
GHD006	354	356	1/2 Core HQ	2	0.46
GHD006	356	358	1/2 Core HQ	2	0.44
GHD006	358	360	1/2 Core HQ	2	0.97
GHD006	360	362	1/2 Core HQ	2	1.12
GHD006	362	364	1/2 Core HQ	2	0.61
GHD006	364	366	1/2 Core HQ	2	0.95
GHD006	366	368	1/2 Core HQ	2	0.78
GHD006	368	370	1/2 Core HQ	2	0.93
GHD006	370	372	1/2 Core HQ	2	0.78
GHD006	372	374	1/2 Core HQ	2	0.81
GHD006	374	376	1/2 Core HQ	2	0.72
GHD006	376	378	1/2 Core HQ	2	0.26
GHD006	378	380	1/2 Core HQ	2	0.27
GHD006	380	382	1/2 Core HQ	2	0.43
GHD006	382	384	1/2 Core HQ	2	0.37
GHD006	384	386	1/2 Core HQ	2	0.51
GHD006	386	388	1/2 Core HQ	2	1.04
GHD006	388	390	1/2 Core HQ	2	0.23
GHD006	390	392	1/2 Core HQ	2	1.08
GHD006	392	394	1/2 Core HQ	2	2.14
GHD006	394	396	1/2 Core HQ	2	0.42
GHD006	396	398	1/2 Core HQ	2	0.3
GHD006	398	400	1/2 Core HQ	2	0.59
GHD006	400	402	1/2 Core HQ	2	2.82
GHD006	402	404	1/2 Core HQ	2	2.09
GHD006	404	406	1/2 Core HQ	2	2.92
GHD006	406	408	1/2 Core HQ	2	2.3
GHD006	408	410	1/2 Core HQ	2	2.18
GHD006	410	412	1/2 Core HQ	2	2.55
GHD006	412	414	1/2 Core HQ	2	2.59
GHD006	414	416	1/2 Core HQ	2	2.97
GHD006	416	418	1/2 Core HQ	2	3.13
GHD006	418	420	1/2 Core HQ	2	1.62
GHD006	420	422	1/2 Core HQ	2	0.32
GHD006	422	424	1/2 Core HQ	2	1.02
GHD006	424	426	1/2 Core HQ	2	1.14
GHD006	426	428	1/2 Core HQ	2	0.63
GHD006	428	430	1/2 Core HQ	2	0.91
GHD006	430	432	1/2 Core HQ	2	1.75
GHD006	432	434	1/2 Core HQ	2	3.25
GHD006	434	436	1/2 Core HQ	2	1.47
GHD006	436	438	1/2 Core HQ	2	2.02
GHD006	438	440	1/2 Core HQ	2	1.23
GHD006	440	442	1/2 Core HQ	2	1.88



Hole ID	From (m)	To (m)	Sample Type	Interval (m)	Au (ppm)
GHD006	442	444	1/2 Core HQ	2	1.63
GHD006	444	446	1/2 Core HQ	2	1.97
GHD006	446	448	1/2 Core HQ	2	2.57
GHD006	448	450	1/2 Core HQ	2	2.66
GHD006	450	452	1/2 Core HQ	2	2.49
GHD006	452	454	1/2 Core HQ	2	2.89
GHD006	454	456	1/2 Core HQ	2	1.67
GHD006	456	458	1/2 Core HQ	2	1.62
GHD006	458	460	1/2 Core HQ	2	0.75
GHD006	460	462	1/2 Core HQ	2	2.6
GHD006	462	464	1/2 Core HQ	2	1.62
GHD006	464	466	1/2 Core HQ	2	1.92
GHD006	466	468	1/2 Core HQ	2	2.76
GHD006	468	470	1/2 Core HQ	2	1.76
GHD006	470	472	1/2 Core HQ	2	1.78
GHD006	472	474	1/2 Core HQ	2	1.33
GHD006	474	476	1/2 Core HQ	2	1.69
GHD006	476	478	1/2 Core HQ	2	0.79
GHD006	478	480	1/2 Core HQ	2	1.44
GHD006	480	482	1/2 Core HQ	2	0.85
GHD006	482	484	1/2 Core HQ	2	2.72
GHD006	484	486	1/2 Core HQ	2	1.96
GHD006	486	488	1/2 Core HQ	2	2.16
GHD006	488	490	1/2 Core HQ	2	1.59
GHD006	490	492	1/2 Core HQ	2	2.26
GHD006	492	494	1/2 Core HQ	2	1.3
GHD006	494	496	1/2 Core HQ	2	1.79
GHD006	496	498	1/2 Core HQ	2	3.89
GHD006	498	500	1/2 Core HQ	2	1.9
GHD006	500	502	1/2 Core HQ	2	1.64
GHD006	502	504	1/2 Core HQ	2	2.83
GHD006	504	506	1/2 Core HQ	2	1.56
GHD006	506	508	1/2 Core HQ	2	1.71
GHD006	508	510	1/2 Core HQ	2	1.86
GHD006	510	512	1/2 Core HQ	2	1.2
GHD006	512	514	1/2 Core HQ	2	1.68
GHD006	514	516	1/2 Core HQ	2	1.79
GHD006	516	518	1/2 Core HQ	2	2.97
GHD006	518	520	1/2 Core HQ	2	2.67
GHD006	520	522	1/2 Core HQ	2	2.31
GHD006	522	524	1/2 Core HQ	2	2.35
GHD006	524	526	1/2 Core HQ	2	3.07
GHD006	526	528	1/2 Core HQ	2	1.78
GHD006	528	530	1/2 Core HQ	2	2.34

Hole ID	From (m)	To (m)	Sample Type	Interval (m)	Au (ppm)
GHD006	530	532	1/2 Core HQ	2	2.83
GHD006	532	534	1/2 Core HQ	2	0.69
GHD006	534	536	1/2 Core HQ	2	3.63
GHD006	536	538	1/2 Core HQ	2	3.17
GHD006	538	540	1/2 Core HQ	2	3.67
GHD006	540	542	1/2 Core HQ	2	2.26
GHD006	542	544	1/2 Core HQ	2	2.8
GHD006	544	546	1/2 Core HQ	2	1.97
GHD006	546	548	1/2 Core HQ	2	1.04
GHD006	548	550	1/2 Core HQ	2	0.78
GHD006	550	552	1/2 Core HQ	2	0.49
GHD006	552	554	1/2 Core HQ	2	0.84
GHD006	554	556	1/2 Core HQ	2	1.78
GHD006	556	558	1/2 Core HQ	2	2.85
GHD006	558	560	1/2 Core HQ	2	1.12
GHD006	560	562	1/2 Core HQ	2	1.27
GHD006	562	564	1/2 Core HQ	2	1.81
GHD006	564	566	1/2 Core HQ	2	2.33
GHD006	566	568	1/2 Core HQ	2	0.82
GHD006	568	570	1/2 Core HQ	2	1.31
GHD006	570	572	1/2 Core HQ	2	1.64
GHD006	572	574	1/2 Core HQ	2	1.41
GHD006	574	576	1/2 Core HQ	2	2.13
GHD006	576	578	1/2 Core HQ	2	3.48
GHD006	578	580	1/2 Core HQ	2	1.15
GHD006	580	582	1/2 Core HQ	2	1.79
GHD006	582	584	1/2 Core HQ	2	1.55
GHD006	584	586	1/2 Core HQ	2	1.29
GHD006	586	588	1/2 Core HQ	2	1.38
GHD006	588	590	1/2 Core HQ	2	1.42
GHD006	590	592	1/2 Core HQ	2	1.29
GHD006	592	594	1/2 Core HQ	2	1.29
GHD006	594	596	1/2 Core HQ	2	1.52
GHD006	596	598	1/2 Core HQ	2	1.25
GHD006	598	600	1/2 Core HQ	2	1.11
GHD006	600	602	1/2 Core HQ	2	1.63
GHD006	602	604	1/2 Core HQ	2	2.16
GHD006	604	606	1/2 Core HQ	2	1.39
GHD006	606	608	1/2 Core HQ	2	2.13
GHD006	608	610	1/2 Core HQ	2	1.97
GHD006	610	612	1/2 Core HQ	2	1.2
GHD006	612	614	1/2 Core HQ	2	1.1
GHD006	614	616	1/2 Core HQ	2	0.97
GHD006	616	618	1/2 Core HQ	2	1.93
GHD006	618	620	1/2 Core HQ	2	1.3



Hole ID	From (m)	To (m)	Sample Type	Interval (m)	Au (ppm)
GHD006	620	622	1/2 Core HQ	2	1.2
GHD006	622	624	1/2 Core HQ	2	0.7
GHD006	624	626	1/2 Core HQ	2	0.8
GHD006	626	628	1/2 Core HQ	2	0.68
GHD006	628	630	1/2 Core HQ	2	0.74
GHD006	630	632	1/2 Core HQ	2	0.77
GHD006	632	634	1/2 Core HQ	2	0.81
GHD006	634	636	1/2 Core HQ	2	0.66
GHD006	636	638	1/2 Core HQ	2	0.87
GHD006	638	640	1/2 Core HQ	2	0.77
GHD006	640	642	1/2 Core HQ	2	1.22
GHD006	642	644	1/2 Core HQ	2	1.06
GHD006	644	646	1/2 Core HQ	2	1.42
GHD006	646	648	1/2 Core HQ	2	1.2
GHD006	648	650	1/2 Core HQ	2	3
GHD006	650	652	1/2 Core HQ	2	2.17
GHD006	652	654	1/2 Core HQ	2	1.15
GHD006	654	656	1/2 Core HQ	2	1.22
GHD006	656	658	1/2 Core HQ	2	1.38
GHD006	658	660	1/2 Core HQ	2	1.28
GHD006	660	662	1/2 Core HQ	2	2
GHD006	662	664	1/2 Core HQ	2	2.32
GHD006	664	666	1/2 Core HQ	2	2
GHD006	666	668	1/2 Core HQ	2	1.68
GHD006	668	670	1/2 Core HQ	2	1.2
GHD006	670	672	1/2 Core HQ	2	1.44
GHD006	672	674	1/2 Core HQ	2	0.96
GHD006	674	676	1/2 Core HQ	2	1.18
GHD006	676	678	1/2 Core HQ	2	2.27
GHD006	678	680	1/2 Core HQ	2	3.93
GHD006	680	682	1/2 Core HQ	2	1.5
GHD006	682	684	1/2 Core HQ	2	1.28
GHD006	684	686	1/2 Core HQ	2	1.11
GHD006	686	688	1/2 Core HQ	2	0.63
GHD006	688	690	1/2 Core HQ	2	0.25
GHD006	690	692	1/2 Core HQ	2	1.14
GHD006	692	694	1/2 Core HQ	2	0.51
GHD006	694	696	1/2 Core HQ	2	1.34
GHD006	696	698	1/2 Core HQ	2	0.87
GHD006	698	700	1/2 Core HQ	2	0.36
GHD006	700	702	1/2 Core HQ	2	0.58
GHD006	702	704	1/2 Core HQ	2	0.85
GHD006	704	706	1/2 Core HQ	2	0.13
GHD006	706	708	1/2 Core HQ	2	0.3

Hole ID	From (m)	To (m)	Sample Type	Interval (m)	Au (ppm)
GHD006	708	710	1/2 Core HQ	2	0.49
GHD006	710	712	1/2 Core HQ	2	0.21
GHD006	712	714	1/2 Core HQ	2	0.28
GHD006	714	716	1/2 Core HQ	2	0.53
GHD006	716	718	1/2 Core HQ	2	1.28
GHD006	718	720	1/2 Core HQ	2	0.38
GHD006	720	722	1/2 Core HQ	2	0.5
GHD006	722	724	1/2 Core HQ	2	1.19
GHD006	724	726	1/2 Core HQ	2	1.75
GHD006	726	728	1/2 Core HQ	2	1.25
GHD006	728	730	1/2 Core HQ	2	2.13
GHD006	730	732	1/2 Core HQ	2	0.41
GHD006	732	734	1/2 Core HQ	2	0.99
GHD006	734	736	1/2 Core HQ	2	0.71
GHD006	736	738	1/2 Core HQ	2	0.91
GHD006	738	740	1/2 Core HQ	2	0.98
GHD006	740	742	1/2 Core HQ	2	0.47
GHD006	742	744	1/2 Core HQ	2	0.72
GHD006	744	746	1/2 Core HQ	2	1.3
GHD006	746	748	1/2 Core HQ	2	1.8
GHD006	748	750	1/2 Core HQ	2	1.17
GHD006	750	752	1/2 Core HQ	2	0.49
GHD006	752	754	1/2 Core HQ	2	1.21
GHD006	754	756	1/2 Core HQ	2	0.85
GHD006	756	758	1/2 Core HQ	2	0.5
GHD006	758	760	1/2 Core HQ	2	0.47
GHD006	760	762	1/2 Core HQ	2	0.72
GHD006	762	764	1/2 Core HQ	2	0.62
GHD006	764	766	1/2 Core HQ	2	0.73
GHD006	766	768	1/2 Core HQ	2	0.8
GHD006	768	770	1/2 Core HQ	2	1.64
GHD006	770	772	1/2 Core HQ	2	1.41
GHD006	772	774	1/2 Core HQ	2	1.43
GHD006	774	776	1/2 Core HQ	2	1.67
GHD006	776	778	1/2 Core HQ	2	1.1
GHD006	778	780	1/2 Core HQ	2	1.18
GHD006	780	782	1/2 Core HQ	2	2.05
GHD006	782	784	1/2 Core HQ	2	1.21
GHD006	784	786	1/2 Core HQ	2	1.7
GHD006	786	788	1/2 Core HQ	2	1.25
GHD006	788	790	1/2 Core HQ	2	2.39
GHD006	790	792	1/2 Core HQ	2	1.97
GHD006	792	794	1/2 Core HQ	2	2.81
GHD006	794	796	1/2 Core HQ	2	2.1
GHD006	796	798	1/2 Core HQ	2	2.2



Hole ID	From (m)	To (m)	Sample Type	Interval (m)	Au (ppm)
GHD006	798	800	1/2 Core HQ	2	1.61
GHD006	800	802	1/2 Core HQ	2	2.46
GHD006	802	804	1/2 Core HQ	2	3.36
GHD006	804	806	1/2 Core HQ	2	2.01
GHD006	806	808	1/2 Core HQ	2	2.3
GHD006	808	810	1/2 Core HQ	2	0.94
GHD006	810	812	1/2 Core HQ	2	0.09
GHD006	812	814	1/2 Core HQ	2	0.35
GHD006	814	816	1/2 Core HQ	2	1.18
GHD006	816	818	1/2 Core HQ	2	0.97
GHD006	818	820	1/2 Core HQ	2	0.18
GHD006	820	822	1/2 Core HQ	2	0.26
GHD006	822	824	1/2 Core HQ	2	0.31
GHD006	824	826	1/2 Core HQ	2	0.56
GHD006	826	828	1/2 Core HQ	2	0.18
GHD006	828	830	1/2 Core HQ	2	0.08
GHD006	830	832	1/2 Core HQ	2	0.18
GHD006	832	834	1/2 Core HQ	2	0.61
GHD006	834	836	1/2 Core HQ	2	0.01
GHD006	836	838	1/2 Core HQ	2	<0.01
GHD006	838	840	1/2 Core HQ	2	0.03
GHD006	840	842	1/2 Core HQ	2	0.06
GHD006	842	844	1/2 Core HQ	2	<0.01
GHD006	844	846	1/2 Core HQ	2	0.12
GHD006	846	848	1/2 Core HQ	2	0.06
GHD006	848	850	1/2 Core HQ	2	<0.01
GHD006	850	852	1/2 Core HQ	2	0.01
GHD006	852	854	1/2 Core HQ	2	0.24
GHD006	854	855.9	1/2 Core HQ	1.9	0.21