



SOVEREIGN GOLD
COMPANY LIMITED

ACN 145 184 667
Level 2, 131 Macquarie Street Sydney NSW 2000
T +612 9251 7177 F +612 9251 7500

ASX Release
8th November 2013

Encouraging gold results with high silver values at Rocky River-Uralla Project

- 13.39m @ 1.45g/t Au, 11.8g/t Ag from 13.79 - 27.69m (ZK0701)
- 10.35 metres @ 71.86g/t Ag from 15.85-26.20m (ZK0901)
- 2 diamond rigs drilling 1.55km long gold-bearing structure
- Mineralisation confirmed to 113m downhole
- Further holes to test mineralisation at 200m and 500m vertically
- Fully funded by Joint venture partner, SUGEC, funding \$2m exploration program on EL 7491 to March 2014
- Pinnacle Drilling engaged to operate 3rd drill rig (as part of a further \$2 million funding)

Sovereign Gold geologists consider the Lachlan-New England Fold Belts of NSW to have the ideal setting for Intrusion-Related Gold Systems (IRGS), a relatively newly recognised gold mineralisation style. IRGS are usually large tonnage; low-grade deposits associated with granitic style intrusions. Sovereign Gold geologists specialise in identifying the distinguishing diagnostic characteristics of IRGS.

Sovereign Gold has identified and acquired tenement portfolios that they consider are prospective for IRGS.

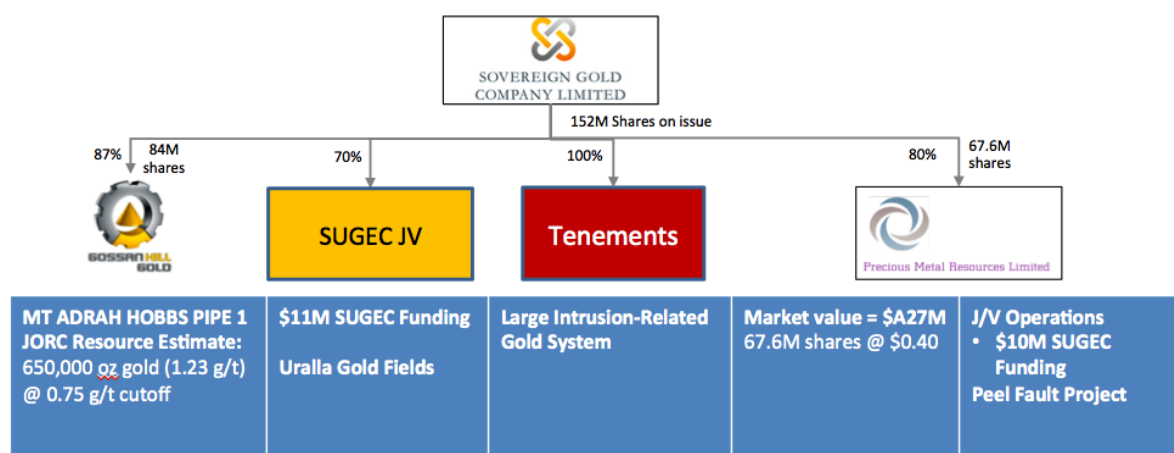
The Hobbs deposit at Mount Adrah appears to be a classic example of IRGS with extensive near homogenous gold mineralisation grade in monzodiorite rocks. Sovereign Gold geologists consider that the Rocky River-Uralla Project is another example of a large IRGS.

The results to date at the Rocky River-Uralla Project have identified a 1.55km strike length and drill intersections including 13.9m of 1.45 g/t Au and 11.8 g/t Ag, providing strong evidence of this mineralisation style.

Whilst the Mount Adrah Hobbs deposit is giving strong indications of developing into a significant IRGS gold deposit, it is important to recognise that the Rocky River-Uralla Project was Sovereign Gold's cornerstone asset and has considerable potential.

Sovereign Gold is exploring the Rocky River-Uralla Project concurrently with the Mount Adrah Hobbs deposit.

EL 7491 currently under joint venture with SUGEC who are spending \$2 million on EL 7491 to March 2014 (earning 30%), as part of a total exploration funding commitment of \$21 million through J/V and MOU on 10 tenements where Sovereign Gold Gold has a majority interest.





Encouraging Results

A 2,500m multiple hole diamond drilling program is underway on a 1.55km long gold-bearing structure in EL 7491 (ASX: 29 April 2013; 5 August 2013). This newly discovered mineralisation is part of the large Rocky River-Uralla Intrusion-Related Gold System.

Following detailed geological mapping and geochemical and geophysical surveys a series of close-spaced north-east dominant mineralised structures and subsidiary semi-orthogonal structures that cut north-west trending felsic dykes were discovered. One of the **mineralised shear zones has been traced for 1.55km** and is the current focus of drilling.

Martins Shaft-style mineralisation has been intersected in the felsic dykes. Also drilling has revealed brecciation and silica-sulphide flooding accompanied by tongues of mineralised felsic dykes in mineralised metasediments along the 1.55km long structure.

This extensive mineralised shear zone fault system may represent a high-level fracture fluid plumbing system developed above a potential IRGS Hobbs-style pipe.

The drilling program is testing the gold grades laterally and vertically along the 1.55km long gold-bearing structure to establish a JORC compliant resource.

Results have been received for four holes (ZK0301, ZK0701, ZK0003 and ZK0901) which have been completed and assayed since the update of 5 August 2013.

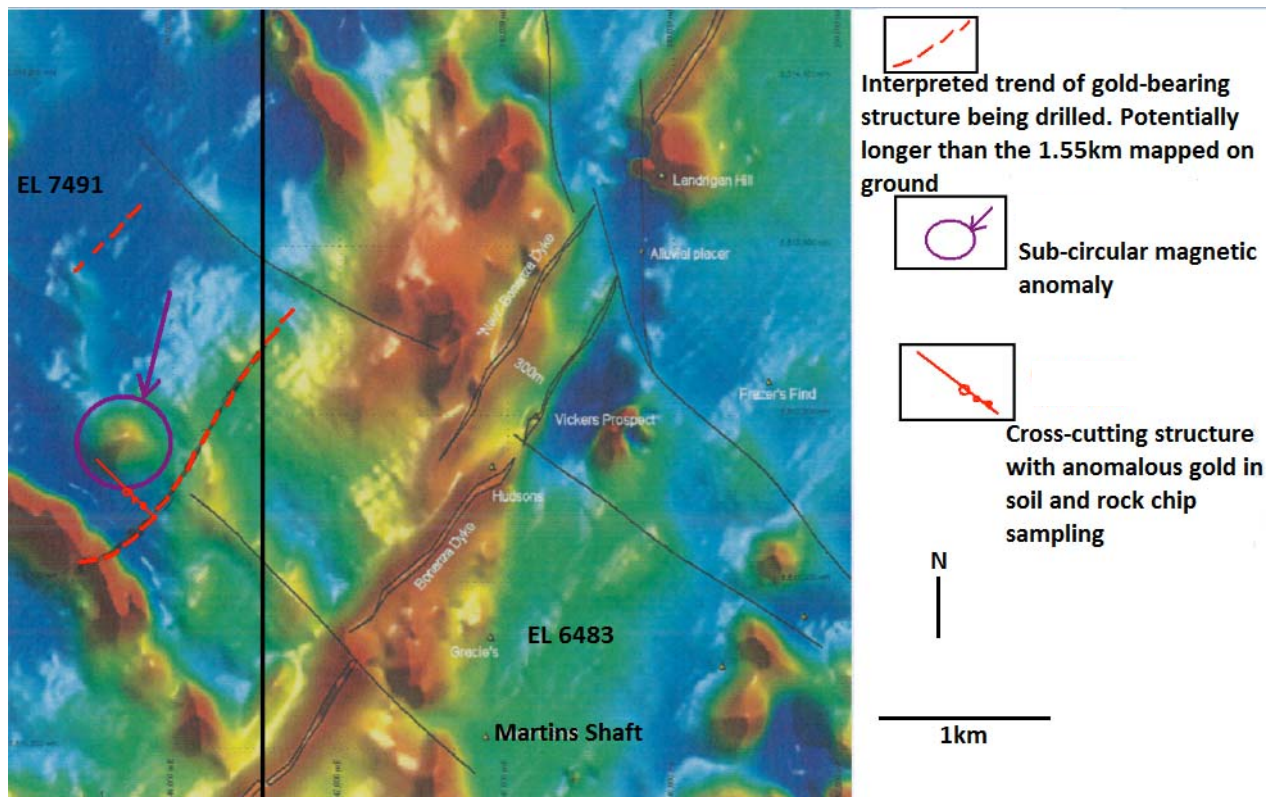
Summary

Diamond Drill Hole ZK0301, encountered intermittent gold mineralisation over 15.20m downhole from 35.20m-50.4m including:

- 3.43 metres @ 1.68g/t Au from 43.77-47.2m
- 2.25 metres @ 2.72g/t Au from 44.95-47.2m
- 1.35 metres @ 3.36g/t Au from 44.95-46.3m
- 0.74 metres @ 4.26g/t Au from 44.95-45.69m

Diamond Drill Hole ZK0701, encountered mineralisation over 20.4m downhole from 7.65m-27.69m including:

- 13.90 metres @ 1.45g/t Au, 11.88g/t Ag from 13.79m-27.69m
- 9.46 metres @ 1.75g/t Au, 15.44g/t Ag from 13.79m-23.25m
- 3.61 metres @ 2.61g/t Au, 13.79m-14.70m
- 2.34 metres @ 3.02g/t Au from 14.56m-16.90m
- 4.10 metres @ 1.30 g/t Au, 31.84g/t Ag from 17.40m-21.50m



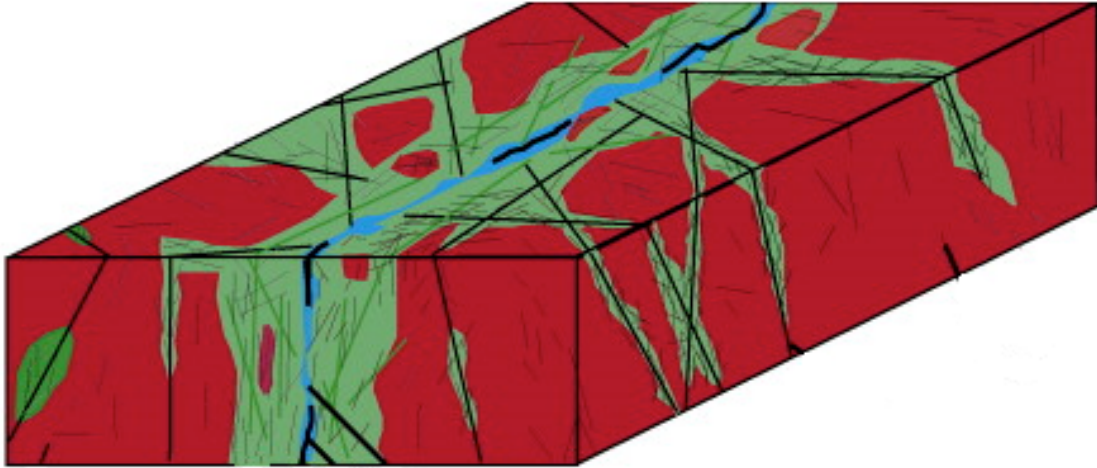
Reduction to Pole Magnetic image showing trace on gold-bearing structure being drilled and parallel structure (red dashed line). A sub-circular magnetic high (enclosed by purple circle) may represent the hornfelsed carapace ('cooked' metasediments with disseminated sulphides) above a blind pipe-like pluton.

Diamond Drill Hole ZK0003, encountered intermittent gold mineralisation over 23.45 metres downhole from 101.85m-125.30m including:

- 11.45 metres @ 0.71g/t Au from 101.85-113.3m
- 8.95 metres @ 0.80g/t Au from 101.85-110.80m
- 2.64 metres @ 1.03g/t Au from 108.16-110.80m
- Gold continued intermittently widespread downhole including 1.13g/t Au over 0.78m from 116.40-117.80m and 0.86g/t Au over 0.50m from 124.8-125.30m, indicating system is widening at depth.

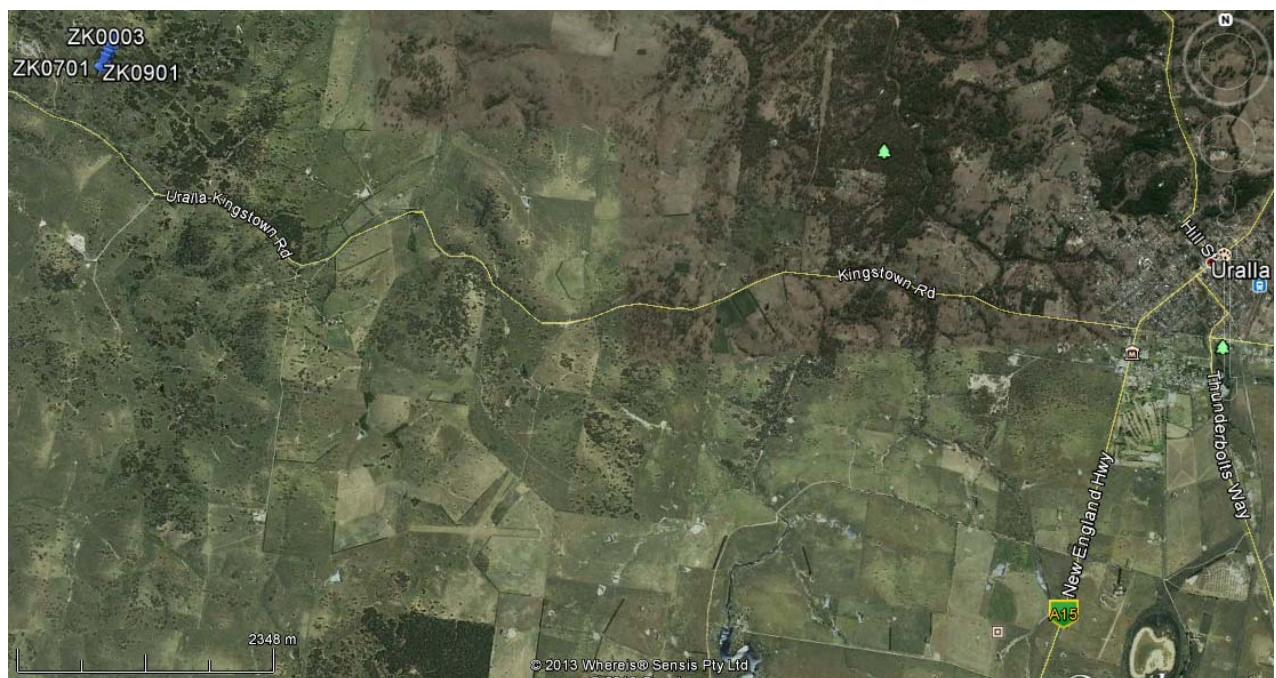
Diamond Drill Hole ZK0901, encountered gold mineralisation over 21.70 metres downhole from 8.50m-30.20m including:

- 10.35 metres @ 71.86g/t Ag from 15.85-26.20m
- 5.48 metres @ 1.24g/t Au 57.39g/t Ag from 14.62-20.10m
- 2.35 metres @ 1.99g/t Au, 78.86g/t Ag from 15.85-18.20m
- 1.75 metres @ 2.35g/t Au, 97.56g/t Ag from 15.85-17.60m
- 0.80 metres @ 3.08g/t Au, 72.10g/t Ag from 15.85-16.65m
- Anomalous gold continued intermittently widespread downhole to 30.20m including 0.35 metres @ 1.22g/t Au from 29.85-30.20m.

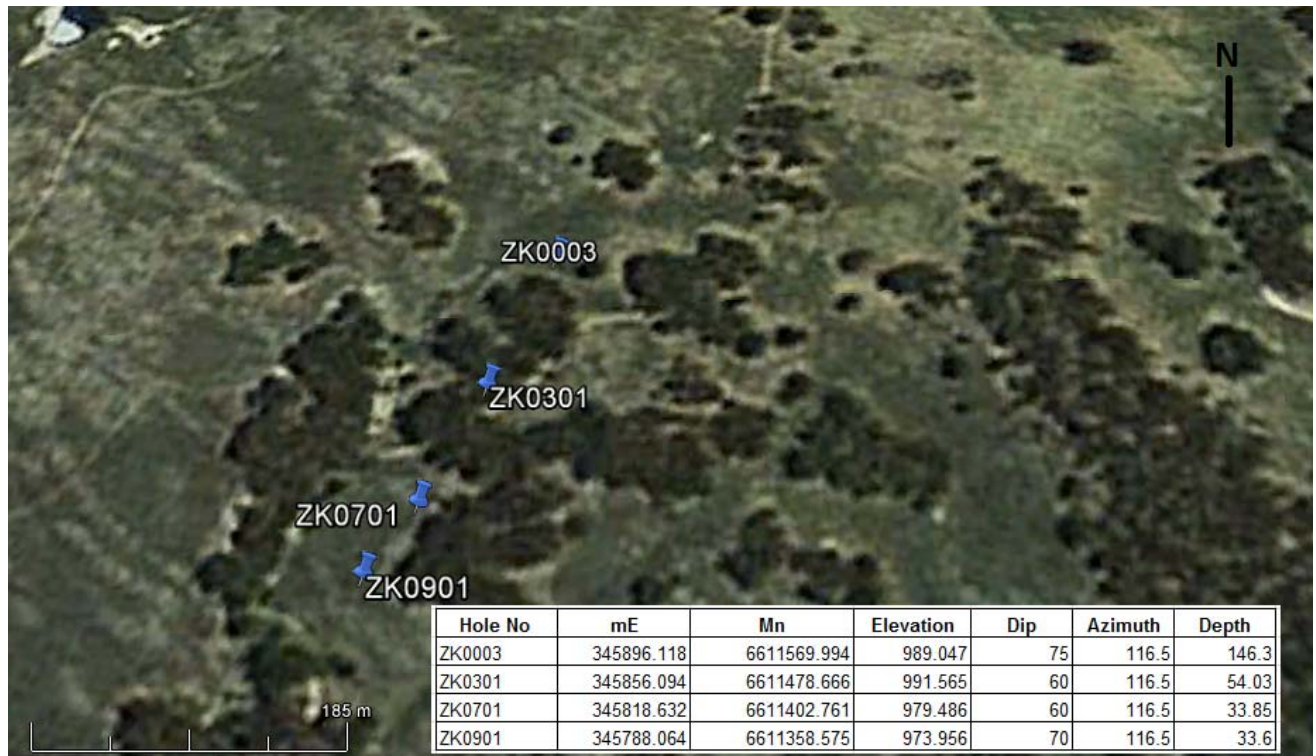


Conceptual Target: 1.55km long north-east trending shear structure (main fault zone shown in blue) surrounded by altered fractured zone (green). The main fault structure is associated with and cut by oblique faults. Geochemical and rock chip mapping has located nearby (within 500m) parallel alteration structures with similar mineralisation. The structures are flooded with felsic dykes and sulphides that may be derived from a small pipe-like pluton at depth. The current target being drilled and the parallel and oblique structures occur from surface and have potential for an open-cut gold resource.

Figures Diamond Drill Holes ZK0003, ZK0301, ZK0701, ZK0901



Diamond Drill Holes ZK0003, ZK0301, ZK0701 and ZK0901 within the Rocky River-Uralla Goldfield. Uralla (far RHS) is 450km NNW of Sydney.



Collar coordinates and parameters of Diamond Drill Holes ZK0003, ZK0301, ZK0701 and ZK0901

ZK0301				Au-AA25
Sample No.	From (metres)	To (metres)	Interval	Au ppm
ZK0301-H9	35.2	35.76	0.56	0.59
ZK0301-H10	35.76	36.88	1.12	0.04
ZK0301-H11	36.88	37.05	0.17	0.97
ZK0301-H20	43.77	44.26	0.49	1.31
ZK0301-H21	44.26	44.95	0.69	0.03
ZK0301-H22	44.95	45.69	0.74	4.26
ZK0301-H23	45.69	46.3	0.61	2.27
ZK0301-H24	46.3	47.2	0.9	0.64
ZK0301-H28	49.75	50.4	0.65	0.34

Table 1

Diamond Drill Hole ZK0301, encountered intermittent gold mineralisation over 15.20m downhole from 35.20m-50.4m including: 1.68g/t Au over 3.43 metres from 43.77-47.2m; 2.72g/t Au over 2.25 metres from 44.95-47.2m; 3.36g/t Au over 1.35 metres from 44.95-46.3m; 4.26g/t Au over 0.74 metres from 44.95-45.69m

ALS Certificate of Analysis
BR13145901



ZK0701				Au-AA25	ME-ICP41	Table 2
Sample No.	From (metres)	To (metres)	Interval	Au ppm	Ag ppm	Diamond Drill Hole ZK0701, encountered mineralisation over 20.4m downhole from 7.65m-27.69m including 1.45g/t Au and 11.88g/t Ag over 13.90metres from 13.79m-27.69m; including 3.02/t Au over 2.34 metres from 14.56m-16.90m and 31.84/t Ag over 4.10 metres from 17.40m-21.50m ALS Certificate of Analysis BR13145901
ZK0701-H1	7.65	8.2	0.55	0.21	0.3	
ZK0701-H2	11.39	11.8	0.41	0.24	0.6	
ZK0701-H3	13.79	14.19	0.4	1.98	3.7	
ZK0701-H4	14.19	14.56	0.37	2.5	2.7	
ZK0701-H5	14.56	15.7	1.14	3.42	2	
ZK0701-H6	15.7	16.18	0.48	1.97	2.2	
ZK0701-H7	16.18	16.9	0.72	3.08	4.8	
ZK0701-H8	16.9	17.4	0.5	1.31	6.8	
ZK0701-H9	17.4	17.6	0.2	0.73	48.2	
ZK0701-H10	17.6	19.4	1.8	1.23	30.3	
ZK0701-H11	19.4	21.5	2.1	1.41	31.6	
ZK0701-H12	21.5	22.4	0.9	0.84	0.8	
ZK0701-H13	22.4	23.25	0.85	1.22	2.6	
ZK0701-H14	23.25	26.8	3.55	0.74	2.5	
ZK0701-H15	26.8	27	0.2	1.68	43.7	
ZK0701-H16	27	27.69	0.69	0.94	2.1	



ZK00003				Au-AA25
Sample No.	From (metres)	To (metres)	Interval	Au ppm
ZK0003-H1	60.5	60.9	0.4	0.21
ZK0003-H7	99	99.67	0.67	0.12
ZK0003-H10	101.85	102.05	0.2	1.1
ZK0003-H11	102.05	102.85	0.8	0.6
ZK0003-H12	102.85	103.82	0.97	0.6
ZK0003-H13	103.82	104.71	0.89	0.94
ZK0003-H14	104.71	105.6	0.89	0.59
ZK0003-H15	105.6	106.43	0.83	0.99
ZK0003-H16	106.43	107.3	0.87	0.61
ZK0003-H17	107.3	108.16	0.86	0.54
ZK0003-H18	108.16	108.99	0.83	0.81
ZK0003-H19	108.99	109.79	0.8	1.18
ZK0003-H20	109.79	110.8	1.01	1.08
ZK0003-H21	110.8	111.7	0.9	0.12
ZK0003-H22	111.7	112.4	0.7	0.01
ZK0003-H23	112.4	113.3	0.9	1.05
ZK0003-H24	113.3	113.95	0.65	0.05
ZK0003-H25	113.95	114.73	0.78	0.2
ZK0003-H26	114.73	115.6	0.87	0.55
ZK0003-H27	115.6	116.4	0.8	0.05
ZK0003-H28	116.4	117.18	0.78	1.13
ZK0003-H33	120.2	121.1	0.9	0.11
ZK0003-H34	121.1	122	0.9	0.16
ZK0003-H38	124.8	125.3	0.5	0.86

Table 3

Diamond Drill Hole ZK0003, encountered intermittent gold mineralisation over 23.45 metres downhole from 101.85m-125.30m including 0.71g/t Au over 11.45 metres from 101.85-113.3m; 0.80g/t Au over 8.95m from 101.85-110.80m; 1.03g/t Au over 2.64m from 108.16-110.80m

ALS Certificate of Analysis
BR13126115



ZK0901				Au- AA25	ME- ICP41	Ag- OG46
Sample No.	From (metres)	To (metres)	Interval	Au ppm	Ag ppm	Ag ppm
ZK0901-H2	8.50	9.76	1.26	0.89	1.9	
ZK0901-H3	12.15	13.85	1.70	0.01	0.2	
ZK0901-H4	13.85	14.62	0.77	0.1	<0.2	
ZK0901-H5	14.62	15.85	1.23	0.69	0.6	
ZK0901-H6	15.85	16.65	0.80	3.08	72.1	
ZK0901-H7	16.65	17.60	0.95	1.73	>100	119
ZK0901-H8	17.60	18.20	0.60	0.94	24.3	
ZK0901-H9	18.20	19.45	1.25	0.73	76.1	
ZK0901-H10	19.45	20.10	0.65	0.53	51.3	
ZK0901-H11	20.10	20.94	0.84	0.12	3.4	
ZK0901-H12	20.94	21.85	0.91	0.26	55.2	
ZK0901-H13	21.85	22.55	0.70	0.28	>100	237
ZK0901-H14	22.55	23.65	1.10	0.32	1.4	
ZK0901-H15	23.65	24.66	1.01	0.25	>100	121
ZK0901-H16	24.66	25.60	0.94	0.1	60.5	
ZK0901-H17	25.60	26.20	0.60	0.29	50.6	
ZK0901-H18	26.20	26.85	0.65	0.56	2.6	
ZK0901-H19	26.85	27.85	1.00	0.32	1.1	
ZK0901-H20	27.85	28.70	0.85	0.64	1.4	
ZK0901-H21	28.70	29.85	1.15	0.05	0.2	
ZK0901-H22	29.85	30.20	0.35	1.22	1.5	

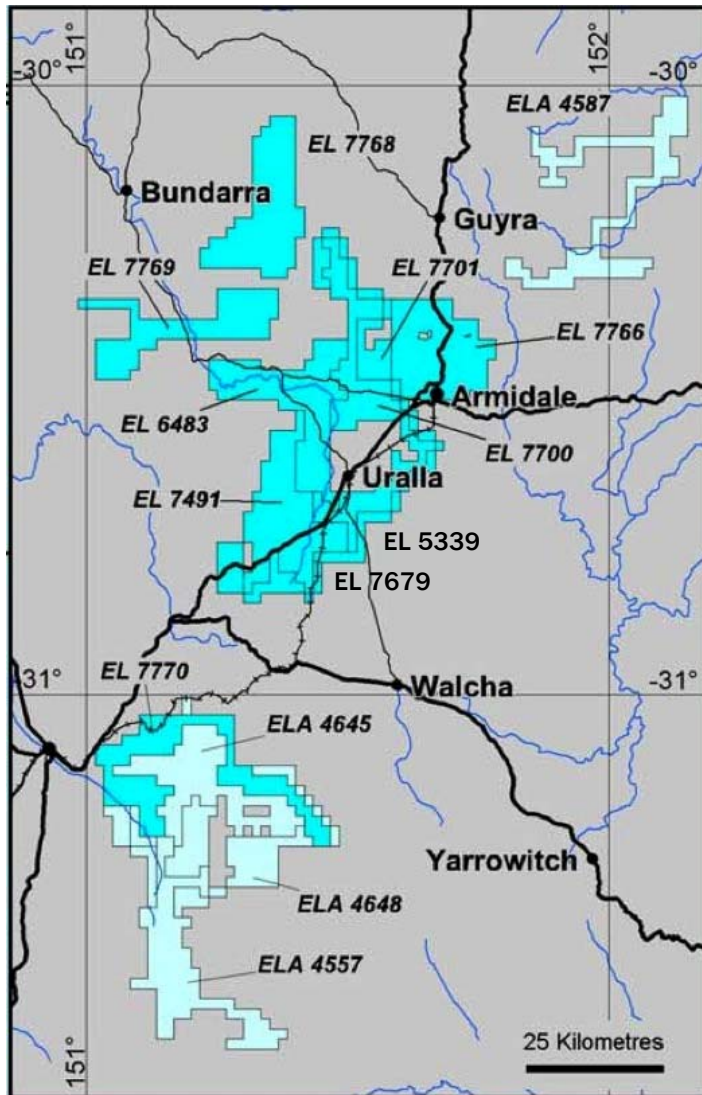
Table 4

Diamond Drill Hole ZK0901, encountered mineralisation over 21.7m downhole from 8.50m-30.20m including 71.86g/t Ag over 10.35 metres from 15.85-26.20m; 1.24g/t Au and 57.39g/t Ag over 5.48 metres from 14.62-20.10m; 2.35g/t Au and 97.56g/t Ag over 1.75 metres from 15.85-17.60m; 3.08g/t Au and 72.10g/t Ag over 0.80 metres from 15.85-16.65m

ALS Certificate of Analysis BR13154954



Sovereign Gold and PMR New England Tenements



Tenement		Expenditure Commitment
EL7491	SOC	\$2 Million
EL7700	SOC	\$1 Million
EL7701	SOC	\$1 Million
EL7766	SOC	\$1.5 Million
EL7768	SOC	\$2 Million
EL7769	SOC	\$1.5 Million
EL7770	SOC	\$2 Million
EL4474	PMR	\$4 Million
EL5339	PMR	\$4 Million
EL7679	PMR	\$2 Million
		\$21 Million

Qualifying Statements

The information in this report that relates to Exploration Information is based on information compiled by Michael Leu a Member of The Australasian Institute of Mining and Metallurgy and the Australian Institute of Geoscientists.

Mr Leu is a qualified geologist and is a director of Sovereign Gold Company Limited.

Mr Leu has sufficient experience, which is relevant to the style of mineralization and type of deposit under consideration and to the activity, which they are undertaking to qualify as Competent Persons as defined in the 2012 Edition of the Australasian Code for Reporting of Exploration Results, Mineral Resources and Ore Resources.

Mr Leu consents to the inclusion in this report of the Exploration Information in the form and context in which it appears.



Table 1

The following table provides explanations required under JORC 2012

Section 1 Sampling Techniques and Data

Criteria	JORC Code explanation	Commentary
Sampling techniques	<ul style="list-style-type: none"> Nature and quality of sampling (eg cut channels, random chips, or specific specialised industry standard measurement tools appropriate to the minerals under investigation, such as down hole gamma sondes, or handheld XRF instruments, etc). These examples should not be taken as limiting the broad meaning of sampling. 	<ul style="list-style-type: none"> ½ Core NQ or BQ core
	<ul style="list-style-type: none"> Include reference to measures taken to ensure sample representivity and the appropriate calibration of any measurement tools or systems used. 	<ul style="list-style-type: none"> Consistent cut distance relative to mark up or orientation line along core
	<ul style="list-style-type: none"> Aspects of the determination of mineralisation that are Material to the Public Report. 	<ul style="list-style-type: none"> Fire Assay Gold. Gold – Method Au-AA25, Au is predominantly held in sulphides within disseminated sericite-sulphide alteration. Multielement Analysis – Method ME-MS61. Analyses by Australian Laboratory Services Pty. Ltd. (ALS).
	<ul style="list-style-type: none"> In cases where ‘industry standard’ work has been done this would be relatively simple (eg ‘reverse circulation drilling was used to obtain 1 m samples from which 3 kg was pulverised to produce a 30 g charge for fire assay’). In other cases more explanation may be required, such as where there is coarse gold that has inherent sampling problems. Unusual commodities or mineralisation types (eg submarine nodules) may warrant disclosure of detailed information. 	<ul style="list-style-type: none"> Sawn half NQ and BQ core with sample lengths ranging from 0.1 metres to 2.51metres was sent to ALS laboratories and was pulverised to produce a 30g charge for fire assay (Au_AA25), and 4 acid digestion for 48 element ICP-AES and ICP-MS analysis (ME-MS61)



Criteria	JORC Code explanation	Commentary
<i>Drilling techniques</i>	<ul style="list-style-type: none"> • <i>Drill type (eg core, reverse circulation, open-hole hammer, rotary air blast, auger, Bangka, sonic, etc) and details (eg core diameter, triple or standard tube, depth of diamond tails, face-sampling bit or other type, whether core is oriented and if so, by what method, etc).</i> 	<ul style="list-style-type: none"> • Diamond, oriented NQ and BQ core
<i>Drill sample recovery</i>	<ul style="list-style-type: none"> • <i>Method of recording and assessing core and chip sample recoveries and results assessed.</i> 	<ul style="list-style-type: none"> • Lithological and geotechnical logging, photography
	<ul style="list-style-type: none"> • <i>Measures taken to maximise sample recovery and ensure representative nature of the samples.</i> 	<ul style="list-style-type: none"> • NQ and BQ core with overall recovery of >90%
	<ul style="list-style-type: none"> • <i>Whether a relationship exists between sample recovery and grade and whether sample bias may have occurred due to preferential loss/gain of fine/coarse material.</i> 	<ul style="list-style-type: none"> • NQ and BQ core with overall recovery of >90% – no relationship has been observed between core recovery and grade with the data currently available
<i>Logging</i>	<ul style="list-style-type: none"> • <i>Whether core and chip samples have been geologically and geotechnically logged to a level of detail to support appropriate Mineral Resource estimation, mining studies and metallurgical studies.</i> 	<ul style="list-style-type: none"> • Yes core has been logged both geologically and geotechnically to a level of detail to support appropriate Mineral Resource estimation
	<ul style="list-style-type: none"> • <i>Whether logging is qualitative or quantitative in nature. Core (or costean, channel, etc) photography.</i> 	<ul style="list-style-type: none"> • Yes, NQ and BQ core logged and photographed
	<ul style="list-style-type: none"> • <i>The total length and percentage of the relevant intersections logged.</i> 	<ul style="list-style-type: none"> • 100%
<i>Sub-sampling techniques and sample preparation</i>	<ul style="list-style-type: none"> • <i>If core, whether cut or sawn and whether quarter, half or all core taken.</i> 	<ul style="list-style-type: none"> • Half NQ and BQ core cut with a core saw
	<ul style="list-style-type: none"> • <i>If non-core, whether riffled, tube sampled, rotary split, etc and whether sampled wet or dry.</i> 	<ul style="list-style-type: none"> • Not applicable at this stage of the program



Criteria	JORC Code explanation	Commentary
	<ul style="list-style-type: none"> For all sample types, the nature, quality and appropriateness of the sample preparation technique. 	<ul style="list-style-type: none"> Half NQ and BQ core cut with a core saw. Consistent cut distance relative to mark up or orientation line along NQ core. High quality and appropriateness of sample preparation technique
	<ul style="list-style-type: none"> Quality control procedures adopted for all sub-sampling stages to maximise representivity of samples. 	<ul style="list-style-type: none"> Half NQ and BQ core cut with a core saw. Consistent cut distance relative to mark up or orientation line along NQ and BQ core. Consistent selection of one half, recorded by both drill logs and photographs
	<ul style="list-style-type: none"> Measures taken to ensure that the sampling is representative of the in situ material collected, including for instance results for field duplicate/second-half sampling. 	<ul style="list-style-type: none"> Appropriate measures taken – half core remaining if further analysis warranted
	<ul style="list-style-type: none"> Whether sample sizes are appropriate to the grain size of the material being sampled. 	<ul style="list-style-type: none"> Yes, sample sizes are appropriate to the grain size of the material being sampled
Quality of assay data and laboratory tests	<ul style="list-style-type: none"> The nature, quality and appropriateness of the assaying and laboratory procedures used and whether the technique is considered partial or total. 	<ul style="list-style-type: none"> Analyses by Australian Laboratory Services Pty. Ltd. (ALS), appropriate techniques of fire assay for gold and ICP-AES and ICP-MS for multi-element analysis. Techniques considered total for the type of mineralization sampled.
	<ul style="list-style-type: none"> For geophysical tools, spectrometres, handheld XRF instruments, etc, the parametres used in determining the analysis including instrument make and model, reading times, calibrations factors applied and their derivation, etc. 	<ul style="list-style-type: none"> Not relevant at this stage of the program
	<ul style="list-style-type: none"> Nature of quality control procedures adopted (eg standards, blanks, duplicates, external laboratory checks) and whether acceptable levels of accuracy (ie lack of bias) and precision have been established. 	<ul style="list-style-type: none"> Internal standards and blanks not used at this early stage



Criteria	JORC Code explanation	Commentary
<i>Verification of sampling and assaying</i>	<ul style="list-style-type: none"> <i>The verification of significant intersections by either independent or alternative company personnel.</i> 	<ul style="list-style-type: none"> Not relevant at this stage of the program
	<ul style="list-style-type: none"> <i>The use of twinned holes.</i> 	<ul style="list-style-type: none"> Not relevant at this stage of the program
	<ul style="list-style-type: none"> <i>Documentation of primary data, data entry procedures, data verification, data storage (physical and electronic) protocols.</i> 	<ul style="list-style-type: none"> NQ and BQ core measured, photographed and logged by geologists. Digitally recorded plus back-up records.
	<ul style="list-style-type: none"> <i>Discuss any adjustment to assay data.</i> 	<ul style="list-style-type: none"> There is no adjustment to assay data
<i>Location of data points</i>	<ul style="list-style-type: none"> <i>Accuracy and quality of surveys used to locate drill holes (collar and down-hole surveys), trenches, mine workings and other locations used in Mineral Resource estimation.</i> 	<ul style="list-style-type: none"> Drill collars recorded with CORS. GPS that has a accuracy 5cm for location. Digital survey tool will be used for down-hole surveying.
	<ul style="list-style-type: none"> <i>Specification of the grid system used.</i> 	<ul style="list-style-type: none"> MGA94 (Zone 56)
	<ul style="list-style-type: none"> <i>Quality and adequacy of topographic control.</i> 	<ul style="list-style-type: none"> A digital topographic file is available in .dxf format. Drill collars recorded with CORS. GPS that has an elevation accuracy of 20cm.
<i>Data spacing and distribution</i>	<ul style="list-style-type: none"> <i>Data spacing for reporting of Exploration Results.</i> 	<ul style="list-style-type: none"> Not relevant to current drilling.
	<ul style="list-style-type: none"> <i>Whether the data spacing and distribution is sufficient to establish the degree of geological and grade continuity appropriate for the Mineral Resource and Ore Reserve estimation procedure(s) and classifications applied.</i> 	<ul style="list-style-type: none"> Not relevant to current drilling.



Criteria	JORC Code explanation	Commentary
	<ul style="list-style-type: none"> Whether sample compositing has been applied. 	<ul style="list-style-type: none"> Sawn half NQ and BQ core with sample lengths ranging from 0.1 metres to 2.51metres was sent to ALS laboratories and was pulverised to produce a 30g charge for fire assay (Au_AA25), and 4 acid digestion for 48 element ICP-AES and ICP-MS analysis (ME-MS61)
Orientation of data in relation to geological structure	<ul style="list-style-type: none"> Whether the orientation of sampling achieves unbiased sampling of possible structures and the extent to which this is known, considering the deposit type. 	<ul style="list-style-type: none"> Drill holes are designed to intersect mineralised structure normal to strike and are recorded as down-hole lengths.
	<ul style="list-style-type: none"> If the relationship between the drilling orientation and the orientation of key mineralised structures is considered to have introduced a sampling bias, this should be assessed and reported if material. 	<ul style="list-style-type: none"> Drill holes are designed to intersect mineralised structure normal to strike and are recorded as down-hole lengths. The drill hole azimuth and angle relative to the main mineralised structure is not considered to have introduced sampling bias.
Sample security	<ul style="list-style-type: none"> The measures taken to ensure sample security. 	<ul style="list-style-type: none"> Current core samples are securely stored at a private facility before express overnight freight to Australian Laboratory Services Pty. Ltd. (ALS) Brisbane. Sample movements and security documented by ALS Chain of Custody.
Audits or reviews	<ul style="list-style-type: none"> The results of any audits or reviews of sampling techniques and data. 	<ul style="list-style-type: none"> Not undertaken at this stage

Section 2 Reporting of Exploration Results

Criteria	JORC Code explanation	Commentary
Mineral tenement and land tenure status	<ul style="list-style-type: none"> Type, reference name/number, location and ownership including agreements or material issues with third parties such as joint ventures, partnerships, overriding royalties, native title interests, historical sites, wilderness or national park and environmental settings. 	<ul style="list-style-type: none"> EL 7491 is held by Micksture Pty. Ltd., a wholly owned subsidiary of Sovereign Gold Company Limited. It is currently under Joint Venture with SUGEC Resources Limited who are earning a 30% interest in the Licence.



Criteria	JORC Code explanation	Commentary																																								
	<ul style="list-style-type: none"> The security of the tenure held at the time of reporting along with any known impediments to obtaining a licence to operate in the area. 	<ul style="list-style-type: none"> Tenure is current and in good standing 																																								
Exploration done by other parties	<ul style="list-style-type: none"> Acknowledgment and appraisal of exploration by other parties. 	<ul style="list-style-type: none"> The mineralised structure currently being drilled was discovered in 2012 in EL 7491. No previous exploration by other parties has been undertaken in the portion of EL 7491. 																																								
Geology	<ul style="list-style-type: none"> Deposit type, geological setting and style of mineralisation. 	<ul style="list-style-type: none"> Intrusion-Related Gold System. Epizonal shear-fault structure hosts mineralisation. 																																								
Drill hole Information	<ul style="list-style-type: none"> A summary of all information material to the understanding of the exploration results including a tabulation of the following information for all Material drill holes: <ul style="list-style-type: none"> easting and northing of the drill hole collar elevation or RL (Reduced Level – elevation above sea level in metres) of the drill hole collar dip and azimuth of the hole down hole length and interception depth hole length. 	<table border="1"> <thead> <tr> <th>Hole ID</th> <th>Easting (m)</th> <th>North-ing (m)</th> <th>RL (m)</th> <th>Grid</th> <th>Collar Azi-muth</th> <th>Collar Dip</th> <th>Total Depth (m)</th> </tr> </thead> <tbody> <tr> <td>ZK0003</td> <td>345896.118</td> <td>6611 569.9 94</td> <td>989.047</td> <td>MGA94 Zone 56</td> <td>116.5</td> <td>75</td> <td>146.3</td> </tr> <tr> <td>ZK0301</td> <td>345856.094</td> <td>6611 478.6 66</td> <td>991.565</td> <td>MGA94 Zone 56</td> <td>116.5</td> <td>60</td> <td>54.03</td> </tr> <tr> <td>ZK0701</td> <td>345818.632</td> <td>6611 402.7 61</td> <td>979.486</td> <td>MGA94 Zone 56</td> <td>116.5</td> <td>60</td> <td>33.85</td> </tr> <tr> <td>ZK0901</td> <td>345788.064</td> <td>6611 358.5 75</td> <td>973.956</td> <td>MGA94 Zone 56</td> <td>116.5</td> <td>70</td> <td>33.6</td> </tr> </tbody> </table>	Hole ID	Easting (m)	North-ing (m)	RL (m)	Grid	Collar Azi-muth	Collar Dip	Total Depth (m)	ZK0003	345896.118	6611 569.9 94	989.047	MGA94 Zone 56	116.5	75	146.3	ZK0301	345856.094	6611 478.6 66	991.565	MGA94 Zone 56	116.5	60	54.03	ZK0701	345818.632	6611 402.7 61	979.486	MGA94 Zone 56	116.5	60	33.85	ZK0901	345788.064	6611 358.5 75	973.956	MGA94 Zone 56	116.5	70	33.6
Hole ID	Easting (m)	North-ing (m)	RL (m)	Grid	Collar Azi-muth	Collar Dip	Total Depth (m)																																			
ZK0003	345896.118	6611 569.9 94	989.047	MGA94 Zone 56	116.5	75	146.3																																			
ZK0301	345856.094	6611 478.6 66	991.565	MGA94 Zone 56	116.5	60	54.03																																			
ZK0701	345818.632	6611 402.7 61	979.486	MGA94 Zone 56	116.5	60	33.85																																			
ZK0901	345788.064	6611 358.5 75	973.956	MGA94 Zone 56	116.5	70	33.6																																			
	<ul style="list-style-type: none"> If the exclusion of this information is justified on the basis that the information is not Material and this exclusion does not detract from the understanding of the report, the Competent Person should clearly explain why this is the case. 	<ul style="list-style-type: none"> Not relevant 																																								



Criteria	JORC Code explanation	Commentary
<i>Data aggregation methods</i>	<ul style="list-style-type: none"> <i>In reporting Exploration Results, weighting averaging techniques, maximum and/or minimum grade truncations (eg cutting of high grades) and cut-off grades are usually Material and should be stated.</i> 	<ul style="list-style-type: none"> Uncut
	<ul style="list-style-type: none"> <i>Where aggregate intercepts incorporate short lengths of high grade results and longer lengths of low grade results, the procedure used for such aggregation should be stated and some typical examples of such aggregations should be shown in detail.</i> 	<ul style="list-style-type: none"> All aggregate intercepts detailed on tables for all diamond drill hole
	<ul style="list-style-type: none"> <i>The assumptions used for any reporting of metal equivalent values should be clearly stated.</i> 	<ul style="list-style-type: none"> None used
<i>Relationship between mineralisation widths and intercept lengths</i>	<ul style="list-style-type: none"> <i>These relationships are particularly important in the reporting of Exploration Results.</i> 	<ul style="list-style-type: none"> True width not currently known. All lengths are down-hole lengths and not true width.
	<ul style="list-style-type: none"> <i>If the geometry of the mineralisation with respect to the drill hole angle is known, its nature should be reported.</i> 	<ul style="list-style-type: none"> The precise geometry is not currently known but will be tested by planned drilling, with diamond drill hole azimuths designed to drill normal to the mineralised structure.
	<ul style="list-style-type: none"> <i>If it is not known and only the down-hole lengths are reported, there should be a clear statement to this effect (eg 'down-hole length, true width not known').</i> 	<ul style="list-style-type: none"> Down-hole length reported, true width not known
<i>Diagrams</i>	<ul style="list-style-type: none"> <i>Appropriate maps and sections (with scales) and tabulations of intercepts should be included for any significant discovery being reported These should include, but not be limited to a plan view of drill hole collar locations and appropriate sectional views.</i> 	<ul style="list-style-type: none"> Drill hole collar location map prepared.



Criteria	JORC Code explanation	Commentary
<i>Balanced reporting</i>	<ul style="list-style-type: none"> Where comprehensive reporting of all Exploration Results is not practicable, representative reporting of both low and high grades and/or widths should be practiced to avoid misleading reporting of Exploration Results. 	<ul style="list-style-type: none"> Representative reporting of all relevant grades above 0.11g/t Au is provided in tables to avoid misleading reporting of Exploration Results.
<i>Other substantive exploration data</i>	<ul style="list-style-type: none"> Other exploration data, if meaningful and material, should be reported including (but not limited to): geological observations; geophysical survey results; geochemical survey results; bulk samples – size and method of treatment; metallurgical test results; bulk density, groundwater, geotechnical and rock characteristics; potential deleterious or contaminating substances. 	<ul style="list-style-type: none"> Overview of exploration data leading to selection of drill targets provided.
<i>Further work</i>	<ul style="list-style-type: none"> The nature and scale of planned further work (eg tests for lateral extensions or depth extensions or large-scale step-out drilling). 	<ul style="list-style-type: none"> Test for lateral and depth extensions, resource delineation of the mineralised structure.
	<ul style="list-style-type: none"> Diagrams clearly highlighting the areas of possible extensions, including the main geological interpretations and future drilling areas, provided this information is not commercially sensitive. 	<ul style="list-style-type: none"> Diagrams are included in this report of strike of mineralised structures subject to further drilling.