



## SOVEREIGN GOLD COMPANY LIMITED

**Sovereign Gold Company Limited**  
ACN 145 184 667

Level 2, 131 Macquarie Street  
Sydney NSW 2000  
Tel: +61 2 9251 7177  
Fax: +61 2 9251 7500

### Contact

Rocco Tassone, Managing Director

e: [corporate@sovereigngold.com.au](mailto:corporate@sovereigngold.com.au)

### Latest News

[www.sovereigngold.com.au](http://www.sovereigngold.com.au)

### Directors / Officers

Charles Thomas (Chairman)  
Rocco Tassone (MD)  
Patrick Glovac

**ASX: SOC**

### Qualifying Statements

The information in this Report that relates to Exploration Information is based on information compiled by Michael Leu who is a member of The Australasian Institute of Mining and Metallurgy and the Australian Institute of Geoscientists.

Mr Leu is a qualified geologist and is the Chief Geologist of Sovereign Gold Company Limited.

Mr Leu has sufficient experience, which is relevant to the style of mineralisation and type of deposit under consideration and to the activity, which he is undertaking to qualify as a Competent Person as defined in the 2012 Edition of the Australasian Code for Reporting of Exploration Results, Mineral Resources and Ore Resources. Mr Leu consents to the inclusion in this announcement of the Exploration Information in the form and context in which it appears.

**ASX Release**  
30 June 2016

## Canadian Geological Team Appointed - Crescent Lake Lithium Project

- Canadian firm Mercator Geological Services Limited appointed to Crescent Lake Lithium Project to manage site due diligence including field evaluation, mapping, channel sampling and diamond drilling
- Mercator to review significant geological reports including the mineral claims which contain four deposits that comprise hard rock, lithium-bearing pegmatites.
- Further underexplored holdings with potential to discover additional lithium-bearing deposits will also be assessed and released to the market
- Reporting geologists members of Recognised Professional Organisations under JORC Code 2012
- Experienced in lithium-bearing pegmatites for reporting under NI43-101

Sovereign Gold Company Limited (**ASX: SOC**) advises the appointment of Mercator Geological Services Limited (**Mercator**) to manage site due diligence including field evaluation, mapping, channel sampling and diamond drilling.

Mercator offers a broad range of Professional Services including NI43-101 Technical Reporting.

Mercator will act as site professionals, exploration managers and provide staffing as required to complete the site due diligence.

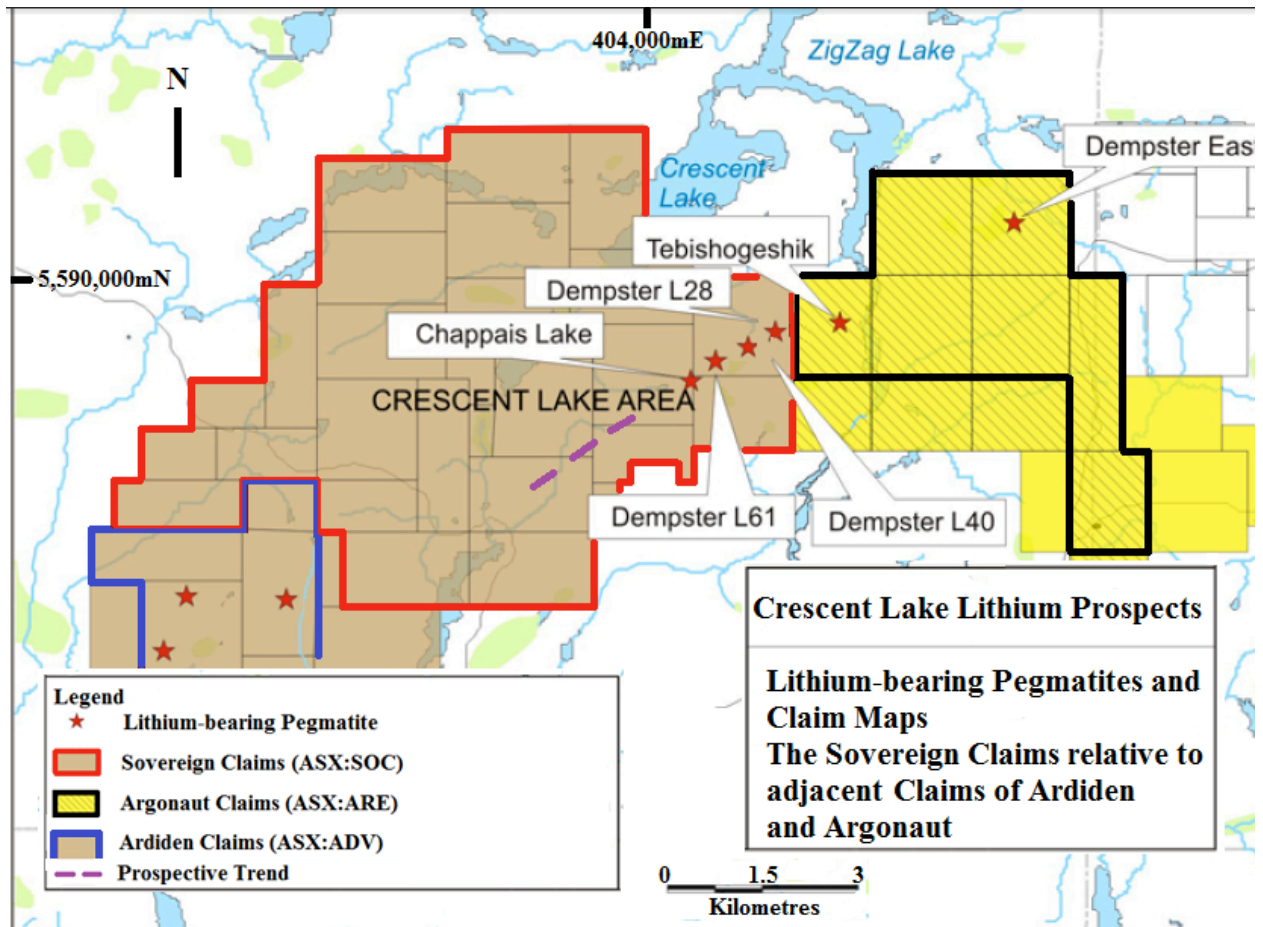


Figure 1: Lithium-bearing Pegmatites and claim map. The Sovereign Claims relative to the adjacent claims of Ardiden and Argonaut

For further information please contact:

Rocco Tassone,  
Managing Director  
Sovereign Gold Company Limited

Telephone: +61 2 9251 7177