

## ASX ANNOUNCEMENT

30 January 2019

### About Force

- Force Commodities Limited is a Perth based lithium exploration and development focussed company listed on the Australian Stock Exchange (ASX Code: 4CE)

### Project Summary

- 70% interest in JV over Kitotolo-Katamba Lithium Project, DRC.
- 51% interest in JV over Kanuka Lithium Production Project, DRC.

### Directors and Management

**Mr David Sanders** - Chairperson  
**Mr Jason Brewer** – Managing Director  
**Mr Gedeon Pelesa** - Director  
**Mr Michael Fry** – CFO/CoSec

### Capital Structure

#### Shares on Issue:

423,915,868 fully paid ordinary

#### Options on Issue:

- 26,416,662 exercisable @\$0.032; expiring 30 June 2019
- 10,000,000 exercisable @\$0.035; expiring 30 June 2019
- 937,500 exercisable @\$0.048; expiring 30 June 2019
- 2,000,000 exercisable @\$0.06; expiring 1 July 2020
- 2,000,000 exercisable @\$0.08; expiring 1 July 2020
- 2,500,000 exercisable @\$0.10; expiring 30 June 2020
- 1,800,000 Performance Rights; subject to vesting conditions

### Substantial Shareholders

#### Jihad Malaeb:

22,969,673 FPO shares – 5.42%

## December 2018 Quarter Review of Operations

### Highlights

#### Kanuka Lithium Production Project

- Phase 1 program completed of 45 RC holes completed for 2,673m; to test +5km pegmatite strike in main mining area (Kania) and parallel pegmatites (Kalombo Mushwima) less than 2km to the west.
- Assay results confirm the presence of widespread, from surface, multiple stacked and parallel, high grade lithium mineralised pegmatites.
- Significant intersections included:
  - 23m at 0.89% Li<sub>2</sub>O** from 30m, including **3m at 1.82% Li<sub>2</sub>O** from hole KLJV018;
  - 10m at 1.16% Li<sub>2</sub>O** from 24m, including **7m at 1.38% Li<sub>2</sub>O** from hole KJV006;
  - 5m at 1.07% Li<sub>2</sub>O** from 3m from hole KLJV011;
  - 3m at 1.10% Li<sub>2</sub>O** from 1m, **5m at 1.15% Li<sub>2</sub>O** from 14m and **2m at 0.99% Li<sub>2</sub>O** from 58m and ending in mineralisation from hole KLJV044;
  - 6m at 1.09% Li<sub>2</sub>O** from 24m and **6m at 1.18% Li<sub>2</sub>O** from 34m from hole KLJV017;
  - 4m at 0.93% Li<sub>2</sub>O** from 18m and **7m at 1.37% Li<sub>2</sub>O** from 39m from hole KLJV007;
  - 6m at 1.00% Li<sub>2</sub>O** from 48m and **9m at 0.97% Li<sub>2</sub>O** from 52m and ending in mineralisation from hole KLJV019;
  - 7m at 1.28% Li<sub>2</sub>O** from 52m, including **1m at 2.13% Li<sub>2</sub>O** ending in mineralisation from hole KLJV036; and
  - 10m at 0.79% Li<sub>2</sub>O** from 10m, including **6m at 1.13% Li<sub>2</sub>O** and **4m at 0.88% Li<sub>2</sub>O** from 26m from hole KLJV038.
- Results prove the potential of the Kibaran stratigraphy within the Kanuka Lithium Production Project area to host significant pegmatite-hosted lithium mineralisation.
- Assay results further confirm the potential for higher grade lithium mineralisation at depth, which is to be followed up by the Company with its next phase diamond drilling program.

### **Kitotolo-Katamba Lithium Project**

- 98 RC shallow holes completed for 4,272m of planned Phase 1 program consisting of ~15,000m of RC drilling and ~1,000m of diamond drilling – assays pending.
- Drilling program aimed to test +1 km pegmatite strike lying in inferred structural corridor SW of AVZ's Manono Project.
- Application for transformation of Exploration License PR12453 into a Mining Lease was lodged during the quarter. Transformation is an administrative process with Mining Licenses in DRC granted for a 30-year period.

### **Mt Adrah Gold Project**

- Company entered into an agreement to dispose of the Mt Adrah Gold Project.
- Company to receive consideration of up to \$500,000 in cash and shares.
- NSW Mines Department approval of the transfer is the last remaining condition precedent.
- On 6 December 2018, Force received from NSW Mines Department 'Notice of its Proposed Decision to Approve Transfer of EL7844 and EL8606'.

### **Halls Peak Base Metals Project**

- Company has entered into an agreement to dispose of the Halls Peak Base Metals Project to XS Resources Ltd.
- Company to receive consideration of up to \$665,800 in cash and shares.
- The agreements are subject to various Conditions Precedent, including the admittance to the Official List of ASX by XS Resources Ltd. XS Resources Ltd IPO prospectus is dated 10 September and was lodged with ASIC on that date. A copy of the IPO prospectus can be viewed at [www.xsresources.com.au](http://www.xsresources.com.au).

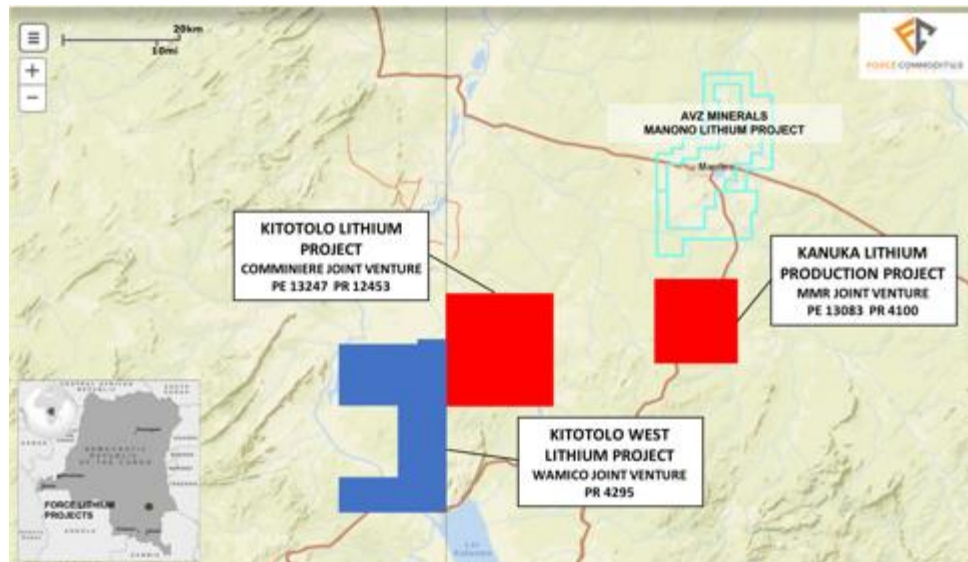
### **Corporate & Finance**

- Cash at bank as at 31 December 2018 of \$0.398m.
- Investment in ASX-listed Marquee Resources comprising 2,250,000 shares and 750,000 options exercisable at 20 cents on or before 30 September 2020, currently valued at ~\$135k (as at 29 January 2019). The Marquee Resources' shares are subject to escrow until end March 2019.

## Activities Report for the quarter ended 31 December 2018.

Force Commodities Limited (ASX Code: 4CE) (“**Force**” or the “**Company**”) provides its activities report for the quarter ended 31 December 2018.

Force has a majority interest in two highly prospective lithium projects (Kitotolo-Katamba Lithium Project, Kanuka Lithium Production Project) in the Tanganyika Province of the Democratic Republic of Congo (**DRC**) each of which have identified pegmatites across significant areas of their project area. The projects are highlighted in red in Figure 1.



**Figure 1.** Location Map: Force project interests in Kitotolo-Manono region. Owned interests (in red). Option interests (in blue).

In addition, Force has an option to acquire the Kitotolo West Lithium Project, which is also considered highly prospective for lithium mineralisation and has known areas of artisanal mining activities and exposed lithium bearing pegmatites.

Presently, the Company has a land-holding of ~594 km<sup>2</sup> in the Kitotolo-Manono area and should the Company proceed with the acquisition of the Kitotolo West Lithium Project, it will result in the Company increasing its land-holding to ~994 km<sup>2</sup> in the Kitotolo-Manono area and with all its licenses and project interests in close proximity to AVZ's Manono Project. The Kitotolo-Manono area is a 'world-class' lithium region.

AVZ's Manono Project is the largest lithium-rich LCT (lithium, caesium, tantalum) pegmatite deposit in the world. Work performed to date by AVZ has demonstrated that the pegmatites extend for a strike length of 13km+ and is more than 200m wide and more than 240m thick in places.

Historical records suggest that pegmatite field in the region extends over 500km from Kolwezi in the south-west to Kalemie in the north-east and that Force's lithium projects overlay a large section of the pegmatite field.

## 1. KITOTOLO-KATAMBA LITHIUM PROJECT (70%)

### 1.1 Overview

The Kitotolo-Katamba Lithium Project comprises Exploration License PR 12453 and Mining License PE 13247, and extends over an area of approx. 400Km<sup>2</sup>.

It is located south west of ASX listed AVZ Minerals' Manono Lithium Project.

Force has acquired a 70% interest in a new Joint Venture company together with DRC state-owned mining company La Congolaise d'Exploitation Minière (**Cominiere SA**) (30%) for the purpose of exploring in joint venture the Kitotolo Lithium Project.

A brief overview of the Project is as follows:

- Project comprises Exploration License PR 12453 and Mining License PE 13247, and extends over an area of approx. 400km<sup>2</sup>.
- Project area along strike from AVZ's 'world-class' Manono Project; considered to be one of the largest pegmatite bodies in the world.
- Joint venture agreement executed in November 2017, with incorporation of a new joint venture company, COMFORCE, to recognise Force's interest, management role and the planned exploration programs and proposed development activities completed during the quarter.
- JV partner, DRC state-owned mining company La Congolaise d'Exploitation Minière (Cominiere SA) hold 34 additional mining and exploration across 4 DRC provinces including a 25% interest in AVZ's Manono Project.
- Due diligence investigations identified spodumene in pegmatites across significant areas within Project area.
- Initial assay results confirm high grade lithium mineralisation (up to 2.15% Li<sub>2</sub>O) in pegmatites.
- Subsequent assays from test-pits and trenches confirm high-grade lithium mineralisation in shallow pegmatite bodies 1km along strike from the Katamba artisanal Pit.
- Project area has historical cassiterite and columbite-tantalum mining, minerals commonly found alongside Lithium.
- 16,000m AC-RC and diamond drilling program in progress.

### 1.2 Work Completed during December 2018 Quarter

#### Phase One RC Drill Program

The Company has completed the initial stage of its Phase One RC drill program which consisted of 98 RC holes for 4,272m.

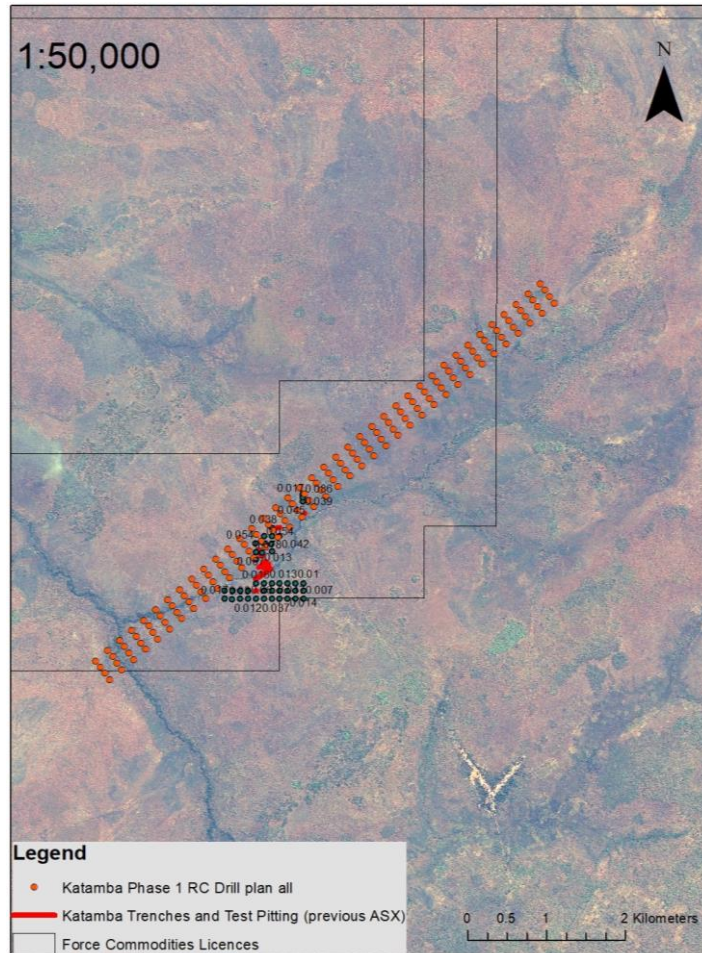
1,170 samples were collected for assaying. The samples have been sent to ALS for assay. Assays remain pending at the date of this report.

The program was designed to comprise shallow (40-60m) drilling to rapidly target near surface lithium mineralisation, extending 1km NE from the large artisanal Katamba Pit located in the north-eastern quadrant of the Project area and within a NE-SW trending pegmatite corridor, containing AVZ's Manono Project, Tantalex's Buckell Project and the Katamba Pit.

Further deeper AC/RC drilling is planned to follow the initial shallow drilling program, targeting depth extensions of the anticipated shallow intercepts.

Next stages to commence after the wet season and after receipt of assay results, subject raising further capital.

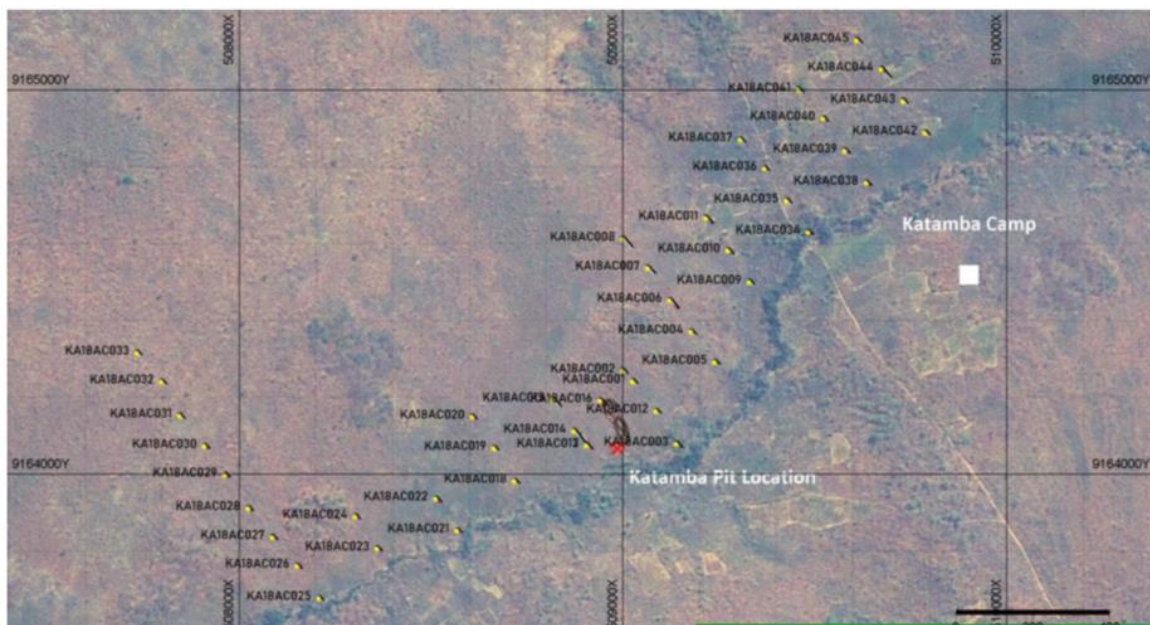
The Phase 1 RC drilling program at Kitotolo-Katamba is proposed to consist of 152 holes for ~15,000m, as set out below:



**Figure 2:** Planned Phase 1 RC drill program.

The planned drill-hole locations and depths are expected to change according to observations of down-hole geology.

A 1,000m diamond drilling program is proposed to commence after the results of the Phase 1 RC ~drilling program have been received and interpreted.



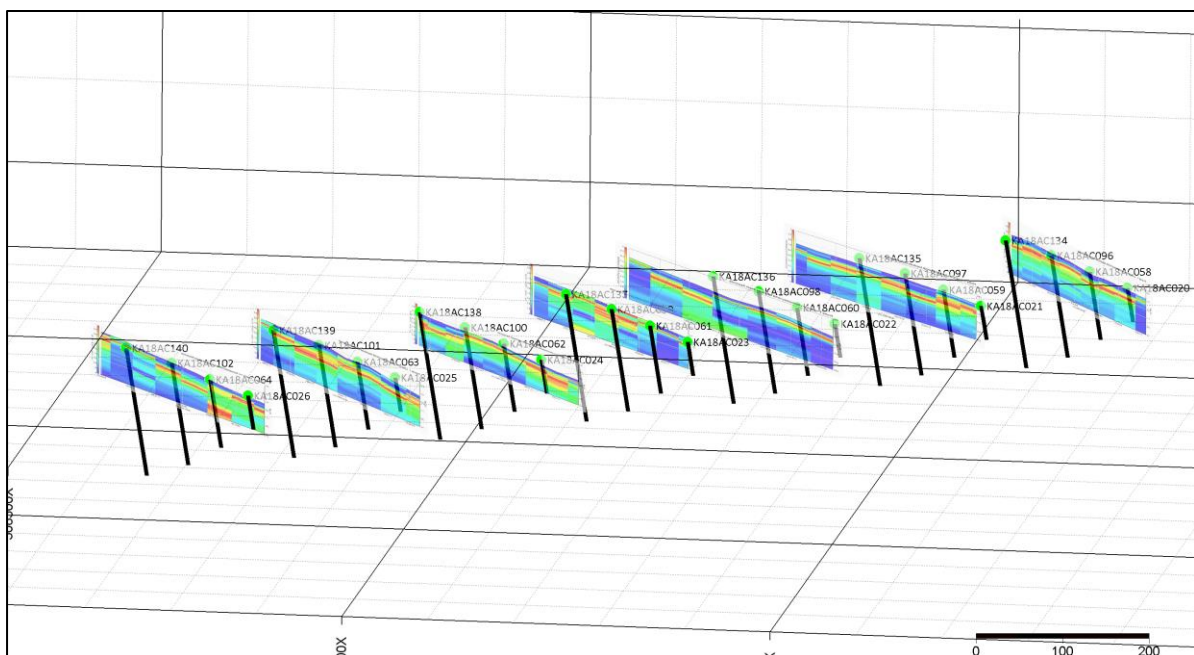
**Figure 3:** Completed Phase 1 RC Drilling at the Kitotolo-Katamba Lithium Project in the DRC

Images of the drill crew in action appear below.



**Images 1- 4:** Phase 1 RC Drilling at the Kitotolo-Katamba Lithium Project in the DRC

Passive Seismic survey (Tromino) work was used to assist in targeting the pegmatites beneath the cover. A Perth-based geophysics consultancy group has been engaged by the Company to process the raw data, interpret the datasets and advise on targeting of drill holes.



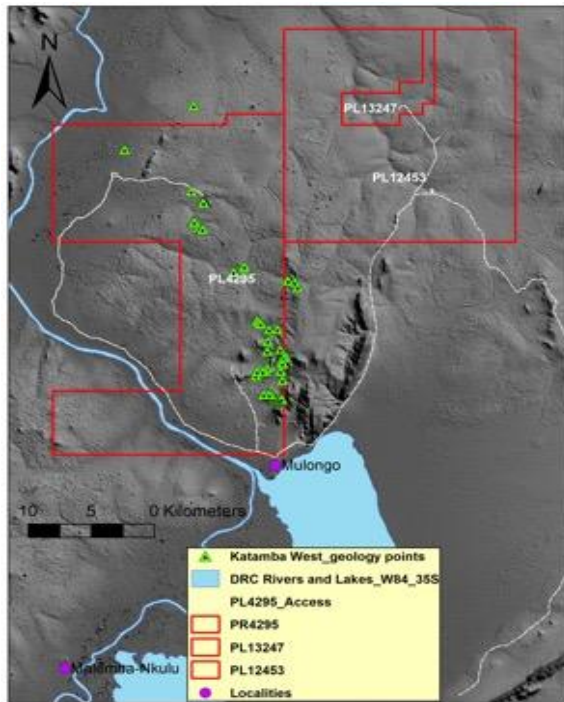
**Figure 4:** Completed Passive Seismic Lines (Lines 71-77) with Phase 1 RC drilling

## 2. KITOTOLO WEST LITHIUM PROJECT – UNDER OPTION

The Company announced in April 2018 that it acquired an option to acquire up to a 75% interest in the Kitotolo West Lithium Project.

The Kitotolo West Lithium Project comprises granted Exploration License PR4295.

PR4295 covers an area of approx. 400km<sup>2</sup> and is contiguous to the Company's existing Kitotolo-Katamba Lithium Project and 35km west of the Company's Kanuka Lithium Production Project.



**Figure 5.** Sample points from the Kitotolo West initial technical due diligence program.

In April 2018, the Company commenced its initial technical due diligence work which included geological mapping and sampling of pegmatitic host rocks along the inferred regional trend (refer June 2018 quarterly report).

A decision on whether to exercise the option to acquire the Project has not yet been reached.

## 3. KANUKA LITHIUM PRODUCTION PROJECT (51%)

The Kanuka Project area comprises two contiguous licenses: granted Mining License PE13082 and Exploration License PR4100.

These licenses cover an area of approx. 194km<sup>2</sup> and are located 20km east of the Company's existing Kitotolo Lithium Project. The licenses are also immediately south (approx. 4km from the license boundaries) of AVZ's Manono Project.

A brief overview of the Project is as follows:

- Project comprises Mining License PE13082 and Exploration License PR4100; covering an area of 194km<sup>2</sup> and containing extensive lithium bearing pegmatites.
- Project licenses located 5km immediately south of AVZ Mineral's 'world- class' Manono-Kitotolo Lithium Project licenses and 20km east of the Company's Kitotolo Lithium Project.
- Joint venture agreement executed in late March 2018 with incorporation of a new joint venture company, MINFORCE, to recognise Force's interest, management role and the planned exploration programs and proposed development activities completed during the quarter.
- JV partner, Mining Mineral Resources SPRL (MMR), is part of the VinMetals Group, a diversified mining, metals and trading group that has operated successfully in the DRC since 1997, with existing copper, cobalt, tantalum, tin and tungsten mines and processing plants.

- MMR currently operates tin and tantalum mining and processing operations on part of the license areas and in conjunction with the iTRi exports ICGLR-certified tin and tantalum to international markets.
- Pegmatites on the license areas have been identified on a NE-SW trend and exposed at surface and observed to extend for over 5km in length and 300m in width in the current main mining area. Pegmatites have in places been exposed by historic and current mining operations and have been exposed down to depths of up to 15 metres.
- Pegmatites have also been identified less than 2km from and parallel to the pegmatite in the main mining area and extend for over 5km in length and 200m in width.
- The Kanuka Lithium Project Joint Venture will benefit from the excellent infrastructure of MMR's established mining operation, with power, mine camp and offices as well as its own airstrip which will accelerate exploration activities.
- Whilst no previous lithium focused exploration or mining has been conducted on the license areas, grab samples of highly weathered shallow material taken as part of the Company's technical due diligence program reported high grade lithium mineralisation in the pegmatite including 2.12% Li<sub>2</sub>O and 1.93% Li<sub>2</sub>O.
- The Kanuka Lithium Project Joint Venture will utilise MMR's existing logistics capabilities in the region and on-site drilling equipment and mining fleet and services which are anticipated to substantially increase operating efficiencies, reduce costs and accelerate exploration and study work timeframes.
- Phase 1 program completed of 45 holes for 2,700m of RC drilling; diamond drilling program of ~1,000m to be based upon review of assay results and further capital raising.
- Phase 1 Drill Program targeted the strike continuity of the Kania Main Pegmatite exposed in the current main mining area and the new parallel pegmatites identified at the Kalombo Mushwima Prospect.

### **3.1 Phase One RC Drilling Program Completed**

The Company has completed its Phase One RC drill program which consisted of 45 holes for ~2,700m.

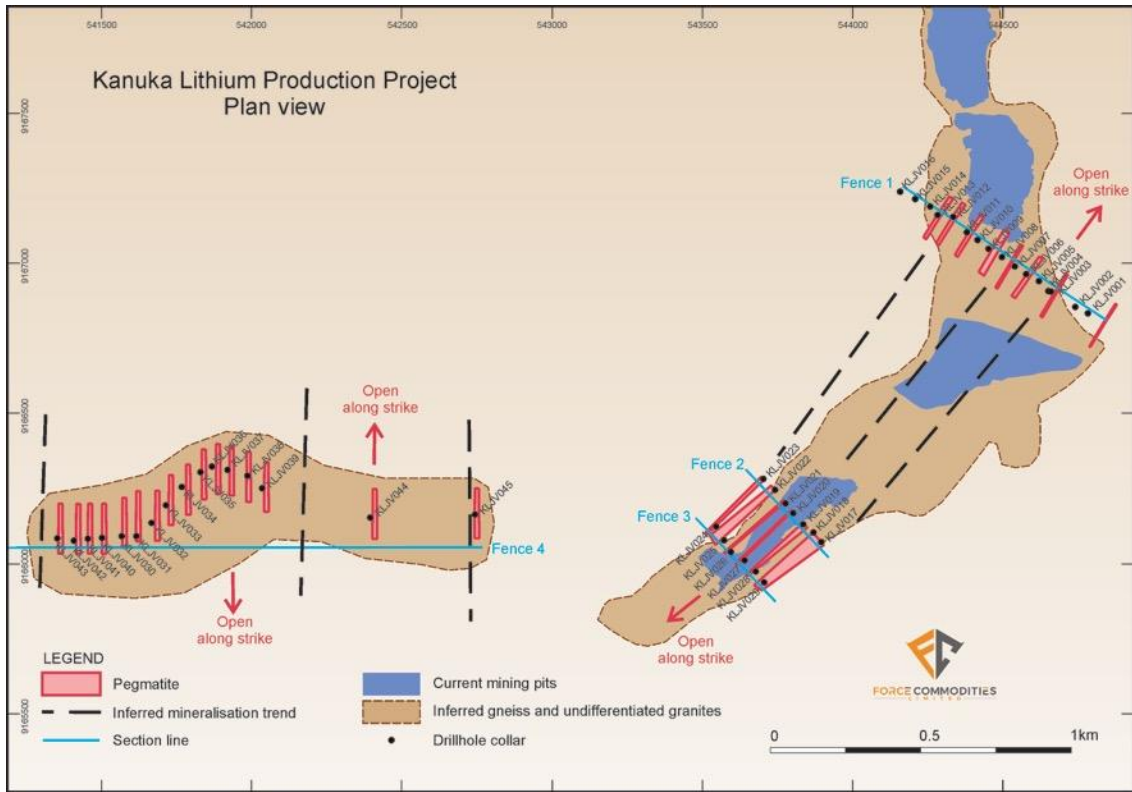
The Phase 1 RC Drilling program was designed to rapidly target near surface lithium mineralisation hosted within exposed pegmatites and confirm interpretations from the surface geological mapping work completed earlier this year within MMR's current main alluvial mining area. A further 1,000m diamond drilling program is planned following a review of the Phase 1 RC drilling results.

A total of 2,621 RC samples were taken from all 45 RC drill holes. Samples were dispatched from the Company's exploration camp at Kanuka to ALS in Lubumbashi in several batches for sample preparation and on-forwarded by ALS to its Johannesburg laboratory for multi-element analytical determinations (ME-MS61 48 element four acid digest).

The Phase 1 RC drilling program conducted from July to September 2018 was aimed to rapidly target near surface (40-60m) lithium mineralisation in a number of identified pegmatite bodies.

The drill program was based on mapping and sampling previously undertaken and below the current MMR alluvial tin and tantalum mining operations.

Drill Fences 1, 2 and 3 were completed on the Kania Main Pegmatite and Drill Fence 4 completed on the parallel pegmatites identified at the Kalombo Mushwima Prospect.



**Figure 6:** Schematic plan view highlighting geology and completed Phase 1 drilling program



**Images 5-6:** Drilling Activities at KLJV022 at the Kanuka Lithium Production Project



**Images 7-9:** Samples from the Phase 1 RC drilling at the Kanuka Lithium Production Project

### 3.2 Phase One RC Drilling Program Results

The assay results now received have confirmed that the drilling program has successfully intersected multiple and stacked lithium bearing pegmatite veins over an initial inferred strike of 1.3km at the Kania Main Pegmatite located inside the main open pit mining operation and over a width of up to 300m.

In addition, assays have confirmed that drilling at the Kalombo Mushwima Prospect, west of the Kania Main pegmatite, which has identified a very significant, shallow and broad lithium mineralised system over a width of 1.4km and which remains open in all directions.

#### Kalombo Mushwima Prospect – Assay Results

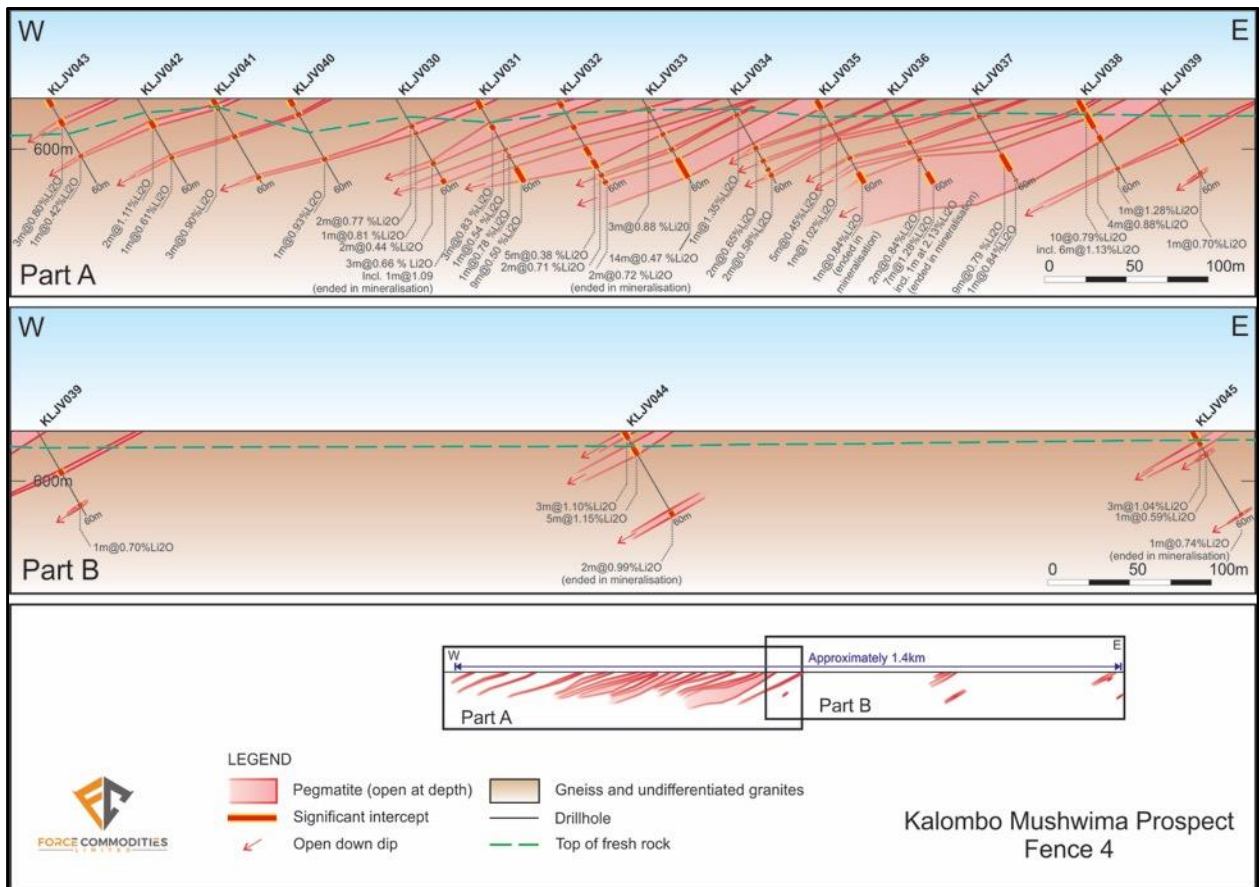
A total of 16 RC holes were drilled at the Kalombo Mushwima Prospect.

Assays results from the RC drilling at the Kalombo Mushwima Prospect have confirmed a very heavily and high-grade lithium mineralised system that remains open in all directions.

The pegmatite mineralisation dips gently 20° - 27° towards the north-west.

A series of closely spaced, stacked pegmatite veins occur as intercalations within a regional gneiss unit. These pegmatite veins are parallel to the regional foliation and range to over 60m in width.

The close spaced RC drill holes KLJV030 to KLJV043 have all confirmed significant and shallow lithium mineralisation in multiple pegmatites. RC drill holes KLJV044 and KLJV045 completed on a wider spacing indicates these pegmatites extend 1km to the east.



**Figure 7:** Schematic cross section of Kalombo Mushwima Prospect and significant drilling results – and extended section (A+B).

Significant assay results from the Phase 1 RC drilling program at the at the Kalombo Mushwima Prospect include:

- 7m at 1.28% Li<sub>2</sub>O from 52m, including 1m at 2.13% Li<sub>2</sub>O ending in mineralisation from drill hole KLJV036
- 10m at 0.79% Li<sub>2</sub>O from 10m, including 6m at 1.13% Li<sub>2</sub>O and 4m at 0.88% Li<sub>2</sub>O from 26m from drill hole KLJV038
- 3m at 0.91% Li<sub>2</sub>O from 5m from drill hole KLJV041
- 2m at 1.11% Li<sub>2</sub>O from 18m from drill hole KLJV042
- 3.0m at 0.80% Li<sub>2</sub>O from 15m from drill hole KLJV043
- 3m at 1.10% Li<sub>2</sub>O from 1m, 5m at 1.15% Li<sub>2</sub>O from 12m and 2m at 0.99% Li<sub>2</sub>O from 58m and ending in mineralisation from hole KLJV044
- 3m at 1.04% Li<sub>2</sub>O from 8m from drill hole KLJV045

The results further indicate the potential for deeper and broader higher grade lithium mineralisation at depth, with a number of drill holes reporting high grade intersections at depth and ending in mineralisation.

Force is planning further RC drilling at the Kalombo Mushwima Prospect, targeting potential extensions down-dip and along strike from the lithium mineralisation currently delineated.

In addition, 1,000m diamond drilling is also planned to commence in 2019, to ascertain structural orientation and to further constrain lithium mineralisation.

### **Kania Main Pegmatite – Assay Results**

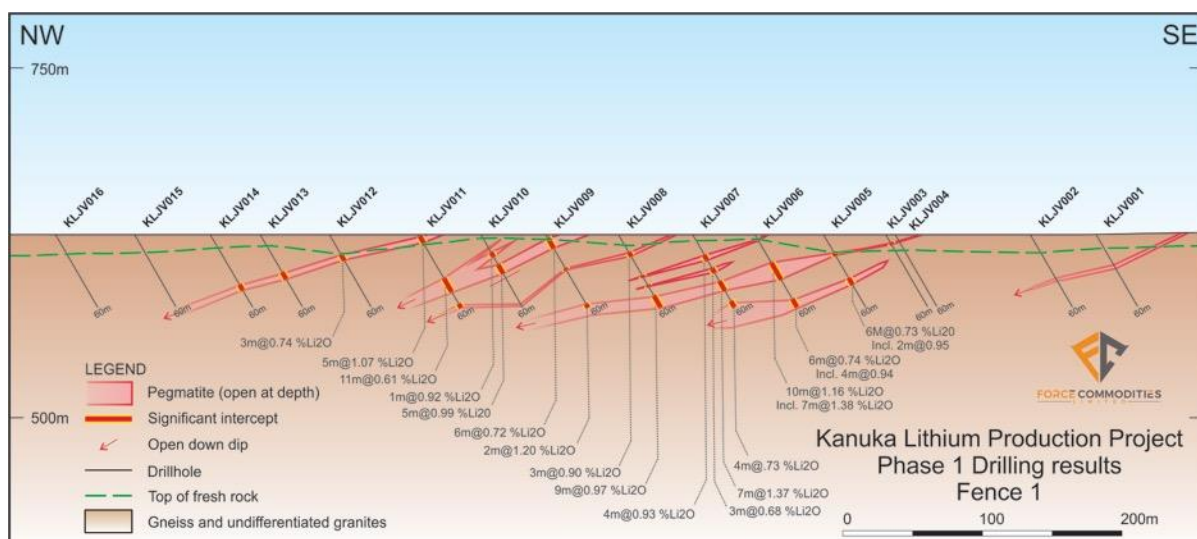
A total of 29 RC holes were drilled at the Kania Main Pegmatite.

The assay results now received have confirmed that the drilling program has successfully intersected multiple and stacked lithium bearing pegmatite veins over an initial inferred strike of 1.3km at the Kania Main Pegmatite located inside the main open pit mining operation and over a width of up to 300m.

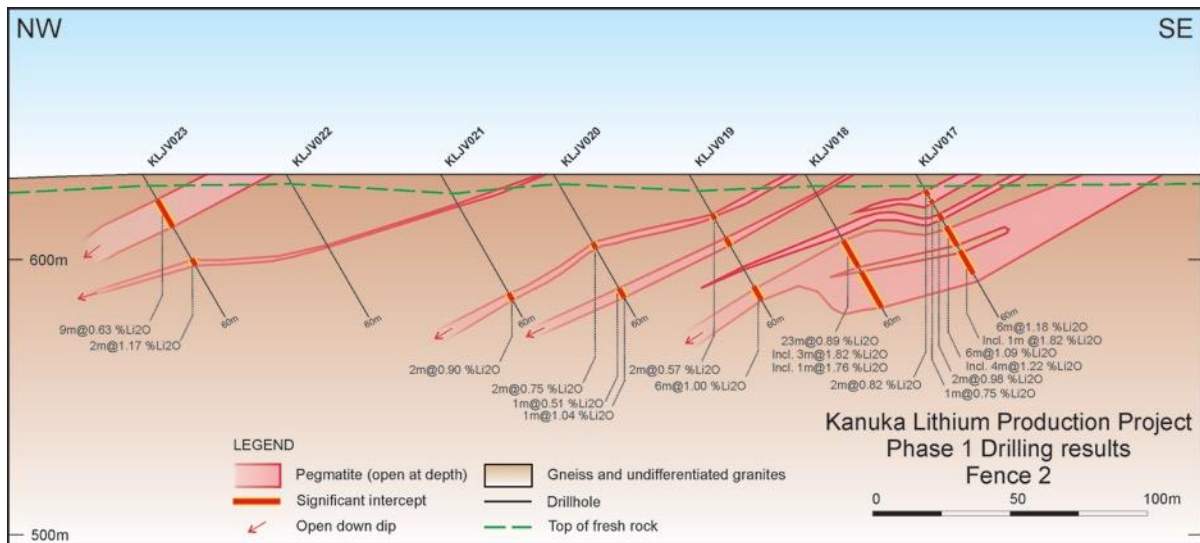
Assays results indicate the current mineralisation is open in all directions.

The results of the Phase 1 drilling program demonstrate that the Kania Main Pegmatite mineralisation dips gently at 20° - 27° towards the north-west and, importantly beyond the current area of alluvial mining operations.

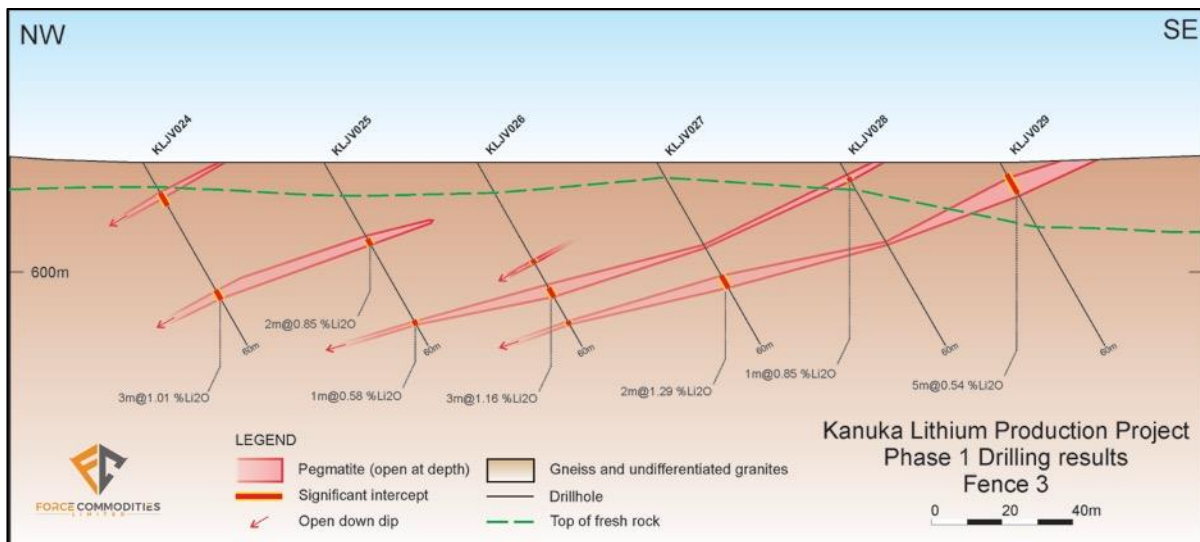
The Kania Main Pegmatite comprises a series of stacked pegmatite veins that are hosted by a regional gneiss unit. These pegmatite veins are parallel to the regional foliation and range in size from 1m to over 60m in width.



**Figure 8:** Schematic cross section highlighting Fence 1 and significant drilling results.



**Figure 9:** Schematic cross section highlighting Fence 2 and significant drilling results.



**Figure 10:** Schematic cross section highlighting Fence 3 and significant drilling results.

Significant assay results from the Phase 1 RC drilling program at Kania Main Pegmatite include:

- 10m at 1.16%  $\text{Li}_2\text{O}$  from 24m, including 7m at 1.38%  $\text{Li}_2\text{O}$  from hole KJV006
- 6m at 1.00%  $\text{Li}_2\text{O}$  from 48m and 9m at 0.97%  $\text{Li}_2\text{O}$  from 52m and ending in mineralisation from hole KLJV019
- 23m at 0.89%  $\text{Li}_2\text{O}$  from 30m, including 3m at 1.82%  $\text{Li}_2\text{O}$  from hole KLJV018
- 5m at 1.07%  $\text{Li}_2\text{O}$  from 5m from hole KLJV011
- 6m at 1.09%  $\text{Li}_2\text{O}$  from 24m and 6m at 1.18%  $\text{Li}_2\text{O}$  from 34m from hole KLJV017
- 4m at 0.93%  $\text{Li}_2\text{O}$  from 18m and 7m at 1.37%  $\text{Li}_2\text{O}$  from 39m from hole KLJV007
- 3m at 0.90%  $\text{Li}_2\text{O}$  from 15m and 9m at 0.97%  $\text{Li}_2\text{O}$  from 52m from hole KLJV008
- 2m at 1.17%  $\text{Li}_2\text{O}$  from 37m from hole KLJV023
- 3m at 1.16%  $\text{Li}_2\text{O}$  from 41m from hole KLJV026
- 2m at 1.29%  $\text{Li}_2\text{O}$  from 39m from hole KLJV027

Further phases of RC drilling are currently being planned, targeting depth extensions of the shallow intercepts and further step outs along strike of the current Phase 1 drilling.

The Company has again engaged Geolabs Global (Pty) Ltd (South Africa) in Johannesburg to complete further XRD analyses of selected high-grade lithium samples to provide further information on the lithia mineralogy.

## **4. NSW PROJECTS**

As reported previously, the Company is focussing its efforts and financial resources predominantly on its DRC Lithium Projects and for this reason it sought to attract parties interested in advancing its NSW projects via an earn-in, joint venture or sale opportunity, cash or share based.

### **4.1 Mt Adrah Gold Project**

The Company entered into a sale agreement for Mt Adrah Gold Project on 16 March 2018.

Pursuant to the terms of the agreement, Force is to receive consideration of up to \$500,000 in cash and shares; comprising \$250,000 in cash within 5 Business Days of satisfaction of certain conditions precedent plus a further \$250,000 in shares, or \$100,000 in cash plus options equal to 5% of the issued capital of the Purchasers or their nominees, upon completion of an initial public offering by one of the Purchasers.

Previously, on 16 April 2018, the Purchasers formally advised that they had completed their technical and legal due diligence and would proceed with the acquisition of the Mt Adrah Gold Project, comprising tenements EL6372, EL7844, EL8606.

Forms to transfer the title of the Mt Adrah tenements have been lodged with NSW Mines Department. On 6 December 2018, Force received from NSW Mines Department 'Notice of its Proposed Decision to Approve Transfer of EL7844 and EL8606'. Final notice of approval is expected in the short term. The application for transfer of EL6372 is under review by NSW Mines Department and notice of approval to transfer is also expected in the short term.

NSW Mines Department approval of the transfer is the last remaining condition precedent.

### **4.2 Halls Peak Base Metals Project**

During the September 2018 quarter, the Company advise that it has entered into individual option agreements to sell its two Halls Peak Project tenements in New South Wales for consideration of up to \$665,800 to XS Resources Limited (**XS Resources** or the **Acquirer**) (ACN 624 766 114).

Both options were exercisable within 30 days and were exercised. Completion is conditional upon the successful completion of an initial public offering (**IPO**) by XS Resources (**Condition Precedent**). The Condition Precedent was required to be completed by 31 December 2018, but has been extended to 31 March 2019 by mutual agreement between the parties.

XS Resources Ltd IPO prospectus is dated 10 September and was lodged with ASIC on that date. A copy of the IPO prospectus can be viewed at [www.xsresources.com.au](http://www.xsresources.com.au).

## **5. CORPORATE**

### **5.1 Cash at Bank**

Cash at bank for the Company as at the end of the quarter was \$0.398 million.

### **5.2 Shares**

As at 31 December 2018, shares on issue total 423,915,868.

### 5.3 Options

As at 31 December 2018, share options remaining on issue are as follows:

Type	Expiry Date	Exercise Price	Number	Amount Outstanding
Unlisted	30 June 2019	\$0.032	26,416,662	\$845,333
Unlisted	30 June 2019	\$0.035	10,000,000	\$350,000
Unlisted	5 August 2019	\$0.048	937,500	\$45,000
Unlisted	1 July 2020	\$0.06	2,000,000	\$120,000
unlisted	1 July 2020	\$0.08	2,000,000	\$160,000
unlisted	30 June 2020	\$0.10	2,500,000	\$250,000
			<b>43,854,162</b>	<b>\$1,770,333</b>

### 5.4 Consideration Shares Issued pursuant to ASX Listing Rule 7.3.2 Waiver

The Company has received waivers from ASX Listing Rule 7.3.2 relating to its acquisition of each of the Kitotolo Lithium Project and its Kanuka Lithium Production Project, allowing the Company to issue shares in relation to the acquisitions in excess of 3 months after shareholder approval. A condition of the waivers is that the Company report a summary of the number of shares issued during the reporting period, and the number that remain to be issued.

In accordance with this requirement the Company advises the following:

Project	Date of Waiver	Waiver Expiry Date	Number Issued During the Quarter	Number remaining to be Issued
Kitotolo Lithium Project	25 August 2017	4 October 2019	-	60,000,000
Kanuka Lithium Project	27 April 2018	25 May 2023	-	16,000,000
			-	<b>76,000,000</b>

## 7. SCHEDULE OF MINERAL TENEMENTS AS AT 31 DECEMBER 2018

Project	Status	Tenement	Location	Interest held by Force	
				at 31 March 2018	at 31 December 2017
Mt Adrah~	Granted	EL8606	Australia	99.5%	99.5%
Mt Adrah~	Granted	EL6372	Australia	99.5%	99.5%
Mt Adrah~	Granted	EL7844	Australia	99.5%	99.5%
Halls Peak~	Granted	EL4474	Australia	100%	100%
Halls Peak~	Granted	EL7679	Australia	55%	55%
Rocky River / Uralla	Granted	EL6483	Australia	55%	55%
Rocky River / Uralla	Granted	EL7491	Australia	55%	55%
Kitotolo Lithium Project	Granted	PR12453	DRC	70%*	70%
Kitotolo Lithium Project	Granted	PE13247	DRC	70%*	70%
Kanuka Lithium Project	Granted	PR4100	DRC	51%*	0%

EL, PR – Exploration Licence

PE – Mining Licence

~ - subject to sale agreements

\* - Lithium rights only

**END**

### **Competent Person Statement**

The geological related information in this report has been extracted from previous ASX announcements made by the Company available on the Company's website at [www.forcecommodities.com.au](http://www.forcecommodities.com.au) and on ASX. The Company is not aware of any new information or data that materially affects the information included in the original market announcements and, in the case of exploration results, geological interpretation and Exploration Targets, Mineral Resources or Ore Reserves, that all material assumptions and technical parameters underpinning the estimates in the relevant market announcement continue to apply and have not been materially changed.

The Company confirms that the form and context in which the Competent Person's findings are presented have not been materially modified from the original market announcement.

### **Forward looking statements**

Information included in this release constitutes forward-looking statements. Often, but not always, forward looking statements can generally be identified by the use of forward looking words such as "may", "will", "expect", "intend", "plan", "estimate", "anticipate", "continue", and "guidance", or other similar words and may include, without limitation, statements regarding plans, strategies and objectives of management, anticipated production or construction commencement dates and expected costs or production outputs.

Forward looking statements inherently involve known and unknown risks, uncertainties and other factors that may cause the Company's actual results, performance and achievements to differ materially from any future results, performance or achievements. Relevant factors may include, but are not limited to, changes in commodity prices, foreign exchange fluctuations and general economic conditions, increased costs and demand for production inputs, the speculative nature of exploration and project development, including the risks of obtaining necessary licences and permits and diminishing quantities or grades of reserves, political and social risks, changes to the regulatory framework within which the company operates or may in the future operate, environmental conditions including extreme weather conditions, recruitment and retention of personnel, industrial relations issues and litigation.

Forward looking statements are based on the Company and its management's good faith assumptions relating to the financial, market, regulatory and other relevant environments that will exist and affect the Company's business and operations in the future. The Company does not give any assurance that the assumptions on which forward looking statements are based will prove to be correct, or that the Company's business or operations will not be affected in any material manner by these or other factors not foreseen or foreseeable by the Company or management or beyond the Company's control.

Although the Company attempts and has attempted to identify factors that would cause actual actions, events or results to differ materially from those disclosed in forward looking statements, there may be other factors that could cause actual results, performance, achievements or events not to be as anticipated, estimated or intended, and many events are beyond the reasonable control of the Company. Accordingly, readers are cautioned not to place undue reliance on forward looking statements. Forward looking statements in these materials speak only at the date of issue. Subject to any continuing obligations under applicable law or any relevant stock exchange listing rules, in providing this information the company does not undertake any obligation to publicly update or revise any of the forward-looking statements or to advise of any change in events, conditions or circumstances on which any such statement is based.