

# D'AGUILAR



## HABITUAL RESOURCE COMPANY CREATION

MANAGING DIRECTOR, NICK MATHER

RIU SYDNEY RESOURCES ROUND-UP  
MAY 2011

# DISCLAIMER

## Forward Looking Statement

Whilst based on information from sources considered reliable, D'Aguilar Gold Limited, its directors, employees and consultants do not represent, warrant or guarantee, expressly or impliedly, that the information in this document and presentation is complete or accurate. To the maximum extent permitted by law, D'Aguilar Gold Limited, disclaims any responsibility to inform any recipient of this document and presentation of any matter that subsequently comes to its notice, which may affect any of the information contained in this document and presentation.

## JORC and Competent Person Statement

Information herein relating to Exploration Results is based on information compiled by Nicholas Mather B.Sc (Hons), who is a Fellow of The Australasian Institute of Mining and Metallurgy. Mr Mather is employed by D'Aguilar Gold Limited, as Chief Executive Officer.

Mr Mather has more than five years experience relevant to the style of mineralisation and type of deposit being reported and to the activity which he is undertaking to qualify as a Competent Person as defined in the 2004 Edition of the 'Australasian Code for Reporting of Exploration Results, Minerals Resources and Ore Reserves' (the JORC Code). This report is issued with the prior written consent of the Competent Person as to the form and context in which it appears.

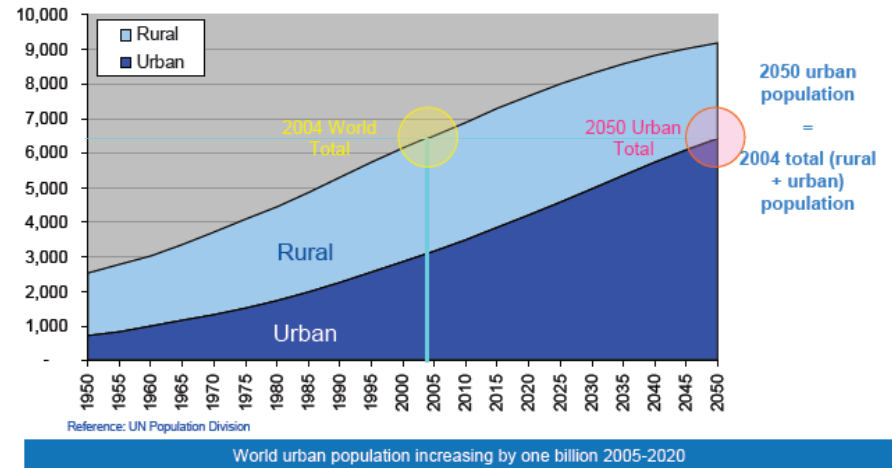
# GLOBAL GROWTH DRIVERS CONTINUE

## QE2 dilutes USD – resources replace currency

GOLD PRICE - U.S. DOLLAR (USD) EXCHANGE RATE  
Nov 12, 2010 - May 6, 2011

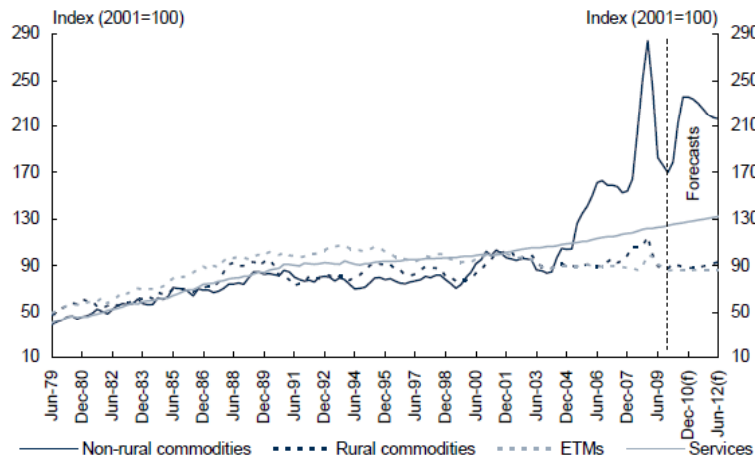


## World urbanisation driving demand



## Mining Boom Mark II

Chart 1: Export prices by goods and services



Note: Elaborately transformed manufactures (ETMs).  
Source: ABS cat. no. 5302.0 and Treasury.



# A TRILOGY OF KEY INGREDIENTS

- *Aligned stakeholders – build a team*
  - Dedicated, invested staff, think laterally
  - Economic buy in by local communities
- *A provincial project position*
  - National size significance
  - Strong Commodity market gas/ gold/ iron/copper
- *Well funded*
  - Strong, sticky investors

# PERSISTENCE, EXPERIENCE, SKILL – A ONE STOP SHOP



Bill Stubbs– Chairman after  
35 yrs of resource  
companies



Nick Mather– CEO,  
exploration  
strategist



Karl Schlobohm –group  
Company Secretary



Brian Moller– Director  
and group resource  
law specialist



Neil Wilkins – group Australian  
Exploration Manager



Greg Runge –  
General Manager



Carlie Rogers – group  
business development



Priy Jayasuriya –  
group CFO

ASX:DGR

**D'AGUILAR**  
GOLD LIMITED  
ACN 052 354 837

# D'AGUILAR AT THE MOMENT

## D'AGUILAR GOLD LIMITED

ASX : DGR | 322M SHARES



Investment 13% | 35m shares LSE AIM : SOLG



Investment 53% | 59m shares ASX : ANW



Investment 33% | 52m shares ASX : MET



Investment 29% | 27m shares ASX : NVG

(On completion \$3M IPO)

50%  
Post \$14M Seed  
Raising Apr 2011



CURRENTLY UNLISTED

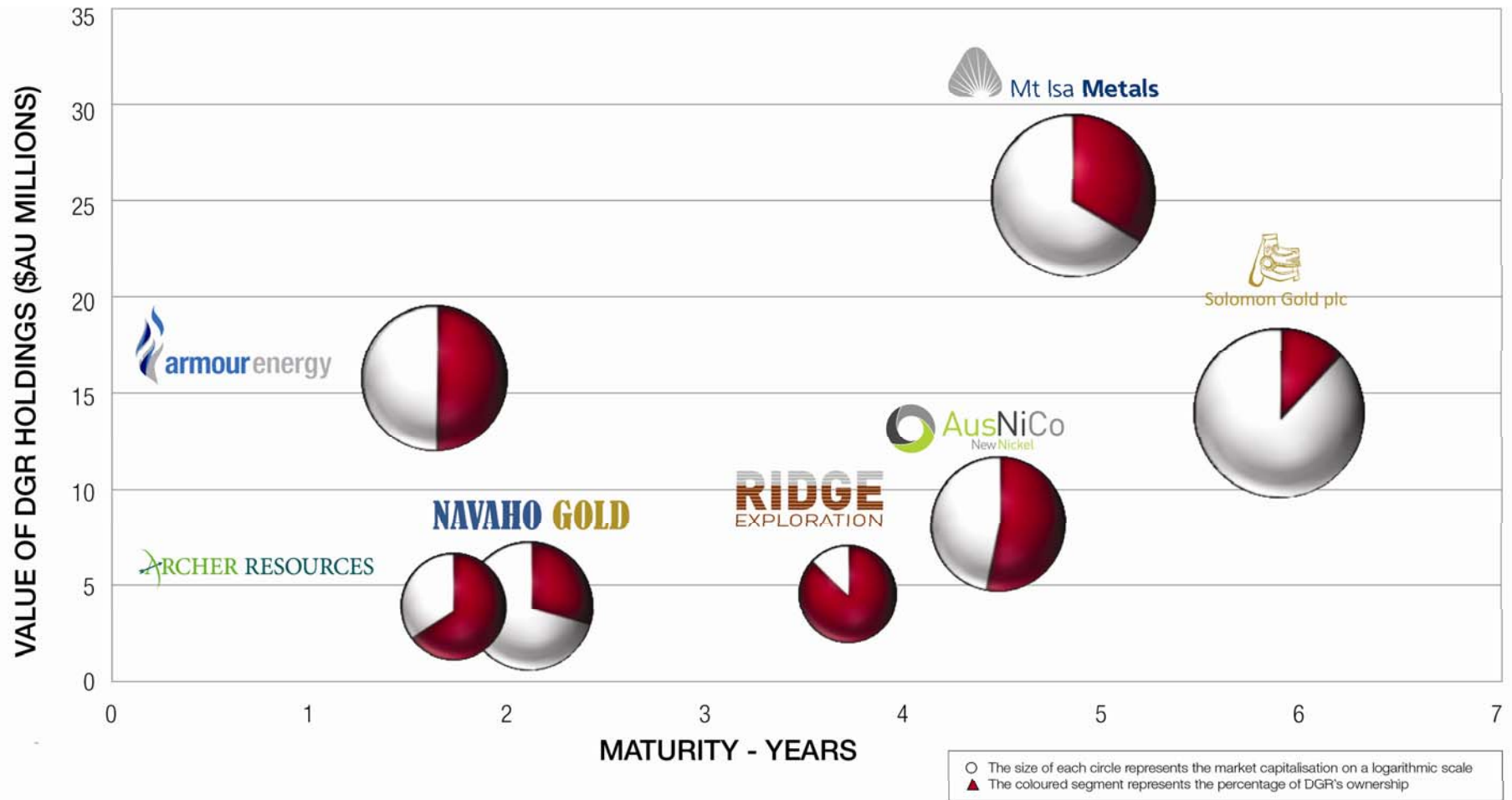
67%  
Post \$2M Seed  
Raising Feb 2011



86%

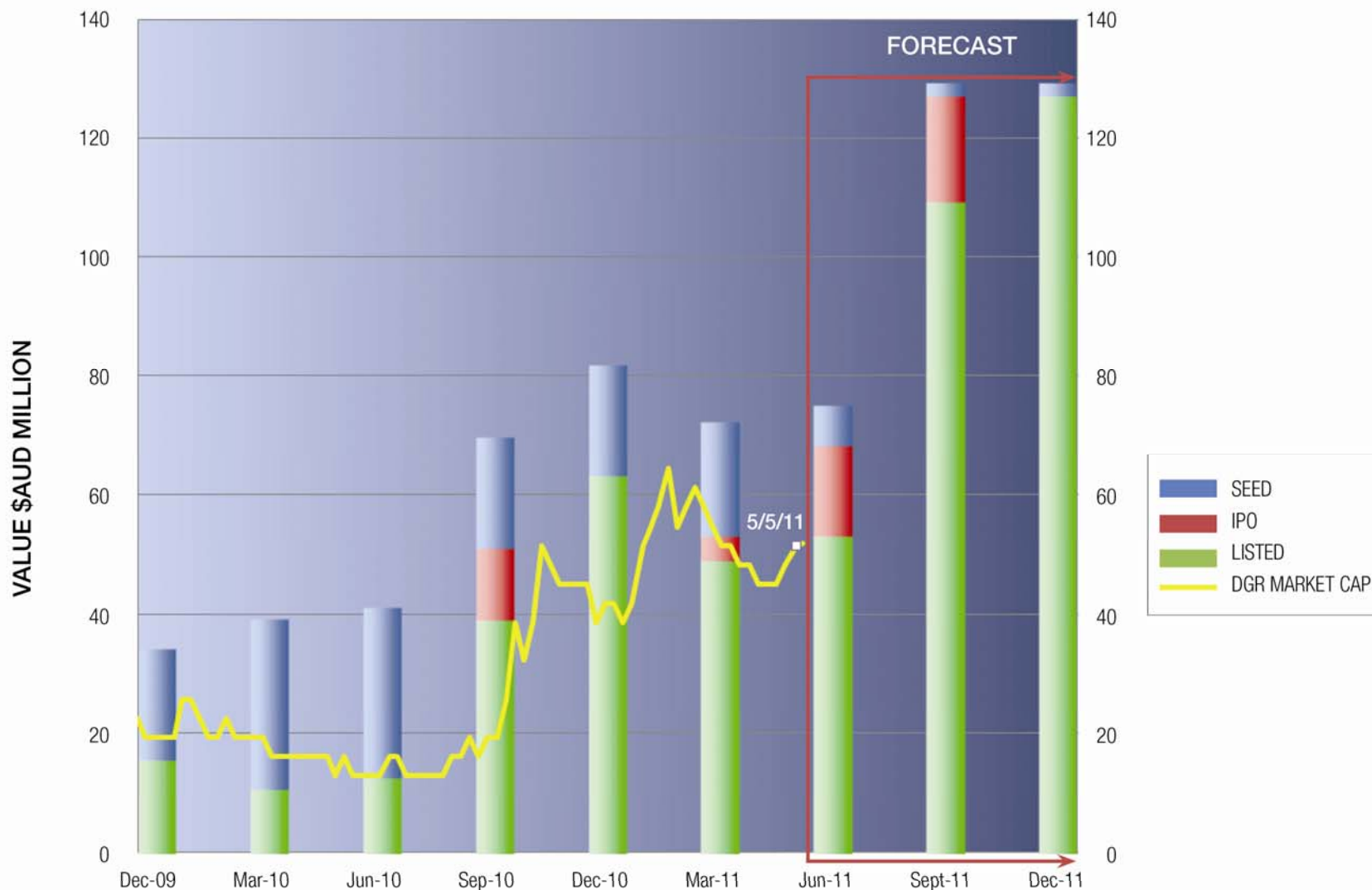


# GROWTH PIPELINE



D'Aguiar issued capital 324 million shares  
 6 million options  
 Market cap at \$0.16: \$51.84 million  
 Total listed assets: \$53.3 million

# BUILDING VALUE FOR SHAREHOLDERS



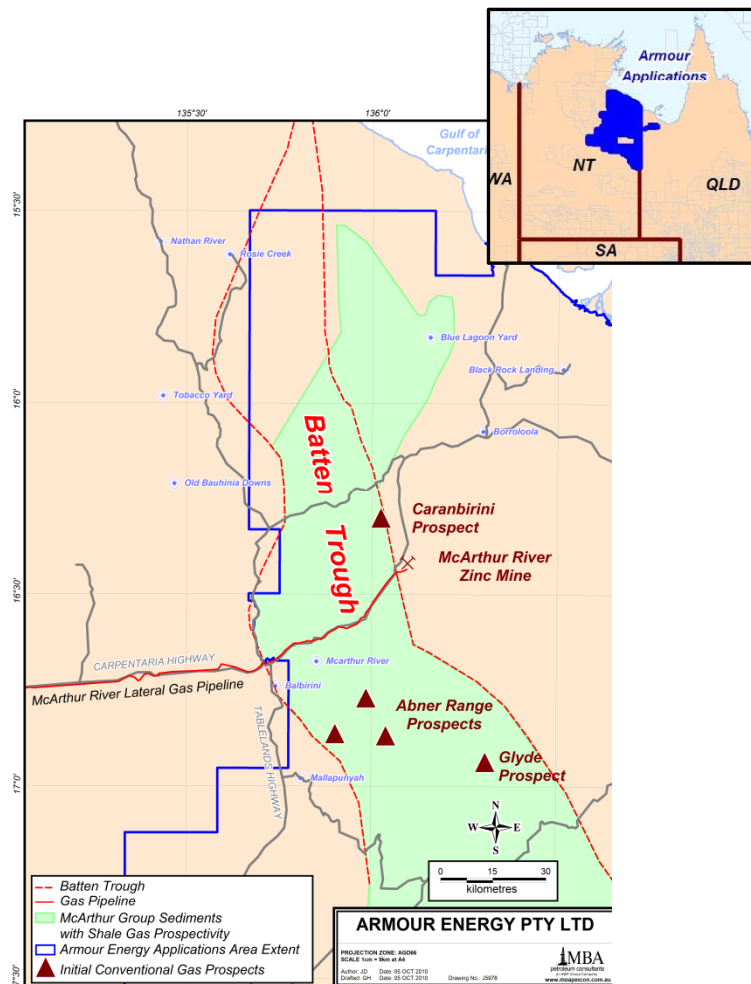
Forecast based on planned capital raising and unchanging value of existing assets.

# A NEW REGIONAL GAS GIANT

HISTORIC GAS SHOWS, BUT NO 1980s MARKET FOR



Gas flow from Amoco mineral exploration borehole, Glyde River 1979.

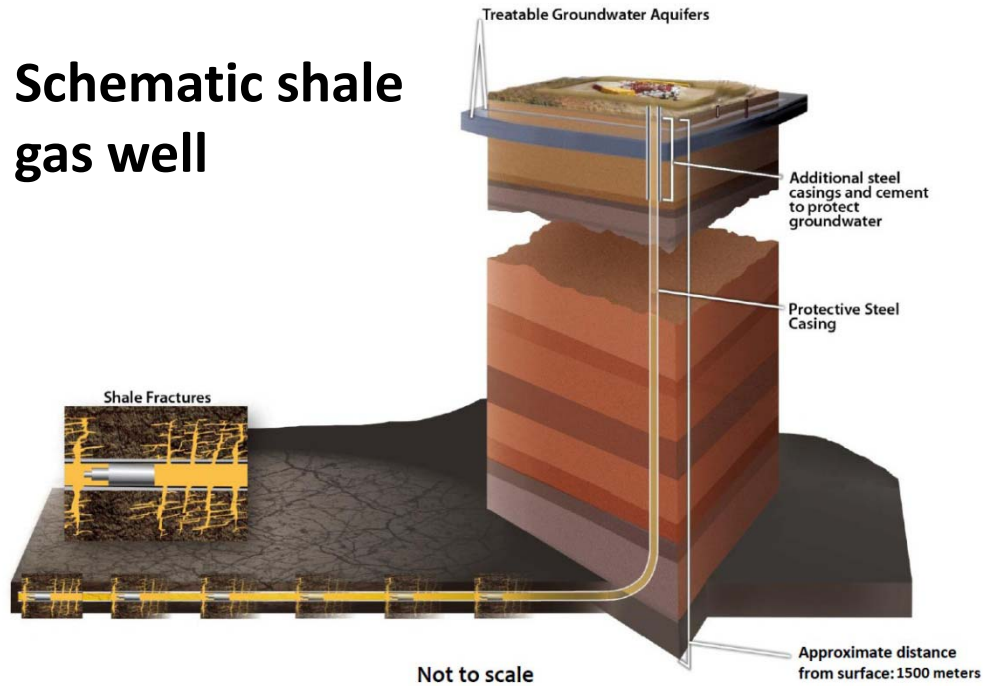


Oily and Gassy source rocks over 100m thick in the Batten Trough

# 2010 - NEW TECHNOLOGY, NEW MARKETS...



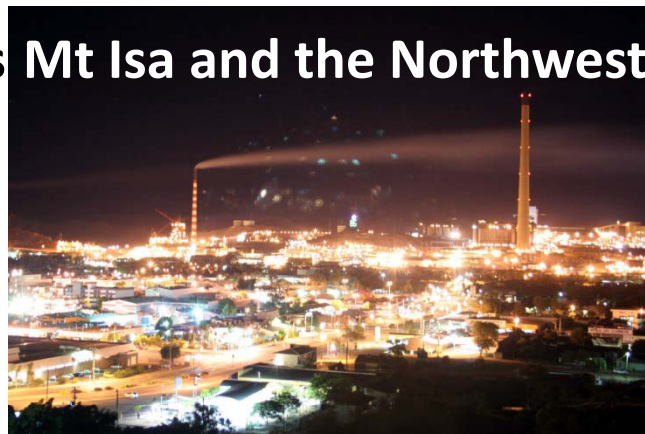
## Schematic shale gas well



## Development and production



## New markets Mt Isa and the Northwest



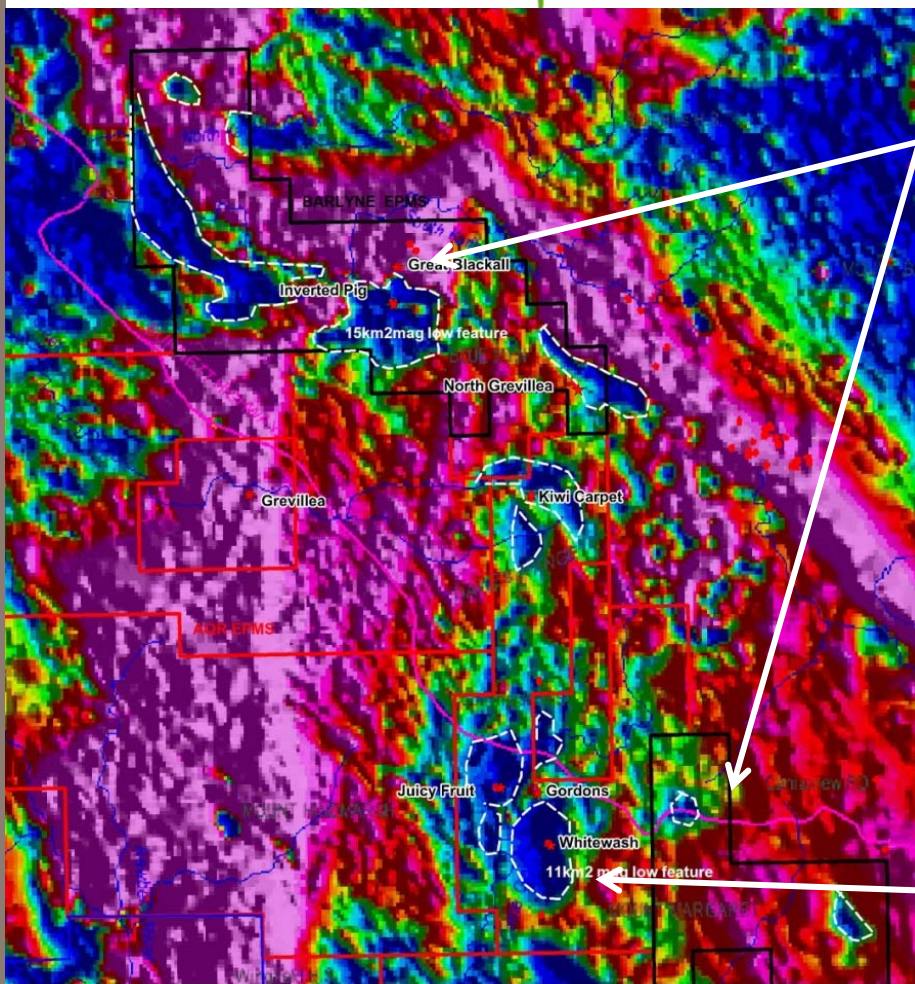
## Export opportunities



...A NEW GAS PROVINCE WITH A 40TCF TARGET

# A RERATED Mo Cu MARKET, REVISED PORPHYRY MODELS, A NEW PROVINCE

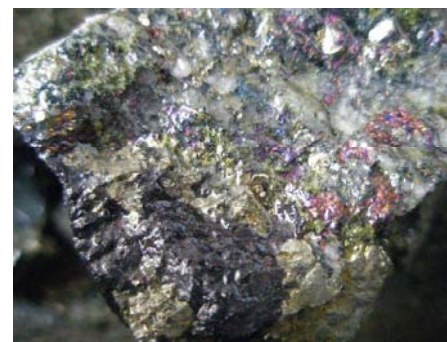
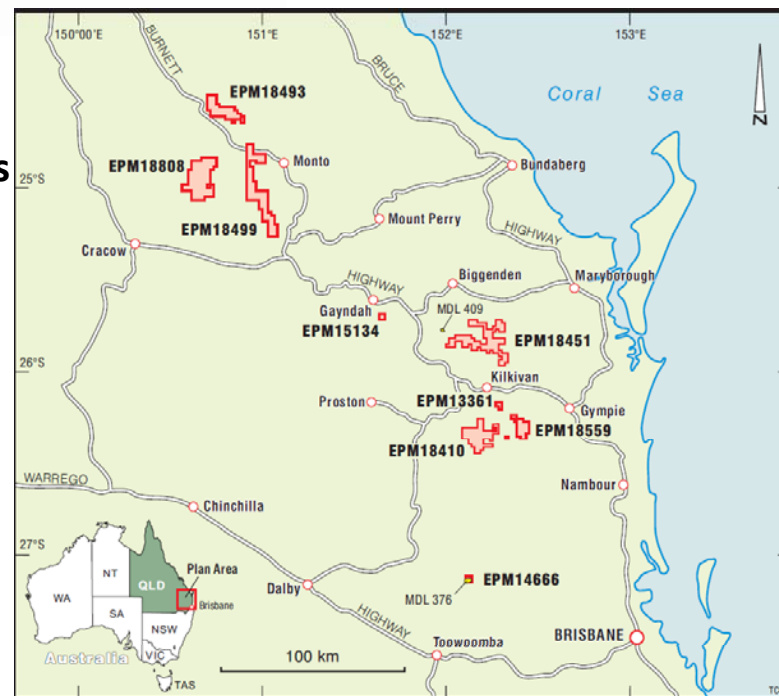
Exciting new high tonnage porphyry copper-gold-molybdenum targets in Queensland.



Archer Resources

AQR

Great Blackall EPM 18493 on Magnetic Imagery



Mineralisation from Calgoa

# A NEW IRON AND TITANIUM PROVINCE

## RIDGE EXPLORATION

- An exclusive new province > 5,000 km<sup>2</sup>
- Existing infrastructure – proximity to rail and 3 ports
- Up to 50% Iron ore and 31% Titanium in results to date



ASX:DGR



**Titanium rich iron stone at Monogorilby  
31% TiO<sub>2</sub>**

**D'AGUILAR**  
GOLD LIMITED  
ACN 052 354 837

# DIVERSE, DEEP CAPITAL MARKETS



- DGR adapts to new market opportunities and moves quickly to secure them
- Capital is attracted to DGR's reliability as a one-stop shop:
  - securing large tenure
  - discovering new provinces
  - generating new major projects
  - developing successful growing companies
  - holding major stakes
- DGR has access to deep capital pools and a diverse mix of investors in diverse markets
- DGR offers a choice:
  - diverse project generation and investment
  - specific commodity and project focus

# Rapidly growing family, makes a bigger house



## DAGUILAR FPO

■ DGR.AX



ASX:DGR

**D'AGUILAR**  
GOLD LIMITED  
ACN 052 354 837

# CONTACTS

Nick Mather (CEO) 07 3303 0680  
**+61 (0) 417 880 448**  
[nmather@daguilar.com.au](mailto:nmather@daguilar.com.au)

www.daguilar.com.au  
**ASX : DGR**

ASX:DGR

**D'AGUILAR**  
GOLD LIMITED  
ACN 052 354 837