



7 November 2012

Company Announcements Office
ASX Limited
Level 4, 20 Bridge Street
Sydney NSW 2000

RE: Downer EDI 2012 Annual General Meeting

Please find attached a copy of the following documents related to the Annual General Meeting of Downer EDI Limited to be held at 11.00am today:

- Chairman's addresses to shareholders;
- Chief Executive Officer's report; and
- Annual General Meeting presentation.

Yours faithfully,

A handwritten signature in blue ink, appearing to read 'Peter Tompkins'.

Peter Tompkins
Company Secretary

**DOWNER GROUP ANNUAL GENERAL MEETING 2012
CHAIRMAN'S ADDRESS AND CHIEF EXECUTIVE OFFICER'S REPORT**

Chairman's Address, Mike Harding

Ladies and Gentlemen,

I am very pleased to report that Downer delivered a much improved financial performance in the 2012 financial year.

This is a welcome improvement for you, our shareholders, after the poor performances of recent years. I am also pleased for our workforce of more than 20,000 people who worked very hard during the year to achieve these results. However, it is only one year and we are all aware that we must continue to build on the improvement achieved this year and deliver consistently in the years ahead.

Your Chief Executive Officer, Grant Fenn, will soon outline the highlights of our financial and operational performance in his report to shareholders.

The health and safety of our people is paramount at Downer and while, compared with our peers, incidents and injuries remain low as a percentage of hours worked, we have suffered three workplace fatalities over the past 18 months.

This is a profoundly disappointing aspect of Downer's performance. Two of the fatalities involved reversing vehicles on road maintenance sites – one in Victoria and one in New Zealand. This is an industry-wide problem and we are working with the industry to address the issue. The Board has ensured that management is implementing initiatives to address the hazards associated with reversing vehicles on all our work sites.

The third fatality occurred when one of our most experienced drilling operators was struck by a compressed air hose on the Milford Road in New Zealand following a major rock slide. The incident is the subject of an ongoing investigation.

While we are entitled to be pleased with the improvement of this year's financial performance, I would like to mention a number of other notable achievements. As you can see from the people seated at the front of the room, the process of Board renewal has continued.

Lucio Di Bartolomeo will retire from the board at the end of this meeting and I would like to thank him for his outstanding contribution to Downer over the past six years. This includes his service as Chairman of the Remuneration Committee and being a key driver of Downer's sound governance culture. On behalf of the board, I wish Lucio all the best for the future.

Later in this meeting you will be asked to vote for the election of three Non-executive Directors who were appointed during the year – Phil Garling, Eve Howell and Kerry Sanderson. You will hear briefly from each of them before you vote on their election as part of the formal proceedings.

I note that if all the new directors are elected, three of Downer's seven Non-executive Directors will be women, significantly improving the gender balance on the board.

Women constitute about 11 per cent of the total Downer workforce, which is comparable with other companies operating in the engineering, mining and infrastructure sectors. We recognise the benefits of increasing the number of women working at Downer and our objectives for 2013 are outlined in our Annual Report.

Ladies and gentlemen, the board believes that the capability of Downer's senior management team, under the leadership of Grant Fenn, has continued to strengthen this year and there is now a strong performance and business culture across the Group. The executive team has made significant progress addressing the problems of the past as well as preparing the company for the future.

This includes making substantial progress on the Waratah Train Project. It is clear that the manufacturing process in both China and Australia has improved significantly. There is plenty of work still to be done, but there are now 18 Waratah trains available for passenger service on the Sydney network and they are performing very well. Grant will provide you with more details about the current status of the Waratah Train Project in his report.

The Board has made substantial changes to the executive remuneration structure in recent years and, while there are no major changes this year, we continue to listen to investors and other stakeholders. This year's Remuneration Report is once again very detailed and can be found in the Annual Report. Adoption of the Remuneration Report is item 3 on today's agenda, and I will answer any questions you may have on remuneration when we consider item 3 as part of the formal proceedings.

We have also made substantial improvements to our risk management processes in recent years and we are making good progress in standardising our approach to project management.

We continue to focus closely on tender assessment. This means, for example, that prospective new projects worth over \$30 million must be reviewed and approved by the Tender and Capital Committee chaired by the Chief Risk Officer and attended by the CEO and CFO. If the value exceeds \$250 million, or if there are special risk features, the project must be reviewed and approved by the Board Tender Risk Evaluation Committee.

Our improved risk and project management processes are also helping us to develop people with the right skills for Downer's future. This includes having project managers with appropriate skills to run the complex projects we deliver for our customers.

Risk and project management are the lifeblood of a company like Downer and getting them right will be a key foundation for our future success.

I would like to address a question that is frequently asked by shareholders.

When is Downer likely to resume paying dividends?

The Board's position is that we would like Downer to pay dividends as soon as it is appropriate, having regard to the company's performance, its balance sheet strength and its capacity to distribute franking credits. The Board will monitor these criteria closely during the year.

I now invite your Chief Executive Officer, Grant Fenn, to provide an update on the Group's operations before I return to discuss the items outlined in the Notice of Meeting.

Chief Executive Officer's Report, Grant Fenn

Thank you, Mike, and good morning everyone.

2012 was a much better year for Downer.

We reported a 22.5% increase in total revenue to \$8.5 billion for the 2012 financial year, including a contribution of around half a billion dollars from joint ventures. To put this into context, Downer's total revenue in 2010 was \$6 billion. So we have seen a 41% increase in revenue over the past two years. Our customers like the job we do and support us accordingly.

We reported underlying earnings before interest and tax of \$346.5 million, up 18.6% from the prior year, and underlying net profit after tax rose 17.4% to \$195.3 million. These are very good results that include the negative impacts from closing out a number of historic legacy issues.

Operating Cash Flow increased by 96.3% to \$364.5 million. This represents a 91% cash conversion to EBITDA, including \$93 million of net outflow relating to the Waratah Train Project. This was a very strong result reflecting the emphasis placed on working capital management by the business at all levels. Although, I must say that the cash result will be hard to replicate in the current environment.

At 30 June our work-in-hand was around \$20 billion, very similar to the position 12 months earlier. In practical terms, we deliver our work at an average of \$700 million per month. Importantly, we are working hard to get better sight of, and manage, our future revenue opportunities. This is increasingly important as the market becomes less certain and more difficult.

Following on from our good cash performance, our net debt at 30 June 2012 reduced by 25% and our gearing reduced by 6.9 percentage points. As you know, our balance sheet has been the subject of much discussion and speculation over the past year. Our reported results show that the balance sheet continues to strengthen.

On the capital management front, there has been a significant amount of refinancing during the year by our Treasury team with only a modest level required over the next 12 months. Overall, our liquidity remains strong.

I would now like to highlight some of the key operational achievements that were instrumental in driving the 2012 results.

First, we have made substantial progress on the Waratah Train Project. Quality standards are being met in China and the production rate has increased to three trains per month. We are also meeting our production targets in Cardiff.

There are now 18 Waratah trains available for passenger service on the Sydney network. We are scheduled to deliver the 23rd train to RailCorp by Christmas and the 78th train in mid-2014. Very importantly, the trains are performing well in service.

We are a long way down the track, so to speak, on the total Waratah program. We have placed over 95% of the purchase orders with suppliers. Around 75% of the interior fitout components and 70% of major supply components have been delivered. We have manufactured 65% of the train car bodies and almost 60% of the total fitout task is now complete. I was in China last month and saw the 39th train (the half way mark for train deliveries) leave the CRC factory destined for Australia. So, 50% of the trains are either in Australia or are being shipped here as I speak, and we are approaching the 40% mark for production at Cardiff.

As far as funding the Waratah project is concerned, we refinanced our \$260 million Waratah bonding facility and Reliance Rail was restructured with no equity contribution from Downer. Reliance Rail has now drawn \$228 million of its \$357 committed bank debt.

I am very pleased to say that while the Waratah project remains challenging and complex it now represents a substantially lower risk to the business. There has been so much improvement in the Waratah project delivery that our Cardiff operation recently won the Hunter Manufacturing Award for Excellence in Manufacturing Process.

During the year we reshaped our business portfolio substantially. We now have three Divisions that are leaders in their markets. They have scale, a critical mass of capable management and a service offering that is unparalleled. The joining together of our Works, Engineering and New Zealand business into Downer Infrastructure is providing new opportunities, better performance and a safer work place.

I will now move on to the performance of each of our Divisions.

Downer Mining's result was very strong. Importantly, our Mining division is delivering on the capital we have allocated to it. Downer Mining's ROFE, the return on funds employed, is now over 20%. What is clear is that Downer Mining's customers see them as highly competent and valuable. This will be a key differentiator as things get a little tighter on the demand side. This is a good business that will continue to deliver in the 2013 financial year.

In Australia, Downer Infrastructure improved its EBIT performance despite a material drag from some loss-making legacy contracts. Revenue generation has remained strong and growing off the back of a lot of focus from the team. The Eastern region was the stand out performer for the year gone by. The business is investing in its asset management platform and the signs are promising.

In New Zealand, Downer Infrastructure has had a marked rebound in fortunes. Its cost reduction and efficiency measures over the past couple of years are now paying dividends as they win new work. This improvement trend should continue as the New Zealand business has had a number of material wins and has secured a high proportion of its revenue for the 2013 financial year.

Downer Rail's earnings were slightly up on last year, although positive contract closeouts contributed to that performance. Locomotive demand was significantly down from the prior year, although we did secure contracts with BHP Iron Ore, Fortescue Metals Group and TasRail.

Importantly we signed a new agreement with EMD, our locomotive technology partner, which will provide a sustainable business model into the future. Manufacturing locomotives in Australia is simply not price competitive, so our freight business will now concentrate on sales, after-sale service, maintenance and overhaul.

In the rail passenger market, we continue to manufacture rolling stock and are currently in production on vehicles for Queensland Rail, WA PTA and, of course, Waratah.

There is a significant efficiency drive across each of the Divisions to help offset the changing market and to improve our competitive position.

As the Chairman has already noted, a profoundly disappointing aspect of our performance was the three workplace fatalities on road maintenance sites in Victoria and New Zealand. Hazards around plant and people interfaces have caused numerous deaths over the past decade in the road services industry and frankly it has been a real blight on the whole industry. We have implemented initiatives to address hazards associated with reversing vehicles on our work sites across Australia and New Zealand and we continue to work on safer ways of doing our job.

A key point here is that we must concentrate on our critical risks even if our injury statistics might tell us we are doing very well compared with our peers. Our critical risk or "Cardinal Rules" program is so important and it is having a real impact on how we go about our work.

Ladies and gentlemen, at our Full Year Results in August we noted an increasing level of uncertainty around the level and timing of Government and private sector investment in infrastructure in both Australia and New Zealand and we have, over the past two months, seen a number of prospective projects deferred. We do anticipate that competition for available work will increase, presenting challenges but also opportunities.

Against this background, Downer's work-in-hand remains at solid levels and our industry-leading businesses are well placed to capitalise on the pipeline of opportunities in the markets in which we operate. As I said earlier, our three Divisions are leaders in their sectors, with substantial scale and capability, and they continue to deliver for our customers. Now is the time that we can present real value to our customers.

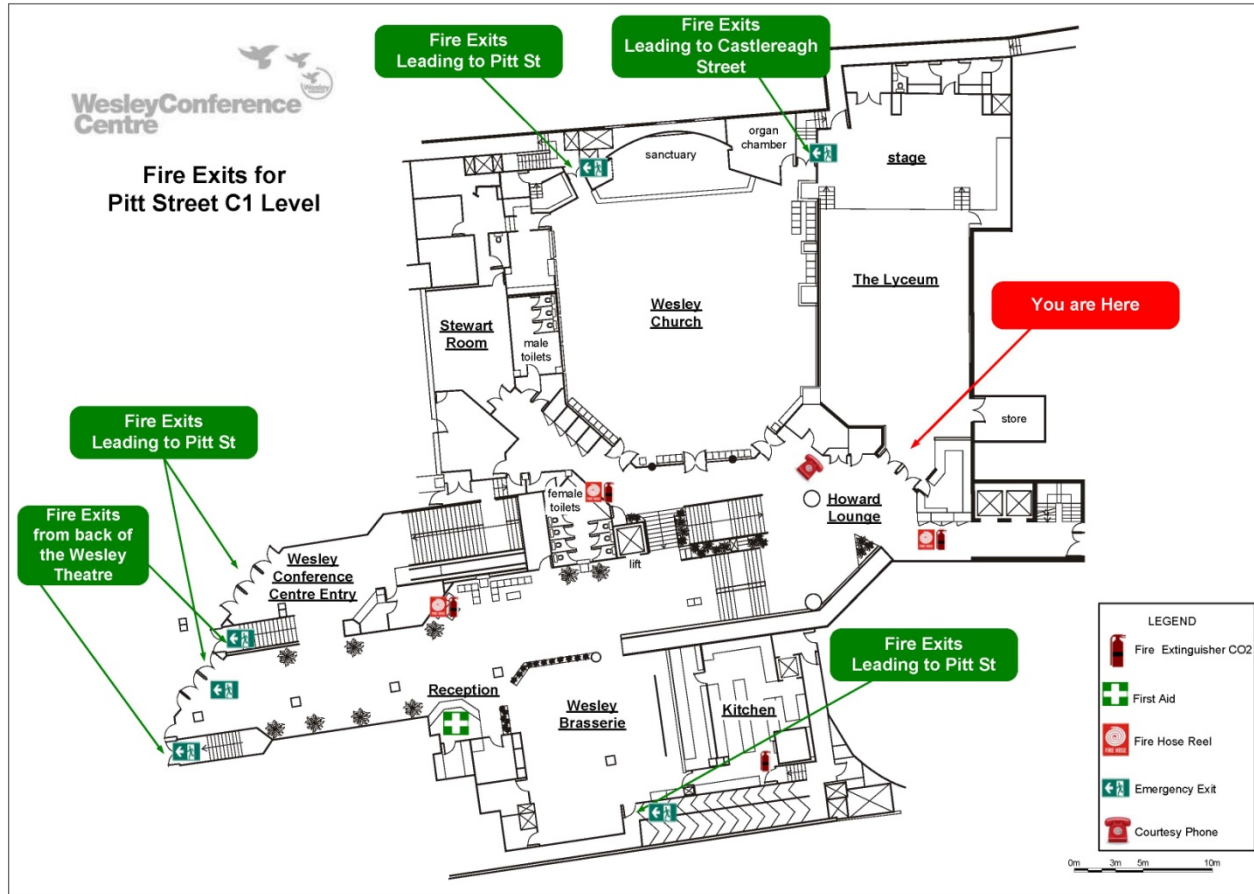
Our results in the first three months of the financial year have been to plan. Consequently, at this point, despite future market uncertainties, we maintain our guidance for the full year result of earnings before interest and tax of \$370 million and net profit after tax of \$210 million.

Ladies and gentlemen thank you very much, and I would now like to hand the meeting back to the Chairman.

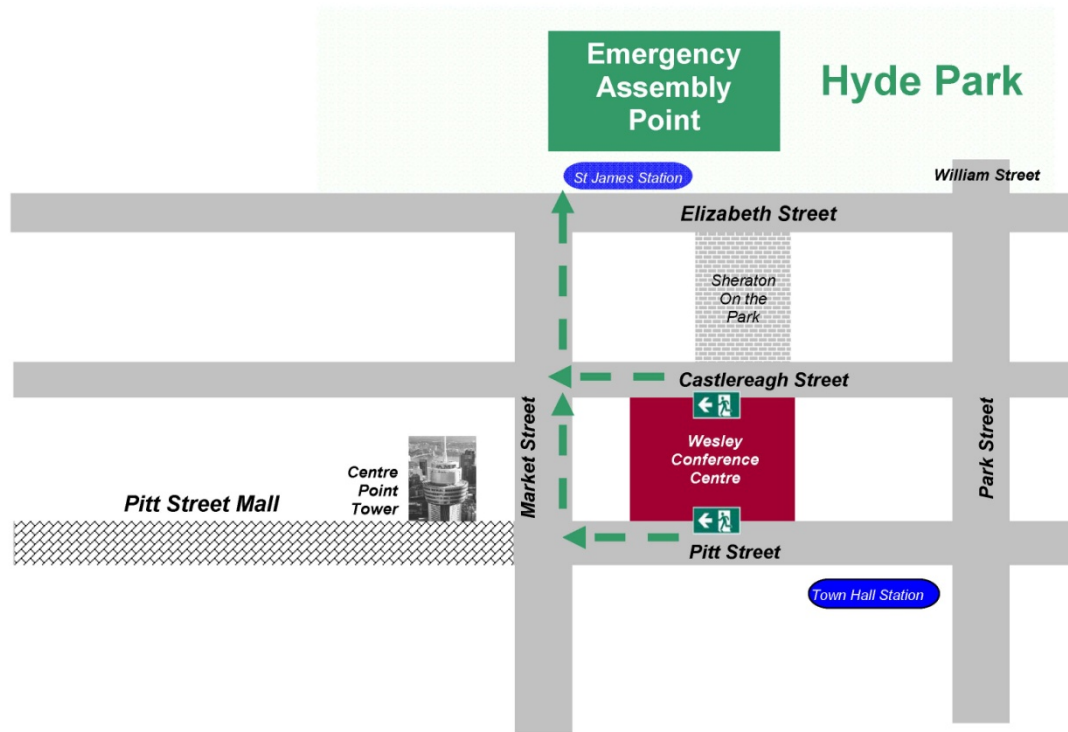
Downer Group Annual General Meeting

7 November 2012

Emergency exits



Emergency assembly point



Please Note That This Map is not To Scale.

Downer Group Annual General Meeting

Chairman's address

- Much improved financial performance
- Three workplace fatalities – profoundly disappointing
- Board renewal
- Strong performance and business culture
- Substantial progress on Waratah Train Project
- Continuing improvements to Risk Management

CEO and Managing Director's Report

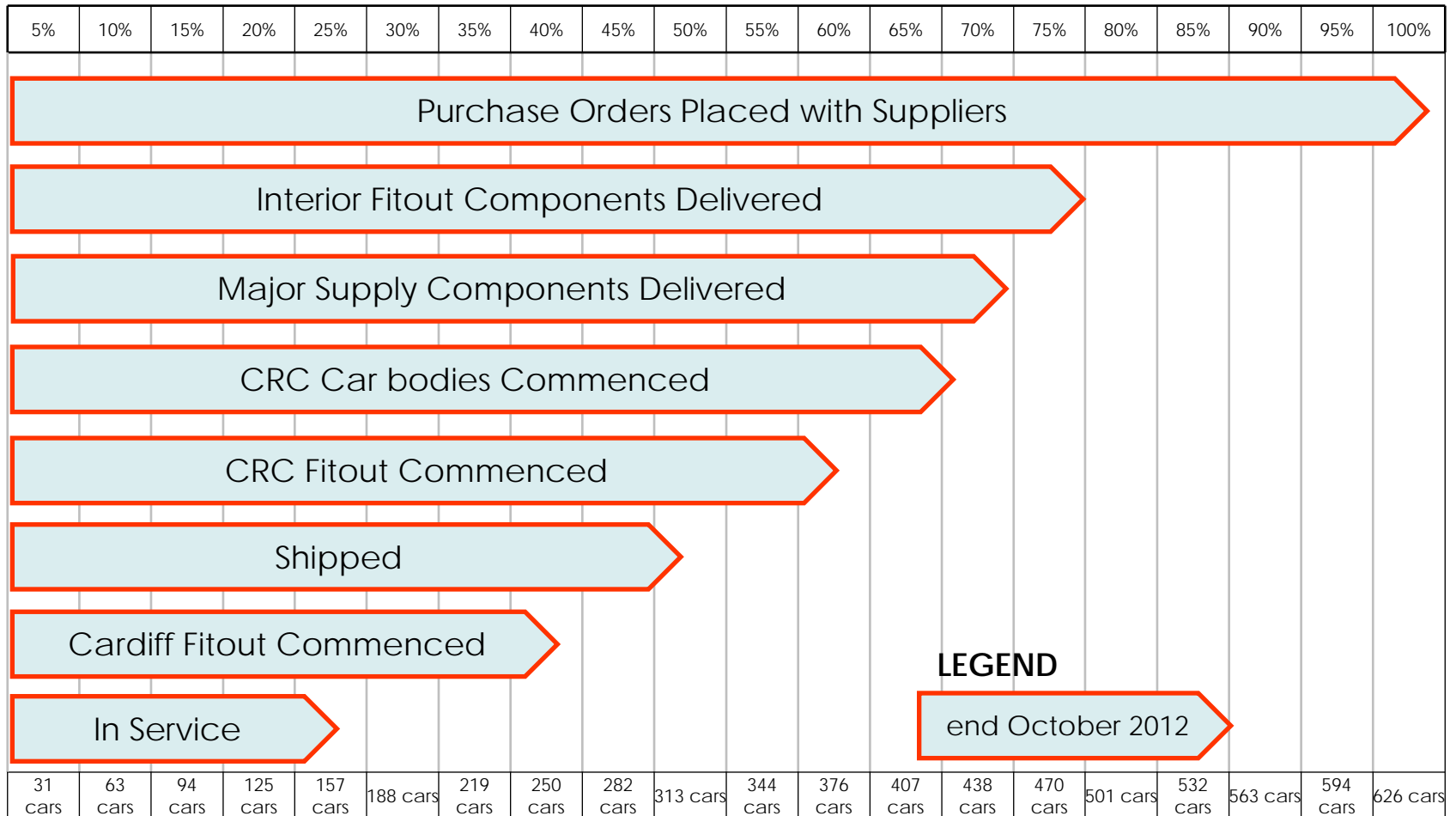
Financial overview

- Total revenue up 22.5% to \$8.5 billion
- Underlying EBIT up 18.6% to \$346.5 million
- Underlying NPAT up 17.4% to \$195.3 million
- Operating cash flow up 96.3% to \$364.5 million
- Work-in-hand \$20 billion
- Net debt reduced by 25.1%
- Gearing reduced by 6.9 percentage points

Waratah Train Project

- Substantial progress:
 - three trains per month being produced in China
 - 18 trains now available for passenger service, 19th presented to RailCorp for Practical Completion
 - on track for 23 trains by Christmas, 78 trains by mid-2014
 - trains performing very well

Status Outline – end October 2012



Waratah Train Project continued

- Funding:
 - \$260 million Waratah bonding facility refinanced
 - Reliance Rail restructured with no equity contribution from Downer
 - Reliance Rail has now drawn down \$228 million of its \$357 million committed bank debt
- The Waratah Train Project now represents a substantially lower risk to the business

Reshaped portfolio

- Three Divisions that are leaders in their markets:
 - Downer Mining
 - Downer Infrastructure
 - Downer Rail

Downer Mining



- Very strong result
- Delivering on the capital allocated to it
- ROFE over 20%
- A good business that will continue to deliver in FY2013

Downer Infrastructure



- Improved EBIT in Australia despite legacy contracts
- Eastern region the stand out performer in Australia
- Rebound in New Zealand performance
- High proportion of NZ's FY2013 revenue secured

Downer Rail



- Locomotive demand down significantly but new contracts with BHPIO, FMG, TasRail
- New agreement with EMD will provide sustainable business model for future
- Passenger – QR, WAPTA, Waratah

CEO and Managing Director's Report

Outlook

- Increasing level of uncertainty
- Competition for available work will increase, presenting challenges but also opportunities
- Downer's work-in-hand remains at solid levels
- Our industry-leading businesses are well placed to capitalise on the pipeline of opportunities
- FY13 guidance maintained

Resolutions

Item 1

To consider and receive the Financial Report, the Directors' Report and the Independent Auditor's Report of Downer for the year ended 30 June 2012.

Item 2 Election of Directors

- Item 2a – Phil Garling
- Item 2b – Eve Howell
- Item 2c – Kerry Sanderson

Item 2a

To consider and, if thought fit, pass the following ordinary resolution:

“That Mr PS Garling, who was appointed as a Non-executive Director of the Company on 24 November 2011 and, in accordance with Rule 3.3 of the Company’s Constitution and being eligible, offers himself for election, is elected as Non-executive Director of Downer.”

Item 2a

Phil Garling offers himself for election as a Non-executive Director in accordance with the Company's Constitution



Item 2a – Proxies

| | Voted | % |
|---------------|-------------|------|
| FOR | 329,276,013 | 99.2 |
| AGAINST | 1,730,103 | 0.5 |
| ABSTAIN | 412,493 | n/a |
| OPEN – USABLE | 994,850 | 0.3 |

Item 2b

To consider, and if thought fit, pass the following ordinary resolution:

“That Ms E A Howell, who was appointed as a Non-executive Director of the Company on 16 January 2012 and, in accordance with Rule 3.3 of the Company’s Constitution and being eligible, offers herself for election, is elected as Non-executive Director of Downer.”

Item 2b

Eve Howell offers herself for election as a Non-executive Director in accordance with the Company's Constitution



Item 2b – Proxies

| | Voted | % |
|---------------|-------------|------|
| FOR | 328,899,162 | 99.1 |
| AGAINST | 2,123,275 | 0.6 |
| ABSTAIN | 385,568 | n/a |
| OPEN – USABLE | 997,152 | 0.3 |

Item 2c

To consider and, if thought fit, pass the following ordinary resolution:

“That Ms KG Sanderson AO, who was appointed as a Non-executive Director of the Company on 16 January 2012 and, in accordance with Rule 3.3 of the Company’s Constitution and being eligible, offers herself for election, is elected as Non-executive Director of Downer.”

Item 2c

Kerry Sanderson AO offers himself for election as a Non-executive Director in accordance with the Company's Constitution



Item 2c – Proxies

| | Voted | % |
|---------------|-------------|------|
| FOR | 328,870,310 | 99.1 |
| AGAINST | 2,153,132 | 0.6 |
| ABSTAIN | 384,350 | n/a |
| OPEN – USABLE | 997,366 | 0.3 |

Item 3

To consider and, if thought fit, pass the following ordinary resolution:

“That the Remuneration Report for the year ended 30 June 2012 be adopted.”

Item 3 – Proxies

| | Voted | % |
|--------------------|-------------|------|
| FOR | 308,567,441 | 92.9 |
| AGAINST | 22,518,836 | 6.8 |
| ABSTAIN | 391,010 | n/a |
| OPEN – USABLE | 932,130 | 0.3 |
| OPEN – CONDITIONAL | 584 | 0.0 |

Notes:

- This resolution is advisory only and does not bind Downer or the Directors.
- The Directors will consider the outcome of the vote and comments made by shareholders on the Remuneration Report at the meeting when reviewing Downer’s remuneration policies.
- If 25% or more of votes that are cast are voted against this resolution and at the 2013 Annual General Meeting 25% or more of the votes cast are also against the adoption of the Remuneration Report, shareholders will be required to vote at the 2013 Annual General Meeting on a resolution that another meeting be held within 90 days at which all of Downer’s directors (other than the Managing Director and Chief Executive Officer) must stand for re-election.
- A vote on this resolution must not be cast by or on behalf of a member of the key management personnel of the company, details of whose remuneration are included in the Remuneration Report (KMP), or by any of their closely related parties (such as certain of their family members, dependents and companies they control). However, this does not prevent KMPs or any of their closely related parties from voting as a proxy for a person who is not a member of the KMP in accordance with a direction as to how the proxy is to vote on this resolution.

Item 4

To consider and, if thought fit, pass the following ordinary resolution:

“That approval is given to the grant of restricted shares as the Managing Director’s long-term incentive for 2013 on the basis described in the Explanatory Memorandum to the Notice of Meeting.”

Item 4 – Proxies

| | Voted | % |
|--------------------|-------------|------|
| FOR | 308,578,099 | 92.9 |
| AGAINST | 22,600,191 | 6.8 |
| ABSTAIN | 313,062 | n/a |
| OPEN – USABLE | 921,527 | 0.3 |
| OPEN – CONDITIONAL | 584 | 0.0 |

Notes:

•A member of the KMP for the Downer Group and their closely related parties must not vote as proxy on this resolution unless the proxy appointment specifies the way the proxy is to vote on the resolution. However, the Chairman of the meeting may vote an undirected proxy if the proxy appointment expressly authorises the Chairman to exercise the proxy even if the resolution is connected directly or indirectly with the remuneration of a member of KMP for the Downer Group.

Poll

Please join us in the
foyer for refreshments

Disclaimer

Reliance on third party information

This presentation may contain information that has been derived from publicly available sources that have not been independently verified. No representation or warranty is made as to the accuracy, completeness or reliability of the information. No responsibility, warranty or liability is accepted by the Company, its officers, employees, agents or contractors for any errors, misstatements in or omissions from this Presentation.

Presentation is a summary only

This Presentation is information in a summary form only and does not purport to be complete. It should be read in conjunction with the Company's 2011 financial report. Any information or opinions expressed in this Presentation are subject to change without notice and the Company is not under any obligation to update or keep current the information contained within this Presentation.

Not investment advice

This Presentation is not intended and should not be considered to be the giving of investment advice by the Company or any of its shareholders, directors, officers, agents, employees or advisers. The information provided in this Presentation has been prepared without taking into account the recipient's investment objectives, financial circumstances or particular needs. Each party to whom this Presentation is made available must make its own independent assessment of the Company after making such investigations and taking such advice as may be deemed necessary.

No offer of securities

Nothing in this Presentation should be construed as either an offer to sell or a solicitation of an offer to buy or sell Company securities in any jurisdiction.

Forward looking statements

This Presentation may include forward-looking statements. Although the Company believes the expectations expressed in such forward-looking statements are based on reasonable assumptions, these statements are not guarantees or predictions of future performance, and involve both known and unknown risks, uncertainties and other factors, many of which are beyond the Company's control. As a result, actual results or developments may differ materially from those expressed in the statements contained in this Presentation. Investors are cautioned that statements contained in this Presentation are not guarantees or projections of future performance and actual results or developments may differ materially from those projected in forward-looking statements.

No liability

To the maximum extent permitted by law, neither the Company nor its related bodies corporate, directors, employees or agents, nor any other person, accepts any liability, including without limitation any liability arising from fault or negligence, for any direct, indirect or consequential loss arising from the use of this Presentation or its contents or otherwise arising in connection with it.

Downer Group Annual General Meeting

7 November 2012