

ASX ANNOUNCEMENT

15 July 2011

ASX Code: DTM

Investment Data

Shares on issue	119.4m
Listed options	15.6m
Unlisted options	5m

Shareholders

Top 20 Hold **38.8%**

Key Projects / Metals

- Unicorn Porphyry Mo-Cu-Ag
- Morgan Porphyry Mo-Ag-Au
- Mountain View Lode – Au

Mo – Molybdenum

Cu – Copper

Au – Gold

Ag – Silver

Board & Management

Chairman

Mr Chris Bain

MD and CEO

Mr Lindsay Ward

Executive Directors

Mr Dean Turnbull
Manager – Exploration

Non-Executive Directors

Mr Stephen Poke
Mr Richard Udovenya

Contact Details

Dart Mining NL
Level 2
395 Collins Street
Melbourne VIC 3000
Australia

Mr Lindsay Ward

Phone: +61 (0)3 9620 0033

Email: lward@westnet.com.au

Visit our webpage:

www.dartmining.com.au

DART MINING MEETS WITH CORRYONG COMMUNITY ABOUT UNICORN PROJECT

Dart Mining NL (ASX: DTM) held a community meeting in Corryong on the evening of Wednesday 13 July 2011 to inform the local community about Dart Mining's progress towards a maiden JORC resource which may result in a mine being established at Mount Unicorn within the next five years.

"About 110 local residents (10% of the population of Corryong) including Towong Shire Mayor and the CEO met with Dart Mining representatives, including Chairman Chris Bain and me at the Corryong Sporting Club," Dart Mining's Managing Director Lindsay Ward said.

"We were very pleased that such a large proportion of the community made the effort to attend the Community Meeting and listen to a presentation on the possible implications to Corryong district, should a mine proceed at Mt Unicorn," Mr Ward added.

"Questioning was lively and the Corryong community was overwhelmingly supportive of the concept of a mine at Mt Unicorn subject to the project receiving the necessary approvals and Dart Mining continuing to meet with and consider community concerns," Mr Ward went on to say.

Key Highlights of the presentation were

- Any decision to mine is three years away
- Annual production would be around 5.5 million tonnes per year
- Approximately 30,000 tonnes of concentrate would be produced each year
- Concentrate would be trucked to Albury and then by train to the Port of Melbourne
- Approximately 2 container trucks per day would be added to existing traffic through Corryong
- Extensive community consultation will be carried out as part of the approvals process should a decision to mine being taken.

The detailed presentation provided to the Corryong Community is attached.

Molybdenum

Molybdenum is both a traditional and new age / future metal with unique characteristics. Its primary use is as an essential metal in the manufacture of steel where it adds strength, hardness and toughness as well as increasing steels resistance to corrosion. Molybdenum also has a range of chemical uses including acting as a catalyst to remove impurities, including sulphur, during crude oil production. Molybdenum is also used in the paint and plastics industry.

Molybdenum has a growing use in the renewable energy sector where it is used in the manufacture of solar panels and has a potential use as the electrode plate for the separation of hydrogen and oxygen to produce energy. Molybdenum is also used in nano technologies to make electrical goods smaller.

The world demand for Molybdenum is growing at approximately 5% per year. Molybdenum is traded on the LME and is currently priced at approximately \$US\$36,000 per tonne being approximately four times that of copper at approximately US\$8800 per tonne with silver at approximately US\$38 / oz.



DARTMININGNL

Potential for a world class Mo-Cu-Ag deposit in a new Australian mineral province

**Lindsay Ward
Managing Director**

**ASX : DTM
July 2011**



DISCLAIMER

The information contained in this document is disclosed to you by Dart Mining NL (ACN 119 904 880) (the "Company").

Nothing in this document shall form the basis of any contract or commitment, or constitutes investment, financial product, legal, tax or other advice. The information in this document does not take into account your investment objectives, financial situation or particular needs.

The Company has prepared this document and is not aware of any errors in this document, but does not make any recommendations or warranty, express or implied concerning the accuracy of any forward looking statements or the likelihood of achievement or reasonableness of any assumptions, forecasts, prospects or returns contained in the information. Such assumptions, forecasts, prospects or returns are by their nature subject to significant uncertainties and contingencies.

This document is intended to provide background information only and does not purport to make any recommendation upon which you may reasonably rely without taking further and more specific advice. Potential investors should make their own decision whether to purchase any share in the Company based on their own enquiries. Potential investors are advised to seek appropriate independent advice, if necessary, to determine the suitability of the investment. An investment in the Company should be considered speculative.

This document is not a prospectus or other disclosure document.



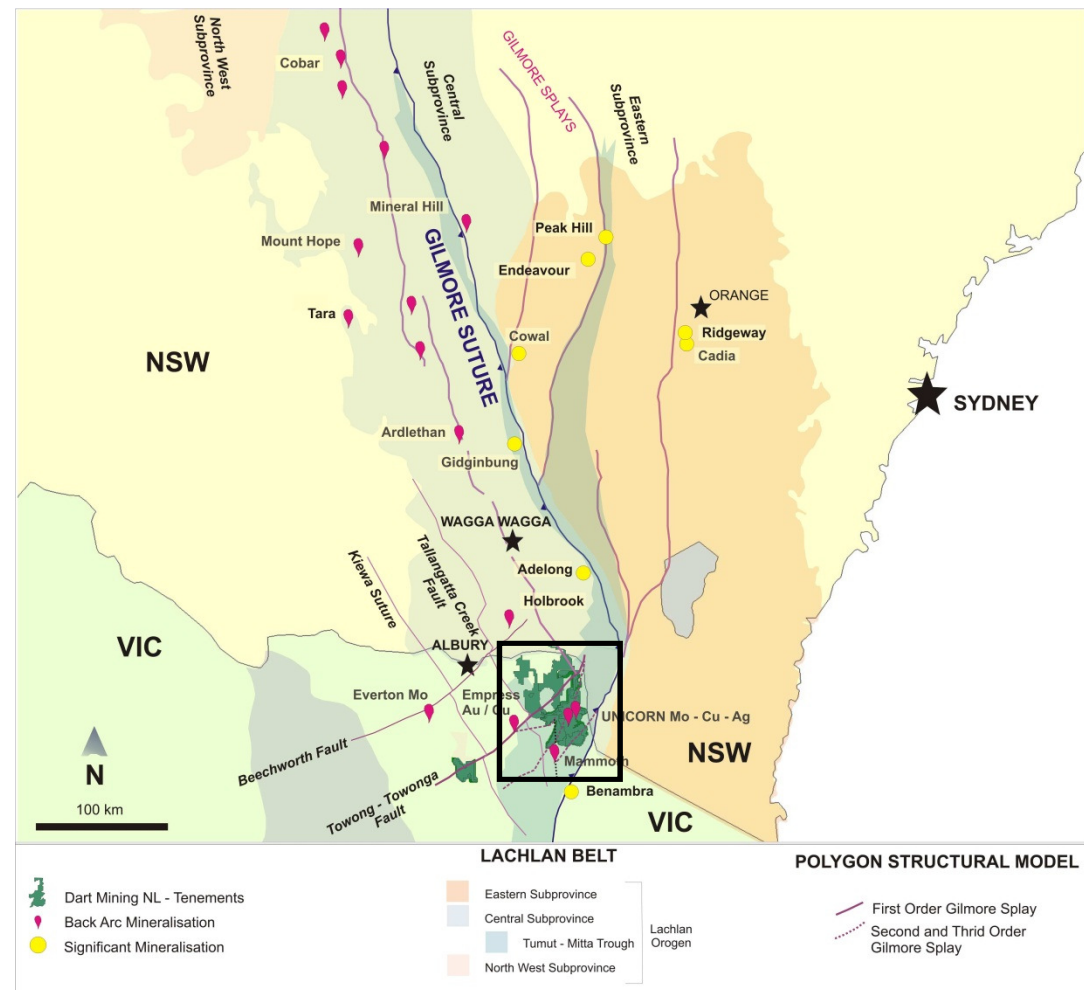
COMPANY OVERVIEW

- DTM has discovered a previously unknown Porphyry Province
 - ✓ “Dart Mineral Province” within Lachlan fold belt in Victoria
 - ✓ Similar structures host Cadia / Ridgeway / North Parkes in NSW
 - ✓ Proven occurrence of gold and base metals
- Principle Project – Unicorn (Mo - Cu - Ag)
 - ✓ Unicorn and the new province have world class potential
 - ✓ Similarities to giant Climax and Henderson molybdenum mines in US
 - ✓ Mineable grades intersected in all drilling programs
 - ✓ Current drill program intended to confirm maiden JORC resource
 - ✓ Mineralisation outcrops and is potentially suitable for open pit mining
- Other exploration projects confirm existence of mineralised porphyry clusters within DTM’s tenements



PROVEN STRUCTURAL SETTING

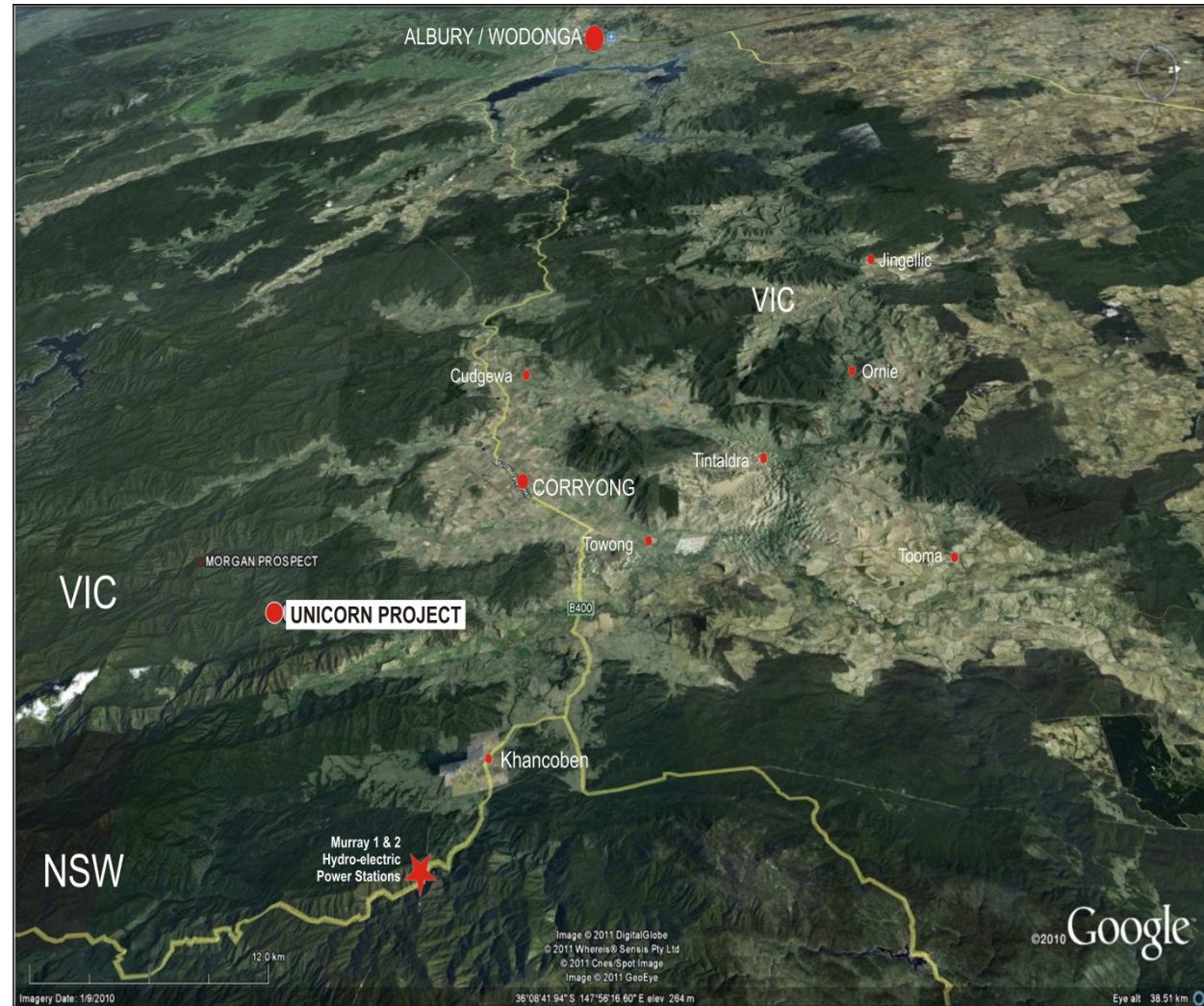
- Lachlan fold belt is a known host of major ore bodies
 - ✓ Cadia / Ridgeway / Nth Parkes in NSW
 - ✓ Benambra in Victoria
- Gilmore suture flexes across into Victoria with a series of splay faults
 - ✓ Proven mineralisation
 - ✓ Dart's tenements lie across this strategic structural zone





STRATEGIC LOCATION

- Established infrastructure to support mining
 - ✓ Water
 - ✓ Renewable Power
 - ✓ Corryong Airport
 - ✓ Sealed Roads
- Strong Victorian Government support
 - ✓ 3 drilling grants
 - ✓ Established town and supportive community



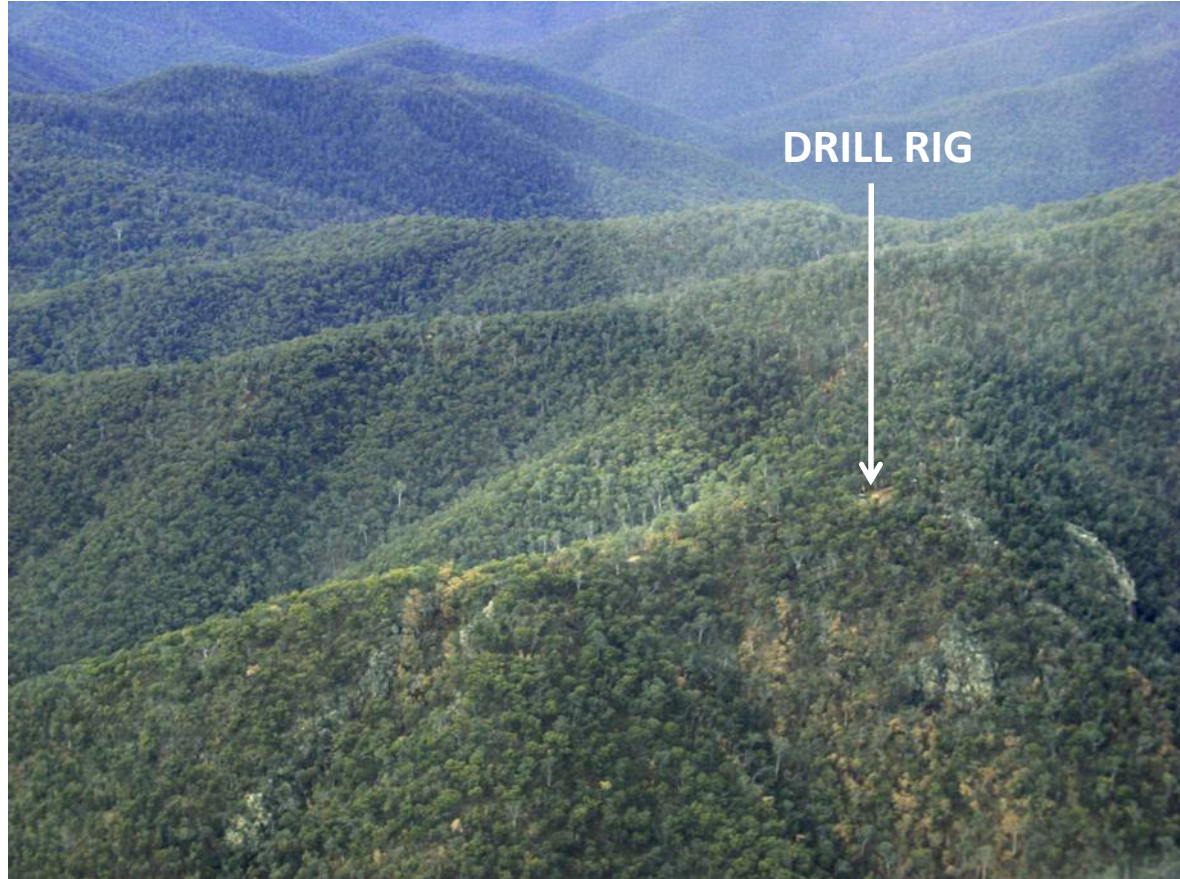


MOUNT UNICORN





UNICORN Mo-Cu-Ag PROJECT



Mineralisation outcrops at surface and extends below Valley floor. Exploration Target only quoted down to 350 metres. Valley floor 400 metres below surface.



UNICORN Mo-Cu-Ag PROJECT

CORE LOGGING



CORE CUTTING



NEW CORE PROCESSING FACILITY CARRYONG INNOVATION PARK

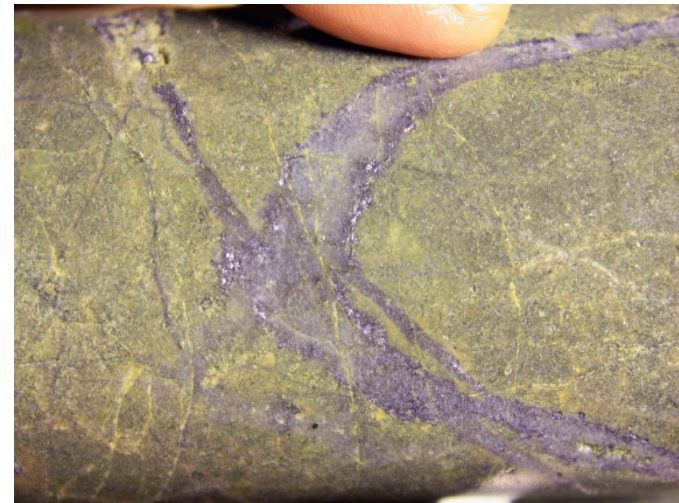




UNICORN Mo-Cu-Ag PROJECT

MOLYBDENITE

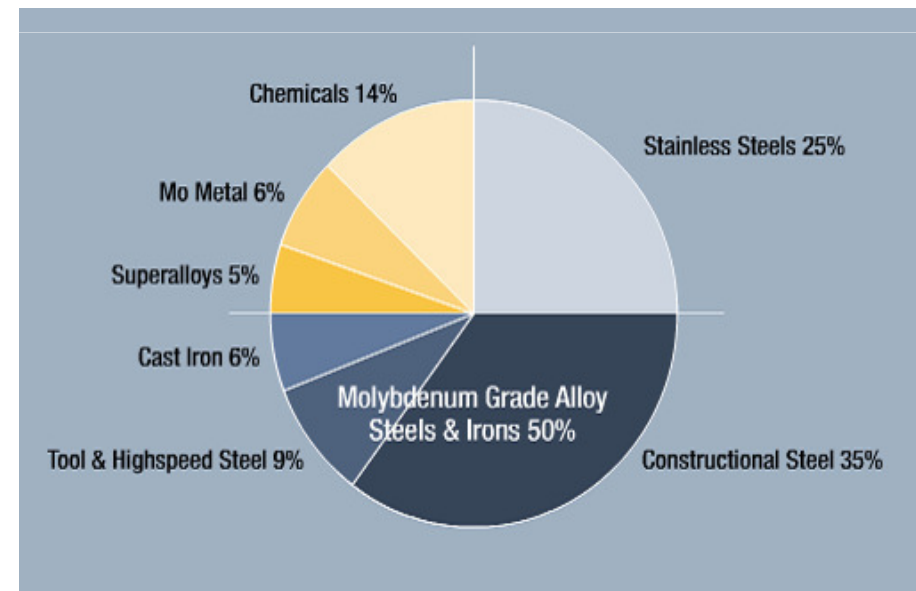
**A SOFT, GREY NON TOXIC MINERAL
WITH PROPERTIES UNLIKE ANY
OTHER ELEMENT**





MOLYBDENUM - INDUSTRIAL USES

- Adds strength, hardness and toughness to steel
- Increases corrosion resistance in petrochemical industry pipework
- Acts as a catalyst to remove sulphur / impurities from crude oil
- Growing importance in automotive and aerospace industries
- New age metal with strong potential for use in renewable energy
 - ✓ “Hydrogen economy”
 - ✓ Solar panels
- Nano technology applications
- Growing market (220,000 tpa) with shortages predicted
- Mo ~US\$36,000 per tonne, compared with Cu ~US\$8,800





UNICORN COMPARISON WITH ASX MOLY EXPLORERS PUBLISHED RESOURCES

Company	Market Cap (A\$ m's)	Resource Status	Tonnes (Million)	Mo Grade (%)	Cu Grade (%)	Ag Grade (g/t)	Access / Location
Moly Mines	\$313M	Spinifex Ridge Proven	450	0.05	0.08	1.3	Very Remote
Aussie Q	\$44M	Whitewash Inferred + Indicated	242	0.026	0.12	1.54	Remote
Zamia Metals	\$18M	Anthony Inferred	233	0.042	-	-	Remote
Dart Mining NL	\$7M	Unicorn Exploration Target**	60 – 70 (First 350m – open at depth)	0.05 - 0.06	0.08 - 0.10	4 - 5	Very Good

**** The potential quantity and grade of the Unicorn Exploration Target is conceptual in nature, there has been insufficient exploration to define a Mineral Resource and it is uncertain if further exploration will result in the determination of a Mineral Resource. The grade range indicated is based on grades from all diamond drilling intersecting the porphyry above an arbitrary depth of 350m below surface. A total intersection of some 1600m of diamond drilling has been utilised in the estimate of the grade range for the three metals. The tonnage range estimation is based on a modelled volume of porphyry intrusive (2.65 g/cm³ assumed specific gravity) constrained by surface mapping, geophysics and drilling. The volume range represents a geological boundary and does not include mineralised wall rock material at this time.**



CASE STUDY - ENDAKO MINE

- Thompson Creek Metals (TCM:TSX) own 75% of Endako Mine in British Columbia
- \$500 million mine expansion underway / Multi pit operation
- Proven and Probable – 311Mt at an average grade 0.046% Mo
- Measured plus Indicated – 88Mt at an average grade 0.034% Mo
- **Endako is pure Mo production - No value add from Cu or Ag**
- **Unicorn Exploration Target**** has a grade range of **0.05 – 0.06% Mo / 0.08 – 0.1% Cu / 4 – 5 g/t Ag** (**see previous slide for an explanation of Exploration Target and associated grade ranges).



DART'S MINERALISED PORPHYRY PIPELINE

"UNDER EXPLORED"

PROJECT	Regional Geochem	Soil Geochem	On Ground Mapping	Geophysics Aerial	Geophysics Ground	Drilling
Unicorn	✓	✓	✓	✓	✓	✓
Nth Mammoth	✓	x	✓	✓	✓	Limited
Morgan	✓	✓	x	✓	✓	Limited
Boebuck	✓	✓	x	✓	x	x
Bunroy	✓	✓	x	✓	x	x
Dart Pluton String	✓	x	x	✓	x	x
Dinner Creek	✓	x	x	✓	x	x
Six Other Targets	✓	x	x	✓	x	x

Colorado's Climax and Henderson primary Mo mines as well as other world wide mineralised porphyry's usually occur in clusters



SUMMARY

- DTM has discovered a new mineralised porphyry province with world class potential
 - ✓ “Climax style” is unique in Australia
 - ✓ Proven grassroots explorer and target generator
- Unicorn Project - Classic mineralised porphyry
 - ✓ Drilling underway – progressive results July / August
 - ✓ Maiden resource by early fourth quarter 2011
 - ✓ **Exploration Target grades superior to other ASX Moly explorers published resources + better than Endako Mine in BC**
 - ✓ Strong similarities to the primary Moly mines - Climax and Henderson
- Experienced Board with the required skills to take Unicorn from exploration target through to development
- Strong pipeline of additional porphyry targets



WHAT DOES THIS ALL MEAN

- Unicorn has the potential to become an operating mine
 - ✓ Initially open cut and then move to underground
- Time Line
 - ✓ 12 months further exploration and initial scoping study
 - ✓ 24 months approval process including extensive community consultation
 - ✓ 24 months construction of mine and processing plant
 - ✓ **Any potential mine is 5 years away from commencing operations**
- Open Cut Mine Water Management
 - ✓ Surface to valley floor is approximately 400 meters
 - ✓ Unicorn is “dry” which minimises water management issues
 - ✓ Acid mine drainage risk is relatively low due to style of mineralisation
 - ✓ Any open cut mine would be separated from drainage systems



WHAT DOES THIS ALL MEAN

- Two concentrates will be produced via flotation
 - ✓ Not an arsenic separation process
 - ✓ Rock is crushed and fed to a froth flotation process
 - ✓ Water tanks with air and additives bubbling through to separate metals
- Potential Production Statistics
 - ✓ Surface foot print - 350 meters x 300 meters
 - ✓ Approximately 5.5 million tonnes per year of ore
 - ✓ Produces approximately 30,000 tonnes of concentrate per year
 - ✓ One or two container trucks per day through Corryong to Albury
 - ✓ Container train from Albury to Port of Melbourne
- Relatively small operation – it is not a Pilbara scale of mine
- Minimum 20 year mine life



WHAT DOES THIS ALL MEAN

- Approval process will include extensive community consultation
 - ✓ Dart Mining / DSE / DPI / Council / Community
 - ✓ Native title / Flora and Fauna / Water Management / Noise and Dust Management / Community impact
- Buy local / employee local / live local
 - ✓ Construction would more than likely be camp based
 - ✓ Intent would be to base mine workforce locally
 - ✓ Preference for “locals” where it makes common sense to do so
 - ✓ Support local businesses where it makes common sense to do so
- Community Impact
 - ✓ Schools / housing / hospital / utilities / support services
 - ✓ Plenty of time to address these issues once decision to mine is made



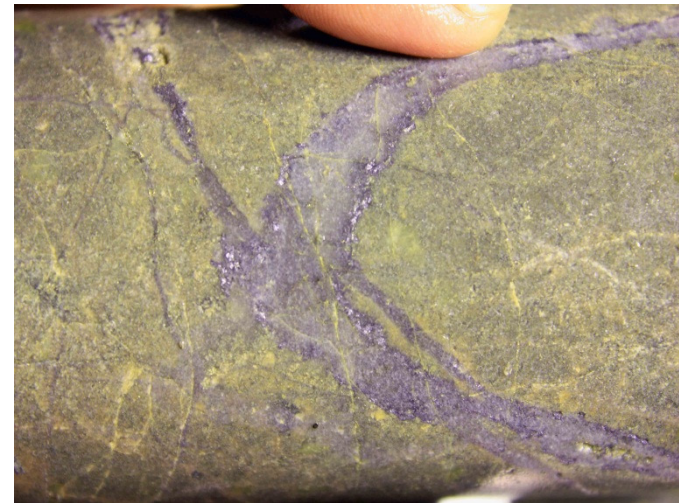
CONCLUSION

- Principle Project – Unicorn (Mo - Cu - Ag)
 - ✓ Unicorn and the Dart mineral province have world class potential
 - ✓ Mineralisation outcrops and is potentially suitable for open pit mining
- Any decision to mine is three years away
 - ✓ Now until June 2012: further exploration and scoping study
 - ✓ July 2012 - June 2014: approvals process / funding / detailed feasibility
 - ✓ July 2014 - June 2016: construction period
- Buy local / employee local / live local
 - ✓ Dart Mining will work closely with the community should a mine proceed
- Mining can co-exist with “PURE” Towong Shire image and tourism



THANK YOU

MOLYBDENITE
A SOFT, GREY NON TOXIC MINERAL
WITH PROPERTIES UNLIKE ANY
OTHER ELEMENT





DARTMININGNL

THANK YOU

Competent Person Statement

Information in this report that relates to Exploration Targets and exploration results are based on information compiled by Dean Turnbull B.App.Sc.(Geol) Hons. M. AIG. Mr Turnbull is a Director and full time employee of Dart Mining NL and has sufficient experience relevant to the style of mineralisation and type of deposits under consideration and to the activity undertaken. He is qualified as a competent person as defined in the 2004 Edition of the "Australasian Code for Reporting of Mineral Resources and Ore Reserves" (or "JORC Code"). Mr Turnbull has provided written consent to the inclusion of this information in the form and context in which it appears in this report.



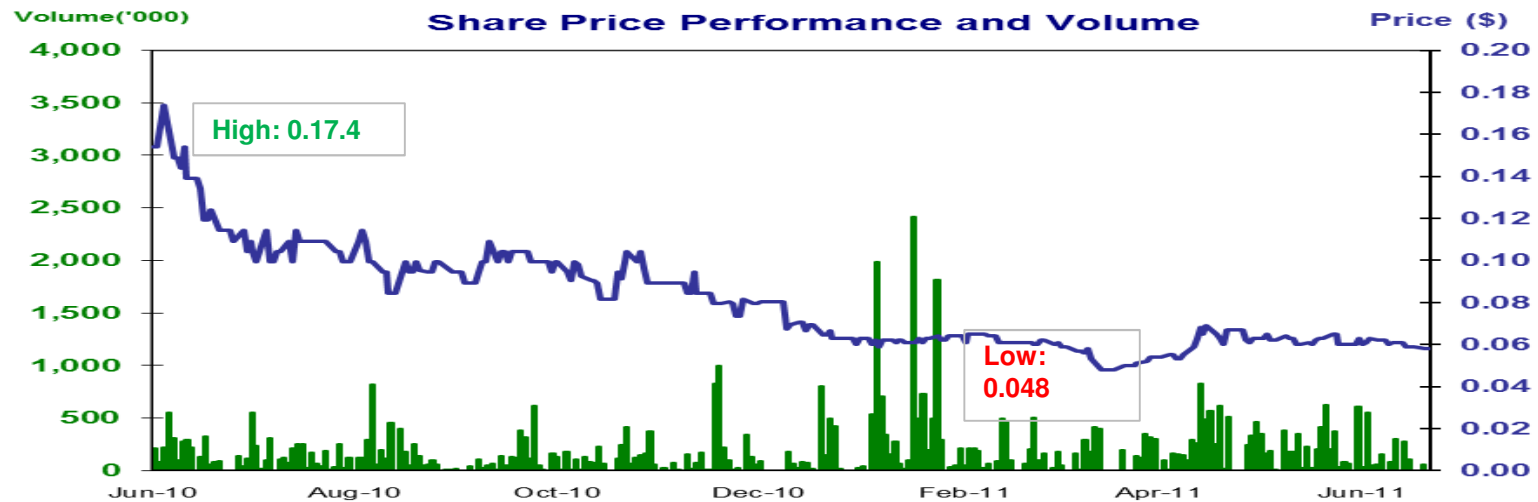
DTM - INVESTMENT HIGHLIGHTS

- Positive outlook for Molybdenum (Mo) - currently@ US\$36,000/t LME
 - Discovered a potentially world class Mo - Cu - Ag porphyry deposit
 - Current drilling intended to confirm maiden JORC resource by 4Q 2011
 - ✓ Exploration Target - surface to 350 only (**Refer Slide 11 Clarification statement**)
 - 60 to 70Mt: 0.05 - 0.06% Mo + 0.08 - 0.1% Cu + 4 - 5 g/t Ag
 - ✓ Open cut potential
 - ✓ Exploration Target grade > most other Australian Mo explorers
 - ✓ Exploration Target grade > some overseas operating Mo mines
 - Strong pipeline of news flow over next 6 months
 - ✓ Regular reporting of drill results
 - ✓ Metallurgical test work to enable equivalents to be reported
 - ✓ Maiden JORC resource planned by early 4Q 2011
 - ✓ Regional geochemistry results
 - Favourable project location and infrastructure
 - ✓ Established water, power and roads close to local workforce – NE Victoria
 - Strong pipeline of additional mineralised porphyry targets
-



CORPORATE STRUCTURE

ASX Code: DTM
Shares on issue: 119.4m
Market cap: \$7.28m
Options: 15.4m listed exercisable at 10c (31 Dec 2011)
5m unlisted exercisable at 15c (31 Dec 2013)
Directors: 15.25m shares (12.8%)
Top 20: 41.8%
Cash: ~\$1.1m



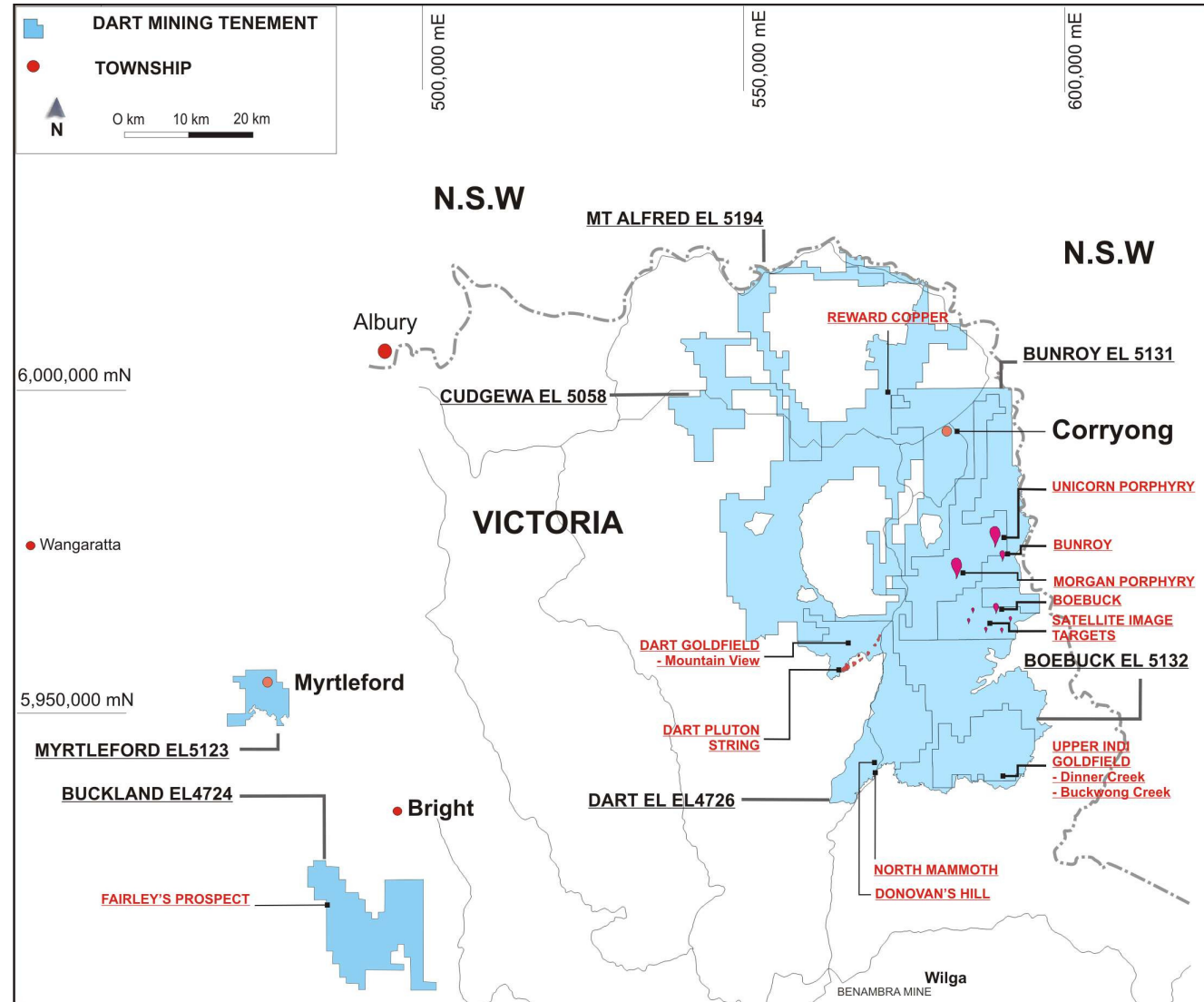


DTM TENEMENTS

GRANTED LICENCES

- Dart EL 4726
- Cudgewa EL 5058
- Buckland EL 4724
- Boebuck EL 5132
- Bunroy EL 5131
- Myrtleford EL 5123
- Mt Alfred EL 5194

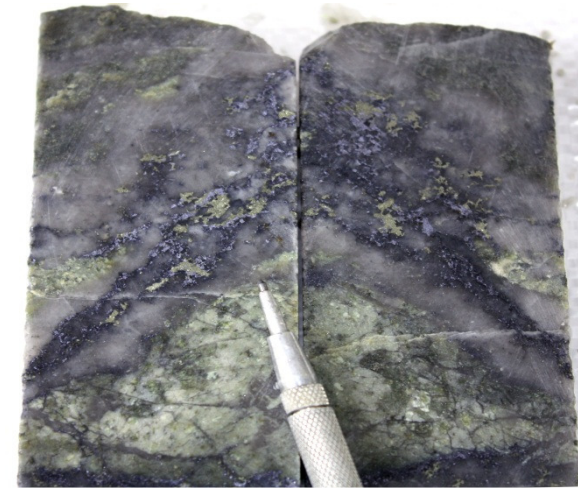
TOTAL: 2,750 Km²





UNICORN Mo-Cu-Ag PROJECT

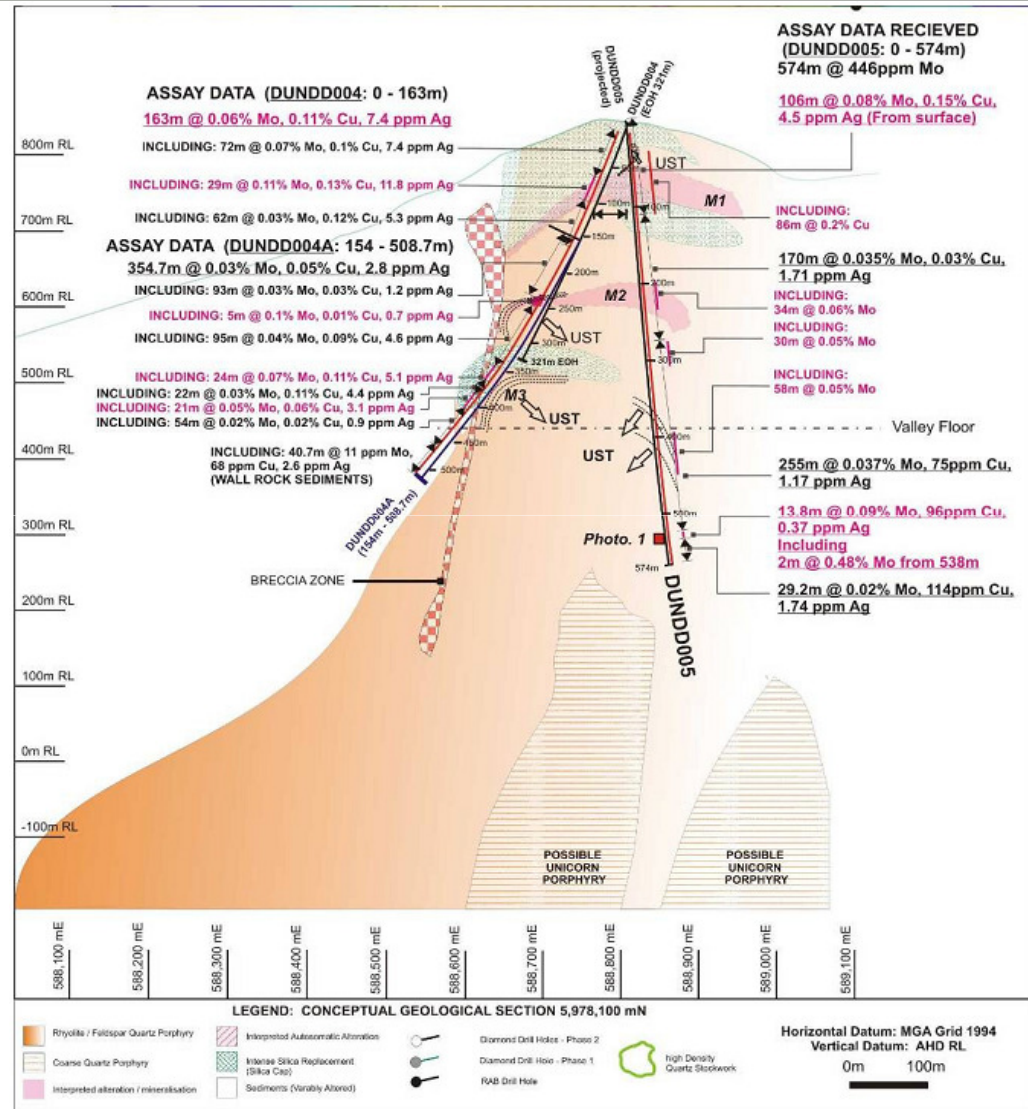
- A large multi pulse porphyry intrusive system with overlapping phases of molybdenum, copper and silver
- Very similar to giant Henderson and Climax primary molybdenum mines in Colorado
- Third drill program commenced in July
 - ✓ 1200 metre diamond drilling program
 - ✓ Hole 7 - 450m – drilled to north
 - ✓ Hole 8 – 380m – drilled vertical
 - ✓ Hole 9 – 340m – drilled to south
 - ✓ AMC Consultants advised on hole design and will be assisting with the estimation of the deposits Resources in accordance with JORC





UNICORN Mo-Cu-Ag PROJECT

- All drilling has confirmed extensive mineralisation
- Hole 5 - 574m @ 0.05% Mo including 106m @ 0.08% Mo, 0.15% Cu and 4.5 g/t
- Hole 4 – 423 m @ 0.05% Mo including 163m @ 0.06% Mo, 0.11% Cu and 7.4g/t Ag
- Intercepts comparable to operating mines
- Low Strip ratio Open cut potential
- Metallurgical test work underway





CATALYSTS / NEWS FLOW

	June		July				August		Sept	Oct	Nov
	W3	W4	W1	W 2	W3	W4	W1/2	W3/4			
Hole 7 Results	X		X		X						
Exploration Target		X									
Community Meeting				X							
Hole 8 Results					X			X			
Hole 9 Results						X			X		
Met Results								X			
JORC Resource										X	
Regional Geochem											X
Scoping Study											TBA



PROSPECTIVE GOLD PROJECTS

- DTM to focus on Unicorn
- Looking to Divest or JV its Gold Projects
- **Mountain View**
 - ✓ Prospective gold project, 45km south of Corryong
 - ✓ Limited drilling on two lenses - high grade gold lode with intersections up to 6m @ 21.79 g/t and 9m @ 10.2 g/t Au
 - ✓ Mineralisation open to north and south
- **Fairley's**
 - ✓ A 'rediscovery' by Dart Mining's exploration team
 - ✓ Alluvial gold production from 1853-1919 source not yet found
 - ✓ Potential entirely new style of disseminated (non reef) gold



BOARD AND MANAGEMENT

- **Lindsay Ward – CEO and Managing Director**
 - ✓ Experienced senior executive having worked at CEO and GM level across the Mining, Power Generation, Mineral Processing, Ports and Rail industries. Lindsay is a qualified geologist.
 - **Chris Bain – Chairman**
 - ✓ Well regarded corporate advisor who has been instrumental in a range of resource based acquisitions, IPOs and capital raisings. Chris is also a qualified geologist & mineral economist.
 - **Dean Turnbull – Executive Director**
 - ✓ Instrumental in identifying the prospectivity of Dart Mining's tenements and leads the Corryong based exploration team. Extensive exploration and mine geology experience.
 - **Stephen Poke – Non-Executive Director**
 - ✓ Experienced resources industry executive with a particular focus on all aspects of mining and exploration drilling.
 - **Richard Udovenya – Non-Executive Director**
 - ✓ Specialises in corporate, corporate governance and commercial law in the natural resources sector with a focus on ECM activities, including IPOs for ASX and AIM listings. Legal adviser to Australian and international companies operating in Australia, Africa and South America.
-