

**DATELINE RESOURCES
LIMITED**

(ACN 149 105653)
ASX Code: DTR

CAPITAL STRUCTURE

Share Price (21/04/20) \$0.002
Shares on issue 8,210million
Market Cap \$16.4 million
Unlisted Options 10 million

MAJOR SHAREHOLDERS

Southern Cross Exploration NL	32.5%
Mr. Mark Johnson AO	19.6%
National Nominees Ltd	15.4%

**DIRECTORS &
MANAGEMENT**

Mark Johnson AO
Chairman

Stephen Baghdadi
Managing Director

Greg Hall
Non-Executive Director

Anthony John Ferguson
Non-Executive Director

John Smith
Company Secretary

CONTACT
John Smith
Phone: +61 2 9375 2353
Postal Address: P.O. Box 553
South Hurstville NSW 2221
Email: info@datelineresources.com.au

Mining permits granted for Raymond and Carter mines

Dateline Resources Limited (ASX: DTR) (“Dateline” or the “Company”) is pleased to advise that it has received permits for two mining licences for the Raymond and Carter mines, located at the Company’s 100% owned Gold Links project in Colorado, USA.

The granting of these two additional mining permits gives Dateline a total of six mining permits in the Gunnison district of which five are spread across Gold Links North, Centre and South (Gold Links). In total, the company is now permitted to extract 420,000 tonnes per annum of which Gold Links makes up 350,000 and a further 70,000 tonnes from Green Mountain.

Historical records show that the majority of gold production within the Gold Links Project area occurred between 1896 and 1942. The Raymond was mined between 1890 and 1906 and again between 1939 and 1941. The Carter was mined up until 1932. Documented production from these two operations is 90,000 oz Au. Production was also continuous between 1933 and closed in 1942, however no production records for this period have been found yet. (See ASX announcement: 8 February 2019)

A detailed evaluation of the underground workings at Raymond and Carter properties was done by Atlas Precious Metals (Atlas) from 1983-1985. A summary of the Atlas work concluded that almost 4,000 metres of linear drifting was completed and approximately 2,000 metres were mined. Using this metric, approximately 50% of the vein was productive. The evidence is based on extensive mapping and sampling by Atlas. The sampling was professionally conducted and assayed by Chemex labs (a division of ALS) but the results are non-JORC compliant.

Management Commentary

Executive Director Stephen Baghdadi said: “Securing mining licences for both Raymond and Carter is a positive step forward for Dateline and the requisite permits provides the company with several exploration and production options”

“Board and management will continue to update shareholders as we advance our works programs for both Green Mountain and Gold Links projects.”

For more information, please contact:

John Smith

CFO / Company Secretary

+61 2 9375 2353

www.datelineresources.com.au

About Dateline Resources Limited

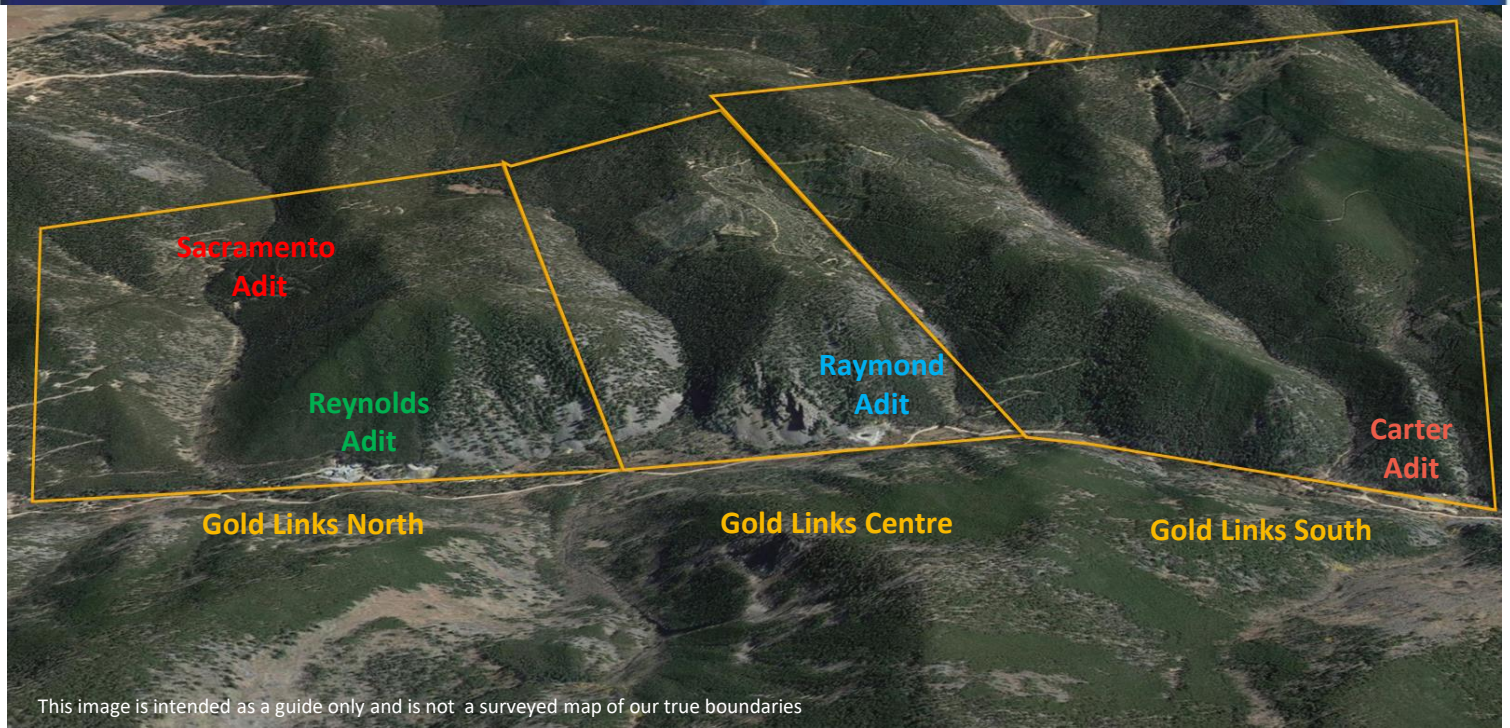
Dateline Resources Limited (ASX: DTR) is an Australian publicly listed company focused on gold mining and exploration in Colorado, United States of America. The Company owns 100% of the Gold Links project which is located in Gunnison County

The Gold Links is comprised of several contiguous historic gold mines that have been consolidated by the company. Gold Links has produced up to 150,000 oz of high-grade gold (see ASX announcement of 8 February 2019)

Mineralisation can be traced on surface and underground for almost 6km from the Northern to the Southern sections of the project. Well documented records indicate that there are large areas that remain untested at surface and little to no exploration has been done below the valley floor.

Dateline also owns the Lucky Strike and Mineral Hill permitted gold properties and has recommissioned a gold processing plant located at the Lucky Strike Mine.

The Gold Links and the Lucky Strike are located approximately 50km apart



Gold Links North includes	Gold Links Centre includes	Gold Links South includes
Sacramento Adit	Raymond Adit	Carter Adit
Sacramento vein	600 vein	100 vein
	950 vein	300 vein
Reynolds Adit	1100 vein	800 vein
1200 vein	1200 vein	1320 vein
1740 vein	1700 vein	1440 vein
2100 vein	1800 vein	1480 vein
2150 vein	1825 vein	1550 vein
2200 vein	2457 vein	1925 vein
2600 vein	3300 vein	2385 vein
2800 vein	Jessie vein	2500 vein
3300 vein	Gold Monument vein	2835 vein
	Maggie Mitchell vein	3040 vein
Dateline discovered	Volunteer vein	3131 vein
Hill vein	Upper Raymond vein	3640 vein
West Vein		3750 vein
		4085 vein
		4778 vein
		4868 vein
		4883 vein
		6300 vein
		Farley vein
		Grand Prize vein
		Volunteer vein
		Chloride vein

Veins starting with digits represent the number of feet from the start of the portal and were discovered and mapped from inside the adit

Veins that don't start with digits were discovered from surface outcrops

Only the 2150 vein has been drilled below the valley floor