



ACN 092 471 513

Wednesday 6 October, 2010

## **HIGH COPPER ASSAYS IN FIRST PASS SAMPLING**

### **ON EXPANDED YUINMERY PROJECT GROUND**

Empire Resources Limited (ASX code: "ERL") is pleased to report high levels of copper have been detected in a first pass rock chip sampling program by the Company on its recently acquired tenements directly north of its Yuinmery copper-gold project in Western Australia.

Rock chip samples, which included values up to 3,370 parts per million (ppm) Cu with many around 2,000 ppm Cu (Table 1), were collected from the Lorne Gossan area located 700m northeast of the Company's A Zone prospect (Figure 2). The Lorne Gossan, up to 3m wide and over 50m long, overlies an EM geophysical anomaly previously identified by "La Mancha Resources Inc (TSX-LMA) (hereinafter "La Mancha")", but which to date has only been tested with <30m deep RAB holes. Empire expects to make a decision shortly on a drill program for the area.

A recently completed airborne EM survey by La Mancha identified up to 22 previously untested conductive zones on their tenements as announced by Empire to the ASX on the 1<sup>st</sup> September 2010. To date only the Lorne Gossan area has been visited and sampled by Empire personnel but a ground based EM survey has just been completed over 13 of the VTEM anomalies and interpretation of the results is awaited.

The Lorne Gossan occurs northeast from Empire's A Zone and Just Desserts prospects. Just Desserts is the Company's flagship prospect within its wholly owned and advanced Yuinmery copper-gold project, where it has already estimated a JORC Indicated and Inferred resource of 1,070,000 tonnes at 1.82% copper and 0.78g/t gold.

Empire has entered into an option agreement to purchase an interest in three granted exploration licences and two granted prospecting licences held by La Mancha which total 149 km<sup>2</sup> and directly abut Empire's Yuinmery copper – gold resource project.

The five tenements are the subject of a joint venture between La Mancha and Giralia Resources Limited in which La Mancha currently holds an interest of approximately 75.82%. Under the terms of the option agreement, Empire must spend a minimum of A\$150,000 per annum for up to three years while retaining an option to purchase La Mancha's interest for a cash consideration of A\$750,000.

A 2% net smelter royalty capped at A\$5 million will be payable by Empire on any minerals produced from the La Mancha tenements.

Discussing the first surface sample results from the new La Mancha ground announced today, Empire Managing Director, Mr David Sargeant, said:

*“This is a very positive early ground truth indication from our expanded copper gold footholding around Yuinmery, particularly as this EM anomaly has never been drill tested at depth; any holes drilled have been shallow RAB drill holes only about 30 metres deep, none of which encountered fresh bedrock.*

*Previous exploration on the tenements has mainly been for gold which located many areas of anomalous copper and gold geochemistry. The recently completed airborne EM survey by La Mancha identified up to 22 previously untested conductive zones.*

*We consider these to be prospective for massive sulphide mineralization as the La Mancha anomalies are comparable to anomalies on our Yuinmery ground that we know through drilling, are associated with significant copper sulphide mineralisation.*

*Additionally, the sampled anomaly is only about 700 metres northeast of A Zone, which straddles La Mancha’s tenement boundary but where our previous drilling intersected 7m at 1.81% copper and 0.48g/t gold. It is also within the same sequence of rocks as the A Zone, Just Desserts, Trajan and C Zone copper-gold prospects so that adds to our confidence levels.*

*Any drill decision is likely to look at a campaign over several combined targets in this area.”*

**TABLE 1 : Lorne Gossan Copper Assays**

Sample Number	Northing GDA94 z50	Easting	Cu ppm
113457	6839197	685860	<b>1070</b>
113458	6839188	685855	<b>2550</b>
113459	6839165	685894	<b>2160</b>
113460	6839152	685894	<b>1730</b>
113461	6839139	685918	<b>3370</b>
113462	6839125	685922	<b>1820</b>
113463	6839110	685946	<b>1150</b>
113464	6839114	685938	<b>698</b>
113465	6838984	685624	<b>253</b>

Assays by mixed acid digest, ICP-MS.

For further information on the Company visit [www.resourcesempire.com.au](http://www.resourcesempire.com.au)

David Sargeant – Managing Director

Phone: +61 8 9361 3100

Adrian Jessup – Executive Director

Phone: +61 8 9361 3100

*The information in this report that relates to Exploration Results has been compiled by Mr. David Ross B.Sc(Hons), M.Sc. who is an employee of the Company. He is a member of the Australasian Institute of Mining and Metallurgy and the Australian Institute of Geoscientists. He has sufficient experience which is relevant to the style of mineralization and type of deposit under consideration and to the activity to which he is undertaking to qualify as a Competent Person as defined in the 2004 Edition of the “Australasian Code for Reporting of Exploration Results, Mineral Resources and Ore Reserves”. David Ross consents to the inclusion in the public release of the matters based on his information in the form and context in which it appears.*

## Notes on the Yuinmery Resource

The resource estimate for the Just Desserts prospect at Yuinmery was completed and announced to the market on 9 April 2009. The Mineral Resource by category to a depth of 250m below surface is reported below. The resource comprises no oxide mineralization, only transitional and fresh.

### Just Desserts Classified Mineral Resources – March 2009

	Category	Tonnes	Grade*	Grade*	Grade*
			Cu%	Au g/t	Ag g/t
<b>1%Cu cutoff</b>	Indicated	104,000	1.65	0.86	1.32
	Inferred	966,000	1.84	0.77	2.12
	<b>TOTAL</b>	<b>1,070,000</b>	<b>1.82</b>	<b>0.78</b>	<b>2.06</b>
<b>1.5%Cu cutoff</b>	Indicated	46,000	2.11	1.14	1.58
	Inferred	536,000	2.34	0.92	2.68
	<b>TOTAL</b>	<b>582,000</b>	<b>2.33</b>	<b>0.93</b>	<b>2.61</b>

*\*High assays have been cut to 9% Cu, 20g/t Au and 10g/t Ag.*

Resource modelling consultants Datageo reported the above estimate in accordance with the 2004 JORC Code utilising all drill hole information available on Prospecting Licence P57/1215 up to the end of June 2008.

The resource grade was estimated using ordinary kriging based on the drill hole data composited downhole to 1m intervals within constraining shapes representing the mineralization. Assumed specific gravity values used were:- transitional 2.7t/m<sup>3</sup>; fresh 3.2t/m<sup>3</sup>.



Figure 1 – Location of Empire’s Yuinmery copper –gold project in Western Australia

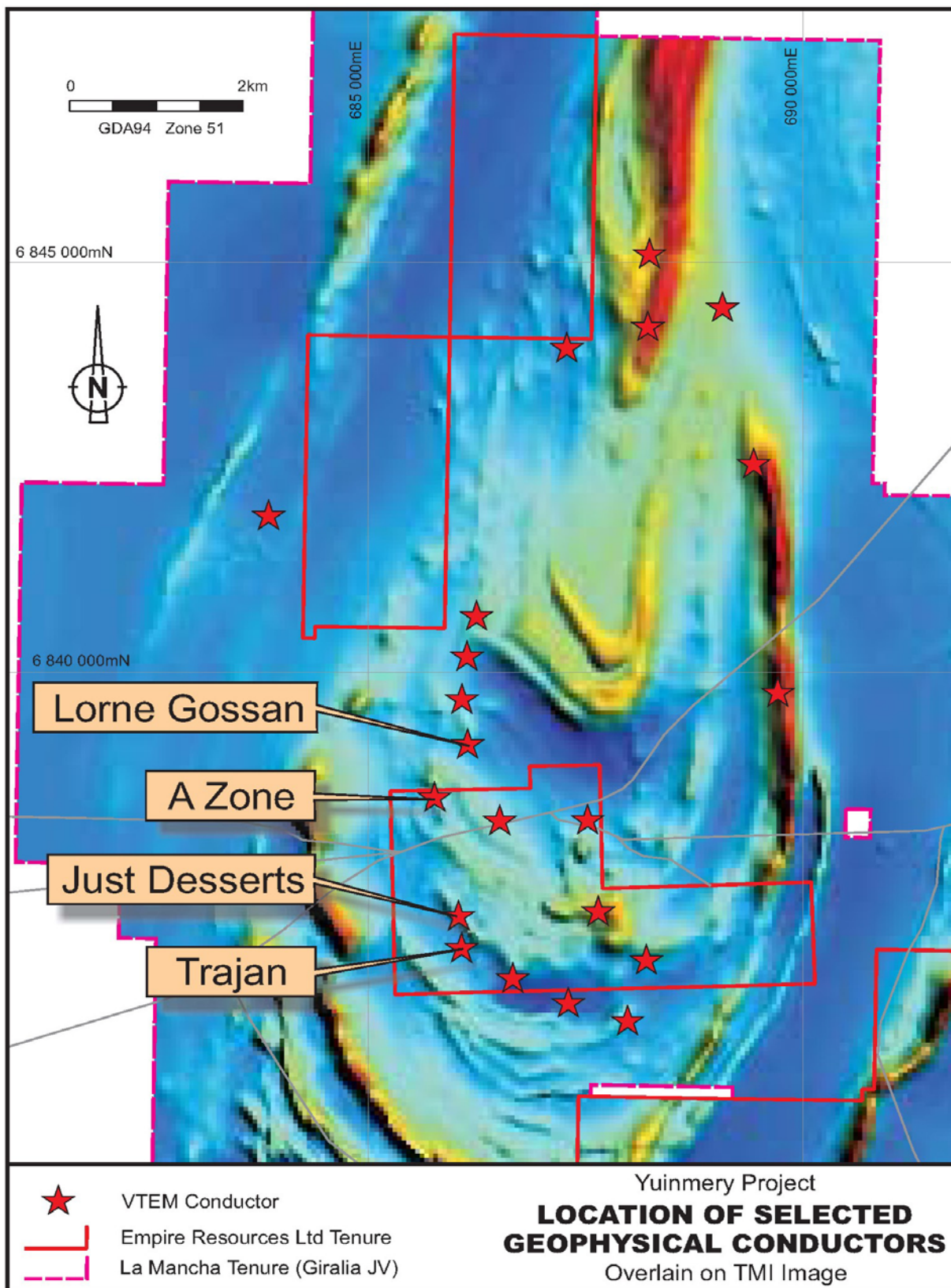


Figure 2 – Yuinmery Project and La Manche tenure