



GOLDEN CROSS RESOURCES LTD

ABN 65 063 075 178

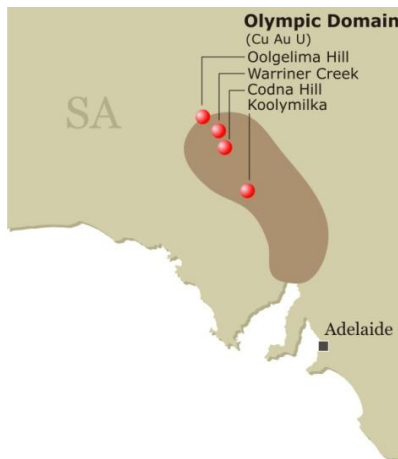
ASX Announcement

22 Edgeworth David Ave
Hornsby NSW 2077
Phone (02) 9472 3500
Fax (02) 9482 8488

29 August 2011

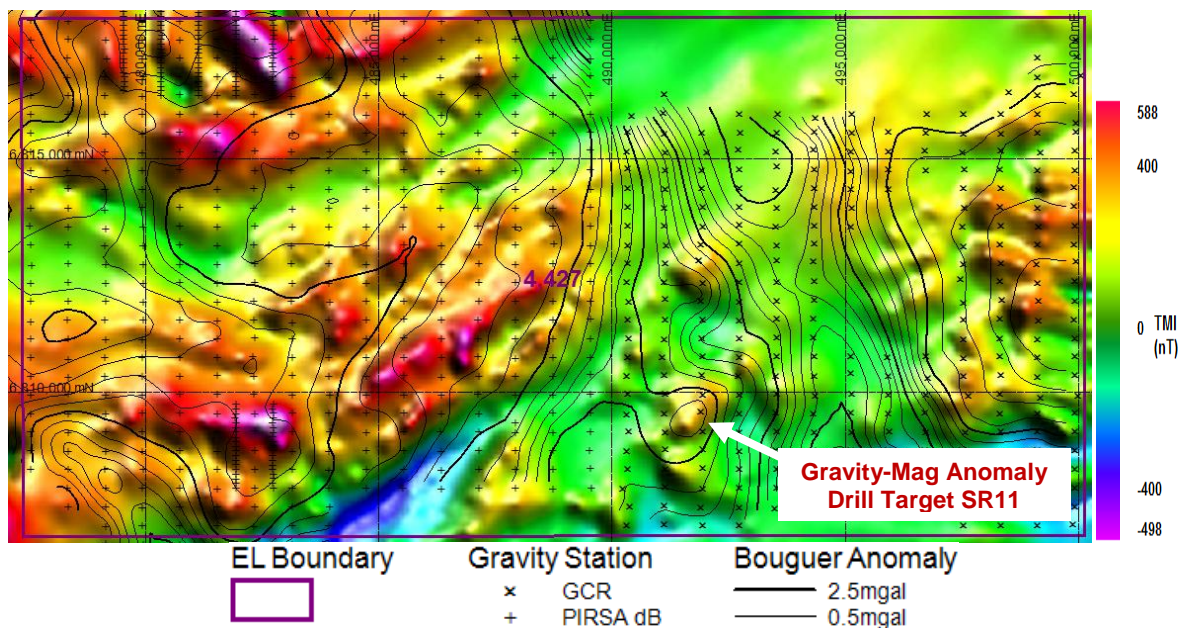
GCR'S SOUTH AUSTRALIAN GAWLER CRATON PROJECTS

NEW GRAVITY DATA INTERPRETATION ADDS TO GCR'S IOCG TARGETS



Golden Cross Resources (GCR) holds over 3,400 km² of area within the Gawler Craton of South Australia. The Gawler Craton, and the G2 Structural Corridor which traverses it, host Australia's major Iron Oxide Copper Gold (IOCG) deposits: Olympic Dam, Carapateena and Prominent Hill.

Interpretation of open-file and new GCR gravity data has yielded high quality drill targets within GCR's tenements.



**Figure 1. Oolgelima Hill, EL4427B :
Gravity contours over regional magnetic (TMI) data**

An exciting new drill target has emerged from GCR's gravity data analysis combined with aeromagnetic data. Figure 1 shows a north-south open corridor containing two gravity anomalies coincident with elevated magnetic readings. Anomaly SR11 is a walk-up drill target.

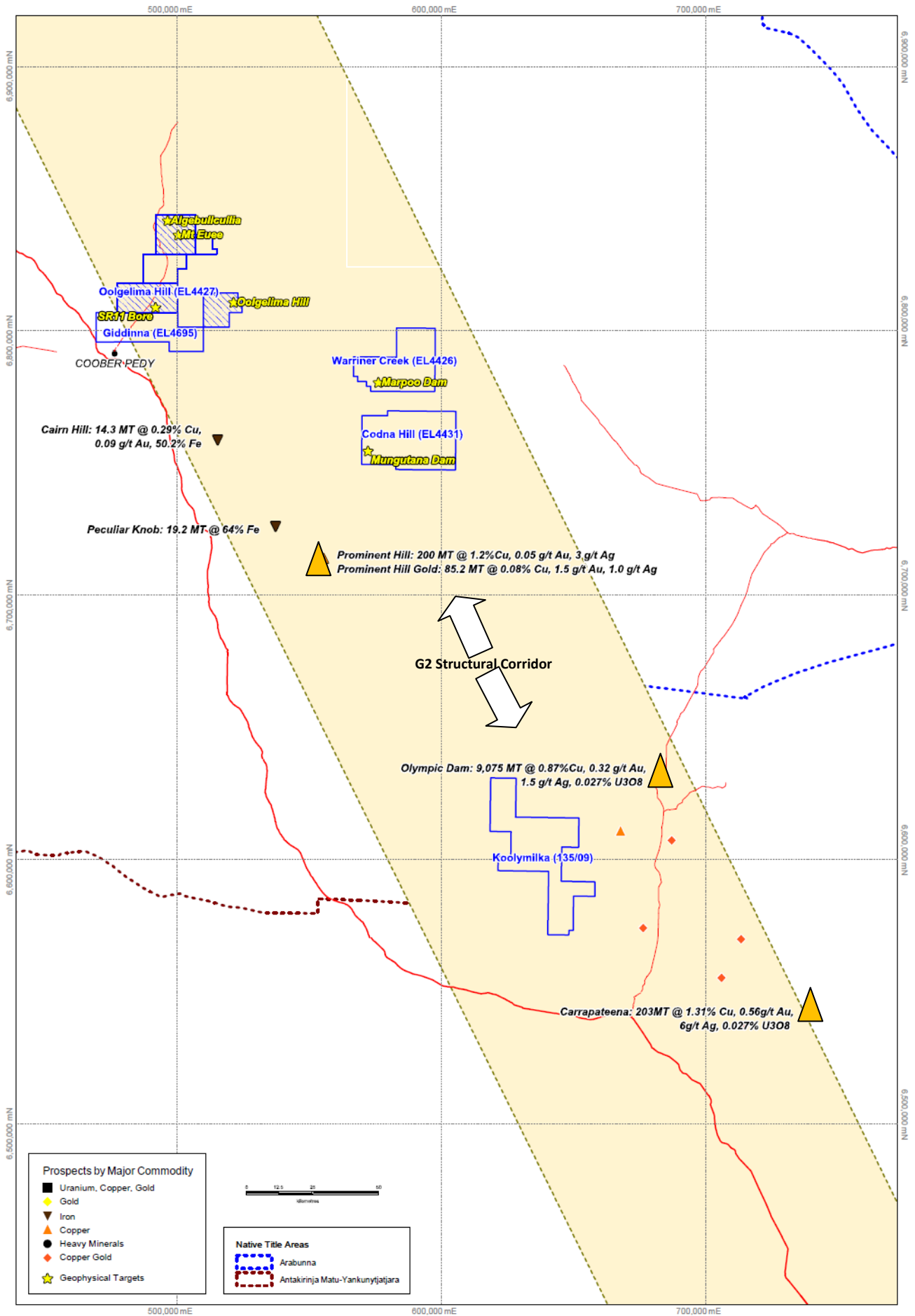


Figure 3. GCR tenements and targets with existing IOCG deposits

GCR's other gravity-magnetic anomalies are presented in Figures 4 - 9 to show the anomalism and level of geophysical data coverage. The important features to note are the intensity and footprint of the gravity anomalies as well as the gravity data density and associated magnetic anomalism. Comparison with the anomalies over the Prominent Hill, Olympic Dam and Carapateena deposits may be made using Figure 10.

INDIVIDUAL TARGET IMAGES – Figures 4 to 9
(Grid squares are 1 kilometre)

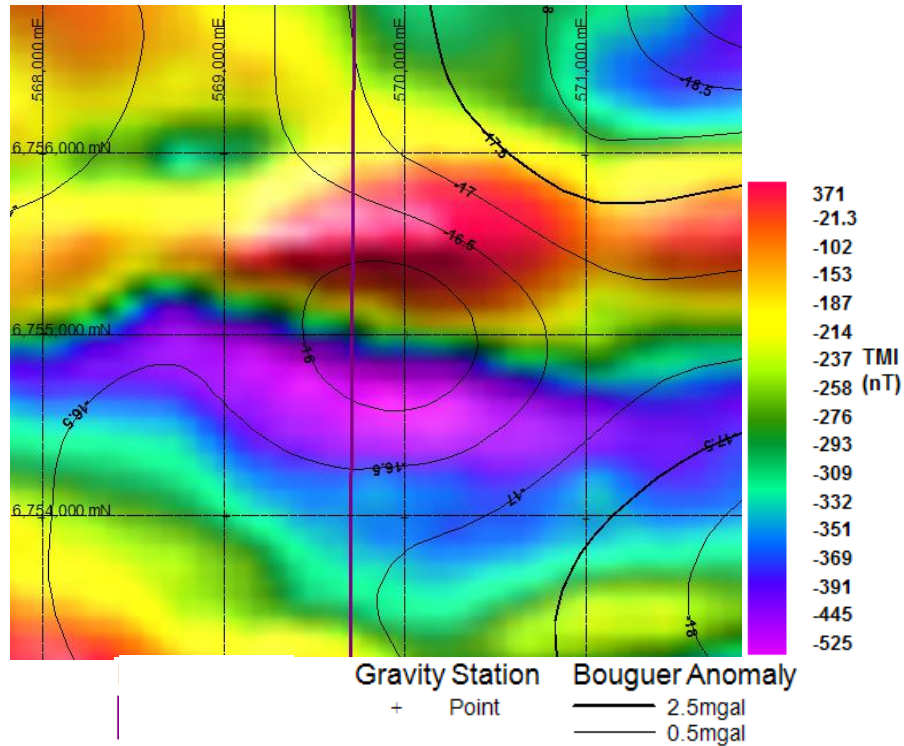


Figure 5. Mungutana Dam gravity anomaly in contours on regional magnetic (TMI)

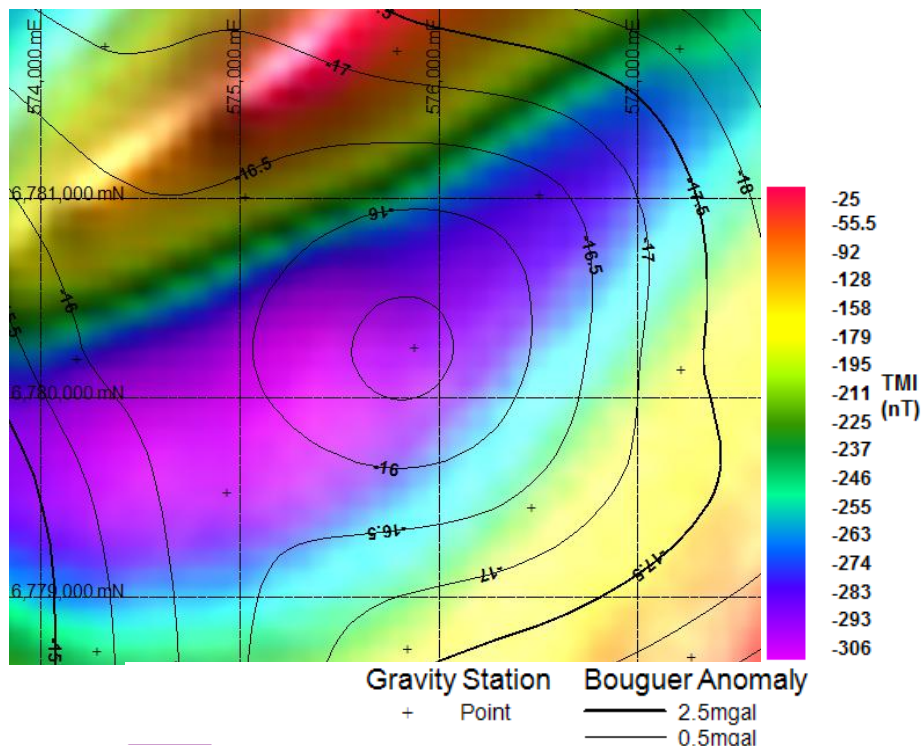


Figure 6. Marpool Dam gravity anomaly in contours on regional magnetic (TMI).

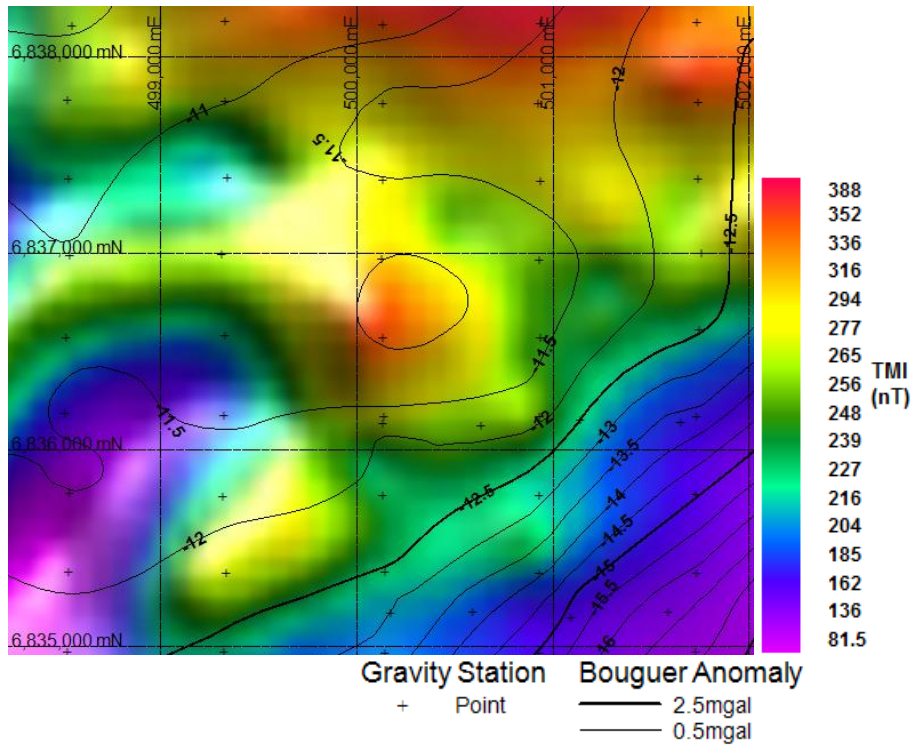


Figure 7. Mt Euee gravity anomaly as contours on regional magnetic (TMI).

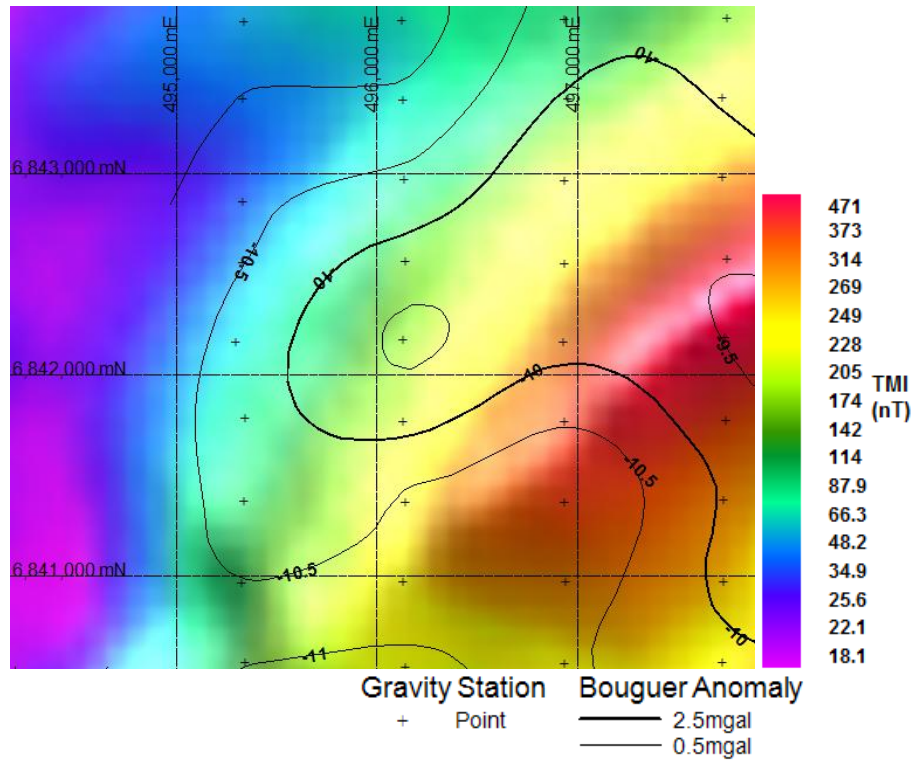


Figure 8. Algebullcullia gravity anomaly as contours on regional magnetic (TMI)

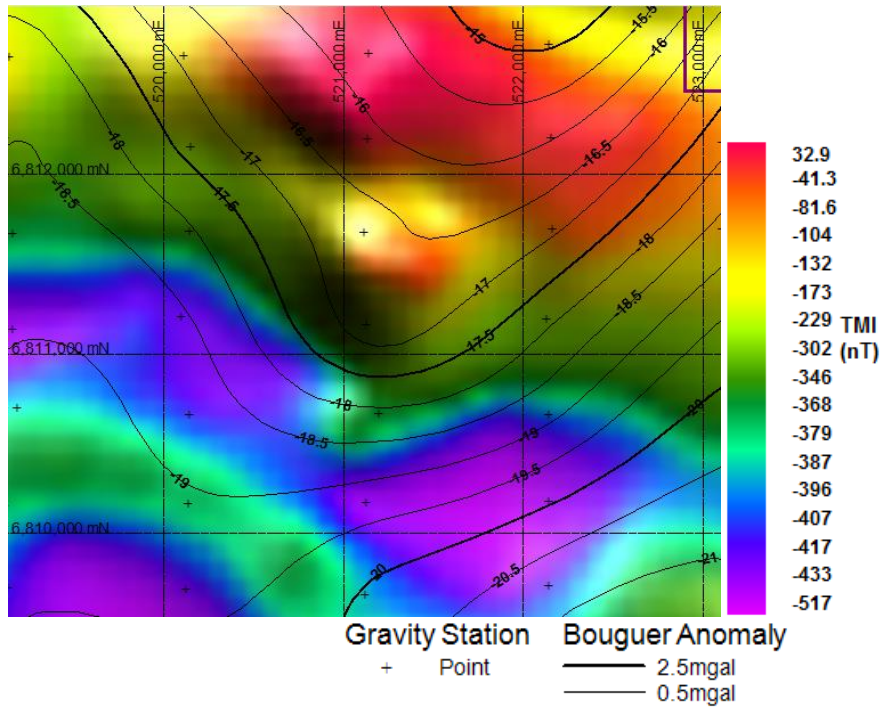
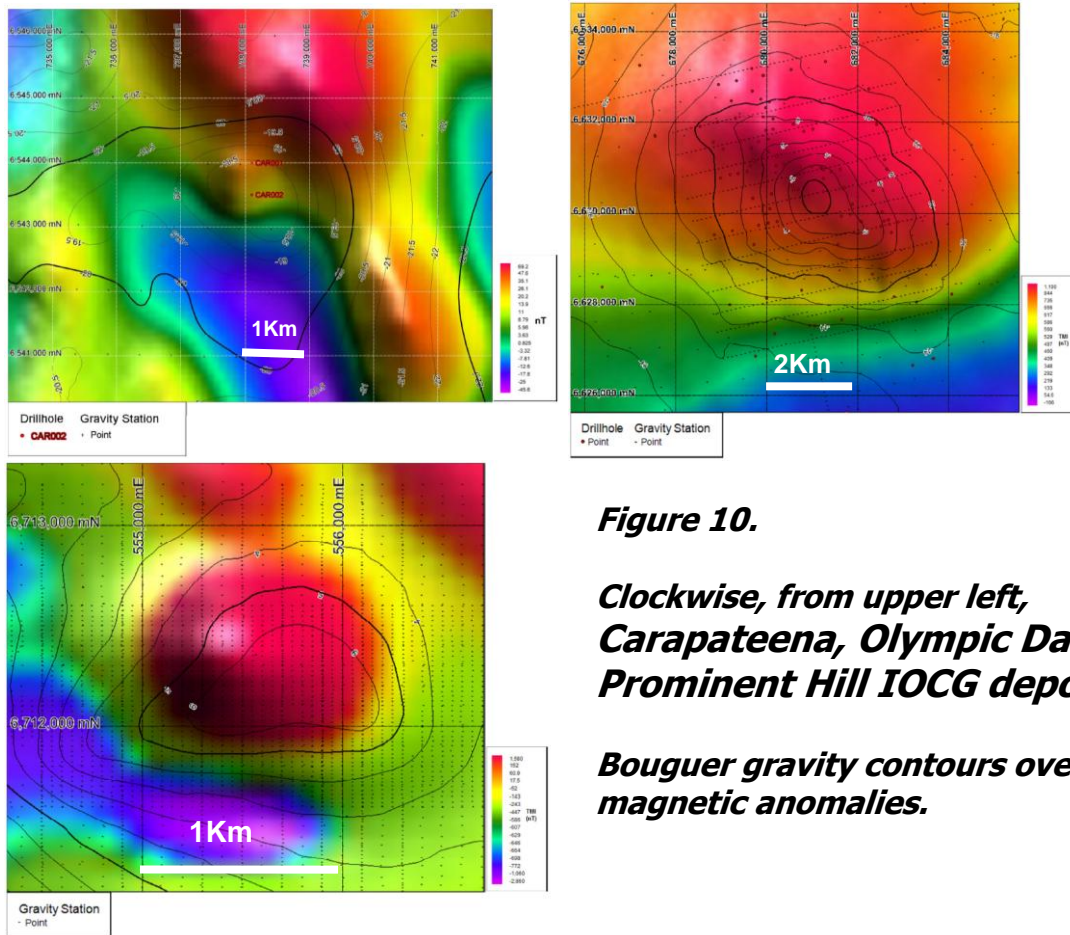


Figure 9. Oolgelima Hill gravity anomaly as contours on regional magnetic (TMI).



CORPORATE DIRECTORY

Board of Directors

Chris Torrey	Chairman
Kim Stanton-Cook	Managing Director
Li Xiaoming	Non Executive Director
Jingmin Qian	Non Executive Director
Suzanne Qiu	Non Executive Director
David Timms	Non Executive Director
Li Yan	Alternate Director for Mr Li

Company Secretary

Simon Lennon

Issued Share Capital

Golden Cross Resources Ltd has 1,361 million ordinary shares on issue listed on the ASX.

Share Registry

Boardroom Limited
Level 7
207 Kent Street
Sydney NSW 2000

Phone (61 2) 9290 9600
Fax (61 2) 9279 0664

Registered Office

Golden Cross Resources Ltd
22 Edgeworth David Avenue
Hornsby NSW 2077
Australia

Phone: (61 2) 9472 3500
Fax: (61 2) 9482 8488
www.goldencross.com.au

Please direct shareholding enquiries to the Share Registry.

ABOUT GOLDEN CROSS RESOURCES LTD

Golden Cross Resources (ASX:GCR) is a mineral explorer with a copper-gold focus. Its major activity is the Copper Hill copper-gold project in central NSW. GCR also has many other high quality projects across Australia as well as prospective joint ventures funded and managed by GCR's partners.

The Copper Hill project geological resource contains 619,000 tonnes of copper and 1.64 million ounces of gold of which approximately 85% falls within an optimum pit shell. The project is ideal for open pit mining with outcropping mineralisation, and the infrastructure (existing and potential) is excellent. Promising extensions to the known deposits continue to be found.

Current drilling efforts are aimed at extending the size and grade of the mineralisation. Metallurgical studies, based on a new strategy, are being undertaken to maximise copper and gold recoveries.

Completion of a Definitive Feasibility Study is planned for the end of 2011 with a Bankable Feasibility Study, acceptable to Chinese or other financiers, now scheduled for mid-2012. When the Definitive Feasibility Study is complete, GCR will have more certainty regarding the potential for the project to become an operating mine. Indications to date are promising.

ABOUT China United Mining Investment Corporation (CUMIC)

CUMIC is a privately owned, Beijing-based investment company specialising in mineral and mining investment. CUMIC has a portfolio of exploration and mining assets in various parts of the world, focusing on iron, copper and gold. CUMIC developed and controls the Mongolia Eleet River Iron and Steel Company, a major iron ore mining company. CUMIC holds approximately 32% of GCR's issued capital.

