

ASX Announcement

Quarterly Activities Report
For the Quarter Ended 31 March 2021



HIGHLIGHTS

Further growth and exploration success for Genesis as Ulysses Resource hits 1.6Moz | \$11m raising to underpin next phase of growth

Ulysses Gold Project, Western Australia (GML: 100%)

- **Ulysses Mineral Resource Estimate increases to 1.6 million ounces of gold¹:**
 - *The updated Measured, Indicated and Inferred Mineral Resource now totals 27.3Mt @ 1.8g/t gold for 1,608,000 ounces of contained gold, which represents an increase of 327,000 ounces (26%) over the previous June 2020 Mineral Resource;*
 - *Total Measured and Indicated Mineral Resource increased by 32% (237,000 ounces) to 984,000 ounces. As a result, 61% of the total contained ounces are now in the Measured and Indicated categories;*
 - *Significant Resource growth opportunities remain through the extension of known Resources and new discoveries; and*
 - *Ongoing drilling programs will continue to evaluate these opportunities, with a further Resource update targeted for Q4 CY2021.*
- **Updated Mineral Resource provides strong foundation for the ongoing Feasibility Study on a standalone gold project at Ulysses. The study is due to be completed in Q2 CY2021.**
- **Highly successful ongoing drilling program at Ulysses completed during the quarter:**
 - *Confirming and upgrading existing Mineral Resources at the Admiral, Clark, Butterfly and Orient Well deposits;*
 - *Expanding the known Resources at depth and along strike; and*
 - *Targeting new discoveries.*
- **Significant drilling results continue to be reported from the Admiral-Clark-Butterfly area, Orient Well and the new Puzzle North to Puzzle corridor.**

Corporate

- **\$11M capital raising announced subsequent to quarter-end with firm commitments received for a Placement to raise \$10 million, plus proposed Share Purchase Plan to raise \$1 million.**

Genesis Managing Director, Michael Fowler, said: “We took further important steps during the March quarter towards our goal of creating a substantial new gold mining and processing hub near Leonora, based on our recently expanded Ulysses Gold Project.

“Ongoing drilling programs delivered outstanding results, paving the way for a 26% increase in the Ulysses Mineral Resource to 1.6 million ounces – an increase of 327,000 ounces. The updated Mineral Resource provides a strong foundation for the ongoing Feasibility Study on a standalone gold project at Ulysses, which is due to be completed in Q2 CY2021.

“The recent announcement of an \$11 million capital raising puts the Company in a strong position to maintain an aggressive drilling program as we complete the Feasibility Study and target the next leg of resource growth and discovery at Ulysses.”

¹ Refer to Table 1 of this announcement for details of the Resource Estimate for the Ulysses Gold Project

ULYSSES GOLD PROJECT, WA (Genesis: 100%)

The Ulysses Gold Project is located ~30km south of Leonora and 200km north of Kalgoorlie, in the mineral-rich and highly prospective Eastern Goldfields of WA.

It lies 30km south of the Gwalia mine (6Moz of production and 2.1Moz of Ore Reserves) and along strike from the Orient Well and Kookynie mine camps, which have produced over 0.5Moz.

Genesis acquired the Ulysses Project in 2015 and, following initial exploration success, completed two open pit mining campaigns at the Ulysses West Pit in 2016 and 2017. Ore from Ulysses West was processed under a toll-treatment arrangement at the Paddington Mill, located 160km south of Ulysses along the Goldfields Highway.

Thanks to a two-pronged strategy of successful exploration and regional acquisition over the past 2-3 years, Genesis is now targeting the development of a much larger long-life standalone mining and processing operation at Ulysses with major Resource expansion drilling programs continuing in parallel with regional exploration programs.

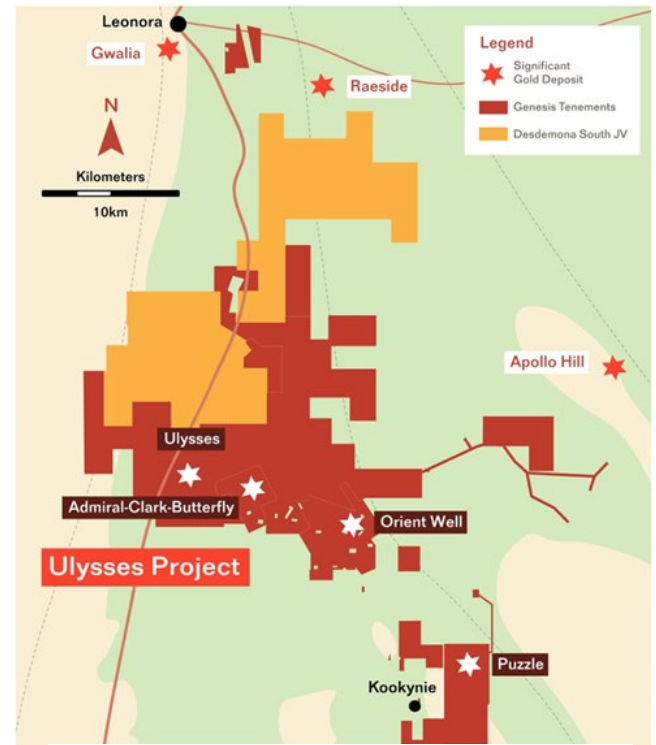


Figure 1. Ulysses Gold Project location.

Updated Mineral Resource Estimate for Ulysses Gold Project

During the Quarter, Genesis reported an updated Mineral Resource Estimate with a **26 per cent increase** in contained ounces to **1,608,000oz** of gold. The updated Mineral Resource incorporates the results of the highly successful drilling programs completed at the Ulysses Project over the second half of 2020 following the acquisition of the Kookynie tenements last year.

The updated Measured, Indicated and Inferred Mineral Resource now totals **27.3Mt @ 1.8g/t gold for 1,608,000 ounces of contained gold** (refer to Table 1 for full details), which represents an increase of 327,000 ounces over the previous June 2020 Mineral Resource. Importantly, the higher-confidence Measured and Indicated component has increased by **237,000 ounces (32%) to 984,000 ounces**, with this component of the Resource available for conversion to Ore Reserves following the completion of mining studies.

Refer to the ASX announcement dated 29 March 2021 for full details of the updated Mineral Resource Estimate.

Admiral-Butterfly-Clark Group

The total combined Mineral Resource for the Admiral-Butterfly-Clark (“ABC”) Group deposits (see Figure 2) has increased by **87% (213,000 ounces)** to **10.3Mt @ 1.4g/t Au for 459,000 ounces**. Details of the individual Resources are tabulated in Table 1 and shown in plan view in Figure 3.

The 2020 drill program was successful in confirming historical drilling data and the continuity of mineralisation, as well as upgrading parts of the Inferred Resources for the Admiral, Butterfly and Clark deposits. Drilling also extended the limits of those deposits.

The combined Admiral, Butterfly and Clark Resource has increased from 245,000 to 339,000 ounces, a 39% increase in contained ounces. Importantly the Measured and Indicated categories have increased by 59,000 ounces from 137,000 ounces to 196,000 ounces for these three deposits, with the grade remaining steady.

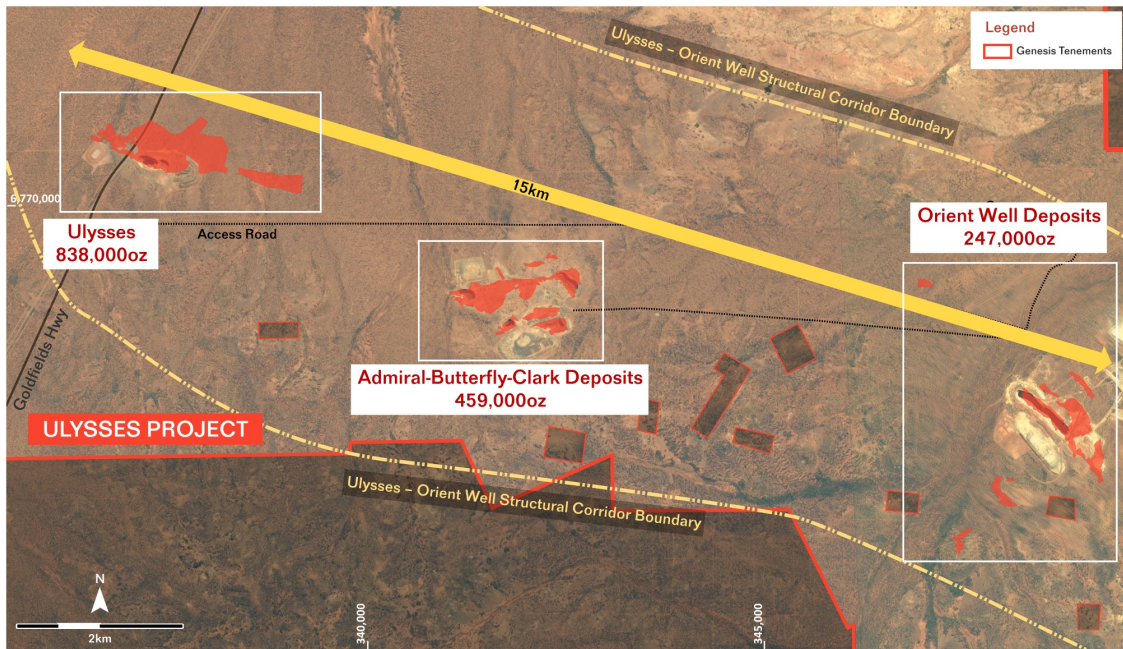


Figure 2. Location of Mineral Resources.

Initial Resources were estimated for the King, Danluce and Butterfly North deposits (see Figure 3 and Table 1) and have been included in the combined shallow Resource. The inclusion of the King, Danluce and Butterfly North Resources has added 121,000 ounces to the total Mineral Resource.

All Resources remain open, and drilling programs will continue throughout 2021 targeting extensions to all Resources as well as new near-mine discoveries.

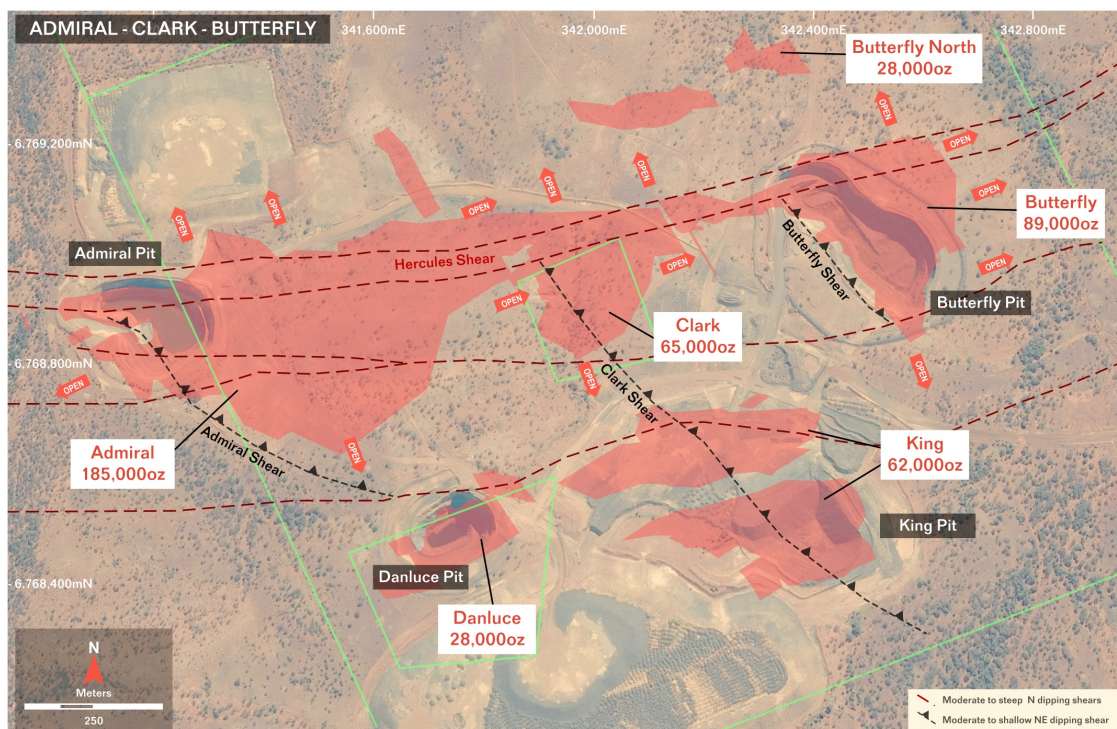


Figure 3. ABC Group Resource Locations.

Orient Well Group

The combined Mineral Resource for the Orient Well Group of deposits (see Figure 2) has increased by **305% (186,000 ounces)** to **7.3Mt @ 1.1g/t Au for 247,000 ounces**. Details of the individual Resources are tabulated in Table 1 and shown in plan view in Figure 4.

The Orient Well Resource has increased by **210% (128,000 ounces)** to **5.43Mt @ 1.1g/t Au for 189,000 ounces**.

The 2020 drill program was successful in confirming historical drilling data at Orient Well, confirming the continuity of mineralisation and upgrading parts of the Inferred Resources for the Orient Well deposit. Drilling also significantly extended the limits of the Orient Well deposit.

Initial Resource estimates were completed for the Orient Well East and Orient Well NW deposits (see Figures 2 and 4). The inclusion of the Orient Well East and NW deposits has added an additional 42,000 ounces to the total Mineral Resource.

The Orient Well, Orient Well East and Orient Well NW deposits remain open and extensions to all of these Resources will continue to be targeted in 2021.

Ulysses

The Ulysses Mineral Resource was reduced by 29,000 ounces to 838,000 ounces as a result of adjusting the portion of the Resource model that is above 0.5g/t Au and constraining the model to a depth of <~130m below surface (previously ~200mbs) to reflect potential development by open pit mining. The Ulysses Resource now stands at **7.74Mt @ 3.4g/t Au for 838,000 ounces**.

Drilling in 2020 to upgrade part of the high-grade portion of the Mineral Resource and to define the margins of the Ulysses West shoot, reported at a cut off of 2g/t gold, resulted in a slight increase in the Mineral Resource from 695,000 ounces to 705,000 ounces (refer to Table 1 for details) which will form part of the mining evaluation for the Feasibility Study.

Puzzle

There has been no change to the June 2020 Mineral Resource for the Puzzle deposit.

Ongoing Drilling Results – Ulysses Gold Project

During the Quarter, Genesis reported highly encouraging results from ongoing Resource drilling consisting of Reverse Circulation (RC) and diamond drilling programs at Admiral-Butterfly-Clark, Orient Well and Ulysses Deposits (Figure 2). Drilling was also completed at Puzzle North and Puzzle during the quarter with results reported during April.

The results have confirmed the presence of significant shallow gold mineralisation at all deposits.

The Admiral-Butterfly-Clark and Orient Well deposits represent a cluster of deposits within the Ulysses-to-Orient Well structural corridor that are continuing to be targeted by systematic resource drilling.

The results reported during the quarter are from a combination of resource confirmation and expansion drilling.

Admiral-Butterfly-Clark Drilling Results

The results reported during the quarter at the Admiral-Butterfly-Clark deposits comprised RC and diamond holes, with drilling designed to intersect the Hercules and Clark shears. Drilling also focused on upgrading parts of the Inferred Resource at Butterfly.

Full details of results received during the quarter are detailed in Genesis' ASX announcements dated 13 January, 15 February and 12 March 2021.

Mineralisation remains open at all deposits.

Orient Well Drilling Results

The results reported during the quarter at the Orient Well deposit consisted of RC and diamond holes, with drilling designed to intersect the moderate-NE dipping Orient Well felsic volcanic.

Significant results received during the quarter are detailed in Genesis' ASX announcements dated 13 January, 8 February, 17 February and 9 April 2021. Results are highlighted below in plan view in Figure 4 with significant results including:

- **11.00m @ 16.38g/t gold from 109m** **20USDH177**
- **37m @ 1.07g/t Au from 60m** **21USRC836**
- **1m @ 67.80g/t Au from 67m** **21USRC839**
- **19m @ 2.49g/t Au from 147m** **21USRC848**
 - **Including 8m @ 5.06g/t Au from 147m**
- **3m @ 7.42g/t Au from 109m** **21USRC849**
 - **Including 1m @ 20.50g/t Au from 109m**
- **21m @ 1.88g/t Au from 120m** **21USRC850**

Drilling continues to confirm the presence of significant mineralisation associated with the Orient Well felsic volcanic host rock.

The mineralisation remains open and is a significant drill target (see Figures 4 and 6). The high-grade mineralisation is associated with quartz veining, silica and sericite alteration within the felsic volcanic (rhyodacite) unit.

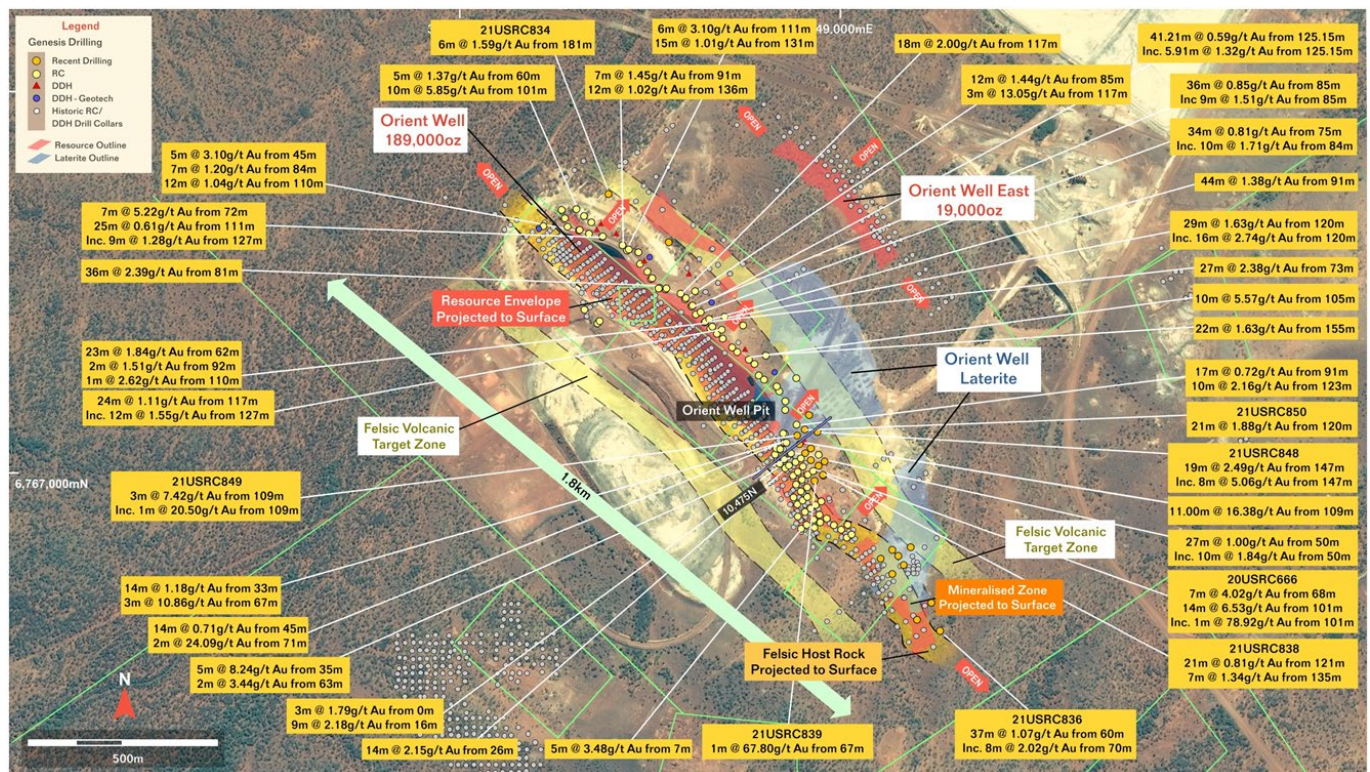


Figure 4. Plan view of Orient Well drilling. Recent results shown in dark yellow boxes. Position of cross-section highlighted.

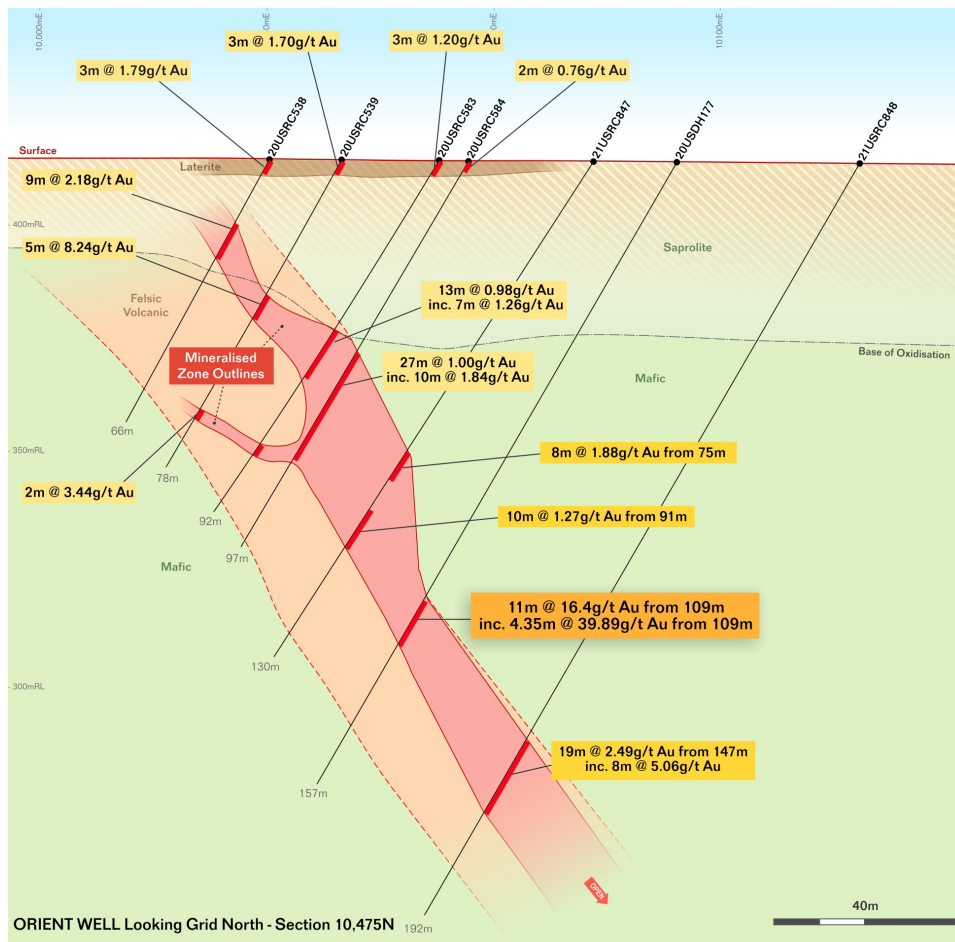


Figure 5. Local section 10,475N looking local grid north. New drilling intercepts in dark yellow boxes.

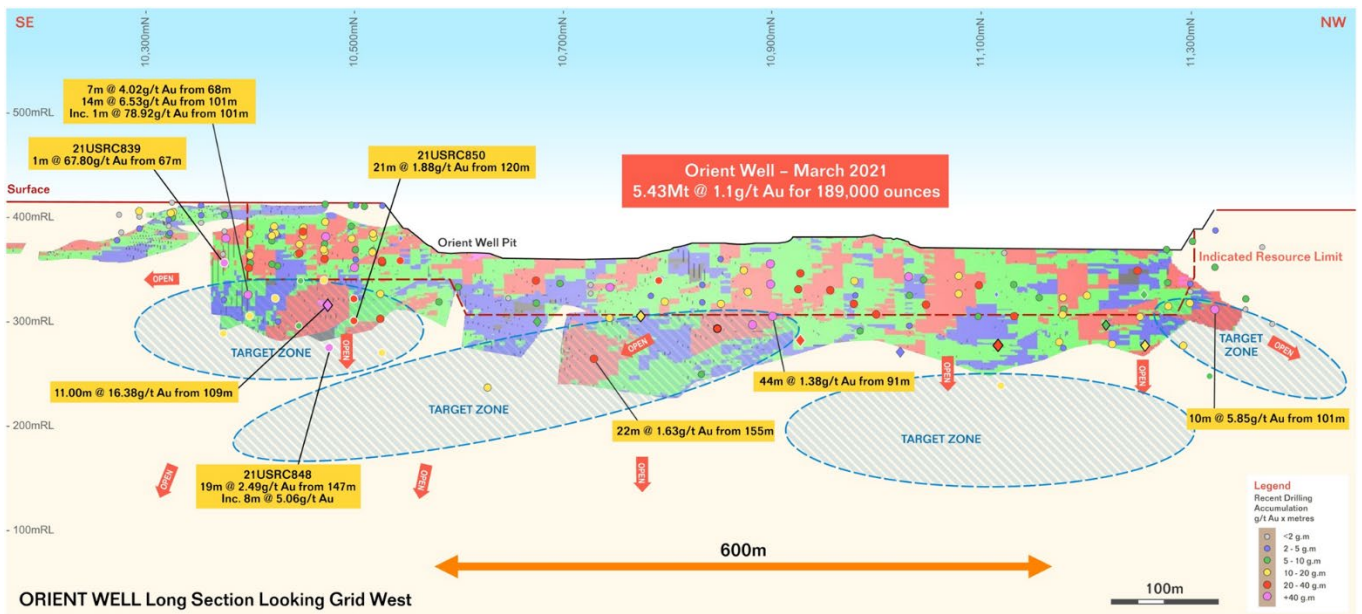


Figure 6. Schematic long section looking local grid west.

Ulysses Drilling Results

The RC drilling program at Ulysses focused on part of the Ulysses Mineral Resource that may form part of a future open pit mining operation at the Ulysses deposit above the proposed Ulysses underground.

Significant results received during the quarter (refer to the ASX announcement dated 23 March 2021 for full details of the drilling results) are highlighted below in plan view in Figure 7 with significant results including:

- 12m @ 5.16g/t Au from 83m 20USRC749
- 4m @ 10.06g/t Au from 80m 20USRC761
- 1m @ 34.38g/t Au from 57m 20USRC762
- 18m @ 2.49g/t Au from 87m 20USRC762
- 8m @ 2.60g/t Au from 72m 20USRC763
- 4m @ 3.46g/t Au from 86m 20USRC763
- 9m @ 2.32g/t Au from 90m 20USRC764
- 10m @ 2.87g/t Au from 75m 21USRC766
- 12m @ 5.54g/t Au from 87m 21USRC767
- 11m @ 2.40g/t Au from 92m 21USRC768

Intercepts are all associated with the Ulysses shear, which dips at ~30 to 35 degrees to the north-east. Drilling has confirmed a consistent zone of primary mineralisation at the base of a conceptual open pit (Figure 7) sitting above the conceptual underground.

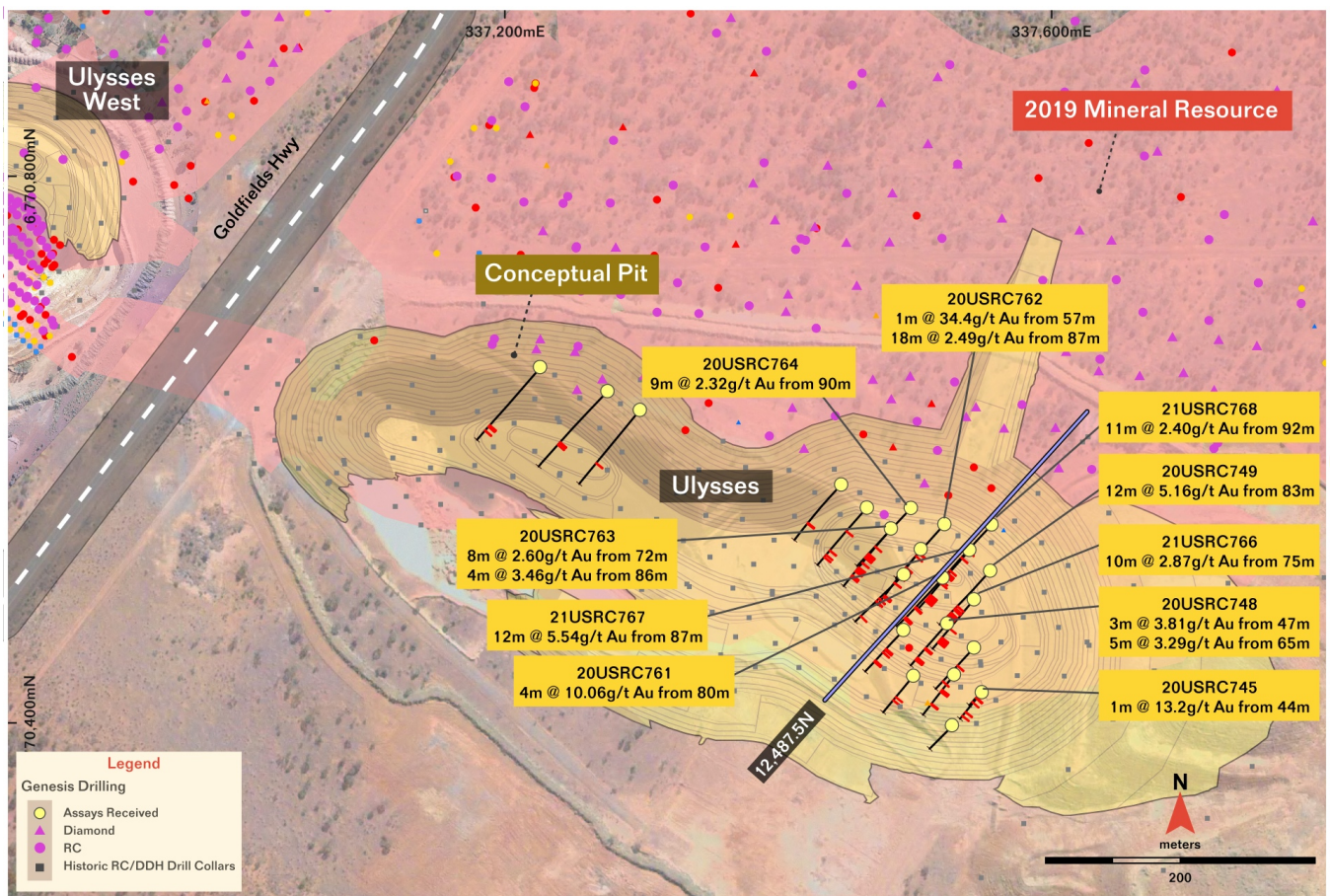


Figure 7. Plan view of Ulysses drilling. New drilling intercepts in dark yellow boxes.

Puzzle North and Puzzle Drilling Results

Post the end of the quarter, Genesis reported strong results from RC drilling at Puzzle North and Puzzle (refer to the ASX announcement dated 9 April 2021).

Results are shown in plan view in Figure 8 and in cross-section (local E-W orientated) in Figure 9.

Significant shallow gold results reported from Puzzle North included:

- 16m @ 1.61g/t Au from 101m to end of hole 21USRC852
- 106m @ 0.71g/t Au from 10m 21USRC853
 - Including 16m @ 1.54g/t Au from 37m
- 41m @ 1.20g/t Au from 38m 21USRC855
 - Including 10m @ 2.77g/t Au from 62m
- 14m @ 2.44g/t Au from 106m to end of hole 21USRC855
- 21m @ 0.72g/t Au from 69m 21USRC856

Gold mineralisation is constrained to the granite immediately adjacent to the moderately east-dipping granite-greenstone contact. Mineralisation is interpreted to be best developed within a zone up to 40 to 50m wide, orientated in a north-south direction and dipping parallel to the granite-greenstone contact. The significant mineralisation drilled to date remains open at depth and along strike and has been defined over ~200m of strike.

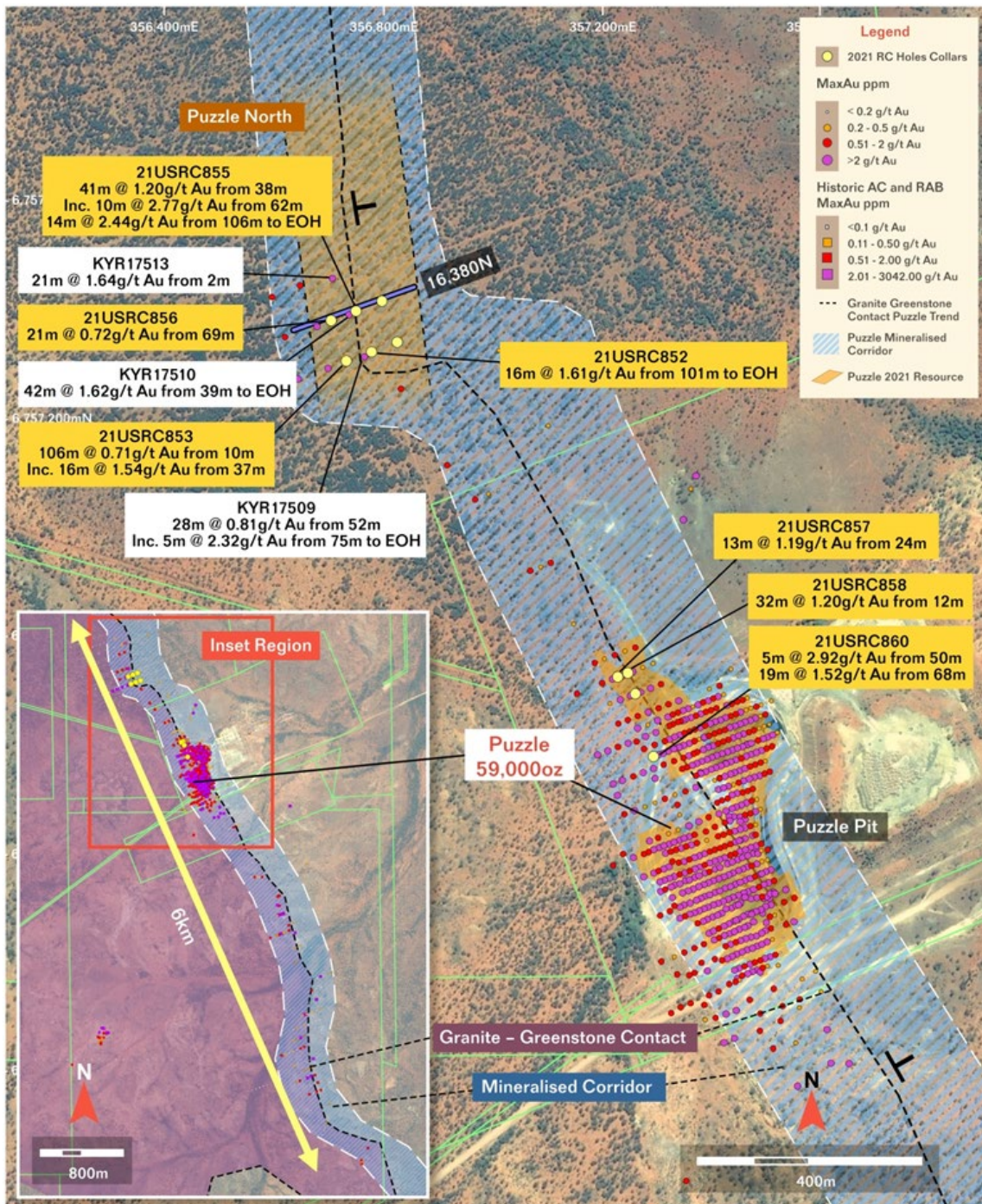


Figure 8. Plan view Puzzle North and Puzzle

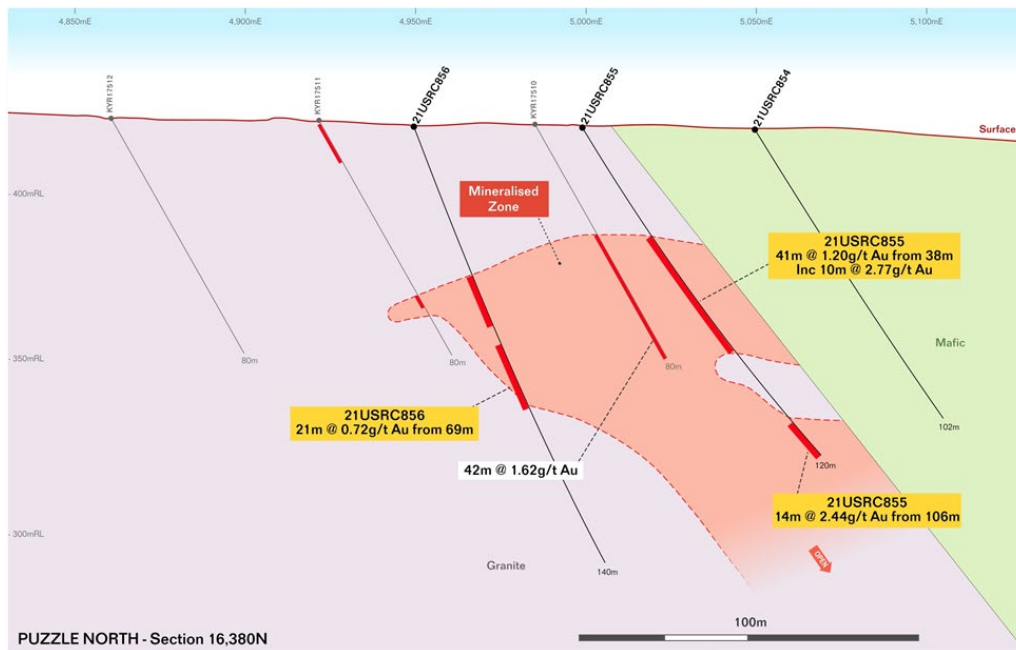


Figure 9. Puzzle North Section 16,380N

Ulysses Project – Feasibility Study

Genesis has continued to progress a Feasibility Study based on the construction of a standalone treatment facility at Ulysses. It is anticipated that the Feasibility Study will consider that mineralisation will be sourced from both underground and open pit sources at Ulysses with a focus on the Admiral-Clark-Butterfly area and Orient Well for initial sources of open pit mineralisation.

Following the completion of the Resource update focus has turned to mining studies.

The Feasibility Study is targeted for completion in the second quarter of CY2021.

Future Drilling Activities

Ongoing RC drilling planned for the June and September quarters in 2021 will target:

- Extensions to the March 2021 Admiral, Clark, Butterfly, King and Butterfly North Resources.
- New discoveries within the Admiral-Clark-Butterfly mine environment.
- Extensions to the Orient Well March 2021 Resource at depth and along strike.
- New discoveries within the Orient Well mine environment targeting repetitions of the felsic volcanic host rock.
- Extensions of the new Puzzle North prospect and extensions and upgrading of the Puzzle Resource.

Air-core drilling for the June quarter will target new discoveries within the Ulysses to Orient Well mine corridor outside of the known resource areas.

DESDEMONA SOUTH JV GOLD PROJECT, WA (Genesis: RTE 80%)

Desdemona South (see Figure 1) comprises a strategically located tenement package covering a total area of ~156km² immediately north of and contiguous with Genesis' 100%-owned 1.6Moz Ulysses Gold Project, and includes a range of exploration targets which will strengthen and expand the Company's growth pipeline in the Leonora region.

The Joint Venture provides Genesis with over 10km of strike of mafic stratigraphy (similar to Ulysses) to explore within the same regional structural corridor that controls gold mineralisation in the district.

Air-core Drilling Program

Aircore drilling is currently being planned to be completed in the June quarter.

BARIMAIA GOLD PROJECT, WA (Genesis: 65%)

The Barimaia Gold Project is located in the Murchison District of Western Australia, 10km south-east of the 6Moz² Mt Magnet Gold Mine, operated by ASX-listed Ramelius Resources Limited .

No exploration activities were completed during the March 2021 Quarter.

COVID-19 UPDATE

Since February 2020, Genesis has been responding to information provided by State and Federal authorities and complying with recommended measures to combat the spread of COVID-19. These include heightened cleaning protocols, social distancing, stringent hygiene practices and health screening. The Company's operations are confined to Western Australia and only personnel and contractors essential to conducting safe exploration activities are permitted. All non-essential travel has ceased.

COVID-19 has the potential to interrupt exploration activities if any of the following occur:

- Notwithstanding the extensive measures taken, sufficient employees or contractors test positive for COVID-19 such that the majority of any crew is unable to attend while they self-isolate;
- Consumable items from critical suppliers is reduced for similar reasons; or
- The WA Government introduces regulations that inhibit our suppliers or employees from attending work.

CORPORATE

Cash

At 31 March 2021, the Company held cash reserves of \$4.1 million. Operating cash outflows for the Quarter included payments for exploration activities of \$3.5 million. Cash outflows from investing activities included payments for the acquisition of the Kookynie tenements of \$10.2 million.

As set out in item 6.1 of the Appendix 5B for the March Quarter, payments to related parties consisting of remuneration paid to the Managing Director and payment of non-executive director fees totalled \$117,000.

Capital Raising

After the end of the quarter, Genesis announced an \$11 million capital raising with firm commitments received for a Placement to raise \$10 million and a Share Purchase Plan to raise up to \$1 million.

TENEMENTS

In accordance with ASX Listing Rule 5.3.3, details of the tenements held at the end of the Quarter are set out in Table 2.

This announcement is authorised for release by the Board of Genesis Minerals.

For further information, visit: www.genesisminerals.com.au or please contact:

Michael Fowler
Managing Director
Genesis Minerals Limited
T: +61 8 9322 6178
E: mfowler@genesisminerals.com.au

² Refer Ramelius Resources' ASX Announcement dated 22 February 2017.

COMPETENT PERSONS' STATEMENTS

The information in this report that relates to Exploration Results is based on information compiled by Mr Michael Fowler who is a full-time employee of the Company, a shareholder of Genesis Minerals Limited and is a member of the Australasian Institute of Mining and Metallurgy. Mr Fowler has sufficient experience which is relevant to the style of mineralisation and type of deposit under consideration and to the activity being undertaken to qualify as a Competent Person as defined in the 2012 Edition of the 'Australasian Code for Reporting of Exploration Results, Mineral Resources and Ore Reserves'. Mr Fowler consents to the inclusion in the report of the matters based on his information in the form and context in which it appears.

The Information in this report that relates to Mineral Resources is based on information compiled by Mr Paul Payne, a Competent Person who is a Fellow of the Australasian Institute of Mining and Metallurgy. Mr Payne is a full-time employee of Payne Geological Services and is a shareholder of Genesis Minerals Limited. Mr Payne has sufficient experience that is relevant to the style of mineralisation and type of deposit under consideration and to the activity being undertaken to qualify as a Competent Person as defined in the 2012 Edition of the "Australasian Code for Reporting of Exploration Results, Mineral Resources and Ore Reserves". Mr Payne consents to the inclusion in the report of the matters based on his information in the form and context in which it appears.

TABLE 1: MINERAL RESOURCE ESTIMATE – ULYSSES GOLD PROJECT**March 2021 Resource Estimate 0.5g/t Cut off above 280mRL 2g/t Below 280mRL**

Deposit	C O G g/t	Measured			Indicated			Inferred			Total		
		Tonnes T	Au g/t	Au Ounces	Tonnes T	Au g/t	Au Ounces	Tonnes T	Au g/t	Au Ounces	Tonnes T	Au g/t	Au Ounces
Ulysses													
High Grade	2.0	658,000	6.1	129,000	908,000	6.3	184,000	188,000	8.2	50,000	1,754,000	6.4	363,000
Shear		137,000	1.3	6,000	2,911,000	2.4	221,000	1,765,000	3.2	183,000	4,813,000	2.6	410,000
Ulysses East					522,000	1.8	29,000	653,000	1.7	36,000	1,175,000	1.7	65,000
Sub Total		795,000	5.3	135,000	4,341,000	3.1	434,000	2,607,000	3.2	269,000	7,743,000	3.4	838,000
ABC													
Admiral	0.5				1,783,000	2.0	112,000	1,671,000	1.4	73,000	3,453,000	1.7	185,000
Clark	0.5				757,000	1.2	30,000	946,000	1.2	35,000	1,703,000	1.2	65,000
Butterfly	0.5				857,000	2.0	55,000	779,000	1.4	35,000	1,636,000	1.7	89,000
Butterfly North	0.5							623,000	1.4	28,000	623,000	1.4	28,000
King	0.5				1,305,000	1.0	42,000	591,000	1.0	20,000	1,896,000	1.0	62,000
Danluce	0.5							958,000	0.9	28,000	958,000	0.9	28,000
Historic Stockpiles								80,000	1.1	3,000	80,000	1.1	3,000
Sub Total					4,702,000	1.6	238,000	5,649,000	1.2	221,000	10,351,000	1.4	459,000
Orient Well													
Orient Well	0.5				3,605,000	1.1	123,000	1,833,000	1.1	66,000	5,438,000	1.1	189,000
OW Laterites	0.3				142,000	0.6	3,000	177,000	0.7	4,000	319,000	0.7	7,000
Orient Well East	0.5							457,000	1.3	19,000	457,000	1.3	19,000
Orient Well NW	0.5							603,000	1.2	23,000	603,000	1.2	23,000
Double J	0.3				434,000	0.7	10,000	25,000	0.5	400	459,000	0.7	10,000
Sub Total					4,180,000	1.0	136,000	3,094,000	1.1	112,000	7,274,000	1.1	247,000
Kookynie													
Puzzle	0.5				1,002,000	1.1	36,000	725,000	1.0	23,000	1,727,000	1.1	59,000
Historic Stockpile					175,000	0.7	4,000				175,000	0.7	4,000
Sub Total					1,177,000	1.1	40,000	725,000	1.0	23,000	1,902,000	1.0	63,000
Project Total		795,000	5.3	135,000	14,400,000	1.8	849,000	12,075,000	1.6	625,000	27,270,000	1.8	1,608,000

NB. Rounding discrepancies may occur

Full details of the Ulysses Mineral Resource estimate are provided in the Company's ASX announcement dated 29 March 2021 titled "Ulysses Mineral Resource Increases to 1.6 Million Ounces Following Continued Drilling Success".

The Company confirms that it is not aware of any new information or data that materially affects the information included in the original market announcements dated 29 March 2021 and the Company confirms that all material assumptions and technical parameters underpinning the mineral resource estimates in the market announcements continue to apply and have not materially changed. The Company confirms that the form and context in which the Competent Persons' findings are presented have not materially changed from the original market announcements.

TABLE 2: SCHEDULE OF EXPLORATION TENEMENTS HELD AS AT 31 MARCH 2021

Project	Location	Tenement ID	Interest at Start of Quarter (%)	Interest at End of Quarter (%)
Ulysses	Western Australia	E40/295	100	100
Ulysses	Western Australia	E40/312	100	100
Ulysses	Western Australia	E40/333	100	100
Ulysses	Western Australia	E40/359	100	100
Ulysses	Western Australia	E40/371	100	100
Ulysses	Western Australia	M40/166	100	100
Ulysses	Western Australia	P37/9140	100	100
Ulysses	Western Australia	P37/9141	100	100
Ulysses	Western Australia	P37/9142	100	100
Ulysses	Western Australia	P40/1449	100	100
Ulysses	Western Australia	P40/1457	100	100
Ulysses	Western Australia	P40/1342	100	100
Ulysses	Western Australia	P40/1343	100	100
Ulysses	Western Australia	P40/1396	100	100
Kookynie	Western Australia	E40/229	Note 1	Note 1
Kookynie	Western Australia	E40/263	Note 1	Note 1
Kookynie	Western Australia	E40/281	Note 1	Note 1
Kookynie	Western Australia	E40/291	Note 1	Note 1
Kookynie	Western Australia	E40/292	Note 1	Note 1
Kookynie	Western Australia	E40/306	Note 1	Note 1
Kookynie	Western Australia	E40/316	Note 1	Note 1
Kookynie	Western Australia	E40/346	Note 1	Note 1
Kookynie	Western Australia	E40/347	Note 1	Note 1
Kookynie	Western Australia	E40/368	Note 1	Note 1
Kookynie	Western Australia	E40/375	Note 1	Note 1
Kookynie	Western Australia	G40/4	Note 1	Note 1
Kookynie	Western Australia	G40/5	Note 1	Note 1
Kookynie	Western Australia	G40/6	Note 1	Note 1
Kookynie	Western Australia	G40/7	Note 1	Note 1
Kookynie	Western Australia	L40/7	Note 1	Note 1
Kookynie	Western Australia	L40/10	Note 1	Note 1
Kookynie	Western Australia	L40/11	Note 1	Note 1
Kookynie	Western Australia	L40/12	Note 1	Note 1
Kookynie	Western Australia	L40/15	Note 1	Note 1
Kookynie	Western Australia	L40/17	Note 1	Note 1
Kookynie	Western Australia	L40/18	Note 1	Note 1
Kookynie	Western Australia	L40/19	Note 1	Note 1
Kookynie	Western Australia	L40/20	Note 1	Note 1
Kookynie	Western Australia	L40/21	Note 1	Note 1
Kookynie	Western Australia	L40/22	Note 1	Note 1
Kookynie	Western Australia	M40/2	Note 1	Note 1
Kookynie	Western Australia	M40/3	Note 1	Note 1

Kookynie	Western Australia	M40/8	Note 1	Note 1
Kookynie	Western Australia	M40/20	Note 1	Note 1
Kookynie	Western Australia	M40/26	Note 1	Note 1
Kookynie	Western Australia	M40/56	Note 1	Note 1
Kookynie	Western Australia	M40/94	Note 1	Note 1
Kookynie	Western Australia	M40/101	Note 1	Note 1
Kookynie	Western Australia	M40/107	Note 1	Note 1
Kookynie	Western Australia	M40/110	Note 1	Note 1
Kookynie	Western Australia	M40/117	Note 1	Note 1
Kookynie	Western Australia	M40/120	Note 1	Note 1
Kookynie	Western Australia	M40/136	Note 1	Note 1
Kookynie	Western Australia	M40/137	Note 1	Note 1
Kookynie	Western Australia	M40/148	Note 1	Note 1
Kookynie	Western Australia	M40/151	Note 1	Note 1
Kookynie	Western Australia	M40/163	Note 1	Note 1
Kookynie	Western Australia	M40/164	Note 1	Note 1
Kookynie	Western Australia	M40/174	Note 1	Note 1
Kookynie	Western Australia	M40/192	Note 1	Note 1
Kookynie	Western Australia	M40/196	Note 1	Note 1
Kookynie	Western Australia	M40/209	Note 1	Note 1
Kookynie	Western Australia	M40/288	Note 1	Note 1
Kookynie	Western Australia	M40/289	Note 1	Note 1
Kookynie	Western Australia	M40/290	Note 1	Note 1
Kookynie	Western Australia	M40/291	Note 1	Note 1
Kookynie	Western Australia	M40/292	Note 1	Note 1
Kookynie	Western Australia	M40/293	Note 1	Note 1
Kookynie	Western Australia	M40/339	Note 1	Note 1
Kookynie	Western Australia	M40/340	Note 1	Note 1
Kookynie	Western Australia	M40/342	Note 1	Note 1
Kookynie	Western Australia	M40/343	Note 1	Note 1
Kookynie	Western Australia	M40/344	Note 1	Note 1
Kookynie	Western Australia	M40/345	Note 1	Note 1
Kookynie	Western Australia	P40/1272	Note 1	Note 1
Kookynie	Western Australia	P40/1300	Note 1	Note 1
Kookynie	Western Australia	P40/1301	Note 1	Note 1
Kookynie	Western Australia	P40/1302	Note 1	Note 1
Kookynie	Western Australia	P40/1303	Note 1	Note 1
Kookynie	Western Australia	P40/1427	Note 1	Note 1
Kookynie	Western Australia	P40/1428	Note 1	Note 1
Kookynie	Western Australia	P40/1433	Note 1	Note 1
Kookynie	Western Australia	P40/1434	Note 1	Note 1
Kookynie	Western Australia	P40/1435	Note 1	Note 1
Kookynie	Western Australia	P40/1436	Note 1	Note 1
Kookynie	Western Australia	P40/1437	Note 1	Note 1
Kookynie	Western Australia	P40/1438	Note 1	Note 1
Kookynie	Western Australia	P40/1439	Note 1	Note 1

Kookynie	Western Australia	P40/1440	Note 1	Note 1
Kookynie	Western Australia	P40/1441	Note 1	Note 1
Kookynie	Western Australia	P40/1442	Note 1	Note 1
Kookynie	Western Australia	P40/1444	Note 1	Note 1
Kookynie	Western Australia	P40/1445	Note 1	Note 1
Kookynie	Western Australia	P40/1446	Note 1	Note 1
Kookynie	Western Australia	P40/1447	Note 1	Note 1
Kookynie	Western Australia	P40/1454	Note 1	Note 1
Desdemona South	Western Australia	E37/1326	Note 2	Note 2
Desdemona South	Western Australia	E40/283	Note 2	Note 2
Desdemona South	Western Australia	E40/285	Note 2	Note 2
Desdemona South	Western Australia	E40/323	Note 2	Note 2
Desdemona South	Western Australia	E40/366	Note 2	Note 2
Desdemona South	Western Australia	E40/369	Note 2	Note 2
Desdemona South	Western Australia	M40/346	Note 2	Note 2
Desdemona South	Western Australia	P40/1464	Note 2	Note 2
Barimaia	Western Australia	E58/497	Note 3	Note 3
Barimaia	Western Australia	M58/361	Note 3	Note 3
Barimaia	Western Australia	P58/1654	Note 3	Note 3
Barimaia	Western Australia	P58/1655	Note 3	Note 3
Barimaia	Western Australia	P58/1687	Note 3	Note 3
Barimaia	Western Australia	P58/1688	Note 3	Note 3
Barimaia	Western Australia	P58/1689	Note 3	Note 3
Barimaia	Western Australia	P58/1690	Note 3	Note 3
Barimaia	Western Australia	P58/1691	Note 3	Note 3
Barimaia	Western Australia	P58/1692	Note 3	Note 3
Barimaia	Western Australia	P58/1751	Note 3	Note 3
Barimaia	Western Australia	P58/1752	Note 3	Note 3
Barimaia	Western Australia	P58/1762	Note 3	Note 3
Barimaia	Western Australia	P58/1763	Note 3	Note 3
Barimaia	Western Australia	P58/1764	Note 3	Note 3
Barimaia	Western Australia	P58/1765	Note 3	Note 3

Notes:

- 1: The Company has an interest in the Kookynie Gold Project tenements pursuant to a binding option agreement to acquire a 100% interest. Refer to the Company's ASX announcement dated 24 June 2020 titled "*Transformational Acquisition of the Kookynie Gold Project*" for full details of the acquisition. Genesis completed the acquisition of the Kookynie tenements on 12 January 2021 with all conditions precedent to the transaction satisfied or waived.
- 2: The Company holds the right to earn-in to an initial 60 per cent interest in the Desdemona South JV Gold Project, with the potential to earn up to a maximum 80 per cent stake.
- 3: The Company has earned a 65 per cent interest in the Barimaia Gold Project (the Mt Magnet JV).

FORWARD LOOKING STATEMENTS

Some statements in this report regarding estimates or future events are forward looking statements. They include indications of, and guidance on, future earnings, cash flow, costs and financial performance. Forward looking statements include, but are not limited to, statements preceded by words such as "planned", "expected", "projected", "estimated", "may", "scheduled", "intends", "anticipates", "believes", "potential", "could", "nominal", "conceptual" and similar expressions. Forward looking statements, opinions and estimates included in this report are based on assumptions and contingencies which are subject to change without notice, as are statements about market and industry trends, which are based on interpretations of current market conditions. Forward looking statements are

provided as a general guide only and should not be relied on as a guarantee of future performance. Forward looking statements may be affected by a range of variables that could cause actual results to differ from estimated results, and may cause the Company's actual performance and financial results in future periods to materially differ from any projections of future performance or results expressed or implied by such forward looking statements. These risks and uncertainties include but are not limited to liabilities inherent in mine development and production, geological, mining and processing technical problems, the inability to obtain any additional mine licenses, permits and other regulatory approvals required in connection with mining and third party processing operations, competition for among other things, capital, acquisition of reserves, undeveloped lands and skilled personnel, incorrect assessments of the value of acquisitions, changes in commodity prices and exchange rate, currency and interest fluctuations, various events which could disrupt operations and/or the transportation of mineral products, including labour stoppages and severe weather conditions, the demand for and availability of transportation services, the ability to secure adequate financing and management's ability to anticipate and manage the foregoing factors and risks. There can be no assurance that forward looking statements will prove to be correct.

This report has been prepared in compliance with the JORC Code (2012) and the ASX Listing Rules.

The Company has concluded it has a reasonable basis for providing the forward looking statements included in this report, including with respect to any production targets and financial estimates, based on the information contained in this report.

This report has been prepared by Genesis Minerals Limited. This document contains background information current at the date of this report. The report is in summary form and does not purport to be all-inclusive or complete.

Recipients should conduct their own investigations and perform their own analysis in order to satisfy themselves as to the accuracy and completeness of the information, statements and opinions contained in this report.

The report is for information purposes only. Neither this report nor the information contained in it constitutes an offer, invitation, solicitation or recommendation in relation to the purchase or sales of shares in any jurisdiction. The report may not be distributed in any jurisdiction except in accordance with the legal requirements applicable in such jurisdiction. Recipients should inform themselves of the restrictions that apply to their own jurisdiction as a failure to do so may result in a violation of securities laws in such jurisdiction.

This report does not constitute investment advice and has been prepared without considering the recipients investment objectives, financial circumstances or particular needs and the opinions and recommendations in this report are not intended to represent recommendations of particular investments to particular persons.

Recipients should seek professional advice when deciding if an investment is appropriate. All securities transactions involve risks, which include (among others) the risk of adverse or unanticipated market, financial or political developments. To the fullest extent of the law, the Company, its officers, employees, agents and advisors do not make any representation or warranty, express or implied, as to the currency, accuracy, reliability or completeness of any information, statements, opinion, estimates, forecasts or other representations contained in this report. No responsibility for any errors or omissions from the report arising out of negligence or otherwise is accepted.