



ASX Announcement: 21 May 2021

## SIGNIFICANT NEW DRILL RESULTS CONFIRM CONTINUITY OF HIGH-GRADE MINERALISATION AT EVERMORE

*Plus, drill core observations from recent diamond drilling highlight the potential for steeply-dipping high-grade lodes at depth*

### HIGHLIGHTS

- New high-grade assay results returned from Reverse Circulation (RC) drilling at the emerging Evermore prospect, part of the 100%-owned Gidgee Gold Project in WA:
  - **GRC635:** 4 metres @ 10.1g/t Au from 132m
  - **GRC654:** 3 metres @ 2.2g/t Au from 129m
  - **GRC637:** 7 metres @ 1.7g/t Au from 114m
  - **GRC656:** 7 metres @ 1.4g/t Au from 69m
- The high-grade intercept in GRC635 is located between previously reported intersections of<sup>1</sup>:
  - **GRC630:** 7 metres @ 11.7g/t Au from 97m\*
  - **GRC651:** 12 metres @ 5.6g/t Au from 78m, including 4m @ 13.2g/t Au\*

\*historical results
- The intersection in GRC635 potentially represents a new mineralised structure which is steeply east-dipping and outside of the targeted moderately west dipping shear zone. This interpretation is consistent with observations from diamond drill holes which are currently pending assay.
- The recognition of this steep easterly-dipping orientation has opened up the potential to delineate high-grade mineralisation at depth at Evermore. In addition, it means that the majority of the RC drilling undertaken to date has only sporadically tested the prospective structure because of its easterly orientation.
- Other intersections have further confirmed the consistency of mineralisation within the moderately west-dipping shears, which can be traced over the entire ~1.6km strike length at Evermore.
- The current phase of RC and diamond drilling has now been completed, with all samples submitted for assay. A significant number of assays are still pending, including all diamond core samples.

Gateway Mining Limited (ASX: GML) (**Gateway** or **Company**) is pleased to report further highly encouraging assay results from Reverse Circulation (RC) drilling at the emerging high-grade Evermore prospect, part of its 100%-owned **Gidgee Gold Project** in Western Australia.

The latest results have confirmed the continuity of the main high-grade zone, while recent drill core observations from diamond drilling have evolved the Company's geological understanding of the Evermore prospect, highlighting the presence of a steeply east-dipping orientation to the high-grade zone.

This has opened up a significant opportunity to delineate further high-grade mineralisation at depth by changing the orientation of the drilling. Several RC holes have recently been completed to test this interpretation, with assay results awaited.

The drilling was completed as part of a broader RC and diamond drilling program targeting Evermore and other prospective areas of the Northwest Margin target area at Gidgee. The new assay results relate to a further 16 RC holes drilled at Evermore, as part of the overall program of 91 RC holes completed for 14,311m at both the

<sup>1</sup> See ASX announcements dated 22 January 2021 and 28 April 2021

Evermore prospect and the southern continuation of prospective geology between the 120,000oz Montague-Boulder Inferred Mineral Resource (1.7Mt @ 2.2g/t Au)<sup>2</sup> and the historic Caledonian NE pit (see Figure 1).

In addition, a total of six diamond drill-holes for 2,550m were completed at Evermore as well as selected sites for stratigraphic drilling co-funded by the WA State Government Exploration Incentive Scheme (EIS).

A full description of significant intersections received to date is included as Table 1, with drill program details documented in the JORC (2012) Table 1 included as Appendix 2.

## KEY POINTS:

- Drilling of the Evermore RC program commenced in February 2021, as part of a broader RC and diamond drilling campaign along the Northwest Margin of the Montague Granodiorite. Drilling at Evermore was designed with two objectives. The first was to in-fill around the significant high-grade intersections from the 2020 RC campaign within the Lower Zone to confirm the Company's geological understanding of the mineralisation controls. The second was to step-out from these intersections both along strike and down-dip, testing the newly defined layered mafic-ultramafic intrusion along the margin of the Montague Granodiorite.
- Drilling was designed to in-fill to approximately 40m x 40m around the previously received intersections, and drill 40m spaced holes on nominal 80m spaced sections stepping out to the south and north along the granodiorite margin (see Figure 2).
- Several significant intersections have been returned, including:
  - **GRC635:** 4 metres @ 10.1g/t Au from 132m
  - **GRC654:** 3 metres @ 2.2g/t Au from 129m
  - **GRC637:** 7 metres @ 1.7g/t Au from 114m
  - **GRC656:** 7 metres @ 1.4g/t Au from 69m
- The intersection in GRC635 is located between the previously reported intersections of<sup>3</sup>:
  - **GRC630:** 7 metres @ 11.7g/t Au from 97m\*
  - **GRC651:** 12 metres @ 5.6g/t Au from 78m, including 4m @ 13.2g/t Au\*

\*historical results
- The intersection in GRC635 is located outside of the previous interpretation of potential "stacked" moderately west-dipping lodes. This is consistent with observations made in diamond drilling completed to date (for which assays are still pending), which indicate that steep easterly-dipping high-grade structures associated with quartz sulphide veining are located below the interpreted moderately west-dipping shear zone previously intersected (see Figures 3 and 4). Sulphides present include pyrite, chalcopyrite and rare galena.
- This interpretation of steep and moderately dipping mineralised structures is consistent with that observed elsewhere at Gidgee at the Achilles and Whistler prospects (and remains untested at the Montague-Boulder deposit), and highlights Gateway's belief that mineralisation along the Northwest Margin of the Montague Granodiorite is part of a much broader gold mineralised system.
- These new observations are significant in that the depth potential of mineralisation is now completely open, and has not been effectively tested by the majority of the easterly-dipping RC holes completed to date.
- Following these observations, additional RC holes were completed at the end of the RC program testing this steep orientation, with all assays still pending.
- Other significant intersections reported, including those in GRC654, GRC637 and GRC656, are consistent with the targeted moderately west-dipping mineralised shear zones, which have been successfully targeted along the approximately 1.6km long Evermore trend.
- These new RC assay results and visual observations from diamond drill-core are significant in that they highlight the growing understanding by the Company's exploration team of the geological controls to the mineralisation present along the exciting 1.6km strike extent of the Evermore prospect.
- Drilling of RC and diamond programs has now been completed. The majority of the diamond core has been cut and sampled and submitted to the laboratory along with all RC samples. Results are pending.

<sup>2</sup> 1,700,000 tonnes at 2.23 g/t for 120,000 ounces. See ASX announcement dated 3 October 2019.

<sup>3</sup> See ASX announcements dated 22 January 2021 and 28 April 2021.

**Exploration Activities Update**

Following completion of the RC and diamond drilling program, field staff have continued with related activities including surveying of drill collars and rehabilitation of drill sites. A small soil geochemical sampling program on the eastern side of the Montague Granodiorite is planned to be completed prior to the planned resumption of drilling activities.

While remaining assays from the recent RC and diamond drilling are received and processed over the coming weeks, the Company will move ahead with the next phase of exploration activity including a major 20,000m air-core drilling campaign, which is planned to commence in mid-June. This program will cover the southern continuation of the Achilles mineralised trend, as well as other early-stage target areas proximal to the Montague Granodiorite system.

In the meantime, planning will continue for the next key phase of drilling at the Evermore prospect.

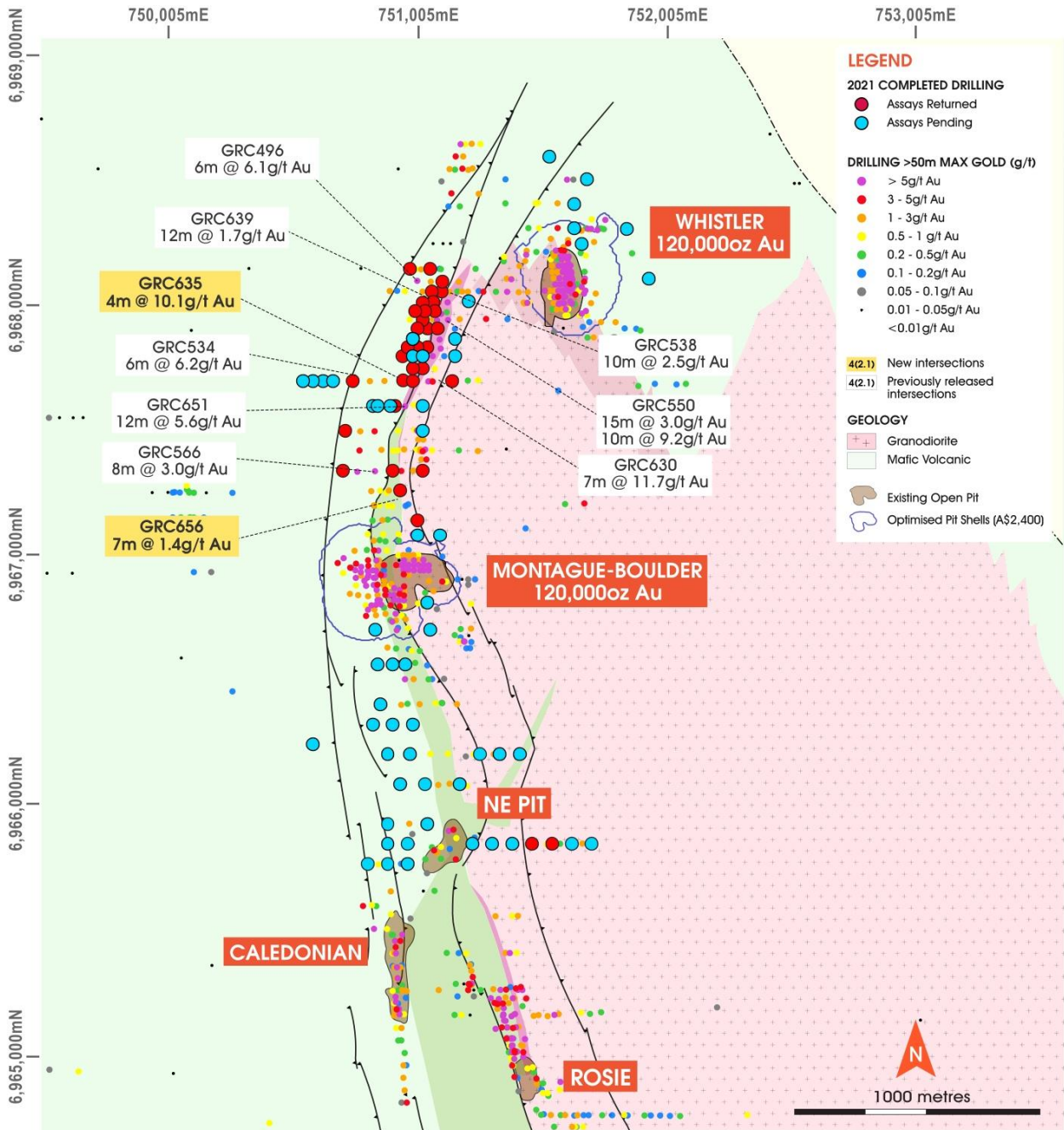


Figure (1): Northwest Corridor, including Evermore drill program with existing drill results in holes greater than 50m deep

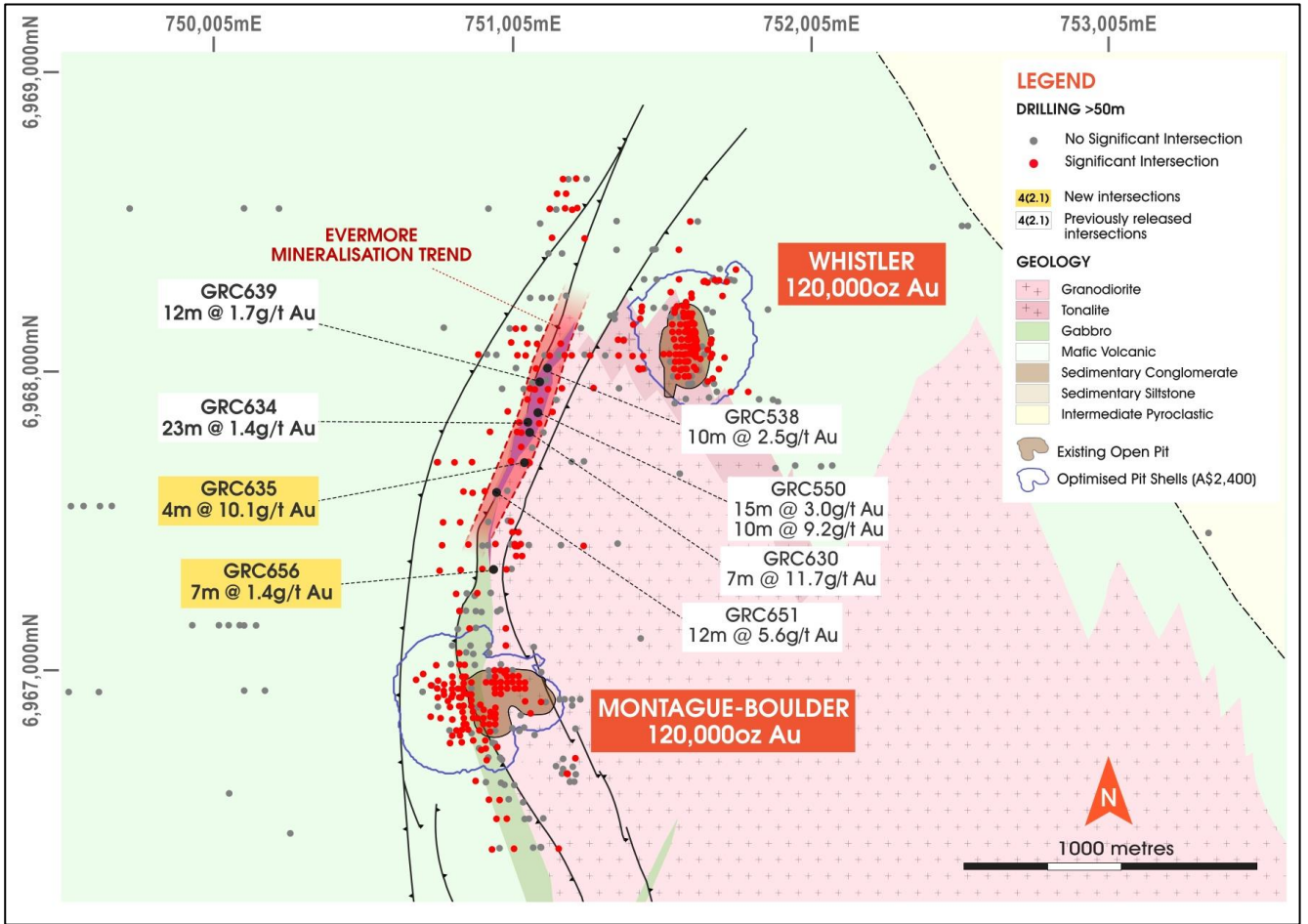


Figure (2): Evermore Prospect RC drilling with new significant intercepts (yellow labels) and previous announced “Lower Zone” intersections (white labels)

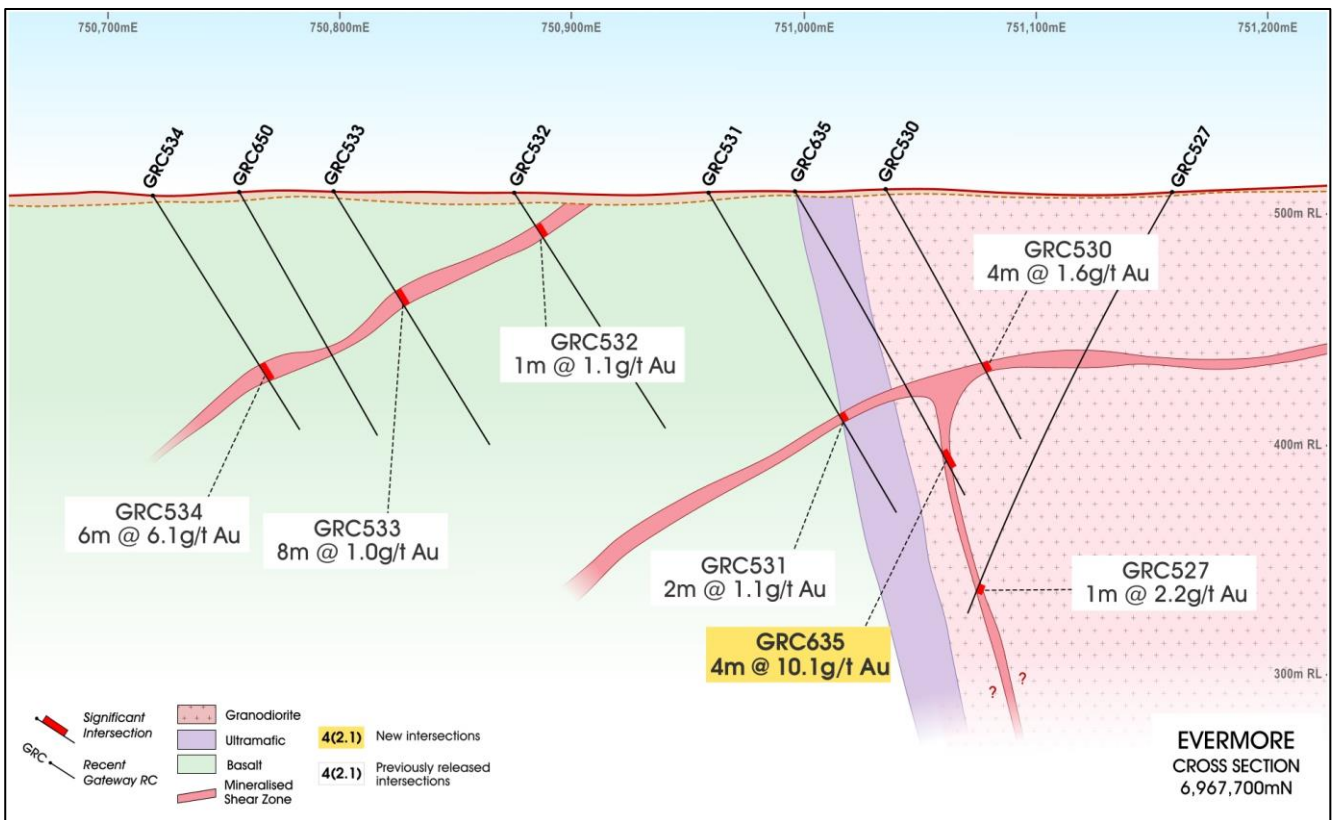


Figure (3): RC drill cross-section 6,967,700mN

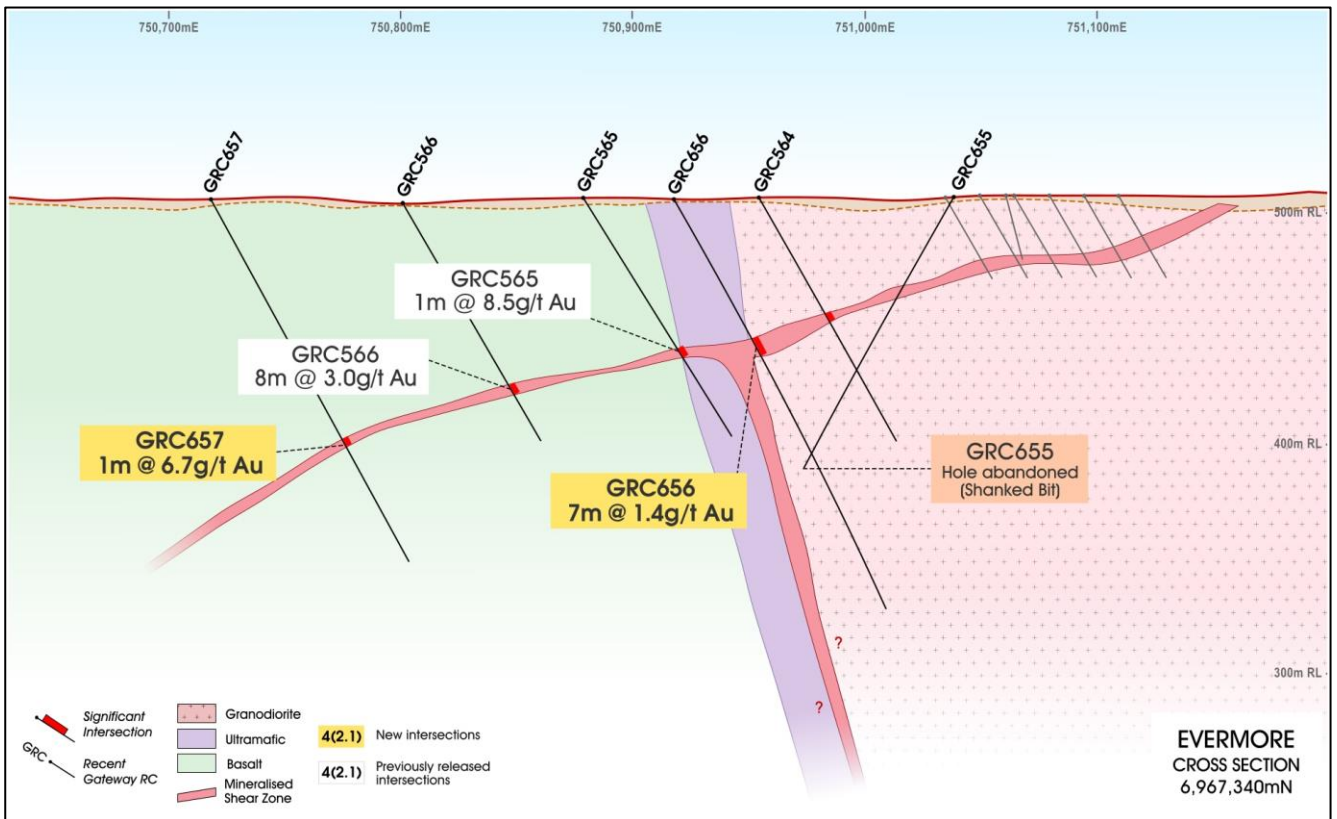


Figure (3): RC drill cross-section 6,967,340mN

## MANAGEMENT COMMENT

Gateway's Managing Director, Mr Mark Cossom, said: "We are continuing to put the pieces of the geological puzzle in place at the exciting Evermore prospect, where we are continuing to see all the indicators of a major gold system. The combination of these new assays, together with visual observations from diamond drilling, gives us growing confidence that we are getting a lot closer to unravelling the geological code in this exciting area.

"The significant new intercept of 4m at 10.1g/t sits between two previously reported intercepts of 7m at 11.7g/t and 12m at 5.6g/t including 4m at 13.2g/t, confirming the continuity of high-grade mineralisation over a total strike length of over 420 metres.

"Perhaps even more importantly, the recent diamond drilling has opened our eyes to what appears to be a steeply easterly-dipping structure below the previously delineated west-dipping shear zone. The obvious conclusion from this is that most of our RC drilling to date has not been optimally oriented to test this structure. We have therefore completed a further 5 RC holes at the end of the program to test this interpretation and we are eagerly awaiting the results. If confirmed, this opens up the potential to delineate high-grade mineralisation at depth over a significant area."

This released has been authorised by:

Mark Cossom  
Managing Director

**For and on behalf of  
GATEWAY MINING LIMITED**

## **Competent Person Statement**

The information in this report that relates to Exploration Results or Mineral Resources is based on information compiled or reviewed by Mr Mark Cossom who is a full-time employee of Gateway Mining Ltd and is a current Member of the Australian Institute of Mining and Metallurgy. Mr Cossom owns shares and options in Gateway Mining Ltd. Mr Cossom has sufficient experience, which is relevant to the style of mineralisation and types of deposit under consideration and to the activities undertaken, to qualify as a Competent Person as defined in the 2012 Edition of the "Australasian Code of Reporting of Exploration Results, Mineral Resources and Ore Reserves". Mr Cossom consents to the inclusion in the report of the matters based on the information in the form and context in which it appears.

### **Investors**

**Mark Cossom**

**Managing Director**

**T: 02 8316 3998**

**or**

**Kar Chua**

**Company Secretary**

**T: 02 8316 3998**

### **Media**

**Nicholas Read**

**Read Corporate**

**T: 08 9388 1474**

**TABLE (1): EVERMORE RC DRILLING SIGNIFICANT INTERCEPT TABLE**

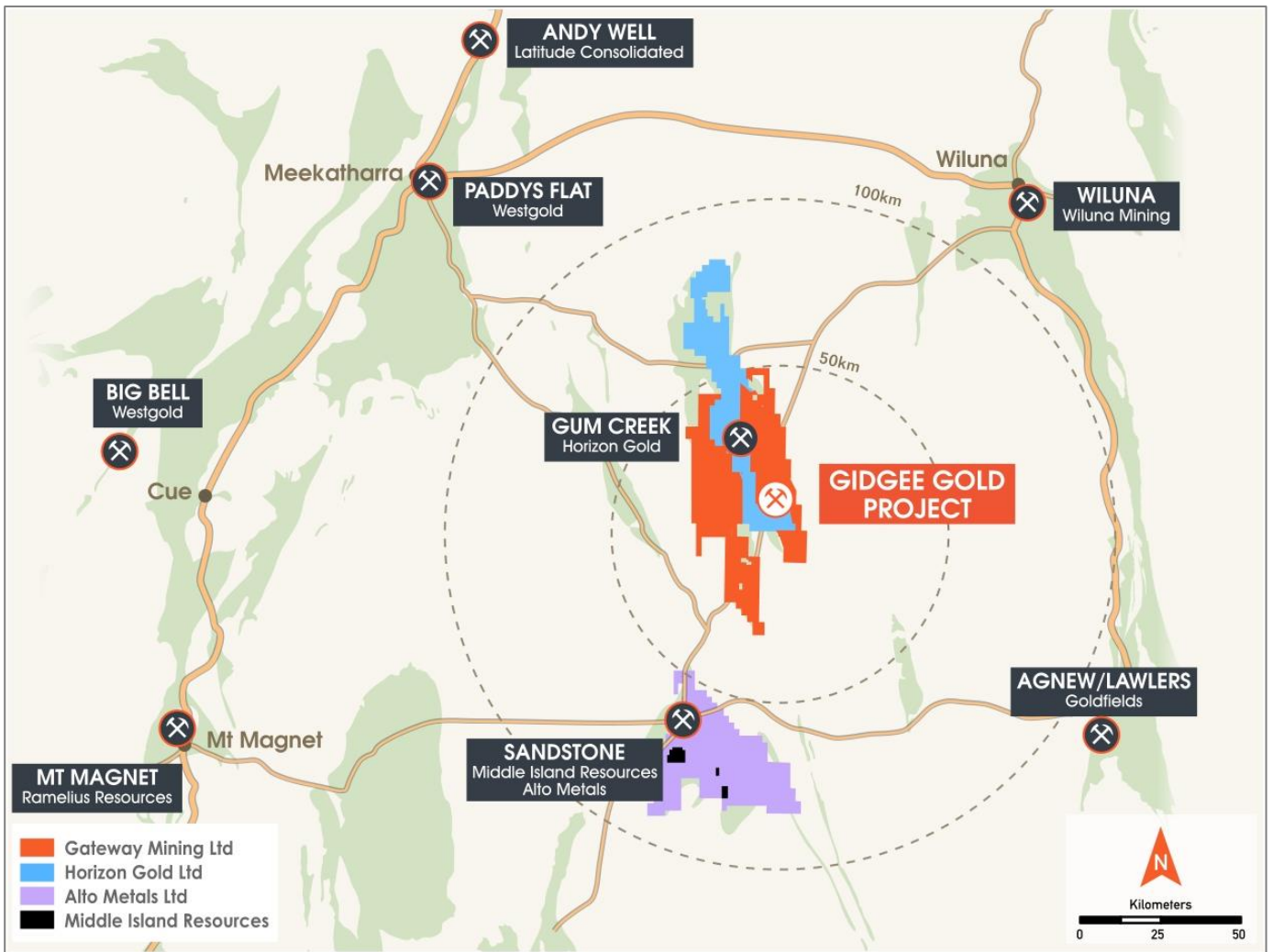
Hole ID	Prospect	MGA_E	MGA_N	RL	Dip/Azi	Hole Depth (m)	From (m)	To (m)	Width (m)	Au (g/t)	Comment
GRC495	Evermore	751077.75	6968058.5	512	-60\090	182	138	140	2	1.4	Re-entry 78m - 182m
GRC531	Evermore	750961.625	6967701.5	512	-60\090	160				NSA	Re-entry 120m - 160m
GRC635	Evermore	751000	6967700	512	-60\090	150	<b>132</b>	<b>134</b>	<b>4</b>	<b>10.1</b>	
GRC637	Evermore	751040	6967945	512	-60\090	170	<b>114</b>	<b>121</b>	<b>7</b>	<b>1.7</b>	
GRC641	Evermore	751020	6967910	512	-60\090	194	108	109	1	1.3	
							114	116	2	1.2	
GRC642	Evermore	751120	6968100	512	-60\090	194	132	133	1	2.8	
							193	194	1	2	
GRC647	Evermore	750960	6967800	512	-60\090	200	157	158	1	3.2	
GRC648	Evermore	751100	6967910	512	-60\090	150					
GRC649	Evermore	750980	6967835	512	-60\090	200	119	120	1	1.4	
							135	136	1	4.3	
GRC650	Evermore	750760	6967700	512	-60\090	120				NSA	
GRC654	Evermore	750730	6967500	512	-60\090	200	<b>129</b>	<b>132</b>	<b>3</b>	<b>2.2</b>	
							173	174	1	2.3	
GRC659	Evermore	751020	6967140	512	-60\270	150	23	24	1	1.4	
							27	28	1	1.4	
							33	34	1	1.3	
							38	39	1	1.7	
GRC656	Evermore	750920	6967340	512	-60\270	200	<b>69</b>	<b>76</b>	<b>7</b>	<b>1.4</b>	
							95	96	1	1.5	
GRC657	Evermore	750720	6967340	512	-60\270	180	93	94	1	2.7	
							120	121	1	6.7	
GRC658	Evermore	750950	6967260	512	-90\000	140				NSA	
GRC662	Evermore	750900	6965760	512	-60\090	160				NSA	

**Notes:**

- All coordinates located in MGA (GDA94) Zone 50. Azimuth is magnetic degrees
- RL's are nominal
- Significant intersections are calculated as a minimum of 1m greater than 1.0g/t Au with a maximum of 4m of internal dilution
- Au assayed by 50g Fire Assay with AAS finish at ALS Laboratories Perth and Kalgoorlie

# APPENDIX (1)

## About the Gidgee Gold Project



Gidgee Gold Project Tenement Location Diagram

**APPENDIX (2): EVERMORE RC DRILLING**  
**JORC Code, 2012 Edition**  
**Table 1**

**Section 1 Sampling Techniques and Data**  
*(Criteria in this section apply to all succeeding sections)*

Criteria	JORC Code explanation	Commentary
<b>Sampling techniques</b>	<ul style="list-style-type: none"> <li>• <i>Nature and quality of sampling (e.g. cut channels, random chips, or specific specialised industry standard measurement tools appropriate to the minerals under investigation, such as down hole gamma sondes, or handheld XRF instruments, etc.). These examples should not be taken as limiting the broad meaning of sampling.</i></li> <li>• <i>Include reference to measures taken to ensure sample representivity and the appropriate calibration of any measurement tools or systems used.</i></li> <li>• <i>Aspects of the determination of mineralisation that are Material to the Public Report.</i></li> <li>• <i>In cases where 'industry standard' work has been done this would be relatively simple (e.g. 'reverse circulation drilling was used to obtain 1 m samples from which 3 kg was pulverized to produce a 30 g charge for fire assay'). In other cases more explanation may be required, such as where there is coarse gold that has inherent sampling problems. Unusual commodities or mineralisation types (e.g. submarine nodules) may warrant disclosure of detailed information.</i></li> </ul>	<ul style="list-style-type: none"> <li>• RC drilling (GRC prefix) - 2kg - 3kg samples were split from dry 1m bulk samples. The sample was initially collected from the cyclone in an inline collection box. Once the metre was completed the sample was dropped under gravity through a Metzke cone splitter, with the 1m split for assay collected in a calico bag.</li> <li>• The bulk reject from the sample was collected in wheelbarrows and dumped into neat piles on the ground.</li> <li>• Field duplicates were collected at a ratio of 1:50 and collected at the same time as the original sample through the B chute of the cone splitter. OREAS certified reference material (CRM) was inserted at a ratio of 1:50. The grade ranges of the CRM's were selected based on grade populations and economic grade ranges.</li> </ul>
<b>Drilling techniques</b>	<ul style="list-style-type: none"> <li>• <i>Drill type (e.g. core, reverse circulation, open-hole hammer, rotary air blast, auger, Bangka, sonic, etc.) and details (e.g. core diameter, triple or standard tube, depth of diamond tails, face-sampling bit or other type, whether core is oriented and if so, by what method, etc.).</i></li> </ul>	<ul style="list-style-type: none"> <li>• RC – Challenge Drilling drill rig was used. The rig consisted of a truck mounted RC rig with on board compressor, an on board Booster, and a truck mounted auxiliary compressor.</li> </ul>
<b>Drill sample recovery</b>	<ul style="list-style-type: none"> <li>• <i>Method of recording and assessing core and chip sample recoveries and results assessed.</i></li> <li>• <i>Measures taken to maximize sample recovery and ensure representative nature of the samples.</i></li> <li>• <i>Whether a relationship exists between sample recovery and grade and whether sample bias may have occurred due to preferential loss/gain of fine/coarse material.</i></li> </ul>	<ul style="list-style-type: none"> <li>• During the RC sample collection process, the sample sizes were visually inspected to assess drill recoveries</li> <li>• The majority of samples were of good quality with ground water having minimal effect on sample quality or recovery.</li> <li>• From the collection of recovery data, no identifiable bias exists.</li> </ul>
<b>Logging</b>	<ul style="list-style-type: none"> <li>• <i>Whether core and chip samples have been geologically and geotechnically logged to a level of detail to support appropriate Mineral Resource estimation, mining studies and metallurgical studies.</i></li> <li>• <i>Whether logging is qualitative or quantitative in nature. Core (or costean, channel, etc.) photography.</i></li> </ul>	<ul style="list-style-type: none"> <li>• RC chips were washed and stored in chip trays in 1m intervals for the entire length of each hole. Chips were visually inspected and logged to record lithology, weathering, alteration, mineralisation, veining and structure.</li> <li>• Data on rock type, deformation, colour, structure, alteration, veining, mineralisation and oxidation state were recorded.</li> <li>• Logging is both qualitative and quantitative or semi quantitative in nature.</li> </ul>

Criteria	JORC Code explanation	Commentary
	<ul style="list-style-type: none"> <li>The total length and percentage of the relevant intersections logged.</li> </ul>	
<b>Sub-sampling Techniques and sample preparation</b>	<ul style="list-style-type: none"> <li>If core, whether cut or sawn and whether quarter, half or all core taken.</li> <li>If non-core, whether riffled, tube sampled, rotary split, etc. and whether sampled wet or dry.</li> <li>For all sample types, the nature, quality and appropriateness of the sample preparation technique.</li> <li>Quality control procedures adopted for all sub-sampling stages to maximise representivity of samples.</li> <li>Measures taken to ensure that the sampling is representative of the in situ material collected, including for instance results for field duplicate/second-half sampling.</li> <li>Whether sample sizes are appropriate to the grain size of the material being sampled.</li> </ul>	<ul style="list-style-type: none"> <li>Samples were split from dry, 1m bulk sample via a cone splitter directly from the cyclone.</li> <li>The QC procedure adopted through the process includes: <ul style="list-style-type: none"> <li>Field duplicates were collected at a rate of 1:50, these were collected during RC drilling at the same time as the primary sample.</li> <li>OREAS certified material (CRM) was inserted at a rate of 1:50, the grade ranges of the CRM's were selected based on grade populations.</li> <li>2-3kgs of sample was submitted to the laboratory.</li> <li>Samples oven dried then pulverized in LM5 mills to 85% passing 75micron.</li> <li>All samples were analysed for Au using the Au-AA26 technique which is a 50g lead collection fire assay.</li> </ul> </li> </ul>
<b>Quality of assay data and Laboratory tests</b>	<ul style="list-style-type: none"> <li>The nature, quality and appropriateness of the assaying and laboratory procedures used and whether the technique is considered partial or total.</li> <li>For geophysical tools, spectrometers, handheld XRF instruments, etc., the parameters used in determining the analysis including instrument make and model, reading times, calibrations factors applied and their derivation, etc.</li> <li>Nature of quality control procedures adopted (e.g. standards, blanks, duplicates, external laboratory checks) and whether acceptable levels of accuracy (i.e. lack of bias) and precision have been established.</li> </ul>	<ul style="list-style-type: none"> <li>Drill samples were submitted to ALS (Perth). All samples were analysed by a 50g fire assay (AAS finish) which is a total digest assay technique. Due to industry-wide pressure on fire-assay capacity, some prepped samples were transported to ALS Kalgoorlie for fire assay.</li> <li>Field duplicates were collected at a rate of 1:50 with CRM's inserted at a rate of 1:50 also. The grade ranges of the CRM's were selected based on grade populations.</li> </ul>
<b>Verification of sampling and assaying</b>	<ul style="list-style-type: none"> <li>The verification of significant intersections by either independent or alternative company personnel.</li> <li>The use of twinned holes.</li> <li>Documentation of primary data, data entry procedures, data verification, data storage (physical and electronic) protocols.</li> <li>Discuss any adjustment to assay data.</li> </ul>	<ul style="list-style-type: none"> <li>Drilling results are cross checked by company geologists</li> <li>Data is recorded digitally at the project within MicroMine Geobank software, assay results are received digitally.</li> <li>All data is stored within DataShed SQL Database.</li> </ul>
<b>Location of data points</b>	<ul style="list-style-type: none"> <li>Accuracy and quality of surveys used to locate drill holes (collar and down-hole surveys), trenches, mine workings and other locations used in Mineral Resource estimation.</li> <li>Specification of the grid system used.</li> <li>Quality and adequacy of topographic control.</li> </ul>	<ul style="list-style-type: none"> <li>Initial drill hole location is initially recorded with a handheld Garmin GPS (+/- 3m). A Reflex EZ North Seeking Gyro is used to record the deviation of the drill holes (+/- 1deg)</li> </ul>

<b>Criteria</b>	<b>JORC Code explanation</b>	<b>Commentary</b>
<b>Data spacing and distribution</b>	<ul style="list-style-type: none"> <li>• <i>Data spacing for reporting of Exploration Results.</i></li> <li>• <i>Whether the data spacing and distribution is sufficient to establish the degree of geological and grade continuity appropriate for the Mineral Resource and Ore Reserve estimation procedure(s) and classifications applied.</i></li> <li>• <i>Whether sample compositing has been applied.</i></li> </ul>	<ul style="list-style-type: none"> <li>• Refer to tables within text for data spacing.</li> <li>• Holes drilled within this program are not considered to be of suitable data spacing for use in Mineral Resource or Ore Reserve estimation</li> </ul>
<b>Orientation of data in relation to geological structure</b>	<ul style="list-style-type: none"> <li>• <i>Whether the orientation of sampling achieves unbiased sampling of possible structures and the extent to which this is known, considering the deposit type.</i></li> <li>• <i>If the relationship between the drilling orientation and the orientation of key mineralised structures is considered to have introduced a sampling bias, this should be assessed and reported if material.</i></li> </ul>	<ul style="list-style-type: none"> <li>• The drilling was orientated perpendicular to the perceived strike of the mineralised structures, with holes testing west-dipping structures in the mafic and layered intrusive units drilled to the east, and those testing near the interpreted east-dipping granodiorite contact drilled to the west. Inclined RC holes (-60°) are considered to be appropriate to the dip of the mineralised structure creating minimal sampling bias.</li> </ul>
<b>Sample security</b>	<ul style="list-style-type: none"> <li>• <i>The measures taken to ensure sample security.</i></li> </ul>	<ul style="list-style-type: none"> <li>• Calico samples are sealed into green/poly weave bags and cable tied. These are then sealed in bulka bags and transported to the laboratory in Perth by company staff or contractors or established freight companies.</li> </ul>
<b>Audits or reviews</b>	<ul style="list-style-type: none"> <li>• <i>The results of any audits or reviews of sampling techniques and data.</i></li> </ul>	<ul style="list-style-type: none"> <li>• Drilling results are cross checked by company geologists</li> </ul>

## Section 2 Reporting of Exploration Results

(Criteria listed in the preceding section also apply to this section.)

Criteria	JORC Code explanation	Commentary
<b>Mineral tenement and land tenure status</b>	<ul style="list-style-type: none"> <li>• <i>Type, reference name/number, location and ownership including agreements or material issues with third parties such as joint ventures, partnerships, overriding royalties, native title interests, historical sites, wilderness or national park and environmental settings.</i></li> <li>• <i>The security of the tenure held at the time of reporting along with any known impediments to obtaining a licence to operate in the area.</i></li> </ul>	<ul style="list-style-type: none"> <li>• M57/217, M57/98 and E57/888. These tenements are held under Gateway Mining Ltd 100%.</li> <li>• No Native Title claims are lodged over the tenements</li> </ul>
<b>Exploration done by other parties</b>	<ul style="list-style-type: none"> <li>• <i>Acknowledgment and appraisal of exploration by other parties.</i></li> </ul>	<ul style="list-style-type: none"> <li>• Gold was discovered in the district during the gold rush era, first records of gold won from small-scale, high-grade workings include the Montague Mining Centre (1904-13). Renewed interest in the late 1960's included base metal exploration carried out within exposed stratigraphy of the Montague Ranges (Bungarra Ranges), exploration interest that broadened with the release of the Sandstone 1:250,000 aeromagnetic sheet in 1970 resulting in the staking of favourable magnetic anomalies by exploration companies.</li> <li>• Early explorers in the Montague Ranges included Anaconda Australia Inc. (1966-67), followed by International Nickel Australia (1971-75) evaluating a Gabbro - banded differentiated basic complex believed prospective for copper and/or nickel such as the Dulith Gabbro, USA. Strong geophysical and mineralised anomalism was encountered, however, copper-zinc enrichment was also encountered in adjacent felsic stratigraphy at Ed's Bore prospect, which was followed-up by CRA Exploration (1983-1990) to intersect polymetallic VMS enrichments at Bevan prospect (not substantively pursued).</li> <li>• At Montague, Western Mining Corporation (1976) conducted investigations for copper and gold including soil sampling and IP surveying, which was followed by CRA Exploration (1984-89) working concurrently with AMOCO Minerals Australia Company (1984) and Clackline Refractories Ltd (from 1985 - to later become Herald Resources) assessing/purchasing historic mine areas from Mr W.J. Griffiths of Sandstone. RAB drilling penetrating transported cover resulted in the virgin discoveries of NE Pit by AMOCO and Whistler deposit by CRA. Later noted explorers included Dalrymple Resources NL (1987-1990) intersecting gold at the Armada (Twister) prospect, and Arimco Mining (1990-98) intersecting gold at Lyle prospect, Victory West prospect, and copper at The Cup prospect (not substantively pursued).</li> <li>• The Montague Mining Centre produced approximately 150,000oz of gold commencing in 1986 at Caledonian and NE Pits (Clackline), and continued at Montague Boulder from 1988 (Herald), and was to close in 1993 after completion of the Rosie Castle open cut (Herald). Whistler open cut was mined from November 1990 (Polaris Pacific NL) and ore toll treated through the Herald mill. Little attention was paid to mineralisation other than gold. Gateway Mining in joint venture with Herald Resources continued exploration of the Montague Mining Centre, Gateway also targeting poly-metallic intrusion</li> </ul>

Criteria	JORC Code explanation	Commentary
		<p>related - VMS models in the district from 2006.</p> <ul style="list-style-type: none"> <li>Airport, Airport Sth, S Bend, Rosie Nth, Rosie Sth mineralisation was discovered by Gateway Mining between 2007 and 2011 in RAB drilling and later defined by RC drilling.</li> </ul>
<b>Geology</b>	<ul style="list-style-type: none"> <li><i>Deposit type, geological setting and style of mineralisation.</i></li> </ul>	<ul style="list-style-type: none"> <li>Gateways's Gidgee Project is located in the Gidgee district in the Archean Yilgarn Craton of Western Australia approximately 630km NE of Perth and 70km north from the township of Sandstone on the eastern central portion of the Gum Creek Greenstone Belt, of the Southern Cross Province. Metamorphic grade of the Gum Creek Greenstone Belt is estimated to be low-grade greenschist facies.</li> <li>Project lithology includes basalt/ash tuff/dolerite/gabbro, the Montague Granodiorite sub-volcanic intrusion (calc-alkaline - FI), dacite volcanic flow/s (FI), volcanoclastic sequences of felsic composition and epiclastic conglomerates, ultramafic intrusives and external orogenic granite plutons. Key regional characteristics of a Volcanic Arc Extensional Basin include calc-alkaline bimodal volcanic sequences associated with extensive iron formations. Later ENE-WSW orogenic compression event is characterised by NNW regional scale faults/unconformities, NNW shearing and folding, slaty cleavage has developed within sediments near a tight syncline fold closure within the NE area of the project.</li> </ul>
<b>Drill hole Information</b>	<ul style="list-style-type: none"> <li><i>A summary of all information material to the understanding of the exploration results including a tabulation of the following information for all Material drill holes:</i> <ul style="list-style-type: none"> <li><i>easting and northing of the drill hole collar</i></li> <li><i>elevation or RL (Reduced Level – elevation above sea level in metres) of the drill hole collar</i></li> <li><i>dip and azimuth of the hole</i></li> <li><i>down hole length and interception depth</i></li> <li><i>hole length.</i></li> </ul> </li> <li><i>If the exclusion of this information is justified on the basis that the information is not Material and this exclusion does not detract from the understanding of the report, the Competent Person should clearly explain why this is the case.</i></li> </ul>	<ul style="list-style-type: none"> <li>Exploration drill results from recent drilling, and associated details are contained in Table 1 of this release. Historic intersections mentioned in this release have been previously released by Gateway in various ASX releases, which can be accessed on the Gateway Mining Ltd website</li> </ul>
<b>Data aggregation methods</b>	<ul style="list-style-type: none"> <li><i>In reporting Exploration Results, weighting averaging techniques, maximum and/or minimum grade truncations (eg cutting of high grades) and cut-off grades are usually Material and should be stated.</i></li> <li><i>Where aggregate intercepts incorporate short lengths of high grade results and longer lengths of low grade results, the procedure used for such aggregation should be stated and some typical examples of such aggregations should be</i></li> </ul>	<ul style="list-style-type: none"> <li>Significant intersections are calculated as a minimum of 1m greater than 1.0g/t Au with a maximum of 4m of internal dilution</li> <li>No high-grade cut-off has been applied</li> </ul>

Criteria	JORC Code explanation	Commentary
	<p><i>shown in detail.</i></p> <ul style="list-style-type: none"> <li><i>The assumptions used for any reporting of metal equivalent values should be clearly stated.</i></li> </ul>	
<b>Relationship between mineralisation widths and intercept lengths</b>	<ul style="list-style-type: none"> <li><i>These relationships are particularly important in the reporting of Exploration Results.</i></li> <li><i>If the geometry of the mineralisation with respect to the drill hole angle is known, its nature should be reported.</i></li> <li><i>If it is not known and only the down hole lengths are reported, there should be a clear statement to this effect (eg 'down hole length, true width not known').</i></li> </ul>	<ul style="list-style-type: none"> <li>The drilling was orientated perpendicular to the perceived strike of the mineralised structures targeted. Inclined RC holes (-60°) are perpendicular to the dip of the mineralised structure creating minimal sampling bias. However, recent evidence from drilling indicates a steep easterly dipping component to mineralisation which has not been adequately tested by recent easterly orientated RC drilling.</li> </ul>
<b>Diagrams</b>	<ul style="list-style-type: none"> <li><i>Appropriate maps and sections (with scales) and tabulations of intercepts should be included for any significant discovery being reported These should include, but not be limited to a plan view of drill hole collar locations and appropriate sectional views.</i></li> </ul>	<ul style="list-style-type: none"> <li>Appropriate maps are included in the announcement</li> </ul>
<b>Balanced reporting</b>	<ul style="list-style-type: none"> <li><i>Where comprehensive reporting of all Exploration Results is not practicable, representative reporting of both low and high grades and/or widths should be practiced to avoid misleading reporting of Exploration Results.</i></li> </ul>	<ul style="list-style-type: none"> <li>The accompanying document is considered to be a balanced report with a suitable cautionary note.</li> </ul>
<b>Other substantive exploration data</b>	<ul style="list-style-type: none"> <li><i>Other exploration data, if meaningful and material, should be reported including (but not limited to): geological observations; geophysical survey results; geochemical survey results; bulk samples – size and method of treatment; metallurgical test results; bulk density, groundwater, geotechnical and rock characteristics; potential deleterious or contaminating substances.</i></li> </ul>	<ul style="list-style-type: none"> <li>The area has been covered by detailed ground gravity and airborne magnetic surveys. The Montague Dome system was recently covered by a systematic fine-fraction soil sampling program which highlighted a series of anomalies corresponding to the mineralisation intercepted by this drilling.</li> </ul>
<b>Further work</b>	<ul style="list-style-type: none"> <li><i>The nature and scale of planned further work (eg tests for lateral extensions or depth extensions or large-scale step-out drilling).</i></li> <li><i>Diagrams clearly highlighting the areas of possible extensions, including the main geological interpretations and future drilling areas, provided this information is not commercially sensitive.</i></li> </ul>	<ul style="list-style-type: none"> <li>Further step-out RC and diamond drilling targeting the lower structure down dip and along strike of high-grade gold intercepts. Potential systematic infill of these results may be warranted to begin evaluation of the Mineral Resource potential</li> </ul>