



Highfield Resources





McLarty Potash Project

A World Class Potash
Exploration Project

May 2012

Highfield's McLarty Potash Project shows world class potential displaying all necessary attributes required to translate discovered potash mineralisation into a low cost, high profit operating mine.

Competent Person's Statement

The information contained in this presentation that relates to Exploration Results, Mineral Resources or Ore Resources is based on information reviewed and compiled by Mr Mark Arundell who is a member of the Australian Institute of Geoscientists. Mr Arundell is an Executive Director of Highfield Resources.

Mr Arundell has sufficient experience which is relevant to the type of deposit under consideration and to the activity which he is undertaking to qualify as a Competent Person as defined in the Australian Code for Reporting of Exploration Results, Mineral Resources and Ore Resources. Mr Arundell consents to the inclusion in this presentation of the matters based on his information in the form and context which it appears.

Forward Looking Statements

This presentation includes certain 'forward looking statements'. All statements, other than statements of historical fact, are forward looking statements that involve various risks and uncertainties. There can be no assurances that such statements will prove accurate, and actual results and future events could differ materially from those anticipated in such statements.

Such information contained herein represents management's best judgment as of the date hereof based on information currently available. The company does not assume any obligation to update any forward looking statement.

Executive Summary

- Highfield Resources is a potash exploration and discovery company with an exceptional asset in the Kimberley region of Northern Western Australia.
- A potash discovery is likely to deliver competitive operating costs relative to other major market participants.
- Two robust targets have been identified with drilling proposed for the latter half of this Calendar Year.
- The management team has significant mining, project management and commercial experience including specific potash experience across six continents.

Table of Contents

- 1 Company Overview**
- 2 McLarty Potash Project**
- 3 Potash**
- 4 Management Team**
- 5 Equity Structure**
- 6 Summary**

1. Company Overview

1. Potash exploration and discovery company.
2. Raised \$4m and listed on the ASX in early 2012 (current market cap circa \$10m).
3. Key project is the Company's McLarty Potash Project located in the Kimberley region of Western Australia.
4. The Company has a farm in agreement to secure up to 80% of the McLarty Potash Project.
5. Experienced management team with significant global potash experience.
6. Will consider investing into additional potash projects of a similar quality to the McLarty Potash Project.

2. McLarty Potash Project

Great Project Location

- Project is located in the Canning Basin of Northern Western Australia.
- The Canning Basin contains a thick salt sequence (Mallowa Salt) largely untested for Potash.
- Potential ports – Broome and Derby.
- Unparalleled access to Asian markets.
- OECD Country.
- Skilled workforce.



2. McLarty Potash Project

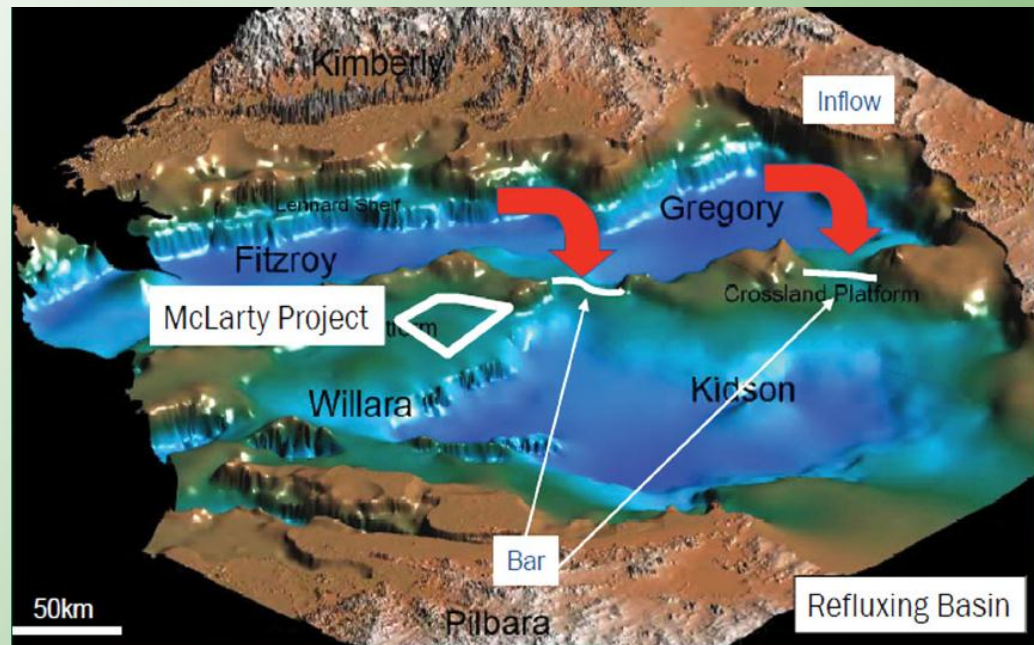
Largely Untested Evaporite Basin

Salt layer is similar
to other potash bearing
evaporite sequences in:

- Saskatchewan, CA
- Sergipe, Brazil
- Michigan, USA.

Prospective because:

- Extensive salt formation
- Similar age
- Potash present
- Limited exploration
- Analogous to Michigan.



2. McLarty Potash Project

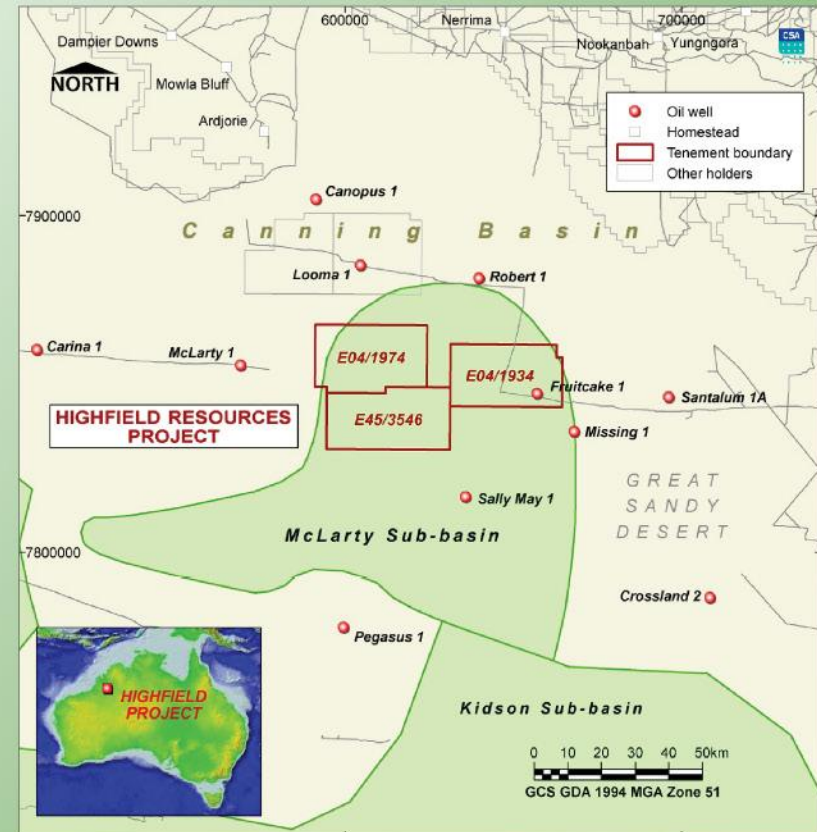
Positive Signs from Previous Exploration

Tenement package is ~70km x 35km and covers 1,900 km².

Fruitcake 1 intersected low levels of potash (25m at 1.83% K₂O).

McLarty 1 intersected values of over 200ppm Br indicating potash precipitation occurred.

Both Fruitcake 1 and McLarty 1 intersected undeformed thick (>500m) salt layer.



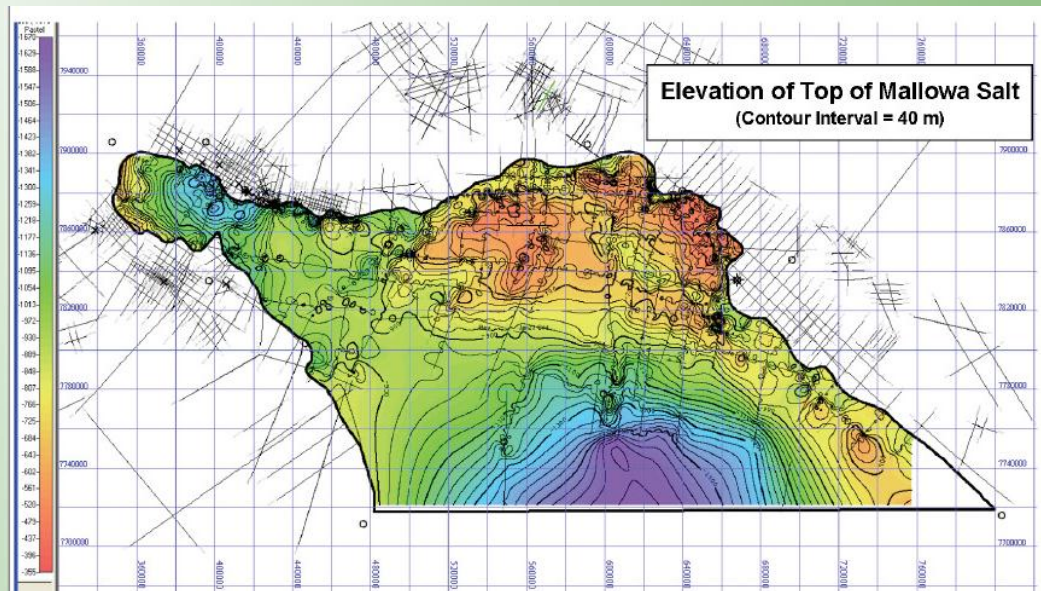
McLarty Potash Project

2. McLarty Potash Project

Top of salt – Shallow

Both Fruitcake 1 and McLarty 1 intersected the salt layer at <700m depth.

Shallow depth favourable for conventional potash mining or solution mining.

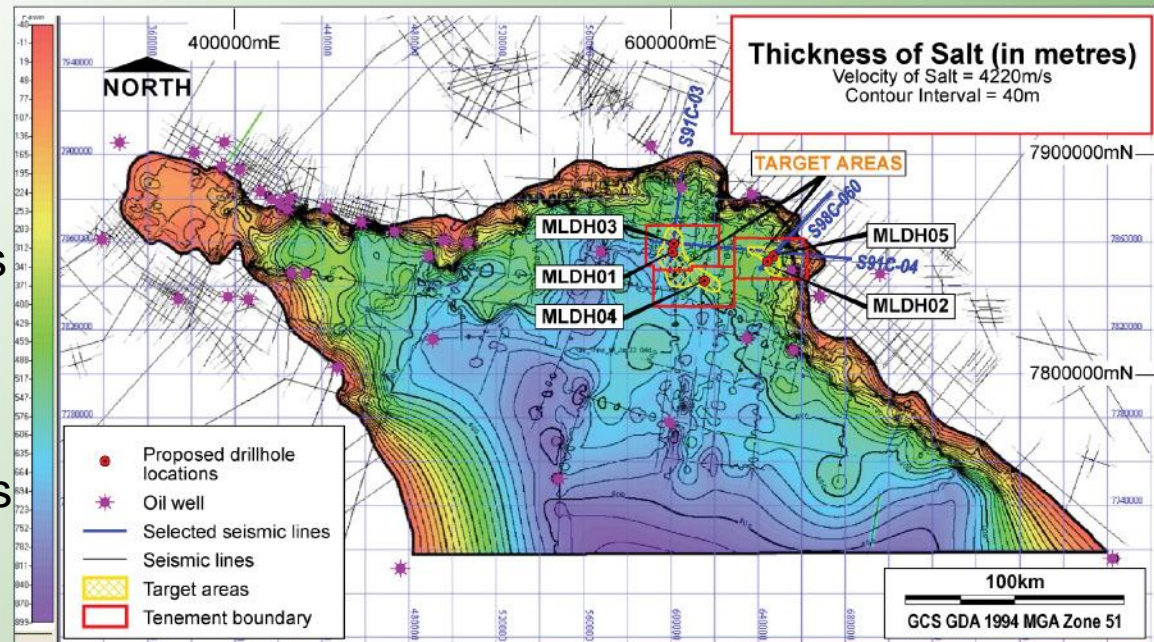


2. McLarty Potash Project

Thick Salt Layer

Interpretation of the salt layer from seismic data indicates salt thickness of between 500-700m.

Major Potash deposits occur within thick salt sequences.

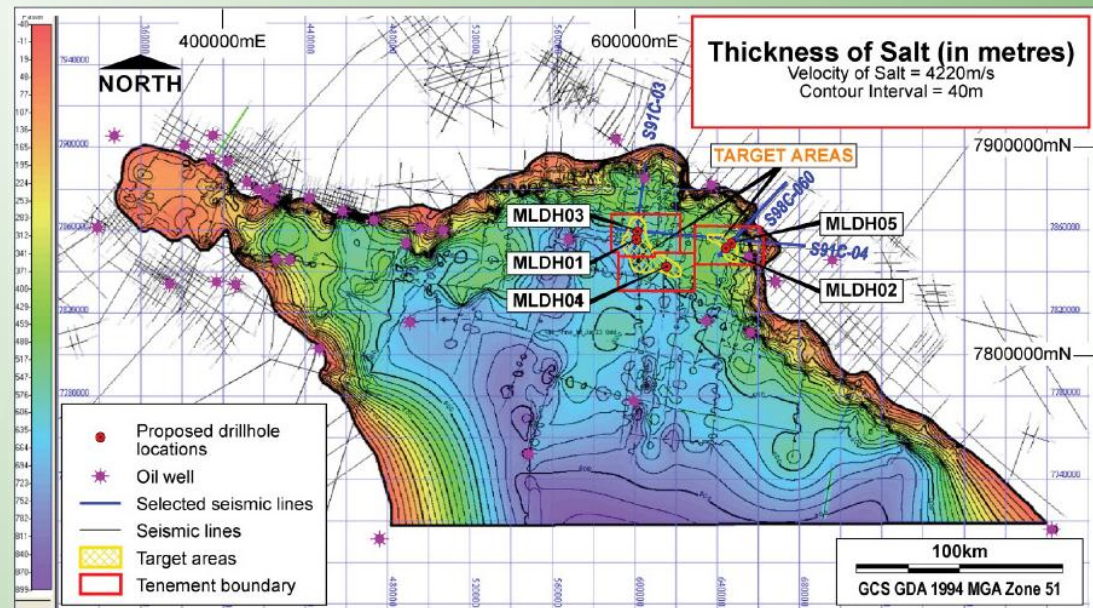


2. McLarty Potash Project

Salt Layer – Sub-Horizontal

Interpretation of seismic data indicates minimal salt disturbance in the McLarty Sub Basin.

This indicates that potash units are likely to be horizontal to gently dipping – optimal for potash extraction.



2. McLarty Potash Project

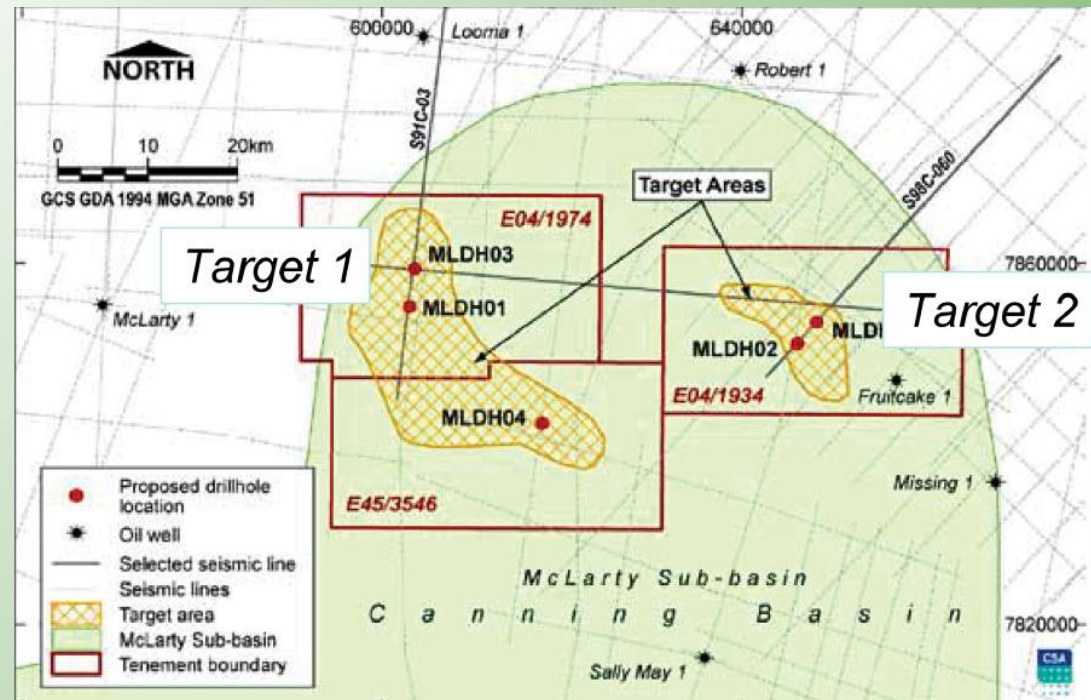
Targets identified
ready for drill
testing

Target 1:

Near sub-basin margin
Top of Salt: ~700m
Planned Depth: 1,400m.

Target 2:

Follow up of
Fruitcake 1 in more
favourable structural
setting – less faulted
Top of Salt: ~600m
Planned depth: 1,100m.



2. McLarty Potash Project

Completing access arrangements and finalising drilling contractors

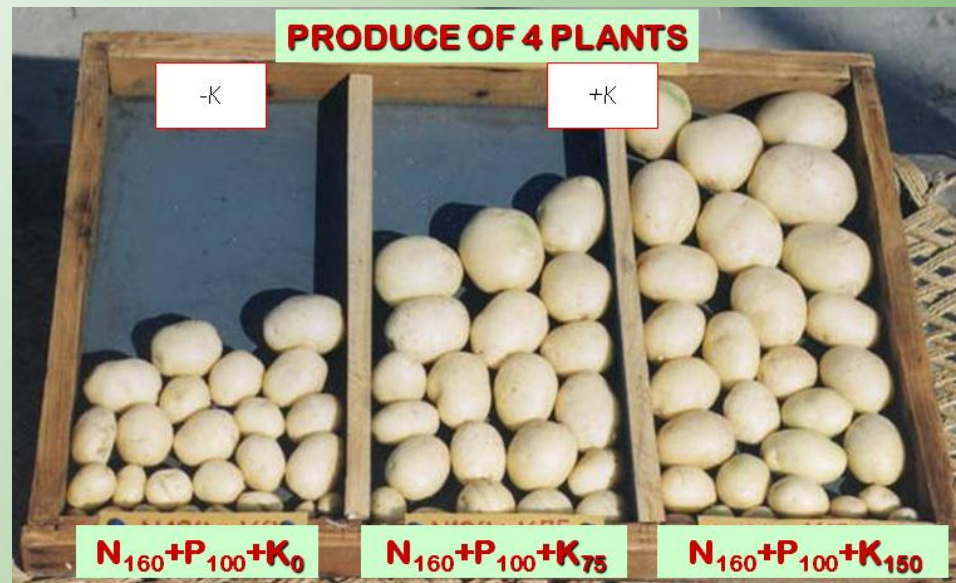
- Access route to the targets have been identified along existing tracks.
- Initial discussions with the Traditional Owners of the country have been positive.
- Experienced drilling contractor identified and briefed.
- Drilling anticipated to commence in Q3 2012.
- Initial results likely in Q4 2012.

3. Potash

What is Potash?

The term potash is used to describe various minerals and chemicals valued primarily for their potassium content. The main source of potash is potassium chloride.

Potash is a widely used nutrient fertiliser along with nitrogen and phosphorous. Fertiliser use accounts for approximately 95% of total potash consumption.



3. Potash

Its primary role in plants is to support and improve:

- Plant growth;
- Water retention;
- Nutrient value;
- Enzyme activation;
- Yield;
- Taste; and
- Disease resistance.



Potash also helps
the milk production
process in animals.

4. Management Team

Jonathan Murray

**Chairman
LLB (Hons)**

A lawyer with over 15 years commercial experience in equity capital markets, takeovers, project acquisition and divestments, corporate governance, commercial law and strategy.

He has extensive Global networks and is a director of multiple ASX listed entities.

Anthony Hall

**Managing Director
BBus, LLB (Hons),
ACIS**

A qualified lawyer and company secretary with over 15 years commercial experience in venture capital, risk management, strategy and business development.

Prior to his appointment he was Head of Strategy and Business Development for the solar energy division of an ASX listed top100 corporation.

Mark Arundell

**Exploration Director
BSc (Hons),
MEconGeol**

A geologist with over 25 years experience with companies such as Rio Tinto and North Ltd, including being principal geologist for Rio Tinto Exploration's Industrial Minerals Exploration (IMEx) division in Australia.

He has consulted on potash projects for a number of clients across six continents.

Scott Funston

**Company Secretary
BBus, CA, ACIS**

A chartered accountant with over 10 years experience in the mining industry and accounting profession.

His expertise is in financial management and general corporate advice and he is a Director and Company Secretary of multiple ASX listed entities.

Aaron Bertolatti

**Company Secretary
BCom, CA**

A chartered accountant with over 8 years experience in the mining industry and Accounting profession.

He has both local and International experience, having worked offshore for a period of his career and is the Company Secretary of multiple ASX listed entities.

5. Equity Structure

Management and Shareholders' interests strongly aligned

Ordinary Shares on Issue: 44m

Options with a strike price of 20c on issue: 6m

Fully Diluted Market Capitalisation: \$11m

(based on share price of \$0.20 17 May 2012).



Equity

- Vendors, Promoters and Seed Investors
- IPO Participants
- Options



Management % of Equity

- Management
- Non Related holdings

6. Summary

Potash Exploration And Discovery Company

Highfield is a pure play potash exploration and discovery company with an exceptional asset in Northern Western Australia.

Highfield will consider investing into other potash assets of a similar quality.

Prospective Exploration Project

The McLarty Potash project exhibits all characteristics necessary for success including: an evaporite basin with bar formation, close to surface salt layer, thick salt layer and potash (KCl) found in oil and gas wells on the package and close to the package.

Economic Potash Mineralisation

Any potash is likely to be close to surface and sub horizontal.

Climate is perfect for solar evaporation reducing energy costs.

Close to established ports and South East Asian markets.

Strong Management Team with Potash Experience

Deep experience in mining, project management, equity capital markets, venture capital, risk management and finance.

Team includes an experienced geologist who has consulted on potash across six continents.

Full Alignment of Interests

Tightly held share register.

Management and related entities control close to 20% of the fully diluted equity on issue.

Highfield's McLarty Potash Project shows world class potential displaying all necessary attributes required to translate discovered potash mineralisation into a low cost, high profit operating mine.



Highfield Resources

