



# Kingsrose Mining Limited



Way Linggo  
SUMATRA



*Exceptional grades, exceptional costs, exceptional growth*

Corporate Presentation May 2012



# Kingsrose – Strategic Focus

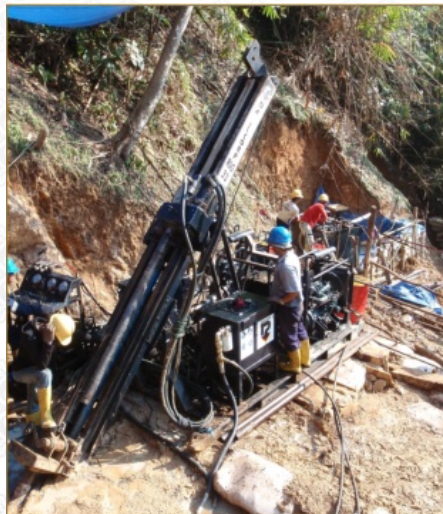
- Specialist Miner
  - *Focus on, non-mechanized, narrow vein mining*
- Geological Focus
  - *“Rim of Fire”*
  - *Bonanza Grade, Low Sulphidation Epithermals*
- Key Project
  - *Way Linggo (85%) in Sumatra, Indonesia*





## Kingsrose ... The Approach

- Developing Country – A need to be socially responsible
  - *Respect for local customs, cultures and beliefs*
  - *Local workforce – 4 expats only*
- Focus on regional economic output and employment multipliers
- Sustainable outputs from training, education and social programs
- A development strategy focused on self-funding growth
- A commitment to rewarding our shareholders





## Kingsrose ... Rewarding our Shareholders

- Capital Appreciation.
- Over 500% share price increase in 3 years
- Organic Growth – self funding a \$14m exploration budget this year from cash flow
- Dividends
  - *Announced intent to pay an interim dividend in 2012*





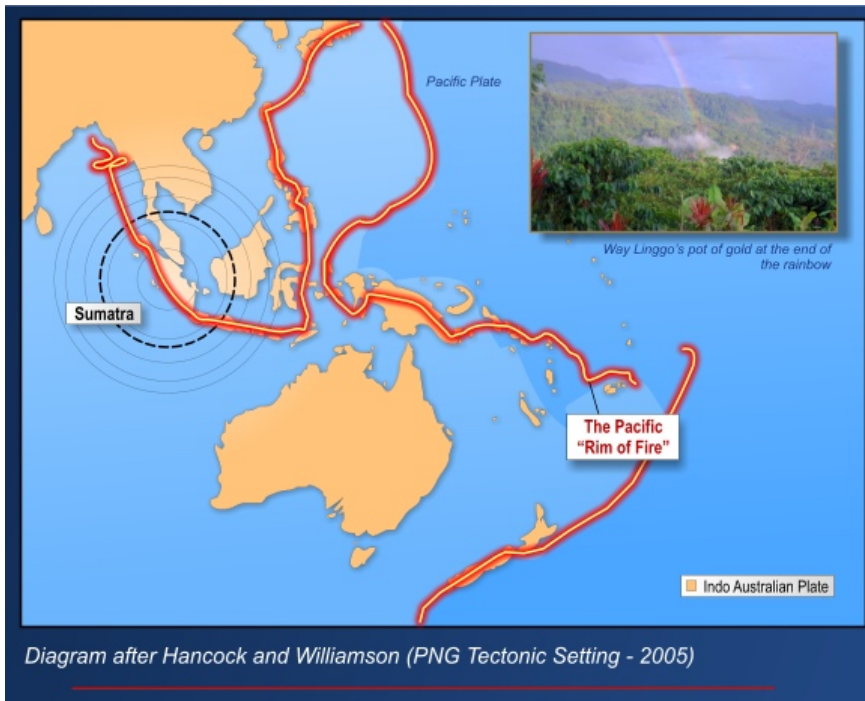
# *Kingsrose ... Geological Setting - Way Linggo Project*





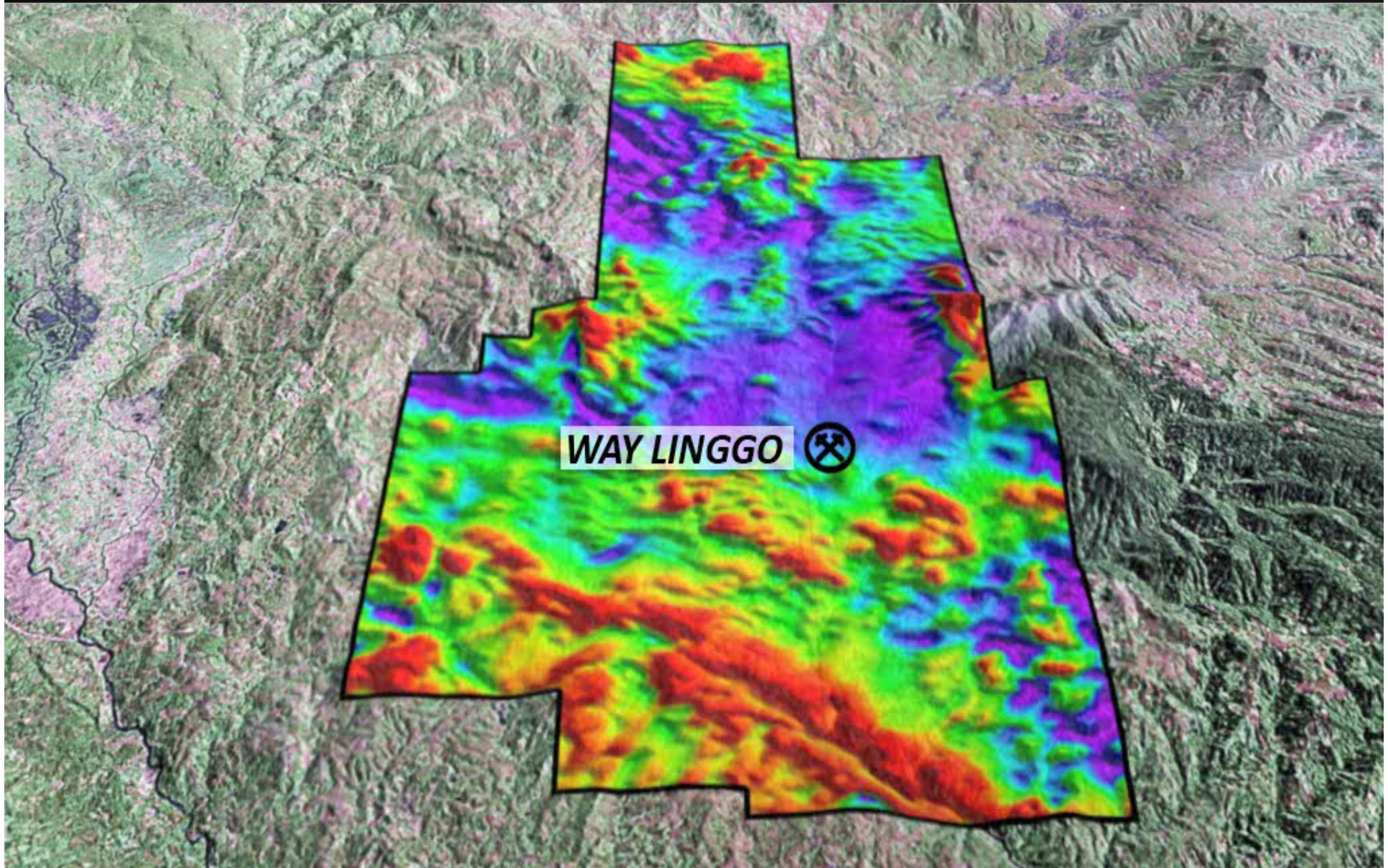
# Kingsrose ... Way Linggo on the "Rim of Fire"

- Located in the Rim of Fire and on the Trans Sumatra Fault Zone
- World's second-most significant source of gold deposits – Tertiary Age





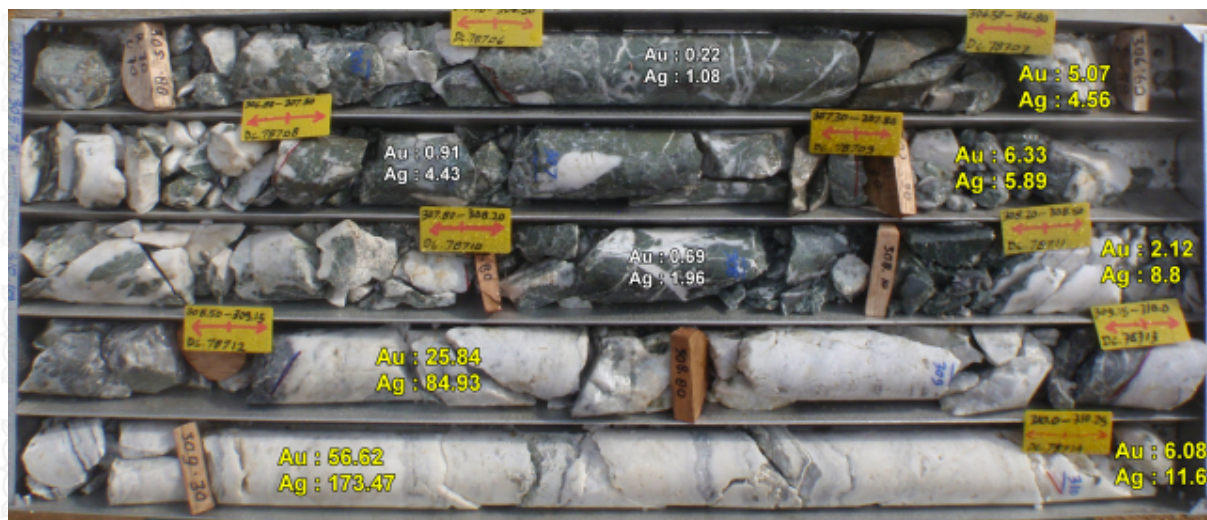
# Way Linggo Mine – operations





# Way Linggo – Total Mineral Resource Estimate (JORC)

Classification		Tonnes	Au g/t	Ag g/t	Au oz	Ag oz
Measured	Way Linggo	467,400	12.44	166.8	186,940	2,506,500
Indicated	Way Linggo	182,800	6.09	84.5	35,790	496,600
Inferred	Way Linggo	60,200	3.77	38.1	7,300	73,700
<b>Subtotal</b>	<b>Way Linggo</b>	<b>710,000</b>	<b>10.24</b>	<b>135.6</b>	<b>230,030</b>	<b>3,076,800</b>
Inferred	Talang Santo	879,400	5.89	14.6	166,400	413,000
<b>Grand Total</b>		<b>1,589,400</b>	<b>7.89</b>	<b>14.6</b>	<b>396,430</b>	<b>3,489,800</b>



DDH 226 -Talang Santo

**4.65m @ 16.31 g/t Au, 47 g/t Ag**  
(from 305.6 m)

**Including**

**1.75m @ 37.9 g/t Au, 117 g/t Ag**  
(from 308.5 m)



# Way Linggo – The scorecard

		2011 Act Calendar year
Mill Tonnes	t	106,410
Gold grade	g/t	12.9
Silver grade	g/t	166
Gold Produced	oz	40,497
Silver Produced	oz	479,362
<b>Cash Cost after silver credits</b>	<b>US\$/oz</b>	<b>139</b>
D&A	US\$/oz	213
Government Royalties	US\$/oz	40
<b>Total Cost</b>	<b>\$/oz</b>	<b>392</b>

## 2012 financial year forecast

- 37,000 ounces of gold

## Next financial year forecast

- 40,000-50,000 ounces of gold

## Medium term

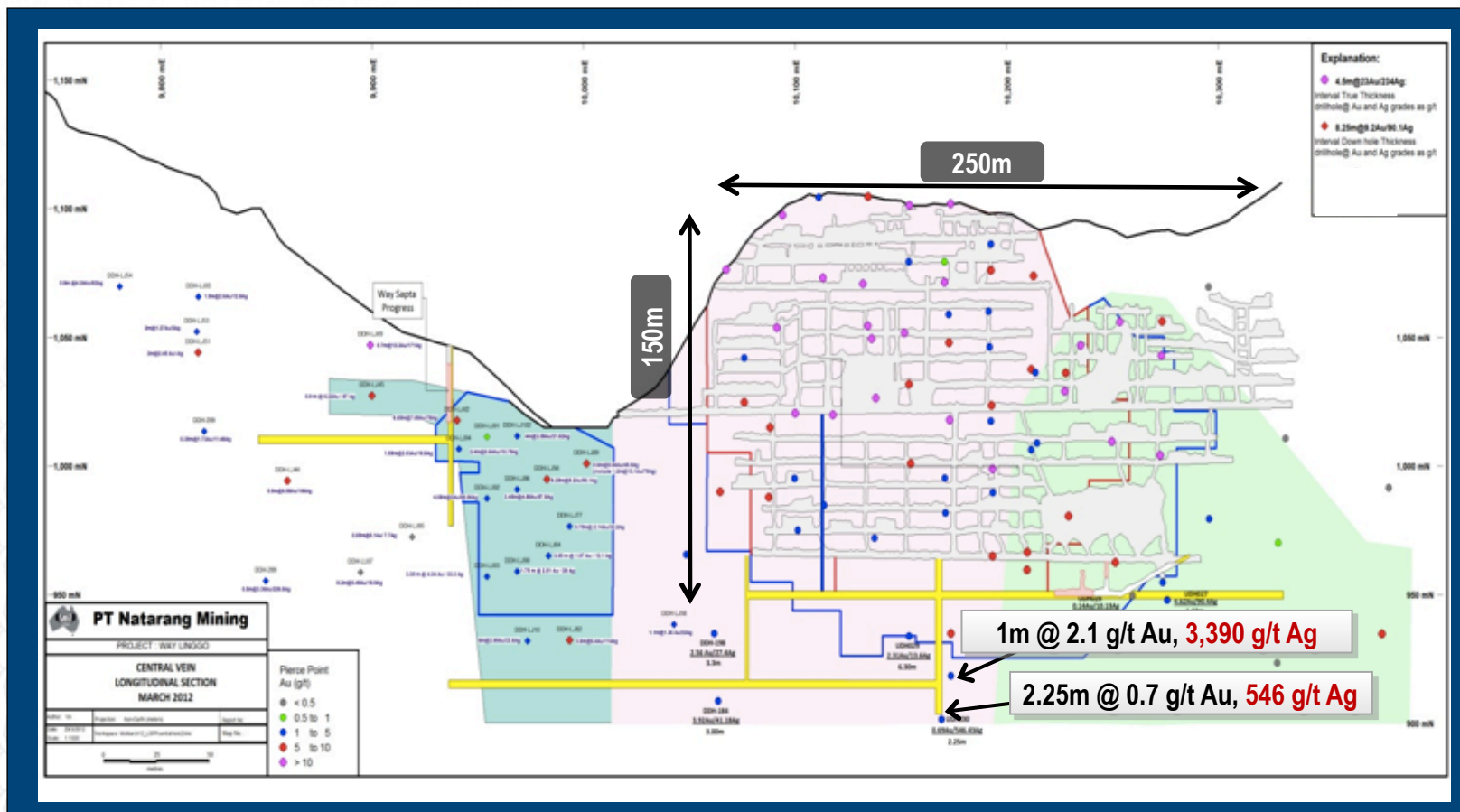
- targeting production of 55-65 koz of gold per year





# Way Linggo Mine

- Orebody drilled just 350m along strike and 200m vertically
- Epithermal veins continuous in all directions
- Possible extensions to extend ore system





## Talang Santo – Major Cluster of Epithermal Veining

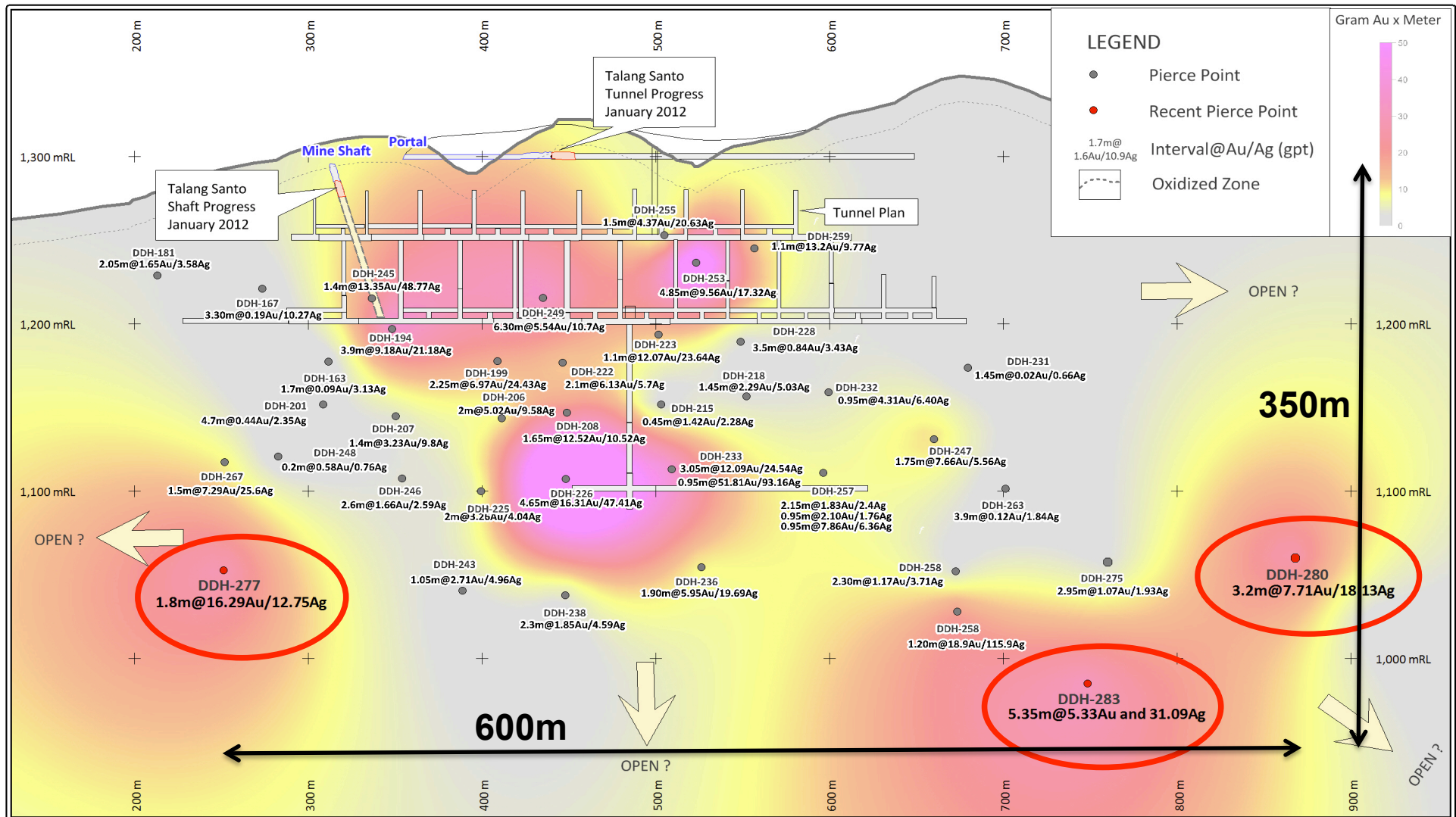
- The first priority target to be extensively drill tested
- Located just 7km north of Way Linggo with a haul road in place
- Resource Estimate (Inferred)
  - 879,000t @ 5.9 g/t Au & 14.6g/t Ag*
  - 166,400oz Gold & 413,000oz Silver*
- Drill-out continues and system expanding along strike and improving at depth





# Talang Santo – Ore system expanding

## Latest drill results - mineralisation is open to the west, east & at depth







## Talang Santo – The Second Mine

- Development starts - just 9 months after the first significant drill result
- Trial mining has commenced – ore production expected to supplement Way Linggo ore feed late in June quarter 2012 (12 months from discovery)
- Low Capital Cost as Infrastructure already in place





# Way Linggo Process Plant

- Free milling ore (non-refractory)
- 140,000tpa conventional plant
- Crushing > milling > leach > merrill-crowe > smelting > gold & silver dore
- Gold and silver refined at refinery in Java, Indonesia
- SAG mill installed mid-2011 to de-bottleneck materials handling issues
- Grinding capacity in place to expand processing to 200,000tpa





# Organic Growth – Exploration and Mine Development

Objective – to self-fund exploration & project development from cashflow

1. *Mining Way Linggo*
2. *Developing Talang Santo*
3. *Exploring for 3rd mining front*
  - *Exploration Strategy & Budget – US\$14m for 2011-12 year, 12 drill rigs*
  - *Priority on mine extensions, Linggo-Sapta, Semung Kecil and Rowo Rejo prospects*
  - *Build on geological dataset, prioritise targets and drill test*
  - *Drill out new discoveries and continue testing other targets at the same time*





## Immense exploration upside

- 100sqkm 4<sup>th</sup> Generation Contract of Work
- 17 defined epithermal zones/targets
  - *Epithermal veins exist and/or outcrop*
  - *Strong gold and associated metal anomalism exists*
  - *Intense epithermal clay alteration*
- Drilling a number of priority targets – with encouraging results



- 12 rigs in action
- 6 field teams
- \$14M budget over the next 12 months

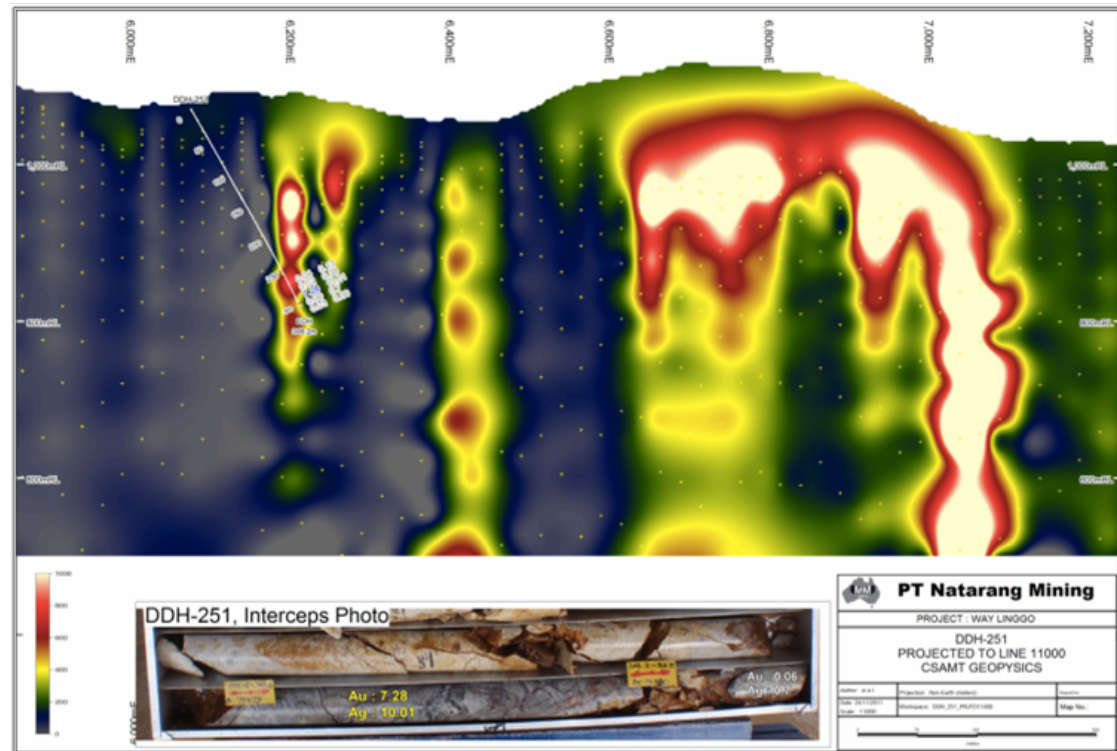
### Top 3 priorities

- Talang cluster
- Way Linggo mine extensions
- Linggo Sapta, Semung Kecil & Rowo Rejo



# Exceptional growth – Aggressive drilling program

- Drill testing of priority Targets:
  - *Extensions to the Way Linggo and Talang Santo mines*
  - *Way Sapta – a structural look-alike to Way Linggo – good outcropping veins.*
  - *Semung Kecil – high grade epithermal floats*
  - *Rowo Rejo – big sinter and breccia development with major CSAMT anomaly*





# Corporate Summary

## Board Members

John Morris	<i>Chairman</i>
Chris Start	<i>Managing Director</i>
Tim Spencer	<i>Finance Director</i>
Bill Phillips	<i>Director</i>
Peter Cook	<i>Director</i>



## Corporate Structure

Market	ASX
Share Code	KRM
Listed Option Code	KRMO
Share Price	\$1.18
52 week high/low	\$1.05 - \$1.88
Shares on Issue	279 Million
Options on Issue	19 Million
Shares fully diluted	298 Million
Market Capitalisation	\$329 Million
Cash and Bullion (30 Apr)	\$43 Million

*As at 30 April 2012*





# Kingsrose – Achieving and Performing

- Our Achievements – In the past 3 years:
  - *Acquired, permitted, designed, developed and delivered production from the Way Linggo mine*
  - *Emerged as one of the lowest cost gold miners in the world.*
  - *Developed the project with a socially responsible, technically appropriate and regionally acceptable method*
  - *Fulfilled a strategy to become locally managed*
  - *Achieved a position of self-funding exploration and project development*
  - *Made a second major discovery with more to come*





# Why Invest in Kingsrose?

## Exceptional Grade ✓

*Specialist high-grade narrow vein miners – We chase profit not ounces.*

## Exceptional Cost ✓

*Sub US\$300/oz after silver credits.*

## Exceptional Growth ✓

*Second mine at Talang Santo & exceptional prospectivity*

## Rewarding our Shareholders ✓

*Maiden Dividend to be paid in June Qtr 2012*





# Disclaimer

## General Disclaimer

- This presentation has been prepared by Kingsrose Mining Limited (“Kingsrose” or the “Company”). It should not be considered as an offer or invitation or inducement to subscribe for or the purchase of any securities in the Company. This presentation contains forecasts and forward looking statements. Such forecasts, projections and information are not a guarantee of future performance, involve unknown risks and uncertainties. Actual results and developments may differ materially from those expressed or implied. Kingsrose has not audited or investigated the accuracy or completeness of the information, statements and opinions contained in this presentation. Accordingly, to the maximum extent permitted by applicable laws, Kingsrose makes no representation and can give no assurance, guarantee or warranty, express or implied, as to, and takes no responsibility and assume no liability for, the authenticity, validity, accuracy, suitability or completeness of, or any errors in or omission, from any information, statement or opinion contained in this presentation. This overview of Kingsrose does not purport to be all inclusive or to contain all information which its recipients may require in order to make an informed assessment of the Company’s prospects. You should conduct your own investigation and perform your own analysis in order to satisfy yourself as to the accuracy and completeness of the information, statements and opinions contained in this presentation before making any investment decision. The SARINC target statement has been based on data provided by Regional of Sardinia, Italy. The estimate of the potential quantity and grade are considered conceptual in nature as there has been insufficient exploration to define a Mineral Resource and it is uncertain if further exploration will result in the determination of a Mineral Resource.

## Competent Person Statement

- The information in this report that relates to exploration results, mineral resources and ore reserves is based on information compiled by Mr. Peter G. Cook, BSc Applied Geol, MSc (Min Econ), who is a Member of the Australasian Institute of Mining and Metallurgy, and a Director of and consultant to Kingsrose Mining Limited. Mr. Cook has sufficient experience which is relevant to the styles of mineralisation and types of deposits and to the activity he is undertaking to qualify as a Competent Person as defined in the 2004 edition of the Australasian Code for Reporting of Exploration Results, Mineral Resources and Ore Reserves (“JORC Code”). Mr. Cook consents to the inclusion in this report of the matters based on his information in the form and context in which it appears.



## Board of Directors – Highly Experienced & Successful

**John Morris**  
Chairman

Mr. Morris has over 36 years experience in exploration, project development and management of public listed resource companies. He has held prior directorships in a number of gold and base metals public companies in Australia and overseas including Forsayth NL, Uruguay Mineral Exploration Plc and Amerisur Resources Plc (formerly Chaco Resources Plc/Gold Mines of Sardinia Plc)

**Chris Start**  
Managing  
Director

Mr. Start graduated from RMIT as a Metallurgical Engineer with honors in 1988 and has over 23 years of experience in the mining industry. He has worked as a metallurgist, in management positions and as a consultant at a number of mine sites including Kidston, Murrin Murrin, Granny Smith and Boddington. Mr. Start also has international experience working as the Processing Manager at Mt Muro gold and silver mine in Indonesia and as the General Manager at the Musselwhite gold mine in Canada. In addition to his extensive operations experience, Mr Start also has a Master of Science Degree in Mineral Economics.

**Tim Spencer**  
Finance  
Director

Mr Spencer is an economist and qualified accountant with over 16 years experience in various accounting, treasury and finance roles, which included periods with gold companies and a gold refining and trading enterprise. He has particular expertise in precious metals markets and in hedging strategies.

**Peter Cook**  
Director

Peter Cook is a Geologist and Mineral Economist and is the current Non-Executive Chairman of Metals X Limited, Aragon Resources Limited and Pacific Niugini Limited. He is also a director of Westgold Resources Limited. He has previously been Managing Director of Hill 50 Gold Ltd, Harmony Gold Australia Pty Ltd, Abelle Ltd and Metals X Limited. Mr. Cook has 28 years in various aspects of the resource sector and brings significant expertise in exploration, mine and corporate management.

**Bill Phillips**  
Director

Mr. Phillips has over 30 years experience in mining contracting and mine management, much of which has been gained in Western Australia. He is highly regarded as a leading specialist in underground narrow vein mining. He has managed or been instrumental in the successful development of 16 mines either in the role of contractor or as owner/shareholder. Mr. Phillips most recent role was overseeing development, mining and production at Medusa Mining Limited's Co-O gold mine in the southern Philippines. He is now focused solely on the Way Linggo gold/silver mine located in Sumatra.