



NEWS RELEASE

7 July 2009

ASX Code – LIN

EXPLORATION UPDATE DINGUIRAYE Pt-Ni-Cu PROJECT – GUINEA

Exploration is progressing well at Lindian's Dinguiraye Pt-Ni-Cu Project. Highlights are:

- **Phase II infill and extension soil sampling programme completed.**
- **Fugro mobilising to commence airborne magnetic survey.**
- **Structural interpretation highlights structural setting similar to globally recognised Platinum / Nickel sulphide deposits.**
- **Application submitted for a 300km² licence contiguous to existing granted licence.**

Dinguiraye Pt-Ni-Cu Project

The Dinguiraye Pt-Ni-Cu Project is located at the town of Dinguiraye approximately 400km northeast of Conakry in the central part of Guinea. It is readily accessible by the N1 sealed road from Conakry with the final 50km to Dinguiraye on the N30 all weather unsealed road (Figure 1).



Figure 1 – Location Plan

The Project consists of a granted exploration licence (comprising 4 parts) covering 394km² and an application for a contiguous licence covering a further 300km² (Figure 2).

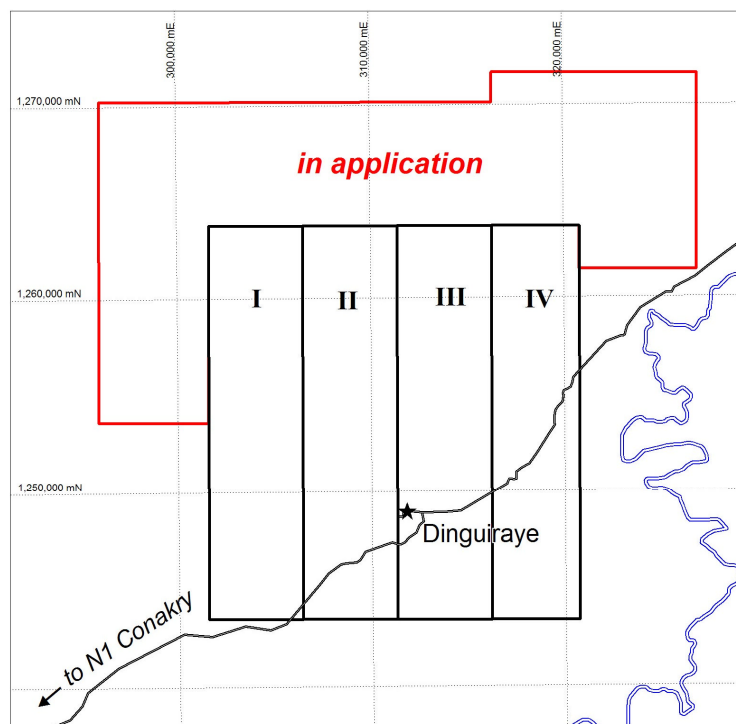


Figure 2 – Dinguiraye Licences

Exploration

Soil Geochemistry

An 848 sample Phase II infill and extension soil sampling programme has been completed. This programme was designed to infill on the highly anomalous results returned by the initial Phase I soil geochemical programme completed during 2008 (described in detail in a prior announcement). The Phase I programme was completed on a 1000m x 200m grid. Infill will reduce the sampling grid to 500m x 200m.

The original 1000m x 200m sampling grid has also been extended to the north to cover all of the mapped dolerite-gabbro lying within the granted licence.

The Phase II samples have been dispatched from Guinea to Genalysis Laboratories in Perth, Western Australia for analysis. Results are expected in August 2009.

Geophysics

Fugro Airborne Surveys (Pty) Ltd have been contracted to complete a fixed wing airborne magnetic survey over the Dinguiraye Project Area. They are presently mobilising to Guinea and are planning to commence the survey in mid July.

This magnetic survey will enable the mapping of the dolerite-gabbro intrusive, it's various intrusive units and any layering present. In conjunction with the geochemistry it will aid in the definition of mineralised horizons through the mapping of magnetic minerals (pyrothite or magnetite). These minerals are either directly or spatially associated with mineralisation in globally recognised platinum / nickel sulphide deposits.

Structural Interpretation

SRTM (shuttle radar topography mission) data covering Guinea and a local DTM (digital terrain model) derived from the SRTM data has been used in regional (Figure 3) and local structural interpretations. Regionally the SRTM was useful in highlighting the position of the Dinguiraye dolerite-gabbro within a crustal scale extensional zone at the contact between an Archean craton and the Siguiri Basin sediments and volcanics. This setting is similar to many of the globally recognised platinum / nickel sulphide deposits.

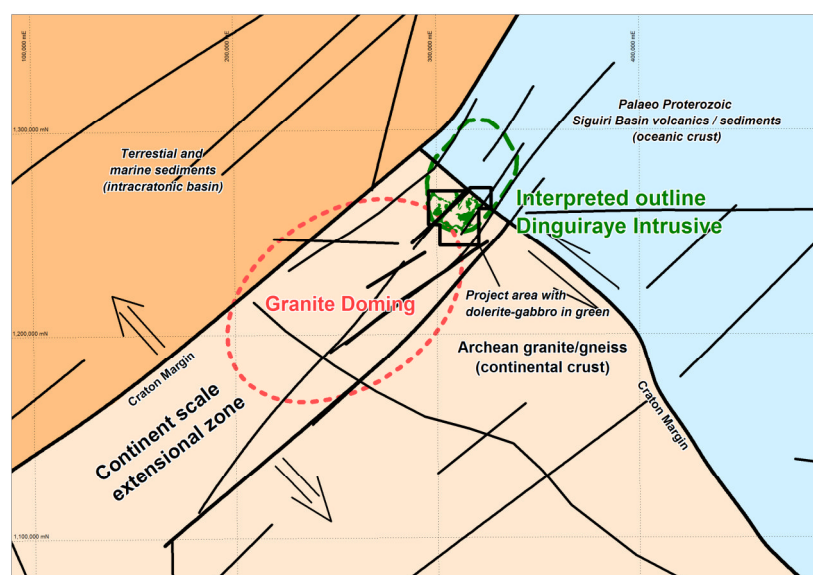


Figure 3 - Dinguiraye Pt-Ni-Cu Project – Regional Structural Setting

Locally the DTM has enabled the interpretation of 3 fault bounded plateaus defined by northeast and northwest trending normal faults (Figure 4). The Phase I soil geochemical anomalies have been projected on the DTM. The relationship of the geochem to the structure is as follows:

Block 1: coincident Pt and Ni anomalism forms an open ended 10,000m long by 1,000m wide anomaly along the southern scarp of the Block 1 plateau. The top of the plateau contains a Cr anomaly interpreted to represent an underlying ultramafic. The coincident Pt and Ni potentially lie along or near the interpreted basal contact of this ultramafic.

Block 2: anomalous Pt and Ni are coincident over 6,000m along the southern scarp face while the Ni anomalism continues for a further 5,000m along the scarp face to the west. Cr is coincident with the Pt and similar to Block 1, is offset to the north. A similar interpretation as Block 1 is applied to this anomalous area and it is possibly a fault offset of the same intrusive.

Block 3: a large 5,000m x 1,500m Pt anomaly is present with coincident anomalous Pd, Ni, Cu and Cr in part.

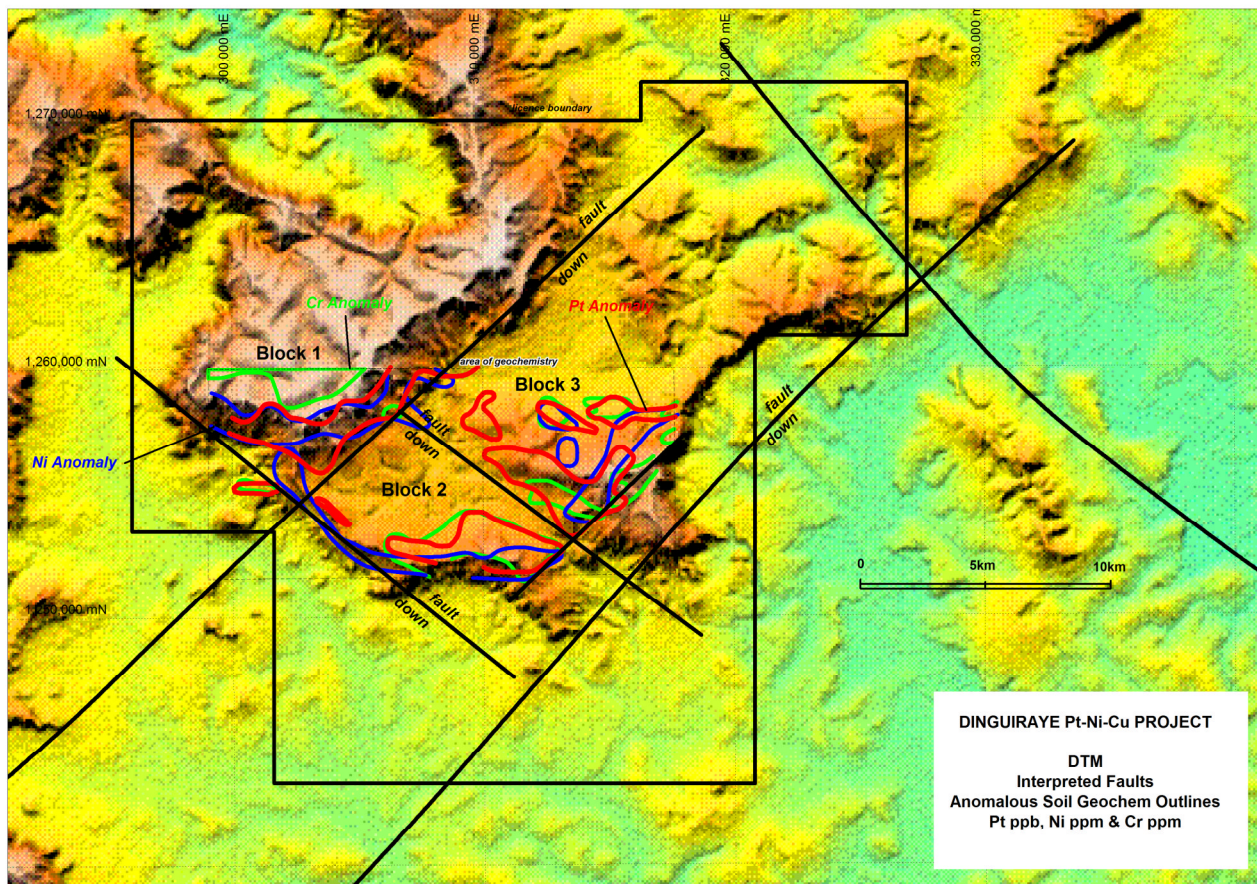


Figure 4 – Dinguiraye Pt-Ni-Cu Project – Soil Geochemical Anomalies over DTM

Exploration to date has demonstrated the potential of the dolerite–gabbro intrusive to host magmatic accumulations of Pt / Ni sulphides. The Company is planning to commence drilling in October 2009.

For further information in respect of the Company's activities, please contact:

| | | |
|--|--|--|
| Reg Gillard | Greg Smith | Tony Cunningham |
| Chairman | Director | Director |
| Tel: (61 8) 9345 2478 | Tel: (61 8) 9345 2478 | Tel: (61 8) 9223 2201 |
| Email: gillardr@crcpl.com.au | Email: smithg@crcpl.com.au | Email: tony@cunninghamsec.com.au |

Company website: www.lindianresources.com.au

Scientific or technical information in this news release has been prepared under the supervision of Mr Greg Smith, a director of the Company and a member of the Australasian Institute of Mining and Metallurgy (AusIMM). Mr Smith has sufficient experience which is relevant to the style of mineralisation under consideration and to the activity which he is undertaking to qualify as a Competent Person as defined in the 2004 Edition of the "Australasian Code for Reporting of Exploration Results, Mineral Resources and Ore Reserves" (the JORC Code). Mr Smith consents to the inclusion in this report of the Information, in the form and context in which it appears.