



ASX Release

31 January 2012

LINDIAN RESOURCES LIMITED

Level 1 / 33 Richardson Street
West Perth, Australia WA 6872
Tel: +61 8 9200 4438
Fax: +61 8 9200 4469

Contact:

Steve Leithead
Managing Director

E-mail: info@lindianresources.com

For the latest news:

www.lindianresources.com.au

Directors / Officers:

Matthew Wood
Steve Leithead
Scott Funston
Angus Caithness
Brian McMaster

ASX Symbol: LIN



Core logging activities – Masapelid

DECEMBER 2011 QUARTERLY ACTIVITY REPORT

HIGHLIGHTS

- Lindian achieves exploration success on its flagship Masapelid Projects with highly encouraging results from the Manuel Vein System and Sabang Prospects (Figure 1).
- The company makes a new discovery with the Layab Porphyry on the east coast of Masapelid (Figure 2).
- Twelve (12) diamond drill holes completed for 2,825.20 metres on the Manuel Vein System (MVS) and Sabang Prospects.
- Results received for most of the holes completed in the Masapelid 2011 drilling programme. Results for three (3) holes remaining.

MANUEL VEIN SYSTEM (MVS)

- High grade gold assays continue to be returned for the MVS (Figure 3) with significant results including:

2.00 metres from 125.00 metres at 118.35g/t gold, 105.20g/t silver, 0.86% lead and 1.16g/t zinc in hole BML-026,

including 1.00 metre from 126.00 metres at 235.70g/t gold, 156.10g/t silver with minor lead and zinc mineralisation.

2.00 metres from 42.00 metres at 39.31g/t gold and 27.05g/t silver in hole BML-019,

including 1.00 metre from 43.00 metres at 78.35g/t gold, 52.70g/t silver.

3.00 metres from 181.00 metres at 4.38g/t gold and 28.00g/t silver in hole BML-021,

including 1.00 metre from 182.00 metres at 12.17g/t gold, 76.80g/t silver.

SABANG PROSPECT

- Assays received for holes BMS-002 to BMS-006 inclusive with broad zones of low-grade copper-silver±gold being identified in most of the holes for which results have been returned. Significant results include:

250.30 metres at 0.31% copper and 2.12g/t silver from 14.00 metres in hole BMS-002,

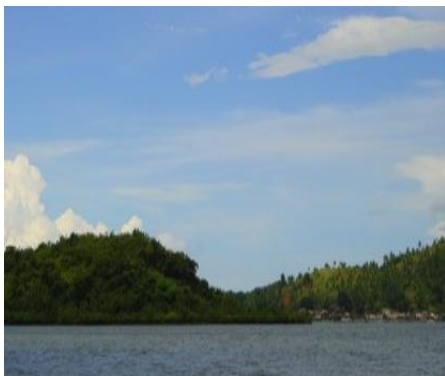
Including a secondary copper supergene intercept of 7.00 metres at 0.85% copper and 15.94g/t silver from 14.00 metres.

222.00 metres at 0.40% copper, 1.61g/t silver and 0.15g/t gold from 3.00 metres in hole BMS-004,

Including a secondary copper supergene intercept of 28.00 metres at 0.73% copper and 3.54g/t silver (and 0.13g/t gold) from 14.00 metres.



Sabang Prospect – intense silica-hematite stockwork zone adjacent to drill hole BMS-007b.



Layab Porphyry – Masapelid (Layab Porphyry - island in middle left foreground).

492.80 metres at 0.21% copper, 0.09g/t gold and 1.42g/t silver from 8.00 metres in hole BMS-006, including:

19.00 metres at 0.31% copper, 0.14g/t gold and 2.47g/t silver from 94.00 metres.

32.00 metres at 0.32% copper, 0.11g/t gold and 4.28g/t silver from 139.00 metres.

10.00 metres at 0.11% copper, 0.37g/t gold and 2.47g/t silver from 250.00 metres.

10.00 metres at 0.16% copper, 0.34g/t gold and 3.21g/t silver from 280.00 metres.

5.00 metres at 0.36% copper, 0.38g/t gold and 0.78g/t silver from 353.00 metres, and

15.00 metres at 0.38% copper, 0.24g/t gold and 1.39g/t silver from 365.00 metres.

Assay results are awaited for holes BMS-007(a) and BMS-007(b) on the Sabang Prospect.

LAYAB PORPHYRY

- **A discovery of extensive porphyry style copper±silver±gold mineralisation was made during the quarter on the easternmost extent of the MVS. Diamond drill holes BML-027 drilled to a depth of 182.90 metres recorded mineralisation over a significant portion of the total depth drilled. Significant results obtained include:**

174.00 metres from 2.00 metres at 0.22% copper, 0.50g/t silver including:

19.00 metres from 2.00 metres at 0.40% copper, 1.91g/t silver and 0.16g/t gold which also includes an interval of 4.00 metres from 11.00 metres at 0.31% copper, 6.70g/t silver and 0.65g/t gold.

70.00 metres from 43.00 metres at 0.24% copper, 0.36g/t silver and 0.06g/t gold which also contains an interval of 2.00 metres from 43.00 metres at 0.71% copper, 1.45g/t silver and 0.10g/t gold.

9.00 metres from 167.00 metres at 0.33% copper, 0.20g/t silver and 0.15g/t gold.

Assay results are awaited for a scissor hole (BML-028) drilled into this zone.

Manuel Vein System (MVS)

Drilling progressed on the MVS during the quarter with 100 metre spaced sections being completed along most of the interpreted length of the vein system. Results received indicate that high-grade gold-silver with variable copper-lead-zinc is contained in plunging quartz-base metal mineralised shoots hosted by altered andesite and andesitic breccias.

Infill drilling will be required to better define the extent and geometry of the mineralised shoot system.

The parallel Francisco and Layong Veins are yet to be tested and initial work on these vein systems is planned in the forthcoming quarter.



Manuel Vein System (MVS). Abandoned gold-silver workings on the westernmost drilled area along the MVS (adjacent to drill hole BML-024).



Exploration Camp – Masapelid.

Significant results received for drilling of the MVS include:

2.00 metres from 125.00 metres at 118.35g/t gold, 105.20g/t silver, 0.86% lead and 1.16g/t zinc in hole BML-026,

including 1.00 metre from 126.00 metres at 235.70g/t gold, 156.10g/t silver with minor lead and zinc mineralisation. (Figure 4)

2.00 metres from 42.00 metres at 39.31g/t gold and 27.05g/t silver in hole BML-019,

including 1.00 metre from 43.00 metres at 78.35g/t gold, 52.70g/t silver.

3.00 metres from 181.00 metres at 4.38g/t gold and 28.00g/t silver in hole BML-021,

including 1.00 metre from 182.00 metres at 12.17g/t gold, 76.80g/t silver.

Drilling shows that there is an appreciable “nugget effect” associated with gold mineralisation. This effect results in variable gold grades being recorded for MVS vein intercepts. In addition, there is a consistent pattern of moderate to high-grade silver mineralisation associated with all high-grade gold assays received to date. Given this, and noting the nugget effect, it is interpreted that other intercepts on the MVS that have recorded moderate-high grade silver mineralisation suggests that the target zone of the MVS has been intersected but in zones where the nugget effect is prevalent. This is evident in the following intersections:

0.85 metres at 0.43g/t gold and 49.80g/t silver from 153.75 metres in hole BML-005.

0.40 metres at 0.28g/t gold and 108.60g/t silver from 3.00 metres in hole BML-008.

4.10 metres at 0.82g/t gold, 11.31g/t silver from 174.90 metres in hole BML-011.

3.00 metres at 0.85g/t gold and 130.40g/t silver from 152.50 metres in hole BML-012.

6.00 metres at 1.94g/t gold and 18.65g/t silver from 106.00 metres in hole BML-018.

4.00 metres at 0.58g/t gold and 19.25g/t silver from surface and 6.00 metres at 0.70g/t gold and 12.33g/t silver from 84.00 metres in hole BML-025.

In addition to the above, drilling along the MVS is showing that particular sections of the vein corridor contain eluvium or colluvium hosting low-grade gold-silver mineralisation. Eluvium or colluvium is present in the interval from surface to down hole depths of 6-7 metres as shown in holes BML-024 and BML-026. Intercepts in this material in holes BML-024 and BML-026 are as follows:

7.00 metres from surface at 0.50g/t gold and 2.60g/t silver in BML-024.

6.00 metres from surface at 0.72g/t gold and 2.28g/t silver in BML-026 (Figure 4).

The near surface gold-silver mineralisation in holes BML-024 and BML-026 are interpreted to be a result of erosion of the MVS and related Layong and Francisco veins

over time and deposition of vein material in the eluvial and/or colluvial profile.

Shaft No.2

Further results for channel sampling in Shaft No. 2 have provided better definition on the nature and extent of mineralisation on the northern strike drive on Level 1 (Figures 5). Further significant results include:

- 1.00 metre at 3.42g/t gold and 10.90g/t silver.
- 1.50 metres at 13.86g/t gold and 31.90g/t silver.
- 1.00 metre at 6.68g/t gold and 21.20g/t silver.
- 1.50 metres at 3.03g/t gold and 12.40g/t silver.
- Stope ore grab sample grading 43.79g/t gold and 92.10g/t silver.

Mapping and sampling has defined a 1.00-1.50 metre mineralised sheared quartz-sulphide vein on the hanging wall of the MVS in Shaft No.2 containing consistent gold and silver mineralisation.

COPPER-GOLD

Layab Porphyry

Lindian has received initial results for drilling of a new zone of porphyry style copper±silver±gold zone on the east coast of Masapelid Island.

Assay results show that diamond drill hole BML-027 targeted to test the easternmost extent of the Manuel Vein System (MVS) has intersected a broad zone of porphyry style copper mineralisation with associated low levels of gold and silver mineralisation (Figure 6). Whilst porphyry rock types have not been recorded in hole BML-027, the style and extent of mineralisation is very similar to that recorded in drilling of the Sabang Prospect on the southern portion of Masapelid Island. Hole BML-027, drilled to a depth of 182.90 metres recorded mineralisation over a significant portion of its total drilled depth.

At the Layab Porphyry, copper±silver±gold mineralisation has been confirmed in variably argillised, chloritised and silicified andesite and andesitic breccia host rocks.

Significant results obtained include:

174.00 metres from 2.00 metres at 0.22% copper, 0.50g/t silver including:

19.00 metres from 2.00 metres at 0.40% copper, 1.91g/t silver and 0.16g/t gold which also includes an interval of 4.00 metres from 11.00 metres at 0.31% copper, 6.70g/t silver and 0.65g/t gold.

70.00 metres from 43.00 metres at 0.24% copper, 0.36g/t silver and 0.06g/t gold which also contains an interval of 2.00 metres from 43.00 metres at 0.71% copper, 1.45g/t silver and 0.10g/t gold.

9.00 metres from 167.00 metres at 0.33% copper, 0.20g/t silver and 0.15g/t gold.

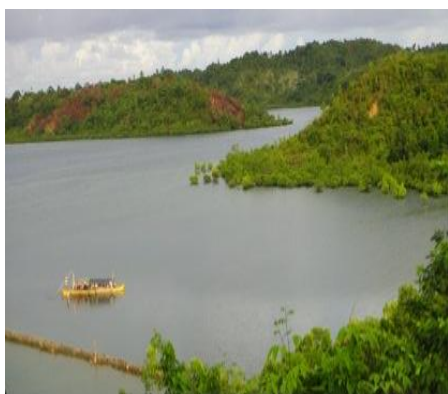
Assay results are awaited for a scissor hole, BML-028 that has been drilled across the same zone of mineralisation (Figure 6).

The low-grade nature of copper and precious metals in the comparatively near surface environment in hole BML-027 is usual in island arc settings where there is typical acid leaching of copper (and other metals). Given this, the company considers that the results from hole BML-027 are highly significant.

Pending receipt of results from BML-028, the company will assess data for this new discovery and plan follow up work to assess its full potential.



Core logging activities – Masapelid



Layab Porphyry Prospect (Right hand side of picture).

Sabang Prospect

Drilling continued on the Sabang Prospect (Figure 7) during the quarter with results being received for drill holes BMS-002 to BMS-006 inclusive. Significant results received include:

250.30 metres at 0.31% copper and 2.12g/t silver from 14.00 metres in hole BMS-002.

Including a secondary copper supergene intercept of 7.00 metres at 0.85% copper and 15.94g/t silver from 14.00 metres.

222.00 metres at 0.40% copper, 1.61g/t silver and 0.15g/t gold from 3.00 metres in hole BMS-004.

Including a secondary copper supergene intercept of 28.00 metres at 0.73% copper and 3.54g/t silver (and 0.13g/t gold) from 14.00 metres.

492.80 metres at 0.21% copper, 0.09g/t gold and 1.42g/t silver from 8.00 metres in hole BMS-006, including:

19.00 metres at 0.31% copper, 0.14g/t gold and 2.47g/t silver from 94.00 metres.

32.00 metres at 0.32% copper, 0.11g/t gold and 4.28g/t silver from 139.00 metres.

10.00 metres at 0.11% copper, 0.37g/t gold and 2.47g/t silver from 250.00 metres.

10.00 metres at 0.16% copper, 0.34g/t gold and 3.21g/t silver from 280.00 metres.

5.00 metres at 0.36% copper, 0.38g/t gold and 0.78g/t silver from 353.00 metres, and

15.00 metres at 0.38% copper, 0.24g/t gold and 1.39g/t silver from 365.00 metres.

Drill results show that Sabang contains widespread low-grade copper-silver±gold mineralisation. Exploration drilling at Sabang has not as yet intersected porphyritic rock types. However, “porphyry style” copper mineralisation drilled in holes BML-001 to BML-006 is extensive and suggests the area subject of initial drilling has intersected mineralisation in outer shell or halo, peripheral to a copper-silver±gold porphyry.

Drill results have also defined a sub-horizontal zone of near surface supergene copper-silver mineralisation blanketing Sabang Hill. The supergene mineralisation has been defined to be 7-28 metres thick, lying 7-16 metres below surface and covering an area of approximately 200 metres x 100 metres. The supergene zone has been intersected in drill holes BMS-002, BMS-004 together with previously reported results from drill hole BMS-001, Adit 1 and Adit 2. The results are significant as a relatively shallow, flat laying supergene blanket of potentially leachable copper with appreciable silver credits is now starting to be defined at Sabang.

Assay results are now awaited for a holes BMS-007(a) and BMS-007(b).

Management believes Sabang is a significant prospect which will continue to provide positive results.



Sabang Prospect – intense silica stockwork outcrop at site of drill hole BMS-008.



Sabang Prospect – drilling operations on hole BMS-005.

OTHER PHILIPPINE'S PROJECTS

Lindian, through its Philippines subsidiary Bundok Mineral Resources Corporation (BMRC), reached agreement with San Manuel Mining Corporation for a 2 year extension to the term of the Salacot, Mt Balantingon and Buena Aurora option to purchase agreements. Those agreements have now been extended to 12 February 2014.

Similarly, Lindian through BMRC has reached agreement with Mr. Manuel G. Arteficio for a 2 year extension to the Exciban option to purchase agreement. That agreement has also been extended to 12 February 2014.

GUINEA

Dinguiraye Pt-Ni-Cu Project (LIN 92%)

The Company is considering further options for the Dinguiraye Project.

CORPORATE

The Company announced a placement of options on the basis of one (1) new Option for every one (1) Listed Option (LINO) held by Optionholders registered as at 5.00pm (WST) on 31 December 2011 at an issue price of 2 cents per Option to raise approximately \$2,730,580. The options will have an expiry date of 31 December 2014 and an exercise price of 8 cents.

The placement was approved by shareholders at a general meeting held on 30 January 2012.

Steve Leithead
Managing Director

COMPETENT PERSONS STATEMENT

The information in the above announcement that relates to Exploration Results is based on information compiled by Mr Steven Leithead, who is a member of the Australasian Institute of Mining and Metallurgy. Mr Leithead is a Director of Lindian Resources Limited. Mr Leithead has sufficient experience which is relevant to the style of mineralisation and type of deposit under consideration and to the activity which he is undertaking to qualify as a Competent Person as defined in the 2004 Edition of the "Australasian Code for Reporting of Exploration Results, Mineral Resources and Ore Reserves". Mr Leithead consents to the inclusion in the report of the matters based on his information in the form and context in which it appears.

DISCLAIMER

The announcement may contain certain forward-looking statements. Words 'anticipate', 'believe', 'expect', 'forecast', 'estimate', 'likely', 'intend', 'should', 'could', 'may', 'target', 'plan', and other similar expressions are intended to identify forward-looking statements. Indication of, and guidance on, future earnings and financial position and performance are also forward-looking statements.

Such forward-looking statements are not guarantees of future performance, and involve known and unknown risks, uncertainties and other factors, many of which are beyond the control of Lindian, its officers, employees, agents and associates, which may cause actual results to differ materially from those expressed of implied in such forward-looking statements.

Actual results, performance, or outcomes may differ materially from any projections or forward-looking statements or the assumptions on which those statements are based.

You should not place any undue reliance on forward-looking statements and neither Lindian nor its directors, officers, employees, servants or agents assume any responsibility to update such information.



Figure 1: Lindian Resources Limited – Philippines Projects.

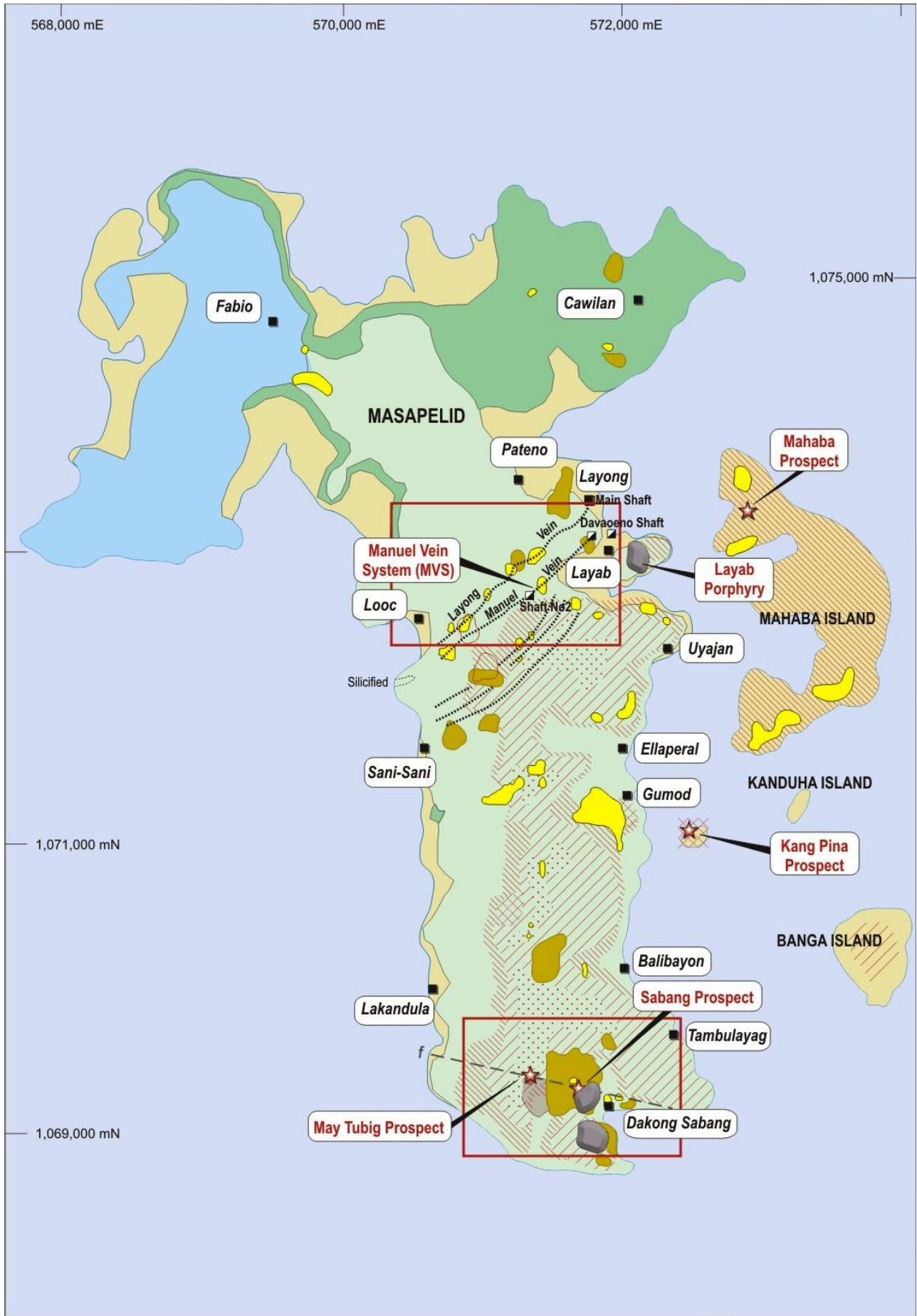


Figure 2: Masapelid Project

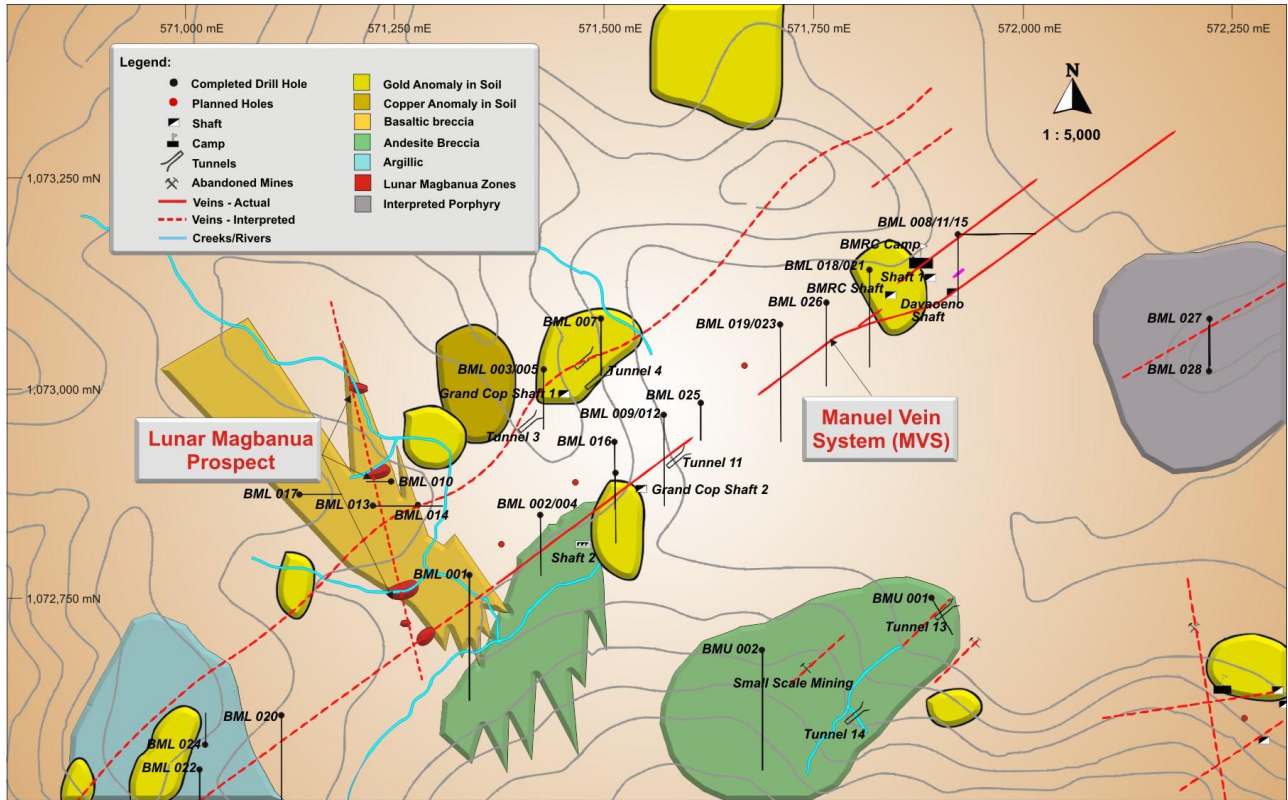


Figure 3: Layab Prospect Plan - showing position of MVS

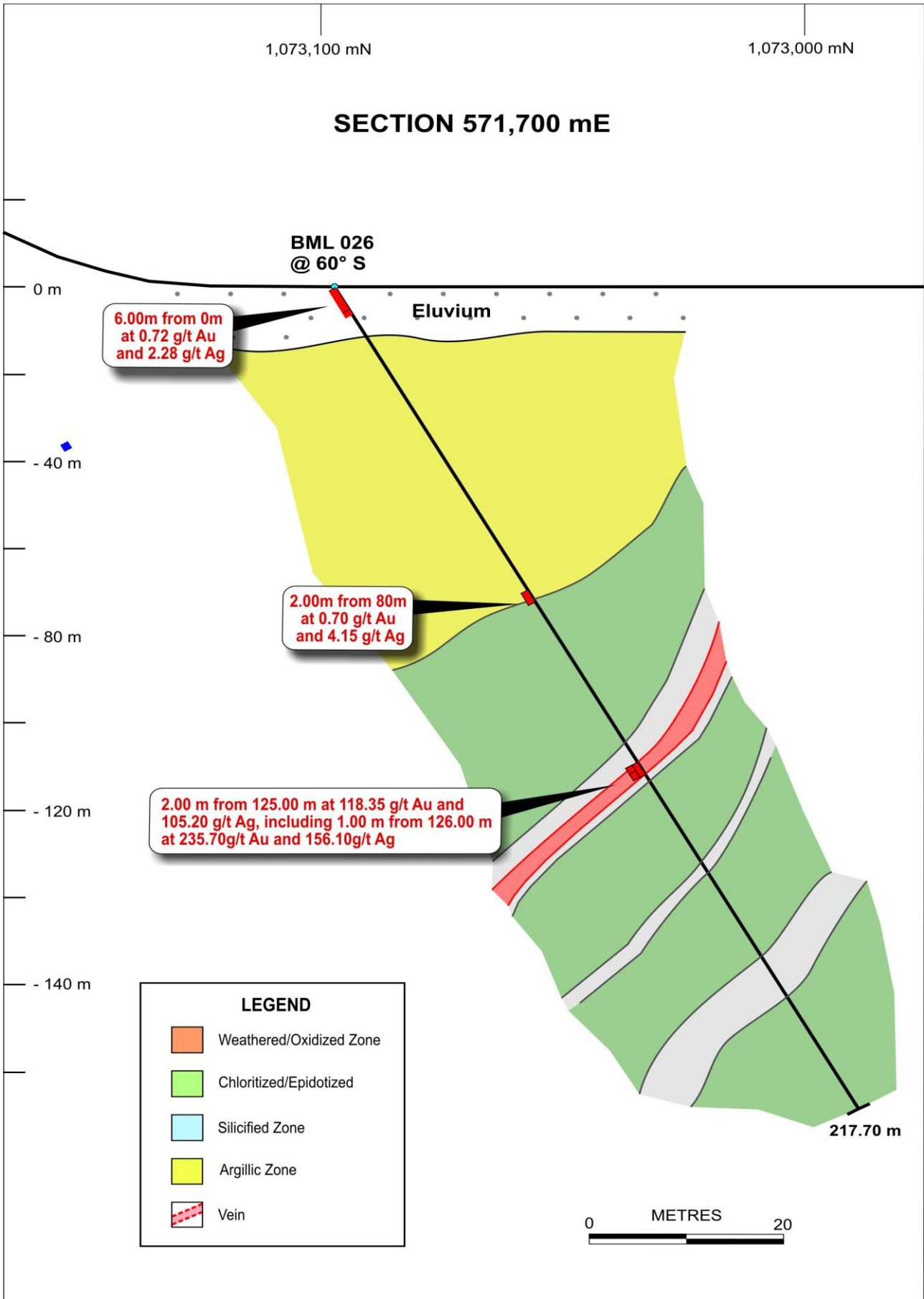


Figure 4: MVS – Section 571700mE showing drill hole BML-026.

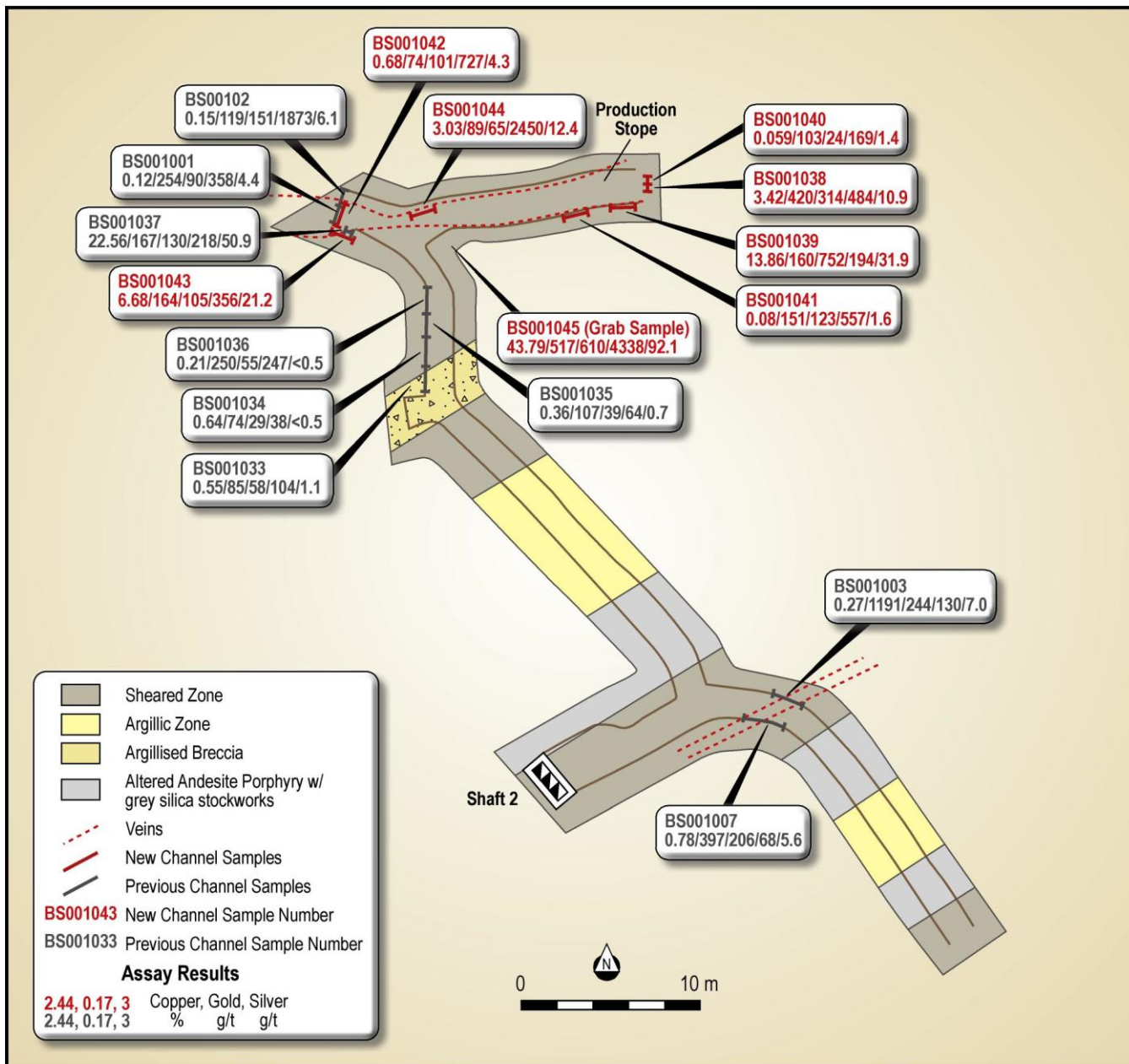


Figure 5: Shaft No.2 - Additional Channel Sample Results.

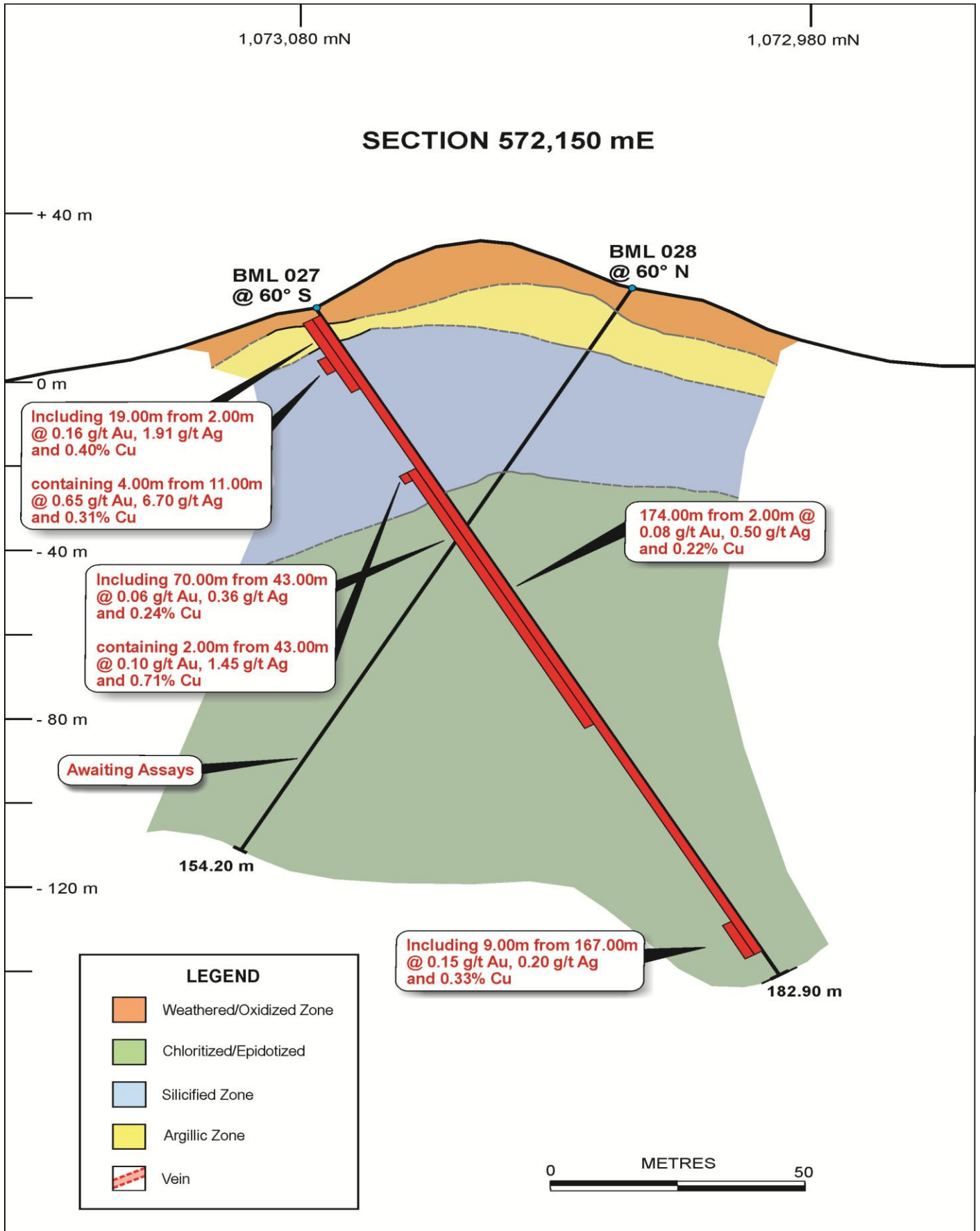


Figure 6: Layab Porphyry - Section 572150mE showing drill holes BML-027 and BML-028.

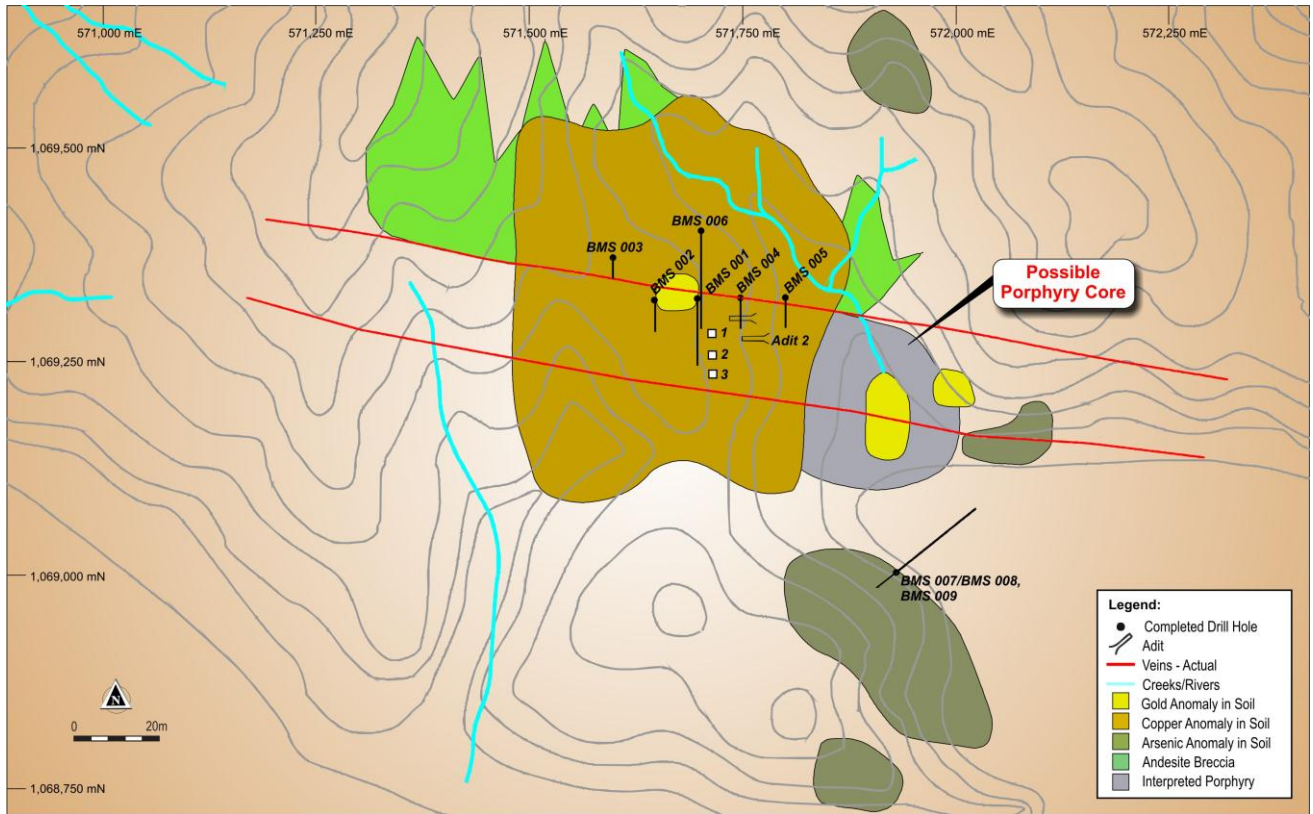


Figure 7: Sabang Prospect Plan.

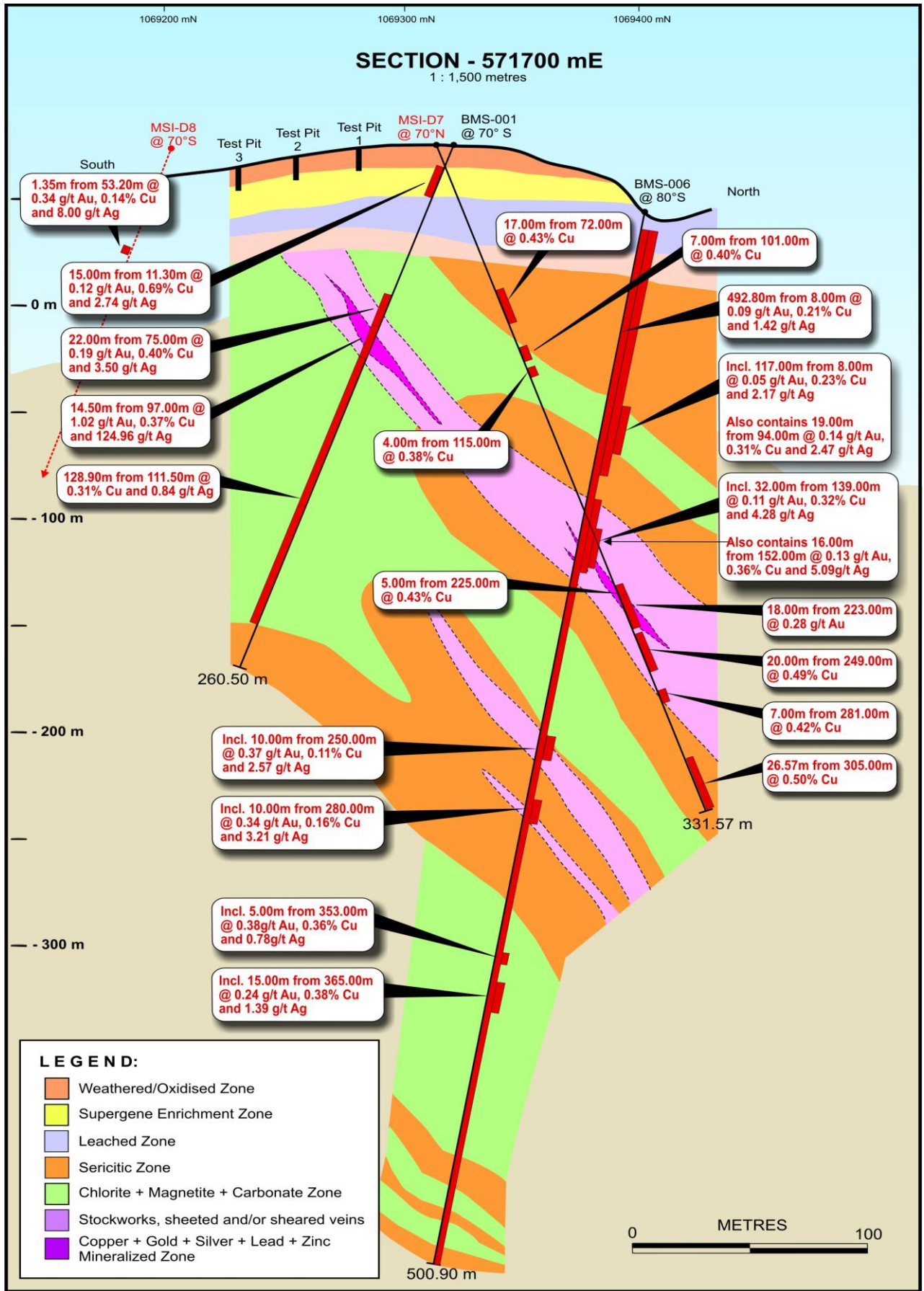


Figure 8: Sabang Prospect – Section 571700mE showing drill holes BMS-001 and BMS-006.

Table 1: Masapelid Project – Drill Hole Summary and Significant Results

Prospect	Hole Number	Easting	Northing	Azimuth	Dip	Depth (metres)	From (metres)	To (metres)	Interval (metres)	Gold (g/t)	Silver (g/t)	Copper (%)	Lead (%)	Zinc (%)
LAYAB PROSPECT														
	BML 003	571353	1073023	180	-60	109.90	87.50	87.70	0.20	0.53	24.70	0.21		
	BML 005	571353	1073023	180	-70	175.40	31.20	35.30	4.10	0.53	0.82	0.13		
	and						97.00	100.00	3.00	0.53	1.07	0.13		
	and						153.75	154.60	0.85	0.43	49.80	0.91		
	BML 006	571439	1072900	180	-60	173.20	152.00	153.00	1.00	1.68				
	BML 007	571422	1073083	180	-60	145.00	95.10	97.80	2.70	1.15	5.83	0.17		
	and						114.00	114.20	0.20	0.40	3.90	0.10	0.23	0.14
	BML 008	571349	1072850	180	-60	130.00	3.00	3.40	0.40	0.28	108.60	2.57	0.60	0.48
							95.10	97.80	2.70	1.15				
	BML 011	571349	1072850	180	-75	220.00	84.00	85.00	1.00	0.72				
	and						174.90	179.00	4.10	0.82	11.31	0.48	0.62	1.70
	BML 012	571497	1072969	180	-70	304.00	152.50	155.50	3.00	0.85	130.40	0.05	0.27	0.47
	and						187.00	188.00	1.00	0.48	3.20			
	BML 015	571349	1072850	90	-60	153.50	3.80	4.65	0.85	0.14	17.60	1.87	0.28	
	BML 018	571742	1073141	180	-60	170.00	106.00	112.00	6.00	1.94	18.65	0.17		0.38
	and						152.00	155.00	3.00	2.24	0.60			
	including						155.00	154.00	1.00	4.42	0.70			
	BML 019	571635	1073076	180	-60	175.00	2.10	4.20	2.10	0.13	4.40		0.56	
	and						14.00	16.00	2.00					2.15
	and						42.00	44.00	2.00	39.31	27.05			
	including						43.00	44.00	1.00	78.35	52.70		0.14	0.22
	and						47.00	48.00	1.00	0.76				
	and						118.00	121.00	3.00	0.65	2.23			
	and						127.00	133.00	6.00	0.66	3.80			
	including						128.00	129.00	1.00	0.95	5.00			0.17
	including						129.00	130.00	1.00	0.97	10.20			0.41
	including						130.00	131.00	1.00	0.72	3.20			0.21
	BML 020	571058	1072624	180	-60	141.60	10.00	14.00	4.00	0.29				
	and						121.00	125.00	4.00	0.28				0.14
	and						131.00	133.00	2.00	0.26				
	BML 021	571742	1073141	180	-70	198.05	181.00	184.00	3.00	4.38	28.00	0.08	0.15	0.36
	including						182.00	183.00	1.00	12.17	76.80	0.18	0.32	0.87

Prospect	Hole Number	Easting	Northing	Azimuth	Dip	Depth (metres)	From (metres)	To (metres)	Interval (metres)	Gold (g/t)	Silver (g/t)	Copper (%)	Lead (%)	Zinc (%)
	BML 022	570090	1072610	180	-60	140.00	44.00	45.00	1.00	0.62	0.80			
	and						81.00	82.00	1.00	0.45	0.60			
	BML 023	571635	1073076	180	-70	242.00	0.00	4.00	4.00	0.58	19.25		0.43	
	and						36.00	37.00	1.00	1.08	1.10			
	and						55.00	56.00	1.00	0.53	3.40			
	and						84.00	89.00	6.00	0.70	12.33		0.13	0.24
	and						110.00	123.00	13.00	0.23	2.52			
	and						183.00	209.00	26.00	0.56	3.05			
	including						205.00	209.00	4.00	1.28	4.63			
	BML 024	570950	1072576	360	-60	150.00	0.00	7.00	7.00	0.50	2.60		0.15	0.23
	BML 025	571541	1072874	180	-60	179.25	178.00	179.25	1.25	0.53	2.20			
	BML 026	571698	1073120	180	-60	217.70	0.00	6.00	6.00	0.72	2.28			
	and						80.00	82.00	2.00	0.70	4.15			
	and						125.00	127.00	2.00	118.35	105.20		0.86	1.16
	including						125.00	126.00	1.00	0.99	54.30		1.67	2.07
	including						126.00	127.00	1.00	235.70	156.10		0.04	0.25
LAYAB PORPHYRY PROSPECT														
	BML 027	512149	1073083	180	-60	182.90	2.00	176.00	174.00	0.08	0.50	0.22		
	Including						2.00	21.00	19.00	0.16	1.91	0.40		
	Which also contains						11.00	15.00	4.00	0.65	6.70	0.31		
	Including						43.00	113.00	70.00	0.06	0.36	0.24		
	Which also contains						43.00	45.00	2.00	0.10	1.45	0.71		
	including						167.00	176.00	9.00	0.15	0.20	0.33		
	BML 028	125.65747	9.70301	360	-60	154.20				At Laboratory				
LUNAR-MAGBANUA PROSPECT														
	BML 010	571172	1072890	270	60	70.8				No significant results				
	BML 013	571150	1072861	90	-60	180.00	168.00	170.00	2.00	0.12	4.40	0.05	0.50	0.02
	including						169.00	170.00	1.00	0.17	8.80	0.04	1.72	0.04
	BML 014	571204	1072861	90	60	70.05				No significant results				
	BML 017	571062	1072874	90	-60	110.00	29.00	31.00	2.00	0.39	1.95			
SABANG PROSPECT														
	BMS 002	571647	1069322	180	-80	266.30	14.00	266.30 (EOH)	250.30	0.11	2.12	0.31		
	including						16.00	23.00	7.00	0.06	15.94	0.85		

Prospect	Hole Number	Easting	Northing	Azimuth	Dip	Depth (metres)	From (metres)	To (metres)	Interval (metres)	Gold (g/t)	Silver (g/t)	Copper (%)	Lead (%)	Zinc (%)
	including						61.00	70.00	9.00	0.05	5.11	0.19		
	including						117.60	170.00	52.40	0.06	2.47	0.43		
	including						254.00	257.00	3.00	0.78	0.97	0.34		
	BMS 003	571597	1069372	180	-80	155.70				No significant results				
	BMS 004	571747	1069325	180	-80	257.70	3.00	225.00	222.00	0.15	1.61	0.40		
	including						7.00	35.00	28.00	0.13	3.54	0.73		
	including						7.00	153.00	146.00	0.19	1.79	0.50		
	BMS 005	571800	1069326	180	-80	313.60	0.00	198.00	198.00	0.04	0.57	0.22		
	BMS-006	571700	1069401	180	-80	500.90	8.00	500.90 (EOH)	492.80	0.09	1.42	0.21		
	including						8.00	125.00	117.00	0.05	2.17	0.23		
	Which also contains						94.00	113.00	19.00	0.14	2.47	0.31		
	including						139.00	171.00	32.00	0.11	4.28	0.32		
	Which also contains						152.00	168.00	16.00	0.13	5.09	0.36		
	including						250.00	260.00	10.00	0.37	2.57	0.11		
	including						280.00	290.00	10.00	0.34	3.21	0.16		
	including						353.00	358.00	5.00	0.38	0.78	0.36		
	Including						365.00	380.00	15.00	0.24	1.39	0.38		
	BMS-007a	571929	1069002	45	-60	45.00				At Laboratory				
	BMS-007b	571927	1069000	45	-60	405.10				At Laboratory				
	BMS-008	571925	1068998	45	-75	200.60				Commenced and completed in January 2012 Quarter. At Core Farm				
	BMS-009	571924	1068997	225	-60	Drilling				Commenced in January 2012 Quarter. In Progress - Drilling				

Table 2: Shaft No.2 – Additional Channel Sample Results

Location	Heading	Description	Interval (metres)	Gold (g/t)	Silver (g/t)
No.2 Shaft	Level 1 North Drive	1m vertical channel across 0.75m thick vein.	1.00	3.42	10.90
	Level 1 North Drive	1.5m thick vein	1.50	13.86	31.90
	Level 1 North Drive	Wallrock	1.00	0.06	1.40
	Level 1 North Drive	Wallrock adjacent to winze	1.00	0.08	1.60
	Level 1 North Drive	South face	1.00	0.68	4.30
	Level 1 North Drive	20cm vein included in 1m horizontal sample	1.00	6.68	21.20
	Level 1 North Drive	1.5m vein exposed on floor	1.50	3.03	12.40
	Level 1 North Drive	Quartz vein material near old ore chute	Grab	43.79	92.10