

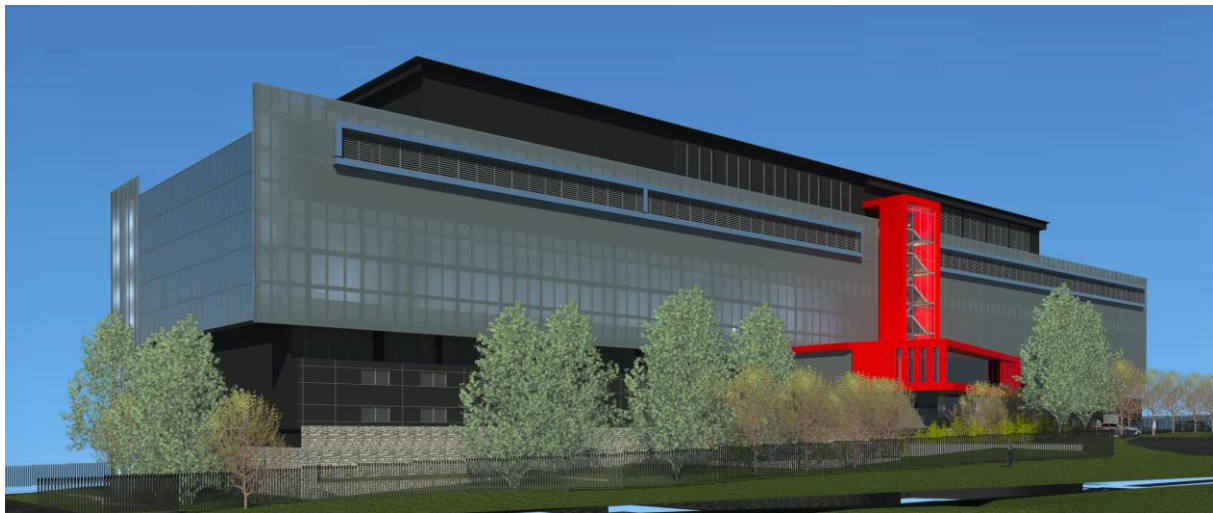


ASX/Media Release

14 November 2011

NEXTDC RECEIVES SYDNEY DEVELOPMENT CONSENT

The Directors of NEXTDC Limited (**ASX:NXT**) (“the Company” or “NEXTDC”) are pleased to advise that the Company has now received formal development consent from the City of Ryde to construct its energy efficient data centre facility at Macquarie Park in Sydney named “S1”.



S1 Sydney: computer-generated render of intended construction design

This formal approval leads to official commencement of NEXTDC’s Sydney data centre construction project and is the start of an exciting journey.

A purpose-built data centre will be constructed to a premium standard, meeting high level security and engineering specifications.

Like NEXTDC’s Melbourne data centre (M1), the S1 data centre design incorporates some of the most advanced energy-saving initiatives including tri-generation plant. Additionally, the S1 design will incorporate direct free air cooling technology, making use of the cooler night-time and winter air temperatures.

Upon completion of this construction project, the independent S1 data centre will provide customers in Sydney with a next generation data centre facility, offering high connectivity, flexibility, scalability, security and a low carbon footprint.

NEXTDC

GPO Box 3219
Brisbane QLD 4001

info@nextdc.com
www.nextdc.com

13 NEXT

ACN 143 582 521

This critical project will be managed by a highly experienced team comprising both in-house and external personnel. FDC Construction & Fitout (“FDC”) will now commence preliminary construction works. NEXTDC has also engaged Arup, a leading global engineering design company that specialises in data centre design, to lead the technical design of this facility.

Additionally, the Company has appointed Mr John Turner as its Project Manager for its S1 facility. Mr Turner previously held senior positions in major corporations including Westpac and CSC, where he was responsible for the delivery of critical operation facilities, data centres and large scale commercial projects throughout Australasia.

ENDS

For more information:

Bevan Slattery

Chief Executive Officer

Robin Khuda

Chief Financial Officer

T: +61 7 3177 4777

E: media@nextdc.com

ABOUT NEXTDC

NEXTDC was established in May 2010 by one of Australia’s most successful information technology and internet entrepreneurs, Mr Bevan Slattery, to build and operate premium data centres in Australia and New Zealand. NEXTDC is the only ASX-listed independent data centre operator with strategic footprint in all major growth markets in Australia, namely Brisbane, Melbourne, Canberra, Perth and Sydney.

NEXTDC offers a range of highly flexible, scalable, resilient and secure colocation services to corporate, government and wholesale customers. NEXTDC’s purpose-built facilities have been designed to address the market’s growing appetite for energy-efficient, independent data centres in which organisations can host their critical IT infrastructure, and also to address the emergence and growth of cloud (internet-based) computing.

As a cloud enabler, NEXTDC’s enterprise-class data centre facilities address the challenges of security, connectivity and neutrality that have hindered the wider acceptance of cloud computing.

Further information is available at www.nextdc.com or www.nextdc.com/blog