

30 August 2016

Market Announcements Platform
ASX Limited
Exchange Centre
20 Bridge Street
Sydney NSW 2000

Norseman Gold Exploration Update

Auroch Minerals Ltd (**Auroch** or the **Company**) is pleased to provide an update on progress at the Norseman Gold Project, Western Australia.

Further to the Company's announcement of 28 July 2016, an exploration program at the Beete Gold Project (P63/1646) and Peninsula Gold Project (P63/1694) will commence in early in September 2016. The programs are designed to cover the entirety of both projects. In addition, surface sampling programs (infill and step-out) will be conducted with up to 100 mulloch, soil, and rock chip samples planned.

The Beete Gold Project (**Figure 1**) is located approximately 55 kilometres south of Norseman, with the Peninsula Gold Project (**Figure 2**) located approximately 27 kilometres north of Norseman. A program of mapping and infill surface sampling is aimed at assessing the potential of known gold mineralisation within a narrow quartz vein, and the adjacent hanging and/or footwall shear. Recorded production post 1974 was 2,816 tonnes of ore at an average grade of 24.8g/t Au [2,300 ounces].

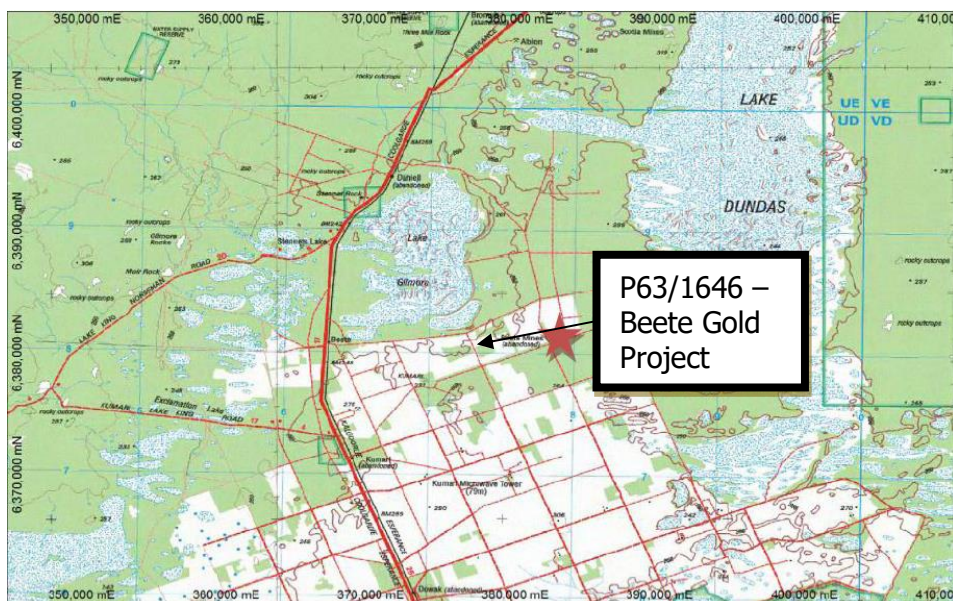


Figure 1 P63/1646 - Beete Gold Project location map.

At the Peninsula Gold Project, a preliminary review of current data shows possible extensions of mineralised north-south trending quartz veins both along strike and at depth. A major quartz reef with five (5) historic mine shafts extends for the length of the tenement and was worked in the late 1800s and intermittently throughout the 1900s. Small scale open cut and underground mining occurred with a trial open pit mining operation yielding 424 t of ore at 2.14 g/t Au, and a decline producing 495 t of ore at 1.62 g/t Au. A program of surface mapping and rock chip sampling will be carried out to assess the strike potential. Pending results from this, a targeted scout drilling program could be planned to test along strike and the down-dip potential of mineralisation in a bid to expand the footprint of mineralisation within the tenement.

The program is planned to be completed by the end of September with results expected by early November.

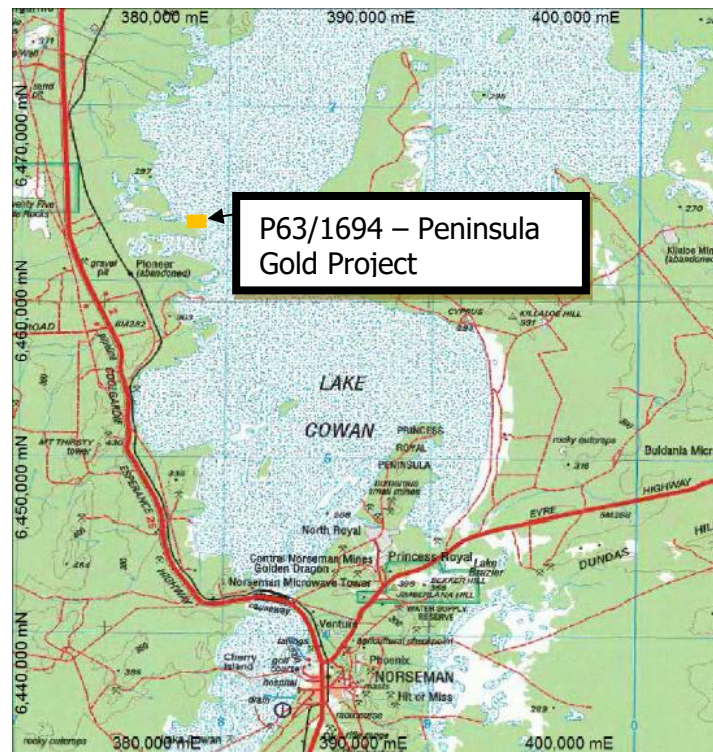


Figure 2 P63/1694 - Peninsula Gold Project location map.

Portfolio Growth

The Company has been seeking to expand its portfolio of projects to provide geological and commodity diversity.

Project opportunities from Africa, North and South America and Europe over the last quarter have been evaluated in detail.

Auroch CEO Dr. Andrew Tunks summed up Auroch's recent evaluation work "The senior management within the Company believe Auroch is a premier vehicle and as such we are being quite selective on the portfolio growth opportunities we will commit to. Good opportunities do exist and we are honing our sights onto projects that offer immediate drilling targets on resource or pre-resource opportunities. We are also strongly focussed on targets in low geological risk environments where world class ore bodies exist in similar geological terrains."

For further information, visit www.aurochminerals.com or contact:

Glenn Whiddon
Executive Chairman

Auroch Minerals Limited

T: +61 8 9486 4036