



To	Company Announcements Office	Facsimile	1300 135 638
Company	ASX Limited	Date	21 June 2013
From	Helen Hardy	Pages	8
Subject	CONTACT MONTHLY OPERATIONAL DATA MAY 2013		

Attached herewith is a copy of an announcement released to the NZX by Contact Energy today.

Origin Energy holds 53.09% of quoted ordinary shares in Contact Energy Limited.

Regards

A handwritten signature in black ink, appearing to read "Helen Hardy".

Helen Hardy
Company Secretary

02 8345 5441 - helen.hardy@originenergy.com.au



Monthly Operational Data

For the month ended 31 May 2013

May 2013

Highlights for May 2013

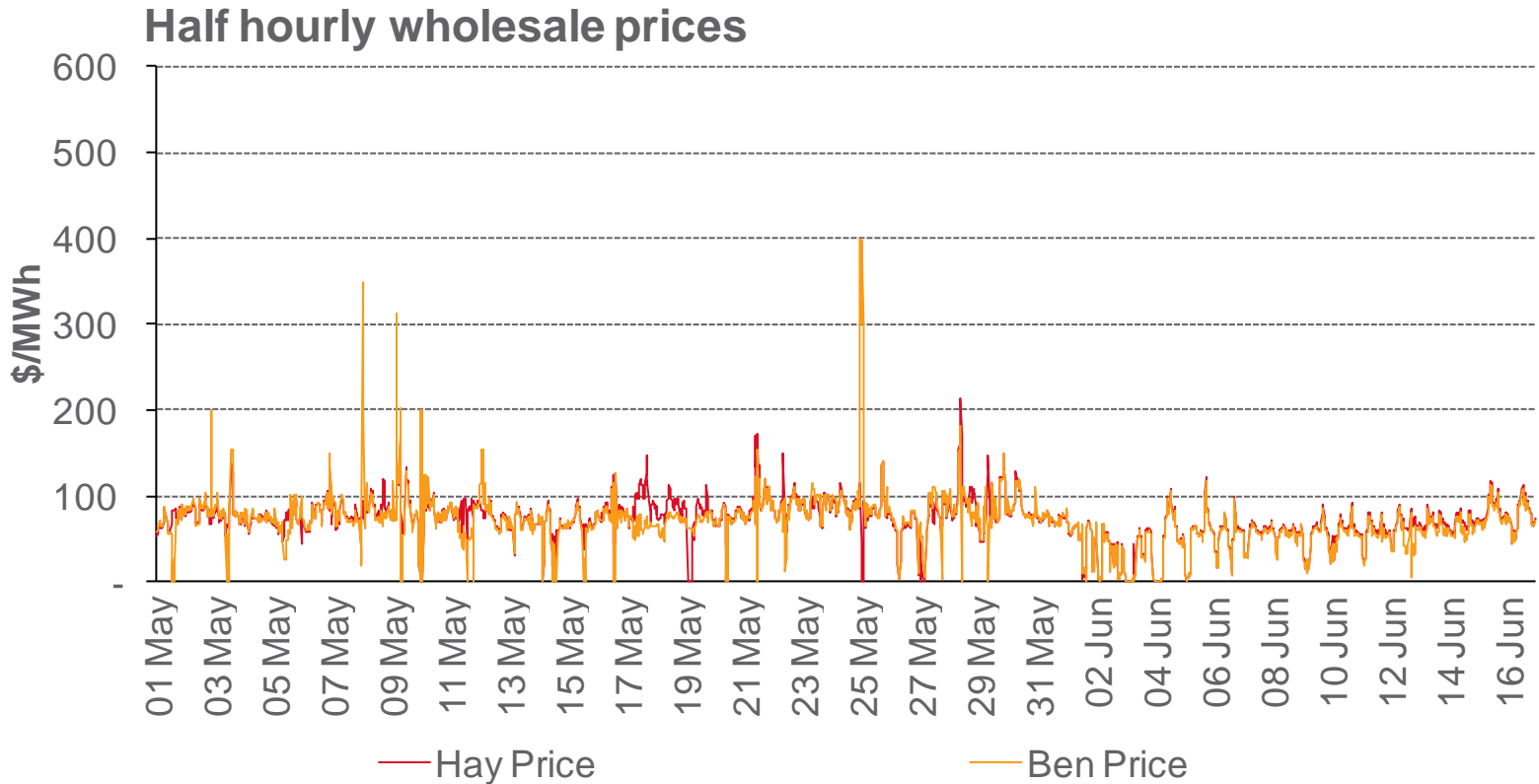


- **Hydro storage as at 31 May: South Island 78% of mean, North Island 71% of mean (p4)**
- **Average Haywards wholesale price for May 2013: \$79/MWh (p3)**
- **Otahuhu futures settlement wholesale price for 2nd quarter 2013 (ASX) (p4):**
 - As at 16 June: \$77/MWh
 - As at 31 May: \$80/MWh
 - As at 30 April: \$95/MWh

Wholesale Electricity Prices

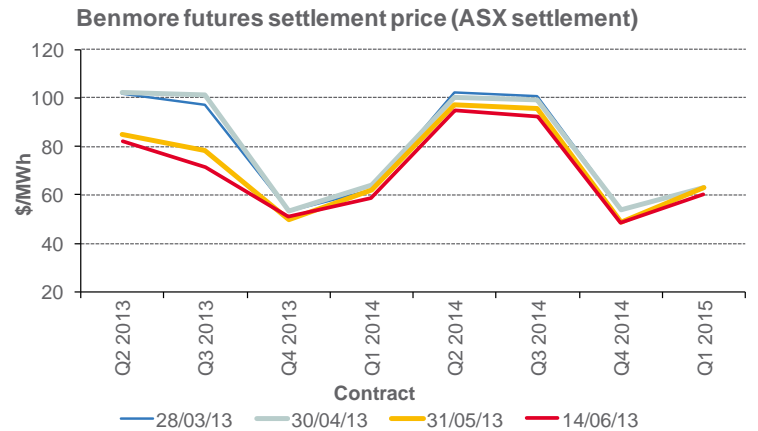
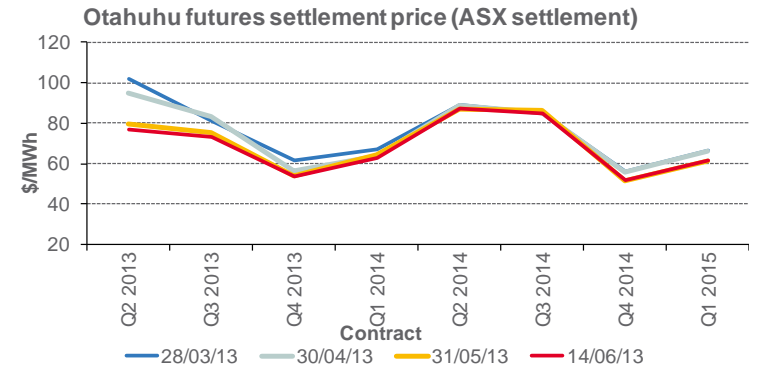
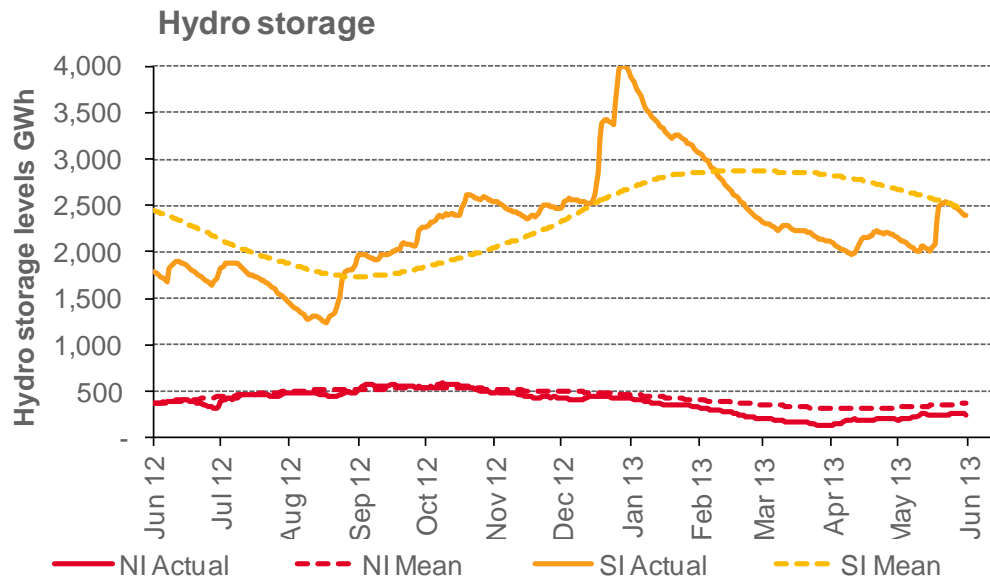


- The average price at Haywards (North Island) for the month of May 2013 was \$79/MWh while the average price at Benmore (South Island) was \$78/MWh.
- The average Haywards price from 1 June to 16 June 2013 was \$57/MWh. The average Benmore price over this period was \$54/MWh.



Storage levels and wholesale electricity prices

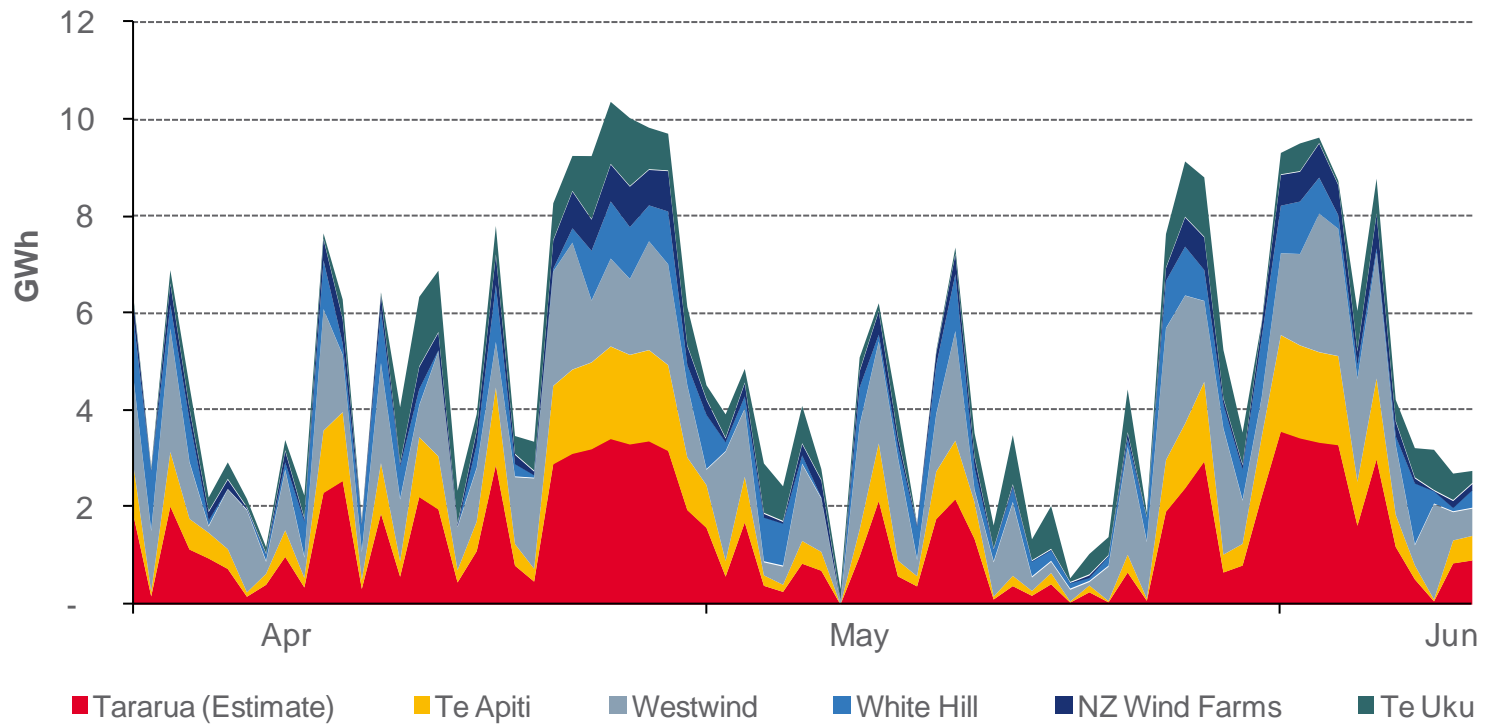
- At 31 May 2013, South Island storage was 78% of mean (30 April: 77%) and North Island storage was 71% of mean (30 April: 62%)
- As at 16 June 2013, storage was:
 - South Island: 97% of mean
 - North Island: 68% of mean



Wind generation



Daily wind generation (SCADA)



Monthly demand comparison

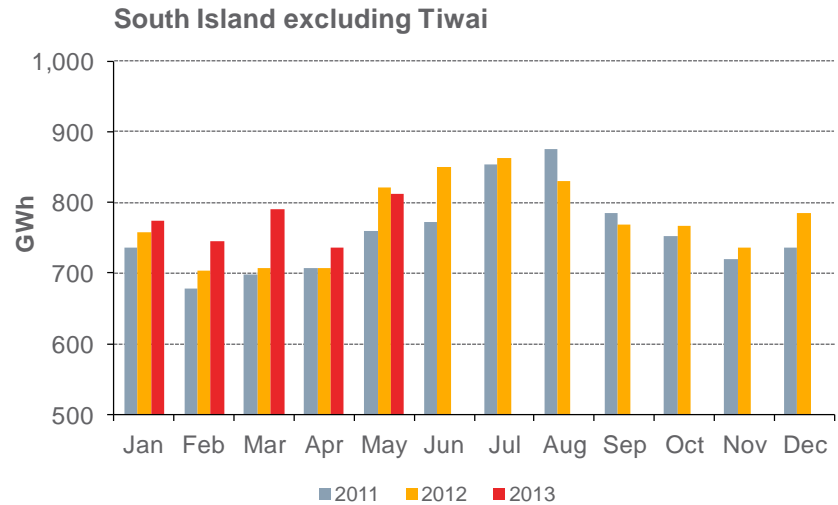
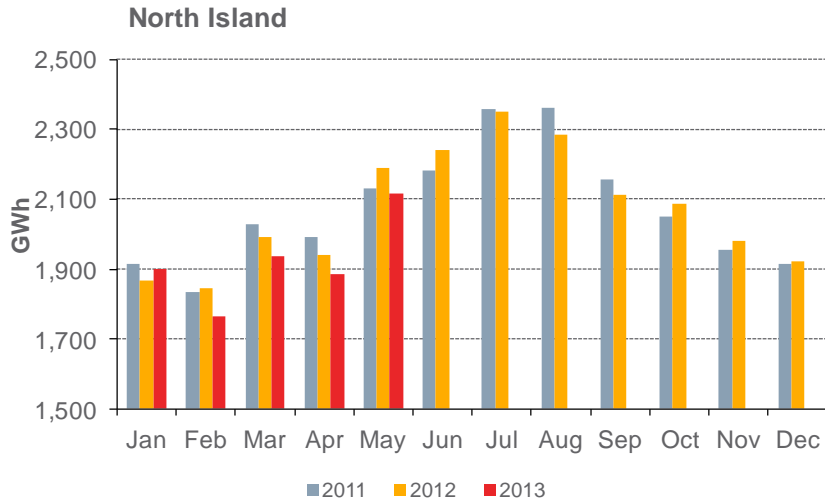


NIWA's National Climate Summary for May 2013 reports:

- The New Zealand national average temperature in May was 11.1°C (0.4°C above the 1971-2000 May average).

Demand	12 months to date			Growth rate		May demand			Growth rate	
	GWh			% p.a.		GWh			% p.a.	
	2013	2012	2011	1 year	2 year	2013	2012	2011	1 year	2 year
North Island	24,582	24,819	24,925	(1.0%)	(0.7%)	2,116	2,191	2,130	(3.4%)	(0.3%)
South Island excluding Tiwai	9,457	9,191	9,376	2.9%	0.4%	813	821	759	(1.0%)	3.5%
Total	34,039	34,010	34,301	0.1%	(0.4%)	2,928	3,012	2,889	(2.8%)	0.7%

Source: SCADA data



Contact Netback, Net Purchase Cost and LPG Data

Data	Measure	The month ended 31 May 2013	The month ended 31 May 2012	The month ended 30 April 2013	Eleven months ended 31 May 2013	Eleven months ended 31 May 2012	
Netback	Mass market electricity sales	GWh	346	357	304	3,689	3,777
	Commercial & industrial electricity sales	GWh	383	348	372	3,863	3,787
	Retail gas sales	GWh	55	58	40	581	621
	Steam sales	GWh	19	37	41	568	659
	Total retail sales	GWh	803	800	757	8,701	8,845
	Average electricity sales price	\$/MWh	195.79	202.40	190.16	183.14	177.56
	Electricity direct pass thru costs	\$/MWh	68.24	72.65	65.53	67.95	64.13
	Electricity and gas cost to serve	\$/MWh	11.89	13.65	13.01	11.95	11.86
	Netback ¹	\$/MWh	107.52	105.51	103.47	93.78	91.11
	Actual electricity line losses	%	7%	9%	3%	5%	5%
	Retail gas sales	PJ	0.2	0.3	0.2	2.2	2.2
	Electricity customer numbers ⁶		439,500	443,000	440,500		
	Gas customer numbers ⁶		61,500	62,000	62,000		
Net Purchase Cost	Thermal generation	GWh	448	495	479	3,737	4,190
	Geothermal generation	GWh	192	187	165	2,063	2,169
	Hydro generation	GWh	284	201	201	3,151	2,637
	Spot market generation	GWh	924	883	845	8,951	8,996
	Swaption	GWh	-	87	-	198	570
	Spot electricity purchases	GWh	780	768	691	7,829	7,842
	CfD sales	GWh	64	105	78	635	616
	GWAP ²	\$/MWh	77.78	136.71	94.95	70.90	89.33
	LWAP ³	\$/MWh	81.51	150.40	102.20	76.95	95.88
	LWAP/GWAP	%	105%	110%	108%	109%	107%
	Gas used in internal generation	PJ	3.6	4.3	3.8	31.9	35.0
	Wholesale gas sales	PJ	0.1	0.1	0.1	2.2	2.3
	Gas storage net movement	PJ	(0.1)	(0.0)	(0.3)	(2.2)	1.5
	Unit generation cost ⁴	\$/MWh	44.22	54.33	53.82	47.74	50.07
	Net purchase cost ⁵	\$/MWh	35.76	40.33	49.91	44.03	43.87
LPG	LPG sales	tonnes	6,107	6,384	5,306	61,381	59,061
	LPG customer numbers (includes franchises) ⁶		65,000	61,500	64,500		

¹ Netback equates to: (retail electricity, gas and steam sales less direct pass thru and cost to serve costs) / (total retail sales volume).

² This is the price received by Contact for its spot generation. It excludes contracts for differences (including swaption) and direct sales.

³ This is the price paid by Contact for its spot electricity purchases. It excludes contracts for differences and other purchase costs.

⁴ Unit generation costs equates to: (total generation fuel, transmission and operating costs) / (Spot market generation). Excludes gas purchases for wholesale and retail gas sales

⁵ Net purchase cost equates to: (total wholesale revenue less unit generation costs and electricity & gas purchases) / (retail sales volume).

⁶ Data has been rounded to the nearest 500 and reflects numbers as at month end.