



“New Frontiers in Gold and PGM Exploration”

Thomas Abraham-James – Exploration Manager

Raw Materials Group 6th Annual Exploration & Mining Investment
Conference, Stockholm: 12-13 November 2009

- International resource development company – listed in Australia (ASX: PGM)
- Global portfolio of PGM and gold assets
- Two advanced Gold/PGM assets at Scoping Study/Pre-Feasibility stage:
 - *Skaergaard (100%) – Greenland*
 - *Munni Munni (100%) – Western Australia*
- Pipeline of exploration projects in Greenland, Namibia and Australia
- Experienced management team with extensive international experience
- Aggressive 2010 exploration and development programs focused on:
 - *Completing PFS at Skaergaard and defining high-grade gold zone*
 - *Progressing Munni Munni towards commercial development*

↳ A global portfolio of emerging gold and PGM projects spanning three continents

NAMIBIA



Southern Cross

GREENLAND



Skaergaard
Miki Fjord Dyke &
Kap Edvard Holm

Sarqa &
Kobberminebugt

AUSTRALIA



Munni Munni

Tadpole Creek

Mt Venn

Fifield

- *Platina Resources Limited is focused on building shareholder wealth through the exploration & development of gold and PGM projects globally*
- *The Company's intention is to become a PGM and gold producer through the development of one or more of its projects and to continue aggressive exploration for PGM's and gold globally*
- *Platina is at the forefront of exploration in Greenland, one of the world's last untapped mineral frontiers*



Robert W. Mosig, Managing Director – MSc, FAusIMM, FAICD

- *Robert Mosig is a geologist with over 30 years experience in Platinum Group Metals, gold and diamond exploration within Australasia.*

Thomas Abraham-James, Exploration Manager – BSc (Hons), MAusIMM

- *Thomas Abraham-James is a geologist who began his career conducting advanced exploration on South Africa's Bushveld Complex (Placer Dome). He later worked as a mine geologist at Rio Tinto's Argyle Diamond Mine before joining Platina. Tom has worked on all of the Company's projects and managed the 2008 and 2009 Greenland exploration field seasons.*

John Ferguson, Non Executive Director – PhD, DSc, FAusIMM, Life Fellow Geological Society of South Africa

- *Dr John Ferguson has been involved in the minerals industry, academia and geological surveys for the past 40 years. He has conducted extensive exploration activities in Australia, southern Africa, Greenland, Canada, Chile, Mexico, Mongolia, and China in particular for diamonds, gold, platinum group elements, uranium and heavy mineral sands.*

Reg Gillard, Non-Executive Chairman – BA, FAICD, FASCPA, MRAJWA

- *Reg Gillard has over 30 years experience in the formation, governance and financial maintenance of exploration and mining companies throughout the world.*

Brian Moller, Non Executive Director – LLB (Hons)

- *Brian Moller is a corporate partner in the Brisbane-based law firm Hopgood Ganim where he has been a partner since 1983. He practices almost exclusively in the corporate area with an emphasis on capital raising, mergers and acquisitions.*

Share Structure (as at November 2009)

- *Platina listed via IPO on the ASX at A\$0.20 per share on May 29, 2006*

Basic issued & outstanding shares	58,621,749
Options on issue	5,503,000
Fully Diluted	64,124,749
Common Shares Listing	ASX: PGM
Share Price (09/11/09)	A\$0.34
Management ownership (fully diluted)	13.02%
Cash in hand	A\$2.5 million
Market Capitalisation	~A\$20 million
Head Office	Varsity Lakes, Queensland

- At forefront of a new generation of significant mineral projects in Greenland
- Located 400km west of geothermal power-rich Iceland
- 100% -owned (no production royalties)
- World-class inferred resource containing 10.23Moz gold, 29.61Moz palladium and 1.95Moz platinum
- Pre-Feasibility Study well advanced with positive Scoping Study review recently completed by GRD Minproc
- Aiming to complete Pre-Feasibility Study by late 2011 to facilitate rapid transition to Definitive Feasibility Study (DFS) in 2012



- Layered intrusion originally discovered in 1930s
- Mineralisation consists primarily of palladium, gold and platinum within a titanium and vanadium-rich magnetite gabbro
- Distinctive trend with high-grade gold located immediately above PGM-rich zone within Au zone
- Region of coherent 2-3g/t Au contours identified within 7.5km² area'
- Evidence that high-grade area could contain combined grades of >4g/t Au + PGM
- Increased drilling required to demonstrate continuity
- 2010 drilling planned to increase drill density to 500m x 500m (250m x 250m) in high-grade areas



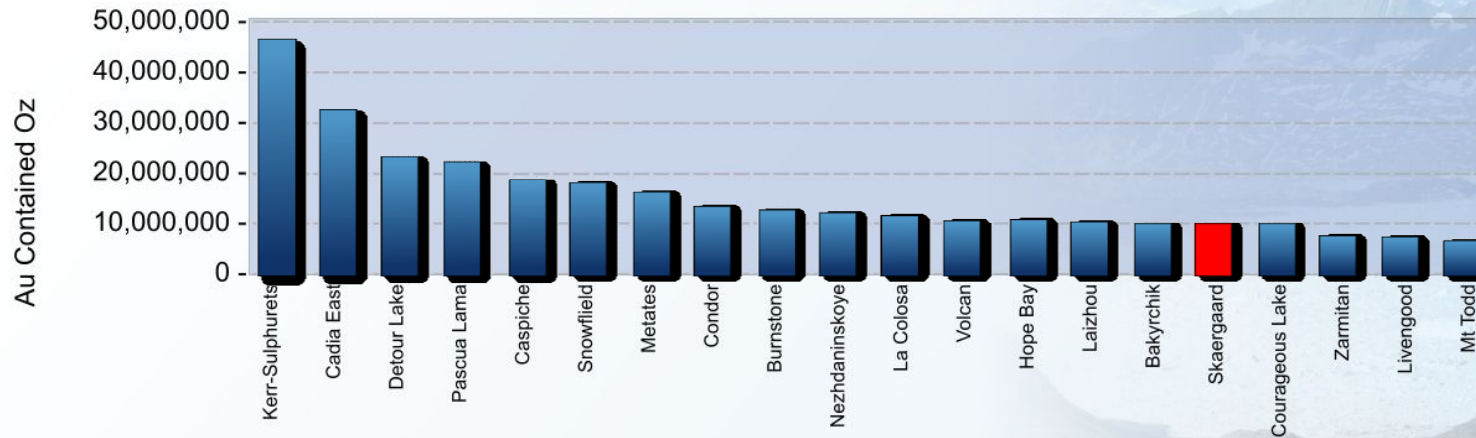
- Skaergaard Intrusion Perimeter
- - Triple Group Horizon surface trace
- 2g/t Au Area
- 3g/t Au Area

Inferred Resource Estimate

		Grades			Contained Metal		
Zone	Metric Tonnes (millions)	Au (g/t)	Pd (g/t)	Pt (g/t)	Au (Moz)	Pd (Moz)	Pt (Moz)
Combined	1,520.0	0.21	0.61	0.04	10.25	29.61	1.95
Contained within the Combined Zone							
Gold	106.6	1.68	0.59	0.05	5.77	2.03	0.17
Palladium	103.5	0.11	1.91	0.16	0.37	6.35	0.53
Combined 17.5 Meter Limited*	191.6	0.27	0.87	0.07	1.66	5.36	0.43
* Refers to that part of the combined Zone with vertical thickness of 17.5m or less to a minimum of 2m							

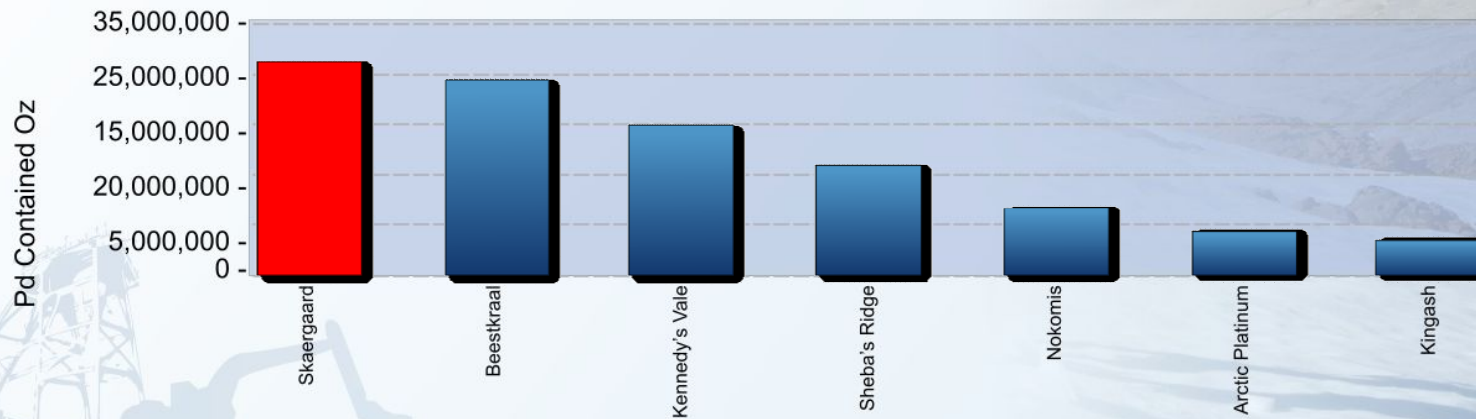
* Inferred Resource Estimate calculated under Canadian National Instrument 43-101

World's Largest Un-developed Gold Deposits (1)



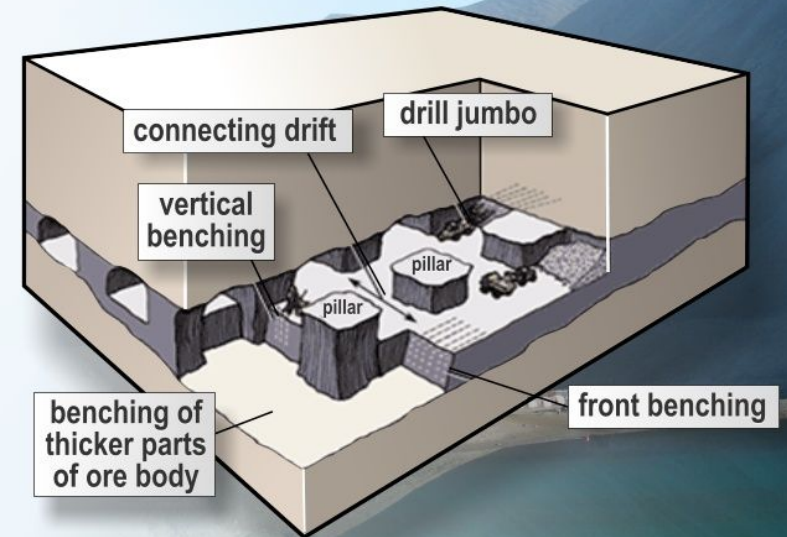
(1) Source MEG: Includes active, wholly-owned projects in either the development, feasibility or preproduction stage.

World's Largest Un-developed Palladium Deposits (1)



(1) Source MEG: Includes active projects in either the development, feasibility or preproduction stage.

- Positive Scoping Study Review completed by GRD Minproc in October 2009
- Confirmed viability of conceptual 2.4Mtpa underground mine development
- Room & pillar mining identified as the preferred underground mining method
- Operating costs ranging from US\$ 49-81/tonne
- Capital expenditure estimate of US\$166 million does not include infrastructure costs (accuracy of + 40%)



- Excellent bench-scale metallurgical recoveries of gold, palladium and platinum achieved from bulk samples – up to 92.7% gold recovery via flotation*



Test Number	Head Grade (g/t)		Mass Pull (%)	Recovery (%)		Cum. Grade (g/t)	
	Au	Pd		Au	Pd	Au	Pd
GJ3216	1.55	0.47	3.4	88.1	88.8	40.6	12.4
GJ3217	1.41	0.49	3.6	89.4	78.5	34.9	10.8
GJ3218	1.50	0.49	4.9	88.7	80.1	27.5	8.2
GJ 3236	1.52	0.48	4.8	92.7	88.9	29.5	8.9
GJ 3237	1.50	0.47	3.8	86.9	83.9	34.4	10.4
GJ 3238	1.47	0.48	5.9	91.6	89.7	22.9	7.3
GJ 3239	1.48	0.51	4.7	90.7	86.9	28.5	9.5

Process Considerations

- Consider harsh climatic conditions, terrain and restricted access (sea ice)
- Minimise surface infrastructure and associated cost:
 - *Cladding*
 - *Power (heating)*
 - *Cash flow*
 - *Produce dore and concentrate*



UNDERGROUND PROCESSING PLANT

- REDUCED SURFACE INFRASTRUCTURE
- REDUCED CAPEX/OPEX
- REDUCED LABOUR COMPONENT
- REDUCED POWER REQUIREMENT

MAXIMISE USE OF GRAVITY

- REDUCED SURFACE INFRASTRUCTURE
- REDUCED CAPEX/OPEX
- IMPROVED NPV
- IMPROVED CASH FLOW DUE TO HIGHER PAYABLE METAL CONTENT AND YEAR ROUND SHIPPING

- CYANIDE FREE PROCESS ROUTE PREFERRED UNLESS SIGNIFICANT ECONOMIC BENEFIT (TABLE TO DIRECT SMELT)
- BY-PRODUCTS CREDITS NOT CONSIDERED
- HPGR TECHNOLOGY – CAPITAL, OPEX, TRANSPORT LOGISTICS

Underground Processing Plant

Reduced:

- Surface infrastructure
- CAPEX
- OPEX
- Labor

Minimal environmental impact (noise, dust)

Smaller TSF footprint

Improved Mine Call Factor

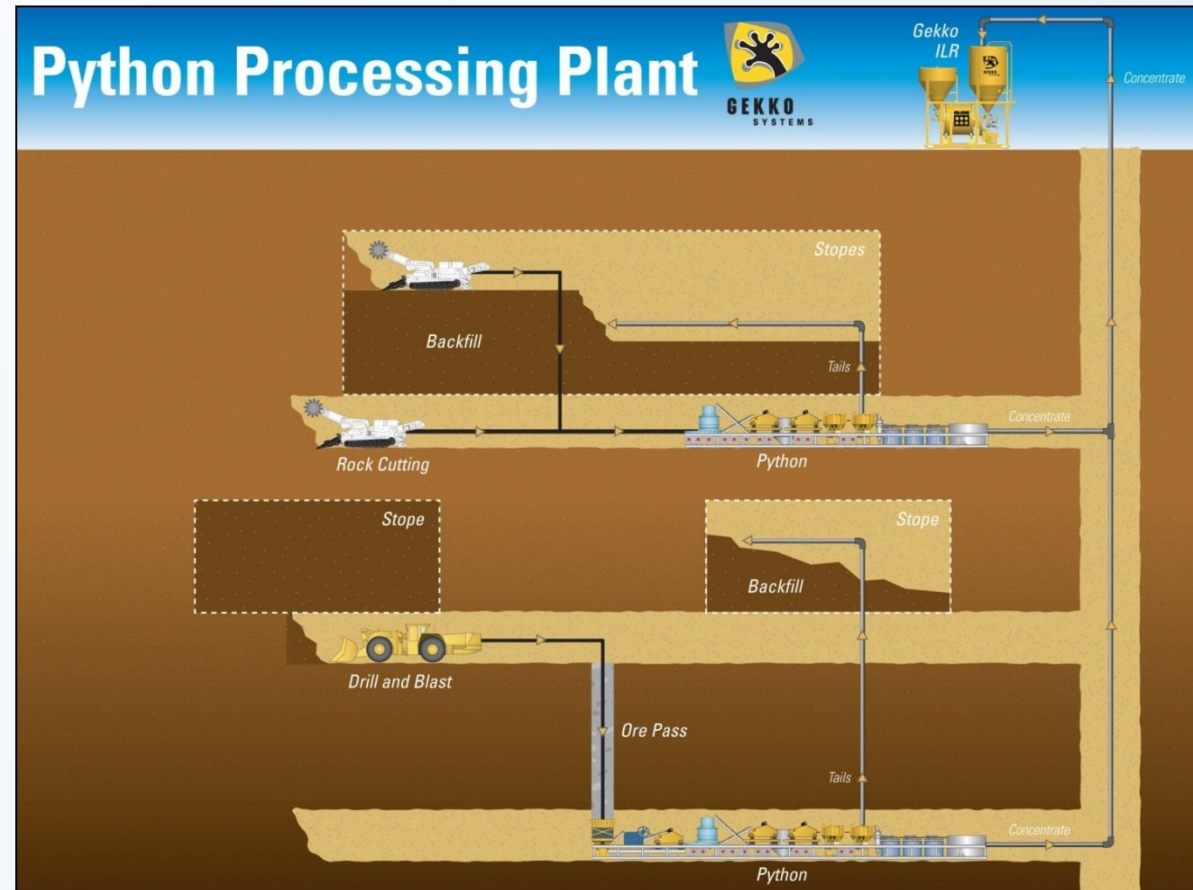
Maximum 50tph

Gravity, Flotation

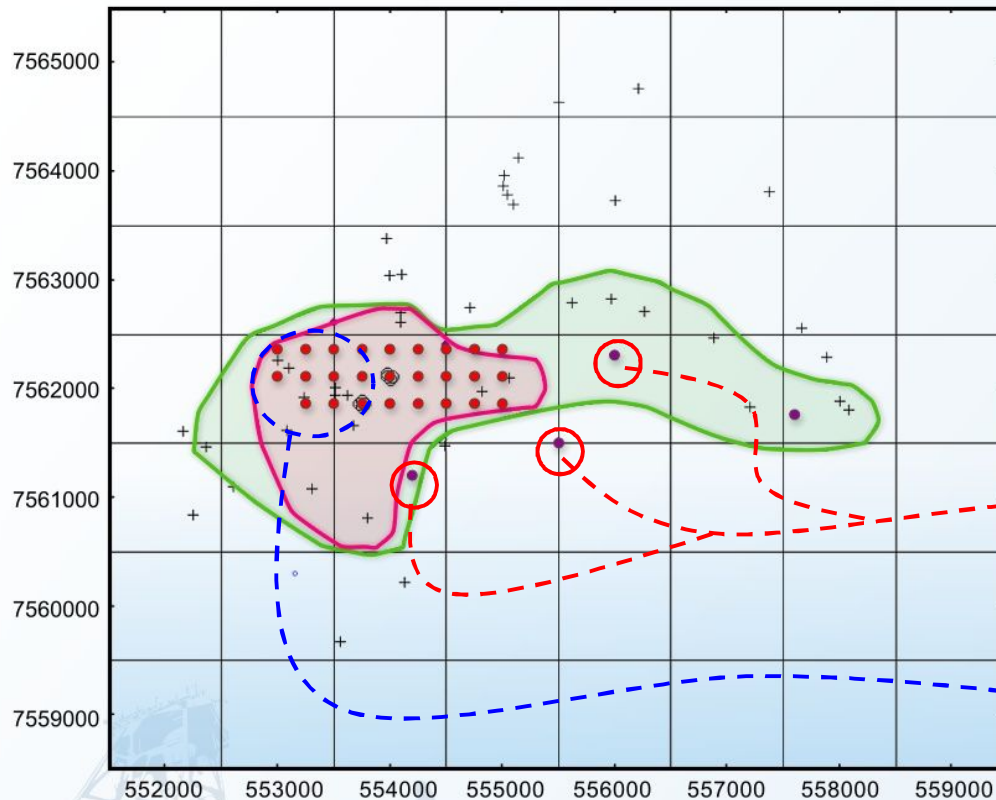
650 μ m (VSI)

A\$ 8/t (excl. Labor)

5m x 5m



Proposed 2010 Drilling



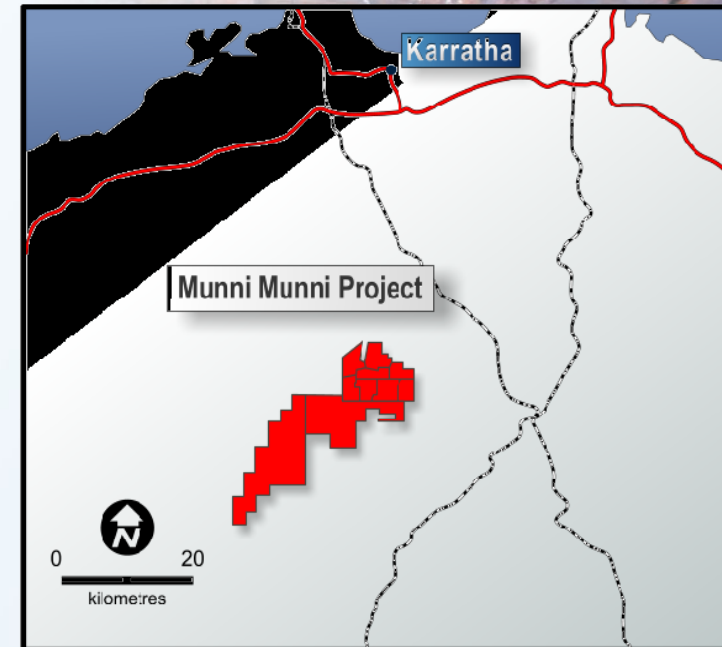
- Focus on higher grade gold zone (>4g/t Au + PGM) identified previously by AMC Consultants
- Planned 6,000m diamond drilling program for 2010 to delineate the gold zone as foundation for a strong, long-life mining operation

2010 field drill program – provide information on margins of 3ppm grade contour

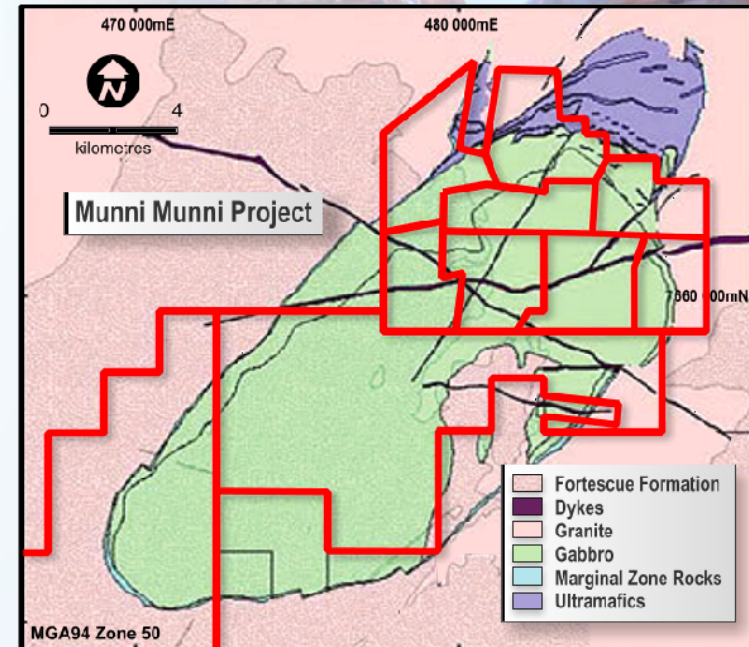
2010 field drill program – 250m x250m infill drilling in area of economic interest



- ↳ Located in the Pilbara region, Western Australia
- ↳ 100% owned by Platina
- ↳ JORC Measured, Indicated and Inferred Resource of 24Mt grading 2.9 g/t PGM's and gold (1.4Mt Inferred, 9.8Mt Indicated, 12.4Mt Measured)
- ↳ Located 40km from a deepwater port and 8km from rail access
- ↳ Grid power and groundwater available on the project site
- ↳ Abundant skilled workforce present nearby



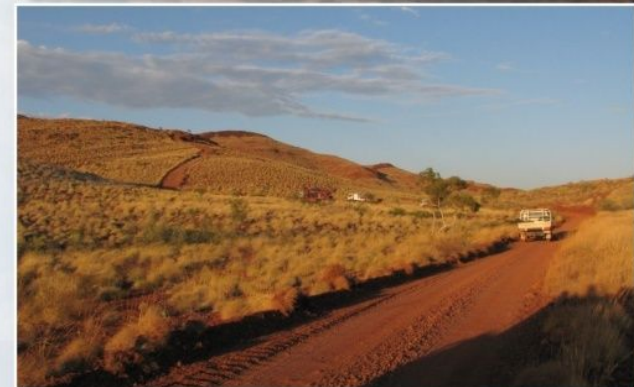
➤ *One of Australia's largest undeveloped platinum-palladium projects*



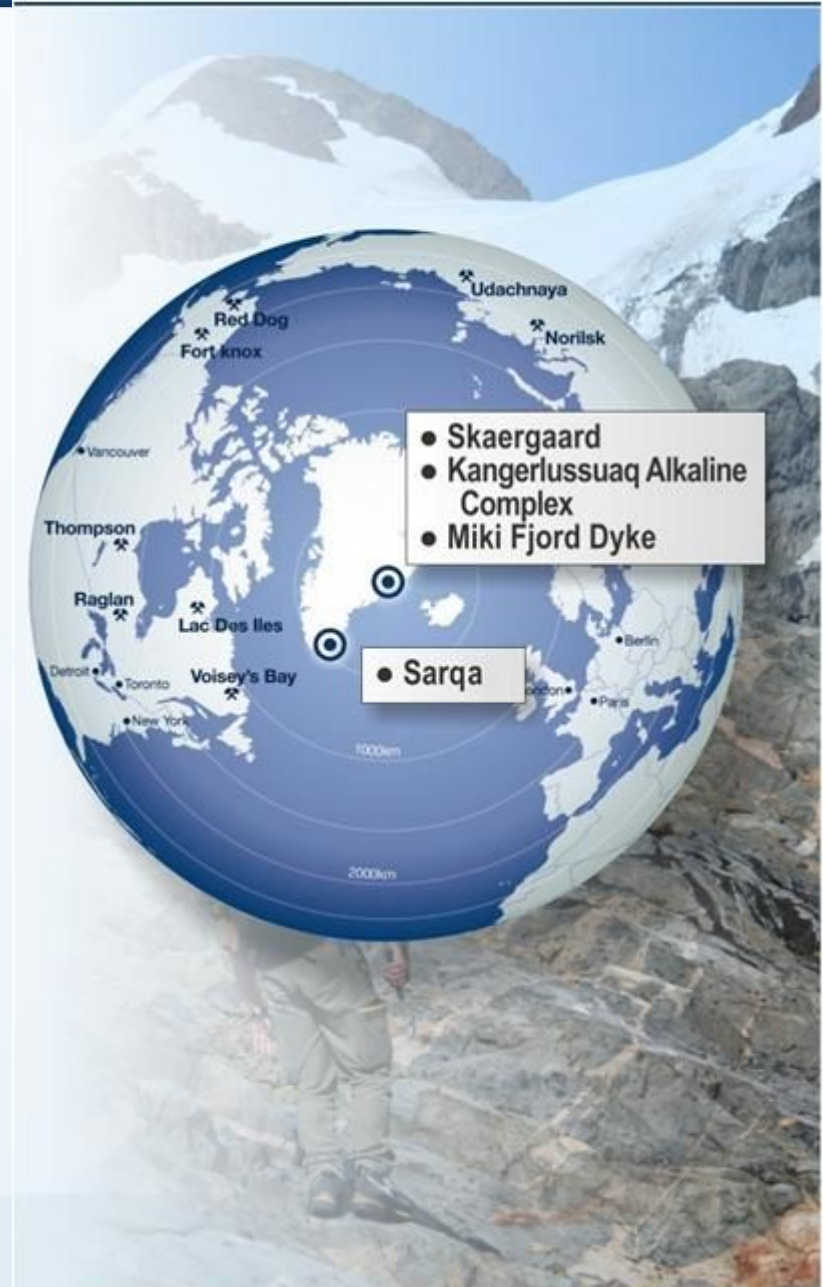
Munni Munni undiluted resource estimate at a cut-off grade of 1.9g/t PGM + Au (SRK, 2002, subsequently confirmed by Snowden, 2003).

JORC Category	Million Tonnes	Pt (g/t)	Pd (g/t)	Au (g/t)	Rh (g/t)	Cu (g/t)	Ni (%)
Measured	12.4	1.1	1.4	0.2	0.1	0.09	0.07
Indicated	9.8	1.1	1.6	0.3	0.1	0.22	0.11
Inferred	1.4	1.1	1.6	0.3	0.1	0.15	0.09
Total	23.6	1.1	1.5	0.2	0.1	0.15	0.09

- Updated conceptual study currently in progress by GRD Minproc
- Objectives of the study are:
 - *To identify potential high-grade portions of the resource*
 - *Review metallurgy and processing options*
 - *Review possibility of on-site smelting*
 - *Review Opex and Capex costs*



- Kangerlussuaq Alkaline Complex
 - ~20km west of Skaergaard
 - 1,000km² circulate target
 - At least 13 satellite intrusions
 - Recent assays from epithermal veins up to 2.5g/t Au, 1,583g/t Ag, 7.7% Cu, 4.3% Mo, 10.1% Pb, 12.2% Zn
 - 100% owned Exploration Licence
- Miki Fjord Dyke
- Sarqa



- ❧ Planning well-advanced for major 6,000m diamond drilling program in 2010 at Skaergaard to confirm high-grade gold zone
- ❧ Complete Pre-Feasibility Study at Skaergaard by end 2011
- ❧ Complete Scoping Study and commence Feasibility Study at Munni Munni PGM Project



- ❧ This presentation contains “forward-looking information” which may include, but is not limited to, statements with respect to the future financial or operating performance of Platina Resources Limited (“Platina”), its subsidiaries and its projects, the future price of platinum group metals (“PGM’s”), the estimation of mineral resources, operating and exploration expenditures, costs and timing of development of new deposits, costs and timing of future exploration, requirements for additional capital, government regulation, environmental risks, reclamation expenses, title disputes or claims and limitations of insurance coverage. Often, but not always, forward-looking statements can be identified by the use of words such as “plans”, “expects”, “is expected”, “budget”, “scheduled”, “estimates”, “forecasts”, “intends”, “anticipates”, or “believes” or variations (including negative variations) of such words and phrases, or state that certain actions, events or results “may”, “could”, “would”, “might” or “will” be taken, occur or be achieved. Forward-looking statements involve known and unknown risks, uncertainties and other factors which may cause the actual results, performance or achievements of Platina and/or its subsidiaries to be materially different from any future results, performance or achievements expressed or implied by the forward-looking statements. Such factors include, among others, general business, economic, competitive, political and social uncertainties; the actual results of current exploration activities; conclusions of economic evaluations; changes in project parameters as plans continue to be refined; future prices of PGM’s; possible variations of ore grade or recovery rates; failure of plant, equipment or processes to operate as anticipated; accident, labor disputes and other risks of the mining industry; and delays in obtaining governmental approvals or financing or in the completion of development or construction activities. Although Platina has attempted to identify important factors that could cause actual actions, events or results to differ materially from those described in forward-looking statements, there may be other factors that could cause actions, events or results to differ from those anticipated, estimated or intended. Forward-looking statements contained herein are made as of the date of this presentation and Platina disclaims any obligation to update any forward-looking statements, whether as a result of new information, future events or results or otherwise. There can be no assurance that forward-looking statements will prove to be accurate, as actual results and future events could differ materially from those anticipated in such statements. Platina undertakes no obligation to update forward-looking statements if circumstances or management’s estimates or opinions should change. Accordingly, the reader is cautioned not to place undue reliance on forward-looking statements.
- ❧ Cautionary note to United States Investors concerning estimates of Measured, Indicated and Inferred Resources: This presentation uses the terms “Measured”, “Indicated” and “Inferred” Resources. United States investors are advised that while such terms are recognized and required by Canadian regulations (under National Instrument 42-101 Standards of Disclosure for Mineral properties), the United States Securities and Exchange Commission does not recognize them. United States investors are cautioned not to assume that all or any part of Measured or Indicated Resources will ever be converted into Mineral Reserves.

- ✎ The information in this presentation that relates to Exploration Results and Mineral Resources is based on information compiled by Mr R. W. Mosig, who is a Fellow of the Australasian Institute of Mining and Metallurgy. Mr Mosig is a full-time employee and Managing Director of Platina Resources Limited. The Skaergaard Mineral Resource has been previously more fully reported in the Platina Resources Limited 2009 Annual Report.*
- ✎ Mr Mosig has sufficient experience which is relevant to the style of mineralisation and type of deposit under consideration and to the activity which he is undertaking to qualify as a Competent Person as defined in the 2004 Edition of the 'Australasian Code for Reporting of Exploration Results, Mineral Resources and Ore Reserves'. Mr Mosig consents to the inclusion in the report of the matters based on his information in the form and context in which it appears.*



“New Frontiers in Gold and PGM Exploration”

Thomas Abraham-James – Exploration Manager

Raw Materials Group 6th Annual Exploration & Mining Investment
Conference, Stockholm: 12-13 November 2009

