



## Chaketma Phosphate Project: Drilling and trenching results continue to exceed Scoping Study assumptions

ACN 139 225 771  
ABN 82 139 255 771

Level 4, 100 Albert Road  
South Melbourne VIC 3205

Phone: +61 (0)3 9692 7222  
Fax: +61 (0)3 9077 9233  
info@celamin.com

### Board of Directors

Andrew Thomson, Non-Exec  
Chairman

David Regan, Managing Director

Russell Luxford, Executive Director

Martin Broome, Non-Exec Director

Gary Scanlan, Non-Exec Director

### Company Secretary

Melanie Leydin

### Securities on Issue

CNL: 152,338,652 ordinary shares

CNLOA: 75,984,913 options expiring 28  
June 2013

CNLO: 25,358,026 options expiring 31  
March 2014

CNLCA: 14,887,796 partly paid shares

Celamin Holdings NL (ASX: CNL, "Celamin" or the "Company") is pleased to announce the results of recent drilling and trenching activity at the Chaketma Phosphate Project in Tunisia. Celamin and its local partner, Tunisian Mining Services SARL, have continued to advance the exploration and development programme at Chaketma in line with the objectives set out in the Scoping Study completed by Direct Mining Services in August this year. Recent activity, including eight diamond core drill holes and 13 trenches, include the following results:

### Drilling results:

**CHDD-2012-47**      **42.00m @ 21.52% P<sub>2</sub>O<sub>5</sub>**

**CHDD-2012-48**      **22.50m @ 20.83% P<sub>2</sub>O<sub>5</sub>**

**CHDD-2012-45**      **17.80m @ 20.22% P<sub>2</sub>O<sub>5</sub>**

**CHDD-2012-41**      **15.10m @ 20.82% P<sub>2</sub>O<sub>5</sub>**

**CHDD-2012-43**      **13.00m @ 20.92% P<sub>2</sub>O<sub>5</sub>**

### Trenching results:

**CHT079**              **17.00m @ 20.33% P<sub>2</sub>O<sub>5</sub>**

**CHT063**              **16.00m @ 20.05% P<sub>2</sub>O<sub>5</sub>**

**CHT077**              **12.00m @ 21.83% P<sub>2</sub>O<sub>5</sub>**

**CHT082**              **12.00m @ 21.69% P<sub>2</sub>O<sub>5</sub>**

The latest results, with highlighted intersections outlined above, indicate that the Chaketma Project hosts phosphate mineralisation at a greater average phosphate seam thickness than that assumed in the Scoping Study. The results also indicate strip ratios to be lower than anticipated.

**Celamin Managing Director, David Regan, commented:**

**"Exploration activities at the Chaketma Project continue to deliver results that are exceeding both our internal expectations and those outlined by the project's Scoping Study. As such, our confidence in the Tunisian phosphate project is growing."**

At the time of this announcement, Celamin and TMS have, in total, completed 61 diamond drill holes for 5,333m at the Chaketma Project.

The laboratory assay results for the latest eight diamond drill holes, from the Kef El Louz and Sid Ali Ben Oum Ezzine prospects, are outlined below in Table 1 and Figure 1 along with laboratory assay results from 13 trenches from the Kef El Louz, Sidi Ali Ben Ezzine and Gassat Ezarbat prospects (see Table 2 and Figure 2, 3 and 4).

## Drilling results

**Table 1: Recent Drilling Intercepts from Kef El Louz Prospect**

Drill Hole	From (m)	To (m)	Intercept (m)	P <sub>2</sub> O <sub>5</sub> %	CaO%	Prospect
CHDD-2012-041	58.50	73.6	15.10	20.82	40.72	Sidi Ali Ben Oum Ezzine
CHDD-2012-042	24.70	26.70	2.00	10.28	45.03	Kef EL Louz
CHDD-2012-043	31.20	44.20	13.00	20.92	40.61	Kef EL Louz
CHDD-2012-044	40.50	52.50	12.00	19.77	40.28	Kef EL Louz
CHDD-2012-045	38.30	56.10	17.80	20.22	41.53	Kef EL Louz
CHDD-2012-046	42.60	44.15	1.55	14.35	38.10	Sidi Ali Ben Oum Ezzine
CHDD-2012-047	52.30	94.30	42.00	21.52	40.83	Kef EL Louz
CHDD-2012-048	31.70	54.20	22.50	20.83	41.93	Sidi Ali Ben Oum Ezzine

*Note: Intercepts lengths are measured down hole.*

The phosphate intercepts in the eight diamond drill holes at the Kef El Louz and Sidi Ali Ben Oum Ezzine prospects, range from 12.00m to 42.00m, at down hole depths of 31.20m to 58.50m (excluding holes 42 and 46, which intercepted fault zones). The apparent waste-to-ore ratios in these holes range from less than 2:1 to approximately 4:1 (excluding holes 42 and 46).

**The results of drilling at Kef El Louz continues to show good results (hole 47 with 42.00m @ 21.52% P<sub>2</sub>O<sub>5</sub>, hole 45 with 17.80m @ 20.22% P<sub>2</sub>O<sub>5</sub>, hole 43 with 13.00m @ 20.92% P<sub>2</sub>O<sub>5</sub>, and hole 44 with 12.00m @ 19.77% P<sub>2</sub>O<sub>5</sub>).**

**The results from Sidi Ali Ben Oum Ezzine are encouraging, with results of up to 22.50m of phosphate at an average grade of 20.83% P<sub>2</sub>O<sub>5</sub> (Hole 48).** Note: The Sidi Ali Ben Oum Ezzine prospect was not included in the Maiden Inferred JORC Resource announced on 9 November 2012.

## Trenching results

Celamin has also received assay results for a further 13 trenches of channel sampling (Table 2) at the Chaketma Project (Figures 2, 3 and 4) – nine are from Kef El Louz prospect, 3 are from the Sidi Ali Ben Oum Ezzine prospect and one from the Gassat Ezarbat. Trenching and channel sampling at these locations has been an ongoing activity.

**Table 2: Recent Trenching Results**

<b>Trench ID</b>	<b>Prospect</b>	<b>Length (m)</b>	<b>P2O5%</b>	<b>CaO%</b>
CHT060	Kef El Louz	4.00	15.24	35.14
CHT061	Kef El Louz	1.00	15.66	36.07
CHT062	Kef El Agab	7.00	23.60	46.05
CHT063	Kef El Agab	16.00	20.05	43.61
CHT064	Kef El Louz	1.00	11.24	38.54
CHT066	Kef El Louz	4.00	18.43	39.73
CHT067	Kef El Louz	1.00	12.32	37.60
CHT069	Kef El Louz	3.00	13.68	38.47
CHT070	Sidi Ali Ben Oum Ezzine	2.00	15.56	40.67
CHT071	Sidi Ali Ben Oum Ezzine	20.00	15.20	35.22
CHT072	Kef El Louz	11.00	24.01	44.79
CHT079	Sidi Ali Ben Oum Ezzine	17.00	20.33	43.59
CHT080	Gassat Ezarbat	8.00	17.34	37.85
CHT081	Kef El Louz	5.00	19.11	41.98
CHT082	Kef El Louz	12.00	21.69	42.30

### **Sampling and assaying procedures**

Core from the eight diamond drill holes was half split and sampled after geological logging, generally at one metre intervals or to lithological boundaries – this was also the procedure followed for trench sampling. The samples were crushed and riffle split, then 500gm splits were sent to Al Amri Laboratory in Jeddah, Saudi Arabia, for determination of major oxides by X-Ray Fluorescence (XRF) methods on fused “buttons.”

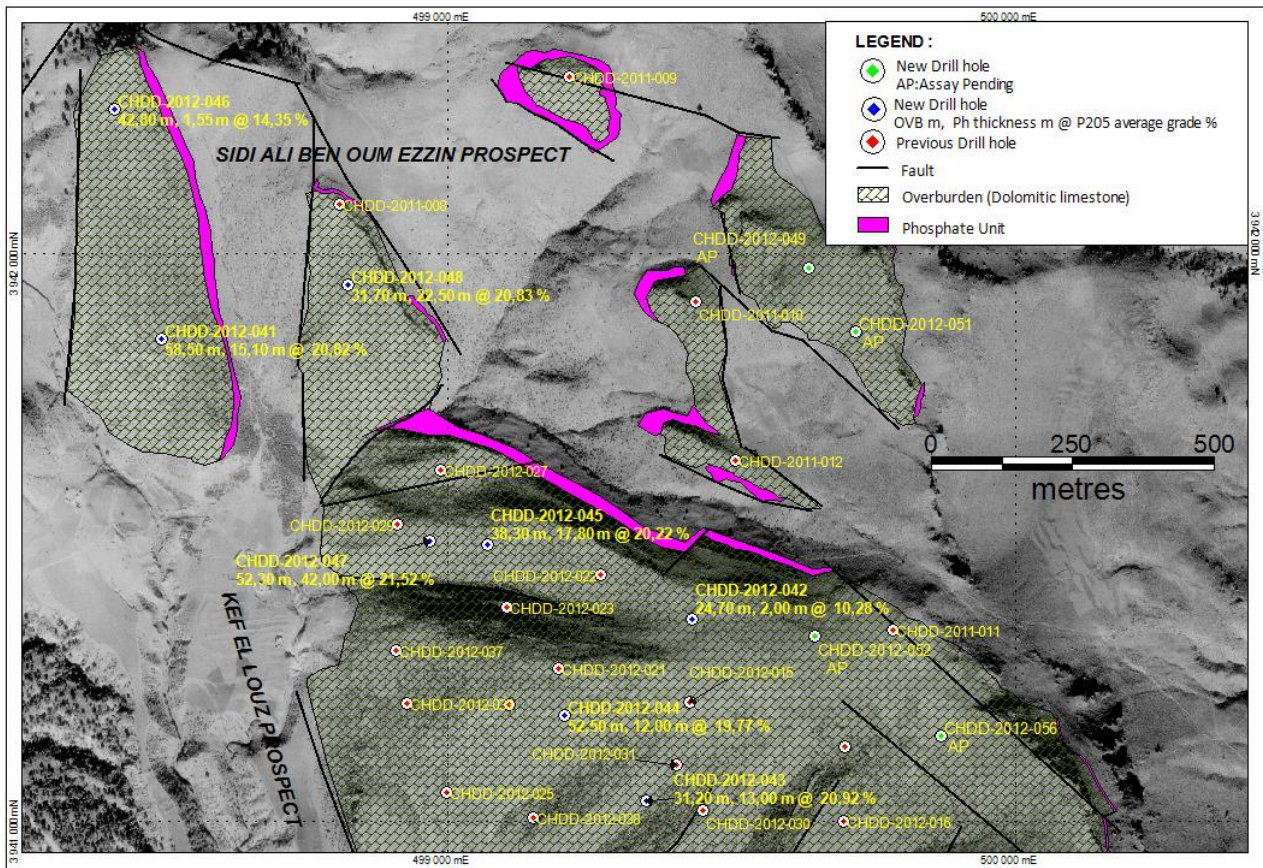


Figure 1: Drilling Results from Kef El Loz North and Sidi Ali Ben Oum Ezzine prospect

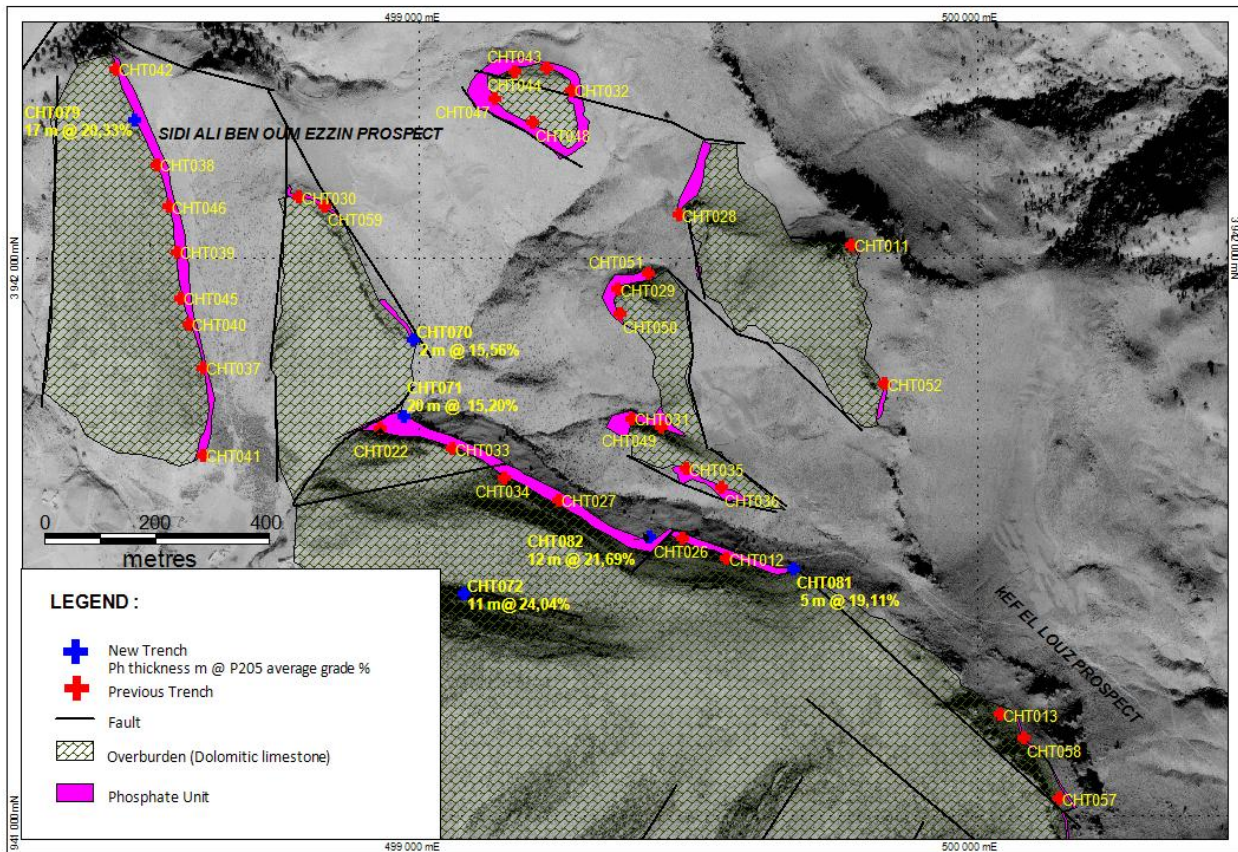


Figure 2: Trenching Results for Sidi Ali Ben Oum Ezzine and Kef El Louz North Prospects

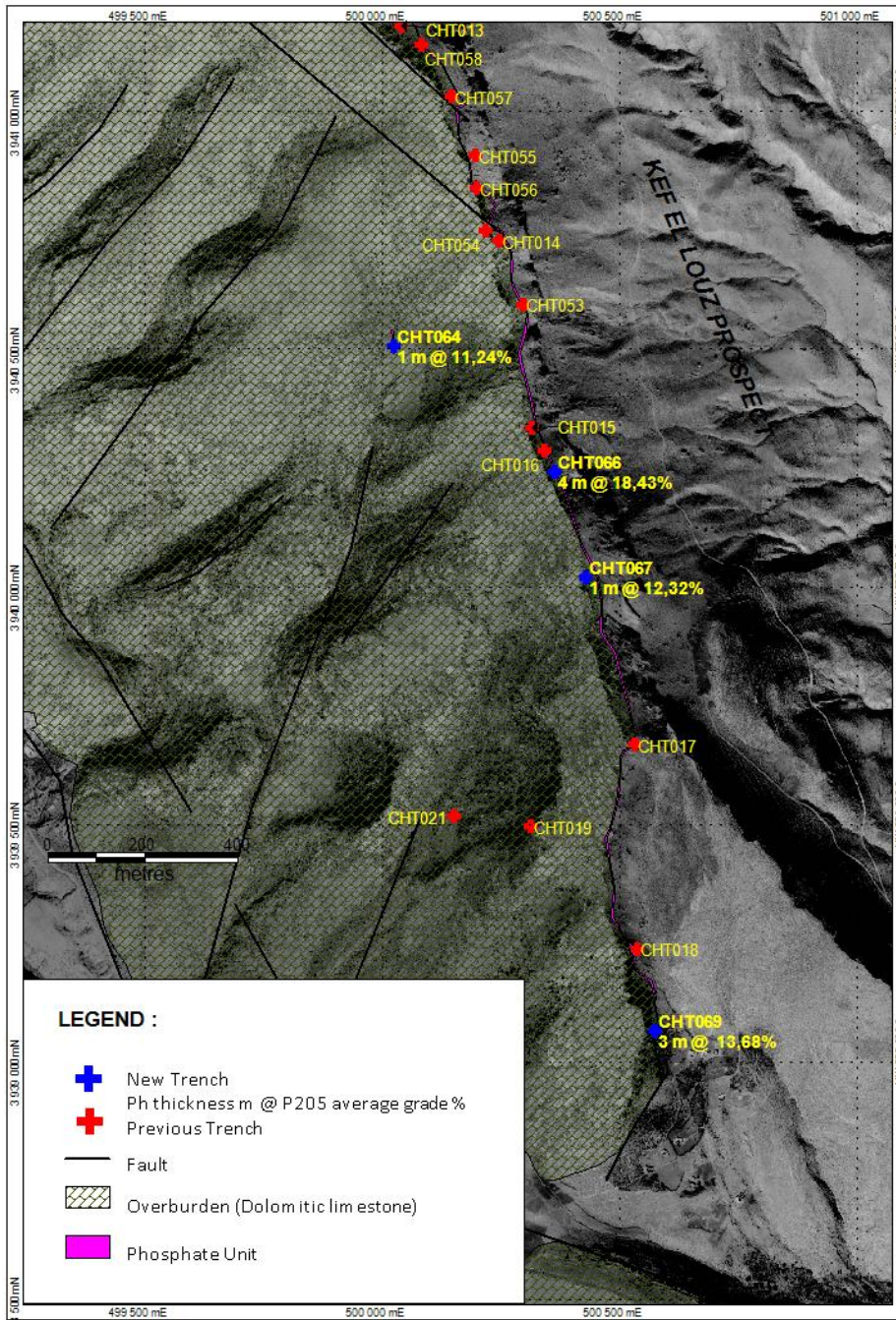


Figure 3: Trenching Results Kef El Louz North and South Prospects

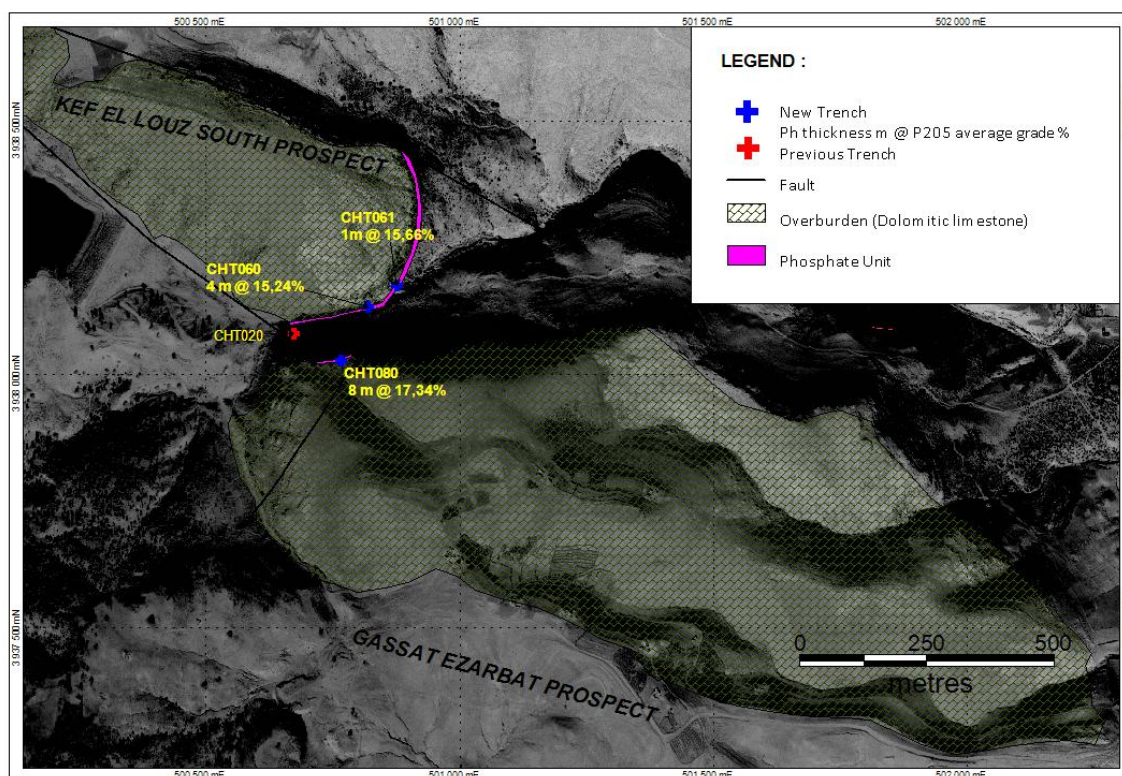


Figure 4 Trenching Results for Kef El Louz South Prospect

## Background

Celamin and its local partner Tunisian Mining Services SARL (“TMS”) are continuing to advance the Chaketma Phosphate Project in Tunisia. The Chaketma Project Scoping Study (“Scoping Study”), announced on 14 August 2012, delivered positive results, including robust project economics.

The Scoping Study emphasised the need to identify areas of high-grade phosphate with good metallurgical properties at a low strip ratio. To this end, drilling activity at the Chaketma Project continued to focus on the northern end of the Kef El Louz prospect. A Maiden JORC Inferred Resource was announced on 9 November 2012. Trenching is also being conducted at the other prospects at Chaketma, ahead of future drilling campaigns.

The Kef El Louz prospect is the largest of the prospects within the Chaketma exploration permit. It is approximately six kilometres from north to south, and covering more than three square kilometres. Mapping, trenching and drilling at the north-western corner of the Kef El Louz prospect confirms that this area has the potential to meet grade, as well as metallurgical and strip ratio criteria.

The Chaketma exploration program consists of mapping, drilling and channel sampling of Chaketma exploration permit – this includes the Gassa Kebira, Sidi Ali Ben Oum Ezzine, Kef EL Louz and Douar Ouled Hamouda prospects.

## COMPETENT PERSONS STATEMENT

*Information in this report that relates to Exploration Results from Chaketma is based on information compiled by Ms Sue Border, who is a member of the Australasian Institute of Mining and Metallurgy. Ms Border is a consultant geologist and has sufficient experience relevant to the style of mineralisation and types of deposit under consideration and to the activities reported on to qualify as a Competent Person as defined in the 2004 Edition of the “Australian Code for Reporting of Mineral Resources and Ore Reserves. Ms Border consents to the inclusion in this report of the matters based on information in the format and context in which it appears.*