



**Chrysalis**  
RESOURCES  
LIMITED



Presentation  
ASX: CYS  
November 2013



- 5 quality Copper and Copper/Gold licences covering >3000km<sup>2</sup> in Zambia
- Experienced exploration team (4 geos: 73 years combined exploration/mining)
- JORC compliant resource at Wangolo (18.6 Mt @ 0.52% Cu)
- Advanced exploration at Shikila (15km along strike of FQM - Kansanshi Mine)
- Promising first pass geochem at Kabwima, Bulala Hills and Mwongo (25km from Blackthorn's Kitumba resource - 187 Mt @ 1.14% Cu)
- Tight capital structure - top 100 shareholders own 90%
- Strong financial support by 2 major shareholders - Tiger Resources (17.77%) and EBH Chinese consortium (25%)
- 1080km<sup>2</sup> of iron, gold and base metal gold exploration licences in Australia



## Board of Directors

- > Dr Neale Fong, MBBS Dip CS MTS MBA FAICD FACHSM (Hon), Executive Chairman
- > Mr Grant Kidner, B.Bus CPA, Executive Director
- > Mr Jian Hua Sang, B.Sc M.Sc, Executive Director
- > Mr Adrian Paul, B.Bus, Non-Executive Director
- > Mr Trevor Benson, B.Sc, Non-Executive Director
- > Mr Michael Griffiths, B.Sc, DipEd, FAusIMM, GAICD, Non-Executive Director

## Key Personnel

- > Ms Melanie Cotterell, B.Com CA ACIS, Company Secretary
- > Jeremy Hawksworth, B.Sc (Hons), B.Com, Exploration Manager
- > Mr Leigh Ryan, B.Sc MAIG, Consultant Geologist
- > John S Noakes, ARSM, BSc Hons, FAusIMM, FGS
- > Christopher Simasiku, Company Secretary, in country Sedgwick Resources Limited



Shikila Exploration Camp

## 6 Month Share Price Chart



## Capital Structure

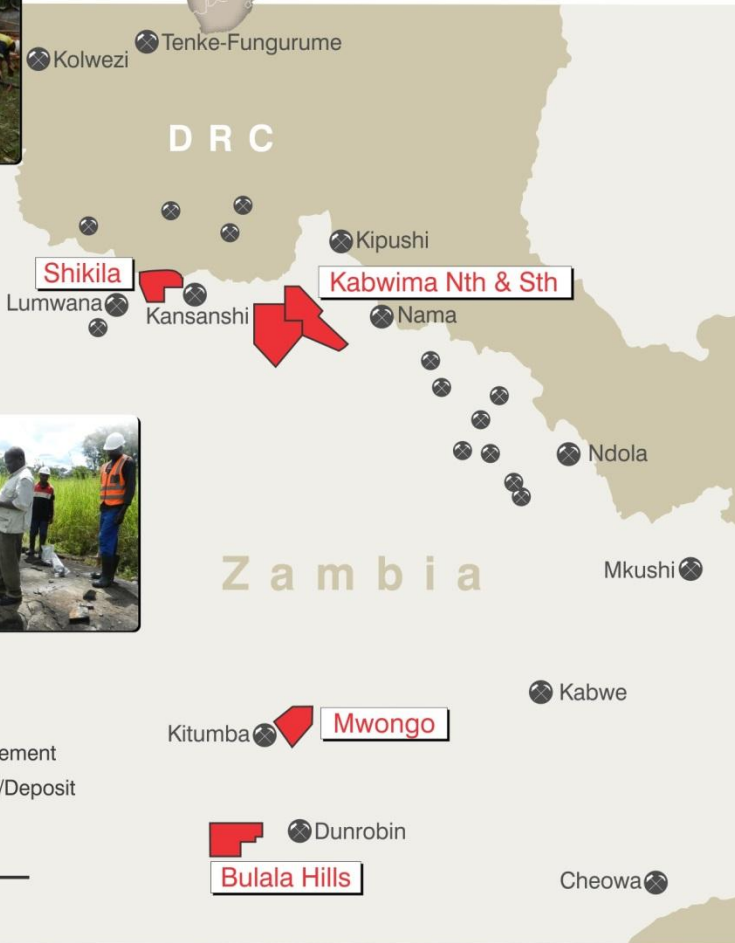
Listed	27 May 2008
Share Price	\$0.050 as at 1 <sup>st</sup> November 2013
Market Capital	\$11.02 million
Issued Shares	220,474,881
<b>Majority Shareholders</b>	
Directors	14.79%
Tiger Resources Ltd (ASX:TGS)	17.77%
EBH	25.00%
Top 20	71.14%
Top 100	91.07%



## AFRICA



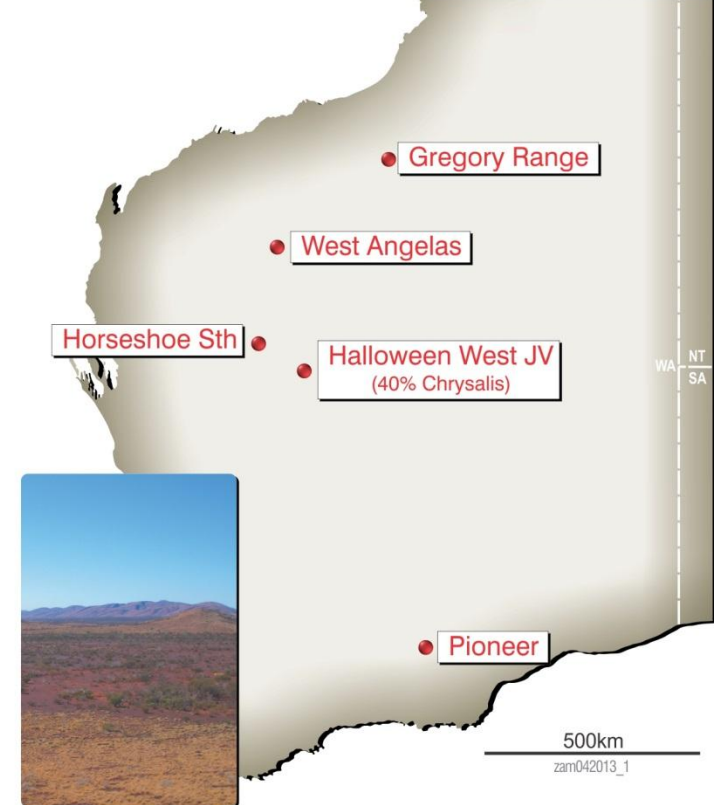
## ZAMBIA



## WA



## AUSTRALIA





- Zambia is the world's 7th largest producer of copper  
(ref. Zambia Mining Sector Profile, June 2013 – Zambia Development Agency)
- Zambian GDP 7.7% in 2012 up from 5.7% in 2008  
(ref. Global Finance Website)
- Stable democratic government
- Long history of copper and cobalt production
- Good infrastructure

## Republic of Zambia



Flag

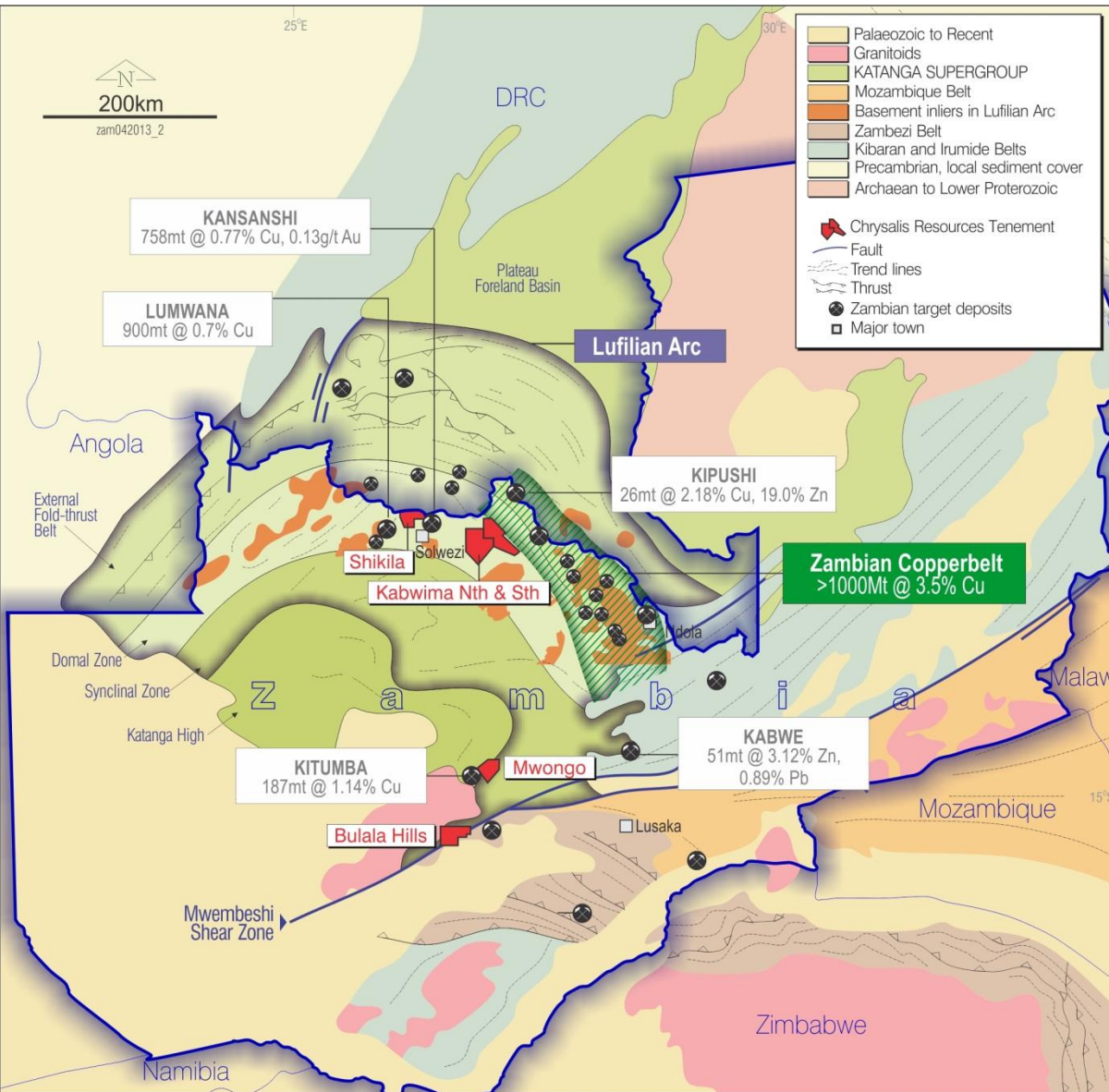


Coat of arms

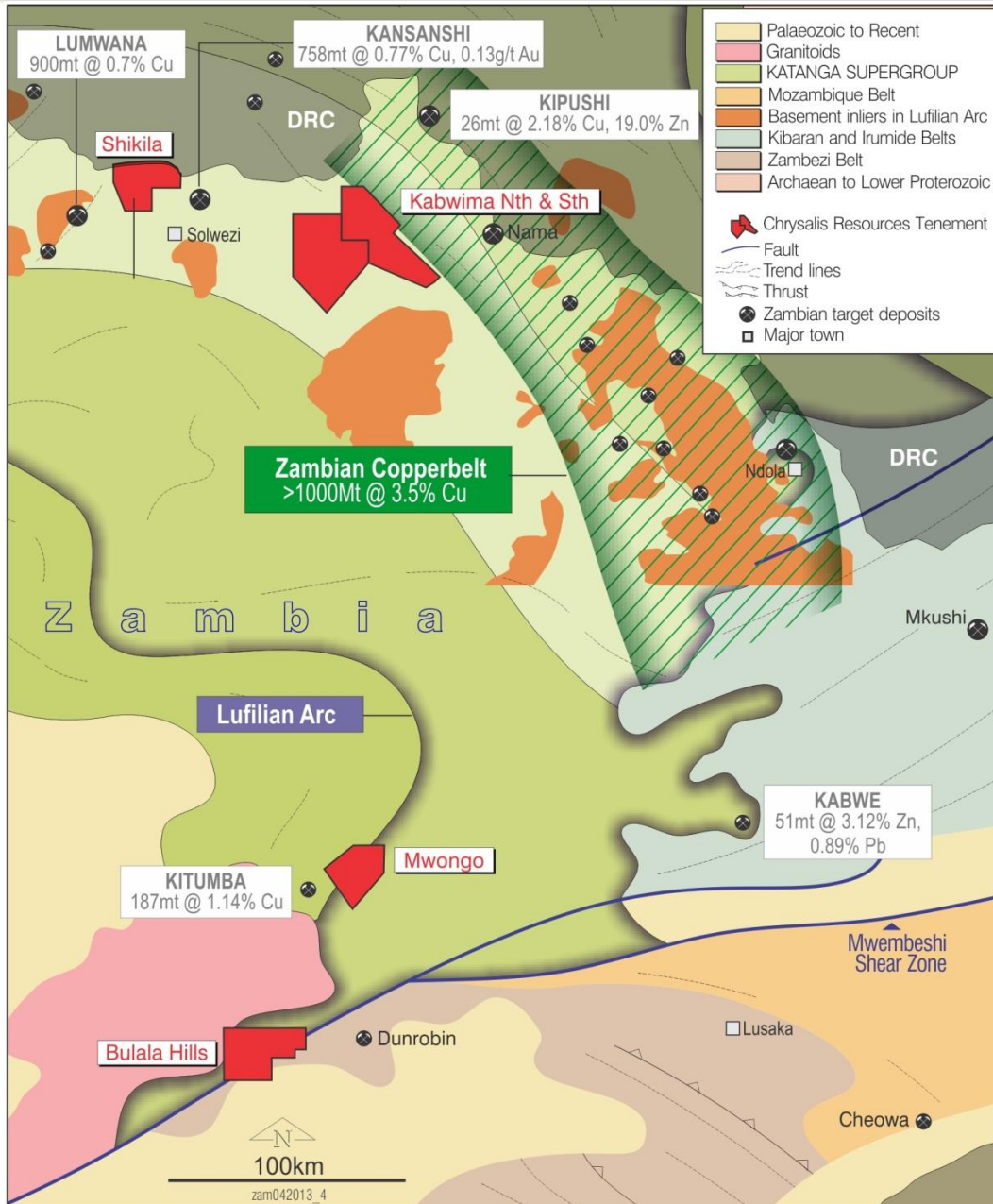
**Motto:**  
"One Zambia, One Nation"

**Anthem:**  
*Stand and Sing of Zambia, Proud and Free*





- Chrysalis owns 5 highly prospective large scale prospecting licences in Zambia, covering 3,023 km<sup>2</sup>.
- Northern licences adjacent to Barrick Gold Corporation's (TSX: ABX) Lumwana Mine and First Quantum Mineral's (TSX: FM) Kansanshi copper mines.
- Southern licences including Mwongo, are adjacent to Blackthorn Resources Ltd.'s (ASX: BTR) Kitumba discovery.
- All licences 100% owned by Sedgwick Resources (99.9% owned subsidiary of Chrysalis Resources Limited) with extension to 2016 approved.



## Major Mineral Deposits near Chrysalis Licences

**LUMWANA (Equinox Minerals , Oct 2012)**  
900mt @ 0.7% Cu

**KANSANSHI (First Quantum, Jan 2013)**  
758mt @ 0.77% Cu, 0.13 g/t Au

**KIPUSHI (Mbendi Profile)**  
26mt @ 2.18% Cu, 19.0% Zn

**NAMA (Caledonian Mining, April 2007)**  
122mt @ 0.047% Co, 0.043% Cu

**KABWE (Berkley, Nov 2012 – non JORC)**  
51mt @ 3.12% Zn, 0.89% Pb

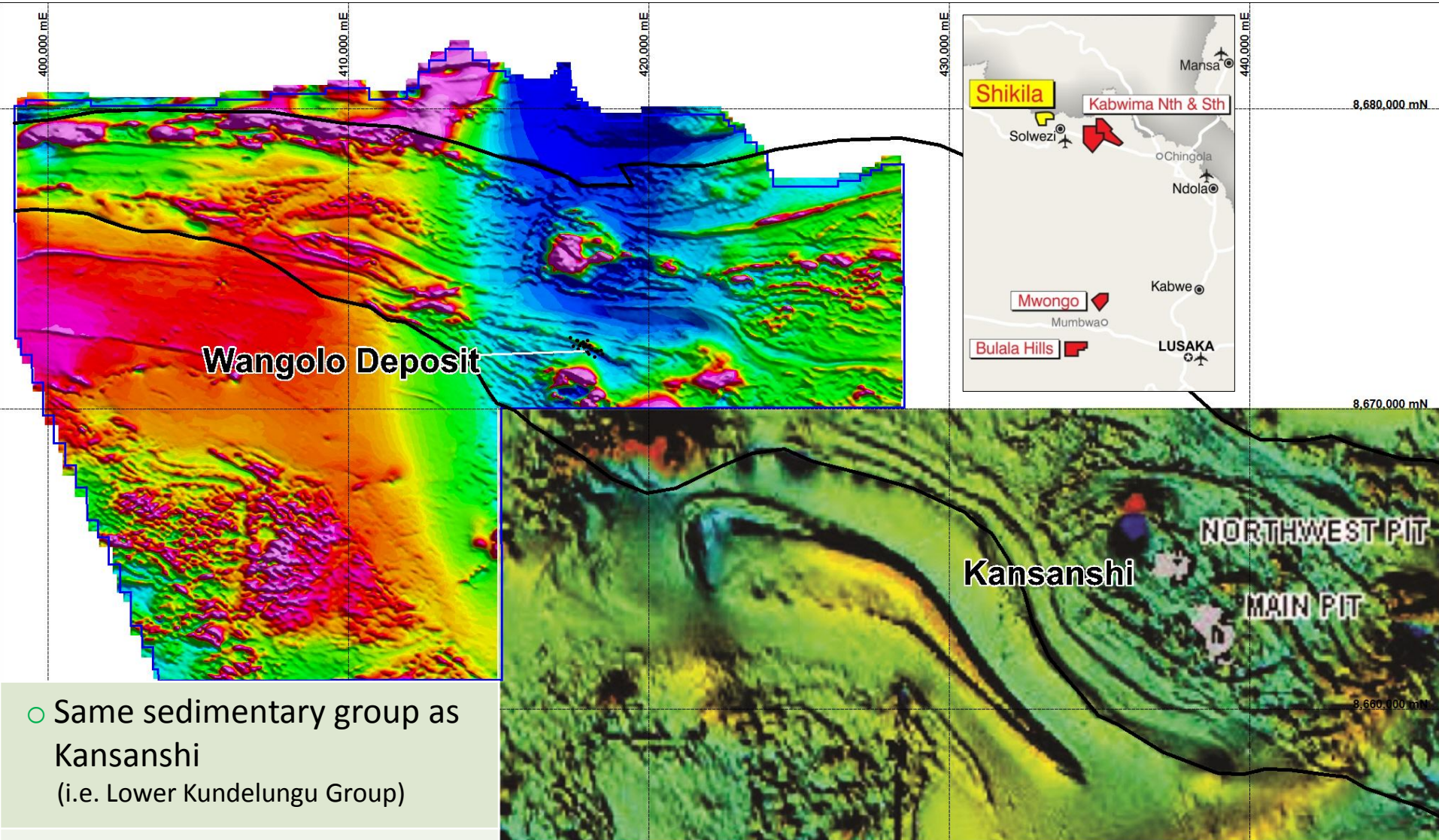
**KITUMBA (Blackthorn Resources, 2012)**  
258mt @ 0.6% Cu incl. 187 Mt @ 1.14% Cu

**DUNROBIN (Luri Gold, Nov 2012)**  
2.8mt @ 2.15 g/t Au

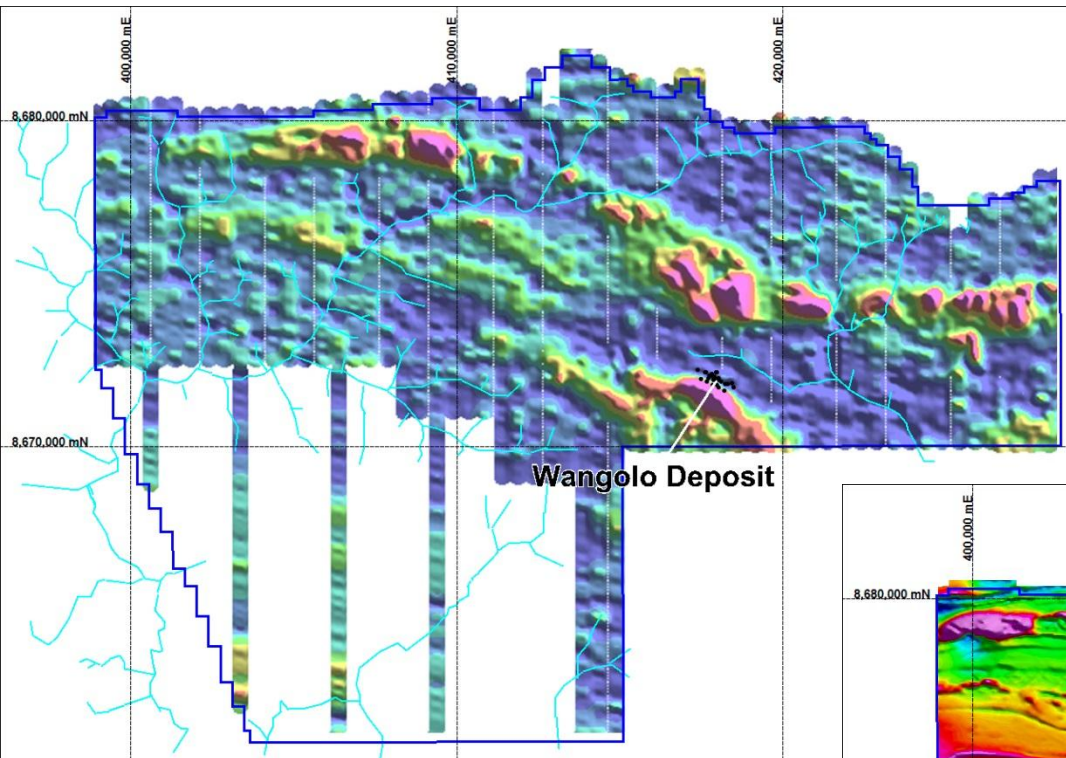
**MKUSHI (African Eagle, Feb 2008)**  
10.7mt @ 1.11% Cu

**CHEOWA (Zambezi Resources, July 2008)**  
3.5mt @ 1.10% Cu, 0.23 g/t Au

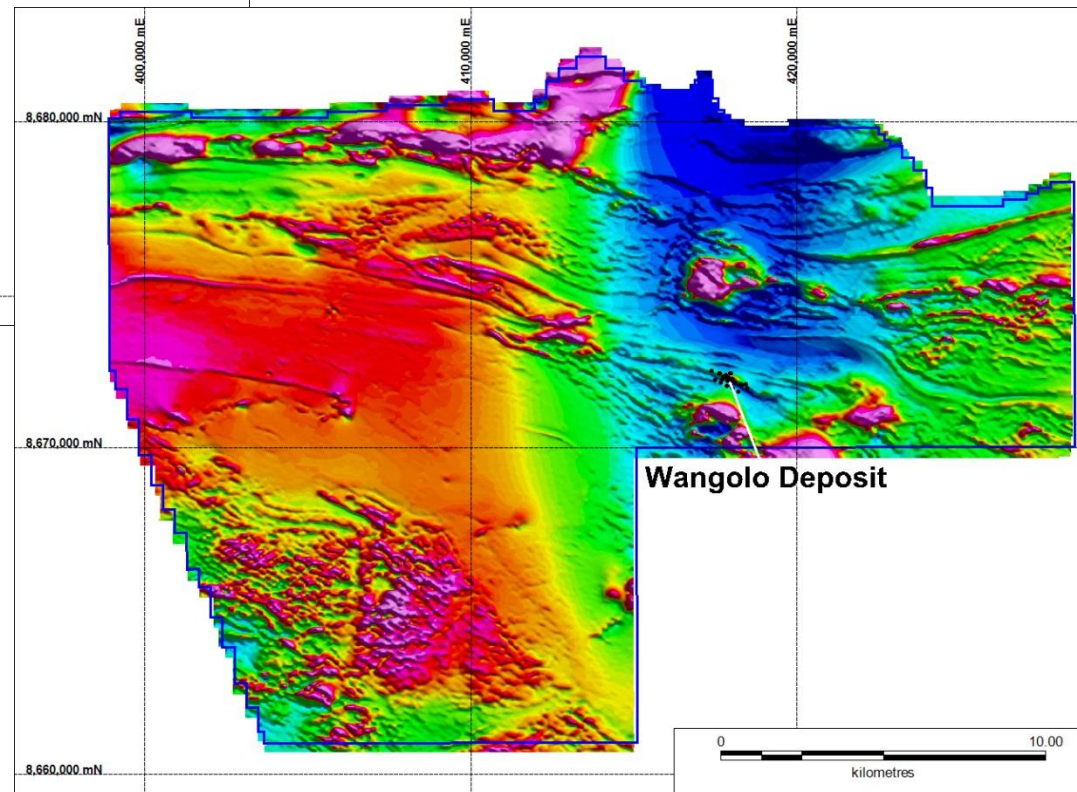
**MUNALI (Albidon, Sept 2007)**  
9.1mt @ 1.23% Ni

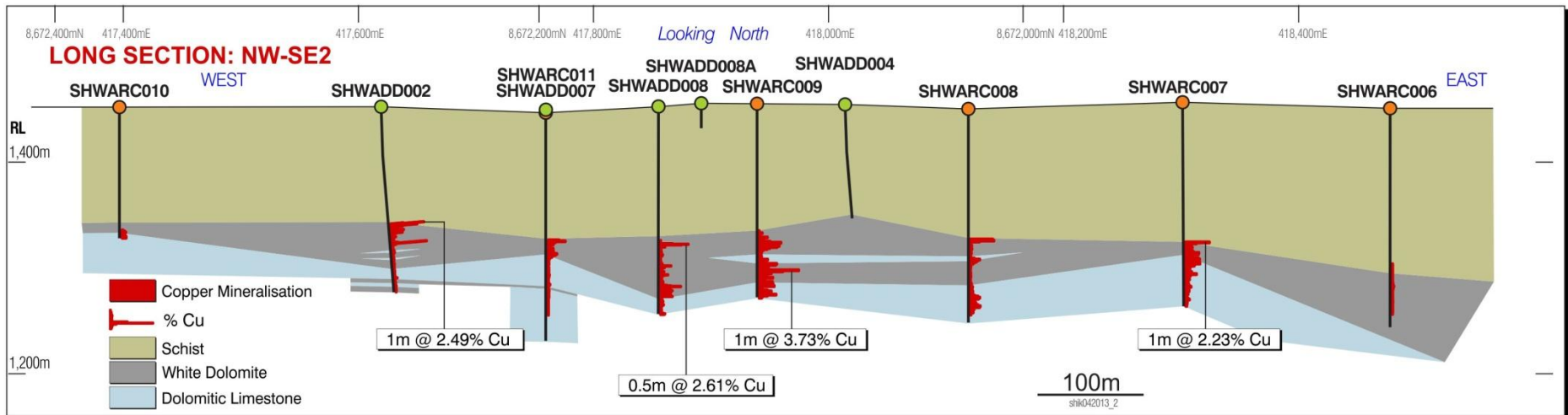
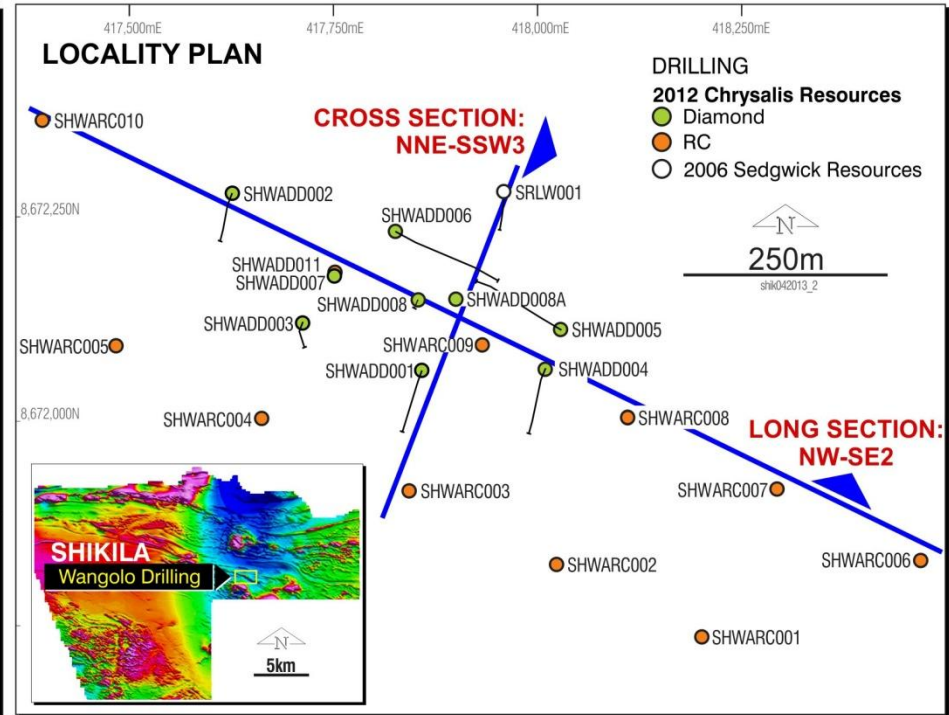
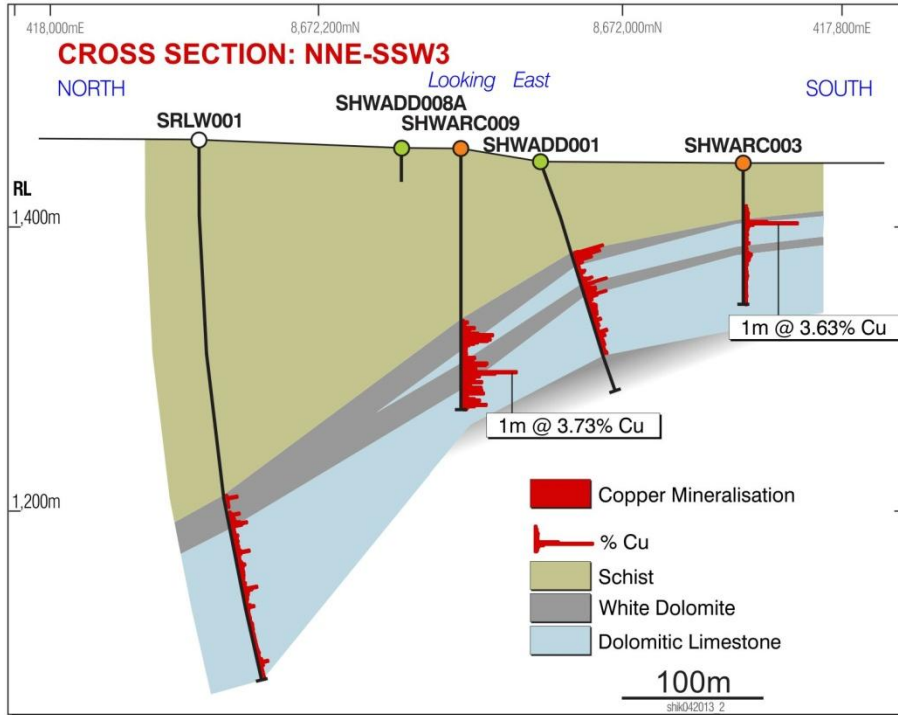


- Same sedimentary group as Kansanshi (i.e. Lower Kundelungu Group)
- Similar magnetic signatures to Kansanshi (i.e. intrusion related “domes”)



- Cu-in-soil anomalism over intrusives and along northern contact of Kundelungu shales.
- Breaks in Cu-in-soil anomalism related to drainage.
- RC Drilling of 7 Cu-in-soil soil anomalies underway.







## Wangolo Significant Intersections

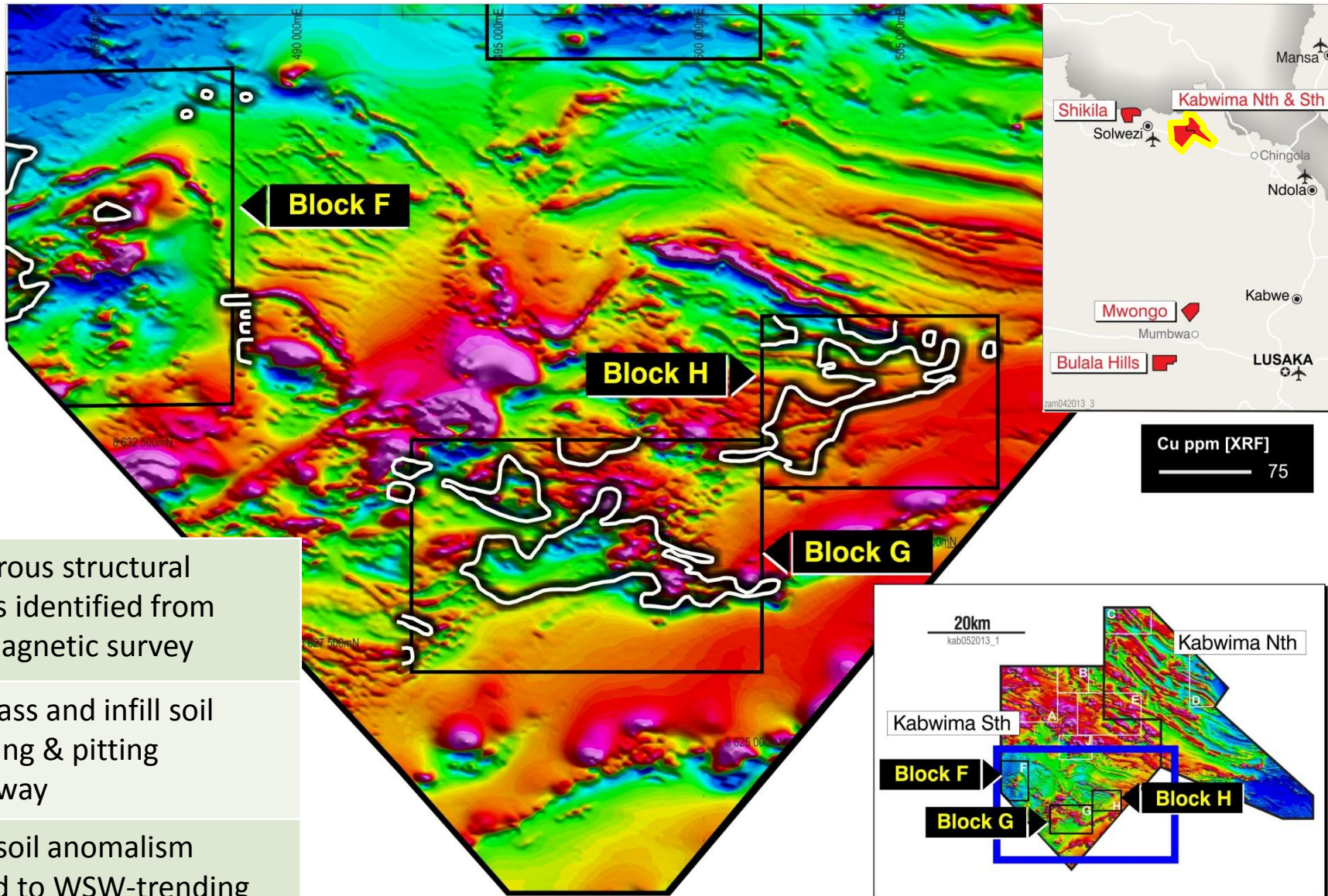
Wangolo JORC compliant resource: 18.6 Mt @ 0.52% Cu (0.3% Cu cut-off)

### Reverse Circulation Drilling – Copper Assays above 0.2%

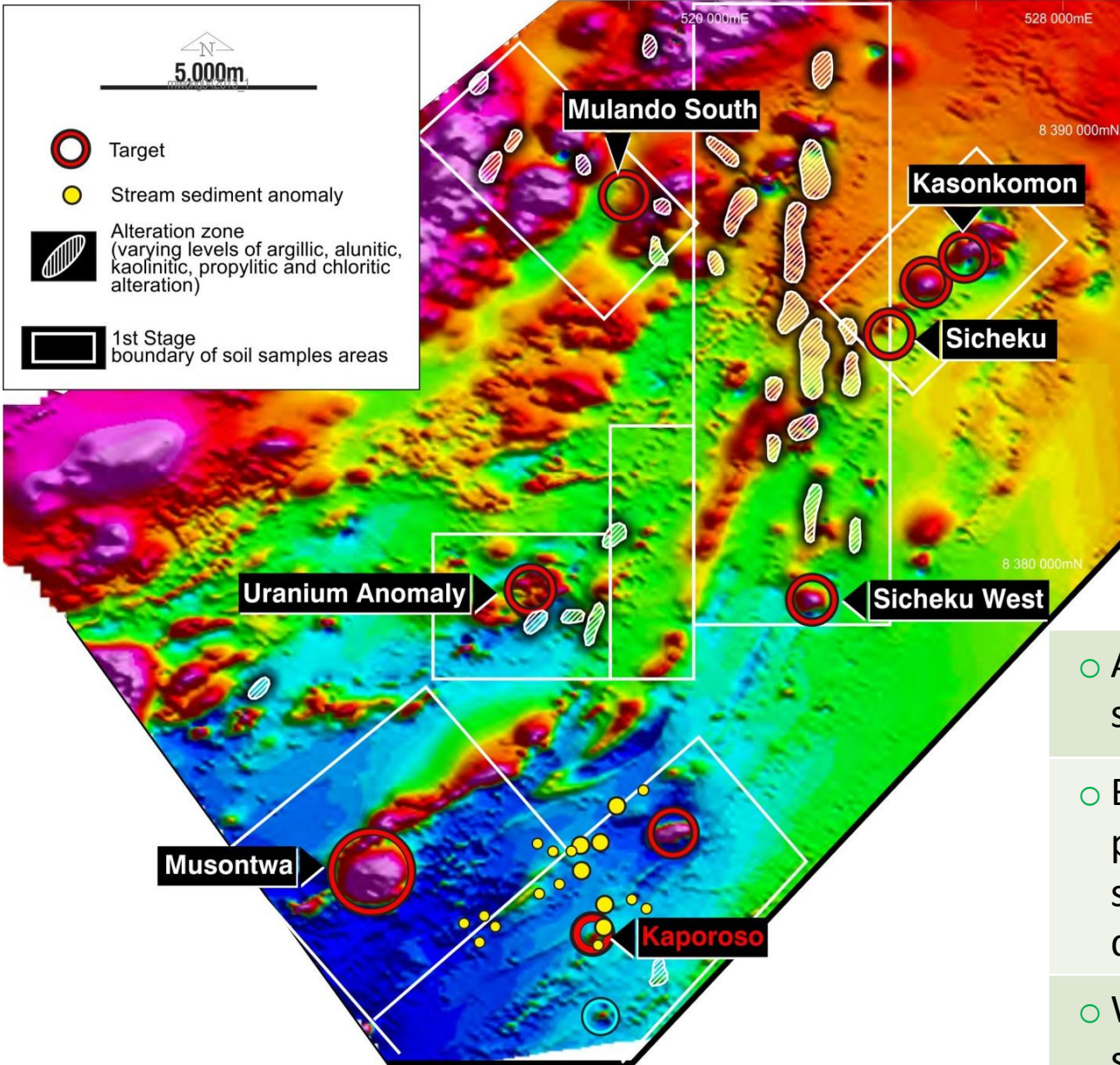
Hole ID	From	Intersection
SHWARC003	41	4.0m @ 1.46% Cu
SHWARC007	132	3.0m @ 1.24% Cu
SHWARC007	139	31.0m @ 0.66% Cu
SHWARC008	123	3.0m @ 1.71% Cu
SHWARC009	129	13.0m @ 0.95% Cu
SHWARC009	147	28.0m @ 0.95% Cu
SHWARC011	120	3.0m @ 1.08% Cu

### Diamond Drilling – Copper Assays above 0.2%

Hole ID	From	Intersection
SHWADD001	68.0	4.0m @ 1.21% Cu
SHWADD002	117.0	4.5m @ 1.39% Cu
SHWADD005	193.9	3.0m @ 1.21% Cu
SHWADD005	197.5	13.0m @ 0.68% Cu
SHWADD005	212.0	14.5m @ 0.71% Cu
SHWADD005	226.9	9.1m @ 0.53% Cu
SHWADD005	242.5	3.0m @ 1.1% Cu
SHWADD006	213.0	1.5m @ 1.1% Cu
SHWADD006	231.3	5.3m @ 1.06% Cu
SHWADD006	241.0	8.8m @ 0.74% Cu
SHWADD006	253.8	10.5m @ 0.65% Cu
SHWADD008	130.0	2.0m @ 1.52% Cu
SHWADD008	169.5	11.0m @ 0.71% Cu



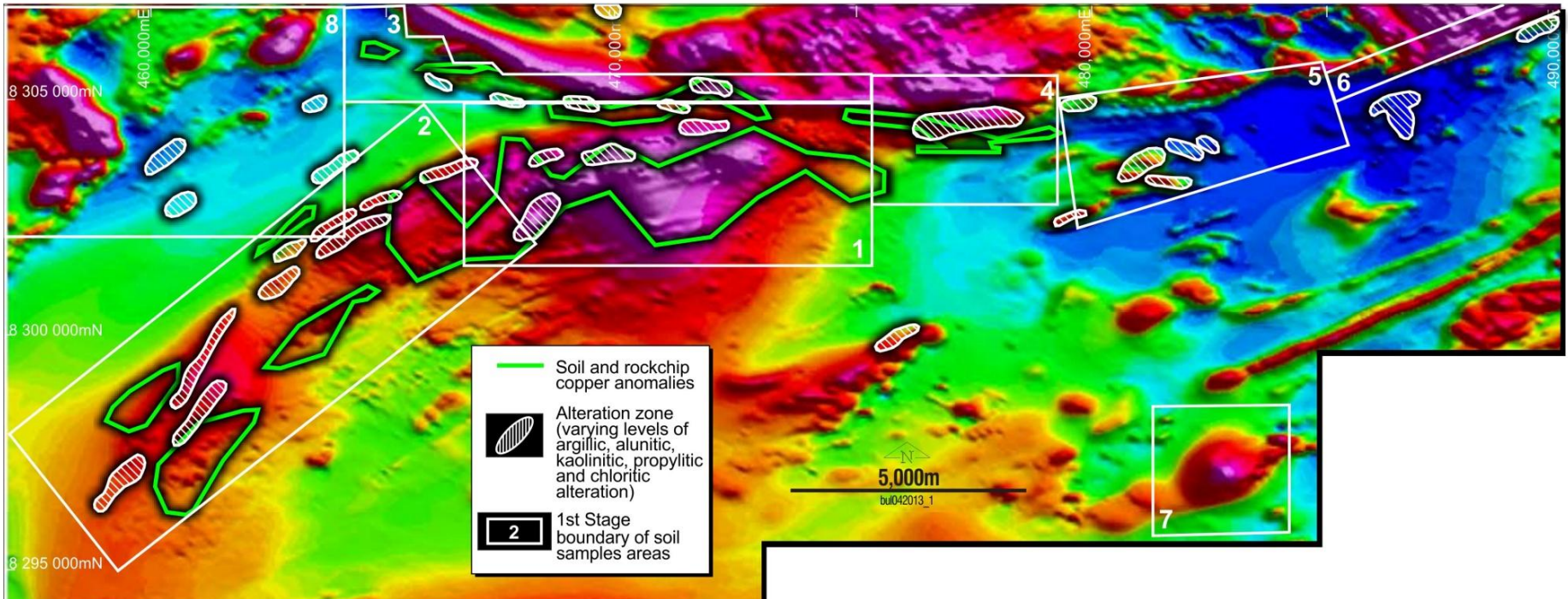
- Numerous structural targets identified from aeromagnetic survey
- First pass and infill soil sampling & pitting underway
- Cu-in-soil anomalism related to WSW-trending structures (Blocks G & H).



- Anomalous Cu in stream sediments (-> 2,000ppm Cu).
- Bullseye magnetic anomalies possible late stage intrusions similar to Blackthorns Kitumba deposit.
- Wide spaced 1st pass soil sampling underway.



- Anomalous Cu-Co-Pb-Zn-Ni identified from wide spaced soil and rock chip sampling.
- Rock float of 3% Cu located in 2005.
- Volcanic sequence associated with the Hook granite and Mwembishi structural dislocation.
- Infill soil and rock chip sampling planned.





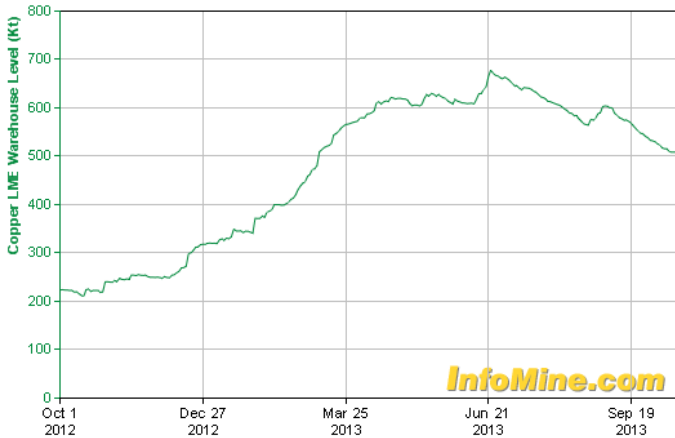
Exploration Timeline	2013	2014			
	Q4	Q1	Q2	Q3	Q4
<b>Shikila</b>					
RC Drilling of regional soil anomalies (Kansanishi and Wangolo Style)					
Wangolo Resource Extension Drilling		★			
Prospect RAB or RC Drilling (Kansanishi Style)				★	
Prospect Resource Drilling				★	
<b>Kabwima</b>					
Regional 1st pass soil sampling					
Infill Soil sampling					
Soil Anomaly RAB or RC Drilling					
Prospect RC Drilling					
<b>Mwongo</b>					
Regional 1st pass soil sampling					
Infill Soil sampling					
Auger Drilling and pitting					
Prospect RAB or RC Drilling (Kitumba Style)				★	
Prospect Resource Drilling				★	
<b>Bulala Hills</b>					
Regional 1st pass soil sampling					
Infill Soil sampling					
Soil Anomaly RC Drilling					
Prospect RC Drilling					



**Copper Price**  
3.25 USD/lb  
17 Oct '13

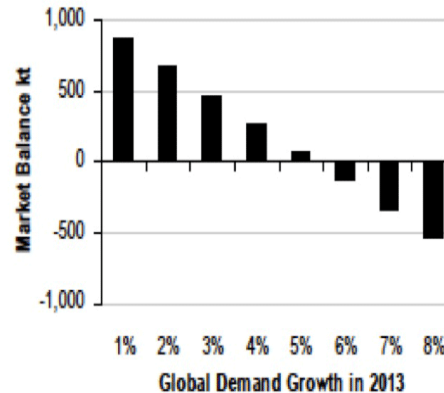


**Copper LME Warehouse Level**  
508.58 Kt  
17 Oct '13



- Copper has maintained elevated prices over a long period
- Warehouse levels are currently declining
- 2013 demand growth forecast = 4.3%
- 5% growth required to maintain market balance

Demand growth will need to exceed 5% to drive the market into deficit



**Copper Price**  
3.25 USD/lb  
17 Oct '13



**Copper LME Warehouse Level**  
508.58 Kt  
17 Oct '13



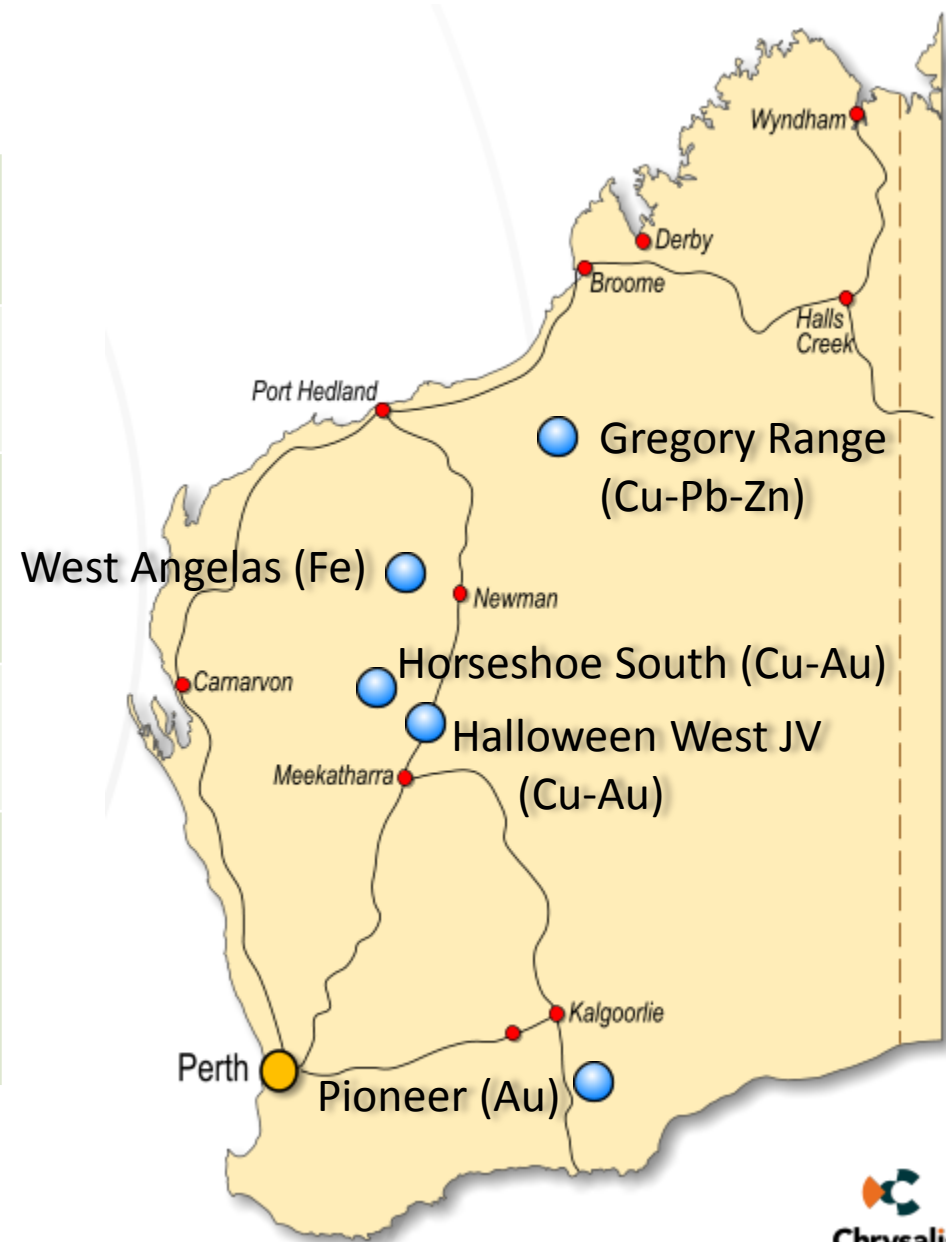


- Shikila medical clinic refurbishment, solar power, solar vaccination fridge, water pump repairs.
- Shikila primary school support.
- ZACS bridge repairs.
- Grid power connection to Kamilambo Secondary School and medical clinic.
- Kamilambo medical clinic motorbike.





- 1079km<sup>2</sup> of Fe, Cu-Au and base metal exploration ground in Aust.
- Halloween West JV: 20km west of DeGrussa Mine (CYS 40%)
- West Angelas: up to 28m @ 55.5% Fe in RC drilling – JV negotiations underway
- Pioneer: up to 21m @ 4.80g/t Au from 49m at Spongelite prospect
- Gregory Range: 933km<sup>2</sup> recently granted with excellent potential for Nifty (Cu) and Baton (Cu-Pb-Zn) styles of mineralisation





This document has been prepared by Chrysalis Resources Ltd (“Chrysalis” or “the Company”) to provide an update of the Company to investors and potential new shareholders. This presentation should be read in conjunction with other public announcements and reports (including financial reports and disclosure documents) released by Chrysalis. Any statements, opinions, projections, forecasts or other material contained in this document do not constitute any commitments, representations or warranties by Chrysalis and associated entities or its directors, agents and employees. Except as required by law, and only to the extent so required, directors, agents and employees of Chrysalis shall in no way be liable to any person or body for any loss, claim, demand, damages, costs or expenses of whatsoever nature arising in any way out of, or in connection with, the information contained in the document.

This document includes certain statements, opinions, projections, forecasts and other material, which reflect various assumptions. The assumptions may or may not prove to be correct. Recipients of the document must make their own independent investigations, consideration and evaluation of the opportunity to invest in the Company. By accepting this document the recipient agrees that if it proceeds further with its investigations, consideration or evaluation of the opportunity to invest in the Company it shall make and rely solely upon its own investigations and inquiries and will not in any way rely upon the document.

### **Competent Person’s Statements**

*The information in this report that relates to Exploration Results, Mineral Resources or Ore Reserves is based on information compiled by Mr Leigh Ryan, a consultant geologist with Spatial Data Services engaged by Chrysalis Resources Limited, who is a Member of the Australian Institute of Geoscientists (MAIG). Mr Ryan has sufficient experience relevant to the style of mineralisation and type of deposit under consideration and to the activity he is undertaking to qualify as a Competent Person as defined in the 2004 Edition of the “Australasian Code for Reporting of Exploration Results, Mineral Resources and Ore Reserves”. Mr Ryan consents to the inclusion in the report of the matters based on information in the form and context in which it appears.*