

Monto Minerals

Herberton Tin Project Baal Gammon Copper Project

ASX: MOO



January 2012

Disclaimer

This presentation is provided on the basis that neither the Company nor its representatives make any warranty (express or implied) as to the accuracy, reliability, relevance or completeness of the material contained in the Presentation and nothing contained in the Presentation is, or may be relied upon as a promise, representation or warranty, whether as to the past or the future. The Company hereby excludes all warranties that can be excluded by law. The Presentation contains material which is predictive in nature and may be affected by inaccurate assumptions or by known and unknown risks and uncertainties, and may differ materially from results ultimately achieved.

The Presentation contains "forward-looking statements". All statements other than those of historical facts included in the Presentation are forward-looking statements including estimates of resources. However, forward-looking statements are subject to risks, uncertainties and other factors, which could cause actual results to differ materially from future results expressed, projected or implied by such forward-looking statements. Such risks include, but are not limited to, tin and other metals price volatility, currency fluctuations, increased production costs and variances in ore grade ore recovery rates from those assumed in mining plans, as well as political and operational risks and governmental regulation and judicial outcomes. The Company does not undertake any obligation to release publicly any revisions to any "forward-looking statement" to reflect events or circumstances after the date of the Presentation, or to reflect the occurrence of unanticipated events, except as may be required under applicable securities laws. All persons should consider seeking appropriate professional advice in reviewing the Presentation and all other information with respect to the Company and evaluating the business, financial performance and operations of the Company. Neither the provision of the Presentation nor any information contained in the Presentation or subsequently communicated to any person in connection with the Presentation is, or should be taken as, constituting the giving of investment advice to any person.

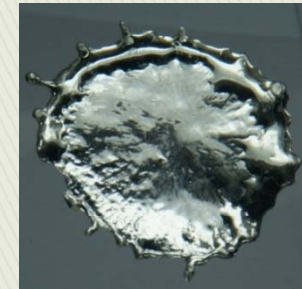
Exploration Target Size and Target Mineralisation described in this presentation is conceptual in nature and should not be construed as a JORC compliant Mineral Resource. Target mineralisation is based on projections of established grade ranges over appropriate widths and strike lengths having regard for geological considerations including mineralisation style, specific gravity and expected mineralisation continuity as determined by qualified geological assessment. There is insufficient information to establish whether further exploration will result in the determination of a Mineral Resource.

Highlights



Tin

- Herberton Tin Field – proven coarse-grained free-milling tin producing area first consolidated in 2005
- Range of high grade targets – drilling underway in early 2012
- Tin in tight supply with forecast price rises
- \$3.2M + NSR cashflow (and \$3M* in KZL shares) to fund tin exploration
- Potential tin processing options through Kagara



Baal Gammon

- Operated by Kagara with an NSR payable on all metals – trucking of high grade ore commenced Nov 2011
- Realisation of tin credits would significantly increase NSR
- Lodgement of contiguous MLA – Baal Gammon upside
- Investigating exploration options and JV terms with Kagara



Capital Structure - Summary

Summary

| | |
|-------------------------------------|---------------------------------|
| Shares on Issue: | 1,307,440,555 |
| Options | 10,182,273 |
| Exercisable at 0.5c before 31/12/13 | |
| Options (held by Evolution) | 150,000,000* |
| Exercisable at 3c before 30/6/14 | |
| Market Cap at 2c: | \$26M |
| Cash at Bank: | \$3.2M (plus \$3M* KZL and NSR) |
| Debt: | \$0 |

Board of Directors

Gary Steinepreis – Chairman

James Allchurch – Executive Director

Patrick Burke – Non-executive Director

Major Shareholders

Evolution Mining ~ 23%+

Board of Directors ~ 14%

*Escrowed until 5 May 2012

Tin Supply: Shrinking

- Demand outstrips supply (2010 deficit of 13kt)
- We continue to forecast a 2012 supply deficit of 10kt. And at present it is hard to see how another deficit can be avoided in 2013 (BNP Paribas, Dec 2011)
- Unlike other metals, there are very few new significant tin mines nearing production – costs increasing
- Production from the three major tin producers – Indonesia, China and Peru steadily declining
- ‘Conflict Minerals’ Legislation in the United States enacted in late 2011

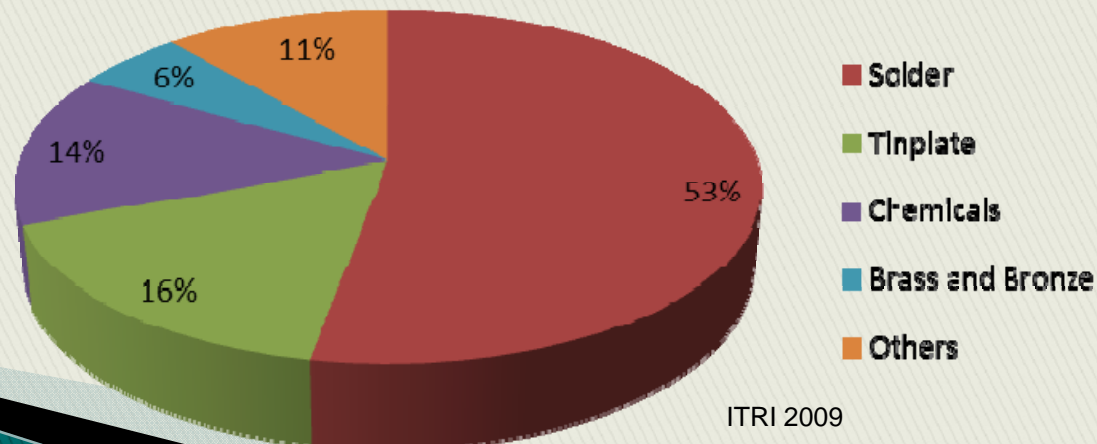


Tin Use

- Annual Consumption of around 360,000t/pa
- New and growing demand for tin from the electronics industry; primarily lead-free tin solders. Relatively price insensitive
- New markets appearing such as lithium ion batteries, stainless steel, solar cells, animal healthcare and fuel catalysts

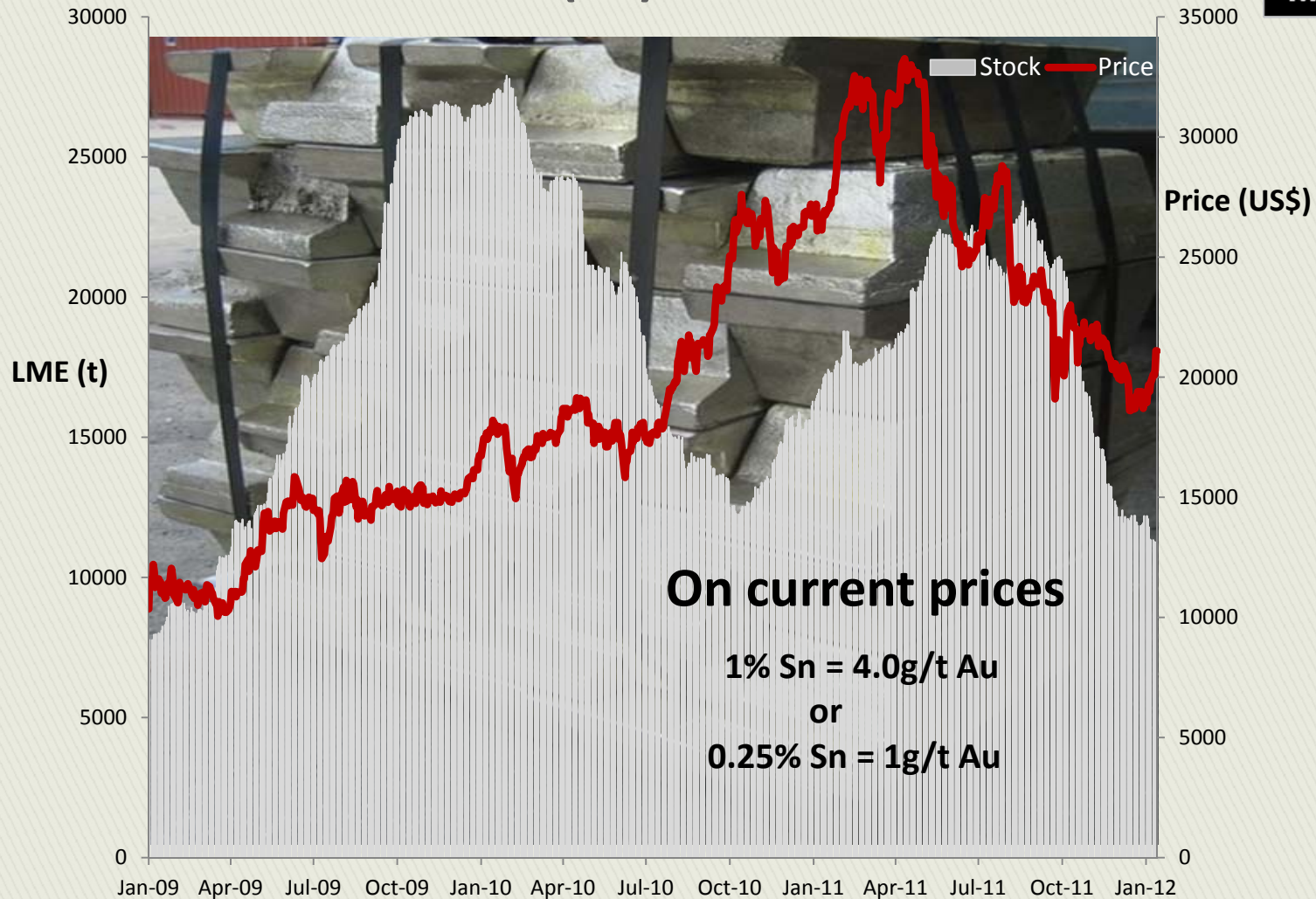


Tin Consumption



ITRI 2009

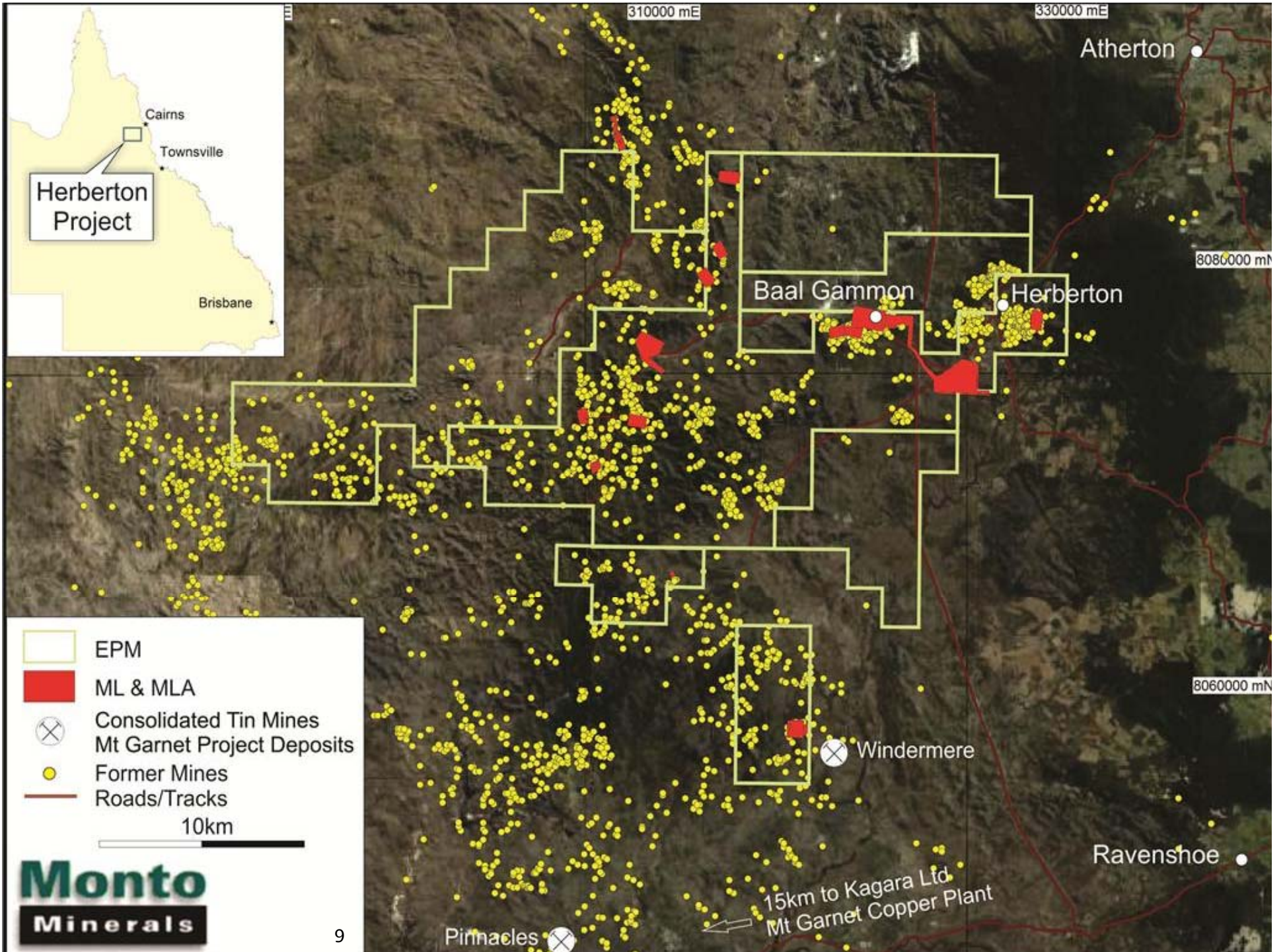
Tin (Sn) Price



- Current price of US\$21,090/t (LME.com/tin.asp)
- We still believe tin has among the best, if not the best, price prospects for 2012 (BNP Paribas Dec 2011)

Herberton Tin Project

- Herberton Tin Field has produced over 76,300t of Sn metal – over 2,000 mines.
- 2005 was the FIRST time the area was consolidated into broad EPMs
- Vulcan Deposit mined to 425m with a grade over 6% Sn
- Targeting high grade breccia pipes and structurally controlled cassiterite mineralisation + broader high tonnage greisen hosted mineralisation
- Potential for large high grade lenses and porphyry systems (polymetallic)
- Extensive digital database including air and ground based magnetics, IP and geochemical surveys, rock chip sampling and drilling
- At least 10 immediate drill targets – **drilling to commence April 2012**

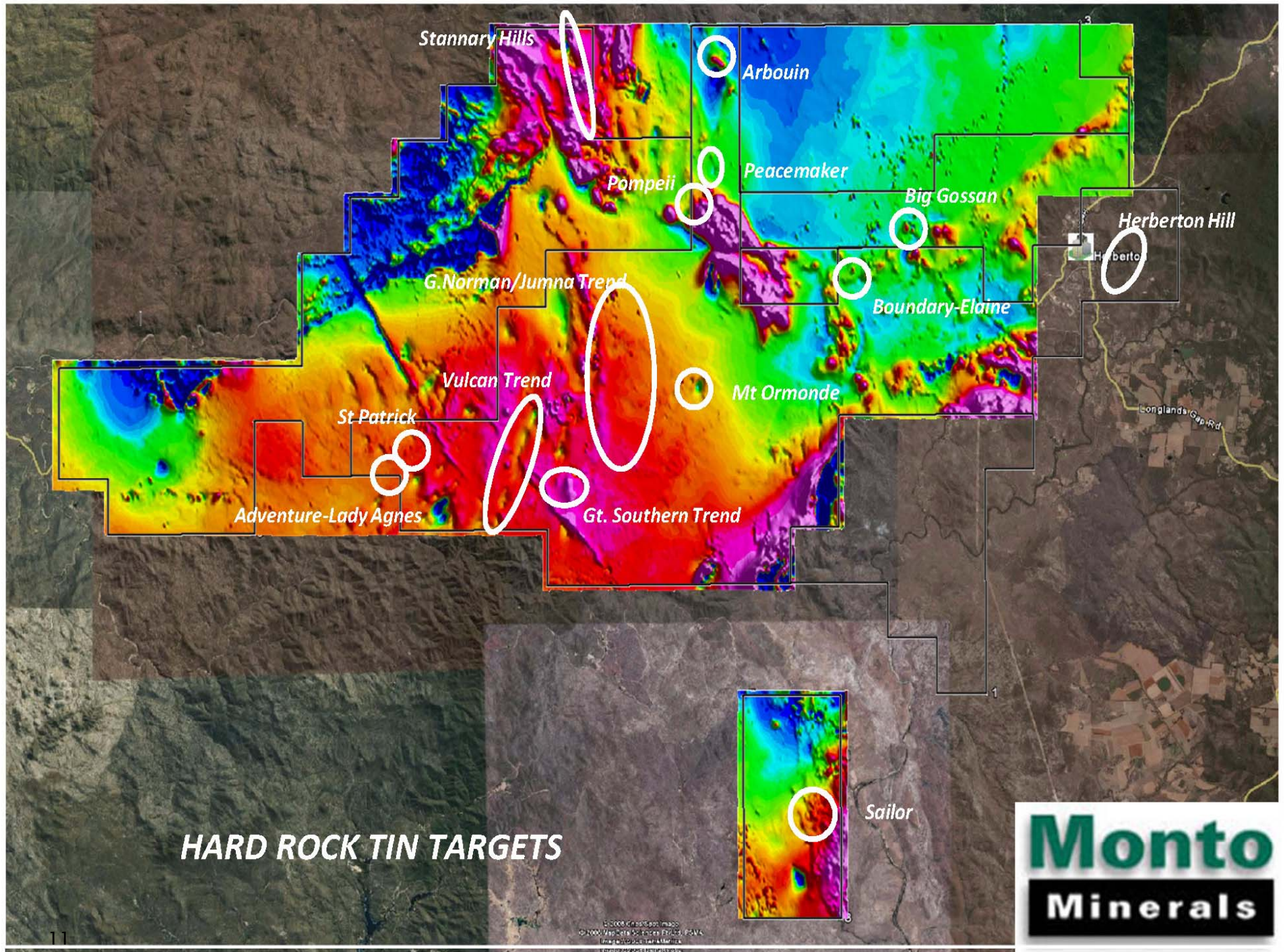


Exciting Tin Targets

- **Arbouin** mined until 1987. Huge near mine potential with unmined drill intersections such as 26.4m @2.78% Sn
- Good potential for extensions and halo mineralisation at the **Great Southern, Governor Norman** and **Kitchener** groups of mines. Most workings open at depth with no mining of halo material
- **Sailor** - large tonnage low grade deposits (open pit) identified. Target mineralisation established
- More high grade breccia pipes and structurally controlled mineralisation likely to exist
- Potential blending with large tonnage low grade material

| Sample ID | Prospect | Tin (%) |
|-----------|-----------|---------|
| RX0054 | Arbouin | 1.91 |
| RX0090 | Arbouin | 2.15 |
| RX0131 | Kitchener | 1.27 |
| RX0134 | Kitchener | 3.22 |
| RX0153 | Kitchener | 1.67 |

Rock Chip Results – November 2011



HARD ROCK TIN TARGETS

Monto
Minerals

© 2008 Crossroads Image
© 2000 MapData AG, Inc. All Rights Reserved. PAMA
Image provided by AMERICA
Image provided by MapData AG

Tin Potential

- Strategic Tin Alliance with Kagara currently investigating tin processing options at the Mt Garnet plant – 15km SW of the Herberton project
- Tin is the primary focus for Monto – drilling April 2012
- Southern licence immediately adjacent to Consolidated Tin's Mt Garnet Tin Project (Windermere Deposit). Total Resource of this project is 7.3Mt @ 0.6% Sn
- Importantly, Monto's tin targets are not skarn hosted; no magnetite associated and none of the accompanying metallurgical complexities
- Potential alluvial deposits – no modern work completed





Baal Gammon - Kagara Strategic Alliance

- Agreement signed with Kagara for the rights to mine Monto's Baal Gammon deposit for the following consideration:
 - initial capital payment of 9.37M Kagara shares – current value \$3M
 - 2.5% NSR payable on all metals for the first 550,000t of ore processed
 - 2% NSR payable on all metals over 550,000t of ore processed
- Baal Gammon currently in production (~250kt/pa) – cashflow from NSR
- Monto and Kagara well advanced in investigating tin processing options at Mt Garnet for the Baal Gammon ore and Herberton Tin Project
- Monto and Kagara to form joint venture for the exploration by Kagara of base metals (excluding tin) across Monto's entire Herberton tenement holding

Baal Gammon Resources

Global Resource – 0.2% Cu cut-off grade

| JORC Category | Tonnes | Cu (%) | Ag (g/t) | Sn (%) | In (g/t) |
|------------------------|------------------|------------|-----------|------------|-----------|
| Inferred Resources | 30,636 | 0.6 | 18 | 0.1 | 63 |
| Indicated Resources | 2,769,385 | 1.0 | 40 | 0.2 | 38 |
| Total Resources | 2,800,021 | 1.0 | 40 | 0.2 | 39 |

| Grade Cu Eq+ (%) | |
|------------------|--------------|
| Cu + Ag | Cu + Ag + Sn |
| 1.5 | 2.0 |

Includes a high grade zone currently being mined:

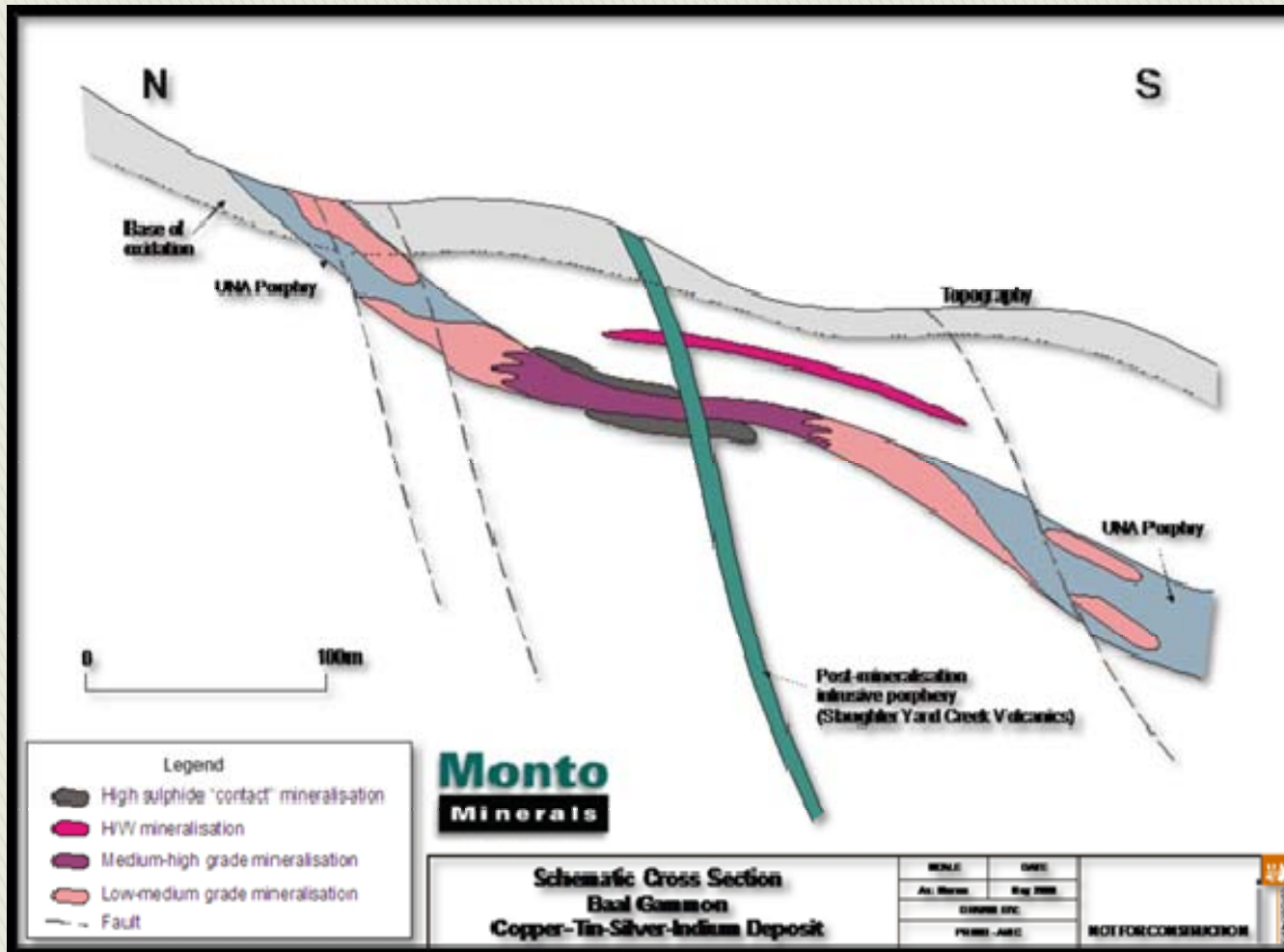
High Grade Zone Resource

| JORC Category | Tonnes | Cu (%) | Ag (g/t) | Sn (%) | In (g/t) |
|------------------------|----------------|------------|-----------|------------|-----------|
| Inferred Resources | 3,622 | 2.7 | 94 | 0.4 | 146 |
| Indicated Resources | 825,629 | 2.5 | 96 | 0.4 | 96 |
| Total Resources | 829,251 | 2.5 | 96 | 0.4 | 96 |

| Grade Cu Eq+ (%) | |
|------------------|--------------|
| Cu + Ag | Cu + Ag + Sn |
| 3.6 | 4.8 |

Material mined to date and known underground workings have been subtracted from the figures above

Baal Gammon Deposit



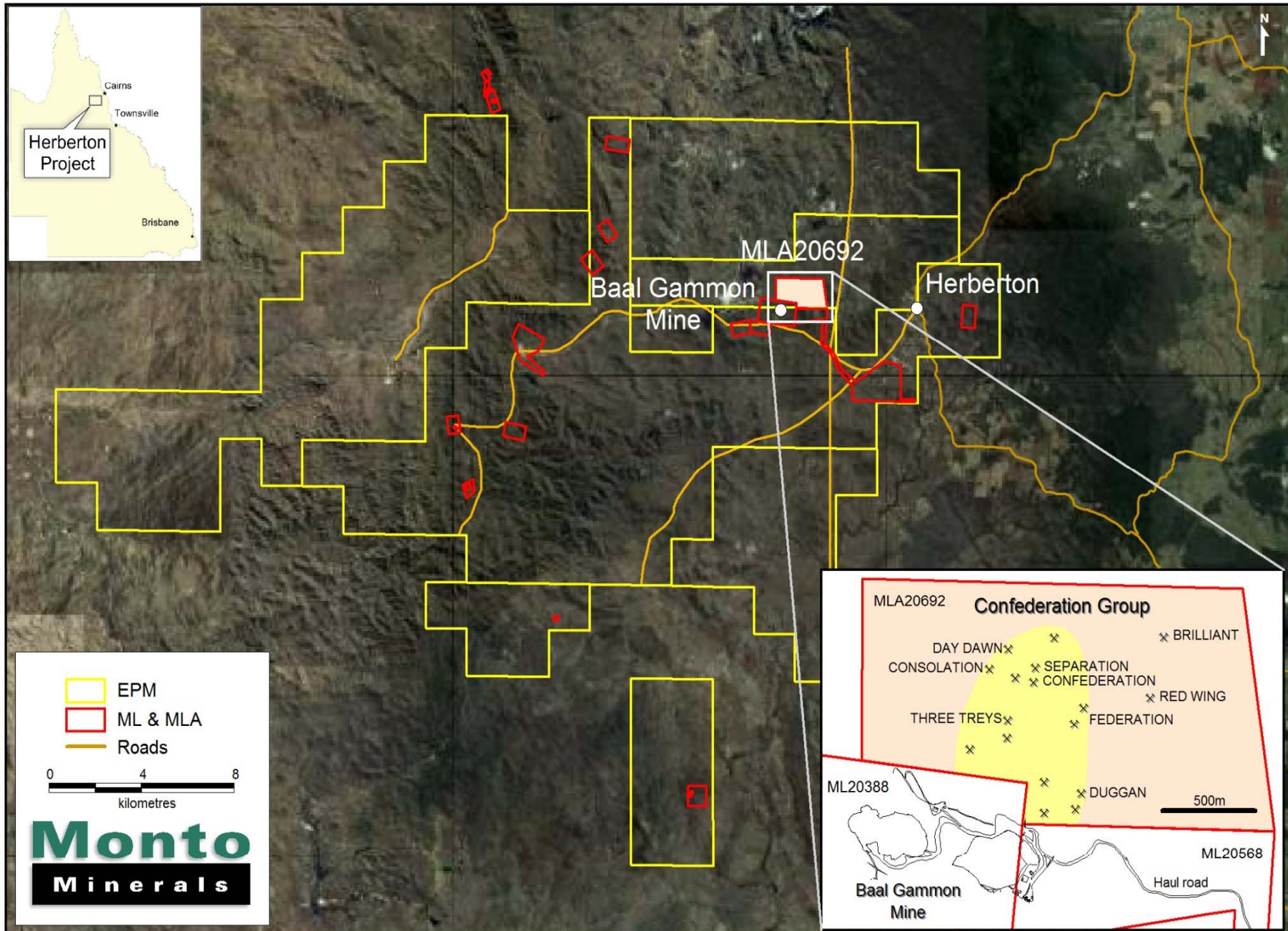
- Porphyry sill
- 1,200m strike with an average thickness of 15m
- Simple open pit, strip ratio of 3.7
- Currently accessing high grade zone
- Trucking of ore to Kagara's Mt Garnet plant

Confederation MLA

- Confederation Mining Lease Application lodged – contiguous with Baal Gammon
- 220ha MLA incorporates a number of former mines and advanced prospects all within 800m of the Baal Gammon Mine
- High grade shallow deposits with metallurgy similar to Baal Gammon
- 65 drill holes totalling over 8,300m including six percussion holes drilled by NQM in late 2008
- Modelling of ore bodies completed – currently refining drillhole database
- Potential to provide additional mine life for Baal Gammon

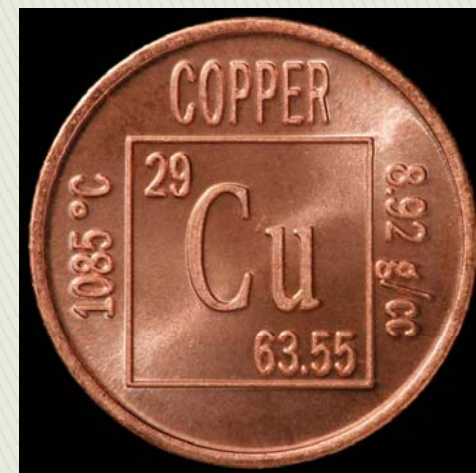
NQM Drilling at Confederation - Significant Intercepts

| Hole ID | From (m) | To (m) | Total (m) | Cu (%) | In (g/t) | Ag (g/t) | Sn (%) |
|------------|----------|--------|-----------|--------|----------|----------|--------|
| CSN02 | 93 | 94 | 1 | 2.0 | 140 | 57.5 | 0.025 |
| CSN04 | 111 | 134 | 23 | 2.24 | 160 | 74.55 | 0.073 |
| (includes) | 118 | 124 | 6 | 3.90 | 270 | 132.5 | 0.143 |
| CSN06 | 47 | 51 | 4 | 1.44 | 177 | 90.25 | 0.158 |



Baal Gammon Summary

- Operated by Kagara with an NSR payable on all metals – trucking of high grade ore commenced Nov 2011
- Kagara responsible for all costs
- Lodgement of Confederation MLA – Baal Gammon upside
- Strategic Tin Alliance between Monto and Kagara – investigation of the feasibility of a tin circuit at Mt Garnet is well advanced
- Copper and silver payable - realisation of tin credits would significantly increase NSR



Kagara Joint Venture - Targets

- JV for exploration by Kagara of base metals (excluding tin) across Monto's entire Herberton tenement holding – JV terms yet to be finalised
- Monto and Kagara are currently jointly funding an independent review of prospects within the Herberton tenement holding
- Numerous highly developed polymetallic prospects across the Herberton tenements – excellent potential for further feed for Mt Garnet
- The Copper Firing Line, Isabel, Orient and Mont Albion prospects are all highly developed. Consolation (Confederation) and Isabel have a target mineralisation range

Qualifying Statements

Competent Person Statement

The information in this presentation which relates to Exploration Results, Mineral Resources or Ore Reserves is based on information compiled by Mr James Allchurch, who is a Member of the Australian Institute of Geoscientists. Mr Allchurch has sufficient experience which is relevant to the style of mineralisation and type of deposit under consideration and to the activity which he is undertaking to qualify as a Competent Person as defined in the 2004 Edition of the "Australasian Code for reporting of Exploration Results, Mineral Resources and Ore Reserves". Mr Allchurch consents to inclusion in the report of the matters based on this information in the form and context in which it appears.

+ Copper Equivalent Calculation Explanation:

The copper equivalent calculation represents the total metal value for each metal, multiplied by the conversion factor, summed and expressed in equivalent copper percentage. These results are exploration results only and no allowance is made for recovery losses that may occur should mining eventually result nor metallurgical flowsheet considerations. The copper equivalent calculation is intended as an indicative value only. Copper equivalent conversion factors and long-term price assumptions used follow:

Copper Equivalent Formula = $\text{Cu \%} + \text{Sn(ppm)} \times 0.00026 + \text{Ag(ppm)} \times 0.012458$

Price Assumptions - Cu (US\$7,965/t), Sn (US\$21,090/t), Ag (US\$29.77/oz)

For more information, please contact:

James Allchurch – Office +61 (08) 9420 9300
Mobile +61 (0) 419 903 011
jallchurch@montominerals.com
www.montominerals.com