

**Date:** 15 June 2012

**To:** Australian Securities Exchange  
Companies Announcement Office  
Electronic Lodgment System

**Presentation to RBS Morgans Coal Conference – Re-released**

COALBANK Limited (ASX Code CBQ) released a Presentation to RBS Morgans Coal Conference to ASX Limited on 13 June 2012, but inadvertently omitted to include a Competent Person's Statement with the Presentation.

Please find attached the same Presentation with the only change being the inclusion of a Competent Person's Statement on page 17.

Yours sincerely

**COALBANK Limited**



Leni Stanley  
Company Secretary

# COALBANK

APPROACHING MAIDEN JORC RESOURCE



COALBANK

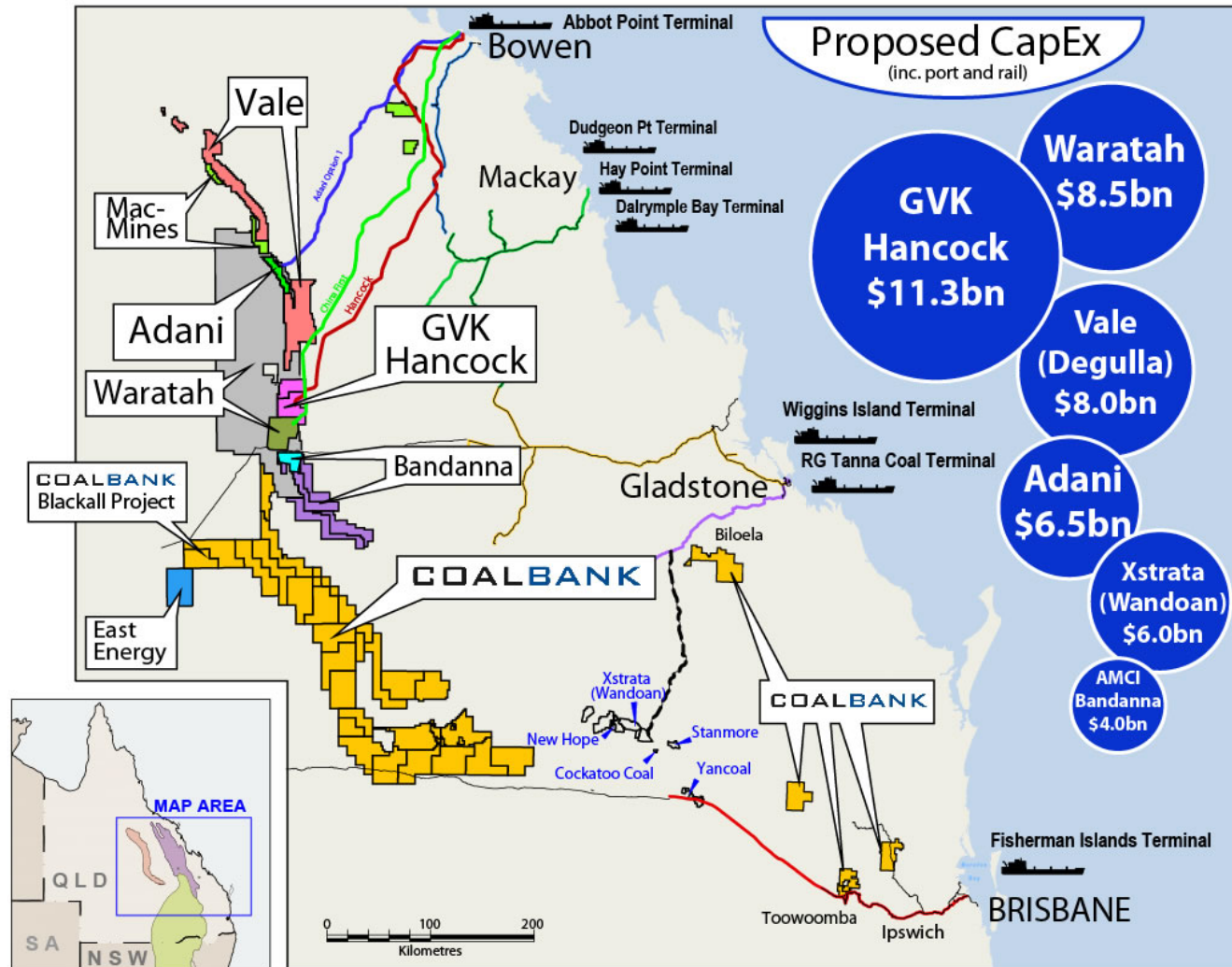
(ASX:CBQ)

RBS Morgans Coal Conference 13 June 2012

## General Disclaimer

- This document has been prepared by COALBANK Limited (the Company) to provide existing and prospective investors in COALBANK Limited with an update on the Company and its operations.
- This presentation, including the information contained in this disclaimer, does not constitute an offer, invitation or recommendation to subscribe for or purchase any security and neither the presentation, disclaimer nor anything contained in them forms the basis of any contract or commitment. This presentation does not take into account your individual investment objectives, financial situation or particular needs. You must not act on the basis of any matter contained in this presentation, but must make your own assessment of the Company.
- No representation, express or implied, is made as to the fairness, accuracy, completeness or correctness of information contained in this presentation, including the accuracy, likelihood of achievement or reasonableness of any forecast, prospects, returns or statements in relation to future matters contained in the presentation (“forward-looking statements”). Such forward-looking statements are by their nature subject to significant uncertainties and contingencies and are based on a number of estimates and assumptions that are subject to change (and in many cases are outside the control of COALBANK Limited and its directors) which may cause the actual results or performance of COALBANK Limited to be materially different from any future results or performance expressed or implied by such forward-looking statements.
- To the maximum extent permitted by law, none of COALBANK Limited, or their related corporations, directors, employees or agents, nor any other person, accepts any liability, including, without limitation, any liability arising from fault or negligence, for any loss arising from the use of this presentation or its contents or otherwise arising in connection with it.

## Queensland: Emerging Projects and Infrastructure



Source: ABARE and company public presentations/media.

## Executive Summary

COALBANK LIMITED (“COALBANK” or “the Company”) is an ASX-listed company (ASX: CBQ) with an extensive portfolio of early stage coal projects in Queensland. The Company holds the largest coal exploration permit footprint in Australia of any ASX-listed company.

### SCALE

Tenements exceeding **24,000sqkm** in the **Surat, Galilee, Eromanga and Bowen Basins**

### SELECTIVE

Coal tenements selected on the basis of historical waterbore drilling logs that displayed **coal intersections**

### EARLY SUCCESS

Repeated, significant, shallow coal intersections over **26km of strike** in drilling in Blackall Project

### SUCCESSFUL TEAM

A **proven team** of explorers and developers of early stage coal projects, with world-leading coal geology consultants

### UPSIDE

Large upside potential from exploration and strategic acquisition targets

### PROVEN AND SECURE REGION

All COALBANK projects neighbour **producing or proven coal assets**  
**96%** of COALBANK’s coal exploration areas lie **outside the Strategic Cropping** Land Protection Areas

### MAIDEN JORC RESOURCE IMMINENT

Major drilling program completed at the Blackall Project during the June Quarter of 2012 aimed at delivery of a **maiden JORC coal resource by end of June 2012**. **McElroy Bryan** appointed as Independent Geological Consultant for resource modelling

## Strategic Footprint in Queensland Coal Basins

*Neighbours all the major players in Australia's recent international coal plays*



- **COALBANK: 100%-owned coal projects** in several Queensland basins covering **24,000km<sup>2</sup>**
- **Multi-deposit potential** in Surat/Eromanga portfolio
- Major projects and infrastructure planned for the region (> **AUD 40 billion including ports and rail**)
- State Government approval for **GVK-Hancock Rail Project** from Alpha Project to Abbot Point Coal Terminal (29 May 2012)
- Major developers of regional projects include:
  - **GVK** (Kevin's Corner/Alpha)
  - **Adani** (Carmichael)
  - **Vale** (Degulla)
  - **Xstrata** (Wandoan)
  - **Waratah Coal** (China First)
  - **AMCI** (South Galilee)

## Corporate Snapshot

<b>Capital Structure (AUD)</b>	
Share Price	\$0.05
Shares Outstanding	813 m
Market Capitalisation	\$41m



Exchange	<ul style="list-style-type: none"> <li>• Australian Stock Exchange: (ASX: CBQ)</li> <li>• Total Shareholders: 1,200 (approximately)</li> </ul>
Equity Holders	<ul style="list-style-type: none"> <li>• Allegro Capital Nominees Pty Ltd (G. Baynton, Director) 49.4%</li> <li>• Affiliated Funds of Och-Ziff Capital Management LLC 11.9%</li> <li>• Square Resources Pty Limited (S. Ever, Director) 3.0%</li> <li>• Other 35.7%</li> </ul>

## Key Personnel

**Bruce Patrick Chief Executive, B.Sc. (Hons), Grad Dip Mgt, Cert. in Mining, MAusIMM**

Project Manager for Anglo Coal's \$800m Lake Lindsay Project, managing the project from initial exploration, through feasibility and approvals, to construction. Open-cut mining project management roles in Anglo Coal's Operations and Projects and Engineering Group. Early career as a geologist for Coal and Allied Industries and Thiess Mining Division where he assisted in further defining the stratigraphy of the Surat Basin. At Callide Mine in Central Queensland he moved to mining engineering and mine operational management roles.

**Lance Grimstone Director, B.Sc. (Hons) Geol. Grad.Dipl. Mangt., F.AusIMM, CPGeo.M.MICA.**

An expert geologist with over 40 years' experience in the exploration, mining and civil engineering industries. For the last 25 years, has consulted to eastern Australian coal operations. He was a key geological consultant to Macarthur Coal Limited prior and post its IPO.

**Staffan Ever Director, MBA, M.Sc. (Civil Eng)**

Former CEO of QCoal, former General Manager of AMCI Australia (12 years with AMCI). Strong experience in managing and financing coal projects from greenfields to production and marketing. Previously undertook and oversaw equity investments in Gunnedah, Glennies Creek, Coppabella and Moorvale mines.

**Dr Peter Jorgensen Senior Geologist, BSc (Hons), PhD, MAusIMM**

Over 18 years experience in the Queensland coal industry, more than 20 years general geological experience. Previous roles in exploration, mine site geology and resource evaluation with Anglo Coal, Shell Coal and as a self-employed contract geologist.

**Marcus Trost Project Geologist, BSc**

Experienced project exploration geologist. Previous roles include project exploration geologist with Macarthur Coal, Senior Site Geologist/Site Manager REY Resources and Senior Project Geologist with McElroy Bryan Geological Services Pty Ltd.

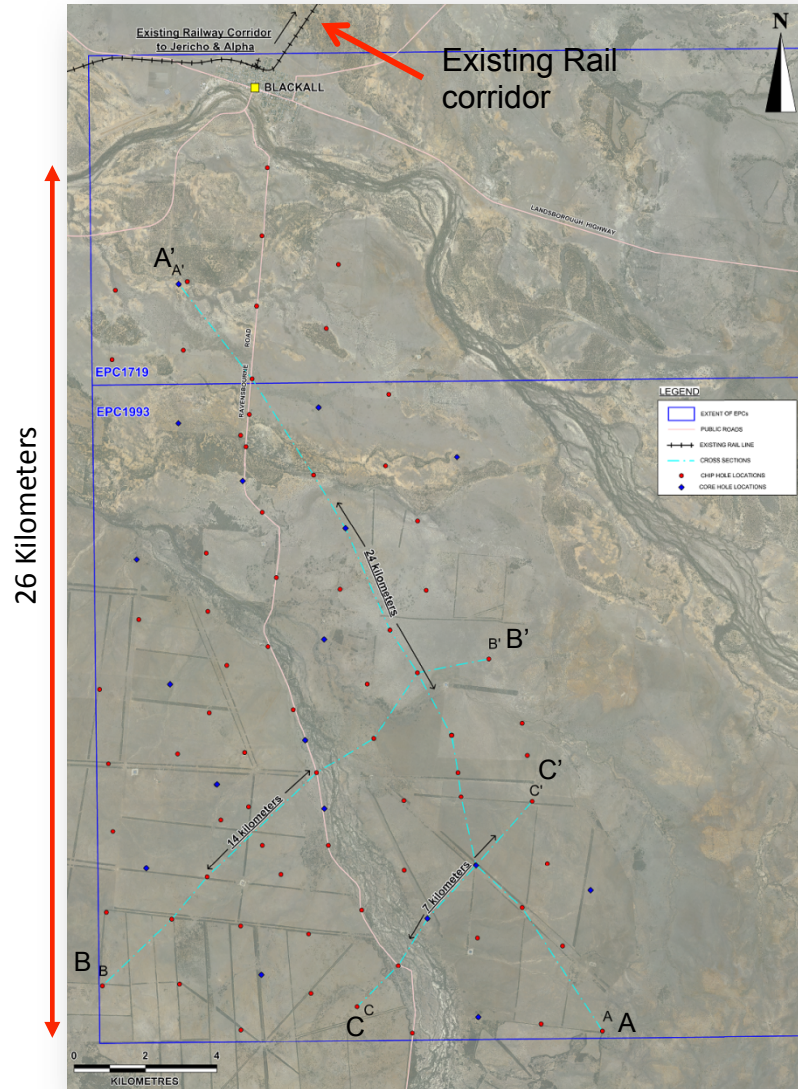
**Greg Baynton Deputy Chairman (Executive), M.Econ St., MBA, B.Bus (Accounting), Grad.Dip. Finance and Investment, FFINSIA.**

Founder of Tambo Coal & Gas, Moreton Energy and Coalbank. Expertise in new project generation, capital raisings, corporate structuring, tenure application and administration, government relations and Joint Ventures. Founder and Director of Orbit Capital, former Director of PIPE Networks Limited, current Director of NEXTDC Limited.

### Board of Directors

Roger Clarke	Chairman
Greg Baynton	Deputy Chairman (Executive)
Lance Grimstone	Director
Staffan Ever	Director
William Stubbs	Director
Grahame Baker	Director

## Blackall Project – Borehole and Section Location Plan



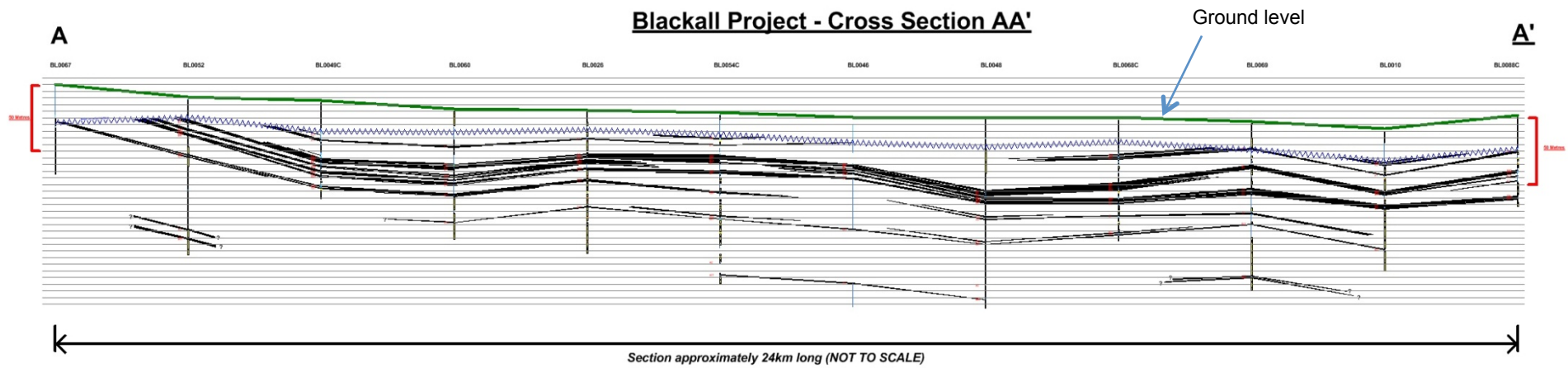
### Resource Evaluation Drilling Phase

- Completed on time and on budget
- 76 holes drilled (of which 17 were partially cored for Coal Quality analysis)
- 7378 metres drilled in total (878 metres cored)
- Drilling data under analysis for coal resource evaluation in accordance with JORC criteria

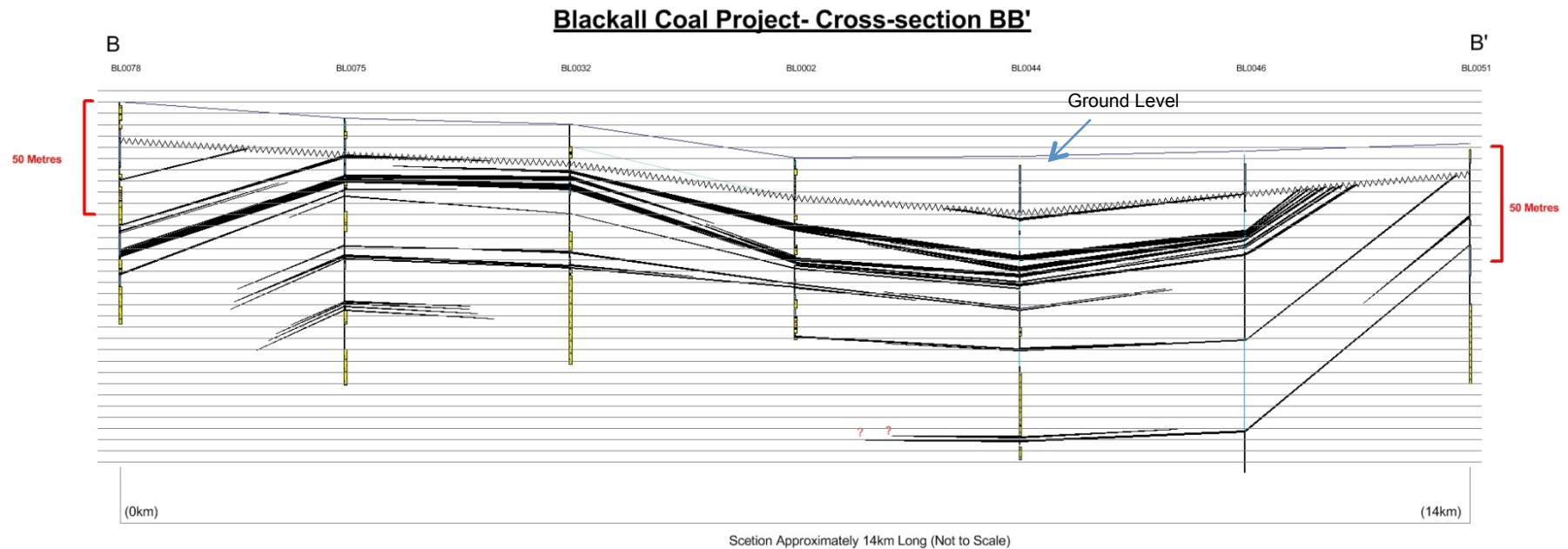
### Blackall Project Next Steps

Task	May	June
Laboratory Analysis of Coal Samples	[Blue bar spanning May and June]	
Geological Modelling	[Dark blue bar spanning May and June]	
Coal Resource Evaluation		[Green bar in June]

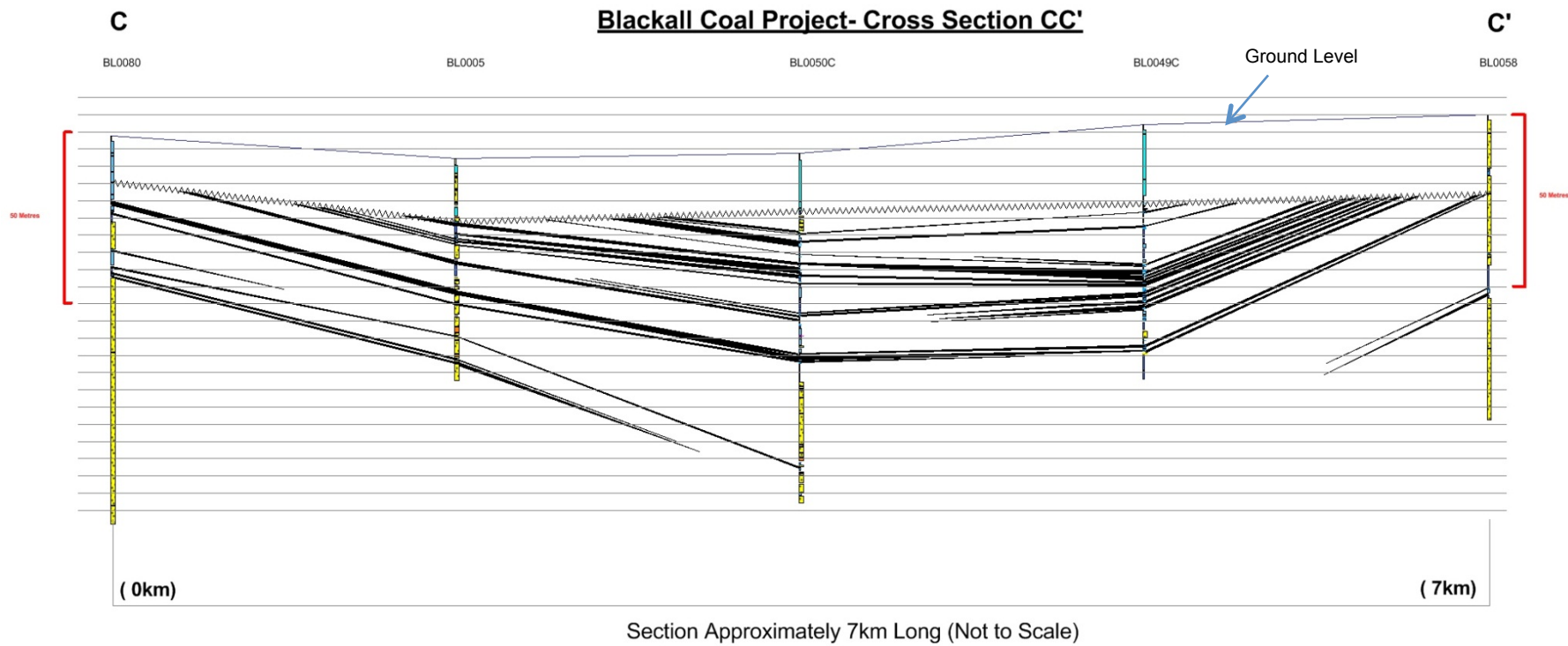
## Sample: Cross section AA' (NNW – SSE)



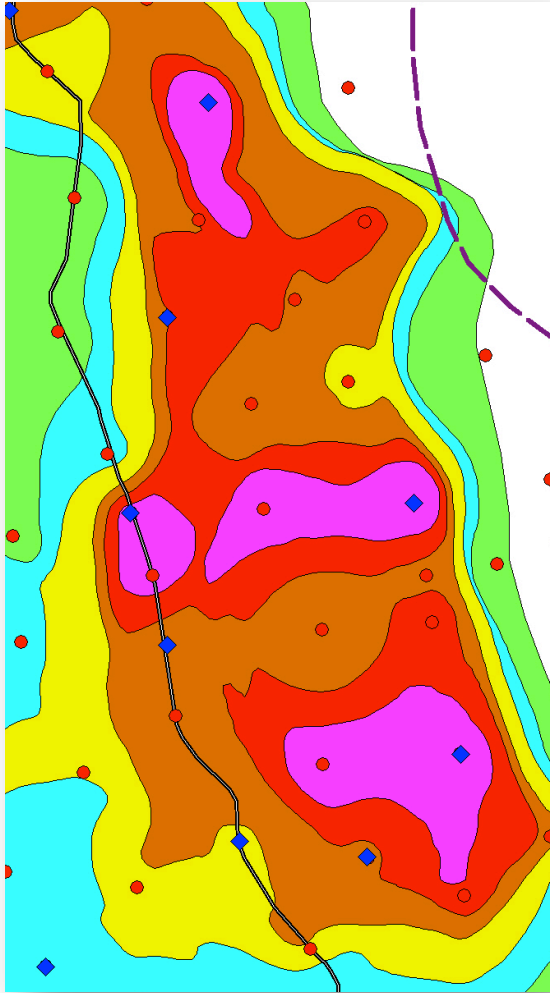
## Sample: Cross Section BB' (West - East Seams)



## Sample Cross Section CC' ( West-East Seams)



## Blackall Coal Deposit – Early Indications



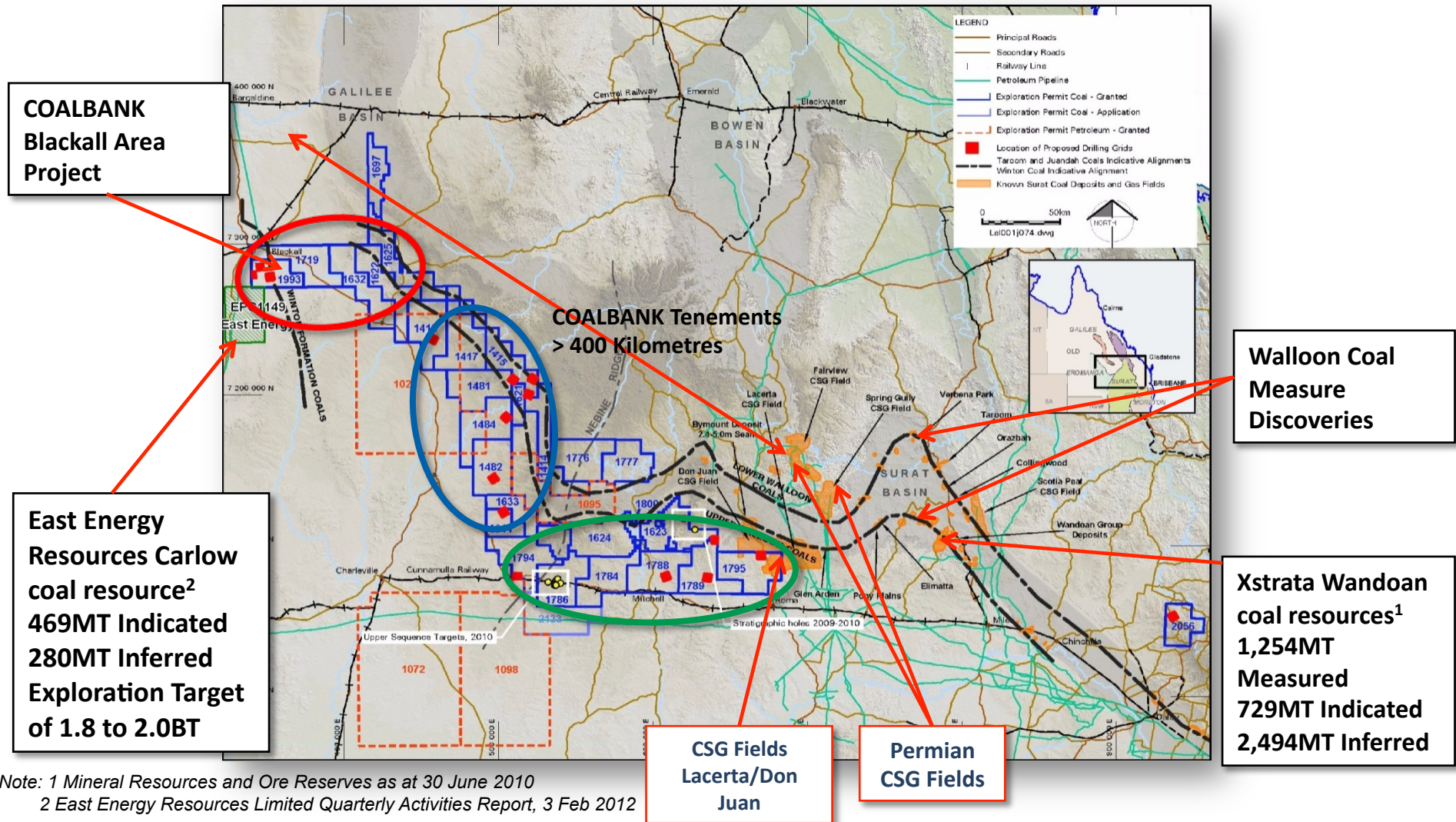
### Indicative Structural Characteristics

- A major coal depo-centre
- Net coal thicknesses of up to 12m
- Shallow, flat-lying deposit
- Low indicative overburden/interburden-to-coal ratios

### Indicative Raw Coal Quality Characteristics

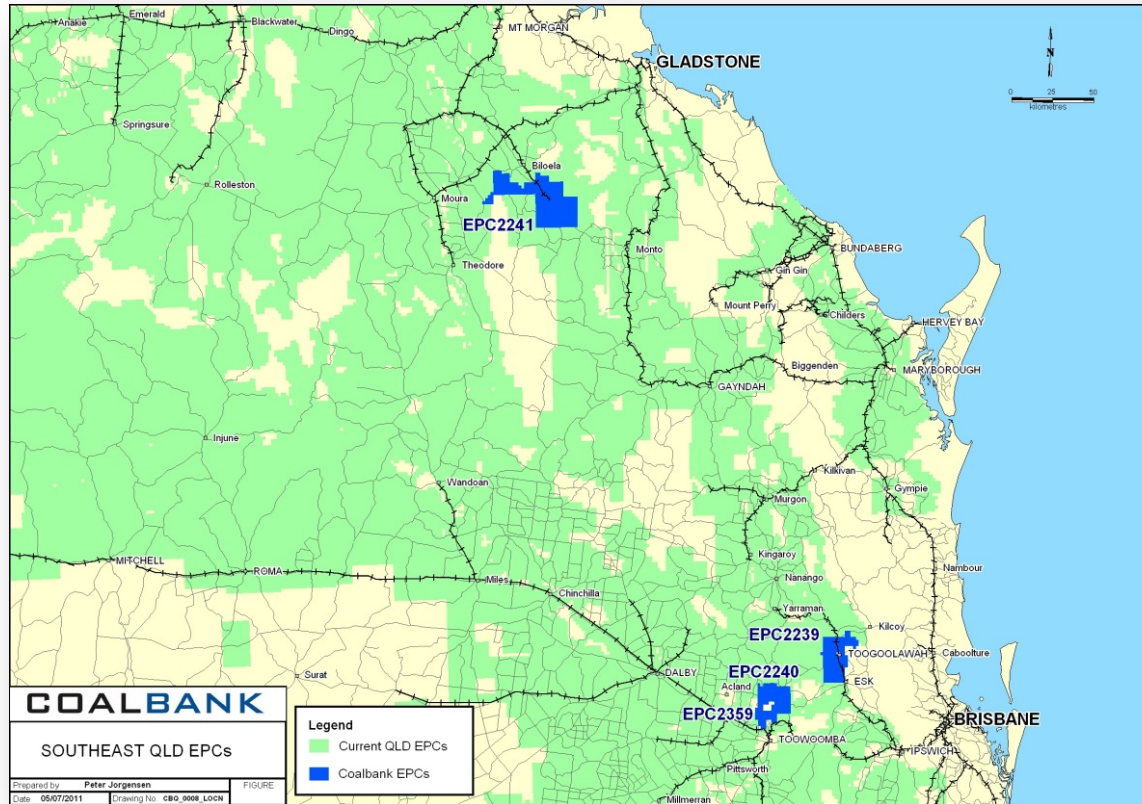
- Sub-bituminous thermal coal
- Low-medium ash, low sulphur

## Blackall-Roma Project Areas & New Targets



## East Surat and Bowen Basin Projects

*Three Eastern Queensland projects all close to major coal deposits, rail infrastructure and ports*



### EPC 2241 - Biloela South

- 20km south of Callide Mine
- 40km west of proposed Monto Mine

### EPCA 2239 - Coal Creek

- 45km south east of Meandu Mine
- 55km north of Jeebropilly Mine

### EPC 2240 & EPCA 2359 - Coalbank South

- 15km east of New Acland Mine

- **All have coal intersections at shallow depths** reported in the waterbore logs eg. 24.4 metres of coal in EPCA2239
- **Geographical diversity** should mitigate the impact of adverse weather within the combined portfolio

## Coal Exploration and Development Indicative Plans

Task	2011		2012				2013	2014	2015
	Q3	Q4	Q1	Q2	Q3	Q4			
First-pass drilling on selected targets	█	█							
Drill follow-up targets to JORC Resource level		█		█	█				
First-pass drilling on next targets					█	█			
Drill next-round targets to JORC Resource level							█		
MINE 1									
Concept Study						█	█		
Pre-feasibility Study							█		
Feasibility Study								█	
Mine Development									█
MINE 2									
Concept Study								█	
Pre-feasibility Study									█
Feasibility Study									

## Summary

### 2012 drilling program to achieve maiden JORC-standard resource at Blackall

- Drilling Phase completed on time and within budget

### Exciting initial indications

- Extensive, shallow, flat-lying depo-centre
- Low indicative overburden/interburden-to-coal ratios

### Maiden JORC-standard coal resource statement

- On target for release mid-2012, as previously advised



## Competent Person's Statement

- The Competent Persons Statement below relates to this Presentation made by COALBANK Limited.
- *'The information in this report that relates to drilling results derived from COALBANK's 2011 and 2012 drilling campaigns at its Blackall Coal Project, and to previous waterbore and petroleum well drilling results derived from data provided by the Queensland Government Department of Natural Resources and Water and open file reports obtained via the Queensland Department of Mines and Energy, with such information and results compiled by Dr Peter Jorgensen BSc(Hons), PhD, MAusIMM. Dr Peter Jorgensen is employed by Jorgensen Geological Services Pty Ltd (ABN 32 080 949 775). Dr Peter Jorgensen has sufficient coal geology experience to qualify as a Competent Person as defined by the 2004 Edition of the Australasian Code for Reporting of Exploration Results, Mineral Resources and Ore Reserves. Dr Peter Jorgensen consents to the inclusion in the presentation of the matters based on his information in the form and context in which it appears.'*

## Contact Details

### **Greg Baynton**

Deputy Chairman

COALBANK LIMITED

e: [gregbaynton@coalbank.com](mailto:gregbaynton@coalbank.com)

t: +61 7 3229 6606

m: +61 414 970 566

### **Bruce Patrick**

Chief Executive

COALBANK LIMITED

e: [brucepatrick@coalbank.com](mailto:brucepatrick@coalbank.com)

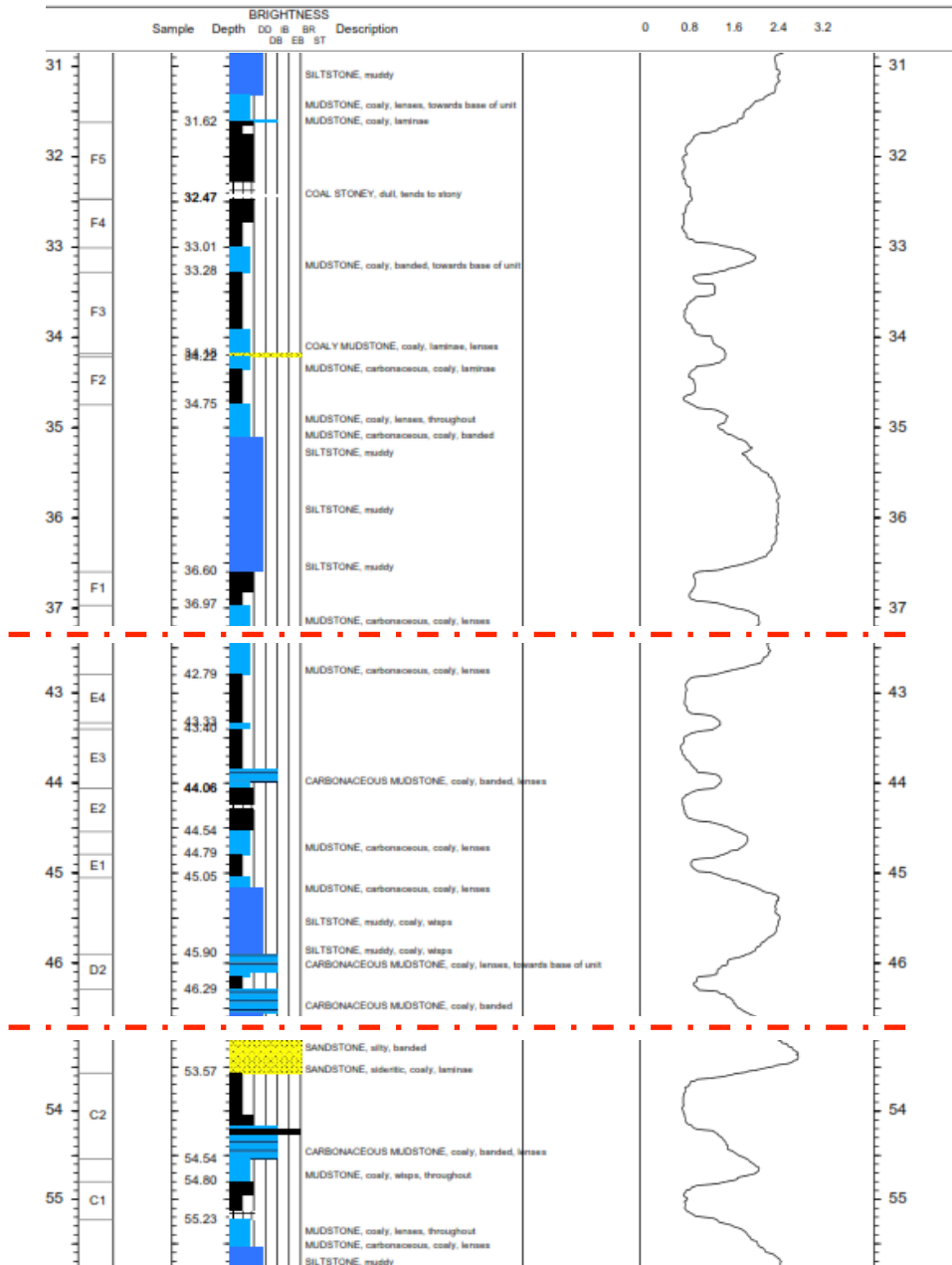
t: +61 7 3229 6606

m: +61 417 389830

Website: [www.coalbank.com](http://www.coalbank.com)

ASX Code: **CBQ.AX**





## RAW COAL QUALITY – BL0015C

### Raw Coal Calculated Ply Composites (air dried basis)

PLY	FROM (m)	TO (m)	THICK (m)	I.M. (%) ad	ASH (%) ad	S.E. (ad) (MJ/kg)	RD ad
F5	31.62	32.47	0.85	20.5	12.1	19.76	1.41
F4	32.47	33.01	0.54	21.4	6.4	21.10	1.37
F3	33.28	34.18	0.90	18.6	22.5	16.98	1.48
F2	34.22	35.11	0.53	18.8	19.4	17.94	1.45

PLY	FROM (m)	TO (m)	THICK (m)	I.M. (%) ad	ASH (%) ad	S.E. (ad) (MJ/kg)	RD ad
F1	36.60	36.97	0.37	20.4	12.6	19.63	1.41

PLY	FROM (m)	TO (m)	THICK (m)	I.M. (%) ad	ASH (%) Ad	S.E. (ad) (MJ/kg)	RD Ad
E4	42.79	43.33	0.54	20.9	10.0	20.56	1.38
E3	43.40	44.06	0.66	18.1	22.5	17.27	1.48
E2	44.06	44.54	0.48	20.7	14.6	19.00	1.41
E1	44.79	45.05	0.26	19.5	15.8	18.94	1.43
D2	45.90	46.29	0.39	17.3	31.9	14.79	1.53

PLY	FROM (m)	TO (m)	THICK (m)	I.M. (%) ad	ASH (%) ad	S.E. (ad) (MJ/kg)	RD ad
C2	53.57	54.54	0.97	18.5	25.0	16.12	1.51
C1	54.80	55.23	0.43	22.0	8.0	20.34	1.36